

# Packaging & logistics for the pharmaceutical industry



Jars, drums, pails, and  
wide neck drums



Transport and  
distribution bins



Cold chain  
packaging

## HISTORY & LOCATIONS

**1955 The establishment of our company Engels Logistiek BV, NL.**



*Engels Logistiek BV - Engels Group NV*

**1990 We move to Son, close to Eindhoven. New building.**



*Engels Logistics NV*

**1997 Start of Engels Logistics NV (BE).**

**2000 We move to Eindhoven and triple our warehouse space to 7.500 m<sup>2</sup>.**



*Engels Manutention et Environnement SARL*

**2005 Engels Manutention & Environnement SARL (FR) is established.**

**2006 Start of Engels Logística e Ambiente, Unip (PT).**



*Engels Logística e Ambiente, Lda*

**2008 HLC Milieuservice becomes part of the Engels Group.**

**2008 Start of Engels Behältertechnik GmbH (DE), specifically for the production of underground containers.**



*Engels Behältertechnik GmbH*

**2011 Acquisition of Norah Plastics NV, merged with Engels Logistics NV.**

**2012 Engels Logistics NV moves to its new premises in Beringen.**

**2013 Establishment of Engels Group NV, to support and manage the Engels companies.**

**2020 Our head office moves to a new energy-neutral business facility with 7.000 m<sup>2</sup> of warehouse space and a production department of 2.000 m<sup>2</sup>.**



*Engels Protechnic Ltd.*

**2022 Protechnic becomes Ltd (UK), part of the Engels group NV.**

**2024 Group turnover passes €60.000.000 with more than 160 employees in 6 countries.**

Engels has been a reliable partner for the pharmaceutical industry for many years. Our plastic packaging and logistics solutions support both production processes (GMP) and the storage and distribution (GDP) of pharmaceutical goods. From hygienic pallets and distribution bins to UN approved drums and custom trays for cleanrooms, we supply solutions that meet the strictest requirements in terms of safety, hygiene, traceability, and automation.

Thanks to our expertise in plastic storage and transport solutions and our extensive product range, we are able to respond quickly to the specific needs of pharmaceutical manufacturers, using standard products or customer-specific custom solutions.

Whatever your challenge may be, Engels works with you and delivers what is required. In this brochure you will find an overview of products that fit perfectly within a pharmaceutical working environment.

<b>Engels Group</b>	<b>Page</b>
<b>Product carriers</b>	<b>2 - 3</b>
<b>Modular workpiece carrier</b>	<b>4 - 5</b>
<b>Printing and marking</b>	<b>6</b>
<b>UN approved jars</b>	<b>7</b>
<b>UN approved drums</b>	<b>8</b>
<b>Wide neck drums</b>	<b>9</b>
<b>Pails</b>	<b>10 - 11</b>
<b>Hygiene bins</b>	<b>12</b>
<b>Transport and storage bins</b>	<b>13</b>
<b>Distribution bins</b>	<b>14 - 17</b>
<b>Nesting and stacking containers</b>	<b>18 - 19</b>
<b>Collapsible pallet boxes</b>	<b>20</b>
<b>Export pallets</b>	<b>21 - 23</b>
<b>Hygiene pallets</b>	<b>24 - 25</b>
<b>Spill trays</b>	<b>26 - 27</b>
<b>Wheelie bin 2 - and 4 - wheel</b>	<b>28</b>
<b>Reference case</b>	<b>29</b>
	<b>30 - 31</b>



Vacuum forming is a production method used to create a new product from a flat plastic sheet. This product can be a product carrier, tray, container, or lid.

Because the forces that vacuum forming moulds need to withstand are only a fraction of those required for injection moulding, tooling costs are approximately 80% lower. For this reason, vacuum forming is usually cost-effective for series starting from 250 units. For the production of tough and impact resistant products, we use polyethylene. When dimensional stability and precision are important, we generally choose ABS. Some examples:

### Advantages of vacuum forming with plastic:

- Suitable for small, medium or large series.
- Many possibilities in terms of design and colour.
- Short lead time from drawing to design.
- Low tooling costs compared to injection moulding.
- In house production of moulds.
- Large formats possible.
- High degree of design freedom.
- Wide choice of materials.
- Suitable for forming transparent products.

### Limitations:

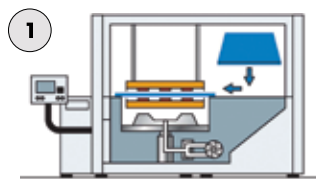
- Variations in wall thickness.
- Post-processing is always required.
- Vacuum forming is nothing more than shaping a plastic sheet. As a result, no snap fits or reinforcing ribs can be added as with injection moulding.



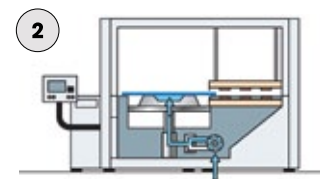
*Vacuum forming offers many possibilities in design.*

Often, a container with a vacuum formed interior is used as a product carrier. The container provides stackability, while the interior positions and protects the parts to be transported. This is relatively expensive, as two separate production processes are required for one packaging solution. For this reason, we have invested in vacuum forming moulds with interchangeable inserts that combine both functions in a single solution: stackable product carriers.

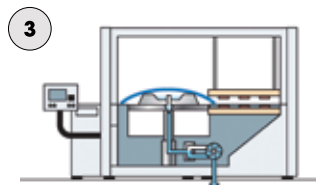
### Schematic representation of the vacuum forming production process.



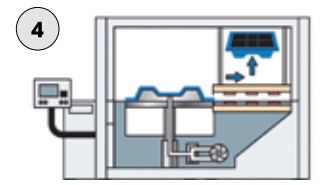
*The sheet is clamped in the machine and heated.*



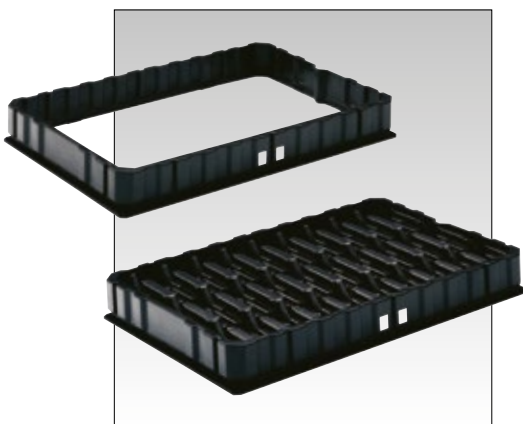
*Once the sheet has been sufficiently heated, the heaters are retracted. The base plate and the tool are raised. The pump creates overpressure.*



*The heated sheet is pre-stretched and the forming tool is driven towards the sheet. The air is extracted from the machine (vacuum).*

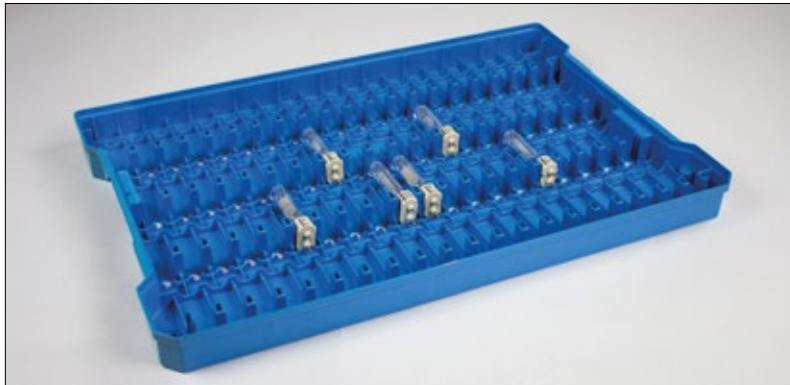


*The external atmospheric pressure pushes the softened sheet against the mould wall, accurately reproducing the contours.*



Above you see a modern solution: container and product carrier formed in a single process. The outer frame is shown separately for illustration purposes. Frames are available in variable heights, precisely matched to the contents.

When precision, design, or load bearing capacity place higher demands on a product than vacuum forming can usually provide, injection moulding is the solution, but often an expensive one. With Engels, the mould already exists, so investment is only required in the modification.



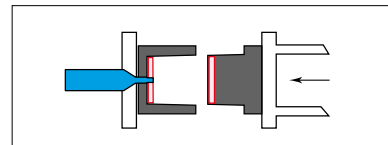
Standard product carrier. The outer shape is fixed, as is its ability to stack with other product carriers. Only the interior is customer specific.

We have invested in standard moulds for commonly used products with approximately the same outer dimensions, such as product carriers and trays.

The outer mould, core, and hot runner injection valves are designed in such a way that investment is only required in the shaping components.



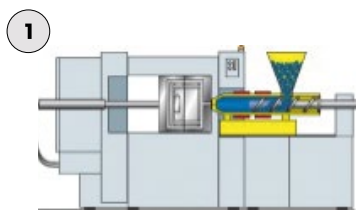
Plastic container manufactured from heat-stabilised PP. Used for the sterilisation of products.



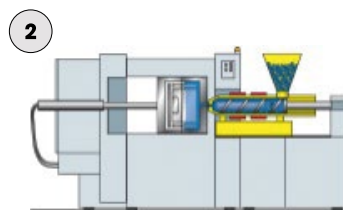
For a new product, only the red components need to be designed.

Trays are often used to enable smooth handling of boxes and crates of moderate quality in automated warehouses. They are almost always supplied on a project specific basis. Below is an example:

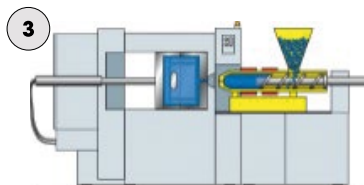
**Schematic representation of the injection moulding production process.**



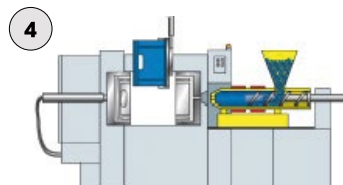
**1**  
A screw forces the plastic (granulate) through a small nozzle into the screw channel.



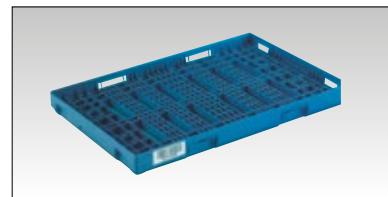
**2**  
The granulate is heated and injected into the product mould.



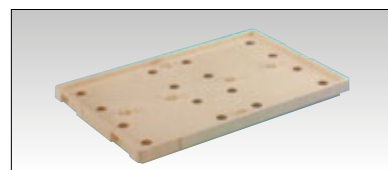
**3**  
The product cools down.



**4**  
Once the material has cooled sufficiently, the tool is opened. The product is then removed by the robotic arm.



Tray, 600 x 400 mm internal dimensions, with positioning lugs around the perimeter and an extra reinforced base.

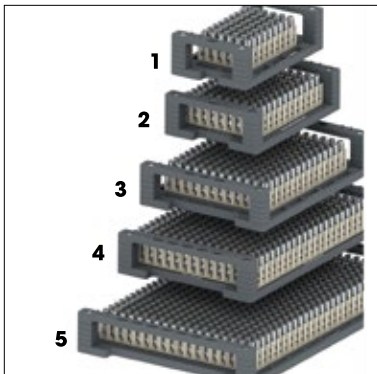


Tray with sandwich base for additional stiffness. Spring-loaded pins prevent containers or boxes from shifting.

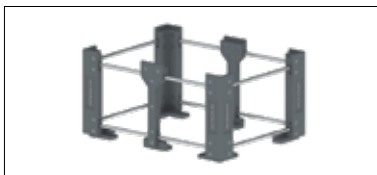
## PRODUCT CARRIERS

### MODULAR WORKPIECE CARRIER

**A reusable transport packaging solution suitable for controlled environments such as the pharmaceutical sector.**



**The workpiece carriers from Zell® are available in a number of standard sizes: 255 x 155 mm, 275 x 190 mm, 355 x 255 mm, 425 x 275 mm, 555 x 355 mm. Custom solutions are of course also possible, allowing us to provide a suitable solution for every challenge.**



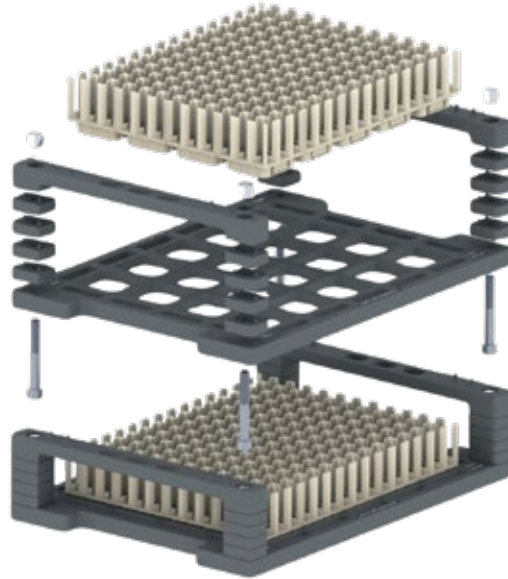
**The baskets are available in a number of standard sizes: 300 x 200 mm, 320 x 235 mm, 400 x 300 mm, 470 x 320 mm, 600 x 400 mm, 800 x 600 mm**



**Multiclip is a fastening component that securely holds multiple workpieces on a workpiece carrier at the same time. Thanks to the practical snap in locking mechanism, the Multiclip can be easily clipped into place without the need for screws.**

In the Netherlands, Belgium, and Luxembourg, we are the official sales partner of Zell®. We supply modular workpiece carriers, transport baskets, and other technical solutions that make the transport and cleaning of components within precision engineering simpler and safer.

Workpiece carriers provide a fixed structure that allows components to be accurately positioned, processed, and transported to the next production step. With a workpiece carrier, handling bulk goods (a time-consuming and error-prone process) becomes a thing of the past.



Our workpiece carriers are made from high quality polyamide and are designed for maximum stability and precision. They are configured to ensure effective and thorough cleaning through a high flow volume. In sectors where intensive washing processes are applied, our products have proven to be a reliable solution. The selected material of the workpiece carriers shows good resistance to the chemicals used in washing processes, ensuring that quality is maintained.

All additional components, such as handles and Multiclips, are optimally matched and can also be manufactured from antistatic plastic.

We offer a wide range of solutions for the transport, automation, and cleaning of components.



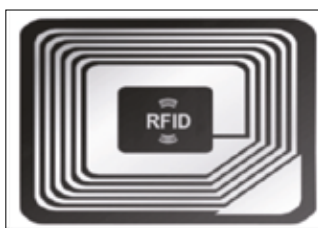
With mould-integrated labelling, a label is placed in the mould before the injection moulding process starts. This allows you to save time and costs, as no additional printing is required afterwards. During the injection moulding process, the label bonds with the injected molten plastic, becoming an integral part of the product. Such a label can be decorative, for example on a beer crate, but also functional, such as a barcode or an RFID label, allowing the exact contents to be read instantly with a simple scan. Another functional example is a unique code in or on the container, enabling traceability.

Applications of this technique can be used in processes such as injection moulding, but also in blow moulding.



*A non-removable barcode on a container by means of in-mould labelling.*

Digital printing is a technology that was introduced in the 1990s. When a file is digitally printed, it is produced without the use of printing plates. The file can be sent directly to the printer.



In-mould labelling offers the possibility to integrate an RFID tag into a product. RFID is a technology for contactless identification of products. RFID is a replacement for barcodes and provides higher reliability.

### Advantages of in mould labelling: Suitable for large series.

- **Cost saving, as product manufacturing and labelling take place simultaneously.**
- **The technique offers various possibilities such as embossed details, matt and glossy surfaces.**
- **Wear resistant, scratch resistant and non-removable marking.**
- **Resistant to large temperature differences and humidity.**
- **Fully recyclable product.**
- **Excellent print quality in a wide range of colours.**

### Advantages of digital printing: Suitable for small to medium sized series.

- **Time saving, as the print job can be produced within a few minutes.**
- **Because the image is transmitted digitally, it is possible to print variable data such as a unique code.**
- **More environmentally friendly than offset printing.**



Plastic jars with screw lids protect your valuable products against moisture, contamination, and unauthorised interference, ensuring that hazardous solid substances arrive safely at their destination. They feature a wide opening and smooth inner walls, allowing the contents to be removed easily and completely. The plastic jars are water and vapour tight, tamper-evident sealable, and UN approved for hazardous solid substances. As a result, they are widely used in the food, chemical, and pharmaceutical sectors.



**The jars are equipped with a tamper-evident feature and comply with the UN marking for solid substances. The packaging unit is a box of ten units.**



art. n°	dimensions	opening dimensions	capacity	max. gross total weight
<b>4303-03-DS</b>	ø99 x 55,4 mm	ø96,8 mm	300 ml	0,4 kg
<b>4305-03-DS*</b>	ø99 x 82,4 mm	ø96,8 mm	500 ml	0,7 kg
<b>4306-03-DS</b>	ø99 x 104,4 mm	ø96,8 mm	650 ml	0,9 kg
<b>4310-03-DS*</b>	ø99 x 157,4 mm	ø96,8 mm	1000 ml	1,3 kg
<b>4313-03-DS</b>	ø99 x 197,4 mm	ø96,8 mm	1300 ml	1,4 kg
<b>4315-03-DS</b>	ø119 x 161 mm	ø116 mm	1500 ml	2,0 kg
<b>4320-03-DS</b>	ø119 x 236 mm	ø116 mm	2000 ml	2,6 kg
<b>4325-03-DS</b>	ø119 x 266 mm	ø116 mm	2500 ml	3,3 kg

\*also available from stock with bright red lid

The jars in this range are also UN approved for the packaging of solid substances. They are mainly used in the food, chemical, and pharmaceutical sectors. To prevent unauthorised access to the product, an impact pin seal is fitted. This makes the small drums tamper evident.

The packaging consists of a white jar with a dark red screw lid and a transparent inner lid. The quarter turn screw lid reduces handling time and is available in two versions and eight colours. The screw lid features an integrated tear off band that makes any unauthorised handling of the contents immediately visible.

The jars are supplied in sets of ten pieces, complete with a red brown lid and a transparent inner lid.

Our compact drums with screw lids are designed for the safe packaging of solid substances such as powders, granulates, and laboratory samples. Thanks to the robust wall structure and reliable closure, they are suitable for industrial applications where leak-tightness and tamper protection are essential.

The drums are UN approved for hazardous solid substances and are supplied as standard with a tamper-evident seal. This makes them particularly suitable for use in the pharmaceutical sector, chemical industry, and food sector.

With capacities ranging from approximately 250 ml to several litres, the drums are easy to handle, nestable when empty, and available from stock.



**Impact pin seal.**



**Features:**

- **Nestable**
- **UN X marking for the transport of solid substances**
- **Screw lid**
- **Water/vapour tight closure**
- **Opening and closing with just a quarter turn**
- **Tamper-evident feature (impact pin seal)**
- **Smooth inner wall**

art. n°	dimensions	opening dimensions	capacity	max. gross total weight
<b>EM-4515-0</b>	ø333 x 297 mm	ø295 mm	15 ltr.	30 kg
<b>EM-4520-0</b>	ø333 x 377 mm	ø295 mm	20 ltr.	30 kg
<b>EM-4525-0</b>	ø333 x 457 mm	ø295 mm	25 ltr.	30 kg
<b>EM-4502-5 lid blue</b>	ø333 x 15 mm	-	15 - 25 ltr.	-

**please note: drums are supplied without lids, lids must be ordered separately.**

# WIDE NECK DRUMS

STANDARD &  
EXTRA LARGE

Our plastic wide-neck drums are ideal for the safe packaging of hazardous solid substances. They are manufactured from polyethylene (HDPE), free from cadmium and other heavy metals, and offer excellent chemical resistance.

Thanks to the wide opening, the drum is easy to fill and completely empty. The screw lid closes securely, is easy to open, and can be tamper-evident sealed for additional safety during transport.

The wide-neck drums protect the contents against moisture, contamination, and manipulation, and are UN approved for hazardous solid substances. They are stable when stacked and perfectly palletisable, allowing efficient and safe storage and transport.



**Wide neck drums and cylinders used as ingredient containers.**



art. n°	dimensions	capacity	opening	max. weight
7003	ø198 x 171 mm	3,6 ltr.	ø136 mm	12 kg
7006	ø198 x 263 mm	6 ltr.	ø136 mm	20 kg
7010	ø274 x 238 mm	10 ltr.	ø204 mm	22 kg
7015	ø274 x 327 mm	15 ltr.	ø203 mm	22 kg
7020	ø274 x 417 mm	20 ltr.	ø203 mm	27 kg
7026	ø316 x 415 mm	26 ltr.	ø203 mm	33 kg
7042H*	ø410 x 415 mm	42 ltr.	ø282 mm	51 kg
7055H*	ø410 x 518 mm	54 ltr.	ø282 mm	66 kg
7068H*	ø410 x 632 mm	68 ltr.	ø282 mm	81 kg

\* the drums are equipped with two handles



art. n°	dimensions	capacity	opening	max. weight
6942H*	ø410x502 mm	55 ltr.	ø410 mm	69 kg
6943H*	ø410x579 mm	64 ltr.	ø410 mm	81 kg
6944H*	ø410x685 mm	75 ltr.	ø410 mm	81 kg
6945	ø338x250 mm	17 ltr.	ø295 mm	25 kg
6947	ø338x359 mm	26 ltr.	ø295 mm	38 kg
6947H*	ø338x359 mm	26 ltr.	ø295 mm	38 kg
6950	ø338x450 mm	34 ltr.	ø295 mm	48 kg
6950H*	ø338x450 mm	34 ltr.	ø295 mm	48 kg
6948	ø338x485 mm	39 ltr.	ø295 mm	48 kg

\* the drums are equipped with two handles

# WIDE NECK DRUMS

## NESTABLE UN-1H2

Nestable drums with handles from 30 to 60 litres. Space saving and ergonomic in use.



art. n°	dimensions	capacity	opening	max. weight
<b>7230H</b>	ø374 x 408 mm	ø326 mm	30 ltr	40 kg
<b>7240H</b>	ø374 x 570 mm	ø326 mm	40 ltr	65 kg
<b>7250H</b>	ø374 x 660 mm	ø326 mm	50 ltr	65 kg
<b>7260H</b>	ø374 x 770 mm	ø326 mm	60 ltr	65 kg

On request, we also supply square and biobased drums.



Square drums with handles available in 40, 50, 66, and 80 litres.

Nestable plastic drums with screw lids are ideal for the safe and efficient packaging of solid substances. They feature a watertight closure with tamper-evident sealing, protecting the contents against moisture, contamination, and manipulation. The drums are UN certified (1H2) for hazardous solid substances and are suitable for use with food products. Thanks to the nestable design, they require minimal space when empty, facilitating transport and storage. The handles ensure comfortable and safe handling.



ref. n°	description
<b>7800</b>	length 225 mm, 1000 per box



**Place the lid on the drum and tighten it firmly by turning clockwise. Use a tool to turn the lid an additional 30°. The drum is then liquid-tight and the UN marking is valid.**

# PAILS

Straightforward pails with or without lid and handle. The white pails below are foodproof.

Plastic pails are primarily used within the pharmaceutical sector where precision and manual dosing are essential. Typical applications include weighing active substances, packaging batch samples, or temporarily storing cleaning agents. Thanks to their compact size, the pails are ideal for use at workbenches and in isolators or stainless steel cabinets.

Our pails are available in various volumes and are supplied as standard with a practical carrying handle. For secure closure, the pails can be equipped with drop-on lids or sealable clamp lids. The sturdy base and stable shape make them suitable for intensive daily use.

A functional and reliable solution for controlled processes in laboratory and cleanroom environments.



**Pails used for the storage and transport of cooked and peeled eggs.**

## Pails with handle, pouring spout, and capacity-marking



art. n°	dimensions	capacity	weight	description
E015-0	ø280x320 mm	15 ltr.	1 kg	white pail with capacity marking
E018-0	ø370x340 mm	18 ltr.	1,1 kg	white pail with capacity marking
E021-0	ø380x340 mm	21 ltr.	1,3 kg	white pail with capacity marking

The sealable pails shown below are suitable for food products and intended for single use.

ø221 x 220 mm  
capacity 5,5 ltr.



art. n°	description
E005-0	pail, white ø221x220 mm

ø380 x 370 mm  
capacity 28 ltr.



art. n°	description
E028-0	pail, white ø380x370 mm

## clamp lid



art. n°	description
E005D-0	clamp lid, ø221 mm, white

## clamp lid ø380 mm



art. n°	description
E028D-0	clamp lid ø380 mm, white

## HYGIENE BINS

### BIN TROLLEYS AND DISPENSERS

Mobile large-volume hygiene bins are used in the pharmaceutical industry and various other sectors. Thanks to the smooth walls of the large-volume hygiene bins, they are easy to clean and meet strict requirements regarding hygiene, stability, ease of handling and long service life.

**970 x 670 x 710 mm, 304 ltr.**  
(830 x 520 x 610 mm internal structure)  
**weight: 15,6 kg**



art. n°	description
<b>GV-976771-0B0Q-0</b>	mobile hygiene bin, 304 litres, MDPE, with 2 nylon swivel castors and 2 nylon fixed castors, white
<b>GV-9767-D0-02-0</b>	lid for large volume bin 304 litres, white

**500 x 500 x 715 mm, 125 ltr.**  
(405 x 405 x 690 mm internal structure)  
**weight: 5,7 kg**



art. n°	description
<b>GV-505070-000J-0</b>	lid for large volume bin 304 litres, white
<b>GV-5050-D0-01-0</b>	hygiene bin lid, 500 x 500 x 30 mm, white

Plastic ingredient and hygiene bins in various sizes. Ideal for the storage of raw materials and other ingredients. As standard, we keep these in stock in white, other colours are available on request.

**610 x 370 x 672 mm, 65 ltr.**  
(510 x 270 x 570 mm internal structure)  
**weight: 6,8 kg**



**610 x 570 x 672 mm, 142 ltr.**  
(510 x 470 x 570 mm internal structure)  
**weight: 8,7 kg**

art. n°	description
<b>GV-613767-0A0Q-0</b>	mobile ingredient bin with 4 swivel castors and galvanised castor forks, MDPE, white, lid excluded
<b>GV-6137-D0-0Q-0</b>	drop on lid with hinged flap, transparent, for GV-613767-0A0Q-0
<b>GV-615767-000Q-0</b>	mobile ingredient bin with 4 swivel castors and galvanised castor forks, MDPE, white, lid excluded
<b>GV-6157-D0-0Q-0</b>	drop on lid with hinged flap, transparent, for GV-615767-000Q-0

**dispenser, white**  
**24 ltr.**



art. n°	description
<b>GV-462046-000Q-0</b>	465 x 205 x 460 mm, 24 ltr. weight: 2,7 kg
<b>GV-612767-000Q-0</b>	610 x 275 x 670 mm, 65 ltr. weight: 5,6 kg



# TRANSPORT AND STORAGE BINS

VIRGIN PLASTIC  
**NORMBOX™**

**Interiors in various sizes, for clear organisation inside your container.**



**We supply many sizes suitable for 400 x 300 or 600 x 400 containers.**



art. n°	standard versions for 400x300x80 mm
<b>20-2002</b>	10 compartment divider, foam included
<b>20-2001</b>	14 compartment divider, foam included
<b>20-2005</b>	24 compartment divider, foam included



art. n°	length 1150, divider strip 20 mm
<b>M 40.1150</b>	height 40 mm
<b>M 100.1150</b>	height 100 mm
<b>M 180.1150</b>	height 180 mm

**Available in various lengths. More information can be found on our website.**

Normbox™ is suitable for applications where product safety and material purity are of critical importance, such as pharmaceutical production environments. The container is manufactured from high-quality virgin PPcop and is safe for direct contact with food products or primary packaging. With 20% higher impact resistance compared to standard versions, this variant provides additional security during internal transport and handling. The containers can be marked for material origin and identification. On request, we supply the corresponding material declarations and food grade certificates.



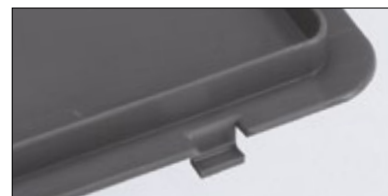
art. n°	dimensions	capacity	handle
<b>EN-2112-1-7</b>	200x150x117 mm	2 l	close
<b>EN-3212-1-7*</b>	300x200x120 mm	5 l	close
<b>EN-3222-1-7*</b>	300x200x220 mm	9 l	close
<b>EN-4306-1-7</b>	400x300x60 mm	6 l	close
<b>EN-4312-1-7*</b>	400x300x120 mm	10 l	close
<b>EN-4317-1-7</b>	400x300x170 mm	15 l	close
<b>EN-4322-1-7*</b>	400x300x220 mm	20 l	close
<b>EN-4327-1-7</b>	400x300x270 mm	25 l	close
<b>EN-4332-1-7*</b>	400x300x325 mm	30 l	close

**\* Also available from stock in blue and red**

Our Normboxes can be equipped with various types of lids:



*Hinged lid.*



*Hook-in lid.*



*Clamp lid.*



*Drop-on lid.*

# TRANSPORT AND STORAGE BINS

VIRGIN PLASTIC  
**NORMBOX™**

**BASE SIZE**  
**600X400**  
**800X600**



**NORMBOX™**

art. n°		dimensions	capacity	handle
EN-6407-1-7		600x400x75 mm	14 l	close
EN-6412-1-7*		600x400x120 mm	20 l	close
EN-6417-1-7		600x400x170 mm	30 l	close
EN-6422-1-7*		600x400x220 mm	40 l	close
EN-6422-2-7*		600x400x220 mm	40 l	close
EN-6428-1-7		600x400x278 mm	53 l	close
EN-6428-2-7		600x400x278 mm	53 l	open
EN-6432-1-7*		600x400x325 mm	60 l	close
EN-6432-2-7*		600x400x325 mm	60 l	open
EN-6442-1-7		600x400x425 mm	90 l	close
EN-8612-1-7		800x600x120 mm	45 l	close
EN-8622-1-7		800x600x220 mm	90 l	close
EN-8632-1-7		800x600x325 mm	134 l	close
EN-8642-1-7		800x600x425 mm	175 l	close

\* Also available from stock in blue and red

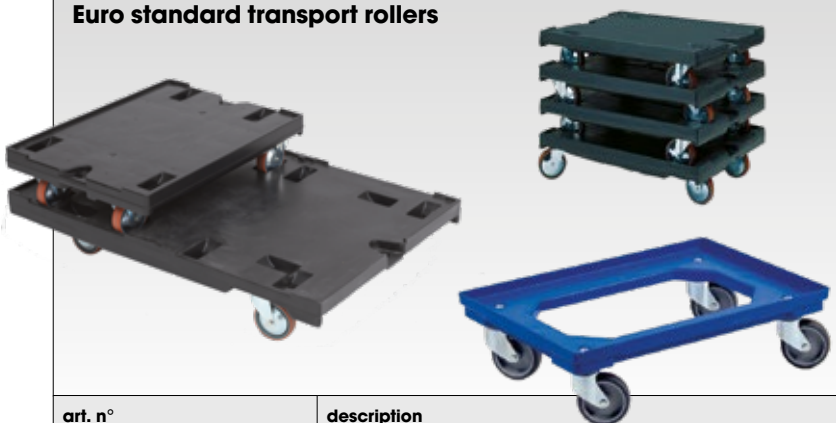


**We keep storage bins and Normboxes in stock in black conductive plastic. This prevents electrostatic discharges (ESD) that can damage micro-electronics during production and storage.**



**On request, all our containers can be equipped with reinforced bases, capable of carrying up to 50 kilograms without bending. This ensures safe handling in automated warehouses.**

## Euro standard transport rollers



art. n°	description
80-184-185	800x600 mm, closed, max. load capacity 500 kg
80-954-85	1200x800 mm, closed, max. load capacity 500 kg
TR-614116-101S-5	600x400 mm, open, max. load capacity 200 kg



**Standard smooth base.**



**Open-structured reinforced base. Carries 50 kilograms. Only available for project-based deliveries.**

# ACCESSORIES EURO STANDARD BINS

## FOAM INTERIOR



**Starter foam set**

The foam sheets of the starter sets enclose the pick and pluck foam blocks inside a case. Foam sheets available from stock, suitable for our containers:

Foam sheets (single piece, not die cut)		
art. n°	container base size	height
S 3205	300 x 200 mm	5 mm
S 3210	300 x 200 mm	10 mm
S 3215	300 x 200 mm	15 mm
S 3220	300 x 200 mm	20 mm
S 3225	300 x 200 mm	25 mm
S 3230	300 x 200 mm	30 mm
S 4305	400 x 300 mm	5 mm
S 4310	400 x 300 mm	10 mm
S 4315	400 x 300 mm	15 mm
S 4320	400 x 300 mm	20 mm
S 4325	400 x 300 mm	25 mm
S 4330	400 x 300 mm	30 mm
S 6405	600 x 400 mm	5 mm
S 6410	600 x 400 mm	10 mm
S 6415	600 x 400 mm	15 mm
S 6420	600 x 400 mm	20 mm
S 6425	600 x 400 mm	25 mm
S 6430	600 x 400 mm	30 mm

Polyethylene pick and pluck foam blocks provide safe and stabilised positioning of pharmaceutical instruments or components within our Euroline bins. Thanks to the dimensionally stable fit, the foam blocks fit tightly inside the bin, preventing products from shifting during internal transport or storage. In higher bins, multiple layers can be stacked to allow separated storage of multiple sets. The blocks have a thickness of 50 mm, matched to the modular construction of the Euroline bins, where the height increases in steps of 50 mm.



*"Do it yourself" foam interior, perforation 15 x 15 mm. By tearing out the blocks, you can create your own custom interior.*

art. n°	description	height
S 43-1	starter set 400 x 300 mm, with 2 sheets (1 self adhesive for the lid and 1 for the base)	5 mm per sheet
S 43-2	pick and pluck foam block for 400 x 300 mm containers	50 mm
S 64-1	starter set 600 x 400 mm, with 2 sheets (1 self adhesive for the lid and 1 for the base)	5 mm per sheet
S 64-2	pick and pluck foam block for 600 x 400 mm containers	50 mm



Producing foam interiors by die cutting is the most cost-effective method, but it requires a one-time investment in a cutting die. An alternative is water jet cutting or milling; from just a few pieces onwards, we provide custom solutions based on drawings supplied by you or, even more conveniently, the product to be packed. See the examples above.

Insulated boxes are used for the transport of chilled and frozen products. The insulated containers are of double-walled construction. The inner walls are filled with PU foam. Thanks to this combined construction, the containers are shock resistant, impact resistant, and highly durable.



*Isothermal transport containers, for example for medicines.*

	art. n°	dimensions	description	capacity
1	36-204-0-ISO	400x300x235 mm	insulated box, blue	7,7 ltr.
2	36-205-0-ISO	400x300x335 mm	insulated box, blue	13,7 ltr.
3	36-407	600x400x365 mm	insulated box, blue	48 ltr.

art. n°	dimensions
38-209 H633-FL5	600 x 400 x 633 mm, 5 bottles Ø165 mm
38-209 H844-FL5	600 x 400 x 844 mm, 5 bottles Ø175 mm
38-209 H633-FL6	600 x 400 x 633 mm, 6 bottles Ø162 mm
38-209 H640-FL6	600 x 400 x 640 mm, 6 bottles Ø164 mm
38-209 H660-FL6	600 x 400 x 660 mm, 6 bottles Ø164 mm
<b>this is an assembly item, adapted to the diameter of the cylinders.</b>	



**For customer: Linde Gas for the transport and filling of oxygen cylinders using EPP foam interiors. Also for the chilled distribution of blood samples for Sanquin.**

**By fixing two containers with a 600 x 400 mm base size together, the upper one with holes in the base matching the diameter of a compressed air cylinder and the lower one with a compartment divider, we create a compressed air cylinder container that is strong and compatible with other standard *NORMBOX*™ containers.**



# DISTRIBUTION BINS

## HEAVY DUTY **DISTRIBOX™**

These robust bins are fully designed with functionality and ease of use in mind: protected hinges, ergonomic handles, simple quick-closing, and a chamfered base, making them suitable for roller conveyors. The bins are nestable, which can result in space savings of up to 70% when stacked.



art. n°	descriptions
<b>5121-0_DOOS</b>	standard sealing plugs, 5,000 pieces
<b>5100-UN-X</b>	UN X sealing strips, 2,500 pieces



### **DISTRIBOX HD**

art. n°	capacity	description
<b>5105-00-825</b>	20 ltr.	400 x 300 x 275 mm (325 x 227 x 238 mm internal dimensions)
<b>5109-00-825</b>	23 ltr	400 x 300 x 320 mm (400 x 300 x 320 mm internal dimensions)
<b>5102-00-825</b>	25 ltr.	500 x 300 x 274 mm (422 x 227 x 239 mm internal dimensions)
<b>5103-00-825</b>	45 ltr.	600 x 400 x 275 mm (528 x 328 x 238 mm internal dimensions)
<b>5107-00-825</b>	52 ltr	600 x 400 x 320 mm (523 x 323 x 283 mm internal dimensions)
<b>5100-01-825</b>	60 ltr.	600 x 400 x 374 mm (527 x 315 x 335 mm internal dimensions)
<b>5106-00-825</b>	90 ltr.	800 x 400 x 400 mm (703 x 313 x 363 mm internal dimensions)



**Simple closure.**



**Nestable.**



**Standard label holder on closed ergonomic handles.**

## DISTRIBUTION BINS

UN-APPROVED  
**DISTRIBOX™**

The transport of dangerous goods is only permitted in UN approved packaging. The UN marking indicates that the packaging corresponds to a distribution bin that has been tested and complies with UN regulations. Engels follows all procedures to UN certify and maintain certification of its products in order to comply with ADR regulations.



For UN certification, the use of sealing strips is mandatory, while sealing plugs mainly serve as a tamper-evident closure that makes it visible whether a package has been opened.



**Because the bins are perfectly nestable, space savings are achieved, ultimately resulting in lower logistics costs.**



art. n°	capacity	descriptions
<b>5105-05-834</b>	20 ltr.	400 x 300 x 275 mm
<b>5109-05-834</b>	23 ltr	400 x 300 x 320 mm
<b>5102-05-834</b>	25 ltr.	500 x 300 x 274 mm
<b>5103-05-834</b>	45 ltr.	600 x 400 x 275 mm
<b>5107-05-834</b>	52 ltr	600 x 400 x 320 mm
<b>5100-05-834</b>	60 ltr.	600 x 400 x 374 mm
<b>5100-05V-834</b>	60 ltr.	600 x 400 x 374 mm, UN-X incl. liquids



**Robust, nestable bins with integrated lids and UN markings for solid materials.**



**Ergonomic handling thanks to the handle design.**

The lidded containers on this page are UN approved and suitable for the transport of dangerous goods in accordance with ADR packaging regulations.

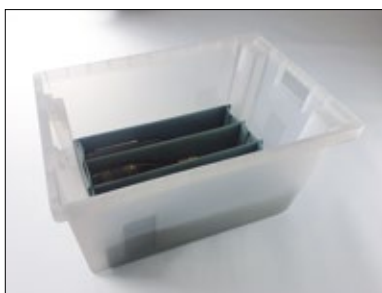
# TRANSPORT AND STORAGE BINS

## STOCK NESTABLE BINS

**TURNBIN™**

### Features:

- Nestable and stackable.
- Suitable for automated transport systems thanks to the smooth base.
- Ideal as an internal transport solution for companies.
- Space saving during return transport.
- Possibility of personalisation (printing or barcode labels).



**Equipped with a leak-tight bottle carrier for a large e-retailer.**



Drop-on lid

art. n°	dimensions
<b>SND-64-0.700</b>	600x400 mm



**From 1.000 pieces onwards, rotating stackable bins are available in other colours.**

Stock nestable bins are practical for use in, among other things, order picking processes and the transport of various goods.



art. n°	internal dimensions	external dimensions	capacity
<b>SN-6415.500</b>	600x400x150 mm	490x332x145 mm	25 ltr
<b>SN-6420.500</b>	600x400x200 mm	490x332x195 mm	35 ltr
<b>SN-6430.500</b>	600x400x300 mm	490x332x295 mm	50 ltr
<b>SN-6440.500</b>	600x400x400 mm	490x332x395 mm	70 ltr



Bins with reinforced bases on a distribution system for e-fulfilment. (Photo: Vanderlande Industries)

Smooth bases, optionally reinforced, make the rotating stackable bins particularly suitable for automated transport systems. The ideal combination of an internal transport solution within the company and a reusable packaging solution for external transport.

## FOLDABLE PALLET BOXES

## REUSABLE TRANSPORT PACKAGING

The Reusable Hygienic Transport Packaging (RTP) is particularly suitable for the pharmaceutical sector. Thanks to the smooth, rib-free design, the packaging is easy to clean and suitable for use in controlled environments. The RTP provides a sustainable alternative to single use packaging and forms part of a closed system in which hygiene, reuse, and space saving are combined.



**The three components of the Reusable Hygienic Transport Packaging together form one compact return unit. After use, the pallet, collar, and lid fit seamlessly together. This keeps the return flow organised and prevents loose components during storage and transport.**



**An empty RTP is only 230 mm high. Thanks to the foldable collars, the packaging takes up little space when empty, resulting in significant savings on storage and transport costs. The combination of hygienic design and space saving makes the RTP a smart choice for closed loop systems with high turnover rates.**

The collar and pallet base of the RTP are fully smooth in design. This allows them to be cleaned easily and quickly, without dirt or moisture accumulating. Ideal for applications with strict hygiene requirements.

# FOLDABLE PALLET BOXES

HYGIENIC  
HEAVY DUTY

Smartbox hygiene pallet boxes are ideally suited for the pharmaceutical sector due to their large usable volume and compact return format. They are used for round trip transport of semi-finished products and raw materials. The smooth design and stable construction make these boxes suitable for controlled environments with strict requirements for cleanliness and handling.

Long term load capacity up to 1,000 kg per box and 5,000 kg when stacked. Short term load tested up to 10,000 kg.



**Base configurations: 4 feet, 2 or 3 runners (reinforced version).**



**Space saving ratio at 805 mm height 3:1, at 978 mm height 7:3.**



**Smartbox collar.**

Smartbox hygiene pallet boxes are designed without hollow spaces and with a minimal number of ribs, preventing dirt or moisture from collecting. The smooth walls protect the contents and are easy to clean. Even when folded, the construction remains tight and flat, without water accumulation.

These pallet boxes are interchangeable with virtually all non-foldable boxes with the same base dimensions.

**1200 x 800 x 978 mm, 655 ltr.**

(1120 x 720 x 803 mm internal dimensions)

**weight 43 kg**

**1200 x 800 x 805 mm, 515 ltr.**

(1120 x 720 x 630 mm internal dimensions)

**weight 40 kg**



*Europallet compatible Smartboxes.*

1200 x 800	805 mm height, 515 ltr.		978 mm height, 655 ltr.	
	2 skids	3 skids	2 skids	3 skids
closed base / side walls	1387C2	1387C3	1389C2	1389C3
	40 kg	43 kg	45 kg	48 kg
perforated base / side walls	1387F2	1387F3	1389F2	1389F3
	38 kg	41 kg	43 kg	46 kg



art. n°	description
1PETSP02	label holder A5, red
1PETS42	label holder A4, red
1PETS45	label holder A4, black

# FOLDABLE PALLET BOXES

HYGIENIC  
HEAVY DUTY

**1200 x 1000 x 805 mm, 668 ltr.**

(1120 x 920 x 630 mm internal dimensions)

**weight 48,5 kg**

**1200 x 1000 x 978 mm, 839 ltr.**

(1120 x 920 x 803 mm internal dimensions)

**weight 57,5 kg**



Block pallet compatible Smartboxes.

1200 x 1000	805 mm height, 668 ltr.		978 mm height, 839 ltr.	
	2 skids	3 skids	2 skids	3 skids
base / side walls closed	1307C2	1307C3	1309C2	1309C3
	45,5 kg	48,5 kg	54,5 kg	57,5 kg
base / side walls perforated	1307F2	1307F3	1309F2	1309F3
	44,5 kg	47,5 kg	53,5 kg	56,5 kg



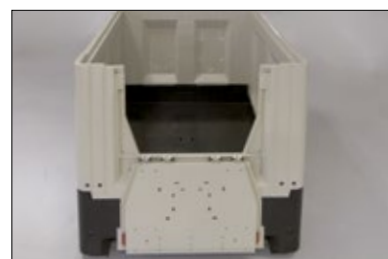
**The lids of our Maxi and Strong-box series also fit perfectly on the Smartbox™. Optionally lockable, just like on the non foldable boxes.**



**Drop flap on one or two long sides, height option 280 or 370 mm.**



For a customer in the pharmaceutical industry, we supply various dissolving liquid containers with capacities up to 1.000 litres.



**Drop flap on one or two short sides for the 800 and 1000 mm wide versions, height 375 mm.**

# EXPORT PALLETS

NESTABLE  
**E-LINE™**



art. n°	weight	dimensions mm
	static	dynamic
<b>C PP 190 PO</b>	3,0 kg	800x600x120
	2000 kg	500 kg
<b>CPP 200 PO</b>	4,0 kg	800x600x130
	2500 kg	1000 kg

**Option: runners or runner cross.**



**Due to their chamfered feet, nestable pallets fit perfectly into aircraft containers.**



Export pallets are usually nestable, allowing cost effective transport and compact storage. Do you want to stack them when loaded, or use them on roller conveyors? In that case, we supply them with skids that can easily be clicked underneath. Our export pallets can be equipped with skids, making them suitable for use in racking systems, up to a maximum load of 600 kg.



art. n°	description	weight	load capacity (evenly distributed)	
			static	dynamic
<b>CPP 790 PE-R</b>	1200 x 800 x 130 mm, black, 9 feet, nestable, open deck with stacking rim	6 kg	1600 kg	1000 kg
<b>CPP 210 PO</b>	1200 x 800 x 140 mm, black, 9 feet, nestable, open deck with stacking rim	9 kg	3200 kg	1200 kg



art. n°	description	weight	load capacity (evenly distributed)	
			static	dynamic
<b>CPP 110 PO</b>	1200 x 1000 x 135 mm, black, 9 feet, nestable, open deck with stacking rim	6 kg	1600 kg	1000 kg
<b>CPP 300 PO</b>	1200 x 1000 x 135 mm, black, 9 feet, nestable, open deck with stacking rim	11 kg	4000 kg	1400 kg

## EXPORT PALLETS

HEAVY LOAD  
**E-LINE™**

For heavier products such as drums, nestable pallets often do not meet the required load capacity or shape. For this reason, we also keep industrial pallets made of PO material in stock.

Plastic pallets are high-tech products. Thanks to intensive research, each new generation offers higher load capacity and increased resistance to rough handling. Selecting the right pallet for your operational environment requires know-how. We are happy to advise.



art. n°	description	weight	load capacity (evenly distributed)		
			static	dynamic	racking
<b>CPP 878 PO</b>	1200 x 800 x 150 mm, black, 3 runners, open deck with stacking rims	13 kg	8000 kg	2500 kg	500 kg
<b>CPP 888 PO</b>	1200 x 800 x 160 mm, black, 3 skids, open deck with stacking rims	21 kg	14000 kg	3500 kg	1000 kg



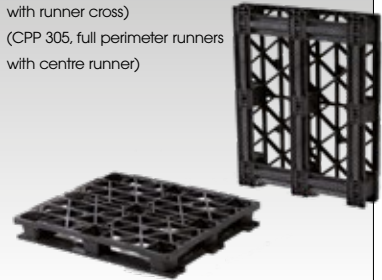
art. n°	description	weight	load capacity (evenly distributed)		
			static	dynamic	racking
<b>CPP 881 PO</b>	1200 x 1000 x 160 mm, black, 3 runners, open deck with perimeter stacking rim	24 kg	14000 kg	3500 kg	1000 kg

**CPP 300 pallets, with full perimeter runners and runner cross or centre runner mounted underneath.**

**1200 x 1000 x 150 mm**

(CPP 306, full perimeter runners with runner cross)

(CPP 305, full perimeter runners with centre runner)



art. n°	weight	dimensions mm		
		static	dynamic	racking
<b>CPP 305 PO</b>	15,5 kg	1200x1000x150		
	8000 kg	2400 kg	600 kg	
<b>CPP 306 PO</b>	16,0 kg	1200x1000x150		
	8000 kg	2400 kg	600 kg	

The CPP 400 series pallets are equipped with 9 feet and supplied as standard in PO. The dimensions of these pallets ensure optimal use of space in sea containers.

**1100 x 1100 x 140 mm (CPP 400)**

**1140 x 1140 x 140 mm (CPP 440)**

**1200 x 1200 x 140 mm (CPP 450)**



art. n°	weight	load capacity (evenly distributed)	
		static	dynamic
<b>CPP 400 PO</b>	11 kg	4000 kg	1500 kg
<b>CPP 440 PO</b>	11,5 kg	4000 kg	1500 kg
<b>CPP 450 PO</b>	12 kg	4000 kg	1500 kg

# HYGIENE PALLETS

## HEAVY DUTY

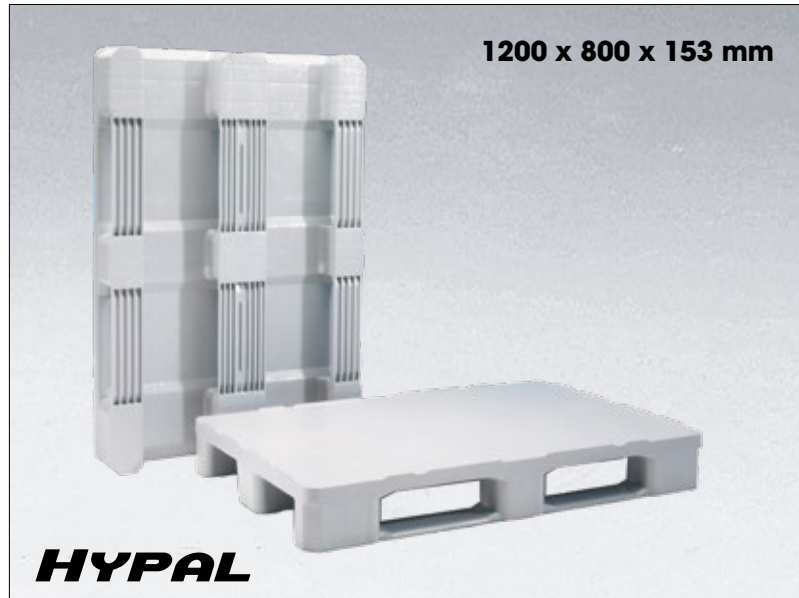
Hygiene pallets made of HDPE are very strong for their weight due to their sandwich construction with internal reinforcements. Standard colours are light grey and dark grey. On request, we also supply blue, white, and beige.

These pallets are highly suitable for use in pharmaceutical, chemical, food, or cleanroom environments, as there is no possibility of dirt or liquid accumulation and the pallets are easy to clean, even manually.

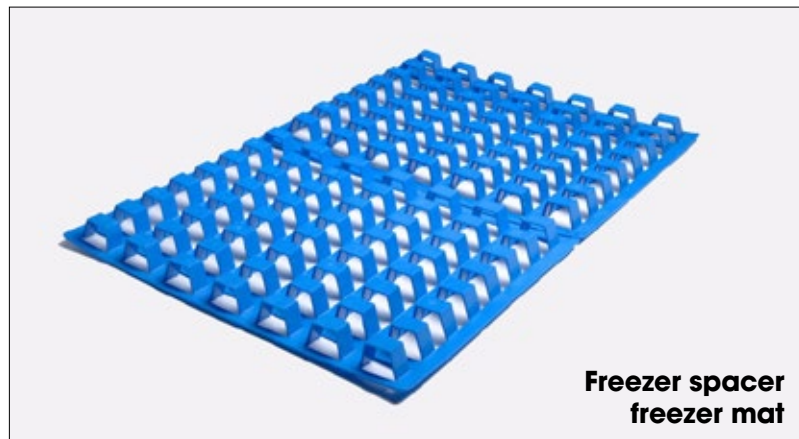
Plastic pallets significantly improve logistics flow and quality control. Unlike a wooden pallet, a plastic pallet can be loaded directly at hygiene sensitive production lines. Time-consuming order preparation and the use of thick gloves to protect against wood splinters are no longer required.

For consistent and clean processes, the use of plastic pallets throughout the entire supply chain is a sustainable and sensible investment that quickly pays for itself.

Hygiene pallets are made of HDPE and are very strong for their weight due to their sandwich construction with internal reinforcements. Extra heavy-duty hygiene pallets can be equipped with internal steel reinforcement profiles. In addition, RFID transponders can be integrated into these pallets.



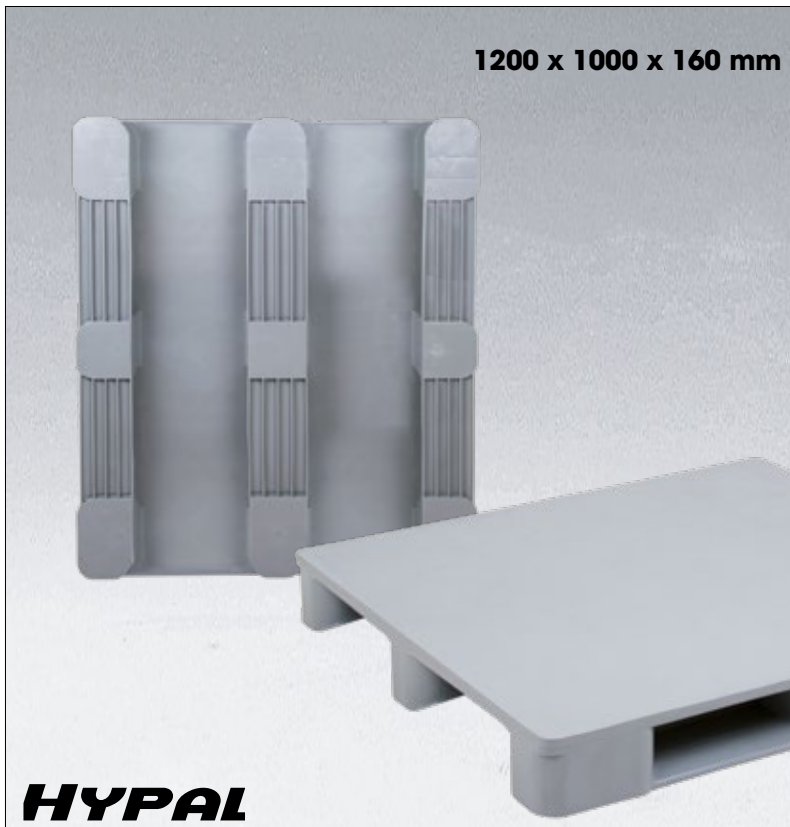
art. n°	description	weight	load capacity (evenly distributed)		
			static	dynamic	racking
HP-120815-030B-7	PE, grey, 3 runners, fully closed deck	18 kg	4800 kg	1200 kg	1000 kg
HP-120815-033B-R	PE, recycled dark grey, 3 runners, fully closed deck	18 kg	4800 kg	1200 kg	1000 kg



art. n°	description
FS-1208-0-5	blue, 1200 x 800 x 50 mm, HDPE

# HYGIENE PALLETS

HEAVY DUTY

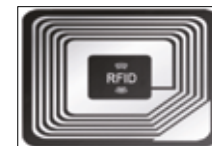


For hygiene pallets, the top and bottom sections are injection moulded separately and then welded together. As a result, all reinforcement ribs are located on the inside and the exterior is completely smooth all around. There are no gaps, seams, or hidden areas where mould or bacteria can accumulate.



Fully smooth outer surface.

art. n°	description	weight	load capacity (evenly distributed)		
			static	dynamic	racking
<b>HP-121016 030B-7</b>	PE, grey, 3 runners, fully closed deck	23 kg	5000 kg	2500 kg	1250 kg
<b>HP-121016 033B-R</b>	PE, recycled dark grey, 3 runners, fully closed deck	23 kg	5000 kg	1250 kg	750 kg

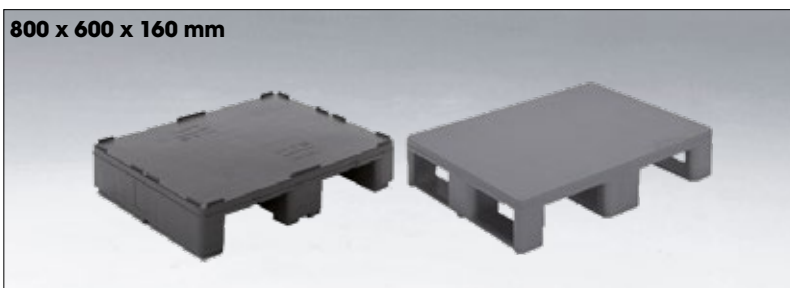


Option: RFID.

As standard, we supply the pallets with 7 mm raised edges. On request, raised edges of 22 mm are also available.



Option: steel reinforcement.



art. n°	description
<b>33-8060 D</b>	grey, 3 runners, closed deck, metal reinforced, internal stacking rim
<b>33-8060-630</b>	grey, 3 runners, smooth closed deck, without stacking rim



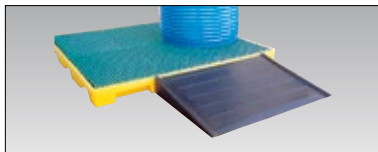
# PREVENT LEAKAGE

## FLOORS

Safe handling of liquids is crucial in the pharmaceutical sector. Our modular spill containment floors, available in units of 1.5 and 0.75 m<sup>2</sup>, are designed for 200 litre drums and together form a stable, liquid-tight working floor with a load capacity of up to 666 kg per m<sup>2</sup>.

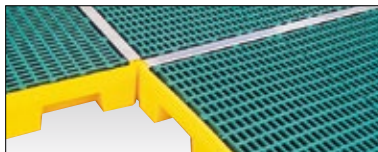
The spill pallets within the E-line philosophy are manufactured from recycled polyethylene and are UV resistant, and nestable. This combines sustainability with reduced storage and transport costs.

Engels products serve logistics and a better environment. That is why we offer a wide range of leak prevention solutions, including spill pallets, containment floors, and absorbent materials.



art. n°	dim. mm.
<b>LB RAPFR</b>	775 x 580 x 115 mm
<b>LB RAMPE</b>	1200 x 800 x 150 mm

Makes it easier to roll drums onto the work floor.



art. n°	dim. mm
<b>LB C JOINT</b>	1195 x 40 x 35 mm

With stainless steel connection profiles, you can link your floor units into one solid system.

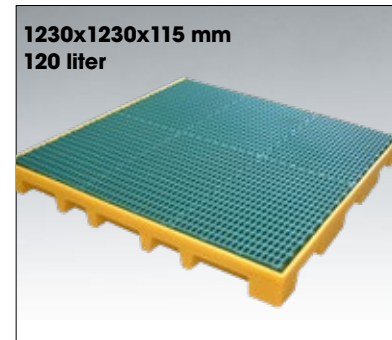


A sheet metal welded spill tray resting on the beams of a pallet racking system. Capacity and dimensions can be flexibly adapted to the racking system you use.



**1245x625x115 mm**  
**60 liter**

art. n°	description
<b>LB PFCP 60</b>	plastic grid
<b>LB PFCG 60</b>	galvanised grid



**1230x1230x115 mm**  
**120 liter**

art. n°	description
<b>LB PFCP 120</b>	plastic grid
<b>LB PFCG 120</b>	galvanised grid



**1270x825x150 mm**  
**120 liter**

art. n°	description
<b>LB PFRP ECO120</b>	plastic grid



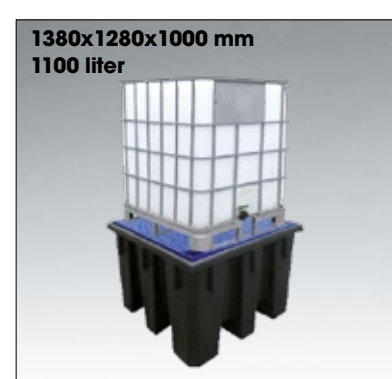
**1280x1230x150 mm**  
**180 liter**

art. n°	description
<b>LB PFRP ECO180</b>	plastic grid



**925x755x555 mm**  
**225 liter**

art. n°	description
<b>LB BRCE COP 225</b>	nested 20 per stack (2.4 m high)



**1380x1280x1000 mm**  
**1100 liter**

art. n°	description
<b>LB BRCECOP 1100</b>	nested 20 per stack (2.4 m high)

## WHEELIE BIN 2- AND 4- WHEEL

Our MGB 660 ZHA and MGB 770 ZHA are supplied without a pour stop, in accordance with UN regulations. Bacteria cannot settle in joints or on the smooth surface.



art. n°	dimensions	capacity	description
<b>MGB-240-ZHA</b>	580x740x1070 mm	240 ltr.	2-wheel container for hospital waste
<b>MGB-360-ZHA</b>	600x890x1100 mm	360 ltr.	2-wheel container for hospital waste
<b>MGB-660-ZHA</b>	1210x765x1210 mm	660 ltr.	4-wheel container for hospital waste
<b>MGB-770-ZHA</b>	1371x779x1316 mm	770 ltr.	4-wheel container for hospital waste



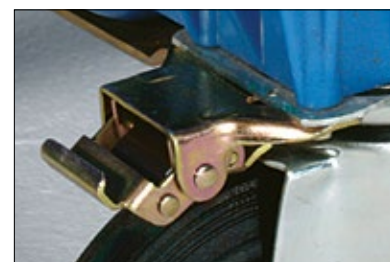
The body and lid can be provided with screen printing, stickers, or hot stamping.



For safe and efficient waste collection, various drop openings are available for liquids, glass, and (confidential) paper. These lids can be supplied with a lock.



By coupling the containers into a train, you can collect up to six containers in a single run, saving a considerable amount of time.



Directional locks provide improved manoeuvrability and are mandatory when used in combination with a drawbar system. Two are required per container.



Forklift pockets for fast transport and easy tipping.



Waste bags suitable for hospital waste.

## REFERENCE CASE

Máxima Medical Centre (MMC), a top clinical hospital in the Brainport region, has been a long standing partner of Engels in the field of waste management. With two locations, in the heart of Eindhoven and on the border of Eindhoven and Veldhoven, MMC works every day to improve the health of the region. Behind the scenes, staff also work continuously on logistics and waste processing within the hospital, where Engels has played an important role for more than 15 years by supplying, amongst other things, waste containers.

**For many years, Máxima Medical Centre has chosen the quality and service of Engels. Whether it concerns pallet boxes, E-line containers, or waste containers, Engels products have proven their value. By investing in new, sustainable waste containers, MMC once again demonstrates its commitment to clean and efficient waste management, where sustainability and ease of use go hand in hand.**

**This long standing cooperation between MMC and Engels not only highlights the importance of sustainable waste management in healthcare, but also the trust the hospital places in the products and solutions of Engels. Together, we continue to work towards a cleaner and healthier future.**



### The challenge

In 2022, it became clear that the container park of the Máxima Medical Centre needed to be re-evaluated and partially replaced. Despite annual maintenance, during which worn components were repaired, part of the containers no longer met the required standards. The logistics team was satisfied with the drawbar combination and the non-marking wheels of the existing waste containers and wished to retain these features in the new containers.

In addition, MMC required a solution for opening the container lids. This was to ensure that staff could easily dispose of waste into the container using both hands.

### The solution

After consultation, it was decided to equip the new residual waste and operating theatre containers with the Engels drawbar system and a hygienic foot pedal. This foot pedal allows the lid to be opened with minimal effort. In combination with the drawbar system, it ensures that waste handling becomes both more ergonomic and more hygienic.

Below you will find the specifications of the waste container.

### Sustainability

At both the Máxima Medical Centre and Engels, sustainability is a key priority. At Engels, reuse always takes precedence over recycling. In line with this philosophy, the MMC decided to donate a large number of their old containers that were no longer suitable for use, rather than having them destroyed. As many as 45 containers were refurbished and given a second life elsewhere. This not only supports sustainable waste management, but also prevents the loss of valuable materials.



**Volume and dimensions:**

770-liter, 1370x770x1355 mm, 41 kg.

**Material:**

Made of HDPE (polyethylene), UV and frost resistant, compliant with EN 840 standard.

**Waste fractions:**

Coloured lids for easy separation of waste streams (grey for residual waste, blue for paper, green for operating theatre waste).

**Mobility:**

Four swivel castors (ø200 mm), two with brakes, for easy manoeuvring.

**Non marking wheels:**

Grey elastic rubber, suitable for indoor use.

**Foot pedal:**

Hygienic foot pedal with hydraulic damper for silent closing.

**Coupling system:**

5 mm steel coupling systems for transport as a train behind electric vehicles.

**Functionality:**

Compatible with waste handling systems thanks to KAM and DIN lifting interfaces.

**Choice for Engels**

Máxima Medical Centre has chosen the quality and service of Engels for many years. Whether it concerns pallet boxes, E-line containers or waste containers, Engels products have proven their value. By investing in new, sustainable waste containers, MMC once again demonstrates its commitment to clean and efficient waste management, where sustainability and ease of use go hand in hand.

This long standing cooperation between MMC and Engels not only highlights the importance of sustainable waste management in healthcare, but also the trust the hospital places in the products and solutions of Engels. Together, we continuously work towards a cleaner and healthier future.



**Location:**

MMC, Veldhoven.

**Product type:**

770 litre waste container with hinged lid.

**Quantities:**

17 residual waste containers, 8 operating theatre containers, 15 paper containers and 45 residual waste containers.



**Want to see more?**

Visit our website to view all brochures by industry and product group.

**STORAGE AND TRANSPORT BINS**



**CUSTOM AND EURONORM CASES**



**WASTE BINS AND CONTAINERS**



**PALLETS AND PALLET BOXES**

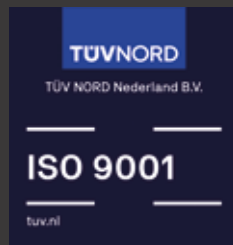


Engels Protechnic Ltd. is part of the Engels Group NV, a family business founded in 1955. We think in generations rather than short term profit.

Strong, reusable product packaging and clever waste collecting save valuable resources, this we express in our slogan "serving logistics and the environment".

April 2026 - ENGLISH - Subject to change

All Engels companies have a clear focus on quality. See the certificates below.



**United Kingdom  
Engels Protechnic Ltd.**

West End Trading Estate, Blackfriars Rd,  
Nailsea, Bristol BS48 4DJ

Tel: +44 12 75 81 13 10  
protechnic@engels.eu  
www.engels.uk

**Engels Group NV**

Park Forum 1139  
NL 5657 HK Eindhoven

Tel: +31 40 26 29 222  
group@engels.eu  
www.engels.eu