

High activity urban areas.

Highways & Roads



Safely Marking
The Way Ahead
jointline.co.uk



A 54 Northwich, Chester
Middlewich, Holmes Chapel

18 NORTH WALES, Preston, M6
Manchester, Leeds

Working safely on Britain's busiest roads

Every client and project is unique. We work with each client to tailor the broad range of line marking, civils and surface preparation services that we offer to deliver the best solution for the programme of works.

In our 30-year history, we have built up a broad and deep knowledge base and are renowned for our expertise and market-leading project delivery. This is why we are trusted by public sector organisations and the biggest names in commercial construction across the UK and the rest of the world.

As one of the country's leading independent line marking companies, we are able to offer a variety of services, ranging from highways maintenance, car parks, anti-skid, airfield markings, grooving and various methods of line removal. Our in-house fleet of vehicles includes thermoplastic lorries, paint machines, mobile marking vehicles, grooving machines and high-pressure water (hydroblasting) services.

With branches throughout the UK Jointline are able to provide nationwide coverage to the highest industry standards. With all operatives holding CSCS cards and being NVQ qualified, our customers are assured of the best possible attention and results in a variety of materials.

Specialising in screed, spray, extruded and profiled thermoplastic methods of application, high-pressure spray applied paints including Methyl Methacrylate (MMA), RapidShield and SolidLux internal warehouse treatments and pre-formed markings, we offer an unrivalled, fully guaranteed service.

Thermoplastic Line Marking

Jointline are the market leaders in the application of thermoplastic markings.

Jointline are experts in the field of Thermoplastic Line Marking and are fully approved to Highways Sector Scheme 7. We have satisfied customers including National Highways, Heathrow Airport and Waitrose to name but a few.

Thermoplastic Line Marking involves the heating of raw thermoplastic binder with the desired colour pigment until it becomes liquified and able to be shaped onto the surface in either line or symbol form. Ballotini (glass beads) can be applied to the markings to enhance the retro-reflectivity, so they can easily be seen at night through reflection from car head lights; this also can assist in the antislip nature of the product. Thermoplastic is available in various colours, levels of luminance, skid resistance and reflectivity. Hot applied thermoplastic line markings are extremely durable and long lasting; they are the UK's preferred road marking material.

Some of the ways in which thermoplastic line marking can be applied are:

Screed Application

The screed application is achieved by pouring the thermoplastic material through a heated screed mould or 'line marking pram' shoe. By selecting different sized moulds or shoe, the material can be applied at different widths to suit. Screed application is typically tailored to low output usage, such as hand applied items such as pedestrian crossings, arrows and lettering or to areas where the bigger truck mounted application is not practical.

Extrusion Application

Surface degradation can have a number of negative effects for the road user. The Extrusion application uses our purpose built, self propelled vehicles and highly trained staff to apply hot thermoplastic through a gate opening. This produces a consistent line of pre-determined width and depth onto the prepared road surface. Glass beads, which create a reflective quality, are automatically applied in this one-pass process. The Extrusion Marking system is perfect for high output application such as on major roadways and for traffic lane delineation.

Raised Rib Line Marking

Our Extrusion System can also be used to apply rib line markings. Rib line markings have a textured surface which creates an auditory and sensory effect when driven over. The textured surfaces are created by applying a 'shuttering' technique to the line as it is applied which creates the textured finish to the surface. Raised rib lines are perfect for hard shoulder marking or for delineating road edges such as central reservations. The auditory and sensory effects alert the driver to the fact that they are at the road edge and are an important safety feature of major roads.

Whatever your line marking requirements we are happy to discuss them with you and work with you to provide a quotation and line marking solution perfect for the job in hand.





Painted Systems

Jointline has the extensive knowledge to deliver the best solution for your needs.

We have several types of painted systems which can be applied to create line markings. We decide with our client the best paint system to use taking budget, place of application and desired longevity into account. Our paint systems are often applied using specialist spray equipment or by traditional mask and roll techniques.

Epoxy Paint and Chlorinated Rubber Paint

Epoxy Paint and Chlorinated rubber paint can both be spray or hand applied. They are both relatively quick curing, can be applied in various colours and onto a range of surfaces. Both systems are ideal for use in car parks, factory floors, school playgrounds and for indoor and outdoor sports surfaces.

MMA (Methyl Methacrylate) Line Markings

MMA (Methyl Methacrylate) is a 2 part cold applied resin. MMA cures very quickly so the site can return to normal service very quickly after application. It is an extremely durable product and as such is ideal for use in very high stress locations where extreme wear is expected such as roundabouts, junctions, zebra crossings and roads with very heavy traffic. It can be applied by hand or machine.

Two Pack Epoxy Line Markings

Two Pack Epoxy is a two component product consisting of one part epoxy resin and one part polyamine hardener which are mixed, along with desired pigment prior to application. Because of the resin content 2 pack epoxy is extremely hard wearing and can withstand harsh chemical spills. As a result two pack epoxy paint is suitable for use where heavy traffic will occur such as garages, loading bays, MOT stations, industrial factories, warehouses, car parks, and playgrounds.

Anti-Slip Paint Systems

Depending on the setting of your job you can increase the safety for its users by mixing aggregate into the paint when line marking to create an Anti-Slip paint system. This serves to create a rough surface finish to the line and increases the anti-slip characteristics of the paint. This is particularly useful in settings with heavy pedestrian footfall and also on ramped surfaces in warehouses or other industrial settings to increase the grip of the surface for forklifts or other vehicles.

Water Based Systems

We use water based acrylic line marking paint for school playgrounds and indoor/outdoor sports courts. It penetrates deeply into the substrate creating a virtually seamless finish and can withstand intense wear. It is relatively fast drying, low odour and is available in a range of colours.

Line Marking Removal

Jointline has the capability to meet your specific removal requirements.

It is often essential that existing line markings are removed in their entirety before embarking on a new line marking scheme. Not only will poorly removed line markings look messy, they also pose a serious risk to health and safety and may contravene H&S regulations if they are in any way still visible.

So whether you need to change the layout of a warehouse, car park or major road way; are looking to change the line marking material used on your scheme, or you need to eliminate damaged markings, we will work with you and your budget to ensure that all old line markings are removed safely and efficiently.

At Jointline we employ four permanent methods of line marking removal:

Hydroblasting

The Hydroblasting process uses high pressure water jets to quickly and efficiently remove line markings. This process leaves virtually no damage to the surface from which the line has been removed, reducing the need for patching up and associated costs prior to re-lining or preventing the faster decline of the integrity of the surface. Because hydroblasting uses only water jets there is no environmental impact from this method of line removal.

Thermal Lance

The process of line removal using a thermal lance uses a high temperature lance to burn off the line markings. This is a traditional and cost effective method of line removal.

Shot Blasting

Shot blasting involves firing highly pressurised steel shot at the line to remove it from the surface whilst leaving virtually no damage. Our shot-blasting machinery not only has a low environmental impact, but also incorporates a self-recovering vacuum system ensuring all dust and shot debris is collected during the process.

As well as being quick and efficient, shot blasting is a dry process so allows for re-lining straight away. This process can double up as surface preparation for any new surface materials required.

Scabbling

Scabbling is particularly effective at line removal on concrete surfaces and works by planing off the existing line. This is ideal for small areas where larger equipment either cannot reach or are not cost effective.





High Friction Surfacing

Jointline has a range of high friction surfacing technologies to deliver on safety.

High friction surfacing (or Antiskid) involves the application of high-quality aggregate to the surface using a binder to increase surface friction. The higher the friction the more it helps motorists to stay in control of their vehicles, reduces stopping distances and prevents pedestrians and employees from slipping. It is used for traffic calming, bus or cycle lane demarcation, on roundabout approaches, on ramped areas and at pedestrian crossings.

Jointline Limited are BBA HAPAS approved and have a wealth of experience in the application of high friction surfacing. Along with being an approved installer of High Friction Surfacing for National Highways we work for clients such as Leeds City Council, Nottinghamshire County Council and a number of MAC agents on their anti skid requirements.

We are able to carry out hot applied thermoplastic and cold applied epoxy high friction surfacing depending on client or locality requirements. In addition to proprietary carriageway surfacing using type 1 and type 2 materials, we are also able to offer decorative anti skid works in a variety of applications.

Hot applied Thermoplastic Antiskid

Our hot screed applied thermostatic high friction surface treatment consists of a coloured polymer modified thermoplastic resin incorporating high PSV aggregates and mineral extender. A range of colours and PSV scored aggregates can be used to match your particular job's specifications. The advantage of a thermoplastic (hot applied) system is that they are less weather sensitive and can be applied outside all year round on both new and worn surfaces. The Hot Applied Thermoplastic Antiskid system is fast drying and the area can be back in use only 20 minutes after application. It is particularly suitable for use on asphalt/tarmac but can be used on concrete with some surface preparation.

Cold applied Epoxy Antiskid

Our cold applied Epoxy antiskid/high friction surfacing system combines an epoxy resin combined with calcined bauxite to form a hard-wearing and high performance anti-skid road dressing. The cold applied epoxy system is very resistant to oils and solvent spillages and is suitable for use on traffic junctions, roundabouts, feeder lanes and pedestrian crossings. The seamless nature of this system is a big advantage.

MMA High Friction Surfacing

MMA (Methyl Methacrylate) is a 2 part cold applied resin and when combined with appropriate aggregate is a fantastic, durable high friction surface solution. MMA cures very quickly. The area where it has been applied can be back in operation within only an hour, reducing disruption for regular users of the road or path. MMA High friction surfacing has excellent UV, road salt and chemical resistance increasing the durability of the treated surface.

Airfield Line Marking

Jointline has vast experience in airfield and airport line marking, and we continue to be the market leader for the UK's airports, airfields and MOD bases.

Line marking is an essential element of the airfield infrastructure, from full runway markings to delineation of taxiway markings, or identifying any potential hazards. Jointline's experienced staff have the knowledge and expertise, along with state of the art equipment to implement surface markings which comply with strict regulations.

Our line marking complies with EASA, CAP168 and MADS where appropriate. This is a superior quality to conventional line marking material, combined with a unique grading of aggregates. This combination gives a high friction value where necessary, which brings it into line with the surrounding runway surfaces. By varying the size and amount of aggregates, friction values of between .65 and .8 using a grip tester can be achieved.

We specialise in single pack epoxy and chlorinated rubber materials that are used in conjunction with calzined flint to enhance the friction values of the markings. These are used in place of traditional line marking materials such as thermoplastic, as they present a much less risk in the prevention of foreign object debris (FOD).

We invest heavily in the most up-to-date equipment to ensure we are capable of applying large volumes of material within the restricted windows of opportunity when required. Key to the implementation of new layouts or changes on airfields, Jointline has a range of removal techniques that can be used that comply with necessary legislation.





Internal Line Marking

Jointline has the experience to deliver a first class service whilst minimising disruption.

Jointline has extensive experience in carrying out internal line marking in locations such as warehouses, factories and multi-storey car parks to name but a few. We realise that time is of the essence when carrying out these works. We will work with you to reduce downtime for the area in question so that it can return to service as quickly as possible, keeping loss of productivity and disruption to a minimum.

For Internal line marking we have a vast array of solutions:



RapidShield™ Instant Cure Internal Line Markings

We are an approved installer of the revolutionary RapidShield™ paint system, an instant dry line marking system. The applied resin film is cured with UV light so that it dries instantaneously. There is no time wasted waiting for it to cure or dry and the area on which it is applied can be returned to service as soon as the UV curing process is complete. This solution is ideal for busy warehouse, factory and distribution centre spaces where it is vital that downtime is minimised.

Advantages of RapidShield™

- Has a long lasting finish
- Is available in any colour
- Can be applied in working freezers down to -26°C
- Is safe for internal installation and for working on straight away – contains no solvents, isocyanates, odour or VOC's
- Reduced downtime due to speed of installation
- Offers excellent chemical resistance
- Reduces ongoing floor maintenance costs
- Up to five year guarantee



SolidLux Internal Instant UV Cure Coatings

Some places never get a rest. In areas where activity continues 24/7, installing floor markings is a challenge. After years of research, a ground-breaking innovation has now arrived: a rapid action floor coating that is fully UV cured and 100% load resistant, immediately after installation. SolidLux Instant Coating. Minimum disturbance, maximum time efficiency.

With minimal work area downtime, new line markings are fully load resistant both chemically and mechanically within minutes. The ultimate solution for production areas, distribution warehouses, cold storage and deep-freezing cells. With SolidLux, every floor can be treated rapidly to meet relevant safety and workplace standards with only a minimum of disturbance.

Advantages of SolidLux

- Significant time gains
- Evacuation or shut-down not necessary in most cases
- Minimum or no delays or loss of turnover
- Suitable for use on floors in cold storage
- Available in 7 vibrant colours
- Instantly resistant to mechanical and chemical impact
- Suitable for indoors and outdoors
- Anti-slip finish available
- No taint

Epoxy Resin Flooring Systems

Any of our painted line marking systems can be used for internal line marking. However, we can install and mark up epoxy resin-based flooring systems for the whole site. Epoxy resin flooring systems are hard wearing, easy to clean, have anti-static properties and are in some sectors, particularly the food industry, a must from a health & safety and hygiene point of view. Not only can we install your complete epoxy resin flooring system but are happy to be on hand to perform on-going maintenance.

Studding & Stud Removal

Jointline expertly delivers all your temporary and permanent studding requirements.

At Jointline we can install a wide range of road studs whether permanent cats-eye style studs (Halifax style or glass armour studs 180/360), surface bonded studs for temporary application such as for marking temporary carriageways in road works or for pedestrian delineation such as at road crossings.

Permanent Milled Road Stud Installation

Jointline have dedicated vehicles for effective and fast one pass stud installation. We install the Halifax style traditional milled road stud as well as the Glass Armour 180 or 360 stud. Both carry the S1 and R1 road trial classification of BS EN 1463.

Our vehicles will lower a milling machine to rout out the surface area for stud installation. The stud is dropped into the routed hole. The stud is then pitched into place. Traffic can use the road again once the pitch is sufficiently cured.

Surface Bonded Stud Installation

If your stud application is a temporary requirement for carrying out lane narrowing or installation of a contraflow system whilst larger works are carried out, Jointline can help you. We are experienced in the application of temporary surface bonded studs to ensure that traffic continues to move safely and efficiently.

Pedestrian Delineation Road Studs Installation

This type of stud is usually non-reflective and is used to mark out a pedestrian crossing area. Pedestrian crossing studs can be either stainless steel or aluminium. They can be available as a round or square top profile in aluminium or stainless steel. All crossing road studs are built to resist any twisting movements by having a shank for anchoring into the road surface.

Road Stud Removal

At Jointline we also carry out road stud removal. The existing road stud is jack hammered out of the road surface and the resulting hole is back filled with asphalt.



Overbanding

Jointline can protect your surfaces with our HAPAS approved materials.

Overbanding is a process used to seal cracks in a road or surface which may be:

- Spontaneous from wear and tear and require repair; or
- Where works have been carried out and the joint between the old surface and new surface need sealing

Overbanding these cracks is vital and serves to prevent damage and surface fretting from water, dirt or spillage penetration. Overbanding effectively seals the joint and overlaps the two sides of the join up to 200mm. This ensures that nothing can get into the crack and further degrade the surface.

Overbanding these cracks is vital and serves to prevent:

1. Using hot applied Bituminous material to seal and overband the crack
2. Using cold applied resins

The method chosen will depend on the project characteristics; the type of materials either side of the crack to be overbanded and how the surface is used i.e. car park versus airport fuelling area.

Jointline take health & safety very seriously and both of their overbanding methods are HAPAS approved, with high skid resistance values necessary to conform to requirements. This helps prevent any road users from slipping or skidding on the overbanded area particularly in wet conditions.



Joint Sealing

Where you have new or existing construction joints in road surfaces made from asphalt or concrete it is necessary to fill and seal them appropriately.

Joint Sealing not only allows the surface to tolerate expansion and contraction but also protects the joint from water damage, prevents the joint from failing due to other surface applications such as de-icer or from surface spillages.

Jointline provide joint sealing in a variety of ways:

Hot Applied N1 and N2 Sealants

Hot applied N1 and N2 sealants are used to maintain and repair joints in concrete or asphalt surfaces and are particularly used on highways, airfields and car parks. These hot applied sealants are fully BS EN14188-1 compliant. They have excellent expansion and contraction qualities and are effective at preventing damage resulting from water and dirt. These joint sealants can be quickly and simply applied at any time of year and cure quickly, helping to minimise disruption to traffic or users of the area to be treated.

Cold Applied Fuel Resistant Joint Sealants

If the area to be treated has a high likelihood of fuel spillages i.e. aircraft fuelling areas, oil terminals, garage forecourts, parking and cargo areas then we would apply a fuel resistant sealant using a cold application method. As with the N1 and N2 sealants the contraction and expansion properties are excellent and provide joint protection from water, dirt and more importantly kerosene, petrol and aircraft fuel.

As well as simply sealing joints Jointline have specialist saw cutting equipment to;

- Create joints in new/green concrete to enable the surface to deal with expansion and contraction
- Chase out or existing concrete cracks and sealing them or overbanding them
- Reform existing joints to effectively reapply sealant.



Grooving

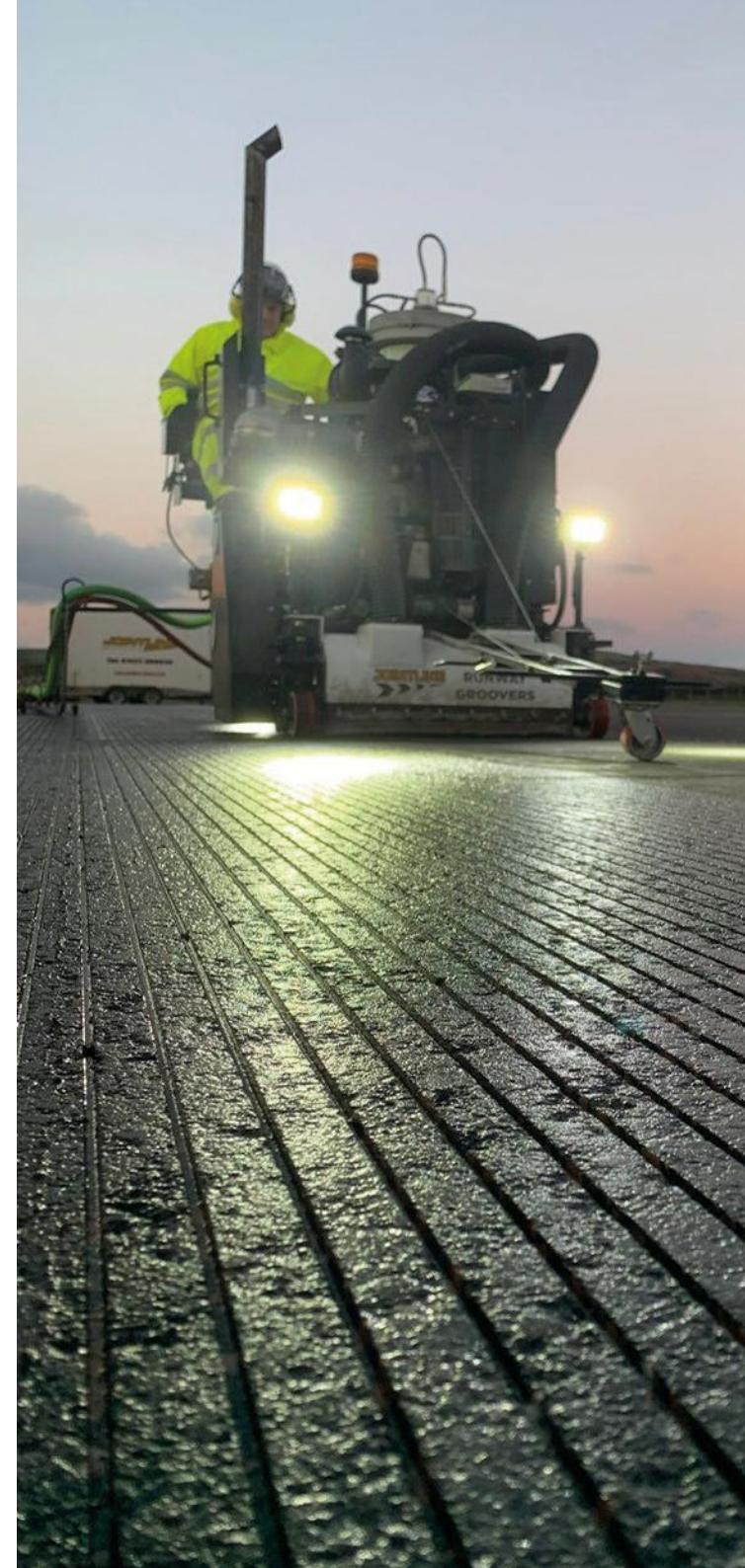
Grooving has become the proven, most cost effective way to increase the co-efficient of friction in the wet.

Highways grooving is used to increase the friction of a wet surface by removing surface water. Jointline have many years experience at the installation of anti-skid grooving to asphalt and concrete roads both in the UK and Worldwide.

Grooving involves saw cutting horizontal grooves into the surface of the carriageway. This helps any water on the surface dissipate more quickly increasing surface friction and reducing the chances of aquaplaning. Grooving has become the proven, most cost effective way to increase the co-efficient of friction in the wet thus improving the grip and braking distances of vehicles. Tests by NASA have proved that a grooved surface should finish with a co-efficient of friction which, in the wet, equates to 85% of that when it is dry.

For anti-skid grooving, we have an extensive selection of plant available including the latest "Cushion Cut" machine. This machine, in addition to the provision of grooves to the required centre, pitch and depth specification will automatically vacuum up the resultant spoil. Each job is unique and we will identify the correct depths of grooves and groove spacing to maximise the efficiency of water dissipation for your surface.

Only operatives with the requisite ability and experience are employed by Jointline Limited on these contracts and we always work to the safest standards.



Civils & Groundworks

Jointline delivers bespoke civil and maintenance solutions to our client base.

Jointline have the capability and experience to deliver bespoke civil engineering solutions to our client base. Within our separate Civil Engineering department, we deliver schemes both inhouse and in co-ordination with specialist approved sub-contractors to uphold the highest working standards.

The services we offer range from minor to major engineering works and we operate in role of either main contractor or specialist sub-contractor.

Our Civil Engineering department has a particular specialism in airfield construction which complements our successful line marking, joint sealing and airfield grooving services.

Our works include but are not limited to:

- Concrete slab construction
- Concrete patch repairs using cementitious or epoxy mortars
- Asphalt and pothole repairs using HAPAS approved materials
- Road reconstruction
- Repair of surface water damage
- Drainage
- Kerbing & Block Paving



Utility Reinstatement

Jointline operate nationally, by undertaking specialist surfacing reinstatement works for Utility contractors.

Utility Reinstatement contracts require our teams to source and install the correct materials to match the existing surfaces to carriageway, footway or domestic applications. Predominantly in city or centre public realm areas the work includes excavating the temporary surface and then reinstate the specialist products to match the existing surface.

Jointline work effectively to cause minimum disruption and progress smoothly and cost effectively.

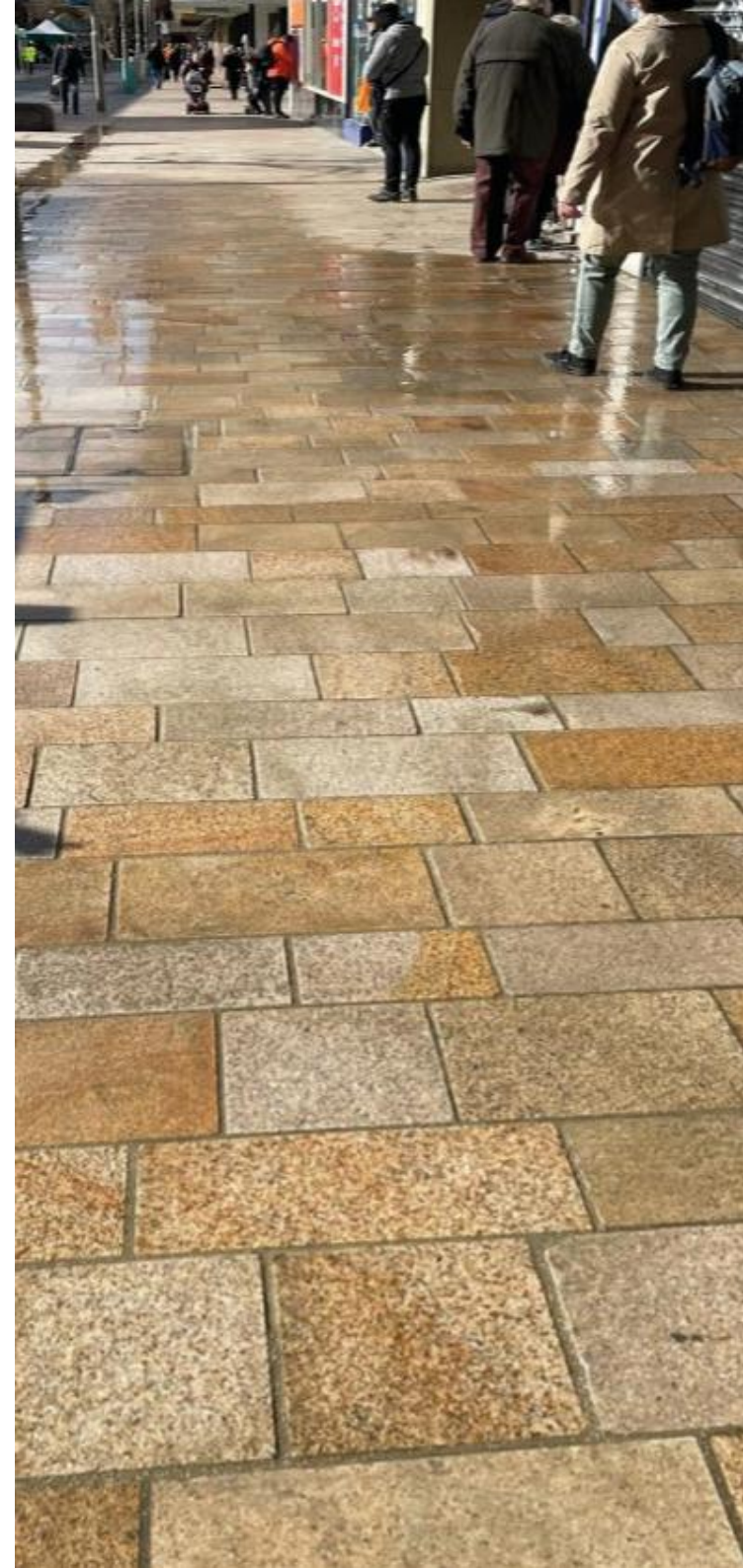
Due to the many constraints required, when working close to utility assets, specialist tools and bespoke teams are trained and used. Our competent and experienced site teams reinstate the required surfacing to the client's specification, reassuring them that Jointline are fully aware and capable of meeting their high site standards.

Benefits of using Jointline Specialist Surfacing Utility reinstatements

- Jointline source all specified materials or provide closest equivalent materials
- Cost effective
- Trained workforce
- Minimal disruption

Ideal for:

- City centre or public realm areas
- Commercial & Residential Driveways
- Footpaths
- Decorative Areas
- Cycle Lanes
- Playgrounds
- Driveways
- Private Estates



EXPERIENCED

INNOVATIVE

COLLABORATIVE

RESPONSIBLE

RELIABLE

SAFE

Mission Statement:

"We are committed to building long lasting, successful relationships with our stakeholders. Our mission is to become both an employer of choice and a supplier of choice, operating with integrity and putting people at the core of our business.

For us, it's personal."

Values:

We are **Experienced**

We are a trusted, well-established business built around highly skilled and talented people who excel at what they do. Our success is built on high levels of competency with strength and depth across every delivery stream resulting in a successful track record.

We're built on solid foundations.

We are **Innovative**

We foster agile ways of thinking to bring new ideas to life which shape the future of our industry. We provide customer focussed solutions that are unique to each scheme.

Our people learn, evolve and improve.

We are **Collaborative**

We improve customer experience by promoting an open working environment where knowledge and ideas are shared freely to create improved outcomes for all. We listen and learn together.

Teamwork makes us stronger.

We are **Responsible**

We care for our planet and seek to bring positive benefits to the communities that we serve. We value diversity, celebrate difference and offer an inclusive working environment. We invest heavily in formal training and apprenticeships.

We are ethical, honest and trustworthy.

We are **Reliable**

We do what we say we are going to do. We work hard to deliver schemes that are right first time and defect free.

You can depend on us to deliver.

We are **Safe**

We promote a safety led culture where people are empowered to check, challenge and change.

Safety starts with us!



Safely Marking
The Way Ahead
jointline.co.uk

Lincoln HQ

Airfield View, Camp Road
Witham St Hughs
Lincoln
LN6 9TW
Tel: 01522 868 636
Email: info@jointline.co.uk

Bradford Depot

Spartan Road
Low Moor
Bradford
BD12 0RY
Tel: 01274 736 504
Email: info@jointline.co.uk