

AVON

CAMPAIGN 25

there's
still
time!

LAST-MINUTE
GIFTS FOR
EVERYONE



get gifting!

It's not too late to
stuff the stockings,
find great gifts
and make merry,
all in the St. Nick
of time!



GIFTS
UNDER
\$5



LIMITED EDITION

Mini-Size

Holiday Hand Cream

Can't decide? Get them both!

Each, 1.7 fl. oz. reg. \$3

\$2.49 each

Skin So Soft

Pear and Freesia

217-200

Moisture Therapy

Soothing and Hydrating

Fragrance-free.

217-750

GIFTS
UNDER
\$10



**Daily Moments
Vegan Hand Cream
Holiday Set**
Includes three
of your favorites.

- **Midnight Street**
A sensual fragrance infused
with luscious fruit notes.
- **Sunset Rooftop**
A cool fragrance infused
with a touch of sweetness.
- **Morning Florist**
A floral fragrance featuring
fresh rose blooms.

Each, 1.0 fl. oz.
Comes in gift box.
217-817 reg. \$9.99
\$6.99
3-piece set

Enjoy special prices and offers with an
Avon account or Representative.

LIMITED EDITION

grab bag GOODIES



Bath Bomb Ornament

Hang 'em on your Christmas tree. Then run 'em under water in your tub and unwind with warm winter scents!
Each, 1.6 fl. oz. reg. \$10

\$8 each

Christmas Tree
(Brown Sugar)
150-411

Star
(Coconut Milk)
150-426

GIFTS
UNDER
\$10

The Face Shop

**x earp earp
Herb Day 365
Foaming Cleanser
Trio Trial Kit**

Mini daily cleansers
infused with naturally
derived herbal and fruit
extracts. Each, 2 fl. oz.
Boxed set includes:

- **Lemon & Grapefruit**
Freshen oily skin.
- **Acerola & Blueberry**
See a clearer
complexion.
- **Aloe & Green Tea**
Hydrate dry skin.

904-947 reg. \$11

\$8.40

3-piece kit



The Face Shop

**x earp earp
Best Sellers Set**

Three skin care beauties,
all in one cute kit.
Boxed set includes:

- **The Therapy
Vegan Blending Cream**
Lower layer of emulsified
cream with an upper layer
of oil-gel cream. .33 fl. oz.
- **Rice Water Bright
Foaming Cleanser**
Gently moisturizing foam
with rice extract. 1.01 fl. oz.
- **Real Nature
Rice Face Mask**
Brightening and softening
sheet mask with rice
extract. .7 oz. net wt.

918-060 reg. \$10

\$8

3-piece kit



LIMITED EDITION

holiday BESTIES



The Face Shop x earp earp Real Nature Mask Sheet Set

With naturally derived ingredients.
10 single-use sheet masks.

Each, .7 oz. net wt. Boxed set includes:

- **Honey mask** Hydrates for an extra glow.
- **Aloe and Potato masks**
Hydrate and soothe.
- **Lemon and Rice masks** Brighten.
- **Avocado and Green Tea masks** Hydrate.
- **Red Ginseng, Blueberry and Pomegranate masks** Help firm.

900-717 reg. \$11

\$8.80

10 masks

LIMITED EDITION

GIFTS
UNDER
\$10



Filigree Initial Necklace

Domed filigree initial set in silvertone.

Necklace, 16½" L with 3½" extender.

Pendant, 1" L.

reg. \$12.99

\$9.99 each



A

374-810



B

375-046



C

375-050



D

375-065



E

375-070



G

375-084



J

375-099



K

375-103



L

375-118



M

375-122



N

375-137



P

375-141



R

375-156



S

375-160



T

375-175



V

375-180



Amethyst/
Sivertone
523-866

Sodalite/
Goldtone
523-961

Tiger's Eye/
Sivertone
524-001

Tiger's Eye/
Sivertone
524-111

Sodalite/
Goldtone
524-069

Amethyst/
Sivertone
524-016

**Precious Energy
Collection**
With semi-precious
stones.

Hoop Earrings
Approx. 1 1/2" diam.
Pierced.
reg. \$12.99
\$9.99 each pair

Stretch Ring
One size fits most.
Stone, approx. 1/2" W.
reg. \$12.99
\$9.99 each

GIFTS
UNDER
\$15



winter DELIGHTS

LIMITED EDITION

Avon Senses Strawberry White Hot Chocolate Winter Bath Collection

An indulgent treat for your winter body care routine. Soften your skin all over while you enjoy the fresh and fruity scent of luscious strawberries with the silky sweetness of decadent white chocolate.

Body Lotion

Smooths and softens with moisture-rich shea butter and vitamin E. 8 fl. oz.

150-320 reg. \$17
\$10.99

Bubble Bath

Sweet and refreshing, delicious bubbles. 16.2 fl. oz.

150-373 reg. \$11
\$7.99

❖ Candle

1 wick. Soy-wax blend. 3" diam. x 3 1/2" H. Burn time, 40 hours. 7 oz. net wt.

150-392 reg. \$18
\$12.99

Hair & Body Mist

With aloe vera extract, leaves hair and skin feeling refreshed. 8 fl. oz.

150-369 reg. \$18
\$10.99



Enjoy special prices and offers with an Avon account or Representative.



**Holiday Rhinestone
Layered Stretch Ring**
With clear stone accents.
One size fits most.
Purple/Silvertone **224-944**
Red/Goldtone **224-671**
Blue/Silvertone **224-925**
reg. \$12.99
\$9.99 each



**Shimmer
Hoop Earrings**
Accented with
silver stones.
1/2" diam.
Pierced.
Red **375-213**
Black **375-194**
Clear **375-209**
reg. \$16.99
\$12.99
each pair

LIMITED EDITION

GIFTS
UNDER
\$15



January
217-874



February
217-912



March
217-927



April
218-153



May
218-172



June
218-206



July
218-244



August
218-388



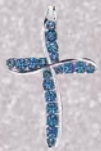
September
218-540



October
218-976



November
219-289



December
219-532

**Birthstone Cross
Necklace**

Colored glass
stones set in
silvertone.
16 $\frac{1}{2}$ " L with
3 $\frac{1}{2}$ " extender.
Lobster closure.
Cross, 1" L.
reg. \$12.99
\$9.99 each

LIMITED EDITION

GIFTS
UNDER
\$15

Heart/
Goldtone
524-126



Round (Cross)/
SILVERTONE
524-260



Star/
SILVERTONE
524-460



Oval (Star)/
SILVERTONE
524-217



Heart/
Goldtone
524-437



Cross/
SILVERTONE
524-441



Shaky Pendant Necklace
Pendant with colored stones and metal-plated accents. 16½" L with 3½" extender. Pendant, 1" L.
reg. \$16.99
\$12.99 each

Shaky Motif Pull-Cord Bracelet
With colored beads. One size fits most. Charms, ¼" to ½" L.
reg. \$16.99
\$12.99 each

Happy Holidays Collection

With colored enamel and clear pavé or colored stone accents.

Stretch Bracelet

With the look of Murano glass beads and metal-tone rondelles. One size fits most. Charm, approx. 3/4" L. reg. \$16.99 **\$12.99 each**



Wreath (Green Beads)/
Goldtone
221-122



Angel (Red Beads)/
Silvertone
221-380



Reindeer (Ivory Beads)/
Goldtone
221-141

Drop Earrings
1" L. Pierced.
reg. \$12.99
\$9.99 each pair



Wreath (Green)/
Goldtone
219-858



Angel (Green/Red)/
Silvertone
219-972



Reindeer (Red)/
Goldtone
219-915



Moon (Silvertone)/
Blue Stones
222-960



Heart (Silvertone)/
Crystal Stones
223-842



Circle (Goldtone)/
Crystal Stones
224-007

Sentimental Necklace and Earrings Set

Necklace, 16 1/2" L with 3 1/2" extender. Pendant, ranges from approx. 1/2" to 1" L. Pierced studs, range from approx. 1/4" to 1/2" L. reg. \$16.99 **\$12.99 each set**

necklace and earrings sets

Violet Jewel-Tone Collection

Amethyst-colored and clear stones set in silvertone.

Necklace and Earrings Set

16½" L with 3½" extender. Pierced drops, ¾" L.

522-248

reg. \$24.99

\$19.99 the set

Tennis Bracelet

7½" L with 1" extender.

522-271

reg. \$16.99

\$12.99

Hoop Earrings

1" diam. Pierced.

522-362

reg. \$12.99

\$9.99

necklace and earrings set



Faux-Gemstone 9-Piece Multi-Pack Collection

Nine-pair earrings pack with multicolored glass stones set in silvertone. Pierced studs, approx. ½".

522-381

reg. \$22.99

\$16.99 the pack

9-pair earrings pack



**LIMITED
EDITION**

**Precious Poinsettia
3-Piece Set**

Goldtone with red, green and clear stone accents. 16½" L with 3½" extender. Pendant, approx. 1" L. Pierced studs, approx. ½" L. Ring, approx. ½" W.

Sizes:

6 375-505

8 375-524

10 375-510

reg. \$22.99

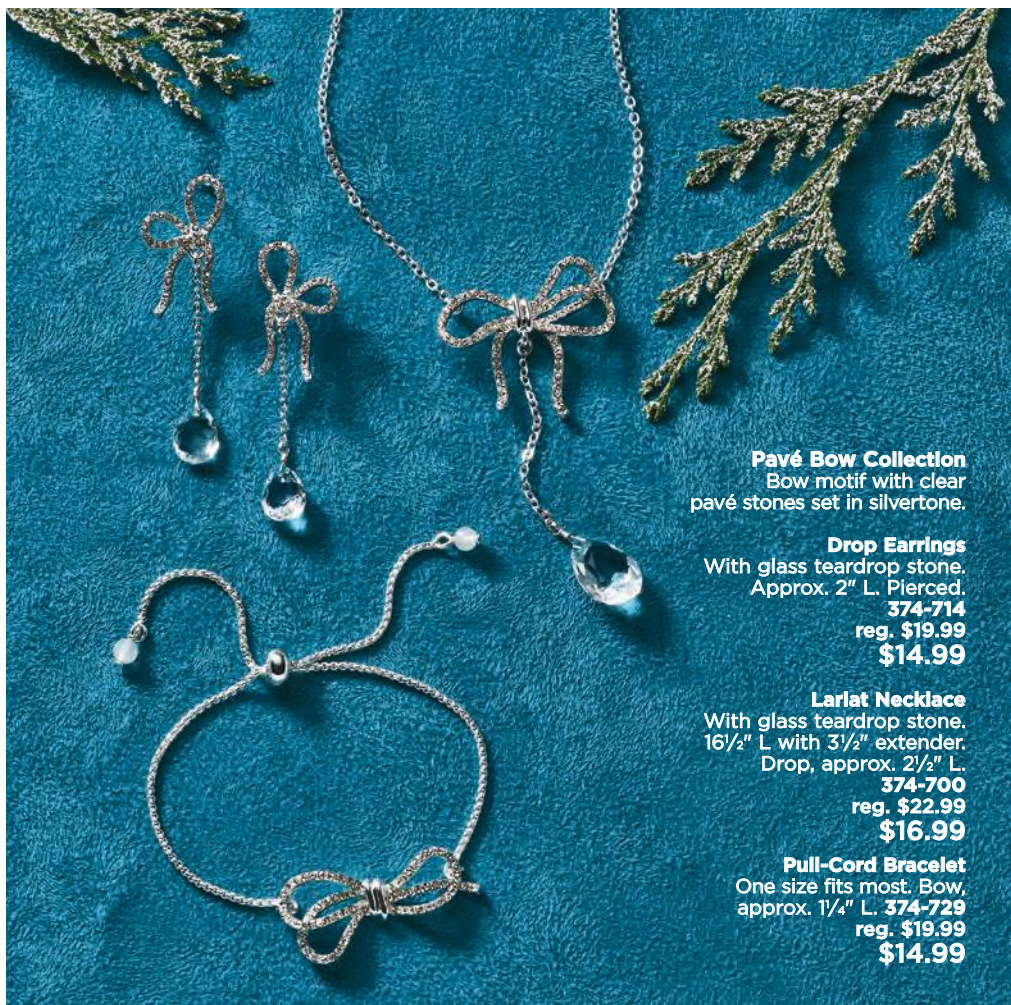
\$16.99

3-piece set



*necklace,
earrings and
ring set*

**GIFTS
UNDER
\$20**



Pavé Bow Collection
Bow motif with clear pavé stones set in silvertone.

Drop Earrings
With glass teardrop stone.
Approx. 2" L. Pierced.
374-714
reg. \$19.99
\$14.99

Lariat Necklace
With glass teardrop stone.
16½" L with 3½" extender.
Drop, approx. 2½" L.
374-700
reg. \$22.99
\$16.99

Pull-Cord Bracelet
One size fits most. Bow,
approx. 1¼" L. 374-729
reg. \$19.99
\$14.99



GIFTS
UNDER
\$20

wishing you the
WARM + FUZZIES

◆ **Rhinestone Faux-Fur Slipper**
Faux-fur slippers with rhinestone
detail. Man-made materials. Imported.
reg. \$20.99
\$15.99 each pair

Purple

S(5-6) **376-630** L(9-10) **376-918**
M(7-8) **376-812** XL(11-12) **376-980**

Pink

S(5-6) **377-000** L(9-10) **377-053**
M(7-8) **377-015** XL(11-12) **377-110**

Blue

S(5-6) **375-911** L(9-10) **375-945**
M(7-8) **375-926** XL(11-12) **375-950**



GIFTS
UNDER
\$25

❖ **Plaid Button-Detail Slipper**
Plaid upper with matching
button detail, black faux-fur
lining and trim. Man-made
materials. Imported.
reg. \$23.99
\$17.99 each pair

White/Black
S(5-6) 169-473
M(7-8) 169-860
L(9-10) 169-894
XL(11-12) 170-291

Green/Black
S(5-6) 168-022
M(7-8) 168-037
L(9-10) 168-151
XL(11-12) 168-166

Red/Black
S(5-6) 168-170
M(7-8) 168-792
L(9-10) 169-200
XL(11-12) 169-435

PLAID
tidings!

Enjoy special prices and offers with
an Avon account or Representative.



A. ❖ Foil-Printed Slipper Bootie

Foil leopard-print upper with faux-fur lining, matching bow and pom-pom detail. Man-made materials. Imported.

reg. \$32.99

\$24.99 each pair

Grey

S(5-6) **246-755**

M(7-8) **248-447**

L(9-10) **248-557**

XL(11-12) **248-739**

Tan

S(5-6) **246-630**

M(7-8) **246-650**

L(9-10) **246-664**

XL(11-12) **246-736**

B. ❖ Fair Isle Unisex Slipper

Blue-and-white-knit Fair Isle slip-on slipper with grey faux-sherpa lining. Man-made materials. Imported.

S(5-6) **248-800**

M(7-8) **249-348**

L(9-10) **251-196**

reg. \$22.99

\$16.99

XL(11-12) **251-330**

XXL(13-14) **255-942**

C. ❖ Classic Unisex Slipper

His or hers slip-on slippers with faux-sherpa lining. Man-made materials. Imported.

reg. \$22.99

\$16.99 each pair

Tan

S(5-6) **004-848**

M(7-8) **004-829**

L(9-10) **004-647**

XL(11-12) **004-484**

XXL(13-14) **004-465**

Black

S(5-6) **004-226**

M(7-8) **004-264**

L(9-10) **004-374**

XL(11-12) **004-412**

XXL(13-14) **004-450**

Grey

S(5-6) **151-331**

M(7-8) **151-350**

L(9-10) **151-403**

XL(11-12) **151-480**

XXL(13-14) **151-547**

UNISEX SIZE CHART		
	women	men
S	5-6	↘
M	7-8	5-6
L	9-10	7-8
XL	11-12	9-10
XXL	13-14	11-12



**Midnight Shimmer
Collection**

Dark blue glass beads.

Lariat Necklace

With glass sea beads.
25½" L with 3½" extender. Y-drop, 5" L.

523-149

reg. \$32.99

\$24.99

Coil Bracelet

With hematite glass
beads. One size fits most.

522-601

reg. \$19.99

\$14.99

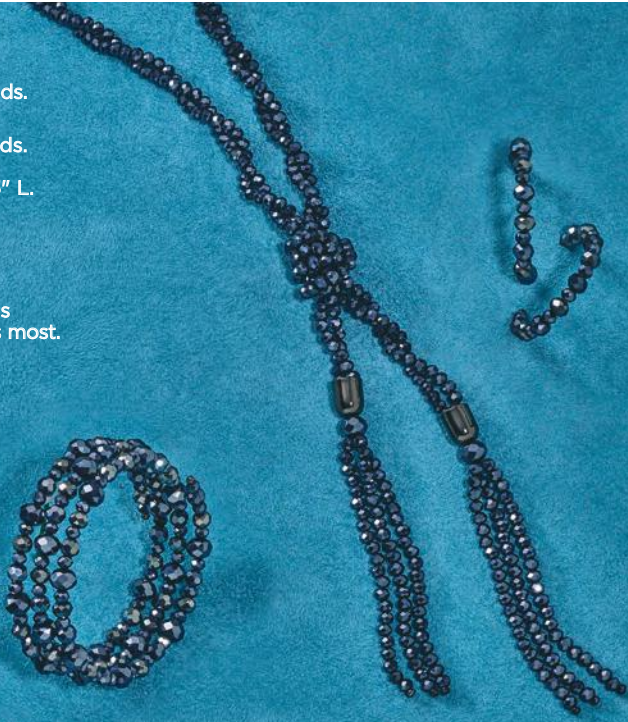
Hoop Earrings

1½" diam. Pierced.

523-479

reg. \$12.99

\$9.99



*necklace,
earrings and
bracelet set*



Exquisite Look of Emerald 3-Piece Set

Emerald-like glass stones set in the look
of rhodium-plated metal. 16½" L with
3½" extender. Pierced drops, 1¼" L.
Bracelet: one size fits most. **522-453**

reg. \$24.99

\$19.99 the set

LIMITED EDITION

Green Beaded Collection

Green faceted glass beads with hematite-colored glass beads and accents set in hematite-plated metal.

Layered Necklace

Four-row necklace. 16½" L with 3½" extender.

522-472
reg. \$24.99
\$19.99

3-Row Stretch Bracelet Set

Set of three. One size fits most.

522-597
reg. \$16.99
\$12.99
the set

Earrings

Pierced drops, 2½" L.

522-563
reg. \$12.99
\$9.99

GIFTS
UNDER
\$25

set of
3 bracelets



GIFTS
UNDER
\$30

**fmg Glimmer
Wish for a Kiss**

Thirty of our best-selling fmg Glimmer Satin Lipstick shades in take-to-every-party sample sizes housed in a cute keepsake metal tin. Comes in gift box. Each, .021 oz. net wt.

Includes shades:

Luna, Wild Rose, Rose Angel, Sierra Sunset, Poppy, Violet Night, Hibiscus, Firebolt, Thunderbird, Fog, Eclipse, Aster, Wild Cherry, Tulip, Constellation, Morning Glory, Plum Blossom, Desert Moon, Equinox and Twilight.

164-031 reg. \$100

\$29.99

31-piece set



nifty +



**VDL Expert Slim
Glow Lip Balm
Special Edition Set**

Sparkle through the holidays and beyond with supersoft lips and hands! Comes in gift box.

Includes:

- **VDL Expert Slim Glow Lip Balm** in Pink Sparkle, .08 oz. net wt.
- **VDL Lumilayer Perfumed Hand Cream** in rose and peony scent, 1.01 oz. net wt.

168-018 reg. \$28.99

\$19.99

2-piece set

**LIMITED
EDITION**

**fmg Expert Tips
Nail Art Tool Kit**

Merry your mani and get nails in tip-top shape with this handy kit!

Includes:

- Foam nail buffer block, 7" L.
- Nail buffer, 7" L.
- Two nail files, each, 7" L.
- Cuticle pusher, 5" L, stainless steel.
- Dual-ended marbling and dotting tool, 4" L, metal alloy.
- Cuticle cutter, stainless steel.
- Nail clipper, 2½" L, stainless steel.
- Storage box, 7½" L x 3½" H, plastic.

006-970 reg. \$30

\$16

9-piece set

*After you prep,
add some nail
color, sold on
page 84!*

gift

**fmg Eye Moment
Palette**

Multi-finish eyeshadow palette to create your best holiday eyes! Includes 10 sensational shades in satin, shimmer, glitter and matte finishes, mirror and brush applicator. Each, .03 oz. net wt.

reg. \$35
\$22 each

Enjoy special prices and offers with an Avon account or Representative.



GIFTS
UNDER
\$30

Men's Fragrance Essentials Gift Set

fresh aromatic

Elevate your fragrance experience
with our best-selling classics!
Comes in gift box.

Includes:

- **Black Suede Eau de Toilette**, Bergamot, soft leather and oakmoss. 3.4 fl. oz.
- **Wild Country Cologne**, Lavender, coriander seed and sandalwood. 3 fl. oz.
- **Wild Country Aftershave Splash**, 4 fl. oz.

217-195 reg. \$57

\$29.99

3-piece set



magnifiSCENTS!



Haiku Serenity Gift Set

fresh green floral

Delight in the serenity of a beautiful Japanese garden, blooming with Japanese yuzu, delicate muguet and blonde woods. Comes in gift box.

Includes:

- Haiku Eau de Parfum, 1.7 fl. oz.
- Haiku Hair & Body Mist, 3.25 fl. oz.
- Haiku Intense Travel Spray, .3 fl. oz.

217-161 reg. \$57

\$29.99

3-piece set


Enjoy special prices and offers with an Avon account or Representative.

GIFTS
UNDER
\$35


all is CALM...



◆ **Season's Blessings Cross Light-Up**

Back-lit nativity scene with an inscription from Luke 1:14: "And you will have joy and gladness; and many will rejoice at his birth." Can be hung up or placed on a flat surface. On/off switch. Takes two AAA batteries (not included). 10" L x 1½" W x 13" H. MDF wood, plastic. Imported. **284-020**
reg. \$44.99
\$34.99 

◆ **Holy Family Ornament Light-Up**

Mary, Joseph and baby Jesus light up the Christmas tree. On/off switch. Takes three LR44 button cell batteries (included). 3½" L x 3" W x 4½" H. Porcelain. Imported. **284-034**
reg. \$16.99
\$12.99 

all is BRIGHT



◆ **Peace on Earth Faux-Candle Light-Up**

Let there be peace on Earth! Flameless light flickers inside. On/off switch. Takes two AA batteries (not included). 4³/₄" L x 4³/₄" W x 6¹/₂" H. Porcelain, plastic. Imported. **284-049**

reg. \$32.99

\$24.99



◆ **Peace on Earth Angel Light-Up**

Hark! The herald angels sing! With a goldtone "Peace" charm, our angel shimmers with glowing stars on her gown. Flameless light flickers inside. On/off switch. Takes two LR44 button cell batteries (included). 5" L x 3¹/₄" W x 11" H. Porcelain, metal. Imported. **283-994**

reg. \$39.99

\$30.99



**GIFTS
UNDER
\$40**

belif in wonder holiday set

Celebrate explosive hydration!
One full-size fave plus two minis.

Limited-edition kit includes:

- The True Cream Moisturizing Bomb, 1.68 fl. oz.
- Aqua Bomb Hydrating Body Moisturizer, 1.01 fl. oz.
- Moisturizing Eye Bomb, .16 fl. oz.

Comes in festive holiday gift box.
208-562 reg. \$42

\$38

3-piece set



belif glow on the go holiday travel kit

Five must-have mini sizes.

Limited-edition kit includes:

- The True Cream Moisturizing Bomb, .33 fl. oz.
- The True Cream Aqua Bomb, .33 fl. oz.
- Moisturizing Eye Bomb, .16 fl. oz.
- Aqua Bomb Hydrating Toner, .67 fl. oz.
- Aqua Bomb Jelly Cleanser, 1.01 fl. oz.

Comes in festive holiday gift box.

210-736 reg. \$30

\$23

5-piece kit



Enjoy special prices and offers with an Avon account or Representative.

LIMITED EDITION



Isa Knox LXNEW Ultimate Day and Night Gift Set
With peony extract, plus niacinamide and panthenol. See younger skin blossom. Full-size day and night creams. Comes in gift box.

Includes:

- **Rejuvenating Day Cream**, 1.7 fl. oz.
 - **Rejuvenating Dual Night Cream Volume Cream/Firming Cream**, Each, .85 fl. oz.
- 213-716**
reg. \$100
\$39.99
2-piece set

GIVE beautifully

Farm Rx Skin De-Stressing Gift Set
Visibly improve wrinkles. Plus, massage with the relaxing wand to help ease facial tension. Comes in gift box.

Includes:

- **Farm Rx Bakuchiol Serum**, 1 fl. oz.
- **Farm Rx Bakuchiol Cream**, 3.04 fl. oz.
- **Holiday Set Exclusive! Acupressure Wand**
Lightly massage T-shaped end of wand upward to enhance absorption of serum and cream.

213-807
reg. \$106
\$35
3-piece set



GIFTS
\$40
& UNDER

**fmg Glimmer Pout Perfect
Mini Lipstick Gift Set**

Perfect your pout with
a trio of cult-fave
fmg Glimmer Satin mini
lipsticks. Comes in gift
box. Each, .04 oz. net wt.

Includes shades:

- Luna
- Plum Blossom

• **Holiday Set Exclusive!**

French Rose
164-490 reg. \$36

\$29.99

3-piece set



**fmg Mini Makeup
Essentials Kit**

Your must-have merry
makeup essentials all
ready to go for every
holiday event.

Includes:

- **Holiday Set Exclusive!**
**fmg Glimmer Duo
Eyeshadow Compact**,
.14 oz. total net wt.
- **fmg LOVE at 1st Lash
Mini Mascara** in
Blackest Black, .13 fl. oz.
- **fmg Glimmer Mini
Satin Lipstick** in
Wild Rose, .04 oz. net wt.
- **Be Blushed Cheek Color**
in Blushing Nude,
.14 oz. net wt.
- **Clear Green Pouch**,
Zippered. 4³/₄" L x
4³/₄" H x 4" D. PVC.
Imported.

163-460 reg. \$55

\$40

5-piece set

Enjoy special prices and offers with
an Avon account or Representative.

LIMITED EDITION

holiday open house



7 Days of Avon Beauty

Celebrate the season with seven makeup and skin care must-haves! Each door opens to a beautiful surprise! Paperboard, 7 1/8" W x 2" D x 12 7/8" H.

163-069 reg. \$66

\$29.99

7-piece set

Includes:

- Isa Knox LXNEW Ultimate Rejuvenating Day Cream Mini, .5 fl. oz.
- fmg LOVE at 1st Lash Mini Mascara in Blackest Black, .13 fl. oz.
- fmg Glimmer Lip Plumper, .3 fl. oz.
- Isa Knox LXNEW Ultimate Rejuvenating Serum Mini, .23 fl. oz.
- fmg Glimmer Diamonds Eyeliner in Black Ice, .01 oz. net wt.
- fmg Glimmer Lip Glaze in Flash, .3 fl. oz.
- Farm Rx Super Greens Refreshing Gel Cleanser Mini, 1 fl. oz.

GIFTS
UNDER
\$45

3-piece
set
includes
headband

Models are wearing 2-Pack Christmas Socks
with Scrunchie, sold on page 35.
Size chart on page 37.

❖ Snowflake Sleepshirt

Snowflake-print green Henley-style long-sleeve sleepshirt with front placket and buttons. Polyester/spandex. Center back length: 32" on M; 34" on 1X. Machine wash, line dry. Imported.

XS(0-2) 204-772	XL(16) 205-908
S(4-6) 205-180	1X(18W-20W) 205-912
M(8-10) 205-817	2X(22W-24W) 205-927
L(12-14) 205-893	3X(26W-28W) 207-619

reg. \$42.99
\$32.99

❖ Candy Cane Striped Pajama Set

Red and white striped long-sleeve round-neck top. Matching pull-on bottom with elastic waistband and side pockets. Includes matching headband. Top and bottom: cotton. Neckline trim: cotton/spandex. Center back length for top: 25½" on M; 27" on 1X. Bottom inseam: 30" for all sizes. Machine wash and dry. Imported.

XS(0-2) 202-909	L(12-14) 203-336	2X(22W-24W) 203-393
S(4-6) 203-135	XL(16) 203-340	3X(26W-28W) 204-768

M(8-10) **203-321** 1X(18W-20W) **203-355**
reg. \$56.99
\$44.99 the set

O COZY night



3-piece
set
includes
headband

LIMITED EDITION

◆ Christmas Tree Pajama Set

Multicolor Christmas tree print, navy blue long-sleeve round-neck top with side slits. Matching pull-on jogger bottom with rib cuff, elastic waistband and side pockets. Includes matching headband. Top and bottom: 100% cotton. Neckline trim and bottom rib cuff: cotton/spandex. Top: center back length: 25½" on M; 27½" on 1X. Bottom inseam: 29½" on all sizes. Machine wash and dry. Imported.

XS(0-2) **230-855**

S(4-6) **232-399**

M(8-10) **232-403**

L(12-14) **232-676**

XL(16) **232-680**

1X(18W-20W) **246-569**

2X(22W-24W) **246-607**

3X(26W-28W) **246-611**

reg. **\$56.99**

\$44.99 the set



two pairs
of socks
+ hair
scrunchie

◆ 2-Pack Christmas Socks with Scrunchie

Red and green Santa and black and red reindeer socks. Comes with red scrunchie with jingle bells. Fits shoe sizes 6-10. Socks: polyester/spandex; scrunchie: 100% polyester. Machine wash and dry (socks only). Imported.

194-177

reg. **\$12.99**

\$9.99 the set

◆ Whimsical Holiday Slipper

Red faux-sherpa upper with green embroidered Christmas tree and candy cane striped insole. Man-made materials. Imported.

S(5-6) **171-738**

M(7-8) **171-962**

L(9-10) **171-977**

XL(11-12) **171-981**

reg. **\$20.99**

\$15.99

Enjoy special prices
and offers with
an Avon account or
Representative.



GIFTS
UNDER
\$50

wrapped in
**HOLIDAY
STYLE**

A. ♦ Faux-Fur Trim Cape

Plaid cape with fringe and faux-fur collar. Hook-and-eye closure on front. Body and collar, 100% polyester. Dry clean only. Missy: 56" L x 53" W. Plus: 61" L x 58" W. Imported.

Missy **369-924**
Plus **369-981**
reg. **\$64.99**
\$49.99

B. ♦ Slim Faux-Suede Pant

Black slim-fitting faux-suede pants with elastic waist. Polyester/spandex. Inseam: 28 $\frac{1}{2}$ " on all sizes. Hand wash, line dry. Imported.

XS(0-2) **450-048**
S(4-6) **450-330**
M(8-10) **451-360**
L(12-14) **451-446**
XL(16) **451-450**
1X(18W-20W) **451-685**
2X(22W-24W) **451-833**
3X(26W-28W) **451-852**
reg. **\$49.99**
\$39.99

Model is wearing Sequin Ballet Flat, sold on page 37.

B

E

LIMITED EDITION

Model is wearing Sunburst Jewelry Collection, sold on page 123.

C. ❖ Lace-Sleeve Top

Red long-sleeve top with lace detail, round neck and cuffs. Body: polyester/spandex. Lace: polyester. Center back length: 24½" on M; 26" on 1X. Machine wash, line dry. Imported.

XS(0-2) **369-996**
 S(4-6) **370-044**
 M(8-10) **370-082**
 L(12-14) **370-188**
 XL(16) **370-211**
 1X(18W-20W) **370-230**
 2X(22W-24W) **370-245**
 3X(26W-28W) **370-264**
 reg. \$49.99
\$39.99

D. ❖ Long-Sleeve Sequin Pocket Tee

Black long-sleeve soft V-neck tee with sequin detail on pocket. Rayon/spandex/sequins. Center back length: 22½" on M; 25" on 1X. Machine wash, dry flat. Imported.

XS(0-2) **369-609**
 S(4-6) **369-670**
 M(8-10) **369-719**
 L(12-14) **369-742**
 XL(16) **369-776**
 1X(18W-20W) **369-780**
 2X(22W-24W) **369-848**
 3X(26W-28W) **369-871**
 reg. \$32.99
\$24.99



E. ❖ Sequin Ballet Flat

Silver sequin ballet flat with contrasting black toe cap and wavy cushion insole. Man-made materials. Half sizes, order size up. Imported.

6M **369-030** 9M **369-082**
 7M **369-044** 10M **369-097**
 8M **369-078** 11M **369-169**
 reg. \$37.99
\$28.99



APPAREL SIZE CHART			
SIZE	BUST	WAIST	HIP
XS 0/2	30.5"-32"	23.5"-25"	32.5"-34"
S 4/6	33.5"-35"	26.5"-28"	35.5"-37"
M 8/10	36.5"-38"	29.5"-31"	38.5"-40"
L 12/14	39.5"-41"	32.5"-34"	41.5"-43"
XL 16	43"-44"	35.5"-36.5"	44.5"-45.5"
1X 18W/20W	46.5"-48.5"	39"-41"	48"-50"
2X 22W/24W	50.5"-52.5"	43"-45"	52"-54"
3X 26W/28W	54.5"-56.5"	47"-49"	56"-58"

Enjoy special prices and offers with an Avon account or Representative.

LIMITED EDITION

❖ Toy Shop Tabletop Light-Up

Santa and the elves are busy making toys for all the good boys and girls! Center tree spins. Shop lights up. Plays eight holiday tunes (see page 39). Switch for lights, sound and movement, lights with movement or off. Takes three AA batteries (not included) with 4.5V 5000mA DC jack (adapter not included). 9 1/4" L x 5" W x 9 1/2" H. Polyresin, plastic. Imported.

283-937
reg. \$64.99
\$49.99



❖ Holiday Church Tabletop Light-Up

O come all ye faithful! Church and town square light up. Center Christmas tree spins. Plays eight holiday tunes (see page 39). Switch for lights, sound and movement, lights with movement or off. Takes three AA batteries (not included) with 4.5V 5000mA DC jack (adapter not included). 9 1/4" L x 5" W x 9 1/2" H. Polyresin, plastic. Imported. **281-767**

reg. \$64.99
\$49.99



GIFTS
UNDER
\$50



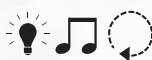
**PLAYS EIGHT
HOLIDAY TUNES:**
We Wish You a Merry Christmas
Hark! The Herald Angels Sing
Jingle Bells
Silent Night
Deck the Halls
Joy to the World
The First Noel
O Christmas Tree



❖ **Santa in Stocking Tabletop Light-Up**

Santa's door opens and our jolly friend pops out, ready to go! Stocking house, tree and street lamps light up. Switch for lights, sound and movement, lights with movement or off. Takes three AA batteries (not included) with 4.5V 5000mA DC jack (adapter not included). 9¹/₄" L x 5" W x 9¹/₂" H. Polyresin, plastic. Imported.

539-125
reg. \$64.99
\$49.99





Santa
013-519

Snowman
012-728

❖ **Sledding Christmas Shelf Sitter Light-Up**

Santa and his snowman buddy are ready for holiday fun! Cheeks light up on each character. On/off switch.

Takes two AA batteries (not included). Each, 10" L x 4 1/2" W x 11 1/2" H.

Polyester, metal. Imported.
reg. \$34.99

\$26.99 each



❖ **Over the Door Santa Greeter Light-Up**

Motion-sensor Santa greets guests with a twinkle in his cheeks. Hangs over the door. Cheeks light up. On/off switch. Takes three AA batteries (not included). 24" L x 20" W x 2" H.

Polyester. Imported.
282-209

reg. \$44.99

\$34.99



*Greets guests and says:
"Merry Christmas to all,
and to all a good night!"*



LIMITED EDITION

GIFTS
UNDER
\$50

A. ♦ Countdown to Christmas Plush
Our snowman is counting it down! Inflatable interior and base with snowman fabric overlay, detachable scarf and felt candy cane. Move the candy cane each day in December as it gets closer to Christmas. Some assembly required. Foot pump included. 15" L x 11" W x 28" H. Polyester, plastic. Imported.

014-606
reg. \$49.99
\$29.99

A

Stands 28" tall!

B

Stands 25" tall!



B. ♦ Sledding Christmas Greeter Light-Up
Let's go sledding! Sled lights up. Santa's hands can be secured to sled with hook and loop. On/off switch. Takes two AA batteries (not included). Sled: 7½" L x 2½" W x 19½" H. Santa: 10" L x 4" W x 25" H. Wood, polyester. Imported.

014-352
reg. \$58.99
\$49.99

◆ **Woodland Winter Village Light-Up**

Sculpted woodland scene with back-lit filigree design creates a cozy silhouette of our fave festive friends. On/off switch. Takes two AAA batteries (not included). 13³/₄" L x 2" W x 8³/₄" H. MDF wood. Imported. **283-980**

reg. \$49.99
\$39.99



GIFTS
UNDER
\$50



◆ **Christmas Tree Village Set**

Let's head to the village tree stand 'cause it's time to pick out the Christmas tree! Lights up. Takes three AA batteries. On/off switch. Tree stand: 5³/₄" L x 4" W x 7" H; pickup truck: 5¹/₄" L x 2¹/₂" W x 2³/₄" H; side trees: 3" L x 2" W x 2" H. Polyresin, plastic. Imported. **282-854**

reg. \$58.99

\$49.99 3-piece set



◆ **Bright Moments Bottle Brush Tree Set Light-Up**

Quintessential bottle brush Christmas trees with holiday lights. Each takes three AA batteries (not included). On/off switch.

Each, 3" diam. Small: 6" H; medium: 7³/₄" H; large: 10¹/₄" H. Plastic, metal.

Imported. **238-291**

reg. \$39.99

\$29.99 set of 3



◆ **Bright Moments Inspirational Pewter Ornament**

Continue the tradition! Embossed with the 2023 Avon Fine Collectibles stamp on back. Includes velvet keepsake pouch and easy-to-hang tassel.

2¹/₈" W x 2³/₄" L. Pewter, polyester. Imported. **234-573**

reg. \$20.99

\$15.99



◆ **Bright Moments Hurricane Glass Set Light-Up**

Houses and snowflakes light up. Each takes three AA batteries (not included). On/off switch.

Each, 3¹/₂" diam. Small: 4" H; large 8" H. Glass. Imported. **234-611**

reg. \$32.99

\$24.99 set of 2



◆ **Bright Moments Glass Tree Light-Up**

Santa is on the scene! Lights up and plays eight holiday tunes (see page 39). Takes three AA batteries (not included). Switch for lights only, lights and sound or off.

Glass, plastic, resin. 4" diam. x 10¹/₂" H. Imported. **235-584**

reg. \$39.99

\$29.99



❖ **Holiday Hills Ski Land Light-Up**

Christmas at the ski resort! Skiers shush down and head back up for more thrills. Lights up and plays eight holiday tunes (see page 39). Switch for lights, sound and movement, lights with movement or off. Takes three AA batteries (not included) with 4.5V 5000mA DC jack (adapter not included).
 7½" L x 7¼" W x 9¼" H.
 Polyresin, plastic.
 Imported. **278-559**
 reg. \$64.99
\$49.99



❖ **Santa's Midnight Sleigh Ride Light-Up**

Santa's ready to ride! The jolly ol' elf and his tiny reindeer dash up and down over our bottle brush forest. Trees and sleigh light up. Plays eight holiday tunes (see page 39). Switch for lights, sound and movement, lights with movement or off. Takes three AA batteries (not included) with 4.5V 5000mA DC jack (adapter not included). 8¾" L x 5" W x 12½" H. Polyresin, plastic.
 Imported.
278-525
 reg. \$64.99
\$49.99



LIMITED EDITION

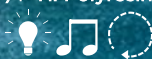
GIFTS
UNDER
\$55



◆ **Holiday Hills Swing Light-Up**

Swing into the holidays! Child swings back and forth as Santa looks on and skaters take a turn around the rink. Trees light up. Plays eight holiday tunes (see page 39). Switch for lights, sound and movement, lights with movement or off. Takes three AA batteries (not included). 7½" L x 7¼" W x 9¼" H. Polyresin, plastic. Imported.

281-733
reg. \$69.99
\$54.99



STUDIO
1886

GIFTS
UNDER
\$60

RSVP
Party!

❖ **Velvet
Long-Sleeve
Dress**

Black long-sleeve knee-length dress with scoop neck, smocked waist and zipper closure on back. Polyester/spandex. Center back length: 38" on M; 40" on 1X. Machine wash, dry flat. Imported

XS(0-2) **369-230**

S(4-6) **369-279**

M(8-10) **369-450**

L(12-14) **369-465**

XL(16) **369-484**

1X(18W-20W) **369-537**

2X(22W-24W) **369-556**

3X(26W-28W) **369-594**

reg. **\$66.99**

\$52.99

Model is wearing Green Beaded Layered Necklace, sold on page 23.
Size chart on page 37.



Model is wearing
Shimmer Hoop
Earrings, sold on
page 12, and Slim
Faux-Suede Pant,
sold on page 36.

❖ Crushed Velvet Pintuck Tunic

Grey long-sleeve V-neck tunic with button-front placket and pintuck detail. Polyester/spandex. Center back length: 29" on M; 30" on 1X. Machine wash, line dry. Imported.

XS(0-2) **370-298**

S(4-6) **370-302**

M(8-10) **370-389**

L(12-14) **370-465**

reg. \$53.99

\$42.99

XL(16) **370-499**

1X(18W-20W) **370-522**

2X(22W-24W) **370-541**

3X(26W-28W) **370-613**



❖ Faux-Leather Blazer

Black blazer with peak lapel and one button closure on front, long sleeves with button detail, slit pockets and back vent. Lined. Polyester/spandex with polyurethane coating. Polyester lining. Center back length: 28" on all sizes. Dry clean only. Imported.

XS(0-2) **445-960**

XL(16) **448-477**

S(4-6) **448-386**

1X(18W-20W) **448-921**

M(8-10) **448-405**

2X(22W-24W) **449-000**

L(12-14) **448-462**

3X(26W-28W) **449-014**

reg. \$74.99

\$59.99

Pink top, jeans and earrings are not available.

ANEW ULTIMATE / ANEW PLATINUM / ANEW POWER SERUM

A. Anew Ultimate

Multi-Performance Eye System

Visibly smooths crow's-feet and de-puffs under-eye bags. Cream, .5 oz. net wt. Elixir, .09 oz. net wt.

854-433 reg. \$42

\$27.99

B. Anew Ultimate Multi-Performance Day Cream Broad Spectrum SPF 25

You'll see wrinkles fade and youthful vibrance return. 1.7 oz. net wt.

763-307 reg. \$42

\$27.99

C. Anew Ultimate Night Repair Serum

With peptides, licorice, hyaluronic acid and niacinamide. Diminishes the appearance of fine lines and visibly improves skin tone and texture. Use PM before moisturizer.

1 fl. oz. 625-355 reg. \$45

\$26.99

D. Anew Ultimate Multi-Performance Night Cream

It works while you sleep to revive and recreate the look of youthful skin. 1.7 oz. net wt. 763-311 reg. \$42

\$27.99

E. Anew Ultimate Supreme Eye Balm

Infused with squalane, sunflower seed oil and antioxidant vitamin E. Moisturizing formula. Wear alone or under makeup. 0.1 oz. net wt.

625-340 reg. \$45

\$26.99



Anew Ultimate Supreme Dual Elixir

Follow with Advanced Performance Crème. Serum/Oil, .67 fl. oz. each.

588-421 reg. \$60

Anew Ultimate Supreme Advanced Performance Crème

With Black Pearl Extract.

See a dramatic difference in deep wrinkles and skin radiance. 1.7 oz. net wt.

014-735 reg. \$60

\$38.99 each



Anew Ultimate Regimen Set

Includes three full-size moisturizers plus one try-it-size serum.

• **Multi-Performance Day Cream Broad Spectrum SPF 25**
1.7 oz. net wt.

• **Multi-Performance Night Cream**
1.7 oz. net wt.

• **Multi-Performance Eye System**
Cream, .5 oz. net wt.
Elixir, .09 oz. net wt.

• **Anew Power Serum**
.24 fl. oz.

4-PIECE BOXED KIT
923-228 reg. \$128
\$54.99



Anew Platinum Age Delay Serum

With niacinamide (vitamin B3) and panthenol (pro-vitamin B5), plus peptides that help visibly boost elasticity and lift facial contours for a more youthful look. Use AM and PM before moisturizer. 1 fl. oz. **625-609** reg. \$45 **\$26.99**



NEW

Anew Platinum Sculpting Body Serum

With niacinamide, panthenol (pro-vitamin B5) and powerful peptides, effective anti-aging ingredients known to help boost moisture, leaving skin looking firmer, smoother and more youthful. 6.7 fl. oz. **506-249** reg. \$45 **\$26.99**



Anew Platinum Firm and Sculpt Cream for Neck and Chest

With Peptide Lifting Complex. For skin on your neck and chest, vulnerable to sagging. Use PM after cleansing. 1.7 oz. net wt. **763-584** reg. \$42 **\$27.99**



Anew Platinum Night Cream

Skin appears smoother overnight, resculpted over time. 1.7 oz. net wt. **753-439** reg. \$42 **\$27.99**



Anew Platinum Eye & Lip Cream

Visibly smooths and reshapes the area around eyes...and lips, too! Dual applicator. .5 oz. net wt. **328-072** reg. \$42 **\$27.99**



Anew Platinum Day Cream Broad Spectrum SPF 25

Fight gravity...or sun damage? With this cream, you can do both. 1.7 oz. net wt. **184-146** reg. \$42 **\$27.99**



Anew Platinum Regimen Set

Includes three full-size moisturizers plus one try-it-size serum.

- **Day Cream Broad Spectrum SPF 25** 1.7 oz. net wt.
- **Night Cream** 1.7 oz. net wt.
- **Eye & Lip Cream** .5 oz. net wt.
- **Anew Power Serum** .24 fl. oz.

4-PIECE BOXED KIT **923-467** reg. \$128 **\$54.99**



Anew Power Serum

Visibly improves wrinkles, radiance, firmness and texture. Use AM and PM after cleansing, as your treatment before moisturizing. 1 fl. oz. **417-187** reg. \$45 **\$26.99**



ISA KNOX LXNEW ULTIMATE Rejuvenating collection

Isa Knox LXNEW Ultimate Rejuvenating Multi-Corrector
Luxurious paeonol-infused serum with niacinamide and panthenol to help visibly address key signs of aging. Skin looks smoother and more youthful. Pat into areas prone to fine lines and wrinkles before moisturizer. 1.7 fl. oz. **496-595**
reg. \$50
\$34.99



Isa Knox LXNEW Ultimate Rejuvenating Serum
With paeonol and ceramides, visibly improves elasticity, radiance and skin texture, and reduces the appearance of wrinkles. 1.35 fl. oz. **756-624** reg. \$56
\$44.99



Isa Knox LXNEW Ultimate Rejuvenating Eye Serum
Infused with paeonol and niacinamide to help visibly reduce fine lines around the eye area and depuff under-eye bags. 1 fl. oz. **567-177**
reg. \$50
\$39.99



Isa Knox LXNEW Ultimate Rejuvenating Dual Night Cream
With paeonol and macadamia oil. Volume Cream: Rice bran extract helps visibly plump skin. Firming Cream: Helps boost collagen and elastin. Each, .85 fl. oz. **564-015**
reg. \$50
\$39.99



Isa Knox LXNEW Ultimate Rejuvenating Balm Stick
With peony extract, plus a firming complex featuring castor, moringa and argan oils. Apply to forehead, eyes and neck, or anywhere you want extra care. .24 fl. oz. **267-593**
reg. \$24
\$19.99



Innovative formulas with organic hibiscus extract help skin look lifted from every angle



Isa Knox LXNEW Platinum Sculpting Oil Serum

Hibiscus extract-infused serum, with rejuvenating peptides and antioxidants. Skin looks firmer and more lifted.

1.35 fl. oz.
318-720 reg. \$56
\$44.99

Isa Knox LXNEW Platinum Sculpting Day Cream

Infused with moisturizing hibiscus extract and soothing ceramide. Visibly tightens facial contours.

1.7 fl. oz.
318-845 reg. \$50
\$39.99

Isa Knox LXNEW Platinum Sculpting Night Cream

With firming hibiscus extract, ceramide, squalane and shea butter. Skin looks firmer, smoother and more defined.

1.7 fl. oz.
318-850 reg. \$50
\$39.99

Isa Knox LXNEW Platinum Sculpting Eye Cream

With hibiscus extract, panthenol and antioxidants. Leaves the delicate eye area looking firmer, brighter and more defined.

.84 fl. oz.
318-883 reg. \$50
\$39.99

Isa Knox LXNEW Platinum Sculpting Neck and Chest Cream

With hibiscus extract, ceramide, shea butter, panthenol and squalane to help vulnerable skin along the neck and chest appear firmer, smoother and lifted.

1.7 fl. oz.
548-069 reg. \$50
\$39.99



SKIN CARE COLLECTIONS save on all your faves

FARM RX GREEN GODDESS SET

Farm Rx
Green Goddess Cream
1.7 fl. oz.

Farm Rx Green Goddess
High Dose Serum
1 fl. oz.

2-PIECE SET
\$34.99

\$94 VALUE

961-190



HANDS & FACE SET

Isa Knox LXNEW Clean 2-in-1
Exfoliating Cleansing Balm
3.5 oz. net wt.

Silicone Glove
Protective Hand Cream
3.4 fl. oz.

Solutions
Anti-Aging Cream
1.7 fl. oz.

3-PIECE SET
\$24.99

\$50 VALUE

960-930



ULTIMATE SUPREME SET

Anew Ultimate
Supreme Dual Elixir
Serum/Oil, .67 fl. oz. each.

Anew Ultimate
Supreme Eye Balm
0.1 oz. net wt.

2-PIECE SET
\$26.99

\$105 VALUE

931-042



EXFOLIATE & FIRM SET

Isa Knox Anew Clinical Revitalize & Reveal Extra Strength Retexturizing Peel
30 pads.

Isa Knox Anew Clinical Collagen Booster Microneedling Polisher
1.7 fl. oz.

Solutions Nurtura Replenishing Cream
1.7 fl. oz.

3-PIECE SET
\$32.99
\$88 VALUE
923-486



FARM RX SET

Farm Rx Amazon Berry Boost Moisturizing & Firming Mask
3 fl. oz.

Farm Rx Pineapple Plus Instant Glow Toner
5 fl. oz.

Farm Rx Super Greens Refreshing Eye Cream
1 fl. oz.

3-PIECE SET
\$32.99
\$93 VALUE
924-076



THE FACE SHOP SET

Rice & Ceramide Trial Kit
Includes mini sizes: Toner, 1.15 fl. oz.; Emulsion, 1.15 fl. oz.; Cream, 0.34 fl. oz.

Rice & Ceramide Moisturizing Toner
5 fl. oz.

Rice Water Bright Foaming Cleanser
5 fl. oz.

Daily Moment Vegan Hand Cream—Sunset Rooftop
Pear, rose and patchouli.
1 fl. oz.

4-PIECE SET
\$12.99
\$29 VALUE
073-201



CLINICAL Line Eraser / Collagen Booster

Isa Knox Anew Clinical Line Eraser with Retinol Targeted Treatment

In just one week, the look of deep lines is smoothed and resurfaced. Use PM. .67 fl. oz. **925-159** reg. \$40 **\$23.99**

Isa Knox Anew Clinical Line Eraser with Retinol Treatment

Great for first-time retinol users. Use AM/PM. 1 oz. net wt. **763-330** reg. \$45 **\$27.99**



Isa Knox Anew Clinical Collagen Booster Eye Lift Pro Dual Eye System

With a peptide complex to help boost skin renewal. In one week, eye area looks lifted, firmer and tighter. Gel, .33 fl. oz. Cream, .33 fl. oz.

729-435 reg. \$40 **\$23.99**



Isa Knox Anew Clinical Line Eraser with Retinol [1.0%] Advanced Retinol Serum

Our highest dose of retinol. Dramatically reduces the appearance of fine lines, wrinkles and dark spots. 1 fl. oz. **390-751** reg. \$50 **\$39.99**



100% showed clinical improvement of fine lines and wrinkles in one week, with increased results over time.

Isa Knox Anew Clinical Collagen Booster Microneedling Polisher

At-home alternative to micro-dermabrasion and micro-needling procedures. Visibly diminishes pores, fine lines and wrinkles. Skin looks smoother and more radiant.

1.7 fl. oz. **798-592** reg. \$34 **\$19.99**



Isa Knox Anew Clinical Collagen Booster Firming Cream

With peptides that boost skin renewal to help to visibly firm skin and restore youthful bounce. Also infused with moisturizing and skin-plumping niacinamide and squalane. For optimal results, apply following Rejuvenating Serum Ampoules. Hygienic, airless pump. 1.7 fl. oz. **069-327** reg. \$45 **\$27.99**



Isa Knox Anew Clinical Collagen Booster Rejuvenating Serum Ampoules

Powerful peptide blend boosts skin renewal. 60 capsulated single-use ampoules. .008 fl. oz. each.

803-077 reg. \$62.50 **\$49.99**



Isa Knox Anew Clinical Revitalize & Reveal Extra Strength Retexturizing Peel
 Results similar to a 35% pro glycolic peel.* 30 fragrance-free pads. 2" diam.
729-420
 reg. \$40
\$23.99

*In 6 out of 8 attributes tested over a 7-week period.



Isa Knox Anew Clinical Revitalize & Reveal Resurfacing Expert Smoothing Fluid
 79% as effective as a pro micro-dermabrasion without the same irritation.
 1 fl. oz.
852-282
 reg. \$44
\$27.99



Isa Knox Anew Clinical Revitalize & Reveal Advanced Wrinkle Corrector
 In just two weeks, wrinkles appear reduced.
 1.7 fl. oz.
914-576
 reg. \$40
\$23.99



Isa Knox Anew Clinical Revitalize & Reveal Intensive Peel
 An intensive resurfacing peel similar to pro acid peels. With AHA and PHA.
 1 fl. oz.
780-025
 reg. \$45
\$27.99



Isa Knox Anew Clinical Revitalize & Reveal Resurfacing Lotion for Body
 Exfoliates with gentle yet effective AHA lactic acid. Moisturizes with shea butter.
 5 fl. oz. **390-785** reg. \$34
\$19.99

Skinvincible Deep Recovery Cream
 Lessens the look of age damage in weeks. Use PM.
 1 oz. net wt. **290-351**
 reg. \$40
\$23.99



Avon Solutions Nurtura Replenishing Cream
 Adds moisture to dry skin.
 1.7 fl. oz.
908-263
 reg. \$14
\$9.99



Avon Solutions Anti-Aging Cream
 Moisturizing formula works to visibly smooth the appearance of fine lines and wrinkles.
 1.7 fl. oz.
906-681 reg. \$14
\$9.99



Avon Solutions Dramatic Firming Cream
 Skin looks and feels smoother.
 1.7 fl. oz.
374-657
 reg. \$14
\$9.99



Avon Solutions Banishing Cream Skin Discoloration Improver
 Visibly improves skin tone.
 2.5 fl. oz. **463-374**
 reg. \$14
\$9.99



Avon Care Silicone Glove Protective Hand Cream
 Lasting protection from dryness.
 3.4 fl. oz.
366-887
 reg. \$6
\$2.69



ANEW VITAMIN C / ISA KNOX ANEW SOLAIRE

Anew Vitamin C Overnight Radiant Mask

Visibly improves texture and boosts radiance. Apply after cleansing, treating and moisturizing.

1.7 fl. oz.
157-086
reg. \$36
\$19.99



Anew Vitamin C Warming Peel

With vitamin C flakes and natural seeds, exfoliates with a warming sensation.

3.4 fl. oz.
936-425
reg. \$27
\$15.99



Anew Vitamin C Brightening Serum

Skin is visibly energized and brightened with the power of 10% pure vitamin C. 1 fl. oz.

522-066
reg. \$44
\$24.99



Anew Vitamin C Illuminating Priming Moisturizer

With natural citrus extracts. Wear alone or under makeup.

1.7 fl. oz. 868-508
reg. \$34
\$18.99

Anew Vitamin C Brightening Eye Cream

Visibly reduces dark circles. Leaves under-eye area looking brighter and more even-toned.

.5 fl. oz.
868-512 reg. \$34
\$18.99

Anew Vitamin C Antioxidant Lip Treatment

Nourishes lips with vitamins C and E.

.13 oz. net wt.
784-547
reg. \$14
\$7.99



Anew Vitamin C Illuminating Body Serum

Light-reflecting pigments leave skin looking luminous.

6.7 fl. oz. 157-071
reg. \$34
\$19.99



Anew Vitamin C Nourishing Body Butter

With hydrating shea butter and sodium PCA, enriched with niacinamide, helps restore radiance with vitamins C and E to defend against free radical damage.

Uplifting fruity-floral and citrus scent. 7.8 fl. oz.

**443-767 reg. \$32
\$17.99**

Anew Vitamin C Glow Body Scrub

Sugar-based formula with pineapple and papaya enzymes and coffee seed extract exfoliates dry, dull skin, while a blend of sunflower seed and sweet almond oils replenishes moisture. Refreshing citrus scent.

9 oz. net wt.

**443-752 reg. \$36
\$19.99**



**100%
mineral
sunscreen
with no
white cast!**

Isa Knox Anew Solaire Everyday Mineral Face Protection Cream Broad Spectrum SPF 50

Lightweight formula with zinc oxide. Suitable for sensitive skin. Water-resistant (40 minutes). 1.7 fl. oz.

**437-143
reg. \$29
\$22.99**



Isa Knox Anew Solaire Everyday Face Protection Lotion Broad Spectrum SPF 50

Creamy lotion formula. Wear alone or under makeup. 1.7 fl. oz.

**911-400
reg. \$29
\$22.99**



Isa Knox Anew Solaire Active Face & Body Protection Lotion Broad Spectrum SPF 50

Water-light formula glides on smoothly all over face and body. 2.7 fl. oz.

**154-948
reg. \$31
\$24.99**

ANEW HYDRA FUSION

Anew Hydra Fusion Nighttime Facial Treatment

Visibly plumps skin. Increases moisture by 3X. Relaxing rose scent. 1.7 oz. net wt. **139-429**
reg. \$34
\$18.99



Anew Hydra Fusion Gel Cream

Skin appears smoother, refreshed and plumped with lasting hydration. 1.7 oz. net wt. **266-893**
reg. \$34
\$18.99



Anew Hydra Fusion De-Puffing Eye Serum

With caffeine and a cooling ceramic tip. Instantly boosts hydration around the eye area by 3X. Eyes look and feel refreshed. .5 fl. oz. **137-737**
reg. \$34
\$18.99

Anew Hydra Fusion 1.5% Hyaluronic Acid Serum

With three different molecular sizes of HA that reach multiple layers of skin's surface to visibly plump skin. 1 fl. oz. **290-390**
reg. \$44
\$24.99



Anew Hydra Fusion Cleansing Micellar Water

Gently lifts dirt, oil and makeup while boosting hydration. No need to rinse off. 10.1 fl. oz. **139-380**
reg. \$14
\$8.99





normal to dry skin

Nourishing Cream Cleanser
With panthenol (vitamin B5), rosemary and soapwort extracts. Removes impurities and makeup while restoring moisture. 5 fl. oz.
717-990 reg. \$12
\$9.99

normal, dry and combination skin

Balancing Gel Cleanser
Gel to foam. With panthenol (vitamin B5). Amino acid-based ingredients derived from coconut help remove oil and impurities while rebalancing skin. 5 fl. oz.
718-010 reg. \$12
\$9.99

oily to normal skin

Soothing Whipped Oil Cleanser
Amino acid-based ingredients derived from coconut eliminate impurities and excess oil. With panthenol (vitamin B5) and aloe. 5 fl. oz.
718-025 reg. \$16
\$12.99

normal, dry, combination and oily skin

2-in-1 Exfoliating Cleansing Balm
Melts away makeup and impurities. With panthenol (vitamin B5) and bamboo stem powder. Spatula included. 3.5 oz. net wt.
718-006 reg. \$30
\$24.99

Cleansing Brush
Includes one brush head. Requires two AA batteries (not included).
679-266
reg. \$47
\$28.99



95% natural

99% natural

95% natural

Farm Rx Green Goddess Cream
100mg CBD. Helps soothe and visibly reduce redness. Use AM/PM after serum. For added radiance, follow with Facial Oil. 1.7 fl. oz. **338-027** reg. \$44 **\$32.99**

Farm Rx Green Goddess High Dose Serum
300mg CBD. Skin feels softer and soothed. Use AM/PM after cleansing, before CBD cream or facial oil to visibly boost results. 1 fl. oz. **338-031** reg. \$50 **\$37.99**

Farm Rx Green Goddess Facial Oil
100mg CBD. Suitable for sensitive skin. Rich in omega acids and vitamin E. Use AM/PM after cleansing and serum. Fragrance-free. 1 fl. oz. **934-733** reg. \$50 **\$32.99**

Farm Rx Bakuchiol Serum
Concentrated lightweight oil-textured formula penetrates skin's surface to target fine lines, wrinkles and dullness without irritation. 1 fl. oz. **247-417** reg. \$44 **\$32.99**



98% natural

Farm Rx Bakuchiol Eye Cream
Visibly reduces dark circles, fine lines and wrinkles without irritating the delicate eye area. 1 fl. oz. **565-834** reg. \$37 **\$27.99**



89% natural

Farm Rx Bakuchiol Cream
Moisturizing cream with bakuchiol, a plant-based alternative to retinol that you can use during the day. Visibly reduces wrinkles. Vegan. Hypoallergenic. Suitable for sensitive skin. 3.04 fl. oz. **004-044** reg. \$44 **\$32.99**



92% natural

THE FACE SHOP Jeju Aloe

Jeju Aloe Refreshing Face Mask

With soothing aloe, helps hydrate and nourish dry winter skin. Single-use mask. 1.01 fl. oz. **069-480**

reg. \$3
\$2.50



Jeju Aloe Fresh Soothing Foam Cleanser

Gentle gel-to-foam formula hydrates as it cleanses. With soothing aloe, moisturizing panthenol and other refreshing herbal extracts such as cica, camellia leaf, licorice root and rosemary. 5 fl. oz.

450-090
reg. \$11.99
\$9.99



Jeju Aloe Fresh Soothing Gel

With 95% aloe vera extract, instantly hydrates and soothes dry, sensitive skin. Infused with other soothing herbal extracts, like chamomile, lemon balm, rosemary and lavender. For face and body. 10.1 fl. oz.

984-304 reg. \$8
\$6.99



Jeju Aloe Fresh Ice Soothing Gel

3-in-1 gel with aloe vera extract. Use as moisturizer, soothing after-sun care or facial pack. Refrigerate for enhanced cooling. Apply to dry, sensitive, irritated areas of face and body. 10.1 fl. oz. **925-402**

reg. \$11
\$8.99



NEW

Jeju Aloe Body Wash

Helps moisturize dry skin while it cleanses, leaving skin feeling nourished. Light aloe scent. 13.5 fl. oz. **069-509**

reg. \$12

\$8.99

NEW

Jeju Aloe Hand and Body Lotion

With aloe vera extract, known to calm and soothe irritated skin and dry hands. Clinically proven to help dry skin feel nourished for 48 hours. 13.5 fl. oz. **069-441**

reg. \$12
\$8.99

FARM RX formulated with natural ingredients

NEW

Farm Rx Pineapple Plus Radiance Boosting Mask

With natural alpha hydroxy acid, plus an antioxidant-rich fruit complex to help skin look smoother and more radiant. 3 fl. oz. **456-266 reg. \$37 \$27.99**

Farm Rx Pineapple Plus Instant Glow Toner

Revitalizing toner helps visibly minimize pores. Use AM and PM after cleansing. 5 fl. oz. **027-382 reg. \$25 \$17.99**

Farm Rx Pineapple Plus Brightening Jelly Serum

Helps improve dull, dry skin and reduce the appearance of fine lines, wrinkles and pores. Skin looks radiant. 1 fl. oz. **027-440 reg. \$44 \$32.99**



96%
natural

87%
natural

89%
natural

Farm Rx Amazon Berry Boost Moisturizing & Firming Mask

Ultra-moisturizing face mask with acai berry, Brazil nut oil plus murumuru and cupuaçu butters. Helps skin look firmer, smoother and tighter. 3 fl. oz. **413-052 reg. \$37 \$27.99**



85%
natural

Farm Rx Amazon Berry Boost Smoothing & Firming Body Cream

With moisturizing and nourishing Brazil nut oil plus murumuru and cupuaçu butters. 5 fl. oz. **027-655 reg. \$25 \$17.99**



86%
natural

88%
natural98%
natural86%
natural87%
natural85%
natural
Farm Rx Super Greens Multivitamin Moisture Cream

Locks in essential nourishing moisture. Use daily after cleansing, serums and treatments. 3.04 fl. oz. **314-141** reg. \$37 **\$27.99**

Farm Rx Super Greens Cooling Gel

Lightweight moisturizer helps soothe and cool skin. As needed, apply a thicker layer after serum as a mask to hydrate overnight. 3.04 fl. oz. **354-227** reg. \$37 **\$27.99**

Farm Rx Super Greens Nourishing Cleansing Balm

Helps boost moisture barrier as it dissolves makeup and impurities. For normal, dry, combination, oily and sensitive skin types. 3.3 fl. oz. **516-944** reg. \$41 **\$30.99**

Farm Rx Super Greens Refreshing Gel Cleanser

With soothing aloe. Convenient pump. Eco-friendly packaging and glass bottle. Use AM/PM. 8.11 fl. oz. **913-049** reg. \$25 **\$17.99**

Farm Rx Super Greens Refreshing Gel Cleanser Refill*

Includes two refills. 16.9 fl. oz. **913-053** reg. \$37 **\$27.99**
*Not shown.

Farm Rx Super Greens Refreshing Eye Cream

With nourishing Super Greens formula, plus cucumber extract. Hydrates and helps skin feel soothed. Green tea helps visibly de-puff. 1 fl. oz. **412-826** reg. \$31 **\$22.99**

THE FACE SHOP Rice Water Bright

Rice Water Bright Light Facial Cleansing Oil

Removes every trace of makeup and gently cleanses impurities on skin. With jojoba oil and rice water extract, known to visibly brighten and moisturize skin. 5 fl. oz. **720-199** reg. \$14 **\$11.99**

Rice Water Bright Facial Cleansing Lotion

Rice bran oil helps brighten skin. Gently removes makeup and impurities. 6.7 fl. oz. **720-184** reg. \$12 **\$9.99**



Rice Water Bright Facial Massage Cream

With rice water, enriched with vitamins, ceramide and minerals. Use after cleansing 2-3 times a week. 6.7 fl. oz. **450-200** reg. \$24 **\$19**



Smaller Size! Rice Water Bright Foaming Cleanser

Same formula as the 10.1 fl. oz. Rice Water Bright Foaming Cleanser in a more convenient size for your medicine cabinet. 5 fl. oz. **478-479** reg. \$8 **\$6.49**



Rice Water Bright Mild Cleansing Water

Removes makeup and impurities with micelles, so no need to rinse off! Use with a cotton pad. 16.9 fl. oz. **288-360** reg. \$14.40 **\$12**



A. Rice Water Bright Foaming Cleanser

Light whipped foam leaves skin feeling cleansed and refreshed. With rice water and soapwort extract. Skin looks clear and bright. 10.1 fl. oz. **508-093** reg. \$13 **\$11**

B. Rice Water Bright Rice Bran Gentle Exfoliating Cleanser

Daily scrub with organic rice bran powder, rice bran oil and hydrated silica. 10.1 fl. oz. **376-865** reg. \$15.99 **\$12.99**

C. Rice Water Bright Cleansing Facial Wipes

Great on the go. With rice extract to moisturize while cleansing. Removes eye makeup. 50 sheets. **508-108** reg. \$11 **\$9**





Calendula Essential Moisture

Daily skin care for irritated and sensitive skin. With moisturizing calendula extract, a soothing herb complex, and the ultimate hydrator, hyaluronic acid.

A. Serum

A moisturizing and soothing serum that helps calm skin and enhance hydration. 1.35 fl. oz. **980-533** reg. \$13.50 **\$11.20**

B. Eye Cream

A lightweight, non-greasy, moisturizing and soothing eye cream. .67 fl. oz. **409-823** reg. \$12.50 **\$10.40**

C. Cream

A moisturizing cream that instantly hydrates while it gently helps soothe dry, itchy, irritated skin. 1.69 fl. oz. **465-400** reg. \$13.50 **\$11.20**

Rice & Ceramide Trial Kit

Moisturizing skin care set replenishes and refreshes your look. Try all three, or to use as a complete travel kit. Three-piece boxed mini sizes. Includes: Toner, 1.15 fl. oz. Emulsion, 1.15 fl. oz. Cream, 0.34 fl. oz. **543-617** reg. \$8.75 **\$7.20 the kit**



Rice & Ceramide Toner

Balancing. AM/PM, use after cleansing, before serum and moisturizer. 5 fl. oz. **124-142** reg. \$8.25 **\$6.80**



Rice & Ceramide Cream

Moisturizing. AM/PM, after cleansing, toning and serum. 1.69 fl. oz. **124-635** reg. \$9.25 **\$7.60**



Herb Day 365 Amino Acid Facial Foaming Cleanser

Vegan mild hypoallergenic cleanser with cica. Formulated for optimal pH balance. For a moisturized and comforted feeling without tightness, even after cleansing. Each, 5.7 fl. oz. reg. \$11.50
\$9.60 each

Peony

Helps visibly boost skin clarity, and helps hydrate and soothe skin.
546-229

Aloe

Helps moisturize and soothe dry, itchy skin.
544-393



Herb Day 365 Master Blending Facial Foaming Cleanser - Mung Bean & Mugwort

For trouble-prone skin. Formulated with naturally derived herbal and fruit extracts, and coconut-derived moisturizing ingredients. Free of synthetic colorants and parabens. 5.7 fl. oz. **135-093** reg. \$5.25
\$4.40



The Face Shop Rich Hand V Special Care Hand Mask

Coated masks contain nourishing lotion with sunflower seed oil and urea for instant moisturization. Two disposable masks, one for each hand. **541-724** reg. \$4
\$3



The Face Shop Smile Foot Mask

Disposable foot mask with naturally moisturizing urea, shea butter and collagen for baby-soft feet! Refreshes with peppermint oil. Contains two masks, one for each foot. **535-957** reg. \$4.79
\$3.99



Give your hands a moment of scented bliss



Daily Moment Vegan Hand Cream

Deeply moisturizing daily vegan hand cream with a long-lasting scent. Eco-friendly and vegan-certified. Each, 1.0 fl. oz. reg. \$4
\$3.29 each

1—Sunrise Bedroom
 Bergamot, lavender and cedarwood.
741-940

2—Morning Florist
 Lemon, Bulgarian rose and violet leaf.
741-955

3—Noon Park
 Grapefruit, hyacinth and iris.
754-636

4—Sunset Rooftop
 Pear, rose and patchouli.
757-931

5—Midnight Street
 Cassis, rose and amber.
762-334

6—Dawn Attic
 Orange blossom, pimento and vetiver.
762-353



**explosive hydration...
all over!**



BELIEVE IT!

3 steps in 1

balm → cream → oil

melts away makeup and impurities
while cleansing skin with hydration

aqua bomb makeup removing cleansing balm

*For dryness, dullness
& uneven texture*

Gently removes all traces of
makeup in one step. Smooth and
refreshing like sherbet. With lotus
flower and marshmallow root, herbs
known to help boost moisture and
radiance. No oily residue. For a
double cleanse, follow with
aqua bomb jelly cleanser. 3.3 fl. oz.

443-179 reg. \$46

\$38

BELIF believe in truth for your skin

belif believe in truth
aqua bomb
 hydrating body moisturizer
 With skin brightening niacinamide

Instantly hydrates with a soft, lightweight gel texture! **Yes** 0%+
 Leaves skin feeling smooth, not sticky? **Yes** 0%+
 Mineral oils **Yes** 0%+
 Synthetic fragrances **Yes** 0%+
 Synthetic organic dyes **Yes** 0%+
 Animal origin ingredients **Yes** 0%+
 Dermatologically tested

With 2 Napiers formula, hyaluronic acid, niacinamide
 *The numbers represent percentage of ingredients added

aqua bomb
 hydrating body moisturizer
 For dryness, dullness & uneven skin tone
 A favorite lightweight gel moisturizer with lady's mantle, an herb known for its antioxidant and soothing benefits—now for your body. Intense hydration for visibly firmer, clearer and brighter skin. Silky finish. For all skin types. 10.13 fl. oz.
443-040 reg. \$36 \$30

BELIEVE IT!
93%
 of people agreed skin appears smoother*

*Based on a clinical study.



the true cream aqua bomb
 For dryness, dullness & uneven texture
 Water-based refreshing gel-cream cools and hydrates. (Full size not available.)
 Try-it size, .84 fl. oz.
235-713 reg. \$24 \$22



the true cream moisturizing bomb
 For dryness, loss of elasticity & firmness
 Creamy, cushiony, whipped texture, envelops skin with intense moisture.
 Full size, 1.68 fl. oz.
948-463 reg. \$42 \$38
 Try-it size, .84 fl. oz. (not shown)
498-139 reg. \$24 \$22



the true cream aqua bomb aloe
 For redness, irritation & dryness
 Moisturizing gel-cream with aloe vera extract to instantly soothe skin, plus hydrating hyaluronic acid and soothing vitamin E.
 1.69 fl. oz.
788-284 reg. \$42 \$38



BELIEVE IT!

96%
of people said their skin felt hydrated after cleansing*

aqua bomb jelly cleanser
For dryness, dullness & uneven texture
Jelly to foam. Amino acids and glycerin-based cleansing agents gently cleanse.
5.41 fl. oz. **445-353 reg. \$35 \$30**

*Based on a clinical study.

aqua bomb hydrating toner
For an extra boost of hydration
Lightweight water-based toner, with hyaluronic acid, honeysuckle flower extract and baobab tree seed extract. Leaves skin looking soft and smooth with a healthy-looking glow. Use after cleansing, before serum and moisturizer.
6.75 fl. oz.
952-974 reg. \$36 \$30



moisturizing eye bomb
For dryness, loss of elasticity & firmness
Lightweight, refreshing eye cream cools on contact. Helps keep eye area looking firm, resilient and smooth.
.84 fl. oz. **445-478 reg. \$53 \$48**



aqua bomb sleeping mask
For dull, dry, fatigued skin
Unique jelly-pudding texture! Skin feels replenished overnight. Explosive hydration for smoother skin and a healthy glow.
2.53 oz. net wt.
514-717 reg. \$42 \$38



Mission Luxereve Cream
Perfect for dry skin. With luxurious oils and other moisturizing ingredients for a more youthful, sculpted appearance. Use AM/PM, after Mission Luxereve Serum. In AM, follow with sunscreen.
1.76 oz. net wt.
635-740 reg. \$350 \$280

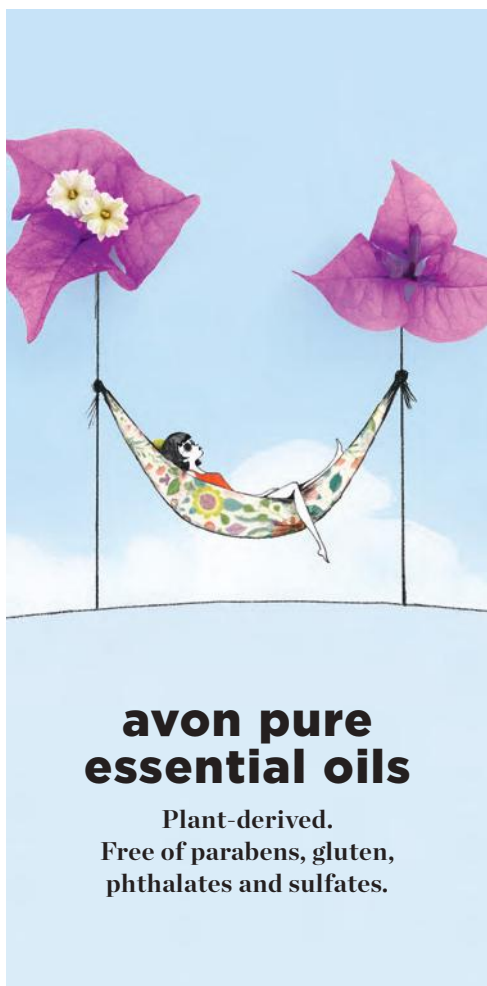


Mission Luxereve Lotion
Lightweight hydration ideal for normal skin. Improves the appearance of elasticity and firmness, and helps even tone and texture. Use AM/PM, after Serum. In AM, follow with sunscreen.
3.77 oz. net wt.
713-459 reg. \$95 \$80



Mission Luxereve Serum
Deluxe regenerating serum formulated to help boost skin elasticity and firmness. Use AM/PM, before moisturizing with Cream or Lotion.
1.01 fl. oz.
635-754 reg. \$225 \$180





avon pure essential oils

Plant-derived.
Free of parabens, gluten,
phthalates and sulfates.

Avon Pure Roll-On De-Stress Essential Oil

With lavender and peppermint. Apply directly on skin. Instantly transform your day. Contains sweet almond oil, a carrier oil. .34 fl. oz. **098-963** reg. \$24 **\$19**



Avon Pure Diffuser

LED light-up diffuser with three different settings releases a fine mist of essential oil and water into the air so that you can easily fill your space with the essence of the oils. 6½" H. USB connection. **915-424** reg. \$39 **\$32**



Avon Pure Essential Oil Case

Fits up to 48 essential oils and roll-ons. Man-made material with easy maintenance. Two padded stackable trays for added protection of glass bottles. Includes handle and all-around zipper. 8¾" L x 6⅞" W x 7½" H. **179-470** reg. \$51 **\$41**



Avon Pure Ceramic Aroma Diffuser

Premium ceramic. Whisper-quiet. Also functions as a humidifier. BPA-free plastic water reservoir. Auto shutdown on timer or when the water runs out. 6.8 fl. oz. capacity. Approx. 3¾" diam. x 6¾" H. **141-846** reg. \$71 **\$57**



re:tune

INNER BEAUTY*

Feel good on the inside
so you can look great
on the outside.

ANTI-AGING ANTIOXIDANTS

Neutralize free radicals
and defend skin from
the look of aging



re:tune Inner Beauty Youth Boost
With ingredients that help improve the clarity and hydration of skin while boosting antioxidant levels to help skin better defend itself from the look of aging.* 60 tablets.

456-137
reg. \$34
\$28



re:TUNE INNER BEAUTY feel good inside, look great outside

re:tune Inner Beauty Hair, Skin & Nail Health

Promotes a healthy response to skin stressors while helping build healthy hair, skin and nails.*

60 tablets.
396-908
 reg. \$42
\$33



re:tune Inner Beauty Metabolism Boost

A natural, plant-based energy and metabolism booster that helps you burn more calories.** 60 vegetarian capsules.

907-195
 reg. \$35
\$28



re:tune Inner Beauty Hydration

Supercharge your water for optimal hydration and more energy, and to boost skin health.

Contains electrolytes, B vitamins and antioxidants.* Berry flavor. 20 packets. **966-140**

reg. \$27
\$22



re:tune Inner Beauty Hunger Block

Helps reduce your food cravings for hours.*

60 vegetarian capsules.
906-920
 reg. \$31
\$25



*These statements have not been evaluated by the Food and Drug Administration. This product is not intended to diagnose, treat, cure or prevent any disease. **With reduced dietary intake and exercise.



**HELLO,
LIP LOVERS
SAVE UP
TO 30%!**

pages 75-79

**FIND YOUR
POWER COLOR**






















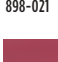


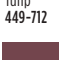



Enticing and inspiring spectrum of versatile and expressive shades.

fmg Glimmer Satin Lipstick
 Lightweight, smooth and creamy formula. Infused with antioxidant pomegranate extract. Buildable medium-to-full coverage. Soft satin finish. .10 oz. net wt. reg. \$11 **\$7.69**



Aurora
726-584

- | | | |
|--|---|--|
| 
Desert Moon
449-803 | 
Stellar
726-550 | 
Windstorm
883-845 |
| 
Cyclone
890-566 | 
Twilight
449-822 | 
Sierra Sunset
890-805 |
| 
Luna
895-170 | 
Equinox
449-818 | 
Honeyflower
726-531 |
| 
Aster
448-769 | 
Poppy
897-651 | 
Blaze
896-880 |
| 
Dahlia
726-350 | 
Constellation (Shimmer)
449-731 | 
Wild Cherry
449-708 |
| 
Plum Blossom
449-765 | 
Rose Angel
897-939 | 
Aurora
726-584 |
| 
Hibiscus
898-021 | 
Wildflower
898-040 | 
Eclipse
448-740 |
| 
Wildrose
898-533 | 
Tulip
449-712 | 
Celestial
895-352 |
| | 
Morning Glory
449-750 | 
Violet Night
898-548 |



Featured shade: fmg Cashmere Essence in Summer Berry.

Good Housekeeping Magazine 2022 Beauty Award Winner

fmg Cashmere Essence Lipcream

Plant-based Bio-Retinol, known for effective anti-aging properties without the harsh irritation, improves lip hydration and protection. With ginseng cell extract, antioxidant meadowfoam seed oil and vitamin E. High-shine finish.

.11 oz. net wt. **reg. \$22**
\$15.49



Cherry Rush 876-870 Cozy Rosy 879-626



Coral Charm 879-148 Honey Mandarin 876-024



Summer Berry 881-766 Plush Peony 873-977

Summer Berry 881-766



Lush color and shine.

Mauvelous 334-681

fmg Cashmere Rouge Lacquer

High-performance all-day wear. Dual-ended. Full-coverage color dries quickly without feathering. Moisturizing top coat locks color in place for a high-shine finish. Transfer-, smudge- and feather-proof.

.20 oz. total net wt. **reg. \$22**
\$15.49



Pinkfection 336-919 Ravishing Rose 334-749 Beautifully Bare 334-715



Berry Bliss 336-335 Mauvelous 334-681 Stunning Scarlet 334-825



GLIMMER LIP

Get your lips ready for prime time!

fmg Glimmer Lip Polish

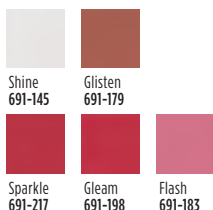
Sugar-based formula gently buffs away dry, flaky skin for softer, smoother lips. Helps polish and prepare lips for effortless color application. A blend of vitamin E, moisturizing squalane, and extracts of blueberry, strawberry and raspberry leaves lips feeling supple, pampered and kissably soft. .35 oz. net wt. **594-677 reg. \$14 \$8.99**



Drench lips in dimensional color and shine.

fmg Glimmer Lip Glaze

Non-sticky creamy formula gives hours of wear without feathering. With antioxidant vitamin E. Buildable sheer-to-medium coverage. .3 fl. oz. reg. \$11 **\$6.99**



Gleam 691-198



Keep your pout soft and kissable!

fmg Glimmer Lip Conditioner

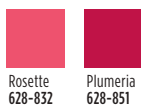
With mango seed butter, vitamin E, and jojoba and sunflower seed oils. Leaves dry, cracked lips feeling soft and smooth. .12 oz. net wt. **794-578 reg. \$12 \$8.29**



Brightens lips and cheeks.

fmg Glimmer Lip & Cheek Stain

Highly pigmented shades that wear all day. Lightweight gel formula blends and builds like a dream, providing the perfect pop of gorgeous luminous color. Brush tip applicator. Transfer-proof. Free from parabens and fragrance. Vegan. .19 fl. oz. reg. \$14 **\$9.99**



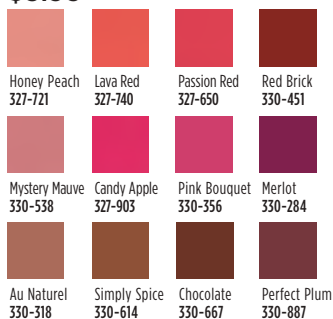
Plumeria 628-851



Prevents feathering.

fmg Glimmer Lipliner

Long-wearing. Retractable. Matte finish. .01 oz. net wt. reg. \$9 **\$3.99**



Passion Red 327-650

BUTTER ME UP



Luscious lip butter, high-shine
gloss and sheer color all in one!

fmg LOVE Lip Butter

Ultra-creamy formula, infused with nourishing cupuaçu seed butter, mango extract and apricot kernel and olive fruit oils, leaves lips feeling soft and kissable with intense moisture and shine. Non-sticky. Buildable coverage. Click pen applicator delivers right amount of color. Vanilla scented. Free from parabens, sulfates and phthalates. .09 oz. net wt. reg. \$17

\$12.99



Love Affair
063-242



Pucker Up
063-128



Secret Crush
063-147



Tease
063-132



Flirtatious
063-219



Rendezvous
063-166

Featured shade:
fmg LOVE Lip Butter in
Love Affair.

LIP

Deeply moisturizing lip oil.

TPSY Drunk Shiny Lip Oil

Instantly absorbed. A tint of color that matches every lip. No residue. No stickiness. Infused with jojoba, argan and castor oils. .13 oz. net wt. reg. \$15 **\$10.49**



Love Galore 495-197

My Boo 495-216

Get kiss-ready with the perfect partner.

TPSY Forever Lip Marker

Hydrating formula that stays on lips all day. Unique marker design allows for easy application. Kiss-proof. .08 fl. oz. reg. \$15 **\$10.49**



Crazy Rabbit 495-292

Orangey Red 495-311

Felt Pink 495-240

Blackberry Bite 495-364

Sour Candy 495-254

Vegan. Earth-friendly packaging.

A nude pout for every party.

fmg Glimmer Birthday Balm Lip Crayon

Butter-soft balm with a sheer color and shine. .1 oz. net wt. reg. \$12 **\$8.99**



Lovin' Life 698-867

Birthday Suit 375-706

Birthday Post 375-730

PYT 375-691

Surprise! 375-710

Fine Wine 375-725

A burst of vivid color with a featherlight feel and velvety soft matte finish.

Mattitude Liquid Lip

Weightless, non-drying formula that lasts for hours. Poppy seed oil and vitamin E nourish lips. Paraben-, sulfate- and phthalate-free. .13 fl. oz. reg. \$13 **\$8.99**



Relentless 750-607

Driven 750-664

Tenacious 750-683

Persistent 750-626

LASHES + BROWS

Lash-hugging heart-, flower- and cylinder-shaped lengthening fibers for voluminous, waterproof wear.

LOVE at 1st Lash Waterproof Mascara

Love Waterproof Complex™ with Lashrez, olive oil and vitamin E. Transfer-resistant. Clump-, flake- and smudge-proof. .3 fl. oz.

Waterproof Blackest Black

293-805

reg. \$15

\$12.99

cobra brush lifts & curls



Ultrafine felt tip sculpts, fills and shapes brows and enhances your look to perfection.

Espresso Martini
860-420

TPSY Snatched Brow & Freckle Marker

Long-wearing formula. Free from parabens and talc.

.01 oz. net wt. reg. \$15

\$12



Espresso Martini
860-420



Irish Cream
549-228



Spiked Macchiato
860-416



Volumizing and lengthening heart-shaped fibers + intense black pigments.

fmg LOVE at 1st Lash Mascara

Love Complex™ with lycopene, olive oil and vitamin E. Transfer-resistant. Clump-, flake- and smudge-proof. .3 fl. oz.

Blackest Black 698-670

reg. \$15

\$12.99



Long and healthy.

fmg Glimmer SuperExtend Nourishing Mascara

Enriched with vitamin E, argan and coconut oils. Won't clump, smudge or flake off. Each, .237 fl. oz.

Black 698-852

Brown 698-848

reg. \$11

\$8.99



Super volume.

fmg Glimmer SuperShock Volumizing Mascara

Instant high-gloss lushness. .338 fl. oz.

Black 698-829

reg. \$11

\$8.99



Waterproof volume.

fmg Glimmer Wash-Off Waterproof Mascara

Washes off easily with soap and water. .21 oz. net wt.

Black 723-107

reg. \$10

\$7.99



EYES + BROWS



MATTE Tigress
741-333



MATTE Icon
741-439



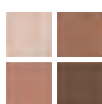
MATTE Bombshell
741-170



MATTE Calypso
741-261



MULTI Tempress
884-731



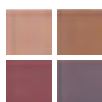
MULTI Idol
900-975



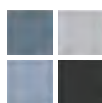
MULTI Maven
884-750



MULTI Siren
901-493



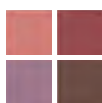
MULTI Mistress
883-902



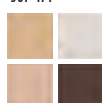
MULTI Vixen
901-474



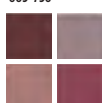
MULTI Minx
885-738



MULTI Darling
880-789



MULTI Goddess
901-330



MULTI Muse
880-459

For Multi Quad finishes, visit Avon.com.

Color-coordinated shades work together for expressive eye looks that last all day.

fmg Glimmer Eyeshadow Quad

Creamy soft powder formula hugs lids with rich color for all-day wear without the fallout. Free from parabens and fragrance. Available in Multi or All Matte. .21 oz. total net wt. **reg. \$15**

\$11.99



MATTE Tigress
741-333

Universal clear shade for a professional sculpted look.

fmg Colors of LOVE Hi-Brow Sculpting Brow Gel

Flexible, flake-proof formula. With moisturizing aloe and nourishing hyaluronic acid. Soft matte finish. Tapered micro-brush ensures precise application. Wear alone or over your favorite brow products. Free from parabens, phthalates and fragrance. .11 fl. oz.

Universal Love (Clear)

536-695

reg. \$17

\$12.99



Amp up brows with a sweep of tinted gel for a full, fluffy look.

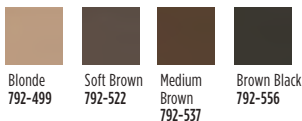
fmg Colors of LOVE Hi-Brow Tinted Brow Gel

Water-resistant, smudge- and flake-proof formula fills, grooms and shapes for 24-hour wear. With heart-shaped fibers, clay and vitamin E. Soft matte finish. Tapered micro-brush. .11 fl. oz. **\$17**

\$12.99



Medium Brown
792-537



Blonde
792-499

Soft Brown
792-522

Medium Brown
792-537

Brown Black
792-556

Vivid stay-all-day shimmery color.

**fmg Glimmershadow
Liquid Eyeshadow***

Long-wearing, no-smudge, no-crease, buildable formula with no messy fallout. Ultrafine pearl finish. Water-resistant. Paraben-, phthalate- and sulfate-free. .07 fl. oz. reg. \$12

\$8.99



MATTE SATEEN
Citrine
451-120



MATTE SATEEN
Pink Sapphire
448-591



MATTE SATEEN
Tiger's Eye
500-585



MATTE SATEEN
Jasper
500-566



SHIMMER
Pink Topaz
479-150



SHIMMER
Crystal Lilac
479-040



SHIMMER
Rose Gold
469-095



SHIMMER
Bronze Age
469-100



GLITTER
Peach Sapphire
469-057



GLITTER
Fool's Gold
469-076



GLITTER
Ultramarine
469-042

MATTE SATEEN
Citrine
451-120



GLIMMER LINERS



Soft sheen finish.
fmg Glimmer Cream Eyeliner*
 Long-wearing. Retractable.
 .01 oz. net wt. reg. \$9
\$3.99



Blackest Black 334-366
 Cosmic Brown 334-351
 Majestic Plum 334-313



Starry Night 334-347
 Emerald Green 334-332
 Saturn Grey 334-328

Starry Night 334-347



Unique cap with built-in sharpener!
fmg Glimmer Always On Point Eyeliner*
 Smudge- and waterproof. Creamy, smooth formula stays color-true all day. Free from parabens, sulfates and talc. .01 oz. net wt. reg. \$9
\$6.79



Black 016-389

Black 016-389
 Black Brown 016-446



Subtle sparkle.
fmg Glimmer Diamond Eyeliner*
 Long-wearing. Retractable.
 .01 oz. net wt. reg. \$9
\$3.99



Olive 331-940
 Sterling 331-960
 Black Ice 331-610



Brown Sugar 331-568
 Sugar Plum 331-625
 Purple Rain 332-071



Twilight Sparkle 331-553
 Teal Sparkle 331-606
 Smoky Diamond 331-280

Teal Sparkle 331-606



For natural-looking brows.
fmg Glimmer Brow Definer*
 Infused with nourishing castor oil, aiding in hair growth, and coconut oil. Smudge-, transfer-, sweat- and waterproof. Retractable. .01 oz. net wt. reg. \$9
\$3.99



Light Blonde 331-109
 Blonde 331-113
 Tawny 331-128

Light Brown 331-151
 Dark Brown 331-147
 Brunette 331-242

Brunette 331-242



Smudge- and sweatproof.
fmg Glimmer Waterproof Eyeliner*
 Long-wearing. Retractable.
 .01 oz. net wt. reg. \$9
\$3.99



Smoky Grey 332-162
 Blackest Night 332-143
 Midnight Blue 332-158



Blue Skies 334-237
 Raisin 332-200
 Brown Chocolate 332-124

Midnight Blue 332-158



Seafoam Green 334-241



Easy-glide, quick-dry precision felt-tip liner delivers rich color with long-lasting wear.
fmg Glimmer Liquid Eyeliner
 Matte finish. Removes with ease using soap and water or makeup remover. Transfer-, sweat- and waterproof. .037 fl. oz. **Blackest Black 354-380**
 reg. \$12
\$9.99

GLIMMER NAIL



Rose Citrine
843-057



Stolen Sapphire
842-998



Smoky Quartz
843-042

FLEX YOUR METAL

NEW

Mani of the moment:
matte metallics!

fmg Glimmer Matte-Ilic Crystals Nail Lacquer

Innovative nail lacquer combines vibrant color with a matte crystal finish. Long-wearing formula dries quickly and provides a protective shield against chipping.

Free from parabens, toluene, formaldehyde and camphor. .4 fl. oz.

reg. \$10
\$7.99

Rose Citrine
843-057

Max shine and vivid color for a salon-worthy manicure that lasts!

fmg Glimmer Nail Lacquer

Gel-like cushion texture. Nail-strengthening formula dries smooth and even for lasting wear that does not chip. No UV light needed. Free from parabens, talc, gluten, phthalates and fragrances.

.4 fl. oz.
reg. \$10
\$7.99



SATIN
Black Hole
Burgundy
740-648



SATIN
Night Sky
Berry
740-629



SATIN
Supernova
Red
740-633



SATIN
Lost Galaxy
Plum
740-614



SATIN
Full Moon
Flush
740-671



SATIN
Cool
Comet
740-667



SATIN
Lunar Tan
740-652



SATIN High
Magnitude
Mauve
740-781



METALLIC
Meteorite
Rose
740-800



METALLIC
Golden
Galaxy
740-796



SATIN
Night Sky
Berry
740-629

GLIMMER

Get mistake-free manis at home.

fmg Glimmer Nail Lacquer Eraser Pen

Glide over nail edges after applying nail lacquer for a clean and perfected manicure. .135 fl. oz. **704-443** reg. \$10 **\$7.49**



Creamy formula for lips and cheeks.

fmg Glimmer Be Blushed Cheek Color

Glides on smoothly without streaking for a natural flush of color. Buildable coverage. Soft dewy finish. With skin-nourishing vitamin E for antioxidant benefits. Free from parabens, phthalates and fragrance. .14 oz. net wt.

reg. \$14 **\$10.99**

Blushing Nude
022-911



Subtle yet eye-catching radiance.

fmg Glimmer Powder Illuminator

Finely milled powder creates a multi-dimensional luminous glow instantly. Lightweight buildable formula with vitamin E builds and blends effortlessly, providing a naturally radiant finish. Free from parabens, phthalates and fragrance.

.35 oz. net wt. reg. \$14 **\$9.99 each**

Rosé
463-628



Instant pop of color.

fmg Glimmer Powder Blush

Richly pigmented, silky pressed powder hugs cheeks. Weightless formula with ultrafine pearls for added dimension and vivid payoff blends effortlessly. Buildable coverage and soft matte finish. With skin-nourishing vitamin E for antioxidant benefits. Free from parabens, phthalates and fragrance.

.28 oz. net wt. reg. \$14 **\$9.99**

Petal Pink
618-209





CATHYCAT

Matte shadow stick colors and defines for all-day play.

fmg CathyCat Shadow Gaze Matte Color Stick

Comfortable, long-wearing formula provides the perfect amount of playtime for blending and building color intensity. Once the shade sets, it will not budge or smudge.

.0476 oz. net wt.

reg. \$17

\$13.99

Aubergine
786-960



CathyCat

Create eyes that captivate—shrouded in mystery and exuding seduction—purrfect for any occasion and all nine lives!



Buff 956-912 Rosewood 958-547



Taupe 958-126 Espresso 958-896



Azure 959-213 Mauve 958-331



Berry 958-619 Blush 958-638



Moss
786-540



Aubergine
786-960



PeriWink
787-053



Smokeshow
787-068

CATHYCAT

Create a sultry cat-eye look with this rich, long-wearing liquid liner.

fmg CathyCat Nine Lives Precision Liquid Eyeliner

Slim-tip brush delivers a precise line of waterproof and sweat-proof color that will not skip, tug or smudge. .068 fl. oz.

Blackest Black
800-829
 reg. \$18
\$14.99



Perfectly designed false lashes add length, dimension and volume.

fmg CathyCat LushLashes

Vegan. Includes one pair of false lashes and glue. Available in two flirty styles! reg. \$11
\$8.99 each



Soft & Sultry
 959-304

Fierce & Flared
 960-050

No-budge, water-resistant lashes, from dawn to dusk.

fmg CathyCat Play All Day Mascara

Long-wearing mascara coats each lash with rich pigments that will not budge or smudge for nine lives of perfect wear. Nourishing formula with a blend of conditioning coconut and argan oils and lash-supporting panthenol. Removes easily with soap and water. .28 oz. net wt.

Blackest Black
904-712
 reg. \$17
\$13.99



Lengthen, curl and captivate!

fmg CathyCat Curl & Flare Mascara

Long-lasting mascara applies evenly. Uniquely curved brush provides major lift, extraordinary curl and impressive length. Nourishing formula with a blend of conditioning coconut and argan oils and lash-supporting panthenol. .28 oz. net wt.

Blackest Black
901-269
 reg. \$17
\$13.99



Take your brow game to new heights!

fmg CathyCat High Arch Precision Brow Pencil

Long-wearing cream-to-powder pencil glides on smoothly, creating a well-defined look. Waterproof formula stays in place without budging or smudging for perfectly gorgeous brows. .01 oz. net wt. reg. \$15

\$11.99



Light Brown
 837-438

Ash Brown
 837-610



Brown
 837-442



Brown
 837-442





hello H_2 Glo!

Intensely hydrating
collection that
feels good and is
good for you!

GLOKOLOR Clean. Vegan. Hydration.

Rich serum
pampers lips.

**fmg GLOKOLOR
Lip Serum Pencil**
Infused with a burst
of peppermint oil, a
nourishing lip booster
complex and argan
oil. Lips feel smooth
and refreshed. Free
from parabens and
fragrance.
.06 oz. net wt.
**787-508 reg. \$20
\$16**



Ultrafine water-
based formula
awakens skin while
locking makeup
in place.

**fmg GLOKOLOR
Hybrid Face Mist**
Spritz it anytime,
anywhere for an
instant boost of
moisture to refresh
skin. With aloe vera,
agave and algae
extracts to help
soothe and nourish
the complexion.
Dermatologically
tested. Free from
parabens and sulfates.
2.7 fl. oz.
**787-599
reg. \$24
\$20**

























Prep step with
instant boost
of moisture!

**fmg GLOKOLOR
Hybrid Face Primer**
Light, breathable
formula softens
the appearance of
imperfections while
creating a flawless
canvas for makeup.
With aloe vera,
agave and algae
extracts to help
soothe and nourish
the complexion.
Dermatologically
tested. Free from
parabens and
sulfates.
1 fl. oz.
**787-637
reg. \$24
\$20**





CASHMERE FACE

		
Nougat (W) 126-107		
		
Marshmallow (N) 131-849	Macadamia (W) 136-525	Ganache (WO) 136-889
		
Cappuccino (N) 136-893	Chai (WO) 136-559	Toasty (N) 139-027
		
Praline (N) 141-406	Tiramisu (W) 137-278	Soufflé (N) 139-730
		
Muffin (W) 142-307	Gingerbread (C) 142-311	Pudding (N) 146-097
		
Amaretto (N) 146-188	Latte (W) 147-480	Brownie (WO) 147-461
		
Hazelnut (W) 147-495	Cognac (W) 147-681	Pecan (N) 149-699
		
Java (W) 149-722	Clove (N) 149-756	Truffle (C) 150-263

Featured shade:
24 Hour Foundation In Java.

Good Housekeeping Magazine
2021 Beauty Award Winner.

fmg Cashmere 24 Hour Foundation*
24 hours of comfortable, breathable wear.
Full, flexible coverage. Soft-focus matte finish.
Visibly blurs pores and fine lines for a smoother
complexion. With antioxidant botanical extracts.
Water-resistant. Vegan. 1 fl. oz. **reg. \$32**
\$24.50

*Available in Cool (C),
Neutral (N), Warm (W)
and Warm Olive (WO) undertones.

**Available in Cool (C), Neutral (N) and
Warm (W) undertones.

Enjoy special prices and
offers with an Avon account
or Representative.

CASHMERE FACE luxury in the shade of you

2-in-1 powder can be worn wet or dry.

fmg Cashmere Compact Powder Foundation**

Use as foundation or setting powder. Buildable medium-to-full coverage. Soft-focus matte finish. Amino-acid-coated pigments control shine. With collagen, lavender oil, and artichoke and chamomile extracts. Includes mirror compact and sponge. .40 oz. net wt. **reg. \$36**

\$30



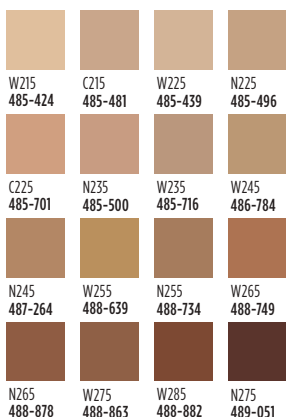
N150
111-658

Velvety soft-matte color.

fmg Cashmere Cushion Foundation**

Enriched with soothing calendula extract, moisturizing squalane and skin-brightening niacinamide. Helps to cover the look of imperfections. Light-to-medium coverage. Includes sponge puff applicator. Free from parabens, phthalates and fragrance. .42 oz. net wt. **reg. \$27**

\$24.50



W275
488-863

24 hours of comfortable, breathable wear.

fmg Cashmere 24 Hour Concealer*

Full coverage. Soft-focus matte finish. Visibly corrects dark circles and imperfections. With antioxidant botanical extracts. Water-resistant. .20 fl. oz.

reg. \$22

\$16



Toffee (W)
123-662



Packaging may vary.



FREE

fmg Oil Rewind Roller Ball, with any \$30 Cashmere face or eye purchase, pages 90-93. \$16 value.

Sold separately on page 96. Limited quantities.



CASHMERE EYE

Expertly curated 9-shade palettes to create an array of looks.

fmg Cashmere Eyeshadow Palette

Long-wearing creamy powder shadows in satin, matte and sparkling finishes. Crease- and smudge-proof. Talc-, paraben- and fragrance-free. .63 oz. total net wt. reg. \$40

\$33 each



Enchanted Eyes
401-440



Essential Eyes
404-745

Essential Eyes
404-745

CARESS OF CASHMERE



CASHMERE EYE

Intense, decadent black shades with dazzling jewel undertones for dramatic results.

fmg Cashmere 24 HR Cream Eyeliner

Comfortable kohl formula with 24-hour wear. Waterproof, matte finish. Smudge applicator to blend. Vegan. Paraben-, phthalate- and fragrance-free. .04 oz. net wt.

reg. \$18
\$15



Midnight
566-830

Nightfall
565-451

Rich black pigmented formula with extreme staying power.

fmg Cashmere Ultimate Volume Mascara

Leaves lashes feeling soft. Won't budge, smudge or transfer. Triple sphere brush hugs lashes. Removes easily. Vegan. .27 fl. oz.

Rich Black 153-736
reg. \$22
\$18



Fills in brows as it boosts color.

fmg Cashmere 24 Hour Brow Pomade

Smudge-proof, sweat-proof formula. Matte finish. Comes with dual-ended applicator with angled-tip brush and spoolie, 4 1/2" L. .14 oz. net wt.

reg. \$24
\$20

Light Brown
423-705



Blonde
423-710

Light Brown
423-705

Brown
423-356

Ash Brown
423-208

Dark Brown
423-227

Black Brown
423-212

Smother, brighter, flawless-looking eyes.

fmg Cashmere Under Eye Primer

Helps concealer wear all day. Infused with caffeine, green tea extract and vegan collagen to help diminish the appearance of dark circles, puffiness and fine lines. Free from parabens, phthalates and fragrance.

.317 oz. net wt.
010-429 reg. \$22
\$18



MATCH MAKEUP

Primes, protects and perfects.

fmg Match Prime Face Perfector

Flaw-blurring mattifying primer with SPF 20. Shine-defying microspheres visibly minimize pores and fine lines. Sheer breathable coverage suitable for all skin tones. Soft-focus matte finish. Free from oil and parabens.

1 fl. oz.
932-377
reg. \$14
\$11.49



Camouflage imperfections.

fmg Match Wand Correcting Stick

Minimizes skin concerns without creasing or caking! With shea butter and vitamin E. Free from parabens, phthalates and sulfates.

.21 oz. net wt. reg. \$16
\$12.99



Pistachio: neutralizes redness 726-770



Gelato: brightens dullness 726-785



Sherbet: neutralizes dark circles and marks 726-790

Pistachio 726-770



Conceal + Contour + Highlight

fmg Match Wand Foundation Stick

Instantly blurs and perfects skin. Helps to control oil and shine. Full and flexible all-over coverage in a demi-matte finish. Water-resistant. With shea butter and antioxidant vitamin E. Perfect for easy touch-ups. Free from parabens, sulfates and phthalates. Vegan.

.21 oz. net wt.
reg. \$16
\$12.99

Truffle (C) 596-297

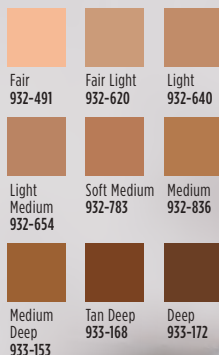


Instantly hydrates, blurs and evens tone!

fmg Match Filter Serum Tint Foundation

Infused with hyaluronic acid, vitamin E and a berry complex. Demi-matte powder finish. Buildable sheer-to-medium coverage. Suitable for all skin types. Includes sponge applicator. Free from talc, parabens and fragrance. .31 oz. net wt.

reg. \$18
\$14.99



Soft Medium
932-783



Mineral-infused loose powder and brush in one!

fmg Match Set Finishing Powder To-Go
Creates an invisible veil that controls shine and sets makeup. Lightweight formula diffuses light and visibly blurs pores and fine lines. Silky-soft matte finish never looks cakey. Free from talc, parabens and fragrance. .09 oz. net wt. **227-063**
reg. \$19
\$14.99



Creates an invisible veil that controls shine and sets makeup.

fmg Match Set Finishing Powder
Lightweight mineral-infused loose powder formula diffuses light and visibly blurs pores and fine lines. Silky-soft matte finish never looks cakey. Includes puff applicator. Free from talc, parabens and fragrance. .22 oz. net wt.
932-472
reg. \$17
\$13.99



Helps control oil and create a shine-free canvas.

fmg Match Blur Oil Control Primer Balm
Sheer mattifying formula. Special blurring powder microspheres help reduce the look of fine lines and pores. With nutmeg extract for antioxidant benefits. Includes sponge applicator. Free from talc and parabens. .59 oz. net wt.
932-381
reg. \$19
\$15.99



Blend of ultrafine rose quartz, ruby and tourmaline.

fmg Match Dust Finishing Powder
Weightless loose mineral powder diffuses light, visibly blurs pores and controls shine. Soft matte finish. Includes no-spill twist-and-lock sifter. Free from talc, oil and parabens. .21 oz. net wt. **reg. \$17**
\$13.99

Translucent Fair-Light
594-720

Translucent Medium-Deep
594-768



Translucent
Medium-Deep
594-768

Helps camouflage as it corrects and brightens.

fmg Match Corrector Brightening Perfector
Creamy veil of color helps blur flaws and reduce the appearance of fine lines, dark circles and blemishes. Buildable sheer-to-medium coverage with a demi-matte finish. Free from talc, parabens, sulfates, alcohol and fragrance. .11 oz. net wt.
reg. \$13
\$9.99

Fair-Light
932-396

Medium
932-415

Tan-Deep
932-434



Medium
932-415

MAKEUP MUST-HAVES

fmg Vanity Organizer

Makeup-theme print. Four compartments with two removable inside dividers, three outer pockets and lattice elastic straps. Folds for easy storage. 9½" L x 6" W x 5" H. Polyester. Imported.

022-816 reg. \$30
\$22.99



NEW

fmg Set & Fix Spray

Lightweight formula controls oil and creates a protective shield, keeping makeup smudge-proof and looking fresh all day. Conditions and smooths skin. Ultrafine mist dries quickly to an invisible finish. Non-greasy, non-sticky. Free from parabens, sulfates, phthalates and silicones. 1.7 fl. oz. **416-707**

reg. \$15
\$9.99



fmg Makeup Remover Wipes

Formulated with antioxidant vitamin E and an extract blend of aloe, chamomile, cucumber, marshmallow root and soothing oat. Leaves skin feeling soft and clean. Fragrance-free. Resealable pack of 24 wipes.

333-867 reg. \$9
\$7.49 each



fmg Oil Rewind Roller Ball

Reusable 360° rotating volcanic-stone roller instantly absorbs oil and grease. Control shine throughout the day without disturbing makeup. Ideal for touching up makeup on the go. Clean after each use. 1" W x 3" H. Plastic handle, protective cap. Imported. **508-294**

reg. \$16
\$12.99



fmg Moisturizing Eye Makeup Remover Lotion

Cleans, refreshes and moisturizes around the delicate eye area as it whisks away makeup.

2.5 fl. oz.
543-272
reg. \$8
\$5.99



fmg Express Makeup Brush Wash

Alcohol-free formula. Contains soothing aloe vera and green tea extract. Bristles are left conditioned with no leftover residue.

1 fl. oz. **141-368**
reg. \$12
\$9.99



fmg Waterproof Lip & Eye Makeup Remover

Dual-layer oil and water remover leaves skin fresh and clean. Mineral-, talc- and paraben-free. 3.7 fl. oz.

352-243
reg. \$12
\$7.99



DUAL-ENDED BRUSHES & MORE

fmg Kabuki Brush

With soft, angled bristles to effortlessly blend pressed or loose powder formulas. Retractable. Cap keeps the brush head safely covered when not in use. 3 3/4" L x 1" diam. **732-370** reg. \$16 **\$13.99**



fmg Flawless Complexion Sponge

With a full rounded bottom for all-over makeup application and blending, and a flat side for contouring, highlighting and concealing. 2 1/2" L x 1 1/2" W. 100% PU, latex-free. **140-160** reg. \$9 **\$6.99**



fmg Unready Makeup Remover Cloth

Dual-sided cloth makes makeup removal quick and easy. Gently exfoliates skin. 100% polyester. 9 7/8" sq. Machine wash and dry. Imported. **230-176** reg. \$12 **\$9.99**



fmg Eyeshadow Blending Brush

With a soft, domed crease brush on one end and a flattened, all-over eyeshadow brush on the other to apply and buff eyeshadow. 6" L. **933-320** reg. \$14 **\$10.99**



fmg Complexion Blending Brush

With a dense, rounded buffing foundation brush on one end and a precise, rounded concealer brush on the other to create a flawless canvas. 6 1/2" L. **933-210** reg. \$21 **\$16.99**



fmg Blush & Contour Brush

With a tapered, oval blush brush on one end and a fluffy, angled contour brush on the other to add color and dimension. 7 1/4" L. **933-259** reg. \$20 **\$15.99**



fmg Precision Eye Brush

With an angled eyeliner brush on one end and a pointed pencil brush on the other to highlight or add depth to eyes. 5 1/4" L. **933-187** reg. \$14 **\$10.99**



Far Away

A wanderlust for the exotic.



**Far Away
amber floral***Top:* Bergamot,
Freesia, Peach*Mid:* **Jasmine Absolute**,
Ylang-Ylang,
Orange Blossom*Dry:* Vanilla Absolute,
Musk, **Enticing Amber****Original
Eau de Parfum**
1.7 fl. oz.
685-712
reg. \$25
\$18.99**Intense
Eau de Parfum**
1.7 fl. oz.
931-332
reg. \$31
\$25.99**Shimmering
Body Mist**
3.25 fl. oz.
618-945
reg. \$20
\$15.99**Hair & Body Mist**
3.25 fl. oz.
572-536
reg. \$16
\$11.99**Intense Luxury
Body Crème**
5 fl. oz.
806-300
reg. \$23
\$18.99Enjoy special prices and offers with
an Avon account or Representative.

FAR AWAY a world full of infinite possibilities



**Far Away Bali
Eau de Parfum**
fruity floral

Sparkling grapefruit,
salted tuberose and
golden amber.
1.7 fl. oz.
451-389
reg. \$25
\$9.99

**LOWEST PRICE
THIS YEAR!**



**Far Away Infinity
Eau de Parfum**
fruity floral

Radiant bergamot,
jasmine sambac and
sensual sandalwood.
1.7 fl. oz.
318-481
reg. \$25
\$18.99



**Far Away Gold
Eau de Parfum**
amber floral

Ylang-ylang,
Indian jasmine and
Madagascar vanilla.
1.7 fl. oz.
685-727
reg. \$25
\$18.99



SET INCLUDES:

Far Away Infinity Eau de Parfum
fruity floral

Radiant bergamot, jasmine sambac and sensual sandalwood. 1.7 fl. oz.

Rare Pearls Eau de Parfum
soft floral

Shimmering magnolia, white pepper and creamy rosewood. 1.7 fl. oz.

2-PIECE SET

\$21.99

\$50 VALUE

960-319



SET INCLUDES:

Far Away Intense Eau de Parfum
amber floral

Freesia, sheer jasmine and enticing amber. 1.7 fl. oz.

Rare Amethyst Eau de Parfum
fruity floral

Passionate plum, blooming violet and rich sandalwood. 1.7 fl. oz.

2-PIECE SET

\$24.99

\$56 VALUE

960-251

Haiku

Haiku
fresh green floral

Top: **Japanese Yuzu**, Sweet Pomegranate, Summer Pear

Mid: **Muguet**, Freesia, Tuberose

Dry: **Blonde Woods**, Soft Musks, Vetiver

Original Eau de Parfum

1.7 fl. oz.
601-030
reg. \$25
\$18.99

Hair & Body Mist

3.25 fl. oz.
572-574
reg. \$16
\$11.99



HAIKU serene. divine. elegant.

Haiku Intense
Eau de Parfum
1.7 fl. oz.
097-110
reg. \$31
\$25.99

Intense Travel Spray
.3 fl. oz.
880-353
reg. \$16
\$12.99

Intense Luxury
Body Crème
5 fl. oz.
806-239
reg. \$23
\$18.99



Haiku Kyoto Flower
fresh green floral
Violet leaf, white peony
and soft cotton musk.

Original
Eau de Parfum
1.7 fl. oz.
144-352
reg. \$25
\$18.99

Intense
Eau de Parfum
1.7 fl. oz.
578-811
reg. \$31
\$25.99



Haiku Sacred Intense
Eau de Parfum
fruity floral
Discover a divine
blend of uplifting
tangerine, rose de mai
and earthy driftwood.
1.7 fl. oz.
579-750
reg. \$31
\$25.99



Haiku Reflection
Eau de Parfum
fresh green floral
Radiant water accord,
acacia blossom and
amber wood.
1.7 fl. oz.
617-657
reg. \$25
\$18.99



lush layers

your favorite scent, anytime, anywhere.



NEW

LIMITED EDITION

Intense Parfum Stick

Take your signature scent to go! Purse- and travel-friendly, no-mess solid formula delivers the same fragrance impression as an eau de parfum. Easy glide-on application.

Leaves no residue, melts quickly into skin. Each, .11 oz. net wt.

Haiku Intense 184-165

Rare Pearls Intense 184-184

Far Away Intense 184-170

reg. \$23

\$19.99 each

RARE a treasure beyond compare

Rare Pearls Eau de Parfum

soft floral

Shimmering magnolia,
white pepper and
creamy rosewood.

1.7 fl. oz.

761-615

reg. \$25

\$18.99



Rare Pearls Hair & Body Mist

3.25 fl. oz.

572-851

reg. \$16

\$11.99



Rare Amethyst Eau de Parfum

fruity floral

Passionate plum,
blooming violet and
rich sandalwood.

1.7 fl. oz.

933-062

reg. \$25

\$18.99





Imari Amor
woody floral

Top: Mandarin, Lychee,
Black Currant, Green Notes

Mid: Rose, Jasmine, Neroli,
Ylang-Ylang, **Precious Orris**

Dry: Sandalwood, Amber,
Patchouli, **Warm Musk**

Eau de Parfum
1.7 fl. oz.
762-573
reg. \$25
\$17.99



Imari
Eau de Toilette
amber floral

Italian bergamot,
tempting jasmine
and amber.

1.7 fl. oz.

871-496

reg. \$25

\$18.99



Imari Seduction
Eau de Toilette
amber floral

Wild berries,
hypnotic purple
orchid and patchouli.

1.7 fl. oz.

452-897

reg. \$25

\$18.99



RÊVE EN CUBE

Explore an enchanting space where fantasy blooms, romance is uninhibited and true beauty comes to life.

Rêve en Cube **Letter from the Stars** **Eau de Parfum** *fruity floral*

The stars beam brightly against the evening sky, guiding you to a dreamy world that shines with fragrant sparkling notes.

3.4 fl. oz. **809-238**

reg. \$70

\$59

Top: **Radlant Grapefruit,**
Lemon

Mid: **Sweet Gardenia,**
Jasmine

Dry: **Fuzzy Peach,**
Balsamic



Rêve en Cube **Misty Green Eau de Parfum** *soft floral*

Get lost in a field of dreams, where lush greenery is surrounded by uplifting notes, creating a serene escape.

3.4 fl. oz.

850-863

reg. \$70

\$59

Top: **Bergamot,**
Grapefruit,
Mandarin,
Lemon

Mid: **Neroli,**
Jasmine,
Lily of the Valley

Dry: **White Musk,**
Vetiver,
Amber Wood



**IT'S YOUR
LIFE
OWN IT**



NEW

Live Out Loud #4U
Eau de Parfum
fruity floral

Express yourself
with a fresh scent
brimming with
exuberance.

1.7 fl. oz. **735-968**
reg. \$40
\$26.49

Top: **Juicy
Mandarin,**
Pineapple,
Bergamot

Mid: Orange
Flower, **Peach
Blossom,**
Black Currant

Dry: **Sweet
Vanilla,** Musk,
Patchouli

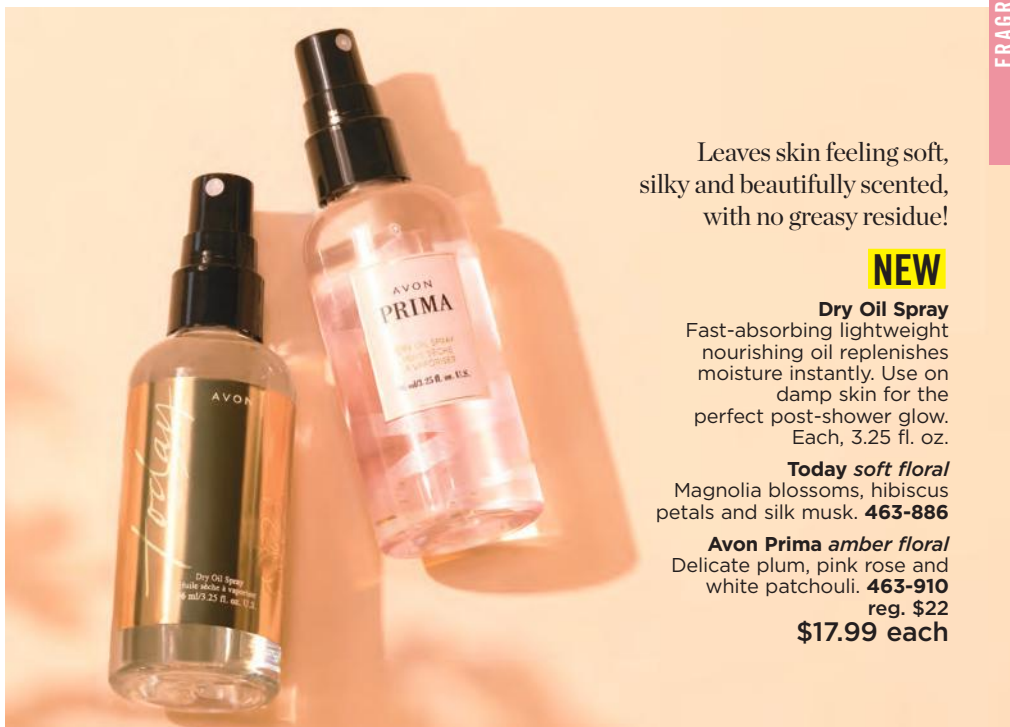


Live Out Loud
Eau de Parfum
fruity floral

A free-spirited
expression of sweet
wild strawberry,
sparkling mimosa
and comforting
fluffy vanilla.

1.7 fl. oz.
142-000
reg. \$40
\$26.49





Leaves skin feeling soft, silky and beautifully scented, with no greasy residue!

NEW

Dry Oil Spray

Fast-absorbing lightweight nourishing oil replenishes moisture instantly. Use on damp skin for the perfect post-shower glow. Each, 3.25 fl. oz.

Today soft floral

Magnolia blossoms, hibiscus petals and silk musk. **463-886**

Avon Prima amber floral

Delicate plum, pink rose and white patchouli. **463-910**
reg. \$22
\$17.99 each



**Today
Eau de Parfum
soft floral**

Magnolia blossoms, hibiscus petals and silk musk. 1.7 fl. oz. **325-920**
reg. \$30
\$26.49

L I V E

Y O U R

D R E A M

**Avon Classics
Dreamlife
soft floral**

A magical blend perfect
for every fantasy.

Top: **Mimosa Flower,**
Hyacinth, Apricot

Mid: **Aspirational Rose,**
Ylang-Ylang, Vanilla

Dry: Patchouli,
Sandalwood,

Glowing Amber

Cologne

1.7 fl. oz.

236-227

reg. \$18

\$13.49



ALWAYS
BEAUTIFUL

Timeless Cologne
soft floral
Cardamom, jasmine
and patchouli.
1.7 fl. oz.
037-930
reg. \$18
\$13.49



Topaze Cologne
soft floral
Jasmine, rose
and sheer musk.
1.7 fl. oz.
735-217
reg. \$18
\$13.49



Night Magic Cologne
woody floral
Neroli, jasmine
and musk.
1.7 fl. oz.
168-682
reg. \$18
\$13.49



Sweet Honesty Cologne
soft floral
Lily of the valley,
rose and cedarwood.
1.7 fl. oz.
037-595
reg. \$18
\$13.49



Odyssey Cologne
soft floral
Tuberose,
ylang-ylang and
warm oakmoss.
1.7 fl. oz.
168-697
reg. \$18
\$13.49



Free O₂
Eau de Toilette
fresh green floral
White peach tea,
airy honeysuckle
and musk.
1.7 fl. oz.
265-658
reg. \$18
\$13.49



Candid Cologne
amber floral
Bergamot,
tuberose and
patchouli.
1.7 fl. oz.
038-295
reg. \$18
\$13.49



LYRD Artisan Cannabis Oud Eau de Parfum
fresh citrus

Sweet pomelo, rich agarwood and earthy cannabis leaves. Contains .01% of CBD. This eau de parfum does not contain THC. 1.7 fl. oz. **254-544** reg. \$60 **\$49**



LYRD Oud Rose
woody floral
Spicy saffron, romantic rose and velvety patchouli.

Eau de Parfum
1.7 fl. oz.
954-412
reg. \$38
\$32

Travel Spray
.3 fl. oz.
448-496
reg. \$21
\$17



LYRD Sparkling Neroli Eau de Parfum
fresh citrus

Sparkling neroli, bergamot and warm musk. 1.7 fl. oz. **572-521** reg. \$36 **\$29**



LYRD Honeysuckle Blossom Eau de Parfum
soft floral

Apple blossom, honeysuckle nectar and vanilla orchid. 1.7 fl. oz. **616-282** reg. \$24 **\$20**



LYRD Peony Rosé Eau de Parfum
soft floral

Peony petals, pink currant and sheer musk. 1.7 fl. oz. **616-210** reg. \$24 **\$20**



Seasonal Delights

Get ready for the holidays!
Apple picking, tree trimming
and pumpkin pie, oh my!

LIMITED EDITION

◆ LYRD Candle

Three-wick, 11 oz. candle gives 30 hours of burn time. 4 1/4" diam. x 3 1/8" H. Glass jar, paper dust cover, soy blend wax. Assembled in USA.

reg. \$25

\$19.99 each



◆ LYRD Enchanted Snowy Forest Candle

Take a magical walk in a winter wonderland as fresh snow falls and the air fills with notes of frost, pine and smoked woods. **082-069**

◆ LYRD Let's Go Apple Picking! Candle

Family fun time at the apple orchard! Delight in the aroma of cozy cinnamon, juicy red apple and crisp cashmere woods. **082-001**

◆ LYRD Sticky Cinnamon Goodness Candle

Yummy! Fluffy warm dough, drizzled with sinfully sweet cinnamon sugar and ooey-goey golden caramel. **082-020**

◆ LYRD Save Room for Pumpkin Coconut Pie Candle

Did someone say pie? A warm fall hug with notes of shredded coconut, creamy pumpkin puree and sweet vanilla bean extract. **082-054**

MESMERIZE

Mesmerize Ultimate
Eau de Toilette
woody fougère
Black pepper,
zesty pomelo and
sensuous patchouli.
3.4 fl. oz. 897-030
reg. \$36
\$27.99



MESMERIZE

CAPTIVATE AT
A SINGLE GLANCE

Mesmerize Cologne
fresh aromatic
Bergamot, spicy
cardamom and amber.
3.4 fl. oz.
871-458
reg. \$25
\$18.99



Mesmerize Black
Eau de Toilette
woody fougère
Pepper, addictive nutmeg
and tonka bean.
3.4 fl. oz.
305-667
reg. \$25
\$18.99



Mesmerize Platinum
Ultimate Eau de Toilette
woody floral
Crisp pear, violet
and warm amber.
3.4 fl. oz.
179-633
reg. \$36
\$27.99





SET INCLUDES:

Perceive Cologne

fresh aromatic
Sparkling citrus, sage and cedarwood. 3.4 fl. oz.

Wild Country Hair & Body Wash

fresh aromatic
Lavender, coriander seed and sandalwood. 5 fl. oz.

Wild Country Bar Soap

3.17 oz. net wt.

3-PIECE SET \$17.99

\$39 VALUE

960-524



SET INCLUDES:

Mesmerize Cologne

fresh aromatic
Bergamot, spicy cardamom and amber. 3.4 fl. oz.

Wild Country Hair & Body Wash

fresh aromatic
Lavender, coriander seed and sandalwood. 5 fl. oz.

Wild Country Bar Soap

3.17 oz. net wt.

3-PIECE SET \$17.99

\$39 VALUE

862-280



SET INCLUDES:

Mesmerize Black Eau de Toilette

woody fougère
Pepper, addictive nutmeg and tonka bean. 3.4 fl. oz.

Black Suede Ultimate Body Wash

woody fougère
Lemon, rich lavender and tonka bean. 6.7 fl. oz.

Black Suede Bar Soap

fresh aromatic
Bergamot, soft leather and oak moss. 3.17 oz. net wt.

3-PIECE SET \$21.99

\$50 VALUE

862-146

BLACK SUEDE

BLACK SUEDE

EFFORTLESSLY COOL

Black Suede
fresh aromatic
Bergamot, soft leather
and oakmoss.

Eau de Toilette
3.4 fl. oz. **908-703**
reg. \$22
\$14.99

Hair & Body Wash
5 fl. oz. **366-318**
reg. \$8
\$3.99

**Aftershave
Conditioner**
3.4 fl. oz. **367-238**
reg. \$8
\$3.99



**Black Suede Ultimate
Eau de Toilette**
woody fougère
Lemon, rich lavender and
tonka bean. 3.4 fl. oz.
792-412 reg. \$27
\$22.99



**Black Suede Ultimate
Body Wash**
6.7 fl. oz.
003-875
reg. \$19
\$14.99



MEN'S FRAGRANCES

Studio 1886 Gentleman
woody fougère
Dynamic blend of
geranium, black pepper
and cedarwood.

Eau de Toilette
1.7 fl. oz. **708-750**
reg. \$50
\$39

Aftershave Lotion
6.7 fl. oz. **708-927**
reg. \$16
\$12.99



Studio 1886 Legendary
Eau de Parfum
woody fougère
Vibrant lemon, crisp
lavender, patchouli
and salted amber.
1.7 fl. oz.
269-820
reg. \$50
\$39



Wild Country Cologne
fresh aromatic
A rugged blend of
lavender, coriander
seed and sandalwood.
3 fl. oz.
086-466
reg. \$22
\$14.99



Wild Country
Hair & Body Wash
5 fl. oz. **364-080**
reg. \$8
\$3.99



Wild Country
Aftershave Splash
4 fl. oz.
366-432
reg. \$13
\$10.49



Perceive Cologne
fresh aromatic
Sparkling citrus, sage
and cedarwood.
3.4 fl. oz.
194-550
reg. \$25
\$18.99



Avon Exploration
Eau de Toilette
fresh aromatic
Fresh orange, silver
sage and vetiver.
2.5 fl. oz.
593-666
reg. \$25
\$18.99



SCENTED ESSENTIALS

Avon Classics Hand Cream

Moisturizing formula with jojoba seed oil and vitamin E. Leaves skin lightly scented. Each, 2.5 fl. oz.

Sweet Honesty 234-789

Night Magic 235-440

Timeless 234-740

reg. \$6

\$3.99 each



Body Scrub & Wash

Gentle formula cleanses as it removes rough, dry skin. Skin is refreshed, smooth and beautifully scented. Each, 6.7 fl. oz.

Haiku 143-208

Far Away 143-360

reg. \$12

\$9.99 each



Body Lotion

Luxurious moisturizer leaves skin soft and scented. Each, 6.7 fl. oz.

Far Away 082-881

Rare Pearls 082-915

Haiku 447-820

reg. \$10

\$6.99 each

Creamy softness

Perfumed Skin Softener
Moisturizing formula leaves skin soft and scented.

- Each, 5 fl. oz.
- Haiku **813-973**
- Candid **103-926**
- Far Away **812-981**
- Night Magic
- Evening Musk
- 104-129**
- Odyssey **104-171**
- Sweet Honesty
- 104-463**
- Timeless **104-478**
- Imari **818-239**
- reg. \$8
- \$3.99 each**



Deodorant Stick

All-day freshness in your favorite classic Avon scent! Nourishing formula glides on smoothly without leaving any residue. Lasting odor protection. Each, 1 oz. net wt.

- Wild Country 692-012**
- Black Suede 705-602**
- Rare Pearls 727-891**
- Haiku 727-906**
- reg. \$12
- \$9.99 each**

Gentology Herb & Aloe All-Over Wash
For face, hair and body. With aloe and natural herbal extracts.
10.1 fl. oz.
533-347
reg. \$16
\$13.65



Bar Soap
Moisturizes as it gently cleanses, leaving skin lightly fragranced.
Each, 3.17 oz. net wt.
Black Suede 495-565
Wild Country 495-570
reg. \$6
\$3.99 each



ETCHED IN BEAUTY

Delicate filigree details
and meaningful
motivations.

**Sparky Filigree
Collection**
Silvertone with
filigree accents.

**Long Layered
Necklace**
With glass silvertone
beads. 30" L with
3 1/2" extender.
224-959
reg. \$24.99
\$19.99

Chandeller Earrings
Approx. 2" L.
Pierced. 225-879
reg. \$12.99
\$9.99

Stretch Bracelet
One size fits most.
Charms, approx.
3/4" L. 226-363
reg. \$16.99
\$12.99



Strawberry Quartz/
Goldtone
960-027

Sodalite/
Silvertone
960-012

NEW

Healing Spirit Collection

With natural stones and faceted glass and metal bead accents.

Necklace Set

2-in-1 necklaces.
16½" L with
3½" extender.

reg. \$19.99
\$14.99 each set

Bracelet

One size fits most.

reg. \$16.99
\$12.99 each

necklace sets



Strawberry Quartz/
Goldtone
960-156

Sodalite/
Silvertone
960-031

Love
Empathy
Balance

Clarity
Intuition
Wisdom

IRIDESCENT ELEGANCE

Mother-of-pearl hues and crystal bursts evocative of the sea and sky.

necklace and earrings set



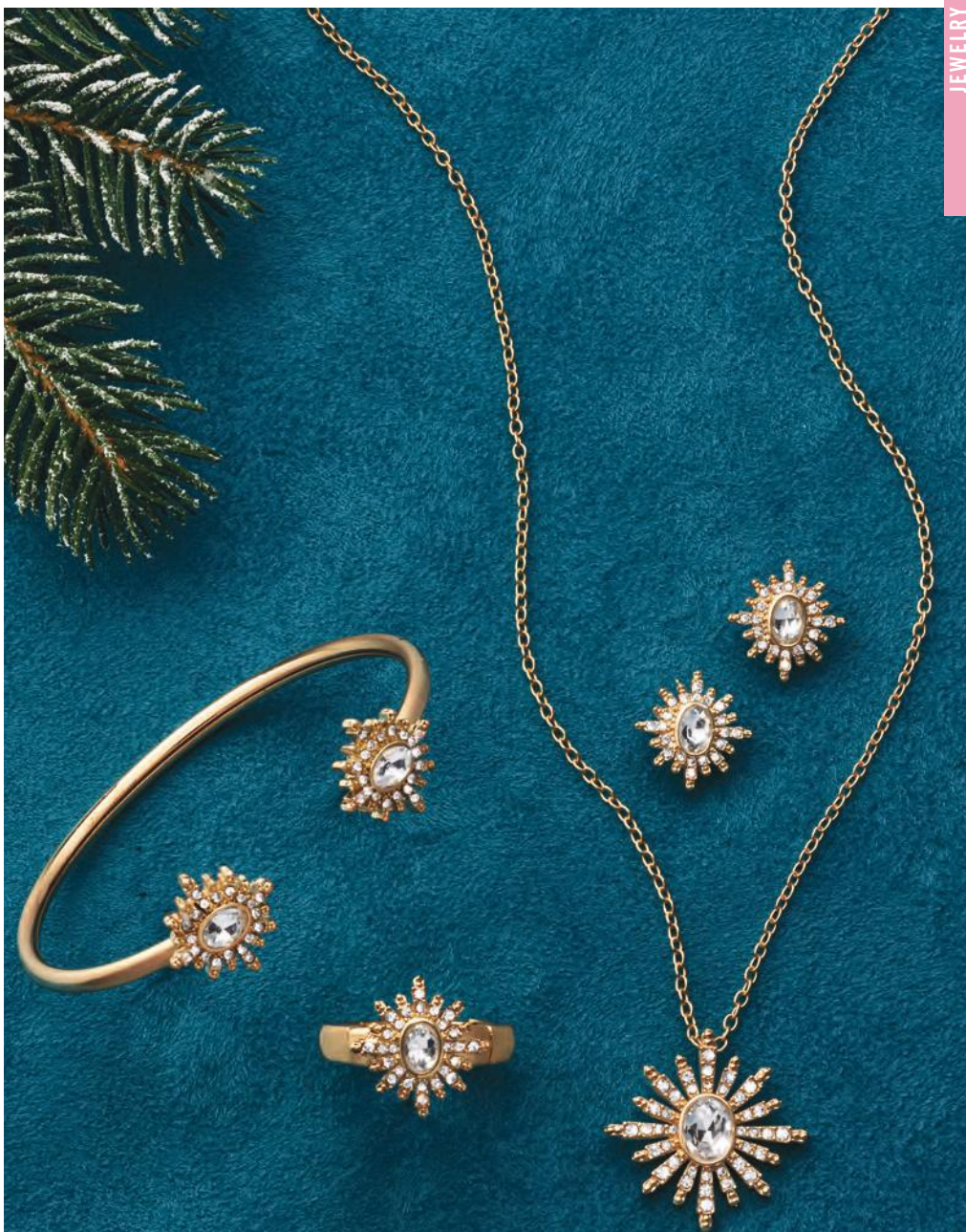
NEW

Authentic Abalone Collection
Genuine abalone shell set in antiqued silvertone.

Necklace and Earrings Set
16½" L with 3½" extender.
Pendant, 1" diam. Pierced earrings, ½" diam.
960-180
reg. \$19.99
\$14.99 the set

Stretch Ring
One size fits most.
Approx. 1" W.
960-247
reg. \$12.99
\$9.99

Pull-Cord Bracelet
One size fits most.
960-232
reg. \$12.99
\$9.99



Sunburst Collection

Pavé crystal glass stones
set in goldtone.

Earrings

Studs, $\frac{1}{2}$ " L.
Pierced.
226-818
reg. \$12.99
\$9.99

Necklace

$16\frac{1}{2}$ " L with $3\frac{1}{2}$ "
extender. Lobster
closure. 226-545
reg. \$16.99
\$12.99

Stretch Ring

One size fits most.
Approx. $\frac{3}{4}$ " L.
227-030
reg. \$16.99
\$12.99

Flexible

Cuff Bracelet
One size fits most.
226-856
reg. \$13.99
\$10.99

MOMENTS TO TREASURE

Give a gift that
sparkles with meaning



Women's Crystal Watch
Metal bracelet watch, 8" L.
Jet dial with bezel crystal
stones and glass stone
accents, 32mm diam. case.
524-480
reg. \$64.99
\$49.99

STERLING SILVER

**Sterling Silver
CZ Cross Necklace**
Sterling silver with
CZ pavé accents.
17" L with 1" extender.
Pendant, 1" L.
524-805
reg. \$69.99
\$54.99

**Sterling Silver
Tree of Life Necklace**
Sterling silver with
genuine amethyst and
clear CZ accents.
17" L with 1" extender.
Pendant, 3/4" L.
524-810
reg. \$69.99
\$54.99



**Sterling Silver
Half Eternity
Wedding Band**
With CZs. 1/8" W.
Sizes:
5 **375-562** 8 **375-596**
6 **375-577** 9 **375-600**
7 **375-581** 10 **375-615**
reg. \$49.99
\$39.99

**Sterling Silver
Trinity
Engagement Ring**
1/4" W. CZ stone,
approx. 1.25-carat
weight equivalent.
Sizes:
5 **375-620** 8 **375-668**
6 **375-634** 9 **375-672**
7 **375-649** 10 **375-687**
reg. \$58.99
\$44.99



**Stainless Steel
Footprints In the Sand Necklace**
Stainless steel with goldtone accents.
Three-layer functional locket with
inscription. 17" L with 1" extender.
Pendant, 1" L. **375-558**
reg. \$49.99
\$39.99



PLAYTEX® comfort and smoothing support

YOU'RE IN CONTROL

Shown:
Grey.

❖ Playtex® Bounce Control® Wirefree Bra (US4221)

Designed to reduce bounce. Extra side and back support. Adjustable no-slip straps. Breathable mesh neckline, wirefree design with wicking Cool Comfort® fabric.

Nylon/spandex. Hand wash, line dry.

Imported.
38-48C,
D,DD,DDD
(all colors).

reg. \$46
\$36.99



Shown:
Toffee.



❖ Playtex® 18 Hour® Original Comfort Strap® Wirefree Bra (4693)

Back closure. Natural latex rubber/polyester/nylon/cotton. Hand wash, line dry. Imported.

White, Natural Beige or **Toffee:** 36-48B,C; 34-48D,DD; 38-48DDD. **Zen Blue:** 36-42B; 36-44C,D; 38-46DD,DDD. **Sailor Blue:** 36-44C,D; 38-46DD; 44-46DDD. **Black:** 36-48B; 36-54C; 36-50D, 54D; 38-54DD. reg. \$39
\$33.99

Shown:
Light Beige.



❖ Playtex® 18 Hour® Posture Bra (E525)

PowerSupportX bra frame provides back support. 4-Way TruSUPPORT®. Front closure. Lightly lined.

Nylon/spandex. Hand wash, line dry. Imported. **White:** 34-48B,C; 36-48D,DD. **Light Beige:** 36-42B; 36-44C,D; 38-46DD. **Black:** 36-42B,C,D; 38-46DD,DDD. reg. \$39
\$32.99

Playtex® is a registered trademark used under license.

BALI® shape-smoothing styles to contour your curves

Shown:
Nude.



- WHITE
- NUDE
- WARM STEEL
- BLACK

❖ **Bali® Comfort Revolution® Front-Close Shaping Underwire Bra (3P66)**
 Front closure. Lightly lined.
 Nylon/polyester/spandex.
 Hand wash, line dry.
 Imported. Sizes: 34-42B,C,D,DD
 (all colors).
 reg. \$48
\$38.99

Shown:
Nude.



- WHITE
- SAND-SHELL
- NUDE
- BLACK

❖ **Bali® 18 Comfort Revolution® EasyLite™ with Back Closure Wirefree Bra (DF3496)**
 Back closure. Convertible straps.
 Removable foam cups. Wicking fabric.
 Nylon/spandex. Hand wash, line dry.
 Imported. Sizes: S, M, L, XL, 2XL, 3XL
 (all colors).
 reg. \$48
\$38.99

Shown: Nude.



❖ **Bali® Comfort Revolution® EasyLite Brief (DFEL61)**
 Nylon/spandex/cotton. Hand wash, line dry.
 Imported. Sizes: M/6, L/7, XL/8, 2X/9
 (all colors).
\$13 each

- WHITE
- SAND-SHELL
- NUDE
- CINNAMON
- COCOA BROWN
- BLACK

Shown: Nude.



❖ **Bali® Comfort Revolution® EasyLite Hi-Cut (DFEL62)**
 Nylon/spandex/cotton. Hand wash, line dry.
 Imported. Sizes: M/6, L/7, XL/8, 2X/9
 (all colors).
\$13 each

- WHITE
- SAND-SHELL
- NUDE
- BLACK

SKIN SO SOFT Botanical Essence / Original



**Botanical
Essence Bath Oil**
With nourishing
botanical extracts.
Uplifting herbal
scent. 16.2 fl. oz.
027-253
reg. \$31
\$24.99

Original Bath Oil
Hydrates during
or after bath
or shower.
16.9 fl. oz.
439-040
reg. \$24
\$16.99



**Original
Shower Gel**
Gently cleanses
and hydrates.
5 fl. oz.
933-005
reg. \$8
\$5.19



**Bonus-Size
Original
Body Lotion**
33.8 fl. oz.
336-043
reg. \$20
\$13.99



Bonus-Size Original Shower Gel
Gently cleanses and hydrates.
33.8 fl. oz.
170-731
reg. \$18
\$13.99



Original Body Lotion
48 hours of moisture.
11.8 fl. oz.
761-634
reg. \$11
\$7.69



Original Gelled Body Oil
Dries to a silky finish.
6.76 fl. oz. 939-500
reg. \$13
\$8.69

Bath Oil Spray
Locks in hydration.
5 fl. oz. 194-325 reg. \$14
\$9.29

Bonus-Size Bath Oil
Keeps skin hydrated after bath or shower. 25 fl. oz.
037-690 reg. \$30
\$21.69



Original Replenishing Hand Cream
24+ hours of moisturization.
3.4 fl. oz.
941-268
reg. \$5
\$2.69



Original Beauty Bar Soap
Skin-nourishing bar soap.
Creamy lather. Suitable for daily use on face, body and hands.
3.17 oz. net wt. 543-110
reg. \$4.50
\$3.49



SKIN SO SOFT Soft & Sensual

**Bonus-Size
Soft & Sensual
Shower Gel**
33.8 fl. oz.
171-848
reg. \$18
\$13.99

**Soft & Sensual
Body Lotion**
11.8 fl. oz.
934-312
reg. \$11
\$7.69

**Soft & Sensual
Replenishing
Hand Cream**
3.4 fl. oz.
867-315
reg. \$5
\$2.69

**Bonus-Size
Soft & Sensual
Body Lotion**
33.8 fl. oz.
336-062
reg. \$20
\$13.99



**Bonus-Size
Soft &
Sensual
Bath Oil**
25 fl. oz.
862-920
reg. \$30
\$21.69



**Soft & Sensual
Shower Gel**
Gently
cleanses
and hydrates.
5 fl. oz.
435-600
reg. \$8
\$5.19



**Soft & Sensual
Bath Oil**
Hydrates
during or
after a bath
or shower.
16.9 fl. oz.
504-614
reg. \$24
\$16.99



**Soft & Sensual
Beauty Bar Soap**
3.17 oz. net wt. 543-215
reg. \$4.50
\$3.49



**Soft &
Sensual
Gelled
Body Oil**
Dries to a
silky finish.
6.76 fl. oz.
908-244
reg. \$13
\$8.69



**Soft & Sensual
Antiperspirant
Deodorant
Roll-On**
2.6 fl. oz.
714-861
reg. \$3.60
\$2.69



SKIN SO SOFT

Radiant Moisture Replenishing Hand Cream

3.4 fl. oz.
941-272
reg. \$5
\$2.69



Bonus-Size Radiant Moisture Body Lotion

33.8 fl. oz.
337-346
reg. \$20
\$13.99



Radiant Moisture Shower Gel

Gently cleanses and hydrates.
5 fl. oz. 435-777
reg. \$8
\$5.19

Bonus-Size Radiant Moisture Shower Gel

33.8 fl. oz.
433-922
reg. \$18
\$13.99

Bonus-Size Radiant Moisture Bath Oil

With argan oil. Peony and musk scent.
25 fl. oz.
249-788
reg. \$30
\$21.69



Bonus-Size Supreme Nourishment Body Lotion

33.8 fl. oz.
337-475
reg. \$20
\$13.99



Comforting Shea Bath Oil

16.9 fl. oz.
015-071
reg. \$24
\$16.99



Supreme Nourishment Enriching Coconut Oil Wash

11.8 fl. oz.
933-703
reg. \$15
\$9.99



Supreme Nourishment Enriching Coconut Oil Lip Balm

Coconut flavor.
.14 oz. net wt.
958-370
reg. \$2
\$1.39



Fresh & Smooth Sensitive Skin

With meadowfoam oil and aloe. Fragrance-free.

Facial Hair Removal Cream

1 fl. oz. 605-088 reg. \$10

Body Hair Removal Cream

4.2 fl. oz. 923-448 reg. \$10
\$5.99 each



LET'S
CLEAR
SOME
THINGS
UP



developed for
all skin types, with
gently exfoliating
salicylic acid



Skin So Soft for Acne-Prone Skin

FOR FACE

A. Soothing Spot Gel
Skin looks radiant, even-toned. With rosemary, madecassoside and mint extracts. Leave on, dries clear. .5 fl. oz.
072-721 reg. \$18
\$13.99

B. Foaming Cleanser
With plant-based scrub, rosemary, madecassoside and mint extracts. 5 fl. oz.
041-647 reg. \$17
\$12.99

FOR BODY

C. Soothing Gel
Helps visibly improve tone and texture. Cooling sensation. With glycerin, allantoin and panthenol. Leave on, dries clear. 6.1 fl. oz. **040-636**
reg. \$20
\$15.99

D. Exfoliating Body Wash
Nondrying, nonirritating. With rosemary oil. 10.1 fl. oz. **041-556**
reg. \$20
\$15.99

E. Gentle Body Wash
Nondrying, nonirritating. With rosemary oil. 10.1 fl. oz. **039-325**
reg. \$20
\$15.99

F. Body Pads
Pre-soaked exfoliating cotton pads. Helps even tone. With hyaluronic acid and panthenol. 70 pads. **039-330**
reg. \$30
\$24.99

Suitable for daily use and free of synthetic fragrances.

AVON SENSES Gratitude Lavender & Cedarwood

❖ A. Candle

One wick. Soy-wax blend. 3" diam. x 3 1/2" H. Burn time, 40 hours. 7 oz. net wt.
504-686
reg. \$23
\$18.99

Place candle on trivet or holder before lighting to protect furniture. Never leave burning candles unattended. Keep away from children and pets.

B. Room Spray

Instantly refresh your home. 3.25 fl. oz.
361-851
reg. \$13
\$10.99

C. Air Diffuser

Six diffuser reeds. Fragrance oil, 2.37 fl. oz.
504-724
reg. \$30
\$24.99

D. Bath Salts

Pour a handful under warm running water. With sea salt, glycerin and sunflower seed oil. Use 1-3 times a week. 12.5 oz. net wt.
504-557
reg. \$23
\$18.99

E. Shower Steamers

Place one on shower shelf and activate with shower steam (avoid heavy stream of water). Each, 1 oz. net wt.
504-428
reg. \$26
\$20.99
six shower steamers





A. Body Mist
With aloe vera extract, refreshes and leaves skin feeling soothed. 8 fl. oz. **034-888** reg. \$18 **\$14.99**

B. Shower Gel
Moisturizing cleanser derived from coconut. 10 fl. oz. **035-190** reg. \$17 **\$13.99**

C. Body Lotion
Smooths and softens with moisture-rich shea butter and vitamin E. 8 fl. oz. **035-152** reg. \$17 **\$13.99**

D. Hand Soap
With moisturizing glycerin, leaves hands feeling clean and soft. 10.1 fl. oz. **852-081** reg. \$13.99 **\$10.99**

E. Hand Cream
With shea butter and antioxidants, leaves dry hands feeling buttery smooth. 2.5 fl. oz. **015-029** reg. \$6 **\$4.99**

F. Body Scrub
Removes dry, dead skin while shea butter and olive and avocado oils help moisturize. 9 oz. net wt. **530-314** reg. \$22 **\$17.99**

COZY VANILLA & COCONUT

Envelop yourself in a cozy cloud of comforting vanilla, creamy coconut and calming chamomile.

Free from parabens, mineral oil, silicone, phthalates and dyes.



SENSES Fresh Bergamot / Sparkling Grapefruit



Hand Cream
With shea butter and antioxidants.
2.5 fl. oz. **852-498** reg. \$6
\$4.99

Hand Soap
With moisturizing glycerin.
10.1 fl. oz. **852-297** reg. \$13.99
\$10.99

Shower Gel
Coconut-derived cleanser.
10 fl. oz. **034-873**
reg. \$17
\$13.99



FRESH BERGAMOT & WILD MINT

A fresh bouquet of dewy flowers mixed with spicy bergamot, clean wild mint and luminous solar musk.

Free from parabens, mineral oil, silicone, phthalates and dyes.



Hand Cream
With shea butter and antioxidants.
2.5 fl. oz. **852-120** reg. \$6
\$4.99

Hand Soap
With moisturizing glycerin.
10.1 fl. oz. **852-115** reg. \$13.99
\$10.99

Body Mist
With refreshing aloe vera extract.
8 fl. oz. **034-687**
reg. \$18
\$14.99



SPARKLING GRAPEFRUIT & ORANGE BLOSSOM

A juicy mix of zesty grapefruit, bright orange blossom, delicate honeysuckle and luscious peach.

SENSES Bubble Bath / Shower Gel



Cherry Blossom Bubble Bath
Flirty and sweet.
24 fl. oz.
425-033
reg. \$11
\$8.99



Vanilla Cream Bubble Bath
Rich and creamy.
24 fl. oz.
214-220
reg. \$11
\$8.99



Cucumber Melon Bubble Bath
Fresh and sweet.
24 fl. oz.
688-950
reg. \$11
\$8.99



Orange & Honeysuckle Bubble Bath
Fresh and sunny.
24 fl. oz.
047-808
reg. \$11
\$8.99



Endless Ocean Bubble Bath
Marine and breezy.
24 fl. oz.
425-048
reg. \$11
\$8.99



Lily & Honeysuckle Blossom Bubble Bath
Fragrant and refreshing.
24 fl. oz.
423-394
reg. \$11
\$8.99



Soft Pink Bubble Bath
Lilac and rose.
24 fl. oz.
425-052
reg. \$11
\$8.99



Sensitive Skin Bubble Bath
Chamomile scent.
24 fl. oz.
213-151
reg. \$11
\$8.99



Lavender Garden Bubble Bath
Soft and serene.
24 fl. oz.
424-735
reg. \$11
\$8.99



Blushing Cherry Blossom Hydrating Shower Gel
5 fl. oz.
423-299
reg. \$6
\$3.69



Silky Vanilla Hydrating Shower Gel
5 fl. oz.
462-105
reg. \$6
\$3.69



Fresh Cucumber & Melon Hydrating Shower Gel
5 fl. oz.
462-071
reg. \$6
\$3.69



Juicy Pomegranate & Mango Hydrating Shower Gel
5 fl. oz.
462-139
reg. \$6
\$3.69



Exfoliation Mitt
 Helps remove dead skin, and keeps skin feeling soft and smooth. Microfiber jacquard, with nylon spandex cuff.
439-734 reg. \$11
\$8.99



Body Massager
 Helps stimulate circulation and relieve tension in muscles, especially in back and limbs. Fits into palm for easy control and flexibility with customizable pressure.
439-920 reg. \$11
\$8.99



Smooth Moves Anti-Cellulite Massager
 Use with gel to help firm and smooth skin. Rotating rollers help promote circulation and reduce the appearance of cellulite. Plug-in device. **011-296**
 reg. \$70
\$62.99



Smooth Moves Anti-Cellulite Cooling Gel
 L-carnitine and chai hu help target fat cells.
 6.7 fl. oz. **722-722 reg. \$21**
\$12.99



Affirm Yourself Firming Body Cream
 Caffeine complex helps skin look more toned.
 6.7 fl. oz. **522-970 reg. \$21**
\$12.99



recharge

Avon Aromatherapy Body Lotion Bright Day Ahead

Charge your day with positive energy. With citrus and ginger fragrance oils to uplift your mood. 5.8 fl. oz. **584-670** reg. \$17 **\$13.99**



refresh

Avon Aromatherapy Body Lotion Bye-Bye Stress

Take a moment to de-stress. With refreshing spearmint and eucalyptus fragrance oils for stress relief and mental clarity. 5.8 fl. oz. **584-684** reg. \$17 **\$13.99**



relax

Avon Aromatherapy Body Lotion Sleep Tight Zzz

Unwind after a long day. With rose and lavender fragrance oils to help promote a restful sleep. 5.8 fl. oz. **584-866** reg. \$17 **\$13.99**



Avon Aromatherapy Minding My Mood 4-in-1 Essential Oil Blends

Natural multipurpose fragrance oils.

Energize With lively mandarin and stimulating ylang-ylang.

Calm With comforting lavender and soothing star anise.

Each, 1.7 fl. oz. **606-376** reg. \$32

\$25.99 boxed set of 2



MOISTURE THERAPY / PHYSIOGEL / MICROBIOME

Moisture Therapy Calming Relief Hand Cream

With colloidal oatmeal. Relieves the itchiness associated with dry hands. 4.2 fl. oz. **786-349** reg. \$6 **\$2.69**



Moisture Therapy Intensive Healing & Repair Hand Cream

Relieves extremely dry, chapped hands. Fragrance-free. 4.2 fl. oz. **482-937** reg. \$6 **\$2.69**



Moisture Therapy Intensive Healing & Repair Extra Strength Cream

24-hour moisturization. Fragrance-free. 5.3 oz. net wt. **772-972** reg. \$8 **\$5.39**



Moisture Therapy Bonus-Size Body Lotions

Each, 33.8 fl. oz. reg. \$20 **\$14.99 each**

Intensive Healing & Repair Body Lotion

72-hour moisture for extra-dry skin. Fragrance-free. **611-644**

Daily Skin Defense Body Lotion

Helps restore moisture to everyday dry skin. **603-028**

Calming Relief Body Lotion

Soothes and relieves dry, itchy skin. Fragrance-free. **761-620**



Physiogel Daily Moisture Therapy Dermo-Cleanser for face

Soap-free facial cleanser for dry and sensitive skin. 5 fl. oz. **094-384** reg. \$24 **\$18.99**



Physiogel Daily Moisture Therapy Facial Cream*

For normal to dry sensitive skin. 5.1 fl. oz. **847-511** reg. \$42 **\$33.49**



*The National Eczema Association has awarded the Seal of Acceptance™ to Physiogel Daily Moisture Therapy Facial Cream.



Moisture Therapy Balance + Soothe Body Lotion
Skin looks softer and healthier. 13.2 fl. oz. **438-082** reg. \$25 **\$20**

Moisture Therapy Balance + Soothe Body Wash
Softens as it gently cleanses. 13.2 fl. oz. **438-078** reg. \$23 **\$18**

Avon Microbiome by REACH® Hygiene Deodorant Stick
Floral citrus scent. Aluminum-free. 24-hour odor protection. 2.65 oz. net wt. **524-528** reg. \$13 **\$10.99**





Veilment CBD Dry Body Oil
 Lightweight. Nongreasy. Quickly nourishes skin with instantly replenishing hydration while it helps reduce redness and soothe irritation so skin looks healthy and radiant. Free of fragrance, mineral oil, parabens, phthalates and THC. 3.73 fl. oz. **869-485** reg. \$37 **\$30**



Veilment CBD Nourishing Body Cream
 Skin feels soft, smooth and nourished. Jasmine scent. No THC. 5 fl. oz. **524-513** reg. \$33 **\$29.50**



Veilment CBD Nourishing Body Cream (Tube)
 Same formula as original, now in a convenient tube. Skin feels soft, smooth and nourished. Jasmine scent. No THC. 6.7 fl. oz. **254-229** reg. \$38 **\$33**



Veilment CBD Soothing & Nourishing Body Cream
 Concentrated formula. Visibly soothes and smooths. Geranium scent. No THC. 1.7 fl. oz. **524-509** reg. \$33 **\$29.50**



Veilment Hemp Seed Oil Dry Body Oil
 Light, easily absorbed. Helps deeply nourish and hydrate dry and irritated skin. Fragrance-free. Hypoallergenic. 5 fl. oz. **564-106** reg. \$35 **\$28**



Veilment Lumière Sunless Tanning Serum
 Mix and blend into daily body moisturizer for a customized, natural glow. Suitable for different skin tones. With skin-nourishing hemp seed oil. Each, 1.01 fl. oz. reg. \$24 **\$19.99 each**



Light/Medium 422-307

Medium/Dark 422-326

An innovative exfoliating body wash that cools and refreshes with an ultimate veil of moisture

Glacial Water Cooling Body Scrub & Cleanser

Fresh Canadian glacier water with gently exfoliating apricot seed, moisturizing ceramides, cooling menthol and a clean peppermint scent. 13.5 fl. oz. **735-399** reg. \$15 **\$13.69**



HIMALAYA PINK SALT

Calming sage scent.

Exfoliating Soap

Daily body scrub and cleansing bar with Himalayan pink salt, walnut shell, apricot seed and cranberry powder. 5.3 oz. net wt.

260-440 reg. \$8 **\$6**

Body Scrub & Cleanser

Himalayan pink salt.

13.5 fl. oz.

708-252 reg. \$15 **\$13.69**



Dead Sea Salt

Body Scrub & Cleanser

Israeli Dead Sea salt.

Energizing citrus-ginger scent. 13.5 fl. oz.

707-988 reg. \$15 **\$13.69**



Black Rose

Body Scrub & Cleanser

French rose oil and apricot-seed powder. Aromatic black rose scent. 13.5 fl. oz.

707-969 reg. \$15 **\$13.69**





- **protects against** mosquitoes, deer ticks, no-see-ums, sandflies, gnats and biting midges
- **repels deer ticks** that may carry and transmit Lyme disease
- **DEET-free/PABA-free**
- **water-resistant**
- **SPF 28 & SPF 30**

Expedition for all-in-one protection from sun+bugs

BUG GUARD PLUS IR3535® EXPEDITION

No need to wash off.
Dermatologist-tested.

A. Aerosol Spray

SPF 28
Repels mosquitoes for 8 hours, deer ticks for 12 hours.
4 oz. net wt.
521-370 reg. \$20
\$14.99

B. Family-Size Pump Spray

SPF 30
8 fl. oz. 255-259
reg. \$24
\$17.99

C. Pump Spray

SPF 30
Repels mosquitoes for 8 hours, deer ticks for 10 hours.
4 fl. oz. 255-278 reg. \$15
\$9.99



Read and follow label directions and precautions.



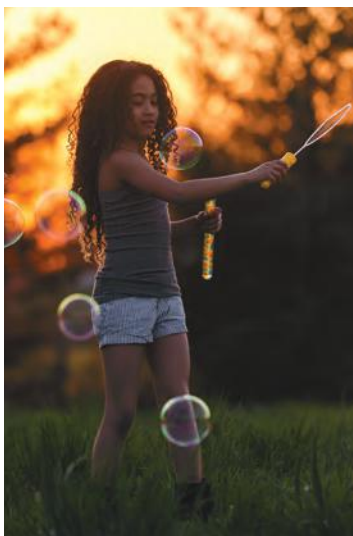
Gentle Breeze protects against sun+bugs+water

- **SPF 30**
- **water-resistant**
- **DEET-free/PABA-free**
- **with vitamin E & aloe**
- **repels mosquitoes** that may carry and transmit the Zika virus

BUG GUARD PLUS IR3535® GENTLE BREEZE SPF 30 LOTION

No need to wash off.
Dermatologist-tested.
4 fl. oz. 851-324
reg. \$15
\$9.99





- **protects against** mosquitoes, deer ticks, sandflies, no-see-ums, gnats, biting midges and black flies
- **repels deer ticks** that may carry and transmit Lyme disease
- **DEET-free/PABA-free**
- **with vitamin E & aloe**



Anti-Itch Spray*
Provides temporary itch relief from insect bites. 2 fl. oz. **972-031** reg. \$11 **\$7.69**

*Does not repel insects.

Picaridin for when bugs are most active **dawn+dusk**



BUG GUARD PLUS PICARIDIN

- A. Pump Spray**
Repels mosquitoes for 8 hours, deer ticks for 12 hours. 4 fl. oz. **255-373** reg. \$15 **\$9.99**
- B. Family-Size Pump Spray**
8 fl. oz. **255-187** reg. \$24 **\$17.99**
- C. Towelettes**
Repels mosquitoes for 8 hours, deer ticks for 12 hours. Resealable bag holds 8 packets. Each towelette, 9" L x 5 1/2" W. Each, .3 fl. oz. **269-562** reg. \$16 **\$11.69** pack of 8
- D. Aerosol Spray****
Repels mosquitoes for 6 hours, deer ticks for 7 hours. 4 oz. net wt. **315-243** reg. \$20 **\$14.99**

Read and follow label directions and precautions. **Aerosol Spray does not contain aloe.



Avon Shower Brush

Long handle to easily reach down back. Brush helps to remove dead skin cells as it cleanses. Back of brush features many massage nubs. Non-slip comfort handle has a convenient hanging loop for easy storing and allows brush to dry quickly. **904-727 reg. \$10 \$7.99**

Veilment Care Moisturizing Bar Soap

Derived from olive oil and infused with coconut oil. 2.8 oz. net wt. **380-864 reg. \$2.50 \$1.99**



Moisture Therapy Intensive Healing & Repair Moisturizing Lip Treatment Balm

.14 oz. net wt. **285-117 reg. \$2 99¢**



Avon Flavor Savers Lip Balm

Vanilla **209-501**
Melon **209-334**
Each, .14 oz. net wt. **reg. \$2 99¢ each**



Veilment Care Lip Balm

Infused with naturally moisturizing jojoba oil and coconut oil to keep lips soft and supple all day. Delicately scented and tinted. **Cherry 604-168 Strawberry 602-720** Each, .14 oz. net wt. **reg. \$2 99¢ each**



DEODORANTS

Roll-On Anti-Perspirant Deodorant

Each, 2.6 fl. oz. reg. \$3.60

\$2.69 each



Candid
656-095
Far Away
836-226
Haiku
836-264
Imari
180-887
Rare Gold
836-250
Rare Pearls
906-897
Night Magic
Evening Musk
836-298
Odyssey
836-317
Sweet Honey
941-579
Timeless
941-583



On Duty Unscented
926-820
On Duty Sport
094-365
On Duty Original
393-970
Cool Confidence Original
926-777
Cool Confidence Baby Powder
926-815
Feelin' Fresh Original
925-546

Black Suede
337-403
Mesmerize
663-442
Wild Country
941-602

Perfumed Liquid Deodorant
Soft floral scent.
2 fl. oz.
687-681
reg. \$6
\$4.50



FOOT WORKS

Overnight Renewing Cream

3.4 fl. oz.
295-205
reg. \$9
\$5.99



Deep Moisturizing Cream

2.5 fl. oz.
308-962
reg. \$6
\$4.69



Intensive Moisture Foot Cream

Suitable for diabetics.
2.5 fl. oz.
302-012
reg. \$6
\$4.99



Intensive Callus Cream

3.4 fl. oz.
851-310
reg. \$7
\$5.99



Maximum Strength Cracked Heel Cream

2.5 fl. oz.
310-404
reg. \$7
\$5.99



Arthritis Achy Foot and Muscle Cream

2.5 fl. oz.
314-194
reg. \$7
\$5.99



Deodorizing Spray

Can also be used in footwear.
3.5 oz. net wt.
313-236
reg. \$10
\$7.99



Pedicure Kit

Case, 3 1/2" L x 4 3/4" W. Metal, man-made materials. Includes: nail clipper, toenail clipper, nail file, scissors, cuticle pusher.
121-029
reg. \$11
\$8.39



Pedicure Tool

4-in-1 tool! Plastic.
3 1/8" L x 1 3/4" W x 1 1/2" H.
Includes: fine-grain file, metal file, pumice, brush.
592-712 reg. \$11
\$8.39



PERIOE HIMALAYA / WHITENING ESSENTIALS / MICROBIOME

**Himalaya Pink Salt
Toothpaste Ice Mint**
Pink gel paste with also
vera essence beads.
Fluoride-free.
3.4 oz. net wt.
883-276 reg. \$6
\$5



**Whitening Essentials Toothpaste
Black Charcoal
Clean Mint**
With 10X more activated
charcoal (compared to Blanc
Charcoal*) to help remove
stains and brighten teeth.
5.5 oz. net wt. **820-622 reg. \$11**
\$9.19



*Sold online only.

**Whitening Essentials
Toothpaste
Original Cool Mint**
With highly effective
whitening agents to
keep your smile bright.
5.5 oz. net wt. **478-259**
reg. \$10
\$8.19



Microbiome Toothpaste

With fluoride, plus microbiome technology containing
prebiotics to help maintain a healthy oral care balance.

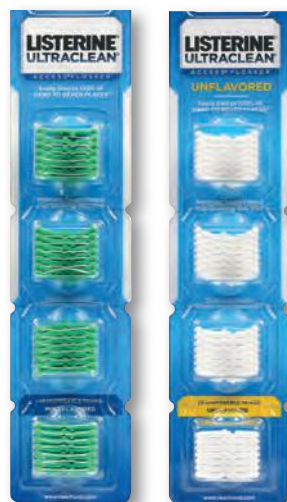
Total Care
Helps fight plaque
and cavities, and
promotes fresh
breath. With
charcoal and
propolis extract.
Strong Mint flavor.
5.4 oz. net wt.
543-268
reg. \$6
\$4.99



REACH® & LISTERINE® FLOSS always remember to floss!



LISTERINE® Ultraclean® Access® Flosser
 Long ergonomic handle with nonslip grip. Unflavored floss heads. 239-360 reg. \$6
\$4.79
 includes 8 floss heads



LISTERINE® Ultraclean® Access® Mint Flosser Refill
 Disposable mint-flavored floss heads. For use with the LISTERINE® Ultraclean® Access® Flosser. 239-374
 reg. \$7
\$5.64 pack of 28

LISTERINE® Ultraclean® Access® Unflavored Flosser Refill
 Disposable unflavored floss heads. For use with the LISTERINE® Ultraclean® Access® Flosser. 239-393
 reg. \$7
\$5.64 pack of 28



REACH® Unflavored Waxed Floss
 Accepted by the American Dental Association. 55 yards. 239-317
 reg. \$3
\$1.99



LISTERINE® Cool Mint® Floss
 Waxed coating is shred-resistant. Mint flavor for the feeling of clean, fresh breath. 55 yards. 239-355
 reg. \$5
\$3.99



LISTERINE® Ultraclean® Mint Floss
 With patented MICRO GROOVES® technology for greater plaque removal and superior cleaning. 30 yards. 239-321
 reg. \$5
\$3.99

REACH® / PERIOE DUAL SONIC Portable Electric Toothbrush

REACH® Interdental Brush

Angled 14°, like dental tools. Helps clean hard-to-reach spots, including back corners. Removes up to 30% more plaque compared to brushing alone! Customized for different spaces between teeth. Specially coated wire for gum protection. Ribbed edge for a better grip. **reg. \$5 \$3.99 each**



WIDE
Pack of 10
630-164

TIGHT
Pack of 10
630-934

EXTRA TIGHT
Pack of 10
630-236

REACH® Professional Floss Picks

Acute angle (14°), like dental tools, for better reach. Sturdy pick easily fits between teeth. Dented handle for a better grip. Mint flavor. Pack of 90. **630-179 reg. \$6 \$4.59 pack of 90**



GOOD VIBES TO GO

Perioe Dual Sonic Portable Electric Toothbrush

MICRO AND GENERAL BRISTLES FOR EXCEPTIONAL CLEANING

TWO-MINUTE TIMER WITH 30-SECOND INTERVALS/AUTO OFF FUNCTION

LONG HANDLE COMFORT GRIP

HYGIENIC CAP FOR ON-THE-GO CONVENIENCE!

❖ **Perioe Dual Sonic Portable Electric Toothbrush**
Battery powered—great on the go! Adjustable dual mode (strong/gentle). Up to 27,000 vibrations per minute. Four replaceable brush heads. AAA alkaline replaceable battery included. **432-376 reg. \$45 \$36.99 toothbrush with 4 brush heads**

❖ Perioe Dual Sonic Portable Electric Toothbrush Refillable Heads

Mix of four types of bristles targets different areas: molar, teeth surface, interdental, gum. Replace heads every three months. **433-430 reg. \$12 \$9.99 pack of 2 brush heads**





Elastine Salon de Color

100% grey coverage and rich, long-lasting color...without ammonia, parabens, mineral oil or benzophenone. For luxurious and healthy-looking hair. No appointment necessary. **reg. \$9.99**
\$7.99 each

BROWNS

Make faded brown color vibrant!

4B / Dark Chocolate Brown 039-727



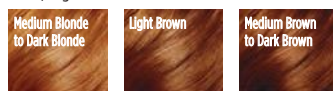
5CB / Medium Chestnut Brown 040-110



AUBURNS

Refresh, brighten or deepen color.

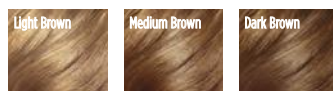
6R / Light Auburn 044-608



BLONDES

Lighten roots or completely color.

7BL / Natural Dark Blonde 047-827



Advance Techniques 360 Nourish with Moroccan Argan Oil Leave-In Treatment

Moisturizes dry, damaged hair. Infuses it with instant shine and silky smoothness.

2 fl. oz.
511-411
 reg. \$16
\$11.69



Advance Techniques Dry Ends Serum

Helps mend and nourish split ends instantly. With pro-vitamin B. Hair looks smooth and silky.

2 fl. oz. **883-261**
 reg. \$11
\$7.99



Advance Techniques Daily Shine 2-in-1 Shampoo & Conditioner

Leaves hair feeling clean, conditioned and frizz-free. Suitable for daily use.

11.8 fl. oz.
803-230
 reg. \$11
\$8.99





KICK BRASS

Visibly **repair damaged hair**. Keep it looking **vivid** and **brass-free** with healthy **shine**.

Elastine Salon de Color Color Vibe

Nonirritating formula, suitable for any hair/scalp type.

Purple Shampoo **436-109**

Purple Conditioner **436-955**

Each, 8.4 fl. oz. reg. \$17

\$13.99 each



WHAT'S IN IT

VIOLET PIGMENT

helps neutralize brassy yellow and orange tones

CAMELLIA OIL & GREEN TEA EXTRACT

help protect and define hair color

- **HYDROLYZED KERATIN**
- **PANTHENOL** • **COLLAGEN**

help repair weakened and damaged hair

HYALURONIC ACID

helps hydrate hair and scalp and reduce frizziness

APPLE CIDER VINEGAR

helps boost radiance

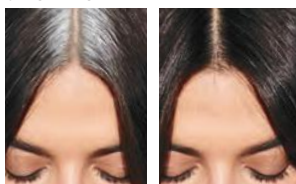


Root Touch-Up

An instant way to cover up your roots and bare spots. Built-in mirror. Each, .25 oz. net wt. reg. \$18

\$15.99 each

SIMULATION



before touch-up

after touch-up



Reddish Brown
243-627

Light Brown
244-642

Dark Brown
245-213

Black
245-251

ELASTINE PROPOLITHERA / BEE CURLY

ELASTINE PROPOLITHERA

Volumizing

Enhances texture so hair looks fuller, thicker, stronger. Each, 16.9 fl. oz.

A. Shampoo

892-607

B. Conditioner

892-870

Damage Repair

Helps hair appear smooth and manageable.

Each, 16.9 fl. oz.

C. Shampoo

053-082

D. Conditioner

638-681

E. Hair Oil Serum

Helps to strengthen, protect, moisturize and smooth hair, and to add shine. 5.7 fl. oz. **895-190**

F. Hair Mask

Enriched with nutrients to help deeply nourish hair and mend damaged split ends. 10.1 fl. oz.

150-301

reg. \$18 each

\$15.99 each



ELASTINE PROPOLITHERA BEE CURLY

A patented technology* that helps care for curly hair to create silky, super-lustrous curls even after the first use.

Shampoo

16.9 fl. oz.

059-975

reg. \$29

\$23.99



Conditioner

16.9 fl. oz.

060-846

reg. \$29

\$23.99



Serum

5.7 fl. oz.

061-565

reg. \$29

\$23.99



*Shampoo and conditioner only.

ELASTINE PROPOLITHERA REJUVENATING styling boosters

Aloe Dual-Active Hair Serum

Intense hydration with vitamins, minerals and other nutrients to bring damaged or chemically processed hair back to life.

3.4 fl. oz.
102-585
 reg. \$30
\$25



Leave-In Conditioner

Hydrates and nourishes dry hair, infusing it with rich luster.

8.1 fl. oz.
102-570
 reg. \$19
\$15



Serum Treatment

Upon contact with water, nutrient-rich, moisturizing liquid visibly transforms into a creamy formula. 7.8 fl. oz.

359-821
 reg. \$22
\$18



Curl Cream

Rich hydration for bouncy, defined curls. Reduces frizz for a smooth, healthy-looking shine. 5 fl. oz.

102-475
 reg. \$19
\$15



Rejuvenating hair treatment for a lustrous-looking shine, enriched with **GOLD-Polypeptide Protein Complex** to help repair and strengthen damaged hair and keep it looking silky smooth and voluminous.

Hair Deep Conditioning Treatment Cap

Nourishing deep-conditioning treatment mask replenishes moisture in one cap application. With the bee goodness of propolis (tree sap and beeswax), honey and royal jelly for healthy-looking body and shine. Berry, rose and peony scent. Use as needed. Single-use cap. 1.4 oz. net wt.

053-761
 reg. \$8
\$6.99



1 After shampooing, remove excess water. Cover all hair with cap.



2 Adjust cap to size of your head.



3 Lightly massage for even absorption of nutrients.



4 Remove cap after 10-15 minutes. Rinse thoroughly.



SPRING IS IN THE HAIR!

Shampoo and conditioner in one, with patented 2-in-1 technology, moisturizes hair while controlling odors so it looks and feels fresh and smooth, with a **fragranced formula** to give it a forever-springtime scent. Free of sulfates and parabens. Suitable for daily use.

Love Me

Jasmine and ylang-ylang. 8.4 fl. oz.
154-857 reg. \$16
\$12.99

Fresh Citrus

Lime, mandarin and basil. 8.4 fl. oz.
154-876 reg. \$16
\$12.99

Pure Breeze

White rose and Bulgarian rose. 8.4 fl. oz.
154-861 reg. \$16
\$12.99

STYLING BRUSH-UP

for all hair types

**Avon
Detangling
Comb**

Glides through wet or dry hair without tugging or pulling.

504-820
reg. \$5.99
\$4.99



**Avon
Blow-Dry
Round
Hairbrush**

Smooth and straighten, or curl and wave. Easy, painless styling with comfort handle.

504-800
reg. \$17.99
\$14.99



**Avon
Detangling
Hairbrush**

Flexible bristles move through knots and tangles and minimize pain and split ends.

504-815
reg. \$12.99
\$9.99



**Avon
Compact
Hairbrush**

Pop it in your purse and go. Use on wet or dry hair.

504-743
reg. \$9.99
\$7.99

ELASTINE HEMPHARMX / CBD / MOISTURE ESSENTIALS

Elastine HempharmX

Shampoo and conditioner with cold-extracted hemp seed oil. Contains omega 3-6-9, known to help moisturize and nourish hair and prevent breakage with weightless hydration that delivers full volume. Vegan formulas. Both silicone-free. Shampoo is sulfate-free.

Hydrating Shampoo

359-836

Hydrating Conditioner

360-544

Each, 13.5 fl. oz.
reg. \$24
\$20 each



Elastine CBD & Hemp Seed Oil Cooling & Soothing Conditioner

Helps moisturize dry hair. Free from parabens and sulfates. No THC.

436-989

11.8 fl. oz.
reg. \$23
\$19



Elastine Moisture Essentials

With richly moisturizing ceramide to help visibly strengthen strands, protect hair from wear and tear, and promote elasticity and shine.

ceramide + biotin

Helps dry, damaged hair look and feel fuller and healthier.

Shampoo 495-106

Conditioner 495-110

Each, 12.7 fl. oz. reg. \$9
\$6.99 each

ceramide + argan oil

Helps moisturize and reduce split ends, and keeps locks looking shiny and smooth.

Shampoo 495-125

Conditioner 495-130

Each, 12.7 fl. oz. reg. \$9
\$6.99 each



want volume?

Rosemary & Sea Salt

With rosemary to help promote thicker hair and scalp health, sea salt to add body.

Volumizing Shampoo 240-556

Volumizing Conditioner 246-831

Each, 6.7 fl. oz.

reg. \$4.50

\$3.79
each



Elastine Botanicals

Infused with revitalizing babassu seed oil, chamomile flower water and lemon chestnut extract, and pH balanced, like healthy hair, it helps bring damaged hair back to life, adding dewy moisture for a smooth, natural-looking sheen.

NO • Parabens • Silicone • Mineral oil
• Triclocarban • Triclosan

dry hair?

Cherry Blossom & Hyaluronic Acid

Moisturize dry, damaged hair with our hyaluronic acid-infused formula as thirsty strands drink it up.

Moisturizing Shampoo 239-943

Moisturizing Conditioner

240-059

Each, 6.7 fl. oz.

reg. \$4.50

\$3.79
each



frizzy hair?

Argan & Castor

With nourishing ingredients, helps protect hair from damage and breakage. Adds luster and smoothness.

Anti-Frizz Shampoo 150-866

Anti-Frizz Conditioner

150-904

Each, 6.7 fl. oz.

reg. \$5.39

\$4.49
each



CHI® ESSENTIALS / CHI® ESSENTIALS REVIVE KERATIN + BONDING

CHI® Essentials Replenishing Shampoo

Gentle daily shampoo with essential vitamins, minerals and amino acids. No sulfates or parabens, so it won't strip hair of natural oils. Safe for color-treated hair.

12 fl. oz.
589-140
reg. \$20
\$16.99



CHI® Essentials Moisturizing Conditioner

Lightweight daily conditioner. Infused with aloe to lock in rich moisture. With vitamins A and B to help strengthen hair from roots to ends, increase elasticity and help smooth split ends and frizz.

12 fl. oz.
589-409
reg. \$20
\$16.99



CHI® Essentials Repairing Serum

Deeply penetrating-yet-lightweight serum helps strengthen, protect, moisturize and smooth. With vitamin A to help seal split ends, and rosemary to help boost volume and shine.

6 fl. oz. 589-413
reg. \$33
\$27.59



CHI® Essentials Revive Keratin + Bonding Restoring Shampoo

Cleanses, moisturizes and protects against split ends and frizz.

12 fl. oz. 451-192
reg. \$25
\$19.99

CHI® Essentials Revive Keratin + Bonding Protecting Serum

Apply to damp or dry hair for smoothness and shine, and as a hair shield from the sun.

3 fl. oz. 451-340
reg. \$42
\$34.99

CHI® Essentials Revive Keratin + Bonding Restoring Conditioner

Helps restore dry, damaged and brittle hair.

12 fl. oz. 451-211
reg. \$25
\$19.99



CHI® PRO STYLERS & TOOLS for salon-quality results

CHI® ENVIRO 54® Natural Hold Hair Spray

For brushable hold.
Lightweight. Fast-drying.
No build-up. Anti-humidity.
Thermal protectant for
blow-drying. With silk
to help build hair's
strength and resilience,
and natural botanicals
to add volume and
enhance shine.
Paraben-free.
10 oz. net wt.
908-450
reg. \$26.50
\$21.50



BioSilk® Silk Therapy®

Replenishes and reconstructs to help
repair and protect all hair types. Tames
frizz and flyaways and leaves hair silky
smooth with reflective shine. Helps
shield hair from UV rays, heat and
humidity. 5.64 fl. oz.

011-349
reg. \$35
\$28.99



CHI® 1\"/>

Ceramic Pro Spin 'n' Curl
Preset temperature
controls with adjustable
timers and LED screen
display. For any hair type.
12\"/>

Use only as directed.
471-527
reg. \$199
\$179

ATTACHMENTS INCLUDED



CHI® Advanced Ionic Compact Hair Dryer

Powerful 1875-watt ion
generator emits negative
ions to reduce drying time.
Lightweight, compact
design. Rapid Clean
Technology with Blue LED
light for cleaner air during
styling. Adjustable heat and
air-speed settings. Removable
filter. 6½ ft. cord. Use only as
directed. **471-474** reg. \$150
\$135



DR. GROOT your solution to thinning hair



Premium Scalp-Cleansing Brush

Helps promote cleansing of residue while massaging to reinvigorate health of scalp as it helps to stimulate circulation. **065-776**

reg. \$19

\$16



Scalp-Fortifying Serum Treatment

Moisturizes and helps support healthy hair roots and growth.

6.7 fl. oz.

782-271

reg. \$35

\$29



Scalp-Fortifying Hair-Thickening Shampoo

With coconut oil, cleanses as it helps moisturize dry scalp and hair.

13.5 fl. oz.

778-014

reg. \$35

\$29



KEEP SCALP & HAIR FLAKE-FREE

What's in it:

3% SALICYLIC ACID
Clears and helps prevent flakes and itching associated with dandruff.

Panthenol
Helps hydrate, soothe and protect hair.

NIACINAMIDE
Helps refresh scalp by helping to retain moisture.

BIOTIN
(Vitamin B7)
Known to help visibly improve hair volume.

CAFFEINE
Known to help visibly improve scalp condition.

GINGER, ROSEMARY, FRESH MINT
Three plant-derived scalp-care ingredients.

MENTHOL
Helps scalp feel cool, clean and refreshed.

No sulfates or parabens.



Anti-Dandruff Scalp Care Shampoo
No silicones.
10.1 fl. oz. **451-412**
reg. \$27
\$21.99

Anti-Dandruff Scalp Care 2-in-1 Shampoo and Conditioner
10.1 fl. oz. **451-431**
reg. \$27
\$21.99

RETURN TO BALI

Top: Acai Berry, Japanese Plum, **Sparkling Grapefruit**

Mid: Water Lily, **Salted Tuberose**, Honeysuckle

Dry: Sacred Woods, Musk, **Golden Amber**

Far Away Ball
Eau de Parfum
fruity floral
1.7 fl. oz.
451-389
reg. \$25
\$9.99

**LOWEST
PRICE
THIS YEAR!**



Enjoy special prices and offers with an Avon account or Representative.

© 2023 The Avon Company. All rights reserved.

CAMPAIGN 25, 2023

THE AVON COMPANY
165 BROADWAY, NY, NY 10006

To place an order, call:



Pk of 10 59379-9



Single 59376-9

Brochure effective until _____

Find me at www.avon.com/repstore/ _____



Not applicable in
Puerto Rico or
the Caribbean.



See our commitment at
www.avon.com/animal-welfare

RETURN POLICY If you are not satisfied, return any item within 45 days. View Avon's full 45-Day Return Policy at avon.com/shipping-returns.