



**Spartan Pathways Travel**

**AUG. 31 - SEPT. 5, 2026**

# **SAN JUAN ISLANDS**

**Orbridge**

**WHALES AND WILDLIFE IN THE PACIFIC NORTHWEST**



## Spartan Pathways Travel

Dear Spartans,

Join us on an immersive journey through the San Juan Islands—an exclusive small-group sojourn offering extensive exploration of one of North America's most spectacular marine ecosystems.

From the rugged coastlines of remote islands to the tranquil beauty of old-growth forests, each day unfolds with extraordinary wildlife encounters, breathtaking landscapes and unique cultural discoveries. Come experience the raw beauty of the Pacific Northwest in a way that few travelers ever do.

Space is limited. With significant savings of more than \$1,000 per couple, we anticipate this tour will fill quickly. Reserve online at [msu.orbridge.com](https://msu.orbridge.com) or call (866) 639-0079.

Go Green,

Regina Cross  
Director, Spartan Pathways Travel Program  
MSU Alumni Office  
(888) 697-2863

For more information, contact Orbridge at (866) 639-0079 or you may call the MSU Alumni Office at (888) 697-2863.

We strongly suggest purchasing travel insurance. Travel insurance information will be sent to you with your email confirmation from the MSU Alumni Office.

**AUGUST 31 - SEPTEMBER 5, 2026**

**RESERVE YOUR SPACE TODAY**


Online: [msu.orbridge.com](https://msu.orbridge.com) • Phone: (866) 639-0079

Category	Standard Rate	Special Rate*
Double	\$6,399	\$5,895
Single	\$8,299	\$7,795
Optional Excursion		Rate Per Person
Kayaking		\$149

**DEPOSIT AMOUNT PER PERSON: \$850**

\*Special group rates; limited offer. All rates are per person in U.S. dollars based on double occupancy except where noted as Single. Single availability limited. Unless noted otherwise, airfare is not included. \*\*An exclusive Early Booking Bonus, Expedition Libraries are curated collections of useful resources and background reading tailored to this program. Place your deposit on or before the specified date, and one Expedition Library per room will be sent after receipt of final payment. Libraries may be purchased; call for details. Full Terms & Conditions at [terms.orbridge.com](https://terms.orbridge.com). Any payment to Orbridge, LLC constitutes your acceptance of the terms and conditions set out therein, including but not limited to the cancellation and refund terms.

CST#2098750-40 WST#602828994

 Orbridge takes seriously the responsibility to minimize our global environmental impact. Each year we plant 100,000 trees in U.S. State Forests with afforestation needs as an ongoing initiative among our evolving sustainability efforts. Learn more at [orbridge.com/going-green](https://orbridge.com/going-green).



# San Juan Islands | Itinerary Highlights *(subject to change)*

**Day 1** **ARRIVE IN SEATAC, WA | SAINT EDWARD STATE PARK (KENMORE)** Upon arrival to Seattle-Tacoma International Airport an Orbridge representative will be waiting to assist with your transfer to the property set amid the tranquil forests of Saint Edward State Park in Kenmore. Take time to unwind and explore the lodge's serene walking trails before gathering with fellow travel companions for a special welcome reception followed by dinner. Overnight: The Lodge at St. Edward Park (R,D)

**Day 2** **KENMORE | LA CONNER | SOUTHERN SAN JUAN ISLANDS CRUISING | FRIDAY HARBOR** Depart by private motor coach for the scenic drive to La Conner, a charming waterfront town on the Salish Sea. From there, embark upon a touring vessel destined for the San Juan archipelago highlighted with a wine tasting of the region's varietals and delicious crab lunch plus prime wildlife spotting opportunities. This region is known for Southern Resident orcas (which are salmon-hunting pods) and Transient orcas (which prey on seals and sea lions). Watching these magnificent creatures breach or glide through the water is an unforgettable experience. Arriving at Friday Harbor, check into your charming boutique hotel with time to refresh before gathering with the group for dinner at a local restaurant. The remainder of the evening is at leisure. Overnight: Earthbox Inn & Spa (B,L,D)

**Day 3** **SAN JUAN ISLAND | FRIDAY HARBOR** Following breakfast join a local guide for a land tour of San Juan Island including American Camp, Lime Kiln Point State Park and English Camp. In between be seated at Westcott Shellfish Company for a Tide Table Lunch—an interactive seafood experience featuring fresh oysters, clams and mussels harvested at the perfect tide level for optimal shellfish quality. Conclude the day with a lovely dinner at a local farm-to-table restaurant. Overnight: Earthbox Inn & Spa (B,L,D)

**Day 4** **SUCIA ISLAND | ORCAS ISLAND | FRIDAY HARBOR** Cruise to Orcas Island to walk through Moran State Park before driving to the summit of Mount Constitution for 360° views of the surrounding islands, the Cascade Mountains and even the Canadian Gulf Islands on clear days. Continue to Sucia Island for additional exploration and picnic lunch. Dinner will be at a local restaurant with a special presentation on the region's history, indigenous heritage and marine conservation efforts. Overnight: Earthbox Inn & Spa (B,L,D)



**Day 5** **FRIDAY HARBOR | ANACORTES | DECEPTION PASS | ANACORTES** This morning offers the opportunity to join an optional kayaking excursion (*additional fees apply*). Alternatively spend the morning learning about native traditions and history of the coast Salish people on the islands. Mid-morning take advantage of free time to explore Friday Harbor independently with opportunities to visit the Whale Museum and San Juan Island Historical Society. Then depart for a working farm on the island for an immersive, hands-on experience. Meet with local farmers and gain insight into sustainable agriculture, and be seated for a farm-to-table lunch. Later continue by boat to Anacortes on the north shore of Fidalgo Island in Puget Sound. Transfer to a private motor coach for the scenic journey to Deception Pass, one of Washington's most iconic natural landmarks. This evening gather together for a final dinner to celebrate your exciting adventures in the Pacific Northwest. Overnight: Majestic Inn & Spa (B,L,D)

**Day 6** **ANACORTES | DECEPTION PASS STATE PARK | SEATAC | DEPART SEATAC** After breakfast visit Deception Pass State Park—more than 4,000 acres of protected forests, beaches and scenic trails. The park offers plenty of opportunities to explore, hike and spot for wildlife including soaring bald eagles, harbor seals basking on rocky outcrops and even the occasional porpoise or whale gliding through the turbulent waters. Later transfer to Seattle-Tacoma International Airport for flights home.

(B = Breakfast, L = Lunch, D = Dinner, R = Reception)

## What's Included

- 5 nights accommodations in distinguished properties
- A special welcome reception, 5 breakfasts, 4 lunches (including a picnic-style lunch) and 5 dinners
- Full guiding services of an Orbridge Expedition Leader as well as expert local guides
- All excursions listed on the 6-day itinerary including admission, ferry and port fees
- Private deluxe motor coach with air conditioning and comfortable seating
- Luggage portage
- Gratuities to Orbridge Expedition Leader, local guides, drivers, porters and wait staff for included meals
- Group airport transfers for guests arriving and departing during the suggested times



**Activity Level:** This program offers a variety of activities, typically not strenuous for guests with average mobility, including skiff rides, hiking and kayaking. Walks and hikes are at a leisurely pace in order to see and learn as much as possible about the region. It's our expectation that guests are able to walk with good balance, and go up and down stairs easily without assistance.



**Orbridge**

## Orbridge Standard of Excellence

Orbridge understands travel today can be complicated. From cabin or room selection to airport transfers, dietary requests, or pre- or post-tour details—we are dedicated to making your journey seamless and special from the moment you leave home.

Our curated destinations—featuring outstanding properties and ships, meticulously crafted itineraries, and knowledgeable guides, travel directors and expedition leaders—offer life-changing experiences you'll never forget.

Our Guest Services team is staffed by well-traveled professionals who provide personalized attention, ensuring all your questions are answered and all the details of your trip are explained to you.

Our air partners can make flight arrangements for guests. In the event of flight delays and/or schedule changes, they will provide guests with personalized assistance. To book flight reservations with our air partners, contact (206) 319-5011 and select the option for your destination to discuss flight details with our air colleagues. Upon ticketing, a fee will be charged.

## Accommodations *(subject to change)*

### THE LODGE AT ST. EDWARD PARK

Operating as a seminary from 1931 to 1976, this beautifully restored retreat offers refined accommodations, an award-winning spa and an atmosphere of quiet sophistication.



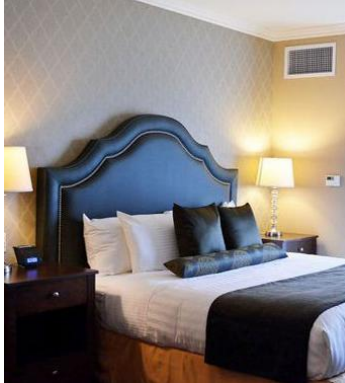
### EARTHBOX INN & SPA

Designed to embrace the laid-back spirit of the San Juan Islands, the hotel blends modern comforts with a coastal atmosphere. During leisure time take advantage of the heated indoor pool and spa or the dry sauna.



### MAJESTIC INN & SPA

This beautifully restored boutique hotel features elegant accommodations and a lovely rooftop terrace with stunning views of the San Juan Islands.





## Spartan Pathways Travel

MSU Alumni Office  
535 Chestnut Road  
East Lansing, MI 48824-2005

Michigan State University Alumni Office Spartan Pathways  
Disclaimer:

The Michigan State University Alumni Office (the MSU Alumni Office or MSUAO) and the Spartan Pathways Travel Program is not the Tour Operator. The MSUAO is not responsible for the changes of flight times, fare changes, dishonor of airline, hotel or motor coach transportation and car rental reservations, delays, losses, injuries, inconveniences, cessation of operations, airline or tour operator bankruptcies, acts of God, or any other event beyond our control. The MSUAO acts only as a sponsor with respect to the travel services, and it shall not be responsible for changes to flight times, fare changes, dishonor of airline, hotel or other reservations, injury, damage, loss of baggage, accidents or for the acts or defaults of any person or entity engaged in providing services to participants or in carrying out other arrangements of the tour. Further, the MSUAO shall not be responsible for losses or additional expenses of the participant due to sickness, weather, strike, civil unrest, acts of terrorism, pandemic, epidemic, quarantine, acts of God, governmental intervention, or other causes beyond its control. The MSUAO shall not be responsible for alteration in the itinerary as deemed necessary for carrying out the tour and the Tour Operator may substitute hotels of similar quality. The Tour Operator may postpone or cancel any tour prior to departure. The MSUAO or the Tour Operator may decline to accept or to retain any person as a member of the tour should such person's physical or mental health, actions or general deportment impede the operation of the tour or the rights or welfare of the other participants. No refund will be made for the unused portion of any tour. By embarking upon travel, the participant voluntarily assumes all risk involved in such travel, whether expected or unexpected. Participant is hereby warned of the above risks as well as possible travel industry force majeure, bankruptcies and medical and climatic disruptions, and the possibility participant may be unable to travel as scheduled because of personal emergency. Participant is advised to consider obtaining appropriate insurance coverage against these risks. Applicants for participation on this tour accept in full all the conditions set forth above. The MSUAO partners with other universities and alumni from other universities will be on many departures. While some of the Spartan Pathway's tours are exclusive to just MSU alumni, on many of the tours we partner with other universities/organizations that have travel programs. Space allotments for these tours are given to each university and after a guaranteed time allotted for reservations, available space is opened to all universities/organizations. Therefore, some departures may have universities with greater numbers of alumni on the tour than MSU.

MICHST-SJ/26

## SAN JUAN ISLANDS

AUGUST 31 - SEPTEMBER 5, 2026

Special Alumni Rate:

Save more than \$1,000 per couple

**30-DAY REFUND GUARANTEE**

**FREE EXPEDITION LIBRARY**  
AN EXCLUSIVE EARLY  
RESERVATION BONUS

Reserve by  
**December 12, 2025\*\***

PRSRT STD  
U.S. POSTAGE  
PAID  
PERMIT NO. 825  
SAN DIEGO, CA