



## GT-135, GT-155 & GT-165

GT-135 Capacity: 13,500-lbs @ 24" Load Center

GT-155 Capacity: 15,500-lbs @ 24" Load Center

GT-165 Capacity: 16,500-lbs @ 24" Load Center



**FAITH • VISION • WORK**

[www.taylorbigred.com](http://www.taylorbigred.com)

Featured truck is shown with optional equipment

## Standard Features: GT-135/155/165

- 130" Max Fork Height 2-Stage Mast with 103.4-in lowered height
- Hydraulic Cushioning Valve facilitates silent staging and reduces shock and vibration
- 80-in Pin/Shaft Type Carriage
- Carriage features (6) load and side thrust rollers (shimmable, sealed and canted)
- 2.5-in X 6-in X 48-in pin mounted Forks
- Deutz TD3.6 L4 74.3Hp Tier-4 Final diesel Engine
- Donaldson dry-type air cleaner w/safety element & restriction indicator
- 3-Speed Powershift Transmission
- Powertrain Protection System for engine and transmission
- HD planetary Drive Axle with Wet Disc Brakes
- Fully Boxed Welded Steer Axle (single hydraulic cylinder design with heavy-duty links from the cylinder ram directly to tapered roller bearing mounted spindles)
- 8.25 x 15 x 14 PR Pneumatic Dual Drive tires
- 8.25 x 15 x 14 PR Pneumatic Steer tires

## Chassis

- Heavy Duty All-welded Steel frame
- Integral Counterweight
- Lockable Fuel Cap
- Easy lift steel gull-wing hood exposes drive train for ease of maintenance (Lockable)
- All steel hinged floorboard that can be removed with no tools
- Full rubber floormat for dampening of vibration and noise
- All hardware is oil impregnated zinc dichromate to prevent rust
- Upright/Mast is pin mounted to the chassis (not trunnion mounted to axle)
- Steps have a non-skid surface with low heights for ease of entry (1st step at 10 1/2")

## Cab

- Isolation mounted open operator base with overhead guard (includes dual brake pedal, dome light, wide angle mirrors, handrails and full rubber black floor mats).
- Adjustable Black Vinyl Covered Mechanical Suspension Seat (Seat has 6" fore and aft travel, adjustable back rest, 2.4" vertical travel, and lumbar support. Also has Operator weight range adjustability to 370 lbs.)
- Column mounted directional control with no linkage - FWD/REV selected by moving lever up and down
- Ergonomic hydraulic control levers
- Operator Restraint System (Orange, anti-cinch seat belt)
- Dual operator presence systems will not allow transmission to engage and will not allow hydraulics to engage unless operator is in the seat.
- Interactive LCD Dash Display with audible warnings for low fuel, transaxle oil temperature, parking brake and seat belt. Visual displays for transmission temperature, engine oil pressure, alternator, diesel glow plug, fuel system, seat belt reminders, turn signals, gear selected, maintenance timer, fuel levers, and travel speeds. (Includes Fault Code Storage)
- Two pedal hydraulic inch brake provides excellent control and comfort
- Infinitely adjustable steering column that pivots 30° above knee
- Ratchet style park brake disengages transmission when applied

## Electrical

- 24-volt electrical system (12 volt when optioned to LPG)
- Heavy-duty batteries
- Utilizes all environmentally sealed wire connectors
- Key-type electronics switch with key start
- Electric horn
- Keyswitch-actuated amber strobe light
- Reverse actuated warning alarm

## Vehicle Information Package

- Operator's Guide
- Maintenance and Service Documentation
- Safety Check Manual and Video



Isolation Mounted Open Operator Base with Overhead Guard



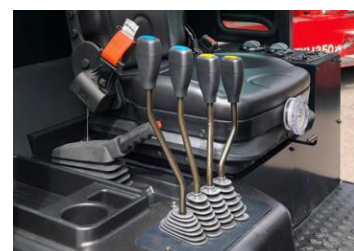
Adjustable Black Vinyl Mechanical Suspension Seat. Adjustable Weight Range to 370 lbs



Donaldson Air Cleaner with Safety Element



Two Pedal Hydraulic Inching & Brake and Moulded Rubber Floormat



Hydraulic Control Levers and Ratchet Style Hand Brake



Heavy Duty Steer Axle Mounted on Rubber Isolators. Toughest Steer Axle Profile Available



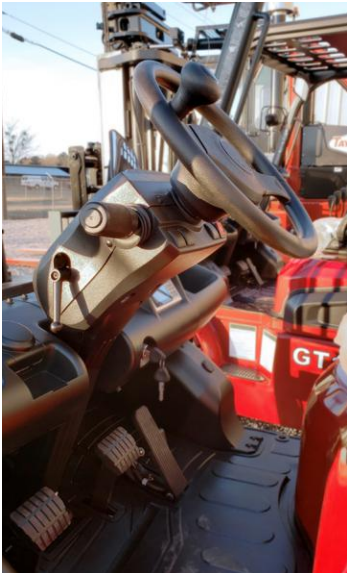
Optional Fully Enclosed & Partial Cabs Available

## Ergonomics

- 14" two spoke steering wheel with 4.5 turns lock-to-lock
- Large electronic directional control with no linkage- FWD/REV selected by moving lever up and down
- Large oversized right lever operates turn signals and headlights
- Large welded grab bar handle for solid secure mount
- Ergonomic hydraulic control levers angled at 15 degrees back for precise driver operation
- Hood mounted ratchet style park brake disengages transmission when applied

## Uprights & Carriages

- Nested I-beam upright design
- Canted load rollers
- Silent staging upright cylinders allows no racking between stages
- Negative drop rails provide easy and inexpensive servicing of carriage
- Spherical bushings on both ends of the tilt cylinders
- 6-roller carriages
- External side thrust rollers
- Heavy duty roller chain that has 4 x 4 lacing with 1" pitch
- Fully greaseable pivot points



Adjustable Steering Column  
Pivots 30 Degrees



Durable Nested I-beam Design  
Yields Optimal Visibility

## Overhead Guard

- One piece provides strength and durability
- Longitudinal overhead bars for better sightline when load is up
- Low cowl height for greater visibility when load is in lowered position
- Two forward mounted 12V work lights with protective guards are standard
- Rear combination lights (brake, tail and back-up) are standard

## Steer Axle

- Heavy duty steer axle incorporates integral double steer cylinder
- Single piece steer knuckles supported by tapered roller bearings which provide high durability and low maintenance
- Full hydrostatic operation reduces mechanical links and eliminates kick back
- Mounted on rubber isolator
- Boots on steer cylinder piston rod

## Available Options

- Fully featured cabs
- Partial cabs
- AM/FM radio / CD player / Bluetooth option with cab
- Air conditioning option with cab (diesel engine only)
- Side shifters
- Fork positioners
- LED Lights
- Fingertip controls (mini-levers)
- Accumulators
- Swing-down LPG tank brackets
- Lifting eyes for stevedoring applications

## NEED SPECIAL OPTIONS?

Just ask one of our Taylor Specialist.

Taylor Machine Works was founded on the promise of meeting our customer's needs. The sign on our original facility in 1927 stated "We Engineer and Build What You Need" and those ideals still ring true today! From multiple Mast, Carriage and Fork configurations to Special Attachments that are unique to your business, we will step forward to meet the challenge. With hundreds of options readily available for our trucks, and the ability to custom engineer any other need that arises, Taylor Machine Works is here ready to serve.



Weather Sealed High Visibility LCD Diagnostic Display  
Includes Fault Code Storage and is Password Protected

Support Taylor Lift-trucks Worldwide

# Sudden Service, Inc.



## 24/7 Service & Support

No-one can match our record for service and reliability.

Unbeatable customer service, backed by over 88 years of customer satisfaction. [www.suddenserviceinc.com](http://www.suddenserviceinc.com)

## Your #1 Source for Genuine Taylor Parts

Our customers deserve to know they can always depend on us for service and support 24/7. Because of that expectation, we have factory trained service techs on the ground nationwide. Over 200 service technicians receive continuing education (hands-on) at the factory each year. Your service techs are supported by the best OEM parts and distribution facility in the world. With \$60,000,000 dollars worth of parts distributed across our factory stores and millions more on the shelves at our dealers. We pride ourselves on providing you with unmatched Service & Support by a Worldwide Team of dedicated specialists.



**Have You Considered Leasing?  
Or Custom Fleet Management?**



Our goal is to structure a financial product that improves your profit with reduced operating cost by increasing up-time and offering a wide range of financial solutions to fit the specific needs of your business. Taylor Leasing offers over 100 different financial structures within the main product categories of:

- **Operating Lease** - A financial choice which provides use of equipment for extended period of time with a low monthly operating cost.
- **Finance Lease** - This type of lease offers flexibility in payments with equipment ownership options at the end of the lease term.
- **Fleet Management** - Your needs and goals are always evaluated carefully before providing you with a custom fleet leasing solution. We only include fleet management services (including maintenance solutions detailed below) that help your fleet function more efficiently.
- **Fleet Maintenance** - We offer tailored fleet maintenance solutions, that range from periodic service and emergency repairs to full on site personnel. Taylor Fleet Maintenance Programs assist in budgeting, while helping to eliminate unpredictable expenses and allowing you to focus on your actual business.

For more information Phone: (662) 773-3421 Ext. 400 - Fax: (662) 773-9146 or E-mail Stephen Arnett [sarnett@taylorbigred.com](mailto:sarnett@taylorbigred.com)

[www.taylorleasingandrental.com](http://www.taylorleasingandrental.com)