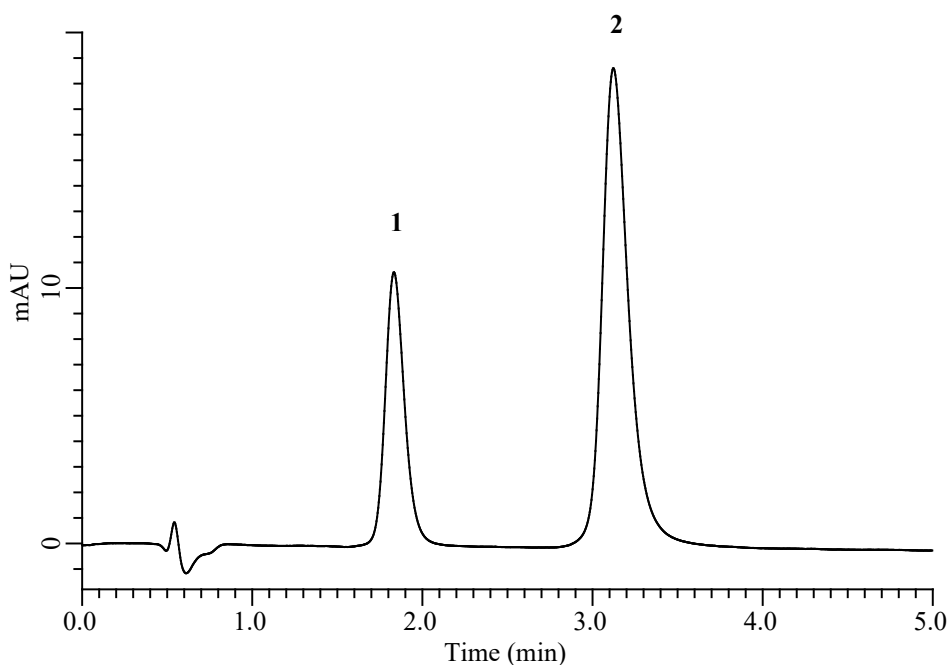


InertSearch for LC

Inertsil Applications

Analysis of Metformin

Data No. LB804- 1054



Conditions

Column : Inertsil CX (GL Sciences Inc.)
(5 μ m, 50 x 4.6 mm I.D.)

Column Cat. No. : 5020-07142

Eluent : A) CH₃CN
B) 100 mM K₂HPO₄ in H₂O (pH 7.0, H₃PO₄)
A/B = 30/70, v/v

Flow Rate : 1.2 mL/min

Col. Temp. : 30 °C

Detection : UV 255 nm

Injection Vol. : 10 μ L

Sample : Standard in 0.025 M sodium chloride

Analyte:

1. Sitagliptin	72 mg/L
2. Metformin	55 mg/L