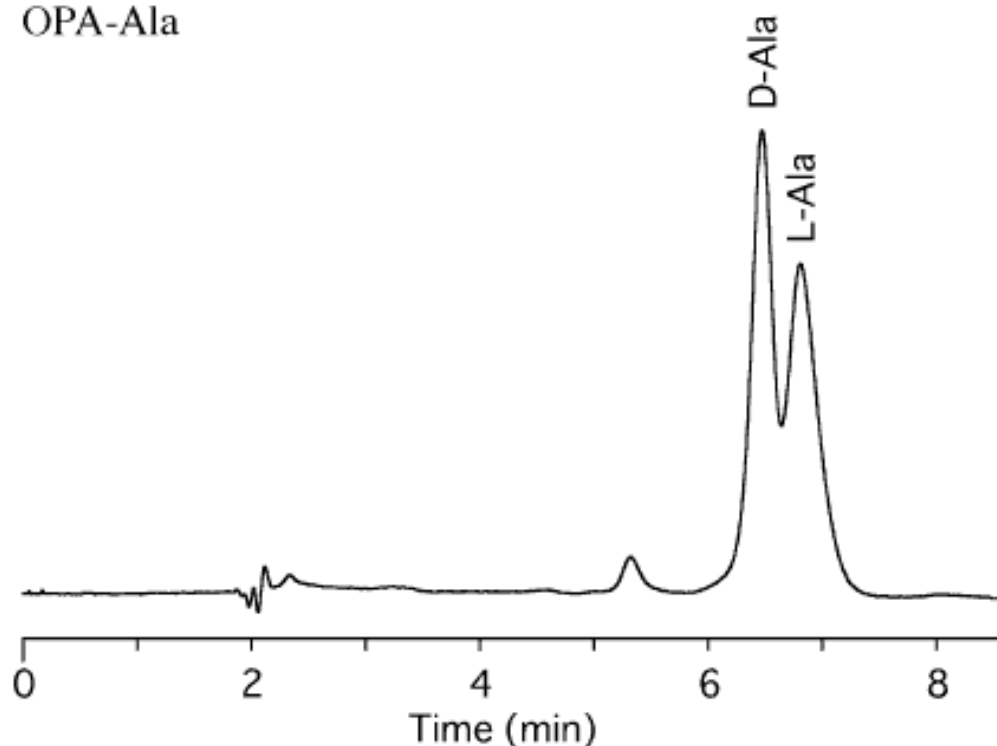


Analysis of OPA-Alanine (Ala)

Data No. LA380-0000

OPA-Ala



Column : Bioptic AV-1
5 μ m
150 \times 4.6 mmI.D.

Solutes : 1. OPA-D-Ala
2. OPA-L-Ala

Column Cat. No. : 5020-02511

Eluent : Methanol /50mM phosphate buffer (pH6.6) = 2 / 98 (w / w)

Flow rate : 1.0 mL/min.

Col. Temp. : 40°C

Detection : UV 340nm

Injection Vol. : 5 μ L

Sample : 10 μ L Amino acid sol.(10mg/mL 50%MeOH)+ 40 μ L
OPA sol.
L 2-mercaptoethanol in 10mL borate buffer
pH9.2)mixing