

"One of the most stunning wedding venues in the world"  
VOGUE UK







Butley Priory is an enchanting wedding venue in the Suffolk countryside, where you can gather family and friends for a wonderful few days to celebrate your wedding.

Three day celebrations are our speciality, creating memorable experiences in different locations, from the minute your guests arrive onto the Estate.

A drinks party in the Farmhouse to welcome your resident guests, a sensational wedding day inside the Priory, and a delicious farewell brunch the following day.

Stay two or three nights across four characterful properties, with a focus on sumptuous food and delectable wines in a wild, rural setting that will delight your guests. Comfort and luxury guaranteed...



The venue, Butley Priory	sleeps 7-11
Butley Priory Cottage	sleeps 6
Butley Abbey Farmhouse	sleeps 24
Paddy's Cottage	sleeps 6





## YOUR WEDDING SUITE

Arrive to a warm welcome from our team and instantly, you'll feel at home in the Priory.

Your wedding suite awaits, complete with four poster bed, roll-top bath and walk-in shower, tastefully designed with the pretty pastel colours of an English country garden.

Light, airy and spacious, the Priory is a haven of calm, with four beautiful bedrooms, all with exceptional views of the surrounding woodland.

With character and charm in abundance, the Priory is usually reserved for key members of the wedding party, to enjoy a relaxed morning of pampering ahead of an exciting weekend of celebration.









## YOUR CIVIL CEREMONY

Butley Priory is licensed to host civil ceremonies and civil partnerships for up to 95 guests.

A choice of two ceremony rooms; the Great Hall (seats 95) or for smaller ceremonies, the Drawing room (seats 40). Both feature pale stone vaulted ceilings, pillars and columns. Dreamy, light-filled spaces in which to exchange your vows.



In fine weather, gather your loved ones and say 'I do' in the peaceful surroundings of the South Garden.

After your ceremony, rejoin your guests to the sounds of the church bell announcing your arrival under a shower of confetti.

Refreshing drinks & tempting canapés are served before heading into the Great Hall or Marquee for dinner...

















## YOUR CHURCH CEREMONY

For a traditional religious ceremony, the beautiful 16th century St. John the Baptist church in Butley sits less than a mile from the Priory.

Surrounded by open fields along a quiet country lane, this pretty little church welcomes couples from near and far.

More beautiful Suffolk churches can be found at nearby Orford, Sudbourne and Woodbridge.



“We loved having exclusive hire of the venue for the weekend staying with 35 of our family and friends. Such beautifully decorated accommodation which everyone spoke so highly of - and the Priory bridal suite is just to die for, I wish I could wake up there every day!!”

Tom & Laura

















## YOUR RECEPTION

Entertain up to 80 guests with a memorable three course dinner, in the beautiful surroundings of the Great Hall.

The tables are set, the candles lit and we're ready to welcome your guests for a delicious, personalised menu you've designed in collaboration with our chef.

Seasonal and local produce lies at the heart of everything we do, and Suffolk has an excellent reputation for yielding the finest small producers.

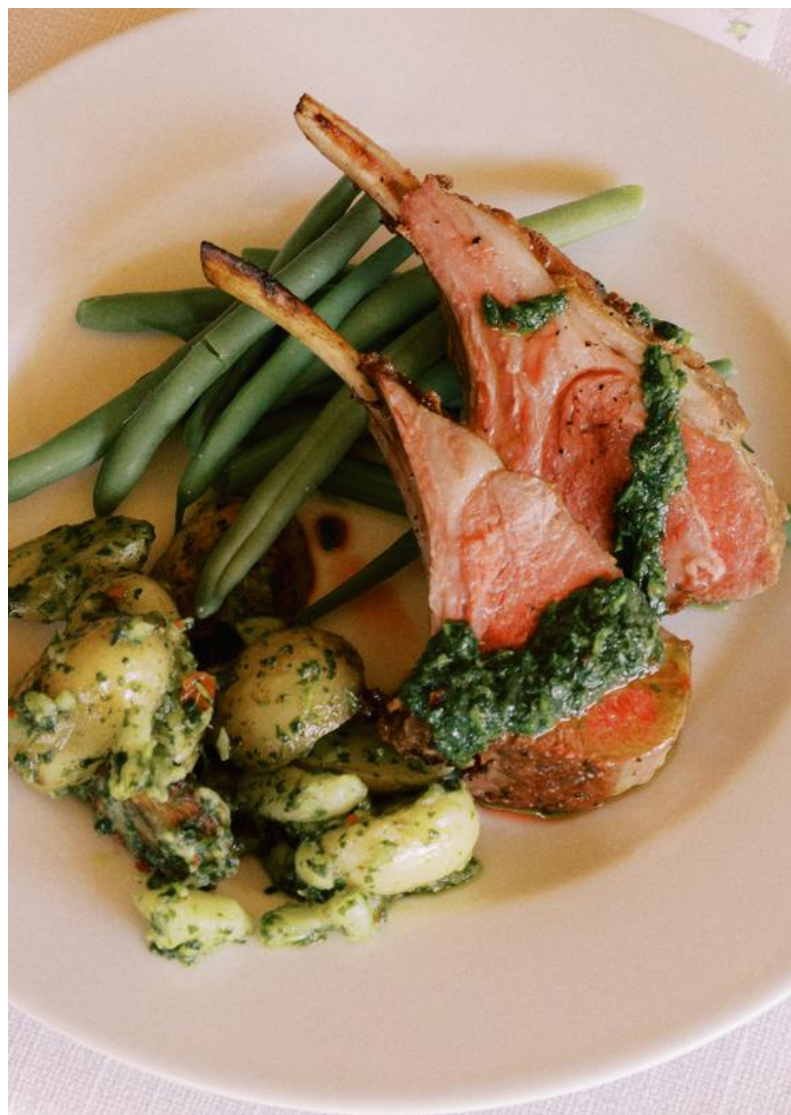
Receive expert guidance every step of the way, to select delightful canapés, and create the perfect menu for your wedding.



“In the lead-up to the wedding, the team's attention to detail was amazing. They all invested so much time and effort, ensuring that every single detail was thought through, and it completely paid off. The venue itself is absolutely stunning, you're in your own little romantic world surrounded by beautiful forests”

Sancha & Manveer









## WEDDING FEASTING

Catering is provided by our partner chef, Peter Harrison, who has an excellent reputation in Suffolk and we're confident you'll love his cooking.

We don't have set menus. Instead, with Peter's help, you'll be invited to design a personalised menu. This approach has been a huge hit with couples who are looking to have an individual and bespoke menu.

We do have an 'inspiration menu' to help you get started and we'll ask you for some suggestions to help build a picture of the type of foods you love.

Peter will provide suggestions and you'll tweak and change until you feel the menu is just perfect. You'll then be invited to attend a tasting where you can try all the dishes together, as well as some delicious canapés.









## YOUR SECRET BAR

Tucked behind a panelled wall, hides our intriguing secret bar. Historically, it's where the Augustinian monks dispensed alms and hospitality to Pilgrims on their travels.

Featuring an extensive collection of tasty cocktails, soft sips and mindful mixes, the Butley Priory bar has earned a reputation in its own right.

Quite possibly the best room in the house.



“Thanks to you and the team for our amazing day, we had a wonderful weekend and were sad to leave on Sunday! Already thinking about the 10 year anniversary party. Everyone said how great the food was, and that it's the best wedding they've ever been to!”

Ally & Camilla









## YOUR MARQUEE WEDDING

For a limited number of weekends per year, Butley Priory opens its house and gardens to larger wedding groups with a dedicated lawn for a marquee or tipi.

Enjoy an elegant feast under canvas, set against the ancient Priory facade. As the evening draws in, return to the Priory for your evening reception, you'll enjoy an unforgettable party in the Great Hall, with your very own secret bar.

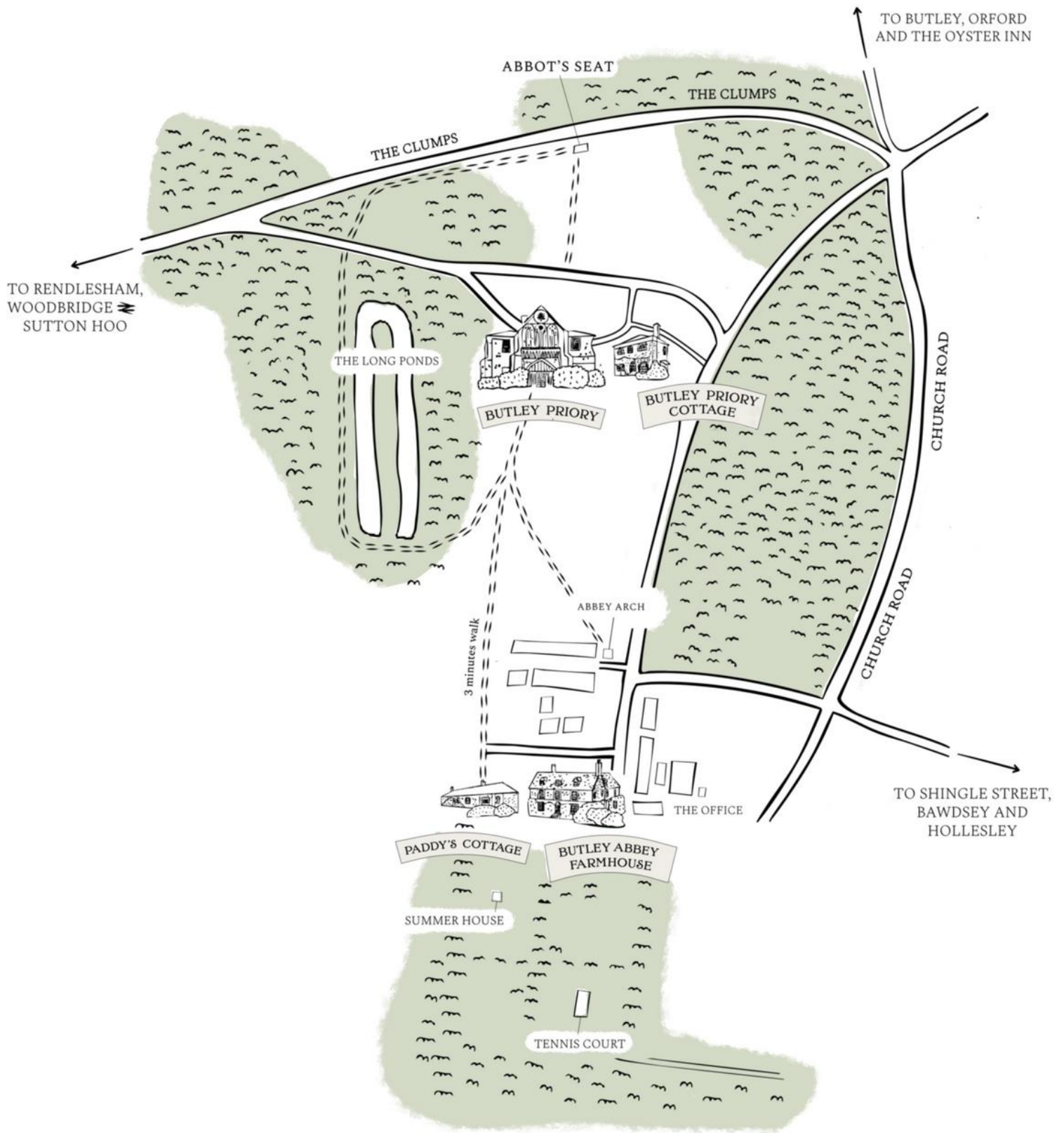
...or continue the celebrations under Suffolk skies by including a dance floor and bar area within your marquee.

We'll introduce you to the best Suffolk marquee providers who, with their years of experience, will guide you to all that's required for a smooth and seamless marquee wedding.

















## BUTLEY ABBEY FARMHOUSE

Just a short walk from the Priory, our luxury Farmhouse sleeps 24 guests in twelve bedrooms.

Its fine Georgian facade overlooks a large garden, tennis court and croquet lawn, with meadow and woods beyond. It has three sitting rooms, all with open fires and a large formal dining room.

Delightful and spacious, with a terrace and barbecue. The perfect place to gather your guests for welcome drinks, the evening before your wedding.



What a stunning property! We loved the lounge areas with open fires to sit and chat. The bedrooms are all tastefully furnished with enough bathrooms for everyone. The gardens are gorgeous, big enough to walk around with the dogs and we played a bit of tennis whilst there too!

Jane Ballentyne









## BUTLEY PRIORY COTTAGE

An 18th century, charming and secluded flint cottage, once used as a stable for the Priory and later as a summerhouse, set in the Priory Gardens.

Butley Priory Cottage features two double bedrooms, two bathrooms, an open plan kitchen/dining room with a double sofa bed in the sitting room, comfortably sleeping up to 6 guests.

Catch the evening sun in the pretty courtyard garden while listening out for the woodpeckers in the nearby woods.



What an amazing find! Idyllic and very cute cottage in stunning surroundings. Perfect for exploring the beautiful Suffolk countryside. We'll be back for longer next time

Matthew









## PADDY'S COTTAGE

Refurbished with great care and attention to detail, Paddy's Cottage boasts beautiful furnishings and luxurious interiors, offering stunning views of the surrounding countryside.

There is a ground-floor bedroom with an accessible wet room and a second bedroom with its own en-suite bathroom.

Accommodating up to 6 guests, Paddy's Cottage also features an open-plan kitchen/dining area, and a double sofa bed in the sitting room.

There's a small patio area with wicker table and chairs close to the kitchen, perfect for al fresco dining and catching fantastic Suffolk sunsets.



Wonderful cottage in the most amazing Estate setting. Really good size and has a lovely garden and terrace which gets the evening sun. The interiors are beautiful and high quality and the kitchen is well equipped.

Sabrina









If you've enjoyed reading about Butley Priory and would like to arrange a visit, we'd love to welcome you.

[BOOK A VIEWING](#)



[info@butleypriory.co.uk](mailto:info@butleypriory.co.uk) [www.butleypriory.co.uk](http://www.butleypriory.co.uk)

Butley Priory, The Clumps, Woodbridge, Suffolk IP12 3NR

Call: [+44 \(0\)1394 450046](tel:+44(0)1394450046)

WhatsApp: [+44 \(0\)7458 078201](tel:+44(0)7458078201)



@butleypriory





“Wow! Where to start? Thank you for everything in the lead up to the wedding and on the weekend itself. We had the most amazing few days and are so grateful for all you and your team did to make it happen”

Fiona & Martin

