

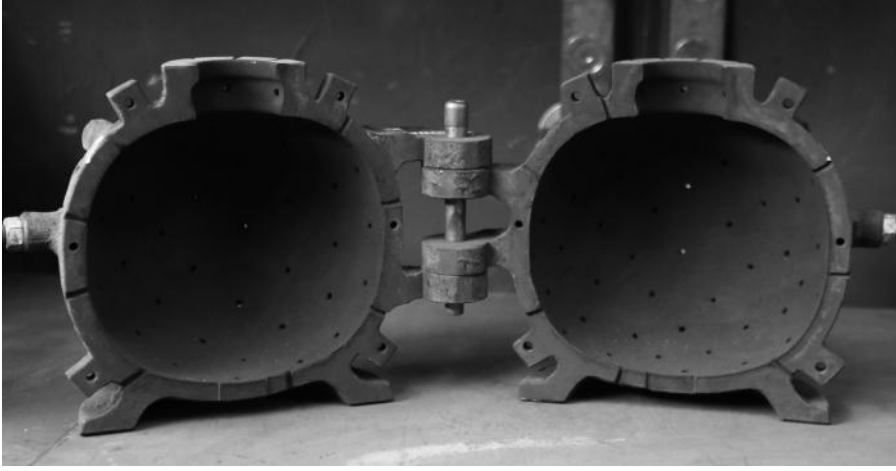


MUG  
LIGHTING

MUGAZINE 02



Headquartered in Milan, MUG leverages the finest Italian craftsmanship to ensure optimal quality and appearance of its products. The focus on balanced proportions and the luminous effect of its lamps are the core of MUG's design process while the refinement of the materials define the quality standard of the pieces.



# MOUTH-BLOWN GLASS

COLLECTIONS

2025

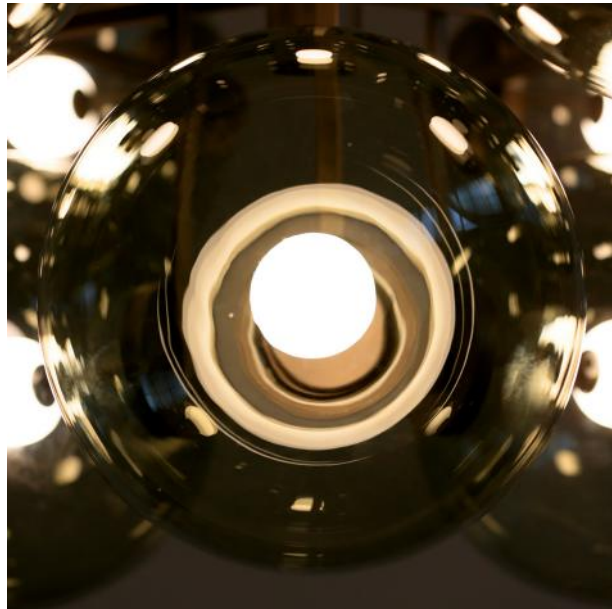




The 2025 collections are crafted in hand-blown Murano glass, celebrating Venetian glassmaking tradition and exploring a decorative language with multiple compositions, from single pendants to large chandeliers, enhancing spaces with refined elegance and minimal approach. These collections express a balance between heritage and contemporary design, where craftsmanship and simplicity shape the character of light.



Jasmine





As a celebration of Venetian artistry, the Jasmine Collection embodies the craftsmanship and timeless beauty of Murano glass. This collection, composed of six distinct lighting pieces—from a single pendant to grand chandeliers of up to eighteen shades—transforms light into an expression of elegance and refinement. With its harmonious blend of tradition and modernity, the Jasmine Collection embodies the perfect balance between heritage and innovation, making it a tribute to an unparalleled sense of artistry and sophistication. Each spherical lampshade is meticulously mouth-blown by master glassmakers, upholding centuries-old traditions. The glass diffuser is available in two versions: a plain transparent color, which emphasizes the clarity and form of the central luminous piece, and a variant made using the distinctive Sfumato technique— an ancient Venetian method where two tones gradually blend within the glass, creating a mesmerizing interplay of light and depth. The result is a collection where each shade possesses its own unique character.

MOUTH-BLOWN GLASS

2025 COLLECTION











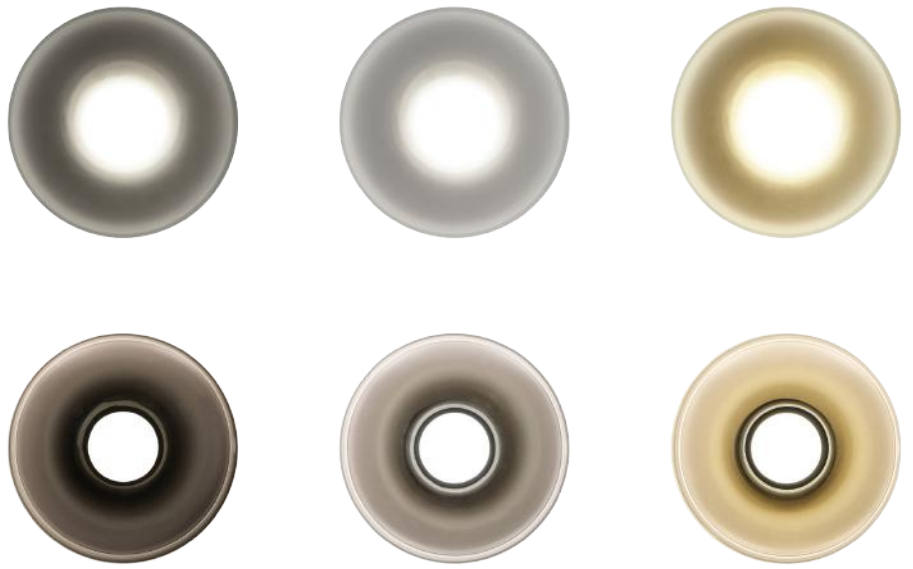






# Lounge





Minimalist in form yet rich in craftsmanship, the Lounge Collection embodies a refined aesthetic through pure geometric shapes and premium materials. With its sculptural elegance and meticulous selection of materials, the Lounge Collection brings a timeless design through its exploration of the interplay between form, materiality, and light. Each piece features a mouth-blown Murano glass diffuser, shaped into a distinctive flattened disc, creating a soft, ambient glow. The collection offers a variety of sophisticated material finishes and colors, with each piece emphasizing a bold, architectural presence.

MOUTH-BLOWN GLASS

2025 COLLECTION







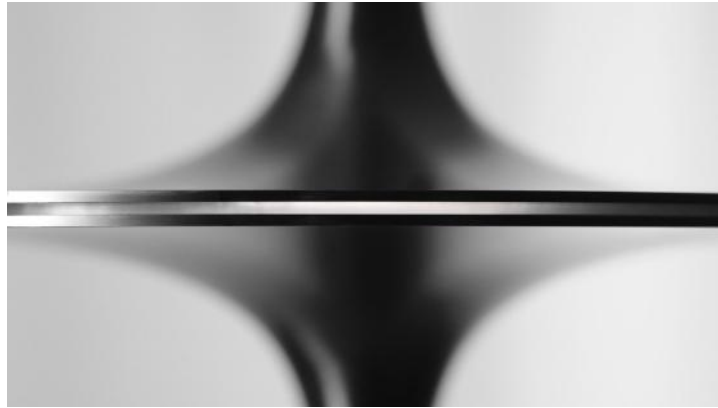




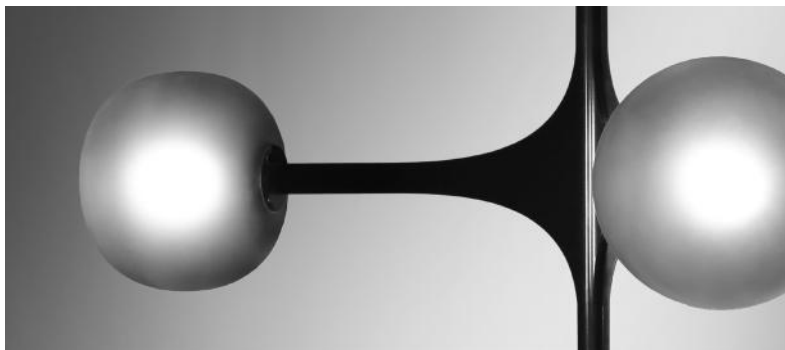
# NOVELTIES

2026 COLLECTIONS



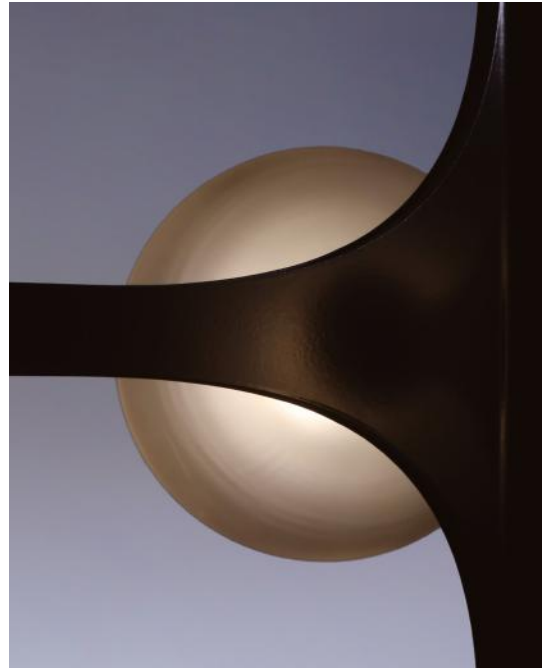


The new collections share a focus on clean geometries and a thoughtful interplay of materials, where each element is reduced to its most deliberate expression. Surfaces and structures are designed to interact with light in different ways—through contrast, reflection, or translucency—creating depth. Details such as layered diffusers and subtle openings become defining features rather than decorative additions. The overall effect is a coherent group of lighting pieces that combine clarity of form with a quiet, balanced presence in space.



Charlotte





A suspended lamp with an essential structure and neutral frosted glass that diffuses a soft, even, glare-free light. The cable connects directly into one of the diffusers, creating a clean and distinctive detail. A minimal design with an elegant presence, combining geometric rigor with a soft, inviting atmosphere. Charlotte's sophistication lies in its visual simplicity achieved by the clean pairing of materials: neutral frosted glass and enticing metal finishes. The structure is created by aligning three folded metal sheets, which are crowned by almost spherical globes illuminated at their center, allowing the light to appear as if hovering within, unattached and weightless inside the glass.

NOVELTIES

2026 COLLECTION



DARK BROWN



BLACK NICKEL



BRONZE













Celine

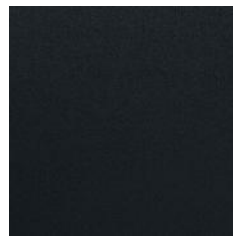




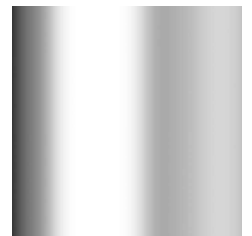
The Celine chandeliers are defined by a contrast of finishes and precious reflections. The chrome-finished adds brightness and a refined, contemporary touch. A double-glass diffuser ensures smooth and continuous light distribution. The contrast between the dark frame and the mirrored chrome creates a bold yet balanced visual presence.

NOVELTIES

2026 COLLECTION



MATT BLACK



CHROMO

















Slim





Slim is a sculptural pendant defined by a refined silhouette, clean proportions, and a contemporary character. The collection is rooted in balance, relying on essential forms to express a timeless and quiet elegance. Each piece is composed of two specular halves—gently flared discs that taper into a continuous, fluid curve. Between them, a precise line of light emerges, subtly separating the form while casting a soft, diffused glow downward. The Slim collection is available in a range of refined metal finishes, from neutral tones to more luminous hues.

NOVELTIES

2026 COLLECTION



BRASS



ALLUMINIUM



BLACK NICKEL



BRONZE













Product Design and Art Direction  
Corrado Dotti Design & Architecture ©2026

Photography  
Gino Menozzi







# MUG

Via Luigi Sala, 12  
20143 Milano (MI) - ITALY  
(+39) 0221103416  
[www.mugmilano.com](http://www.mugmilano.com)  
[info@mugmilano.com](mailto:info@mugmilano.com)

