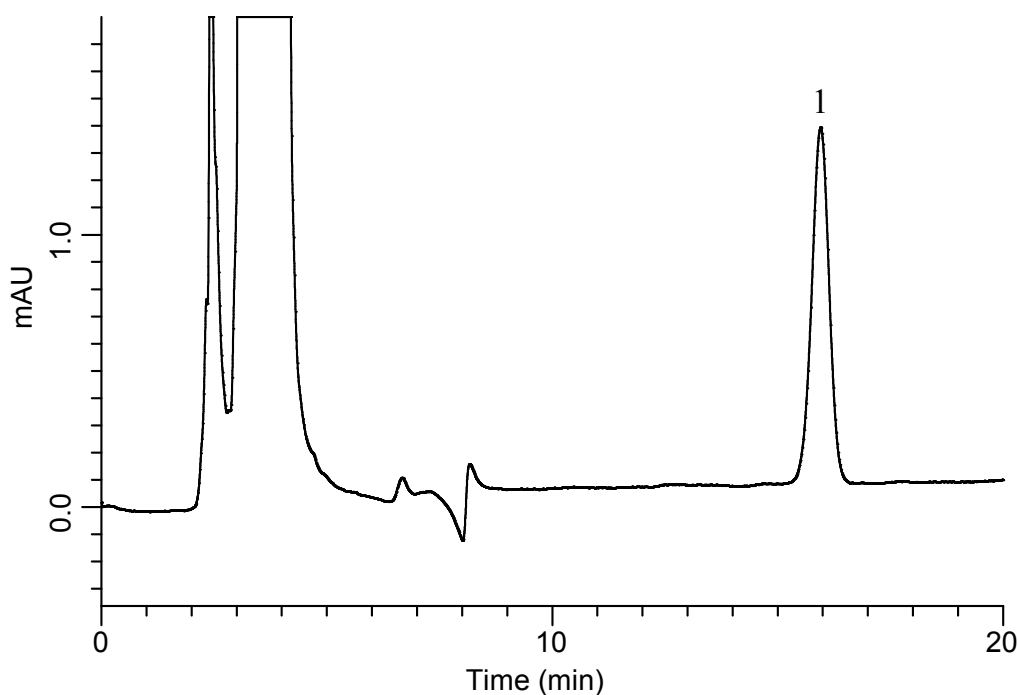


Analysis of Ginsenoside Rb1

(Under the Condition of the Japanese Pharmacopoeia 17th edition)

Data No. LB478-0952



Conditions

System : GL7700 HPLC system
Column : Inertsil Amide
(5 μ m, 250 x 4.6 mm I.D.)
Column Cat. No. : 5020-88632
Eluent : A) CH₃CN
B) H₂O
C) H₃PO₄
A/B = 400/100/1, v/v/v
Flow Rate : 1.0 mL/min
Col. Temp. : 60 °C
Detection : UV 203 nm (PD7752 PDA Detector)
Injection Vol. : 20 μ L
Sample : Standard

Analyte:

1. Ginsenoside Rb1 20 mg/L
(Dissolved in CH₃OH)

Theoretical plate number : 8,213 (\geq 5,000)
Tailing factor : 0.99 (\leq 1.5)
RSD of the area (%) (n = 6) : 0.34 (\leq 1.5)