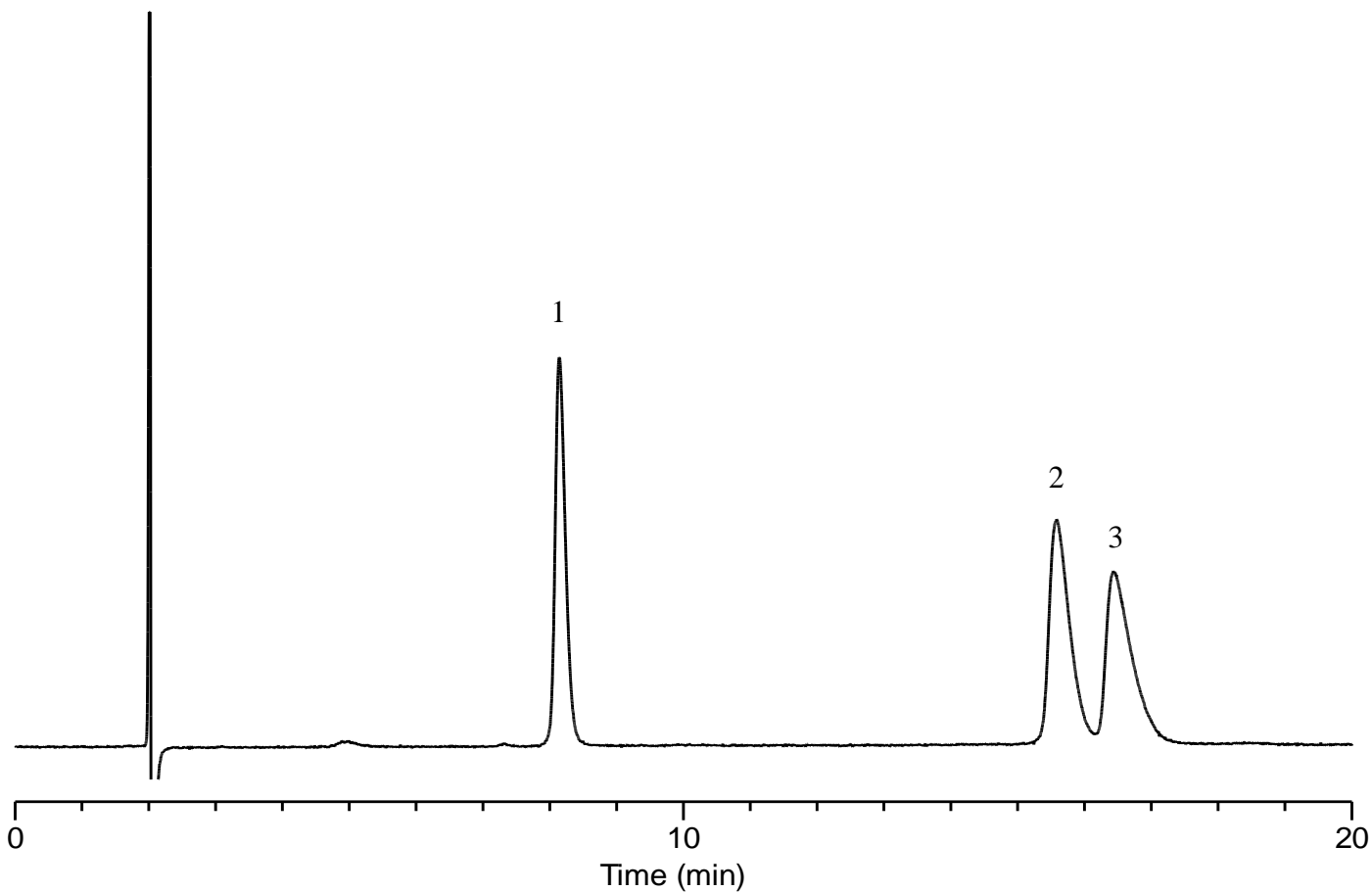


# InertSearch™ for LC

Inertsil™ Applications

## Analysis of Methylhippuric acids

Data No. LB602-0806



### Conditions

**Column** : InertSustain Cyano HP (3  $\mu$  m, 150 x 4.6 mm I.D.)

**Column Cat. No.** : 5020-89475

**Eluent** : A) CH<sub>3</sub>CN  
B) 0.1% HCOOH in H<sub>2</sub>O  
A/B = 1/99, v/v

**Flow rate** : 1.0 mL/min

**Col. Temp.** : 40 °C

**Detection** : UV 220 nm

**Injection Vol.** : 1  $\mu$  L

**Sample** : Standard

### Analyte:

1. <i>o</i> -Methylhippuric acid	100 mg/L
2. <i>p</i> -Methylhippuric acid	100 mg/L
3. <i>m</i> -Methylhippuric acid	100 mg/L