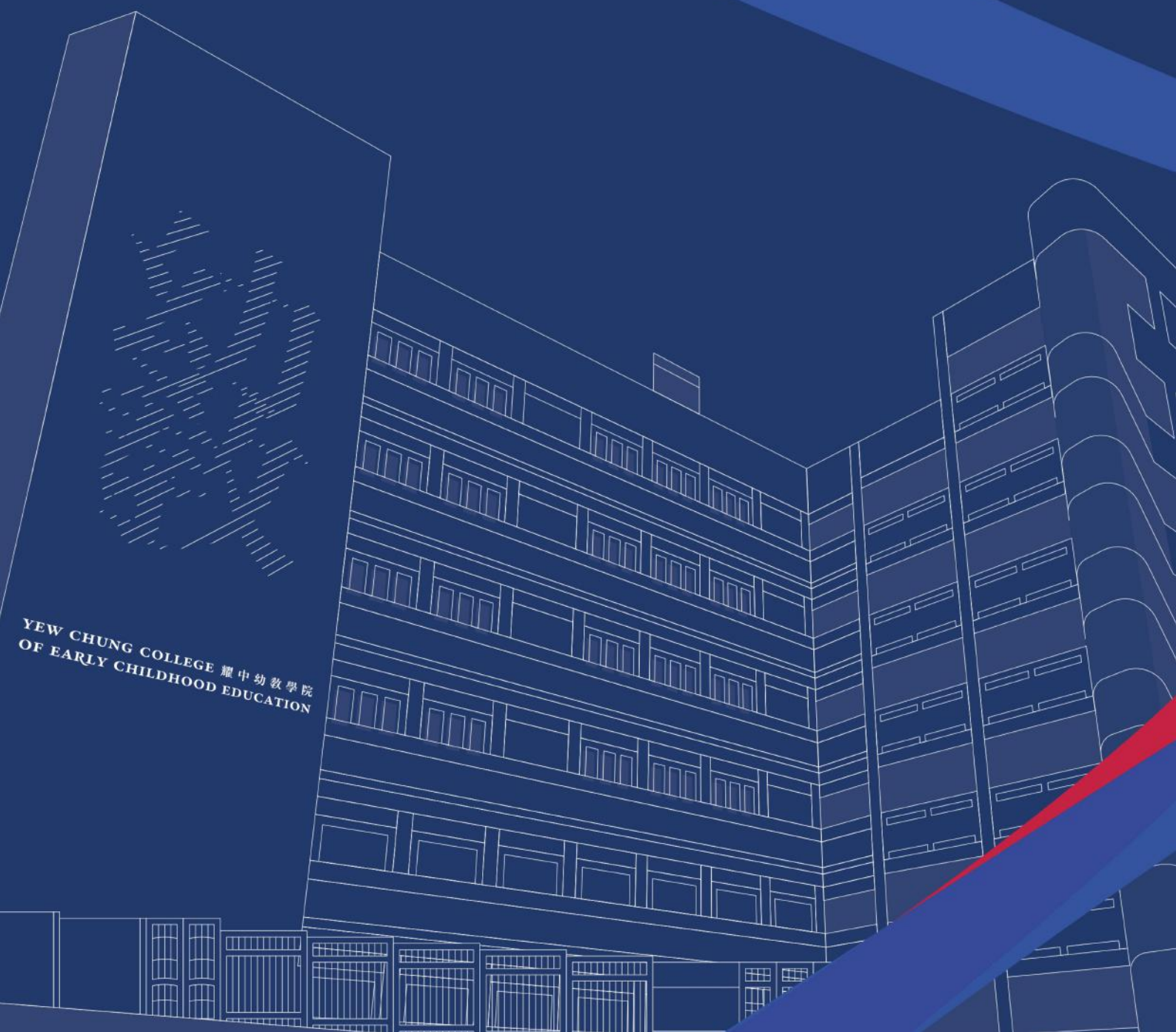


YEW CHUNG COLLEGE
OF EARLY CHILDHOOD
EDUCATION

耀中幼教學院

Postgraduate Programmes

研究生課程



YEW CHUNG COLLEGE 耀中幼教學院
OF EARLY CHILDHOOD EDUCATION

Contents | 目錄

Why YCCECE 為何選擇耀中幼教學院?	3
About Yew Chung 關於耀中	4
Our People 我們的團隊	5-7
Yew Chung Approach to Early Childhood Education 耀中幼教教學法	8
Master of Education (MEd) 教育學碩士	9-10
Postgraduate Diploma in Education (Early Childhood Education) (PDGE) 學位教師教育深造文憑 (幼兒教育)	11-12
Student Life at YCCECE 耀中幼教學院的學生生活	13-14
Admission and Scholarship information 入學申請及獎學金	15-17

From **Curiosity** to **Mastery**:
Education for Every Chapter of Life
Baby to Postgraduate

從童心到慧心
教育成就人生每一篇章：

從嬰兒到研究生全學段教育

Why YCCECE? 為何選擇耀中幼教學院？

First & Only Private Higher Education Institution in Hong Kong offering **MEd** and **PGDE (ECE)** programmes and home to the largest Early Childhood Education faculty and student body
全港首間及唯一自資院校推出**教育學碩士及學位教師教育深造文憑(幼兒教育)**課程並擁有最大幼兒教育專家團隊和學生數目

Only **PGDE (ECE)** programme in Hong Kong awarding with 4 professional licences and enabling graduates to be licensed as Special Child Care Workers
全港唯一**學位教師教育深造文憑(幼兒教育)**課程頒授4個專業資格，包括特殊幼兒教育工作員

Leverage **90+ years** of history and strong support from the Yew Chung Yew Wah Network
逾**90年**幼教歷史傳承耀中耀華強大網絡

In 2024, the College proudly attained institutional accreditation for its postgraduate programmes at Qualifications Framework (QF) Level 6 from the Hong Kong Council for Accreditation of Academic and Vocational Qualifications (HKCAAVQ). This achievement paves the way for the introduction of new degrees in the 2025/26 Academic Year.

This milestone not only enriches Yew Chung's 93-year legacy of educational excellence but also establishes YCCECE as the first private institution in Hong Kong to offer the Postgraduate Diploma in Education (Early Childhood Education) and Master of Education (MEd) programmes.

於2024年，學院已成功通過香港學術及職業資歷評審局對開辦資歷架構第六級的機構評審，讓學院可以於2025/26學年推出全新的研究生課程。

這不僅是耀中93年歷史中的一個重要里程碑，也是香港高等教育發展的一個關鍵時刻，因為耀中幼教學院將成為全港首間提供學位教師教育深造文憑和碩士學位課程的私營機構，標誌著學院在教育領域的進一步突破。

1932

First Yew Chung School and Kindergarten opened.
香港創辦第一所耀中學校暨幼兒園。

1970s

Dr. Po King Betty Chan, Madam Tsang's daughter and currently chairperson of the Board of Governors, revolutionised Early Childhood Education in HK by introducing play-based learning and child-centred approach.

陳保琮博士(創辦人曾楚珩女士的女兒及現任耀中幼教學院校董會主席)在美國完成學業後秉承母志,肩負耀中的優質教育使命。陳博士牽頭革新香港的幼兒教育,引入開放課室的概念,推廣寓學習於遊戲的嶄新思維。

2008

Widened Education Network 擴大教育網絡

Yew Chung Space Community College (YCCC) was established to offer accredited associate degree programmes in 2008.

耀中社區書院於2008年成立並提供受認可的副學位課程。

2014

Launching of the Higher Diploma in Early Childhood Education programme 開辦幼兒教育高級文憑課程

YCCC became the first private higher education institution in Hong Kong to offer formal teacher training with its Higher Diploma in Early Childhood Education programme that nurtured qualified ECE practitioners with academic excellence. Graduates could obtain all four professional qualifications issued by the Education Bureau and Social Welfare Department.

耀中社區書院是香港首間獲政府認可提供職前幼師培訓的自資院校並開辦幼兒教育高級文憑課程,培育優秀幼教工作者,畢業生可獲由教育局及社會福利署頒發的四個專業資格。

2018

YCCECE Established 耀中幼教學院成立

Yew Chung College of Early Childhood Education (YCCECE) was established — being the first and only specialist institute of Early Childhood Education in Asia.

耀中幼教學院成立,成為亞洲首間專注幼兒教育的高等學校。

2019

Pamela Peck Discovery Space Established 耀學園落成

Pamela Peck Discovery Space (PPDS) is a specialist play space and living lab on campus designed for children from birth to age 8 and their families, offered by the Yew Chung Early Childhood Discovery Centre (YCECDC).

耀中幼教發展中心的耀學園探索空間是一個為初生至8歲的兒童及家庭而設的學習環境及生活實驗室。

2022

First private Higher Education Institution in Hong Kong offered the Certification Course for Kindergarten Principals.

學院開辦「幼稚園校長資格培訓證書課程」,成為本港首間開辦幼稚園校長資格培訓證書的自資院校。

Establishment of Mengxue Institute 中華蒙學苑成立

YCCECE Mengxue Institute was officially established on 14 Oct 2022.

耀中幼教學院·中華蒙學苑於2022年10月14日正式成立。

2024

Establishment of the CHERI 楚珩教育研究所成立

The Chor Hang Educational Research Institute (CHERI) was established at YCCECE.

楚珩教育研究所(“楚珩研究所”)在耀中幼教學院成立。

The College has successfully achieved institutional accreditation for operating Postgraduate programmes at Qualifications Framework (QF) Level 6 with the Hong Kong Council for Accreditation of Academic and Vocational Qualifications (HKCAAVQ), paving the way for new degrees to be launched in the 2025/26 Academic Year.

學院成功通過香港學術及職業資歷評審局對開辦資歷架構第六級的機構評審,可於2025/26學年推出全新的研究生課程。

2025

Officially launched Postgraduate Diploma in Education (Early Childhood Education) and Master of Education (MEd) programmes.

耀中幼教學院正式推出全新研究生課程:學位教師教育深造文憑(幼兒教育)及教育學碩士課程。

Our People 我們的團隊

Inspired International Academic Team

卓越的國際學術團隊

Our strong team of global academics and administrators hails from the USA, Singapore, South Africa, Hong Kong and Mainland China.

學院擁有來自世界各地的專業教學及行政團隊，當中包括美國、新加坡、南非、香港及中國內地。



Dr Po King Betty Chan

陳保琮博士

Chairperson, Board of Governors
校董會主席

Honorary Degree of Doctor of Humane Letters, University of Illinois Urbana-Champaign

Honorary Fellowship, Education University of Hong Kong

Honorary Degree of Doctor of Laws, University of Bath

Founding President, Pacific Early Childhood Education Research Association (PECERA) Hong Kong Chapter

President, PECERA International (2012-2018)

美國伊利諾大學香檳分校
榮譽人文學博士

香港教育大學榮譽院士銜

英國巴斯大學榮譽法學博士

太平洋區幼兒教育研究學會
(香港分部) 創會主席

太平洋區幼兒教育研究學會主席 (2012-2018)

A Strong Governance Team Leading the College Towards Excellence

堅實的治理團隊 引領學院邁向卓越

The Board of Governors of YCCECE is composed of professionals from the education, business, and social service sectors. They are responsible for the strategic development, policy oversight, and resource allocation of the College, ensuring continuous enhancement of educational quality and the fulfilment of our institutional mission.

耀中幼教學院的校董會由來自教育界、商界及社會服務界的專業人士組成，負責學院的策略性發展、政策監督及資源調配，確保學院持續提升教育質素，實現辦學使命。



Professor Kerry Lee
李敬廉教授

President and Chair Professor of Child Development
校長暨兒童發展講座教授

PhD, Macquarie University
澳洲麥覺理大學博士學位
BA (Hons), Sydney University
澳洲悉尼大學榮譽學士學位

Named World's Top 2% Scientists by Stanford University
榮膺史丹福大學全球首 2% 頂尖科學家



Professor Eric Cheng
鄭志強教授

Vice President (Academic)
副校長 (學術)

Doctor of Education in Education Management, The University of Leicester, United Kingdom
英國萊斯特大學教育管理教育博士
Master of Science, The Hong Kong Polytechnic University, Hong Kong
香港理工大學知識管理理學碩士
Master of Social Science, The Chinese University of Hong Kong
香港中文大學應用社會統計學社會科學碩士



Ms Cathy Li
李岩女士

Vice President (Administration)
副校長 (行政)

Master of Business Administration, Hult International Business School, San Francisco, California, USA
美國加州舊金山霍特國際商學院工商管理碩士
Master of Business Administration, Beijing University of Aeronautics and Astronautics, Beijing, China
中國北京航空航天大學工商管理碩士
Bachelor in English, Dalian University of Foreign Languages, Dalian, Liaoning Province, China
中國大連外國語大學英語學士



Dr Crystal Wanwei Zheng
鄭婉薇博士

Assistant Professor
Dean of Studies

助理教授
學務長

PhD, Middlesex University
MA, The Hong Kong Polytechnic University
BA, Guangzhou University

英國密德薩斯大學博士
香港理工大學碩士
廣州大學學士



Dr Qing Liu
劉晴博士

Assistant Professor
Assistant Dean of Studies

助理教授
助理學務長

PhD, The University of Hong Kong
MA, Tufts University
BMed, Sun Yat-Sen University

香港大學博士
美國塔夫茲大學碩士
中山大學學士



Professor Ping Shi
時萍教授

Professor
Director (Chor Hang Educational Research Institute)

教授
楚珩教育研究所所長

B.A., Nanjing Normal University

南京師範大學學士
(學前教育專業)



Dr Brad Chan
陳裕榮博士

Assistant Professor
Co-leader, Jockey Club 'CoolPlay' Project

助理教授
項目聯席總監(賽馬會「智·幼·趣」計劃)

DPhil, The University of Oxford
MSc, The University of Oxford
BEd, The University of Hong Kong

英國牛津大學博士
英國牛津大學碩士
香港大學學士



Dr Phoebe Cheung
張蓓蓓博士

Assistant Professor

助理教授

PhD, Monash University
MA, University of Southern California
BSc OT, University of Toronto
OT @, SIPT Cert.

澳洲蒙納殊大學博士
美國南加州大學碩士
加拿大多倫多大學學士
OT @, SIPT Cert.



Dr Serena Mengran Liu
劉萌然博士

Assistant Professor

助理教授

PD, University and Auckland
MS, Pennsylvania State University
BA, Southern Medical University
HDECE, Yew Chung College of Early Childhood Education

奧克蘭大學(新西蘭)博士
賓夕法尼亞州立大學碩士
南方醫科大學學士
耀中幼教學院高級文憑



Dr Zhang Ye
張曄博士

Assistant Professor

助理教授

PhD, The University of Auckland
MA, The Chinese University of Hong Kong
BEd, Zhejiang Normal University

奧克蘭大學哲學博士
香港中文大學教育學碩士
浙江師範大學教育學學士



Dr Carly Ng
吳嘉儀博士

Assistant Professor

助理教授

EdD, The Chinese University of Hong Kong
MEd, Baptist University of Hong Kong
BEd, University of South Australia

香港中文大學教育博士
香港浸會大學教育碩士
南澳大學教育學士



Dr Di Qi
齊迪博士

Assistant Professor

助理教授

Doctor of Philosophy, The University of Hong Kong
Master of Social Sciences, City University of Hong Kong
Master's Degree of Science, Beijing Normal University
Bachelor's Degree in Medicine, Tianjin Medical University

香港大學哲學博士
香港城市大學社會科學碩士
北京師範大學認知神經科學碩士
天津醫科大學臨床醫學學士



Dr Rohnii Tse
謝冠寶博士

Assistant Professor

Director & Principal Investigator,
HKJC 'Spark & Spot' Project

助理教授

賽馬會「點亮·亮點」計劃
總監暨首席研究員

PhD, University College London
MSLP, The University of Sydney
MSc, The University of Manchester

倫敦大學學院博士
雪梨大學碩士
曼徹斯特大學學士



Dr Bradley Mellen
Dr Bradley Mellen 博士

Senior Lecturer

Pastoral Coordinator

高級講師

成長關顧主任

EdD, University of Durham
MA, The University of Hong Kong
BA, University of Colorado

杜倫大學博士
香港大學碩士
科羅拉多大學學士



Ms Miriam Shah
Miriam Shah 博士

Senior Lecturer

Deputy Director of PPDS

高級講師

經學園副主席

MA, University College London
PGCE, University of Bolton
BA, Leeds Metropolitan University

倫敦大學學院碩士
博爾頓大學學位教師教育證書
利茲都會大學學士



Ms Mary Ann Hood
Mary Ann Hood 女士

Senior Lecturer

高級講師

MEd, University of Fort Hare
BA, Rhodes University
BA, University of South Africa

福特哈爾大學教育碩士
羅德斯大學學士
南非大學學士



Ms Penny Pan
潘瑞鋒女士

Lecturer

講師

Master of Developmental and Educational
Psychology, Capital Normal University
Bachelor of Psychology
Hubei University HDECE
Yew Chung College of Early Childhood Education

首都師範大學發展與教育
心理學碩士
羅德斯大學學士
南非大學學士



Ms Payal M. Mansukani
Payal M. Mansukani 女士

Lecturer

講師

MEd, The University of Hong Kong
BA, Middlesex University

香港大學碩士
英國密德薩斯大學學士



Ms Esther Chong
莊涇嫻女士

Lecturer

Programme Manager
(Higher Diploma in Early Childhood Education)

講師

課程主任
(幼兒教育高級文憑)

MA, Cornerstone University
BSc, Great Lakes Christian College

基石大學文學碩士
五大湖基督教學院理學士



Ms Carrie Ng
伍倩儻女士

Lecturer

Programme Manager
(Diploma in Early Childhood Education)

講師

課程主任
(幼兒教育與照顧文憑)

MA, The University of Hong Kong
BA & BEd, The University of Hong Kong

香港大學碩士
香港大學教育學士



Ms Dandan Zhang
張丹丹女士

Lecturer (Research)

講師 (研究)

BA, Henan University
MA, Northeast Normal University

河南大學學前教育專業學士
東北師範大學學前教育專業碩士



Ms Ruoyu Wen
文若予女士

Lecturer

Programme Manager
(Higher Diploma in Early Childhood Education)

講師

課程主任
(幼兒教育高級文憑)

MA, Teachers College, Columbia University
BA, China Foreign Affairs University

哥倫比亞大學師範學院碩士
中國外交學院學士



Ms Ivy Li
李樂華女士

Practicum Manager

實習統籌經理

MEd, The University of Hong Kong
BA, The University of Hong Kong

香港大學教育碩士
香港大學學士

Yew Chung Approach to Early Childhood Education | 耀中幼教教學法

The Twelve Values

The 12 Values of the Yew Chung Approach to ECE are at the heart of our Yew Chung Yew Wah Early Childhood Education. The 12 Values approach centres on strong relationships that encourage the inner transformation of young learners as they acquire knowledge, personal skills, and character traits of a global citizen. We embed the 12 Values in the design of the indoor and outdoor learning environments, as well as in the intentional daily interactions and routines of school life.

12項信條

耀中幼教教學法的12項信條乃我們幼兒教育模式的核心，它以牢固的關係為中心，鼓勵學生掌握知識、個人技能和全球公民應有的品格，作出內在轉變。從室內外學習環境的設計至校園生活，12項信條都貫穿於耀中耀華的教育之中。

"Defining A Yew Chung Approach: An Ongoing Project"

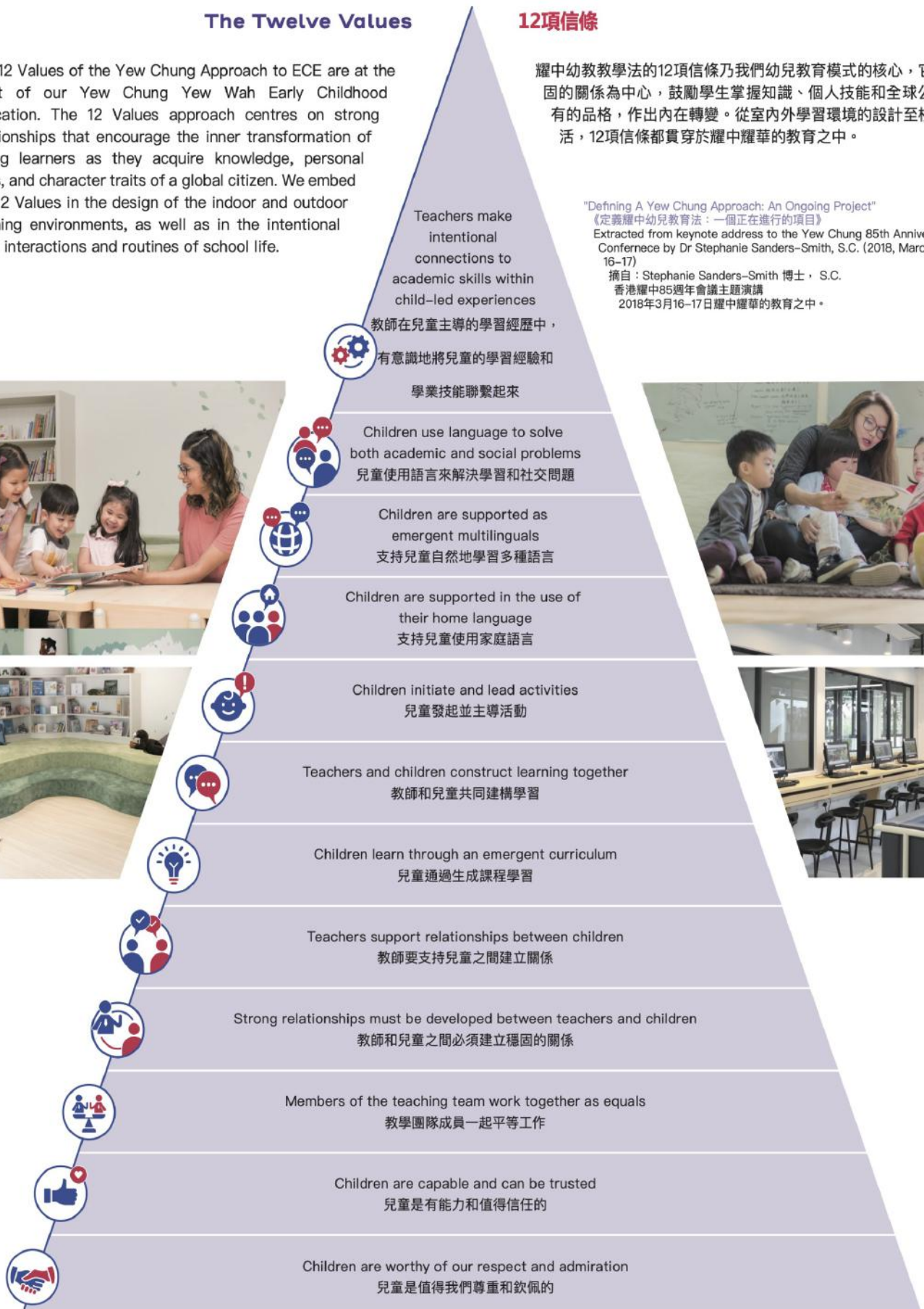
《定義耀中幼兒教育法：一個正在進行的項目》

Extracted from keynote address to the Yew Chung 85th Anniversary Conference by Dr Stephanie Sanders-Smith, S.C. (2018, March 16-17)

摘自：Stephanie Sanders-Smith 博士，S.C.

香港耀中85週年會議主題演講

2018年3月16-17日耀中耀華的教育之中。



Master of Education

教育學碩士



The Master of Education Programme offers a comprehensive and customisable curriculum that equips Postgraduate students with the knowledge, skills, and ethical values necessary to contribute to the advancement of education. Furthermore, the Programme curriculum covers contemporary educational issues with emphasis on equipping students with reflective skills and addressing the need for continuous professional development and lifelong learning capability.

教育學碩士學位課程提供全面且可定製的課程，使研究生具備足夠的知識和技能，及正確的道德價值觀，為教育界作出貢獻。此外，課程涵蓋當代教育領域，強調培養學生的反思能力，並滿足持續專業發展和終身學習能力的需要。

Special Features

- 1 Curriculum embedded with the Yew Chung Approach to Early Childhood Education
- 2 Authentic Learning Components
- 3 Research Subsidies Support

課程特色

- 1 課程融合耀中獨特的《耀中幼教教學法》
- 2 課程包含實境式學習
- 3 提供研究補助金

Programme Information

Commencement Date	Early January and September every year
Venue	YCCECE Tin Wan Campus and/or City Campus
Medium of Instruction	English Stream or Chinese Stream
Mode of Study	Full-time (regular or executive mode) or Part-time
Normative Programme Duration	Full-time (regular mode) : 1 year Full-time (executive mode) : 1.5 years Part-time: 2 years
Scholarships	Scholarships and Bursaries are available

課程資訊

開學日期	每年 1 月和 9 月上旬
上課地點	耀中幼教學院田灣校園及 / 或市區分校
教學語言	英語班或中文班
授課模式	全日制 (常規或行政上課模式) 或兼讀制
標準課程年期	全日制 (常規模式) : 1 年 全日制 (行政上課模式) : 1.5 年 兼讀制 : 2 年
獎學金	備有多種獎學金，助學金和獎勵支持學習



QF Level: 6
資歷級別: 6

Qualification Framework (QF) Information

Registration Validity Period:
01/09/2025 - 31/08/2028

資歷架構

資歷名冊登記號碼: 25/000391/L6
登記有效期: 01/09/2025 - 31/08/2028

Programme Structure

The Programme provides an interdisciplinary curriculum comprising of courses related to global education, developmental science, and educational technology.

The programme structure comprises of three components, namely (i) Academic Courses, (ii) Professional Integrated Learning (PIL), and (iii) Final Project. The Academic Courses are classified as “Core” and “Elective” Courses, the PIL and Final Project are both core courses (i.e. mandatory).

Component	No. of Courses	Credits
Academic Courses	Core	4
	Elective	3
Professional Integrated Learning (PIL) (Core)	1	10
Final Project (Core)	1	30
Total	9	110

Career Development[^]

Graduates can pursue careers in school administration, adult and vocational training, teacher education, classroom teaching, policy development, curriculum development, educational assessment and evaluation, educational research and other relevant fields.

[^] The completion of the programme will not qualify graduates for being registered as a registered teacher under the Education Ordinance (Cap. 279).
完成本課程的畢業生，將不被視為符合《教育條例》(第 279 章)之註冊教師資格。

Admission Requirements

- ① Hold a recognised bachelor's degree or equivalent
- ② Pass the admission interview
- ③
 - Ⓐ For English Stream
Fulfil the College's minimum English language requirements by attaining a minimum score of 6.5 in the International English Language Testing System (IELTS) or equivalent
 - Ⓑ For Chinese Stream
Fulfil the College's minimum Chinese (Cantonese/ Putonghua) language requirements or equivalent

課程結構

教育學碩士課程提供跨學科教程，包括與全球教育、發展科學和教育技術相關的內容。

本課程包括三類科目，(i) 學術課程、(ii) 專業綜合學習 (PIL) 及 (iii) 畢業課題。學術課程分為「核心」和「選修」兩部分；專業綜合學習和畢業課題均為核心部分，即為必修課。

課程組成部分	課程數目	學分
學術課程	核心	4
	選修	3
專業綜合學習 (核心)	1	10
畢業課題 (核心)	1	30
總計	9	110

事業發展[^]

畢業生可以從事學校管理、成人和職業培訓、教師培育、課堂教學、政策制定、課程開發、教育評估和評價、教育研究和其他相關領域等職業。

入學要求

- ① 持有認可的學士學歷或同等學歷
- ② 通過入學面試
- ③
 - Ⓐ 英語班
達到學院最低英語要求，即通過國際英語測試系統 (IELTS)，獲得至少 6.5 的分數，或同等學歷
 - Ⓑ 中文班
達到學院的最低中文 (廣東話 / 普通話) 語言要求或同等要求

Postgraduate Diploma in Education (Early Childhood Education)

學位教師教育深造文憑（幼兒教育）



The Postgraduate Diploma in Education (Early Childhood Education) Programme, in short PGDE(ECE), aims to cultivate knowledgeable and skillful ECE practitioners and to nurture passionate, visionary, innovative and dedicated early childhood professionals. Furthermore, the Programme curriculum covers contemporary ECE issues with emphasis on equipping students with reflective skills and a good understanding of the need for continuous professional development and lifelong learning capability.

學位教師教育深造文憑（幼兒教育）課程旨在培育知識淵博、技能嫻熟、對幼兒專業充滿熱誠、有遠見、敢於創新並且敬業的幼兒教育從業者。此外，課程涵蓋當代幼教問題，強調培養學生的反思能力，並充分理解持續專業發展和終身學習能力的必要性。

Special Features

The only PGDE(ECE) programme offers 4 licences including Registered Kindergarten Teacher by the Education Bureau, Registered Child Care Worker and Supervisor, and Qualified Special Child Care Worker by the Social Welfare Department.

- 1 Curriculum embedded with the Yew Chung Approach to Early Childhood Education
- 2 Programme including professional integrated learning
- 3 Graduates have exclusive access to the YCYW Teachers of Tomorrow Scheme

課程特色

本學位教師教育深造文憑（幼兒教育）畢業生可獲教育局認可為註冊幼稚園教師，及社會福利處認可之幼兒工作員、幼兒中心主管及特殊幼兒工作員共 4 個專業資格。

- 1 課程融合耀中獨特的《耀中幼教教學法》
- 2 課程包括專業綜合學習
- 3 課程畢業生可以參加《耀中耀華明師計劃》

Programme Information

Venue	YCCECE Tin Wan Campus and/or City Campus
Medium of Instruction	English
Mode of Study	Full-time
Normative Programme Duration	1 year
Scholarships	Scholarships and Bursaries are available

課程資訊

上課地點	耀中幼教學院田灣校園及 / 或市區分校
教學語言	英語
授課模式	全日制
標準課程年期	1 年
獎學金	備有多種獎學金，助學金和獎勵支持學習



QF Level: 6
資歷級別：6

Qualification Framework (QF) Information
Registration Validity Period:
01/09/2025 - 31/08/2028

資歷架構
資歷名冊登記號碼：25/000718/L6
登記有效期：01/09/2025 - 31/08/2028

Programme Structure

The programme comprises of academic courses, professional integrated learning (PIL) and practicum. The PIL and practicum are both core courses.

Component	No. of Courses	Credits
Academic Courses	11	70
Professional Integrated Learning (PIL) (Core)	2	80
Practicum (Core)	1	38
Non-credit Bearing Courses (Required)	2	-
Non-credit Bearing Courses (Optional)	2	-
Total	16*	188

* Including the two required non-credit bearing courses

Career Development

Graduates are eligible to be registered as Kindergarten Teachers with the Education Bureau; and be registered as Child Care Workers, Child Care Supervisors, and qualified as Special Child Care Workers with the Social Welfare Department.

Admission Requirements

- 1 Hold a recognised bachelor's degree or equivalent
- 2 Fulfil the College's minimum English language requirements by attaining a minimum score of 6.5 in the International English Language Testing System (IELTS) or equivalent
- 3 Pass the admission interview

課程結構

學位教師教育深造文憑(幼兒教育)課程包括學術課程, 專業綜合學習和實習。專業綜合學習和實習均為核心部份。

課程組成部分	課程數目	學分
學術課程	11	70
專業綜合學習(核心)	2	80
實習(核心)	1	38
非學分科目(必修)	2	-
非學分科目(選修)	2	-
總計	16*	188

* 包括兩個非學分科目

事業發展

畢業生均符合資格向教育局註冊為幼稚園教師; 及有資格在社會福利署註冊為幼兒工作員、幼兒中心主管, 以及特殊幼兒工作員, 共 4 個專業資格。

入學要求

- 1 持有認可的學士學歷或同等學歷
- 2 達到學院最低英語要求, 即通過國際英語測試系統 (IELTS), 獲得至少 6.5 的分數, 或同等學歷
- 3 通過入學面試

Research and Community Support

研究項目及社區支援

YCCECE is making an impact on the most fast-moving and challenging early childhood education trend in Hong Kong. Actively interact with professional parties, the Research Office is thrived to closely collaborate and have exchange connection with the government and industry leaders to facilitate in-depth research that contribute to ECE in Hong Kong.

The College utilises both public and private-sector fundings appropriately for every type of project. As a pioneer and the very first and only specialist higher education institution in Asia, it shares the latest research findings and provides support for the operation of lectures and conferences for the general public.

耀中幼教學院一直致力以研究成果與獨特的灼見激發教育之旅或為社會帶來貢獻。學院的在校研究項目得到非政府機構的支持與資助，由學院的世界知名幼教專家領導，融匯堅實的專業知識與豐富的經驗，受到廣泛認同的研究往往為幼兒教育提供切實可行的改進方案。



Jockey Club 'CoolPlay' Project

The three-year Jockey Club 'CoolPlay' Project, funded by the Hong Kong Jockey Club Charities Trust and co-organised by Yew Chung College of Early Childhood Education (YCCECE) and the Vocational Training Council (VTC), has offered child-centric teaching resource kits, training and support to local early childhood educators and parents. Three notable achievements have been attained, namely, developing Hong Kong's first three-in-one exploration kit JumpStarter (bilingual story books, a teachers' guide and a parents' guide), training the first batch of Exploratory Learning seed teachers, nurturing parents with exploration mindset through the popular Discovery Space visits, and establishing Hong Kong's first Home-School-Community network setting the benchmark for Exploratory Learning. Notably, the JumpStarter Series has garnered significant honours in two major international competitions, namely International Invention Innovation Competition in Canada (iCAN) 2023 and 2023 International Innovation & Invention Competition (IIIC).

Phase 2 of the project officially launched in 2023, with continued funding from The Hong Kong Jockey Club Charities Trust for this four-year initiative. Co-organised by YCCECE and Hong Kong Christian Service, this phase will uphold a 'child-centred' philosophy and expand its reach to seven grassroots communities. It will provide sustained and comprehensive educational support and resources for kindergarten teachers and parents in these areas, working together to create an environment that encourages children to explore. By stimulating their curiosity and learning interest, the program aims to develop essential 21st-century skills such as creativity, communication, and collaboration. This phase is expected to benefit 414 schools, 239 principals, 1,423 practising teachers, and over 55,000 children and their families.

賽馬會「智·幼·趣」計劃

由香港賽馬會慈善信託基金捐助，耀中幼教學院聯同職業訓練局（VTC）共同主辦為期三年的幼兒教育項目－賽馬會「智·幼·趣」計劃第一階段於2020年起開展，一直為本地教育者及家長提供適合幼兒的教學資源、培訓及支援，並建構穩健的「家校社網絡」，讓他們能夠充分掌握相關知識和教學技巧，引導幼兒從校內以及日常生活中進行各種「探索式學習」。

透過各種針對不同對象的培訓或活動，賽馬會「智·幼·趣」計劃第一階段取得了三大成果，分別開發全港首套三合一「探索式學習」教學資源－JumpStarter（雙語兒童故事書、教師指南及家長指南）、訓練全港首批「探索式學習」的種子老師、以及推出廣受家長歡迎的〈耀學園親子之旅〉。這些成果促進了「家、社、校」三方合作，共同推動本地幼兒教育發展。值得一提的是，JumpStarter系列更在兩項國際比賽中榮獲殊榮，包括2023年加拿大國際發明及創新比賽（iCAN）和2023年國際創新發明競賽（IIIC）。

計劃第二階段已於2023年正式啟動，並獲得香港賽馬會慈善信託基金的持續捐助，支持為期四年的計劃。此計劃由耀中幼教學院與香港基督教服務處共同合作推行。第二階段將秉持「兒童為本」的理念，進一步擴展至七個基層社區，為區內的幼稚園教師及家長提供持續且全方位的教學支援與資源，攜手打造一個鼓勵幼兒探索的社區環境。透過激發孩子的好奇心與學習興趣，計劃旨在培養他們的創意、溝通及合作等21世紀關鍵技能。預計此計劃將惠及414所學校、239名校長、1434名在職教師、超過55,000名幼兒及其家庭。



Jockey Club 'Bright Start' Project

The Jockey Club Bright Start Project Phase II is a four-year initiative, supported by continued funding of approximately HK\$200 million from The Hong Kong Jockey Club Charities Trust. The project is organised by Yew Chung College of Early Childhood Education, with the Pacific Association for Early Childhood Education Research (Hong Kong) and The Chinese University of Hong Kong as professional partners. It collaborate to provide comprehensive professional support to around 80% of Hong Kong standalone child care centres serving infants and toddlers from birth to 3 years old, benefiting more early childhood educators, families, and the community.

Jockey Club 'Spark & Spot' Project

The Jockey Club 'Spark & Spot' Project, funded by The Hong Kong Jockey Club Charities Trust and organised by Yew Chung College of Early Childhood Education (YCCECE), spans across 46 months from 2024 to 2027, focusing on the theme 'Enriching Education, Empowering Diversity'. The Project aims to equip local kindergartens and nursery schools to optimise inclusive teaching practices and embrace learner diversity through professional development, coaching and environment enhancement. It builds a community of practice to foster early childhood educators' self-efficacy in creating an inclusive learning environment to bring about a long-lasting learner-centric change in early childhood education. The Project will benefit around 90 kindergartens and nursery schools, 340 teachers and 160 administrators including school principals and head teachers.

Other featured research projects of the College

- HKJC Inclusive Quality (IQ) Preschool Project
- Research on the effectiveness of a newly developed Quality Service Model for Early Years (CRH)
- CLP Education Fund
- From Assignment to Published Work: Documenting the Process of Story-Making
- Kindergarten Early English Project
- Exploring Innovative Pedagogical Practices in Early Childhood Education Teacher Education
- Academic Consultation Service for Hong Chi Association Occupational Therapy Unit (Adult Services)

賽馬會幼兒「喜步」計劃

賽馬會幼兒「喜步」計劃第二階段展開為期4年的計劃（2025-2029），獲得香港賽馬會慈善信託基金繼續支持，捐助約2億港元。本計劃由耀中幼教學院主辦，太平洋區幼兒教育研究學會（香港）及香港中文大學為專業夥伴，攜手為全港逾八成為初生至3歲嬰幼兒服務的幼兒中心提供全面的專業支援，惠及更多幼兒教師、家庭及社區人士。

賽馬會「點亮·亮點」計劃

賽馬會「點亮·亮點」計劃獲賽馬會慈善信託基金捐助約 6000 萬，由耀中幼教學院主辦這個為期 46 個月（2024-2027 年）針對提升幼稚園處理多元教學需要的手法與方案。

計劃以「拉闊教育 擁抱共融」為理念，透過教職員專業培訓、校本教學指導，以及兼顧多元感官學習需要的全納校園環境設計，幫助本地幼稚園及幼兒學校推動能照顧多樣性學習需要的教學，實踐共融理念。同時，通過建立實踐社群提昇學前教育工作者對創建共融學習環境的自我效能感，促進幼兒教育界實踐以學生為本的長遠及可持續教學理念。計劃將惠及 90 多間幼稚園和幼兒學校，約 340 名幼師和 160 名校長、主任等管理層人員。

學院其他特色研究項目

- 賽馬會幼兒融合教育研究計劃
- 開發的早期教育優質服務模型的有效性研究
- 中電教育基金
- 從作業到發表作品：記錄故事製作過程
- 英語教學支援計劃
- 探索幼兒教育教師教育的創新教學實踐
- 匡智會職業治療組學術諮詢服務（成人服務）

Scholarship for Admission | 入學獎學金

We offer a range of scholarships and merit award schemes to support local and international postgraduate students with exceptional achievements, enabling them to pursue their studies at YCCECE without much financial burden.

我們提供一系列獎學金及優異獎勵計劃，旨在支持具有卓越成就的本地及國際研究生，讓他們能夠在經濟負擔減少的情況下，於耀中繼續深造。

Learn More
了解更多



How to Apply 入學申請程序

1

Complete Application

遞交申請



- Apply via <https://apply.yccece.edu.hk/>
- Create a new account for submitting application.
- Applicants are required to settle the non-refundable application fee.
- 瀏覽 <https://apply.yccece.edu.hk/>
- 建立新帳戶以遞交申請。
- 申請人須繳交報名費，取錄與否概不退還。

2

Interview Arrangements

面試安排



- Applicants will be invited to attend an admission interview
- Upon passing the admission interview, applicants will receive a conditional or confirmed offer.
- 學院將聯絡申請人安排入學面試。
- 如申請人通過面試，將收到有條件／確認取錄。

3

Offer Acceptance

確認學位

- Applicants are required to –
- Submit supporting documents (if any)
- Complete the registration procedures
- Settle the registration fee
- 申請人必須 –
- 遞交證明文件（如有）
- 完成註冊程序
- 支付註冊費

Apply Now
立即申請



Postgraduate Scholarships

Tuition Fee (Academic Year 2026/27)

Master of Education (MEd)

	Tuition Fee (HK\$)
Full-time: 1 year	\$238,000 (\$115,000 per instalment x 2 instalments)
Part-time: 2 years	\$238,000 (\$57,500 per instalment x 4 instalments)

Postgraduate Diploma in Education (Early Childhood Education) (PGDE(ECE))

	Tuition Fee (HK\$)
Full-time: 1 year	\$207,000 (\$100,000 per instalment x 2 instalments)

	Scholarship Amount (HK\$)		
	MEd (Full-time)	MEd (Part-time)	PGDE(ECE)
Entrance Scholarship	Decent Bachelor's Degree or Master's Degree with good interview performance \$50,000	Decent Bachelor's Degree or Master's Degree with good interview performance \$25,000	Outstanding Bachelor's Degree or Master's Degree \$100,000
	Outstanding Bachelor's Degree or Master's Degree with good interview performance \$80,000	Outstanding Bachelor's Degree or Master's Degree with good interview performance \$40,000	
Entrance Scholarship for Belt and Road Countries	Good Bachelor's Degree or Master's Degree with good interview performance \$115,000	/	/
	Outstanding Bachelor's Degree or Master's Degree with good interview performance		
	Up to Full Scholarship \$230,000 plus Accommodation and Living Allowance		
YCCECE Alumni Entrance Scholarship	\$ 92,000	\$ 46,000	/
YCYW Alumni Entrance Scholarship	\$ 69,000	\$ 34,500	
YCYW Staff Entrance Scholarship	\$ 138,000	\$ 69,000	
Consulate General Recognition Scholarship	Full scholarship \$230,000	/	
PECERA Member Entrance Scholarship[*]	\$ 69,000	\$ 34,500	/

^{*}This scholarship supports the registered members of the Pacific Early Childhood Education Research Association (PERCERA).

YCCECE reserves the right to change the terms or withdraw the above scholarships without any notice. In case of any dispute/disagreement, YCCECE's decision is final.



研究生獎學金 學費 (2026/27學年)

教育學碩士

	學費 (港幣)
全日制: 1年	\$238,000 (\$115,000 分 2 期繳付)
全日制: 2年	\$238,000 (\$57,500 分 4 期繳付)

學位教師教育深造文憑 (幼兒教育)

	學費 (港幣)
全日制: 1年	\$207,000 (\$100,000 分 2 期繳付)

	獎學金金額 (港幣)		
	教育學碩士 (全日制)	教育學碩士 (兼讀制)	學位教師教育深造文憑 (幼兒教育)
入學獎學金	持有良好學士或碩士學位成績， 且面試表現優異 \$50,000	持有良好學士或碩士學位成績， 且面試表現優異 \$25,000	持有卓越學士或碩士學位成績， 且面試表現優異 \$100,000
	持有卓越學士或碩士學位成績， 且面試表現優異 \$80,000	持有卓越學士或碩士學位成績， 且面試表現優異 \$40,000	
「一帶一路」國家 入學獎學金	持有良好學士或碩士學位成績， 且面試表現優異 \$115,000	/	/
	持有卓越學士或碩士學位成績， 且面試表現優異		
	最高可獲全額獎學金 230,000 港幣， 另含住宿及生活津貼		
耀中幼教學院校友 入學獎學金	\$ 92,000	\$ 46,000	/
耀中耀華校友 入學獎學金	\$ 69,000	\$ 34,500	
耀中耀華員工 入學獎學金	\$ 138,000	\$ 69,000	
總領事館 推薦獎學金	全額獎學金 \$230,000	/	
太平洋區幼兒教育研究 學會成員 入學獎學金 [^]	\$ 69,000	\$ 34,500	/

[^]此獎學金旨在支持太平洋區幼兒教育研究學會 (PERCERA) 的註冊成員。

耀中幼教學院保留在不另行通知的情況下更改條款或撤銷上述獎學金的權利。如有任何爭議，耀中幼教學院的決定將為最終決定。



3977 9877



9312 0733



admissions@yccece.edu.hk



香港仔田灣田灣山道2號



www.yccece.edu.hk



YEW CHUNG COLLEGE
OF EARLY CHILDHOOD
EDUCATION

耀中幼教學院

YEW CHUNG COLLEGE OF EARLY CHILDHOOD EDUCATION
耀中幼教學院

2 Tin Wan Hill Road, Tin Wan, Aberdeen, Hong Kong
香港香港仔田灣田灣山道二號

City Campus:
市區分校：

3 To Fuk Road, Kowloon Tong
九龍塘多福道 3 號

☎ (852) 3977 9877
📞 (852) 9312 0733
📧 hkyccece
✉ admissions@yccece.edu.hk

📘 Yew Chung College of Early Childhood Education
📷 yccecehk
📺 yccecehk
🌐 YCCECE Yew Chung College of Early Childhood Education

www.yccece.edu.hk

YCCECE is a member of the Yew Chung Education Foundation (YCEF),
both are registered non-profit organisations in Hong Kong

耀中幼教學院為耀中教育機構成員，兩者均為香港註冊非牟利團體

C-2025/12