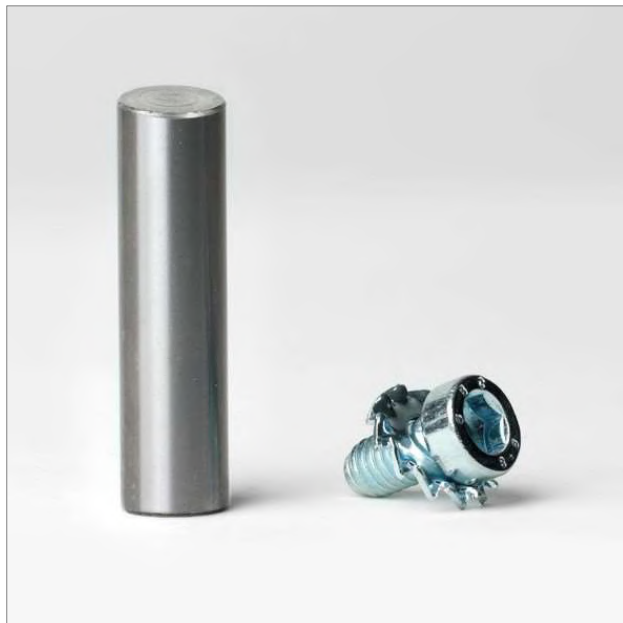


ACCELERATOR BARS, STAINLESS STEEL

TECHNICAL DATA SHEET



Version	Accelerator Bar 23 mm	Accelerator Bar 11 mm
MONTI Item Code	ZU-062	ZU-063
Material	stainless steel 1.4034	stainless steel 1.4034
Application	for use with Bristle Blaster® Belts of stainless steel, 23 mm wide	for use with Bristle Blaster® Belts of stainless steel, 11 mm wide
Internal thread	M6	M6
Length	40 mm	24 mm
Diameter	10 mm	10 mm
Weight	20g per pc.	10g per pc.
Sales package	plastic bag with 1 or 5 pc.	plastic bag with 1 or 5 pc.

MontiPower | Part of Monti Group
 MONTI - Werkzeuge GmbH
 Reiserstr. 21 | 53773 Hennef | Germany
 T +49 2242 9090 630
 info@montipower.com
 www.montipower.com

MontiPower Americas
 7677 Coppermine Drive
 Manassas VA 20109
 T +1 703 396 8777

