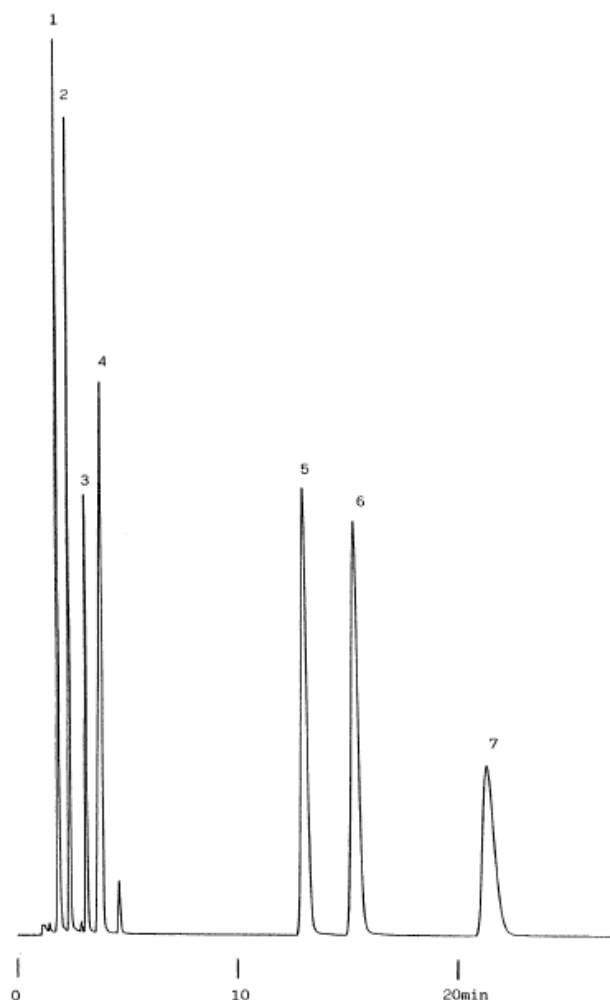


Catechol amine

Data No. LA224-0000



Column : Inertsil C4
5 μ m
150 \times 4.6mm I.D.

Column Cat. No. : 5020-01401

Eluent : CH₃CN/5mM IPCC-12A+20mM NaH₂PO₄(pH3 by
H₃PO₄)=20/80
IPCC-12A:Sodium Dodecylsulfate

Flow rate : 1.0 mL/min.

Col. Temp. : 40°C

Detection : UV 280 nm

Injection Vol. :

Sample :

Solutes : 1. Vanillylmandelic acid(VMA)
2. 3,4-Dihydroxy phenyl acetic acid
3. Homovanillic acid(HVA)
4. L-DOPA
5. L-Noradrenaline
6. L-Adrenaline
7. Dopamine Hydrochloride