



Flavors of DORDOGNE

Medieval villages, magnificent
gastronomy, and magical landscapes



Château de Haute-Serre



Your 9-Day Itinerary *(subject to change)*

Day 1: En route from U.S.

Day 2: Arrive in Toulouse / Transfer to Mercuès (D)
 Bienvenue en France! (Welcome to France!)
 Settle in, enjoy a festive welcome dinner
 Overnight: Château de Mercuès

Day 3: Cahors / Haute Serre (B,L)
 Wine tasting, lunch, tours of property and vineyard at Domaine de Haute-Serre
 Overnight: Château de Mercuès

Day 4: Rocamadour (B,L)
 Cliffside village tour, cheese farm visit and tasting, afternoon at leisure
 Overnight: Château de Mercuès

Day 5: Pech Merle / Saint-Cirq-Lapopie (B,L,D)
 Visit to the neolithic caves of Pech Merle and truffle tasting
 Overnight: Château de Mercuès

Day 6: Sarlat-la-Canéda / Les Eyzies-de-Tayac / Thonac (B,L)
 Market tour and gourmet tasting in Sarlat-la-Canéda, visit the charming Château de Losse and its gardens
 Overnight: Château de Mercuès

Day 7: Beynac / La Roque-Gageac (B,L)
 Cooking class and lunch at traditional *gîte*, guided tour of the fortress of the Périgord, dinner at leisure
 Overnight: Château de Mercuès

Day 8: Luzech / Puy l'Evêque (B,D)
 Wine tasting, medieval village, Michelin-starred farewell dinner
 Overnight: Château de Mercuès

Day 9: Transfer to Toulouse / Depart for U.S. (B)

(R = Reception, B = Breakfast, L = Lunch, D = Dinner)

Activity Level: Activities are generally not very strenuous, however, we expect that guests can enjoy two hours or more of walking each day, are sure-footed on cobbled and unpaved surfaces, and can walk up and down stairs without assistance. The Château de Mercuès was constructed in the 13th century. While it has been updated to modern standards, its original structure means guests will find stone floors and steps that may not have railings. There is an elevator, but it does not access every floor.



Village of Rocamadour



Saint-Cirq-Lapopie



Interact

- With your small group (maximum 30 guests), enjoy seven nights in the beautiful 13th-century Château de Mercuès.
- Gain a deeper understanding of wine, gastronomy, and the world among connoisseurs and the curious.
- Join an intimate cooking class with a chef sharing inspiration, secrets, and favorite recipes.

Partake

- Savor new flavors with a vineyard tour, wine tasting, and lunch at the Domaine de Haute-Serre.
- Indulge in local delicacies on a gourmet tasting tour of Sarlat-la-Canéda and during select meals at Michelin-starred properties.

Discover

- Take in the area's layered history with guided tours of the prehistoric cave paintings at Pech Merle and the 12th century Château de Beynac.
- Survey the small cliff-top village of Rocamadour and make stops at cheese and truffle farms.
- Explore beautiful village La Roque-Gageac with a walking tour.
- Day after day, experience the getaway appeal of the Dordogne, whose lush forests, rolling hills, and imposing cliffs make it the perfect setting to relax and celebrate the region.

What's Included

- 7 nights accommodations
- 7 breakfasts, 5 lunches, and 3 dinners
- All lessons, private tours and tastings, and unique small-group excursions noted in the 9-day itinerary
- Full guiding services of an Orbridge Travel Director and expert local guides
- Private motor coach transportation
- Luggage handling
- Gratuities to Orbridge Travel Director, local guides, drivers, porters, and wait staff for included meals
- Airport transfers for guests arriving and departing during the suggested times



Château de La Treyne



Your Accommodations (subject to change)

Unwind with a stay at the beautiful 13th-century Château de Mercuès, a Relais & Châteaux property with a Michelin-star restaurant. Built on a rocky promontory, the château's elevated location offers exceptional views from every vantage point. As the summer residence of the Counts and Bishops of Cahors for seven centuries, guests enjoy an authentic immersion in the history of France.

Note that rooms differ both in size and in color. All have one king or two twin beds and feature ensuite bathroom with combined bathtub/shower. Classic, Deluxe, Prestige, and Signature Suite options are available for consideration. Singles may choose from Deluxe, Prestige and Signature Suite categories.

Classic Double: 279-301 sq ft

Deluxe Double: 301-441 sq ft

Prestige Double: 344-592 sq ft

Signature Suite: 538-850 sq ft

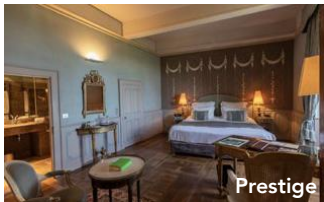
Room Amenities: Flat-screen TV, writing desk, phone, minibar, safe, and en suite bathroom with sundries and hair dryer.



Classic



Deluxe



Prestige



Signature Suite



Insider, Interpreter, Epicure, Host

Your Orbridge Travel Director will infuse your journey with an epicure's appreciation of food and wine, a local's knowledge and pride of place, and a travel aficionado's ability to gather the beauty of all senses to your discoveries in Dordogne.



Orbridge