



182 CRESCENT ROAD

CRESCENT RD & SOUTH DRIVE

A modern living room with a wooden coffee table, beige armchairs, and a staircase in the background. The room features a white built-in shelving unit on the left, a glass-enclosed staircase, and a dining area in the background. The text "A MASTERPIECE OF TIMELESS ELEGANCE" is overlaid on the image.

A MASTERPIECE OF TIMELESS ELEGANCE

Nestled in the heart of Rosedale, this fully renovated Victorian home seamlessly blends historic charm with modern luxury. Intricate stained glass windows, wrought iron accents, and soaring ceilings celebrate its rich architectural heritage, while a Scandinavian-inspired aesthetic introduces refined simplicity and contemporary elegance. Inside, expansive principal rooms, custom millwork, and elegant fireplaces create an inviting ambiance designed for both entertaining and everyday living.

Beyond the interiors, the outdoor spaces are equally captivating. The hard-landscaped front terrace and shaded porch, framed by a mature Japanese maple, enhance the home's stately presence, while the rear garden is an entertainer's retreat. With five bedrooms, five bathrooms, and a versatile layout, this home offers an exceptional blend of luxury and functionality.



SEAMLESS SPACES FOR LIVING AND ENTERTAINING

The grand foyer makes a lasting impression with white marble slab floors, a striking stained-glass feature, and a tempered glass staircase with a wooden handrail, offering an open sightline to the third floor. The living room is bright and inviting, featuring a bay window, a natural gas fireplace with a custom mantle, and floor-to-ceiling built-in bookcases. Wide plank hardwood floors extend into the dining room, where a south-facing picture window, marble-surround fireplace, and fluted walnut cabinetry create a warm, elegant setting.

At the heart of the home, the chef's kitchen is both functional and stylish, with Caesarstone countertops, an 8-foot granite waterfall island, and top-tier Wolf and Sub-Zero appliances. Custom walnut cabinetry with soft-close drawers and under-cabinet lighting ensures ample storage. A built-in walnut desk provides a practical workspace, while the southeast-facing breakfast nook enjoys morning light and a walkout to the rear garden, seamlessly blending indoor and outdoor living.







RETREATS DESIGNED FOR COMFORT

The second level offers a spacious family room, where Victorian wrought iron windows frame views of the front garden, filling the space with natural light. A gas fireplace with a marble surround and custom mantle adds warmth, while floor-to-ceiling built-in bookshelves provide both storage and a sophisticated focal point.

The primary suite is a private retreat, featuring a sitting area, custom built-in shelving, and south-facing windows overlooking the rear garden. A generous walk-in dressing room with custom cabinetry and open shelving leads into a spa-like ensuite with heated marble floors, a double vanity, a marble walk-in shower with glass enclosure, and high-set privacy windows that allow in natural light without compromising seclusion. A sunlit second bedroom with a built-in bay window seat and a luxurious four-piece bathroom complete this floor.



THIRD LEVEL

The third level offers three expansive bedrooms with arched ceilings, barrel windows, and tranquil views of the gardens and putting green. A versatile den or office space and a spa-like bathroom with heated marble floors and a rainfall shower add to the home's refined character.

LOWER LEVEL

The lower level extends the home's living space with 8-foot ceilings and bright south-facing windows. The recreation room and gym feature mirrored walls and built-in shelving, maximizing light and functionality.

A spacious laundry room with LG appliances, a stainless-steel sink, and extra storage closets adds efficiency. The spa-like bathroom includes heated floors, a glass-enclosed rainfall shower, and a wall-to-wall vanity with ample storage.





INCLUDED FEATURES

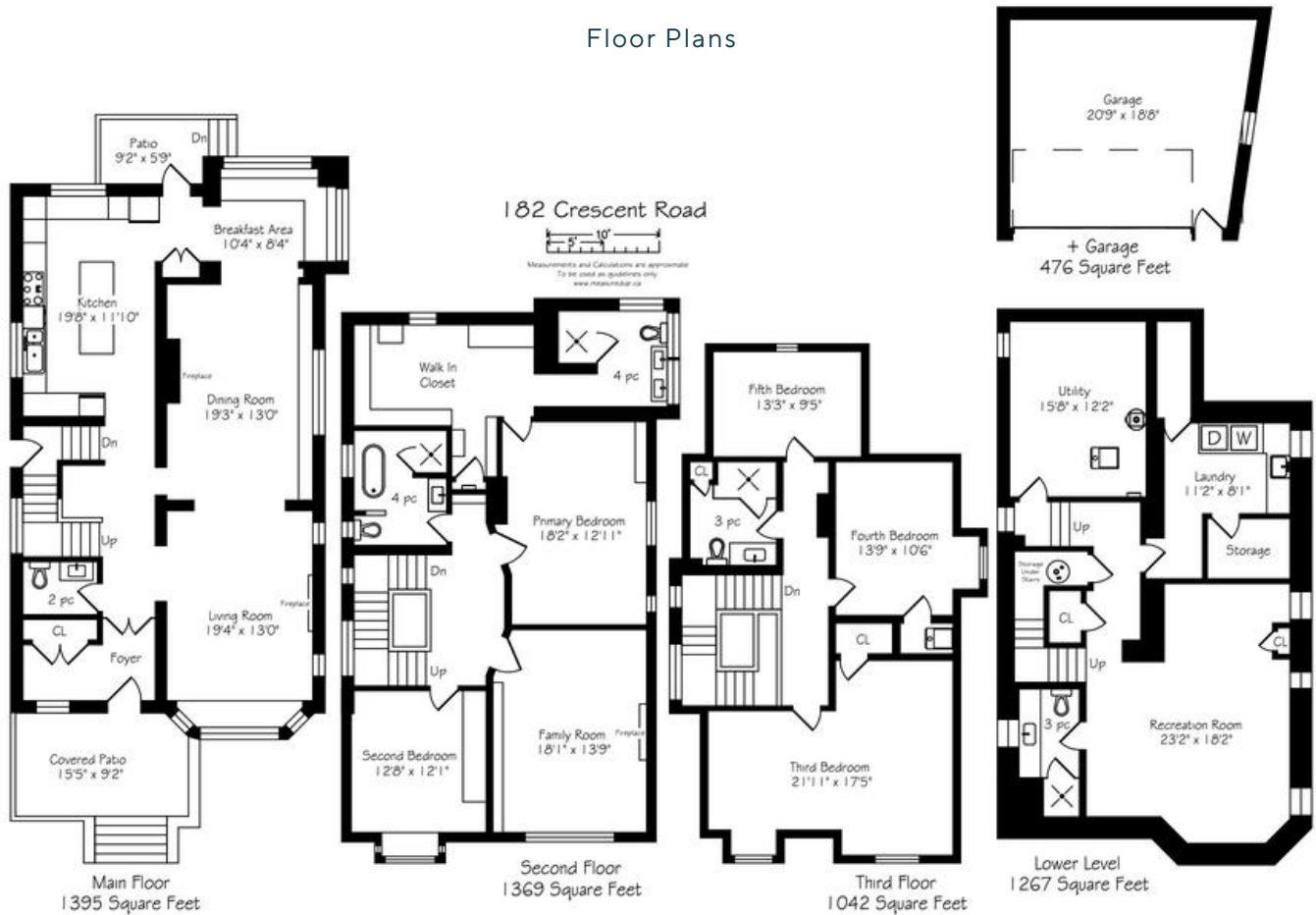
- The grand foyer makes a striking first impression with white marble slab floors, original stained-glass windows, a wrought iron-detailed front door, and a breathtaking tempered glass staircase with a wood handrail that extends through all levels.
- Wide hallways and soaring 9-foot ceilings on all three levels and an abundance of large windows.
- Architectural details are meticulously preserved, featuring custom trim work, stained-glass accents, intricate wrought iron windows, and elegant archways.
- The living room has a large west-facing bay window, a floor-to-ceiling custom-built-in bookshelf, and a stunning wood-burning gas fireplace framed by two original stained-glass leaded windows.
- The dining room exudes warmth and sophistication with a floor-to-ceiling marble-surround fireplace, a large south-facing picture window, and wall-to-wall fluted walnut cabinetry.
- The chef's kitchen features modern white Caesarstone countertops, an 8-foot granite waterfall island with built-in walnut drawers. A cozy breakfast nook offers a custom built-in seating area with hidden storage, large windows, and a walk-out to the backyard.
- The second-floor family room is a sophisticated retreat with gorgeous Victorian wrought iron windows, a wood-burning gas fireplace with a marble surround, and custom built-in bookshelves.
- The primary suite is an oasis of tranquility with a sitting area, walk-in closet, south-facing windows, a frosted wrought iron accent window, and custom built-in shelving. The suite boasts heated marble slab floors, a Caesarstone vanity with double sinks, a glass-enclosed marble walk-in shower.
- The second bedroom is a bright and airy space with a large west-facing bay window complete with built-in seating, as well as a floor-to-ceiling custom closet along the south wall for ample storage.
- The second-floor bathroom is a serene retreat featuring heated tile floors, a freestanding soaker tub, a glass-enclosed walk-in shower, a Caesarstone vanity, and a wrought iron frosted window.
- The oversized third bedroom offers a lounge area, two stunning barrel windows overlooking the front garden, a large closet with automatic lighting, and beautifully arched detailed ceilings.
- The fourth bedroom enjoys beautiful south-facing views of the backyard and the private golf putting green, while the fifth bedroom serves as a versatile space perfect for an office, den, or study.
- The third-level bathroom is luxuriously designed with heated marble floors, a rainfall shower with a marble enclosure and glass surround, a Caesarstone vanity with storage drawers, and a Toto toilet.
- The lower level offers a spacious recreation room and gym area with mirrored walls, built-in shelving, and three large south-facing windows that bring in natural light. The lower-level bathroom features heated floors, a rainfall shower with a glass enclosure, a wall-to-wall countertop with storage.
- The laundry room is equipped with an LG front-load washer and dryer, a stainless steel soaker sink, a large walk-in closet, and a cold storage area.
- A private side entrance provides direct access to the driveway and the detached garage.
- The front yard is a beautifully landscaped sanctuary with a step-down terrace, an evergreen hedge for privacy, a shaded porch, and a stunning Japanese maple tree. The rear garden is a tranquil retreat with professionally landscaped AstroTurf, a wooden veranda, with wrought iron accents.
- Situated in the heart of Rosedale, this exceptional residence is within close proximity to Toronto's top-tier schools; Branksome Hall, The York School, Rosedale Junior Public School, and Whitney Junior Public School, offering an unparalleled lifestyle in one of the city's most desirable neighbourhoods.

EXCLUSIONS

- All Furniture
- All Art
- All Hanging Mirrors

182 CRESCENT ROAD

Floor Plans



TAXES

- \$20,779.14

LOT SIZE

- 54.88 (Frontage) X 103.45 (S) X 115.13 (N) X 68.18 (Rear)

PARKING

- Detached One & A Half Garage with 4-Car Private Drive

HEATING

- Gas Fired Hydronic System

COOLING

- Central Air Conditioning

INCLUSIONS

- All light fixtures
- Space Pak Air Conditioning unit and all equipment
- Hot water gas heating system and all equipment (Galaxy Gas Boiler 2022)
- GeneralAir humidifier and all equipment
- Eufy front doorbell camera and keypad lock system
- Avante Security system and cameras
- Wolf induction 5-burner cooktop, Wolf convection microwave oven, Double Wolf ovens, Panelled industrial Sub-Zero fridge with two freezer drawers, Panelled Miele Futura Crystal dishwasher

- All window coverings and blinds
- LG front-load washer and dryer
- Nest controllers
- Electric car charging station
- Custom shelving in the primary walk-in closet
- Built-in closets and a bay window nook, including cushion in the second-floor bedroom
- Gas firepit in the backyard
- Cedar shed in the backyard for garbage, compost, and recycling bins
- Two fireplace screens on the main floor in the living room and dining room
- Mirrored wall and gym floor mats in the lower-level gym
- Napoleon Gas BBQ
- Spalding Basketball Net

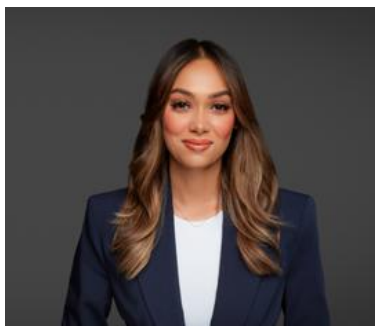


PRIVATE CITY OASIS

Beyond its stunning interiors, the home's exterior is equally impressive, featuring a hard- landscaped front yard with a Japanese maple, a low-maintenance astro turf garden with a mini put, and a slate roof. Complete with a detached one-and-a-half car garage and four private driveway spaces, this rare offering is situated in one of Toronto's most desirable neighbourhoods, close to top-tier public and private schools, parks, and downtown amenities.



ELEVATE YOUR EXPECTATIONS



Raisa Magnieux
Real Estate Agent
647.424.1382
raisam@heapsestrin.com



HEAPS ESTRIN

REAL ESTATE TEAM

For Royal LePage Real Estate Services Heaps Estrin Team, Brokerage. All information and statements contained herein, provided by Royal LePage Real Estate Services Heaps Estrin Team, Brokerage regarding property for sale, rental or financing is from sources deemed reliable and assumed correct, but no warranty or representation is made as to the accuracy thereof and same is submitted subject to errors, omissions, changes in price, rental or other conditions, prior sale or withdrawal without notice.

Royal LePage Real Estate Services Heaps Estrin Team, Brokerage Independently Owned and Operated