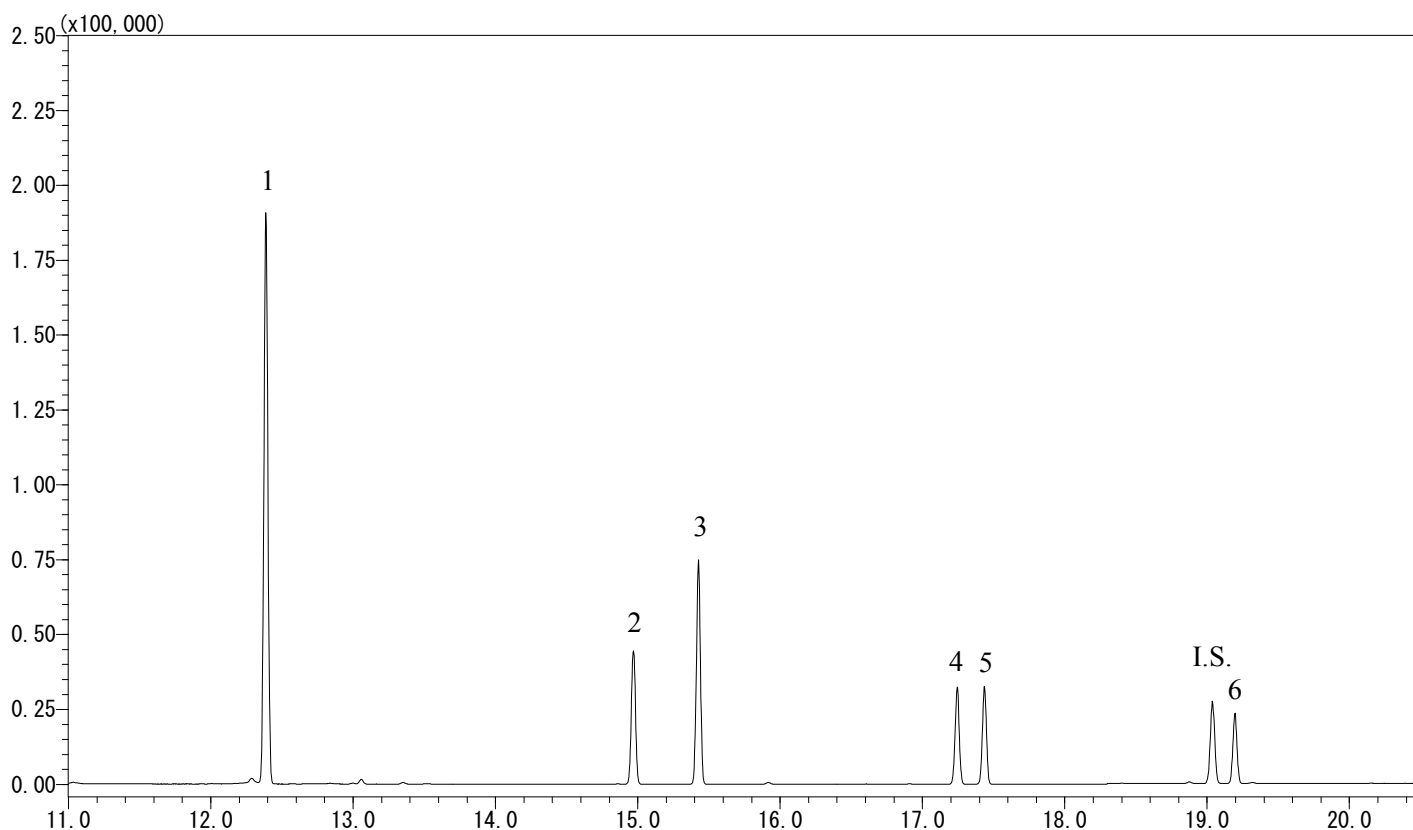


InertSearch™ for GC

InertCap® Applications

Phenols

Data No. GA 234-0644



Conditions

System : GC-MS
Column : InertCap 1MS
0.25 mm I.D. x 30 m df = 1.0 µm
Col. Cat. No. : 1010-12145
Col. Temp. : 50 °C (2 min hold) - 10 °C/min - 280 °C (5 min hold)
Carrier Gas : He 36.0 cm/sec
Injection : Splitless 1min
250 °C
Detection : MS SIM
Interface Temp. 280 °C
Sample Size : Analyte in Ethyl acetate
1 µL
Analyte : 1. Phenol (0.5 µg/mL)
2. 2-Chlorophenol (0.5 µg/mL)
3. 4-Chlorophenol (0.5 µg/mL)
4. 2,6-Dichlorophenol (0.5 µg/mL)
5. 2,4-Dichlorophenol (0.5 µg/mL)
6. 2,4,6-Trichlorophenol (0.5 µg/mL)
I.S. Acenaphthene-d10 (0.2 µg/mL)
(TMS Deriv. by BSTFA)