



ST JOHN'S

Anglican College



St John's Anglican College is a Kindergarten to Year 12 co-educational Christian school where every student is empowered to excel and equipped to embrace the challenge of any future. Our mission is to inspire lifelong learning by living faith with the courage to lead self and serve others.

This report has been compiled by St John's Anglican College to meet reporting obligations of the Queensland and Australian Governments

ANNUAL REPORT 2022

Our Students.

STUDENT POPULATION



St John's students gain the capacity, insight and knowledge they need to inspire real change in their community and the world. By providing our students with diverse opportunities and experiences, they develop character and agility within a supportive environment. Every student at St John's is unique. What they all have in common is the confidence to embrace the challenge of any future, equipping them to make their own positive impact on the world.

STUDENT ATTENDANCE



APPARENT RETENTION RATE - YEAR 10 TO 12



2022 NAPLAN RESULTS

YEAR 3 2022	READING	WRITING	SPELLING	GRAMMAR	NUMERACY
ST JOHN'S	468	437	485	494	444
STATE AVERAGE	422	407	402	419	387
NATIONAL AVERAGE	438	422	418	433	400

YEAR 5 2022	READING	WRITING	SPELLING	GRAMMAR	NUMERACY
ST JOHN'S	534	516	525	524	530
STATE AVERAGE	501	468	494	492	479
NATIONAL AVERAGE	510	484	505	499	488

YEAR 7 2022	READING	WRITING	SPELLING	GRAMMAR	NUMERACY
ST JOHN'S	572	557	573	567	584
STATE AVERAGE	535	515	541	528	537
NATIONAL AVERAGE	543	530	547	533	546

YEAR 9 2022	READING	WRITING	SPELLING	GRAMMAR	NUMERACY
ST JOHN'S	600	579	597	597	602
STATE AVERAGE	566	544	570	566	575
NATIONAL AVERAGE	578	560	577	573	584

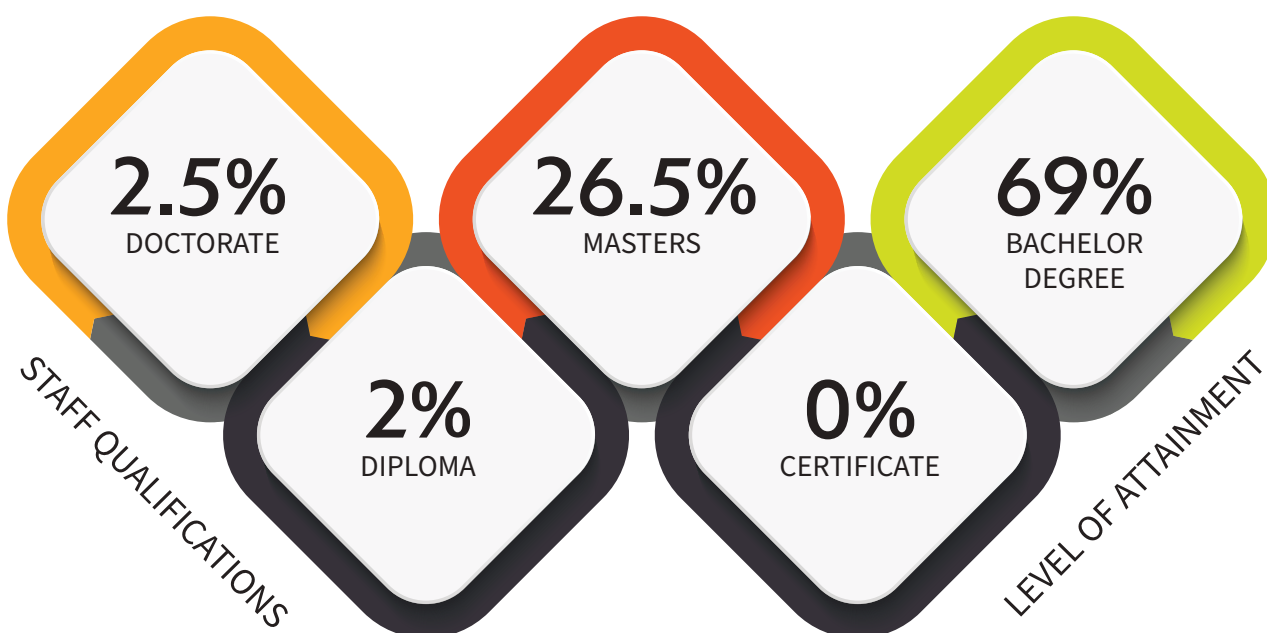
Our Staff.



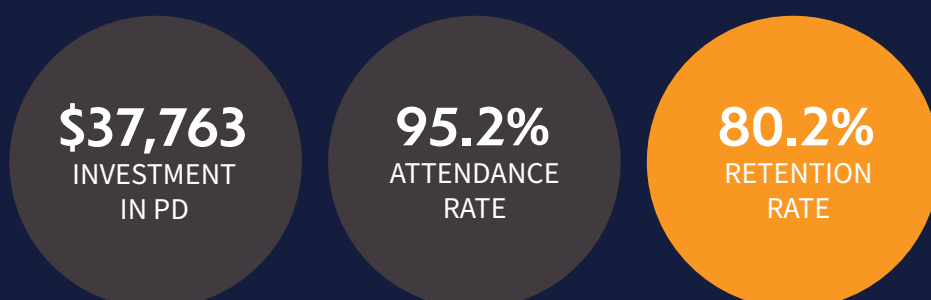
STAFF COMPOSITION

College staff have undertaken professional development activities in assessment development and moderation, as well as significant training in awareness and management of wellbeing and mental health issues.

All staff attend a number of professional development days throughout the year.



TEACHING STAFF



Denotes the average teaching staff attendance for the school, based on unplanned absences of sick and emergency leave periods of up to five days during 2022.

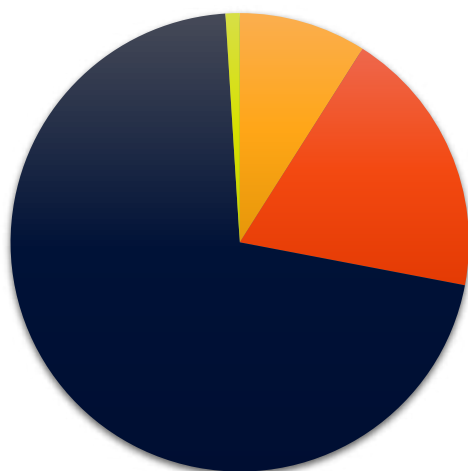
Denotes the retention rate of permanent teaching staff from the previous year.

COLLEGE FINANCES

The following pie charts summarise the recurrent funding and expenses of St John's Anglican College broken down by source.



AUSTRALIAN GOVERNMENT RECURRENT FUNDING	37%
STATE/TERRITORY GOVERNMENT RECURRENT FUNDING	10%
FEEES, CHARGES AND PARENT CONTRIBUTIONS	52%
OTHER PRIVATE SOURCES	1%



STAFF RELATED EXPENSES	67%
OTHER OPERATING EXPENSES	22%
INTEREST	9%
DEPRECIATION	2%

ST JOHN'S ANGLICAN COLLEGE

SCHOOL ADDRESS: Kindergarten to Year 6: Alpine Place, Forest Lake 4078

Years 7 to 12: College Avenue, Forest Lake 4078

SCHOOL SECTOR: Independent - Anglican

YEAR LEVELS OFFERED: Kindergarten to Year 12 (After and Before College Care)

COEDUCATIONAL/SINGLE SEX: Coeducational

Our Graduates.

2022 ATAR RESULTS

MEDIAN
ATAR
81.9

HIGHEST
ATAR
92.25

In 2022, five St John's senior students achieved an A in every subject they studied and ten students achieved 100% on one or more external examinations.

ATAR
99+
4%

ATAR
95+
12%

ATAR
90+
28%

Three students received an ATAR of 99.00 or above, placing them in the top 600 students in Queensland.

Students must give permission to QTAC for schools to be advised of ATARs. Not all students in the 2022 Year 12 cohort have done so.

OUTCOMES FOR OUR 2022 YEAR 12 COHORT

Number of students who received a Senior Education Profile (SEP)		95
Number of students awarded a Queensland Certificate of Education (QCE)		89
Number of students awarded a Queensland Certificate of Individual Achievement (QCIA)		0
Number of students awarded an International Baccalaureate Diploma (IBD)		0
Number of students receiving a Senior Statement only		6
Number of students awarded one or more VET qualifications		30
Number of students who are completing/completed a school-based apprenticeship or traineeship (SAT)		0
Number of students awarded a VET qualification:		
Certificate I		3
Certificate II		7
Certificate III		17
Certificate IV		7
Diploma		0
Advanced Diploma		0



95
OF YEAR 12
STUDENTS
IN 2022

62
OF
RESPONSES
RECEIVED

65.3%
PERCENTAGE
RESPONSE
RATE

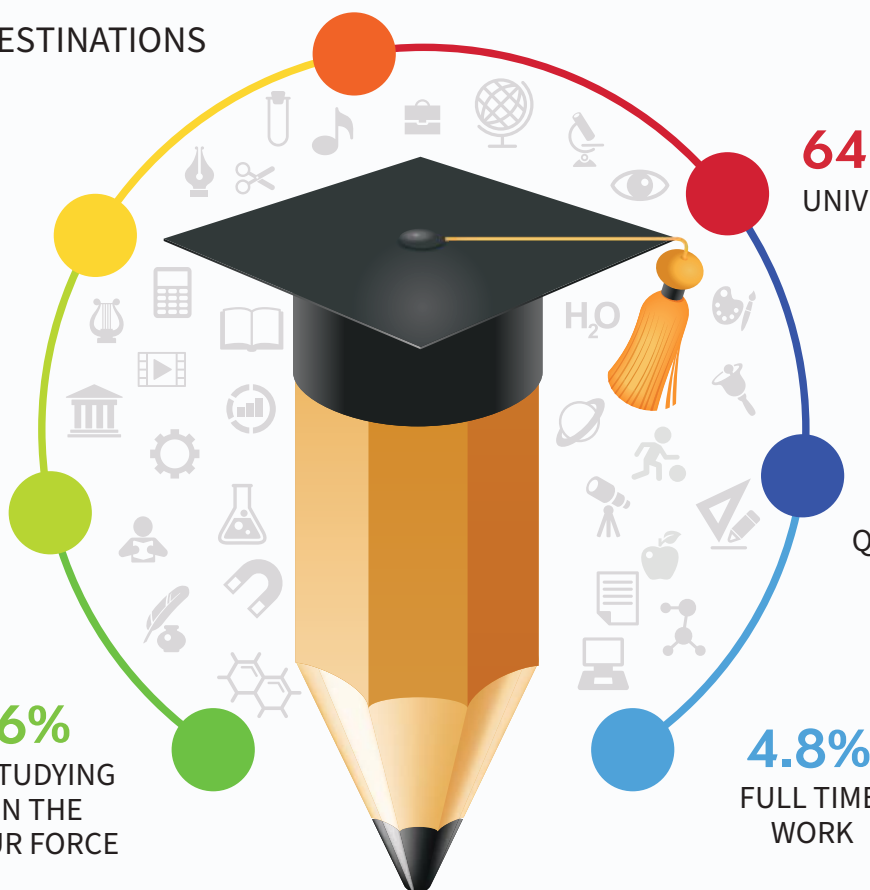
SCHOOL
RESPONSE
RATE TO THE
NEXT STEPS
SURVEY

2022 GRADUATE DESTINATIONS

17.7%
PART TIME
WORK

3.2%
SEEKING
WORK

1.6%
NOT STUDYING
OR IN THE
LABOUR FORCE



64.5%
UNIVERSITY

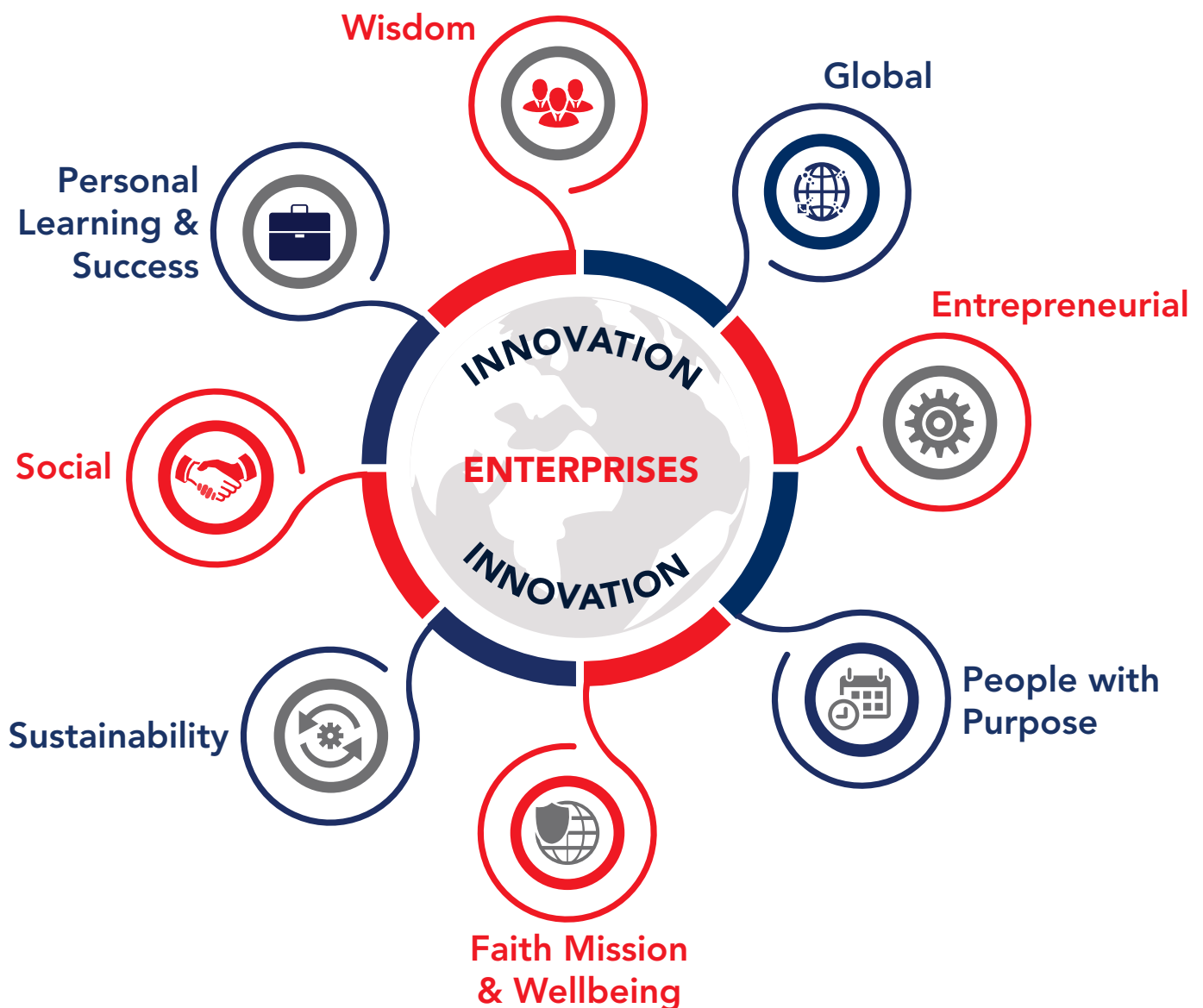
8.1%
VET
QUALIFICATION

4.8%
FULL TIME
WORK

Our Strategic Direction.

ST JOHN'S ENTERPRISE MODEL

The College values of **FAITH, HOPE, LOVE, COURAGE, COMMUNITY** and **JUSTICE** are all underpinned by eight enterprises that highlight the strategic intentions for St John's.



These enterprises create opportunities to respond to the challenges of today and highlight initiatives to anticipate future change. The strategies are agile in nature and positioned to be responsive in a changing world.



PERSONAL LEARNING AND SUCCESS ENTERPRISE

To encourage a culture of lifelong learning by developing adaptive learning programs, technologies and professional partnerships in the St John's community

- International Baccalaureate Primary Years Program
- ATAR
- Vocational Education and Training
- SOAR Extension Program (English, Maths, Years 5-10)
- The Rite Journey (Year 9)
- University Headstart Program



GLOBAL ENTERPRISE

To develop a global village that connects, partners and fosters learning and enrichment opportunities for our students and educators.

- Mandarin Chinese (Prep-Year 12)
- German (Years 7 to 9)
- Dragon Boat Racing



SUSTAINABILITY ENTERPRISE

To foster a culture of sustainability where resources are optimised for the benefit of St John's community whilst building and strengthening the foundations for a sustainable and positive future.

- Environmental Club
- Global Conscience Group
- Leo's Club



ENTREPRENEURIAL ENTERPRISE

To foster a culture of collaboration and entrepreneurial spirit through the development of knowledge partnerships.

- STEM Club
- Maker Spaces
- Digi Club
- Tech Club
- Tecrew
- Dell Tecrew



SOCIAL ENTERPRISE

To cultivate a connected and engaged community that shares the importance of St John's values and aspirations in learning.

Parents are encouraged to be involved in their child's education as the College is aware that schools need to work in conjunction with parents to ensure that students are supported.

St John's offers the following ways parents can be actively involved:

- Parent / Teacher interviews
- Information sessions for different year levels
- Open Days
- Special Assemblies

Parents are also encouraged to be involved in the P&F Association, and its subcommittees: Friends of the Arts (FOTA), Supporters of Sport (SoS) and Friends of the School (FoS).

The College communicates with families in a variety of ways:

- Daily Correspondence
- College App
- Ripples Newsletter
- Social Media Channels
- College Yearbook
- Footprints Magazine



FAITH MISSION AND WELLBEING ENTERPRISE

To affirm the relevance and importance of our Anglican mission through nurturing the holistic development of our learning community.

We launched the College's wellbeing framework to the community, staff and students. This is used to develop a program that prepares our students to have the skills to navigate the issues that they will face in life. The Pulse program is used in Years 3-12 to measure wellbeing. This data helps formulate any changes that are made to the wellbeing program. Approximately 50% of the staff are trained on Mental Health First Aid, and Years 8 and 10 students will also undertake training in 2023.

Outdoor Education

- Years 3 to 11 Camp Program
- Duke of Edinburgh's International Award



PEOPLE WITH PURPOSE ENTERPRISE

To foster a professional learning community that is positive, effective and well-resourced, embracing change and striving for excellence in teaching and learning outcomes.

The participation of the teaching staff both in school and external professional development activities during 2022 was 100%.

WISDOM ENTERPRISE



To develop people of good character through the celebration of cultural diversity and intergenerational partnerships with courage and leadership.

Music

- Compulsory Instrumental Music Program (Years 3-7)
- Wind Ensemble (from Year 7, Years 5 and 6 by invitation)
- Jazz Ensemble (from Year 7, Years 5 and 6 by invitation)
- Wind Orchestra (from Year 7, by invitation / audition)
- Jazz Orchestra (from Year 7, by invitation / audition)
- Drumline (by invitation / audition)
- Rockband (by invitation)
- Rockband 2 (by invitation)
- Corelli Strings (Years 3 and 4)
- Bellissimo Strings (Years 5 and 6, Year 4 by invitation)
- Bellissimo Chambers Strings (Years 5 and 6, by invitation)
- String Ensemble (from Year 7)
- String Orchestra (from Year 7, invitation only)
- Capriccio Choir (Years 1-3)
- Alpine Singers (Years 4-6)
- Alpine Blast Band (Years 5 and 6, by invitation)
- Chorale (from Year 7)
- Bella Voce (from Year 7, by audition)
- Fella Voce (from Year 7, by audition)
- Private instrumental music lessons available from Year 7
- Musical (every two years, Years 6-12)

Sport

Participation in The Associated Schools (TAS) Sporting Association (Years 7-12) including Cricket, Rugby Union and Soccer (boys only), Netball, Hockey and Touch Football (girls only), Volleyball, Basketball, Tennis, Swimming, Cross Country and Athletics.

Participation in the Junior TAS Sporting Association (Years 4-12) including Swimming, Hockey, Cricket, Cross Country, Netball, Rugby Union, Athletics, Touch Football, Soccer, AFL, Basketball (Years 5 and 6 only), as well as:

- Skills Development Programs (Years 2 to 3)
- Association with the Richland Lions Football Club
- Association with Auskick
- Football, Volleyball and Hockey Academies
- School Representation at District, Regional and State levels in Cricket, Hockey, Cross Country, Squash, Football, Swimming, Futsal, Athletics

Clubs and Activities

- Art Club
- Chess Club
- Reading Club
- Dance Club
- Drama Troupe
- Running Club
- Debating



ST JOHN'S

Anglican College

St John's Anglican College

Junior School
Kindergarten to Year 6
Alpine Place, Forest Lake QLD 4078
07 3372 0888

Middle and Senior School
Years 7 to 12
College Avenue, Forest Lake QLD 4078
07 3372 0111

PO Box 4078 Forest Lake QLD 4078
ABN 14 060 936 576 CRICOS Provider #01406C

stjohnsanglicancollege.com.au