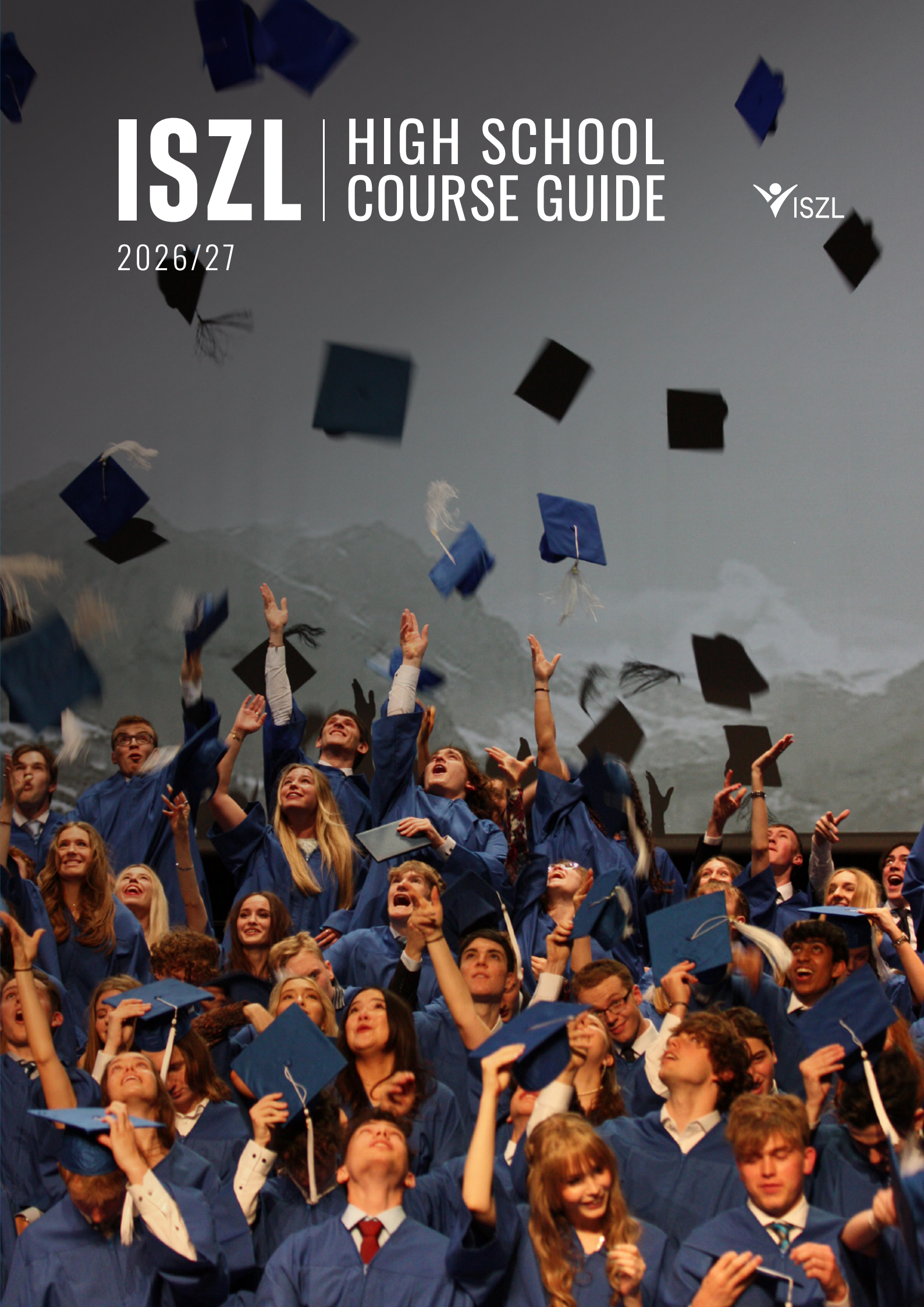


ISZL | HIGH SCHOOL COURSE GUIDE

2026/27



OUR GUIDING PRINCIPLES

OUR MISSION

WE ARE A COMMUNITY OF LEARNERS
determined to make the world, or our corner of it,
A BETTER, KINDER PLACE.

*We reflect our values in everything we do
so that we make the most of
OPPORTUNITIES AND CHALLENGES
in a spirit of enthusiastic inquiry.*

OUR VISION

We help every student turn their learning
INTO ACTION, CREATING THE OPPORTUNITY
to stretch themselves further
and achieve more than they believe possible.

OUR VALUES

WE RESPECT. WE MOTIVATE. WE ACHIEVE.

CONTENTS

HIGH SCHOOL OVERVIEW

Learning at ISZL	06
IB Middle Years Programme	08
Curriculum Pathways	10
ISZL High School Programme	12
IB Diploma Programme	14
Programme Comparison	16
Academic Course Comparison	18
Caring for the Whole Student	20
Online and Self-Study Courses	22
Graduation Requirements	24
Course Selection and Scheduling	25

COURSE DESCRIPTIONS

The Core	28
Personal Development Programme	30
Arts	34
Design	40
Language and Literature	44
First Language Programme	50
Language Acquisition	54
English as an Additional Language	60
Humanities	62
Mathematics	68
Physical Education	74
Science	76

FOUR YEAR PLANNER	84
-------------------	----

© INTERNATIONAL SCHOOL OF ZUG AND LUZERN

Riverside Campus, 6331 Hünenberg, Switzerland, T +41 (0)41 768 2950, www.iszl.ch

The High School Course Guide is available in print and electronic form.

AP® is a trademark owned by the College Board, which is not affiliated with, and does not endorse, the ISZL High School Course Guide

Photography: Alex Tat, Irene Haaima, Yuri Schmid

Designer: Carla Ladau

Printer: Multicolor Print AG



INTRODUCTION TO THIS GUIDE

At the International School of Zug and Luzern (ISZL), we are committed to providing a flexible, personalised, and holistic education that supports and challenges every student. This Course Guide offers an overview of our curriculum, departmental philosophies, and the learning pathways available in the High School. Together, these elements create an inspiring learning experience that helps each student achieve their goals for further education and personal growth. While this guide outlines the key information, it cannot include everything. If you have questions or would like to learn more, please reach out to the relevant members of our team – we are always happy to help.

CONTACTS FOR MORE INFORMATION

KELLI MEEKER

IB Coordinator

kelli.meeker@iszl.ch

Contact for questions about the Middle Years Programme (MYP), the IB Diploma Programme (IBDP), and course choices in Grades 9–12.

ROBERT SUGDEN

High School Programme Coordinator

robert.sugden@iszl.ch

Contact for questions about the High School Programme, Advanced Placement®, and BTEC qualifications.

LOUISA RADFORD

**High School Assistant Principal
(Grades 9 and 10)**

louisa.radford@iszl.ch

Contact for questions about Grades 9–10 and the Personal Development Programme.

PHILIP BRUCE

**High School Assistant Principal
(Grades 11 and 12)**

philip.bruce@iszl.ch

Contact for questions about Grades 11–12, the course selection process, course availability, and timetabling.

LINSEY LAWRENCE

High School Principal

linsey.lawrence@iszl.ch

Contact for general enquiries about the High School experience.

MARIA VOUTOS

Deputy Director

maria.voutos@iszl.ch

Contact for general enquiries about Whole School learning philosophy.

HIGH SCHOOL OVERVIEW

LEARNING AT ISZL

We take pride in offering a flexible and inclusive academic programme. As an International Baccalaureate® (IB) Continuum World School, ISZL offers the Primary Years, Middle Years, and Diploma Programmes. In addition, we provide Advanced Placement® (AP), BTEC, and ISZL-designed courses to ensure that every student can build a personalised pathway that best supports their learning. Across all courses, our goal is to develop students who are successful, internationally minded, creative, and environmentally responsible.

ISZL'S LEARNING PRINCIPLES

ISZL is committed to understanding the conditions in which every student can succeed. The following principles guide how we design and facilitate learning, both in the classroom and beyond.

AT ISZL, LEARNING IS:

Centred on the Learner

Every student brings their own unique set of skills and experiences. We empower them to take responsibility for their learning and growth.

Meaningful

Our students engage with learning that is active, purposeful, and authentic. They connect classroom knowledge with real-world applications.

Challenging

We maintain high expectations, encouraging students to reach their potential while keeping them engaged and motivated.

Emotional

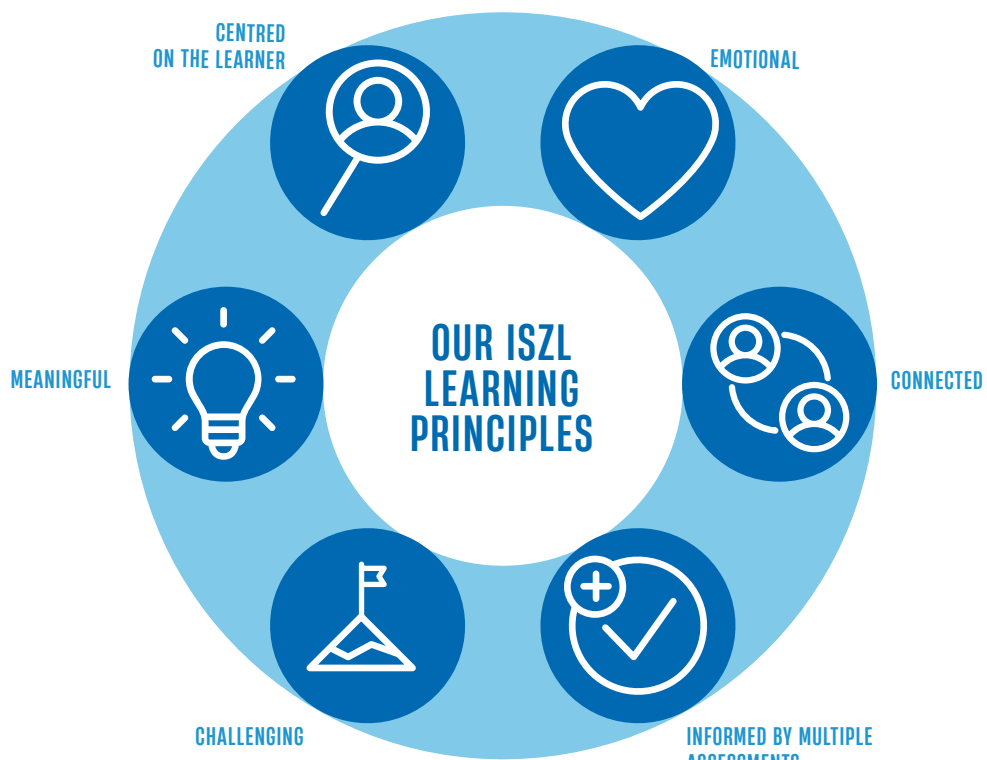
We support students in managing emotions and building empathy, ensuring they thrive both academically and socially.

Informed by Multiple Assessment Approaches

Our assessment strategies provide valuable feedback to guide both students and teachers towards improvement.

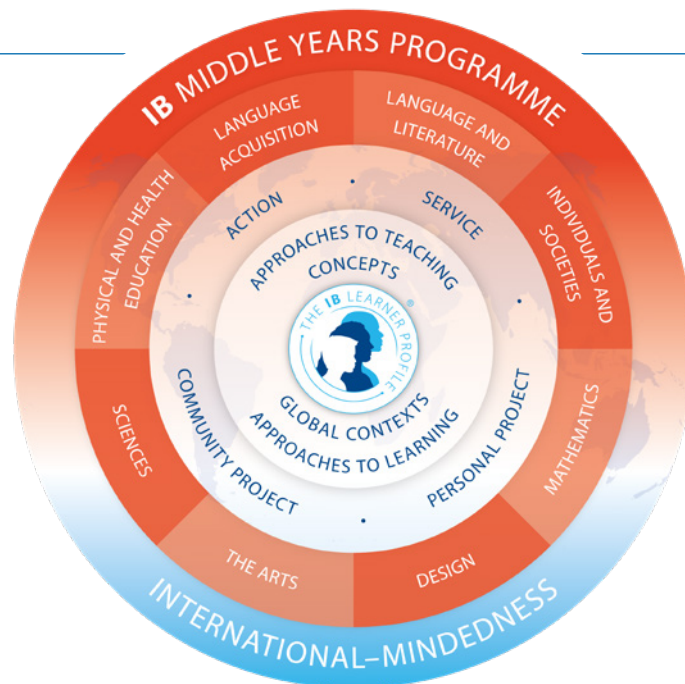
Connected

Learning is most effective when students collaborate and learn from each other, sharing ideas and perspectives to deepen their understanding.



IB MIDDLE YEARS PROGRAMME

GRADES 9 AND 10



ISZL's Middle School academic programme, guided by the International Baccalaureate® (IB) Middle Years Programme (MYP), supports growth and prepares students for a constantly changing world. The MYP framework, taught in Grades 6–10, goes beyond traditional academics to encourage curiosity, creativity, and personal responsibility.

Students study eight to nine subjects, building both depth and breadth of knowledge. Learning is concept-driven, helping students connect ideas, understand real-world applications, and develop key Approaches to Learning (ATL) skills — Communication, Social, Self-Management, Research, and Thinking.

Our Learning Principles ensure that learning is meaningful, relevant, and engaging. Students are encouraged to ask questions, reflect, and explore global

issues such as sustainability, technology, and social justice, building intercultural understanding and digital citizenship.

Service learning is central to the MYP, enabling students to contribute to their communities in caring and purposeful ways. Beyond the MYP, students explore a wide range of opportunities, including languages, music, cross-curricular projects, and hands-on experiences.

The MYP at ISZL is also intentionally designed to support both of our Grade 11 and 12 pathways: the IB Diploma Programme (IBDP) and ISZL's High School Programme, each of which leads to the ISZL High School Diploma. The skills and conceptual understanding developed in the MYP give students a strong foundation for success in both pathways, helping them enter the final years of High School with a clear sense of how they learn best.

IB MIDDLE YEARS PROGRAMME COURSE STRUCTURE

COMPLETE TOTAL OF **9** COURSES

COMPLETE
7

PRESCRIBED COURSES

MYP ENGLISH A: LANGUAGE & LITERATURE

MYP GERMAN LANGUAGE ACQUISITION: PHASE 1-6*

or

MYP GERMAN A: LANGUAGE & LITERATURE*

MYP INDIVIDUALS & SOCIETIES

MYP SCIENCES

MYP MATHEMATICS*

or

MYP MATHEMATICS EXTENDED*

MYP DESIGN

PHYSICAL EDUCATION

COMPLETE
1

SECOND LANGUAGE COURSE CHOICE

MYP FRENCH LANGUAGE ACQUISITION: PHASE 2-5

or

MYP SPANISH LANGUAGE ACQUISITION: PHASE 1-5

or

VARIOUS FIRST LANGUAGE PROGRAMME OPTIONS

COMPLETE
1

ARTS COURSE CHOICE

MYP THEATRE

or

MYP MUSIC

or

MYP VISUAL ARTS

or

MYP MEDIA ARTS (GRADE 10 ONLY)

PROGRAMME NOTES

Students complete at least six courses each year, meeting the following MYP requirements:

- English A: Language & Literature
- At least one MYP Language Acquisition course
- Individuals & Societies
- Sciences
- Mathematics or Mathematics Extended

- At least one Arts course:
Design, Visual Arts, Theatre, or Music
- Plus: Service as Action and the Personal Project

Learning Support and English as an Additional Language (EAL) are usually offered instead of a second language acquisition course.

*Course placements are determined by the school.

CURRICULUM PATHWAYS AT ISZL GRADES 11 AND 12

There are two main pathways to earning the ISZL High School Diploma and graduating from ISZL: the International Baccalaureate® (IB) Diploma Programme (IBDP) or the ISZL High School Programme (HSP).



ALL LEAD TO ISZL HIGH SCHOOL DIPLOMA

AP® COURSES

AP® courses are rigorous, college-level courses recognised by universities around the world. They are completed in one year and assessed through an external final exam.

IB DIPLOMA COURSES

International Baccalaureate (IB) Diploma courses are two year classes and are externally assessed by the IB through a combination of coursework and final examinations.

ISZL COURSES

Some **ISZL courses** prepare students for future AP® study, for example, Biology before AP® Biology. Optional preparation courses may also be available for students who wish to strengthen prerequisite skills and knowledge.

INNOVATION COURSES

Innovation courses take a project-based, experiential approach, helping students develop an entrepreneurial mindset. These courses encourage creative problem-solving and real-world application, with each student building a university- or career-ready portfolio of innovative projects, products, or services. There are no exams in these courses.

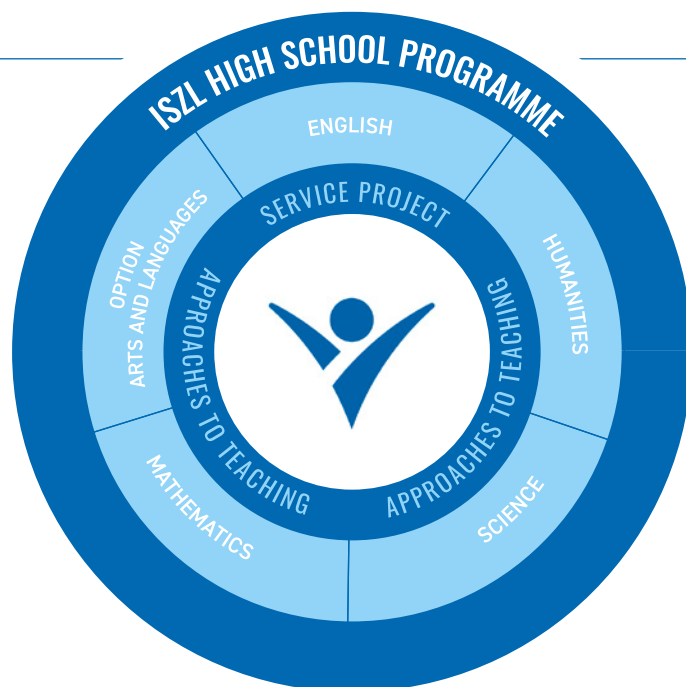
BTEC COURSES

ISZL also offers a **BTEC Diploma** in Creative Media, combining production projects, business experience, and academic theory to provide a specialist, work-related qualification.



ISZL HIGH SCHOOL PROGRAMME

GRADES 11 AND 12



We offer a diverse and flexible High School Programme that allows every student to find a path aligned with their interests, strengths, and future aspirations. In Grades 11 and 12, students can pursue rigorous and personalised pathways that encourage deeper exploration and specialisation.

Our High School Programme is broad and challenging, combining academic depth with real-world application. Students can choose between five or six courses per year from Advanced Placement® (AP®) courses,

ISZL-designed courses (including Innovations options), the BTEC Diploma in Creative Media, and IB Diploma courses. Learning extends beyond the classroom through service learning projects and entrepreneurial opportunities that help students turn their ideas into action. Whether students complete the IB Diploma Programme or the ISZL High School Programme, all graduates earn the ISZL High School Diploma — an internationally recognised qualification that opens doors to universities worldwide.

ISZL HIGH SCHOOL PROGRAMME

COMPLETE AT LEAST **5** COURSES EACH YEAR

OPTION

COMPLETE
AT LEAST
0-3

AP® FRENCH LANGUAGE & CULTURE
AP® GERMAN LANGUAGE & CULTURE
AP® SPANISH LANGUAGE & CULTURE
AP® ART & DESIGN

MUSIC: INNOVATIONS IN TECHNOLOGY

GERMAN HIGH INTERMEDIATE
FRENCH HIGH INTERMEDIATE
SPANISH HIGH INTERMEDIATE
STUDIO ART
CREATIVE MEDIA

IB FRENCH B
IB GERMAN B
IB MUSIC
IB SPANISH B
IB VISUAL ART

BTEC DIPLOMA IN CREATIVE MEDIA

SCIENCE

COMPLETE
AT LEAST
1

AP® BIOLOGY
AP® CHEMISTRY
AP® ENVIRONMENTAL SCIENCE
AP® PHYSICS 1
AP® PHYSICS 2
AP® PSYCHOLOGY

BIOLOGY
CHEMISTRY
COMPUTER SCIENCE FUNDAMENTALS
PHYSICS

IB BIOLOGY
IB CHEMISTRY
IB COMPUTER SCIENCE
IB ENVIRONMENTAL SYSTEMS & SOCIETIES

HUMANITIES

COMPLETE
AT LEAST
1

AP® COMPARATIVE GOVERNMENT & POLITICS
AP® MICROECONOMICS
AP® MACROECONOMICS
AP® EUROPEAN HISTORY
AP® HUMAN GEOGRAPHY
AP® PSYCHOLOGY

HUMANITIES: GLOBAL INNOVATIONS

IB HISTORY
IB ENVIRONMENTAL SYSTEMS & SOCIETIES
IB ECONOMICS
IB GEOGRAPHY
IB GLOBAL POLITICS
IB LANGUAGE & CULTURE

BTEC DIPLOMA IN CREATIVE MEDIA

LANGUAGE

COMPLETE
AT LEAST
1

AP® ENGLISH LITERATURE & COMPOSITION
AP® ENGLISH LANGUAGE & COMPOSITION

ENGLISH: INNOVATIONS IN COMMUNICATION

ENGLISH LANGUAGE & LITERATURE

IB ENGLISH LITERATURE
IB ENGLISH LANGUAGE & LITERATURE
IB LANGUAGE & CULTURE

BTEC DIPLOMA IN CREATIVE MEDIA

MATHS

COMPLETE
AT LEAST
1

AP® CALCULUS AB
AP® CALCULUS BC
AP® STATISTICS

DATA AND STATISTICAL PRACTICES
PRE-CALCULUS
MATHEMATICS 11

IB MATHEMATICS: ANALYSIS & APPROACHES
IB MATHEMATICS: APPLICATIONS & INTERPRETATION

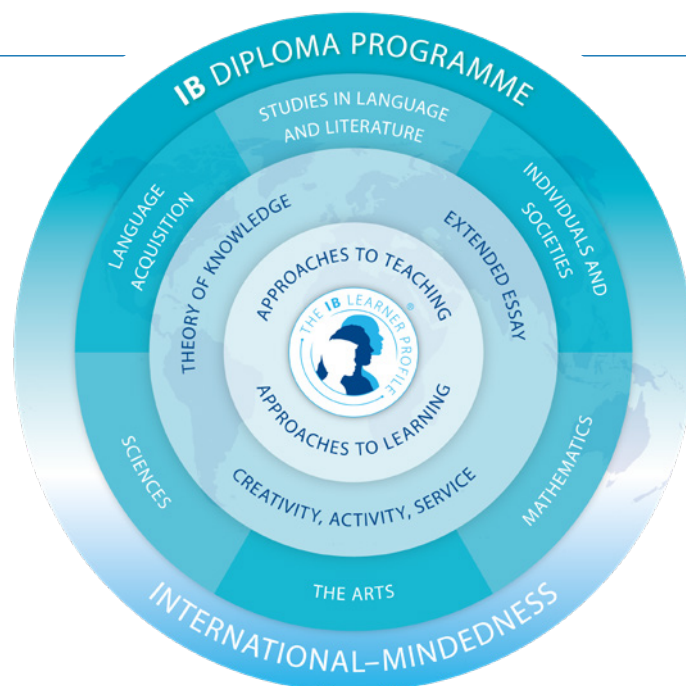
PLUS 1 SERVICE PROJECT PER YEAR

PROGRAMME NOTES

- A minimum of one year in each of the following subjects: English, Mathematics, Science, and Humanities
- Two years of English are recommended
- One Service Project each year
- Five or six courses per year
- A maximum of one online course per year

IB DIPLOMA PROGRAMME

GRADES 11 AND 12



The IB Diploma Programme is designed to develop inquiring, knowledgeable, and compassionate young people who strive to create a better, more peaceful world through intercultural understanding and respect. This internationally-focused programme inspires students to be active, lifelong learners who understand and appreciate diverse perspectives. It includes both academic challenges and opportunities for personal growth through the Core components: Theory of Knowledge (TOK), the Extended Essay (EE), and Creativity, Activity, and Service (CAS). These elements help students develop essential life skills and the ability to apply their academic knowledge in real-world situations. In addition to the "Core," students in the IBDP study six subjects across various disciplines, ensuring a well-rounded education.

These subjects include:

- Two courses from **Language and Literature** and **Language Acquisition** (Groups 1 and 2)
- At least one course from **Individuals and Societies** (Group 3)
- At least one course from **Sciences** (Group 4)
- One course from **Mathematics** (Group 5)
- One course from the **Arts** (Group 6), or another subject from Groups 1–4

Interdisciplinary subjects such as Environmental Systems & Societies and Language & Culture offer additional flexibility, allowing students to further specialise while maintaining balance across the programme.

PICK A TOTAL OF 6 COURSES FROM AT LEAST GROUPS 1–5

COMPLETE
2
AT LEAST 1 FROM
GROUP 1

STUDIES IN LANGUAGE & LITERATURE GROUP 1

IB ENGLISH LANGUAGE & LITERATURE
IB GERMAN LANGUAGE & LITERATURE
IB FIRST LANGUAGE A: LITERATURE
SCHOOL-SUPPORTED SELF-TAUGHT (SL ONLY)
IB LANGUAGE & CULTURE (SL ONLY)

LANGUAGE ACQUISITION GROUP 2

IB FRENCH B
IB GERMAN B
IB SPANISH B
IB GERMAN AB INITIO (SL ONLY)

COMPLETE
AT LEAST
1

INDIVIDUALS AND SOCIETIES GROUP 3

IB ECONOMICS
IB ENVIRONMENTAL SYSTEMS & SOCIETIES
IB GEOGRAPHY
IB GLOBAL POLITICS
IB HISTORY
IB LANGUAGE & CULTURE (SL ONLY)

COMPLETE
AT LEAST
1

SCIENCE GROUP 4

IB BIOLOGY
IB CHEMISTRY
IB COMPUTER SCIENCE
IB ENVIRONMENTAL SYSTEMS & SOCIETIES
IB PHYSICS

COMPLETE
1

MATHS GROUP 5

IB MATHEMATICS: ANALYSIS & APPROACHES
IB MATHEMATICS: APPLICATIONS & INTERPRETATION

COMPLETE
1

ARTS GROUP 6

IB MUSIC
IB VISUAL ART

OR 1 ADDITIONAL COURSE FROM GROUPS 1-4

Note:

In addition to our robust in-person courses, students may also select from a range of online courses through an authorised external provider at an additional cost.

PROGRAMME REQUIREMENTS

Choose three **Higher Level (HL)** and three **Standard Level (SL)** courses.

Only one online course is allowed.

Your six courses must cover at least Groups 1–5.

- Environmental Systems & Societies may count as a Group 3 and/or Group 4 course.
- Language & Culture may count as a Group 1 and/or Group 3 course.
- Plus the Core: Extended Essay, Theory of Knowledge, and CAS

ISZL PROGRAMME COMPARISON

GRADES 11 AND 12

Both programmes provide students with the opportunity to meet the graduation requirements that allow them to receive an accredited High School Diploma with worldwide recognition. The term “programme” describes the overall approach and required combinations of a collection of courses. Each of the two programmes available at ISZL have aspects which they share, but also aspects which make them distinct. Please be advised that there are additional costs for all examinations and accredited qualifications. Contact the relevant programme coordinator for more details.

One of the greatest strengths of the HSP is the flexibility it provides. Beyond the four graduation requirements (Mathematics, English, Science, and Humanities), students have the freedom to design a programme that aligns with their goals. Some students mix and match courses to develop a broad skill set. For example, combining AP® analytical thinking, Innovation entrepreneurship skills, and BTEC technical expertise.

Others specialise, such as:

- **Taking six AP® Science courses** or three AP® Mathematics courses.
- **Choosing five AP® Humanities courses** for a deep dive into social sciences.
- **Focusing on Visual Arts and BTEC Media Production** for a creative pathway.
- **Studying three different languages** to develop global fluency.

KEY SIMILARITIES AND DIFFERENCES BETWEEN THE IBDP AND HIGH SCHOOL PROGRAMME

SIMILARITIES:

- Core literacies: Both programmes require English, Math, Science, and Humanities
- Completion = ISZL High School Diploma (American style)
- Range of courses: Requirement for Maths, English, Science, and Humanities
- Engaging with local or global community with service learning

DIFFERENCES:

	IB DIPLOMA PROGRAMME (IBDP)	ISZL HIGH SCHOOL PROGRAMME (HSP)
GRADUATING CERTIFICATE	ISZL High School Diploma and IB Diploma	ISZL High School Diploma
COURSE LOAD	Six courses + Theory of Knowledge	Five or six courses per year
COURSE DECISIONS	Six subject area courses at the start of the programme	Five or six for Grade 11 Five or six for Grade 12
COURSE OPTIONS	23 IBDP courses	22 AP® 3 Innovations courses 12 ISZL courses 1 BTEC course All IBDP certificates
TYPE OF COURSE	All IB Diploma	Advanced Placement® (AP®) BTEC Innovations ISZL courses IB Diploma certificates
LENGTH OF COURSE	Two year	One year and two year
AWARDING BODY	International Baccalaureate®	College Board (AP®) Pearson Education (BTEC) ISZL IB (Diploma Certificates)
ASSESSMENT STYLE	Combination of coursework and external exams	AP® (100% exams except Art) BTEC and ISZL Innovations (100% coursework) Mix of assessment styles in ISZL courses and IBDP certificates
LANGUAGES	A second language requirement (Language acquisition or a Bilingual Diploma)	No language requirement
CORE COMPONENTS	EE, TOK and CAS	Service Learning

ACADEMIC COURSE COMPARISON

ACADEMIC COURSE COMPARISON

A "course" is characterised by its approach, style of study and the methods of internal and external assessment for an individual, specific discipline.

	IB DIPLOMA COURSES	AP® COURSES	BTEC COURSES	ISZL COURSES	INNOVATION COURSES
YEARS OF STUDY	Two	One	Two	One or two	One or two
HOURS A COURSE MEETS EACH WEEK	Three or four hours	Four hours	Four or eight hours	Four hours	Four hours with independent project-based study
TYPICAL ASSESSMENTS TO ACHIEVE EXTERNAL QUALIFICATIONS	Coursework (20-100%) Two or three exams varying from 45 minutes to 150 minutes Arts courses are portfolio-based	Three hour exam Mixture of multiple choice, short and medium-length answer responses AP® Art & Design assessed by portfolio	Ongoing coursework	No external qualifications	No external qualifications
ISZL COURSE GRADE ASSESSMENT STYLES	IB coursework, tests, quizzes, IB style questions, presentations, internal exams	Regular tests, quizzes and practice AP® style questions, presentations, internal exams	Coursework	Assignments, tests, quizzes, coursework, projects	Portfolio, project-based, student-teacher conferencing
COURSE FEES	Approximately CHF160 per course	Approximately CHF150 per exam	Subsidiary Diploma (4 Hours) CHF390 BTEC Diploma (8 Hours) CHF440	No additional cost	No additional cost

DISPELLING COMMON MYTHS

Myth #1: The Alternative to the IB Diploma is just AP® courses

Not true! Only approximately 60% of HSP courses are AP® courses — students also take Innovation, BTEC, ISZL, and IB Diploma Certificate courses, giving them a broad range of options. It is very unusual for students to study AP® courses entirely.

Myth #2: The HSP is easier than the IB Diploma

AP® courses are university college-level courses that are assessed with one exam at the end of the year. They are fast paced, and students need to be ready at the end of Grade 11 to take some of these courses.

BTEC students complete projects for real clients and are held to professional standards of media production to achieve the highest grade. Whilst there are no exams, students are assessed throughout the two year course and must pass every assessment — everything counts!

Innovations students can publish their work externally and solve real world problems, presenting their prototypes to corporate and non-governmental partners.

Whilst a student may have fewer hours in their schedule and study fewer subjects in the HSP compared to the IBDP (20 hours and 5 subjects compared to 23 hours and 7 subjects), if a HSP student chooses 6 subjects in a year, they actually have more hours in class with 24 hours per week.



CARING FOR THE WHOLE STUDENT

WELLBEING

We understand that students excel when they feel safe, valued, and supported. In High School, our approach to wellbeing is holistic, recognising the importance of emotional, social, and physical health. Through strong relationships, dedicated guidance, and a caring community, we help students build the confidence and skills they need to navigate their teenage years and prepare for life beyond school.

We are guided by promoting the four pillars of wellbeing.

- **Awareness** reminds us of the importance of cultivating focus, attention and awareness of ourselves.
- **Insight** reminds us of how self-knowledge of our emotions, thoughts and beliefs shape our experiences and sense of identity.
- **Purpose** reminds us of how to continually explore our core values and deeper motivations to apply ourselves in daily life.
- **Connection** reminds us of how a feeling of care and friendship towards other people promotes supportive relationships and interactions.

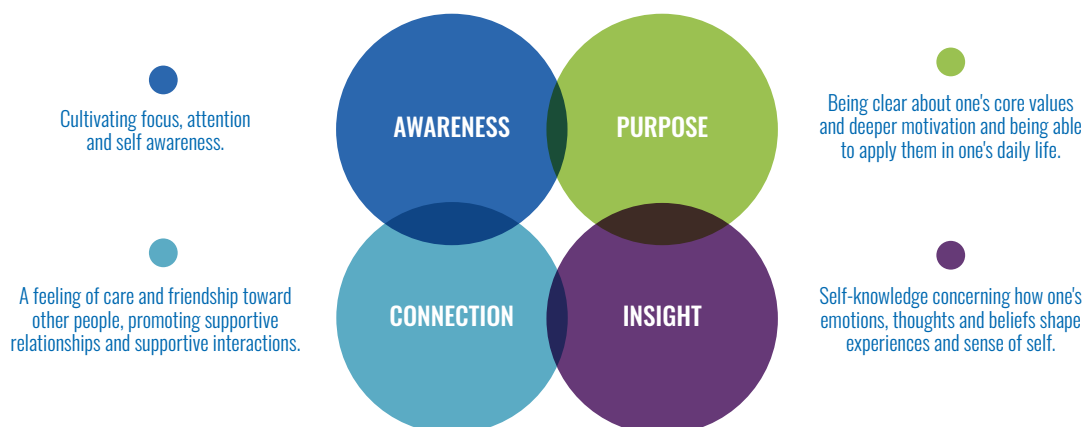
STUDENT SUPPORT SERVICES

We are committed to providing programmes which are accessible to all our students.

Student Support Services at ISZL includes the following departments:

- Counselling
- English as an Additional Language
- Learning Support
- Nursing

In collaboration with school leadership, the Student Support Services team works to ensure that all of our students are provided with the support they need to succeed. When assessing support needs, we take an individualised approach, carefully considering how each student engages with our support services. Our goal is to provide integrated, seamless assistance that fosters their overall development and success.



The role of the Student Support Services Team includes:

- Recommending and/or guiding interventions for students with the focus of increasing independent success and growth within the programme
- Case managing Student Support Plans (SSPs) and Accommodation Plans as appropriate
- Advocating for students and encouraging student self-advocacy
- Educating students, parents/guardians and teachers about a student's educational profile and identified needs
- Supporting subject/classroom teachers to ensure students' needs are being addressed in the classroom
- Communicating student progress and strategies to the parents/guardians to bridge the home-to-school connection
- Meeting regularly with teachers, parents/guardians and school leadership to monitor, adjust and revise support as needed
- Sourcing extra support as and when a student need is identified

MULTI-TIERED SYSTEMS OF SUPPORT (MTSS)

ISZL utilises a Multi-Tiered System of Support (MTSS) to ensure that all students' needs are effectively met.

Within this framework, every student receives Tier 1 support through high-quality, differentiated instruction in the classroom. For those requiring additional assistance, targeted interventions and supports may be provided at Tier 2 or Tier 3, based on individual needs.



3. TIER 3: ONGOING SUPPORT

For the few needing a Student Support Plan or an Accommodation Plan, supported by specialists

2. TIER 2: TIME-BOUND INTERVENTION

For some students with identified needs supported through collaborative teams

1. TIER 1: CORE TEACHING & LEARNING

Designing universally for all students, supported by all

MTSS at ISZL

Data-informed and evidence-based

Scan the QR code to learn more in our Student Support Services Handbook.



ONLINE AND SELF-STUDY COURSES

Online courses give students the opportunity to study subjects that are not currently offered through in-person teaching at ISZL. They offer an engaging and rigorous learning experience, and while some students appreciate the independence, flexibility, and self-paced structure these courses provide, others may find the limited face-to-face interaction and clarity of instructions more challenging. Because of the shorter terms and the nature of online learning, workloads are often higher than in many ISZL-taught courses. To succeed, students need to be motivated, organised, independent, and confident using technology. Each student's progress is monitored regularly by an ISZL teacher to ensure they stay supported and on track. Online course fees are subject to change and are published several months before the start of each course. These costs are in addition to ISZL's standard school fees.

IBDP Pamoja Courses

IB Diploma Programme courses are available through Pamoja Education (pamojaeducation.com). As a guide, Pamoja courses cost approximately €1,600–1,900 per year, over two years.

School-Supported Self-Taught Languages

ISZL provides substantial subsidies for students pursuing self-taught language courses. In most cases, these subsidies cover the majority of costs:

- Year 1: CHF 3,000
- Year 2: CHF 2,000

Virtual High School

AP® and other American-style courses are available through the Virtual High School (vhslearning.org).

Approximate fees are as follows:

- Semester courses: CHF 400–450
- Summer credit recovery courses: CHF 225–275 per course
- AP® courses: additional CHF 60–70

Self-Study Courses: AP® Languages

Students may take the AP® Language & Culture exam in German, French, or Spanish at the end of Grades 10, 11, or 12. In Grade 10, this may be completed as a self-study option; however, we recommend it only for students enrolled in a high-phase Grade 10 MYP language class. To support students, ISZL offers an introductory session on using the Digital Audio Capture (DAC) App for the speaking component of the exam. Before committing to self-study, students must consult with their class teacher and University Advisor, as taking an AP® in Grade 10 may not suit all university pathways.

Self-Study Courses: Other AP® Courses

In some cases, students may take an AP® exam in a subject not offered at ISZL. They should speak with the High School Programme Coordinator to discuss eligibility. Additional costs, including exam invigilation and technical support, are the responsibility of the candidate.

FREQUENTLY ASKED QUESTIONS

How many online courses can I take each year?

You may take one online course per year.

Who is best suited to online courses?

Online courses work best for students who are highly motivated, organised, and independent learners.

How much time do online courses require?

Online learning demands significant independent study. Students often spend 15+ hours per week on AP® VHS courses and many additional hours on IB Pamoja courses.

How many students self-study an AP® each year?

Only a very small number of students choose to self-study an AP® course annually.

Should I take an AP® in Grade 10?

Students can graduate with excellent qualifications without taking any AP® courses in Grade 10. Early AP® study may help assess readiness for later programmes, but students should always consult their University Advisor before registering.



GRADUATION REQUIREMENTS

To graduate from ISZL, students must successfully complete the IB Middle Years Programme (MYP) and subsequently either the IB Diploma Programme (IBDP) or the ISZL High School Programme.

Graduation requires the satisfactory completion of the following minimum course expectations:

- **Ten courses** over Grades 11 and 12
- **Six courses** in each of Grades 9 and 10
- **Four years** of Service Project participation
- **Three years** of English, Humanities, Science, and Mathematics (including at least one year of each in Grades 11 or 12)
- **Two years** of Language Acquisition
- **Two years** of Arts, Design, or Physical Education

Students may take no more than one online course per year.

To account for individual circumstances, the High School Principal may grant minor exceptions — for example, for students transferring from another school in their final two years or for those in the Learning Support programme.

GRADES 9 AND 10

Satisfactorily complete a minimum of six courses per year for two years:

- Mathematics | two years
- English | two years
- Science | two years
- Humanities | two years
- Language Acquisition | two years
- Arts or Design or Physical Education | two years
- Service Projects | two years
- MYP Personal Project | complete

GRADES 11 AND 12

Satisfactorily complete a minimum of five courses per year for two years:

- Mathematics | one year
- English | one year
- Science | one year
- Humanities | one year
- Service Projects | two years

COURSE SELECTION AND SCHEDULING PROCESS

The course selection process helps each student design a personalised learning pathway that reflects their interests, strengths, and future goals. While this overview outlines key steps and timelines, course decisions are best made in conversation between students, parents, and University Advisors.

FREQUENTLY ASKED QUESTIONS

When do Middle School students choose their Grade 9 courses?

Grade 9 continues the MYP curriculum from Middle School. Students only need to choose:

- One Arts subject: Visual Art, Drama, or Music
- A second language (for those leaving the EAL programme): French, Spanish, or a First Language option

This process takes place in February and March of Grade 8.

When do High School students choose their courses for the following year?

Course selection begins with presentations for students and parents in November and December. After Winter Break, Grade 10 and Grade 11 (non-IB) families meet individually with University Advisors to finalise choices. The process concludes by Spring Break (March/April).

How do new students select their courses?

Our Admissions team guides new families through placement tests and course selection via the New Family Hub on our Parent Portal. For students entering Grades 11 or 12, University Advisors follow up after placement testing, typically in June or early August, to provide individual guidance.

How can students learn more about courses and requirements?

From November to March, presentations and departmental sessions help students and parents understand course options, curriculum philosophies, and university recognition. Students in Grade 10 receive detailed overviews during class time. Programme Coordinators and University Advisors are also available for one-to-one discussions.

How are student timetables constructed?

After students submit their choices in March, the school builds the timetable by balancing over a thousand individual data points. Our goal is to meet as many preferences as possible while ensuring that required courses — such as second-year IB classes — are prioritised. To ensure high-quality learning experiences, each course must meet a minimum class size of eight students in order to run. Once the timetable reaches over 90% effectiveness, we review adjustments and any remaining conflicts to ensure the best possible fit for all students. While some compromises are unavoidable, most students receive their preferred courses.

Can students change their timetables?

Students may request changes until the end of the second week of school, with approval from their University Advisor and as long as no timetable conflicts exist. Further changes are possible until the final week of September, but require approval from the Assistant Principal, University Advisor, Programme Coordinator, and teacher. After this, changes are only made in exceptional cases or at the school's request. IB students may shift between Standard and Higher Level courses later in the year if approved by their teacher and Programme Coordinator.

What if a student is unsure about returning next year?

Students should still complete the course selection process. It's easier to remove selections later than to add them once scheduling is complete, and it helps students plan ahead, especially if moving to another school.

COURSE DESCRIPTIONS

THE CORE

All learning pathways offered at ISZL contain core components.

MIDDLE YEARS PROGRAMME (GRADES 9 AND 10)

The Middle Years Programme (MYP) requires all students to engage with understanding who they are and how they connect with the world around them. Through Service as Action and the Grade 10 Personal Project, students apply their learning to real-life contexts and reflect on their growth as learners and global citizens. To support this, students take part in the Core: Principled Innovation Programme, which helps them develop key Approaches to Learning (ATL) skills and an understanding of their character strengths, values and principles.

IB DIPLOMA PROGRAMME (GRADES 11 AND 12)

The IB Diploma Programme (IBDP) includes a core of three interrelated components:

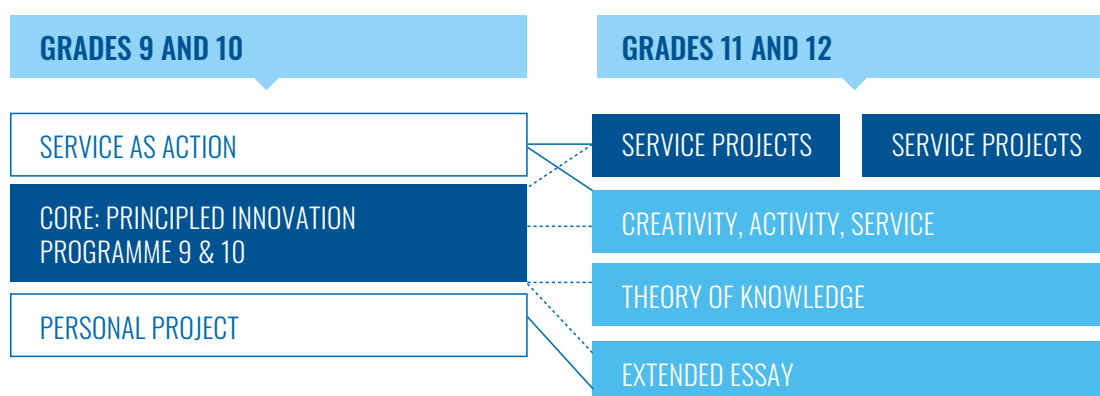
- **Theory of Knowledge (TOK):** Encourages students to explore how we know what we know and make connections across their subjects.
- **Creativity, Activity, Service (CAS):** Inspires students to find balance, pursue passions, challenging projects and contribute meaningfully to their community.
- **Extended Essay (EE):** An independent research paper of up to 4,000 words that fosters academic writing, reflection, and self-awareness.

Together with the six subjects studied in the IB Diploma, the core aims to develop students' ATL skills, helping them become reflective and engaged learners ready for life beyond school.

ISZL HIGH SCHOOL PROGRAMME

The ISZL High School Programme offers a flexible and personalised pathway tailored to individual interests and goals. The only required element of the High School Programme core is completing at least one service project each year, reinforcing our commitment to community engagement. While ATL skills are taught in all courses, there are no mandatory extended essays or projects. However, students may request to complete an Extended Essay through the IBDP Coordinator if they wish to pursue academic research in greater depth. Many ISZL courses include experiential and project-based learning, encouraging students to take action on issues that matter to them, whether developing a business plan, designing a prototype, or leading a community initiative.

THE CORE PROGRESSION



Theory of Knowledge Grades 11 and 12 • 2 years • IBDP Requirement

IB

Theory of Knowledge (TOK) challenges you to explore how knowledge is produced, evaluated, and used across different fields. The course encourages you to become an active, reflective learner who can question assumptions, analyze evidence, and engage thoughtfully with complex ideas. You will explore how knowledge is produced, shared and acquired across five key areas: the natural sciences, human sciences, mathematics, the arts and history. In our fast-paced, digitally driven world, TOK is a toolkit for making meaningful interdisciplinary connections and for critically evaluating our relationship with knowledge by explicitly asking: how do we know what we know?

TOK assessment is 100% coursework, consisting of an exhibition (33%) and an essay (67%), both externally assessed by the IB.

Core: Principled Innovation Programme 9 Grade 9 • 1 year

ISZL

See course listing on page 32.

Core: Principled Innovation Programme 10 Grade 10 • 1 year

ISZL

See course listing on page 32.

PERSONAL DEVELOPMENT PROGRAMME

The Personal Development Programme (PDP) is a key part of supporting students in their growth as confident and well-rounded individuals. In the High School, this takes place through Homeroom sessions, the Core: Principled Innovation Programme, and the Futures Programme, which together provide intentional time and structure for personal development. Each year, the PDP is reviewed to ensure it continues to meet student needs and reflect our commitment to wellbeing. The content and structure evolve based on student feedback, interests, and priorities, and are guided by ISZL's Pillars of Wellbeing Framework.

Core: Principled Innovation Programme

The Core: Principled Innovation Programme helps students live ISZL's mission, vision, and values through purposeful and reflective learning experiences. The programme encourages students to develop a deeper understanding of their identities, values, and motivations, to consider how they contribute to their communities, and to take principled, sustainable action. The Core also supports students in building the skills needed for key MYP experiences, including the Personal Project, Service as Action, Work Experience, and Personal Development Weeks. Students in Grade 9 participate in a teacher-led programme with two lessons per week, focusing on skill development and reflection. In Grade 10, students apply these skills through a collaborative, creative, action-based, or service project of their choice. In Grades 11 and 12, community and service initiatives are student-led and guided by the school. Students work independently on their chosen projects, supported by their homeroom teachers.

Personal Development Week (PDW)

Each year, students take part in a residential Personal Development Week designed to extend learning beyond the classroom, with grade-level trips across Europe and beyond. These shared experiences focus on developing teamwork, leadership, and a deeper awareness of social and environmental responsibility, laying the foundation for project-based service learning throughout the year. By building independence, strengthening friendships, and creating meaningful connections with staff, these trips help set a positive tone for the year ahead, while supporting learning in real-world settings. We are also fortunate to have a school chalet in Wengen, which hosts a variety of trips throughout the year. These include hikes for The Duke of Edinburgh International Award, instrumental retreats, and ski trips.

FREQUENTLY ASKED QUESTIONS

Can I choose my homeroom?

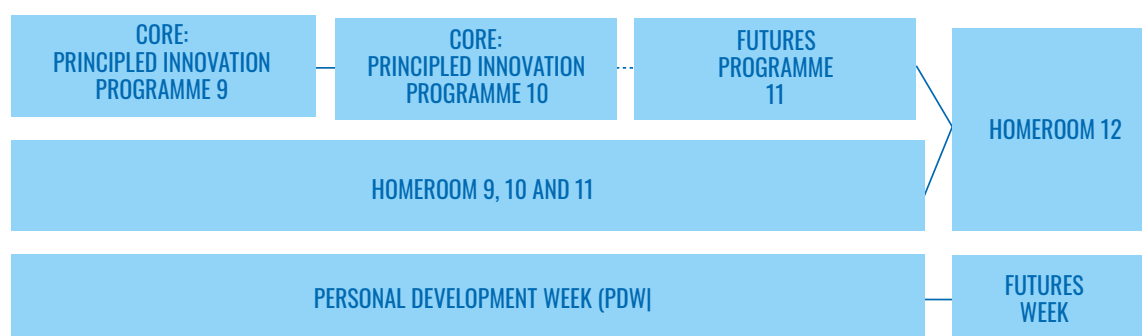
Students remain with the same homeroom group throughout all four years of High School, helping to build strong connections and continuity. Students moving up from Middle School are placed in a homeroom after careful consultation with the Grade 8 team. New High School students are placed where there is the best contextual fit and balance within the group.

Will I stay with the same Core group?

Core 9 and 10 groups may change as students discover new service-related interests and projects. In Grade 9, students remain with their class group for most of the year. In Grade 10, there may be opportunities to change groups at the end of semester one based on evolving interests and goals.



PERSONAL DEVELOPMENT PROGRAMME COURSE PROGRESSION



Core: Principled Innovation Programme 9 Grade 9 • 1 year

ISZL

This course helps you understand and put into practice ISZL's mission, vision, and values. You will learn to listen with compassion and kindness, discuss ideas that may differ from your own, and use storytelling to explore both your experiences and those of others. You will explore questions such as:

- What does it mean to be principled?
- How can one person's actions impact a community?
- What does it mean to innovate, and what skills does that require?
- How might principled innovation look at a school, local, or global level?

Throughout the course, you will apply your learning through independent and collaborative design challenges. These experiences will help you build the skills needed for the Grade 10 Personal Project and explore innovative solutions within a service context.

Core: Principled Innovation Programme 10 Grade 10 • 1 year

ISZL

This course builds on the Grade 9 programme, providing opportunities to deepen your understanding of personal identity, values, and motivations. You will explore how to create positive change at both a personal and community level, demonstrate the values of the IB Learner Profile, and strengthen key ATL skills needed to lead and manage change. Throughout the course, you will identify, lead, and participate in a range of student-driven school and community projects. You will also take part in enrichment activities inspired by the IB Diploma Programme's Creativity, Activity, Service (CAS) strands, while progressing through the key stages of the MYP Personal Project and developing the skills required for independent study.

Futures Programme Grade 11 • 1 year

ISZL

In Grade 11, you will continue to develop self-awareness and empathy, making choices that create a positive impact on yourself and others. Every two weeks, you will meet with your University Advisor in a small-group setting to develop the skills and understandings that will help you prepare for your transition into senior year and life after ISZL.

Homeroom 9, 10, 11 and 12 **Grades 9, 10, 11 and 12 • 4 years**

ISZL

Homeroom is a place where we want you to feel understood, connected, and cared for, with space to pause, reflect and engage with your peers. You will meet with your homeroom mentor and a small group of classmates for thirty minutes at least four days a week. During this time, you might take part in group games, one-to-one mentoring, grade-level assemblies, or circles to discuss relevant social, personal, and health-related topics. You will stay with the same group of students and, whenever possible, the same homeroom mentor, throughout all four years of High School, building strong and lasting relationships.

Personal Development Week 9 **Grade 9 • 1 week • Compulsory**

ISZL

In Grade 9, your PDW will be an experiential learning opportunity within Europe, designed to offer the right level of challenge and personal growth. You will take part in a range of activities across outdoor pursuits, sports, the arts, and service learning, all connected to the concepts of CAS. Alongside daily collaborative experiences, you will help design and take part in whole-grade team-building events, strengthening relationships with classmates and staff while developing confidence and connection within the ISZL community.

Personal Development Week 10, 11 **Grades 10 and 11 • 1 week • Compulsory**

ISZL

In Grades 10 and 11, you will have the opportunity to immerse yourself in a different culture and take part in service projects that offer meaningful challenge and growth. Before travelling, you will work with fellow students and community partners at your destination to identify needs, plan responses, and prepare strategies for action. During your PDW, you will put these plans into practice, collaborating directly with the local community. Afterwards, you will reflect on your learning and consider how your work can remain sustainable. Depending on your chosen project, your PDW may take you to exciting destinations like Ghana, Spain, Nepal, Iceland, and Portugal.

Futures Week **Grade 12 • Compulsory**

ISZL

Futures Week gives you time to connect with classmates, create lasting memories, and prepare for life after graduation. We recognise how challenging it can be to balance academic demands, personal commitments, and university applications, so this week offers a chance to pause, reflect, and recharge. You will take part in tailored workshops on topics such as university applications, study and life skills, resilience, and executive functioning strategies. The week also includes time at our chalet in Wengen, where you will enjoy shared experiences in a beautiful alpine setting. Together, these experiences are designed to help you feel confident and well-prepared for your post-secondary journey, while celebrating this milestone with your graduating class.

ARTS

The Arts at ISZL invite students to discover their creativity and express themselves through visual arts, media, theatre, and music. In our programme, students don't just learn techniques — they learn to think like artists. They explore new ideas, take creative risks, and reflect on their growth along the way. Working both individually and with others, students gain skills in problem-solving, critical thinking, and communication. They learn how the arts connect people across cultures, histories, and experiences, and they come to understand how creativity can shape identity and bring communities together. Most importantly, the Arts help students find their own voice. They leave our programme with the confidence to share their ideas, the curiosity to keep exploring, and the empathy to see the world through different perspectives.

FREQUENTLY ASKED QUESTIONS

Will I build a portfolio throughout the IB or AP® Visual Art course?

Yes. The material created throughout both courses can contribute towards a portfolio for university applications.

Is there an examination in the arts?

No. There is no written, visual, or practical exam for IB Visual Art, AP® Art & Design, or IB Music. Assessment is based on coursework and portfolios.

What is the difference between IB Visual Art and AP® Art & Design?

- IB Visual Art is a two-year course that explores a wide range of media and techniques. You will create and curate a resolved body of work while learning to write academically about your own and others' art.
- AP® Art & Design is a one-year course focused on developing practical skills in 2D, 3D, or Drawing, culminating in a portfolio of resolved artworks.

Do I need instrumental or vocal lessons for IB Music?

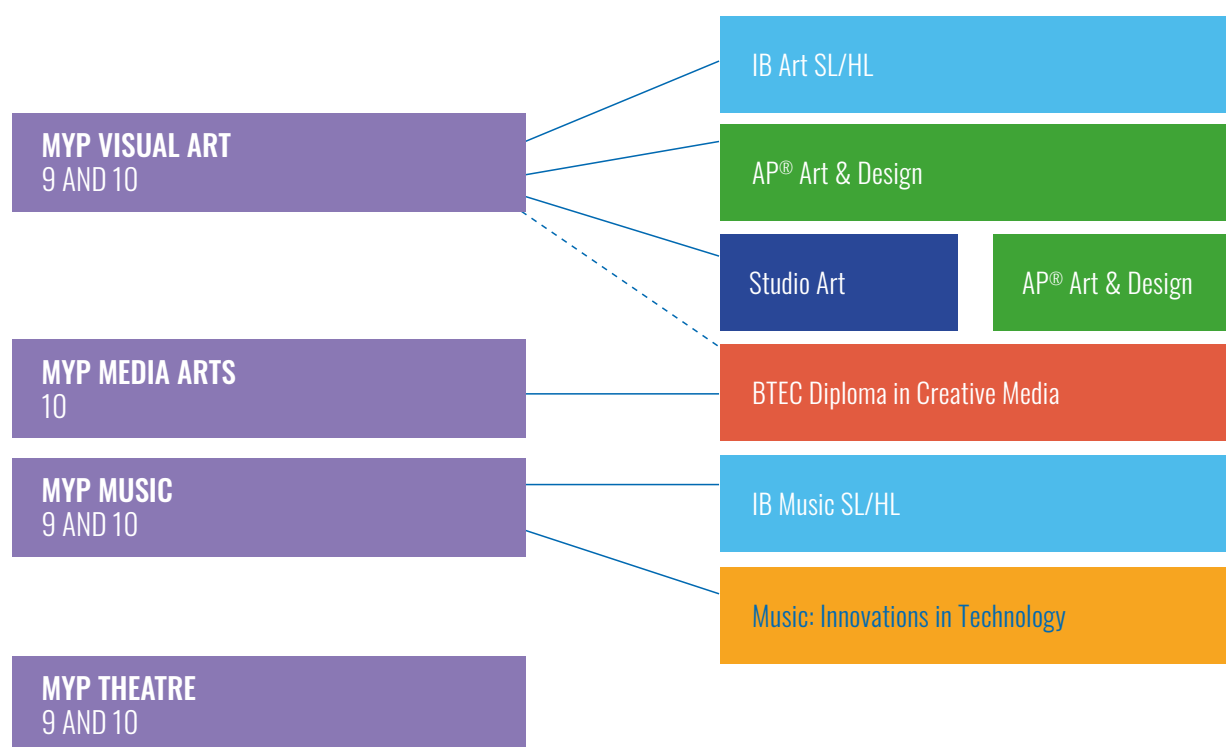
Not necessarily, but each component includes a performance element. Having some instrumental or vocal experience, or taking lessons during the course, will help you develop confidence and skill. There is also an option to perform using music technology.

Is it possible to take an AP® or IB arts course if I didn't follow that subject in the MYP?

Ideally, you will continue the arts subject studied in the MYP. However, it may be possible to begin a new discipline with teacher approval. You will need to show interest, commitment, and evidence of ability, for example, through a summer course or portfolio work that supports your transition.

ARTS COURSE PROGRESSION

Movement between different arts disciplines after the MYP may be possible; please consult your arts teacher for guidance and approval. The BTEC Diploma in Creative Media also counts toward the English and Humanities graduation requirements.



MYP Theatre 9 Grade 9 • 1 year

MYP

During Grade 9, you will embark on a year-long journey exploring diverse theatrical traditions and performance techniques. The year begins with the class collaboratively creating their own adaptation of Brainstorm before delving into Stanislavski's methodologies through practical duologue work. You then broaden your theatrical horizons by studying Asian performance traditions including Noh, Kathakali, and Wayang Kulit, before concluding the year with a creative unit on voice acting for animation.

MYP Music 9 Grade 9 • 1 year

MYP

You will develop your knowledge and skills through engagement in various composing, listening and performance-based activities. You will learn how to change and manipulate musical elements when arranging an existing song of your choice. The songwriting unit allows you to acquire skills in melody writing, word-setting and using musical layers, textures and structures. You will explore how traditional music is composed and performed in India and you will utilise software packages such as GarageBand and Sibelius to create your own music. You will enjoy the opportunity to develop your creativity, imagination and expressive skills whilst at the same time acquiring knowledge and understanding of music literacy, genres and cultures.

MYP Visual Art 9 **Grade 9 • 1 year**

MYP

This course focuses on developing you into individual artists by exploring a range of genres, media and concepts. You will embrace more conceptual and contextual approaches to creating artwork through the exploration of art practices from a variety of cultural, historical and contemporary art traditions. You will be guided through units on drawing, clay construction, digital drawing, landscape painting, photography and printmaking. Your learning will culminate in an end of year exhibition. The inquiry-based curriculum will allow you to explore your strengths as a creative, develop resilience, and start to develop meaningful and technically proficient artworks.

MYP Theatre 10 **Grade 10 • 1 year**

MYP

This course focuses on developing a range of vocal and physical skills through different styles of theatre. You will undertake a number of group projects which lead you through the techniques of devising and collaboration. You will have the opportunity to work with scripts, as well as creating your own scenes as you explore physical theatre, acting for film, and stage combat. Experimentation and exploration will be instrumental in helping you to produce exciting and original performances. You must be open to new ideas, excited about taking risks, and eager to push the boundaries of conventional theatre.

MYP Music 10 **Grade 10 • 1 year**

MYP

You will continue to acquire knowledge and skills through engagement in various composing, listening and performance-based activities. During the year, you will explore how musical ideas and motifs can be developed, learn about impressionism, and acquire a larger range of techniques to use in creating your own music. The final unit explores the world of composing for film, and you will learn how to compose your own movie soundtrack. As in Grade 9, you will enjoy the opportunity to develop your creativity, imagination and expressive skills whilst at the same time acquiring knowledge and understanding of music theory, styles and cultures.

MYP Visual Art 10 **Grade 10 • 1 year**

MYP

This course builds on the skills and creative expression you explored in Grade 9. The inquiry-led curriculum allows for more personal choice when producing artworks, in choosing artists for inspiration and research, and choice of materials to explore. The course is still underpinned by a conceptual and contextual approach, enabling you to develop innovative and risk-taking outcomes. Through an exploration of Artist Appropriation, the Human Figure, and Brut Art, you will continue to develop your own voice as an artist. The course will culminate in a theme-driven exhibition, where you will produce a piece of artwork that will demonstrate what you have learnt throughout your MYP Visual Art journey.

MYP Media Arts 10 **Grade 10 • 1 year**

MYP

This course focuses on developing media skills through an artistic lens, helping you grow as an individual media artist by exploring a range of genres, concepts and outcomes. You will have the opportunity to explore different media techniques from graphic design, photography, film, and documentary making to podcast production. You will embrace more conceptual and contextual approaches to creating media through the exploration of practices from a variety of cultural, historical and contemporary traditions, using these to develop your own practice. The inquiry-based curriculum will allow you to explore your strengths as a creative, develop resilience, and start to develop meaningful and technically proficient outcomes.

IB Music SL/HL Grades 11 and 12 • 2 years



In this course you will learn through researching, creating and performing music from a wide variety of contexts, styles, cultures and historical periods. The course will cover music that is composed for social, cultural and political expression, music that is composed purely for listening and performing, music that is composed for dance, entertainment and dramatic impact, and music that is composed or performed using music technology. Through active music-making, you will gain skills in analysis, communication, composition, performance, reflection, and critical and creative thinking. All students (HL and SL) will engage with three course components: Exploring music in context; Experimenting with music; and Presenting music. HL students will also engage with a collaborative project involving contemporary music-making. Through these components, you will be able to personalise your learning by studying music you are interested in.

You are externally assessed by the IB through coursework (100%).

IB Visual Arts SL/HL Grades 11 and 12 • 2 years



This course is designed for passionate artists who are committed to a serious study of exploring and experimenting with media, ideas and artists' influence. You will have the opportunity to prepare a portfolio for university entrance and the IB Diploma. You will build and develop your technical abilities in a wide range of two-dimensional and three-dimensional media to create a body of five resolved artworks. You will also submit a portfolio of experimentation and exploration of your ideas, as well as a personal project focused on the context of one of your chosen artworks.

You are externally assessed by the IB through the production of coursework (100%).

Music: Innovations in Technology Grades 11 and/or 12 • 1 and/or 2 years



You will have the opportunity to practise as a performing artist and composer, working with industry-standard recording technology. Completing two term-based projects as part of a career-ready portfolio, you will consider artistic and technical aspects of music, as well as the effect of music and sound on an audience. The course follows the real-life process of modern music composition, production, performance, advertising, and distribution, which allows students to not only put together original tracks, but to create a brand of themselves and others, and brings in aspects of the ever-changing world of contemporary online music marketing. This is not the normal school course that happens between 08:45 and 16:00. In one moment, you might be learning about music composition theory, in another, arranging an after-school recording session before conducting a musical performance in front of a live audience. This practical music programme provides you with a taste for some of the authentic experiences of the world of music.

Studio Art Grade 11 or 12 • AP Prep • 1 year



You will learn to explore the elements and principles of Art and Design through their direct application in your own two or three dimensional creations. You will examine both why and how artists and designers use visual devices for a wide range of fine art, graphic design, illustrative or sculptural functions. Through structured projects, you will be guided to develop your Sustained Investigation portfolios for potential submission for examination in the following year or portfolios for later university applications. The Art Factory will be a place for you to enjoy creative freedom in an inspiring and friendly environment.

AP® Art & Design (Drawing or 2-D Design or 3-D Design) Grades 11 or 12 • 1 year

AP

In AP® Art & Design, you will continue to explore the elements and principles of design through direct application in your own creative work. The programme offers three distinct courses and portfolio exams, allowing you to develop and showcase your individual artistic voice. The course offers significant creative freedom within a supportive and innovative environment, helping you refine both your technical skills and conceptual thinking. Your goal is to produce a college-level portfolio for external evaluation by the College Board. Each portfolio includes two sections:

- Sustained Investigation: You will conduct an inquiry-based exploration through practice, experimentation, and revision, developing a body of interconnected work.
- Selected Works: You will present pieces that demonstrate a skillful synthesis of materials, processes, and ideas. For both sections, you will also submit short written reflections explaining your process and artistic intent.

You are externally assessed (100%) by the College Board based on your submitted portfolio.

BTEC Diploma in Creative Media Grades 11 and 12 • 2 years • Meets Humanities & English graduation requirements

BTEC

This is a highly specialised, career-related qualification in Creative Media, blending academic knowledge and understanding of the media sector with the technical expertise needed to produce industry standard media and the broader skills to thrive in the workplace. You will complete a range of authentic projects working to a brief from real clients and producing a broad variety of media such as film, audio, web-based, and graphic design. You will explore ways of researching ideas, understand and develop solutions to creative challenges, acquire technical skills and develop professional practice and communication skills, preparing you for jobs in the media industries and for university courses in media, communication and the creative arts. There are three versions of this course.

BTEC Diploma in Creative Media

BTEC

You will complete four modules: Creative Media Skill Development, Responding to a Brief, Personal Progression and Creative Industry Response. You will complete media projects in each unit whilst developing a portfolio to showcase your work and qualify with the Pearson BTEC International level 3 Diploma in Creative Media.

BTEC Subsidiary Diploma in Creative Media

You will complete two modules: Creative Media Skill Development and Responding to a Brief. You will complete media projects in each unit whilst developing a portfolio to showcase your work and qualify with the Pearson BTEC International level 3 Diploma in Creative Media.

Creative Media (Grade 12 only)

You will complete media projects alongside and in collaboration with the BTEC Diploma students, developing skills and a portfolio of productions, but you will not be issued with a BTEC Diploma certificate.



DESIGN

The Design programme at ISZL gives students the tools to turn ideas into solutions. Through design technologies and product design, students learn to identify real-world problems and respond with thoughtful, innovative ideas. At the heart of the programme is the design cycle — a simple but powerful process of asking questions, developing ideas, building prototypes, and testing solutions. Along the way, students learn to research, collaborate, and think critically about how their designs impact people and the environment. Whether experimenting with materials, shaping a product, or developing a system, students are encouraged to be imaginative, practical, and responsible. By the time they leave ISZL, they are confident problem-solvers who understand how thoughtful design can help shape a better future.

FREQUENTLY ASKED QUESTIONS

What is the BTEC Diploma in Creative Media equivalent to?

The BTEC Diploma in Creative Media is equivalent to two IB Higher Level (HL) subjects, according to UCAS tariff points.

Do universities accept BTECs?

Yes. Around 95% of UK universities accept BTECs, and about one in four UK applicants includes a BTEC qualification. Combined with the ISZL High School Diploma, BTECs are also widely recognised by universities in North America.

Is the BTEC Diploma in Creative Media easier than IB subjects?

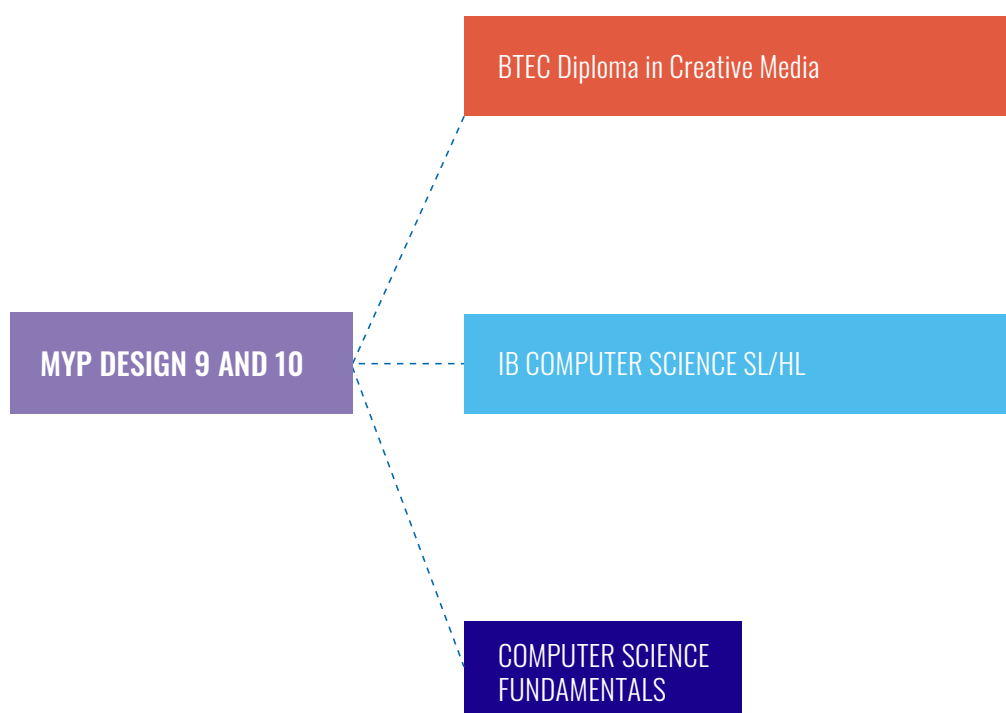
Not easier, just different. It is at the same qualification level as IB Diploma courses but is assessed continuously rather than through final exams. You will complete a new unit every four to five weeks, requiring analysis, evaluation, and consistent effort throughout the two years.

How much work experience is included in the BTEC Diploma in Creative Media?

Each unit includes a work experience component. You will visit business partners during the school year and complete longer placements during holidays. Students are encouraged to find their own internships to further develop industry experience.

DESIGN COURSE PROGRESSION

IB Computer Science and IB Computer Science Fundamentals counts towards your Science Graduation requirements. The BTEC diploma in Creative Media counts towards your English and Humanities graduation requirements.



MYP Design 9 **Grade 9 • 1 year**

MYP

In this course, you will develop both design thinking and practical skills, using a range of software tools for 3D modelling, image manipulation, and programming. Through research, ideation, and creative problem-solving, you will design and produce high-quality solutions to real-world challenges. You will explore how visual language influences design for specific audiences and apply the design cycle to plan and create your own educational game. Using the Python programming language, you will strengthen your logical thinking and apply testing and development cycles to produce working code. Collaborating with others, you will also explore branding, marketing and product design.

MYP Design 10 **Grade 10 • 1 year**

MYP

Building on MYP Design 9, you will explore more challenging and open-ended projects. You will build on the Python coding skills developed in Grade 9, working independently to produce creative and problem-solving solutions. Through the Cultural Crafting Project you will explore product design using the laser cutters, Cricut and 3D printing machines. At the end of the course you will develop a self-directed brief in which you will demonstrate your knowledge of the Design Cycle to produce a solution to a real-world problem.

IB Computer Science SL/HL **Grades 11 and 12 • 2 years**

IB

See course listing on page 80.

Computer Science Fundamentals **Grade 11 or 12 • 1 year**

ISZL

See course listing on page 81.



LANGUAGE AND LITERATURE

The ability to communicate lies at the heart of what it means to be human — it is both a privilege and a right. At ISZL, we aim to prepare students to be literate, thoughtful, and culturally informed global citizens. Our courses equip learners with the skills needed to communicate effectively in a digitally connected, information-rich world, while celebrating the power of storytelling and the written word. Through oral presentations, filmmaking, and a variety of creative or analytical writing, students learn to express ideas clearly and critically. In Grades 9 and 10, students explore a wide range of texts and media, developing the skills and cultural awareness needed for future study. In Grades 11 and 12, AP® and IB courses allow students to specialise further, examining how language and literature shape, and are shaped by, the world around us. Across all courses, students investigate diverse genres and perspectives, discovering how we use and create meaning through language, literature, and media.

FREQUENTLY ASKED QUESTIONS

Do I have to take an English course in both Grade 11 and 12?

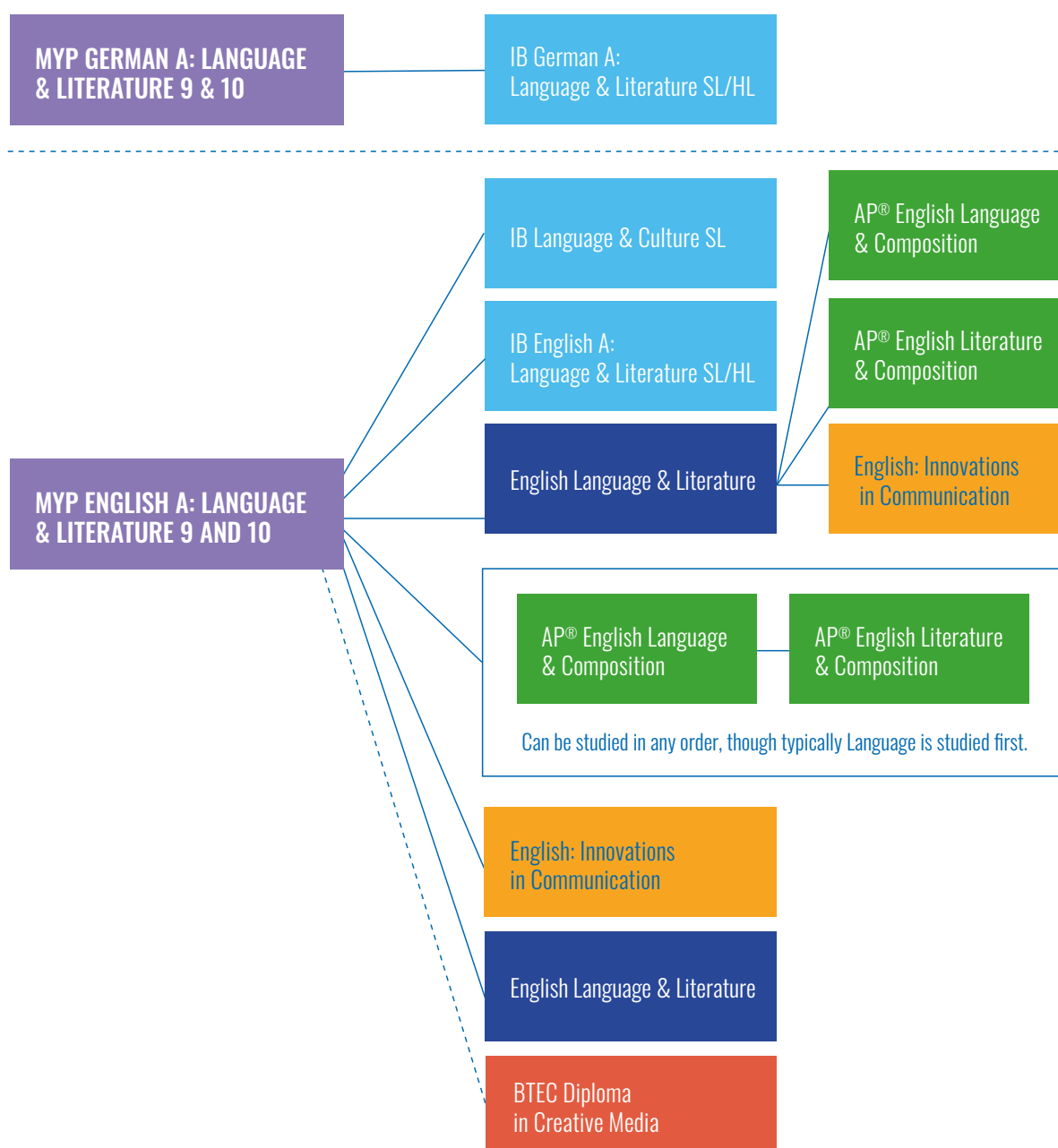
Not necessarily, but we strongly recommend four years of English. Only three years are required to meet ISZL graduation requirements, though many universities expect four. If you prefer a creative and production-focused path without final external exams, you may take the English: Innovations in Communication course over two years. Speak with your University Advisor if you have questions about university requirements.

Can I take AP® English Literature & Composition in Grade 11?

Yes. However, because greater maturity and wider reading experience often enhance success in this course, we usually recommend taking it in Grade 12.

LANGUAGE AND LITERATURE COURSE PROGRESSION

At least three years of English are required for graduation, though we strongly recommend completing four years. The BTEC Diploma in Creative Media and IB Language & Culture SL both count toward the English and Humanities graduation requirements.



MYP English A: Language & Literature 9 **Grade 9 • 1 year**

MYP

You will develop an appreciation for a variety of literary and non-literary texts, including poetry, prose, short stories, speeches, opinion editorials and more. There will be regular opportunities to engage in your own reading selections and to immerse yourself into creative writing tasks. In one unit you may be delivering a persuasive speech advocating for a cause you are passionate about, and in another, producing a personal memoir that explores your identity. Our exploration of literature will offer you the opportunity to understand how it provides a lens through which we see and interpret the world in which we live.

MYP German A: Language & Literature 9 **Grade 9 • 1 year**

MYP

In this course, you will learn about how language and images are used in various contexts. In one part of the course, you will engage with authentic real-world issues and their representation in media, learning about various text types and analysing how language is used to convey meaning. In the other part, you will engage with literature, analyse the impact of the author's choices and of when and where it was written. You will be a creator of various texts from newspaper articles to poetry. You will analyse the television news and create your own, debate about important issues, and slam poetry in our annual German poetry slam.

MYP English A: Language & Literature 10 **Grade 10 • 1 year**

MYP

English A: Language & Literature 10 offers the opportunity to explore life through the lens of literature and investigate the power of language. This course challenges you to question the impact that context can have on the production and reception of both fiction and nonfiction texts. It will ask you to evaluate the key elements of persuasive writing as we work on becoming stronger debaters through our study of rhetoric and logical fallacies. Our studies of plays by Shakespeare and exploration of global issues in literature circles will also give you the chance to analyse the complexity behind some of literature's most powerful characters and enduring themes.

MYP German A: Language & Literature 10 **Grade 10 • 1 year**

MYP

In this course, you will build on the skills and concepts learned in MYP German A: Language & Literature 9, deepening your understanding of how language and imagery shape meaning in different contexts. You will study literature within its cultural and historical setting and explore its relevance to the modern world. To demonstrate your learning, you will bring a play to life on stage, applying your analytical and creative skills collaboratively. You will also examine how literature raises awareness of contemporary issues, and become a creator of diverse text types, including journalistic articles and essays. Throughout the course, you will further develop your speaking skills through a range of formal and informal oral activities.

IB English A: Language & Literature SL/HL Grades 11 and 12 • 2 years

IB

You will learn to explore the language and images found in the world around you. You will examine both why and how authors and creators produce, for example, novels, editorials, advertisements or poetry, and consider questions about why one person might read something differently to another. You will also be a creator, producing thoughtful analytical commentaries, comparative essays, imaginative texts, academic presentations and more. In one moment, you might be analysing the nature of taboo and exploring manipulative advertising techniques, in another, discussing Margaret Atwood's *The Handmaid's Tale* and its warnings to guard against complacency.

You are externally assessed by the IB through coursework (40% at HL and 30% at SL) and final examinations (60% at HL and 70% at SL).

IB Language & Culture SL Grades 11 and 12 • 2 years

IB

Have you ever wondered how language and experience shape your identity? Have you thought about how the languages we use, and the cultures we encounter, influence the way we understand and interact with the world? If you are curious about fields like linguistics or anthropology, but not especially interested in studying a foreign language, then Language & Culture may be the ideal course for you. This course is open to everyone. You do not need to be a strong language learner or multilingual. What matters is your interest in exploring how languages and cultures compare, and in examining issues such as race, ethnicity, class, power, belonging, community, gender, and language endangerment. Classes are active and engaging, involving discussion, inquiry, projects, and research as you investigate how language and culture shape human experience.

You are externally assessed by the IB through coursework (30%) and final examinations (70%).

IB German A: Language & Literature SL/HL Grades 11 and 12 • 2 years

IB

In this course, you will explore how language and images shape the world around us. You will investigate real-world issues, examining how context influences language, and how language influences different audiences. Through the study of German literature and literature in translation, you will analyse how writers use language to create meaning and provoke response. You will also be a creator, producing a wide range of texts: analytical commentaries, essays, imaginative pieces, academic presentations, creative pitches, and more. One moment you may be analysing the language of Swiss referendum posters; the next, discussing the relevance of Kleist's *The Broken Jug* in the context of contemporary debates around misinformation and political discourse.

You are externally assessed by the IB through coursework (40% at HL and 30% at SL) and final examinations (60% at HL and 70% at SL).

English Language & Literature Grades 11 or 12 • AP Prep • 1 or 2 years

AP

In this course, you will explore a wide range of fiction and non-fiction texts from different cultures, time periods, and perspectives. Through this study, you will develop an understanding of how both rhetoric and literature contain implicit and explicit assumptions about how we know and interpret the world, and ourselves. You will gain insight into the attitudes, values, and viewpoints of diverse authors and contexts. Assessment includes a variety of formats, such as analytical and expository essays, multiple-choice comprehension tasks, and oral components like debates and class presentations. This course is designed to prepare you for either of the AP® English pathways: AP® English Language & Composition or AP® English Literature & Composition.

English: Innovation in Communication Grades 11 and/or 12 • 1 or 2 years

INNO

After developing essential skills in writing, reading, and media production, you will work on individual and group projects that encourage innovation across a wide range of media. You might film a documentary, serialise a book on a blog, write for Medium, submit articles to newspapers, enter a literary competition, lead an awareness campaign, organise a school-wide writing contest, or craft and deliver an inspiring business pitch. Anything is possible as long as it brings voice to an idea, project, or vision that has the potential to make the world a kinder, better place. By the end of the course, you will have built a portfolio of innovative work that showcases your strengths as a communicator and deepens your understanding of the power of written, visual, and spoken language.

AP® English Language & Composition Grades 11 or 12 • 1 year

AP

In this course, you will learn how language can be used purposefully and effectively in non-fiction writing. You will develop your ability to construct clear, well-supported arguments by practising close reading, analysing information from source texts, and applying a range of rhetorical strategies. You will explore a variety of genres, including literary memoirs, creative non-fiction, satirical essays, and current events, and use these texts to strengthen your critical thinking and writing skills. Learning activities may include blogging about global issues, participating in debates, and completing practice exam tasks. By the end of the course, you will have developed greater confidence in your written voice and a strong foundation in the skills needed for academic and real-world communication.

You are externally assessed by the College Board through one final examination (100%).

AP® English Literature & Composition Grade 11 or 12 • 1 year

AP

AP® English Literature & Composition invites you to study a wide range of imaginative and influential literature through close reading and critical analysis. You will engage with classic texts, poetry, and works by world-renowned authors, exploring both the explicit themes and the deeper ideas that shape each piece of writing. Written composition is an essential part of the course. You will strengthen your ability to write expository, analytical, and argumentative essays, developing transferable skills that support future academic study. Assessment tasks include practice components of the College Board exam, such as timed essays and multiple-choice comprehension questions, as well as opportunities to demonstrate your understanding through reflective and creative formats such as journal writing.

You are externally assessed by the College Board through one final examination (100%).

BTEC Diploma in Creative Media Grade 11 and 12 • 2 years

BTEC

See course listing on page 38.



FIRST LANGUAGE PROGRAMME

ISZL is committed to helping students stay connected to the cultures and languages that shape their identity. One of the ways we do this is through our First Language Programme (FLP), which allows students to develop their language skills within their regular timetable. The programme is designed for students who wish to strengthen their proficiency in their home, personal, or best language, with the goal of achieving academic fluency. We believe that nurturing students' first languages promotes intercultural understanding, supports cognitive and social development, and provides academic recognition that can benefit students in further education and future careers.

FREQUENTLY ASKED QUESTIONS

How is a “First Language” defined?

At ISZL, the term first language refers to any home, best, or personal language that a student is committed to developing towards academic proficiency. This is typically a language spoken at home by one or more parents or has been used regularly outside school (for example, through prior schooling in another language). The First Language Programme supports development most effectively when students also use the language thoughtfully and intentionally beyond the classroom.

Can I study my first language in Grades 9–12?

Yes. In Grades 9 and 10, ISZL offers tutors and external programmes for many of the languages spoken within our community. In Grades 11 and 12, students at the required level may take IB First Language A: Literature School Supported Self-Taught (SL) in a range of languages, provided a suitable tutor can be found.

How is my learning structured?

In Grades 9 and 10, the First Language Programme prepares students for the School Supported Self-Taught (SSST) model in Grades 11–12 or for an external language certification. Three options are available: Language Acquisition, Language & Literature, and External Online Provider courses. Some courses are taught in person and others online, with all students monitored by a First Language Supervisor. This supervisor ensures alignment with ISZL's framework and provides support throughout the year. In Grades 11 and 12, students in the IB First Language A: Literature SSST (SL) course are supported by a language tutor and meet weekly with the School-Supported Self-Taught Supervisor. ISZL maintains a network of local and online tutors, and most students continue working with the same tutor throughout their studies.

Is there an extra cost for this course?

In Grades 9 and 10, first language tuition fees are charged directly to fee payers. In Grades 11 and 12, ISZL provides a subsidy toward the cost of the IB First Language A: Literature SSST (SL) course. For detailed cost information, please contact the First Language Programme Supervisor.

Can I take two Language A courses for the MYP or IB Diploma?

Yes. Students who complete two Language A courses as part of the IB Diploma Programme and achieve a grade of 3 or higher in both will be awarded the IB Bilingual Diploma. The Language and Culture course does not count toward this qualification.

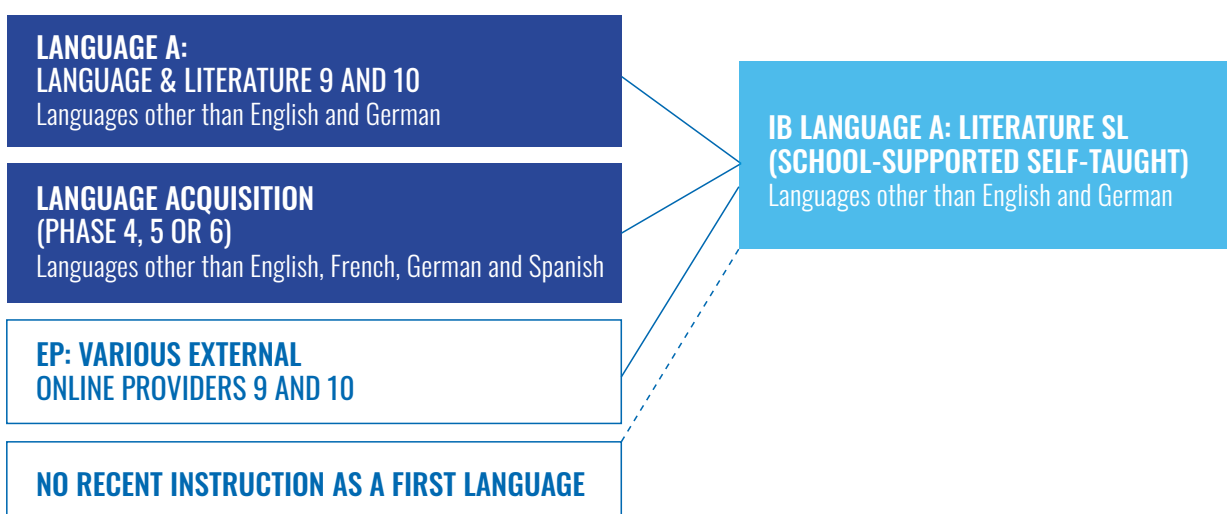
Can I still join the programme?

Possibly. The IB recommends studying your first language during the MYP to reach the advanced level required for the IB Diploma. If you are unsure of your readiness, please speak with the First Language Programme Supervisor, who can help assess your level and recommend next steps.

If I take a First Language course in Grades 9 or 10, can I also study French, Spanish, or English as an Additional Language?

First language courses usually replace the Spanish or French language option. If you are concerned about maintaining your first language while enrolled in EAL, please speak with the First Language Programme Supervisor and the Assistant Principal for Grades 9 and 10 to discuss options and support.

FIRST LANGUAGE PROGRAMME COURSE PROGRESSION



EP: Various External Online Providers 9 and 10
Grades 9 and/or 10 • 1 or 2 years • Additional costs apply

**EXTERNAL
PROVIDER**

ISZL partners with a range of external online national curriculum providers to offer additional language learning pathways. These courses vary in structure depending on the provider, but all include a blend of independent study and guided learning. Throughout the course, you will be supported and monitored by a First Language Programme Supervisor. Grades are reported using the assessment scales of the external organisations. ISZL does not translate or convert these grades into MYP or ISZL grade scales; instead, they are recorded as 'complete' or 'incomplete' on school transcripts.

Language Acquisition CEFR External Provider
Grades 9 and/or 10 • 1 or 2 years • Additional costs apply

**EXTERNAL
PROVIDER**

This course is designed to help you continue developing your home, personal or best language, strengthening your ability to communicate effectively. You will engage in a range of meaningful learning experiences and build your proficiency across all four skills: reading, writing, listening and speaking. Lessons focus on extending your use of grammatical structures and vocabulary in ways that support both accuracy and expression. Teaching may be in-person, online or a blended model, and teaching is often 1:1, giving you ongoing opportunities to personalise your learning and reflect on your progress. By the end of the course, students who wish to continue studying this language in Grade 11 will need to have reached a level of proficiency suitable for IB Language A: Literature SL (School-Supported Self-Taught).

Language & Literature 9 and 10 External Provider
Grades 9 and/or 10 • 1 or 2 years • Additional costs apply

**EXTERNAL
PROVIDER**

In this course, you will study your first language (personal, best or home language) at a level and pace that matches your needs. You will work with a language tutor either in person or online, and your progress will be monitored by a First Language Programme Supervisor. You will develop your language, communication and critical thinking skills in a range of contexts and engage with both literary and non-literary texts. The course blends elements of the IB with national curricula so that you can continue studying in this language, return to schooling in that language system, and/or prepare for external language examinations. By the end of the course, most students continue into Grade 11 and follow the IB Language A: Literature SL School-Supported Self-Taught pathway. Please note that to do so, you must have maintained a suitably proficient level in your first language.

IB Language A: Literature SL School-Supported Self-Taught (Language Other Than German and English*) Grades 11 and 12 • 2 years • Additional costs apply

The IB logo is a blue circle with the letters "IB" in white.

The IB Language A: Literature (School-Supported Self-Taught) course is suitable only for students who are already fluent in speaking, reading, and writing in their chosen language. The IB offers this Language A: Literature course in many languages, allowing you to study and analyse literature in your first language (home, personal, or best language). You will read and examine a range of literary texts and learn to interpret them within their literary, historical, and cultural contexts. Texts are chosen in collaboration with your language tutor so that the course can be tailored to your needs, interests, and linguistic background. You will work closely with a language tutor and be supported by School-Supported Self-Taught Supervision. Weekly advisory meetings with your supervisor are required, and you will need to self-manage additional independent study time to meet the IB's minimum expectations. Students who take two Language A courses are eligible for the IB Bilingual Diploma.

You are externally assessed by the IB through coursework (30%) and final examinations (70%).

**IB Languages Available: Afrikaans, Albanian, Amharic, Arabic, Armenian, Azerbaijani, Bengali, Bosnian, Bulgarian, Catalan, Chinese, Croatian, Czech, Danish, Dutch, English, Estonian, Filipino, Finnish, French, Georgian, German, Hebrew, Hindi, Hungarian, Icelandic, Indonesian, Italian, Japanese, Khmer, Kiswahili, Korean, Latvian, Lithuanian, Macedonian, Malay, Modern Greek, Mongolian, Nepali, Norwegian, Persian, Polish, Portuguese, Romanian, Russian, Serbian, Sesotho, Siswati, Slovak, Slovene, Spanish, Swedish, Thai, Turkish, Ukrainian, Urdu, Vietnamese.*

LANGUAGE ACQUISITION

We believe that everyone is a language learner, and that the world is a better place when we understand and appreciate its many cultures. Through authentic, high-level language learning experiences, students and teachers explore engaging topics that connect them with the world around them. In the early stages, language study focuses on developing key skills and understanding the structure of language. As students progress, they use these skills to communicate confidently, think critically, and discuss complex global issues. Language learning is not an end in itself — it is a lifelong journey that builds intercultural understanding, self-awareness, and the ability to collaborate across cultures. Being competent in another language opens doors to new opportunities, strengthens career mobility, and builds empathy in an interconnected world.

FREQUENTLY ASKED QUESTIONS

What languages can I study if I only speak English?

We currently offer German and Spanish at beginner level in the MYP, and German at beginner level in the IB Diploma Programme. This ensures every student has the chance to learn a new language from the start, especially German, the language of our host country.

I am an EAL student and would like to study French or Spanish. Is that possible?

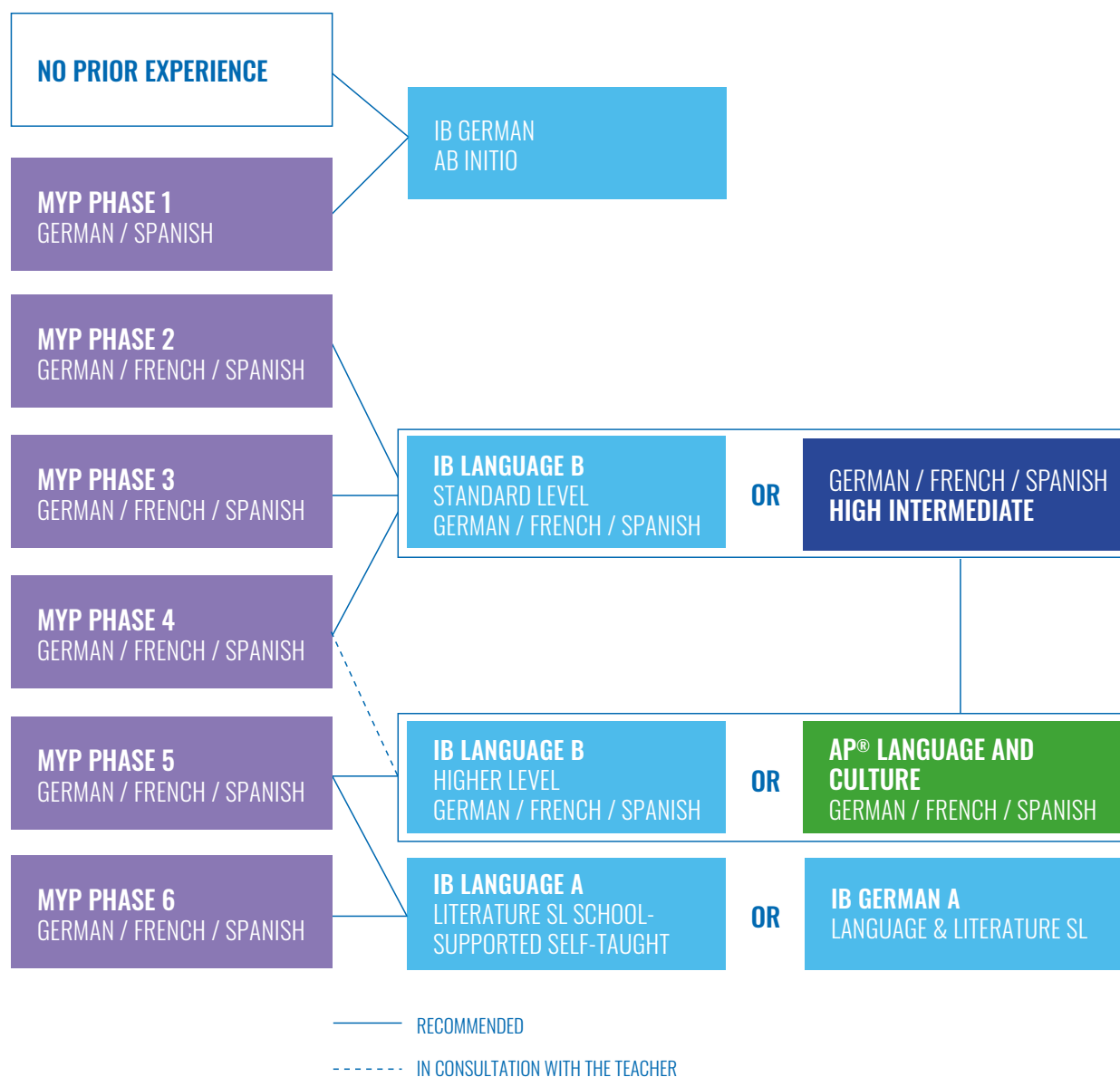
As German is the local language, all students at ISZL are encouraged to study German. Therefore, most EAL students in Grades 9 and 10 cannot take French or Spanish at the same time. However, in Grade 11, students are free to change their language options and may choose French or Spanish then.

Can I take a Language B (HL) course if it is my home language?

Usually, no. Your course choice should match your level of language proficiency. A student who uses the language regularly at home and demonstrates a high Phase 5 or 6 proficiency would normally be expected to take Language & Literature or Literature School Supported Self-Taught (SSST) instead of Language B HL. For borderline cases, the Language Acquisition Subject Lead and IBDP Coordinator will review your language background and recommend the most appropriate placement.

LANGUAGE ACQUISITION COURSE PROGRESSION

Movement between phases may not follow a yearly pattern.



*Students at Phase 6 Proficiency are not permitted to enrol in a taught AP® Language course at ISZL

LANGUAGE ACQUISITION

GERMAN • FRENCH • SPANISH

Language Acquisition: German • Spanish Phase 1 Grade 9 and 10 • 1 year

MYP

This course is designed for students in Grades 9 and 10 with little or no prior knowledge of Spanish or German. It will help you to develop your linguistic competence and your cultural knowledge of your chosen language. You will study topics such as: how to talk about yourself and your family, the home, food and gastronomy and customs and traditions. You will also learn basic grammatical structures so that you are able to create your own language and express your ideas and opinions on the topics covered. These topics will be presented and practised through a variety of engaging activities including role-plays, presentations, text analysis and creative written and spoken pieces. Often taught in smaller groups, the lessons are focused on individual progress and, therefore, there are many opportunities for reflection and personalised learning, including using technology to help enhance your learning.

Language Acquisition: German • French • Spanish Phase 2 Grade 9 and/or 10

MYP

In this course, you will increase your proficiency in four skills: reading, writing, listening and speaking. You will also review and expand your awareness of grammatical structures using a wide variety of topics. These topics will be presented and practised through a variety of activities including role-plays and presentations. The lessons are focused on individual progress and there are many opportunities for you to reflect and personalise your own learning.

In Grade 9, in French, you will revisit the use of articles and noun-adjectival agreements and you will be introduced to irregular verbs in the present tense. You will study these structures through topic-based units including home and family life and Francophone gastronomy. In Grade 10, in French, topics include the arts, media and image and the Francophone world. Grammar is reviewed and taught in context.

In Grade 9, in Spanish, you will revisit the use of articles and noun-adjectival agreements and be introduced to the present tense irregular verbs. You will study these structures through the medium of topic-based units including home, travel and school systems. In Grade 10, you will revisit the present tense and be introduced to the preterite tense. You will study these structures through the medium of topic-based units such as family life, health or customs and traditions.

In German, Grades 9 and 10 are taught together. Phases 2–4 are taught the same topics at different levels, and these include: 'Heimat,' the environment, and a unit on reading. The present, future and past tenses will be visited, as well as modal verbs.

Language Acquisition: German • French • Spanish Phase 3 Grade 9 and/or 10

MYP

This course is designed to help you continue developing your language skills and to deepen and enhance your capacity to communicate effectively. Throughout this course you will increase your proficiency in the four skills: reading, writing, listening and speaking. You will also review and expand your awareness of the grammatical structures. Topics will be presented and practised through a variety of activities including presentations, discussions, group activities and reading assignments. The lessons are focused on individual progress and there are many opportunities for you to reflect and personalise your own learning. Authentic materials, including film, podcasts and print media, are used to enhance your learning and make your linguistic experience more meaningful.

In Grade 9, in French, topics include the environment, careers and future plans, and grammar is reviewed and taught in context. In Grade 10, topics include the arts, media and image and the Francophone world.

In Grade 9, in Spanish, you will revisit the present tense and be introduced to the preterite tense. You will study these structures through the medium of topic-based units including customs and traditions, and technology. In Grade 10, you will revisit the preterite tense and be introduced to the imperfect tense. You will study these structures through the medium of topic-based units, including social relations and young people and wellbeing.

In German, Grades 9 and 10 are taught together. Phases 2–4 are taught the same topics at different levels, and these include: 'Heimat', the environment and a unit on reading. Tenses as well as sentence structure will be re-visited through these topics.

Language Acquisition: German • French • Spanish Phase 4 Grade 9 and/or Grade 10

MYP

This course is designed to help you to continue to develop your language skills and to deepen and enhance your capacity to communicate effectively. You will increase your proficiency in four skills: reading, writing, listening and speaking. You will also review and expand your awareness of the grammatical structures. This is done through the study of various unit topics in which grammar themes are seamlessly integrated to maximise your engagement. Topics will be presented and practised through a variety of activities including role-plays, group discussions and debates. The lessons are focused on individual progress and there are many opportunities for you to reflect and personalise your own learning. Authentic materials, including film, podcasts and print media, are used to enhance your learning and make your linguistic experience more meaningful.

In Grade 9, in French, topics include gastronomy, careers, and future plans and grammar is reviewed and taught in context. In Grade 10, topics include the arts and the Francophone world.

In Grade 9, in Spanish, you will revisit the preterite tense and be introduced to the present perfect tense. You will study these structures through the medium of topic-based units including stereotypes and career choices.

In Grade 10, you will revisit the imperfect tense and be introduced to the conditional tense. The units you study these topics through, will be the Spanish civil war and the arts.

In German, Grades 9 and 10 are taught together. Phases 2–4 are taught the same topics at different levels, and these include 'Heimat', the environment and a unit on reading. Tenses will be re-visited, and the use of conjunctions will be expanded.

Language Acquisition: German • French • Spanish Phase 5

Grade 9 and/or Grade 10

MYP

In this course, you will increase your proficiency in four skills: reading, writing, listening and speaking. You will also review and expand your understanding of grammatical structures and your awareness of stylistic choices, voice, and audience. Topics will be presented and practised through a variety of activities which include presentations, group discussions, and debates. As this is a high level, you are required to have a good command of the language. This course is taken with a view to preparing students for Language B Higher Level.

In Grade 9, in French, you will be introduced to the subjunctive and the passé simple. You will study these structures through the medium of topic-based units, such as art history and the evolution of French as a language. In Grade 10, you will revisit the subjunctive and be introduced to the passive voice. You will look at issues such as the death penalty and Vichy France.

In Grade 9, in Spanish, you will revisit the indicative mode and be introduced to the subjunctive and the passive voice. You will study these structures through the medium of topic-based units, such as types of discrimination in society and technological development. In Grade 10, you will revisit the indicative mode and be introduced to the subjunctive and the passive voice. You will look at issues such as the history of Spain through art, and social customs through literary works.

In German, Grades 9 and 10 are taught together. You will revisit a range of grammatical ideas, including more complex ones, such as the imperfect tense. You will study these structures through the medium of topic-based units such as human rights and the refugee crisis.

GRADES 11 AND 12 LANGUAGE ACQUISITION

GERMAN • FRENCH • SPANISH

Grade 11 and 12 courses allow you to further build on your prior knowledge of the language and to deepen your understanding of different cultures. ISZL, IBDP and AP® courses are available to meet the needs of all language learners.

IB Language B German Ab Initio (SL only)

Grades 11 and 12 • 2 years

IB

This is a fast-paced and engaging language course designed for students with little or no prior experience of German. You will begin with the basics, such as introducing yourself and talking about everyday life, and gradually build your ability to communicate about more complex topics, including issues like nuclear energy or substance use. The goal is to support you in progressing from a beginner to an intermediate communicator. Classes are typically small, which allows for personalised learning that targets your interests, strengths and language needs. A wide variety of activities and assessment tasks help you track your progress and understand your next steps. Games, songs, authentic texts, videos and digital tools are used throughout the course to make learning meaningful, enjoyable and interactive.

You are externally assessed by the IB through coursework (75%) and final examinations (25%).

IB Language B SL/HL: German • French • Spanish Grades 11 and 12 • 2 years

IB

In this course, you will continue to develop your linguistic competence and deepen your intercultural understanding through the exploration of the IB's five compulsory themes: identities, experiences, human ingenuity, social organisation, and sharing the planet. You will strengthen your command of key language skills through a range of engaging activities that build both your receptive (listening and reading) and productive (speaking and writing) abilities, helping you become more confident and spontaneous in your language use. You will also gain insight into the cultures and societies where the language is spoken. Through discussions, debates, role-plays, text analysis, and creative tasks, you will have frequent opportunities to express your ideas, develop your communication skills and use technology as a tool for learning. For students choosing the Higher Level (HL) course, there is an additional literary component designed to enrich your understanding of the language, broaden your cultural perspectives and strengthen your analytical skills.

You are externally assessed by the IB through coursework (75%) and final examinations (25%).

French • Spanish • German High Intermediate Grade 11 • AP® Prep • 1 year

ISZL

This course is designed to help you deepen your understanding of the language by engaging with meaningful topics in an informal, discussion-based setting. The aim is to consolidate and extend both your linguistic skills and your grammatical knowledge. You will explore a wide range of learning experiences, including podcasts, group assignments, and contemporary and historical texts, all chosen to encourage thoughtful discussion and broaden your cultural awareness. Because this is a flexible course without external examinations, you can focus on authentic communication and steady progress at your own pace. The course also helps prepare you for the AP® examination at the end of Grade 12, giving you time to develop confidence in both your spoken and written language. With a small group of like-minded peers, you will have a safe, supportive and enjoyable space to grow as a linguist and communicator.

AP® German • AP® French • AP® Spanish Language & Culture Grade 11 or 12 • 1 year

AP

In this course, you will strengthen your understanding of both the language and the culture of the target country by engaging with a wide variety of authentic texts. Through reading, listening and discussion, you will explore cultural norms, perspectives and ways of thinking on a range of contemporary and historical issues. You will deepen your knowledge of grammar, vocabulary and text structures while also developing your intercultural understanding. As this is a rigorous and fast-paced course, you are expected to begin with a solid foundation in the language; however, the course is designed specifically for non-native speakers. Lessons focus on analysing and responding to authentic materials on themes such as poverty, social change, the status of women, and the evolution of language. You will be encouraged to think critically, form arguments and express your ideas clearly through a range of engaging learning experiences.

You are externally assessed by the College Board through one final examination (100%).

ENGLISH AS AN ADDITIONAL LANGUAGE

English as an Additional Language (EAL) provides extra academic language support for students in Grades 9 and 10 who come from non-English-speaking backgrounds or have been educated primarily in another language. EAL students thrive in ISZL's supportive environment, where learning is meaningful, relevant, and tailored to their individual needs. Students who need additional English support to meet the academic demands of the MYP curriculum take an EAL course as one of their Language Acquisition options and may also receive in-class support. Using data and student-set goals, EAL teachers provide targeted support and collaborate with subject teachers to reinforce vocabulary, strengthen academic writing, and build confidence in English communication.

FREQUENTLY ASKED QUESTIONS

Is EAL support an MYP course?

No. The EAL course in Grades 9 and 10 is a support class that provides English language instruction and academic support for English-based subjects such as MYP English A: Language & Literature and MYP Individuals & Societies.

What is the balance between English academic support and English language instruction?

Over a two-week schedule, EAL lessons focus on a range of academic English skills that serve to support the skills needed in MYP classes and help to develop the student's overall language proficiency. The specific balance will change depending on the needs of the student.

How do I know if I need to take the EAL course?

All new students in Grades 9 and 10 who come from non-English-speaking backgrounds are assessed during the admissions process. Students are informed if they will take the course before starting at ISZL. Continuing EAL students are notified of their placement in May or June for the following year.

How long will I receive support in EAL?

EAL is offered for a maximum of two years. Decisions about continuation or transition are based on academic performance, teacher observation, and WIDA Model Online results.

Can I also study French, Spanish, or my first language if I take EAL?

The EAL course is scheduled at the same time as French, Spanish, and First Language classes. If you are concerned about maintaining your first language or continuing previous language study, please speak with the Assistant Principal.

Can I still receive support after exiting EAL?

Yes. The Student Support Services Team offers help through the Home Learning Club, where support is adapted to the needs of participating students. Students can also meet with the EAL teacher as needed for additional, targeted support.

English as an Additional Language 9 and 10 Grades 9 and/or 10 • 1 or 2 year(s)



In this course, you will learn to use English flexibly and effectively in an academic context. The course includes a range of activities designed to build students' independence in academic English. Learning will be personalised to meet individual needs, allowing students to focus on specific areas for growth. Students will analyse and practice the language skills required for the MYP to improve both competence and confidence in comprehending and composing subject-specific texts. Through grammar challenges, reading assignments, writing practice, and academic conversations, students will develop their overall academic English skills. This course is available only to students who meet ISZL's EAL entry requirements.



HUMANITIES

The study of the Humanities challenges students to understand their responsibilities in a changing world. It helps them develop the habits of mind, character, values, and commitment needed to make a positive difference. Humanities subjects include (but are not limited to) history, geography, economics, philosophy, politics, comparative religion, environmental systems, psychology, culture, and ethics. Through these areas of study, students learn to respect diverse heritages, traditions, and histories, and to understand how human and environmental systems influence one another — past, present, and future. The curriculum fosters inquiry, critical thinking, problem-solving, empathy, and action at personal, local, national, and global levels. It also encourages students to reflect on the many dimensions of human identity and experience, inspiring a lifelong interest in understanding the world and our place in it.

FREQUENTLY ASKED QUESTIONS

How many Individuals & Societies subjects can I take in the IB Diploma Programme?

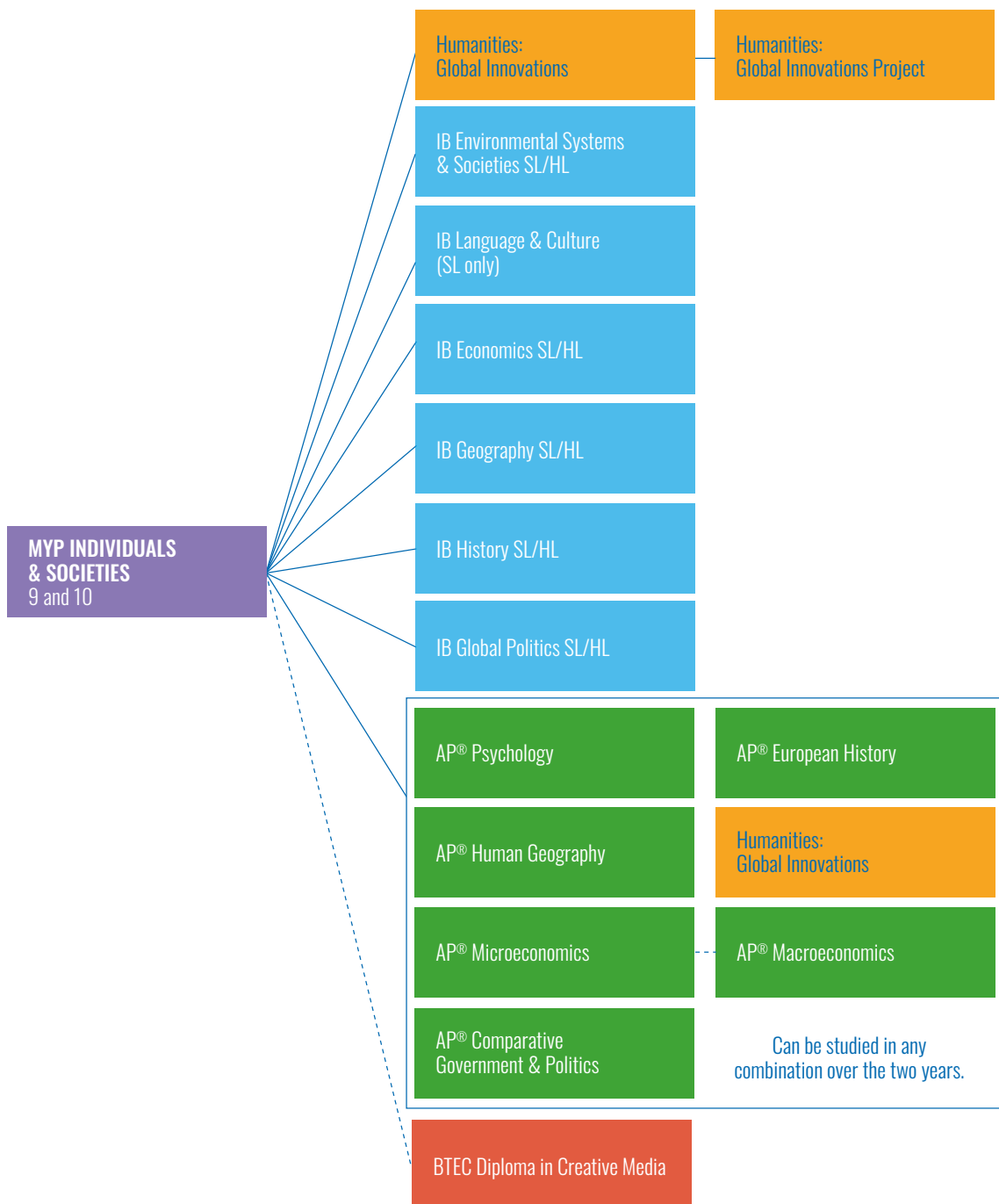
You may take two Individuals & Societies subjects if you do not select an Arts subject from Group 6.



HUMANITIES COURSE PROGRESSION

A minimum of three years of Humanities is required for graduation.

The BTEC Diploma in Creative Media counts toward Humanities graduation requirements. IB Environmental Systems & Societies (SL/HL) and AP® Psychology count toward both Humanities and Science graduation requirements. IB Language & Culture (SL) counts toward both English and Humanities graduation requirements.



MYP Individuals & Societies 9

Grade 9 • 1 year

MYP

This course deepens your understanding of the modern world by exploring how environments, governments and global conflicts shape societies. You will investigate the causes, course, and consequences of the Second World War, examining diverse experiences and major turning points. You will study global biomes, how humans modify them to produce food and materials, and the ongoing challenges of achieving sustainable food security. You will also analyse environmental change and consider strategies for managing sustainability at local, national and global levels. Finally, you will compare democratic and non-democratic political systems, explore the roles of key institutions, and consider the rights and responsibilities of individuals within different forms of government. Throughout the year, you will strengthen your research, communication and critical-thinking skills.

MYP Individuals & Societies 10

Grade 10 • 1 year

MYP

This course explores how global events, social movements, and changing ideas since 1945 have shaped modern societies. You will examine campaigns for civil and women's rights, shifts in attitudes toward migration, and the ongoing pursuit of equality and freedom. The course also investigates global influences such as technological change, human rights frameworks, international law and the role of the United Nations. You will study human wellbeing by comparing places using development measures, analysing why inequalities occur and how governments and organisations work to improve lives. Broader themes include democracy, citizenship and the challenges of sustaining cohesive societies. Throughout the year, you will develop strong inquiry skills by asking effective questions, analysing diverse sources, evaluating evidence and communicating well-reasoned conclusions.

IB Economics SL/HL

Grades 11 and 12 • 2 years

IB

Economics is a dynamic social science in which you will study scarcity and the challenge of how resources are allocated. You will examine the choices made by individuals, businesses and governments, and how these decisions affect both personal wellbeing and society as a whole. The subject draws on ideas from history, geography, psychology, sociology and political science, helping you build a broad understanding of how human societies function. You will also explore global inequality and the factors that separate the world's poorest nations from the richest.

You are externally assessed by the IB through coursework (20% at HL and 30% at SL) and final examinations (80% at HL and 70% at SL).

IB Geography SL/HL

Grades 11 and 12 • 2 years

IB

Geography is a dynamic and real-world subject that explores the Earth, the societies that inhabit it, and the major challenges facing both in the 21st century. You will investigate themes of global change, including population growth and migration, climate vulnerability and resilience, and the environmental impact of global consumption. You will also study extreme environments, and take part in hands-on fieldwork, such as measuring glacier systems here in Switzerland. At HL, you will further examine global power structures, development issues and risks to both the environment and the economy.

You are externally assessed by the IB through coursework (20% at HL and 30% at SL) and final examinations (80% at HL and 70% at SL).

IB Global Politics SL/HL Grades 11 and 12 • 2 years



Global Politics is a course for students who want to understand how the world works, what drives change, and what holds change back. Drawing on political science, international relations and the broader social sciences, you will explore contemporary political issues that matter to you. You will study a wide range of themes, including human rights, peace and conflict, and development, building your understanding through real-world case studies from around the world. A key focus of the course is the concept of power, how political systems function, why they change and how people influence that change.

You are externally assessed by the IB through coursework (20% at HL and 30% at SL) and final examinations (80% at HL and 70% at SL).

IB History SL/HL Grades 11 and 12 • 2 years



The course adopts a comparative, multi-perspective approach to major events of the 20th century, guided by key historical concepts such as change and continuity, cause and effect, significance, and historical perspectives. At Standard Level, you will develop source-analysis skills through two case studies focused on protest and change. You will also examine the rise and rule of authoritarian states from 1750 onward and complete an internal assessment involving an independent historical investigation into a 20th-century topic of your choice. At Higher Level, you will extend your understanding further by undertaking an in-depth study of the history of the Americas, exploring the region's political, social, and economic transformations in greater detail.

You are externally assessed by the IB through an internal assessment (20% at HL and 25% at SL) and final examinations (80% at HL and 75% at SL).

IB Language & Culture SL Grades 11 and 12 • 2 years



See course listing on page 47.

Humanities: Global Innovations Grades 11 and/or 12 • 1 or 2 years



Global Innovations is a project-based, entrepreneurial course that challenges students to creatively solve problems using a method of human centred innovation. It is built around the concepts of sustainability and ethical decision-making: environmental and social responsibility, regenerative economics and the opportunities provided by the fourth industrial revolution. Students learn the process of design thinking and the skills for creative problem-solving, including project management, research, communication, and collaboration. The process builds attributes of initiative, risk-taking, agility and resilience. The course has been designed using the method of human centred innovation at ETH Zurich and Stanford d.school. Assessment is portfolio-based using evidence from coursework projects.

Humanities: Independent Innovation Project Grade 12 • 1 year

INNO

This course gives you the opportunity to focus on a specific innovation challenge. You may continue developing a project from Year 1 or begin a completely new idea, working toward delivering an innovative product or solution for a real client or audience. With coaching from your teacher, you will create a prototype and/or develop a business plan that demonstrates your thinking, research and design process. The course culminates in a final presentation, where you will pitch your innovation to a panel of experts and receive feedback to refine your work further. Assessment is portfolio-based using evidence from coursework projects.

AP® Comparative Government & Politics Grade 11 or 12 • 1 year

AP

In this course, you will explore the rich diversity of political life around the world by comparing the political, economic and social systems of six prescribed countries: Great Britain, Mexico, Russia, Iran, China and Nigeria. You will examine how different governments address similar domestic and global challenges, and learn to evaluate the effectiveness of their systems, policies and approaches. A key focus of the course is developing your ability to identify patterns, make meaningful comparisons, and synthesise insights across countries. By the end, you will have a stronger understanding of how political institutions shape the world we live in today.

You are externally assessed by the College Board through one final examination (100%).

AP® Microeconomics Grade 11 or 12 • 1 year

AP

Microeconomics focuses on the behaviour of producers and consumers, exploring topics such as scarcity, market decisions and how firms determine price and output. By the end of the course, you will understand the language of economics and be able to apply key concepts to real-life situations. You will also learn to interpret and analyse graphs, charts and data to explain economic behaviour and outcomes. The course helps you view the world from a fresh economic perspective and builds a core competency for informed citizenship and many future careers.

You are externally assessed by the College Board through one final examination (100%).

AP® Macroeconomics Grade 11 or 12 • 1 year

AP

Macroeconomics explores the economy at a national and global level, focusing on topics such as inflation, unemployment, GDP, economic growth, and fiscal and monetary policy. By the end of the course, you will understand the language of economics and be able to apply key concepts to real-world events and trends. You will learn to generate, interpret and analyse graphs, charts and data to explain macroeconomic relationships and policy outcomes. The course develops skills that help you view the world through a broader economic lens and builds a core competency valuable for responsible citizenship and many future careers.

You are externally assessed by the College Board through one final examination (100%).

AP® European History Grade 11 or 12 • 1 year

AP

This course introduces you to the major cultural, economic, political and social developments in European history since 1450 — developments that have shaped the modern world. Understanding this history provides essential context for today's institutions, global challenges and forms of artistic expression and intellectual discourse. Alongside building a clear narrative of key events and movements, you will develop your ability to analyse historical evidence, evaluate differing interpretations and express your ideas through well-structured historical writing. You will practise forming theses, synthesising information and drawing meaningful conclusions.

You are externally assessed by the College Board through one final examination (100%).

AP® Psychology Grade 11 or 12 • 1 year

AP

In this course, you will explore the ideas, theories and research methods used to study behaviour and mental processes. Through reading, discussion and analysis, you will examine key psychological concepts and learn how to interpret data from research studies. You will also develop skills in evaluating evidence and understanding how psychological research is conducted.

You are externally assessed by the College Board through one final examination (100%).

AP® Human Geography Grade 11 or 12 • 1 year

AP

This course introduces you to the systematic study of the patterns and processes that shape humanity's use and understanding of the Earth's surface. You will learn to apply spatial concepts and landscape analysis to examine human organisation, economic activity and the environmental consequences of both. You will also explore the methods and tools geographers use in their work, including data interpretation, mapping and geographic technologies. Core topics include:

- Nature and perspectives of geography
- Population and migration
- Cultural patterns and processes
- Political organisation of space
- Agriculture, food production, and rural land use
- Industrialisation and economic development
- Cities and urban land use

You are externally assessed by the College Board through one final examination (100%).

BTEC Diploma in Creative Media Grade 11 and 12 • 2 years

BTEC

See course listing on page 38.

MATHEMATICS

Our goal is to empower students with the skills, conceptual understanding, and confidence to use mathematics as a tool for problem-solving, critical thinking, and exploring the world around them. We believe mathematics is not just about numbers, but about recognising patterns, relationships, and structures that help us make sense of the world. At ISZL, we emphasise both conceptual understanding and real-world application, preparing students to excel in future studies, careers, and as adaptable, compassionate contributors to a rapidly changing global society. Through our inquiry-based and concept-driven approach, students are encouraged to think beyond formulas and explore how mathematical ideas connect across disciplines. This focus on exploration builds confidence, curiosity, and the ability to see mathematics as a creative and meaningful part of everyday life.

FREQUENTLY ASKED QUESTIONS

What is the difference between MYP Mathematics and MYP Mathematics Extended?

Both courses cover the same breadth of content, but the Extended course explores topics in greater depth. The philosophy, assessment, and learning outcomes are the same, and students can move between the two levels — for example, between Grades 9 and 10 — in consultation with their Mathematics teacher and University Advisor, provided certain criteria are met.

What is the difference between AP[®] Statistics and ISZL Data and Statistical Practices?

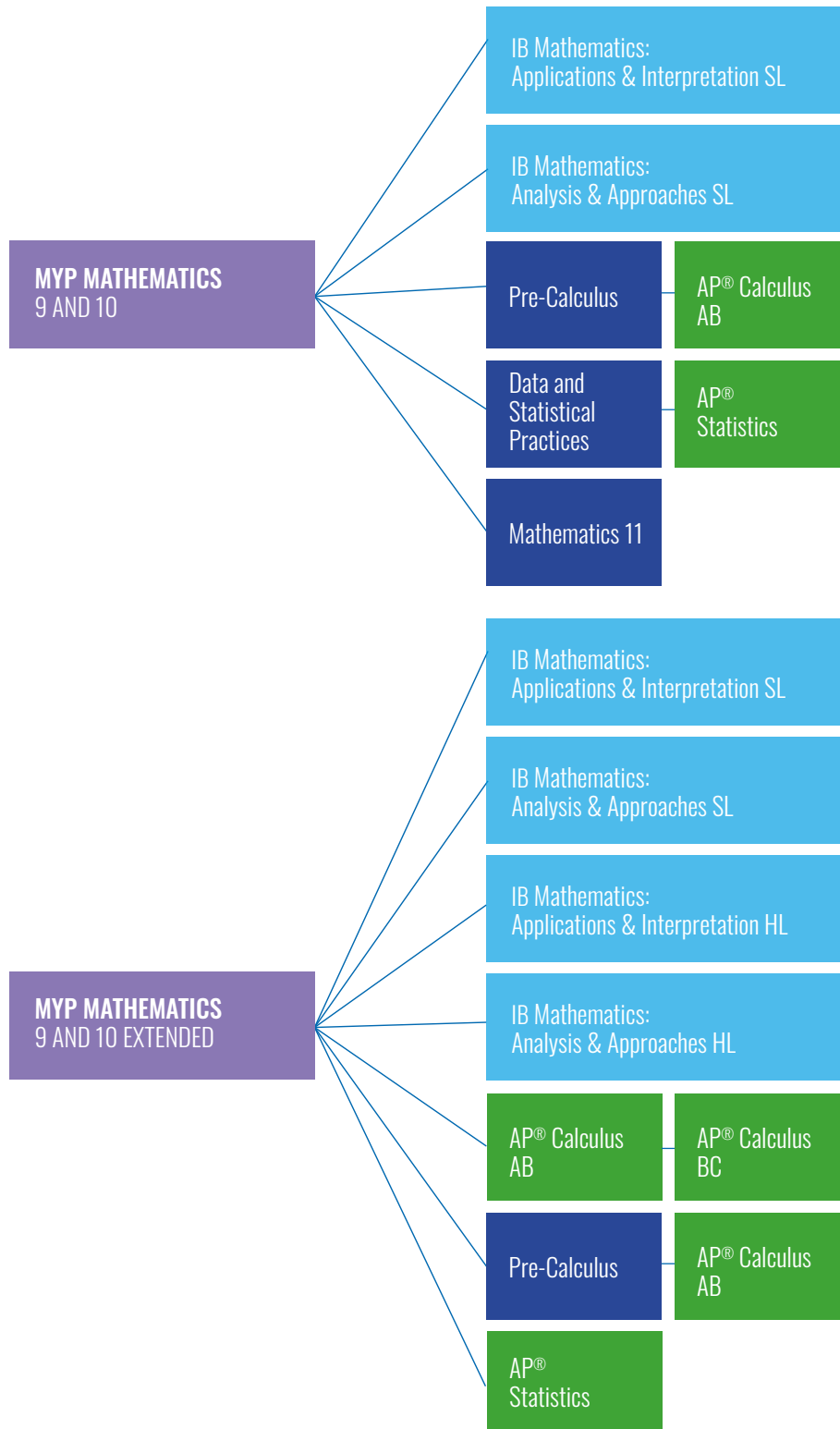
The main difference lies in assessment. AP[®] Statistics is externally assessed through a final College Board exam, which makes up 100% of the grade. The ISZL Data and Statistical Practices course includes projects, key data methods, and statistical skills assessed across both semesters. Both courses fulfil ISZL's mathematics graduation requirement.

Why should I take the AP[®] Statistics?

In today's data-driven world, statistics is essential across many academic and career pathways. If you are interested in fields that rely on data, such as business, psychology, biology, or environmental science, AP[®] Statistics can help you develop the analytical tools and critical thinking needed to interpret and apply data effectively. The course provides an excellent alternative to calculus and complements other ISZL and AP[®] courses, including Innovations, Human Geography, and Psychology.

MATHEMATICS COURSE PROGRESSION

At least three years of Mathematics is required for graduation.



MYP Mathematics 9 and MYP Mathematics 9 Extended **Grade 9 • 1 year**

MYP

The MYP Mathematics 9 and Mathematics Extended 9 courses are designed to develop your mathematical understanding, critical thinking and problem-solving skills. You will build a strong foundation for exploring mathematical concepts and applying them to real-world situations, strengthening both analytical and practical abilities. You will study key areas such as algebra, geometry and probability, with an emphasis on making connections between these topics and their applications in a variety of meaningful contexts.

MYP Mathematics 10 and MYP Mathematics 10 Extended **Grade 10 • 1 year**

MYP

The MYP Mathematics 10 and Mathematics Extended 10 courses build on the skills developed in earlier years and prepare you for the demands of mathematics in Grades 11 and 12. You will continue to develop your mathematical understanding, critical thinking and problem-solving abilities while strengthening your confidence in applying these skills independently. Core topics include advanced algebra, trigonometry and volume, statistics and functions, encouraging you to explore both analytical and applied aspects of mathematics and make meaningful connections across different areas of study.

IB Mathematics: Applications & Interpretation SL/HL **Grades 11 and 12 • 2 years**

IB

These courses recognise the growing importance of mathematics and technology across a wide range of fields in an increasingly data-rich world. They emphasise the application of mathematics in context, focusing on topics commonly used in modelling and problem-solving, such as functions, geometry, statistical methods and calculus. The skills developed in this course are valuable across many disciplines, including the social sciences (such as psychology and economics), business, design, and the natural sciences. The Higher Level (HL) course is well suited to students considering university pathways in architecture, computing or the sciences. HL topics extend learning into matrices, graph theory and algorithms, vectors and kinematics, and advanced calculus.

You are externally assessed by the IB through coursework (20%) and final examinations (80%).

IB Mathematics: Analysis & Approaches SL / HL **Grades 11 and 12 • 2 years**

IB

These courses recognise the growing need for strong analytical skills in a world where innovation relies on a deep understanding of mathematics. The focus is on developing key mathematical concepts and using them to solve abstract problems. You will learn to construct, communicate and justify mathematical arguments and explore the underlying principles of mathematics through topics such as functions, geometry, statistics and probability, and calculus. The Standard Level (SL) course is suited to students planning to study psychology, economics, business, design or the natural sciences. The Higher Level (HL) course is designed for students intending to study mathematics, or degrees that require advanced mathematical understanding, such as aerospace engineering, electrical engineering or physics. HL topics extend into proof, advanced calculus, and vectors and planes.

You are externally assessed by the IB through coursework (20%) and final examinations (80%).

Mathematics 11

Grade 11 • 1 year

IB

This course is designed to help you engage confidently with mathematics. It follows the content of the first year of the IB Mathematics: Applications & Interpretation SL course and recognises the growing importance of mathematics and technology across many fields in a data-rich world. The course emphasises the application of mathematics in context, focusing on topics commonly used in modelling and real-world problem-solving. The skills you develop will support learning in a wide range of disciplines, including the social sciences (such as psychology and economics), business, design, and the natural sciences.

Data and Statistical Practices

Grade 11 or Grade 12 • 1 year

ISZL

This course is designed to help you build confidence with data and statistics. It develops the conceptual understanding gained in the MYP and prepares you for the option of taking AP® Statistics. You will explore major concepts and tools for collecting, analysing and interpreting data, enabling you to make informed decisions using statistical reasoning. A key focus of the course is developing your technological fluency. You will learn practical skills using spreadsheets, Desmos and a graphing calculator. This course complements subjects in both the Humanities and the Sciences. You will work with four core statistical practices, which also underpin the AP® Statistics course:

- Formulating questions
- Collecting data
- Analysing data
- Interpreting results

A significant part of your grade will come from projects in which you collect and analyse your own data. These projects allow you to apply what you have learned and demonstrate your ability to think critically about real-world statistical questions.

AP® Statistics

Grade 11 or Grade 12 • 1 year

AP

AP® Statistics is a challenging and engaging course that builds on the conceptual understanding developed in the MYP. You will learn major tools and methods for collecting, analysing and interpreting data, developing the skills needed to make informed, evidence-based decisions. The course focuses on four key statistical practices:

- Formulating Questions
- Collecting Data
- Analysing Data
- Interpreting Results

You will investigate real-world problems, design and conduct studies, and apply statistical methods to draw meaningful conclusions. The course is a great companion to other courses such as those found in Humanities and the Sciences.

You are externally assessed by the College Board through one final examination (100%).

Pre-Calculus ISZL Grade 11 or Grade 12 • AP Prep • 1 year

ISZL

Pre-Calculus is a one-year course that covers the key elements of Grade 11 or 12 Mathematics, excluding calculus. After completing this course, you may choose to progress to AP[®] Calculus AB in your final year at ISZL or, if appropriate, conclude your mathematical studies at this level. You will explore a wide range of functions like quadratic, exponential, logarithmic and trigonometric, as well as the unit circle and trigonometric ratios in non-right-angled triangles. You will also learn to use a graphing calculator effectively to investigate unfamiliar problems, interpret results, and support your mathematical reasoning.

AP[®] Calculus AB Grade 11 or 12 • 1 year

AP

In this course, you will be introduced to the fundamental ideas and applications of differential and integral calculus, following the structure of a first-semester US university calculus course. You will work with functions in multiple forms including graphical, numerical, analytical and verbal, with an emphasis on understanding the connections between these representations. A graphing calculator will be used regularly to explore problems, interpret results and support your conclusions. In the first semester, you will study continuity and limits, and learn to differentiate polynomial, trigonometric, exponential and logarithmic functions, including applications such as optimisation and related rates. In the second semester, you will focus on integral calculus, exploring applications to area, volume and differential equations. Suitable indicators for this course include achieving at least a 7/8 in Criterion A in MYP Mathematics Extended or completing Pre-Calculus with a grade of 4/7 or higher.

You are externally assessed by the College Board through one final examination (100%).

AP[®] Calculus BC Grade 12 • 1 year

AP

You must complete AP[®] Calculus AB before enrolling in AP[®] Calculus BC. In this course you will study the second semester of US university-level calculus. You will deepen your understanding of advanced concepts such as areas bounded by polar curves, vector functions, tangents to parametric curves, integration by parts, logistic differential equations and population growth models, improper integrals, arc length, and sequences and series, including convergence, power series and Taylor series. Throughout the course, you will work with functions represented graphically, numerically, analytically and verbally, with a strong emphasis on making connections between these forms. You will also use a graphing calculator to explore unfamiliar problems, interpret results and support your conclusions.

You are externally assessed by the College Board through one final examination (100%).



PHYSICAL EDUCATION

Across Grades 9 and 10, all students take part in sport and physical activity, supporting ISZL's commitment to promoting physical activity for life. Classes are co-educational, with a strong emphasis on sportsmanship, cooperation, and full participation in a safe and enjoyable environment. Our goal is to bring "Meaning in Movement" to every student, helping them build the confidence to take part in both recreational and competitive activities. The curriculum is balanced between individual and team sports, focusing on transferable movement skills, techniques, and conceptual understanding. Students engage in a range of activities, whether that includes net and invasion games, ball sports, aesthetic movement, body management, or health-related fitness. Through these experiences, students discover the satisfaction of performing well, expressing themselves through movement, and developing a lifelong appreciation for physical activity and health.

FREQUENTLY ASKED QUESTIONS

Can Grade 10, 11, and 12 students use the fitness suite during lunch or after school?

Yes. Students in Grades 10–12 may use the fitness suite during lunch and after school. By this stage, they will have completed foundational fitness units in Grade 9, ensuring they understand safe and effective training practices.

Physical Education 9

Grade 9 • 1 year

ISZL

You will experience sport, fitness, and movement activities as the medium through which you explore cooperation, collaboration, teamwork, and social and self-responsibility. Through activities such as parkour, fitness training, games with implements, and group movement to music, you will strengthen a wide range of movement skills. In our Healthy Lifestyles unit, you will develop your understanding of effective fitness and wellness, helping you build a lifelong interest in health, physical activity and leisure sports that support your overall wellbeing. By the end of the course, you will have a deeper appreciation of the value of personal and social skills, the importance of embracing differences, and the role of clear communication in working toward shared goals. All classes are co-educational and place a strong emphasis on sportsmanship, cooperation and full participation in a safe, supportive environment. Our aim is to bring “Meaning in Movement” to each student, nurturing the confidence needed to engage in recreational activities or competitive sports throughout life.

Physical Education 10

Grade 10 • 1 year

ISZL

Through active participation, you will build a foundation for lifelong healthy, active living while discovering what makes movement enjoyable and meaningful for you. You will refine your skills across a range of activities, learning to recognise the characteristics of different games and sports and apply strategies that support your success, confidence and enjoyment. With a “challenge by choice” approach, you can engage at a level that stretches you appropriately and deepens your personal sense of “Meaning in Movement.” As you progress, you will take on greater responsibility for your learning by assessing your own skill development, creating an exercise programme, and taking on team roles within the sports education unit. These experiences will help you reflect critically on your fitness, set personal goals, and strengthen your understanding of health and physical activity. Collaboration and teamwork sit at the heart of the course, guiding you toward a positive, lifelong interest in health, fitness and physical activity.



SCIENCE

Science is a collaborative and continually evolving global endeavour. It is shaped by social, economic, technological, political, ethical, and cultural influences, and includes the traditional disciplines of Biology, Chemistry, and Physics, as well as contextual fields such as Environmental Systems & Societies (ESS) and Computer Science. At ISZL, science learning is grounded in inquiry: the process by which scientists study the natural and physical world and develop explanations based on evidence. This approach helps students form a deep, conceptual understanding while developing practical scientific skills and attitudes. Learning science is an active experience, combining hands-on and minds-on approaches. Students design and carry out investigations, analyse data, and draw evidence-based conclusions, developing the ability to think critically, solve problems, and communicate their findings clearly. The aim of studying science at ISZL is to build scientific literacy: the ability to understand scientific ideas, appreciate their global and cultural context, and apply them to real-world issues. Students gain the knowledge and perspective needed to comment thoughtfully on local and global developments, preparing them to make informed decisions and contribute meaningfully to solving the challenges of tomorrow.

FREQUENTLY ASKED QUESTIONS

Is there a limit to the number of science courses I can take at ISZL?

Yes. In the IB Diploma Programme, students may take two sciences. In exceptional cases, students may apply for a Non-Regular Diploma to take three sciences, if required for university admission. Evidence must be provided, and approval sought from the IB Diploma Coordinator and University Advisor before registering. Students may also take Environmental Systems & Societies (ESS) in addition to two sciences, as it fulfils requirements for both Individuals & Societies (Group 3) and Sciences (Group 4). The ISZL High School Programme offers greater flexibility.

Do I have to take IB Mathematics: Analysis & Approaches HL to understand Computer Science?

No, this is not required. However, students planning to study Computer Science at university should aim for strong mathematics results, as many institutions look for this background.

Do I need to be an experienced programmer to study Computer Science?

Not at all. IB Computer Science starts with the basics of coding. A logical and creative approach to problem-solving will help you succeed.

Do I need to take a Biology, Chemistry, or Physics AP® prep course in Grade 11 before the AP® course?

Yes, typically this is required for Biology and Chemistry. For Physics, there are multiple AP® options, and students may take AP® Physics 1 in Grade 11 without a prior prep course, depending on readiness and teacher recommendation.

Is there a mathematics requirement for science courses in Grades 11 and 12?

Yes. The AP® Physics 2 course requires students to have completed, or be concurrently enrolled in, AP® Calculus AB. While there are no specific requirements for other sciences, all science courses require students to apply mathematical concepts in data analysis and problem-solving.

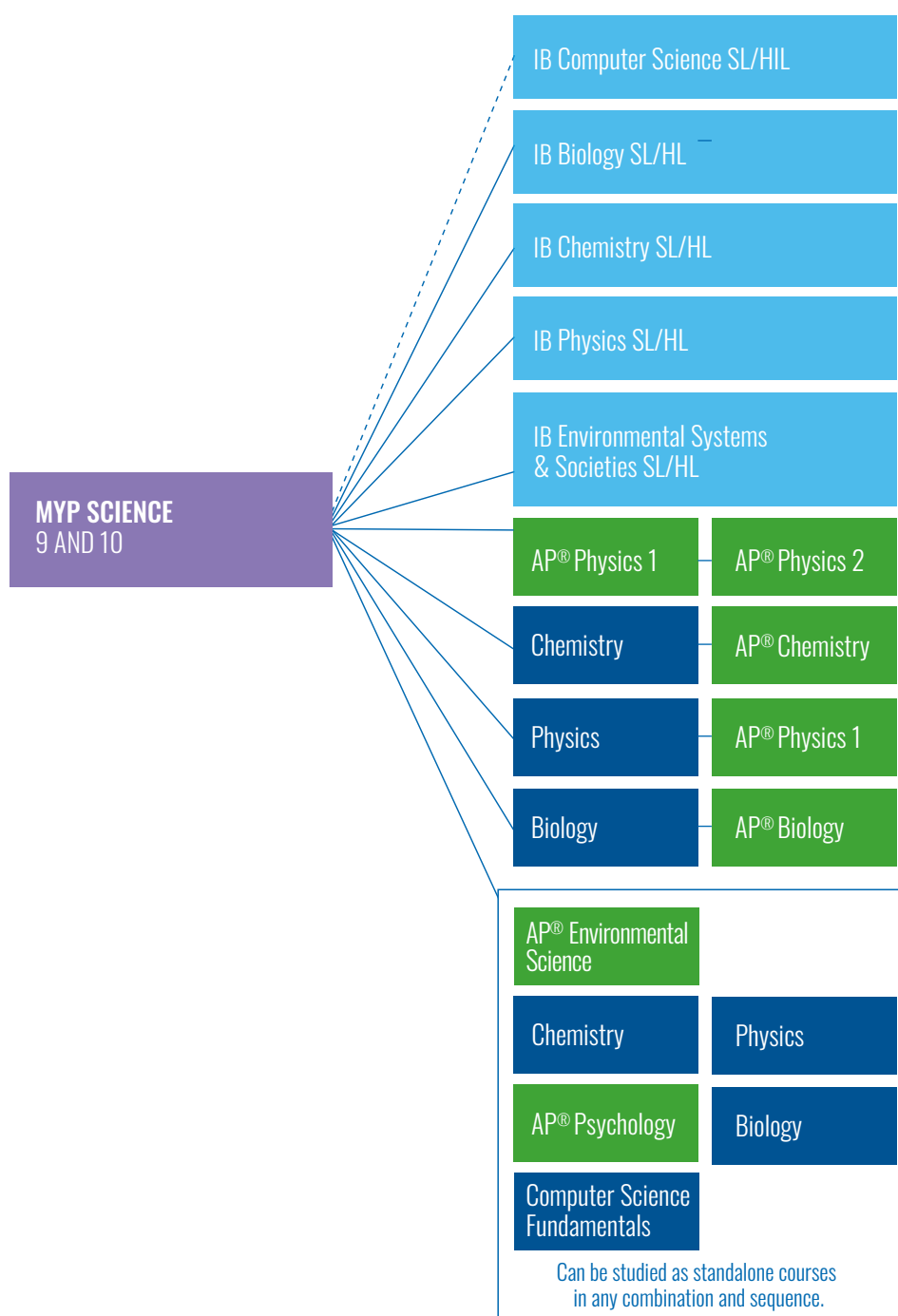
What is the Collaborative Sciences Project?

All IB Diploma students take part in the Collaborative Sciences Project, an interdisciplinary investigation that highlights the cooperative nature of science. Working in teams, students address a shared scientific challenge, applying knowledge and skills from across the sciences to produce a unified outcome.



SCIENCE COURSE PROGRESSION

At least three years of Science is required for graduation.
 IB Computer Science SL/HL counts towards science graduation requirements.
 IB Environmental Systems & Societies (SL/HL) and AP® Psychology count toward both Humanities and Science graduation requirements.



MYP Sciences 9 Grade 9 • 1 year

MYP

In this course, you will deepen your scientific understanding and learn how to apply it to solve problems and make evidence-based decisions. You will explore both familiar and unfamiliar situations, using your knowledge to develop creative and practical solutions. The course brings together key disciplines like physics, biology, chemistry and environmental systems to highlight how scientists collaborate to address real-world challenges. You will investigate topics ranging from evolution to electricity to the chemistry of being human while developing practical laboratory skills and scientific thinking. You will also consider the global implications of scientific advancements and how they shape our world, gaining insight into the responsibilities and possibilities that come with scientific knowledge.

MYP Sciences 10 Grade 10 • 1 year

MYP

This course deepens your scientific knowledge by exploring the connections between facts, concepts, laws, and theories. You will learn to apply this understanding to solve problems, make evidence-based decisions, and respond to challenges in both familiar and unfamiliar contexts. Your critical and scientific thinking will develop across key areas of science, including physics, biology, chemistry and environmental systems. You will engage with topics such as genetics, particulate chemistry and the principles of motion, while also examining the global impact of scientific advancements and their real-world applications. Throughout the year, you will build the skills needed to complete an individual investigation in a topic that inspires and interests you.

IB Biology SL/HL Grades 11 and 12 • 2 years

IB

From the inner workings of a single cell to the complexity of entire ecosystems, biology offers a window into how life functions, adapts and evolves. This course invites you to explore these ideas through hands-on investigation, discussion and experimentation. The curriculum emphasises strong conceptual understanding and the application of biological knowledge to new and unfamiliar situations. You will learn through case studies, inquiry-based laboratory work and modelling activities that help you analyse data, evaluate claims and think like a biologist. You will also conduct an individual investigation into a biological question that interests you.

You are externally assessed by the IB through coursework (20%) and final examinations (80%).

IB Chemistry SL/HL Grades 11 and 12 • 2 years

IB

In this course, you will acquire the body of knowledge, methods and techniques that characterise chemistry as a scientific discipline. You will develop your ability to analyse, evaluate and synthesise chemical information, along with a critical awareness of the value of effective collaboration and communication during chemical activities. Through experimental practice and investigative chemistry, including the use of current technologies, you will study areas such as stoichiometric relationships, atomic structure, bonding, energetics, kinetics and organic chemistry. You will also have the opportunity to carry out an individual investigation into an area of chemistry that inspires you.

You are externally assessed by the IB through coursework (20%) and final examinations (80%).

IB Computer Science SL/HL

Grade 12 • 1 year



Focused on computational thinking and problem solving, this course will develop your skills in these areas through the following units: Machine learning (AI and how it functions); Networking (how your data is sent around the world); Computer Fundamentals (how the inside of the computer works); Databases (how companies make use of big data); and Programming (how to develop your own programs). Your problem-solving, critical thinking and creativity skills will be fostered through practical tasks (learning by doing) and theoretical understanding. All students study all units with HL students studying additional material in each.

You are externally assessed by the IB through coursework (20% at HL and 25% at SL) and final examinations (80% at HL and 75% at SL).

IB Environmental Systems & Societies SL/HL

Grade 11 and 12 • 2 years



As an interdisciplinary course, Environmental Systems & Societies helps you understand the connections between environmental systems and human societies. You will explore how a systems approach, alongside an awareness of different perspectives, values and attitudes, can be used to examine sustainability and make informed decisions about the environmental challenges we face. Key concepts are explored through topics such as ecology, biodiversity and conservation, water and land systems, the atmosphere and climate change, natural resources, and human populations and urban environments. At HL, these themes are examined through additional lenses including Environmental Law, Environmental Economics and Environmental Ethics. Students appreciate the student-centred nature of the course, which includes several field trips and opportunities to investigate complex or controversial issues in a structured, thoughtful way.

You are externally assessed by the IB through coursework (20% at HL and 25% at SL) and final examinations (80% at HL and 75% at SL).

IB Physics SL/HL

Grades 11 and 12 • 2 years



This course offers both depth and breadth across the major fields of physics. You will explore topics such as space, time, motion, the particulate nature of matter, waves, field theory, and quantum and nuclear physics. At HL, each of these areas is studied in greater depth. Throughout the course, you will strengthen your ability to reason about physical phenomena by using key scientific skills, including explaining causal relationships, designing experiments, analysing data, and making connections across multiple topics. Practical work is an important part of the learning experience. Working in small teams, you will engage in hands-on investigations and learn to use a range of laboratory equipment to explore concepts and test ideas. These experiences will support you in understanding and articulating the laws that govern the physical world, as well as developing confidence in solving complex problems.

You are externally assessed by the IB through coursework (20%) and final examinations (80%).

Computer Science Fundamentals

Grade 11 or 12 • 1 year

ISZL

This course introduces students to the foundational ideas of computer science that underpin modern technology. Students will learn how to think computationally, write and analyse code, and design and use databases to solve real-world problems. Emphasis is placed on problem-solving, logical thinking, and transferable skills that are valuable across a wide range of careers in finance, data analysis, AI, health care and technology. The course is integrated with the IB Computer Science SL/HL course.

The course will be assessed with 75% final exam and 25% practical project.

Biology

Grade 11 or 12 • AP Prep • 1 year

ISZL

This is a rigorous course for students interested in pursuing science-related fields such as biology, marine biology, medicine, nursing, or veterinary science. It is equally valuable for students who want to deepen their understanding of current biological issues and develop the skills needed to think critically about real-world scenarios. You will explore a broad range of topics including the microscopic world of biochemistry, molecular biology, cell biology, photosynthesis, respiration, and genetics, to the wider interactions studied in ecology. The course combines engaging laboratory investigations with data-based questions to reinforce and extend your learning from the classroom.

Chemistry

Grade 11 or 12 • AP Prep • 1 year

ISZL

While studying chemistry, you will use a wide range of equipment and techniques to design and carry out experiments that investigate the world around you. Through these practical experiences, you will learn to analyse data critically and construct both mathematical and molecular models to explain your findings. You will be encouraged to present and defend your ideas, as well as question the ideas of your classmates, helping everyone to develop a deeper understanding of the nature of matter and energy. This course offers an engaging introduction to the fundamental principles of the physical sciences, with a strong emphasis on hands-on learning and discussion.

Physics

Grade 11 or 12 • AP Prep • 1 year

ISZL

This course builds a strong conceptual foundation in kinematics, mechanics and electricity, with a self-taught option in one additional area: thermodynamics, electric fields, optics or atomic physics. You will engage in a range of learning experiences, including class and team discussions, and practical investigations in small groups using equipment such as sensors and data-logging tools. By combining data analysis with theoretical study, you will develop a deep understanding of the concepts covered. In the final option, you will also have the opportunity to design elements of your own learning through student-led objectives, practical activities and assessments.

AP® Biology
Grade 12 • 1 year

AP

Biology is equivalent to a first-year university “General Biology” course in the United States. The curriculum emphasises conceptual understanding and the application of scientific practices to new and unfamiliar scenarios through case studies, inquiry-based laboratory experiences, and modelling activities. You will explore the core scientific principles, theories and processes that underpin living organisms and biological systems. Topics include: Chemistry of Life, Cell Structure and Transport, Cellular Energetics, Cell Communication and the Cell Cycle, Heredity, Gene Expression and Regulation, Natural Selection, and Ecology.

You are externally assessed by the College Board through one final examination (100%).

AP® Psychology
Grade 11 or 12 • 1 year

AP

See course listing on page 67.

AP® Chemistry
Grade 11 or 12 • 1 year

AP

In AP® Chemistry, you will engage with a rigorous, college-level curriculum. Each chemical concept is explored through a wide range of learning experiences and inquiry-based laboratory investigations. You will be introduced to advanced laboratory techniques such as titrations, colorimetry and gravimetric analysis, and you should expect an increased amount of home learning due to the academic challenge of the course. The curriculum centres on four big ideas in chemistry: Scale, Proportion and Quantity; Structure and Properties; Transformations; and Energy. Overall, this course provides excellent preparation for further study in any of the sciences.

You are externally assessed by the College Board through one final examination (100%).

AP® Environmental Science
Grade 11 or 12 • 1 year

AP

You will explore how the natural world works by investigating the complex relationships between living and non-living systems and the environmental challenges we face today. Throughout the course, you will identify and analyse both natural and human-made problems, evaluate the risks associated with them, and examine a range of possible solutions. Your learning goes beyond the scientific lens: you will consider environmental issues through political, economic, cultural and sociological perspectives to gain a deeper, more holistic understanding of how these challenges emerge, and how they might be addressed. Hands-on laboratory and field investigations will give you opportunities to apply scientific principles, gather and analyse data, and engage critically with contemporary environmental issues. These experiences will help you understand our natural systems more clearly and empower you to think creatively about meaningful, sustainable solutions.

You are externally assessed by the College Board through one final examination (100%).

AP® Physics 1 Grade 11 or 12 • 1 year

AP

This highly conceptual course takes you through an in-depth study of mechanics, including rotational motion, oscillations and waves, and current electricity. You will strengthen your ability to reason about physical phenomena by developing key science skills such as explaining causal relationships, applying and justifying mathematical routines, designing experiments, analysing data, and making connections across different areas of physics. Much of your learning will take place through practical, hands-on activities in small teams, giving you the opportunity to work with a variety of laboratory equipment and explore physical concepts in action. These experiences will help you better understand and communicate the laws that govern the physical world, while sharpening your ability to solve complex problems.

You are externally assessed by the College Board through one final examination (100%).

AP® Physics 2 Grade 12 • 1 year • First offering 2026-27

AP

AP® Physics 2 is an algebra-based, introductory college-level physics course. You will deepen your understanding of physics through inquiry-based investigations as you explore a wide range of topics, including thermodynamics; electric force, field and potential; electric circuits; magnetism and electromagnetic induction; geometric and physical optics; and quantum, atomic and nuclear physics. Throughout the course, you will apply scientific reasoning, analyse data, and connect concepts across different areas of physics to build a coherent understanding of how physical systems behave.

You are externally assessed by the College Board through one final examination (100%).



FOUR YEAR PLANNER

COMPLETE
4

MINIMUM 3 YEARS

MYP

ISZL

IB

AP

BTEC

INNO

GRADES 9 AND 10

GRADES 11 AND 12

ENGLISH	ENGLISH A: LANGUAGE & LITERATURE	
HUMANITIES	INDIVIDUALS & SOCIETIES	
SCIENCE	SCIENCES	
MATHEMATICS	MATHEMATICS ... or ... MATHEMATICS EXTENDED	

COMPLETE
AT LEAST
1

MINIMUM 2 YEARS

MYP

ISZL

IB

AP

BTEC

INNO

GRADES 9 AND 10

GRADES 11 AND 12

LANGUAGE (1)	GERMAN LANGUAGE ACQUISITION: PHASE 1-6 ... or ... GERMAN A: LANGUAGE & LITERATURE	
LANGUAGE (2)	FRENCH / SPANISH LANGUAGE ACQUISITION: VARIOUS PHASES ... or ... VARIOUS FIRST LANGUAGE PROGRAMME COURSES	

COMPLETE
AT LEAST
1

MINIMUM 2 YEARS

MYP

ISZL

IB

AP

BTEC

INNO

GRADES 9 AND 10

GRADES 11 AND 12

ARTS	THEATRE ... or ... MUSIC ... or ... VISUAL ARTS ... or ... MEDIA ARTS	
DESIGN	DESIGN	
PHYSICAL EDUCATION	PHYSICAL EDUCATION	

NOTES

A WORLD-CLASS LEARNING COMMUNITY

The International School of Zug and Luzern (ISZL) is an independent co-educational, non-profit day school serving the international community of Central Switzerland by providing a comprehensive education from Early Years to university preparation, from ages 3 to 18.

As an International Baccalaureate (IB) World School, ISZL is authorised by the IB Organisation to offer the Primary Years, Middle Years, IB Diploma and Career-related Pathway Programmes. In addition, students in Grades 11 and 12 have the option of taking Advanced Placement (AP) courses and exams, which are audited by the College Board.

ISZL has been accredited by the prestigious and highly respected Council of International Schools (CIS) and the New England Association of Schools and Colleges (NEASC). ISZL is a member of the Swiss Group of International Schools (SGIS) and the Educational Consortium of International Schools (ECIS).

ISZL is supervised by the Educational Authorities of the Canton of Zug and operates with their approval.

A NON-PROFIT FOUNDATION

ISZL is registered as a non-profit foundation (Stiftung) in Switzerland.

EINE LERNGEMEINSCHAFT DER WELTKLASSE

Die International School of Zug and Luzern (ISZL) ist eine unabhängige, gemeinnützige Tagesschule die der internationalen Gemeinschaft der Zentralschweiz eine umfassende Ausbildung vom Vorschulalter bis hin zur Universitätsvorbereitung für 3 - 18 Jährige anbietet.

ISZL ist als International Baccalaureate (IB) World School durch die IB Organisation autorisiert die Primary Years, Middle Years, IB Diploma und Career-related Pathway anzubieten. Ausserdem haben Schüler der 11. und 12. Klasse die Möglichkeit, Advanced Placement (AP) Kurse zu belegen und Examen abzulegen. Alle AP Kurse werden vom College Board überprüft.

ISZL ist akkreditiert vom renommierten und hochangesehenen Council of International Schools (CIS) und der New England Association of Schools and Colleges (NEASC). Die Schule zeigt damit, dass ihre akademischen Programme von höchster Qualität sind.

ISZL wird von der Bildungsbehörde des Kantons Zug beaufsichtigt, und wird mit deren Genehmigung geführt.

EINE GEMEINNÜTZIGE STIFTUNG

ISZL ist nach schweizerischem Recht als gemeinnützige Stiftung organisiert.



ISZL ZUG CAMPUS - MAIN OFFICE:

Walterswil 1, 6340 Baar, Switzerland
Tel. +41 41 768 2900
Email. office.zug@iszl.ch

ISZL RIVERSIDE CAMPUS:

Rothusstrasse 4b, 6331 Hünenberg, Switzerland
Tel. +41 41 768 2950
Email. office.riverside@iszl.ch