



ART ON A POSTCARD

RAISING PROCEEDS FOR
ST WILFRID'S HOSPICE

With thanks to



St Wilfrid's Hospice

Art on a Postcard raises money for the charity.
@artonapostcard | www.artonapostcard.com | #artonapostcard

ART ON A POSTCARD RAISING PROCEEDS FOR ST WILFRID'S HOSPICE

Art on a Postcard (AOAP) is delighted to collaborate with **St. Wilfrid's Hospice**, raising funds for the charity. The art on offer includes postcard-sized pieces from various artists, alongside ceramics and larger works.

In addition to renowned artists such as **Sir Grayson Perry CBE RA Hon FRIBA**, **Vanessa Jackson RA**, **Anita Kline**, **Mali Morris RA**, and **Jake Chapman**, we have selected several pieces with connections to the local area. This selection features a framed painting by **Mick Rooney RA**, who served as an artist in residence at **The Towner** during its time at the Manor Gardens site. There is also a piece by **Lothar Götz**, the artist responsible for painting the exterior of the Towner, as well as a large original painting by **Harold Mockford**, whose work was the subject of a major retrospective at the Towner in 2012.

We are deeply grateful to Emma Mason and her gallery, **Emma Mason Gallery**, for their generous donation of artworks by **James T.A. Osborne**, **Robert Tavener**, and **Fred Whitehead RCA**.

Joining the line-up is prominent British abstract artist **Winston Branch**, who graduated from the Slade in 1970 and whose work is held in numerous collections including the Tate Britain, the Victoria & Albert Museum, St. Louis Art Museum, the National Trust of St Lucia, and The University of California Berkeley Art Museum; Brighton-based artist **Pam Glew**, best known for her distinctive paintings on fabric, shown alongside artists like Tracey Emin and Peter Blake; Pakistani-born contemporary artist **Nasser Azam**, whose bronze statues have been unveiled on London's South Bank and London City Airport, the latter being the tallest public bronze statue in the UK; and emerging artist **Millicent Straker**, whose soft landscapes are informed by sketches

and then revisited in her London studio.

Many of the artists took the opportunity to incorporate the character of Eastbourne and the local surroundings of the hospice into their work, most notably **Sean Worrall**, who specifically went to Sussex to paint his signature landscapes; and **James Springall**, who puts Sussex native Pamela Rooke, 'The Queen of Punk', at the centre of his piece. We are also delighted to welcome back AOAP favourites **Susie Hamilton**, **Andrew Torr**, **Donna Mclean**, **Patrick Hughes**, **Alicia Rothman**, **Peter Jones**, **Andrew Mockett**, and **Kate Sherman**.

We are also extremely grateful to **Emma Mason** and her gallery, Emma Mason Gallery, for generously donating artworks by **James T.A. Osborne**, **Robert Tavener** and **Fred Whitehead RCA**.

The artworks will be on display on 29th September at the Towner Gallery, while they are hosting the prestigious Turner prize. The evening will be sponsored by 'Light', the new restaurant at the Towner Gallery.

A MESSAGE FROM GEMMA PEPPÉ

FOUNDER AND DIRECTOR OF ART ON A POSTCARD

After my father died in June 2022, I sent a thank you card to the nurses at St Wilfrid's who had cared for him during his last months. I was so grateful to the lovely, kind, and reassuring faces that appeared at our house daily, and the women on the end of the phone who frequently pacified us and had an answer for anything thrown at them. In the card, I mentioned that I ran Art on a Postcard (AOAP) and offered my help with fundraising, then forgot about it. A few weeks later, I received a call from Pam at St Wilfrid's, who welcomed me with open arms. After learning from Pam that they need £80k a week to keep the hospice running, we started work immediately. I have poured my heart and soul into curating this auction. My father loved Art on a Postcard. He was our most prolific producer of postcards, so doing one in his honour has been important to me, and he would have wholeheartedly approved of the funds going to St Wilfrid's. The auction includes a mix of AOAP favourites such as Patrick Hughes, Vanessa Gardiner, Mali Morris RA, Andrew Mockett, Peter Jones, Deborah Batt, Alicia Rothman, Fipsi Seelern, Sherry Kerlin, Mick Rooney RA, Donna McClean, Kelly Ann Davit, and many brilliant new and emerging artists. I reached out to numerous artists from the Sussex area because I wanted people to feel a connection to the charity.

I have also included many artists who had a connection with my father, like the late Robert Tavener, who was both his teacher and later his colleague. Simon Andrew, who has contributed four stunning oil landscapes, was the son of his flatmate David Andrew during his time at The Slade, and the stepson of his lifelong friend, the artist Jeremy Le Grice. Zebedee Helm was our next-door neighbour in Putney, and although Zeb was a baby at the time, his older brother Alexander was my first best friend and partner in crime. Mark's student, Andy Ellis, has donated four charming postcards. We have

a beautiful painting by his dear friend, Harold Mockford, who passed away earlier this year and had attended Eastbourne Art School with him during their foundational years. My sister-in-law Charlotte MacMillan has produced a lovely artwork, as has her mother Deborah MacMillan, with whom my father forged a warm friendship. I have also featured a wonderful wood engraving from the 1930s by my Great Aunt Elfie, whom my father was very fond of and who was perhaps a missed talent, born into the wrong era.

Jenny Pery has kindly donated a woodcut as part of the postcard auction and two very lovely monotypes to the third auction of larger pieces. My father painted The Pery's in the early 1970s and they remained friends thereafter.

Friends of AOAP, Sean Worrall, and James Springall both rose to the challenge of creating something special for Eastbourne. Painter Robert E Wells, known for his paintings of East Sussex farm animals in addition to his excellent postcard-sized works, has also donated a number of beautiful books showcasing his work, and a larger painting too. I feel that everyone involved has gone the extra mile for the hospice.

Thank you to my brilliant team: Sandra, Moriah, and Rosie. Thank you to all of the Mockford's especially Polly for donating their father's work. Thank you to each of my brothers and sister: Luke, Daniel, and Victoria, who have all donated something. I'm profoundly grateful to Emma Mason, who donated the Robert Tavener, along with a James TA Osborne print and a Fred Whitehead painting. Working with the team at St Wilfrid's has been a pleasure; their perpetual smiles and laughter make St Wilf's a special place. And finally, a special mention to my mum Tereska Peppé.

HOW TO BID WITH THE AUCTION COLLECTIVE

STEP 1: REGISTER FOR THE AUCTION

Visit our auction page and register for the auction. You will need to have an account with The Auction Collective to register for the auction.

Please note that there are **three auctions**, two for **postcard-sized artworks** and one for the **larger pieces**, including paintings and ceramics. You must register for each auction separately. You can register for both auction using the QR codes.

STEP 2: BEGIN BIDDING

Once bidding opens you will be able to place your 'Maximum bid'. The platform will automatically bid for you against other bidders in bidding increments. You will be notified if you have been outbid and will be given a chance to counter. Any bids placed last minute of the auction extend the entire auction by two minutes so that everyone has the chance to bid again.

For more information, please view The Auction Collective's **video on timed online auctions by clicking here** and their **article on how to bid by clicking here**.

STEP 3: WIN YOUR BID!

The bidder with the highest bid when the countdown times out will win the piece. The winning bidder will receive an email notifying them of their success and will be provided further instructions on payment from the AoaP team.

****Please note that this will not be a cascading auction; all the lots in each auction will close at the same time.***

Any bids placed in the last minute extend the bidding on all the lots in the auction by two minutes. If you have been outbid, you will receive an email notification to allow you the chance to counterbid.

We encourage you to place your maximum bids in good time, to allow the system to bid for you.

THE AUCTIONS



The Postcards



The Postcards II



The Paintings and Ceramics

ABOUT ST WILFRID'S HOSPICE



At **St Wilfrid's Hospice** our vision is of a community where people talk openly about dying, live well until the end of their life and where nobody dies alone, afraid or in pain. We provide **high-quality whole-person care** for around 2,350 people every year, including patients with life-limiting illnesses and their families. Serving a population of around 245,000 our community extends across Eastbourne, Seaford, Hailsham, Uckfield, Heathfield (and all the points in between).

Our expert teams support the **physical, emotional, psychological, spiritual and practical needs** of our patients and their families and carers. We provide nursing and medical care and therapies in patients' own homes and care homes, in our Inpatient Unit and through our Living Well Hub, as well as through Nurse Line, our 24/7 telephone advice line. The hospice also provides bereavement support for adults and children throughout the catchment area,

whether or not their family has been cared for by the hospice.

Molly's Story

Bob and Molly were married for 58 years, meeting as teenagers and building a life together. 'Everybody loved Molly,' says Bob. 'She was one of those people who lit up a room. I know it's a cliché but she did. She was gentle, and she would smile, and she was always strong.'

Molly first became ill in 2019, having an operation to remove a lump in her breast and receiving the all clear. Two years later the cancer was back, initially in her breast and then moving to her liver. 'I think then we were both under the impression that she was going to get better – that it was treatable,' said Bob.

'But then she became weak – very weak. One



afternoon I was sitting at home with her and I said “Moll we need to get you some help,” so we went to the GP who got her into hospital that afternoon. But Molly was deteriorating, and she was referred to the hospice Inpatient Unit.

‘They were brilliant - the doctors, the care support workers who used to come in and turn Molly over, and clean her.

‘Everyone was so, so kind,’ he says. ‘There was nothing they wouldn’t do for her, or me.

‘I spent the last three weeks staying overnight with Molly and, in the middle of the night, they would come in and treat her. When Molly died, I was with her – with our youngest son James – and I remember the nurse, she just held me. I’ll never forget that.

‘I know that if the hospice wasn’t there for people, it would be much crueller, a much

crueller end,’ he says. ‘If you’re going to die – and we’re all going to die – you couldn’t wish for a better place.’

Thank you from St Wilfrid's

We want to say a huge thank you to everyone who is supporting this special Art on a Postcard auction.

It costs over £19,000 a day to provide our care and support services across our catchment area, but less than 30% of this comes from the NHS. We count on the community to help us with the rest, meaning that every donation makes a difference to the support we can offer patients and their families.

Whether you have donated a piece of art or are bidding on a lot, your generosity means that we can be here for more people like Molly and Bob.

If you would like to find out more about St Wilfrid’s Hospice please contact Emma Warner.

Emma.warner@stwhospice.org
www.stwhospice.org

PARTICIPATING ARTISTS

Adam Bridgland • Alan Coulson • Alex Jorgensen • Alexander Johnson • Alicia Rothman • Andrew Mockett • Andrew Torr • Andy Ellis • Angry Dan • Anita Klein • Anne-Marie Butlin • Annette Fernando • Brendan Neiland RA • Carol Hodder • Carys Evans • Cathy Cullis • Catriona Millar • Charlotte MacMillan • Chris Daniels • Claire Partington • Claire Shakespeare • Daisy Clarke • Dan Baldwin • Darren Slater • David Bray • Deborah Batt • Deborah MacMillan • Diego Palacios • Donna Mclean • Duncan Bullen • Elfie Peppé • Elinor Evans • Emma Harvey • Fiona Bradford • Fipsi Seilern / Pang • Fred Whitehead RCA • Freyja Lee • Georgia Hayes • Graham Dean • Grayson Perry CBE RA HON FRIBA • Habib Hajallie • Harold Mockford • Haydn Cottam • Heath Kane • Helen Stotesworthy • Holly Halkes • Ian Archie Beck • J.F.K Turner • Jacqueline Colley • Jake Chapman • James Springall • James TA Osborne • Jane Walker • Jenny Pery • Jo Dumbleton • Joanna Farrow • Joe Webb • John Bartlett • John Emanuel • John Hainsworth •

Juliet. E. P. Gibbs • Kate Montgomery • Kate Sherman • Kelly-Anne Davitt • Kevin Hendley • Kirsty Lackie • Laima Laurina • Lorena Levi • Lothar Götz • LUAP • Luke Woodgate • Lynn Hanford-Day • Mali Morris RA • Mark Peppé • Matt Dosa • Mercedes Workman • Mick Rooney RA • Millicent Straker • Nasser Azam • Nessie Ramm • Nici Bungey • Nick Carrick • Nick Grindrod • Nigel Greaves • Pam Glew • Patrick Hughes • Patsy McArthur • Paula MacArthur • Peter Clossick NEAC PPLG • Peter Jones • Rebecca Tucker • Richard Barrett • Richard Davidson • Robert E. Wells • Robert Tavener • Rosie Emerson • Ruth Philo • Sarah Gillespie • Sean Worrall • Sherry Kerlin • Simon Andrew • Sonia Barton • Susie Hamilton • Theo Gorst • Tom Wilmott • Tooney Phillips • Vanessa Gardiner • Vanessa Jackson RA • Winston Branch • Yuki Aruga • Zebedee Helm

We would like to thank all of the contributing artists for their outstanding work and generosity.



1. John Emanuel - Harbour (Etching)



2. Carol Hodder - Sea Horse (Mixed Media on card)



3. Carol Hodder - Ice Moon (Mixed Media on Card)



4. Kate Montgomery - Down by the Sea (Casein on board)



5. Anita Klein - Nap Time (Linocut and Watercolour on paper)



6. Anita Klein - Women On The Beach (Linocut and Watercolour on paper)



7. Anita Klein - Sacha Sleeping (Linocut and Watercolour on paper)



8. Anita Klein - Spring Bird (Linocut and Watercolour on paper)



9. Robert E. Wells - Cow Fields Chalk Farm East Sussex (Oil on watercolour paper)



10. Robert E. Wells - Sheep Goathland North Yorkshire Moors (Oil on watercolour paper)



11. Robert E. Wells - Cows Pevensey East Sussex (Pencil on watercolour paper)



12. Dan Baldwin - Rabbit (Pure pigment/acrylic on paper)



13. Dan Baldwin - Nightingale (Pure pigment/acrylic on paper)



14. Dan Baldwin - Deer (Pure pigment/acrylic on paper)



15. Graham Dean - Small With You (Watercolour on paper)



16. Graham Dean - Small Head (Watercolour on paper)



17. Graham Dean - Small K (Watercolour on paper)



18. Daisy Clarke - Tiger in Sunset (Gouache on paper)



19. Daisy Clarke - Red Roses (Gouache, ink on paper)



20. Daisy Clarke - Sunsetting (Watercolour, ink on paper)



21. Daisy Clarke - Crescent Moon (Gouache, ink watercolour)



22. Kevin Hendley - Postcard Sketch 1 for 'Mr Smiley' (Watercolour on paper)



23. Kevin Hendley - Postcard Sketch 2 for 'Mr Smiley' (Watercolour on paper)



24. Kevin Hendley - Postcard Sketch 3 for 'Mr Smiley' (Watercolour on paper)



25. Kevin Hendley - Postcard Sketch 4 for 'Mr Smiley' (Watercolour on paper)



26. Mali Morris RA - Circus (Silk screen and collage on paper)



27. Yuki Aruga - Color Tests of: Study: The Flower of Forgetting (1) (Colour pencil, watercolour and gouache on paper)



28. Yuki Aruga - Color Tests of: Study: The Flower of Forgetting (2) (Colour pencil, watercolour and gouache on paper)



29. Yuki Aruga - Study: The Flower of Forgetting (Colour pencil and watercolour on paper)



30. Richard Barrett - YR WYDDFA (Acrylic on paper)



31. Richard Barrett - Halls Fell Ridge (Acrylic on paper)



32. Richard Barrett - Striding Edge (Acrylic on paper)



33. Richard Barrett - Cribyn (Acrylic on paper)



34. Andrew Mockett - Parsley + Rosemary (Prismalo Pencil on paper)



35. Andrew Mockett - Pals (Prismalo Pencil on paper)



36. Andrew Mockett - Muppet Babies (Prismalo Pencil on paper)



37. Andrew Mockett - Matchboy 30 (new) (Prismalo Pencil on paper)



38. Simon Andrew - Postcard Landscape 1 (Oil on paper)



39. Simon Andrew - Postcard Landscape 2 (Oil on paper)



40. Simon Andrew - Postcard Landscape 3 (Oil on paper)



41. Simon Andrew - Postcard Landscape 4 (Oil on paper)



42. Haydn Cottam - Splash Point (Oil on paper)



43. Haydn Cottam - Ice Island (Oil on paper)



44. Peter Clossick NEAC PPLG - Lockdown Selfie (Ink and Tippex on paper)



45. Peter Clossick NEAC PPLG - Study for Self (Ink and Tippex on paper)



46. Peter Clossick NEAC PPLG - Life Model Study (Ink and Tippex on paper)



47. Peter Clossick NEAC PPLG - Sophia (Pen and Ink on paper)



48. Nick Carrick - Sea Swimmer (Oil on paper)



49. Nick Carrick - Pink Terra (Oil on paper)



50. Nick Carrick - Road to the Mountains (Oil on paper)



51. Nick Carrick - Blossom (Oil on paper)



52. Joanna Farrow - Evening Light (Oil on paper)



53. Joanna Farrow - Waving Grasses (Oil on paper)



54. Joanna Farrow - Pine Clump (Oil on paper)



55. Joanna Farrow - Over the Hedgerow (Oil on paper)



56. Brendan Neiland RA - Fragments I (Acrylic on paper)



57. Brendan Neiland RA - Fragments II (Acrylic on paper)



58. Brendan Neiland RA - Fragments III (Acrylic on paper)



59. Brendan Neiland RA - Fragments IV (Acrylic on paper)



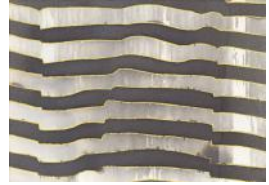
60. Rebecca Tucker - Folds I (Ink and mixed media on paper)



61. Rebecca Tucker - Folds II (Ink and mixed media on paper)



62. Rebecca Tucker - Folds III (Ink and mixed media on paper)



63. Rebecca Tucker - Folds IV (Ink and mixed media on paper)



64. Alexander Johnson - Chrome Princess (Charcoal, varnish and spray paint on paper)



65. Alexander Johnson - Zurbaran Hoodie (Charcoal, varnish and spray paint on paper)



66. Alexander Johnson - Mini Meninas (Charcoal, varnish and spray paint on paper)



67. Alexander Johnson - The Pink Painter (Charcoal, varnish and spray paint on paper)



68. Vanessa Jackson RA - Wisk (1) (Acrylic on paper)



69. Vanessa Jackson RA - Wisk (2) (Acrylic on paper)



70. Vanessa Jackson RA - Wisk (3) (Acrylic on paper)



71. Vanessa Jackson RA - Wisk (4) (Acrylic on paper)



72. Ian Archie Beck - Summer (Ink and watercolour paper)



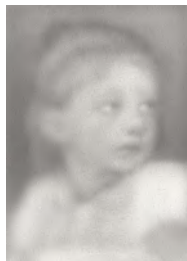
73. Ian Archie Beck - The Garland
(Ink and watercolour paper)



74. Ian Archie Beck - Peas & Lemons
(Watercolour and ink on paper)



75. Ian Archie Beck - Tulips
(Watercolour and pencil on paper)



76. Sherry Kerlin - Little Girl
Frightened by a Clown (1) (Ink on
paper)



77. Sherry Kerlin - Little Girl
Frightened by a Clown (2) (Ink on
paper)



78. Georgia Hayes - Before the
Storm (Watercolour on paper)



79. Georgia Hayes - Dog Friends
(Watercolour and crayon on paper)



80. Peter Jones - Goldfish (Oil on
paper)



81. Peter Jones - Shark (Oil on
paper)



82. Sarah Gillespie - Beetles
(Drypoint on paper)



83. Sarah Gillespie - Blackbird
(Mezzotint on paper)



84. Alicia Rothman - Dog (Oil on
gessoed card)



85. Alicia Rothman - Red Rider (Oil on card)



86. Alicia Rothman - Ruby (Oil on gessoed card)



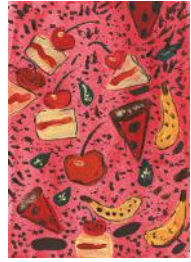
87. Kate Sherman - Shade 1 (Oil on paper)



88. Kate Sherman - Shade 2 (Oil on paper)



89. Holly Halkes - Tutti Frutti (Gouache and pen on paper)



90. Holly Halkes - Slice (Gouache and pen on paper)



91. John Bartlett - Milk Vase & Pears (Acrylic and pencil on paper)



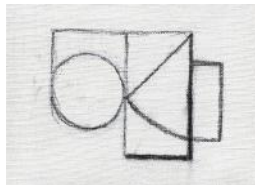
92. John Bartlett - Pot Plant (Acrylic and chalk on paper)



93. John Bartlett - Fruit Bowl (Acrylic and pencil on paper)



94. John Bartlett - Vases & Fruit (Acrylic, oil, pencil and chalk on paper)



95. Alex Jorgensen - Untitled.SP3.1 (Charcoal on paper)



96. Alex Jorgensen - Untitled.SP3.2 (Oil on paper)



97. Alex Jorgensen - Untitled.SP3.3
(Oil on paper)



98. David Bray - This Look (Pencil
on paper)



99. David Bray - That Look (Pencil
on paper)



100. Jane Walker - Stripes
(Watercolour on paper)



101. Jane Walker - Tulips
(Watercolour on paper)



102. Jane Walker - Stars
(Watercolour on paper)



103. Jane Walker - Pear & Stars
(Watercolour on paper)



104. Jo Dumpleton - Poor Little
Pierrette (Coloured pencil on
paper)



105. Elinor Evans - Afternoon Ride
(Oil on paper)



106. Joe Webb - Hurry! Get A life
(Collage on paper)



107. Joe Webb - You Beautiful
Delinquent (Collage on paper)



108. Joe Webb - Drink Every Night
(Collage on paper)



109. Luap - Be Unique (Watercolour on paper)



110. Nick Grindrod - Two x Four (Acrylics on paper)



111. Nick Grindrod - Four x Two (Acrylics on paper)



112. Nick Grindrod - Pool Slide (Acrylics on paper)



113. Nick Grindrod - Green + Pleasant Land (Acrylics on paper)



114. Deborah Batt - Caravan III (Acrylic and pen on paper)



115. Darren Slater - April (Acrylic on paper)



116. Darren Slater - Awaiting Rain (Acrylic on paper)



117. Darren Slater - Meadow (Acrylic on paper)



118. Darren Slater - A Hidden View (Acrylic on paper)



119. Grayson Perry CBE RA HON FRIBA - Conspiracy Fact! (Ink on paper)



120. Grayson Perry CBE RA HON FRIBA - Notes On Architecture (Ink on paper)



121. Grayson Perry CBE RA HON FRIBA - The Cat's Burden (Ink on paper)



122. Grayson Perry CBE RA HON FRIBA - The Countryside (Ink on paper)



123. Vanessa Gardiner - Sea Cliffs (Orkney) (Acrylic on paper)



124. Vanessa Gardiner - Kamini Walk (Hydra) (Acrylic on card)



125. Vanessa Gardiner - Kamini Walk (Hydra) 2 (Acrylic on card)



126. Vanessa Gardiner - Kamini Walk (Hydra) 3 (Acrylic on card)



127. Nigel Greaves - Positive Moods (Acrylic on card)



128. Nigel Greaves - Positive Vibes (Acrylic on card)



129. Nigel Greaves - Yachts Becalmed (Acrylic on card)



130. Nigel Greaves - Yachts Becalmed Late Evening (Acrylic on card)



131. Duncan Bullen - Reflection 1 V2 (Colour pencil on paper)



132. Duncan Bullen - Reflection 2 V2 (Colour pencil on paper)



133. Lothar Götz - Untitled 1
(Watercolour on paper)



134. Lothar Götz - Untitled 2
(Watercolour on paper)



135. Lothar Götz - Untitled 3
(Watercolour on paper)



136. Lothar Götz - Untitled 4
(Watercolour on paper)



137. Sonia Barton - Snowdrops In A
Stripey Mug (Acrylic on paper)



138. Sonia Barton - White Flowers
In A Patterned Mug (Acrylic on
paper)



139. Kelly-Anne Davitt - Divine
Drumstick (Oil on canvas board)



140. Patrick Hughes - Down Stairs
(Ink and pencil on paper)



141. Luke Woodgate - Lefty (Acrylic
paint, pen and ink on paper)



142. Lorena Levi - Father and Child
(Oil paint on paper)



143. Lorena Levi - Eve's Smile
(Colour pencil on paper)



144. Lorena Levi - New To The
Scene (Ink pen on paper)



145. Lorena Levi - Shopping Bags They Weigh Down Your Arms (Oil paint on paper)



146. Juliet. E. P. Gibbs - One Orange (Unique Monoprint (Screenprint))



147. Juliet. E. P. Gibbs - No Fruit (Unique Monoprint (Screenprint))



148. Jacqueline Colley - Sundae 1 (Felt tip and pencil crayon on paper)



149. Jacqueline Colley - Sundae 2 (Felt tip and pencil crayon on paper)



150. Jacqueline Colley - Jelly 1 (Felt tip and pencil crayon on paper)



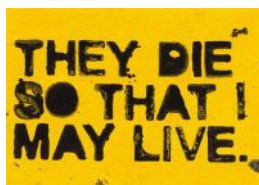
151. Jacqueline Colley - Jelly 2 (Felt tip and pencil crayon on paper)



152. Tom Wilmott - Soundbite Painting XIX (Ink and oil on paper)



153. Tom Wilmott - Soundbite Painting XX (Ink and oil on paper)



154. Tom Wilmott - Soundbite Painting XXI (Ink on paper)



155. Tom Wilmott - Soundbite Painting XXII (Ink on paper)



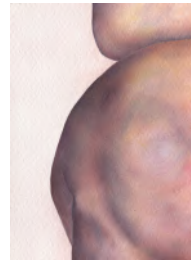
156. Nasser Azam - After Carolyn (Red) (Unique hand embellished print with acrylic and oil on paper)



157. Nasser Azam - China White X1.2X (Unique hand embellished print with acrylic and oil on paper)



158. Nasser Azam - Poppy (Blue-MMXXIII) (Unique hand embellished print with acrylic and oil on paper)



159. Helen Stotesworthy - She Did Steps Two & Ten (Oil on paper)



160. Helen Stotesworthy - She Made It Too Complicated (Oil on paper)



161. Fiona Bradford - Once I Had A Sweetheart (Oil on card)



162. Fiona Bradford - Broken Wings (Oil on card)



163. Emma Harvey - Fuck Your Boys Club (Mixed media on paper)



164. Emma Harvey - This Is Our Time (Oil paint and acrylic on paper)



165. Emma Harvey - This Is Our Scene (Oil paint on paper)



166. Rosie Emerson - Firefly (Photopolymer etching)



167. Claire Shakespeare - Blue Stripe (Oil, pastel and pencil on black paper)



168. Claire Shakespeare - Garden Leaves (Pencil and pen on paper)



169. Claire Shakespeare - Peachy Limbs (Pen, pencil and acrylic on paper)



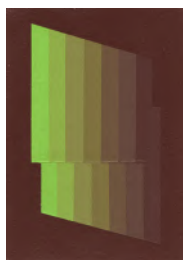
170. Claire Shakespeare - Berry (Acrylic, enamel and graphite on green paper)



171. Cathy Cullis - Untitled Portrait I (Gouache on paper)



172. Cathy Cullis - Untitled Portrait II (Gouache on paper)



173. Chris Daniels - Machbands (Chroma) Study I (Acrylic on paper)



174. Chris Daniels - Machbands (Chroma) Study II (Acrylic on paper)



175. Chris Daniels - Machbands (Chroma) Study III (Acrylic on paper)



176. Chris Daniels - Machbands (Chroma) IV (Acrylic on paper)



177. Kirsty Lackie - The Apology (Oil pastel and charcoal on paper)



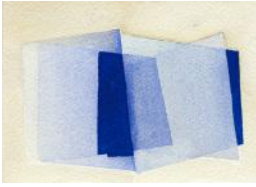
178. Kirsty Lackie - Eurocamp 1999 (Oil pastel and charcoal on paper)



179. Kirsty Lackie - I'm An Angel, I'm An Angel, I'm An Angel (Oil Pastel and Charcoal on paper)



180. Tooney Phillips - See Through I (Watercolour on paper)



181. Tooney Phillips - See Through II (Watercolour on paper)



182. Millicent Straker - Smooth Operator (Oil on paper)



183. Millicent Straker - A Blood Moon in July (Oil on paper)



184. Annette Fernando - It's Like a Bubble That's Going To Burst (Digital Giclee Print on paper)



185. Annette Fernando - Care Digital Giclee (Print on paper)



186. Heath Kane - Every Generation Takes More And Leaves Less For The Next (Silkscreen and Acrylic on paper)



187. Patsy McArthur - Raver Study (Ink on paper)



188. Patsy McArthur - Electric Ballroom Study (Ink on paper)



189. Alan Coulson - Eye Study/Gold (Acrylic on paper)



190. Donna Mclean - Low Drifter (Oil on card)



191. Zebedee Helm - Southern Water (Watercolour, ink and gouache on paper)



192. Zebedee Helm - Bridge Collapsing Under Weight Of Love Padlocks Onto Unsuspecting Paddle Boarder (Watercolour, ink and gouache on paper)



193. Zebedee Helm - My Favourite Statistic (Ink and gouache on paper)



194. Zebedee Helm - The Disdainful Slider (Watercolour, ink and gouache on paper)



195. Sean Worrall - Eastbourne Skyline No. 1 (Acrylic on paper)



196. Sean Worrall - Eastbourne Skyline No. 2 (Acrylic on paper)



197. Sean Worrall - Eastbourne Skyline No. 3 (Acrylic on paper)



198. James Springall - Eastbourne (Collage on found postcard)



199. John Hainsworth - Sienna Hills (Acrylic on paper)



200. John Hainsworth - Phthalo Hills (Acrylic on paper)



201. John Hainsworth - Happy Little Trees (Acrylic on paper)



202. Richard Davidson - Brown Paper Bags (Oil on paper)



203. Richard Davidson - Nightdress (Oil on paper)



204. Richard Davidson - Flora's Dress (Oil on paper)



205. Richard Davidson - The Team
(Oil on paper)



206. Winston Branch - Far Away
Eyes (Acrylic on card)



207. Winston Branch - Your Sweet
Touch (Acrylic on card)



208. Winston Branch - Mint in
Sweet July (Acrylic on card)



209. Winston Branch - Beyond The
Blue Sky (Acrylic on card)



210. Habib Hajallie - You Can't
Touch my Hair Sue, Sorry (Fineliner
pen on paper)



211. Andrew Torr - Nocturne -
Common I (Watercolour and gold
leaf on 320 gsm Indian cotton rag)



212. Andrew Torr - Nocturne -
Common II (Watercolour and gold
leaf on 320 gsm Indian cotton rag)



213. Andrew Torr - Nocturne -
Common III (Watercolour and gold
leaf on 320 gsm Indian cotton rag)



214. Andrew Torr - Nocturne -
Common IV (Watercolour and silver
leaf on 320 gsm Indian cotton rag)



215. Carys Evans - The Blackbird
(Mixed media on paper)



216. Carys Evans - Two Red Pears
(Mixed media on paper)



217. Ruth Philo - Together: Pink
(Acrylic and graphite on paper)



218. Ruth Philo - Together: Orange
(Acrylic and graphite on paper)



219. Catriona Millar - Miss Harriet
(Oil on canvas board)



220. Catriona Millar - Horatio (Oil
on canvas board)



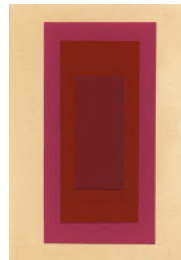
221. Catriona Millar - Sally (Oil on
canvas board)



222. Catriona Millar - Alfie (Oil on
canvas board)



223. Nici Bungey - Stark and Still
(Acrylic on paper)



224. Nici Bungey - Echoes (Acrylic
on paper)



225. Fipsi Seilern / Pang - All
Perdon !? (Chinese ink, spray paint
and pencil on paper)



226. Fipsi Seilern / Pang - Chaos
Ensues (Chinese ink, spray paint
and pencil on paper)



227. Fipsi Seilern / Pang - Then
They Had Gone (Chinese ink, spray
paint, highlighter, pencil on paper)



228. Fipsi Seilern / Pang - Unless
What? (Chinese ink, spray paint
and pencil on paper)



229. Paula MacArthur - First Among Them (Oil on paper)



230. Paula MacArthur - Incomprehensible Treasure (Oil on paper)



231. Adam Bridgland - The After Party (Digital Print and Crayon)



232. Anne-Marie Butlin - Nasturtiums (Watercolour on paper)



233. Anne-Marie Butlin - Chicory Flowers (Watercolour on paper)



234. Anne-Marie Butlin - Sweet Peas (Watercolour on paper)



235. Lynn Hanford-Day - Starburst (Watercolour and Australian 'serenity' crystal on paper)



236. Lynn Hanford-Day - Cosmic Flower (Watercolour, white gold leaf and Australian 'serenity' crystal on paper)



237. Lynn Hanford-Day - Alchemy of the Planets (Handmade watercolour from minerals and earths, white gold leaf, 24 carat gold leaf and gold watercolour on paper)



238. Lynn Hanford-Day - Jupiter's Vortex (Watercolour, white gold leaf and 24 carat gold leaf on paper)



239. Deborah MacMillan - Greek Boat (Watercolour on paper)



240. Nessie Ramm - Miniature Road Closed (Oil on Aluminium)



241. Nessie Ramm - Mini Diversion
(Drawing on Aluminium)



242. Matt Dosa - Squeak (Acrylic and Spray Paint on paper)



243. Matt Dosa - Fast Lane (Acrylic on paper)



244. Matt Dosa - The Edge (Acrylic on paper)



245. Matt Dosa - Llama Chair (Acrylic on paper)



246. Theo Gorst - Microsoft Employee of the Year (2001)
(Gouache and pen on wood)



247. Susie Hamilton - Ceremony/12
(Acrylic on paper)



248. Susie Hamilton - St. Pauls
(Acrylic on paper)



249. Susie Hamilton - Abbey
(Acrylic on paper)



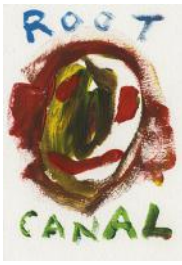
250. Susie Hamilton - Procession/5
(Acrylic on paper)



251. Charlotte MacMillan - In Aeternum (Mixed media on paper)



252. Jake Chapman - Untitledable
(Paint on paper)



253. Jake Chapman - Root Canal
(Paint on paper)



254. Jake Chapman - Extinction
(Paint on paper)



255. Jake Chapman - War, yes (Paint on paper)



256. Pam Glew - Sweet Peas In Brighton Gin (Far) (Graphite, Acrylic and Collage on paper)



257. Pam Glew - Sweet Peas In Brighton Gin (Close) (Graphite, Acrylic and Collage on paper)



258. Andy Ellis - Ghost Girl (Mixed media on paper)



259. Andy Ellis - Yellow Bird (Mixed media on paper)



260. Andy Ellis - Stage Fright (Mixed media on paper)



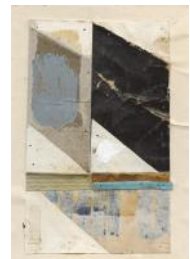
261. Andy Ellis - Lear (Mixed media on paper)



262. Jenny Pery - Tiger (Woodcut on paper)



263. J.F.K. Turner - Untitled (1)
(Collage (found materials) on paper)



264. J.F.K. Turner - Untitled (2)
(Collage (found materials) on paper)



265. Diego Palacios (Livson) - We Better Stay In (Oil on Postcard)



266. Henrik Simonsen - Red and Green Plants (Oil on card)



267. Henrik Simonsen - Green and Green Plants (Oil on card)

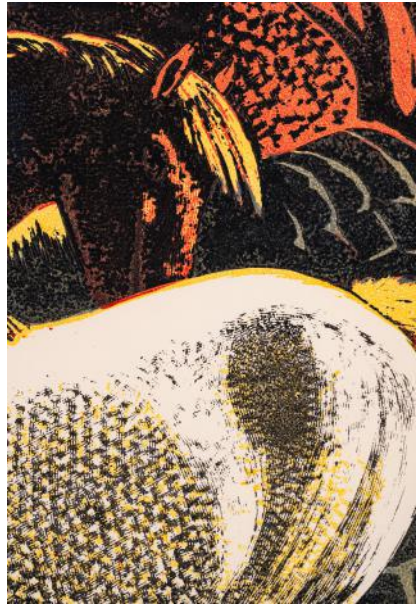


268. Henrik Simonsen - Gold and Grey Plants (Oil on card)

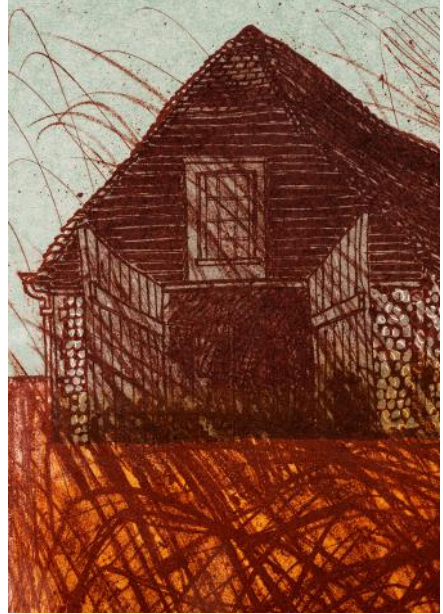
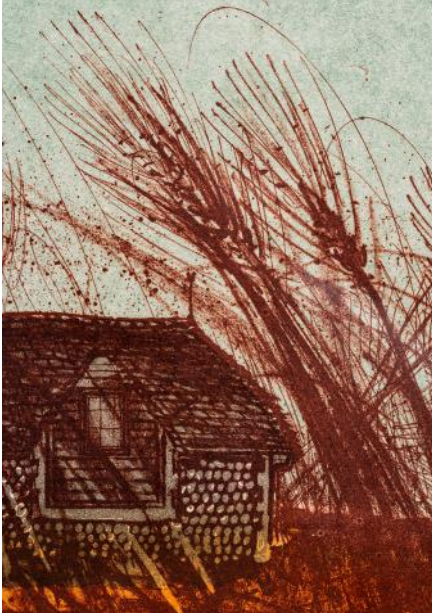


269. Angry Dan - Blue Whale (Acrylic on paper)

LARGER PAINTINGS & CERAMICS AUCTION



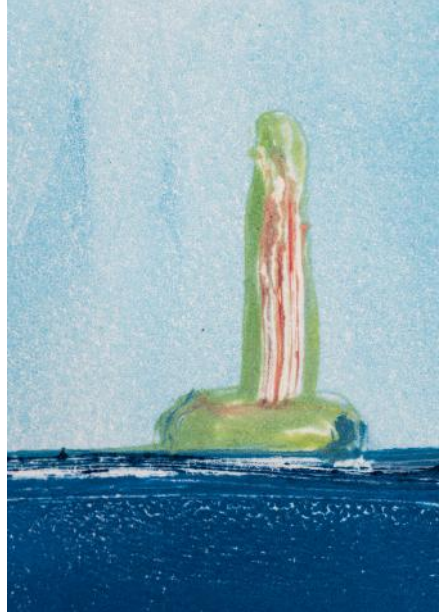
1. James T.A. Osborne (1907-1979) - Horses - Autumn (Linocut A/P), ca. 1964 -28cm x 38cm (image size without border); 50.3cm x 37.6cm (with border unframed); 45.4 (H) x 58.3 (W) x 2.2cm (D) (Framed)



2. Robert Tavener (1920-2004) - Tithe Barn and Grasses 24/75 (Lithograph), ca. 1970 - 40 cm x 55cm (image size without border); 50.3cm x 67.5cm (with border); 58.5 (H) x 76.6 (W) x 2.2cm (D) (Framed)



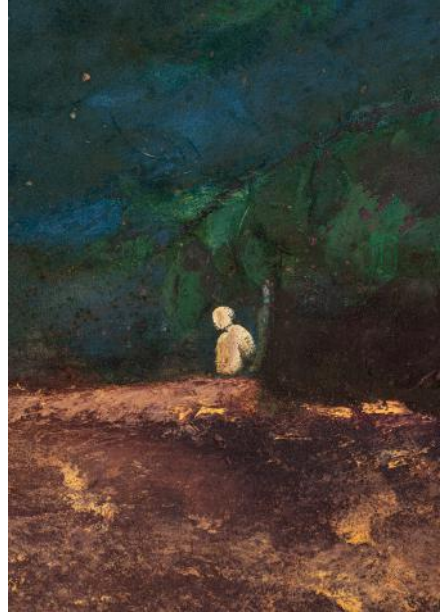
3. Fred Whitehead RCA (1936-2021) - Fishing Boats, 'Stade' Beach, Hastings (Oil on Canvas), 2012 - 45.5cm x 35.95cm (Unframed); 39.5 (H) x 49.2 (W) x 3.6cm (D) (Framed)



4. Jenny Pery - Gatteville Light (Monotype), 2022 - 52.6cm x 38.1cm (Unframed); 41 (H) x 55.6 (W) x 2.2cm (D) (Framed)



5. Jenny Pery - Stream (Monotype), 2022 - 56.3cm x 38.2cm (Unframed); 41.2 (H) x 59.4 (W) x 2.2cm (D) (Framed)



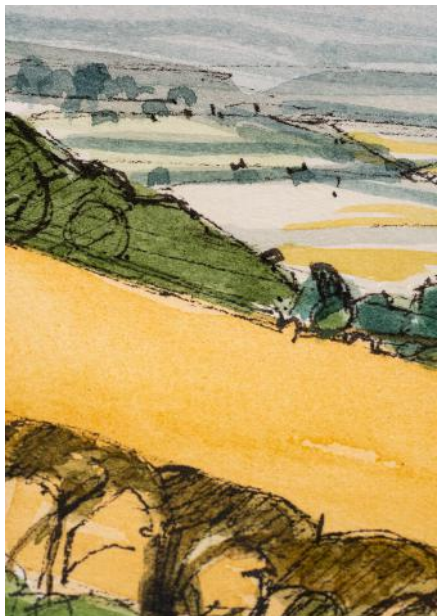
6. Harold Mockford (1932-2023) - Summer 2004 (Oil on Board),
2004 - 91cm x 91cm (Unframed)



7. Mick Rooney RA - Luna Dog Walking (Oil on Canvas), 2019 - 42.5cm x 29cm (Image size); 60.4cm x 46.9cm x 4.1cm (Framed)



8. Elfie Peppé (née Parry, 1905-1991) - First of October 3/30 (Woodcut) - 10.1 x 11.5cm (image size without border); 16.1cm x 19.4cm (with border unframed); 23.6 (H) x 20.3 (W) x 2.2cm (D) (Framed)



9. Mark Peppé (1934-2022) - Firle Tower (Watercolour), 1984 - 40cm x 30cm (image size); 45cm x 35cm (with mount); 38.2 (H) x 48.6 (W) x 2.2cm (D) (Framed)



Lot 10 - Robert E Wells - Mirror Mirror (Oil on Panel), 2022 - 15.2cm x 19.2cm (Canvas); 17.8cm x 21.8 cm (Base)



Lot 11 - Claire Partington - Momento Mori Jelly Mould (Glazed Ceramic), 2023 - 9cm (H) x 10cm (W) x 22cm (D); Includes a stand (pictured)



Lot 12 - Laima Laurina - Cupid Vase (Porcelain, Pigments, Glaze, Gold Lustre), 2023 - 23cm (H) x 15.5cm (W) x 5.5cm (D); 4.5cm (Width of vase opening); 22cm (height of vase cavity)



Lot 13 - Freyja Lee - Golden Snake and Flower (Ceramic with 9ct Gold Lustre), 2022 - Front: 29cm (H) x 35.5 (W); Base: 13.5 (H) x 20.5 (W); 8cm (Height when standing)

ART ON A POSTCARD

RAISING PROCEEDS FOR
ST WILFRID'S HOSPICE

Auction Dates:

14 September - 3 October

www.artonapostcard.com



Art on a Postcard raises money for the charity.
[@artonapostcard](https://twitter.com/artonapostcard) | www.artonapostcard.com | [#artonapostcard](https://twitter.com/artonapostcard)