

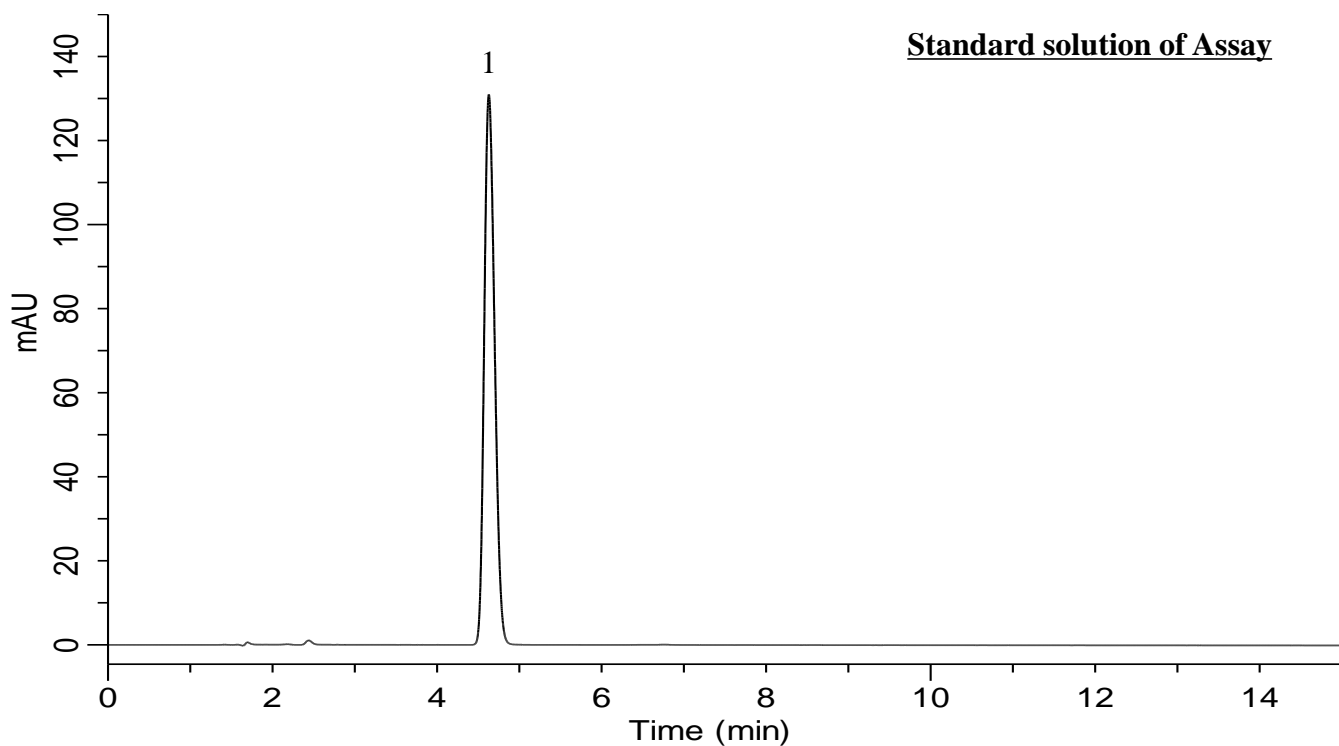
InertSearch™ for LC

Inertsil™ Applications

Analysis of Venlafaxine hydrochloride

(Under the Condition of USP41-NF36, Venlafaxine Hydrochloride)

Data No. LB619-0812



Standard solution of Assay

Conditions

Column : InertSustain C8 (5 μ m, 250 x 4.6 mm I.D.)
Column Cat. No. : 5020-16028
Eluent : CH₃CN/Buffer* = 30/70
Flow rate : 1.5 mL/min
Col. Temp. : 30 °C
Detection : UV 225 nm (UV7750 UV Detector)
Injection Vol. : 20 μ L
Sample : Standard

* 3.4 g of monobasic potassium phosphate in 700 mL of water.
Adjust with *Solution A*** to a pH of 3.0.

** Phosphoric acid and water (1:10)

Analyte:

1. Venlafaxine hydrochloride 0.04 mg/mL

Symmetry factor of (1) : 1.20(< 2.0)

RSD of the peak area of 1 (%) (n=6)

: 0.03(< 2.0)