



B U S I N E S S
E N V I R O N M E N T S

Law Office
LOOKBOOK

3424 Peachtree Rd NE
Suite 125
Atlanta, GA 30326



Law Office - Concept Images



[Furniture for the Modern Office | Enwork](#)

Law Office - Concept Images



[Furniture for the
Modern Office |
Enwork](#)

Law Office - Concept Images



[DARRAN Furniture | Desk, workstation, reception, conference, occasional, and seating solutions](#)



Law Office - Concept Images



Law Office - Concept Images



[Davis Furniture](#)



Law Office - Concept Images



[Kimball International](#)

Law Office - Concept Images



[OFS - Homepage](#)

Law Office - Concept Images





Passion is at the heart of our company and the work we do for our clients. We are continuously moving forward, innovating, and improving.

OUR CLIENTS



Cantor Colburn LLP



MENDENFREIMAN

FMG
LAW

Freeman
Mathis & Gary LLP



RAFI
LAW FIRM

H·P·B
HUFF POWELL BAILEY





Passion is at the heart of our company and the work we do for our clients. We are continuously moving forward, innovating, and improving.

OUR CLIENTS





For 25 years we've been helping companies create solutions for their corporate spaces. Our team of dedicated Account Managers, Interior Designers, Project Managers, and experts is uniquely qualified to help you meet your specialized project needs. Whether your projects encompass interior build-outs, multi-site program rollouts, interior design layouts, space planning, or complex relocations, you can feel confident that you have chosen a partner who understands your service needs. When you choose Business Environments as your partner, you can feel confident that your project or business needs will receive the full attention of the best talent and resources that the industry has to offer.

EXECUTIVE TEAM



MEET THE EXECUTIVE TEAM



CEO

Coleby Hettler



Beth Lawrence
Executive Vice President



Stefanie Stegall
Executive Vice President

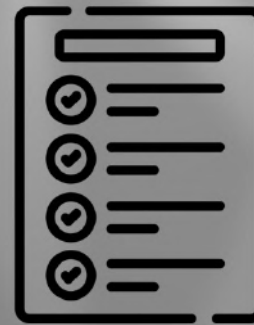
OUR SERVICES



Furniture



Interior Design



Client Project
Management

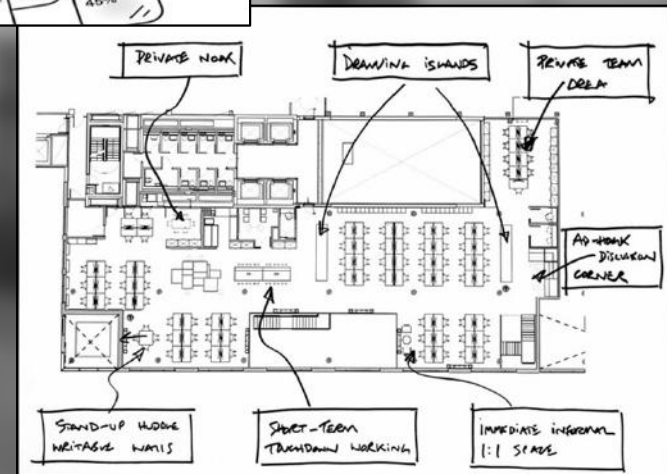


Installation

We strive for continual
improvement - drive change and
innovation and never stop
learning.



- Furniture Finish & Fabric Selections
- Furniture Specifications
- Furniture Design Services
- Budget Analysis
- Workplace Strategy Presentations





Interior Design

- Space Planning & Design
- Project Presentations
- Installation Drawings
- CAD/CAP/CET
- Furniture Finish & Fabric Selections
- Furniture Specifications
- Furniture Design Services
- Reconfiguration
- Asset Inventory Management





Client Project Management

- On Site Coordination
- Timeline Scheduling & Management
- Order Tracking & Acknowledgement
- Single Point of Contact on every Project
- Streamlined Communication
- Account Managers are also Interior Designers

PROJECT INITIATION & PLANNING

- Kickoff Meeting
- Milestone and Development and Count verification
- Budget & Schedule approval
- Project Design Presentation
- Showroom Tours

DESIGN QUOTING AND ORDER PLACEMENT

- Establish detailed furniture specifications alongside the design team
- Product take-offs generated with ACAD, CAP, CET
- Spec approval and quality control check
- Quote Creation and Approval
- Order Placement

DELIVERY PREP AND COORDINATION

- Attend project & construction meetings and coordinate with CM
- Oversee and provide regular updates on status, budget, and schedule
- Create a Delivery and Installation schedule
- Create Installation drawings

DELIVERY COMPLETION & INSTALLATION

- Field verify critical dimensions on site with clients
- Jobsite walkthrough prior to delivery and installation
- Protect jobsite oversight from receipt of furniture through installation
- Pre-punch to identify any issues up front
- Coordination on installation of low voltage and electrician vendors

PUNCH LIST AND PROJECT COMPLETION

- Formal punch list with Client/Designer
- Resolve all punch list items
- Coordinate product training and other on-site move-in support
- Create close-out forms for final sign-off and invoicing

ONGOING SERVICE POST INSTALLATION

- Post-occupancy and maintenance services, ongoing as needed
- Final Status Update & Project Closeout
- Any New Product Requests





Installation

DELIVERY PREP AND COORDINATION

- Create a Delivery and Installation schedule
- Create Installation drawings
- Installation walkthroughs
- Punch List Generation & Resolution

DELIVERY COMPLETION & INSTALLATION

- Field verify critical dimensions on site
- Jobsite walkthrough prior to delivery and installation
- Protect Jobsite and oversee, from receipt of furniture through installation
- Pre-punch to identify any issues up front

PARTNERED SERVICES

- We have built trusted industry partners over the last 20-plus years in which we can also deliver cost-effective solutions by coordinating your Low Voltage Cabling Installations along with Move & Relocation Services.

Low Voltage Cabling & Structured Cabling

- Category 5E, 6, and 6a Cabling, Fiber Optic Installation, Server Room Buildouts, and Data Center Buildouts

Audio Visual

- Systems Design, Video Conferencing Solutions, Monitor Mounting, Projector System Installation, A/V Cabling, and Conference Room Buildouts.

MOVE & RELOCATION SERVICES

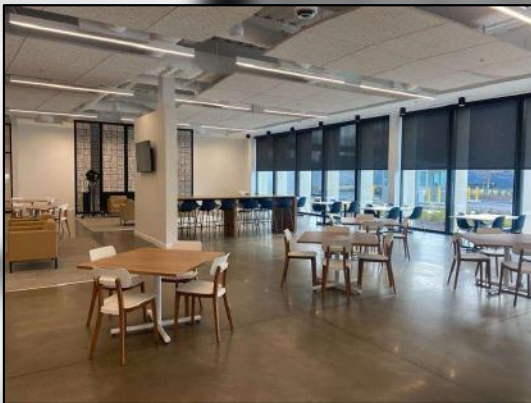
- Please inquire about moving services

- Office Configuration & Reconfigurations
- Product Inspection & Delivery
- Product Tracking & Receiving
- Punch & Resolution



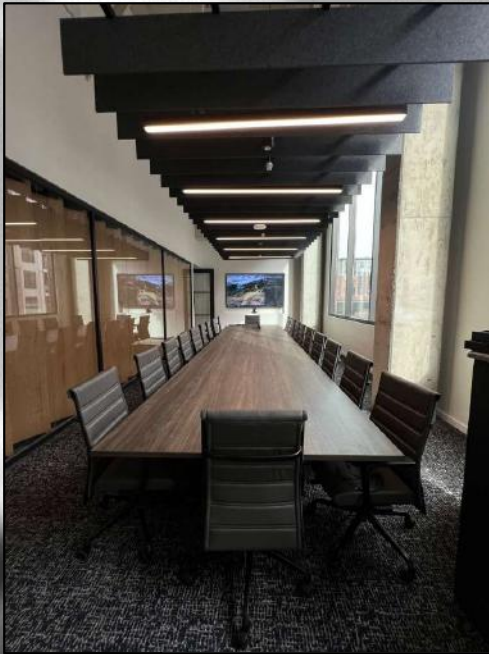
ASSEMBLY STUDIOS

PORTFOLIO



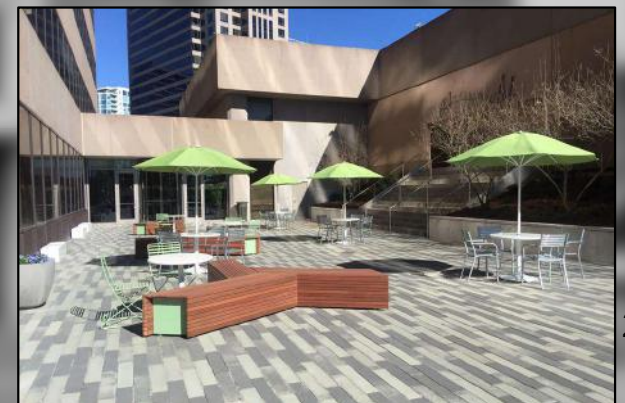
SOUTHWIRE

PORTFOLIO



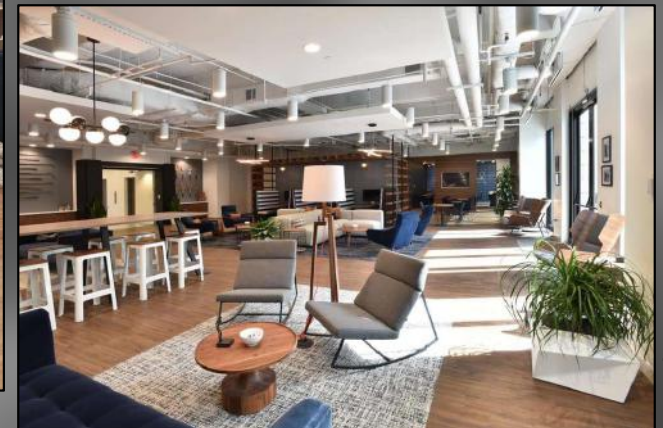
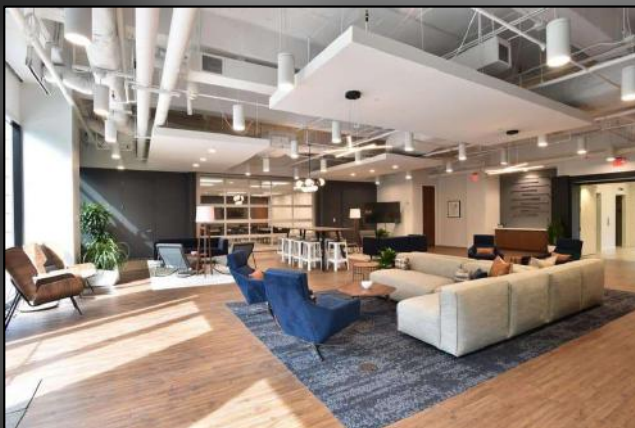
MONARCH PLAZA

PORTFOLIO



LENOX PARK

PORTFOLIO





Business Environments is WBENC (Women's Business Enterprise National Council) certified which is the most widely recognized and respected national certification for women-owned businesses in the U.S. Being respected as a national certified women-owned business we leverage our success to give back to the communities where we do business. We recognize that strength is gained from a diverse workforce, and we embrace our differences and remember that leadership is an honor and a responsibility. We are a diverse and inclusive company and serve diverse customers. We believe we are a better company when each of us feels included, valued, and able to trust colleagues who respect each of us for who we are and what we contribute to our collective success.

WOMEN OWNED





Business Environments
3424 Peachtree Rd NE
Suite # 125
Atlanta, GA 30326

Hours of Operation:
Monday - Friday
9 AM - 6 PM

Phone: 770-667-3338

Email: info@becusacorp.com.

CONTACT US



We are located in Monarch Tower on the first floor. Take GA 400 to the Lenox Blvd. exit, go East on Lenox Blvd., stay in the left lane and go up the ramp. At the end of the ramp take a right into the Monarch Tower parking deck. We are located in suite 125, next to New York Prime Restaurant.