

Electrostatic Lube Cleaner

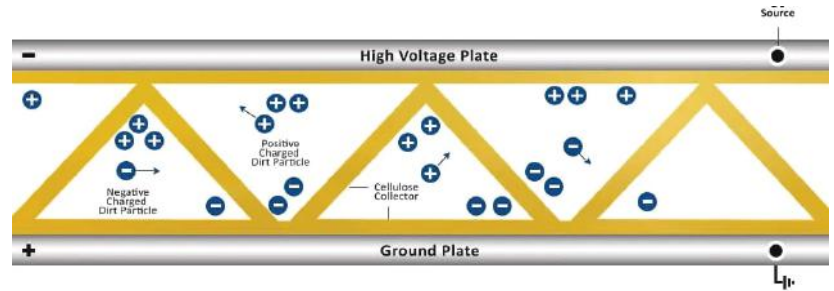
Contaminated blood disturbs body functions, Similarly, contaminated oil disturbs machine functions and degrades performance and efficiency. A human body can purify blood by itself, whereas a machine cannot. Therefore, it must always get a clean food supplement - which is Clean Oil.

Minimac Electrostatic Lube Cleaner is an elegant, modular, comparatively lightweight machine based on electrostatic oil cleaning principal reaches sub-micronic-level cleanliness to on electrostatic oil cleaning principle that achieves sub-micronic cleanliness levels. It reduces costs by 90 to 95 %. Increase in the life of seals, pumps, valves, etc.



ELC-20

Technology: Electrostatic Fluid Cleaning



ELC-50



ELC-100



ELC-25

[Watch Video](#)

[Product Details](#)

[Read Article](#)



Minimac Systems Pvt. Ltd.
GST No: 27AAICM4730E1ZL

☎ 1800 1209 003 ✉ enquiry@minimac.in
🌐 www.minimacsystems.com

Gat No 448/15, Success Industrial Park Nighoje, Khed, Chakan, Pune, Maharashtra 410501

Why Oil Purification Important

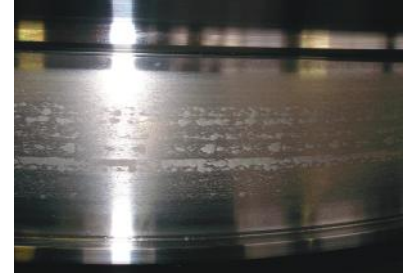
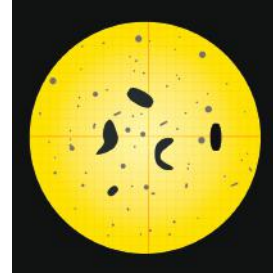
Metallic wear particles (of < 1 micron size) are generated by a lubrication of the system itself during its operation. Metallic wear particles are highly abrasive. An increase in wear particles is highly damaging to machine components. Wear particles typically cause 50% of all failures.

Electrostatic field is generated using a high frequency pulse width modulation device which pushes up the reliability factor manifold. **First in the world.**

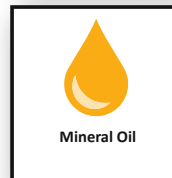
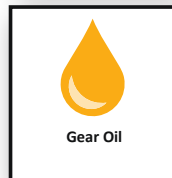
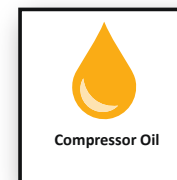
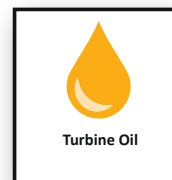
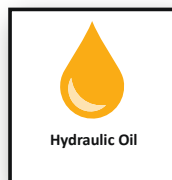
The most harmful particles are trapped in the dynamic tolerance, like bearings.

Another critical issue is the presence of free, emulsified, and dissolved water in the lube oils, which is detrimental to the overall performance of the lubricating system. This causes Oil oxidation and breakdown, Sludge formation, Seal Deterioration and leakages, Metal etching through Corrosion, etc.

You can get rid of many problems, Reduce your downtime with an electrostatic Lube oil cleaner, and oil can be used for a longer period rather than indefinitely.



Types of fluid which can be cleaned



Nomenclature - Model No. ELC

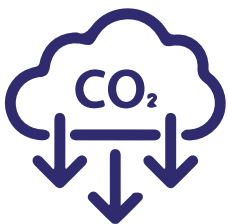
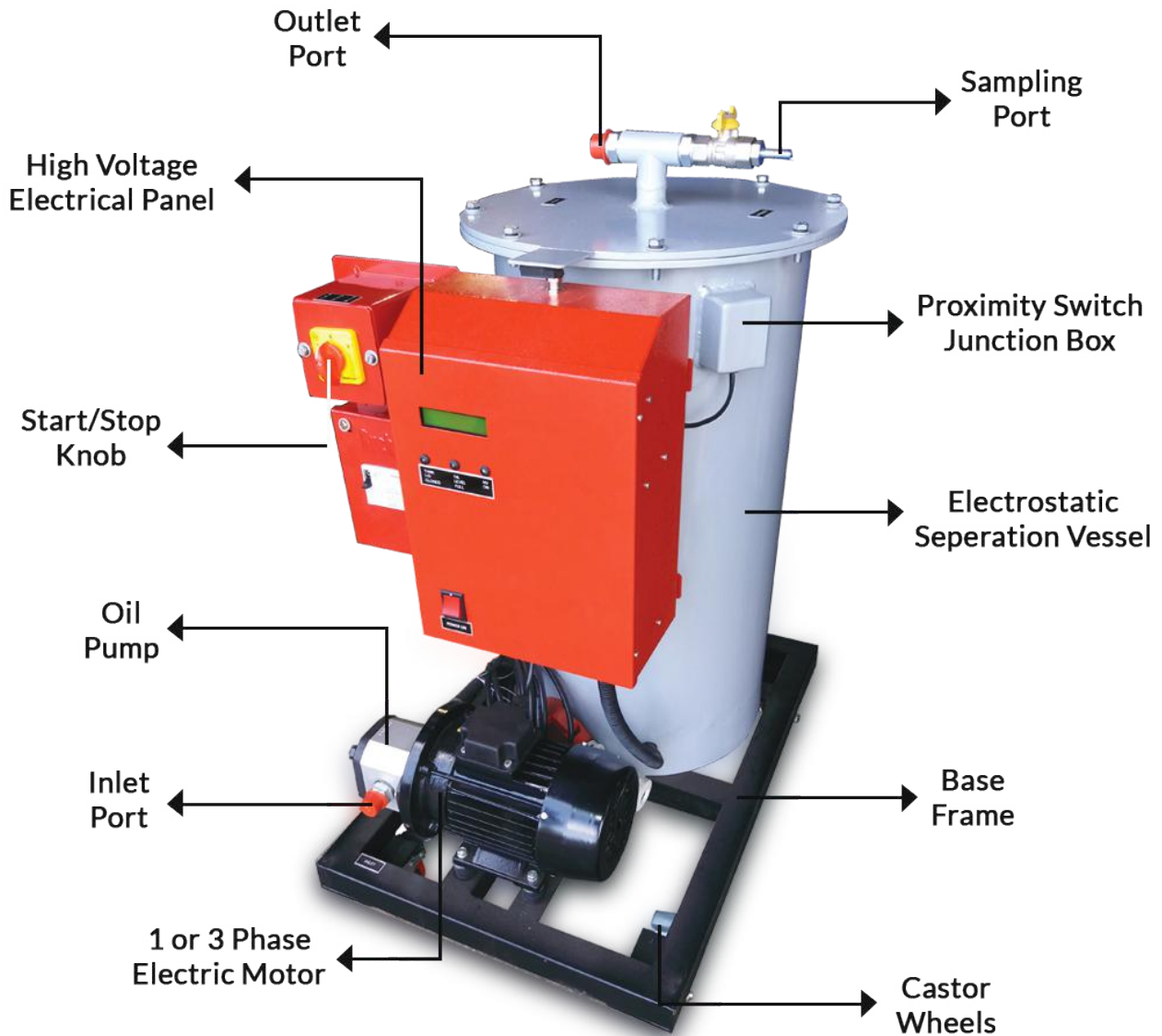
T1

T1	Pump Flow Rate (LPM)	Tank Capacity (Litres)
10 LPM	2 - 5 LPM	10
25 LPM	5 - 10 LPM	25
50 LPM	10 - 15 LPM	50
100 LPM	15 - 20 LPM	100
200 LPM	30 - 40 LPM	100 Litres x 2 Nos.

For customizations please contact Minimac® Sales Representative.

All specifications and configurations are indicative and should be verified with Minimac® Sales Office prior to ordering

Features



REDUCE YOUR CARBON FOOTPRINT

Specifications

Operational Principle	Foreign particles carry some charge. While we create positive and negative electrodes on the oil bath, the foreign particles which are negatively charged would be attracted towards the positive charged electrode and vice-versa. Thereby, after some interval of oil passage the particles would be attracted towards the respective oppositely charged electrode and a separation of particles happen
Benefits	
Machine Type	ElectroStatic Type
Body	Light Weight
Filtration Capacity	NAS 4-5
Moisture Allowable Limit	upto 1000 ppm
Viscosity	0-320 CST
Temperature Range Handle	up to 120 Degree C
Minimac ELC Frequency of Electrode	80,000 Cycle Per Second
Prevents oil oxidation	By removal of solid particles
Ensures Higher Oil Life	By retaining Viscosity, TBN, Flash Point, Additives level etc.
Oil Savings	Reduce Costs by 90 TO 95 % (Low power consumption)
Prevents Valve Failures	Due to removal of sticky sludge
Prevent Pump Failures	Due to removal of micronic particles
Increases bearing life	Due to sludge free oil
Operating Voltage	415 V, 3 phase, 50 Hz, AC Supply
Output Voltage	18 - 20 KV DC
Input Voltage	SMPS system (Highly Reliable)
Control Module	All the three interlocking conditions -Tank Lid Closed, Oil level full and HVDC ON. (Friendly control system)
Operating system	MODELESS- automatically adjusts the output kV according to mA load, without any high or low mode.
Maximum voltage on Electrode	20KV
Electrodes Material	High quality Aluminum for better conductivity and more efficiency
Motor	Super Efficient Motor which consumes only 35% power as compared to conventional Motor
In Filters	It can be provided in size of 0.01 microns. Customized filtration can be provided as per oil and conditions within range
Pump	Depends on ELC Model Selection
ELC Tank Capacity	As per flow rate
Tank Type	Circular
ELC Tank	MS Fabricated and pressure 3 bar
Electrodes	Aluminum Electrical Grade
Insulation Cup	Polyacetal/Delrin
Fabrication Structure	On fabricated base provided with 4 caster wheels
Accessories	
Float Switch	For sensing the oil level in the Electrostatic Tank
OLR	For over current sensing and tripping motor
Limit Switch	For sensing open / close condition of ELC top Lid
ELCB	For protection against earth leakage short circuit fault