

HikCentral Professional

Versatile Security in **One Platform**





What is HikCentral Professional

HikCentral Professional is Hikvision's security management software for integrating and managing security systems. It's designed to meet a variety of security challenges on a single platform.

With HikCentral Professional, you will manage multiple individual systems with ease, such as video security, access control, alarm detection, and more, explore cross-system functionalities, and optimize your day-to-day security and operation with lightweight solutions for a variety of scenarios. Daily operations become more efficient while protection of people and property improve all around. Users of all kinds are making smarter decisions.

Keep reading to see how HikCentral Professional can boost operations in your unique situation.

System Architecture

01

Light and efficient

HikCentral Professional's lightweight architecture features reduced consumption of system resources. It is capable of managing multiple systems of varying sizes with consistent efficiency.

03

Integrated and open

This amazing platform is compatible with virtually all Hikvision products and their abundance of applications, including deep-learning-based analytics and statistics. And the platform's open architecture permits easy integration with third-party systems and hardware.

02

Unified and flexible

The platform supports combining various application plug-ins under a unified, on-demand architecture for collaboration across business segments. What's more, new plug-ins can be continually developed to meet new business needs.

A variety of applications cover a broad range of business needs



Diverse business applications to choose from

All major security needs are covered through a variety of core-security modules, including video, access control, visitor, attendance, vehicle, mobile monitoring, alarm detection, intelligent analysis, digital signage, and maintenance. Whatever your situation, you will find what you need right here.

A unified security system that enhances management operations

All applications connect in an interactive way to build a truly unified architecture, enhancing your operational efficiency - for example, an intrusion alarm plus access control combine with video verification, or perhaps visitor access with pre-registration of vehicles, and much more.

Lightweight solutions for diverse scenarios

HikCentral Professional offers ready-to-go solutions for specific scenarios like stores, logistics parks, bus stations, etc., improving their daily security and operation with data insights and unified management.



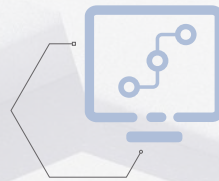
Key Benefits

Streamlines operations and management

With situational awareness powered by informative dashboards and interactive E-maps, optimal approaches advised by operation wizards, and the flexibility of a user-defined control panel, you will be making smarter decisions fluidly and efficiently on day one.



01



02

Simplifies deployment and maintenance

With minimum system requirements – Intel i3 CPU and 8 GB RAM – you'll have your own security platform deployed with limited hardware costs. Moreover, maintenance of the whole system is much easier with visualized health monitoring in real time.

Scales as business grows

By virtue of a flexible and scalable architecture, the platform can be scaled as your business needs evolve. You can expand it from a small 32-channel, 8-door system to an ultra-large-scale system that links up to 100,000 channels of equipment (under the RSM mode).



Promises security and reliability

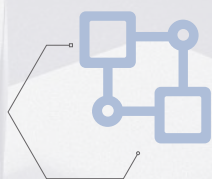
Get a new sense of security with advanced system protection with constant data encryption and privacy, along with comprehensive redundancy and disaster recovery mechanisms.



05



03



04

Facilitates hassle-free integration

Through an open architecture design and a series of highly adaptive OpenAPI interfaces, you will enjoy hassle-free integration with a wide range of third-party systems such as ARCs and payroll systems.



User-centric design ensures personalized and optimized experience



Personalized security management

Whatever your role – manager, decision maker, HR, receptionist, security, or maintenance staff – HikCentral Professional will help you get up and running quickly with pre-set modes. Alternatively, users can customize their own systems with the applications they need to create a personal control panel for specific duties and routines, empowering staff with custom, optimized management approaches.

Visualized systems, data, and maintenance

Data collected from various applications becomes easy to understand with HikCentral Professional's dynamic reports and helpful, intuitive dashboards. The dashboard supports creating a personalized display for the information you care about the most, contributing to smarter decision making with more situational awareness.



Interactive E-Maps

Interactive E-Maps give users an instant, dynamic view of multiple sites and the status of various devices all at the same time, as well as a shortcut to handle events and alarms directly onboard. It enables management and security staff to get accurate and timely notifications while responding to incidents promptly, enhancing day-to-day operational efficiency.

Light but powerful software simplifies installation and maintenance

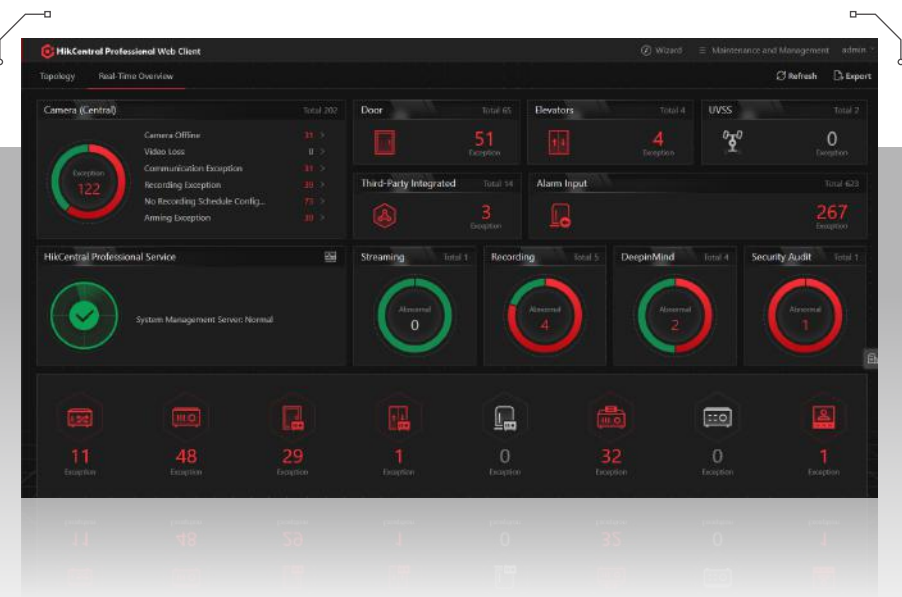


Easy installation

Minimum system requirements for HikCentral Professional is an i3 CPU and 8 GB of RAM.

Easy maintenance

System health status is displayed visually in real time, contributing to faster notifications and locating of abnormal situations. What's more, all system historical records are conveniently trackable.

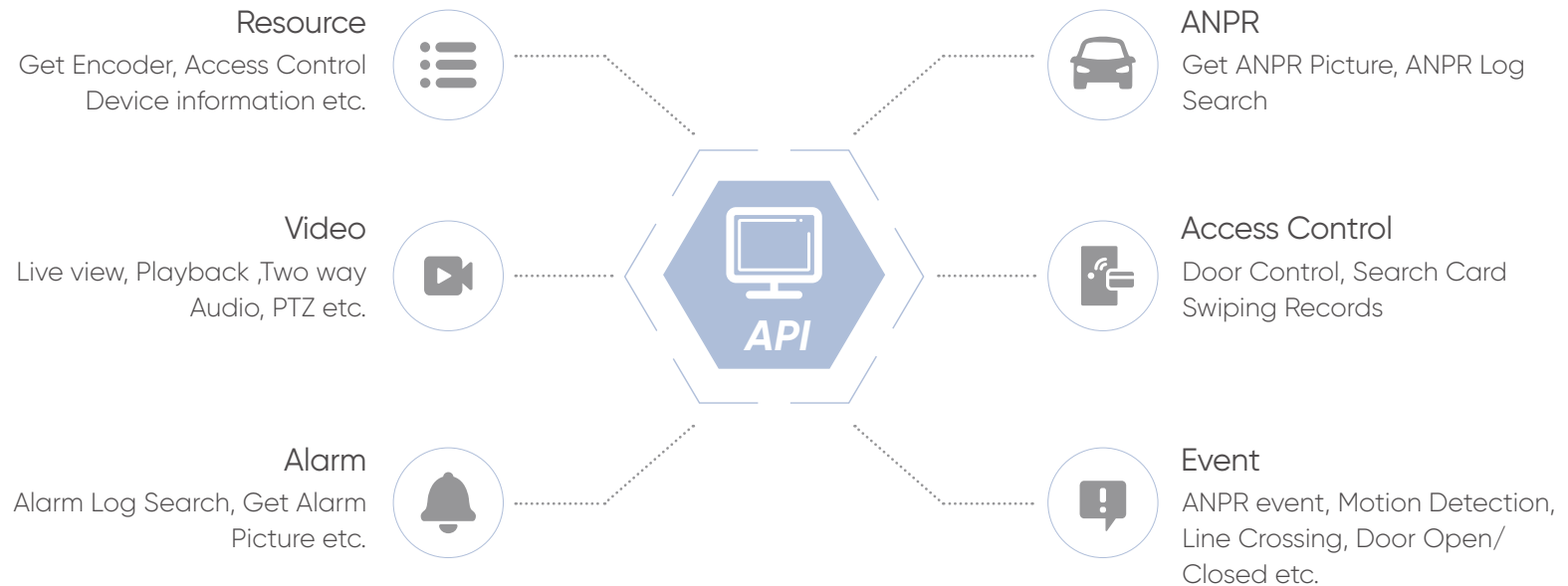




Open system architecture allows easy and convenient integration

Open API

Collaborative, goal-oriented development creates the most useful and customizable applications. Hikvision has created an open Software Development Kit for innovated systems to meet any particularized demand.



Video

Efficient and comprehensive video surveillance

Quickly save scenes and efficiently complete daily monitoring. Users can customize their own views to have a holographic perception of all video, maps and data. Specified views can be opened in one minute for quick preview and playback.

Low bandwidth network adaptability

Smooth Streaming automatically adjusts bitrate and resolution between clients and NVRs or IP cameras according to real-time network conditions.

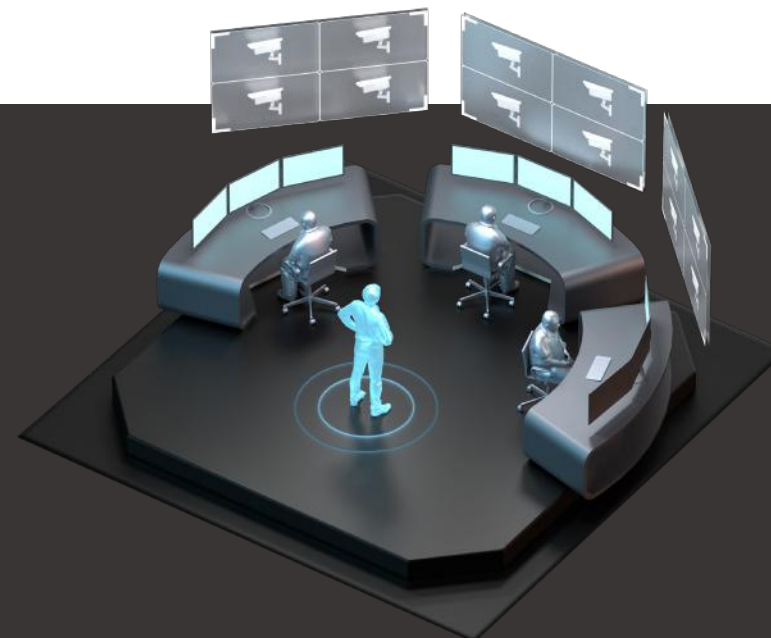
Quick and convenient search and playback

- Users will enjoy the quick incident search and location using thumbnails, supporting sub-stream, transcoded, and frame-extracting playback.
- Convenient event search is based on tags and VCA search analysis, as well as key attributes of vehicles and persons.
- A quick go-through of video based on event types reduces potential risks by locating high-frequency events in critical areas.

Flexible auto-patrolling

Users are able to set up scheduled capture plan based on actual scenarios or needs, and the captured pictures will be sent to users automatically.





Video export as evidence

- Supports merging several clips into one downloadable video file, making management workflow simpler and easier.
- File export is available in various formats including exe., avi., mp4, and more.

Reliable storage satisfies diversified needs



Flexible Storage

HikCentral Professional offers event-triggered video recording and playback, along with automated video backup during idle periods. Channel-based video and image storage can be configured as well.



Multiple Storage Media

Video and images can be stored on various media storage platforms, such as NVRs/DVRs, pStor, Hybrid SAN, and Cluster Storage Servers.



High Availability

HikCentral Professional features a fail-safe / high availability design with redundant remote & local backup and scheduled copy-back, along with pStor cluster services and NVR hot swapping.

AR live monitoring solution NEW

- Effectively monitor larger areas such as industrial parks and construction sites
- Easily locate monitoring spots in visualized scenarios
- 3D target tracking with support for zooming in for more detailed images
- Support for adding tags onto scenarios and linking separate cameras for comprehensive views
- Instant alarm display for quick event checking



Access control

Comprehensive and flexible access management

Users get flexible, customized, and comprehensive access control systems for their employees and visitors with diverse credentials including face, iris, fingerprint, card, QR code, PIN code, mobile credentials including Bluetooth and NFC, 512 authentications, and 5 access strategies to choose from, for hundreds of scenarios.

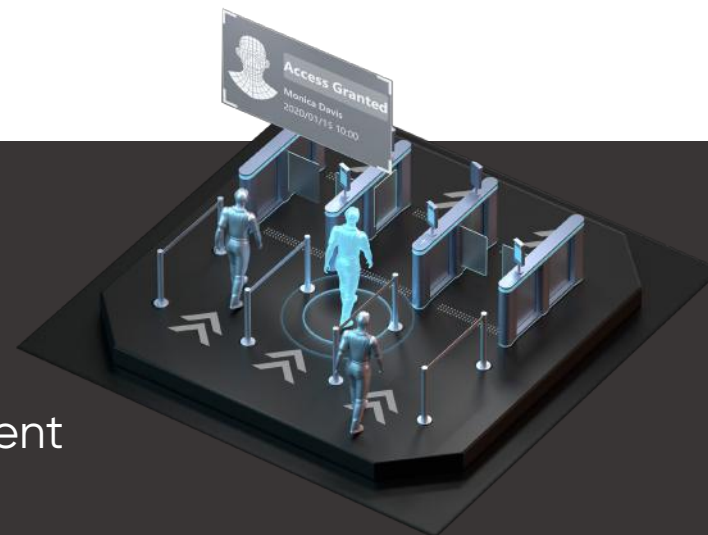


Easy and convenient personnel management

With HikCentral Professional, HRs and managers can easily assign various groups of people with different credentials with step-by-step guidance, manage employee on-board and demission procedures easily, and more.

To register, employees can use their smartphone to scan a QR code generated by HikCentral Professional and register their information remotely; they will receive access permission instantly.

What's more, with HikCentral Professional, it is easier than ever to enter employee information and design their badge with several unique styles and layouts to choose from. With a few clicks, users can enter their information and print employee badges with all necessary access permissions.



Quick alarm handling

When incidents occur, the access control system will trigger IP cameras to capture images and record video. Security staff can check the video in real time and take any necessary action.

Emergency mustering

Instant response to emergencies

When emergencies occur, HikCentral Professional can automatically or manually trigger to start the emergency state with just one click.

Enhanced evacuation

The system will trigger IP speakers for a cycled broadcast of evacuation messages and keep all doors open along the escape route, helping personnel quickly assemble at muster points.



Augmented security levels for everyone

At the muster points, the security staff can efficiently count and verify everyone's safety. If someone is missing, they can check the most recent locations where stranded personnel swiped ID cards.

▶ Time & attendance

Flexible rule setting

Users can schedule attendance rules for normal, man-hour, multiple, or temporary shifts based on specific scenarios for offices, factories, stores, and more, and support scheduling designated attendance points.

Various attendance reports

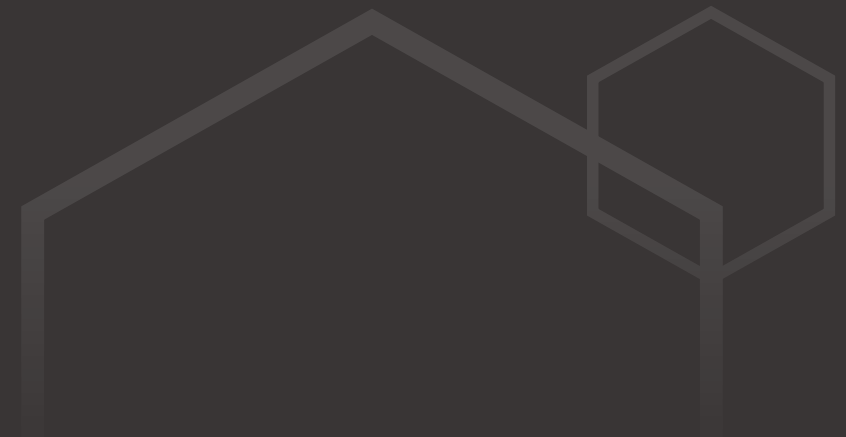
Diverse attendance reports and customizable templates are available. Users can also create personalized report templates based on their needs. Reports can be exported in Excel, PDF, and CSV formats, among others.

Easy integration with payroll systems

HikCentral integrates widely with third-party software systems such as salary calculation systems, meeting complex demands in a variety of businesses.

Employee self-service **NEW**

Employees can easily check their attendance results and send anomaly/corrective applications to HRs or managers. All these can be done conveniently on web & mobile app.



▶ Visitor

Improved visitor experience

- Quick visitor pass with ANPR vehicle number plate recognition, fast access using ID card or face recognition, registration via passport, and self-service checkout at designated places.
- A Watchlist function along with personalized design and printing of badges offer a unique experience for certain visitor groups, like VIPs.

Manage guest visits securely

Visitors are only allowed to enter areas where they are given access. Their visiting history is also traceable, adding to security levels.

Multi-tenant visitor management function

Companies inside the same building can manage its own visitors independently, protect the privacy of visitors, and reduce the management burden of the property management company.



▶ Video intercom

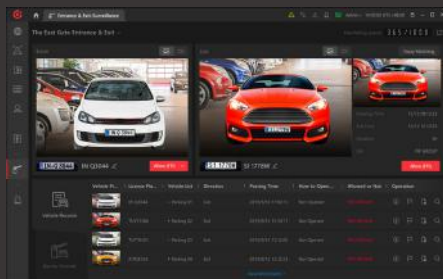
- Serves as a centralized platform to manage the video intercom system
- Supports configuring related devices and setting rules for device interaction
- Pushes calls from the indoor or outdoor station to the management staff
- Supports sending notifications to indoor stations in batches

Vehicle

Intelligent parking system

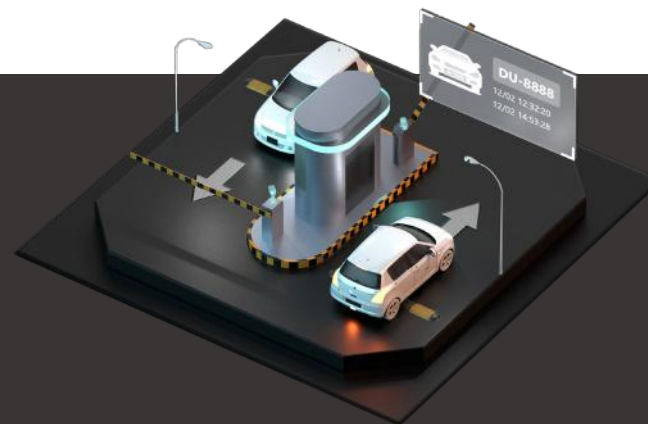
Vehicle entrance & exit management

HikCentral Professional supports both self-service card or ticket dispensers and Automatic Number Plate Recognition (ANPR) cameras to customize vehicle entry rules and check entrance & exit records.



Self-service parking query

Drivers can quickly find their cars using the self-service query of vehicle parking spaces via the plate number, to further enhance and improve their experience.



Parking fee calculation

HikCentral Professional supports flexible billing and scheduling for the varying needs of parking lots. This includes, for example, charging yearly, monthly or other scheduled time periods, or setting up unique billing rules for different types of drivers. Moreover, the platform supports charging fees by scanning the parking ticket barcode or QR code.

Parking Duration	Rate
Within 1 Hour (Initial)	80/Year
Over 1 Hour	10/Hour per Hour
Max. Fee per Day	800
Parking	800



Statistics and reports

HikCentral Professional enables intuitive and efficient parking operation analysis and transaction analysis reports, helping management staff analyze operations as well as income and expenses.



▶ On-board monitoring

Efficient On-board monitoring for quick response

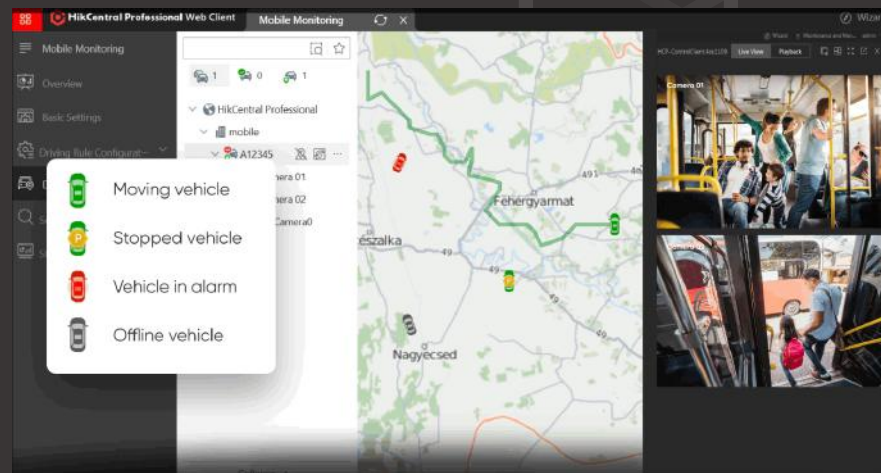
HikCentral Professional can serve as unified platform for mobile security management including real-time GPS positioning and tracking, abnormal driving behavior analysis, and more, and keeps users alerted of alarm notifications in a timely manner.

Flexible and convenient video management solution

Users get flexibility with viewing the live feed, store and play back video clips from the mobile video recorders on vehicles from the command center, upload event videos under mobile network, and back up videos using Wi-Fi.

Customized reports for enhanced operational efficiency

With a diversity of report templates to choose from, users can effectively gain insights on vehicle driving conditions like distance, time, and much more, helping them better schedule and optimize operations.

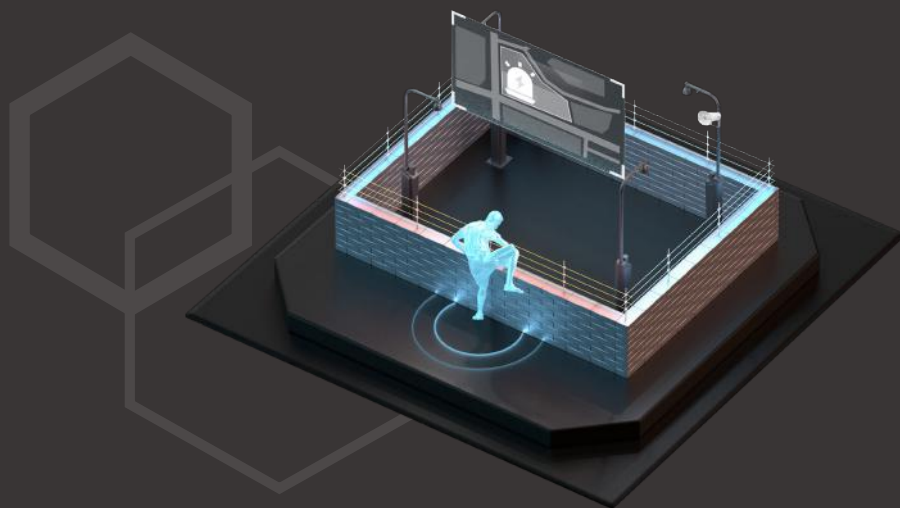


▶ Route management

Empowered by the fusion of AI and IoT technologies, this solution aims to help ensure transportation safety, reduce cost, and improve efficiency.

- **Help better plan routes and arrange schedules.** With visualized route monitoring panel, the operator can see the status of each site and contact driver in case of events
- **Reduce transportation costs** with details oil volume records to quickly locate oil leaks and prevent oil theft
- **Comprehensive driver performance evaluation**, based on on-time rate, fuel consumption, abnormal driving behavior analysis, etc.

▶ Alarm detection



Alarm sources

HikCentral Professional can centrally manage various alarm sources, such as video, access control, alarm panels, and third-party alarm inputs.

Alarm center

- Real-time display of all kinds of alarms
- Linked videos and locations will be displayed automatically when an alarm is selected

Alarm linkage

- Flexible linkage with access control devices, cameras, and more can be configured
- Supports automatic audio alarms to deter unlawful entry while linking with IP speakers
- Displays the status of alarm-triggering devices and quickly locates devices that have triggered alarms

Combined alarm



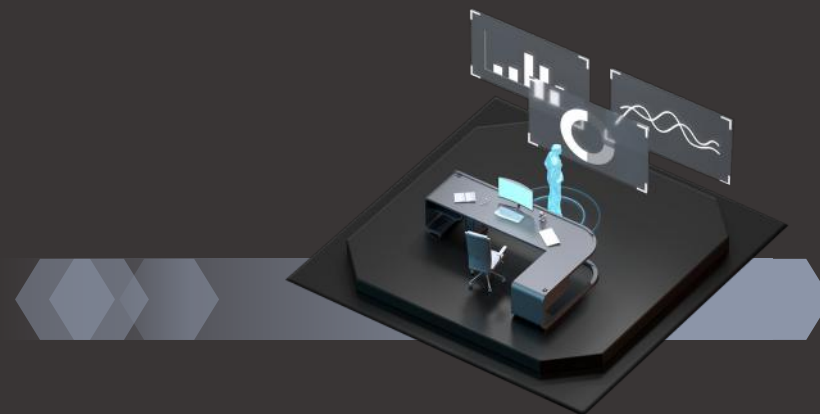
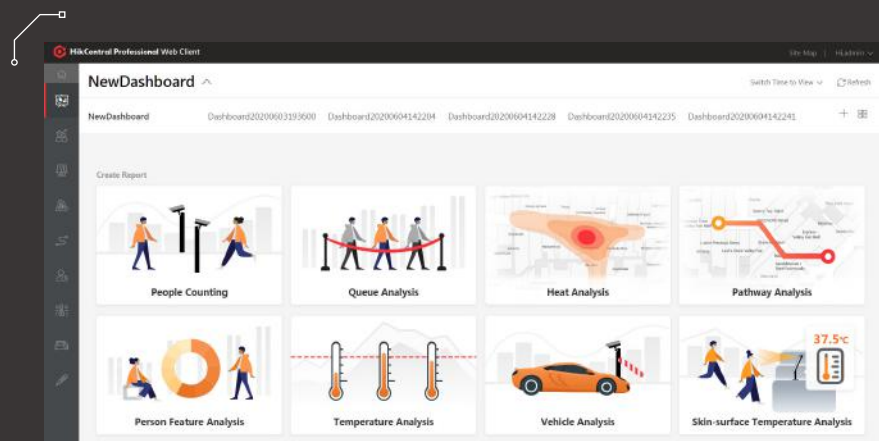
A combined alarm enables arming or disarming in order to promote flexibility and accuracy of alarm management. For example, users may employ composite I/O signals and motion detection events by installing infrared beams, effectively reducing the false alarm rate.

Alarm escalation



Alarm escalation takes place when the primary operator does not respond. An unprocessed alarm will be forwarded and escalated to upper level management when the original operator ignores.

➤ Intelligent analysis



Solutions for common scenarios

- The video-based intelligent analysis dashboard enables flexible and extensible digital applications
- Smart commercial analyses – like flow, attribute, wait-time, and visitor trend analyses – facilitate smarter decision making

➤ In-store BI

Professional retail solutions

- Professional & dedicated management of single or multiple stores with easy configuration and operation
- Support application configuration for each floor, with walk-in rate, people counting, queue analysis, heat analysis, pathway analysis and more to choose from
- Smart commercial analyses – help store manager better evaluate operation and gain insights with intuitive dashboards and diverse BI reports including single / multiple store reports, store comparison reports, promotion day report

Single / Multiple Store(s) Reports



Store comparison reports



Store promotional day report



➤ Digital signage

Flexible program design and release

- Eight types of pre-installed program templates are ready for use, saving you time and money upon installation
- All programs are created visually, making advertisement creation, temperature screening, flow control, attendance, and other functions easier and more efficient
- The OpenAPI invites easy integration with a third-party database for custom programs



➤ Guard patrol

Inefficient patrol schedule management and proxy patrolling can mean headaches for security managers. This solution aims to make guided patrols more convenient and efficient.

- **Easy & efficient patrol schedules and route design** on a visualized control panel
- **Convenient patrolling & real-time event upload via mobile app**, with all patrolling data automatically uploaded and saved on HikCentral Professional
- **Comprehensive patrolling performance evaluation** by regularly checking multi-dimensional patrolling reports
- **Ensuring patrolling regulations and reducing proxy patrol** with automatic alarms sent to the management staff

Factories



Logistics parks



Office buildings



HikCentral Professional

Versatile Security in One Platform

HIKVISION



Follow us on social media to get the latest product and solution information



HikvisionHQ



hikvisionhq



Hikvision_Global



HikvisionHQ



Hikvision



Hikvision Corporate Channel