

Smart | Accurate | Reliable

**DENTAL**  
**CAD CAM**



Reliable



# PAN INDIA PRESENCE

**1.5 Lakh+**  
Satisfied  
Customers

**150+**  
Skilled Service  
Engineers

**100+**  
PAN India  
Location

**500+**  
Products Under  
Service Care

**32**  
Year  
Legacy



## PAN INDIA Sales Support

98211-84441, 84483-98852

sales@unicorndenmart.com

## PAN INDIA Service Helpline

Register Your Complaint with

A Missed Call: **7065-558-558**

011-45551250, 51, 55

95994-48518, 97170-12081

care@unicorndenmart.com;

care1@unicorndenmart.com

## FOR WESTERN REGION: (Maharashtra & Gujarat)

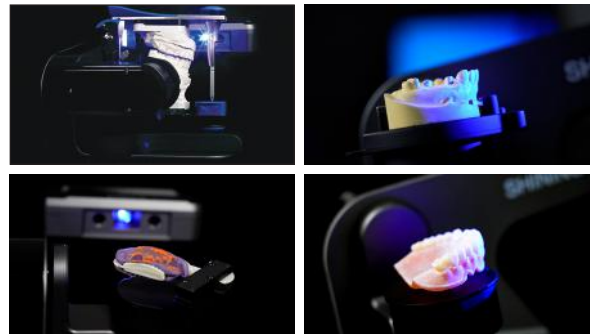
022-40108770, 71

\*The locations shown above are a combination of the offices of Unicorn DenMart and its distributors.

**AutoScan-DS-EX Pro (H)**

**Embrace The 5.0 MP Era**

AutoScan-DS-EX Pro(H), developed and manufactured by SHINING 3D, is a 3D dental scanner with powerful functions for multiple applications covering scans of impressions, plaster models, articulators, implant abutments, etc. Its high-resolution cameras, advanced algorithms, and user-friendly interface bring you with superior data quality with optimal experience.



**Advanced Desktop Scanner**



**Ultra-high Accuracy:** Scan accuracy  $\leq 8 \mu\text{m}$  assures reliable scan result, satisfying the requirement of various applications in dental industry completely. abutments, etc. Its high-resolution cameras, advanced algorithms, and user-friendly interface bring you with superior data quality with optimal experience.



**Unparalleled Details:**  
Equipped with dual 5.0 MP high resolution cameras, AutoScan-DS-EX Pro(H) can capture every detail of the components meticulously.



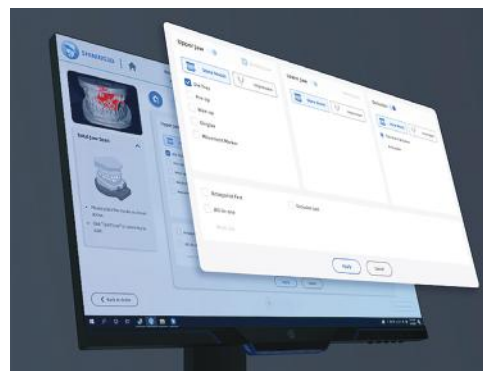
**Fast Speed:** Bite scan: 7s  
Upper/Lower jaw scan: 14s  
1~4 dies scan: 18s  
5~8 dies scan: 30s  
Impression scan: 66s

## AutoScan-DS-EX Pro (H)

**Flexible Workflow:** Set up your own workflow as you prefer, increasing work efficiency like never before, all-in-one and triple tray are available to get complete scan data with less steps.

**Backstage Data Processing:** Scan and backstage data processing can be carried out simultaneously, making the whole process more efficient.

**Versatile Scan Modes:** The new software associated with AutoScan-DS-EX Pro(H) can support versatile scan modes, including Multi Path Scan, High Quality Scan, AI Scan, Texture Scan, HDR Mode Scan, Reduce High Brightness Scan, etc.



Implant Abutment



Implant Bridge



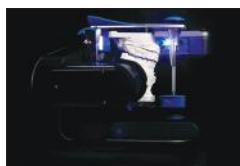
Scanbody



Texture



Model



Articulator



Full Denture



Impression



Post and Core

### AutoScan-DS-EX Pro (H) Specifications

Camera Resolution	2*5.0 MP
Accuracy	≤ 8 μm
Scan Time	Bite scan: 7s; Upper/Lower jaw scan: 14s; 1~4 dies scan: 18s; 5~8 dies scan: 30s; Impression scan: 66s
Articulator Scan	Support articulator transfer
Output Format	STL, PLY, OBJ
Light Source	Blue Light
Dimension	385*260*270 mm
Weight	5.0 Kg
Interface	USB 3.0
Power Supply	DC 24V

**AutoScan-DS-EX Pro (C)**

**Embrace The 2.4 MP Era**



**New Upgrades, More Distinguished**

<b>AutoScan-DS-EX Pro (C) Specifications</b>	
<b>Camera Resolution</b>	2.4 MP
<b>Scan Time</b>	8 s for bite scan; 12 s for upper / lower jaw scan; 13 s for 1-4 dies scan; 21 s for 5-8 dies scan; 58 s for impression scan
<b>Output Format</b>	STL / OBJ / PLY
<b>Light Source</b>	Blue light
<b>Dimensions</b>	260x270x420 mm
<b>Weight</b>	5 kg
<b>Interface</b>	USB 3.0
<b>Power Supply</b>	Dc24 V

**AutoScan-DS-EX Pro (C)**

**All-IN-ONE SCAN**

This new all-in-one scan method allows scan of quadrant models and dies at the same time, which largely simplifies the scan process and improve the scan efficiency by almost 50%

Conventional  
**4 Steps**



1 Bite



2. Upper



3. Lower



4. Die

All-in-one  
**2 Steps**



1 Bite



2. All-in-one

**EVEN FASTER SCAN SPEED**

With increased scan speed, a single jaw scan can be finished in 12 seconds. The entire process of a separate-die order can be completed within 2 minutes and a non-separated-die order within 2.5 minutes.



Bite  
8s



1-8 Dies  
13-21s



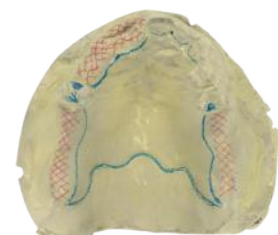
Single Jaw  
12s



Impression  
58s

**TEXTURE SCAN**

Clearly captures the textures and marks on the plaster model, assisting technicians to finish the digital partial framework design.



3shape 

UNICORN DenMart <sup>®</sup>  
Behind The Best Indian Dentists

# Stay up to speed with 3Shape Generation Red Lab Scanners

3Shape E2, E3 & E4 scanners have been upgraded to the same next generation scanning platform as E4 to deliver 20% more speed than before. Designed with a signature red ring, Generation Red E scanners provide optimized productivity.



**20%** faster

## Red Lab Scanners

### E2

Increases productivity and texture scanning



- ✦ 2 x 5 MP cameras, Blue LED Multiline
- ✦ Accuracy (ISO 12836 / implant): 10 µm/12 µm
- ✦ Scan speed (arch): 24 sec
- ✦ Scan speed (full arch impression): 72 sec
- ✦ Texture: B&W
- ✦ Scanning Strategy: Standard

### E3

High performance and implant bar accuracy



- ✦ 2 x 5 MP cameras, Blue LED Multiline
- ✦ Accuracy (ISO 12836/study model): 7 µm/10 µm
- ✦ Scan speed (arch): 18 sec
- ✦ Scan speed (full arch impression): 64 sec
- ✦ Texture: Color
- ✦ Scanning Strategy: Standard

### E4

Ultra-high speed and accuracy



- ✦ 4 x 5 MP cameras
- ✦ Accuracy (ISO 12836): 4 µm
- ✦ Scan speed (full arch): 9 sec
- ✦ Scan speed (full arch impression): 45 sec
- ✦ Texture: Color
- ✦ Scanning Strategy: Die-in-model

### F8

Fast forward to design

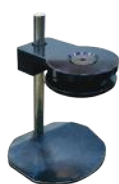


- ✦ 4 x 5 MP cameras
- ✦ Accuracy (ISO 12836): 4 µm
- ✦ Scan speed (full arch): 9 sec
- ✦ Scan speed (full arch impression): 45 sec
- ✦ Texture: Color
- ✦ Scanning Strategy: All-in-one / die in model

## Additional Accessories (Optional)



Multi Die Fixture



Two Cast Fixture



Impression Fixture



Wax Fixture



Occlusal Setup Tool

## Lab Scanner - Configurations

	Scanner	E2	E3	E4	F8
<b>Scanner features</b>	Camera	2x5MP	2x5MP	4x5MP	4x5MP
	Accuracy	10 µm	7 µm	4 µm	4 µm
	Scan Speed (Full Arch)	24 sec	18 sec	9 sec	9 sec
	Scan Speed (Full Arch Impression)	72 sec	64 sec	45 sec	45 sec
	Texture	B/W	Color	Color	Color
	Scanning strategy	Standard	Standard	Die in model	All-in-one / Die in Model
	Dual model scanning	X	X	X	✓
	Scanner connection	USB	USB	USB	Ethernet
	Auto-start	✓	✓	✓	✓
	Tilt-free scanning	X	X	X	✓
	Support additional indication tools	Yes	Yes*	Yes*	Yes + F8 Tools
Server client set-up	✓	✓	✓	✓	
<b>Software and apps</b>	ScanIt Dental scanner software	✓	✓	✓	✓
	Dental System (with option for cheaper scale-up)	Add-on	Add-on	Add-on	Add-on
	Studio Apps	Add-on	Add-on	Add-on	Add-on
	3Shape LMS (Essentials free / Premium paid)	✓	✓	✓	✓
<b>Service &amp; support</b>	Warranty with LabCare	5 Years	5 years	5 Years	5 years
	Express replacement	X	X	X	✓

\*No support for F8 specific tools

## Choose Your Design Software

### Complete Restorative

Get all indications from Premium & Removable Packages plus all available restorative add-ons to design abutments, implant bars, models and more at an attractive price.

### Crown & Bridge

Design full anatomies, bridges, copings, frameworks and wax-ups. Use CAD points to provide advanced indications.

### Scan Only

The easy way to go digital! Receive TRIOS cases or Scan gypsum models and send to an external design service.

### Premium

Design all indications from the Crown & Bridge package plus splints, digital temps, digital smile design, RealView, telescopes, post & core and more.

### Removable

For labs that specialize in providing full and partial dentures.

### Optional Add-Ons and CAD Points

Supplement your solution with add-on modules to offer abutments, implant bars and bridges, models, dentures and more or purchase CAD Points to use on case-by-case basis

## Dental System - Software Configurations

CAD Indications	Dental System™ Complete Restorative	Dental System™ Premium	Dental System™ Crown & Bridge	Dental System™ Removable
Copings & bridge frameworks	✓	✓	✓	✓
Anatomical copings & bridge framework	✓	✓	✓	
Full anatomical crowns & bridges	✓	✓	✓	✓
Gingiva on all indications	✓	✓	CAD Points / Upgrade	
Single wax up / Wax up bridge	✓	✓	✓	
Inlay / Onlay / Inlay bridge / Veneers	✓	✓	✓	Upgrade
Multi-layer crowns & bridges	✓	✓	CAD Points / Upgrade	Upgrade
Digital temporaries	✓	✓	CAD Points / Upgrade	Upgrade
Virtual diagnostic wax-ups	✓	✓	CAD Points / Upgrade	Upgrade
Post & core	✓	✓	CAD Points / Upgrade	Upgrade
Telescopes	✓	✓	CAD Points / Upgrade	Upgrade
Customized abutments & screw-retained crowns	✓	Add-on / CAD Points	Add-on / CAD Points	Add-on / CAD Points
Implant bars and bridges	✓	Add-on / CAD Points	Add-on / CAD Points	Add-on / CAD Points
Full dentures	✓	Add-on / CAD Points	Add-on / CAD Points	✓
Removable partial dentures	✓	Add-on / CAD Points	Add-on / CAD Points	✓
Customized impression trays	✓	✓	CAD Points / Upgrade	✓
Model Builder™	✓	Add-on / CAD Points	Add-on / CAD Points	Upgrade
Positioning Guides	✓	✓	CAD Points / Upgrade	Upgrade
Splints, night guards and protectors	✓	✓	CAD Points / Upgrade	Upgrade
Ortho system	Add-on	Add-on	Add-on	Add-on
Implant planning & surgical guides	Add-on	Add-on	Add-on	Add-on
<b>Advanced Tools</b>				
Smile composer™ including sculpt toolkit	✓	✓	✓	✓
Mirroring teeth	✓	✓	✓	✓
Simultaneous modeling on upper & lower	✓	✓	✓	✓
Dynamic virtual articulation	✓	✓	✓	✓
Attachments	✓	✓	✓	✓
Realview™ engine with 2D design guidelines	✓	✓	Upgrade	✓
Align and re-use design	✓	✓	✓	✓
CAD block placement	✓	✓	✓	✓
3Shape communicate™ (2GB storage included)	✓	✓	✓	✓
TRIOS® inbox & shade measurement	✓	✓	✓	✓
Basic / Expert mode	✓	✓	✓	✓
Advanced design validation tools	✓	✓	✓	✓
Manufacturing Inbox™	50 Connections	50 Connections	50 Connections	50 Connections
Full manufacturing equipment compatibility	✓	✓	✓	✓
3Shape LABcare™ included in subscription	✓	✓	✓	✓

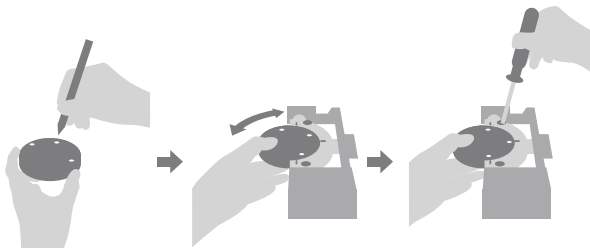
✓	Included in the specific Dental System™ Software version
Add-on / CAD Points	You can either use CAD points for each case or purchase of add-on module (sold separately)
Upgrade	Requires upgrade to Dental System™ Premium edition / Complete Restorative (Sold Separately)
CAD Points / Upgrade	You can either use CAD points for each case or upgrade to Dental System™ Premium edition (sold separately)
Not Available	Not available for this scanner model / software version

## DWX-52Di Plus

## Precision Performer and Efficiency Expert

### Introducing the New DWX 52Di Plus 5-Axis Dental Mill for Maximum Efficiency and Production

When designing this new model of the industry's best-selling series of dental mill. It was important to keep everything users love. Then make it even better, capable of producing a wide range of restorations, including crowns, copings, bridges, inlays and onlays, veneers, abutments, implant bars, screw-retained crowns, the DWX-52Di Plus 5-Axis dental mill offers a high reliable, precise, enhanced capabilities to make your lab more efficient and productive.



### New C-type Clamping System

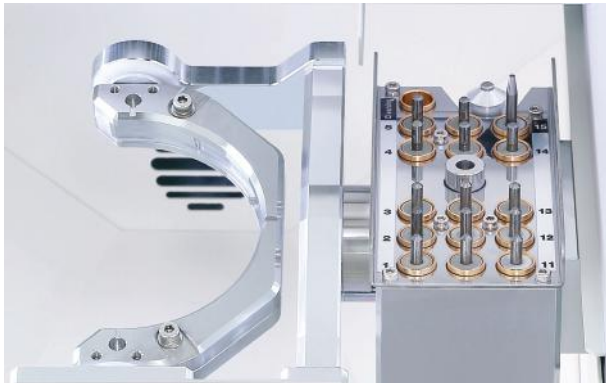
The new C-type clamp system for 98.5mm discs offers fast and secure set-up of Zirconia, Wax, PMMA, gypsum, PEEK, glass fiber-reinforced resin, composite resin and CoCr sinter metal materials. The new C-type clamp enables greater material utilization.



### More Comprehensive Solution

The DWX-52Di Plus 5-Axis dental mill can produce a wide range of restorations, including crowns, copings, bridges, inlays and onlays, veneers, abutments, implant bars, screw-retained crowns.

## DWX-52Di Plus

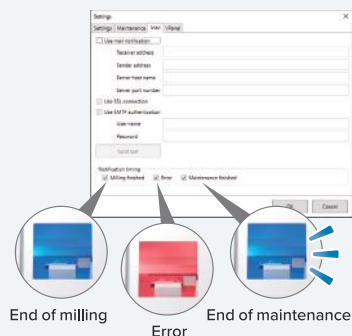


### 15-Station Automatic Tool Changer (ATC)

The DWX-52Di Plus provides continuous, unattended milling with a 15-station Automatic Tool Changer (ATC) and includes dedicated slot for an included cleaning tool. Now you can load the included cleaning tool into the ATC and set it up to automatically sweep away zirconia powder and other material dust for a cleaner milling surface.

### User-friendly Design

A user-friendly Virtual Machine Panel (Vpanel) enables convenient production and device monitoring from computer. Email notifications keep you informed of operational status, including milling and maintenance completion, or any errors in order to minimize down time.



### Precision 5-Axis Milling

The DWX-52Di Plus simultaneously rotates and tilts discs for deep undercuts and milling large arch applications and other full-mouth restorations with ease.

### Intelligent Tool Control

VPanel operation has upgraded to include the Intelligent Tool Control function that intuitively swaps out tools from their stocker position when they have reached their user-defined lifespan with a designated replacement tool without needing to pause production.

### Comprehensive Support Network

In addition to online or telephone assistance, DGSHAPE also offers educational seminars aimed at increasing customers' familiarity and confidence with products and services. Service engineers are also available worldwide to assist customers with any questions they may have.



## DWX-52Di Plus

Specifications	
<b>Millable Material</b>	Zirconia, Wax, PMMA, Composite Resin, PEEK, Gypsum, Glass-Fiber-Reinforced Resin
<b>Loadable workpiece shape</b>	Disc-type (with step) Step section: 98.5 mm (3.88 in.) (diameter), height 10 mm (0.39 in.) Body section: 95 mm (3.74 in.) (diameter), height max. 60 mm (2.36 in.)
<b>Operating speed</b>	XYZ axis: 6 to 1,800 mm/min. (0.24 to 70.9 in./min.)
<b>Spindle motor</b>	Brushless DC Motor
<b>Spindle rotating speed</b>	6,000 to 30,000 rpm
<b>Rotary axis travel angle</b>	A: $\pm 360^\circ$ , B: $\pm 30^\circ$
<b>Number of milling burs housed</b>	15
<b>Attachable milling bur</b>	Shank diameter: 4 mm (0.16 in.), Length: 40 to 55 mm (1.57 to 2.17 in.)
<b>Compatible compressed air</b>	0.02 to 0.2 Mpa
<b>Control command set</b>	RML-1, NC code
<b>Interface</b>	USB
<b>Power requirements</b>	AC 100 V to 240 V $\pm 10\%$ , 50/60 Hz (overvoltage category II, IEC60664-1), 2.0 A
<b>Power Consumption</b>	Approx. 200 W
<b>Operating noise</b>	During operating: 70 dB (A) or less (when not cutting), During standby: 45 dB (A) or less
<b>External dimensions</b>	Width x Depth x Height: 495 x 660 x 600 mm (19.5 x 26.0 x 23.6 in.)
<b>Weight</b>	67 kg (147.7 lbs.)
<b>Installation environment</b>	Indoor use, Altitude: Up to 2,000 m (6,562 ft.), Temperature: 5 to 40°C (41 to 104°F), Humidity: 35 to 80% (no condensation), Ambient pollution degree: 2 (as specified by IEC 60664-1), Short-term temporary overvoltage: 1,440 V, Long-term temporary overvoltage: 490V
<b>Included Items</b>	Power cord, USB cable, Manuals, DGSHAPE Software Package CD, Detection pin, Automatic correction jig, Material Adapter Rack, Pin-type material adapter, Hexagonal driver, Spanner (for clamp), Spanner (for spindle), Milling bur holders, Milling bur positioner, Cleaning tool, Option adapter ID labels, Dust collection hoses, Dust collection hose adapter, Regulator, Cleaning brush etc.

## DWX-52D Plus

### New Clamping System:

A new snap-on clamp system with 6 included adapters for 98.5mm discs offer fast and secure set-up of different materials.

### User-friendly Design:

A user-friendly Virtual Machine Panel (Vpanel) enables convenient production and device monitoring from your computer.

### Adaptor Rack for Increased Efficiency:

6 adapters for 98.5mm material discs are included as standard with the DWX- 52D Plus allowing you to queue up multiple milling jobs for efficient job management. An optional disc adapter rack is also available.



Specifications	
<b>Millable Material</b>	Zirconia, Wax, PMMA, Composite resin, PEEK, Gypsum, Glass fiber reinforced resin
<b>Spindle Rotating Speed</b>	6,000 to 30,000 rpm
<b>Rotary Axis Travel Angle</b>	A : $\pm 360^\circ$ , B: $\pm 30^\circ$
<b>Number Of Milling Burs Housed</b>	15
<b>Compatible Compressed Air</b>	0.02 to 0.2 Mpa
<b>Interface</b>	USB
<b>Power Consumption</b>	Approx. 200 W
<b>Weight</b>	67 KG (147.7 lbs.)

## DWX-43W

DGSHAPE's introducing the DWX-43W wet milling solution brings faster milling times for traditional ceramics and custom titanium abutments while reducing operating costs and increasing ROI.

- ✦ Faster Milling Times
- ✦ No More Costly Filters
- ✦ Reduced Routine Maintenance
- ✦ Expanded Milling Capabilities Built-In
- ✦ DGSHAPE CAM Software & Bonus Tooling Included

**Faster Milling Times:** New DGSHAPE CAM dedicated CAM software included with purchase decreases milling times by up to 20% while increasing milling efficiency and predictability. Use the "quick mill" option to select frequently used materials and start milling with ease and precision.

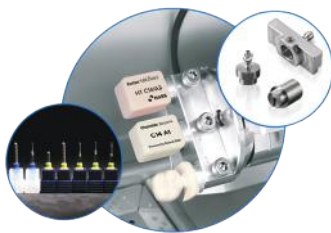


**Reduce the Cost of Use... "NO Filters Required!"**  
New Filter-Free technology eliminates the need for costly coolant tank filters, reducing the cost of use by 20%...Exclusive to the new DWX-43W.



### Increased Productivity Means Increased ROI!

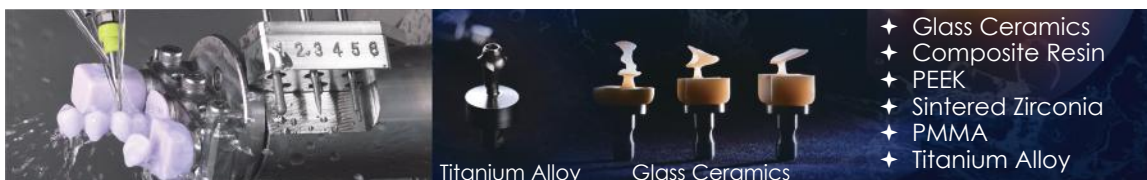
Milling downtime costs time and money for your dental business. The new DWX-43W's Coolant Optimization and Draining Cycle automatically rinses the milling chamber with coolant every 12 hours and minimizes overall user maintenance. That's maximizing ROI.



### Hot off the "Mill"... New DWX-43W comes with Perks!

- ✦ Added Value: Includes a total of 15 authentic DGSHAPE wet milling tools for greater ROI and get you up and milling.
- ✦ New internal material adapter and coolant tank tray designs are compatible with the AK-1 Material Adapters (AK-1-ME, AK-1-DE, AK-1-GE) for milling of Custom Titanium Abutments with pre-mill blanks from MEDENTiKA®, DESS®, and GeoMEDI®.
- ✦ Mill 6 units at a time with the 6-pin material adapter (#ZV-42W) accessory for expanded milling capabilities and productivity. - Now Included.

**Versatile Performer for In-House Production:** The DWX-43W mills a wide variety of materials, including sintered zirconia, glass ceramics, composite resins, hybrid-ceramics, and PMMA, consistently and accurately producing small-bridges, single crowns, screw-retained crowns, veneers, inlays, onlays, & copings.



Titanium Alloy

Glass Ceramics

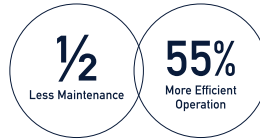
- ✦ Glass Ceramics
- ✦ Composite Resin
- ✦ PEEK
- ✦ Sintered Zirconia
- ✦ PMMA
- ✦ Titanium Alloy

## Automated Maintenance Features Save Time

Tank cover folds flat for easier access



Auto-rinse every 12 hours



Vpanel for DWX

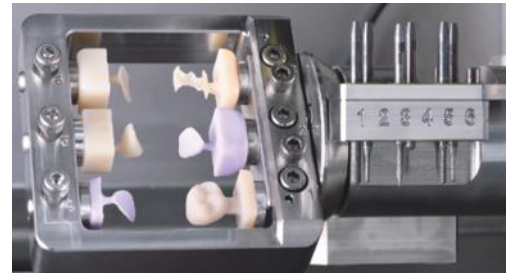


## Faster Milled Production

The included multi-pin clamp accessory saves you time, allowing you to add up to six units simultaneously and batch mill without compromising quality

**6** Mill up to applications simultaneously

## Stay Tuned-In to Tune-Up with DGSHAPE Insights



Specifications	
Compatible Materials	Traditional & Pre-Crystallized Lithium Disilicates, Glass Ceramics, PMMA, Hybrid Ceramics, Chairside Zirconia-Powered by Roland DGA, Composite Resins, and Pre-Mill Titanium Blanks
Spindle Speed	15,000 to 60,000 RPM
Rotary Axis Travel Angle	A Axis : $\pm 360^\circ$ ,
Air Requirements	<b>Pressure:</b> 0.2 Mpa or More   <b>Capacity:</b> 39 L/min or More
External Dimensions	19 in. x 22 in. x 23.6 in. (WDXH)
Weight	134.48 lbs (61 kg)
Abutment Material Adapter Compatibility	AK-1-ME (MEDENTIKA®), AK-1-DE (DESS®), and AK-1-GE (GeoMEDI®)
Automatic Tool Changer	Houses 6 Milling Tools
Additional Features	Filter-less Coolant Tank Technology, Enclosure System, and Automatic Draining Cycle
Accessories Included	DGSHAPE CAM Software, 6-Pin Material Adapter (#ZV-42W), ZGB2-125D (3), ZGB2-125DS (1), ZGB2-75D (1), ZGB2-50D (3), ZGB2-25D (1), ZGB-125D (3), and ZGB-50D (3)
Interface	USB / LAN Connectivity
Loadable Workpiece	<b>3 Standard Mandrel Material</b> CAD/CAM Blocks with Internal Adapter <b>6 Standard Mandrel Material</b> CAD/CAM Blocks with Included 6-Pin Adapter

# NeoMill

## Engineered for Speed, Precision & Stability

A Next-Gen Milling Solution for Efficient, Reliable, High-precision Workflows.

NeoMill is a high-performance 5-axis dental milling machine built for precise, reliable restorations. Supporting both dry and wet milling, it delivers speed, accuracy, and material versatility for modern dental labs and advanced clinics. With intelligent tool management, robust construction, and consistent output, NeoMill is ideal for crowns, bridges, and implant restorations.

### Compatible Materials:

Titanium

Pre-Milled

Glass Ceramics

Zirconia

PMMA

Wax

PEEK



5  
Axis

14 Tool Auto  
Changer

Dry & Wet  
Modes

Mill

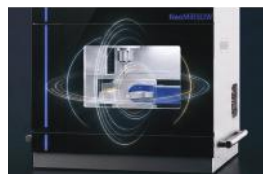
Up to  
60,000 RPM

### Technical Highlights

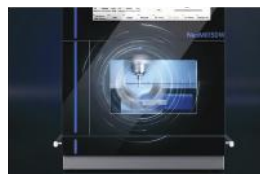
- ✦ High speed metal milling with powerful spindle
- ✦ Expanded 14 tools magazines for uninterrupted milling
- ✦ Milling of all important materials used in the dental field
- ✦ B-axis tilt angle up to 30°
- ✦ High frequency spindle with up to 60,000 rpm
- ✦ Integrated control PC with touch screen
- ✦ Servo motors on all axes
- ✦ Chip protection of the tool changer



Dual Mode  
Dry & Wet Milling



Simultaneous  
5-axis Milling



Powerful Spindle  
up to 60,000 RPM



14 -Tool Automatic Changer  
Reduced manual intervention

# NeoMill



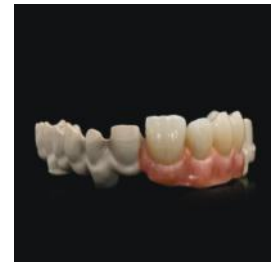
**PEEK**



**Glass Ceramics**



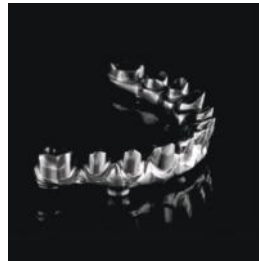
**Abutment**



**HPP**



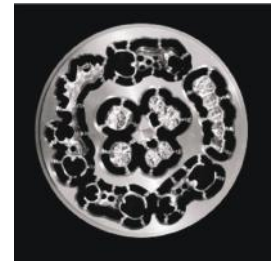
**Removable Denture**



**Implant Bridge**



**Implant Bar**



**Crowns**

## Strong Spindle Power

Equipped with powerful 1.8kw spindle power to ensure the milling precision and stability. (Option for upgrade to 2.5KW spindle)

Up to 60,000rpm rotating speed, capable of milling different kinds of materials for implant restorations, also for glass ceramic and premill abutment of the daily work for dental laboratories



## Precise and stable milling

JDM5DW dental titanium metal milling machine uses Meehanite cast iron for its main structure material, also with its one-piece body molding, no weldings are needed, which makes the milling machine much heavier but more stable in milling the titanium restorations,.

It can mill various restorations, such as implant bridge (All-on-4 and All-on-6 implant bridge) and implant bar, titanium crown, titanium premill abutment and different materials such as titanium, soft co-cr, glass ceramic, etc.

Technical Specification			
<b>Machine Type</b>	5-Axis Dental Milling Machine	<b>Net Weight</b>	233 kg
<b>Machine Power</b>	3.5 kW	Input Voltage	220V
<b>A Axis Milling Angle</b>	360°	Average Milling Time for Glass Ceramic	15-30 minutes
<b>B Axis Milling Angle</b>	+30° to -90°	Average Milling Time for Titanium Crown	15-20 minutes
<b>Machine Size</b>	642 × 642 × 722 mm (excluding foot cups)	Average Milling Time for Implant Bridge	90-180 minutes
<b>Spindle Speed</b>	60,000 RPM	Average Milling Time for Abutment	8-13 minutes

**DeskFab X1**

**All-in-one True Desktop**

True Desktop Metal 3D Printer



**CE**  
CE Safety  
Certificated

**FDA**  
FDA Laser Safety  
Registration  
Certification

**Certification Integrated, ultimate space**

- ✦ Dimension: 600×650×800 mm
- ✦ Floor area: 0.39 m<sup>2</sup>



**Maintenance-free for lifetime. Zero cost**

- ✦ Life time of filter is more than 30,000 hours. The cost is almost "0" compare with replaceable filter
- ✦ No operation of disassembly/installation avoid risks for explosion



**One-click typeset, one-click print, master the metal 3d printer without skills**

- ✦ One-click AI typesetting: FastLayer automatically complete dental crowns typesetting within 5 mins
- ✦ One-click print: FastFab one-click printing function



**Multi-functions, multi materials exchangeable**

- ✦ Modularize powder tank available to change CoCr Titanium etc



**Fool-proof construction design, easy installation**

- ✦ Four different color pipe design no mistake connection



**LFPT (Laser Following Powder Technology)**

- ✦ Fastform special designed LFPT increases printing efficiency more than 20%



Product Parameters	
<b>Product Model</b>	<b>DeskFab X1</b>
Printer Dimensions	600mm×650mm×800mm (L×D×H)
Machine Weight	140kg
Build Size	φ100×75mm
Laser Power	300W
Number of Lasers	Single
Power feeding Type	Top power feeding, one-way recoating
Recoater Type	Flexible Soft Blade
Baseplate Installation	Quick-release magnetic fixed
Filtration Lifetime	Permanent Filter ≥30,000 Hours
Printable Materials	Cobalt–chromium alloy, Titanium Alloy, Pure Titanium, etc.
Software	FastLayer Splicing Software & FastFab control Software
Power Output	1.2kW
Protective Gas	N2, Ar
Build Rate	100 crowns or 7 partial denture / 3 h

### Accessories



Nitrogen Generator



Vacuum Cleaner



Electric Shovel Tools



Drying Oven



Screening Machine/  
or Sieving Machine



Water Cooled Chiller



Voltage Stabilizer



Muffle Furnace



Air Compressor

## FF-M140C 3D SLM Printer 3D printing machine for dental metal additive manufacturer

### Quality advantage

- ✦ Stabilized optical system
- ✦ Self-developed software for one-button automatic typesetting, specially customized for dentistry.

### Efficiency advantage

- ✦ 150 crowns / 5 hours. 15 frameworks / 6 hours
- ✦ Permanent filter, high powder utilization rate.
- ✦ The crown veneer can complete typesetting and data processing in 5 minutes at the earliest.

### Security advantage

- ✦ > 5 years of verification, has formed an independent and perfect safety production process.
- ✦ Bring your own camera, support remote monitoring and operation, and monitor the production status anytime and anywhere.
- ✦ Integrated welding structure, strong stability and convenient installation.



## Accessories



Nitrogen Generator



Vacuum Cleaner



Sawing Machine



Drying Oven



Screening Machine/  
or Sieving Machine



Water Cooled Chiller



Voltage Stabilizer



Muffle Furnace



Air Compressor

### Product Parameters

Product Model	FastForm FF-M140C
Print volume	Dia 140mmx100mm
Spot size	50-80um
Scraper Type	Flexible scraper
Laser power	500W
Average power consumption	1.5KW
Minimum oxygen content	0.1%
Substrate fixing method	Quick installation substrate/screw fixation
Galvanometer scanning speed	0~10m/s
Typesetting method	fully automatic type setting and path planning
Whether to support continuous print after power failure	Yes
Printable materials	CoCr,TC4,Pure Ti
Dimension	1050x870x1750mm(LxDxH)
Powder layer thickness	0.02-0.15mm
Number of lasers	single laser
Power supply type	single phase 220v
Protective gas	nitrogen,argon
Cooling method	water cooling
Powder spreading method	Upper powder feeding
Dimensional accuracy	±0.05mm
The maximum amount of powder added at a time	2.5L
Whether to support automatic shutdown	Yes
Filter life	Permanent filter, service life not less than 30,000 hours

## SILENT Compact CAM Suction

A SILENT SUCTION COMPACT CAM from Renfert Germany specially designed for your cam functioning. It's an silent dust collector suction which collect waste powder from your milling machine specially zirconia. Its an compact bag free extraction unit specially for compact dental cam units.



### Advantages

- ✦ Bi-directional communication between extraction unit and CAM unit thanks to the PLC interface.
- ✦ Low operating noise of max. 55 dB(A).
- ✦ 3x longer service life in comparison to conventional collector motors (1000 operating hours guaranteed).
- ✦ No follow-up costs due to bag-free dust collection.
- ✦ Working without interruption due to uncomplicated motor change within minutes.



### Technical Specifications

<b>Permissible Mains Voltage / Frequency</b>	230–240 V, 50/60 Hz
<b>Nominal Voltage</b>	230 V
<b>Suction Turbine Power</b>	490 W (230 V)
<b>Volume Flow (Max.)</b>	2500 l/min (1.47 ft <sup>3</sup> /s)
<b>Filter Quality</b>	Class M According To EN 60335-2-69
<b>Cam Interface</b>	RJ 45 Socket
<b>PLC: Input Signal / Output Signal 2 x Turbine ON/OFF / 2 x Status Information Sound Pressure Level (LpA)</b>	At Max. Volume Flow 55 dB (A)
<b>Fill Level Dust Collector</b>	~ 2.6 l (0.69 gal)
<b>Weight (Empty)</b>	~ 13.2 kg (29.1 lbs)
<b>Dimensions (W x H x D)</b>	245 x 440 x 500 mm (9.6 x 17.3 x 19.7")



**With PLC Interface Cable  
for Better Performance  
of Suction Motor**

## SILENT powerCAM EC Suction

Extraction units for CAM systems

Powerful, bag-free extraction unit with automatic filter cleaning and EC motor technology for heavily used CAM units.

MADE IN  
GERMANY

### Advantages

- ✦ Bi-directional communication between extraction unit and CAM unit thanks to the PLC interface
- ✦ Low operating noise of max. 54.3 dB (A)
- ✦ Reliable production process through brushless EC motor technology (guaranteed runtime of 5000 operating hours)

### Details

- ✦ High volume flow of approx. 4000 l/min
- ✦ No follow-up costs due to bag-free dust collection
- ✦ Safe disposal of fine milling dust with the help of a disposal bag



Technical Specifications	
Permissible mains voltage	220–240 V   120 V   100 V
Permissible mains frequency	50/60 Hz
Power consumption	1610 VA (230 V)   1440 VA (120 V)   1250 VA (100 V)
Volume Flow (Max.)	3984 l/min // 2.34 ft³/s
Max. depression	257 hPa   262 hPa   255 hPa // 3.73 psi   3.8 psi   3.7 psi
Filter quality	Class M according to EN 60335-2-69
CAM interface	RJ 45 socket
Number of suction hoses	1
Sound pressure level (LpA) (at max. volume flow)	54.3 dB (A)
Weight (empty)	~18 kg // ~39.7 lbs
Dimensions (W x H x D)	270 x 535 x 540 mm // 10.6 x 21.1 x 21.2"
Ø suction fittings interior	42 mm // 1.65"
Fill level dust collector	~7 l // ~1.85 gal



Tool-free filter & motor change possible in a few minutes



With PLC Interface Cable for Better Performance of Suction Motor

## Sintering Furnace - TABEO-1/M/ZIRKON-100



### Product Features:

- ✦ High purity molybdenum-disilicide heating elements
- ✦ Maximum temperature 1650° C
- ✦ Service programs
- ✦ A - Temperature control\*
- ✦ B - Purge heating chamber
- ✦ C - Regenerate heating elements
- ✦ It can sinter 30 units simultaneously in 1 tray
- ✦ It can save upto 9 programs & No. of Programmable stages are 4

### Technical Specifications: TABEO/M/ZIRKON-100

<b>Working Temperature</b>	1650° C
<b>Heating Element</b>	High Purity Molybdenum-Disilicide Heating Elements
<b>Voltage Range / Frequency</b>	220-240V /50-60Hz
<b>Maximum Heating</b>	25 Degree Celcius/Min
<b>Display</b>	LED
<b>No. Of Elements</b>	4
<b>Thermocouple</b>	Pt-Rh-Pt, Type S
<b>Dimension</b>	400/400/600MM
<b>Gross Weight</b>	55kg

## F2- Fast Sintering Furnace



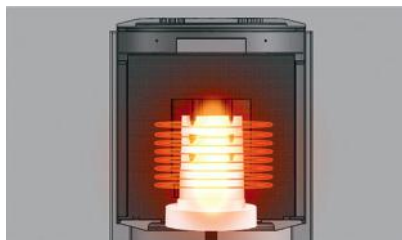
**Fast Cool 2.0 Technology, cools down the furnace quickly without damaging the unit**

Zotion Economic dental Fast Sintering Furnace F2 consist of a double shell structure with excellent insulation. The specially designed structure ensures that the furnace can achieve fast heating and cooling procedures, providing a cleaner working environment during sintering process. It can sinter zirconia block, glass ceramics and glazing.

Technical Parameters: F2 Fast Sintering Furnace	
Rated Voltage	Interflow 220 VAC + 20 %
Rated Power	2500W
Temperature Control Precision	+ 1°C
Size	420 * 320 * 600 mm
Net Weight	38.25 kg
Rated Temperature	maximum temperature 1650°C
Motor	Stepping
Max Heating Rate	100°C/minute
Sintering Chamber	100 * 200 mm, 3 layers sintering trays



**Full touch screen** for easier operations



**3 Sintering trays** can be put in the large sintering chamber



Maximum Heating Rate is **100°C per minute**



**Silicon-molybdenum** rods to generate heat



Excellent Temperature Accuracy: **+/- 1°C**



**Smaller & Lighter:** Zotion's Advanced Design

# Unicorn

## Zirconia Blanks



Unicorn DenMart proudly presents its in-house manufactured Unicorn Zirconia Blanks, specially developed to deliver exceptional strength, translucency, and shade accuracy for dental crowns, bridges, and restorations.

Designed to meet the evolving demands of modern dentistry, these blanks are highly compatible with open CAD/CAM milling systems, making them ideal for both labs and chairside workflows.



### Key Highlights

#### High Translucency (43%)

Mimics the natural appearance of enamel, ensuring lifelike restorations in both anterior and posterior zones.



#### Superior Strength (1300 MPa)

Engineered for long-term durability, making them suitable for full-contour crowns, bridges, and multi-unit prosthetics.

#### Shade Options – ST White & ST Shaded

Choose between ST White for custom coloring or ST Shaded for consistent color gradient results, reducing manual staining efforts.





### CAD/CAM Compatibility

Designed to fit seamlessly into open-system milling machines, enhancing workflow efficiency.

### Multiple Disc Sizes

- ✦ Available in 10mm to 25mm diameter options to suit various restoration requirements and material usage optimization.

### Affordable Yet Premium

- ✦ A cost-effective alternative to imported blanks without compromising on performance or clinical outcomes.



Product Parameters	
Parameter	Details
Material Type	Zirconium Dioxide (ZrO <sub>2</sub> )
Translucency	43%
Flexural Strength	1300 MPa
Available Shades	ST White / ST Shaded (Preshaded)
Applications	Crowns, Bridges, Full Contour Restorations
Disc Diameters	10mm, 12mm, 14mm, 16mm, 18mm, 20mm, 22mm, 25mm
CAD/CAM Compatibility	Open system
Brand	Unicorn Denmart
Country of Manufacture	India

# Compressor

## Special Dry Air Compressor for CAD CAM Solutions



**With Dry Membrane**



- ✦ **Reduced Moisture Content:** Delivers air with minimal moisture, essential for accurate bonding and material setting in dental procedures.
- ✦ **Enhanced Equipment Longevity:** Prevents moisture-induced corrosion, protecting sensitive CAD/CAM equipment like milling machines and scanners.
- ✦ **Improved Accuracy and Quality:** Ensures consistent material properties and accurate fitting of dental restorations by eliminating moisture-related warping.
- ✦ **Reduced Risk of Contamination:** Lowers the likelihood of bacterial growth by minimizing moisture, crucial for maintaining a sterile dental environment.
- ✦ **Better Patient Experience:** Reduces spray and splatter during procedures, enhancing comfort, and ensures high-quality restorations for patient satisfaction.
- ✦ **Increased Efficiency:** Minimizes equipment malfunctions and material distortions due to moisture, streamlining dental procedures and saving time.

Specification	1 HP	3 HP	4 HP	5 HP
Power (kw)	1kw/1HP	2.25kw/3HP	3kw/4HP	3.3kw
Max flow (L/min)	152	410	547	621
0.5MPa Airflow (L/min)	78	211	281	324
Noise dB(A)	≤68	≤70	≤71	≤75
Tank (L)	40	70	100	150
Package Dimension (mm)	450×450×730	1030×640×880	1210×710×920	1480×630×1000
Gross Weight (kg)	31.5	91	127	158
Dryer	-	In-built	In-built	In-built


**Dental Lab Starter & Advanced Packages**

**SHINING 3D**  
 DENTAL  
 AutoScan  
 DS-EX Pro (C)



**SHINING 3D**  
 DENTAL  
 AutoScan  
 DS-EX Pro (H)



**3shape**   
 E2  
 Lab Scanner



**DWX-52Di Plus**  
 Milling Machine  
 With "C" Clamp



**DWX-52D Plus**  
 Milling Machine  
 With "O" Clamp



**SILENT COMPACT CAM**  
 SUCTION



**1 HP COMPRESSOR**

**ZOTION**<sup>®</sup>  
 F2  
 Sintering  
 Furnace



**mihmvoigt**  
 TABEO  
 Sintering  
 Furnace






WHERE TRUST COMES FIRST



Warranty Ke Saath Bhi  
Warranty Ke Baad Bhi

For any Sales & Support

 9821184441, 8448398852

 sales@unicorndenmart.com

Customer Care

Register Your Complaint with A Missed Call: **7065-558-558**

 011-45551250, 51, 55  9717012081, 95994 48518

 care@unicorndenmart.com | care1@unicorndenmart.com

Connect With



Unicorn DenMart

\* Accessories shown may not be a part of standard equipment. Specifications are subject to change without notice.

Ver 5/2026



Corporate Office: 3 Local Shopping Centre, MOR Land, Near J Block DDA Market,  
New Rajender Nagar, New Delhi – 110060

