

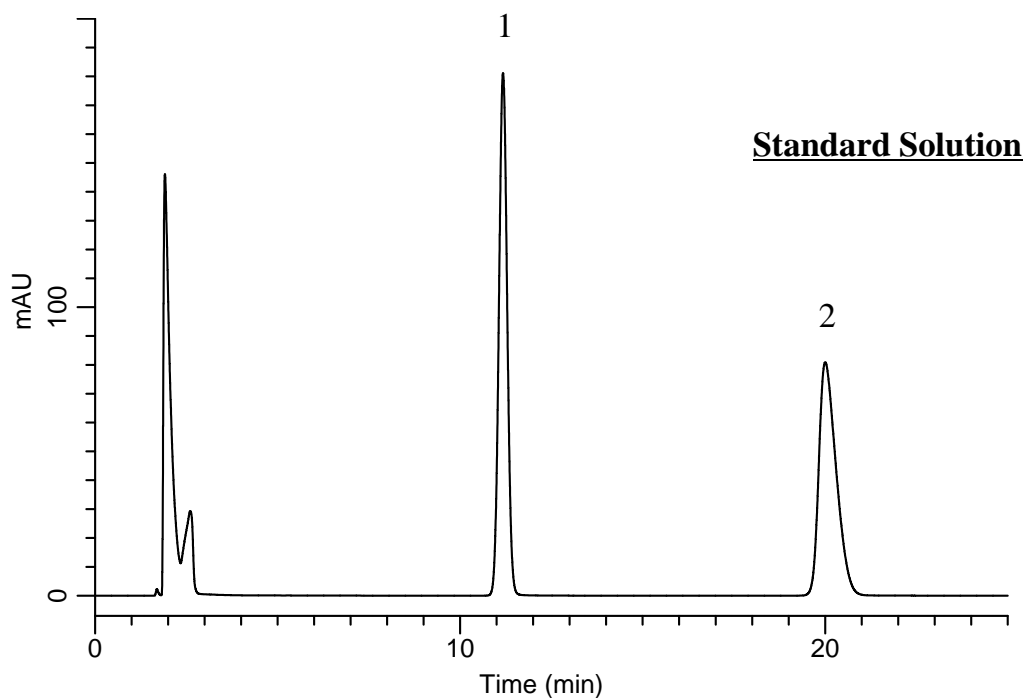
# InertSearch™ for LC

Inertsil® Applications

## Analysis of Rebamipide

(Under the Condition of the Japanese Pharmacopoeia, Rebamipide Tablets)

Data No. LB339-0894



### Conditions

**System** : GL7700 HPLC system  
**Column** : InertSustain C18  
(5  $\mu$  m, 150 x 4.6 mm I.D.)  
**Column Cat. No.** : 5020-07345  
**Eluent** : A) CH<sub>3</sub>CN  
B) Buffer\*  
A/B = 17/83, v/v  
**Flow Rate** : 0.91 mL/min  
**Col. Temp.** : 25 °C  
**Detection** : UV 254 nm (UV7750 UV Detector)  
**Injection Vol.** : 20  $\mu$  L  
**Sample** : Standard

### Analyte:

1. Acetanilide 40  $\mu$  g/L  
2. Rebamipide 60  $\mu$  g/L

Resolution (1, 2) : 13.8 ( $\geq$  8)  
RSD of the peak  
area ratio of  
2 to 1 (%) (n=6) : 0.13 ( $\leq$  1.0)

\*Add 750 mL of water in 300 mL of pH6.2 phosphate buffer\*\*

\*\*Dissolve 9.08 g of potassium dihydrogen phosphate in 1,000 mL of water (Solution A).

Add 1.892 g of disodium hydrogen phosphate in 200 mL of water to 800 mL of Solution A.