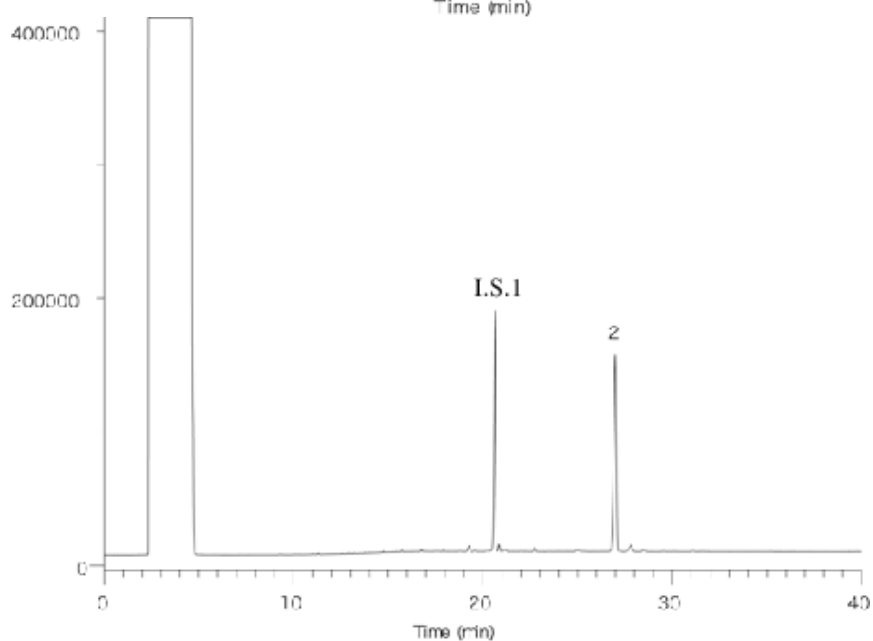
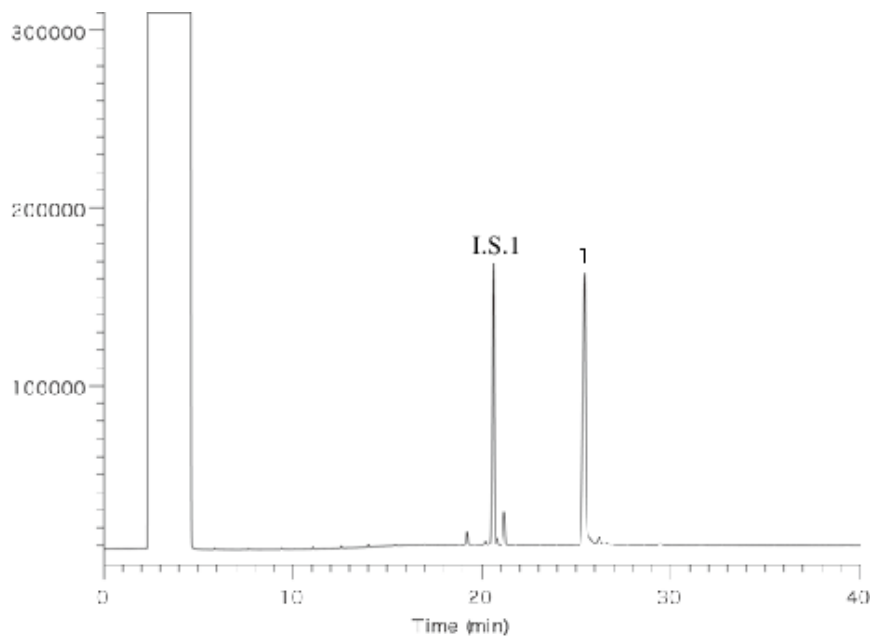


InertSearch™ for GC

InertCap® Applications

Cholesterols

Data No. GA016-0000



System : GC/FID
Column : InertCap 1
0.25mm I.D. × 30m df = 0.25µm
Column Temp. : 150°C → 10°C/min → 290°C (26min)
Carrier Gas : He
Injection : Splitless 1µL
280°C
Detection : FID
290°C
Sample : Cholesterol

Solutes : 1. Cholesterol(100µg/mL)
2. Cholesterol-TMS(50µg/mL)
I.S.1 : 5a-Cholestane(50µg/mL)