

African  
Jacquard

# CATALOGUE

2026 WHOLESALE PRICELIST (ZAR)



# INDEX:

## READY-TO-SHIP COLLECTIONS

01-04	KUBA SUMMER
05-08	SAFARI
09-10	GONDISSA
11-14	FLAMBOYANT
15-16	HIBISCUS
17-20	DANAKIL
21-22	MELANGE
23-26	MIXED WAFFLE
27-34	METALLIC BOGOLAN
35-46	BOGOLAN
47-48	MOHAIR
49-50	SEACELL/LINEN
51-52	KELP FOREST
53-56	OUTDOOR KUBA
57-64	TEA TOWELS
59-60	AFRICA MAP
61	CAPE CREATURES
62	POSTCARD
63	BARBERSHOP
64	WILDLIFE
65	CAPE TOWN





AFRICAN JACQUARD IS A  
LUXURY HOME TEXTILES COMPANY  
BASED IN THE HEART OF CAPE  
TOWN, SOUTH AFRICA. SINCE  
2014, WE HAVE BEEN DESIGNING  
AND PRODUCING TEXTILE  
COLLECTIONS THAT ARE MORE  
THAN JUST BEAUTIFUL FABRICS,  
THEY ARE STORIES WOVEN  
FROM OUR TRAVELS THROUGHOUT  
AFRICA. EACH PIECE REFLECTS  
THE CONTINENT'S RICH CULTURAL  
HERITAGE AND THE BEAUTY OF  
ITS LANDSCAPES. WELCOME, TO  
OUR WEAVING JOURNEY.



# FROM CONGO TO COASTLINE

# KUBA SUMMER COLLECTION:

Inspired by the traditional Kuba Cloth of Congo, woven in 100% cotton with a honeycomb waffle texture.



**CUSHION COVERS: R330** MOQ 4 UNITS PER COLOUR

100% COTTON | 55x55cm / 22x22"



FUCHSIA



LAGOON



LEMON



LIME



CORAL

# SUMMER, WOVEN IN COLOUR



**THROWS: R1050** MOQ 2 UNITS PER COLOUR  
100% COTTON | 130x210cm / 51x83"



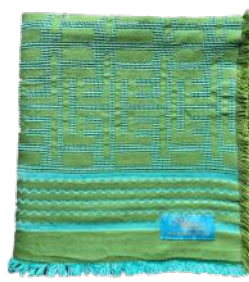
FUSCHIA



CORAL



LEMON



LIME



LAGOON



**HAND TOWELS: R175**    MOQ 6 UNITS PER COLOUR  
 100% COTTON | 50x60cm / 19x24"



FUSCHIA



CORAL



LEMON



LIME



LAGOON

**BEACH TOWELS: R590**    MOQ 4 UNITS PER COLOUR  
 100% COTTON | 80x165cm / 31x65"



FUSCHIA



CORAL



LEMON



LIME



LAGOON



# SHADES OF SAFARI

# SAFARI COLLECTION:

An ode to Africa's outdoors, woven into patterns that capture the spirit of the wild.



**THROWS: R1020** MOQ 2 UNITS PER COLOUR

100% COTTON | 205x125cm / 81x49"



ZEBRA  
MOSS



ZEBRA  
WATERLILLY



GIRAFFE  
MUSHROOM



GIRAFFE  
ROOIBOS

TOWELS: R540 MOQ 4 UNITS PER COLOUR  
100% COTTON | 80x155cm / 31x61"



ZEBRA  
MOSS



ZEBRA  
WATERLILLY



GIRAFFE  
MUSHROOM



GIRAFFE  
ROOIBOS





**HAND TOWELS: R175** MOQ 6 UNITS PER COLOUR  
 100% COTTON | 50x60cm / 19x24"



ZEBRA  
MOSS



ZEBRA  
WATERLILLY



GIRAFFE  
MUSHROOM



GIRAFFE  
ROOIBOS

**CUSHION COVERS: R330** MOQ 4 UNITS PER COLOUR  
 100% COTTON | 55x55cm / 22x22"



ZEBRA  
MOSS



ZEBRA  
WATERLILLY



GIRAFFE  
MUSHROOM



GIRAFFE  
ROOIBOS

# GONDISSA COLLECTION:

A harmony of hues, this collection celebrates colour in all its vibrancy, woven into bold, eclectic patterns.



## TABLE LINEN:

100% COTTON

R180 PLACEMAT MOQ 8 UNITS | 33x48cm / 13x19"

R575 RUNNER MOQ 4 UNITS | 33x192cm / 13x76"



SCALLOPS & STRIPES



SCALLOPS & STRIPES



**CUSHION COVERS:** MOQ 4 UNITS PER COLOUR & SIZE

100% COTTON

R440 45x70cm / 18x28" | R465 60x60cm / 24x24"



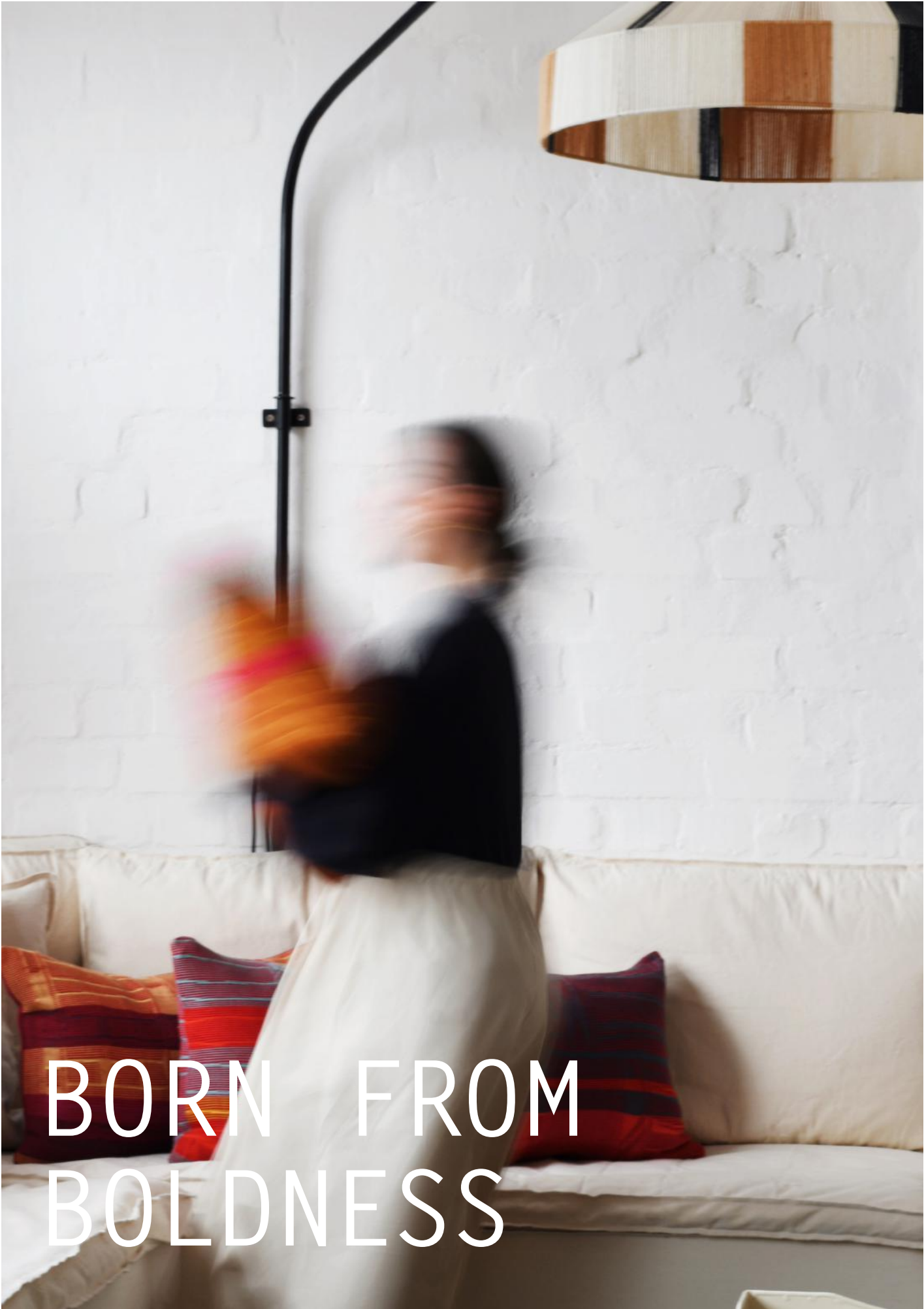
THE PEOPLE



SCALLOPS & STRIPES



SCALLOPS & STRIPES



# BORN FROM BOLDNESS

# FLAMBOYANT COLLECTION:

Rooted in the Flamboyant tree's radiant tones, this collection celebrates colour at its most vibrant.



**CUSHION COVERS: R420** MOQ 4 UNITS PER COLOUR  
100% COTTON | 45X70cm / 18x28"



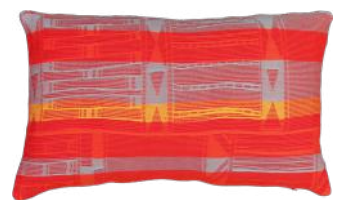
TEAL/  
ORANGE



MAUVE/  
YELLOW



GREEN/  
PINK



TURQUOISE/  
YELLOW

SCARVES: R735 MOQ 4 UNITS PER COLOUR  
100% COTTON | 45x200cm / 18x79"



TEAL/  
ORANGE



MAUVE/  
YELLOW



PINK/  
GREEN



TURQUOISE/  
YELLOW



LOUNGE THROWS: R1790 MOQ 2 UNITS PER COLOUR

100% COTTON | 135x180cm / 53x71"



TEAL/  
ORANGE



YELLOW/  
MAUVE



PINK/  
GREEN



TURQUOISE/  
YELLOW



# HIBISCUS COLLECTION:

Inspired by the abundant blooms found in African gardens, those bright, that seem to follow the sun.



## NAPKINS: R100

MOQ 8 UNITS | SAGE / SAGE REVERSE

100% COTTON

40X40cm / 16X16"

## PLACEMATS: R145

MOQ 8 UNITS | MITRED CORNER

100% COTTON

36x46cm / 14x18"



## TABLE RUNNERS: R510 MOQ 4 UNITS

100% COTTON | 54x54cm / 21x21"



## TABLECLOTHS:

MOQ 2 UNITS PER SIZE | MITRED CORNER

100% COTTON

- R1515 6 SEATER 180x220cm / 71x87"
- R1815 8 SEATER 175x245cm / 69x96"
- R2180 10 SEATER 175x295cm / 69x116"
- R2555 12 SEATER 175x355cm / 69x140"







We weave  
with *intention*-  
for people,  
for place,  
for possibility.

# DANAKIL COLLECTION:

Inspired by the raw beauty and mineral tones of Ethiopia's shimmering salt plains and vast valleys.



**HAND TOWELS: R260** MOQ 6 UNITS PER COLOUR  
100% COTTON | 60x95cm / 24x37"



SALT



VOLCANO



SAND

**BATH SHEETS: R695** MOQ 4 UNITS PER COLOUR  
100% COTTON | 97x190cm / 38x75"



SALT



VOLCANO



SAND

# MELANGE COLLECTION:

A mix of waffle weaves and two complementary tones, brought together as a true melange for a softly blended, textured effect.



**HAND TOWELS: R205** MOQ 6 UNITS PER COLOUR  
100% COTTON | 45x85cm / 18x33"



CORNFLOWER



LIQUORICE



OLIVE



SESAME

**BATH TOWEL: R540** MOQ 4 UNITS PER COLOUR  
100% COTTON | 80x145cm / 31x57"



CORNFLOWER



LIQUORICE



OLIVE



SESAME

# MIXED WAFFLE COLLECTION:

A classic made modern. Essential 100% cotton pieces with a timeless texture, fringed as standard and hemmed on request.



# TOWELS: MOQ 4 UNITS PER COLOUR & SIZE

100% COTTON

## WHITE

R200 HAND TOWELS 50x85cm / 20x33"

R415 BATH TOWELS 80x155cm / 31x61"

R765 BATH SHEETS 110x175cm / 43x69"

## EVERGREEN

R205 HAND TOWELS 50x85cm / 20x33"

R430 BATH TOWELS 80x155cm / 31x61"

R785 BATH SHEETS 110x175cm / 43x69"



## BEDSPREADS: MOQ 2 UNITS PER COLOUR & SIZE

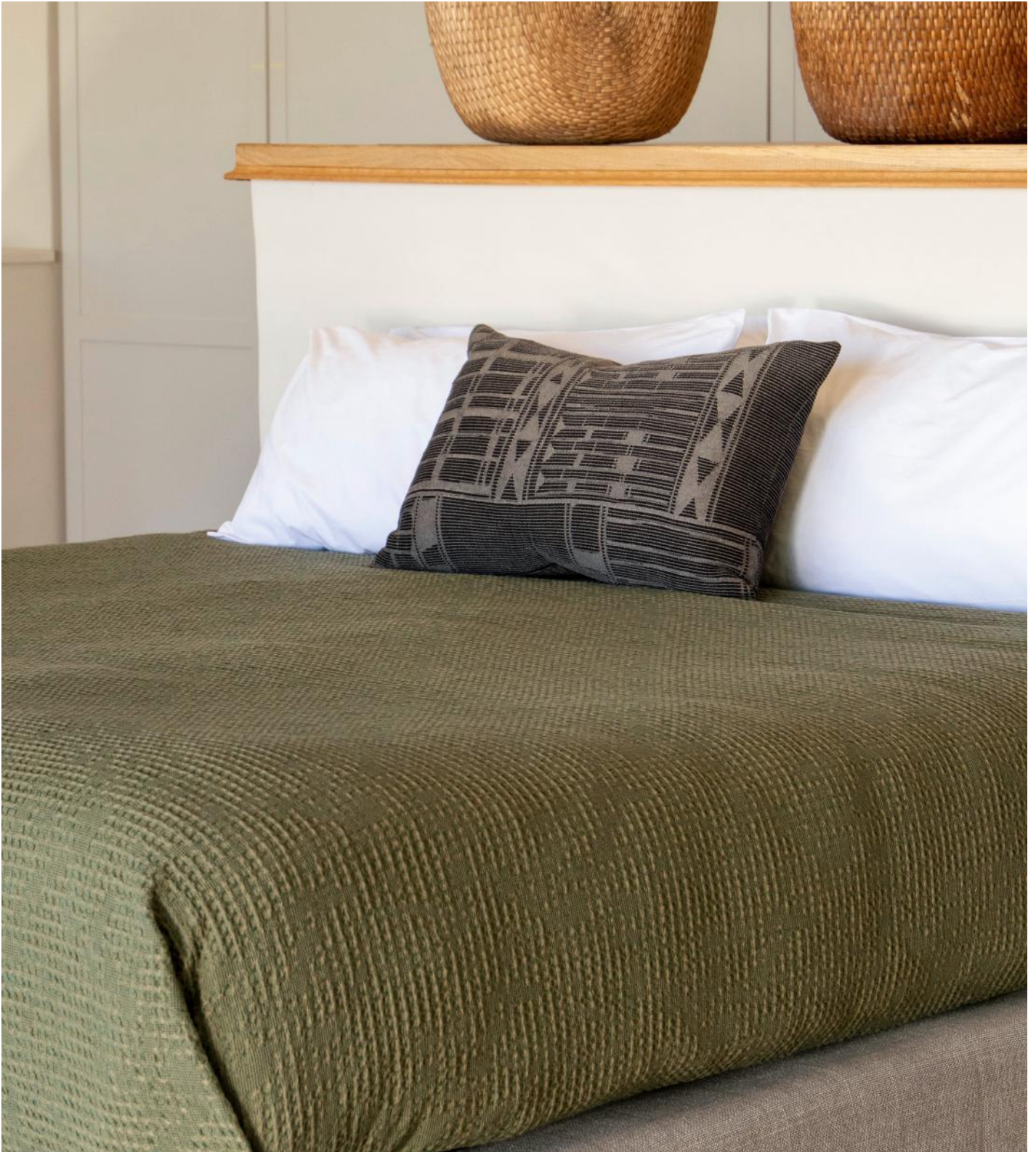
100% COTTON | MITRED CORNER

### WHITE

R1710	SINGLE	140x200cm	/	55x79"
R2270	DOUBLE	200x200cm	/	79x79"
R2675	QUEEN	200x235cm	/	79x93"
R2845	KING	220x225cm	/	87x89"
R3240	SKING	260x235cm	/	102x93"

### EVERGREEN

R1745	SINGLE	140x200cm	/	55x79"
R2320	DOUBLE	200x200cm	/	79x79"
R2735	QUEEN	200x235cm	/	79x93"
R2910	KING	220x225cm	/	87x89"
R3310	SKING	260x235cm	/	102x93"



## FACECLOTHS:

MOQ 8 UNITS | MITRED CORNER

100% COTTON | 30x30cm / 12x12"

WHITE R100 / EVERGREEN R100



## BATHMATS:

MOQ 4 UNITS | MITRED CORNER

100% COTTON | 45x65cm / 18x26"

WHITE R430 / EVERGREEN R440



## BATHROBES:

MOQ 2 UNITS | LENGTH OPTIONAL  
(KNEE/CALF/ANKLE)

100% COTTON | SML/MED & MED/LRG

WHITE  
R1790



EVERGREEN  
R1840



Lustre in  
every layer.





# METALLIC BOGOLAN COLLECTION:

Grounded in bold geometry, woven together with the alluring colours of precious metals. Textural, layered, and striking.



**CUSHION COVERS:** MOQ 4 UNITS PER COLOUR & SIZE

COTTON/LINEN

R430 50x50cm / 20x20" | R570 45x70cm / 18x28"



COPPER/GOLD



COPPER/GOLD  
(REVERSED)



COPPER/GOLD



COPPER/GOLD  
(REVERSED)

**THROWS & BEDSPREADS:** MOQ 2 UNITS PER SIZE

COTTON/LINEN

R2305 LOUNGE THROWS 135x200cm / 53x79"

R4585 BED THROWS 210x290cm / 83x114"

R5735 BEDSPREADS 290x300cm / 114x118"



COPPER/GOLD



COPPER/GOLD



COPPER/GOLD

**CUSHION COVERS:** MOQ 4 UNITS PER COLOUR & SIZE

COTTON/LINEN

R410 50x50cm / 20x20" | R540 45x70cm / 18x28"



GOLD/BLACK



GOLD/BLACK  
(REVERSED)



GOLD/BLACK



GOLD/BLACK  
(REVERSED)

**THROWS & BEDSPREADS:** MOQ 2 UNITS PER SIZE

COTTON/LINEN

R2085 LOUNGE THROWS 135x200cm / 53x79"

R3960 BED THROWS 210x290cm / 83x114"

R4985 BEDSPREADS 290x300cm / 114x118"



GOLD/BLACK



GOLD/BLACK



GOLD/BLACK



## NAPKINS: R205

MOQ 8 UNITS

COTTON/LINEN | 54x54cm / 21x21"



GOLD/BLACK

## TABLECLOTHS:

MOQ 2 UNITS PER SIZE | MITRED CORNER

COTTON/LINEN

- R2200 8 SEATER 175x245cm / 69x96"
- R2665 10 SEATER 175x295cm / 69x116"
- R3195 12 SEATER 175x355cm / 69x140"
- R3650 14 SEATER 175x415cm / 69x163"
- R4330 16-18 SEATER 175x480cm / 69x189"



GOLD/BLACK



# METALLICS MADE MODERN



For linen lovers.



# BOGOLAN COLLECTION:

A modern homage to the traditional mud cloth of Mali.  
Woven with a soft honeycomb texture in linen and cotton blends.



**CUSHION COVERS:** MOQ 4 UNITS PER COLOUR & SIZE

100% LINEN

R585 45x70cm / 18x28" | R775 65x65cm / 26x26"



NATURAL SAND



WHITE SAND



NATURAL SAND



WHITE SAND

**FLOUNCED CUSHION COVERS:** MOQ 4 UNITS PER COLOUR & SIZE

100% LINEN

R775 45x45cm / 17x17" | R1290 70x70cm / 27x27"



NATURAL SAND



WHITE SAND



NATURAL SAND



WHITE SAND

**BED THROWS:** R2735 MOQ 2 UNITS PER COLOUR

100% LINEN | 135x270cm / 53x106"



NATURAL SAND



WHITE SAND



**CUSHION COVERS:** MOQ 4 UNITS PER COLOUR & SIZE

100% LINEN

R615 45x70cm / 18x28" | R820 65x65cm / 26x26"



EBONY



RUST



EBONY



RUST

**FLOUNCED CUSHION COVERS:** MOQ 4 UNITS PER COLOUR & SIZE

100% LINEN

R810 45x45cm / 17x17" | R1360 70x70cm / 27x27"



EBONY



RUST



EBONY



RUST

**BED THROWS:** R2925 MOQ 2 UNITS PER COLOUR

100% LINEN | 135x270cm / 53x106"



EBONY



RUST



**CUSHION COVERS:** MOQ 4 UNITS PER COLOUR & SIZE

COTTON/LINEN

R510 40x60cm / 16x24" | R635 60x60cm / 24x24"



BUSH



BARK



BUSH



BARK

**OXFORD FLAP CUSHION COVERS:** MOQ 4 UNITS PER COLOUR & SIZE

COTTON/LINEN

R650 40x60cm / 16x24" | R955 60x60cm / 24x24"



BUSH



BARK



BUSH



BARK

**BED THROWS:** R2380 MOQ 2 UNITS PER COLOUR

COTTON/LINEN | 130x260cm / 51x102"



BUSH



BARK



**LOUNGE TROWS:** MOQ 2 UNITS PER COLOUR  
100% LINEN | 135x200cm / 53x79"



R1985  
DESERT



R1985  
STONE



R2120  
GRAPHITE



PATTERN WITH  
PRESENCE

**SCARVES:** MOQ 4 UNITS PER COLOUR  
100% LINEN | 42x210cm / 17x83"



R775  
DESERT



R775  
STONE



R820  
GRAPHITE

# MOHAIR COLLECTION:

Airy mohair, breathable linen, and the subtle shimmer of silk, this collection pairs softness with structure.

**THROWS: R3695** MOQ 2 UNITS PER COLOUR  
MOHAIR/LINEN/SILK | 135x210cm / 52x82"



CHARCOAL



NATURAL

**WRAPS: R1985** MOQ 2 UNITS PER COLOUR  
MOHAIR/LINEN/SILK | 65x210cm / 25x82"



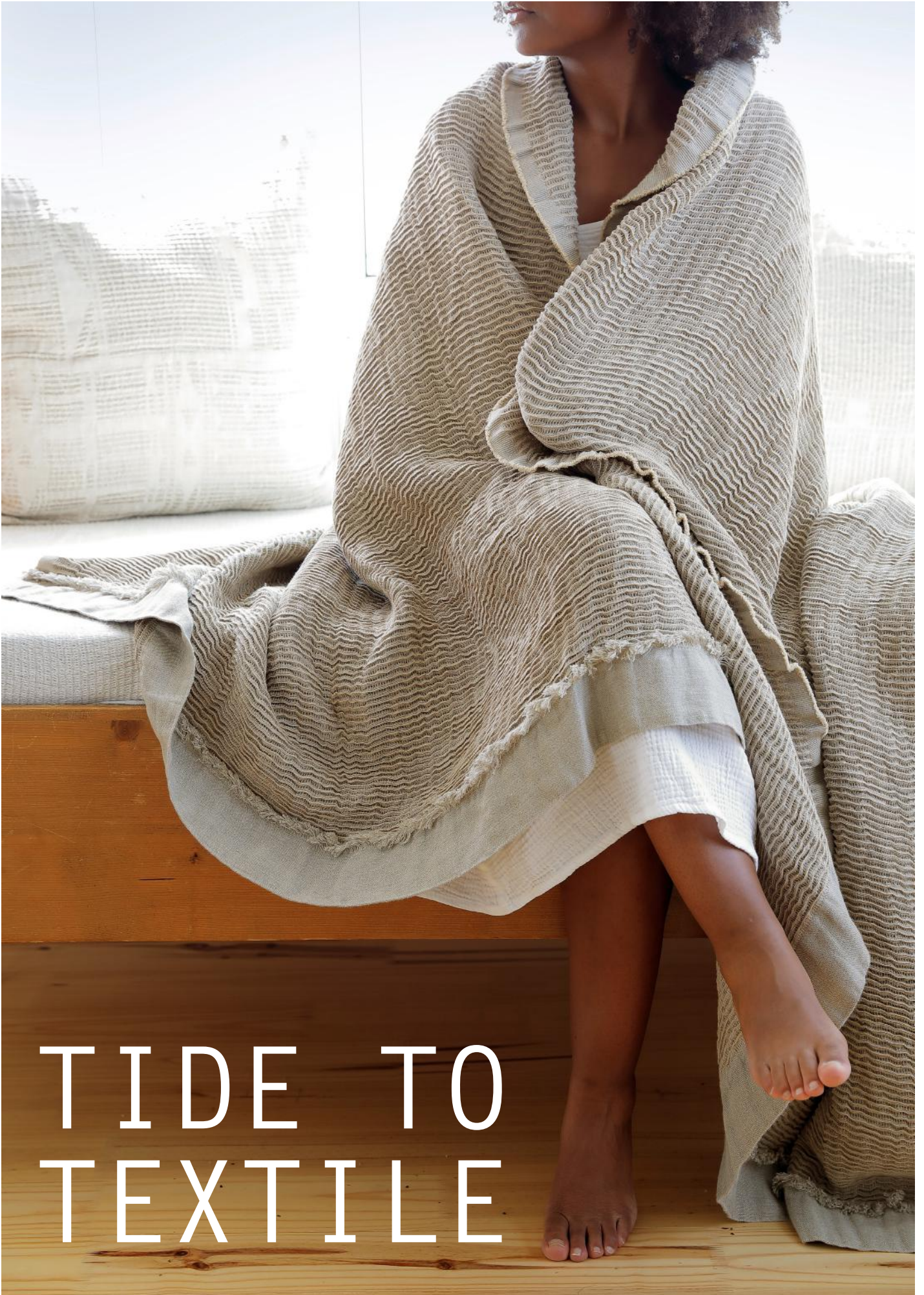
CHARCOAL



NATURAL



FINE &  
FEATHER  
LIGHT



# TIDE TO TEXTILE

# SEACELL THROW: R6615

SEACELL/LINEN | 130x210cm / 51x82"

Woven with linen and SeaCell™, a seaweed-based fibre that's cooling, calming, and kind to the skin.



# KELP FOREST COLLECTION:

Woven like currents, textured like tidepools, the Kelp Forest Collection is alive with the colour and movement of the sea.

**CUSHION COVERS: R495** MOQ 4 UNITS PER COLOUR

COTTON/LINEN | 60x60cm / 24x24"



AMBER



CORAL



SEAGRASS

**BEDSPREADS:** MOQ 2 UNITS PER COLOUR & SIZE

COTTON/LINEN

R3665 DOUBLE 220x255cm / 87x100" | R3920 QUEEN 240x255cm / 95x100"

R4645 KING 260x255cm / 102x100" | R5010 SUPER KING 300x240cm / 118x95"



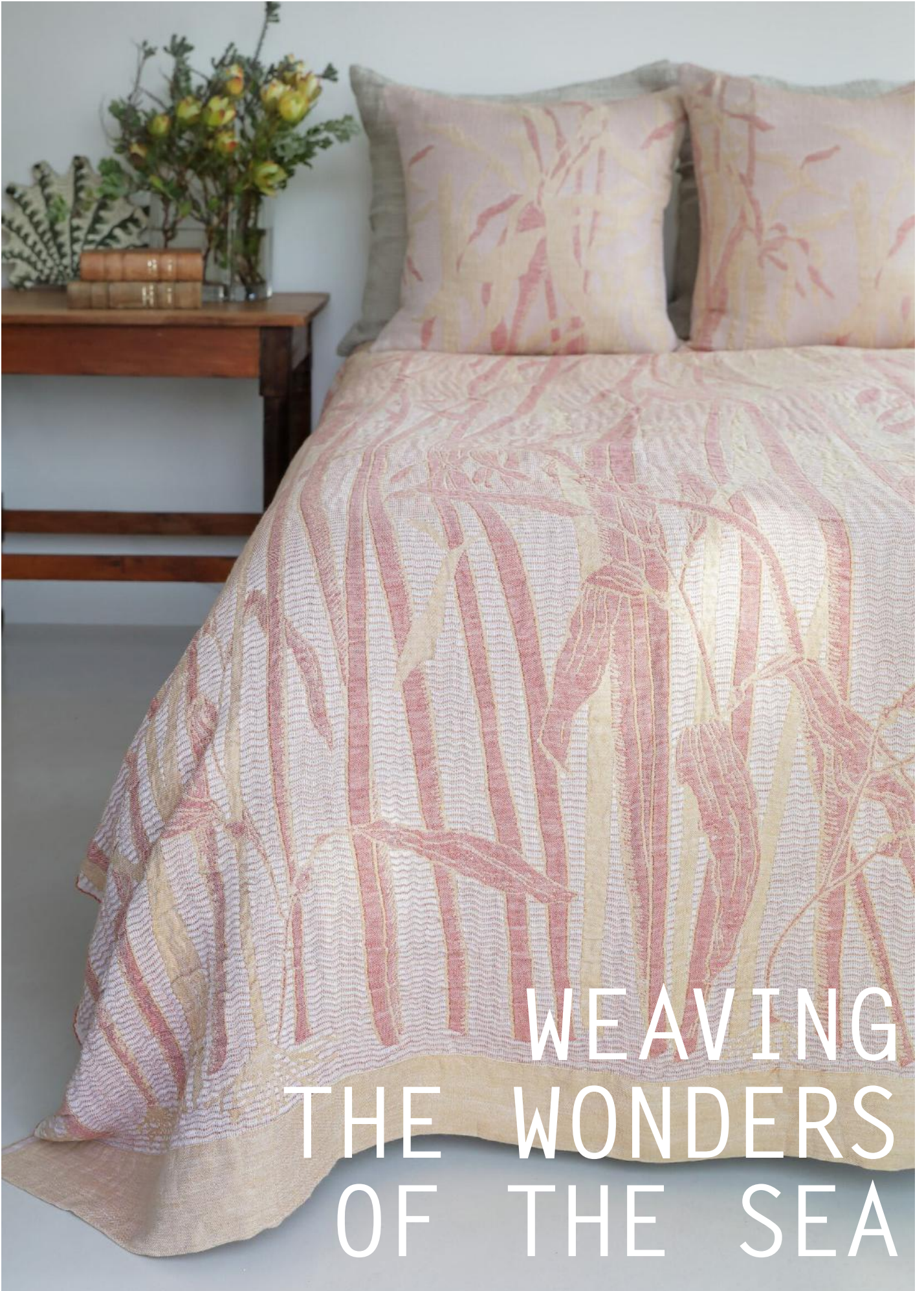
AMBER



CORAL



SEAGRASS



WEAVING  
THE WONDERS  
OF THE SEA

UV-PROOF  
& WATER-  
REPELLENT



# KUBA OUTDOOR COLLECTION:

Woven for open-air spaces. Made to withstand the elements.  
Designed to bring pattern and texture outside.

**CUSHION COVERS: R505** MOQ 4 UNITS PER COLOUR  
100% POLYESTER | 60x60cm / 24x24"



EVERGREEN



MIST



PLUM



TERRACOTTA

**CUSHION COVERS: R415** MOQ 4 UNITS PER COLOUR  
100% POLYESTER | 40x60cm / 16x24"



EVERGREEN



MIST



PLUM



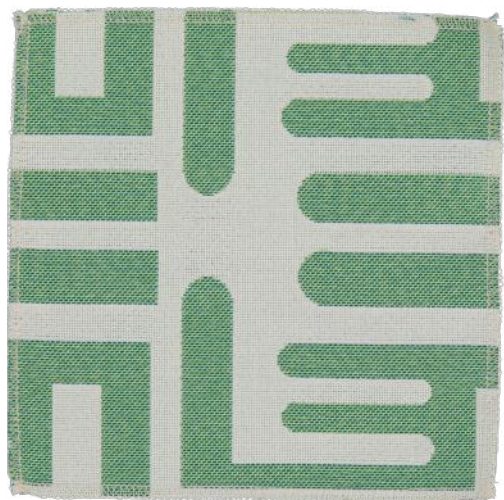
TERRACOTTA

# PATTERN MEETS DURABILITY



# UPHOLSTERY FABRIC: R525/m MOQ 25M

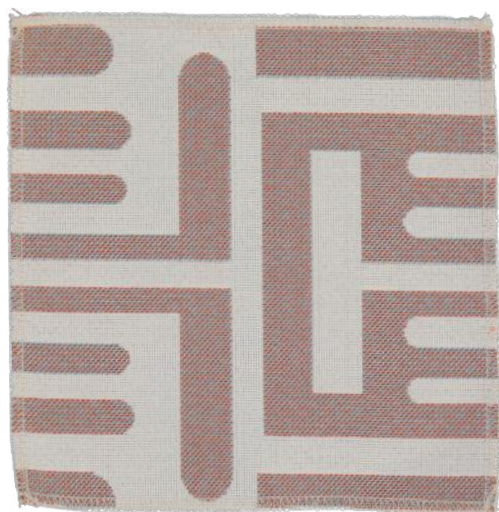
POLYESTER/ACRYLIC | Width: 145cm | Rub Count: 30000 Martindale  
Finish: Water & Soil Repellent | Light Fastness: 6-7



EVERGREEN



MIST



PLUM



TERRACOTTA





# TEA TOWEL COLLECTION

*Because every great  
chef needs a sidekick.*



# AFRICA MAP COLLECTION:

A collection that turns the everyday tea towel into something striking, with Africa's iconic shape woven across bold palettes.



TEA TOWELS : R170 MOQ 4 UNITS PER COLOUR  
100% COTTON | 45x62cm / 18x24"



CLEMENTINE  
/WHITE



GREEN  
/WHITE



LILAC  
/WHITE



ORANGE  
/WHITE



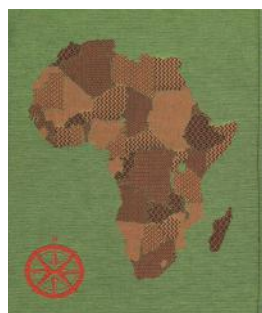
TEAL  
/WHITE



YELLOW  
/WHITE



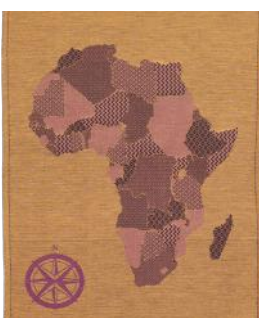
CLEMENTINE  
/BLACK



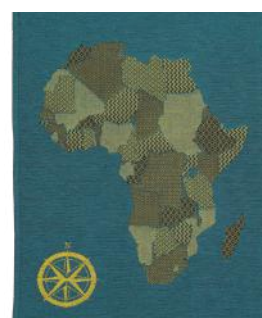
GREEN  
/BLACK



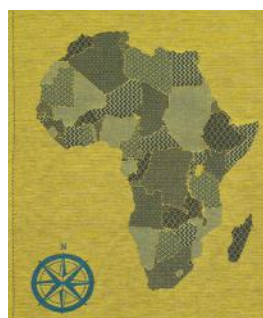
LILAC  
/BLACK



ORANGE  
/BLACK



TEAL  
/BLACK



YELLOW  
/BLACK

# CAPE CREATURES COLLECTION:

Inspired by the wild, whimsical world of the Cape and designed in collaboration with a local Cape Town artist.

TEA TOWELS : R155 MOQ 6 UNITS PER COLOUR

100% COTTON | 45x62cm / 18x24"



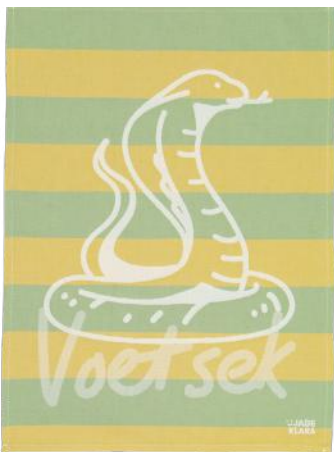
BABOON



DASSIE



FISH



CAPE COBRA



SHARK



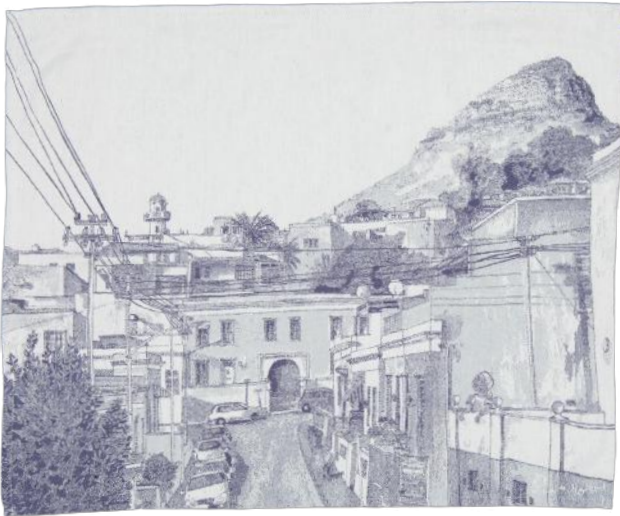
WHALE

# POSTCARD COLLECTION:

A woven celebration of Cape Town's most loved landmarks, designed in collaboration with a local Cape Town artist.

TEA TOWELS : R185 MOQ 6 UNITS PER COLOUR

100% COTTON | 62x74cm / 24x30"



BO KAAP



KITE SURFERS



# BARBERSHOP COLLECTION:

A graphic motif rooted in African street culture, reimagined as a woven tea towel with bold character.

TEA TOWELS : R155 MOQ 6 UNITS PER COLOUR  
100% COTTON | 45x62cm / 18x24"



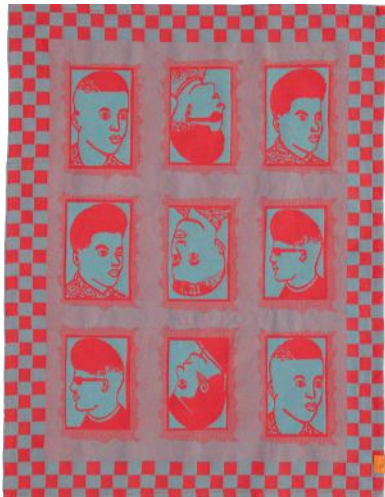
PINK/RED



GREEN/RED



YELLOW/RED



BLUE/RED



# WILDLIFE COLLECTION:

A spirited nod to African wildlife, turning familiar silhouettes into everyday kitchen companions.

TEA TOWELS : R155 MOQ 6 UNITS PER COLOUR

100% COTTON | 45x62cm / 18x24"



RHINO  
GREEN



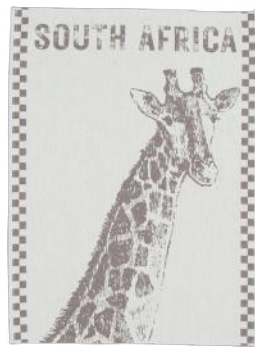
WILDLIFE  
GREEN



ZEBRA  
GREEN



ELEPHANT  
BARK



GIRAFFE  
BARK



LIONS  
BARK



ELEPHANT  
LIME



LEOPARD  
LIME



CROCODILE  
LIME

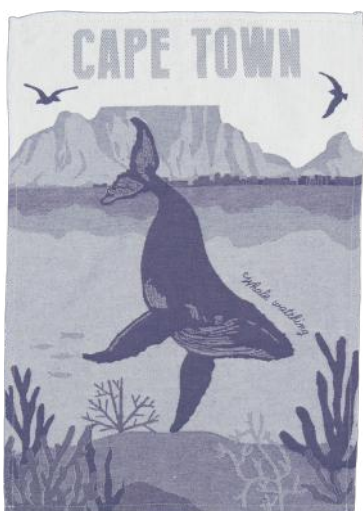


# CAPE TOWN COLLECTION:

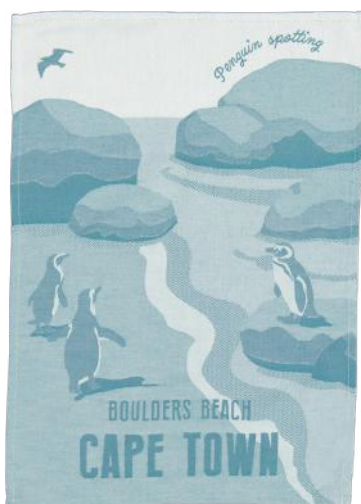
Drawn from the scenes that shape Cape Town, this collection weaves coastline, wildlife, and mountain into tea towels.

## TEA TOWELS:

100% COTTON | 45x62cm / 18x24"



WHALE WATCHING BLUE



BOULDERS BEACH TEAL

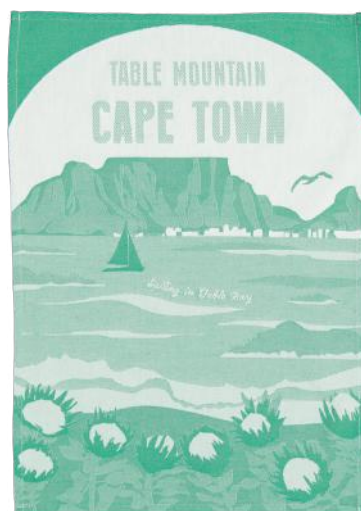


TABLE MOUNTAIN GREEN



African  
Jacquard



Rooted in Africa,  
designed for the world.

[www.africanjacquard.com](http://www.africanjacquard.com)