

PEKIN PARK DISTRICT

SPRING & SUMMER PLAY GUIDE 2025

Find Your Fun!





OSF HealthCare Center for Health in Pekin

We offer cardiovascular and primary care, along with a variety of diagnostic services Monday through Friday, all conveniently located in the East Court Village Shopping Center in Pekin.

OSF Medical Group – Primary Care

Monday–Friday | 8 a.m.–5 p.m.

Phone: (309) 477-6000

OSF HealthCare Illinois Neurological Institute

Neurology (*First, second and third Thursday*)

Phone: (877) 464-6670

Neurosurgery (*First Thursday*)

Phone: (877) 464-6670

Physiatry (*First Monday*)

Phone: (309) 464-6670

OSF Orthopedics

Open Mondays and first Wednesdays | 8 a.m.–4:30 p.m.

Phone: (309) 676-5546

OSF HealthCare Cardiovascular Institute

Monday–Friday | 8:30 a.m.–5 p.m.

Phone: (309) 346-7776

Available diagnostic services:

- Lab
- EKG and X-ray
- Echocardiography
- Vascular testing
- Holter and 30-day event monitors



OSF[®] HEALTHCARE

OSF HealthCare Center for Health | 3422A Court St. | Pekin

PEKIN PARK DISTRICT ADMINISTRATION



BOARD OF COMMISSIONERS

Kristen Walraven, President
kwalraven@pekinparkdistrict.org

Sue McMillan, Vice President
smcmillan@pekinparkdistrict.org

Greg Ranney, Commissioner
granney@pekinparkdistrict.org

Gary Gillis, Commissioner
ggillis@pekinparkdistrict.org

Kyle Cain, Commissioner
kcain@pekinparkdistrict.org

Mike Dralle, Commissioner
mdralle@pekinparkdistrict.org

Steve Sours, Commissioner
ssours@pekinparkdistrict.org

EXECUTIVE DIRECTOR

Cameron Bettin
cbettin@pekinparkdistrict.org

SUE MCMILLAN, KYLE CAIN, STEVE SOURS, GREG RANNEY, GARY GILLIS, KRISTEN WALRAVEN, MIKE DRALLE

TABLE OF CONTENTS

Facilities & Contact Info	4
Community Highlights	5
Pekin Park Foundation	6
Terri Gambetti Scholarship Fund	7
Pekin Farmers Market	8
Brining a Performing Arts Venue to Pekin	9
Community Events & Programs	10
Kids Sports & Athletics	12
Adult Softball & Sand Volleyball	15
Parkside Fitness	16
Blazin' A Trail Riding & Boarding	19
Golf	20
DragonLand Water Park & Swim Lessons	24
Mineral Springs Park Fun	26
Day Camps	28
IRVSRA (special needs programs)	30
Submit Your Pekin Park Photos	31
Miller Center	32
Rental Facilities	36
Birthday Parties	37
Questions	38
Parks, Facilities, Amenities Matrix	39
More Community Submitted Photos	40
Thank You To Our Sponsors	41

Please go to pekinparkdistrict.org for the most up-to-date program offerings.

FACILITIES AND CONTACT INFORMATION

PARKS

Blenkiron Park
601 Park Ave.
Pekin, IL 61554

Coal Miners' Park
300 S. Parkway Dr.
Pekin, IL 61554

Independence Park
612 Lasalle Blvd.
Marquette Heights, IL 61554

James Field
101 S. 9th St.
Pekin, IL 61554

John T. McNaughton Park
217 McNaughton Park Rd.
Pekin, IL 61554

Kiwanis Park South
On the Corner of Ninth & Koch St.
Pekin, IL 61554

Miller Park
121 Court St.
Pekin, IL 61554

Mineral Springs Park & Lagoon
1701 Court St.
Pekin, IL 61554

Railsplitter's Park
268 Derby St.
Pekin, IL 61554

Riverfront Park
121 Court St.
Pekin, IL 61554

Rotary Park
1115 State St.
Pekin, IL 61554

Southside Business Association Park
200 Sapp St.
Pekin, IL 61554

Sports Complex
300 Koch St.
Pekin, IL 61554

Tante Park
Broadway Rd.
Pekin, IL 61554

Willow Park
500 Willow St.
Pekin, IL 61554

GOLF COURSES

Lick Creek Golf Course
2210 N. Parkway Dr.
Pekin, IL 61554
Phone: (309) 346-0077
Fax: (309) 347-1262

Parkview Golf Course
2300 Broadway St.
Pekin, IL 61554
Phone: (309) 346-8494
Fax: (309) 346-6016

FUN & GAMES

Boating on the Lagoon
Phone: (309) 347-7275

DragonLand Water Park
193 Red Bud Memorial Dr.
Pekin, IL 61554
Phone: (309) 347-4000

Parkside Fitness
300 Red Bud Dr.
Pekin, IL 61554
Phone: (309) 347-6644
Fax: (309) 347-4472

Magic Dragon Mini Golf
210 Recreation Dr.
Pekin, IL 61554
Phone: (309) 353-1244

Pekin Archers, Inc.
2510 Edgewater Dr.
Pekin, IL 61554
Email: pekinarchers1@gmail.com

Blazin' A Trail Riding & Boarding
217 McNaughton Park Rd.
Pekin, IL 61554
Phone: (309) 382-1268

COMMUNITY CENTERS

IRVSRA Recreational Center
1715 Dragon Dr., Suite B
Pekin, IL 61554
Phone: (309) 201-4005
Email: info@irvsra.org

Miller Center
551 S. 14th St.
Pekin, IL 61554
Phone: (309) 346-5210
Email: millercenter@pekinparkdistrict.org

Pavilion on the Lagoon
257 Pavilion Rd.
Pekin, IL 61554
Phone: (309) 201-4008
Email: rentals@pekinparkdistrict.org

ADMINISTRATIVE OFFICES

Recreation Department
Veterans Memorial Arena
250 Redbud Memorial Dr.
Pekin, IL 61554
Phone: (309) 347-7275

Robert N. Blackwell Administration Building
1715 Dragon Dr., Suite A
Pekin, IL 61554
Phone: (309) 353-5330
Fax: (309) 353-1787

EMERGENCY NUMBERS

Park Police
Phone: (309) 346-3132

Inclement Weather Line
Phone: (309) 226-4060



COMMUNITY HIGHLIGHTS



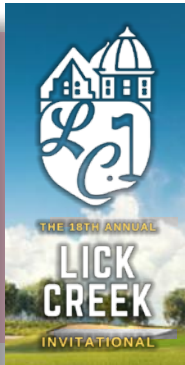
GRAND OPENING PERFORMING ARTS VENUE

Join us on June 7, 2025, for the grand opening celebration of the new Performing Arts Venue. This exciting event will feature live music from the Backstreet Band, Fun on the Run inflatables for all ages, a variety of food trucks offering delicious options, and beer and wine sales to enjoy throughout the evening. The celebration will conclude with a laser light show lighting up the sky sponsored by the Pekin Park Foundation. Gather your friends and family and be part of this special night filled with great entertainment, food, and fun. Don't miss the chance to experience everything The new Performing Arts Venue has to offer as we celebrate this new community space.

TAZEWELL COUNTY 4-H SHOW

The 2024 Tazewell County 4-H Show will take place in Mineral Springs Park July 29 - July 31. Stop by and check out all the exhibits, events, vendors, and food.

- Cultural Arts Exhibit Hall (Parkside)
- Veterans Memorial Arena/Ice Rink
- Livestock Review Building (LRB)
- Beef/Dairy/Horse/Goat Barn
- Poultry/Rabbit Barn
- Sheep/Swine Barn
- 4-H Shelter



FUNKY MONKEY GOLF EVENT

The 7th annual Funky Monkey Golf Event benefits Pekin Park Foundation's Steve Funk Junior Golf Fund. The fund's purpose is to allow area youth to participate in junior golf programs within Pekin Park District at a reduced rate. Details to register your four-person scramble team or sponsor a hole can be found on page 17.

Event Date: May 10, 2025

LICK CREEK INVITATIONAL

Save the date! You are invited to participate in the 18th Annual Lick Creek Invitational, a two-man scramble, match play tournament. Each flight will consist of eight teams. Entry forms will be available at both Lick Creek and Parkview Golf Courses around early August, 2025.

Event Date: September 5-7, 2025

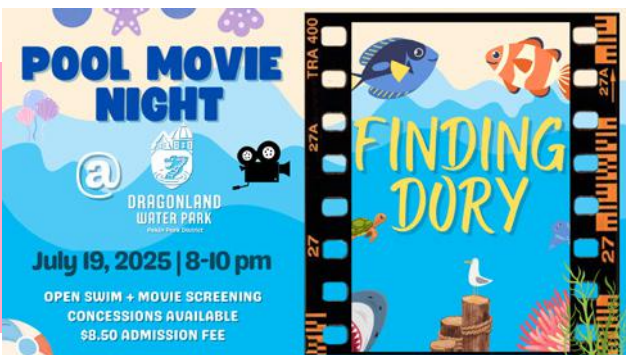
PEKIN FARMERS MARKET

Dates: Thursdays, June 5 - Aug. 28, & October 16

Times: 3:30 p.m. - 6:30 p.m.

Location: Miller Center Parking Lot

Free to attend! Bring the family and enjoy the entertainment, food, crafts, and more while you shop locally and support Pekin. Each week brings the familiar favorites and a few different delights. So be sure to come back each week! Further details on dates and how to become a vendor or sponsor can be found on page 10.



FINDING DORY MOVIE NIGHT @ DRAGONLAND

Join us for a special movie night at Dragonland on Saturday, July 19th from 8-10pm. Enjoy an evening swim while watching the family-friendly film 'Finding Dory' on the big screen. Concessions will be available throughout the event. Admission is \$8.50. We look forward to seeing you there for a memorable summer evening!

<https://www.pekinparkdistrict.org/facilities/dragonland/>

PEKIN PARK FOUNDATION



The Pekin Park Foundation is a 501(c)(3) not for profit charitable organization. Its mission is to provide a means by which park supporters can help improve and beautify our parks and expand participation in activities and programs through a well-funded Gift Program and long-term sustaining Endowment Program. By having this funding mechanism in place to meet future needs and enhancements, the park will continue to serve as the cherished community icon that it has become. It also provides a means to leave a lasting legacy to be enjoyed by future generations of park users.

THE PEKIN PARK FOUNDATION:

Provides funding and acquisition assistance and in-kind donations for purchasing, developing, promoting and maintaining parks, land, buildings, facilities, equipment, supplies, activities and programs for the Pekin Park District.

Promotes programs that serve the purposes and objectives of the Foundation, including endowment, gifting, sponsorship and volunteerism.

Promotes other activities and developments for the benefit of the Pekin Park District.

Compliments and enhances, and does not conflict with the activities of the Pekin Park District, a unit of

local government.

Maintains a close working relationship with the Pekin Park District so as not to in any way diminish the power and authority of the Pekin Park District in performing its mission of working with the community to preserve and enhance recreational opportunities, open space resources and wildlife protection.

Engages in other activities related to the Foundation's specific objectives and purposes.

HOW YOU CAN HELP:

Various gifting opportunities can provide maintenance, scholarships, enhancements, improvements, recognitions, and memorials. The Pekin Park Foundation will assure your anonymity in your gift or bequest, or publicly recognize you or your family if desired. Gifts to the Foundation are tax deductible.

For additional information, contact Cameron Bettin at (309) 353-4328 or cbettin@pekinparkdistrict.org or visit www.pekinparkfoundation.org/donate to view the various ways you can support the Pekin Park Foundation.






Terri Gambetti Scholarship Fund

Taking time for recreation is important to everyone's health physically, socially, and mentally. The Pekin Park District recognizes this and understands financial assistance may be required for some individuals to participate in Park District programs. To provide equal access to Park District programs regardless of ability to pay, The Terri Gambetti Scholarship Fund has been established by the Pekin Park Foundation for qualified Pekin residents to ensure everyone can experience the healthy benefits of participation in recreation programs. Eligibility is based upon family size and income level. Awards are made without regard to race, religion, age, disability, or national origin. Scholarship application packets with all the eligibility guidelines and instructions can be picked up at the Recreation Office inside Veterans Memorial Arena, or downloaded from our website.



- Financial assistance towards registration fees
- Provides equal access to Park District programming regardless of ability to pay
- Free Application Process
- Recreation benefits everyone's physical, social, & mental health

Contact

 (309) 347-7275

 @ppdrecreation

 recreation@pekinparkdistrict.org

 www.pekinparkdistrict.org/scholarships





MARKET DETAILS:

Dates: Thursdays, June 5 - Aug. 28, Oct. 16
Times: 3:30 p.m. - 6:30 p.m.
Locations: Miller Center Parking Lot, located at 551 South 14th Street, Pekin, IL *(moved inside if inclement weather)*
What: Entertainment, Food Trucks, and Vendors

ABOUT THE MARKET:

The Pekin Farmers Market is not just a marketplace; it's a celebration of community, agriculture and local entrepreneurship. We are so proud to continue providing a platform for local vendors to showcase their goods and for the community to come together in a vibrant, welcoming environment

BECOME A VENDOR:

The Pekin Farmers Market Committee would like to invite you to be a vendor this 2025 season. We are excited to share the mission to make fresh produce and local goods available to residents of Pekin. Vendors that are interested in participating in the 2025 Pekin Farmers Market are encouraged to submit completed applications and forms. The fee includes 18' x 18' (two parking stalls) space for \$20/week or \$140 for the entire market season. Seasonal vendors will be given the choice of vendor placement reserved throughout the season. Visit the online Pekin Farmers Market Application for rules, regulations, more details. **Scan this QR Code to submit your vendor or sponsorship application** or visit: <https://www.pekinparkdistrict.org/activities-programs/pekin-farmers-market/>

VENDOR & SPONSOR
REGISTRATION



PUBLIC ATTENDANCE:

Free to attend! Bring the family and enjoy the entertainment, food, crafts, and more while you shop locally and support Pekin. Each week brings the familiar favorites and a few different delights. So be sure to come back each week!

BETTER EVERY YEAR:

Last year, the fourth season showed significant advancements since our first year. Last year's 14-week season included 2 fall markets (1 market held indoors), 11 sponsors plus the City of Pekin, an expansion in vendor spaces to accommodate the 57 unique vendors, 1,200 free bags and farmers market merchandise handed to patrons, 238,000+ people reached via social media ad campaign with over 2,400 Facebook page followers, and live, local entertainment with John Wahl and Lauren Fitzanko. It has been encouraging to see it grow year over year and we are excited to return for a 5th year at the Pekin Park District Miller Center parking lot, located at 551 South 14th Street, Pekin and overlooking Pekin's iconic Mineral Springs Park Pavilion and Lagoon.

For more information about Pekin Farmers Market, contact:
Alisha Dault
(309) 353-5812
adault@pekinparkdistrict.org



BRINGING A PERFORMING ARTS VENUE TO PEKIN

The idea of a dedicated Performing Arts Venue (PAV) in Pekin has been discussed for years. However, it gained urgency when the Showmobile, previously used for performances by the Pekin Park Concert Band and other groups, became unsafe and unusable.

Around ten years ago, members of the Concert Band approached the Park District about constructing a permanent performance space. They were inspired by Morton's bandshell project and believed a similar venue could benefit Pekin. When the Showmobile became unusable in 2022, the Concert Band members once again brought the idea to the Park District. This time, the Park Board and the Pekin Park Foundation Board both gave their approval.

The Role of the Pekin Park Foundation

The Pekin Park Foundation played a crucial role in making the project possible. As a tax-exempt organization, it provided a financial structure to collect donations and manage funds. To further show its support, the Foundation also made a financial commitment to the project.

Planning and Fundraising

With approval secured, a committee of about sixteen dedicated volunteers began working on the project. Their tasks included selecting a location within Mineral Springs Park, designing the venue, estimating costs, choosing contractors, and planning fundraising efforts. These volunteers were all active members of the community, with backgrounds in fine arts and local business.



Three potential sites were considered: the riverfront, a spot along Broadway Road in Mineral Springs Park, and an area next to the dugout parking lot across from the Pavilion. Ultimately, the third location was chosen, and the process of requesting proposals from contractors began. The initial fundraising goal was set at \$1.25 million.

In June 2023, the fundraising campaign had a soft launch. Friends In Harmony kicked things off with a \$5,000 donation, followed by a \$50,000 contribution from Advanced Medical Transport. In late November 2023, a major donor stepped forward, offering a \$500,000 pledge on the condition that the venue be named after Steven O. Skinner, who served as director of the Municipal/Park Band for over 30 years. So far, \$250,000 of that pledge has been received.

Construction and Future Plans

Thanks to these generous contributions, construction began in the spring of 2024. With some in-kind donations helping offset costs, the overall project goal was revised to \$1.02 million.

Looking ahead, there is still work to be done. About \$250,000 is still needed to fully fund the venue. However, thanks to the backing of the Pekin Park Foundation, the PAV is on track for the first Pekin Park Concert Band performance of the season on June 22, 2025.

How You Can Help

Fundraising tends to follow a pattern: the first third of donations come easily, the second third presents more of a challenge, and the final portion—where we are now—is always the hardest. We still need your support to bring this vision to life!

To make a donation or learn more about this exciting project, please visit www.pekinparkfoundation.org or scan the adjacent QR code.

Together, we can create a lasting cultural landmark for our community!



COMMUNITY EVENTS & PROGRAMS



BUNNY HOP BREAKFAST & EGG HUNT

Hop on out to Mineral Springs Park for our Egg Hunt. A delicious breakfast of sausage and pancakes will be served 8:30 a.m. - 10:15 a.m. in the Pavilion. The Easter Bunny will be waiting to see you! No registration necessary. Egg Hunt Age groups are as FOLLOWS:

- 4 & under at 9:15 a.m.
- 5 - 7 year olds at 9:45 a.m.
- 8 - 10 years old at 10:15 a.m.

Date: Saturday, April 12

Time: 8:30 a.m. - 10:45 a.m.

Location: Mineral Springs Park near the Pavilion

Cost: \$6 per person for breakfast / Egg Hunt is Free

MILITARY APPRECIATION DAY

Active duty military personnel, veterans, and their families are invited to enjoy various Mineral Springs Park Facilities for free.

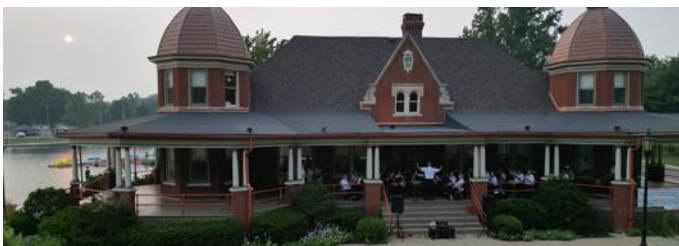
Date: Sunday, July 13, 2024

Locations:

DragonLand Water Park: Noon to 5 p.m.

Magic Dragon Mini Golf: Noon to 9 p.m.

Boating on the Lagoon: 11 a.m. to dusk



PEKIN PARK CONCERT BAND

This will be the 98th summer season for the Pekin Park Concert Band playing concerts at the park.

Dates: June 22, 29 | July 6, 13, 20, 27 | August 3

Location: The new Performing Arts Venue at Mineral Springs Park

(Concert will be moved inside to Miller Center if inclement weather occurs)

Time: 6:30 p.m. - 8:00 p.m.

Cost: Free

UNIVERSITY OF ILLINOIS EXTENSION 4-H FULTON-MASON-PEORIA-TAZEWELL UNIT

The annual 4-H Fair is a family-friendly fair with interactive activities for everyone! Find us on Facebook: Tazewell County 4-H Veterans Memorial Fair Association.

Dates: July 28 - 30

Location: Mineral Springs Park

Cost: Free

LARRY'S CASTING KIDS - FISHING DERBY

Sponsored by the Pekin Park Foundation

Join us for a day of fishing at the beautiful Mineral Springs Park Lagoon! All those who pre-register will receive their own Larry's Casting Kids t-shirt. The fishing derby will supply awards, poles, bait, and prizes is on Saturday. Participants under 14 will need an adult buddy (with a fishing license) to make a two-person team. All participants 16 or older must have a valid Illinois Fishing License. Pre-registration is required. **Registration must be completed online or received in the recreation office at Veterans Memorial Arena by July 11 at 5 p.m.**

Dates: Saturday, August 16

Times: 8:00 a.m. - 11:00 a.m.

Online Registration

Opens May 1st

Location:

Mineral Springs Park Lagoon /

Check in at Miller Center

Cost: Free



am.lol/p/kwu1SRy





PARTY AT THE PAV

Party at the Performing Arts Venue (PAV) is a family friendly series of events planned throughout the summer featuring live music, food trucks, and a bar serving beer and wine. The PAV and adjacent grassy area will create an outdoor beer garden overlooking the iconic scenery of Mineral Springs Park for the perfect place to unwind at the end of the busy work week. Drinks start at \$5. Bring your own lawn chair. Event details are subject to change due to weather.

Dates: Saturday, June 7 - Grand Opening Celebration
(Sponsored by the Pekin Park Foundation)
 Friday, July 25

Time: 5 p.m. - 8:30 p.m.

Location: Mineral Springs Performing Arts Venue

Cost: FREE



ROTTEN EGG HUNT

An Easter egg hunt FOR ADULTS! Held at Parkview golf course, you will be searching for Easter eggs that contain prizes aimed at adults: Gift Certificates, drink chips, candy, and more. Get your friends together and enjoy an evening of fun and fellowship.

Date: Friday, April 25th

Time: 5:30 p.m.

Location: Parkview Golf Course

Cost: \$30/participant

CREATIVE CREW ART CLUB

Come learn a new hobby. Each month we explore a different way to look at art so you are bound to find a new way to explore your creativity. Classes are open to those 10 years old and above (yes even adults!). Our instructors are very creative and cannot wait to meet you!

Art questions? Contact: Andrew at (309) 201-4006 | arichey@pekinparkdistrict.org.

Location: Veterans Memorial Arena

Date/Time: Tuesdays: 7 – 8 p.m.

Cost: \$65 R/\$68 NR per 4-week session (or)
 \$18 R/\$21 NR per class drop-in

Monthly Art Club themes:

March – Glass Art

April – Recycled Art

***May – Messy Art**

*Meet at 4-H Shelter for the month of May

Note: We will not meet on any 5th Tuesday of a month.



ROOTS TO HARVEST: A BEGINNER'S GUIDE TO GARDENING

Start your gardening journey with these beginner-friendly classes that covers everything from soil health to plant care. Learn how to choose the right plants, water efficiently, and manage common garden challenges. Whether you're starting small or planning a larger garden, this course will give you the tools to grow successfully. Classes will be taught by Jason Vogel of Illinois Home Gardening Alliance.

Location: Veterans Memorial Arena Classroom & Learning Garden

Time: 9 - 10:30 a.m. (hour long classes followed by 30 min. Q&A)

Dates: April 12^(a), 26^(b) | May 3^(c), 10^(d), 31^(e) | Future^(f)

Cost: \$20 per class*

Class Calendar Topics

^(a)The Ultimate Raised Bed: Built for Productivity

^(b)Composting Made Easy: Build a Johnson-Su Bioreactor

^(c)Testing & Building Healthy Soil

^(d)Cultivating Success: Biological Inoculation in Seed Starting and Transplanting (Mother's Day Special, bring aguest for free)

^(e)Smart Watering & Mulching Strategies

^(f)Check online for more details on all 12 classes

* Multi-class discounts available: 25% off for five classes or 37.5% off for all twelve classes.

(Registrations must occur in same checkout for discount to apply)

KIDS SPORTS & ACTIVITIES

From team sports like tee ball and soccer, to learning archery, horseback riding, dance, tumble, and cheer, Pekin Park District has many activities to keep your kids moving and active this summer. **Register online at pekinparkdistrict.org or stop by the Recreation Office at Veterans Memorial Arena.**

Questions about youth sports & activities? Contact JJ Tassart at jtassart@pekinparkdistrict.org or call (309) 201-4007. **For dance, tumble, and cheer:** Contact Andrew Richey at arichey@pekinparkdistrict.org or call (309) 201-4008.



CARLY S.

YOUTH SOCCER

Emphasizing fun, learning and skill development, this six-week program will practice one night a week and play games on Saturday mornings. The number of players on a team are reduced to make sure each player receives the maximum amount of playtime and contact with the ball; each player will play at least half of each game.

Games start with a 15-minute warm-up followed by 45 minutes of play officiated by volunteer coaches on the field to emphasize skill development. Team color T-shirts will be provided. **Shin guards are required.**

Register by choosing a practice night according to child's age on April 8, 2025. Practice times will be at 5:30 or 6:30pm on registered night and games will be on

Saturday mornings between 9:00am and 12:00pm. The last few weeks of the season, practice times may include games versus other teams registered on the same practice night.

What to Bring? We recommend you bring an age-appropriate ball, shin guards, and water to each practice.

Dates: Weeks of April 7 through May 17

Location: PPD Sports Complex on Koch and Fifth Street

Cost: \$65 R/\$70 NR

Registration Deadline: March 23

TEE BALL

The co-rec tee ball instructional league is operated with volunteer coaches stressing sportsmanship and early skill development. Teams practice one night a week and play games on Saturday mornings. Practices and games are played using safety baseballs. Each player will receive a team color hat and T-shirt. Players provide their own glove.



JULIE S.

Register by choosing a practice night according to the child's age as of June 1, 2025. Practice times will be either 5:30pm or 6:30pm on registered night and games will be on Saturday mornings between 9:00am and 11:00am. Limited spots available! Sign up early to confirm your spot!

Dates: Weeks of May 27 through July 5

Location: Pekin Park District Sports Complex on Koch and Fifth Street

Cost: \$65 R/\$70 NR

Registration Deadline: May 12

VOLUNTEERS NEEDED

Be a parent coach! We are always in need of volunteers from soccer and tee ball coaches to swim meets or special events. We provide the equipment and resources, you just volunteer! Volunteers are required to fill out an employment/volunteer application and a background check will be performed. Copies of the application can be found online at pekinparkdistrict.org/contact/jobs. Apply online now at the provided link of by scanning this QR code with your camera app:



DANCE, TUMBLE & CHEER

Join the PPD Tumble, Cheer, and Dance Family for loads of skill development, learning, and fun! Classes are held at Veterans Memorial Arena. Dance, tumble and cheer classes are available for children ages 3 and up. **Summer classes start the week of May 12! Look to sign up for our Summer Cheer Camp as well! Go to pekinparkdistrict.org for the full class schedule.**

PPD Dance

Summer is a great time to try something new or get some extra practice in! All classes will work on a variety of dance styles including ballet, jazz, and hip-hop. Each session consists of five classes. For specific times and information, please contact the Recreation Office or visit our website.

Day: Mondays (no classes on Memorial Day)

Cost: \$70 R/\$75 NR

- Pre-K Ballet
- Ballet #1
- Jazz/Hip-Hop

Time to Tumble!

Whether your child is new to tumbling or you are simply looking for a program to keep your child's tumbling skills sharp, summer is the perfect time to participate in tumbling classes. These five-class sessions focus on conditioning and skills of all levels. Participants should wear comfortable clothing, nothing extremely baggy, hair pulled back and jazz style dance shoes or go barefoot. For specific times and information, please contact the Recreation Office or visit our website.

Day: Mondays & Tuesdays (no classes on Memorial Day)

Cost: \$70 R/\$75 NR

- Tumble Tykes #1
- Tumble Tykes #2
- Tumble Level ½
- Tumble Level ¾



DESTINY C.

Questions about Dance, Tumble, & Cheer?
Contact Andrew Richey at 309.201.4006 or
arichey@pekinparkdistrict.org



LINZEE D.

Go to pekinparkdistrict.org for the most up-to-date schedule and registration information.

CHEER!

Here is a chance for your child to try cheer or to work on advancing their cheer skills! Summer cheer classes are separated by age into three separate groups. For those trying out for cheerleading in the fall, Advance Cheer will provide the extra practice needed to sharpen skills for tryouts. No uniforms are needed and no demos will be done over the summer. Cheer, stunting and tumbling skills will all be covered during each five-class session. Participants should wear comfortable clothing with stretch and tennis shoes to tumble in (no baggy clothing). Hair should be pulled back and no jewelry should be worn.

Day: Wednesdays

Cost: \$70 R/\$75 NR

- Mini-Cheer (ages 3-5)
- Junior Cheer (ages 5+)
- Elite Cheer (Must qualify from Junior Class)



ERICA B.

SWIM TEAM

If you are looking to compete within the local area or looking to build your skills the Pekin Park Water Dragons are here for you! Whether competitive or non-competitive our swimmers have the choice to take part in weekly practices and official meets. Practices will focus on overall refinement of breathing techniques, form, and overall fitness! Compete when you're ready; the team will attend swim meets in the surrounding area and will be mostly scheduled for Tuesdays and Thursday evenings. An informational meeting will be held at Pekin Veterans Memorial Arena time and date TBD. ***This year the High School pool will be under maintenance and all practices will be held at Dragonland Pool. Practice will be susceptible to weather conditions.***

Dates: May 27 - July 26

Practices: Monday-Thursday

Meet Schedule: TBA *(Dependent on Districts 303 & 108 schedules)*

Location: Pekin Community High School Pool

Cost: \$115 R/\$120 NR

Minimum Skill Requirements

Competitive and noncompetitive swimmers must be able to comfortably swim with their face in the water for 25 yards.

MERIT BADGE COACHING CLASSES

This summer we will be offering Lifesaving, Fishing, and Geocaching merit badges for Scouting. Merit badges will be \$15 each if signed up for more than 1 merit badge per season or \$20 for a single merit badge. Watch socials and emails for more info.



PEKIN PARK DISTRICT

ARCHERY LESSONS

Archery is a Sport and hobby! Pekin Archery Club members will teach all aspects of archery including proper safety, terminology, the parts of a bow and arrow and targets. For ages 10 years through adult. Those participants less than 16 years old, please bring along your mom or dad. All archery equipment provided. Advance registration required. Limited to 12 participants per session. **Archery questions? Contact: Andrew at (309) 201-4006 | arichey@pekinparkdistrict.org.**



SPRING SESSION

Days: Tuesday

Dates: June 3, 10, 17, 24

Times: 6 p.m. to 7 p.m.

Cost: \$35

SUMMER SESSION

Days: Tuesday

Dates: Aug. 5, 12, 19, 26

Times: 6 p.m. to 7 p.m.

Cost: \$35

PEKIN ARCHERS, INC.

Located off of Rt. 98, in Pekin Park District's Dirksen Park. Pekin Archery Range offers a variety of ways to enjoy this great sport and hone bow-hunting skills. Pekin Archers are dedicated to promoting good sportsmanship and perpetuating the sport of archery. The range boasts a 4-star NFAA range and is home to many accomplished archers. Pekin Archers and Pekin Park District have a partnership on the use of this land for a range. Safety is a priority and thus an experienced archer must be on sight when the range is in use. A part of this relationship allows residents of our community to use the range to shoot a bow and arrow into a target. Another part of this partnership includes Archers from the Club teaching group archery lessons to those registered through the Pekin Park District classes in the Spring and Summer sessions.

Becoming a member of the club is easy. Just visit Pekin Bass and Bow on Derby St. in Pekin, or Presley's Outdoor in Bartonville, IL. The membership fee is just \$40 for your family per year (March - February). You can attend Club work days at the range for a reduced membership fee. They host 3D shoots from March through Sept., ASA State Qualifiers and Championships, and field and target shoots. Please note; broadhead bows are not allowed in the park as they cause damage to targets. The range is located in Pekin Park District's Dirksen Park, on Rt. 98, just one mile east of Parkway Drive. If you'd like to visit the range, contact Nancy Kerley, Pekin Archers President, at 309-241-2283

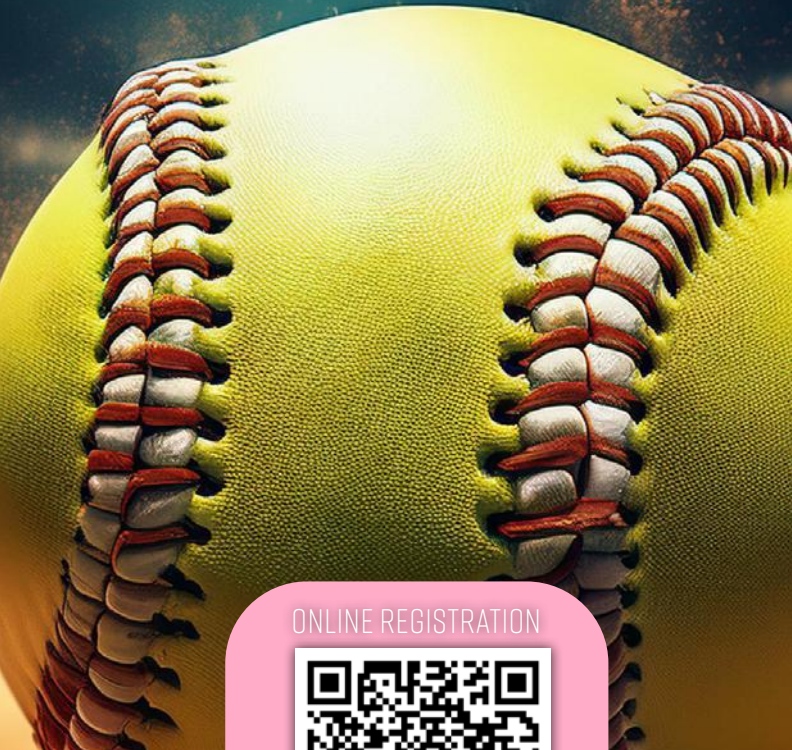
Website: www.pekinarchers.org

Email: pekinarchers1@gmail.com

Facebook: Pekin Archers

Address: 2501 Edgewater Dr. Pekin, IL

ADULT SOFTBALL LEAGUES STARTING APRIL 28



ONLINE REGISTRATION



[REBRAND.LY/IF4112](https://rebrand.ly/IF4112)

REGISTER NOW!

MINERAL SPRINGS DIAMONDS #1 & #2

REGISTRATION:

\$295 per team

\$35 per player before play

OFFERING SEVERAL LEAGUES: CHURCH,
INDUSTRIAL, LADIES, AND CO-REC

For more information visit pekinparkdistrict.org or
contact JJ Tassart at jtassart@pekinparkdistrict.org
or call (309) 201-4007



PEKIN PARK
DISTRICT

SAND VOLLEYBALL TOURNAMENT FUNDRAISER (THIS FALL)



This SVT Fundraiser benefiting special needs programming with Illinois River Valley Special Recreation Association (IRVSRA). Play for fun and trophies, play for money, play for a purpose.

Date: TBA (Fall: Sept. or Oct.)

Time: 8:00 a.m. - Elimination

Location: Mineral Springs Park Sand Volleyball Pits

Cost: \$30 per player

Two Divisions (max 12 teams per division)

Recreation – Co-Ed 6's (at least 2 women on the court at all times)

Competitive – Co-Ed 4's (at least 1 woman on the court at all times)

Format

Pool play & Single Elimination Tournament. Must be at least 13 years old with a guardian's signature.

Prizes

One trophy will be awarded to the 1st, 2nd, and 3rd place recreation teams. Cash prizes will be awarded to the top four competitive teams: \$300** for 1st, \$200** for 2nd, \$100** for 3rd, and \$75 for 4th.

** Prize money based on 10 team entries. Prize money will increase or decrease based on entries.

For more info or to receive updates as dates and times are determined and registration links open, please email shelly@irvsra.org.



ABOUT MEMBERSHIP RATES

- NO ENROLLMENT FEE.
- Monthly payments via EFT from checking/savings or debit/credit card only.
- Hourly tennis court reservations are extra. Please see the front desk attendant for more information.

GROUP FITNESS CLASSES

We offer a class for everyone — all included with your membership! We make fitness fun no matter your current level of fitness and work hard to motivate you to succeed. If you are not a member, you can still join in! Grab a punch card or pay to drop-in for any class. Check out parksidefitnesspekin.com for a class schedule!

PERSONAL TRAINING



With James Welton

ACE Certified Personal Trainer, Precision Nutrition Level 1, and Mike Boyle Certified Functional Strength Coach. James, is available to help build your body and

bring you into the best shape of your life.



With Brooks Flick

NASM Certified Personal Trainer. Brooks is a dedicated fitness professional with a passion for weightlifting and personal

health.

PICKLEBALL

Join the Pickleball Revolution at Parkside Fitness! Pickleball is a racquet sport that combines elements of badminton, tennis and table tennis, and is played on an indoor or outdoor court that is approximately half the size of a tennis court.

Cost: FREE to members. Non-members: \$5/drop-in or \$45/punch card (10 visits).

Pickleball is offered:

- Mondays: 6 - 11 a.m. & 1 - 3 p.m.
- Tuesdays: 1 - 3 p.m.
- Wednesdays: 6 - 11 a.m. & 1 - 3 p.m.
- Thursdays: 1 - 3 p.m.
- Fridays: 6 - 11 a.m. & 1 - 3 p.m.
- Saturdays: 7 - 11 a.m.
- Sundays: 4 - 6 p.m.



Private play court rentals are available for pickleball groups outside of open play time. Contact us today.

Parkside Fitness has everything Pekin families need to reach their health and fitness goals. If you're a beginner or an elite athlete, we have world-class solutions and trainers dedicated to helping you achieve the results you're looking for. Be our guest and discover our extensive equipment options, dynamic group fitness classes, adult and youth tennis programs, pickleball, racquetball/wallyball, personal and group training, massage therapy, plus a wide range of athletic programs for every fitness level and interest.

A Pekin Park District Facility

300 Red Bud Drive
Pekin, IL 61554
(309) 347-6644
parksidefitnesspekin.com

Hours

Monday – Thursday: 5 a.m. – 10 p.m.
Friday: 5 a.m. – 8 p.m.
Saturday: 6:30 a.m. – 8 p.m.
Sunday: 7:30 a.m. – 8 p.m.

Manager: Keith Knox

kknox@pekinparkdistrict.org or (309) 347-3278

Member Account Coordinator:

Margaret Frazell
mfrazell@pekinparkdistrict.org or (309) 347-8601

Visit parksidefitnesspekin.com for information on all the classes and many fitness offerings available at Parkside Fitness!

MEMBERSHIP OPTIONS

RATES
STARTING
AS LOW AS
\$20/MONTH

• 4 STAR

Access to the entire facility. All group fitness classes are included as well as open pickleball, racquetball, wallyball, use of the saunas and our entire free weight, functional training, and cardio equipment areas. Guest tennis court fees still apply to 4 Star Members.

Membership Type	Annual Agreement	Month-to-Month
Junior Fitness Pass (14-18)	N/A	\$20/mo
Junior (19-22)	N/A	\$23/mo
Individual (23-64)	\$25/mo	\$30/mo
Joint	\$50/mo	\$60/mo
Family of 3	\$75/mo	\$90/mo
Family of 4+	\$90/mo	\$105/mo
Senior (65+)	\$20/mo	\$25/mo
Senior Joint (both 65+)	\$40/mo	\$50/mo

• 5 STAR

Same access to the facility and group classes as the 4-Star Membership PLUS unlimited open tennis court usage.

Membership Type	Annual Agreement	Month-to-Month
Junior (14-22)	\$54/mo	\$67/mo
Young Adult (23-28)	\$64/mo	\$84/mo
Individual (29-64)	\$73/mo	\$100/mo
Joint	\$88/mo	\$121/mo
Family of 3	\$108/mo	\$140/mo
Family of 4+	\$116/mo	\$147/mo
Senior (65+)	\$59/mo	\$87/mo
Senior Joint (both 65+)	\$75/mo	\$113/mo

• CORPORATE & BUSINESS MEMBERSHIP PLANS

Same access to the facility and group classes as the 4-Star Membership. Guest tennis court fees still apply.

Membership Type	Annual Agreement	Month-to-Month
C&B Individual	\$20/mo	\$25/mo
C&B Joint	\$40/mo	\$50/mo
C&B Family of 3	\$60/mo	\$75/mo
C&B Family of 4+	\$72/mo	\$90/mo

ANNUAL FEES

Membership agreements require an annual \$40 fee. This fee renews each year in February for Annual Agreements. Month-to-Month Agreements pay the annual fee on the first full month which renews that same month annually. All membership agreement types are subject to the annual fee, with the exception of two: Junior Fitness Passes & 4 Star Junior Memberships.

GUEST FEES & CHARGES

Group Fitness Punch Card: \$65/10 classes

Group Fitness Drop-In: \$8/class

Pickleball Punch Card: \$45/10 visits

Pickleball Drop-in: \$5/visit

Guest Fee: \$10/day

Tennis Court Fee: \$30/hour



TENNIS

A variety of Tennis Clinics are available at Parkside Fitness. With classes for beginners as young as 5 years old to adults, Parkside Fitness has something for every player at any level!

For the most current schedule of tennis clinics and to register, call (309) 347-6644.

TENNIS CLINIC SESSION DATES:

Session 1: June 9 to July 1 (4 weeks)

Session 2: July 7 to August 5 (5 weeks)

Fees: 4 week rates: 1-hour clinic — \$80/session
 1.5-hour clinic — \$120/session
 5 week rates: 1-hour clinic — \$100/session
 1.5-hour clinic — \$150/session
(Members receive a 10% discount)

JUNIOR TENNIS CLINICS

VOLLEY KIDS | Ages 5 – 8

Clinic will use foam balls and low compression red felt balls along with smaller racquets and nets. This age group also plays on 36' modified courts.

Monday | 5:30 p.m. – 6:30 p.m.

RALLY KIDS | Ages 9 – 10

Clinic uses low-compression orange felt balls along with smaller racquets and plays on the regular net. This age group plays on 60-foot modified courts.

Monday | 6:30 p.m. – 7:30 p.m.

JR. HIGH SMASHERS | Ages 11 – 13

Clinic is for junior high students who are thinking about playing high school tennis or have taken limited clinics before.

Tuesday | 5:30 p.m. – 7:00 p.m.

ADULT TENNIS CLINIC

ADULT SKILL DRILL

Clinic is for players with limited experience who can sustain short rallies. Instruction will be directed at stroke development and refining skills in point play. The clinic features drills that will get you moving for a great workout while playing points in a fun and competitive atmosphere.

Tuesday | 7:00 p.m. – 8:30 p.m.

www.parksidefitnesspekin.com





BLAZIN' A TRAIL RIDING & BOARDING

HORSEBACK RIDING, LESSONS & CLINICS

Location:

Blazin' A Trail Riding and Boarding, Inc.
217 McNaughton Park Road
(309) 382-1268

Blazin' A Trail Riding and Boarding offers horseback riding lessons and guided trail rides through beautiful McNaughton Park. Whether you are experienced or a first-time rider, we'll take you through woods, creeks and wide-open spaces. Please dress accordingly for horseback riding — long pants and boots/shoes with a heel. Riders under 18 years of age are required to wear a riding helmet, which will be provided, or you may bring your own.

**DAY AT THE BARN
CREEK CAMP
CLINICS
SPA DAY
GUIDED TOURS
COVERED WAGON RIDES
& MORE!**



For more details, scheduling and availability, check us out on Facebook at 'Blazin' A Trail Riding and Boarding' or call (309) 382-1268



GOLF

Lick Creek & Parkview Golf Courses

Pekin Park District Director of Golf – Cory Proehl, PGA
 cproehl@pekinparkdistrict.org | (309) 346-1969



2025 GREEN FEES

WEEKDAYS	18 Holes	18 Holes	9 Holes	9 Holes
	Parkview GC	Lick Creek GC	Parkview GC	Lick Creek GC
Adult Resident	\$24	\$26	\$17	\$18
Adult Non-Resident	\$37	\$43	\$27	\$30
*Senior Resident	\$23	\$25	\$16	\$17
*Senior Non-Resident	\$33	\$38	\$25	\$28
Junior Resident	\$18	\$21	\$13	\$15
Junior Non-Resident	\$27	\$31	\$22	\$24

*Senior green fees are valid weekdays only

WEEKENDS & HOLIDAYS	18 Holes	18 Holes	9 Holes	9 Holes
	Parkview GC	Lick Creek GC	Parkview GC	Lick Creek GC
Adult Resident	\$26	\$29	\$18	\$19
Adult Non-Resident	\$39	\$45	\$29	\$32
Junior Resident	\$19	\$22	\$14	\$16
Junior Non-Resident	\$28	\$32	\$23	\$25

GOLF CART FEES

All persons must be 16 years of age with a valid driver's license to operate a golf cart.

	Parkview GC	Lick Creek GC
18-Hole ½ Cart Fee	\$19	\$20
9-Hole ½ Cart Fee	\$12	\$13
2025 Golf Cart Pass	\$1,500 Unlimited Cart Fees at Both Courses	

COUPON BOOKS

Coupon books are valid any time. Coupons may be used at both Lick Creek and Parkview Golf Courses and expire December 31 of the year issued. Unused coupons are Non-Refundable.

	15 Rounds	15 Rounds	25 Rounds	25 Rounds
	Resident	Non-Resident	Resident	Non-Resident
Adults	\$400	\$430	\$520	\$570
Seniors	\$380	\$410	\$490	\$540

GOLF RANGE PASS Golf Range Pass is good from April 1 – October 31, weather permitting.

	Single	Couple	Family
	\$275	\$375	\$475

SEASON GOLF PASSES

Season Golf Passes are valid for use at both Golf Courses from January 1 through December 31, 2024. Golf Pass payment plan is available. Pay 50% now and the last payment is due April 1.

	Resident	Non-Resident
Adults	\$745	\$825
Seniors	\$630	\$705
Junior	\$410	\$480
Junior Adult	\$525	\$565

Senior Rate: 65 years of age by June 1, 2025

Junior Rate: 22 years of age and younger

Junior Adult Rate: 23 through 28 years of age

Family Rate: When one Adult Pass and any other Pass are purchased by family members of the same household at regular price, any additional Junior Passes for qualifying family members will cost \$1 each.

ADULT GOLF CLINICS

All clinics will be held at Lick Creek Golf Course and are taught by Cory Proehl, PGA, Director of Golf.

To register, call the Golf Shop at (309) 346-0077.

Adult Clinics (Thursdays)

5 – 6 p.m. | Cost: \$20/clinic

Date	Clinic
May 1	Chipping & Pitching
May 8	Driver
May 15	Putting
May 22	Full Swing
May 29	Chipping & Pitching
June 26	Sand & Trouble Shots
July 10	Putting
July 17	Full Swing
July 24	Chipping & Pitching
July 31	Driver



THE 7TH ANNUAL



FUNKY MONKEY
SUPERINTENDENT'S REVENGE

GOLF EVENT

SATURDAY, MAY 10, 2025

Team Fee: \$300
(includes all golf fees & lunch)

Team Sponsor: \$400
(includes all golf fees, food, & sponsor sign)

Hole Sponsor: \$100
(includes sponsor sign)

Lick Creek Golf Course
2210 N. Parkway Drive
Pekin, IL 61554

Lunch: 12:00 - 1:00 P.M.
Shotgun Start 1:00 P.M.

Team & Sponsorship Registration Link



rebrand.ly/38c539



www.pekinparkfoundation.org

Proceeds benefit the Pekin Park Foundation's
Steve Funk Junior Golf Fund

JUNIOR GOLF PROGRAMS

If your future golfer wants to learn how to play the game of golf, there is no better place than at one of our junior golf programs offered throughout the season. Our programs aim to offer opportunities to engage in critical thinking, physical activity, socialize with peers, and most of all improve golf skills and establish solid fundamentals. With help from the Pekin Park Foundation's Steve Funk Junior Golf Fund and fundraisers like the Funky Monkey Golf Event, many of our junior programs will cost the participant less out of pocket.

JUNIOR GOLF PROGRAM REGISTRATION OPENS APRIL 1ST AT 12:00 A.M.

In-House Registration can be done at Veterans Memorial Arena or online on our website or using the links & QR Codes provided below:

JUNIOR CLINICS

Saturdays: 2 – 3 p.m. | Cost: ~~\$20~~ \$10/clinic

Date **Clinic**

May 3 Putting

May 10 Pitching & Chipping

May 17 Full Swing

May 24 Driver

May 31 Putting

July 19 Pitching & Chipping

(Maximum of 12 participants per clinic)

JUNIOR GOLF REGISTRATION



[HTTPS://RB.GY/GBIWAY](https://rb.gy/gbiway)

PEKIN JUNIOR CITY GOLF TOURNAMENT ————— 2025

Our city-wide Co-Rec golf tournament is open to all genders and ages 18 and under. Save the date or register with the link above. Tee times will commence at 8:00 a.m. depending upon age group.

Date: Saturday, July 5, 2025

Location: Parkview Golf Course

Fee: \$20 (*Free to registered Junior Golf Camp Participants)



***Campers will be provided a 'Coupon Code' at the end of camp. Pekin Park Foundation's Steve Funk Junior Golf Fund will cover the tournament registration fee when registering for the tournament using the provided code.**





2025 JUNIOR GOLF CAMPS

Under the direction of the Pekin Park District Golf Staff the Junior Golf Camp Program will feature instruction on full swing, short game, putting, rules and etiquette at Lick Creek Golf Course. Program will also include tee gift and snacks.

Each program level below is designed to suit the golfer at different levels. If you have a young golfer who is experienced and would benefit from more in-depth instruction, please feel free to register them at the appropriate level. Sessions can be altered after the program has begun if need be.

Each lesson will consist of a different learning area or focus. We will use developmental strategies that are designed to teach basic golf fundamentals of the game, as well as create an understanding and passion for the game of golf. Training aids may be used to enhance or demonstrate the learning process. Each camp session has a maximum of 25 participants.

Registration opens April 1st. To register, use link, or call the Pekin Park Rec. Office at (309) 347-7275.

Little Dragons (Ages 5 – 8)

No prior experience necessary. Focus on safety, basic rules, etiquette, stance, grip, putting and chipping. At the beginner level, instruction will take place at the putting green and driving range. Parents are encouraged to stay if possible.

Location: Lick Creek Golf Course

Dates: June 16 – 20; Monday – Friday

Time: 4 – 5 p.m.

Fee: ~~\$80~~** (\$40)

Big Dragons (Ages 9 – 12)

For players with some prior experience. Focus on rules, etiquette, stance, grip, swing path, course management, chipping, putting and ball striking. At this level, we will do work on the practice green and driving range, as well as course play. This is also a starting point for those who wish to play high school golf.

Location: Lick Creek Golf Course

Dates:

Session 1: June 2 – 6; Monday – Friday

Session 2: June 9 – 13; Monday – Friday

Time: 4 – 5 p.m.

Fee: ~~\$80~~** (\$40)



****50% of camp registration fees will be covered by the Pekin Park Foundation's Steve Funk Junior Golf Fund, regardless of income. So you only pay \$40!**





DRAGONLAND WATER PARK

Pekin Park District

DRAGONLAND WATER PARK, SUMMER 2024

2025 SEASON

OPEN: May 24 – August 10

Swim Hours: Noon – 5 p.m. Daily

Daily Swim Admission

Age 4 and up: \$8.50

3 and Under: Free

Family Nights *(Every Tuesday evening starting June 3)*

Tuesdays: 7:30 – 9:30 p.m.

Family of 4: \$20.00

Add-ons: \$5 each

Group Rates

Group pricing is available to groups of 12 or more.

Inquire about pricing at the front gate or the Recreation Office. For details, call (309)-347-7275

PASSES & PUNCH-CARDS

Season pass-holders gain admission to DragonLand whenever it is open to the public at no additional charge. Pass-holders may also enter the park 15 minutes before opening during Daily Swim hours. Passes may be purchased at the Recreation Office in Veterans Memorial Arena.

Season Pass Rates:

Individual: \$85

Family Pass (4): \$275

Family Pass Add-on: \$80 per person

10-Admission Punch Cards:

Cost: \$75 (Saves \$10)

CONCESSION STAND

DragonLand has a full concession stand available during business hours. Grab hot dogs, pretzels, popcorn, ice cream, candy and ice-cold Pepsi products while you're at the park. Outside beverages, food, and coolers are not allowed in DragonLand.

SAFETY & WEATHER

All flotation devices must be certified by the U.S. Coast Guard. Water wings and inflatable inner tubes are not allowed as swim aids. DragonLand has life jackets available for use free of charge.

If threatening weather or cool temperatures occur during regular business hours, DragonLand may close early. Please call (309) 226-4060 to see if we are open.

BIRTHDAY PARTIES

Please inquire about rental cost breakdowns by contacting the Recreation Office at (309) 347-7275. Birthday party information is also included on page 37.

PRIVATE RENTALS

Private rentals are also available after-hours with full stadium lighting. Call the Recreation Office at (309) 347-7275 to book.



LEARN-TO-SWIM: BEGINNERS TO ADVANCED

Our learn-to-swim program has partnered with Jeff Ellis Swimming (JES). For more than 15 years, Ellis has provided high-quality, fun and engaging ways for aquatic facility swim instructors to deliver the best in learn-to-swim programs.



Instructors will give progress reports at the end of each session. Lessons begin the week of June 6! Register early online to reserve your spot.

Cost: \$60 R/\$65 NR per session

A.M. Morning Lessons: *(2-week session of 8 classes)*

9:00 - 9:30a | 9:35 - 10:05a | 10:10 - 10:40a | 10:45 - 11:15a

Monday through Thursday

- Session 1: 6/2 – 6/12
- Session 2: 6/16 – 6/26
- Session 3: 6/30 – 7/10
- Session 4: 7/14 – 7/24

P.M. Evening Lessons: *(4-week session of 8 classes)*

Monday & Wednesday: 5:45 – 6:15p & 6:20 – 6:50p

- Session 1: 6/2 – 6/25
- Session 2: 6/30 – 7/23

Tuesday & Thursday: 5:45 – 6:15p & 6:20 – 6:50p

- Session 1: 6/3 – 6/26
- Session 2: 7/1 – 7/24

LEARN-TO-SWIM CLASS DESCRIPTIONS

The Introduction: Water Exploration & Safety (Ages 6 months to 2)

This class is an introduction to water safety and basic water skills for both parent and child. It is not a swim lesson and parents should adjust their expectations appropriately.

Preschool: I'm a Big Kid Now (Ages 3–5)

The purpose of the Preschool Level class is to help students feel comfortable in the water without the presence of mom or dad. Students will learn elementary water skills and safety tips that will stay with them throughout all swim lesson levels. Sophie the Safety Seal's Water Smart Rules are reinforced for increased aquatic safety.

Beginner: Stroke Readiness (Ages 5–11)

The Beginner Level class builds on elementary water skills and teaches students the skills needed to complete a 25-yard swim for each of the following: elementary backstroke, front crawl and backstroke. All elementary water skills are reinforced so that they become second nature to the students. All water safety rules are discussed as well.

Advanced Beginner: Stroke Development (Ages 6–12)

The Advanced Beginner class teaches students how to master stroke development and requires them to complete 50-yard swims of elementary backstroke and basic backstroke. Students are also asked to complete 25-yard swims of the breaststroke and front crawl with rhythmical breathing. We introduce scissor kick and sidestroke at this swim level too.

Intermediate/Advanced: Skill Refinement and Proficiency (Ages 6–14)

A class, depending on your experience, meant to improve upon and fine tune different swimming strokes. The baseline for a student of this class should be able to complete 50 yards of front crawl with rhythmic breathing, 75 yards of backstroke, 50 yards of breaststroke, 50 yards of sidestroke, 75 yards of elementary backstroke, and 25 yards of butterfly. Treading water and butterfly are introduced for the intermediate level.

Adult Learn to Swim: It's Never Too Late (Ages 15+)

Basic swimming and self-rescue skills are taught in a comfortable environment. The class size is designed so that every swimmer gets the attention needed to achieve swimming goals.

Go to pekinparkdistrict.org for the most up-to-date schedule and registration information.



MINERAL SPRINGS PARK FUN

Located just off Route 9 (Court Street) in the heart of Pekin, Mineral Springs Park has more than 200 acres of fun, including a skate park and half-mile Lagoon walk, fishing, bike trails, tennis courts, baseball diamonds, basketball courts, volleyball courts, picnic areas, and more.

BOATING ON THE LAGOON



Enjoy a leisurely paddle boat ride with family and friends on the iconic Mineral Springs Park Lagoon.

Open Daily: May 24 through August 10

Weekends Only: April 26 through May 24 and August 16 through September 28

Hours: 11 a.m. – dusk

Admission (30-Minute Rides)*

4 years and over: \$5

3 and under: Free

Second Ride: \$3.50 *(Current visit. No re-entry)*

MAGIC DRAGON MINI GOLF

Take on this beautifully landscaped miniature golf course located in Mineral Springs Park. Featuring 18 challenging holes, a running stream and a real caboose serving as Hole 4, this is a must-do for all ages. ADA accessible.

Open Daily:

May 24 through August 10

Monday – Saturday: Noon – 9 p.m.

Sunday: Noon – 8 p.m.

Weekends Only:

April 26 through May 24 and

August 16 through September 28

Saturday: Noon – 9 p.m.

Sunday: Noon – 8 p.m.

Admission*

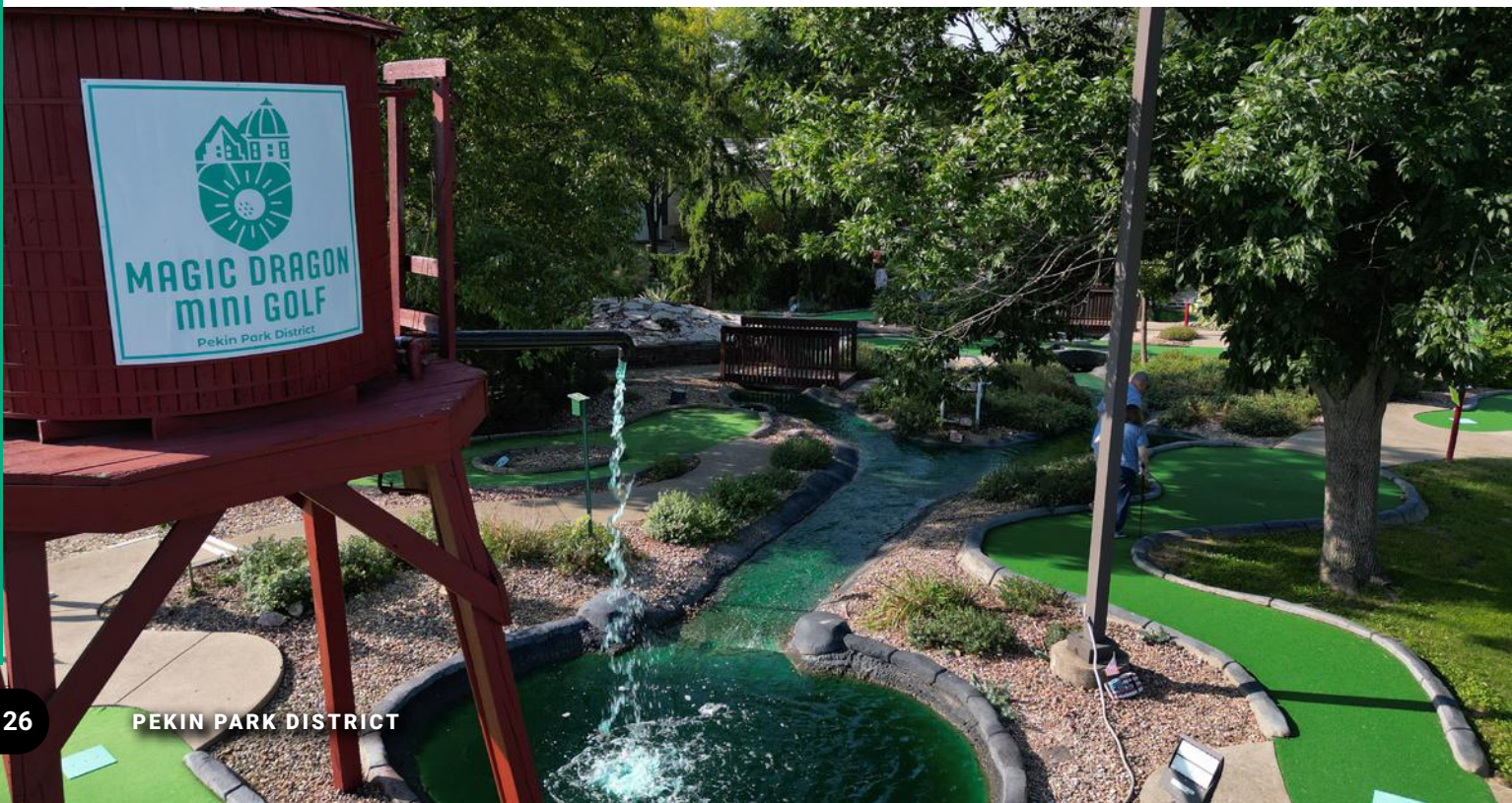
4 years and over: \$7.00

3 and under: Free

Second Round: \$4.50 *(Current visit. No re-entry)*

Private Rentals: Call (309) 347-7275 for more information.

***Reduced admission of \$4 during Community Nights at both Boating on the Lagoon & Magic Dragon Mini Golf – every Wednesday, May 24 – August 10 from 5 p.m. to close.**



NATURE FIELD TRIPS

McNaughton Park is an ideal place to discover the flora and fauna of the Illinois River Valley. In each workshop, park educators introduce key concepts tied to state learning goals, and present lessons through discussion, story-telling, show & tell, walks in the woods, highly engaging games, and arts and crafts activities. School field trip programs are available to public, private elementary, and middle schools, as well as home-school groups of 10 or more students. Field trips are offered September through May. For further information or to register, contact Andrew Richey at arichey@pekinparkdistrict.org or call (309) 201-4006

Fee: \$7.00 per child



Wild or Not? • (Grades K - 2)

Participants will learn the differences between wild and domesticated animals; compare and contrast natural environments with man-made environments; and consider appropriate interactions between humans and wildlife.

Nature All Around • (Grades K - 3)

Participants will learn that through careful observation and knowing what clues to look for, one can quickly discover a great diversity of living things. Using our senses, examining clues animals leave behind, and understanding the concept of “habitats” and what they provide will be presented through show-and-tell items, hiking, and hands-on activities.

Feasts, Famine, & Food Webs • (Grades 4-7)

Examine the relationships between predators and prey; what happens when animal populations explode and crash; what makes animal food sources unstable; and the elements of an ideal balance in these interrelationships.

Owl Pellet Discovery • (Grades 4 - 8)

Who, who, whoo ever knew that the habits of owls could be learned in examining their pellets? In this workshop, students will have the opportunity to dismantle owl pellets to discover what surprises that might be inside!

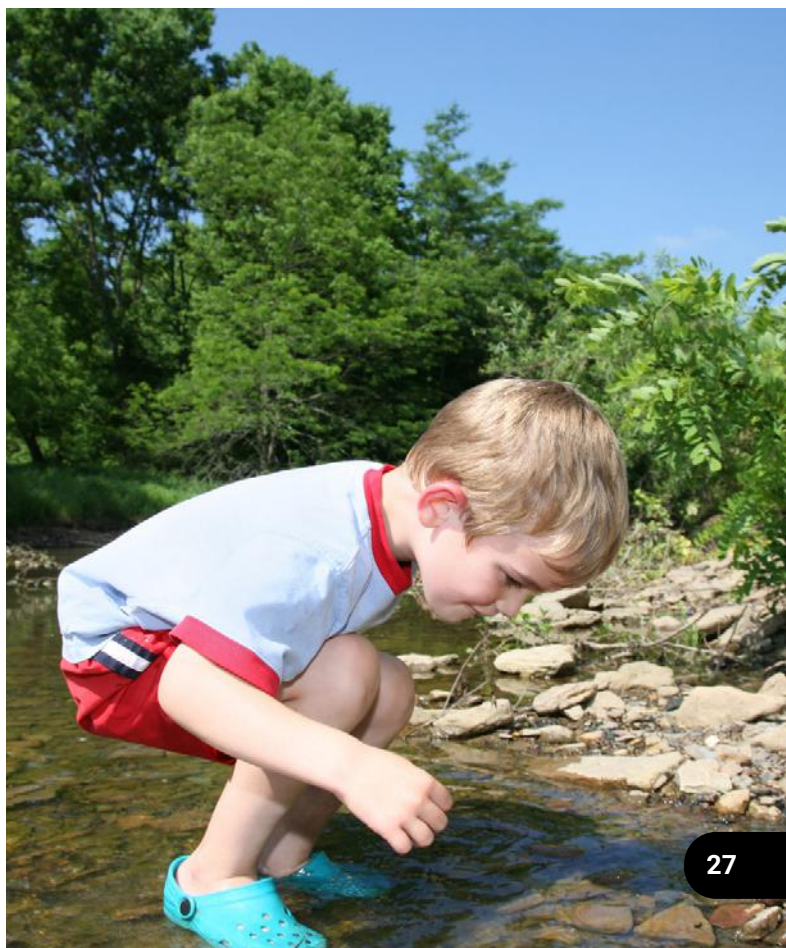
Pond Explorations • (Grades 4-up)

Water, water everywhere! Water is important for every living thing! During this program, we will look at the water cycle, talk about fresh water habitats and the creatures they support. Students will have hands-on activities that will encourage them to learn about ponds, streams, and weather permitting we will take a walk through the woods to one of nearby streams. (Children may get dirty).

End of the Year Rewards Days • All Ages

Teachers! Are you looking for a way to reward your students for their year of hard work? Rewards Day programs are 3 hours of activities such as, a hike in the woods, team challenge games, nature art, mad scientist experiments, and simple survival skills. Pack a sack lunch.

Field Trips may also be brought to your space for an additional fee.



DAY CAMPS

SPRING ADVENTURES (AGES 6-13)

Location: Veterans Memorial Arena

Camp Hours: 7 a.m. – 5:30 p.m.

Spring is a time for some new adventures. Join us during spring break to try something new or even revisit something you haven't done in a while. Make some memories and have some fun while you're at it.



CARLY S.

SPRING ADVENTURES

Cost: \$210(R) / \$228(NR) for 6 days or \$175(R) / \$190(NR) for 5 days or \$38(R) / \$41(NR) per day

DAY	DATES	THEME & DESCRIPTION
1	April 14	Spring into Camp!
2	April 15	Wild and Wacky Day (Mad scientist and crazy Olympics)
3	April 16	Celebrations! Today is everyone's birthday!
4	April 17	Around the World (Try new games and foods from around the world)
5	April 18	Be Famous! Field Trip to the Movies
6	April 21	A day in the Park

Questions? Contact Andrew Richey at arichey@pekinparkdistrict.org or call (309) 201-4006.

I.R.V.S.R.A. SPECIAL NEEDS SUNSHINE CAMP (AGES 6-17 & 18-99)

Location: IRVSRA Rec. Center

Camp Hours: 7 a.m. – 5:30 p.m.

Staffed with a higher ratio, campers will have a safe and fun place to be among their peers enjoying outdoor activities, indoor arts & crafts, games, movies, dance parties, and weekly trips to DragonLand Water Park. Breakfast and snack provided, campers must bring a sack lunch daily.



SUNSHINE CAMP

Cost: \$180(R) / \$200(NR) for 5 day weeks OR \$144(R) / \$160(NR) for 4 day weeks OR \$40.50(R) 45(NR)/day

9 a.m. - 3 p.m. mid-day options are available at a lower rate.

WEEKS	DATES	DESCRIPTION
10 (M-F) (Non-holidays)	June 2 - Aug. 11	Themes & Activities Vary Week to Week

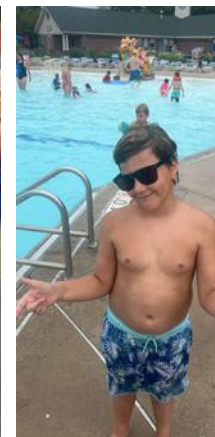
Questions? Contact Shawna at shawna@irvsra.org or call (309) 201-4005. See page 30 for more info about IRVSRA.

SUMMER DAY CAMP ADVENTURES IN MINERAL SPRINGS PARK (AGES 6-13)

Location: Veterans Memorial Arena

Camp Hours: 6:30 a.m. – 6 p.m.

Summer is a time to go on an adventure to explore places new and old. Our trained staff take our campers on an adventure each day of the summer with games, crafts, field trips, 2 trips a week to DragonLand, meeting new people, and making lifetime memories. Come spend your summer with us!



ADVENTURE DAY CAMPS

Cost: \$38 per day (NR add \$3 per day)

WEEK	START DATE	WEEKLY THEME	FULL WEEK PRICE
1	June 2	Super Hero	\$175 R / \$190 NR
2	June 9	Back to the Future	\$175 R / \$190 NR
3	June 16	Safari Week	\$175 R / \$190 NR
4	June 23	Making Waves	\$175 R / \$190 NR
5**	June 30	Holiday Adventures	\$140 R / \$152 NR
6	July 7	All-Star Week	\$175 R / \$190 NR
7	July 14	Mad Scientist	\$175 R / \$190 NR
8	July 21	Camp's Got Talent	\$175 R / \$190 NR
9	July 28	Wild West Week	\$175 R / \$190 NR
10	August 4	Color Wars	\$175 R / \$190 NR
11	August 11	Camp Spirit	\$175 R / \$190 NR

****Shortened weeks. Price is reduced.**

Depending on District 108 and 303 schedules there may be a week 12 if staff availability allows.

Camp Facts:

Camp Hours are 6:30 am to 6 pm. Camp is held at the Veteran's Memorial Arena located inside the Mineral Springs Park. We provide Breakfast and Afternoon Snack. We ask that you send a lunch daily along with a backpack with extra clothes and items needed daily. After the first child there is a 10% discount for each additional child. Fees above include admissions to DragonLand and Listed Field Trips. The older campers may go on a couple extended trips that will have additional cost. Concessions/Gift Shop at locations will be an extra cost to you. All camp staff are trained in CPR and First Aid by the American Heart Association Standards. We also train in safety procedures such as weather, fire, and other emergency situations. All camp staff undergo a background check through the Park District, State and FBI.

Camp Refund Policy: (this refund policy is exclusive to day camps and may be different from other park programs)

- Refunds must be requested no less than 7 days prior to the requested dates.
- Refunds cannot be given for past days or weeks missed.
- Refunds cannot be given in cases of illness
- Refunds of single days when registered for a whole week cannot be given.
- Approved refunds will be given as a credit back to credit card used for payment or a check from Pekin Park District. Refunds may take 7-10 days to be received.



ILLINOIS RIVER VALLEY SPECIAL RECREATION ASSOCIATION

IRVSRA.ORG

All Pekin Park activities and programs are open to individuals with special needs. We are pleased to comply with the Americans with Disabilities Act (ADA) regulations to make reasonable accommodations for participation, made on an individual basis. We provide reasonable accommodations to all participants, as needed. Pekin Park District must be notified 2 weeks prior to the individual's start date.

In addition to making any reasonable adaptive inclusions into all our Pekin Park activities, we offer additional special needs specific programs through our association with the Illinois River Valley Special Recreation Association (IRVSRA).

IRVSRA is a cooperative extension of Pekin and Fon du Lac Park Districts to provide recreational programs and leisure services for individuals with developmental disabilities. These integrated and specialized programs are available for both residents and nonresidents with special needs.

It is our pleasure to provide these athletic and social settings, through IRVSRA, to the special needs population within the Tazewell County area. IRVSRA publishes a seasonal brochure quarterly containing all their recreational programs and offerings. Some of the programs like Special Olympic Sports have age requirements while other programs like dances and parties are open to all age groups.

The IRVSRA Recreation Staff handles all IRVSRA registration, program and activity related questions. They are available to assist and advise participants, parents or caregivers to assure a comfortable, quality recreational experience. Stop by their office during business hours or visit irvsra.org anytime to connect and stay up to date.



IRVSRA.ORG specializes in:

- Special Olympic Team/Individual Sports
- Parties, Dances, & Socials
- Live Shows & Movie outings
- Classes & Crafts
- Clubs & Service Projects
- Group Outings & Special Events
- Day camps for spring, summer, winter & holiday breaks

IRVSRA Contact Info:

IRVSRA Recreational Center
1715 Dragon Drive, Pekin, IL 61554
Office Hours: Monday – Friday | 10 a.m. – 5:00 p.m.
Call or Text: (309) 201-4005 | Fax: (309) 353-1787
Email: info@irvsra.org



SUBMIT YOUR PEKIN PARK PHOTOS

EASILY UPLOAD ONLINE



SCAN QR CODE WITH YOUR CAMERA APP

JAMIE B.



KATIE P.



CARLY S.

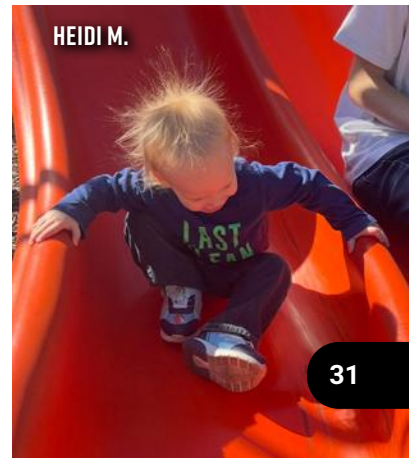
WE WANT YOUR PHOTO IN THE NEXT PEKIN PARK PLAY GUIDE

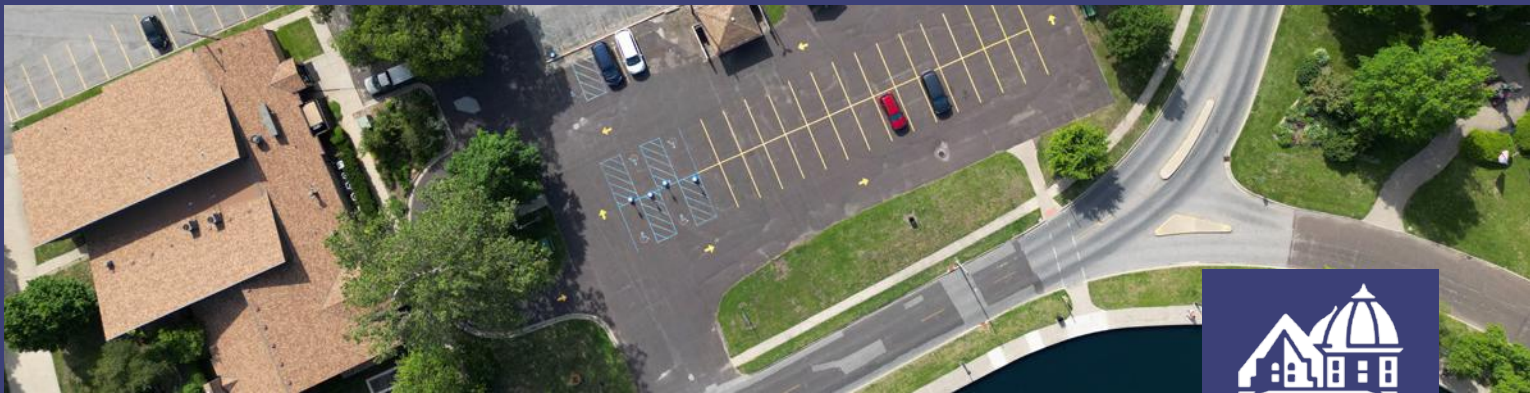
Have you taken an amazing photo of yourself or a family member at one of Pekin Park District's many parks, facilities, or programs? Perhaps you snapped a unique perspective during a community event, recorded a precious moment full of smiles, documented park wildlife, or captured a landscape image highlighting the seasonal beauty. Great! We would love to showcase your photo in our next Pekin Park Play Guide, website announcement, or social media post! We are accepting photos of all kinds linked to Pekin Park District in some way. Upload your submissions using the QR Code at the top of the page or by visiting: <https://am.lol/p/BgSONIU>

OLIVIA H.



HEIDI M.





MILLER CENTER

551 S. 14th St. | Pekin, IL 61554

Ph: (309) 346-5210

millercenter@pekinparkdistrict.org

www.pekinparkdistrict.org/facilities/miller-center/

LIKE US ON FACEBOOK: facebook.com/pekinmillercenter

Alisha Dault, M.A. – Administrator

Receptionists:

Pat Look, Mary Ann Russell, & Dana Remaley

Drivers:

Dick Brewer, Randy Nell, Mike Travis, Greg Remaley, Donna Bettin, Terry Abernathy, & Andy Hesh

MILLER CENTER MAJOR SPONSORS

We extend our greatest appreciation to the following businesses that are generously sponsoring Miller Center programs, activities, and services.

50+ News & Views Magazine

Busey Bank

Carle Health

CEFCU

Charter Senior Living

Don Sarff Insurance

Farmington Village

Golden Tours

Health Alliance

ICPR

John 3:16

NuEra

Liberty Village of Pekin - Pekin Manor & Pekin Estates

OSF HealthCare

Preston-Hanley Funeral Homes

Springfield Clinic

United Way of Pekin

Villas of Holly Brook Pekin

The Miller Center engages adults 50+ in active life through active living! Drop by the center to meet with friends and make new ones too! Feel active and youthful when participating in the various activities and events offered here. There is always a friendly face to greet you as you enter. Once inside, join friends for a class or one of many games; express yourself through woodcarving and crafts; maintain a healthy body, mind, and spirit through exercise classes; or hop on the Miller Center bus for an adventurous day trip. At the Miller Center you will **ENJOY YOUR AGE!**



ENJOY FREE Wi-Fi during your visit at the Miller Center.

Connect to: MillerCenter-Public

MILLER CENTER SENIOR TRANSPORTATION

Need a Ride?

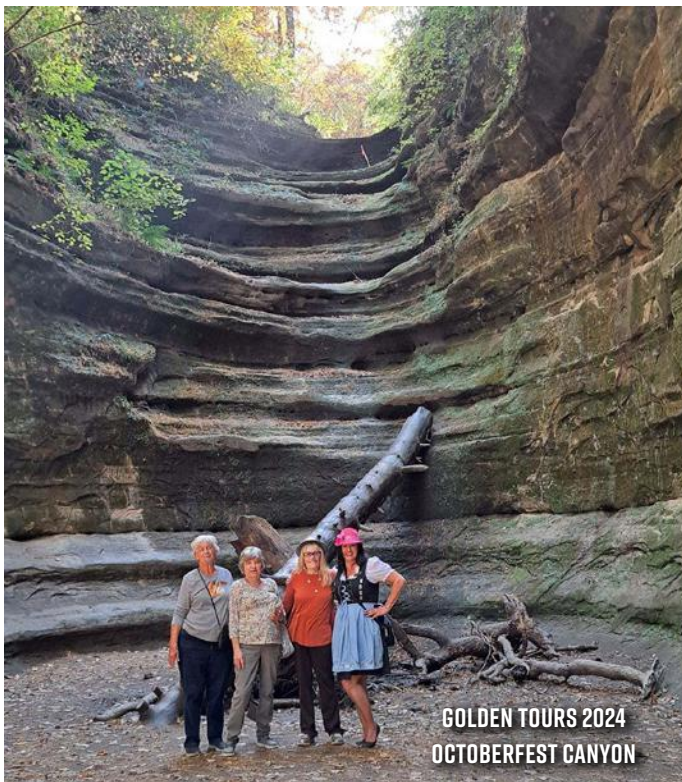
Miller Center offers transportation to seniors living in Pekin. We schedule rides Monday - Friday between 8:00 - 4:00. We recommend you call as soon as you know you need a ride as our schedules fill up quickly!

Medical appointments take first priority, but we also schedule rides to places such as the grocery store, bank or hair salon. We will also bring you to Miller Center!

IN TOWN (PEKIN)	OUT OF TOWN
\$4 per trip	\$11 per trip
Wheelchair transport \$15 per trip	Wheelchair transport \$25 per trip
*these are suggested donations, no one is turned away for the inability to pay	



For more information or to schedule a ride call Miller Center at 309-346-5210.



GOLDEN TOURS

THE ULTIMATE DAYTRIP EXPERIENCE

Exclusive Day Trips with Golden Tours for the Miller Center

January - December 2025

Make Your Reservations By Calling Tracy Ann Drill @ 309-369-3171 or Email goldentoursmidwest@gmail.com

Golden Tours PO Box 344 Washington, IL 61571

Find Us On Facebook: Golden Tours Midwest
Website: www.goldentoursmidwest.com

Tribute to the Stars: Kenny Rogers & Dolly Parton

First Miller Center Mystery Day Trip

CharitableMarket in Ames, IA

HOME SELLING



RENT THE MILLER CENTER FOR YOUR NEXT:

- RECEPTION
 - REUNION
 - PARTY
 - SHOWER
 - LUNCHEON
 - MEETING
 - VENDOR SHOW
- AUDIO & VIDEO AVAILABLE**



MILLER CENTER MERCHANDISE

We have a selection of in-stock merch ready to take home! Stop by the front desk to take a look or place a special order!

RESOURCE AND REFERRAL CENTER

Contact us for information or assistance concerning education, nutrition, health issues, legal aid, employment, transportation, recreation, counseling, and other topics for mature adults.

REFLECTIONS NEWSLETTER

Pick your copy up today!
Liberty Village of Pekin, Pekin Estates, and Pekin Manor sponsor our monthly newsletter, **Reflections**. It can be picked up at the Miller Center at the beginning of each month or check our website for a digital copy at www.pekinparkdistrict.org/facilities/miller-center/.

Reflections... FEBRUARY 2025

NOW SHOWING

SHOWTIME: 1:00 PM
ADMISSION: \$3
includes movie & popcorn!

FEBRUARY 7 **FEBRUARY 14** **FEBRUARY 21**

ROBIN WILSON **LOST VALENTINE** **THE SIXTH SENSE**

www.pekinparkdistrict.org/facilities/miller-center/
facebook.com/pekinmillercenter pekinmillercenter@gmail.com
MILLER CENTER - 309-346-5210 - 535 S. 14TH ST - PEKIN, IL 61654

FIND YOUR FUN AT THE MILLER CENTER

There is no shortage of fun and engaging activities at the Miller Center; there is something here for everyone! For a full schedule of activities, stop by the Miller Center for a copy of our monthly newsletter or check out our website for a complete schedule of fun and games.



PLAY & FUN

Drop in for **FUN & GAMES** throughout the week.

Check the newsletter or website for dates and times.

- Bingo
- Breakfast Bingo
 - 2nd Tuesdays of each month at 9 a.m.
 - 5th Thursdays at 9 a.m. *Sponsored by Charter Senior Living Living (May 29, July 31, Oct 30)*
- Dartball
- Double Pinochle
- Euchre
- Game Day
- Hand & Foot
- Mah-Jongg
- Pinochle
- Popcorn Fridays!
- Pool / Billiards
- Show Time
- Shuffleboard

LEARN: Expand your mind and the rest will follow!

- AARP Driver's Safety Course
- Computer Lab *(Open to the public)*
- Diabetes Prevention Program
- Digital Literacy Classes *(YWCA & AARP)*
- Matter of Balance

MOVE: Get fit on any level!

- Exercise with Ann
- Line Dance Lessons
- Square Dances & Lessons
- Walking Club *Sponsored by Farmington Village*

CREATE: Get inspired to CREATE or learn a new skill with our many groups!

- Crafters & Conversations
- Lapidary Workshop
- Paint Days
- Quilters Group
- Woodcarving Shop

CLUBS

- Book Club *Sponsored by Pekin Library*
- Bottle Collector's Club
- Miller Melodies
- Pekin Garden Club

GO!

- Day Trips
 - Thrift Store Shopping Trips - Springfield, Bloomington, Galesburg, Canton/Lewiston, Eureka/Metamora
 - March 14
 - April 16
 - May 13
 - June 17
 - July 15
 - August 13
 - September 17
 - October 21
- Golden Tours Day Trips *(Call Tracy @ 309.369.3171 to register)*
 - April 29: A Day with the Amish in Arthur, IL
 - May 21: Mules Mansion & Mimosas Tour
 - July 23: Explore Lake Geneva
 - October 13: Mystery Tour
 - December 10: Holiday Inn at Myers Theatre

RIDE

- Transportation Service - Community Rides *(see page 32)*

SPECIAL EVENTS

- Power of Age Expo Monthly Lunch & Learn *(see page 35)*
 - 4th Tuesday of the month – doors open at 10:30 a.m.
- Line Dance Party / Euchre Party
 - You don't want to miss these Dance Parties! Pre-Teens, teens and adults alike are welcome. The cost is \$7.00 per person collected at the door and you will be given a door prize ticket for a gift drawing at 8:00pm. Song requests will be encouraged so everyone has the opportunity to dance to their favorites.
- Marigolden Breakfast
 - September 7th | 8:00 – 10:00 a.m.
 - Proceeds support programs from TCRC & Miller Center
- Walk for a Ride - September 9th
- A "Hole" Lot of Fun Mini Golf Tournament: May
- Halloween Party: Oct 31st *Sponsored by Charter Senior Living*
- Friendsgiving Party *Sponsored by Villas of Holly Brook Pekin*



Come enjoy a free lunch while listening to a presentation on an age-related topic. There will be plenty of time to visit with vendors and learn more about local resources. Space is limited. RSVP to Miller Center.

Fee: FREE, registration required

The Power of Age Expo **2025**

CHANGING THE CONVERSATION ON AGING

THE 4TH TUESDAY OF EACH MONTH

DOORS OPEN AT 10:30 A.M.

VENDORS | LUNCH | SPEAKER

SPACE IS LIMITED, PLEASE REGISTER IN ADVANCE

DATE	SPEAKER	TOPIC
January 28	Peggy Peryam: Alzheimer's Assoc.	Understanding Alzheimer's & Dementia: 10 warning signs
February 25	Miranda Gilliam: TCHD	Taking Control of Your Health: Decoding Nutrition Labels & Avoiding Fad Diets
March 25	Ally Danner: Tazcom	Stay Calm, Call 911 - Effective Communication during Emergencies
April 22	Jackie Bowers: Center for Youth & Family Solutions	Reduce Loneliness through Engagement
May 27	Charla Buchanan & Lance: CEFCU	Don't Let the Bad Actors Win
June 24	Alex Chiou: Beltone	Dementia & the Dangers of an untreated Hearing Loss
July 22	Margie Getz: Methodist College of Nursing	Between us, silence is comfortable: How friends matter across life
August 26	Deputy Nathan Hastings: Tazewell Co. Sheriff	Senior Citizen Situational Awareness Workshop

DIGITAL LITERACY

Free Lectures, Workshops, & Tech Series

Quickly growing in popularity, this program is a perfect environment to sharpen your tech skills or learn new ones.

Topics

Contact the front desk for dates and times.

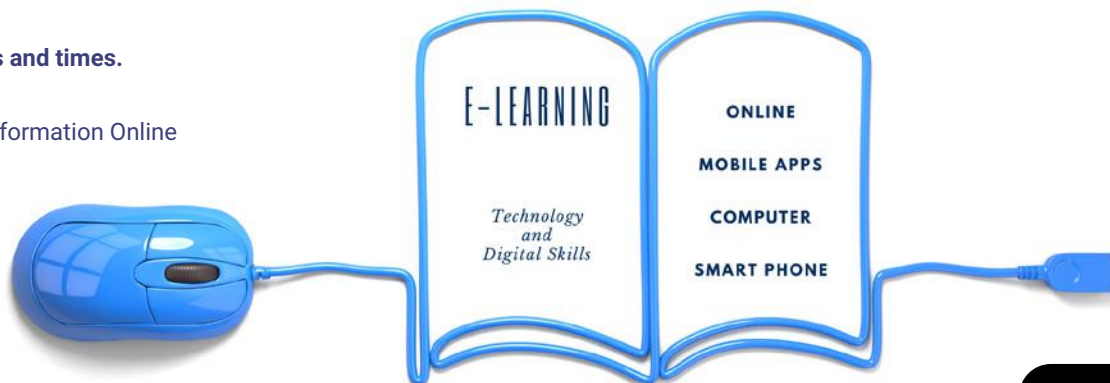
- Online Basics
- Protecting Your Personal Information Online
- Finding Information Online
- Google Workspace
 - Gmail Tips & Tricks
 - Google Maps
- Mobile Health Apps
- Online Health Resources
- PayPal
- Video Chats

Sponsored by:



AARP Foundation
Digital Skills Ready@50+

IN COLLABORATION WITH
SENIOR PLANET





PAVILION ON THE LAGOON

RENTAL FACILITIES

Spaces & Places Available for Rent

INDOOR FACILITIES

Pavilion on the Lagoon

Phone: (309) 201-4008

- Historic facility
- Kitchen access
- Includes tables and chairs
- Air conditioned/heated
- Overlooking the beautiful lagoon

Miller Center

Phone: (309) 346-5210

- Three spacious rooms
- Audio visual equipment available
- Kitchen facilities
- Fireplace in McNaughton Lounge overlooking lagoon

IRVSRA Recreational Center

Phone: (309) 201-4005

- Two spacious rooms
- Includes tables and chairs
- Dance floor
- Audio visual equipment available

OUTDOOR FACILITIES

Pekin Park District offers small and large shelter rentals at local parks. Outlying parks are first come, first serve. For reservation information call (309) 201-4008.

- Royal Avenue Shelter
- 4-H Shelter
- Rotary Park Shelter

SEASONAL FACILITIES

During specific seasons, there are opportunities to rent the following facilities. For reservation information call (309) 347-7275.

- DragonLand Water Park | (309) 201-4008
- Magic Dragon Mini Golf | (309) 347-7275
- Veterans Memorial Arena | (309) 353-4319
- Boating on the Lagoon | (309) 347-7275

WEDDING FACILITIES

During specific seasons, there are opportunities to rent the following facilities for your outdoor wedding. Call (309) 201-4008 for reservation information.

- Fountain
- Gazebo
- Pergola

BIRTHDAY PARTIES

PEKIN PARK DISTRICT, THE PLACE TO HAVE **YOUR PARTY!**

We offer parties of all different styles across the park at the DragonLand, Veterans Memorial Arena, & Parties in the Park. These parties include an event attendant to help you with the hassle of set up and party outline. This also includes a gift from the park district for your person of honor. Let us take the stress of planning your party and put in all the fun!

\$140

Covers 15 participants per party. Please call the Recreation Office at (309) 347-7275 with any questions.

- **Party Attendant**
 - ▶ Meeting and greeting party, stores gifts, aids in party setup/preparing party area, and party games (For specific parties).
- **DragonLand Water Park**
 - ▶ Celebrate your birthday with some fun in the sun at DragonLand! Enjoy your own personal table for 2 hours with swim time and designated present and cake time (Cake and ice cream not included). Two times allotted each day excluding holidays, 12 p.m. - 2 p.m. and 2:30 p.m. - 4:30 p.m.
- **Veterans Memorial Arena**
 - ▶ Birthday on ice! Have your party be a skate party with ice skates provided, organized games, and time for presents and cake (Cake and ice cream not included). Reserve your table and time slot during Open Skate hours, only one party available per Open Skate so look to book ahead!
- **Parties in the Park**
 - ▶ Have your birthday party at one of the Park Facilities, sports fields, or even just out in Mineral Springs. Our facilitator will bring the fun to you!

TYPES OF PARTIES AVAILABLE:

Sports Parties at a ball diamond or field.
Princess/Prince Tea Party*
Mad Scientist Party
Mini Golf Party (seasonal)
Campfire Party at McNaughton
Just Fun and Games Party
Video Game Party (limited availability)*
Craft/Art Party*
Got a theme in mind? We can come up with activities to match!
*Will require an additional facility fee (Miller Center/Pavilion).

For more information on private rentals, please see corresponding event location page.

PARTIES AT IRVSRA RECREATIONAL CENTER

Dance Party

Packages for 3 or 5 hours include: Room rental fee, customized 190 inch backdrop/wall-splash, DJ, lighting package, Dance & Party lights, and dance floor.



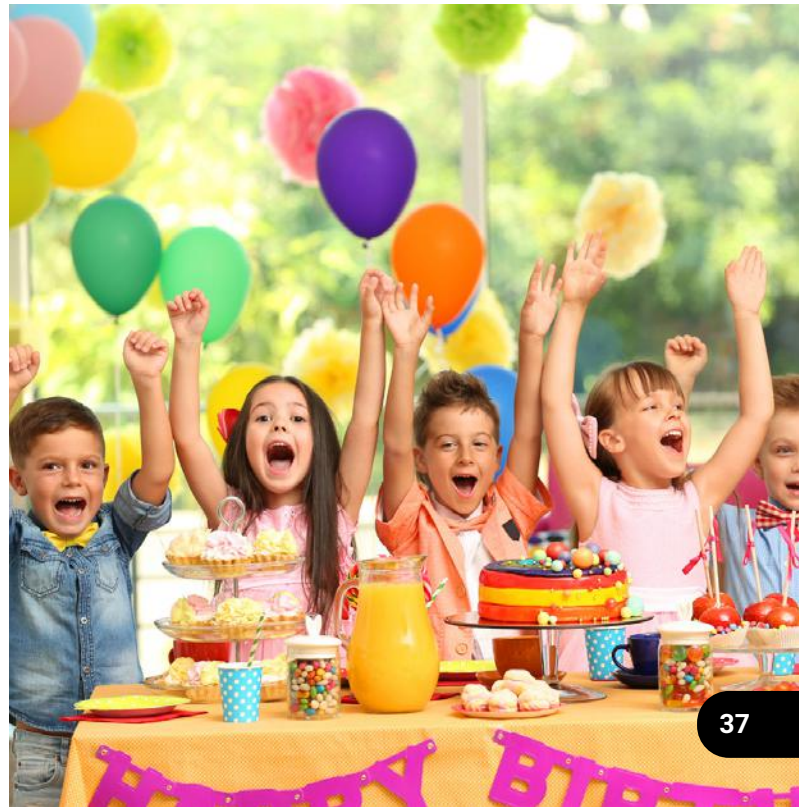
Karaoke Party

Packages for 3 hours include: Room rental fee, DJ for karaoke, dance & party lights, lighting package, and dance floor.

Putt-Putt Party

Package: room rental fee, customized 190 inch backdrop/wall-splash, and one round of Magic Dragon mini-golf per guest

Packages are customizable, and upgrades can be added individually per client request. For pricing and custom quotes contact (309) 201-4005 or email rentals@irvsra.org.



QUESTIONS?

AMERICAN DISABILITIES ACT

The Pekin Park District complies with the Americans with Disabilities Act (ADA) which prohibits discrimination in the provision of programs, services or activities to individuals with disabilities. We invite any resident with special needs to contact our staff upon registration so that a smooth inclusion may occur. Our district provides additional specialized services for people with disabilities through IRVSR. Feel free to call (309) 353-4328 if you:

- Have questions about the Pekin Park District's commitment regarding the ADA (Americans with Disabilities Act) policy
- Believe you have been unfairly discriminated against by the Park District
- Wish to file a complaint alleging discrimination on the basis of a disability in the provision of programs, services or activities by the Pekin Park District

CONTACT:

Cameron Bettin

Executive Director

ADA Coordinator/Compliance Officer

Pekin Park District

Robert N. Blackwell Administration Building
1715 Dragon Drive, Pekin IL 61554

Office Phone: (309) 353-4328

E-mail: cbettin@pekinparkdistrict.org

HOW TO REGISTER

Online: pekinparkdistrict.org

Fax: (309) 347-3970

Mail: 1701 Court St., Pekin, IL 61554

Walk-In: Veterans Memorial Arena
9 a.m. to 7 p.m.
Monday – Thursday
9 a.m. to 6 p.m.
Friday

QUESTIONS ABOUT A PROGRAM?

Program descriptions contain the Program Manager's contact information. Please call or email them with any questions you have.

PROGRAM REFUNDS

Refunds are given if a request is received seven days prior to the start of a program, less \$5 service charge. Refund requests less than seven days prior to the start date will receive a 50% refund. Refunds are mailed within three weeks. If a credit card was used with your online registration, your card will be credited. Refunds are not given after the start of a program, except for illness (note from doctor must be submitted) or if moving from the area.

SCHOLARSHIPS

Scholarships are available to Pekin Park District residents in need. Forms are available in the Recreation Reception Office. See page 7 for more information.

PARK DISTRICT RESIDENCY

Residency is available to anyone living within the Pekin Park District boundaries and paying taxes to the Pekin Park District. If you are in question regarding your residency, please call the Recreation Office at (309) 347-7275. Non-residents will pay an additional \$3 per program (unless otherwise noted).

PROGRAM WAIT LIST

Popular programs fill up fast! If this happens, please ask to be placed on a wait list for the next available opening.

LOST & FOUND

Items found on park grounds are turned into the Recreation Office located in Veterans Memorial Arena. If you discover you've lost something, please call the Recreation Office at (309) 347-7275 to inquire.



PEKIN PARK DISTRICT

	Blenkiron Park 601 Park Ave.	Coal Miners' Park 300 South Parkway Dr.	Everette McKinley Dirksen Park Route 98	Independence Park Enter at LaSalle Blvd.	James Field 101 South 9th St.	Kiwanis Park South 9th and Koch Streets	Kiwanis Park North 1620 Parish Ave.	John T. McNaughton Park 217 McNaughton Park Rd.	Miller Park 121 Court St.	Mineral Springs Park & Lagoon 701 Court St.	Railsplitter's Park 268 Derby St.	Riverfront Park 121 Court St.	Rotary Park 1115 State St.	Southside Business Assoc. Park 200 Sapp St.	Sports Complex 300 Koch St.	Tante Park Broadway Rd.	Willow Park 500 Willow St.	Lick Creek Golf Course 2210 N. Parkway Dr.	Parkview Golf Course 2300 Broadway Rd.
PARKS, FACILITIES, AMENITIES & MORE	.25 acres	47 acres	459 acres	340 acres	2 acres	6.5 acres	6.5 acres	800 acres	2.5 acres	220 acres	3 acres	2.5 acres	1.9 acres	1.2 acres	82 acres	43 acres	.25 acres	160 acres	101 acres
Archery Range			1																
Ball Diamonds					2	1				4	1		1	1	12				
Basketball Courts										2			1	2			1		
Boating (fee at Mineral Springs Park)										1		1							
Camping (tent only) (fee)								1											
Concession Stands										2					2			1	1
Disc Golf								1											
Dog Park (lighted)										1									
Driving Range (fee)																		1	
Fishing (Lake Butterfield, Zuercher, Lagoon & River)								1		1		1							
Football Fields															4				
Golf Pro-Shop																		1	1
Hiking/Biking/Paths/Lagoon (Total length trails) (x laps around = miles)		4.3 m	1	12.3 m	5x= 1m			1	1	2x= 1m		4.3 m			1x= 1.6m	1			
Horse Stables (fee)								1											
Horseshoe Pits									1										
Indoor Ice Skating Rink (fee)										1									
Facility/Room Rentals (fee) Pavilion, Shelters, Miller Center, IRVSRRA										5			1					1	
Miniature Golf (fee)										1									
Pekin Bike Trail - 4.3 miles (Allentown Rd. to Riverfront Park)		1							1	1		1							
Playgrounds	1					1	1		1	1	1		1	1	2		1		
Racquet & Full Fitness Facility (fee)										1									
Radio Controlled Airplane			1																
Restrooms/Comfort Stations	1	1						1	1	5		1	1		2			1	1
Rollerblade Hockey Court																	1		
Senior Center (50+)										1									
Shelters/TeePee Shelters (* indicates applicable rental fee)	1	1	2			1	1	7	1	2*		1	1*	1		2			
Skate Board Park										1									
Soccer Field															10				
Swimming/Water Play Area										1		1							
Tennis Courts										5									
Volleyball Courts										4									



ERICA B.



SAMANTHA E.



LANCE S.

THANK YOU TO OUR PARTNERS



Borrow Local, Save BIG!

Pay 3X Less than National Online Competitors on Your Next Home Loan

Apply In-Person or Online @
firstpekinsavings.com



700 SOUTH CAPITOL STREET

www.fbcpekin.com



FIRST BAPTIST PEKIN

SUN. TRADITIONAL SERVICE: 9:00A
MODERN SERVICE: 10:30A

WED. WEDNESDAY KIDZ: 5:30P
412 YOUTH GROUP: 5:30P

GRADES 1-6
GRADES 7-12



PROUD PARTNER OF THE PEKIN PARK DISTRICT

 **ATLAS**
SUPPLY COMPANY

(309) 347-1584
OFFICE@ATLASSUPPLYCOMPANY.COM

WE BELIEVE IN CLEAN

SERVING CENTRAL ILLINOIS' JANITORIAL SUPPLY NEEDS SINCE 1985



Building **Business.**
Growing **Wealth.**
Since **1868.**

Forbes AMERICA'S BEST BANKS

BuseyBANK[®]

busey.com Member FDIC



Schwartz

ELECTRIC & SIGN CO

Prompt, Professional Service
Residential - Commercial

(309) 347-2196

2627 Allentown Rd.

PROUD PRINTER FOR THE PEKIN PARK DISTRICT

- Custom Screen Printing
- Embroidery
- Pekin Apparel & much more

T-SHIRT
HOUSE
PEKIN, ILLINOIS

(309) 346-0336
219 South Second St.

TSHIRTHOUSEI@YAHOO.COM