

THE BRIDGE AT GIN ALLEY

119 N. PEORIA | FULTON MARKET, CHICAGO

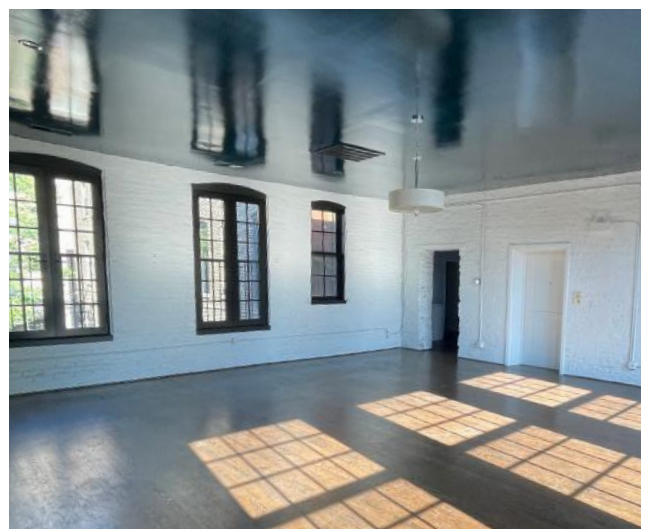
THE OPPORTUNITY

- One-of-a-kind retail, showroom, or creative space
- Bird's eye view of Gin Alley
- 975 SF available now
- Ample natural light, high ceilings, hardwood floors, and elevator access
- Co-tenants include Madewell, Warby Parker, Uncommon James, Grace Loves Lace, and Billy Reid
- Rent: \$4,000/month



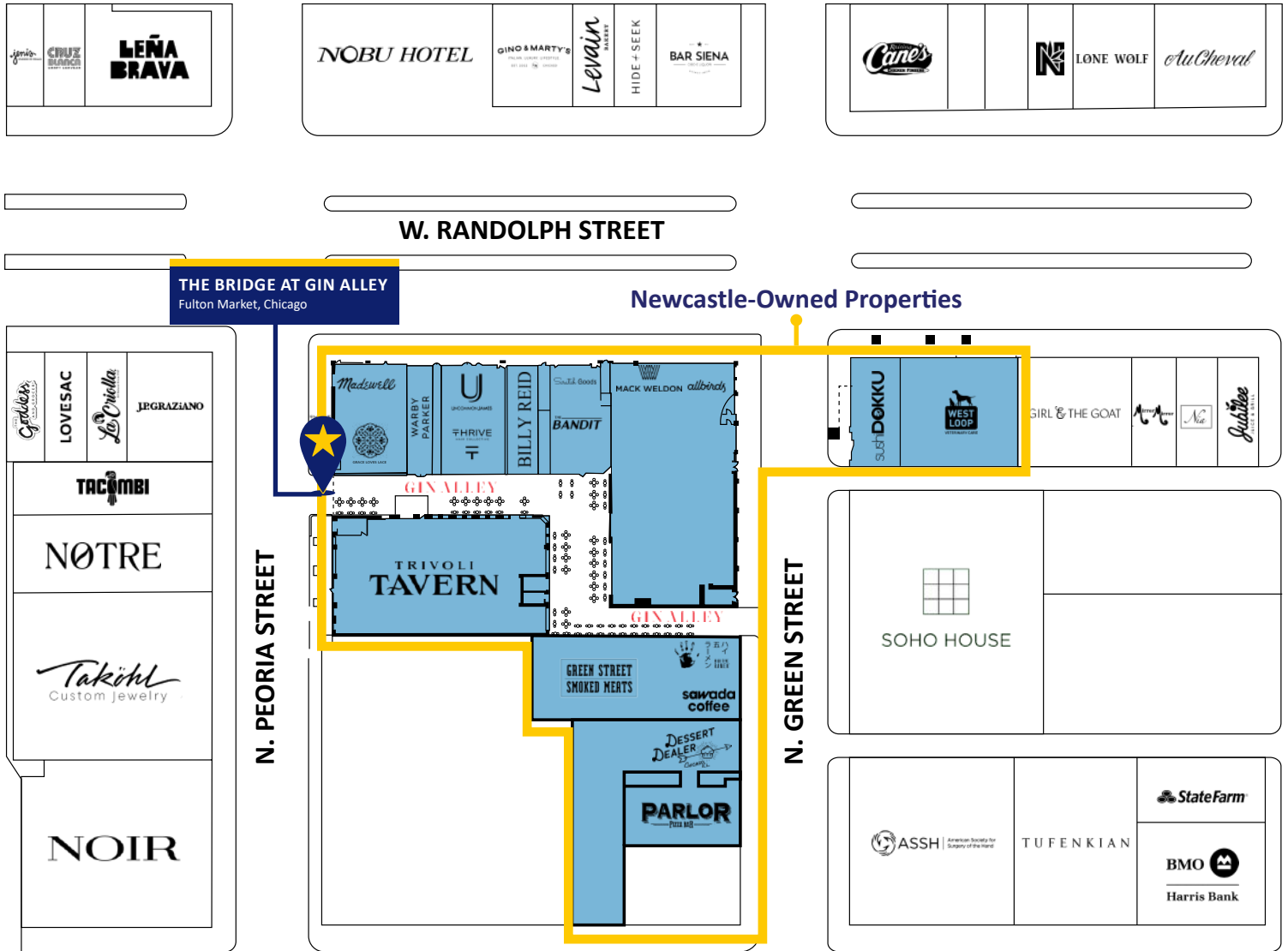
AREA ACTIVITY

- Incredible mix of retailers: Lululemon, Anthropologie, Mejuri, Beyond Yoga, and more
- Home to chic hotels: Nobu, Soho House, The Emily, and The Hoxton
- Surrounded by the city's hottest restaurants
- WPP, Google, McDonalds, EY, and others have made Fulton Market their home



THE BRIDGE AT GIN ALLEY

119 N. PEORIA | FULTON MARKET, CHICAGO



JOIN

- HOTELS** the emily hotel | the hoxton | NOBU | SOHO HOUSE
- OFFICES** G | McDonald's Headquarters | EY | WPP | Mondelez International
- RETAILERS** ANTHROPOLOGIE | MEJURI | lululemon | BEYOND YOGA