

# Winchelsea Star

Price \$1

Your Weekly Community Newspaper

Since 1977

Vol 47 Ed 47

Tuesday 3 December 2024

[winchelseastar.org.au](http://winchelseastar.org.au)



Doug McKenzie, Sarah Groves, Sammi Foot



**We have a  
new shop in  
Winchelsea!**

Winchelsea Ag Horse & Pet  
15 Murrell St, Winchelsea VIC 3977  
Ph: 03 4223 1030 Mob: 0418 126 073  
Web: [www.aghorseandpet.com.au](http://www.aghorseandpet.com.au)

# Empty and scrape out your recycling.

Food or liquid left inside containers in your yellow-lidded recycling bin can spill on other items. This reduces the quality of the materials and causes problems during the recycling process.

Scrape out any food and pour out excess liquid before recycling them.

**Small acts make a big impact.**

**Find out more: [surfcoast.vic.gov.au/recycling](https://surfcoast.vic.gov.au/recycling)**





# Winchelsea Christmas entertainment for everyone

**Saturday 7 December 2024 gates open at 5.30 pm for a 6.00 pm start**

*Come and share in the festivities of Christmas and celebrate the birth of Jesus.*

Our Annual Christmas Carols are here, promising a jolly, rollicking fun time for all the family.

There are many performances to enjoy. You will be in stitches as "Nicholas Ridiculous" performs his whimsical slapstick routines and catchy music with his charismatic puppets.

Rob Davies, MC for the night together with the Colac Band will lead the carols sing along while Stewart Mathison and his fellow band members will entertain us with music.

Don't forget our young performers too from Winchelsea Occasional Care, Journey Early Learning Centre, Mainly Music and Mel's Dance Central with music, song and dance.

Winchelsea Lions will provide a sausage sizzle, Smooth Vibes will have smoothies and yummy gluten free options while the CWA ladies will have homemade foods to enjoy.

For those who can't do without their coffee don't worry we will have you covered as well.

So, bring a chair or a blanket and a gold coin donation and join us on the Winchelsea Primary School oval. If the weather turns bad the event will move to the Leisure Time Centre (LTC).

The night promises fun, laughs, song and enjoyment and even a visit for the kids, young and old, from Santa.

## GROWING WINCHELSEA INVITES YOU TO OUR ANNUAL CHRISTMAS CAROLS

**WHEN: SATURDAY, 7 DECEMBER 2024**

**6:00PM TO 9:00PM**

**AT: WINCHELSEA PRIMARY SCHOOL OVAL\***

**BRING A CHAIR, BLANKET AND PICNIC**

**(\*IF RAINING, EVENT WILL MOVE TO THE LTC, BLANKETS ONLY)**

**GOLD COIN DONATION**

**FOOD AND DRINKS WILL BE AVAILABLE FOR PURCHASE**



## Murray Aisbett In Memorial

Winchelsea Lions Club members and partners would like to extend their sincere condolences to Murray's family and friends on his sudden passing.

Murray was a much loved and valued member of the Lions Club since 1992 being involved in all aspects of the club holding many positions from President, Secretary and most recently Tail Twister. His policy of never letting the truth get in the way of a good story had us laughing at many dinners. His refusal to learn anything technical will mean our eftpos machine will always be known as "the electric thing".

**Vale Murray you will be sadly missed.**



# Winchelsea Community Foodbank

**Fridays, 12 - 2PM**

**30-32 Hesse Street Winchelsea**



For more info, contact Tess  
[healthpromotion@hesse.vic.gov.au](mailto:healthpromotion@hesse.vic.gov.au)  
0417 848 292



Ian Whiting (Board Chair),  
Carissa Brock (CEO), and the  
Board of Directors extend a  
warm invitation to the 30th  
Annual General Meeting of  
Hesse Rural Health Service.

Guest speaker: Lana Purcell,  
Founder & CEO of Feed Me  
Bellarine.

Livestream available



## 2024 Annual General Meeting



**DEC 11**

**AT 7.00PM**

**The Hub**

70 Hopkins St, Winchelsea 3241

**RSVP 9th Dec**

(03) 5267 1200 or  
[reception@hesse.vic.gov.au](mailto:reception@hesse.vic.gov.au)

## YOU CAN'T CONTROL FIRE, BUT YOU CAN PREPARE FOR IT.

The best way to keep you and your loved  
ones safe this fire season, is to make sure  
you have a fire plan.



Go to [fireplanner.vic.gov.au](https://fireplanner.vic.gov.au)  
to create your personalised  
fire plan now.

## HOW WELL DO YOU KNOW FIRE?

Authorised by the Victorian Government, 1 Treasury Place, Melbourne





# Shop local to share the Surf Coast Spirit this Christmas

## Surf Coast Shire

Christmas activities in Torquay and Anglesea will encourage community members to shop local and Share the Surf Coast Spirit this festive season.

Surf Coast Shire Council is joining trader groups to organise festive fun in:

- Gilbert Street, Torquay – Saturday 7 December – 10am to 1pm. Roving Santa, face painting, local buskers, and a gift-wrapping station for a gold coin donation.
- Anglesea town centre – Saturday 14 December – 10am to 1pm. Take in Business Anglesea's Christmas decorations and listen to carollers outside Oaks Bakery Café. There's also a gift-wrapping station for a gold coin donation and face painting.



Santa and Councillor Paul Barker encourage people to Share the Surf Coast Spirit.

The activities are part of Council's Share the Surf Coast Spirit campaign, which is encouraging people to shop local shire-wide this Christmas.

A short video – to be shared with local businesses and promoted on social media – will showcase the variety of gift options available across the coast and hinterland.

Surf Coast Shire Councillor Paul Barker said it was an ideal time of year to support local businesses. "Christmas is a special time for many people and early December is a popular time to start thinking about buying gifts," he said.

"Our local businesses are the backbone of our local economies. We know that a strong summer in our peak visitor season can be pivotal for local businesses, but we'd also love to see a wave of local support whenever possible.

People can check out the Share the Surf Coast Spirit video on Surf Coast Shire Council's social media accounts from 1 December.

Council will install Christmas stars in Torquay town centre (Bell St, Gilbert St, The Esplanade) and a Seasons Greetings billboard near Council office, at the entry to Torquay.

Council is also supporting community-run carols events. Check out the Surf Coast Events website for details: [surfcoastevents.com.au](http://surfcoastevents.com.au).

**What matters most to you?**

Your feedback will help shape Surf Coast Shire Council's strategic priorities for the next four years. Together, it's our focus, our future.

We'd love to hear from you.

Have your say by taking our survey at [surfcoast.vic.gov.au/OurFocusOurFuture](http://surfcoast.vic.gov.au/OurFocusOurFuture).

Survey closes 3 February 2025.

*Help shape where you live.*

**OUR FOCUS  
OUR FUTURE**

Stay safe from COVID-19 this summer  
DHHS

Victorians are being reminded to take steps to protect themselves from COVID-19 this summer, as COVID infections increase.

The latest COVID-19 Surveillance Report shows a significant increase in people in hospital with COVID-19, with a seven-day average of 197 – a 59% increase compared to last month. The number of cases has also increased 44% in the month.

The Chief Health Officer urges people to take steps to protect themselves and those around them. “Simple things can have a big impact: if you’re feeling sick, please stay home,” she said. “If you need to go out, or you’re visiting a higher risk setting like an age care home or a hospital, wear a mask.”

Stay up to date with recommended COVID-19 vaccinations. “Immunity wanes over time so staying up to date with your vaccinations will be your best protection against severe illness.”

Victorian health services are well prepared and well equipped to handle escalations, which often occur at this time of year. The Department, together with health services, will continue to monitor the situation as it progresses.

For more information on how to protect yourself and those around you visit the Better Health Channel.

100 million reasons to travel  
around regional Victoria

Victorian State Government

Victorians are continuing to reap the benefits from the Victorian Government’s regional fare cap, saving passengers nearly \$100 million since public transport fares were capped at the same price as the daily metro fare.

Minister for Public and Active Transport Gabrielle Williams today announced more than 37 million trips had been taken on regional trains and coaches since the fare cap commenced.



Jessi Rebel and Asha. Photo: Ula Majewski

Making Waves with Creative Women

Join a free panel discussion celebrating creative women in the surf for the Great Ocean Road Women’s Surf Festival.

Facilitated by Ula Majewski, hear from Jessi Rebel, Hannah Trigger, Noelani Le Nevez, and Katey Shearer as they share their creative journeys and how it intersects with their passion for surfing.

**When:** 1PM Saturday 7 December  
**Where:** Great Ocean Road Womens Surf Festival  
Marquee - Located in Lorne beach carpark

**Bookings:** [greateoceanroadwomenssurfest.com](https://greateoceanroadwomenssurfest.com)

Proudly supported by Surf Coast Shire Council and the Australian National Surfing Museum.



ART matters



Planning and Environment Act  
1987

SURF COAST PLANNING SCHEME

Notice of Approval of  
Amendment  
Amendment C138surf

The Minister for Planning has approved Amendment C138surf to the Surf Coast Planning Scheme.

The Amendment came into operation on the 20 June 2024 when this notice was published in the Victoria Government Gazette.

The Amendment rezones the land at 25 Cressy Road, Winchelsea from Farming Zone to Industrial 1 Zone, applies Design and Development Overlay Schedule 5 to the land, and amends the Winchelsea Framework Plan at Clause 02.04-4. The permit allows subdivision of the land into 24 lots and construction of a fence.

The Minister has granted the following permit under Division 5 of Part 4 of the Act:

Permit No.	Description of Land
PG21/0085	25 Cressy Road, Winchelsea (Crown Allotments 1–9 Section 72 Parish of Mirnee)

A copy of the Amendment can be inspected, free of charge, at the Department of Transport and Planning website at [planning.vic.gov.au/public-inspection](https://planning.vic.gov.au/public-inspection) or by contacting **1800 789 386** to arrange a time to view the Amendment and permit documentation. A copy of the Amendment and permit can also be inspected, free of charge, during office hours, at the offices of the Surf Coast Shire Council, 1 Merrijig Drive, Torquay or on the Council website at [surfcoast.vic.gov.au](https://surfcoast.vic.gov.au).





# Winchelsea Star COMMUNITY NOTICEBOARD

email editor@winchelseastar.org.au or  
leave at Winchelsea IGA

## SANDYZ NEW TRADING HOURS

**Thursday, Fridays  
and Saturdays**

Now open earlier for lunch  
from 11.30am.  
Close at 8.00pm  
Sundays open from 3.00pm  
now that we are open for lunches

## DIAMOND DOT

Last Diamond Day for this year will  
be Saturday 7 December at the  
Senior Citizens rooms Harding Street  
Winchelsea We will have a Kris Kringle.

\$5 for the day.  
For a hot lunch, it will an extra \$10.

Please ring Tracey 0427500649 if  
coming for lunch or see me at the  
bakery. We need numbers by  
4 December please.

We wish everyone a Merry Christmas!

## WINCHELSEA OP SHOP

Winchelsea Op Shop will be closing  
accepting donations after Saturday  
November 30th.

We will be closing for our Xmas break  
from Monday 16th December and  
re opening on Friday January 3rd when  
we will start to accept donations again.



## WANTED: A ROLL OF LUCERNE GREEN HAY

0490830205  
Deborah Hick

## WANTED: AGISTMENT

22 Angus cows and Autumn calves  
Short or long-term (preferred)  
Can BYO yards if needed  
Please call Amelia 0408 995 224  
Winchelsea

## LIONS CLUB

Environmentally friendly  
compressed paper bricks for your fire.  
Save on the rising cost of wood.  
Pack 4 bricks \$5 - Roll small rolls \$2  
Contact Alan 0476 475 422

## WINCHELSEA PICKLEBALL

Winchelsea Leisure Time Centre  
Wed 7-830pm or Thurs 10-11.30am.  
All equipment supplied,  
wear suitable footwear.  
Lesley Mathison 0438 672 197

## WINCHELSEA TENNIS CLUB

### JUNIOR COACHING

Mondays from 3.30pm  
with experienced Nicole Mullen, \$10

### SOCIAL TWILIGHT TENNIS

Monday evenings from 6.00pm.  
All Welcome!

## FOR SALE TRACTOR

Agrison, 60 Hp 4wd  
4 In 1 bucket + forks, 1000 Hours  
0432 552 713.

## CUBS AND JOEYS

For more information,  
or to get involved, contact  
Marie McPadden – 0409330147 or  
mcpadden630@bigpond.com



Social Bridge is played

**EVERY TUESDAY**

**10.30 AM-1.00 PM**

**SENIOR CITIZENS CENTRE**

36 Harding Street Winchelsea

*New players always welcome*

Elaine Atkinson 0458 009 616



### FIRST SUNDAY OF EACH MONTH

5 January 2025  
2 February 2025  
2 March 2025  
6 April 2025  
4 May 2025  
1 June 2025

## WINCHELSEA GIRL GUIDES

Are you interested in joining an  
enthusiastic, self-motivated team working  
with girls, 5-15 years?

Winchelsea Guides are seeking female  
adult volunteers. Help us provide a  
stimulating program giving leadership  
development opportunities for girls, as  
well as providing fun and friendship.

Phone Yvonne 0448 672630



THE  
WINCHELSEA STAR  
ORGANISATION INC.

Winchelsea  
Star



## Winchelsea Star Coffee Meeting

**Saturday 25 January 2025**

Everyone is invited to come along to a monthly meeting - with coffee of course - on the last Saturday of each month.

Your comments or suggestions, feedback, ideas for stories or coming events are welcome - or simply to say Hi!

### Next Winchelsea Star Production Meeting

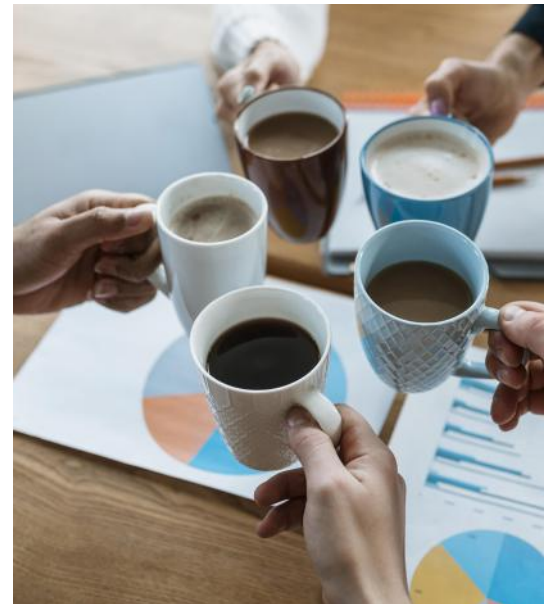
Saturday 25 January 2025 9 - 10am

@ Sweet Thyme, Winchelsea

### This Week's Star

Editor - Yvonne Stevens

Designer - Susan Corby



### 2024 Conference Community Newspaper Association Victoria

A month has gone by already after the annual October CNAV Conference in Bendigo. It was good to get together with many of our members, new and old.

The awards presentation was interesting, some made in person by the judges, while other judges sent video presentations. It was pleasing to hear the constructive comments from the judges.

## send your stories

**news@winchelseastar.org.au**

### LOCAL NEWS and ARTICLES WELCOME

Include name and address of the sender

Email news@winchelseastar.org.au

Leave hard copy at IGA Supermarket

### DEADLINE 5pm Fridays

4pm Sundays - hard copy articles left at IGA

6pm Sundays - sports results and weekend events

### ADVERTISING

advertising@winchelseastar.org.au 0408 102 802

## free digital subscription

winchelseastar.org.au

## JOIN US ON

## FACEBOOK

facebook.com/TheWinchelseaStar

## production

**Editors:** Cerrie Fogan, Yvonne Stevens, Judy Cameron

**Advertising:** Sasha Gauntlett, Neil McInnes

**Design:** Susan Corby, Tony Phelps

**Printed by:** Winchelsea Community House

**Website by:** Winch Websites

## committee

**President:** **president@winchelseastar.org.au**  
Neil McInnes

**Treasurer:** **treasurer@winchelseastar.org.au**  
Cathy Cheadle

**Secretary:** **secretary@winchelseastar.org.au**  
Tony Phelps

**Members:** Mick O'Mara, Linda Carter, Susan Corby  
Sasha Gauntlett, Judy Cameron,  
Yvonne Stevens, Cerrie Fogan



© Winchelsea Star Org. Inc. All rights reserved  
Winchelsea Star Organisation Inc.

Reg. No. A0053999F ABN 75 941 529 279

winchelseastar.org.au PO Box 5 Winchelsea 3241

Views expressed are not necessarily those of the Winchelsea Star or Committee. The Winchelsea Star reserves the right to edit or not publish any article.





# Winchelsea Churches



## St John's Catholic Church

Father Joseph Panackal  
0404598558

Harding St, Winchelsea 3241

MASS TIMES  
DECEMBER 2024

6pm Sat. Dec. 7, 14, 21, 28  
JANUARY 2025

6pm Sat. Jan. 4, 11, 18, 25  
CHRISTMAS TIMES

Reconciliation Sat 7 December, 5.00pm  
Christmas Day 9.00am

## St Thomas' Anglican Church

Rev'd Phil Jacobson  
0477 672 042

stthomaswac@gmail.com  
Barwon Tce, Winchelsea  
Service 10am

## Winchelsea Uniting Church

0475 777 301

uca.winchelsea@gmail.com  
Hesse St, Winchelsea 3241  
Services 9.30am Sundays

## Thought for the Week

"I expect to pass through this life but once. If, therefore, there be any kindness I can do to any fellow being, let me do it now and defer or neglect it, as I shall not pass this way again."

John Bader,  
Former U/C Accredited  
Lay Preacher

## Adopt a Surfcoaster this Christmas

**+Bringing Joy to Families in the Surf Coast Shire  
Spread Christmas Cheer – Help a Family in Need**

### How You Can Help

We're calling on our amazing Surf Coast community to make this Christmas unforgettable. Donations of gifts or essential items can bring smiles to the faces of local children.

**Gift Suggestions**  
We welcome gifts for children aged newborn to 18 years. Consider donating:

- Toys & Games: Board games, Lego, beach toys, balls, puzzles
- Gift Vouchers (Mecca, Rebel, JB Hi-Fi, Bounce, Live Wire Park)
- Books (all ages)
- Art Supplies: Craft kits, drawing sets
- Beach Gear: Towels, hats, sunglasses
- Personal Care: Perfume, cologne, skincare packs, deodorant sets
- Chocolates/Stockings
- Fashion: Backpacks, water bottles, socks, jewellery, make-up packs
- Please include wrapping supplies so families can wrap gifts themselves.

**Community Bank Surf Coast**

## Together, Let's Spread Christmas Magic!

**Bendigo Bank Community Bank Surf Coast**

**Drop off points**  
**Community Bank Winchelsea**  
11 Main Street Winchelsea  
**Community Bank Anglesea**  
65 Great Ocean Road Anglesea  
**Community Bank Lorne**  
1/32 Mountjoy Parade Lorne

**If you or someone you know could use support this Christmas**  
**Ph: Liza 0431204 875**  
**Email: adoptasurfcoaster2024@gmail.com**  
**Adopt A Surfcoaster - Christmas 2024**  
**This service discreet, confidential, and anonymous.**

## WANT TO JOIN PROBUS?

**Enjoy fellowship with other members**  
**Enjoy trips & outings**  
**Listen to guest speakers**



**Contact Lorraine**  
**0417 467 927**

## WINCHELSEA LIONS CLUB

**ARE SELLING ENVIRONMENTALLY FRIENDLY SHREDDED PAPER COMPRESSED BRICKS FOR YOUR FIRE**  
**SAVE ON THE RISING COST OF WOOD BY INCLUDING PAPER BRICKS AS WELL**

**PACKET OF 4 ROARS (BRICKS) \$5**  
**ROLL OF PURRS (SMALL ROLLS) \$2**

**AVAILABLE AT LIONS PAPER SHED**  
**36 HARDING STREET**  
**SATURDAY MORNINGS**  
**10AM - 12 NOON**  
**FROM 4<sup>TH</sup> MAY UNTIL SOLD OUT**

**EFTPOS AVAILABLE**  
**CASH ACCEPTED**

# WINCH HOUSE AGM

## Hesse Rural Health's Food Security Project – Auspice by Winchelsea Community House Report 2023/24



Sue Ryan

- \$10,000 funding received from the Give Where You Live Foundation for use over the 2023-24 year. Majority covered the cost of the Food Security Officer working 8 hours a fortnight for funded period.
- The Food Security Coordinator was Hesse Rural Health's Health Promotion Officer – Hannah Walker



- The Food Security Officer assembled a group of 8-10 community members who met 5 times over 6 months.
- This group was known as the Food Access Action Group and comprised a selection of community members who were well connected, had experience working within the food relief sector or had lived experience of food insecurity or were passionate about seeing the project come to life.
- Across the 5 months, the group was presented with a literature review (written by the Food Security Officer) that packaged the various food relief models and their pros and cons. Using this information the group voted anonymously for their preferred model.
- Once the model was selected – a foodbank – the group worked to design everything from the logo, operational hours and days, the location of the foodbank, eligibility criteria and operational processes
- It was initially hoped the foodbank would open early in 2024, however for a multitude of reasons the foodbank did not open until June 2024.
- Reasons for the delayed opening included:
  - Logistics of finding and moving into a venue
  - Establishing an account with Foodbank Victoria – this is a selection process and was slower than usual due to staff turnover at Foodbank Victoria.
  - Recruiting, conducting the relevant checks and onboarding volunteers.

Hesse's volunteer coordinator had resigned, and Hannah was initially waiting for this position to be filled. As it became apparent that the position was not going to be filled quickly, Hannah had to navigate the process of onboarding and registering volunteers.

This was a new and subsequently slow process to begin with.

- More than 20 volunteers have now been onboarded with 15 current volunteers.
- The foodbank has been opening weekly on Fridays between 12-2 and is seeing an average of 40 consumers per week, with a current maximum of 53 consumers through the door.
- When considering the number of people per household, the Winchelsea Community Foodbank is feeding an average of 97 per week. This equates to around 400kg of food and household necessities being distributed each week.
- We are proud that wastage is minimised through:
  - Transporting leftover fresh fruit and veg and bread to the Honest and Free stand on Barwon Terrace
  - Any subpar produce is either moved to the Winchelsea Men's Shed compost or collected by eager community members for their animals
- As we are now in our second year we are excited by being able to continue operating with the success of some additional grants for 2024/2025. These include \$20,000 from the Give Where You Live Foundation and \$25,000 from the Geelong Community Foundation.
- These funds will ensure the continued employment of a Food Security Officer who will be responsible for the ongoing management and growth of the Winchelsea Community Foodbank.
- It is envisioned that the Food Security Officer will support the Foodbank to provide skill and capacity building programs. These programs will teach and empower consumers to grow, prepare and cook their own nutritious food.

Hannah has resigned from Hesse and subsequently the Food Security Officer has been advertised and been successfully appointed. The incoming Food Security Officer will work 2 days a week until June 30th 2025.





# Down to business

## Councillor Tony Phelps (Winchelsea Ward)

The two-week induction is over, with all Councillors finding out a (lot!) more about how local government works from the inside, how Surf Coast Shire is structured and likes to do things, an overview of major/significant activities and projects under way, and a road map of what we Councillors will be getting stuck into over the next 6-9 months.

Our high-priority items are;

- **the 2025-2026 Budget**, for which preparations begin now with a view to having it all done by June 2025 – including opportunities for stakeholders (ie. probably you!) to review and provide input. Be sure to take these opportunities, because this is likely to affect community life around you in some form or another.
- **the 2025-2029 4 Year Council Plan**, which is also getting under way now with a series of Shire pop-ups in various towns aiming to gather ideas, suggestions, thoughts, directions and priorities. Shire staff will be at these pop-ups, and usually a Councillor or two as well. For Winchelsea, the December Community Market had a stall, with another pop-up at Cafe La Hoot on Monday 9th December, 10am-12pm. Please come and see us!

All Councillors have now been assigned to various committees and organisations to continue important relationships both

within the Shire and more broadly to other Councils, levels of Government and related organisations such as through G21. While wards aren't particularly relevant, the Winchelsea Ward Councillors are allocated as follows;

- Cr Adrian Schonfelder, a 6th-generation resident, is on the Geelong Heritage Centre Collection Advisory Committee and sub for G21 Sustainability Pillar
- Cr Joel Grist is on Audit & Risk Committee and sub for G21 Health and Wellbeing Pillar
- I'll be representing Council on the Positive Ageing Advisory Committee, which is all about evidence, ideas and community input on how Council can best create an age friendly Surf Coast Shire – where older people are valued, supported, and empowered to live well. You could say I'm a specialist as I'm the oldest Councillor! I'm additionally sub for the Municipal Association of Victoria, the legislated peak body for local government in Victoria.

So the next 2 weeks see us getting into action and laying the groundwork to democratically decide on the priorities we collectively wish to pursue on behalf of the Surf Coast Shire stakeholders. In other words, more meetings and discussions to come!!

## Council meetings to be held across the Shire in 2025

### Surf Coast Shire

Surf Coast Shire Council has released its Council meeting schedule for 2025, with meetings to be held in all wards of the shire.

The first Council meeting of the year will take place in February with monthly meetings to again be held on Tuesday nights.

The majority of meetings will be held in Council's Torquay offices, with the March meeting to take place in the Otway Range Ward and the August meeting in the Winchelsea Ward.

Otway Range Ward Cr Leon Walker said he was happy to see a meeting being held in both the Otway Range and Winchelsea Wards.

"This is part of making Council and our decision making processes more accessible to people across the shire. Watching these meetings is a great way for residents to see shire issues communicated and resolved whilst understanding the reasoning behind strategic decisions."

"The community is welcome to attend any of our Council meetings either in person or online. They will all be livestreamed with live captions, plus you can watch the recording later," he said.

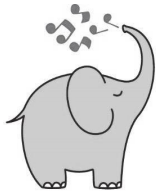


- Tuesday 25 February 2025 6:00pm at Council offices, 1 Merrijig Drive, Torquay.
- Tuesday 25 March 2025 6:00pm - offsite meeting – Otway Range Ward\*.
- Tuesday 29 April 2025 6:00pm at Council offices, Torquay.
- Tuesday 27 May 2025 6:00pm at Council offices, Torquay.
- Tuesday 24 June 2025 6:00pm at Council offices, Torquay.
- Tuesday 22 July 2025 6:00pm at Council offices, Torquay.
- **Tuesday 26 August 2025 6:00pm - offsite Meeting – Winchelsea Ward\*.**
- Tuesday 23 Sept 2025 6:00pm at Council offices, Torquay.
- Tuesday 28 Oct 2025 6:00pm at Council offices, Torquay.
- Tuesday 25 Nov 2025 6:00pm at Council offices, Torquay.
- Tuesday 9 Dec 2025 6:00pm at Council offices, Torquay.

\*Exact locations of offsite meetings to be confirmed closer to the meeting date.

Find out more at [surfcoast.vic.gov.au/meetings](https://surfcoast.vic.gov.au/meetings).





**mainly music**  
est. 1990

Fun, Interactive music sessions for  
pre-school children (0-4 y.o.) and  
parents/caregivers

**When:** Mondays from 10 to 11 am  
(runs during school terms)

**Where:** St Thomas' Hall  
25 Barwon Tce.

To Enquire ring: **0407838256**



Servicing the Surf Coast, Geelong and surrounding areas

**Helios Solar and Gutter Cleaning**

Windows/house cleaning and other odd jobs. Discounts offered to seniors.

<https://helios-solar-cleaning.com.au/>

Call 0493 244 812



**5234 6585 0417 385 984**

For all your septic tank, grease traps  
and interceptor pits servicing.

Locally owned and operated

**DAVIC AG**

**CONTRACTING AND EARTHMOVING**

For all your harvesting needs

Mowing, raking, round bailing, paddock prepping, spreading and sowing

Call Dave on **0417 579 973** Bambra



**Your Taxation  
&  
Superannuation  
Specialists.**

Winchelsea

**5267 2673**

**[www.surftax.com.au](http://www.surftax.com.au)**

ver19 10064

**OZ TREES NURSERY  
& TREE PLANTING SERVICES**

- Affordable seedlings—over 200 species
  - Complete plantation service—farm forestry, shelter, aesthetics
  - Deep ripping & mound ploughing. Rotary bed forming
  - Our experienced staff will help you select species for your site conditions and needs
- Also available—tree planting tools, milk cartons, plastic tree guards & bamboo stakes



569 Warrowie Rd. Colac  
P: 5233 6280 F: 5233 6393  
E: [info@oztrees.com.au](mailto:info@oztrees.com.au)  
W: [www.oztrees.com.au](http://www.oztrees.com.au)  
Open Monday—Friday  
9am—4:30pm

Phone OzTrees for professional advice,

**mels**  
DANCE CENTRAL  
Est. 2011

**Dance  
ENROLMENTS  
NOW OPEN!**  
Winchelsea  
Dance Classes  
**REGISTER NOW**

JAZZ - THEATRICAL TAP - HIP-HOP  
CLASSICAL BALLET - CONTEMPORARY  
Pre-School - Adults  
Beginner - Advanced Levels

**[www.melsdancecentral.com.au](http://www.melsdancecentral.com.au)**

**direct  
TEMPORARY  
FENCING**

FOR HIRE - SUPPLIED & ERECTED - 7 DAYS  
GEELONG - BELLARINE - COLAC - SURF COAST  
PHONE CAM 0417 310 800

**DownRyte Excavations**

- Excavations
- Drilling and Piling
- Rock Placement
- Tree and Stump Removal

Sean Hunwick  
Mobile: 0409 447 288  
Email: [downryte@activ8.net.au](mailto:downryte@activ8.net.au)



# International Day of People with Disability – celebrating achievements, striving for inclusion

## Surf Coast Shire

Surf Coast Shire Council activities celebrating International Day of People with Disability will include an art exhibition, fun inclusive storytime for kids, and sharing of insights from people with lived experience of disability.

IDPwD, on 3 December increases public awareness, understanding and acceptance of people with disability and celebrates their achievements and contributions.

The 2024 theme is 'amplifying the leadership of persons with disabilities for an inclusive and sustainable future'.

Councillor Leon Walker said Council's activities would help educate and inspire community members. "International Day of People with Disability provides us with an important time to recognise and celebrate the achievements and contributions of people living with disability and increase understanding and acceptance," Cr Walker said. "But it also reminds us that we should be striving year-round to improve access and inclusion, helping to ensure that everyone can take part in our community and get the services they need, no matter their abilities."

About Surf Coast Shire Council 2024 IDPwD activities:

### Lynda Dingley 'Harmonious Storm' art exhibition

Anglesea Art Space, 21 Nov to 8 Dec, open 11am-4pm Thursday to Sunday. Opening event Sat 30 November 3.30pm. Award-winning artist Lynda Dingley works in acrylics on canvas, watercolours and inks on paper. Her work blends Indigenous art and realistic painting, featuring memories and dream-like themes.

She says the title of her latest exhibition Harmonious Storm expresses something of two major influences which add expression to her work – her First Nations heritage and relationship with the land, and perspective shaped by 15 years living in a wheelchair. "Just as the land transforms through cycles of erosion, growth and reshaping, life in a wheelchair brings its own adaptive journey," Lynda says.

"Navigating the world in a wheelchair involves adapting to different terrains and embracing resilience. Both the land and the journey in a wheelchair share a story of constant change and strength, finding harmony amid the storm." Lynda says art has helped give her a voice and a means of expressing herself in a world which too often overlooks people living with disability.

### Inclusive storytime for children at Torquay Library

In association with Geelong Regional Libraries, Thursday 5 December, 10.30am-11am. The engaging and fun inclusive storytime will feature library staff leading songs, supported by an Auslan interpreter, and disability advocate and author Renee D'Offay signing a storybook in Auslan,

Renee became profoundly deaf at 19 after having contracted meningococcal meningitis. Two decades on she is a mum,



Artist Lynda Dingley

Auslan educator, teacher of the Deaf and a passionate disability advocate. She says inclusive storytimes with positive representations of, and interactions with, people with disability can help children understand the challenges others might be dealing with – that everybody is different and can have different needs.

### Insights from people with lived experience of disability

During the first week of December Council will share a series of social media posts featuring artist Lynda Dingley and Council All Abilities Advisory Committee members Timothy Harte, Cheryl Middleton and Penny Cilento.

Each will reflect on their inspirations, and share messages about improving inclusion in our community.

The All Abilities Advisory Committee (AAAC) comprises community members, Cr Leon Walker and Council officers and advises Council on ways to improve access and inclusion for people with disability.

The committee meets six times a year and is seeking expressions of interest from new members with experience living with disability or as a carer for someone living with disability.

People can visit [surfcoast.vic.gov.au/Community/Access-for-all](https://surfcoast.vic.gov.au/Community/Access-for-all) to:

- Find more information about Council's IDPwD activities and register for the library storytime session
- Learn more about the AAAC and make an expression of interest for membership.
- Register to receive Council's regular access and inclusion newsletter.



**Winchelsea Community House Inc.** A6247K  
 28 Hesse Street, PO BOX 75, WINCHELSEA, Vic. 3241  
 Phone: (03) 5267 2028 Email: [manager@winchhouse.org.au](mailto:manager@winchhouse.org.au)  
 ABN: 48 932 340 254



**AT THE WINCHELSEA SHIRE HALL  
 FRIDAY NOVEMBER 29TH 5.30PM - 9PM**

**WELCOME DRINK ON ARRIVAL, TASTY HONDURAN APPETISERS  
 AND MAIN DISH OF YOUR CHOICE!  
 ADULTS \$40 KIDS \$15**

**ONE WEEK LEFT TO BOOK YOUR SEATS!**

**LACASETA.COM.AU/MARKETS  
 OR EMAIL SHIREHALL@WINCHHOUSE.ORG.AU**

#### Menu

##### ADULTS

**BEEF CHILLI CON CARNE NACHOS, GF**  
 with sour cream, guacamole and pickled onions. DF option available.

**BBQ JACKFRUIT NACHOS, GF, Vegetarian or Vegan**  
 with coleslaw, pickled onions, coriander and mayo dressing.

**CHIPOTLE CHICKEN BURRITO**  
 with Sour cream, chilli oil, pickled onions and guacamole.

**BRAISED BLACK BEAN BURRITO, Vegetarian or Vegan**  
 Side of sour cream (coconut yogurt for vegan option) Chilli oil, pickled onions & guacamole.

##### KIDS

**CHEESE QUESADILLA**  
 Side of Sour cream or Guacamole.

**HONDURAN VEGGIE RICE, GF, DF, Vegan**

#### Music

#### Food

#### Drinks

#### Kids Table

#### Pinata

#### Limbo

#### Community

**Always wanted to learn to learn to Knit?**

### WINCHELSEA KNITTING GROUP

**Thursday Mornings**

**10.30 – 12pm**

**FREE Community group.**

All welcome, come along and learn to knit or bring a project to work on whilst enjoying a cuppa and a chat.

Winchelsea Community House

### CHATTY CAFÉ

**“Sip, Chat, Share, Care”**

**Every Friday 10.30am – 12.30pm**

Winchelsea Shire Hall

**FREE, Everyone Welcome.**

Collection tin for donations.

### Carers Corner

Come along, connect with other carers, have a cuppa and a chat, and share useful resources.

**29<sup>th</sup> Nov  
 11.00am – 12 noon**

At the Winchelsea Shire Hall  
 Collection tin for donations.

### Tai Chi

**Friday Mornings 9.00am – 10.00am**

In the Helen Verity Room,  
 Winchelsea community house

**\$10 per session**

### Crochet Group

Every Second Saturday

1.30pm in the Winchelsea Community  
 Centre

**Next Group 16th Nov**

**\$5 per class**

Book your spot at [reception@winchhouse.org.au](mailto:reception@winchhouse.org.au)

## WE NEED YOU!



**EVENTS  
 GARDENING  
 CHILDCARE**

**VOLUNTEER at Winch House and/or  
 the Shire Hall, GET INVOLVED, in your community,  
 LEARN NEW SKILLS, MAKE A DIFFERENCE.**

**The Winchelsea Community House aims to provide a space to connect with others in our  
 community through a wide range of programs and activities.**

**There are many opportunities to learn new skills or further develop existing ones for fun, for your  
 resume or for your confidence and mental health.**



# Winchelsea's beekeeping engineer

## Michelle Day

My name is Michelle and I reside at Winchelsea with my husband Justin.

I don't believe I am being biased; I think Justin is a very interesting person. He works as a Mechanical Engineer for Bosch at the Australian Automotive Research Centre in Wensleydale.

In his spare time, Justin is busy enjoying his hobby as a self-taught beekeeper (please see photos). Justin is a passionate educator who has introduced many people to beekeeping and whom he continues to mentor.

Justin is also passionate about raising awareness of the impending threat of the varroa mite and non-chemical control methods.

During Spring Justin is busy removing swarms from farming and residential properties, which he rehomes and registers for honey production.

Justin also utilises his hives to work alongside farmers and orchardists to improve local crop production. Beyond Spring, Justin inspects his hives routinely & extracts honey when the climatic conditions are favourable.

Being an engineer, Justin is always looking for ways to improve hive design to best support the health of the bees.

Justin has recently applied his problem solving skills to a Warré hive of which the design principals are aligned to naturally occurring hives. To top it all off, Justin doesn't mind fitting in a surf when he can.



## Avian influenza control area at Meredith reduced

### AgVic

Agriculture Victoria has reduced the size of the control area around Meredith that was put in place for the current H7 avian influenza outbreak.

Two more properties in the Meredith area had their quarantine status lifted on 12 November. Four properties remain under the last stages of quarantine.

From Tuesday 19 November 2024, the Meredith control area has been significantly reduced in the north and east and trimmed in the south to remove all the town of Bannockburn.

Eight properties were confirmed to have a high pathogenicity H7N3 and H7N9 strains of avian influenza earlier this year.

No new avian influenza cases have been detected since 24 June 2024.

If you are a poultry farmer, backyard flock owner or bird owner, report any unexplained bird deaths to the Emergency Animal Disease (EAD) Hotline on 1800 675 888.

Your cooperation is crucial in protecting the health of all birds in the area.



## Winchelsea Men's Shed



### For The Community

**Men's Shed Kindling/Offcuts**  
Bags of Kindling/timber offcuts are available for pick up from the Men's Shed on Wednesday's from 9.30 to 2.30.

If you need a delivery made you can call Bill on 0438 083 373. The price for a bag of kindling is now \$7.00 (up from \$5.00).

### Nesting Boxes

Bird or animal nesting boxes are available from The Men's Shed.

These can be made to order.

Call in on any Wednesday to have a chat.



5234 6585 0417 385 984

For all your domestic & stock water.  
Also available for road and civil construction  
Local owned and operated.

52672192 **R & K Creative Framing**  
for all your framing needs

free quotes  
pension discount  
specialist in Age & Disability Modifications

Ray & Kim Jansen  
10 Witcombe st  
Winchelsea 3241  
0414672192

Ray The Home  
Maintenance HANDYMAN  
abn 47928623462



## Winchelsea Supermarket

Trading Hours

**Monday to Saturday**

8.30am to 7.30pm

**Sunday**

10am to 7pm

**Ph: 5267 2676**

29 Main St, Winchelsea

## Antique Repairs

By **Doug Burns** est. 1976

- All Furniture
- French polishing
- Carving
- Veneering
- Wood Turning
- Porcelain



*Unusual Requests Welcome*

180 Barwon Terrace, Winchelsea

**0428 672 704**

*All About* **Mowers & Chainsaws**

Repairs to all makes and models of ride on mowers, domestic mowers, pumps, chainsaws, brushcutters and small engines.

Trading Hours: Mon - Fri 8am - 5pm Saturday 8am - 12 noon

**5267 2266** Cnr Princes Hwy & Lennox St Winchelsea

www.allaboutmowers.com.au  
accounts@allaboutmowers.com.au

FERRIS COX STIHL BRIGGS & STRATTON VICTA

# SOUTHERN

# GRAIN

STORAGE PTY. LTD.

AG SUPPLIES FERTILISER GRAIN STORAGE SEED CLEANING

(03) 5267 2351

## WINCHELSEA CONCRETING

• Driveways • Sheds • Decorative Concrete • Raft Slabs

Robert Murphy

☎ 0438 235 237

✉ winchelseaconcreting@outlook.com

# MRP

## Steelworx

Matthew Partridge  
p 0418 672 334  
e mrpsteelworx@yahoo.com.au

Welding Service

- Onsite welding
- Farm maintenance
- Farm machinery & equipment repairs
- Cattle & sheep yards
- Custom built trailers
- Supply & install gates



# SERVICES & ACTIVITIES IN WINCHELSEA

## VLINe TRAIN SERVICES

### TO MELBOURNE:

Mon - Fri 6:41 am, 7:57am, 11:14am, 2:08pm, 7:23pm  
Sat - Sun 9:26am, 1:30pm, 7:18pm

### TO WARRNAMBOOL:

Mon - Fri 8:56am, 11:55am, 2:50pm, 5:27pm,  
6:45pm, 8:50pm  
Sat - Sun 8:47am, 2:46pm, 8:34pm



## WINCHELSEA GIRL GUIDES

Our Unit meets at the Catholic Church Hall,  
Harding St Winchelsea each Monday 4.30pm-6pm  
All girls 5yrs- 15yrs Welcome!  
Contact Yvonne Orchard 0448 672 630  
or Emily LaPorte Phone 0476 719 381



## 1st Modda & 1st Winchelsea SCOUT GROUP

**Joeys:** Tuesdays of school term 5-6pm  
**Cubs:** Mondays of school term 6:30-8pm  
**Scouts:** Tuesdays of school term 6:30-8:30pm  
All at Modewarre Hall, Cape Otway Rd  
**Venturers:** Wed at Walton's Rd Venturer Den  
Contact Marie McPadden 0409 330147



## COUNTRY WOMEN'S ASSOCIATION

7pm second Wednesday of month  
Winchelsea Senior Citizens' Hall

**Join us.** *A role for everyone*



Nationally accredited training to help our community.  
Pop in to meet your crew **Wednesdays 7:30pm**

**Winchelsea Unit** 325 Mousley Drive **132 500**

## BUS TO THE HUB



For reservations on the weekly bus  
to the Eastern Reserve Hub,  
please phone 52671202.

## Winchelsea and District COMBINED PROBUS CLUB



Senior Citizens Rooms,  
Harding St, Winchelsea.  
New members always welcome.  
Enquiries Lorraine 0417 467 927

## SURF COAST MOBILE LIBRARY

**Hesse St, Fridays, 2pm-5pm**  
Surf Coast Mobile Library  
parked in Hesse Street (outside Shire Hall)  
Fridays 2:00 and 5:00pm unless it is a Public Holiday.



**SOCIAL BRIDGE**  
Every Tuesday 10.30 am - 1.00 pm  
Senior Citizens Centre  
36 Harding Street Winchelsea  
New players always welcome  
Contact Elaine Atkinson 0458009616

## WINCHELSEA TAXI

0429 672 888 or 5267 2888  
Wheelchair accessible  
10 seater bus available.

## WINCHELSEA TRANSFER STATION

55 Cressy Road, Winchelsea

Tuesday	2pm-4pm	Saturday	1.30-3.30pm
Thursday	2pm-4pm	Sunday	9.30-12.30pm

Closed on Christmas Day,  
but open on other public holidays  
that fall during their normal operating hours.  
[www.surfcoast.vic.gov.au/disposalsites](http://www.surfcoast.vic.gov.au/disposalsites)



## WINCHELSEA PLAYGROUP

Every second Thursday 10am-12pm  
St Thomas Anglican Church Hall  
cnr Barwon Tce and Hopkins St, Winchelsea  
Contact: Danni Menzies 0432019944  
[winchelseaplaygroup@gmail.com](mailto:winchelseaplaygroup@gmail.com)  
Facebook - Winchelsea Playgroup 2019  
**New families welcome**



# WINCHELSEA FACEBOOK

## Non-profit community Groups and Pages



What's on in Winchelsea	<a href="https://facebook.com/WhatsoninWinchelsea">facebook.com/WhatsoninWinchelsea</a>
Winchelsea FREE	<a href="https://facebook.com/groups/winchelseafree">facebook.com/groups/winchelseafree</a>
Winchelsea Community Information	<a href="https://facebook.com/groups/207538644446972">facebook.com/groups/207538644446972</a>
Winchelsea Classifieds 3241	<a href="https://facebook.com/groups/216942861684082">facebook.com/groups/216942861684082</a>
Winchelsea Lost and Found	<a href="https://facebook.com/groups/768187693217518">facebook.com/groups/768187693217518</a>
Winchelsea Op Shop	<a href="https://facebook.com/HospitalAuxiliaryOpShopWinchelsea">facebook.com/HospitalAuxiliaryOpShopWinchelsea</a>
Winchelsea Shire Hall	<a href="https://facebook.com/WinchelseaShireHall">facebook.com/WinchelseaShireHall</a>
Winchelsea Community House	<a href="https://facebook.com/winchelseacommunityhouse">facebook.com/winchelseacommunityhouse</a>
Winchelsea Coronavirus Community Support Group	<a href="https://facebook.com/groups/2676957719207927/">facebook.com/groups/2676957719207927/</a>
The Green Winchelsea Residents	<a href="https://facebook.com/groups/515322772623126">facebook.com/groups/515322772623126</a>
Growing Winchelsea Inc	<a href="https://facebook.com/growingwinch">facebook.com/growingwinch</a>
Winchelsea Star	<a href="https://facebook.com/TheWinchelseaStar">facebook.com/TheWinchelseaStar</a>
Winchelsea Movie Club	<a href="https://facebook.com/winchelseamovies">facebook.com/winchelseamovies</a>
Winchelsea Community Market	<a href="https://facebook.com/100083362387611">facebook.com/100083362387611</a>
Winchelsea Land and River Care Group	<a href="https://facebook.com/envirowinchelsea/">facebook.com/envirowinchelsea/</a>
Upper Barwon Landcare Network	<a href="https://facebook.com/UpperBarwonLandcare">facebook.com/UpperBarwonLandcare</a>
Winchelsea & District Historical Society Inc	<a href="https://facebook.com/Winchelseaanddistricthistoricalsociety/">facebook.com/Winchelseaanddistricthistoricalsociety/</a>
Winchelsea Wildlife Shelter	<a href="http://www.winchelseawildlifeshester.com/">www.winchelseawildlifeshester.com/</a>
SCARS - Surf Coast Animal Rescue Service	<a href="https://facebook.com/groups/415211698950674">facebook.com/groups/415211698950674</a>
Winchelsea Gardeners	<a href="https://facebook.com/groups/779878518703025">facebook.com/groups/779878518703025</a>
Winchelsea & District Historical Society	<a href="https://facebook.com/Winchelseaanddistricthistoricalsociety/">facebook.com/Winchelseaanddistricthistoricalsociety/</a>
Winchelsea Repertory Society Inc	<a href="https://facebook.com/winchrep/">facebook.com/winchrep/</a>
Winchelsea Globe Theatre	<a href="https://facebook.com/Winchelsea-Globe-Theatre-164790897641678">facebook.com/Winchelsea-Globe Theatre-164790897641678</a>
Winchelsea Uniting Church	<a href="https://facebook.com/winchelseaunitingchurch">facebook.com/winchelseaunitingchurch</a>
St Thomas' Anglican Church	<a href="https://facebook.com/StThomasWinchelsea">facebook.com/StThomasWinchelsea</a>
St John the Baptist Catholic Church	<a href="https://facebook.com/pages/Winchelsea-Catholic-Church/101775670163180">facebook.com/pages/Winchelsea-Catholic-Church/101775670163180</a>
Winchelsea Mainly Music	<a href="https://facebook.com/groups/668500343953191/">facebook.com/groups/668500343953191/</a>
Winchelsea Health Club	<a href="https://facebook.com/WinchelseaHealthClub">facebook.com/WinchelseaHealthClub</a>
Winchelsea Playgroup (School terms only)	<a href="https://facebook.com/groups/551663435367031">facebook.com/groups/551663435367031</a>
Winchelsea Girl Guides	<a href="http://www.guidesvic.org.au/">www.guidesvic.org.au/</a>
Winchelsea/Modewarre Scouts	<a href="https://facebook.com/1stModewarreScouts">facebook.com/1stModewarreScouts</a>
Winchelsea Fire Brigade	<a href="https://facebook.com/winchelseafirebrigade/">facebook.com/winchelseafirebrigade/</a>
Winchelsea SES	<a href="https://facebook.com/groups/WinchSES">facebook.com/groups/WinchSES</a>
Country Women's Association - CWA Winchelsea	<a href="https://facebook.com/pg/CWAWinchelsea/">facebook.com/pg/CWAWinchelsea/</a>
Winchelsea Bowls Club	<a href="https://facebook.com/Winchelsea-Bowls-Club-533783333344345/">facebook.com/Winchelsea-Bowls-Club-533783333344345/</a>
Winchelsea Blues Cricket Club	<a href="https://facebook.com/groups/8999049476/">facebook.com/groups/8999049476/</a>
Winchelsea Blues FC	<a href="https://facebook.com/WinchelseaFNC/">facebook.com/WinchelseaFNC/</a>
WYLD Winchelsea Youth Leisure and Drop in	<a href="https://facebook.com/groups/569737570027065/">facebook.com/groups/569737570027065/</a>
Lions Club of Winchelsea	<a href="https://facebook.com/LionsWinchelsea">facebook.com/LionsWinchelsea</a>
Winchelsea Probus	<a href="https://facebook.com/893535194971083">facebook.com/893535194971083</a>
Winchelsea Golf Club	<a href="https://facebook.com/winchelseagc/">facebook.com/winchelseagc/</a> <a href="https://facebook.com/groups/1324943804676697">facebook.com/groups/1324943804676697</a>



# Watch for heating hay!

Michele Jolliffe, Agriculture Victoria Dairy Extension Officer - Hamilton



Every hay season several hay stacks spontaneously combust across Victoria, in single moist bales or in a stack of any size.

Once the hay has been stacked it's important to regularly monitor it for heating and act quickly.

Unfortunately, even with technological advances in machinery for harvesting conserved fodder, there is still nothing cost effective to help monitor the internal temperatures of haystacks.

So, it's back to some very simple techniques to keep an eye on your hay stacks.

## Watch for signs of heating

Keep an eye out for signs that haystack is heating. Steam condensation on the shed roof, mould growth, acrid fumes and hot, humid air at the top of the stack are all good indicators.

When building stacks with suspect wet hay, stack the bales loosely to allow air movement and spread the stack over a wider area, for example, over several bays, thereby reducing heat build-up.

Most heating will occur over the first 1 or 2 weeks but has been known to reach 'flash point' up to 8 weeks after baling. Monitor the stack temperature regularly.

## Determine the stack temperature

Stack temperature can be measured using a crowbar inserted as deep as possible into the stack and left for 2 hours. After 2 hours, the crowbar can be removed and felt by hand to give you a rough guide of the internal stack temperatures.

The temperature of the bale is up to about 50°C if you can hold the crowbar without discomfort. It is up to 60°C if the bar can be held for a short time only and up to 70°C if the bar can only be

touched briefly. If you can't hold the bar, temperature is above 70°C and fire is a real possibility. Treat the stack with caution.

In the past it has been suggested to push a small pipe into the stack and lower a small thermometer to the end of the pipe to measure the temperature of warming hay. However, this technique should not be used for severely heating hay as it may oxygenate the inner section of the stack and cause a fire to start.

## What can be done if the stack heats to danger levels?

If a stack starts to get 'dangerously hot' pull it apart as quickly as possible.

Be aware that as the bales are pulled out of the stack, especially in a tightly built stack, oxygen will now get access to the hot spot and potentially cause ignition.

Make sure that water is readily available and suitably qualified people able to assist in fire suppression if required.

## Safety Warning!

Avoid walking on the stack as the extremely high temperatures may have charred the centre of the stack. Any extra weight on the stack may cause the stack to collapse into the dangerously hot centre and cause serious injury.

If there is the slightest risk of a fire starting due to wet hay, never keep machinery in the hayshed and don't allow children to play in or near heating stacks.

The Country Fire Authority website has good information about hay fire risk. Search 'hay fires' at [www.cfa.vic.gov.au/](http://www.cfa.vic.gov.au/)

For more information about dry seasonal conditions and drought support visit [agriculture.vic.gov.au](http://agriculture.vic.gov.au) or call 136 186.

# Thunderstorm Asthma forecast HIGH

## Victorian State Government

Victoria's Chief Health Officer advises there is currently a high risk of epidemic thunderstorm asthma for the North Central and West and South Gippsland districts.

The combination of forecast high grass pollen levels and a certain type of thunderstorm with strong winds means that there is a chance that a large number of people may develop asthma symptoms over a short period of time.

Health and emergency services are monitoring the situation closely and are ready to respond.

People with asthma, spring hay fever, and those with undiagnosed asthma are at increased risk and should avoid the wind gusts before and during the storm by going inside and closing your windows and doors and turning off air conditioners that bring in air from the outside (ie evaporative air conditioners).

People with asthma should have their reliever medication with them at all times today and review their asthma action plan.

Those with spring hay fever should learn asthma first aid and have ready access to an asthma reliever at short notice.

**If you feel unwell, call 'Nurse on Call' on 1300 60 60 24, visit the Victorian Virtual Emergency Department at [www.vved.org.au](http://www.vved.org.au) or see your local doctor if you require medical advice.**

**Call triple zero (000) immediately if someone is not breathing, if their asthma suddenly becomes worse or is not improving, or if the person is having an asthma attack and a reliever puffer is not available.**

For up-to-date information visit the VicEmergency website or download the VicEmergency App.

More information on how to protect yourself and those around you visit the Better Health Channel.

# Australia's best Food And Wine Festival is back

Victorian State Government

Melbourne is Australia's culinary capital, and the Allan Labor Government is backing another incredible year of the Melbourne Food & Wine Festival.

Minister for Tourism, Sport and Major Events Steve Dimopoulos today unveiled the 2025 program, announcing that the 10-day festival, from 21 to 30 March, will include more than 200 events across Victoria.

The Festival will kick off with the World's Longest Lunch in Melbourne's Kings Domain, where Melbourne-born chef Curtis Stone will create a three-course feast for hundreds of diners, on a row of tables more than 600 metres long.

Twenty international chefs are making their way to Victoria for the 2025 festival, bringing their creative food ideas from around the world with them. The festival is also brimming with Victorian and Australian chefs who will tantalize and entertain food lovers of all ages.

The reimagined World's Longest Brunch, led by author Julia Busuttill Nishimura, will give diners the chance to choose from delicacies at three stops around the Royal Botanic Gardens – including lemon mascarpone tarts at Tecoma Pavilion, chive pancakes at Taxodium Lawn and roasted apricots with labne at The Alto on Dog Flat.

Fed Square will host the Baker's Dozen, which brings Melbourne's top bakers together for a two-day celebration of cakes and pastries.

The Melbourne Food & Wine Festival provides a major boost to the state's tourism and hospitality sector, and is just one of many major blockbuster events across Victoria including the Australian Open, the Formula 1 Grand Prix and the Yayoi Kusama Exhibition at the NGV – all contributing to Victoria's \$39.2 billion visitor economy.

Program information is available at [mfwf.com.au](http://mfwf.com.au).

# A better life for retirement village residents

Victorian State Government

The Government is delivering stronger protections for retirement village residents. The Minister for Consumer Affairs has introduced the Retirement Villages Amendment Bill into Parliament to deliver reforms to help current and future residents make informed choices about entering, living in, and leaving a village of their choice.

Consumer Affairs Victoria will have stronger powers to regulate retirement villages, including requiring operators to provide information and more enforcement options.

Retirement village contracts will be standardised and clearer about entry and exit processes. There will be stronger controls on how exit fees are calculated and a requirement for annual contract checks so residents understand their obligations.

For all new contracts, entitlements will need to be paid within 12 months of leaving. Operators and residents will equally divide any gains and losses when a unit is sold, ensuring residents do not bear a higher proportion of loss.

The Bill will also require villages to prepare emergency management plans and undertake annual evacuation exercises.

Dispute resolution processes will be strengthened and a new dispute resolution service set up in the Department of Government Services. This will help resolve less complex disputes between operators and residents, or between residents.

More serious disputes, particularly around termination of contracts, and disputes over significant financial matters can be referred to VCAT.

The Commissioner for Residential Tenancies's role will be expanded to support research, advocacy and advice to government on the retirement villages sector.

In 2025, a mandatory Retirement Villages Code of Practice will be developed in consultation with the community and retirement village sector. The Bill has taken into consideration extensive stakeholder feedback from residents, their families, industry and consumer advocates.

## Winchelsea Men's Shed



For The Community

51 Hesse Street

Every Wednesday from 9:30am

New members always welcome

For more detail contact:  
Ray Atkinson (Co-ordinator)  
0407 839 139  
or  
[winchmenshed@gmail.com](mailto:winchmenshed@gmail.com)

Need a job done?  
Woodworking jobs,  
furniture repairs, small jobs.  
Drop in and talk to us.

## WINCHELSEA LIONS CLUB

**PAPER  
RECYCLING**

Paper depot rear of  
Senior Citizens Rooms  
Harding Street  
NEWSPAPERS,  
MAGAZINES,  
PHONE BOOKS WANTED



RAISING FUNDS FOR  
OUR TOWN & DISTRICT  
0408 520 606

## Knuckey's Winchelsea Ph: 5267 2011

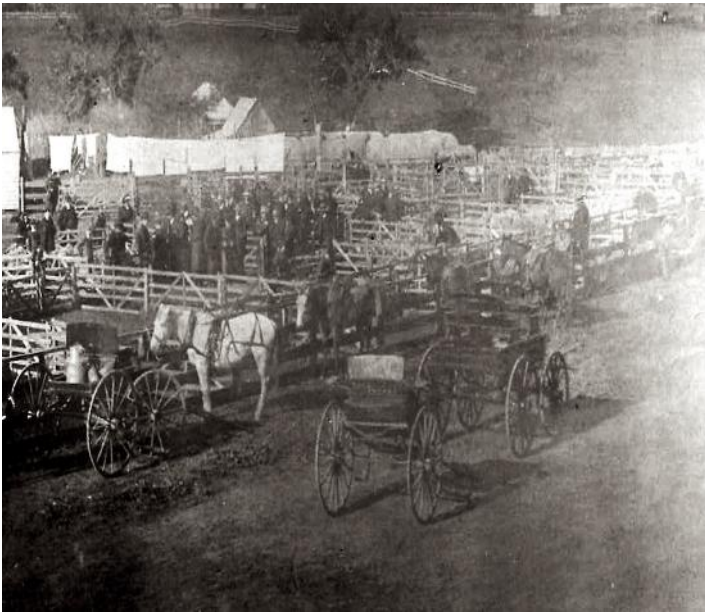
Knuckey's have in stock a complete range of batteries to suit tractor, heavy machinery, cars, utes

The largest range of the best oil for your vehicles—**CASTROL**—  
*'when only the best will do'*

The largest range of V belts.  
A, B, C, D M Sections  
Bolts and nuts for all occasions  
Steel cut to size



# WINCHELSEA SALEYARDS WINCHELSEA POLICE STATION



## Sandra Jones

We have a large collection of artefacts and photos in our collection but very few in some areas - so we are posting this week some photos of the things we know very little about hoping someone out there may be able to help us.

## WINCHELSEA SALEYARDS

### WINCHELSEA POLICE STATION

We know the first station was in 1864 at Dwyer Street, the second at 53 Main Street and the present one at 15 Hesse Street. The old house and lockup moved to B.Y.V Woolstore, Colac Road 9/9/1986.

We have a book produced by Kevin Bennett of all the police men and women - plus a little detail of some old cases but would like more information please.



# WINCHELSEA HISTORICAL SOCIETY

Hesse Street Cnr Princes Highway Winchelsea 3241  
OPEN Wednesdays 1 - 4pm, Fridays 10 - 3pm

**APOLOGY** The photo in last week's Star was MOOLERIC, instead of Wormbete.



Café La Hoot

have you tried  
'owl' coffee?

1 willis st cafe@hoot@gmail.com 0407 528 999

## TRENCHES & HOLES PTY LTD.



**PHILLIP ROBERTSON**

**☎ 0427 672 945**

**WINCHELSEA**

- General Earth Works
- Driveways
- Trencher
- Kanga Loader
- Grader
- Excavator Work (3.5 & 6.5 Tonne)
- Tip Truck
- Rock Breaker
- Post Holes & Shed Footings

A.B.N 74006896898

Water Delivery



**WAZZA'S**  
WATER CARTAGE

Stainless Tanker Up to 22,000 ltr loads  
Barwon Water Registered

Domestic & Rural Water Supplies

Call Wazza

Mob: 0428 877 260

Email: wazza@wazzas.com.au Web: wazzaswater.com

**M & L DRAYTON**

**PLUMBING SERVICES**

REG No 24356 C/A No C02594

- Domestic and Rural Plumbing
- Roofing
- Sewerage & Septic
- LPG & Natural Gas Connections
- Motorised Drain Cleaning
- Backhoe Hire

**Phone Mark 5288 7244**

PO BOX 98 WINCHELSEA 3241

**Mobile 0428 520 142**



- DECKS - SAUNAS  
- FLOORING - PERGOLAS  
- WEATHERBOARDS  
- HORSE SHEDS  
- CLADDING - FENCES  
ALL THINGS TIMBER AND MORE...

INSTAGRAM guim\_designs

CALL PAT ON

**0401 232 674**



## Mosquito management program underway

### Surf Coast Shire

Surf Coast Shire Council has started its annual mosquito management program, including treatments using approved environmentally friendly larvicides around townships.

The monitoring involves setting traps around known mosquito breeding sites and sending captured mosquitos to a laboratory. Tests determine species type and if they are carrying diseases.

“Mosquitoes are a natural part of the eco system and it’s not possible to eliminate all mosquitoes. Our program reduces mosquito numbers and their impact on the community” said Damian Waight, General Manager Community Life. “In addition to Council’s program, residents can take steps around the home to control numbers”.

To help reduce mosquitoes around your home:

- Remove stagnant water in gutters, bird baths, ponds, old tyres, pot plants, buckets and toys.
- Ensure openings to rainwater tanks are covered with mesh.
- Put sand around bases of pot plants to absorb excess water.
- Keep roof gutters in good repair and remove leaves and debris so pools of water do not form.
- Make sure your swimming pool, spa and fish pond are well maintained.

To protect yourself and your family:

- Wear light coloured, loose fitting clothing that covers your arms and legs. Mosquitoes are attracted to dark colours.
- Use effective mosquito repellents on all exposed areas.
- Ensure windows and doors are fitted with flywire screens.

For more information about the mosquito monitoring program visit [surfcoast.vic.gov.au/mosquitoes](http://surfcoast.vic.gov.au/mosquitoes).

**CHRISTMAS POP UP SHOP  
OPEN HOUSE**

**Sunday 8th December**  
**From 10 am to 5 pm**  
**9 Newman Place, Winchelsea**

**FOR SALE**

- Handmade Christmas trees - 30cm
- Ideal for Christmas party table centrepieces
- Ferrero Rocher, Lindt, chocolate and lolly creations
- Shabby chic home decor
- Ladies summer / winter clothing Sizes 10 to 18
- Handbags, scarves and ladies shoes
- Costume jewellery

Cash or Pay ID available  
Payment plan available for larger orders

## Re-registration of New Democrats

### Victorian Electoral Commission

New Democrats has been re-registered as a political party under Victorian electoral law.

As required by section 58A of the Electoral Act 2002, the party applied for re-registration on Thursday 24 October.

To be registered, a party must have at least 500 eligible members on the Victorian electoral roll. The Victorian Electoral Commission (VEC) confirmed this by contacting members whose names were provided by New Democrats.

As a registered political party, New Democrats will continue to:

- have the party’s name printed next to its endorsed candidates’ names on state election ballot papers
- be able to nominate all its candidates centrally with the VEC instead of with individual election managers
- be entitled to public funding based on the number of votes it receives at a state election
- be entitled to access enrolment information, not including phone numbers or email addresses, which it can use for permitted purposes.

## Getting knives off Victorian streets

### Victorian State Government

The Government will get knives off Victorian streets with strengthened laws introduced into Parliament that will give Victoria Police more powers to crackdown on knife crime. The Terrorism (Community Protection) and Control of Weapons Amendment Bill 2024 will allow police to search and seize weapons without a warrant with less notice and for longer periods of time.

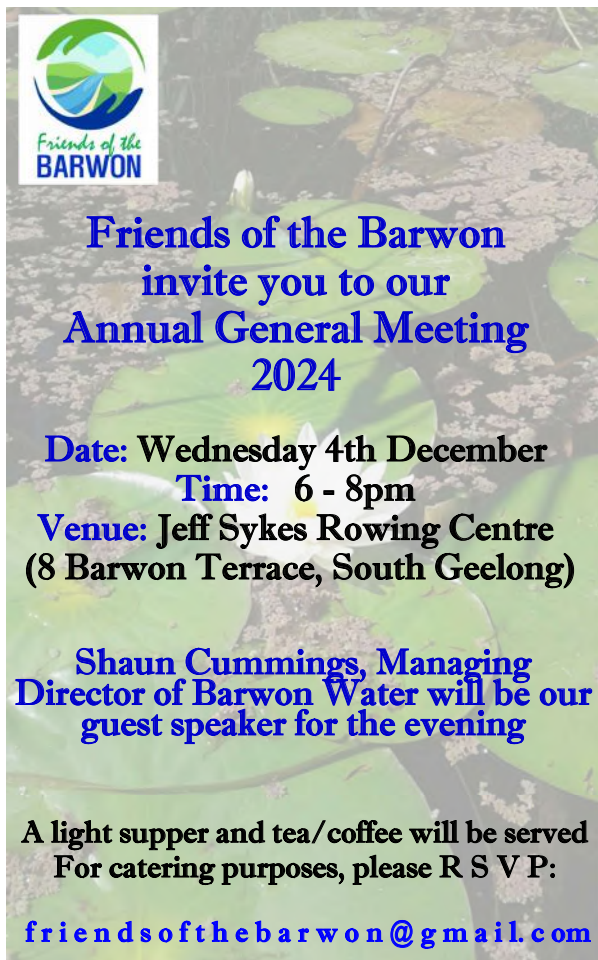
This Bill will give police power to make a planned designated area declaration where there is a likelihood that violence involving the use of weapons will occur.

Restrictions requiring police to only exercise powers to search without a warrant for weapons during an event will also be lifted. Instead, the Chief Commissioner will be able to nominate specified times before and after an event where they can exercise search powers within the designated area. This will allow planned event declarations to operate while crowds gather and disperse before and after events.

The minimum time between declaring planned designated areas will also be reduced from 10 days to 12 hours – ensuring criminals can’t evade police searches.

Additionally, the maximum time a designated area can operate will increase from 12 hours to 24 hours.

The Bill will also remove the requirement for notices of planned designated areas to be published in a daily Victorian newspaper, these will now be published on the Victoria Police website.



## Friends of the Barwon Annual General Meeting Wednesday 4 December 2024

A reminder that the FOTB Annual General Meeting is being held on Wednesday 4th DECEMBER 2024 from 6-8pm at the Jeff Sykes Rowing Centre, Geelong.

Our guest speaker for the evening will be Shaun Cummings, Managing Director, Barwon Water. Shaun's presentation, 'The power of asking why and setting strategically courageous aspirations to meet the challenges of today and the future' will include an overview of:

- the joint project with Viva,
- the energy hub, and oxygen for wastewater production,
- low saline recycled water for industry,
- the Colac Renewable Organics Network and Black Rock in the circular economy,
- Integrated Water Management for Geelong's Northern and Western Growth areas
- First Nations partnership and self-determination.

In accordance with our rules of association, we also hereby call for nominations for the positions of:

President, Vice-President, Secretary, Treasurer.

You may also like to consider joining us as a general committee member.

Please email nominations and/or your intention to attend by Friday 29th November to [friendsofthebarwon@gmail.com](mailto:friendsofthebarwon@gmail.com)

For catering purposes, if you have any dietary requirements/ please email them through too. We hope to see you there.

## Statement from the Minister for Environment Victorian State Government

We want as many Victorians as possible to enjoy the great outdoors. Parks Victoria manages more than four million hectares of parks and reserves which attract more than 100 million visits every year. These assets must meet the needs of Victorians for generations to come.

It's clear that Parks Victoria's current operations need to be improved to meet community expectations. I have therefore ordered a comprehensive review of Parks Victoria, to advise how the organisation can better serve the needs of Victorians and help them enjoy the great outdoors.

The review will focus on Parks Victoria's priorities, the delivery of its objectives under the Parks Victoria Act 2018, the organisation's administration, finances, functions and delivery model – to identify ways the organisation reduce red-tape, improve customer service, and deliver better outcomes for Victorians. The review will be completed by March 2025, and will be overseen by the Victorian Government with the support of Korda Mentha.

As part of this process, Matthew Jackson, the CEO of Parks Victoria, has departed his position by mutual agreement and I wish him well.

Graeme "Gus" Dear has been appointed as Interim CEO of Parks Victoria. Gus brings with him 30 years of experience in public and private sector administration and has served on the Victorian Fisheries Authority (VFA) Board since its inception, most recently as Chair. Gus loves the bush. Ever since he caught his first

redfin at Ringwood Lake as a young boy, he's been "hooked on fishing." His passion for the great outdoors and experience in administration means he is the right person to help Parks Victoria change. His leadership will ensure Parks Victoria continues to provide accessible, enjoyable outdoor experiences while protecting and enhancing the state's natural environment.

## Funding boost for wildlife rescue volunteers

### Victorian State Government

The Government is boosting funding for Victoria's wildlife rescue volunteers who dedicate their time and expertise to care for sick, injured and orphaned wildlife.

Minister for Environment Steve Dimopoulos opened applications for Wildlife Rehabilitator Grants with up to \$3,000 in funding available as part of a \$300,000 investment to support wildlife rescue volunteers provide native animals in need of rehabilitation.

Wildlife shelter operators and foster carers can apply for funding to cover a range of expenses, including equipment, vet fees, training, feed and medication.

Wildlife shelter operators can apply for up to \$3,000. Foster carers can apply for up to \$2,000.

Applications open on Tuesday 25 November 2024 and close on Wednesday 5 February 2025.

For more information visit on Wildlife Rehabilitator Grants and to submit an application visit [wildlife.vic.gov.au/grants/wildlife-rehabilitator-grants/](https://wildlife.vic.gov.au/grants/wildlife-rehabilitator-grants/).



# ADF announces AGM and election results

## Australian Dairy Famers

Australian Dairy Farmers has held its Annual General Meeting with David Beca, Heath Cook, and Ben Bennett returned to the Board.

Ben Bennett was re-elected President for a period of two years unopposed at a National Council meeting immediately following the AGM.

ADF Chief Executive Officer Stephen Sheridan congratulated the three returning Directors. "David Beca returns once more as an Independent Director and Heath Cook and Ben Bennett as Business Directors," Mr Sheridan said.

"I thank Andrew Aldridge for contesting the Board vacancies at today's AGM, as well as for his time and commitment as a Policy Advisory Group chair and a National Councillor."

"On behalf of ADF, I look forward to a constructive year ahead with some significant priorities already on the cards, including a review of the Dairy Code of Conduct and a Federal Government election."

## About Australian Dairy Farmers

*Australian Dairy Farmers is the recognised national dairy farmer industry representative body working to improve the productivity and sustainability of dairy farming in Australia. Representing Australia's six dairying states, Australian Dairy Farmers state membership comprises representatives from Victoria, Tasmania, New South Wales, Queensland, South Australia and Western Australia. These state bodies are known as State Dairy Farmer Organisations (SDFO). Australian Dairy Farmers provides the SDFOs with support and representation on a national level.*

# SOUTH-WEST

## — PAINTING — GROUP

**Contact us:**

 0431 719 218

 [www.southwestpaintinggroup.com.au](http://www.southwestpaintinggroup.com.au)

 [matt@southwestpainting.com.au](mailto:matt@southwestpainting.com.au)

**We specialise in:**

- New Homes
- Texture Feature Finishes
- New and Old Cabinetry Coatings
- Commercial Projects
- Maintenance Work
- Residential Work
- Wallpapering
- Pre-Sale Painting

# Skilled workforce recession requires apprenticeships boost

## Victorian Chamber of Commerce and Industry

The Victorian Chamber of Commerce and Industry is concerned at the 38 per cent decline in apprenticeship commencements in a four-month period across 2024-25 compared to the same period in 2023-24.

The drop in new apprenticeships is most pronounced in carpentry and plumbing. Additionally, there is a drop in commercial cookery, retail, hospitality, hairdressing and engineering fabrication.

One of the key factors in the decline is the reduction to employer incentives. The Victorian Chamber is proposing a two-tiered incentive scheme that includes:

- For small businesses: Incentives of \$15,000 per apprentice, including an initial lump sum of 35% at commencement, 25% at the end, 25% at completion, with progress payments of five% annually in years two to four.
- For medium-sized businesses: Incentives of \$10,000-\$12,000 per apprentice.
- For large businesses: Targeted funding to support apprenticeships, reinforcing the critical role large employers play in mentoring and supporting apprentices.

The Victorian Chamber asserts that a structured and industry-centric apprenticeship system is essential to developing a sustainable and skilled workforce. Restoring and expanding incentives for businesses, especially small and medium enterprises, is the first step toward reversing the current trajectory and positioning Australia's workforce for future demands.



We'd love to see you!

# WINCHELSEA PLAYGROUP

Each Thursday during school terms.  
Come along between 10AM - 12PM.  
Check out our Facebook Page for more information about the happenings of each session.  
Playgroup Leader - Danni Menzies  
Email: [winchelseaplaygroup@gmail.com](mailto:winchelseaplaygroup@gmail.com)  
St. Thomas's Hall,  
27-29 Barwon Terrace,  
Winchelsea VIC 3241

**\$5 PER FAMILY**

**INCLUDES MORNING TEA & HOT DRINKS FOR CAREGIVERS**



Scan to be part of our Facebook Group



Over 55s  
Travel Trends:  
Maldives Hot,  
Cook Islands Not

Forward Travel

Aussie Boomers are rewriting travel rules, opting for adventure and cultural immersion over traditional holiday destinations.

According to a new report from Forward Travel, destinations like the Maldives, Bangladesh, Colombia, Congo and Scotland are capturing the imaginations of Australian travellers aged 55+, with some increasing in popularity as much as 257%.

At the same time, once-popular destinations like the Cook Islands, China, USA, Switzerland and Hong Kong are falling out of favour, with declines in interest of up to 97%.

10 Destinations Rising in Popularity  
Among Australians Over 55

Destination	Rise in popularity (%)
1. Maldives	257%
2. Bangladesh	165%
3. Colombia	145%
4. Congo	145%
5. Scotland	65%
6. Saudi Arabia	65%
7. Kuwait	58%
8. Kosovo	58%
9. Grenada	47%
10. Ethiopia	46%

Source: Australian Government Department of Home Affairs Overseas Arrivals and Departures (2018–19 and 2022–23)

10 Destinations Losing Popularity  
Among Australians Over 55

Destination	Decline in popularity (%)
1. Cook Islands	97%
2. China	95%
3. Switzerland	91%
4. Czechia	86%
5. Hong Kong	85%
6. Finland	85%
7. Tongo	84%
8. Myanmar	76%
9. Nauru	75%
10. Kenya	74%

Source: Australian Government Department of Home Affairs Overseas Arrivals and Departures (2018–19 and 2022–23)

16 Days of activism, changing the story about  
gender based violence

Surf Coast Shire

Surf Coast Shire Council supports the ‘16 Days of Activism against Gender-Based Violence campaign’, welcoming Dans Bain and her artwork ‘The Lost Petition’ to Torquay on Monday 2 December 2024.

‘16 Days of Activism against Gender-Based Violence’ is an international campaign to challenge violence against women and girls.

The campaign runs annually from 25 November (International Day for the Elimination of Violence Against Women) to 10 December (Human Rights Day).

‘The Lost Petition’ is an ongoing textile artwork listing the women and children who have lost their lives to male violence in Australia from 2008.

Measuring over 30 metres long, and growing, this simple artwork serves as a powerful reminder about gender based violence. The artwork aims to connect communities, spark discussion, and inspire positive action, as real change comes from community led action.

‘The Lost Petition’ will be unrolled on Polworth Oval, Torquay, and will be filmed. A video will be made about the artwork and will be shared on social media pages. “The Lost Petition sparks conversations

in the community and brings home the reminder that there is still a lot to be done to make sure all women and children are safe in their community,” said Mayor, Cr Mike Bodsworth.

“Let’s keep the conversations going and make sure we are shining a light on this topic at every opportunity. We need to make sure we create a future where people feel safe, equal and respected,” he said.

“Thank you to Dans Bain and the Torquay Community House for bringing this artwork to Torquay during the 16 Days of Activism period.”

If you or someone you know needs help, contact:

- 1800 Respect: 1800 737 732
- LGBTIQ+ Support Service: 1800 184 527
- Women’s Crisis Line: 1800 811 811
- Kids Helpline: 1800 551 800
- Men’s Referral Service: 1300 766 491
- Mensline: 1300 789 978
- Lifeline (24-hour Crisis Line): 131 114
- Aboriginal & Torres Strait Islander Crisis Support Line: 13 YARN



**DRIVEWAYS, CARPORTS, CROSSOVERS,  
FOOTPATHS, SHED SLABS, STAIRS  
HOUSE SLABS, EXPOSED, SEALING & MORE**

**CONTACT ALISTER NOW FOR A QUOTE**

 **0411871950**

 **AMACONCRETING1@GMAIL.COM**



**WINCH WEBSITES**  
WEB SOLUTIONS SIMPLIFIED.

# WEBSITES

**GROW business  
INCREASE reach  
SAVE time**



**Find out what a website  
could do for you**

**winchwebsites.com.au**

**04 887766 20**



Charles Stewart & Company are leading livestock and real estate service providers covering Victoria's south west

Office  
56 Bromfield Street, Colac  
www.charlesstewart.com.au

**LIVESTOCK**  
Jamie McConachy | 0418 522879  
Peter McConachy | 0408 522878  
Matt Nelson | 0428 315400  
Gerard Bohan | 0400 005541  
Lachie Barclay | 0438 346291  
John Thornton | 0408 526367  
Dougal McIntyre | 0439 575612  
Ross Spitty | 0419 539717

**REAL ESTATE**  
Michael Stewart | 0418 520467  
Daryl Osborne | 0419 388341  
Anthony McDonald | 0418 593597  
Gerard Bohan | 0400 005541  
Stephen Lugg | 0417 556098  
Josh Lamanna | 0417 586032



**Free financial counselling with the Rural Financial Counselling Service**

1300 771 741

AGRICULTURE VICTORIA



**Lifeline**

13 11 14

## Funeral Planning

*Working out what is best for you*

Prepaid Funerals, Funeral Bonds, Pay-by instalments...There are many options and it's important to make the right choice

Alyson Burchell will be available by appointment to answer any questions about funerals and planning ahead



For more information or to make an appointment contact Sue on 5221 4788

Tuckers Community Office,  
Surf Coast Taxation Services, 22 Willis Street,  
Winchelsea

**First Tuesday of the Month,  
By appointment 10.00am – 12.00pm**

**Tuckers**  
Funeral & Bereavement Service  
...for a life worth celebrating

Caring for families since 1883

5221 4788

www.tuckers.com.au

Winchelsea and District

## Ebony knows banking

If you need help with yours, you need to meet Ebony.

Ebony shares her knowledge of banking so you can achieve what you want from life.

And, she can meet you when and where it suits you; at the branch, over the phone, or via video call.

**If you need help with your banking, call Ebony Berg, Loan Specialist on 5267 3189 or search Bendigo Bank Winchelsea.**

bendigobank.com.au

**Bendigo Bank**

Bendigo and Adelaide Bank Limited ABN 11 068 049 178, AFSL/Australian Credit Licence 237879. A1415950 OUT\_33710515



## SIMPLE STORAGE SOLUTIONS

- Personal & Business Storage
- Boat, Caravan & Vehicle Storage
- High Security Premises
- Individually Alarmed Units
- Electric Gate Access
- 7 Day Access & CCTV

**YOUR STORAGE PROBLEMS SOLVED**

**5267 3116**

6 ALSOP DRIVE, WINCHELSEA 3241





f www.onebodychiropractic.com.au

03 52672240 Shop 4/21 Hesse St Winchelsea

Here for your Vitality. Care for the Whole Family

Chiropractic Care for:

Pain - Prevention - Performance  
Nervous System Care - Sleep - Wellbeing  
Women's Health - Paediatrics - Vitality  
Stress & Anxiety - Holistic Healing



**R.A.K. DAVIS**  
**& SONS**

**CARTAGE  
CONTRACTORS**

**WINCHELSEA**

SUPPLIER OF ALL QUARRY MATERIALS, TRUCK HIRE

CARTAGE OF GRAIN, LIME, GYPSUM & SUPER

LANDSCAPE & GARDEN SUPPLIES

56 WILLIS ST, WINCHELSEA

Ph – 5267 2094

Ryan – 0438 672 281

email: rakdavissons@gmail.com

Winchelsea  
**Community Market**



Located at 36 Main Street, Winchelsea 3241

For any enquires or bookings please contact the clinic on 5292 8028.  
Or visit our website: [www.winchmc.com.au](http://www.winchmc.com.au)

Opening Hours:

Monday - Friday 8:00am - 5:00pm

(Monday Evening Clinics available and selected Saturdays)



Our clinic accepts online bookings via the app called HotDoc.  
Download the app on the App Store or Google Play or head to our website.

**Wightons Lawyers**

Dispute Resolution & Litigation  
Debt Collection  
Property Law  
Wills & Estates  
Powers of Attorney  
Business Law  
Family Law  
By appointment only

22 Willis Street, Winchelsea  
ph. 5221 8777

[www.wightons.com.au](http://www.wightons.com.au)







## Climate Connect End of Year Celebration

Join us at our Climate Connect End of Year Celebration where you can meet our new CEO, Jane Spence, and farewell our outgoing CEO, Dan Cowdell, as we celebrate the close of an incredible year of climate action and community connection.

**5.30 - 7.00pm, Wednesday 11 December**  
**Industrie 26, 26 Pakington Street, Geelong West**

This evening is a chance to reflect on the significant strides our community has made in tackling the climate emergency, and our aspirations for 2025.

There will also be an interactive activity creating a space to exchange ideas and set meaningful resolutions for the year ahead.

## Climate Council's Summer Media Briefing

**Thursday 5 December 2024**  
**11 am - 11:45 am**

The Summer Media Briefing will have 30 minutes of presentations with time for questions afterwards.

This briefing will cover:

- The national summer weather outlook
- Emergency preparedness over summer
- How near record warm oceans could make it harder than ever to predict the seasons ahead

Speakers:

- Professor David Karoly, Professor Emeritus at University of Melbourne and former Leader of the Earth Systems and Climate Change Hub in the Australian Government's National Environmental Science Program, based in CSIRO
- Greg Mullins AO, AFSM, former Commissioner of Fire and Rescue New South Wales, former President Australasian Fire & Emergency Service Authorities' Council

To attend, simply join this Zoom Meeting: <https://us02web.zoom.us/j/83214499806?pwd=b3EwKK9YqtQwSWIZjtLMKVmskzPreS.1>

Meeting ID: 832 1449 9806 Passcode: 484768

For more information, questions or interviews please contact Jacqui Street 0498 188 528 / [jacqui.street@climatecouncil.org.au](mailto:jacqui.street@climatecouncil.org.au)

## Winchelsea Taxis is now Surfcoast Taxis

Our fleet of vehicles are growing to all late models and we are covering an extended area including Winchelsea, Colac, Bannockburn, Inverleigh, Great Ocean Road and Geelong.

We have a fleet of 10 seater Maxi Vans, all with capacity to carry wheelchairs.

**Surfcoast Taxis Pty Ltd**  
**All Bookings: 0408 325 992**  
**Fax: 5267 2699**  
**Email: [bannotaxis@gmail.com](mailto:bannotaxis@gmail.com)**  
(Admin or Stan 0429 672 888)  
66A Batson Street  
Winchelsea 3241



Accounts NDIS provider. TAC, DVA etc

NDIS provider number 4050001044  
NDIS provider number 4050001048



### HESSE RURAL HEALTH

Acute Care\*  
Urgent Care\*  
Residential Aged Care\*  
Community Nursing  
Dietetics  
Physiotherapy  
Occupational Therapy

Diabetes Education  
Social Support Groups  
Counselling  
Home Care  
Health Promotion  
\* services from Winchelsea only

[www.hesseruralhealth.com.au](http://www.hesseruralhealth.com.au)  
P: (03) 5267 1200 E: [reception@hesse.vic.gov.au](mailto:reception@hesse.vic.gov.au)

# Meet Your Local Businesses

We love to showcase the local businesses of the Winchelsea region.

Know a business that could be next? Head to

[winchelseastar.org.au/contribute/promote-a-local](http://winchelseastar.org.au/contribute/promote-a-local) and fill in the quick questionnaire.

## Sunnygym

Evan Dowling  
0401417387  
[sunnygym.com.au](http://sunnygym.com.au)

I started my business a couple of years ago after I moved to Winch with my partner and our children. I grew up in Tassie so being close to nature is important to me as well as all the benefits that come with a small town community.

I'm passionate about helping people move their bodies in ways that work for them. It's not about weight loss or fitness necessarily, it's about the joy of moving!

I started very small, one client at a time in my shed! I'm still a small-scale, local business because I believe in small businesses that know and serve their local community.

Starting a small business with young children has been hard as I can't offer all



the services I'd like to all at once so I've had to learn to be patient and just do what I can.

I work with people from all walks of life but I've spent a lot of my career working with young people. Whether it's teaching little kids Kung Fu or teenagers boxing, I continue to find it to be engaging and rewarding work. This is why I'm so happy to be able to offer my services to people, young and old, in the Winchelsea community!

**SUNNY GYM**  
GYM BUT JOYFUL  
Strength, Mindfulness and  
Martial Arts in Winchelsea

**Kids Kung Fu  
Group Exercise  
Personal Training  
Qi Gong**

[sunnygym.com.au](http://sunnygym.com.au)

## Active Allsorts Disability Care

Jack O'Brien  
Active Allsorts Disability Care  
[activeallsorts@outlook.com.au](mailto:activeallsorts@outlook.com.au)  
0477221516  
<https://activeallsorts.com.au>

My Wife and I bought and moved to Winchelsea a little over three years ago. We wanted to live down by the coast and spent a fair amount of time searching in and around Geelong and the Surf coast before settling on Winchelsea. What drew us to Winchelsea was the chance to be apart of a small community that we felt our family could grow with. (We have two daughters 2 & 6 months)

Prior to moving to Winchelsea I had been working in disability care for a company based in Shepparton for 7 years I worked across a number of sectors and had

**Hi! I'm Jack, Director of Active Allsorts**

**What we facilitate**

- Social supports
- In home supports
- Community based leisure and recreation
- Programs and activities tailored to clients wants and needs
- Trips and excursions
- Short term accommodation

At Active Allsorts we want to give our participants the chance to live their best life. We understand that there is no 'one size fits all' approach when it comes to the journey of life. We are here to help people reach their peak, whatever that might look like to them. Our aim is to provide our participants with a range of supports that will help them learn, grow and achieve.

**For enquiries, call me today!**  
0477 221 516

[0477 221 516](tel:0477221516) [activeallsorts@outlook.com](mailto:activeallsorts@outlook.com) [activeallsorts.com.au](https://activeallsorts.com.au)

always imagined one day running my own business and that's how Active Allsorts Disability Care came about.

We have now been operating for 3 years in and around the Geelong, Ballarine and Surf coast region.

What we provide:

- Social supports
- In home supports
- Community based leisure and recreation
- Programs and activities tailored to clients wants and needs
- Trips and excursions
- Short term accommodation

If your or anyone you know is looking for support please don't hesitate to contact us!





45 Hesse Street, Winchelsea, VIC (03) 5267 2241 [winchelsea.bowls.com.au](http://winchelsea.bowls.com.au)



# Winchelsea Bowls Club

**Julie Johnson**

We have had some terrific weather this season and it has made getting on the green much more enjoyable. However, it turned very wet at the weekend and all games across the region were washed out.

## MID WEEK PENNANT RESULTS

Rd 6

Division 1 def Simpson away winning 2/3 rinks, 86/58 shots.

Division 3 def Colac Central away winning 2/3 rinks, 59/53 shots.

Rd 7

Division 1 drew with Colac at home winning 1/3 rinks 71 shots all.

Division 3 were def at home by Colac City winning 1/3 rinks 64/65 shots.

## WEEK END PENNANT RESULTS

Rd 7

Division 1 def Colac City at home winning 3/4 rinks, 116/72 shots.

Division 2 def Camperdown Golf away winning all rinks 103/83 shots

Division 4 Unfortunately due to many reasons we were unable to field a team.

Rd 8 All Divisions were washed out.

## LADDER POSITIONS

Division 1 First

Division 2 Third

Division 4 Seventh

## AROUND THE GREEN

Several players are participating in the Region Trials and hopefully we will once again have some representatives when the teams are selected.

Coming up this month are the Ladies and Men's Championship Singles and our Christmas Function on the 14th, names on board please. Leading up to our final games before the Christmas break, may the bowls be with you!!

## Please slow down around road workers

Most of us understand that abusing road workers is unacceptable, but they often face verbal and physical aggression from speeding, distracted or impatient drivers.

Reduced speed limits around road worksites have been designed to keep drivers and road workers safe. Following these limits is also the law and penalties apply.



Learn more at  
[transport.vic.gov.au/respect](http://transport.vic.gov.au/respect)



Authorised by the Victorian Government, 1 Treasury Place, Melbourne





- ❑ LOG BOOK SERVICE
- ❑ AUTO ELECTRICAL
- ❑ TOWING
- ❑ AIR CONDITIONING
- ❑ CLUTCH & BRAKES
- ❑ TYRES
- ❑ WHEEL ALIGNMENT
- ❑ BATTERIES

17 Alsop Drive

## CAR, TRUCK REPAIRS & Roadworthys

**PH: 5267 3001**

**Mob: 0417 137 457**



Scott McDonald  
0423 413 829

**S.J.R AUTOMOTIVE**

ABN 842 483 848 39  
13 ALSOP DRIVE, WINCHELSEA VIC 3241



Call Matt - 0418 319 357  
[mbwoodplumbing.au](http://mbwoodplumbing.au)

### Servicing Winchelsea & surrounds

- General maintenance & blocked drains
- Gas fitting & hot water service upgrades
- New homes & renovations

### NO MATTER WHAT YOUR PROBLEM, DODDS ELECTRIX CAN DEFUSE THE SITUATION.

RURAL, INDUSTRIAL, COMMERCIAL DOMESTIC  
PHONE 0438 887 360  
EMAIL: DODDSY@FASTMAIL.FM  
PO BOX 36 BIRREGURRA, VICTORIA 324  
REC: 17520 ABN: 64 581 250 880



New Homes, Renovations, Extensions,  
Bathrooms, Decks & Pergolas

📞 0408 583 362

✉ [stephen@alfordbuilt.com.au](mailto:stephen@alfordbuilt.com.au)



**REGISTERED**  
Building Practitioner

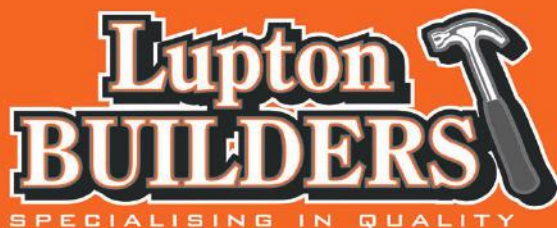
## NATURAL GAS CONNECTIONS

### M. & L DRAYTON PLUMBING SERVICES

#### YOUR LOCAL LICENSED

- PLUMBERS (24356)
- GAS FITTERS
- GAS CONVERTERS
- CARBON MONOXIDE TESTING

**MARK 0428 520 142**



**REGISTERED**  
Building Practitioner

- |               |                       |               |
|---------------|-----------------------|---------------|
| • NEW HOMES   | • EXTENSIONS          | • RENOVATIONS |
| • ALTERATIONS | • DECKS               | • PERGOLAS    |
| • CARPORTS    | • VERANDAS            | • RE-GLADS    |
| • BATHROOMS   | • WINDOW REPLACEMENTS |               |

LEIGH LUPTON  
0438 840 104

CHRIS LUPTON  
0407 681 514

[LEIGHLUPTON17@GMAIL.COM](mailto:LEIGHLUPTON17@GMAIL.COM)

Est. 1977

## GREAT Bundle Deal on Bosch Hot Water... FROM ELGAS

Buy any Bosch Bluetooth continuous flow hot water model - 16Litre, 20Litre or 26Litre and  
**Receive \$100\* in Elgas bonus LPG gas credits**

\*For more details: [www.elgas.com.au/appliances/boschcptflow-16-20-26-lpg-bundle-sale](http://www.elgas.com.au/appliances/boschcptflow-16-20-26-lpg-bundle-sale)

**AND... for new customers, an additional \$80 WORTH OF LPG GAS CREDITS\*\***  
when you open a new LPG Gas account with Elgas

\*\*Further details can be viewed at [www.elgas.com.au](http://www.elgas.com.au)

Ask about the Elgas Easy Payment Plan - 12 months interest free\*\*\* on selected LPG appliances  
\*\*\*Further details can be viewed at: [www.elgas.com.au/epp](http://www.elgas.com.au/epp)

Automatic tanker gas bottle refill OR gas bottle exchange  
refill is available for home or business....  
Call today or visit our website for our many customer benefits and latest offers.

**131 161**  
[www.elgas.com.au](http://www.elgas.com.au)

**ELGAS**



©2019 ELGAS LTD.





- Domestic and Commercial hire equipment • Industrial welding gas
- Digging and Earthmoving equipment • New trailers and trailer repairs
- Firewood • Stockists of Royal Oil Lubricants products
- LPG for domestic and commercial requirements

Give Chris and the Team a call on **5232 1177** or email [info@colachire.com.au](mailto:info@colachire.com.au)

[www.colachire.com.au](http://www.colachire.com.au)

101 Wallace St Colac 3250



A family business operating for more than 138 years, HF Richardson services an extensive client base throughout the greater Winchelsea area. Our success is built on a long history of innovation and while we've moved with the times, our basic values of honesty, trust and integrity have remained.



**Eric Foster**  
**0429 499 924**  
Sales Executive



**Residential | Rural Lifestyle  
Agricultural Farms**

**HF RICHARDSON**

**Ken McDonald**  
**0418 524 150**  
Licensed Estate Agent

**PROPERTY**

[www.hfrichardson.com.au](http://www.hfrichardson.com.au)

# Winchelsea Golf Club

**45 Anderson Street,  
Winchelsea**



Come along and have a great round of golf with a fantastic group of people, we pride ourselves on being welcoming and enjoying all aspects of golf, both the game and social.



**Moriac Veterinary Clinic**  
**0447 781 089**  
**PHONE 24 HOURS**  
784 Hendy Main Road Moriac  
[info@moriacvet.com](mailto:info@moriacvet.com)  
[www.moriacvetclinic.com.au](http://www.moriacvetclinic.com.au)  
**HOURS // Monday - Friday: 8am - 5pm**



**Casuarina Counselling Therapy**  
*Time For You*  
Counselling to help find clarity, understanding and new ways forward for relief from distress of all kinds, including anxiety, depression, addiction, relationship issues.  
**Call 0493 988 150 to book appointment**  
Available at The Exchange,  
32-34 Main Rd, Winchelsea

[eldersrealestate.com.au](http://eldersrealestate.com.au)



## You're in Safe Hands With Peter Lindeman Delivering Exceptional Results for Over 20 Years

If you're thinking of selling a Rural or Lifestyle acreage property on the Bellarine, the Greater Geelong region or beyond then think Peter Lindeman. Peter spent 20 years managing farms before jumping the fence to sell them; and over the last 23 years he's helped over 350 vendors achieve extraordinary results, more often than not surpassing their expectations. Why not let Peter show you how he can help you achieve an outstanding result for your property.

**Peter Lindeman - 0418 525 609**  
**RURAL AND LIFESTYLE SALES MANAGER - ELDERS GEELONG**

**E: [peter.lindeman@elders.com.au](mailto:peter.lindeman@elders.com.au)**



# MET BUILDING & CONSTRUCTION

NEW HOMES | EXTENSIONS | RENOVATIONS

Ph: 0409 433 687



Water Supply Specialists

WATER SOLUTIONS

74 Dennis Street, Colac  
5231 1861



ALL THINGS WATER:

- PUMPS • PIPES
- FITTINGS • TANKS
- POOL CHEMICALS
- IRRIGATION
- WATER PURIFICATION
- SOLAR • REPAIR

Green Lead Electrical  
Connecting you to a greener future  
REC 23618

0467 097 101



**Servicing Geelong & the Surf Coast**

**Specialising in all residential electrical work including:**

- Switch board & lighting upgrades
- Outdoor lighting
- Electrical safety checks
- Energy efficient LED lighting
- Ceiling sweep fans & ventilation
- Energy saving advice

Phone Martin Wilkinson:

**0467 097 101**

[greenlead@outlook.com](mailto:greenlead@outlook.com)

1132288-CG18-14

**SIMCO**  
**PLUMBING SERVICE**

Domestic - Commercial - Rural

**0400 643 976**

- All general Plumbing and Gasfitting • Water tanks and Pumps
- Renovations and Extensions • Hot water and Heat pump
- Split system and Wood heaters • Roof and Gutter
- Septic and Treatment plants • Excavation, Bobcat and Tipper
- Driveways and Earthworks
- Blocked drains and CCTV Inspection

Simon McGillivray

Lic: 109610 Free Quotes, Fast & Friendly Service



**Triple Cee**  
**Country**  
**Maintenance**

Local  
Family  
Owned  
& Operated

Handyman

Lawn  
Mowing

Concreting

Pressure  
Washing

Acreage  
Garden  
Care

Slashing

Working  
with  
Children's  
Check

ABN - Can  
bill NDIS &  
Age Care

**0434 008 123**

Commercial | Industrial | Domestic

**HAMILTONS**

**Truck & Bobcat Hire**

**Give Aaron a Call**

**0438 438 623**

## TREE WORKS & STUMP GRINDING



Fully insured and qualified  
climbing arborists.

Slashing and fire preparation.

FREE QUOTES

**0488 553 650**

Mathieu Vaupres

[www.colactrees.com.au](http://www.colactrees.com.au)





30 November 2024

Trebeck Reserve, Winchelsea



Liz Bennett completing her PB in 50 minutes and two seconds



Eva Phan completing personal best time in 30 minutes and 36 seconds



Angela Hurren completing her personal best in 32 minutes 59 seconds

With the passing of Murray Aisbett during the week, Trebeck Reserve parkrun has lost a great supporter and volunteer. Until a few weeks ago Murray had volunteered most weeks since our launch and filled most roles. His sense of humor and ability to 'Razz people up (his words)' will be greatly missed. Rest in peace Murray.

34 participants completed the course through Trebeck Reserve in humid, misty conditions this week. We had visitors from Balyang Sanctuary and a family from Canberra who are doing a trip around Australia, visiting parkruns as they go.

Seven people recorded their personal best time for Trebeck Reserve. Congratulations to Angela Hurren, Liz Bennett, Caroline Wojtowicz, Brooke Robins, Eva Phan, Jett Butler and Jane Boreham. Well done everyone who walked, ran or volunteered.

This event was made possible by the following volunteers: Don Smith \* Kate McInnes \* Marlene Gladman, Daryl Gladman and John Caufield \* David Woodall \* Helen Woodall. Special thanks to John, Marlene and Daryl who were visiting from Balyang Sanctuary

and helped out as Tail Walkers and with Visitors Welcome

Further details of this week's results can be found at [trebeckreserveparkrun.com.au/results](https://trebeckreserveparkrun.com.au/results) Please check out our Facebook page for today's photos and further information.

It takes a minimum of six people each week to safely conduct an enjoyable event. Please email [trebeckreserve@parkrun.com](mailto:trebeckreserve@parkrun.com) if you are able to volunteer some of your time. Tasks are simple, sociable, fun and very much appreciated.

If you wish to join us any Saturday morning as a walker, runner or volunteer please complete the simple online registration at [parkrun.com.au/register](https://parkrun.com.au/register). This is free, only needs to be done once and can be used at any of the 5,000 plus parkrun events worldwide. (awaits harnesses please)

You do not need to be a runner, wear fancy Lycra or the latest high-tech shoes. Around one third of participants walk the course. parkrun was conducted at around 500 locations across Australia this week.

## Stay scam-safe this festive season

### Victorian State Government

Be aware of online scams in the lead up to the festive season. Boxing Day, New Year, Black Friday and Cyber Monday are massive retail events in Australia, with an estimated \$30 billion spent over the summer of 2023–2024 – and online scammers and cyber criminals can take advantage of more people shopping online.

Scamwatch reports that Australians lost \$7.1 million to online shopping scams in 2023, with \$1.65 million from within Victoria.

A common scam to look out for is notifications about parcel deliveries. Consumers may receive texts, emails or notifications asking them to click on a link, but should always try to validate these requests by going through the courier's official website or app.

While anyone can fall victim to a scam, there are some ways Victorians can protect themselves. Spot a scam by looking out for red flags including:

- a product or service that sounds 'too good to be true'
- a sense of urgency or pressure to act quickly
- an unusual web address or web address that's different to the usual webpage for a seller
- an unusual or specific method of payment, for example, cryptocurrency or gift card payment.

It always pays to be extra cautious by checking the business' website, social media accounts or contacting the business independently to check whether a call or message is genuine.

Service Victoria has launched a new Spot a Scam quiz to help Victorians improve their knowledge of scams. The quiz tests if consumers know how to recognise a scam, and then provides tailored practical advice and information.

Victorians can test their scam knowledge now on the Service Victoria app and website at [service.vic.gov.au/spotascam](https://service.vic.gov.au/spotascam).

Scams can be reported to Consumer Affairs Victoria at [consumer.vic.gov.au/contact-us](https://consumer.vic.gov.au/contact-us).

# Bek's Hiring Boutique



For Appointments to  
come and browse the  
collection -  
please call bek on  
0466600524

Located at 55 Harding  
Street Winchelsea Vic

## Winchelsea Star

ISSN 2202-6851



9 772202 685002

Since 1977

### DEFIBRILLATORS IN

#### WINCHELSEA

Accessible to the public  
24 hours a day

The Winchelsea Lions Club has compiled a list of public access defibrillators in Winchelsea. If anyone knows any others with 24 hour public access, please let Linda Carter know 0439 817 263.

#### Ambulance Victoria

33 Willis Street

#### Bendigo Bank

11 Main Street

#### Side Entrance, Globe Theatre

17 Willis Street

#### Hesse Rural Health

8 Gosney Street

#### Men's Shed

51 Hesse Street

#### Netball Courts

Eastern Reserve Hopkins St

#### Senior Citizens Club

36 Harding Street

#### Uniting Church

33 Hesse Street

#### Winchelsea Bowls Club

Hesse St,

#### Winchelsea Golf Club

13 Anderson Street

#### Winchelsea Primary School,

Main Street

#### Wurdale Memorial Hall

220 Wurdale Road

## HESSE RURAL HEALTH

### Volunteers Required

Volunteers are one of Hesse's greatest assets, playing a vital role to enhance the quality of Hesse services & client experiences.

Bus Driver

Outings Assistant

Resident Visitor

Events & Activities Assistant

Group Wheelchair Walkers

Appointment Escort

Social Support Activities

Gardening - Winchelsea

Hospital Auxiliary Member

Consumer Advisory Committee

Marketing & Fundraising Committee



For more information please contact Hesse on  
(03) 5267 1200 or via email [reception@hesse.vic.gov.au](mailto:reception@hesse.vic.gov.au)

