



AVANTE
BUREAU SHIPPING







A PURPOSEFUL VISION TO BECOME
THE LEADING FORCE SHAPING THE
MARITIME FUTURE





We base our export and logistics operations on internationally recognized quality standards, providing expert guidance to ensure smooth and efficient processes.





ABOUT US:

We are a maritime services company dedicated to delivering tailored solutions that meet our clients' needs. Our highly skilled team operates 24/7, assessing and mitigating risks to ensure the seamless delivery of our full range of services.

MISSION



To offer high-quality, comprehensive solutions for the maritime and environmental industries, ranging from consulting and research to operational and logistics management for vessels and port facilities. This is delivered by competent and certified personnel, ensuring full compliance with national and international regulations.

VISION



To be a leading provider of integrated maritime solutions, recognized nationally and internationally for our service excellence, innovation, environmental responsibility, and operational reliability, exceeding all client expectations.





OUR VALUES



Efficiency:

We maximize value and profitability while minimizing efforts and costs, achieving optimal productivity for our clients.

Discipline:

We carry out our work in a coordinated, orderly, and systematic manner, applying collective methods to achieve success, efficiency and consistency.

Trust:

We honor our promises as one of our fundamental commitments. This has been key to achieving sustainable and reliable processes. We understand our clients' needs, we speak their language, and we help them move forward.

Commitment:

Our staff works in full alignment with the company's objectives and values, which is reflected in our performance and quality standards, guaranteeing the professional development of our people.



Innovation: We constantly incorporate new ideas, methods, services, and products within our company to improve operations.

Integrity:

In all our operations, we ensure strict compliance with regulations and commitments, thereby promoting transparency and fostering strong, trust-based relationships.

Teamwork:

Success is built when each member contributes their unique skills and knowledge, creating synergies that strengthen our services. At Avante, teamwork not only optimizes processes but also fosters a culture of respect and collaboration, ensuring efficient solutions and quality results for our clients.



Our Ethos:

This represents the intangible force that drives every action and decision within our operations. It inspires us to work with passion, combining human expertise, technical knowledge, and nautical insight, ensuring that every task extends beyond daily operations and becomes an act of excellence.



OUR FLEET

Our fleet operations reflects a solid, reliable, and constantly growing maritime operation. We have units strategically positioned to meet the diverse needs of the maritime and port sector, including the tugboat Lady Debbie. She is designated for assistance, maneuvering, and support operations for deep-draft vessels, ensuring safety and efficiency in every port movement. In turn, our service launches are equipped for personnel transport, supply delivery, and logistical support, ensuring on-time performance and strict compliance with operational and regulatory standards.

The Avante fleet is strengthened by the M/V Angel Falls, a bulk carrier designed to transport large volumes of solid bulk cargo, which optimizes large-scale logistics operations.



TUG LADY DEBBIE



MV ANGEL FALLS

NAVIERA I



NAVIERA II



NAVIERA III



NAVIERA IV





OCCUPATIONAL SAFETY AND HEALTH

The safety and well-being of every crew member are our top priority. We guarantee safe and healthy working conditions in full compliance with all maritime safety regulations.

We implement robust protocols for the prevention, control, and response to occupational hazards, promoting an onboard safety culture that protects the physical and mental well-being of every crew member.

From occupational medical examinations to the supervision of operational conditions in port and at sea, we ensure that every vessel meets the highest standards of health and safety.





OUR SERVICES



SHIP AGENCY



FULL SHIP
MANAGEMENT



CREW
MANAGEMENT
(MANNING)



TECHNICAL
MANAGEMENT



OPERATIONAL
MANAGEMENT



CARGO
CONSOLIDATION



STEVEDORING



SHIP SUPPLY AND
PROVISIONING



CARGO
SEGREGATION



FERROUS
MATERIALS
INSPECTION AND
CERTIFICATION



LOGISTICS,
INSPECTION AND
CERTIFICATION



VESSEL
REPRESENTATION



ATMOSPHERIC
EMISSIONS
MONITORING



MARINE
EQUIPMENT AND
SYSTEMS TYPE
APPROVAL



BALLAST WATER
MONITORING



OCCUPATIONAL
MEDICINE



SHIPBOARD GARBAGE
COLLECTION



DRAFT SURVEY



SHIP AGENCY

We provide an expert team to handle all types of vessels, including container ships, Ro-Ro vessels, tankers, cruise ships, multi-purpose vessels (MVPs), and bulk carriers.





FULL SHIP MANAGEMENT

We provide comprehensive and reliable management of our clients' maritime assets, ensuring their sustainability, reliability, and efficiency. This service covers critical areas ranging from daily operational management, berthing coordination, and permit and customs processing to full documentary and logistical support for the Master and crew.



CREW MANAGEMENT (MANNING)



This service is focused on the management, selection, and administration of crews in accordance with international standards. We guarantee that each vessel is staffed with competent, certified personnel in full compliance with the regulations of the International Maritime Organization (IMO) and the International Convention on Standards of Training, Certification and Watchkeeping for Seafarers (STCW).

Our manning process covers all operational phases: selection and recruitment, technical interviews, occupational medical evaluations, transport, and logistical and accommodation services. Furthermore, we maintain continuous monitoring of crew well-being, promptly addressing their needs and providing emergency medical assistance when necessary.





TECHNICAL SUPPORT

This service focuses on ensuring the continuous operation and availability of vessels through proactive, planned, and rigorous maintenance management. It spans from detailed planning and scheduling of maintenance tasks needed to keep the fleet in optimal condition, to the execution of specific contracts involving thorough comprehensive technical verification of requirements. The process includes not only technical equipment inspections but also in-depth root cause analysis (RCA) of any failures, ensuring that the origin of the problem is addressed, not just its symptoms—a fundamental component of long-term success.

The primary advantage of this service is the ability to maintain peak performance and drastically reduce the incidence of sudden failures. This is achieved through effective maintenance management and scheduling, which reduces turnaround time and ensures tasks are performed under optimal conditions, all within a continuous improvement framework.





OPERATIONAL MANAGEMENT

This service centers on the day-to-day management of a vessel to ensure its efficient and safe operation. It involves handling all logistical, administrative, and regulatory compliance aspects necessary for the ship to navigate and operate smoothly. Avante handles voyage planning, fuel bunkering, coordination of crew supplies and provisions, and all travel and customs documentation required in each port. Our main objective is to ensure maximum vessel availability and the optimization of operating costs, always maintaining strict adherence to international and local maritime regulations.





CARGO CONSOLIDATION SERVICES

We provide a complete service package focused on meeting our clients' needs in terms of quality and timeliness, specializing in providing tailored Solutions.

STEVEDORING:

We offer responsive, effective, and safe stevedoring and discharging services, adapting to client needs in warehouses, depots, points of sale, and distribution centers. We have the best skilled workforce and the right equipment, duly certified, guaranteeing safety and efficiency in cargo handling.



Ro-Ro (Roll-on/Roll-off)



Containerized Cargo



General Cargo



Solid Bulk



Liquid Bulk



Special AND Project Cargo



SHIP SUPPLY AND PROVISIONING

Our staff is exceptionally well-coordinated at all levels of the supply chain, allowing us to deliver a wide variety of supplies in different conditions (dry, frozen, or refrigerated). Additionally, we can transport any type of technical tools, industrial machinery, or navigation gear the client requires to the vessel. For vessels in port, we provide the products needed to ensure continuity in the supply chain, saving both time and money.







CARGO HANDLING AND SEGREGATION

The objective of this service is the separation and segregation of products to minimize the risks of fire or contamination that can occur in mixed-storage areas.

The basic rule in handling dangerous goods (DG) is not to mix packages or containers with different hazard types, as per the UN Classification of Dangerous Goods.

Additionally, the following must be considered:

- The weight and volume of the containers will determine the shelving material and the positioning of the items.
- Materials that could explode in a fire (e.g., gas cylinders or aerosols) must be kept separate from other flammable materials.
- There must be an inventory of all reagents and a Safety Data Sheet (SDS) for each.
- Containers must be labeled, properly sealed with suitable caps, and in good condition.
- Highly flammable liquids and gas cylinders must be stored or installed in external areas.
- Proper environmental conditions must be maintained — ventilation, temperature, and humidity.



At **Avante Bureau Shipping**, we ensure the correct segregation of materials to reduce risk areas, as well as full compliance with requirements for containment bunds and the installation of protected (explosion-proof) electrical equipment.



+560
VESSELS ATTENDED



FERROUS MATERIALS INSPECTION AND CERTIFICATION

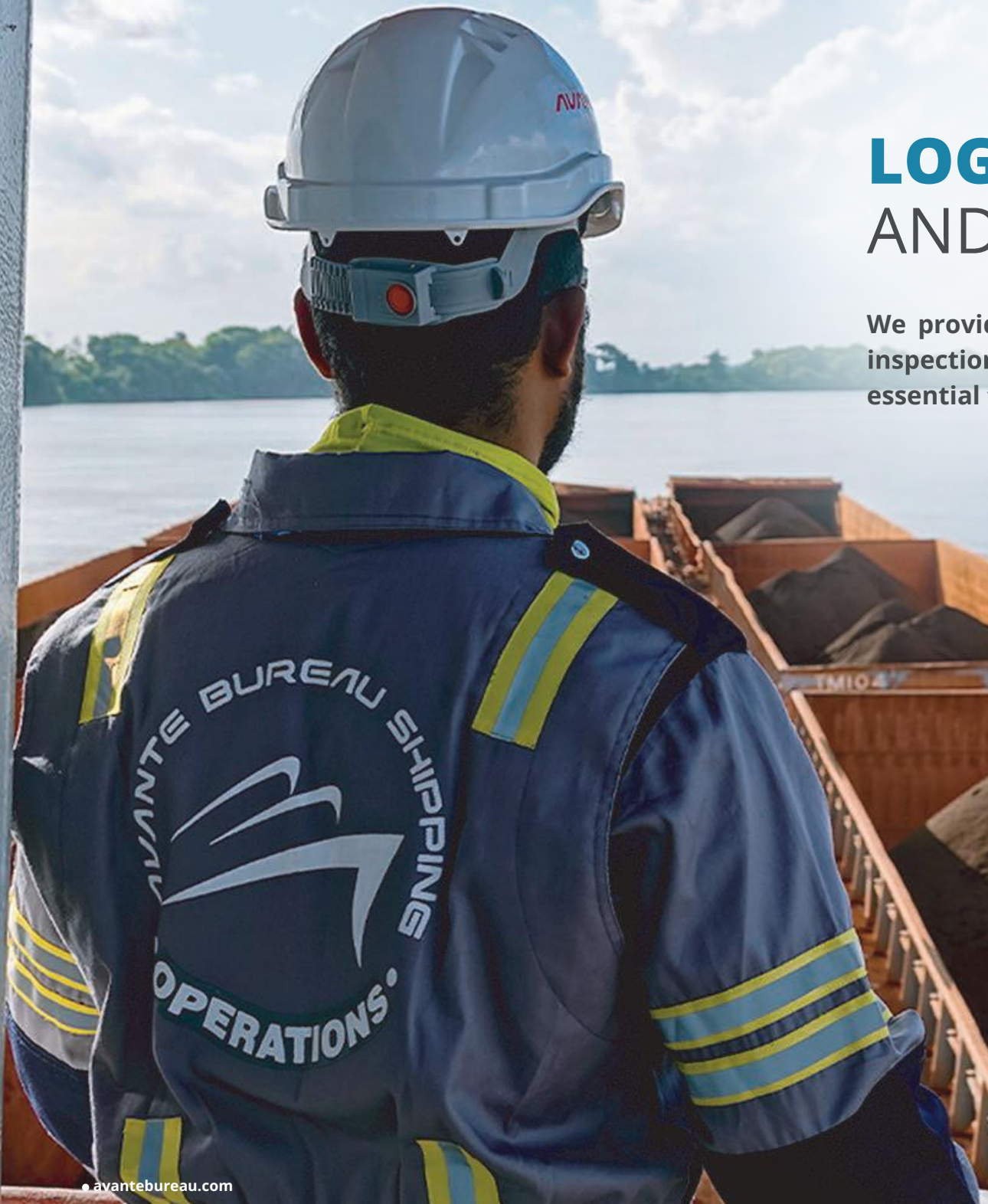
As a logistics service provider, we understand the importance of the inspection process and how this procedure offers clear insight into operations by giving a detailed account of the product and transport conditions. We have a trained and certified team for the inspection and certification of ferrous materials. We also handle its preparation and transport for export. Furthermore, we offer support in processes involving various types of industrial gases.

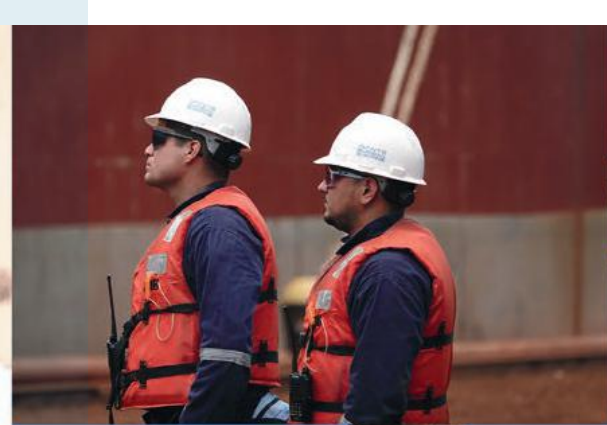




LOGISTICS, INSPECTION AND CERTIFICATION

We provide expert guidance through the logistics, inspection, and certification process, which is essential to raw material export operations.









SHIP REPRESENTATION SERVICES

At Avante Bureau Shipping, we handle the official representation of vessels (Container Ships, Car Carriers, Bulk Carriers, etc.) before local and port authorities. We handle all documentary formalities required by the ship's Master.

- We coordinate vessel berthing in port, receive our clients' cargo, and oversee its delivery to the final destination.
- We represent our maritime clients in managing all documentation and permits for vessel arrival and departure at all Venezuelan port customs offices.
- We provide advice and assistance on any legal matters required by the crew or the Master.





ATMOSPHERIC EMISSIONS MONITORING

This service involves the monitoring and verification of potentially polluting activities, ensuring the proper functioning of prevention systems, and the tracking and recording of emitted pollutants. We also verify compliance with emission limit values, established conditions, and all applicable regulations regarding atmospheric pollution.





MARINE EQUIPMENT AND SYSTEMS TYPE APPROVAL

This service entails a formal declaration confirming that equipment has passed a series of checks, tests, and trials established by applicable national or international regulations. Its purpose is to verify compliance with all prescribed specifications and performance standards.



BALLAST WATER MONITORING

The main threats to marine environments in Venezuela are habitat degradation and loss due to industrial pollution, infrastructure development, and the accidental or intentional introduction of non-native species. Ballast water analysis and management prevent certain types of pollution and the ingress of invasive species.

At **Avante Bureau Shipping**, we utilize the cutting-edge technology and automation for water quality analysis. We are continuously developing and implementing new methods, improving detection ranges and quantification limits set by evolving national and international standards, recognizing the critical importance of water quality worldwide.

Therefore, we have a highly qualified and accredited staff for these types of analyses. Thanks to our modern technical equipment, we can detect even trace levels of contamination, providing highly detailed and accurate results.





OCCUPATIONAL MEDICINE

We safeguard the health of seafarers. Our Occupational Medicine service ensures crews are fit for duty, safe, and in full compliance with international maritime health standards.

We offer:

- Pre-employment (PEME) and post- deployment medical evaluations.
- 24/7 medical care and first aid (in-person or via telemedicine).
- Awareness sessions on the prevention of common illnesses and specific onboard health situations.
- Epidemiological controls.
- Onboard first-aid medical chest updates and inventory management.
- Support in work-related accident investigations.
- Follow-up and monitoring of ongoing crew health cases.



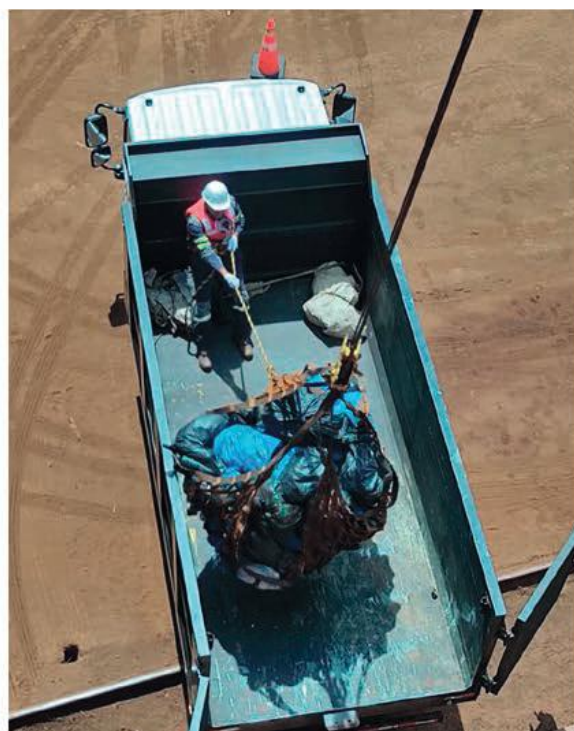
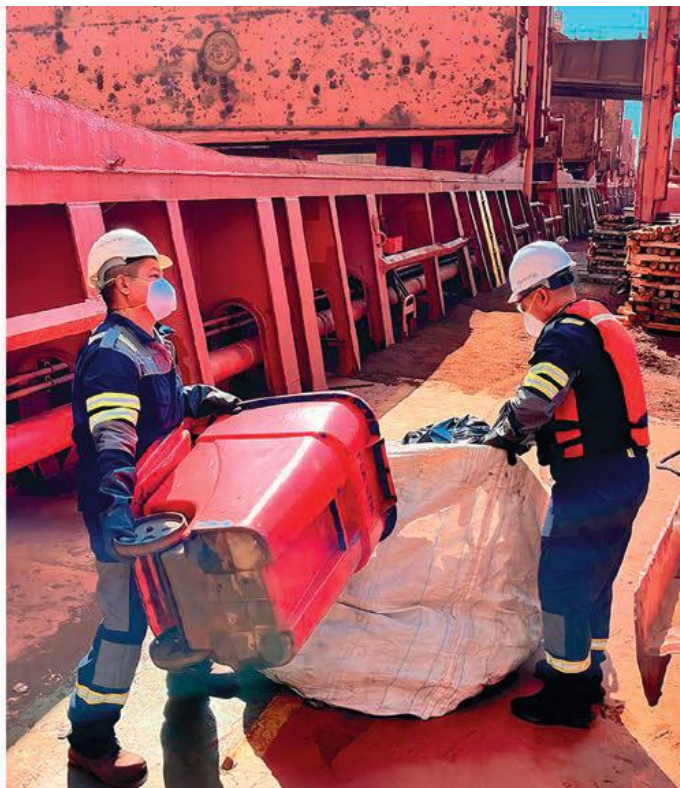




SHIPBOARD GARBAGE COLLECTION

This service is carried out in accordance with strict international standards at authorized port reception facilities and in full compliance with the MARPOL Convention – Annex V, which regulates the disposal of plastics, glass, paper, and organic waste generated onboard. With all necessary permits and authorizations, Avante Bureau Shipping guarantees fully compliant and traceable processes aligned with all respective environmental regulations.







DRAFT SURVEY

Avante Bureau Shipping, recognizing the critical importance of precision in cargo operations, offers professional Draft Survey services. We provide accurate and detailed calculations of cargo weight for each operation, which not only ensures fair and transparent transactions but also contributes to the safety of the vessel and the crew on board. With our expertise, vessel operators and clients can be confident that every kilogram of cargo is correctly accounted for, minimizing potential errors.



WE PROVIDE LEGAL AND REGULATORY SUPPORT

At Avante Bureau Shipping, all operations and services operate in strict adherence to current maritime regulations, ensuring legal certainty and confidence for our clients. This support, which benefits all stakeholders in the maritime trade, encompasses:



We also operate within the autonomous framework established by international conventions that shape national maritime legislation



PERFORMANCE AND STATISTICS

Since our inception, the extensive experience of our professionals has allowed us to achieve a clear and transparent understanding of the services we provide.

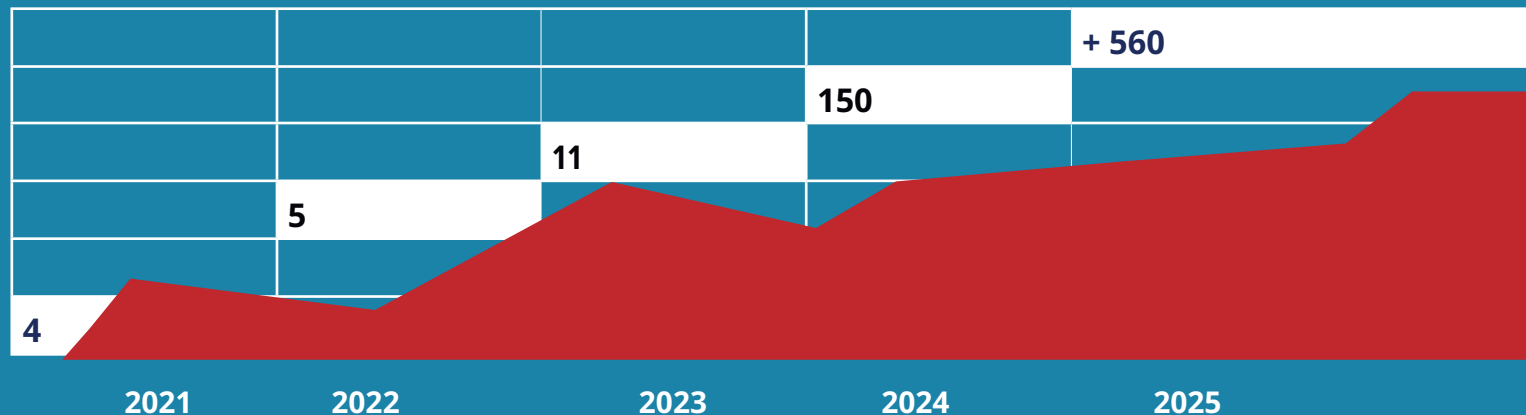
Based on a forward-looking approach and a strategy grounded in quality and efficiency, we have maintained a strong track record in the maritime sector, providing comprehensive solutions for our clients' operations.

As data is a fundamental tool for measuring success and driving constant improvement, we have based our results on a rigorous collection and analysis process.

Through graphs, tables, and statistics, we can demonstrate how our services consistently exceed expectations across the maritime industry, reflecting the hard work, dedication, and commitment of our talented team and the trust our clients have placed in us.

SHIP AGENCY

Number of vessels represented and attended annually

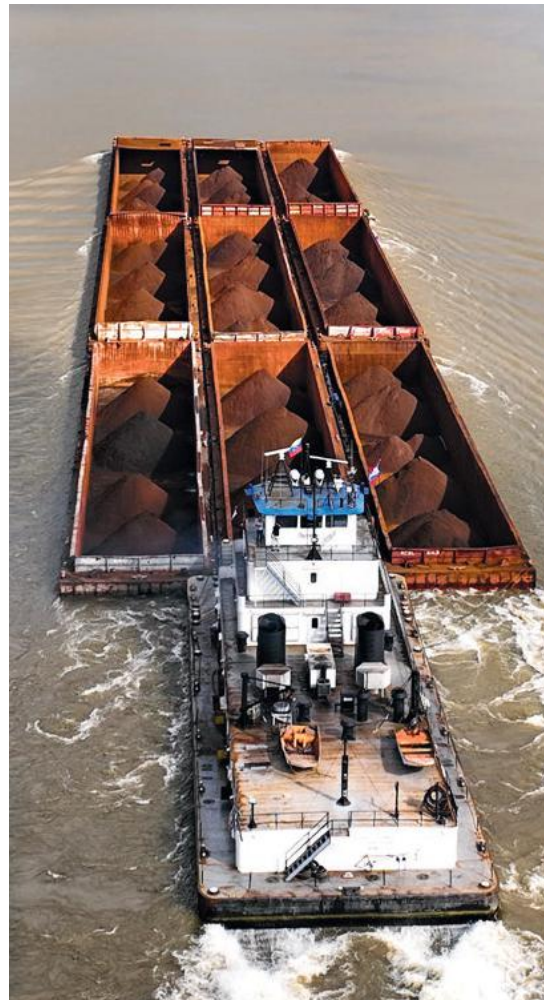


TYPES OF VESSELS REPRESENTED

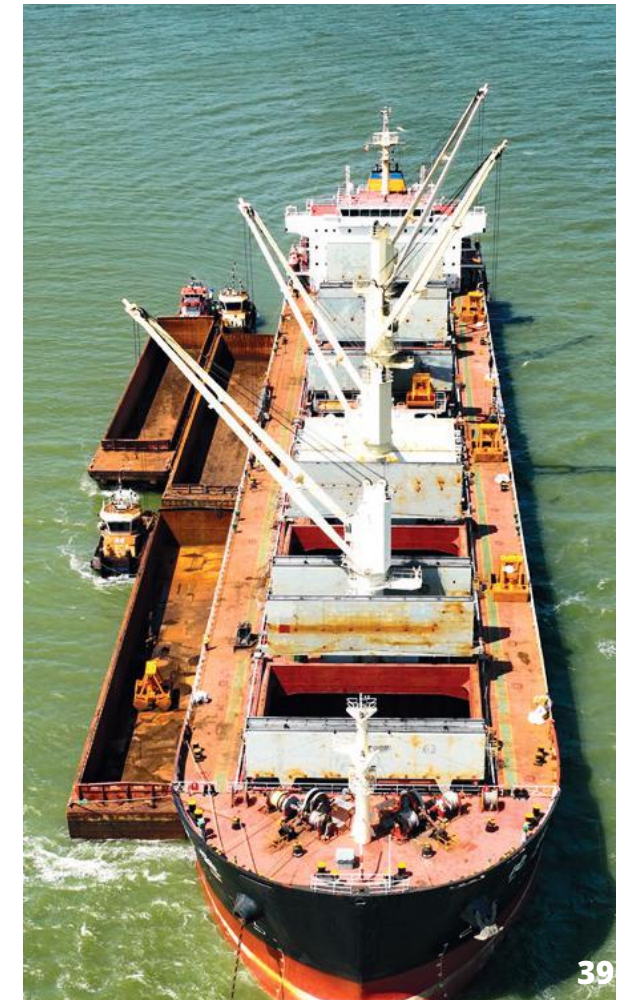
General Cargo



Barge Tows



Bulk Carrier





STEVEDORED CARGO

2021 - 2025

BARGE
DISCHARGE
PERFORMANCE

1.000MT
IN 40 MINUTES

CARGO MOVED
+5.890.000 MT

+560 VESSELS
ATTENDED

+100 STEVEDORING AND
CONSOLIDATION
OPERATIONS

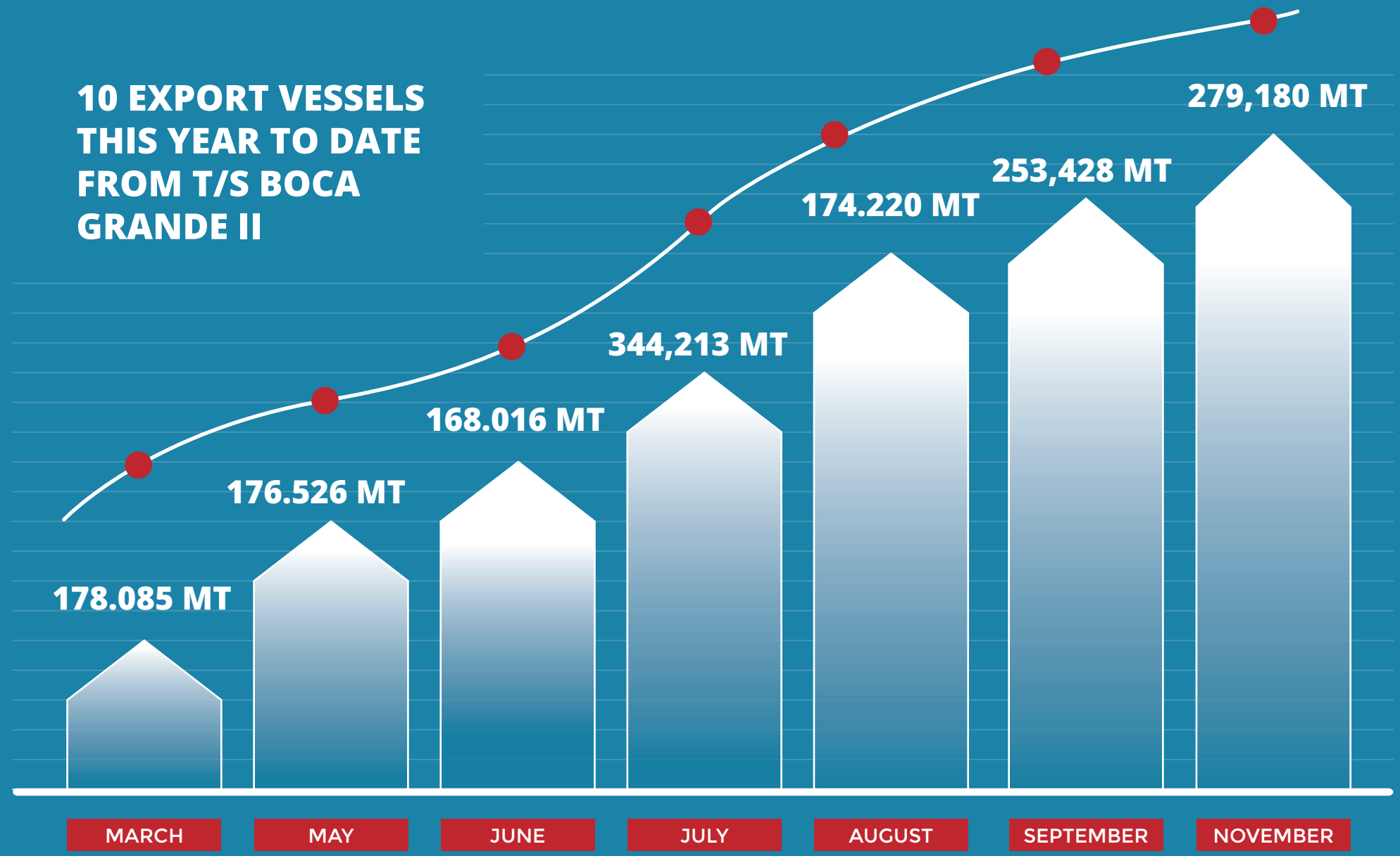
NUMBER OF
INSPECTIONS AND
CERTIFICATIONS

70 ANNUALLY



BOCA GRANDE II TRANSFER STATION MANAGEMENT (EXPORT GROWTH – 2025)

**10 EXPORT VESSELS
THIS YEAR TO DATE
FROM T/S BOCA
GRANDE II**





SOCIAL PROJECT

At Avante Bureau Shipping, we sail with purpose, with love for the river, and with gratitude toward the communities that welcome us.

That is why, through our social project “Somos de Cara al Río” (Facing the River), we strive to leave a positive footprint by supporting both the individual and collective growth of the Indigenous communities living near our areas of operation.

Between 2024 and 2025, we carried out medical assistance campaigns and donated school supplies to the communities of Isla de Fajardo, Curiapo, Paloma El Toro, and Brisas del Río Orinoco.





FACING THE RIVER





SUPPORTING SPORTS

At Avante Bureau Shipping, we firmly believe in the power of sports as a driving force for discipline, perseverance, and self-improvement. That is why our commitment goes beyond maritime boundaries to foster athletic talent, supporting initiatives that reflect our core values of teamwork, effort, and excellence.

Through Team Avante Dream Bike, we have strengthened our presence in the world of mountain biking, supporting outstanding athletes such as Yngrid Porras and Johan Rodríguez, who proudly represent Venezuelan determination and competitive spirit. Their dedication in every race mirrors the same commitment that drives Avante in every operation: always moving forward with purpose and passion.

Our support has also crossed borders, reaching the prestigious Cape Epic, international competition in South Africa, where these athletes have carried the names of Venezuela and Avante Bureau Shipping to world-class stages.

This partnership reaffirms our conviction that success—in both sports and the maritime industry—is built through effort, vision, and teamwork.







MARITIME AND PORT TRAINING

At Avante Bureau Shipping, we offer technical training (both on-site and online) for maritime and port personnel under the STCW Convention (“Standards of Training, Certification, and Watchkeeping”), as required by the International Maritime Organization (IMO).

These are the basic training standards for seafarers, first adopted by governments in 1978.

We offer comprehensive induction and training programs to meet these international standards.



MARINE BIOLOGY

MEDICAL CARE OMI

1.15 A-VI/4-2 OMI 1.15

BASIC TRAINING FOR HANDLING BALLAST WATER AND OTHER SEDIMENTS FROM SHIPS

LEADERSHIP AND TEAMWORK OMI 1.39

ADVANCED FIREFIGHTING

OMI 2.03 STCW VI/3 2.03

MARPOL ANNEX VI SOX NOX

BASIC FIRST AID OMI 1.13 STCW VI/3 1.13

OMI 1.13 STCW VI/3 1.13

SANITARY FIRST AID

OMI 1.14 STCW VI/4-1 1.14

FIRE PREVENTION AND FIREFIGHTING

OMI 1.20 STCW VI/1-2 1.20

PERSONAL SAFETY AND SOCIAL

RESPONSIBILITY OMI 1.21 STCW VI/1-4 1.21

PERSONAL SURVIVAL TECHNIQUES

OMI 1.19 STCW VI/1 1.19

MARINE ENVIRONMENTAL

AWARENESS OMI 1.38

BRIDGE MANEUVERING AND BRIDGE

TEAMWORK SIMULATOR OMI 1.22





CROWD MANAGEMENT, PASSENGER SAFETY AND TRAINING FOR PERSONNEL DIRECTLY PROVIDING SERVICES TO PASSENGERS ONBOARD PASSENGER SHIPS OMI 1.28

GENERAL OPERATOR SMSSM OMI 1.25

OPERATIONAL USE OF ELECTRONIC CHART DISPLAY INFORMATION SYSTEMS OMI 1.27

MANAGEMENT OF BRIDGE RESOURCES

BOAT AND SPEEDBOAT HANDLING PROFICIENCY OMI 1.24 STCW VI/2-2 1.24

ADVANCED TRAINING IN CHEMICAL TANKER LOADING OPERATIONS OMI 1.3 A-VI/1-2 OMI 1.03

HAZARDOUS, POTENTIALLY HAZARDOUS AND NOXIOUS CARGOES OMI 1.10 A-B-V II/2

RADAR NAVIGATION, RADAR POINTER AND HARP USE. RADAR NAVIGATION AT OPERATIONS LEVEL OMI 1.07 A-VI/1-2 OMI 1.07

ADVANCED TRAINING IN OIL TANKER LOADING OMI 1.02 A-VI/1-2 OMI 1.02

BASIC TRAINING IN LIQUEFIED GAS TANKER CARGO OPERATIONS OMI 1.04 A-VI/1-2 OMI 1.04

BASIC TRAINING IN OIL TANKER AND CHEMICAL TANKER LOADING OPERATIONS OMI 1.01 A-VI/1-1 OMI 1.01







CERTIFICATIONS

INTERNATIONAL CARRIER AGENT (SENIAT / CUSTOMS REGIME PERMIT)

CARGO CONSOLIDATOR AUTHORIZATION (INEA)

REGISTRY OF ENVIRONMENTAL CONSULTANTS (MINEC)

VESSEL SUPPLY AND PROVISIONING AUTHORIZATION (INEA)

SHIPPING COMPANY AUTHORIZATION (INEA)

SHIP AGENCY AUTHORIZATION (INEA)

REGISTRY OF ACTIVITIES CAPABLE OF DEGRADING THE ENVIRONMENT (RACDA)

ADMINISTRATIVE RULING SNAT/INA/GRA/DAA/URA2022. INTERNATIONAL SHIPPING CARRIER (SENIAT)

DOCUMENT OF COMPLIANCE (DOC) UNDER THE ISM CODE.

COMMERCIAL LICENSES

Platts Dimensions Pro: This platform gives us real-time, anywhere access to a wide range of commodity market reports, price benchmarks, news, data, forecasts, and supply chain trends and performance.

AXS Marine: Used for freight analysis across Dry Bulk, Tanker, and Container segments.

AVANTE FULL AHEAD BUTTON

The Avante Full Ahead Button was created as an institutional emblem that embodies the determination, discipline, and forward-driven spirit that define Avante Bureau Shipping.

Inspired by the command “Full Ahead”—used on navigation bridges to give maximum power to a vessel—this button symbolizes the decisive drive toward the future, the maritime vocation, and the strength of the human talent that propels our organization.

This symbol seeks to inspire new professionals to always navigate with vision, ethics, and leadership; to make firm decisions guided by the values that govern the international maritime industry; and to proudly embrace their role as part of the future of the shipping sector.

Receiving it means carrying the conviction to move forward with strength, overcome challenges, and stay the course toward seas of opportunity.

MEDAL OF HONOR FOR MERIT

The **Avante Bureau Shipping Medal of Honor for Merit** was created as a symbol of genuine and profound recognition for those who, through their administrative or operational duties, sustain the heartbeat of our organization every day.

Its purpose is to honor the dedication, excellence, and commitment that define our human talent—values that enable the company to move forward with strength and vision toward the future.








AVANTE BUREAU SHIPPING

AVANTE BUREU SHIPPING FZCO Building A1 IFZA
Business Park, United Arab Emirates, Dubai

 go.avante  Avante Bureau

 Go Avante  avantebureau.com

 info@avantebureau.com

