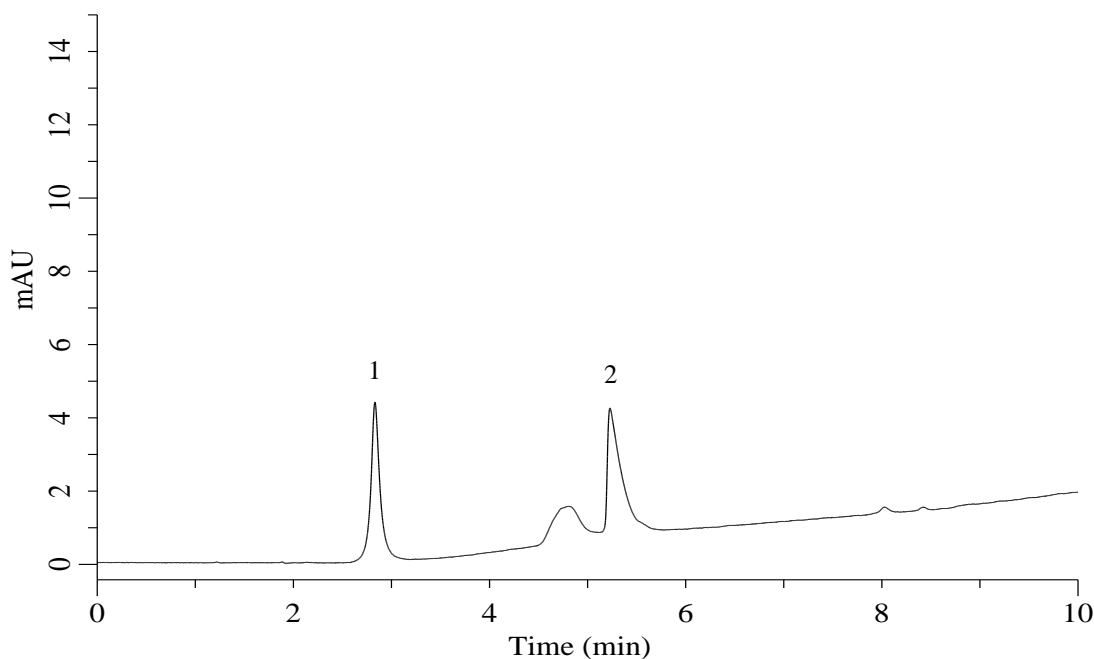


# InertSearch for LC

Inertsil Applications

## Analysis of Pyruvic acid and Phosphoenolpyruvic acid

Data No. LB770-0806



### Conditions

**Column** : InertSustain AX-C18 (GL Sciences Inc.)  
(3  $\mu$  m, 150 x 2.1 mm I.D., Metal-free hardware)  
**Column Cat. No.** : 5020-91059  
**Eluent** : A) 200 mM HCOONH<sub>4</sub> in (CH<sub>3</sub>CN/H<sub>2</sub>O = 50/50, v/v)  
B) 10 mM HCOONH<sub>4</sub> in H<sub>2</sub>O

### Analyte:

1. Pyruvic acid  
2. Phosphoenolpyruvic acid  
(200 mg/L each)

Time (min)	A (Vol%)	B (Vol%)
0.0	1	99
10.0	40	60

**Flow Rate** : 0.3 mL/min  
**Col. Temp.** : 40 °C  
**Detection** : UV 254 nm  
**Injection Vol.** : 2  $\mu$  L  
**Sample** : Standard