



VEHICLE INSPECTION  
AND WORKSHOP EQUIPMENT



# 2025 Catalog

INTERNATIONAL 

EMISSIONS

LIGHTING

GROUND



 [www.capelec.com](http://www.capelec.com)



Capelec SAS  
1130 rue des Marels Parc Euréka  
34000 Montpellier FRANCE  
+33 (0)4 67 156 156  
contact@capelec.com

Capelec Deutschland GmbH  
Gewerbestraße 8  
87787 Wolfertschwenden GERMANY  
(+49) 08334/98 95 323  
capelec.deutschland@capelec.de

Capelec India PVT. Ltd.  
Mez & 1st Floor, A-83,  
Okhla Industrial Area, Ph-II,  
New Delhi - 110020 INDIA  
+91-9654117338  
capelec.india@capelec.com



## DEVELOPMENT

1980

### Founding of the family business

In the 1980s, CAPELEC produced the first piezo sensors, and within a few years became the French leader in MOT/PTI equipment.

### Innovations and range expansion

Launch of the new-generation CAP3600 gas analyzer. New series of heavy-vehicle chassis alignment testers.

### Creation of German and Indian subsidiaries

In full expansion on European markets, CAPELEC asserts its commitment to internationalization and opens its subsidiaries CAPELEC Deutschland GmbH and CAPELEC India PVT. Ltd.

### From emissions monitoring to air quality

Through the acquisition of Pegasor Oy, a Finnish specialist in nanoparticle measurement, CAPELEC is moving into the technologies of the future and opening up its fields of application.

2024

## INNOVATION AND ANTICIPATION

For over 30 years, Capelec has been providing mobility professionals with high-performance, innovative equipment and software.

The company anticipates change, imagines and designs avant-garde solutions, and puts its expertise at the service of future technologies.

It supplies equipment and services that meet the highest quality standards.

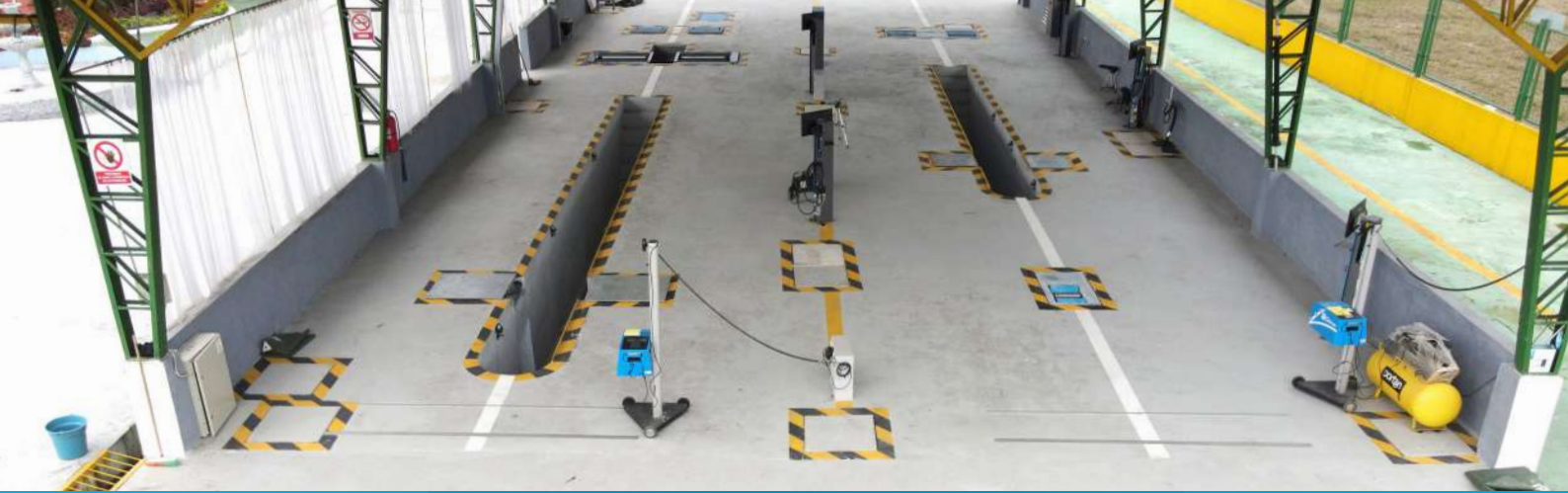
## DESIGN AND MANUFACTURING

Capelec designs, develops and manufactures all its solutions: mechanical, electronic and software.

The centralization of the production site, R&D office and services ensures responsiveness and quality of service.

CONCEPTION & FABRICATION  
FRANÇAISES





## A STRONG INTERNATIONAL COMMITMENT

Capelec exports to over 50 countries, on every continent and in every latitude.

Our technologies meet the needs and regulatory requirements of our various partnerships.



## CONCILIATING TRANSPORT, ENVIRONMENT AND SAFETY

The solutions we develop aim to improve transport conditions and road safety for users. Air quality monitoring is also at the heart of our efforts.

Capelec is an active member of major international organizations, and participates in studies focused on mobility and its challenges: worldwide, offering safer roads and limiting environmental and health nuisances.





# RESEARCH AND DEVELOPMENT

Capelec is constantly expanding its catalog.

**Nearly 25% of our workforce is dedicated to the Research and Development of innovative solutions.**

The range of equipment and software is complete and constantly evolving, to meet the sector's most demanding expectations.



METROLOGY



REGULATORY



TECHNOLOGIES

The Capelec Engineering Department stands out for its mastery of the full range of know-how.

It combines technological and regulatory expertise. Its areas of expertise are manifold: mechanical, electronic, IT, compliance and data centralization.

They are constantly on the lookout for new technologies to keep pace with progress, and are constantly upgrading their skills.

Reactive, they anticipate, analyze and readjust.



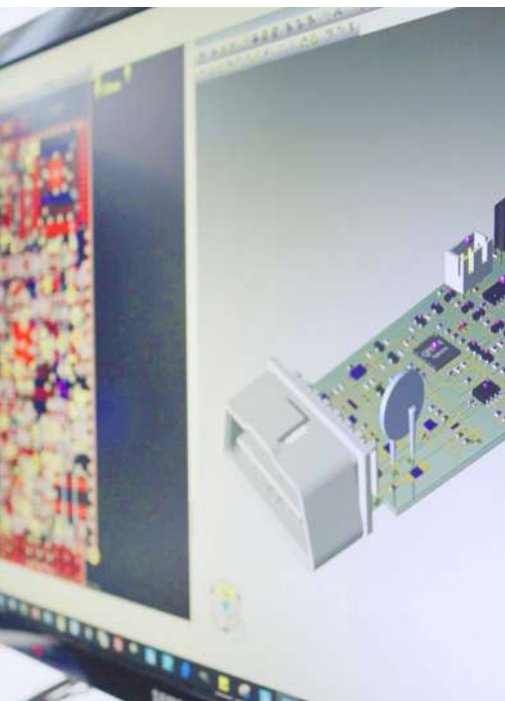
MECHANICS



ELECTRONICS



SOFTWARE





## SUPPORT

Our sales teams provide advice and support on equipment selection, maintenance and center implementation.

@ contact@capelec.com

+33(0)4 156 156

www.capelec.com

EXPERTISE



ASSISTANCE



WARRANTY

+1  
AN



## ASSISTANCE

Competent and available, the Technical Support Service diagnoses breakdowns and provides rapid solutions.

The remote maintenance service provides remote control of your connected equipment.

@ sav@capelec.com

+33(0)4 156 158

www.zendesk.com



## TRAINING

Our technicians are trained to install and maintain equipment.

Services are tailored to your needs:


- Commissioning
- Verification and calibration
- Operation





Find out more  
about complete  
range on our  
website



 [www.capelec.com](http://www.capelec.com)



Follow us to stay  
informed: news,  
videos, trade shows...



## VEHICLE INSPECTION | WORKSHOPS



### INSPECTION LINES

LV   HGV FULL TEST LANE	10
LV   HGV MOBILE INSPECTION LANE	12

---



### EMISSIONS

MULTIFUNCTION COMBINED STATIONS	17
GAS ANALYSERS	20
SMOKEMETERS	22
PARTICLE COUNTERS	23
EMISSIONS EXPERTISE	24
EOBD SCANTOOLS	30
MEASURING AND COMMUNICATION	32

---



### LIGHTING

HEADLIGHT TESTERS	34
LIGHTING EXPERTISE	36

---



### GROUND

LV   LV+ TEST LANE	41
HGV   MIXED TEST LANE	44
2, 3 AND 4 WHEELS BRAKE TESTERS	46
PLAY DETECTORS	52
DECELEROMETER	53

---

### OTHER TESTERS

SONOMETERS	55
SPEED-MEASURING SYSTEM	55
TAXIMETER TEST BENCH	56
TINT GLASS METER	56



# INSPECTION LINES

## PERIODICAL TECHNICAL INSPECTION



LV | HGV FULL TEST LANE

10



LV | HGV MOBILE INSPECTION LANE 12

# LV | HGV FULL TEST LANE

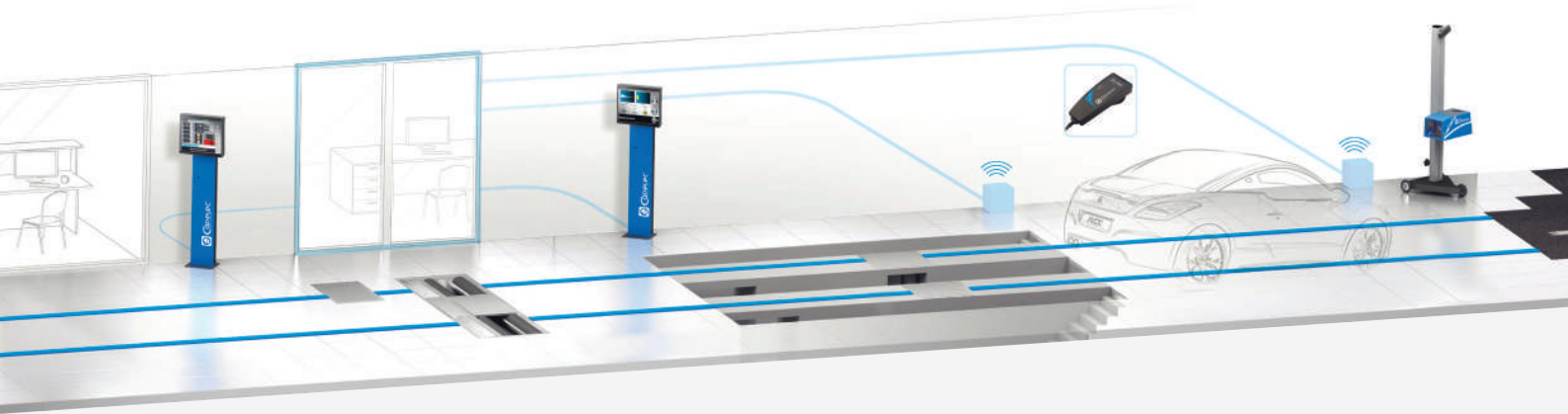
## EFFICIENT ROADWORTHINESS

The CAP20000 test lane includes all equipment required to carry out mandatory inspections, data centralization and easy commissioning.

### FULL TEST LANE FOR ALL VEHICLE TYPES







L CAT.



LV CAT.



HGV CAT.

**Emission Testing Equipment**

Gas analyser	✓	✓	
Smokemeter	✓	✓	✓
Particle counter	✓	✓	✓
EOBD scantool	✓	✓	✓
Tachometer	✓	✓	✓

**Headlight Testing Equipment**

Headlight tester	✓	✓	✓
------------------	---	---	---

**Brake Testing Equipment**

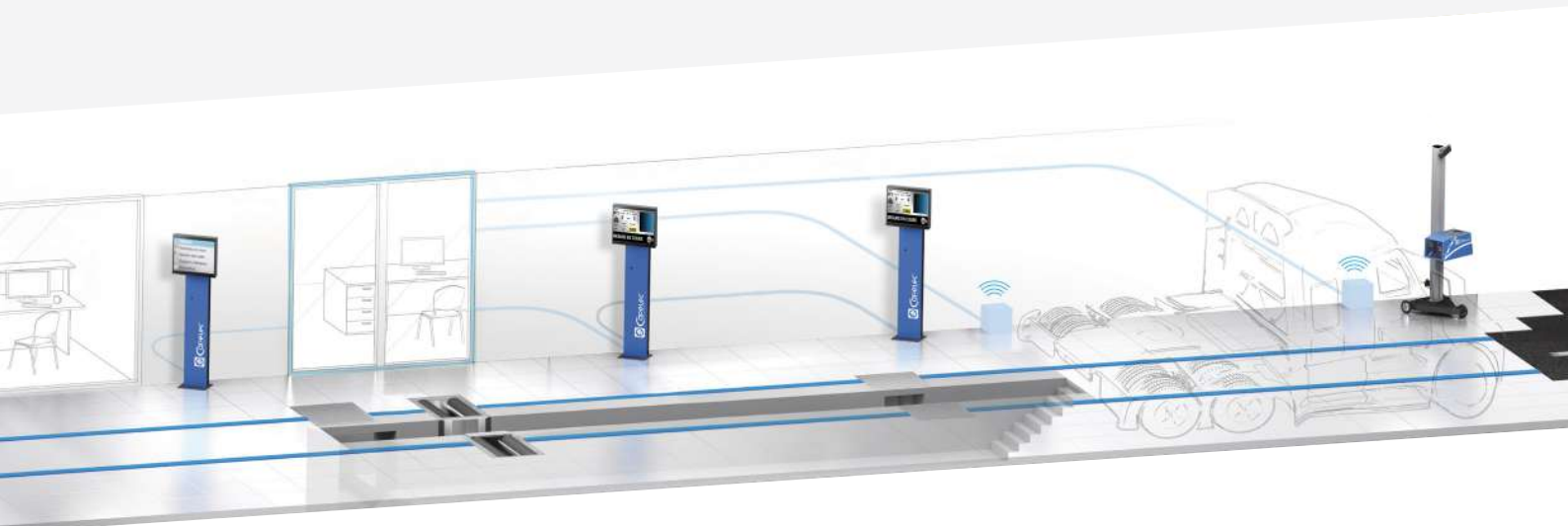
Brake tester	✓	✓	✓
Suspension tester		✓	✓*
Side slip tester		✓	
Play detectors		✓	✓
Decelerometer	✓	✓	✓

**Other testers**

Taximeter tester		✓	
Sonometer	✓	✓	✓

CAP20000 full testing line

\* Mixed test lane



# LV | HGV MOBILE INSPECTION LANE

## TRANSPORTABLE INSPECTION LINE

Complete, fast to operate and commission.

The CAP CHRONO 10510 mobile test unit performs the main inspections, and guarantee the safety and availability of vehicle fleet.







## LV AND HGV MOBILE TEST LANE

### Platform

Weight 6000 kg | 10' rollout

12 m semitrailer (king pin) | 3 axels

4 hydraulic supports

Power generator 25 kVA

Inspection area : 4 x 8 x 5 m

### Equipment

Roller brake tester

Suspension tester

Side slip tester

Play detector *(optional)*

Petrol & diesel emission testers

Headlight tester

PTI / MOT software management *(optional)*

### Container

ISO 40' container

5 m<sup>2</sup> office

Complete office desk

PC and printer

Air conditioning A/C

CAP CHRONO 10510





# EMISSIONS

## INSPECTION & WORKSHOP EQUIPMENT



MULTIFUNCTION COMBINED STATIONS 17



GAS ANALYSERS 20



SMOKEMETERS 22



PARTICLE COUNTERS 23



EMISSIONS EXPERTISE 24



EOBD SCANTOOLS 30  
MEASURING AND COMMUNICATION 32





# MODULAR SOLUTIONS

- 4 or 5 Gases Analyzer
  - Smokemeter
- Particle Analyzer
  - OBD Scantool
- Revolution Counter

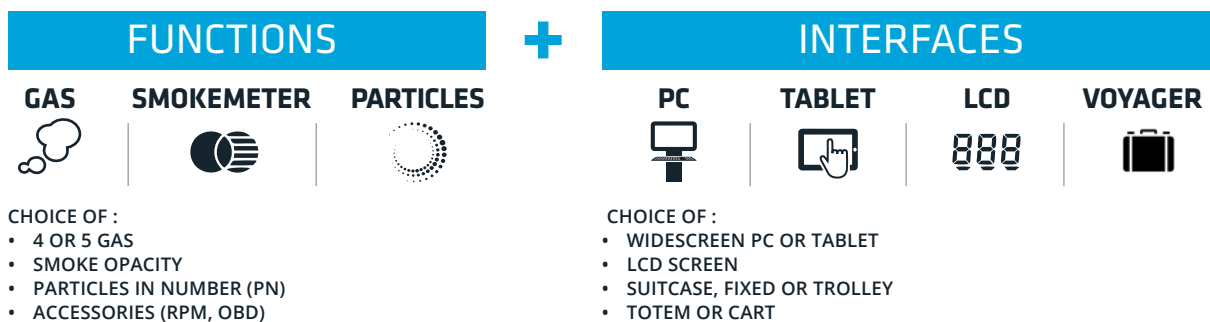
# GAS | SMOKEMETER | PARTICLES

**A complete range of equipment stand alone or combined.**

**FLEXIBILITY :** carry out all emissions tests for your business: vehicles inspection, repair workshop, fleet management.

**SCALABILITY :** adapt your equipment to technical and regulatory developments, and upgrade to new functions adding accessories or options.

## SETUP THE EQUIPMENT



1

- 1 Gas + Particle analyzer + touch-screen PC on Totem (optional mobile holder)
- 2 Stand-alone LCD gas analyzer (optional mobile holder)
- 3 Gas analyzer + Smokemeter + Tablet on mobile holder
- 4 Smokemeter
- 5 Portable gas analyzer



2



3



4



5

# MULTIFUNCTION COMBINED STATIONS

## GAS | SMOKEMETER | PARTICLES

Equipment combining main functions, available with different interfaces, and a wide choice of options and accessories.





### 3-FUNCTION



#### Modules :

- ✓ Gas analyser
- ✓ Smokemeter
- ✓ Particle analyser

#### Interface choice :

-  22" touch screen on Totem, remote control
-  10" tablet
-  LCD screen
-  Laptop suitcase

### 3-FUNCTION UNIT

#### 4 GASES | SMOKEMETER | PARTICLES

Wireless communication

Software 3 Functions

Accessory storage

- ✓ CAP3010 gas analyser
- ✓ CAP3030 BT smokemeter
- ✓ CAP3070 particle analyser
- ✓ CAP8535 RPM module
- ✓ CAP4350 EOBD module
- ✓ Sampling probes
- ✓ Oil temperature sensor

3-FUNCTION UNIT

#### GAS ANALYSER TECHNICAL SPECIFICATIONS

Complying with standards : OIML R99, Class 0, ISO 3930, BAR 97, MID

HC :	0-10 000 ppm (C <sub>6</sub> H <sub>14</sub> ) Hexane 0-20 000 ppm (C <sub>3</sub> H <sub>8</sub> ) Propane
CO :	Range 0 - 15 %
CO <sub>2</sub> :	Range 0 - 20%
O <sub>2</sub> :	Range 0 - 25 %
Lambda :	Range 0 - 9,99

#### SMOKEMETER TECHNICAL SPECIFICATIONS

Complying with standards : ISO 11614, NFR 10-025  
• Opacity range : 0,00 to 9,99 m<sup>-1</sup>  
• Opacity resolution : 0,01 m<sup>-1</sup>

#### PN TECHNICAL SPECIFICATIONS

Approvals: NMI, METAS, PTB  
Measuring range : 5 000 to 5 000 000 particles/cm<sup>3</sup>  
Resolution of indication : 1000 particles/cm<sup>3</sup>  
Extended Diffusion Charging Technology

- ✓ DUAL MODES : INSPECTION & WORKSHOPS

### 2-FUNCTION



### CAP3201 STANDALONE

#### 4 GASES | SMOKEMETER

RS232 communication

LCD display | 5 key keyboard | Built-in printer

S3201 software

- ✓ CAP3210 gas analyser
- ✓ CAP3030 smokemeter
- ✓ RPM inductive and piezo sensor
- ✓ Sampling probes
- ✓ Oil temperature sensor

CAP3201EX-GO4

#### GAS ANALYSER TECHNICAL SPECIFICATIONS

Complying with standards : OIML R99, Class 0, ISO 3930, BAR 97, MID

HC :	0-10 000 ppm (C <sub>6</sub> H <sub>14</sub> ) Hexane 0-20 000 ppm (C <sub>3</sub> H <sub>8</sub> ) Propane
CO :	Range 0 - 15 %
CO <sub>2</sub> :	Range 0 - 20%
O <sub>2</sub> :	Range 0 - 25 %
Lambda :	Range 0 - 9,99

#### SMOKEMETER TECHNICAL SPECIFICATIONS

Complying with standards : ISO 11614, NFR 10-025  
• Opacity range : 0,00 to 9,99 m<sup>-1</sup>  
• Opacity resolution : 0,01 m<sup>-1</sup>

- ✓ DUAL MODES : INSPECTION & WORKSHOPS





## CAP3550 VOYAGER

### 4 GASES | SMOKEMETER

Wireless communication

S3550 software

Carrying cases

- ✓ Suitcase 1 : CAP3010 gas analyser
- ✓ Suitcase 2 : 10" tablet & accessories
- ✓ CAP3030 BT smokemeter
- ✓ Sampling probes
- ✓ Oil temperature sensor

CAP3550EX-4GO

### GAS ANALYSER TECHNICAL SPECIFICATIONS

Complying with standards : OIML R99, Class 0, ISO 3930, BAR 97, MID

HC : 0-10 000 ppm (C<sub>6</sub>H<sub>14</sub>) Hexane  
0-20 000 ppm (C<sub>3</sub>H<sub>8</sub>) Propane

CO : Range 0 - 15 %

CO<sub>2</sub> : Range 0 - 20%

O<sub>2</sub> : Range 0 - 25 %

Lambda : Range 0 - 9,99

### SMOKEMETER TECHNICAL SPECIFICATIONS

Complying with standards : ISO 11614, NFR 10-025

- Opacity range : 0,00 to 9,99 m<sup>-1</sup>
- Opacity resolution : 0,01 m<sup>-1</sup>

☑ DUAL MODES : INSPECTION & WORKSHOPS



## CAP3500 TABLET

### 4 GASES | SMOKEMETER

Wireless communication

S3500 software

Accessory storage

- ✓ CAP3010 gas analyser
- ✓ CAP3030 BT smokemeter
- ✓ 10" tablet and mobile holder
- ✓ Sampling probes
- ✓ Oil temperature sensor

CAP3500EX-GO8

### GAS ANALYSER TECHNICAL SPECIFICATIONS

Complying with standards : OIML R99, Class 0, ISO 3930, BAR 97, MID

HC : 0-10 000 ppm (C<sub>6</sub>H<sub>14</sub>) Hexane  
0-20 000 ppm (C<sub>3</sub>H<sub>8</sub>) Propane

CO : Range 0 - 15 %

CO<sub>2</sub> : Range 0 - 20%

O<sub>2</sub> : Range 0 - 25 %

Lambda : Range 0 - 9,99

### SMOKEMETER TECHNICAL SPECIFICATIONS

Complying with standards : ISO 11614, NFR 10-025

- Opacity range : 0,00 to 9,99 m<sup>-1</sup>
- Opacity resolution : 0,01 m<sup>-1</sup>

☑ DUAL MODES : INSPECTION & WORKSHOPS



## CAP3600 TOTEM

### 4 GASES | SMOKEMETER

Wireless communication

S3600 software

Accessory storage

- ✓ CAP3010 gas analyser
- ✓ CAP3030 BT smokemeter
- ✓ 22" touch screen on Totem pole
- ✓ Remote control
- ✓ Sampling probes
- ✓ Oil temperature sensor

CAP3600EX-GOM

### GAS ANALYSER TECHNICAL SPECIFICATIONS

Complying with standards : OIML R99, Class 0, ISO 3930, BAR 97, MID

HC : 0-10 000 ppm (C<sub>6</sub>H<sub>14</sub>) Hexane  
0-20 000 ppm (C<sub>3</sub>H<sub>8</sub>) Propane

CO : Range 0 - 15 %

CO<sub>2</sub> : Range 0 - 20%

O<sub>2</sub> : Range 0 - 25 %

Lambda : Range 0 - 9,99

### SMOKEMETER TECHNICAL SPECIFICATIONS

Complying with standards : ISO 11614, NFR 10-025

- Opacity range : 0,00 to 9,99 m<sup>-1</sup>
- Opacity resolution : 0,01 m<sup>-1</sup>

☑ DUAL MODES : INSPECTION & WORKSHOPS

# GAS ANALYSERS

## GASOLINE ENGINES

Measurement of level of the 4 gases concentration emitted by combustion engines : HC, O<sub>2</sub>, CO et CO<sub>2</sub>.  
Interface and functions differ according to model.



### CAP3201 STANDALONE

#### 4 GASES

RS232 communication

LCD display | 5 key keyboard | Built-in printer

S3201 software

- ✓ CAP3210 gas analyser
- ✓ RPM inductive and piezo sensor
- ✓ Sampling probe
- ✓ Oil temperature sensor

CAP3201EX-G

#### GAS ANALYSER TECHNICAL SPECIFICATIONS

Complying with standards : OIML R99, Class 0, ISO 3930, BAR 97, MID

HC : 0-10 000 ppm (C<sub>6</sub>H<sub>14</sub>) Hexane  
0-20 000 ppm (C<sub>3</sub>H<sub>8</sub>) Propane

CO : Range 0 - 15 %

CO<sub>2</sub> : Range 0 - 20%

O<sub>2</sub> : Range 0 - 25 %

Lambda : Range 0 - 9,99

✓ DUAL MODES : INSPECTION & WORKSHOPS



### CAP3500 TABLET

#### 4 GASES

Wireless communication

S3500 software

Accessory storage

- ✓ CAP3010 gas analyser
- ✓ 10" tablet and mobile holder
- ✓ Sampling probe
- ✓ Oil temperature sensor

CAP3500EX-G8

#### GAS ANALYSER TECHNICAL SPECIFICATIONS

Complying with standards : OIML R99, Class 0, ISO 3930, BAR 97, MID

HC : 0-10 000 ppm (C<sub>6</sub>H<sub>14</sub>) Hexane  
0-20 000 ppm (C<sub>3</sub>H<sub>8</sub>) Propane

CO : Range 0 - 15 %

CO<sub>2</sub> : Range 0 - 20%

O<sub>2</sub> : Range 0 - 25 %

Lambda : Range 0 - 9,99

✓ DUAL MODES : INSPECTION & WORKSHOPS



## CAP3550 VOYAGER

### 4 GASES

Wireless communication

S3550 software

Carrying cases

- ✓ Suitcase 1 : CAP3010 gas analyser
- ✓ Suitcase 2 : 10" tablet & accessories
- ✓ Sampling probe
- ✓ Oil temperature sensor

CAP3550EX-G

### GAS ANALYSER TECHNICAL SPECIFICATIONS

Complying with standards : OIML R99, Class 0, ISO 3930, BAR 97, MID

HC : 0-10 000 ppm (C<sub>6</sub>H<sub>14</sub>) Hexane  
0-20 000 ppm (C<sub>3</sub>H<sub>8</sub>) Propane

CO : Range 0 - 15 %

CO<sub>2</sub> : Range 0 - 20%

O<sub>2</sub> : Range 0 - 25 %

Lambda : Range 0 - 9,99

- ✓ DUAL MODES : INSPECTION & WORKSHOPS



## CAP3600 TOTEM

### 4 GASES

Wireless communication

S3600 software

Accessory storage

- ✓ CAP3010 gas analyser
- ✓ 22" touch screen on Totem pole
- ✓ Remote control
- ✓ Sampling probe
- ✓ Oil temperature sensor

CAP3600EX-GM

### GAS ANALYSER TECHNICAL SPECIFICATIONS

Complying with standards : OIML R99, Class 0, ISO 3930, BAR 97, MID

HC : 0-10 000 ppm (C<sub>6</sub>H<sub>14</sub>) Hexane  
0-20 000 ppm (C<sub>3</sub>H<sub>8</sub>) Propane

CO : Range 0 - 15 %

CO<sub>2</sub> : Range 0 - 20%

O<sub>2</sub> : Range 0 - 25 %

Lambda : Range 0 - 9,99

- ✓ DUAL MODES : INSPECTION & WORKSHOPS



# SMOKEMETERS

## DIESEL ENGINES

Measure exhaust fumes from internal combustion engines. Available with or without interface.

Features differ according to model.



### CAP3201 STANDALONE

#### SMOKEMETER

RS232 communication

LCD display | 5 key keyboard | Built-in printer

S3201 software

- ✓ CAP3030 smokemeter
- ✓ Piezo sensor
- ✓ Sampling probe
- ✓ Oil temperature sensor

CAP3200EX-O

#### SMOKEMETER TECHNICAL SPECIFICATIONS

Complying with standards : ISO 11614, NFR 10-025

- Opacity range : 0,00 to 9,99 m<sup>-1</sup>
- Opacity resolution : 0,01 m<sup>-1</sup>

✓ DUAL MODES : INSPECTION & WORKSHOPS



### CAP3550 VOYAGER

#### SMOKEMETER

Wireless communication

S3550 software

Carrying case

- ✓ Suitcase : 10" tablet and accessories
- ✓ CAP3030 BT smokemeter
- ✓ Sampling probe
- ✓ Oil temperature sensor

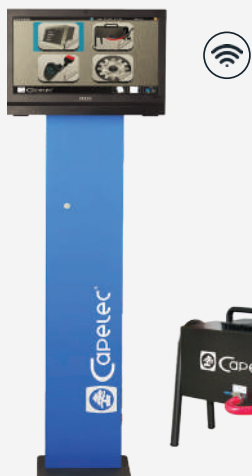
CAP3550EX-O

#### SMOKEMETER TECHNICAL SPECIFICATIONS

Complying with standards : ISO 11614, NFR 10-025

- Opacity range : 0,00 to 9,99 m<sup>-1</sup>
- Opacity resolution : 0,01 m<sup>-1</sup>

✓ DUAL MODES : INSPECTION & WORKSHOPS



### CAP3600 TOTEM

#### SMOKEMETER

Wireless communication

S3600 software

Accessory storage

- ✓ CAP3030 BT smokemeter
- ✓ 22" touch screen on Totem pole
- ✓ Remote control
- ✓ Sampling probe
- ✓ Oil temperature sensor

CAP3600EX-OM

#### SMOKEMETER TECHNICAL SPECIFICATIONS

Complying with standards : ISO 11614, NFR 10-025

- Opacity range : 0,00 to 9,99 m<sup>-1</sup>
- Opacity resolution : 0,01 m<sup>-1</sup>

✓ DUAL MODES : INSPECTION & WORKSHOPS

# PARTICLE COUNTERS

## DIESEL ENGINES

The fine-particle count indicates whether the vehicle's particulate filter is working properly.



### CAP3500 TABLET

#### PARTICLES

Wireless communication

S3070 software

- ✓ CAP3070 particle counter with trolley
- ✓ 10" tablet and accessories
- ✓ Heated sampling probe

CAP3500EX-P8

#### PN TECHNICAL SPECIFICATIONS

Approvals: NMI, METAS, PTB

Measuring range : 5 000 to 5 000 000 particles/cm<sup>3</sup>

Resolution of indication : 1000 particles/cm<sup>3</sup>

Extended Diffusion Charging Technology

✓ DUAL MODES : INSPECTION & WORKSHOPS



### CAP3600 TOTEM

#### PARTICLES

Wireless communication

S3070 software

Accessory storage

- ✓ CAP3070 particle counter
- ✓ 22" touch screen on Totem pole
- ✓ Remote control
- ✓ Heated sampling probe

CAP3600EX-P

#### PN TECHNICAL SPECIFICATIONS

Approvals: NMI, METAS, PTB

Measuring range : 5 000 to 5 000 000 particles/cm<sup>3</sup>

Resolution of indication : 1000 particles/cm<sup>3</sup>

Extended Diffusion Charging Technology

✓ DUAL MODES : INSPECTION & WORKSHOPS

## AFTERMARKET EMISSION EXPERTISE



## 4 GASES | NO<sub>x</sub> | SMOKEMETER

### Aftermarket exhaust emissions compliance.

The WORKSHOP® range combines expertise in PTI / MOT equipment optimised to the garage market.

It enables a complete diagnosis to be made before repair, and a detailed report to be produced after servicing.

### WORKSHOP® FEATURES

#### COMPLIANCE



#### DIAGNOSTIC



#### REPORTS



- Pre-technical inspection
- Complete engine combustion diagnostics
- Pre-post repair tests
- Technical and customer detailed reports



1

- 1 CAP3600 Workshop® Totem
- 2 CAP3500 Workshop® Tablet
- 3 PTI/MOT procédure
- 4 Live value curves
- 5 Before / After report



2



3

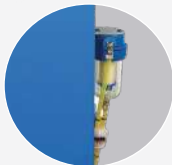


4



5





## CAP3600 WORKSHOP® TOTEM

### 5 GASES | SMOKEMETER

Wireless communication

S3600 WS software

Accessory storage

- ✓ CAP3010 gas analyser
- ✓ CAP3030 BT smokemeter
- ✓ CAP8535 RPM module
- ✓ CAP4350 EOBD module
- ✓ 22" touch screen on mobile Totem pole
- ✓ Remote control
- ✓ Sampling probes
- ✓ Oil temperature sensor

CAP3600EXWS-GOM

### GAS ANALYSER TECHNICAL SPECIFICATIONS

Complying with standards : OIML R99, Class 0, ISO 3930, BAR 97, MID

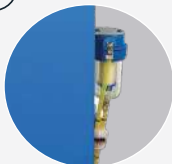
HC :	0-10 000 ppm (C <sub>6</sub> H <sub>14</sub> ) Hexane
	0-20 000 ppm (C <sub>3</sub> H <sub>8</sub> ) Propane
CO :	Range 0 - 15 %
CO <sub>2</sub> :	Range 0 - 20%
O <sub>2</sub> :	Range 0 - 25 %
Lambda :	Range 0 - 9,99
NOx :	0 - 5 000 ppm

### SMOKEMETER TECHNICAL SPECIFICATIONS

Complying with standards : ISO 11614, NFR 10-025

- Opacity range : 0,00 to 9,99 m<sup>-1</sup>
- Opacity resolution : 0,01 m<sup>-1</sup>

✓ DUAL MODES : INSPECTION & WORKSHOPS



## CAP3500 WORKSHOP® TABLET

### 5 GASES | SMOKEMETER

Wireless communication

S3500 WS software

Accessory storage

- ✓ CAP3010 gas analyser
- ✓ CAP3030 BT smokemeter
- ✓ CAP8520 RPM module
- ✓ CAP4350 EOBD module
- ✓ 10" tablet and mobile holder
- ✓ Sampling probes
- ✓ Oil temperature sensor

CAP3500EX-5GO4

### GAS ANALYSER TECHNICAL SPECIFICATIONS

Complying with standards : OIML R99, Class 0, ISO 3930, BAR 97, MID

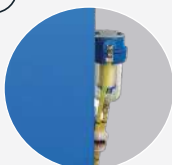
HC :	0-10 000 ppm (C <sub>6</sub> H <sub>14</sub> ) Hexane
	0-20 000 ppm (C <sub>3</sub> H <sub>8</sub> ) Propane
CO :	Range 0 - 15 %
CO <sub>2</sub> :	Range 0 - 20%
O <sub>2</sub> :	Range 0 - 25 %
Lambda :	Range 0 - 9,99
NOx :	0 - 5 000 ppm

### SMOKEMETER TECHNICAL SPECIFICATIONS

Complying with standards : ISO 11614, NFR 10-025

- Opacity range : 0,00 to 9,99 m<sup>-1</sup>
- Opacity resolution : 0,01 m<sup>-1</sup>

✓ DUAL MODES : INSPECTION & WORKSHOPS



## CAP3500 WORKSHOP® TABLET

### 5 GASES

Eco Entretien approved

Wireless communication

S3600 WS software

Accessory storage

- ✓ CAP3010 gas analyser
- ✓ CAP4350 EOBD module
- ✓ 10" tablet and mobile holder
- ✓ Sampling probe
- ✓ Oil temperature sensor

CAP3500EE-5G

### GAS ANALYSER TECHNICAL SPECIFICATIONS

Complying with standards : OIML R99, Class 0, ISO 3930, BAR 97, MID

HC :	0-10 000 ppm (C <sub>6</sub> H <sub>14</sub> ) Hexane
	0-20 000 ppm (C <sub>3</sub> H <sub>8</sub> ) Propane
CO :	Range 0 - 15 %
CO <sub>2</sub> :	Range 0 - 20%
O <sub>2</sub> :	Range 0 - 25 %
Lambda :	Range 0 - 9,99
NOx :	0 - 5 000 ppm

✓ DUAL MODES : INSPECTION & WORKSHOPS

# COMMON OPTIONS

## MEASUREMENT



### PN particle counter module

Set to change into a combi unit  
Extended Diffusion Charging technology  
LV probe: 2m | HGV probe: 4m

LV CAP3070EX-LV

HGV CAP3070EX-HGV



### HGV opacity smokemeter probe and hose

Heated probe | 2,50m long  
Hose | 3,16m long

SSE01099



### HGV smokemeter extension pipe

Rod, pipe and handle  
2m long  
Storage handle

CAP3030-CPPL

CAP3030-CPPLC (heated)



### Exhaust probe extender

PRE00123



### Motorbike gaz analyser set

Feet and ajustable support  
Universal exhaust pipe adaptor  
Exhaust pipe extension

CAP3200-KITMOTO



### Mobile trolley for HGV smokemeter

4-wheel mobile base, brake  
CAP3030 opacity cell slot | Heated long probe  
230V power supply reel

CAP3030XX-SPL



### Smokemeter hose

1.5m PRO01028

2m PRO01030

3m PRO03602

3.5m PRO03817

## RPM & OIL TEMPERATURE



### Infrared temperature probe

Laser pointer | LCD screen  
Bluetooth wireless connection | Powered 12V  
Requires CAP1220

CAP1330



### Tachometer & thermometer | Battery

Battery cable & cigar-lighter cables  
Temperature probe | Bluetooth communication  
Requires CAP1220

CAP8520



### Thermometer & tachometer | Bat and Vib

Temperature probe | Battery and cigar-lighter cables  
Wireless Bluetooth connection  
LCD screen | Vibration sensor | Requires CAP1220

CAP8535



### Contactless tachometer | Antenna technology

Gasoline engines speed measurement  
Cable length 5m | Mounting : magnet  
Integration : CAP853x

SSE01416

## EOBD, MOBILITY, COMMUNICATION



### Connected EOBD reader

Bluetooth | Wireless connection | Universal scan-  
tool | Range of vehicles : light vehicles, HGV  
Cables and EOBD plug

CAP4350



### Cell trolley

3 wheels | Brake | Handle  
Compatible with opacity cell series CAP3030  
& CAP3070

PRO03496



### RPM connection | PC

Cable between PC and CAP8535

SSE00810-PC



### Probe holder

To be positioned close to the exhaust pipe

PRO03030

# CAP3201 OPTIONS

## MEASUREMENT



**NOx measurement set**  
Adaptable to CAP3201 series

CAP3201-NOX



**Smokemeter module CAP3030 v2**  
Set to upgrade a gas analyser into a combi unit  
Complete cell probe, wires, connections

CAP3200-KITOPA-2



**Tachometer on battery**  
CPU board  
CAP3201 set  
Battery cable & cigar-lighter cables

CAP3200-RPMBAT



**RPM connection | CAP3201 TTL**  
Cable between CAP3201 and CAP8535

SSE00870

## COMMUNICATION



**Smokemeter connection**  
1m cable | Compatible with CAP3201 series | CAP85XX

SSE00057



**WIN 3200 software | Windows OS**  
Operating with CAP32XX series  
USB key | Connection cable

CAP3200-WIN3200



**Keyboard**  
Wired | PS2 connector

AZERTY keyboard

PRO00518

QWERTY keyboard

PRO00968



**Data encoder**  
Communication ports : USB, RJ45, RS232  
Linux OS

RS232 connection

CAP1830F-R

Wireless Bluetooth connection

CAP1830F-B

## MOBILITY



**Workshop trolley | Wheel base | Steel frame**  
Compatible with CAP32XX series  
Colours : grey, blue | CAPELEC branded

PRO03106



**Power converter | Cigar lighter**  
12VDC/230V AC

PRO01807



**RS232 converter to Bluetooth**

CAP3201 control port antenna

CAP1220

CAP32XX PC communication antenna

CAP1223

CAP3030 smoke cell antenna

CAP1221



## CAP3500/CAP3600 OPTIONS

### MEASUREMENT



**Smokemeter module CAP3030 v2 | Horizontal**  
Upgrading a gas analyser into a combined unit  
Probe | Holder | Wireless connection  
Bluetooth | S3030 software | Power supply cable

CAP3600M-OPA4



**4 gas analyser module | Wires & connectors**  
Upgrading a smoke meter into a combined unit  
Temperature probe | Filters  
S3600 Software | MID approval

CAP3600M-GAZEU



**NOx measurement set**

CAP3600M-NOX

### ERGONOMY



**Additional screen**  
With totem bracket

22" additional screen

CAP00941

22" additional touchscreen

CAP00945

27" additional touchscreen

CAP00947



**IR remote control**  
USB | infrared receiver  
Compatible with CAP9XXX & CAP3XXX series

CAP1000-RCIR-USB

## CAP3600 OPTIONS

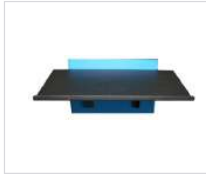
### MOBILITY



**Mobile base | Metal | Grey**  
4 steering wheels | Protective bumper | Brake  
Compatible with CAPELEC totem

PRO03017

### ERGONOMY



**Keyboard holder | Adjustable**  
Adaptable to Capelec totem

PRO03029



**Wireless keyboard**  
For PC | Bluetooth  
QWERTY type

PRO03425

### STORAGE



**Screen protective cover**  
Polyester fabrics | Black

PRO02686

## CAP3070 OPTIONS



**Heated long probe PNC**  
Heated probe  
Insulation | Socket | Handle

Length 2 m

SSE01316

Length 4 m

SSE01317

# EOBD SCANTOOLS




## ON BOARD DIAGNOSTIC

Systems for accessing on-board computer information: reading DTC codes and ECU data.

### OBD / OBD/FCM COMPLIANT



**Connection :**

-  22" touch screen on Totem, remote control
-  LCD screen
-  Laptop suitcase

### EOBD READER CONNECTED

**ALL VEHICLE TYPES**

- \_\_\_\_ All brands and vehicles
- \_\_\_\_ OBD/FCM compliant
- \_\_\_\_ Bluetooth transmission
- \_\_\_\_ Cable-free or extension cable
- \_\_\_\_ Interchangeable with CAP4220 and CAP4250

- ✓ CAP4350 EOBD module
- ✓ Cable
- ✓ Windows

CAP4350



### EOBD READER STANDALONE

**ALL VEHICLE TYPES**

- \_\_\_\_ All brands and vehicles
- \_\_\_\_ Bluetooth transmission
- \_\_\_\_ Keyboard | LCD screen

- ✓ CAP4120 or CAP4150 EOBD module with cable
- ✓ Protective case

<b>LV</b>	CAP4120-EN
<b>LV+</b>	CAP4150-EX



## EOBD OPTIONS

### COMMUNICATION



**Extension cable**  
EOBD extension cord

PRO04004



**Data encoder**  
Communication ports : USB, RJ45, RS232  
Linux OS

RS232 connection

CAP1830F-R

Wireless Bluetooth connection

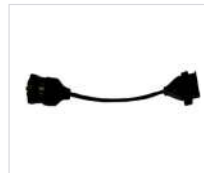
CAP1830F-B

### ACCESSORIES



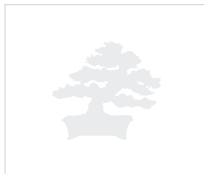
**Black holder | Screen protection**  
Compatible with CAP4120 series and CAP4150

PRO01055



**Truck adaptor plug**  
OBD round connector  
Heavy trucks

PRO01597



**Shoulder strap**  
Protective cover | Black polyester  
For CAP4120 & CAP4150 series

PRO02386

### PRINTERS



**Thermal printer | Wireless BT**  
Battery and charger

RS232 connection

CAP1000-IMPRS

Wireless Bluetooth connection

CAP1000-IMPBT

# MEASURING AND COMMUNICATION DEVICES



## TACHOMETER THERMOMETER

### REVOLUTION COUNTER

- Oil temperature
- Dual mode : battery and vibration
- Bluetooth transmission
- Keyboard | LCD screen
- S8535 software

✓ CAP8535 revolution counter module

CAP8535



## CONTACTLESS TACHOMETER

- Antenna technology
- Gasoline engines speed measurement
- Cable length 5m | Mounting : magnet
- Integration : CAP853x

✓ SSE01416 module

SSE01416

# LIGHTING

## INSPECTION & WORKSHOP EQUIPMENT



HEADLIGHT TESTERS

34



LIGHTING EXPERTISE

36



# HEADLIGHT TESTERS

## ALL HEADLAMP TYPES

Capelec headlamp testers provide fast and precise testing. The range adapts to all environment : connected, automated or mechanical, wheeled or rail-mounted.



✓ Wheel base  
Also available with rail base.

### CAP2100 MECHANICAL

#### HEADLAMPS: HALOGEN, XENON, LED

- \_\_\_\_ Laser alignment
- \_\_\_\_ 1.8 m aluminum column
- \_\_\_\_ Fresnel lens | Counterweight

CAP2100-W

#### TECHNICAL SPECIFICATIONS

Cut-off



✓ Wheel base  
Also available with rail base.

### CAP2300 ELECTRONIC

#### WITH PHOTODIODES

- \_\_\_\_ Headlamps: halogen, xenon, LED
- \_\_\_\_ Laser alignment | Positioning assistance | Mirror
- \_\_\_\_ 1.8 m aluminum column
- \_\_\_\_ Fresnel lens | Counterweight
- \_\_\_\_ S2300 software
- \_\_\_\_ Multilingual | LCD display
- \_\_\_\_ Connection: RS232 communication port

CAP2300EX-WR

#### TECHNICAL SPECIFICATIONS

- Angle measurement
  - Cut-off measurement : from +2% to -4%
  - Accuracy : +/- 0,2%
- Intensity measurement
  - Cut-off measurement : 0/125 kcd or 0/200 lux
  - Accuracy : 10%
- Lateral : yes / no



✓ Wheel base  
Also available with rail base.

### CAP2500 CONNECTED

#### WITH PHOTODIODES

- \_\_\_\_ Headlamps: halogen, xenon, LED
- \_\_\_\_ Laser alignment | Positioning assistance
- \_\_\_\_ 1.8 m aluminum column
- \_\_\_\_ Fresnel lens | Counterweight
- \_\_\_\_ S2300 software | Precise light sensor
- \_\_\_\_ Multilingual | LCD display
- \_\_\_\_ Connection: RS232 communication port, Bluetooth
- \_\_\_\_ Battery and charger

	Wheel base	Rails base *
Right drive	CAP2500EX-TDWB	CAP2500EX-TDRB
Left drive	CAP2500EX-TGWB	CAP2500EX-TGRB

\* Rails not included.

#### TECHNICAL SPECIFICATIONS

- Angle measurement
  - Cut-off measurement : from +2% to -4%
  - Accuracy : +/- 0,2%
- Intensity measurement
  - Cut-off measurement : 0/125 kcd or 0/200 lux
  - Accuracy : 10%
- Lateral : yes / no

✓ DUAL MODES : INSPECTION & WORKSHOPS

For a rail base, add the appropriate set of rails. See options.



✓ Wheel base  
Also available with rail base.

For a rail base, add the appropriate set of rails. See options.

### CAP2600 CONNECTED CAMERA

#### CDD CAMERA

Headlamps: halogen, xenon, LED, AFS

Tilt compensation

Laser alignment | Positioning assistance

S2600 software | Data transmission

Multilingual | Color touch screen

Connections: RJ45, USB, Wifi

Long-life battery

Charger

	Wheel base	Rails base *
Wired	CAP2600EX-W	CAP2600EX-S
Wireless	CAP2600EX-WW	CAP2600EX-SW

\* Rails not included.

#### TECHNICAL SPECIFICATIONS

- Angle measurement
- Cut-off measurement : from +6% to -6%
  - Accuracy : +/- 0,2%
  - Side deviation : -10/+10 %
  - Yaw angle : -90/+90°
  - Roll angle : -90/+90°
- Intensity measurement
- Cut-off measurement : 0/125 kcd or 0/200 lux
  - Accuracy : 10%
- AFS adjustment



✓ Wheel base  
Also available with rail base.

### CAP2600 CONNECTED PRINTER

#### WORKSHOP VERSION | INTEGRATED PRINTER

CDD camera

Headlamps: halogen, xenon, LED, AFS

Tilt compensation

Laser alignment | Positioning assistance

S2600 software

Multilingual | Color touch screen

Connections: RJ45, USB, Wifi

Long-life battery and charger

CAP2600AT-WIGA

#### TECHNICAL SPECIFICATIONS

- Angle measurement
- Cut-off measurement : from +6% to -6%
  - Accuracy : +/- 0,2%
  - Side deviation : -10/+10 %
  - Yaw angle : -90/+90°
  - Roll angle : -90/+90°
- Intensity measurement
- Cut-off measurement : 0/125 kcd or 0/200 lux
  - Accuracy : 10%
- AFS adjustment

✓ WORKSHOP MODE



✓ 4.5 m rail base included

### CAP2900 AUTOMATED

#### AUTOMATIC MEASUREMENT AND ALIGNMENT

CDD camera

Tilt compensation

S2900 software | Data transmission (ethernet)

Multilingual | Color touch screen | Linux

Connection: RJ45, USB, Wifi

1.7 m column | 5-position LED display

2 IR barriers for vehicle positioning

Wired power supply and communication (GIEGLAN)

Motion detection sensors

CAP2900EX-AF

#### TECHNICAL SPECIFICATIONS

- Angle measurement
- Cut-off measurement : from +6% to -6%
  - Accuracy : +/- 0,2%
  - Side deviation : -10/+10 %
  - Yaw angle : -90/+90°
  - Roll angle : -90/+90°
- Intensity measurement
- Cut-off measurement : 0/125 kcd or 0/200 lux
  - Accuracy : 10%
- AFS adjustment

✓ DUAL MODES : INSPECTION & WORKSHOPS

# LIGHTING EXPERTISE

**WORKSHOP® range**  
For use in all areas of the garage



## Carry out a complete and accurate lighting safety diagnosis.

- Easy implementation
- ANYWHERE® multi-zone operation
- Pre-PTI inspection
- Detailed customer report

The CAP2600 Workshop® combines Capelec's PTI/MOT expertise with features adapted to the garage market.

### WORKSHOP® FEATURES

**MULTI-ZONE**



**AFS**



**COMPLIANCE**



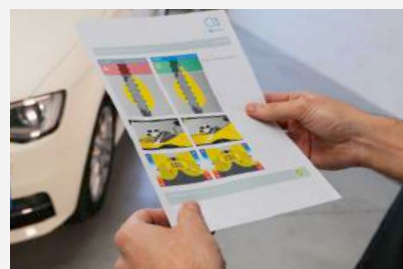
**REPORT**



ANYWHERE® system to uneven ground irregularities, for precise use anywhere in the workshop.



Advanced AFS function: enables AFS headlights to be set, calibrated and configured.



Before/After Report: detailed report on the condition of the low beam.



- ✓ Wheel base
- ✓ ANYWHERE® module

### CAP2600 WORKSHOP®

**HEADLAMPS: HALOGEN, XENON, LED, MATRIX**

- Integrated thermal printer
- Wireless communication
- Tilt compensation
- Laser alignment | Positioning assistance
- S2600 WS software

**GARAGE EXPERTISE**

- Ground compensation system
- Self commissioning
- Pre-PTI inspection | Lighting diagnostics

CAP2600WS-WIGA

**TECHNICAL SPECIFICATIONS**

- Angle measurement
- Cut-off measurement : from +6% to -6%
  - Accuracy : +/- 0,2%
  - Side deviation : -10/+10 %
  - Yaw angle : -90/+90°
  - Roll angle : -90/+90°
- Intensity measurement
- Cut-off measurement : 0/125 kcd or 0/200 lux
  - Accuracy : 10%
- AFS adjustment

✓ GARAGE MODE



## COMMON OPTIONS (EXCEPT CAP2900)

### ERGONOMY



**Set of 2 metallic LV rails**  
1,5m length | Galvanised steel

CAP2500-OPTRAIL1.5



**Reinforced metallic HGV rail**  
1,5m length | Galvanised steel  
Built-in rail

PRO03469



**Handle**  
Metal

PRO02209



**Brake set**  
Foot blocking

PRO02860



**Removable and adjustable mirror**  
Column brackets

PRO02938



**Protection cover**  
Black fabric

PRO02294

### PRINTERS



**Thermal printer | Wireless BT**  
Battery and charger

RS232 connection

CAP1000-IMPRS

Wireless connection

CAP1000-IMPBT

## CAP2600 OPTIONS

### ADD-ON



**Optional powerport and transmission**  
Coiled cable 5-8m long | RJ45 connection  
220V power supply

PRO03113



**Outdoor protection cover**  
Black fabric | Protective window  
Adjustable

PRO03177



**Inclinometer module**  
Tilt compensation

SSE01009



**Anywhere module**  
Pair | Laser pointer  
Bluetooth communication  
Ground compensation

SSE01169



# GROUND INSPECTION & WORKSHOP EQUIPMENT



LV | LV+ TEST LANE

41



HGV | MIXED TEST LANE

44



2, 3 AND 4 WHEELS  
BRAKE TESTERS

46



PLAY DETECTORS

52



DECELEROMETER

53

## MODULAR SOLUTIONS

- Universal and compact
  - All vehicle types
- Creation or replacement
  - Scalable equipment

## BRAKING | SUSPENSION | SIDE SLIP

**A complete range of equipment stand alone or combined.**

Capelec test benches can be integrated into all types of civil engineering, thanks to their compact dimensions and adaptable frames.

They can also be adapted to technical and regulatory developments via software and hardware updates, avoiding replacement costs.

## ADAPT YOUR EQUIPMENT

### FUNCTIONS

#### BRAKING



#### SUSPENSION



#### SIDE SLIP



### VEHICLES

#### LV LV+



#### HGV



#### 2 | 3 | 4 WHEELS



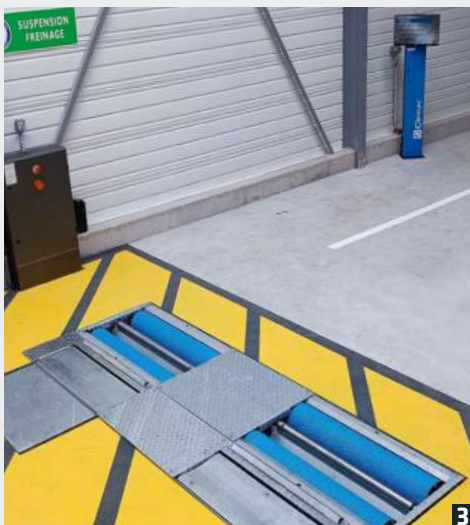
ALL BENCH COMBINATIONS PAGE 48-49



Available interfaces :

- ✓ PC interface on cabinet
- ✓ PC interface on Totem + cabinet

- 1 LV brake tester only
- 2 Mixed LV and HGV brake tester with pit
- 3 LV 3-function brake tester + touch-screen PC on Totem pole
- 4 HGV brake tester with pit + touch-screen PC on Totem pole (*optional safety kit*)



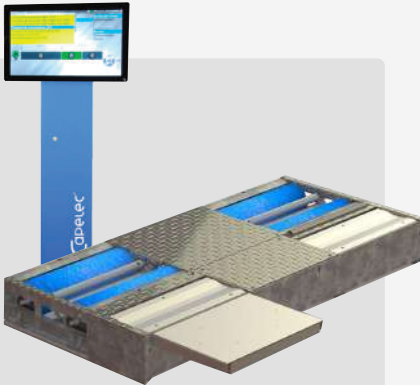


# MULTI-FUNCTION LV | LV+ TEST LANE

## BRAKING | SUSPENSION | SIDE SLIP

A device combining braking, suspension and slipping functions, and an interface.

### 3-FUNCTION UNIT



Modules :

- ✓ Brake tester
- ✓ Suspension tester
- ✓ Side slip tester
- ✓ Interface

**In case of replacement :**

Use the appropriate adapter frame.  
See civil engineering options.

### 3-FUNCTION TEST LANE

#### BRAKING | SUSPENSION | SIDE SLIP

Soft starter  
Exit assistance  
4WD mode  
3-Function Software S9010

#### INTERFACE

PC | 23" touch screen  
HF remote control



#### PC interface on Totem pole

LV	CAP9010EX-MB
LV+	CAP9020EX-MB



#### PC interface without holder

LV	CAP9010EX-SMB
----	---------------

#### BRAKE TESTER SPECIFICATIONS

- Roller speed : 5km/h
- Maximum Axle load : 4t
- Maximum load per wheel : 2t
- Maximum force :
  - CAP9010 4kW motor : 750 daN
  - CAP9020 4kW motor : 900 daN
- Three phased power supply
- Path :
  - LV : 80-220cm
  - LV+ : 80-280cm

#### DIMENSIONS

- LV : 232 x 69 x 28cm
- LV+ : 292 x 69 x 28cm

#### SUSPENSION TESTER SPECIFICATIONS

- Maximum Axle load : 4t
- Maximum load per wheel : 2t
- Three phased power supply

#### DIMENSIONS

- LV : 232 x 43 x 28cm
- LV+ : 292 x 43 x 28cm

#### SIDE SLIP TESTER SPECIFICATIONS

- Maximum load per wheel : 2t
- Deflection : +/- 20m/km

#### DIMENSIONS

- LV : 73 x 52 x 7cm
- LV+ : 85 x 52 x 7cm



# LIGHT AND EXTRA LARGE VEHICLES TEST LANE

## EQUIPMENT SETTINGS

- 1 | Select module(s): braking, suspension, slipping
- 2 | Add an interface: type of holder and screen
- 3 | Select options

### 1 | MODULES



- ✓ Braking module
- Must be associated to an Interface.

**Replacement (non CAPELEC brake tester) :**  
Use the appropriate adapter frame.  
See civil engineering add-ons.

#### BRAKE TESTER

##### Standard configuration :

Galvanised steel frame  
Aluminium rollers | Epoxy  
380V 3PH + N + EP power supply  
4kW motor

LV	CAP9010-BRA
LV+	CAP9020-BRA

##### SPECIFICATIONS

- Roller speed : 5km/h
- Maximum Axle load : 4t
- Maximum load per wheel : 2t
- Maximum force :
  - CAP9010 4kW motor : 750 daN
  - CAP9020 4kW motor : 900 daN
- Three phased power supply
- Path :
  - LV : 80-220cm
  - LARGE LV : 80-280cm

##### DIMENSIONS

- LV : 232 x 69 x 28cm
- LV+ : 292 x 69 x 28cm



- ✓ Suspension module
- Must be associated to an Interface.

#### SUSPENSION TESTER

##### Standard configuration :

Galvanised steel frame  
380V 3PH + EP power supply  
3kW motor

LV	CAP9010-SUS
LV+	CAP9020-SUS

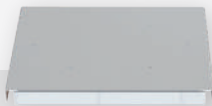
##### SPECIFICATIONS

- Maximum Axle load : 4t
- Maximum load per wheel : 2t
- Three phased power supply

##### DIMENSIONS

- LV : 232 x 43 x 28cm
- LV+ : 292 x 43 x 28cm

- ✓ Méthodes EUSAMA & Phase shift



- ✓ Slipping module
- Must be associated to an Interface.

#### SIDE SLIP TESTER

##### Standard configuration :

Galvanised steel frame

LV	CAP9010-SIS
LV+	CAP9020-SIS

##### SPECIFICATIONS

- Maximum load per wheel : 2t
- Deflection : +/- 20m/km

##### DIMENSIONS

- LV : 73 x 52 x 7cm
- LV+ : 85 x 52 x 7cm

## 2 | INTERFACE



✓ Interface

## INTERFACE

## Standard configuration :

Compact control cabinet

23" screen | Software

Qwerty keyboard, touchpad, holder

INL

## DIMENSIONS

• 370 x 810 x 440 cm

## 3 | OPTIONS

## BRAKE TESTER ADD-ONS

	REF.
XS frame	<input type="checkbox"/> XSF
Winter tires rollers	<input type="checkbox"/> WTR
Soft starter	<input type="checkbox"/> SST
Exit assistance	<input type="checkbox"/> BLO
4WD mode	<input type="checkbox"/> FWD
Pedometer	<input type="checkbox"/> PED
Covering plates	<input type="checkbox"/> COV
Weighing sensor (if no suspension module)	<input type="checkbox"/> WEI
230V 3PH + EP power supply (4kW motor only)	<input type="checkbox"/> 230

## CIVIL ENGINEERING ADD-ONS (non CAPELEC brake tester)

	REF.
MULLER civil engineering adapter (232 x 18 x 28cm)	<input type="checkbox"/> CV1
MAHA VTEQ civil engineering adapter (232 x 36 x 28cm)	<input type="checkbox"/> CV2

## SUSPENSION TESTER ADD-ONS

	REF.
230V 3PH + EP power supply (3kW motor only)	<input type="checkbox"/> 230

## INTERFACE ADD-ONS

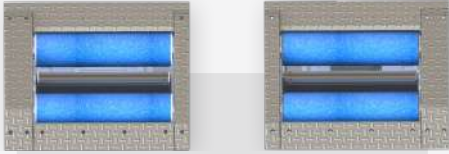
	REF.
Totem	<input type="checkbox"/> TOT
23" touchscreen	<input type="checkbox"/> 23T
27" screen	<input type="checkbox"/> 27N
27" touchscreen	<input type="checkbox"/> 27T
Azerty keyboard, touchpad, holder	<input type="checkbox"/> AZR
IR remote control	<input type="checkbox"/> RIR
HF remote control	<input type="checkbox"/> RGF
Customised software	<input type="checkbox"/> NSO

# HEAVY GOODS VEHICLES AND MIXED TEST LANE

## EQUIPMENT SETTINGS

- 1 | Select module(s): braking, suspension, slipping
- 2 | Add an interface: screen and remote control
- 3 | Select options

### 1 | MODULES



- ✓ Braking module  
Must be associated to an Interface.

#### Creation :

Use the appropriate frame.  
See civil engineering add-ons.

#### Replacement (non CAPELEC brake tester) :

Use the appropriate adapter.  
See civil engineering add-ons.

### BRAKE TESTER

#### Standard configuration :

Galvanised steel frame

230V or 400V 3PH + N + EP power supply

15kW motor

Twin-chain transmission

Steel rollers | Epoxy

Soft starter

CAP9110-BRA

#### SPECIFICATIONS

- Roller speed : 2,5km/h
- Maximum load : 18t
- Maximum force : 40 000 daN
- Motor frequency : 50-60Hz
- Path : 800-2800mm

#### DIMENSIONS

- 1350 x 800 x 570mm (x2)



- ✓ Suspension module  
Must be associated to an Interface.

### SUSPENSION TESTER

#### Standard configuration :

For Lv test lane

Painted steel frame

230V or 400V 3PH + EP power supply

3kW motor

CAP91XX-OS400V

#### SPECIFICATIONS

- Axle in test weight (Max) : 3t
- Max. load per axle : 13t
- Three phased power supply
- Motor frequency : 50-60Hz

#### DIMENSIONS

- 870 x 850 x 330mm (x2)

- ✓ Méthode EUSAMA



- ✓ Slipping module  
Must be associated to an Interface.

### SIDE SLIP TESTER

#### Standard configuration :

Painted steel frame

CAP91XX-SS

#### SPECIFICATIONS

- Maximum load per wheel : 18t
- Deflection : +/- 20m/km

#### DIMENSIONS

- 1020 x 780 x 95mm



## 2 | INTERFACE



## INTERFACE

**Standard configuration :**

Totem and electrical cabinet

23" screen PC | Software

Qwerty keyboard, touchpad, holder

INH

**DIMENSIONS**

- Height : 180 cm
- Floor area : 35 x 40 cm

## 3 | OPTIONS

**BRAKE TESTER ADD-ONS**

	REF.
Exit assistance	<input type="checkbox"/> BLO
230V 3PH + EP power supply (11kW motor only)	<input type="checkbox"/> 230V
15kW motor (motor brake, 400V 3PH + EP power supply only)	<input type="checkbox"/> 15K
Covering plates	<input type="checkbox"/> COV
Dual speed (2,5km/h   5km/h)	<input type="checkbox"/> DSP
Pressure sensor	<input type="checkbox"/> PRS

**CIVIL ENGINEERING ADD-ONS**

1 frame for civil engineering (brake tester creation without pit)	<input type="checkbox"/> 1FCV
2 frames for civil engineering (brake tester creation with pit)	<input type="checkbox"/> 2FCV
MAHA VTEQ civil engineering adapter (brake tester replacement)	<input type="checkbox"/> CV1
MULLER civil engineering adapter (brake tester replacement)	<input type="checkbox"/> CV2
Load simulator	<input type="checkbox"/> CAP91XX-SDC

**SECURITY OPTIONS**

Side barrier	<input type="checkbox"/> SIB
Warning light for barrier	<input type="checkbox"/> WLB
Self-closing gate	<input type="checkbox"/> SCG
Safety set (required with options below)	<input type="checkbox"/> SEC
Optical barrier for pit	<input type="checkbox"/> OPB
Secure remote control with emergency stop	<input type="checkbox"/> SRC

**SUSPENSION TESTER ADD-ONS**

230V 3PH + EP power supply (3kW motor only)	<input type="checkbox"/> 230
---	------------------------------

**INTERFACE ADD-ONS**

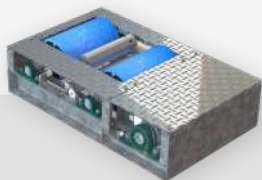
23" touchscreen	<input type="checkbox"/> 23T
27" screen	<input type="checkbox"/> 27N
27" touchscreen	<input type="checkbox"/> 27T
4 screens repeater	<input type="checkbox"/> 4SR
HF remote control	<input type="checkbox"/> RGF
Totem alone	<input type="checkbox"/> TOT
Azerty keyboard, touchpad, holder	<input type="checkbox"/> AZR
Customised software	<input type="checkbox"/> NSO

## 2, 3 AND 4 WHEELS BRAKE TESTERS

### EQUIPMENT SETTINGS

- 1 | Select a module : one or more wheels
- 2 | Add an interface: screen and remote control
- 3 | Select options

### 1 | MODULES



✓ Braking module  
Must be associated to an Interface.

#### MOTORBIKES BRAKE TESTER

##### Standard configuration :

Galvanised steel frame

Aluminium rollers | Epoxy

380V 3PH + N + EP power supply

2,2kW motor

Exit assistance

Weighing sensor

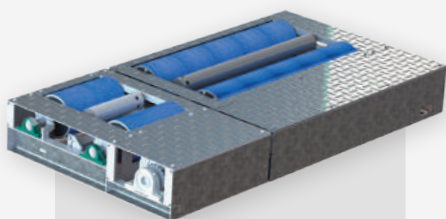
CAP9410-BRA

##### SPECIFICATIONS

- Roller speed : 5km/h
- Maximum load : 1t
- Maximum force : 300 daN

##### DIMENSIONS

- 102 x 62 x 26cm



✓ Braking module  
Must be associated to an Interface.

#### MOTORBIKES, TRICYCLES AND QUADS BRAKE TESTER

##### Standard configuration :

Galvanised steel frame

Aluminium rollers | Epoxy

Alimentation électrique 400V 3PH + N + EP

2 x 2,2kW motor

Exit assistance

Weighing sensor

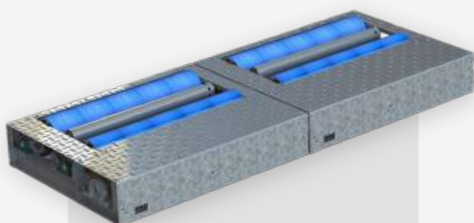
CAP9420-BRA

##### SPECIFICATIONS

- Roller speed : 5km/h
- Max. load per axle : 2t
- Maximum force : 300 daN per wheel

##### DIMENSIONS

- 2 wheels module : 102 x 62 x 26cm
- 3 wheels module : 102 x 126 x 26cm



✓ Braking module  
Must be associated to an Interface.

#### MOTORBIKES, TRICYCLES, QUADS AND LIGHT VEHICLES BRAKE TESTER

##### Standard configuration :

Galvanised steel frame

Aluminium rollers | Epoxy

400V 3PH + N + EP power supply

2 x 2,2kW motor

Exit assistance

Weighing sensor

CAP9430-BRA

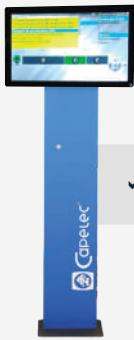
##### SPECIFICATIONS

- Roller speed : 5km/h
- Max. load per axle : 2t
- Maximum force : 300 daN per wheel

##### DIMENSIONS

- 3 wheels module : 102 x 126 x 26cm (x2)

## 2 | INTERFACE



✓ Interface

## INTERFACE

## Standard configuration :

23' screen PC | Software

Qwerty keyboard, touchpad, holder

INM

## DIMENSIONS

• 370 x 810 x 440 cm

## 3 | OPTIONS

## BRAKE TESTER ADD-ONS

	REF.
3,7kW motor for light vehicles	<input type="checkbox"/> 03K
230V 3PH + EP power supply	<input type="checkbox"/> 230V
Pedometer	<input type="checkbox"/> PED
Manometer	<input type="checkbox"/> MANO
Clamp and command	<input type="checkbox"/> CC

## SECURITY OPTIONS

Side barrier	<input type="checkbox"/> SIB
Warning light for barrier	<input type="checkbox"/> WLB
Optical emergency stop for rollers	<input type="checkbox"/> ORS

## INTERFACE ADD-ONS

23' touchscreen	<input type="checkbox"/> 23T
27' screen	<input type="checkbox"/> 27N
27' touchscreen	<input type="checkbox"/> 27T
Azerty keyboard, touchpad, holder	<input type="checkbox"/> AZR
HF remote control	<input type="checkbox"/> RGF
Customised software	<input type="checkbox"/> NSO

## LV LV+ OPTIONS



### Cover plates

Two wheels technical inspection adaptor  
Steel

For CAP9010 LV series

PRO04092

For CAP9020 LV+ series

PRO04068



### Pedometer

Foot-pedal sensor  
Wireless BT connection  
CAP90x0 brake testers series

CAP9520



### Free rollers set

2 sets of 5 rollers  
Transport handle | Aluminium frame

CAP9000-RF



### HF remote control

USB | HF receiver  
Compatible with software for S9000 & S9600 series

CAP1000-RCHF-USB



### IR remote control

USB | infrared receiver  
Compatible with software for S9000 & S9600 series

CAP1000-RCIR-USB

## HGV OPTIONS



### Load simulator

Push 18T | Remote control and receiver  
Set of hoses | Galvanized steel cradles x2  
Hydraulic power unit | 380 V

CAP91XX-SDC



### Pressure sensors

Pneumatic system pressure measurement  
Sensors and communication module

CAP01319



### Free rollers

2 sets of 3 rollers  
Maximum load : 16 t  
Protective cover

CAP9682



### Cover plate

Set of 4  
Steel

PRO04016



### PC keyboard support

PRO03029



### Repeater Totem

Column + 27" screen  
Height 1.80m

CAP91XX-OTRL



### Video platform checking ground connections

Two cameras | Two LED strips  
S9230 software | Protective plate  
Touch screen

CAP9230





**Remote control with emergency stop**  
Charging base  
Secure 433-434 MHz transmission  
64 channels

CAP91XX-SAU



**Column for repeater screen**  
Column only  
Height 2.40m  
For 22"-27" screen

PRO04288



**Wall mount for screen**  
Max. load 25kg

PRO04176

## INTERFACE OPTIONS



**Printer and storage cabinet**  
A4 laser printer | USB port

SSE01220



**Storage cabinet**  
A4 printer cabinet | 2 shelves  
Size 500 x 500 x 920

PRO04008



**Printer**  
Inkjet printer | A4 size

PRO03790



**PC screen protective cover**  
Polyester fabrics | Black

PRO02686



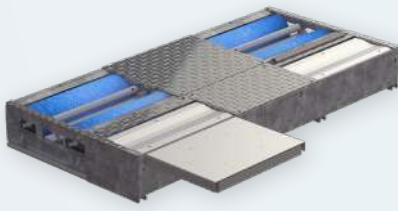
**Repeater screen**  
Extra 22" display screen

CAP00941

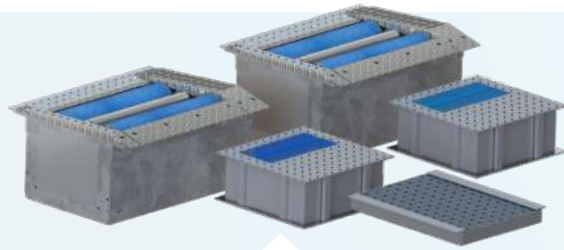
# TEST LANES COMBINATIONS

## SCALABLE EQUIPMENT

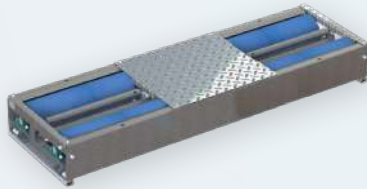
Test lanes can be combined to control a wide range of vehicles on the same line.



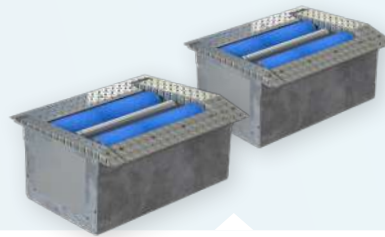
**CAP9010 - CAP9020**  
**BRAKE SUSPENSION SIDE SLIP TESTER**  
For light and extra large vehicles.



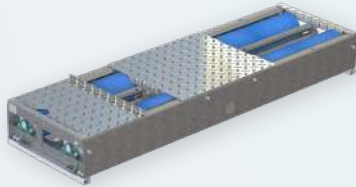
**CAP9110**  
**BRAKE SUSPENSION SIDE SLIP TESTER**  
For heavy goods vehicles.



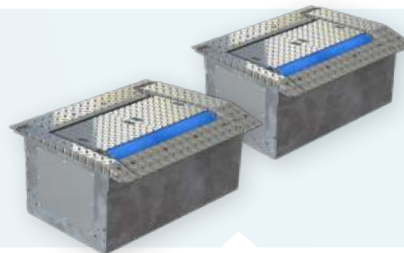
**CAP9010 - CAP9020**  
**BRAKE TESTER**  
For light and extra large vehicles.



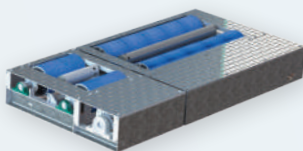
**CAP9110**  
**BRAKE TESTER**  
For heavy goods vehicles.



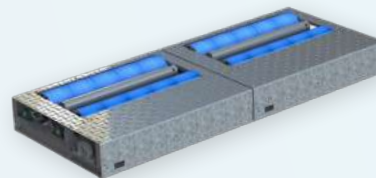
**CAPxxx**  
**BRAKE TESTER WITH PLATES**  
For light vehicles and 2 wheelers.



**CAPxxx**  
**BRAKE TESTER WITH PLATES**  
For heavy goods vehicles and 2 wheelers.

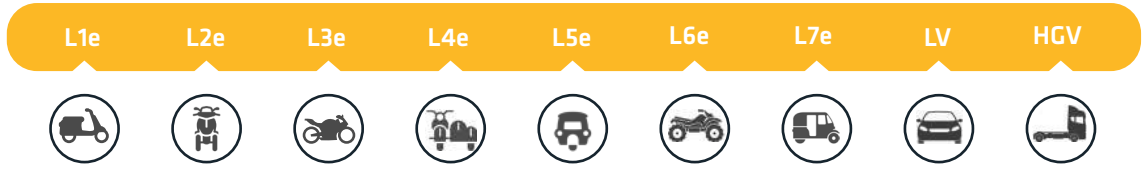


**CAP9420**  
**BRAKE TESTER**  
For motorcycles, tricycles and quads.



**CAP9430**  
**BRAKE TESTER**  
For motorcycles, tricycles, quads and light Vehicles.

## VEHICLE CATEGORIES



CAP010 CAP9020

								✓	
--	--	--	--	--	--	--	--	---	--



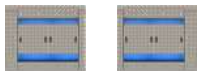
CAPxxx

✓		✓						✓	
---	--	---	--	--	--	--	--	---	--



CAP9110

									✓
--	--	--	--	--	--	--	--	--	---



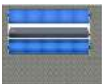
CAPxxx

								✓	✓
--	--	--	--	--	--	--	--	---	---



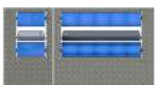
CAP9410

✓		✓							
---	--	---	--	--	--	--	--	--	--



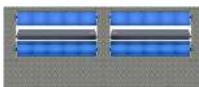
CAP9xxx

✓	✓	✓	✓	✓					
---	---	---	---	---	--	--	--	--	--



CAP9420

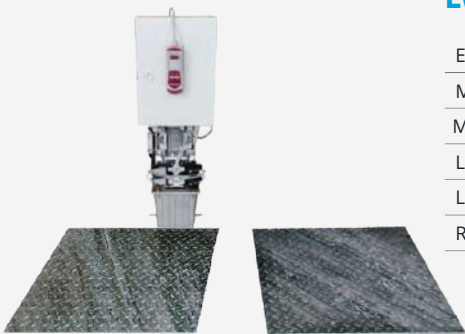
✓	✓	✓	✓	✓	✓	✓			
---	---	---	---	---	---	---	--	--	--



CAP9430

✓	✓	✓	✓	✓	✓	✓	✓		
---	---	---	---	---	---	---	---	--	--

## LV LV+ PLAY DETECTORS



### LV LV+ PLAY DETECTOR

Electro-hydraulic operation

Maximum axle load/wheel load: 3 tons / 1,5 tons

Maximum working pressure: 175 bar

Longitudinal/transversal force: 8 kN

Longitudinal/transversal movement: 50 mm

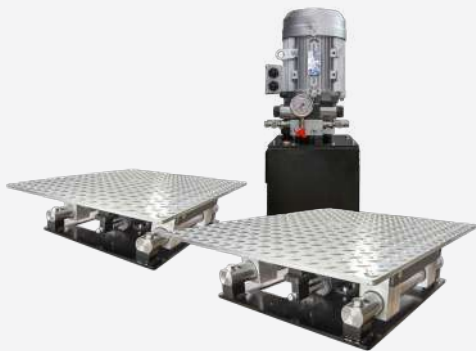
Remote control

Play detector (400V Tri)	CAP9200-LEH
Play detector (230V Tri)	CAP9201-LEH
Set of hoses	PRO03504
Frame	PRO02799

#### SPECIFICATIONS

- Movement speed: 60 mm/sec
- Cable length: 6,5 m
- Dimensions platform SM: 740 x 580 x 60 mm
- Dimensions platform FM: 690 x 700 x 60 mm
- Motor: 1,5 kW, 3PH+N+E 400V / 50Hz / 16A slow

## HGV PLAY DETECTORS



### HGV PLAY DETECTOR

Compatible with existing civil engineering

Compact frame or replacement adapter

Electro-hydraulic operation

Maximum load per wheel : 10 tons (passage)

Flush to the slab galvanneated steel plates

Wireless remote control

#### COMPLETE SET :

- ✓ CAP9210 module
- ✓ PRO04371 creation frame
- ✓ PRO04395 set of hoses
- ✓ Wireless remote control

Complete set	CAP9210-F
Play detector module	CAP9210
Creation frame	PRO04371
Set of hoses	PRO04395

#### SPECIFICATIONS

- Power supply 400V
- Plate dimensions : 800 x 690 mm
- Frame dimensions : 212 x 550 x 600 mm
- Force per plate : 30 KN
- Movements : Longitudinal | Transversal | Diagonal
- Cylinder stroke : 100 mm
- Displacement speed : 70 mm/second
- Remote control: Wireless with LED light
- Motor : 5,5 kW, 3 phases +N +Earth 400v/50hz
- Coating : Hot dipped galvanized steel



# DECELEROMETER



## DECELEROMETER

Brake force tester

RS232 and wireless ports | LCD screen

PC report

S9500 software

### COMPLETE SET

- ✓ CAP9500 module
- ✓ Suction pad
- ✓ Protective storage case
- ✓ Cables
- ✓ PC report

Module alone	CAP9500EX-E
Complete set	CAP9500EX-B

### SPECIFICATIONS

- 3D sensor
- LCD screen
- S9500 software

## OPTIONS

### COMMUNICATION



**Thermal printer | Wireless BT**  
Battery and charger

RS232 connection

CAP1000-IMPRS

Wireless Bluetooth connection

CAP1000-IMPBT

### ERGONOMY



**Manometer**  
Hand pressure gauge

CAP9500A-CFM



**Pedometer**  
Foot-pedal pressure gauge

CAP9500A-CFP



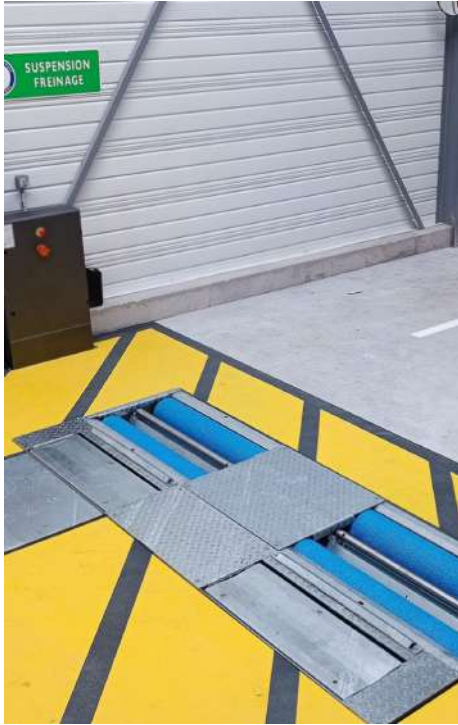
**Bus door pressure**  
Bus door pressure gauge

CAP9500A-CFPA



**Universal crowbar**  
Motorbike  
Fitting for handlebars

SSE01044



# OTHER TESTERS



## SONOMETER

### DIGITAL SOUND LEVEL METER WITH CALIBRATOR

LCD color display | Class 2

USB connection

Power supply or battery

Spectrum analyzer

CAP5700EX-SC



## NOISE MEASURING SYSTEM

### SOUND LEVEL METER | CALIBRATOR | ACCESSORIES

Remote microphone | LCD color display | Class 2

USB connection

Power supply or battery | Spectrum analyzer

Tripod for microphone positioning

### COMPLETE SET:

- ✓ Sonometer
- ✓ Calibrator
- ✓ Positioning tripod
- ✓ 5m extension cable
- ✓ Magnetic mounting for totem pole

CAP5700EX-SCA



## SPEED-MEASURING SYSTEM

### ROLLER SPEED TESTER | L-CATEGORY VEHICLES

Transportable | Built-in

Access and exit ramps

10" tablet | Win Os

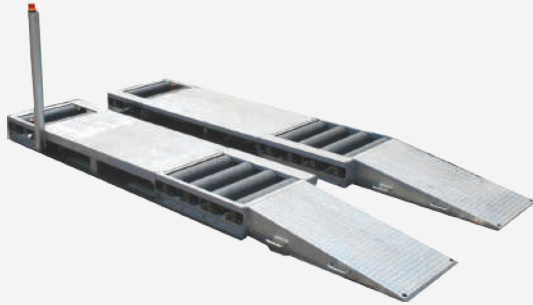
Adjustable safety shoe | Refocusing rollers

Frame-mounted control knob

S9610 software | User-friendly interface

Optional footrest

CAP9610FR-T



### TAXIMETER TEST BENCH

CAP9650 series

Inspection of taximeters

Light vehicle compatibility

Easy access rollers | S9650 software

12 rolls mechanism

Light operation indicator

Metallic frame | Tablet | Wireless controller

Compatible with ESP, ASR, VSA, VSC, ESC systems

CAP9650-CTL



### TINT GLASS METER

CAP5600 series

Measurement of the tint of the glass

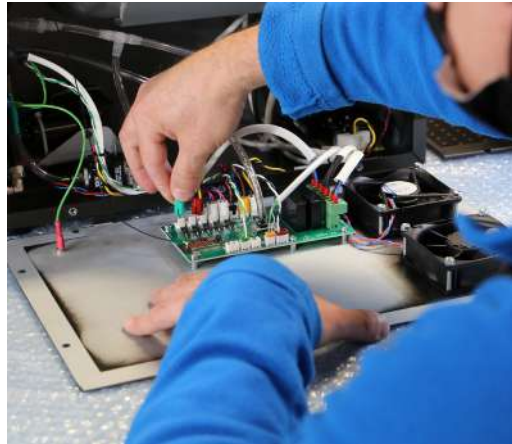
Light transmittance and light reflectance tester

Long lasting battery | Suction pad

LCD display | Case

CAP5600





# General Terms Conditions of Sale

## Prices

- All prices are net in EUR. The prices applied are those published in the International Price List valid on the date of invoicing. Prices are exclusive of any applicable sales tax, value added tax or assimilated taxes, fees, import duties or other duties, insurance, transport and handling charges.

## Payment

- Payment terms shall be discussed between CAPELEC and its customer at the moment of the offer writing. Invoices not paid within the due date shall thereafter bear overdue charges at the rate of 2% per month on the unpaid balance until paid in full. If in CAPELEC's opinion the purchaser's financial situation does not justify performance, production or shipment on the terms of payment specified, CAPELEC may require full or partial payment in advance before shipment. CAPELEC may discontinue or delay continuance of performance or production if the purchaser fails to pay any moneys due. - If an unpaid amount is deemed uncollectable and transferred to a third party for the purpose of collection, any fees incurred are the responsibility of the purchaser and must be paid in full to CAPELEC or its assigned agent.

- The amount of any present or future taxes applicable to the sale of products or services shall be added to the price and be paid by the purchaser unless the purchaser provides CAPELEC with a valid exemption certificate acceptable to CAPELEC and the appropriate tax authority.

## Title to Goods and Risk of Loss

- All prices are ex works (EXW Montpelier, France; ICC INCOTERM 2000) unless otherwise agreed in writing. Title and risk of loss for all products shall pass to the purchaser upon delivery by CAPELEC to a freight forwarder or purchaser's designate, regardless of shipping terms, method of payment or transport cost.

## Transit Damage Claims

- Ex works is our term of sale. Therefore, once the goods have been loaded for shipping, they become the responsibility of the purchaser.

- It is the responsibility of the purchaser to receive the entire shipment as tendere-

red and file a claim with the carrier if the shipment or any part thereof is missing or damaged upon delivery. If there is any loss or damage at the time of delivery, it is essential to make the appropriate statement on the delivery receipt.

- Prompt inspection is of essence. Any concealed damage should be reported to the delivering carrier within 15 days of receipt of the shipment. Prompt filing of the claim with all necessary documents is required for fast settlement. All claims must be accompanied by the following documents:

- Original paid freight bill - Certified copy of original bill of lading - Duplicate of invoice covering shipment - Duplicate of destination inspection report - Duplicate of delivery receipt noting shortage or damage.

## Acceptance

- Goods and services offered or quoted for are subject to availability. Orders are subject to acceptance by CAPELEC.

## Cancellation

- Modifications and add-ons to orders can only be accepted within the next working day after the original time of order placement. Thereafter add-ons will be considered as new orders. Orders cannot be cancelled by the purchaser except upon terms that will fully compensate CAPELEC against loss or by CAPELEC's prior written agreement.

## Returns

- Any products sold by CAPELEC may be returned only in accordance with the warranty provisions applicable to the product concerned. Before returning any product for whatever reason, the purchaser must obtain CAPELEC's prior written approval and instructions. Return and external fees are at the purchaser's expenses.

## Force Majeure

- CAPELEC shall not be liable for any loss, damage, delay, changes in shipment schedules or failure to deliver caused by accident, fire, earthquake, flood, meteorological exigency, animal or human disease, strike, lock-out, labour disputes, industrial action, riot, hooliganism, civil commotion, insurrection, revolution, terrorist acts, war whether declared or not, the elements, natural catastrophe, boycott, embargo, mutiny, failure of carriers, unavailability of transport facilities, exchange rates, fuel prices, power failures, government requi-

rements or prohibitions, import or export restrictions, law enforcement, computer virus, software failure, acts of God or public enemy, prior orders from customers or limitations of CAPELEC, its suppliers' or its subcontractors' production, marketing activities or services, or any other causes or contingencies beyond CAPELEC's control. CAPELEC shall in no event be liable for direct, indirect, ordinary or extraordinary, special, incidental damages or consequential loss including without limitation lost profits or loss of use or production or capital, whether based on contract, tort or any other legal theory.

## Liability

- CAPELEC shall in no event be liable for direct, indirect, ordinary or extraordinary, special, incidental damages or consequential loss including without limitation lost profits or loss of use or production or capital, whether based on contract, tort or any other legal theory. The remedies of the purchaser set forth herein are exclusive and the liability of CAPELEC with respect to any contract, or anything done in connection therewith such as the performance of breach hereof, or from the manufacture, sale, delivery, resale, installation or use of any products whether arising out to contract, negligence, strict tort, or under any warranty or otherwise, shall not exceed the purchase price of the products upon which liability is based.

## Severability

- Each portion and provision of the present terms is severable and if any provision is held invalid or unenforceable the remainder shall nevertheless remain valid and in full force and effect.

## Unique ecosystem identifier

The key identifier FR002721\_05KUZN attesting to the registration in EEE sector producers, in application of article L.541-10-13 of the Environment Code, has been attributed by ADEME to CAPELEC (381 622 976 00037). This identifier attests to its compliance with its obligation to record in the register of Electrical and Electronic Equipment producers and the completion of its marketing declarations to ecosystem.

## Jurisdiction

- All sales, agreements and contracts shall be governed by and construed in accordance with the laws of France.





 **FRANCE**

Capelec SAS  
1130 rue des Marels Parc Euréka  
34000 Montpellier FRANCE  
+33 (0)4 67 156 156  
contact@capelec.com

 **GERMANY**

Capelec Deutschland GmbH  
Gewerbestraße 8  
87787 Wolfertschwenden GERMANY  
(+49) 08334/98 95 323  
capelec.deutschland@capelec.de

 **INDIA**

Capelec India PVT. Ltd.  
Mez & 1st Floor, A-83,  
Okhla Industrial Area, Ph-II,  
New Delhi - 110020 INDIA  
+91-9654117338  
capelec.india@capelec.com

 **FINLAND**

Pegasor Oy  
Hatanpään valtatie 34 C  
33100 Tampere FINLAND  
www.pegasor.fi

 [www.capelec.com](http://www.capelec.com)

