



# Premium Coldmix Asphalt



## Good Day Colleagues

I would like to present to you a **World-Class Cold Mix Asphalt Product** that **WE** are sure will cover your **Pothole, Tar Paving & Road Resurfacing** needs. This product has, **CONSISTENTLY**, proven to be excellent for the following:

- **Pothole Repair & Sealing**
- **Road Resurfacing & Re-Patching**
- **Driveway & Complete Residential & Commercial Yard Paving**

The product is **D.I.Y** friendly, easy to install, fast setting & easily stored with a **12 MONTH SHELF-LIFE**.

Our product is **WORLD** renowned with clients stretching from **South Africa** & into other **African** countries, **North America, Europe & Asia**. We pride ourselves in the manufacturing & distribution of a world-class product making it the most affordable, effective & efficient **Pothole Repair Cold Mix Asphalt** on the market.

## PURPOSE OF PROPOSAL

- Introducing **Carbon Asphalt Coldmix & OUR Mission, Vision & Goals**.
- **Pothole Technology & Education:**
  - What causes a pothole
  - Post Sales & Installation
- **Long-Term Positive Social Impact**
  - Skills Training & Empowerment of young individuals
  - **Carbon Asphalt Coldmix Education/Bursary Fund**
- **Private sector partnerships in addressing pothole challenges**
- **Business to business empowerment & outsourcing.**

## TARGETS

- Establish **Carbon Asphalt Coldmix** as the preferred **Coldmix Asphalt** product for **National & Provincial Government Projects Across All Departments**.
- Setup a **Carbon Asphalt Coldmix** factory & employ local individuals from under developed communities.



- Make sure the product is easily accessible to the public by negotiating product listing & reseller agreements with as many multinational & independent hardware stores & dropshipment platforms as possible.
- Pro-Actively Assist With Eradication Of:
  - High Levels Of Youth Unemployment
  - Accident Causing Potholes & Un-Resurfaced Roads.
  - Recurring Pothole Damage To Busy Roadways

## OUR COMMITMENT

We commit ourselves to be fully available to facilitate & oversee the availability of **Carbon Asphalt Coldmix** material for purposes of demonstration & training. We assure everyone involved that the goal of “**MAKING ROADS GREAT AGAIN**” is one we are proud to assist in achieving.

To achieve this goal, we have successfully secured a supplier agreement with a multinational hardware retailer that has listed our product as a line item & we are working tirelessly to get onto other retailers listing & also secure drop-shipment spot on popular platforms. This will enable the general public to be able to access our product without any barriers or red tape.

Should you have any queries, suggestions or recommendations please contact us on the details listed below.

## BUSINESS REGARDS

**ANDISANI MKHWANAZI (DIRECTOR at ISILOSEZWE INVESTMENTS)**

**CELL:** 0624940499

**EMAIL:** [isilosezwe.investments@gmail.com](mailto:isilosezwe.investments@gmail.com)/[carbonasphalt@gmail.com](mailto:carbonasphalt@gmail.com)

**CONTACTS**  
C: 0624940499  
E: [isilosezwe.investments@gmail.com](mailto:isilosezwe.investments@gmail.com)  
A: 11 Ingogo Ave  
Ncandu Park  
Newcastle  
2940





*Premium Coldmix Asphalt*

OUR **PREMIUM COLDMIX ASPHALT** STANDS AS A TESTAMENT TO UNPARALLELED **QUALITY & DURABILITY**. MAKING IT THE **BEST** CHOICE FOR:

**ROAD RE-SURFACING/RE-PATCHING & POTHOLE REPAIR.**  
D.I.Y FRIENDLY. **EASY APPLICATION.** FAST SETTING.  
**12 MONTH STORAGE SHELF-LIFE.**

**RESELLERS WELCOME!**

*For Quotes & Orders*



**carbonasphalt@gmail.com**  
**0624940499**

**R85**  
\*INCLUDING DELIVERY



SCAN QR CODE  
PLACE ORDERS  
WE DELIVER



ME DEPILEK  
BFACE ORDER2  
SCAN QR CODE



OUR **PREMIUM COLDMIX ASPHALT** STANDS AS A TESTAMENT TO UNPARALLELED **QUALITY & DURABILITY**. MAKING IT THE **BEST** CHOICE FOR:

**ROAD RE-SURFACING/RE-PATCHING & POTHOLE REPAIR.**  
D.I.Y FRIENDLY. **EASY APPLICATION**. FAST SETTING.  
**12 MONTH STORAGE SHELF-LIFE.**

**RESELLERS WELCOME!**  
*For Quotes & Orders*

**carbonasphalt@gmail.com**  
**0624940499**

**FOR QUOTATIONS & ORDERS CALL OR WHATSAPP 0624940499**

**ONLINE MEDIA LINKS:**

- **CARBON ASPHALT BOOKLET:** <https://heyzine.com/flip-book/aabe34ed2f.html>
- **CARBON ASPHALT PROMOTIONAL VIDEOS:** [https://drive.google.com/drive/folders/1Y2HlxyWyF5bW\\_cZAxfMVtyxQJgCyyQLd?usp=sharing](https://drive.google.com/drive/folders/1Y2HlxyWyF5bW_cZAxfMVtyxQJgCyyQLd?usp=sharing)



# Premium Coldmix Asphalt



SCAN QR CODE  
PLACE ORDERS  
WE DELIVER



# Premium Coldmix Asphalt



Local & National Government

For Quotes & Orders



[carbonasphalt@gmail.com](mailto:carbonasphalt@gmail.com)  
0624940499



SCAN QR CODE  
PLACE ORDERS  
WE DELIVER



**R85**  
PER 25KG BAG

# Premium Coldmix Asphalt



*International Projects & Clients*

*For Quotes & Orders*

**carbonasphalt@gmail.com**  
**0624940499**



**SCAN QR CODE**  
**PLACE ORDERS**  
**WE DELIVER**



**R85**  
**PER 25KG BAG**

# Premium Coldmix Asphalt



## Potholes & Road Resurfacing

For Quotes & Orders

[carbonasphalt@gmail.com](mailto:carbonasphalt@gmail.com)  
**0624940499**



SCAN QR CODE  
PLACE ORDERS  
WE DELIVER



# Premium Coldmix Asphalt



OUR **PREMIUM COLDMIX ASPHALT** STANDS AS A TESTAMENT TO UNPARALLELED **QUALITY & DURABILITY.**

MAKING IT THE **BEST** CHOICE FOR:

**ROAD RE-SURFACING/RE-PATCHING & POTHOLE REPAIR.**

D.I.Y FRIENDLY. **EASY APPLICATION.** FAST SETTING.

**12 MONTH STORAGE SHELF-LIFE.**

**RESELLERS WELCOME!**

*For Quotes & Orders*

**carbonasphalt@gmail.com**  
**0624940499**



**SCAN QR CODE**  
**PLACE ORDERS**  
**WE DELIVER**



**R85**  
**PER 25KG BAG**



**Carboncor Distribution South Africa (Pty) Ltd**

**Vat no : 4320279369**

**2017/171620/07**

**16 Nuwejaarsvoel,**

**Birch Acres, Kempton Park,**

**Johannesburg,**

**South Africa**

23 October 2024

Phone +27 11 452-0377

Fax +27 11 452-9683

**RE: Supply and Delivery of Cold Mix Asphalt in 25kg to Isilosezwe Investments CC**

**This letter serves to confirm that Carboncor Distribution South Africa (Pty) Ltd is a manufacturer of Cold Mix Asphalt with a production capacity of 60 000 x 25kg bags per month.**

**Carboncor Distribution South Africa (Pty) Ltd, agrees to supply Isilosezwe Investments CC at an agreed price so that they may distribute within South Africa to the following:**

- 1. Municipality, District and Provincial Tenders and RFQ's within the Province of Kwa Zulu Natal.**
- 2. Kwa Zulu Natal Department of Transport.**
- 3. Contractors**
- 4. Retail Outlets**

Yours Sincerely

A handwritten signature in black ink, appearing to read 'Conrad Cullinan', is written over a horizontal line.

Conrad Cullinan

Director

Carboncor Distribution South Africa (Pty) Ltd

**CARBONCOR DISTRIBUTION  
SOUTH AFRICA (PTY) LTD**

**Registration No: 2017/171620/07**

**Tax No: 9754798164**

## Revolutionising the way roads are built

### Environmentally Friendly Cold Asphalt Premix

For use in repair and maintenance, re-surfacing and new road surfacing.



### ENVIRONMENT FRIENDLY

Our pioneering technology is highly environment friendly, crucially important in today's list of global priorities.

Our unique environmentally conscious asphalt contains no harmful substances or emissions.

Being a cold application and the lack thereof of harmful emissions lends its self to user friendly attributes and increased labour productivity without health issues.

### OVERVIEW



The Carboncor Technology utilises key aggregates, together with a specially, formulated concentrate mixture, which is then used to develop the various products within the Carboncor range. Under the guidance of a team of professional engineers,

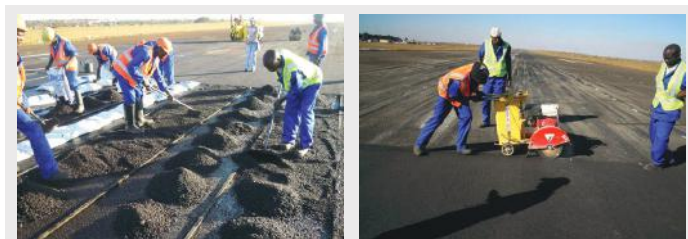
these products were progressively refined to meet the standards laid down by the International Road Construction and Paving Industry.

The products unique nature allows it to be laid with ease using either labour or machinery in the form of pavers.

Due to its 12 month shelf life and robust packaging, material is easily transported and stored. We regularly transport material in containers to extreme destinations around the world where hot asphalt is difficult to come by and when is available its quality is often compromised.

### ROAD SURFACING

Carboncor Cold Asphalt Premix is used for new skid resistant road surfaces, or more heavy-duty resurfacing on existing asphalt, concrete and dirt roads. Carboncor Cold Asphalt Premix may be applied by labour intensive methods or through the use of conventional pavers.



### TECHNICAL CHARACTERISTICS

- > Does not require heat in its application. Therefore, there is no time limit between production and application.

Conventional premix has a three to four hour period in which to apply before cooling.

- > A conventional primer or tack coat before application is not necessary for low specification roads, however can be used where the engineer requires it where high specification roads are concerned.
- > Water is used as a primer.
- > There is no lateral movement.
- > Does not bleed in hot weather.
- > Is not sensitive to climatic conditions; successful installations were carried out at temperatures well below freezing as well as temperatures above 50 degrees Celsius.
- > The road is open to light traffic immediately after compaction, but for higher traffic flow and heavier loads, or at intersections open to traffic after 4 - 8 hours, depending on weather or wetness of mix.
- > Fine grade mix can be applied at a minimum compacted thickness of 10mm.
- > The product is non-hazardous and environmentally friendly.



### REPAIR AND MAINTENANCE

Carboncor Cold Asphalt Premix is used for the repair of potholes, new skid resistant road surfaces, or more heavy-duty resurfacing on existing asphalt, concrete and dirt roads.

## Revolutionising the way roads are built

**Environmentally Friendly Cold Asphalt Premix**

For use in repair and maintenance, re-surfacing and new road surfacing.



### PROCEDURES FOR REPAIRING POTHOLES

- 1 Square off pothole
- 2 Clean hole and fill with in situ soil
- 3 Compact base well and sweep clear of debris
- 4 Slightly wet base and edges of pothole
- 5 Add Carboncor Cold Asphalt Premix, shape the pothole square
- 6 Slightly wet surface of material
- 7 Compact by hand or machine  
(For detailed explanation please see web page)

### NOTE: NO HEAT & NO SOLVENTS

| Coverage  | Compaction             | Yield per ton<br><small>on a reasonably flat base</small> |
|---|------------------------|---|
| Surfacing of National Roads   | 40mm compacted to 30mm | 17m <sup>2</sup> @30mm                                    |
| Surfacing of Primary roads  | 30mm compacted to 20mm | 24m <sup>2</sup> @20mm                                    |
| Surfacing of Secondary roads, rural roads, farm roads or car parks            | 20mm compacted to 15mm | 34m <sup>2</sup> @15mm                                    |
| Resurfacing of driveways and minor existing roads, very light and low traffic | 15mm compacted to 10mm | 50m <sup>2</sup> @10mm                                    |

### TECHNOLOGY

Our focus is the research, development, manufacturing and marketing of environment conscious, cold asphalt to the road surfacing industry, one which retains its focus on labour intensive methodology but is versatile enough to be used by heavy equipment for larger projects.

With a firm focus on an innovative product line and technological modernisation, Carboncor endeavours to be the lead player in its sector.



With zero heat required in both the manufacturing and application process, as well as not having to add chemical solvents to our mix, Carboncor goes a long way to reducing a country's carbon footprint.

Being a water based material gives fluidity to the mixture and allows for ease of application and compaction, including its ability to pass through a paver in all weather conditions.

Our technology is not only used for the repair of potholes and utility cuts but is designed for use in resurfacing existing asphalt or concrete surfaces, surfacing driveways as well as surfacing new roads with low or high traffic volume. Our experience extends from the dense traffic associated with massive metropolises such as Mumbai in India to the low volume traffic of outlying rural areas in Africa.

Our graded aggregates are the highest quality available for surfacing material in the area of concern. Ensuring the longevity of the material laid is not compromised and the asphalt achieves its full and expected life span.

The unique characteristics of the Carboncor material is that it is designed to be used in all weather conditions whether it be hot, humid, wet or cold. The consistency of the asphalt is not compromised by the local weather conditions.

Carboncor technology is versatile enough to allow for the design mix to be adjusted meeting the desired specifications as required by our clients.





Revolutionising the way roads are built

**Environmentally Friendly Cold Asphalt Premix**

For use in repair and maintenance, re-surfacing and new road surfacing



## PROCEDURES FOR REPAIRING POTHOLES

### Standard Operating Procedure (S.O.P) - HAND STAMPER

- 1 Remove all loose stones and debris by sweeping the pothole with industrial broom.

Carboncor Asphalt may be used to fill the entire hole by applying it at a maximum depth of

- 2 30 mm compacted per layer. If the pothole is less than 30mm, fill pothole with 1 layer of Carboncor. If pothole is more than 30mm deep, 2 or more layers of Carboncor should be applied and compacted for maximum strength and compaction. No water to be added between Carboncor compacted layers.

- 3 Slightly dampen surface and edges of pothole including the surrounding asphalt area with clean water using a watering can.

- 4 Empty contents of Carboncor material into the pothole and spread evenly with a rake. Allow for about 15mm of material to overlap edges of pothole and a thickness of 10 mm above the surface of the surrounding road to allow for compaction.

- 5 Sprinkle with a little water using a watering can. Amount of water should be just enough to activate the emulsion. (See Photos Below)

- 6 Place an empty bag over the material and compact it using the Hand Stamper with force. Pay more attention to the edges and additional water can be added there to have a better seal after compaction.



1



3



4



4



5



6



Revolutionising the way roads are built

**Environmentally Friendly Cold Asphalt Premix**

For use in repair and maintenance, re-surfacing and new road surfacing



## PROCEDURES FOR REPAIRING POTHOLES

### Standard Operating Procedure (S.O.P) - PLATE COMPACTOR

- 1 Remove all loose stones and debris by sweeping the pothole with industrial broom.

Carboncor Asphalt may be used to fill the entire hole by applying it at a maximum depth of

- 2 30 mm compacted per layer. If the pothole is less than 30mm, fill pothole with 1 layer of Carboncor. If pothole is more than 30mm deep, 2 or more layers of Carboncor should be applied and compacted for maximum strength and compaction. No water to be added between Carboncor compacted layers.

- 3 Slightly dampen surface and edges of pothole including the surrounding asphalt area with clean water using a watering can.

- 4 Empty contents of Carboncor material into the pothole and spread evenly with a rake. Allow for about 15mm of material to overlap edges of pothole and a thickness of 10 mm above the surface of the surrounding road to allow for compaction.

- 5 Using the plate compactor, compact the material dry without adding any water. In order to avoid over compaction, two passes should be sufficient.

- 6 Sprinkle with a little water on Carboncor, place an empty bag over the material and finish off the compaction with the hand stamper. Hand Stamper is used to ensure that emulsion is activated on the top layer for better finishing. Pay more attention to the edges and additional water can be added there to have a better seal after compaction.



1



3



4



4



5



6



Revolutionising the way roads are built

**Environmentally Friendly Cold Asphalt Premix**

For use in repair and maintenance, re-surfacing and new road surfacing



## Standard Operating Procedure (S.O.P) - 1MT ROLLER COMPACTOR

- 1 Remove all loose stones and debris by sweeping the pothole with industrial broom.  
  
Carboncor Asphalt may be used to fill the entire hole by applying it at a maximum depth of 30 mm compacted per layer. If the pothole is less than 30mm, fill pothole with 1 layer of Carboncor. If pothole is more than 30mm deep, 2 or more layers of Carboncor should be applied and compacted for maximum strength and compaction. No water to be added between Carboncor compacted layers.
- 2 Slightly dampen surface and edges of pothole including the surrounding asphalt area with clean water using a watering can.
- 3 Empty contents of Carboncor material into the pothole and spread evenly with a rake. Allow for about 15mm of material to overlap edges of pothole and a thickness of 10 mm above the surface of the surrounding road to allow for compaction.
- 4 Sprinkle and wet Carboncor material using watering cans. Amount of water should be adequate to activate the emulsion. Using the 1MT roller compactor, compact the material with 2 passes (1 without vibration, 1 with vibration)
- 5 Sprinkle with a little water on Carboncor, place an empty bag over the material and finish off the compaction with the hand stamper. Hand Stamper is used to ensure that emulsion is activated on the top layer for better finishing. Pay more attention to the edges and additional water can be added there to have a better seal after compaction.



1



3



4



5



5



6