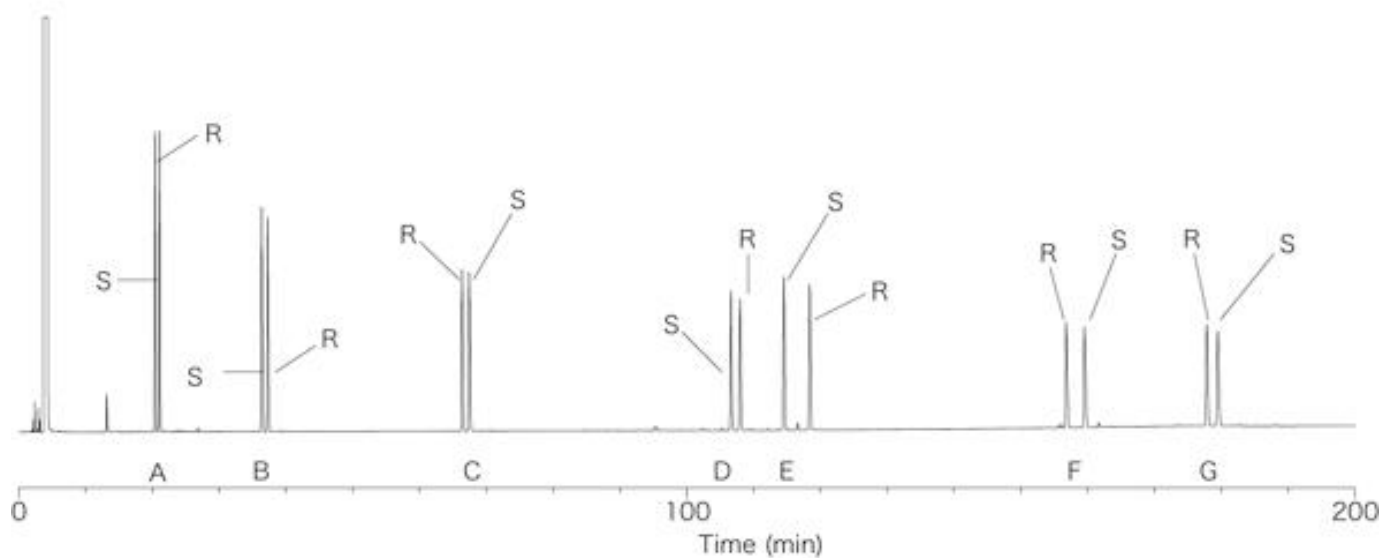


InertSearch™ for GC

InertCap® Applications

Optical isomers

Data No. GA017-0000



System : GC/FID
Column : InertCap CHIRAMIX
Column Temp. : 60° C → 0.7° C/min → 180° C (50min)
Carrier Gas : He 70kPa
Injection : Split 1 : 50 0.4µL
Detection : FID
Sample : Optical isomers

Solutes : 1. A : α -pinene
2. B : limonene
3. C : linalool
4. D : α -damascone
5. E : α -ionone
6. F : δ -jasmine lactone
7. G : γ -dodeca lactone