

# ALPHA<sup>TM</sup> WORKWEAR

EST 2004

## MEDICAL AND CORPORATE UNIFORMS AND CLOTHING







# Contents

|                                      |              |
|--------------------------------------|--------------|
| <b>Workwear</b>                      | <b>Pg 2</b>  |
| <b>Overalls</b>                      | <b>Pg 8</b>  |
| <b>Safety Wear</b>                   | <b>Pg 12</b> |
| <b>PEE</b>                           | <b>Pg 16</b> |
| <b>Gloves</b>                        | <b>Pg 18</b> |
| <b>Ear Protection</b>                | <b>Pg 24</b> |
| <b>Eye Protection</b>                | <b>Pg 26</b> |
| <b>Footwear</b>                      | <b>Pg 28</b> |
| <b>Medical Clothing</b>              | <b>Pg 42</b> |
| <b>Personal Protection Equipment</b> | <b>Pg 55</b> |



## LADIES / MEN'S FORMAL TROUSERS

### FEATURES (As Specified)

Two front slanted pockets, or without Banded inner waistband trim with/without elastic Two back jet pockets, or none Classic pleated front, or none Perfect for security industry 190g 65/35 Poly Viscose, Polyester

### FABRIC

Poly Viscose / Trevira / Polyester



## SKIRT LINED UNIFORM

- Superior quality polyester lined fabric
- Waist band with no belt loops or with loops
- Knee length, button & zip fastening back with back vent

## GOLFER T-SHIRT UNISEX ( LOCAL )



|                 |  |
|-----------------|--|
| <b>Gender</b>   | Unisex   |
| <b>Fabric</b>   | 180gm / 100% Pique / Cotton  |
| <b>Fit</b>      | Classic / Regular Fit  |
| <b>Category</b> | Golf / Polo  |
| <b>Details</b>  | <ul style="list-style-type: none"> <li>• Rib-knit collar, loose pocket provided</li> <li>• 2 button placket, tonal buttons</li> <li>• 100% cotton pique</li> <li>• Tubular knit</li> <li>• Double stitching on sleeves and hems</li> </ul> |

## SHIRTS

Security, Pilot, Combat Long and Short Sleeve





## JERSEY

- Long Sleeve
- Sleeveless
- Colours: Navy, Black, Green, Maroon, etc.
- 100% worsted spun high bulk acrylic 380gsm
- Double Jersey Knit
- Sleeves: Double cuff blind stitched
- Ladies Cardigan
- With Epaulettes /Elbow Patches







**JERSEY  
3 in 1**





## CLASSIC FLEECE HOODIE





# OVERALLS



**FABRIC**  
J54 Blue Florentine Drill  
100% Cotton Fully Shrunk Fabric  
225gms





Flame Retardant & Acid Resist Trousers with reflective stripes  
SABS approved



Royal Blue Conti Suit poly cotton, 2 piece  
Size: 32, 34, 36, 38, 40, 42, 44, 46, 48, 50, 52, 54



Royal Blue Dust Coat  
Size: 36, 38, 40, 42, 44, 46, 48, 50, 52



Dark Blue Conti Suit with reflective, poly cotton, 2 piece  
Size: 32, 34, 36, 38, 40, 42, 44, 46, 48, 50, 52, 54



Flame Retardant & Acid Resist Jacket with reflective stripes  
SABS approved



Orange Conti Suit Poly Cotton 2 piece  
Size: 32, 34, 36, 38, 40, 42, 44, 46, 48, 50, 52, 54



Navy Blue Conti Suit Poly Cotton 2 piece  
Size: 32, 34, 36, 38, 40, 42, 44, 46, 48, 50, 52, 54



Green Flame Retardant Conti Suit 100% Cotton  
Size: 32, 34, 36, 38, 40, 42, 44, 46, 48, 50, 52, 54

# RAIN WEAR



Rubberised Rain Suit Navy

Size: M,L,XL,2XL



Rubberised Rain Suit Yellow

Size: M,L,XL,2XL



Rubberised Rain Suit Yellow with Reflective Strips

Size: M,L,XL,2XL



Rubberised Rain Suit Navy with Reflective Strips

Size: M,L,XL,2XL



# SAFETY WEAR



Navy Freezer Jacket

Size: M,L,XL,2XL



Navy Freezer Pants

Size: M,L,XL,2XL



High Visibility all weather Jacket

Size: M,L,XL,2XL



Orange / Navy two tone freezer Jacket

Size: M,L,XL,2XL



Lime / Navy two tone freezer Jacket

Size: M,L,XL,2XL



Bunny Jacket Lime

Size: M,L,XL,2XL,3XL,4XL,5XL



Bunny Jacket Navy

Size: S,M,L,XL,2XL,3XL,4XL,5XL



Bunny Jacket Orange

Size: S,M,L,XL,2XL,3XL,4XL,5XL



Reflective Golf shirt Lime

Size: M,L,XL,2XL



Reflective Golf shirt Orange Navy

Size: M,L,XL,2XL



Hi Visibility Reflective T Shirt Lime

Size: M,L,XL,2XL



Hi Visibility Reflective T Shirt Orange

Size: M,L,XL,2XL

# REFLECTIVE WEAR



Maxi Reflective Bib Lime (vest material)

Code: 13-100430



Maxi Reflective Bib Orange (vest material)

Code: 13-100431



Reflective Vest with Zip & ID pouch Lime

Size: S, M,L,XL, 2XL, 3XL, 4XL



Reflective Vest with Zip & ID pouch Orange

Size: S, M,L,XL, 2XL



Lime & Orange Reflective Jacket with long sleeve

Size : M,L,XL,2XL



Lime & Orange Reflective Jacket sleeveless

Size : M,L,XL,2XL



**PPE**





Mop Cap 18"  
Colour: white, blue, red, green



Beard Cover white (non woven)  
Code: 13-100265



Disposable Shoe Cover (non woven)  
Code: 13-100260



PVC Apron Heavy Duty  
Colour: green, yellow, white



**GLOVES**

## COTTON GLOVE



Cotton Glove 500g

Code: 13-100118



Polka Dot Glove Single Side Code: 13-100119A

Polka Dot Glove Double Side Code: 13-100119B

## MECHANICAL GLOVE



Mechanical Glove Red

Code: 13-100280



Mechanical Glove Black

Code: 13-100281

## NITRILE GLOVE



Nitrile palm coated glove Smooth Red

Code: 13-100300



Nitrile palm coated glove Sandy Red

Code: 13-100301



Nitrile palm coated glove Smooth Hi Viz Lime

Code: 13-100303



Nitrile palm coated glove Sandy Hi Viz Lime

Code: 13-1003031



Blue Nitrile Coated Glove knit wrist

Code: 13-100305



Green Nitrile Glove

Code: 13-100333-11

## PVC GLOVE



PVC Red glove Knit Wrist

Code: 13-100320



PVC Red glove 27cm Open Cuff

Code: 13-100321



PVC Red glove 35cm Open Cuff

Code: 13-100322



PVC Red glove 40cm Open Cuff

Code: 13-100323



PVC Red glove Rough palm knit wrist

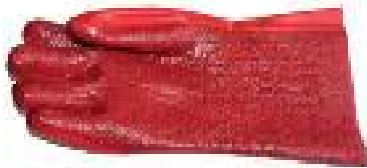
Code: 13-1003231



PVC Red glove Rough palm 27cm Open Cuff

Code: 13-1003232

## CUT RESIST / RUBBER / LATEX GLOVE



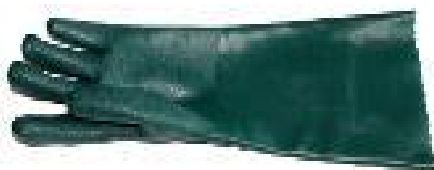
PVC Red glove Rough palm 35cm Open Cuff

Code: 13-1003233



PVC Red Glove shoulder length (yellow attachment)

Code: 13-1003234



PVC green double dip jersey lined glove Elbow length

Code: 13-100328



PVC brown heavy duty glove 27cm Code: 13-1003237

PVC brown heavy duty glove 40cm Code: 13-1003238

## CUT RESIST / RUBBER / LATEX GLOVE



Crayfish Glove

Code: 13-100324



Rubber coated Gripper Glove Crinkle palm

Code: 13-100327



Comarex yellow glove fully dipped knit wrist

Code: 13-100117



Comarex yellow glove Safe Cuff

Code: 13-100119C



Cut Resistant Glove Level 5 PURALITE

Code: 13-100325



Cut Resistant Glove Level 5 GRIPPER

Code: 13-1003251



Yellow Household Glove with flock lining

Size: S, M, L, XL



Examination glove powered Size: S, M, L, XL

Examination glove power free Size: S, M, L, XL



Black Builders Glove

Code: 13-100348



Black Industrial Rubber glove smooth palm 35cm

Code: 13-100349



Black Industrial Rubber glove smooth palm 40cm

Code: 13-100350



Black Industrial Rubber glove rough palm 35cm

Code: 13-1003491



**EAR PROTECTION**

# EAR PROTECTION



Ear Plug Corded Disposable PU Foamed

Code: 13-100130



Ear Plug Tri Flange Reusable

Code: 13-100132



Ear Muff

Code: 13-100135



Ear Plug Uncorded Disposable PU Foamed

Code: 13-100131



# Eye Protection

# EYE PROTECTION



Maxi View Goggle, anti scratch & anti fog

Code: 13-100144



Clear Mono Goggle

Code: 13-100145



Flip Front goggle for gas welding

Code: 13-100146



Spectacle Wrap Around Green

Code: 13-100150



Spectacle Wrap Around Clear

Code: 13-100151



Spectacle Wrap Around Amber

Code: 13-100152



Spectacle Sport Style Green, anti-scratch

Code: 13-100155



Spectacle Sport Style Clear, anti-scratch

Code: 13-100156



# FOOTWEAR

## The Parabellum Range:



### **Gibson Parabellum** MP9351

The classic leather Gibson with a Parabellum outsole. Leather upper. Breathable lining. Cushioned insert. Parabellum rubber outsole and heel. Stitched through construction. Made in the South Africa. Manufactured according to SABS specifications



### **Oxford Parabellum** TP 9811



### **Brogue Parabellum** BP 9351



### **Hamilton Parabellum** HSP 1539



### **Hamilton Parabellum** Lace Up HLP 3561

**A South African  
Legacy**



**ORIGINAL  
PARABELLUM<sup>®</sup>**



**Chelsea Parabellum**  
CP 8172



**Spectre Parabellum**  
FMP 9891



**Harvey Parabellum**  
Lace Up Boot - CLP 9563



**Parabellum Steel Tip Shoe**



**Ladies Gibson  
Parabellum**  
LPA 856



**Ladies Court - Springer**



**Ladies Court - Grace**



**Ladies Court - Kate**



**Ladies Court - Kelly**



The classic leather Gibson with a Parabellum outsole. Leather upper. Breathable lining. Cushioned insert. Parabellum rubber outsole and heel. Stitched through construction. Made in the South Africa. Manufactured according to SABS specifications



## Description

- Full-Grain Leather.
- Steel Toe Cap.
- Steel Midsole.
- Slip resistant.
- Anti-static removable soles.
- Oil & acid resistant.
- Shock absorption heels.
- Wider cut for added comfort.
- CE EN ISO 20345 Approved.
- Ideal for security



## Caterpillar Men's Propane Boots

- Lightweight industrial product that perfectly combines function and comfort.
- It features an Ergo midsole for comfort, extreme slip-resistance technology,
  - A removeable EVA sock liner, and a durable leather upper.
  - If the name of your game is tough and rugged, these boots will be with you every step of the way.
  - Ergo midsole
  - Extreme slip-resistance technology
  - Removeable EVA sock liner
  - Durable leather upper
  - **Colours:** Black and Brown



# FOOT PROTECTION



Pinnacle ROKO Chukka Style Boots - SABS

Steel Toe Cap & Steel Mid-sole

Size: 3,4,5,6,7,8,9,10,11,12



Gum Boots NSTC, Gum Boot STC

Size: 6,7,8,9,10,11,12



Pinnacle AUSTRALIA Chelsea Brown Boots SABS

Steel Toe Cap & Steel Mid-sole

Size: 5,6,7,8,9,10,11



Gum Boots White with red sole (NSTC)

Size: 6,7,8,9,10,11,12

# MASERU BOOTS

**Fabric:** Buffalo leather

**Size:** 3-14

**Colour:** Black

## Details:

- Steel toe cap designed to withstand an impact load of 200 joules
- Buffalo leather for durability
- Oil and acid resistant sole with anti-slip and anti-static properties
- Shank reinforcement for support and stability
- PU/PU sole for comfort, shock absorption and durability
- EVA innersole for comfort and shock absorption



**Details:**

- Light weight & Flexible
- Waterproof
- Oil & Slip resistant
- ISO 9001 standard
- Anti-fatigue all day energy in sole with decompression properties to prevent foot ache
- Cushioned and ergonomic design to fit the shape of your foot
- Shock absorption and comfort
- Anti-microbial & bacterial treated with deodorized in sole to prevent odour build up
- Fibre surface on in sole absorbs excess sweat preventing the foot from slipping inside shoe
- Washable



**Fabric:** Upper: PVC Rubber, Insole: Polyurethane PU, Sole: PVC Rubber

**Size:** 3 - 12

**Colour:** Black, White



M-01

ABBHEY

Steel Toe Cap

Ladies



M-02

MAE

Steel Toe Cap

Ladies



M-10

PROPANE BLACK

Steel Toe Cap

Gents

•The Caterpillar Men's Propane Boots are a lightweight industrial product that perfectly combines function and comfort. It features an Ergo midsole for comfort, extreme slip-resistance technology, a removeable EVA sock liner, and a durable leather upper. If the name of your game is tough and rugged, these boots will be with you every step of the way.

Ergo midsole

- Extreme slip-resistance technology
- Removeable EVA sock liner
- Durable leather upper



M-10

PROPANE BROWN



M-21

EXCAVATOR SUPERLITE

Getta

New Arrivals

Composite Toe Cap



M-11

WHEELBASE



M-22

FAIRBANKS

Steel Toe Cap

Getta

New Arrivals



M-12

MOBILIZE - BLACK

# REBEL

**SAFETY GEAR**

## PRODUCT SPECIFICATIONS

**RE508 WORKPRO** Affordable occupational work shoe (NST)



**PRODUCT CODE:** RE508

**PRODUCT NAME:** WORKPRO

**PRODUCT DESCRIPTION:** Affordable occupational work shoe (NST)

### INFORMATION

|  |  |
|--|--|
| COLOUR   | Black                                  |
| SIZE RANGE                                     | 2 – 12 (unisex, starts from a size 2)  |
| ISO 20345 CLASSIFICATION                       | NO anti-static properties              |
| SLIP RESISTANCE CLASSIFICATION SRA / SRB / SRC | N/A                                    |
| CONSTRUCTION                                   | Injection moulded construction process |
| SABS   | N/A                                    |
| NRCS APPROVAL NO                               | N/A                                    |

### MATERIALS

|                  |  |
|------------------|--|
| UPPER            | High quality action leather  |
| SOLE             | Dual density polyurethane (PU)   |
| EYELETS          | Metal eyelets  |
| LINING           | Black talbrelle mesh and microfiber  |
| TOE-CAP          | No steel toe cap   |
| FOOTBED (INSOLE) | Moulded polyurethane (PU); talbrelle mesh upper with contoured heel and arch |
| INSOLE BOARD     | 3MR Ibttech non-woven Insole board   |

### SPECIAL FEATURES

|         |     |
|---------|-----|
| UPPER   | Non |
| MIDSOLE | Non |
| OTHER   | Non |

### KEY FEATURES



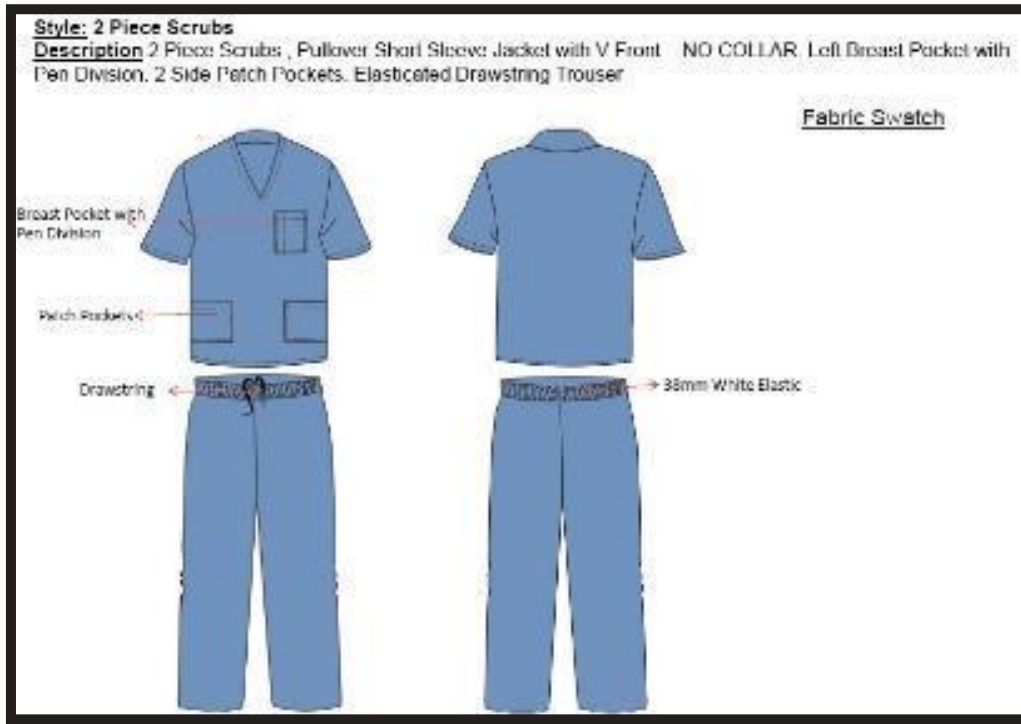
### SUGGESTED ENVIRONMENTS



# **MEDICAL CLOTHING**

**SCRUBS; THEATRE CAPS; COATS;  
DRESSES TOPS; MEDICAL UNIFORMS**

## SCRUBS and THEATRE CAPS





## SCRUBS and THEATRE CAPS



| SIZE       | A  | B  | C  | D  | E   |
|------------|----|----|----|----|-----|
| X-SMALL    | 55 | 52 | 71 | 50 | 93  |
| SMALL      | 59 | 55 | 72 | 53 | 104 |
| MEDIUM     | 62 | 58 | 72 | 56 | 105 |
| LARGE      | 66 | 61 | 73 | 58 | 106 |
| X-LARGE    | 68 | 64 | 74 | 61 | 107 |
| XX-LARGE   | 73 | 70 | 76 | 62 | 109 |
| XXX-LARGE  | 78 | 74 | 77 | 63 | 110 |
| XXXX-LARGE | 82 | 76 | 78 | 64 | 111 |

*All measurement are in centimetres*



## Tops

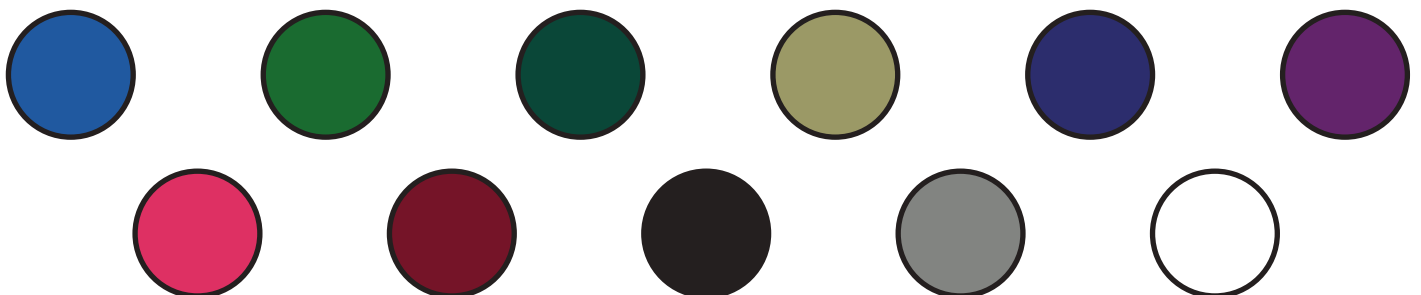
- V Neck
- Unisex Scrub Suit
- 1 Breast Pocket and 2 Bottom Pockets
- Side Slits
- Peach-feel on Interior Providing Comfort



## Pants

- Elasticised Waist With Draw String
- 1 Rear Pocket
- 1 Front Pocket With Division For Pen
- Peach-feel on Interior Providing Comfort

## Available Colours



## Laboratory Pharmacy Doctor Coats



## Dresses Tops Coats



## Medical Uniforms and Clothing









## Asymmetrical Zip Front Scrub Tunic: Ladies

This versatile asymmetrical zip-front, V-neck tunic features front and back princess seams, two angled front welt pockets, power angled front welt pockets, power mesh panels embellished at shoulder and sleeves with vents for ease of movement.

Shirrtail hem and side vents complete hem and side vents complete hem and side vents complete this form flattering tunic.





**Fabrics Taslon Quantec**

**•Cotton**

- Natural soft feel with high breathability
- More prone to shrinkage & wrinkles
- Light & Cool
- Hypoallergenic

**•Combed Cotton**

- Same as cotton but made with short fibers for a cleaner more lustrous fabric

**•Polyester**

- High strength & durability
- Excellent resiliency & abrasion resistance
- Dries quickly

**•Poly / Cotton Blend**

- Versatile & durable
- Maintains shape & color
- Can be stiff initially, but softens quickly
- Resists wrinkles, pilling, & shrinkage

**•Rayon**

- Silk like fabric made from wood pulp or vegetable matter
- Comfortable against skin with good moisture absorption

**•Spandex**

- Synthetic fiber made from polyurethane
- Lightweight & strong
- Highly elastic & durable
- Non-absorbant to water & oils

**•X-Static**

- Silver fiber embedded into fabric
- Anti-Odor and antibacterial fiber

**Types of Weaves**

**Twill** - Fabric woven into diagonal "ribs" shape for increased durability.

**Heavy Twill** - Same as twill but a heavier weight. Similar to blue jeans.

**Poplin** - A plain weave that produces a smooth, light, soft, & durable fabric. Similar to a dress shirt

## Scrubs Suits Uniforms







# Personal Protection Equipment

We empathise regarding the challenges experienced regarding the corona virus outbreak affecting communities in south africa and globally..

## **We offer the following services:**

Local manufacture: medical linen and clothing, protective clothing

Import and distribution: medical supplies and consumables, including protective wear like: isolation and protective

## Respiratory Protection



## Hand Protection



## Head Protection



## Arm Protection



- used new PE/CPE/TPE material
- tough wear-resistant durable
- waterproof dust-proof oil-proof
- stable quality, good texture
- Can Be Used Cleaning Tattoo, or Hospital, Painting, Repair, Lab, etc

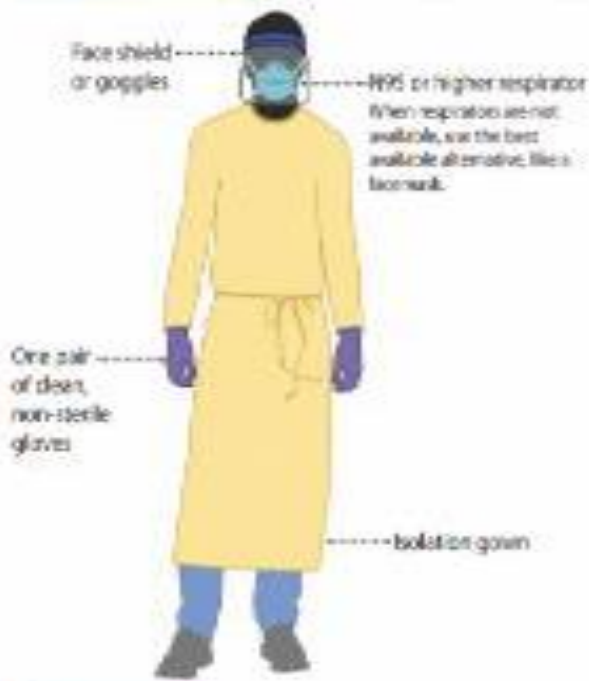
## Feet / Shoe Protection



# Body Protection



**Preferred PPE – Use N95 or Higher Respirator**



**Acceptable Alternative PPE – Use Facemask**





**Disposable garments**

**Head protection**

- ▶ non-woven hoods / bouffant caps
- ▶ full protective hoods

**Body protection**

- ▶ coveralls / overalls
- ▶ lab coats
- ▶ jacket / trousers combination
- ▶ aprons / sleeve protectors
- ▶ gloves

**Face protection**

- ▶ protective goggles
- ▶ face masks
- ▶ beard cover masks
- ▶ Visors

**Feet protection**

- ▶ overboots
- ▶ overshoes
- ▶ anti-slip versions
- ▶ antistatic versions
- ▶ socks



Office: +27 31 208 5831 | +27 31 208 5844  
Mobile: +27 83 340 5249 | +27 82 889 8354  
Fax: +27 866 01 9791  
E-mail: [info@alphaworkwear.co.za](mailto:info@alphaworkwear.co.za)

Physical Address: 138 Keal Road, Sydenham, Durban, KZN, South Africa, 4091  
Postal Address: PO Box 37908, Overport, Durban, KZN, South Africa, 4067

[www.alphaworkwear.co.za](http://www.alphaworkwear.co.za)

