

PERÜCKEN · WIGS · PERRUQUES · PELUCAS · PARRUCHE

Belle Madame®

NEWS *Stylis* 2022

by DENING HAIR 

PERÜCKEN
Wigs

NEWS 2022



DORA MONO SF 4



OLIVIA MONO SF 6



CHIARA SF 8



KIM SF 10

SYNTHETIKPERÜCKEN SYNTHETIC WIGS

SHORT STYLE

DORA MONO SF 4-5

BOB STYLES

OLIVIA MONO SF 6-7

CHIARA SF 8-9

LONG HAIR STYLE

KIM SF 10-11

HAARTEILE SYNTHETIK HAIR PIECES SYNTHETIC

TOPPER (HALBPERÜCKEN) 12-13

TOPPER (HALF-WIGS)

TOPPER PAGE SF 14-15

TOPPER WAVE SF 16-17

TOPPER STRAIGHT SF 18-19

BelleMadamé
HAIR COLLECTION



TOPPER PAGE SF 14



TOPPER WAVE SF 16



TOPPER STRAIGHT SF 18



VALENTINA RH 22



ANASTASIA EXTRA LONG RH 24

ECHTHAAR-PERÜCKEN HUMAN HAIR WIGS

BOB STYLE

VALENTINA RH 22-23

LONG HAIR STYLE

ANASTASIA EXTRA LONG RH 24-25

BelleMadamé
Natural Hair Line

HAARTEIL ECHTHAAR HAIR PIECE HUMAN HAIR

NEW SIZE

NIZZA EXTRA LARGE RH 26-27



NIZZA EXTRA LARGE RH 26



DORA MONO

DORA MONO SF Sand-Grey-Mix

DORA MONO SF



SUPER-FRONT

BROWN COLOURS

Dark-Mocca (4/6-4),
Mocca (6/10/30),
Cold-Chocolate (5/8/14),
Chocolate-Mix (8/10/27/20)

BLOND COLOURS

Chocolate/Cream-Root (10/27/20R+Root10),
Honey-Toast (14/20/25R-12),
Vanilla-Root (14/26+Root14),
Champagne-Root (22H/22+Root12),
Nordic-Ash-Blond (22/24R-16+Root14)

RED COLOURS

Dark-Red-Mix (30/6/27-6),
Terracotta-Mix-Root (30/27+Root4)

GREY COLOURS

38/39,
Salt&Pepper (44/51/60),
56/53-39,
60-56-51,
60/101,
Sand-Grey-Mix (8/18/101),
Blond-Grey-Root (17/101+Root18),
101/14-14



DORA MONO SF
Sand-Grey-Mix



DORA MONO SF Terracotta-Mix-Root



OLIVIA MONO

OLIVIA MONO SF Rose-Ash-Blond

OLIVIA MONO SF



SUPER-FRONT

BROWN COLOURS

- Espresso (2),
- Dark-Mocca (4/6-4),
- Mocca (6/10/30),
- Chocolate-Mix (8/27-4)

BLOND COLOURS

- Chocolate/Cream-Root (10/27/20R+Root10),
- Honey-Mix-Root (14/25R+Root12),
- Champagne-Mix-Root (23A/26+Root12),
- Swedish-Blond-Mix (25R/22H-20+Root16),
- Rose-Ash-Blond (24/23A/101+Rose)

RED COLOURS

- Terracotta-Gold (8/27R-8),
- Ruby-Mix (33/32B/135)

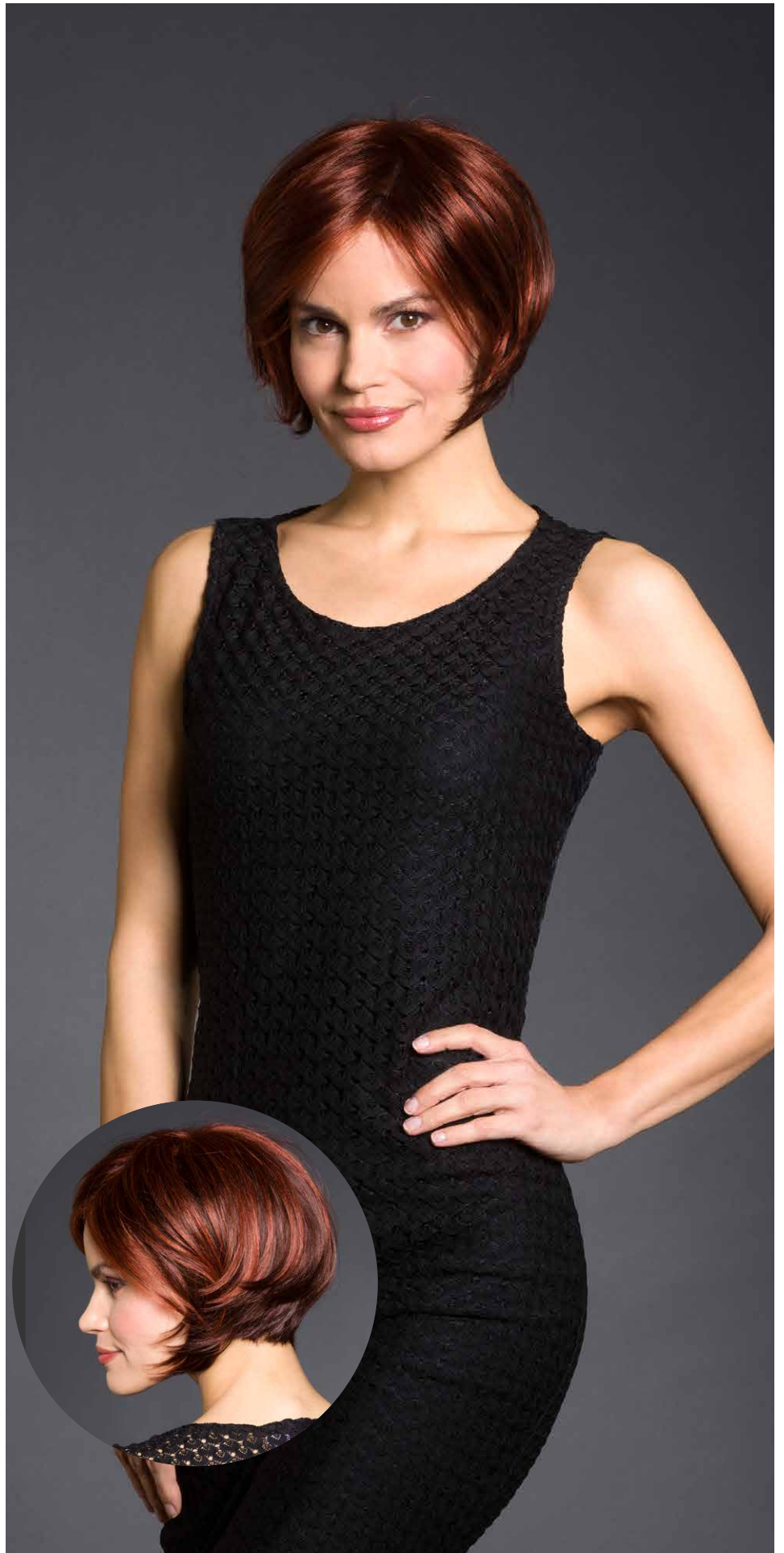
GREY COLOURS

- Salt&Pepper (44/51/60),
- 60-56-51,
- Platinum-Grey-Root (101/23/10+Root10),
- 101/14-14

360°



OLIVIA MONO SF
Rose-Ash-Blond



OLIVIA MONO SF Ruby-Mix



CHIARA SF Honey-Mix

CHIARA SF

●●●○○○ ◀ S/M

SUPER-FRONT

Mono-Scheitel / Mono-Parting

BROWN COLOURS

- Dark-Mocca (4/6-4),
- Mocca-Brown (6/8/27R),
- Cold-Chocolate (5/8/14),
- Chocolate-Mix (8/10/27/20),
- Dark-Copper-Root (8/30/27+Root4)

BLOND COLOURS

- Caramel-Root (12/27/20+Root8),
- Honey-Mix (14/20/25R),
- Vanilla-Root (14/26+Root14),
- Champagne-Root (22H/22+Root12),
- Nordic-Ash-Blond (22/24R-16+Root14),
- Swedish-Blond-Root (25R/22H+Root16)

RED COLOURS

- Rusty-Red (31/33)

GREY COLOURS

- Pepper-Root (44/60+Root4),
- Blond-Grey-Root (17/101+Root18),
- Platinum-Blond-Grey-Root (101/20+Root10)

360°



CHIARA SF
Honey-Mix



CHIARA SF
Pepper-Root

CHIARA SF Rusty-Red



KIM SF Cool-Danish-Blond-Root

KIM SF

●●●○○○ ◀ S/M

SUPER-FRONT

Mono-Scheitel / Mono-Parting

BROWN COLOURS

Espresso (2),
 Dark-Mocca (4/6-4),
 Mocca (6/10/30),
 Dark-Brown/Copper-Ombre (6-27R),
 Chocolate (8/12/30),
 Chocolate-Mix (8/10/27/20)

BLOND COLOURS

Medium-Blond/Danish-Blond-Ombre
 (12/14-20R/22H),
 Caramel-Root (12/27/20+Root8),
 Honey-Mix (14/20/25R),
 Vanilla-Light-Root (16/20/26+Root8),
 Cool-Danish-Blond-Root (20/22H+Root14),
 Champagne-Ash-Root (22H/22/20+Root10),
 Swedish-Blond-Root (25R/22H+Root16)

RED COLOURS

Dark-Purple/Flame (2V/133/135),
 Terracotta-Gold (8/27R-8)

GREY COLOURS

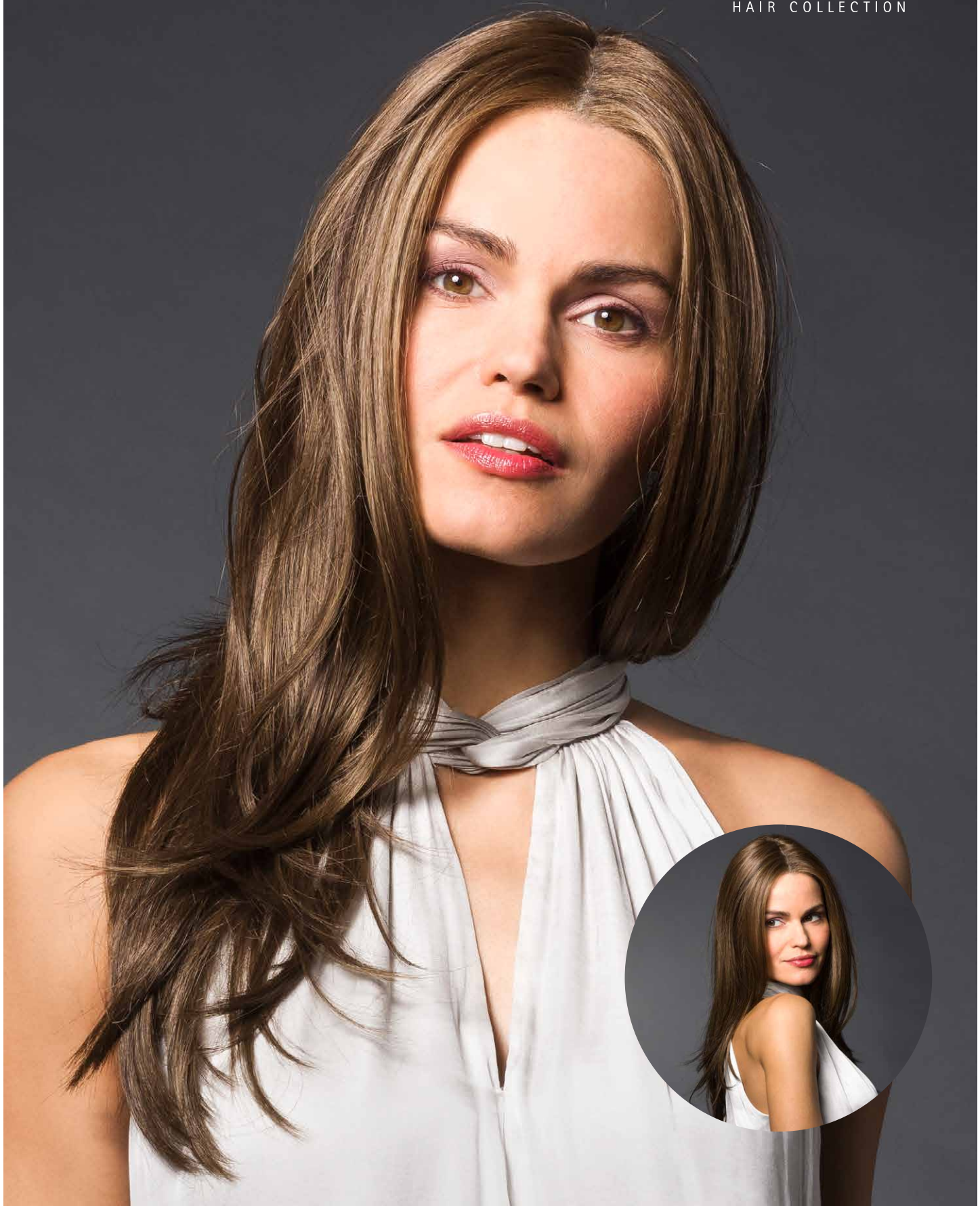
Platinum-Blond-Grey-Root (101/20+Root10)

OMBRE COLOURS

Dark-Brown/Copper-Ombre (6-27R),
 Medium-Blond/Danish-Blond-Ombre
 (12/14-20R/22H)



KIM SF
 Cool-Danish-Blond-Root



KIM SF *Chocolate-Mix*



HAARTEILE SYNTHETIK
TOPPER (HALBPERÜCKEN)



DIE BELLE MADAME TOPPER SIND HALBPERÜCKEN, DIE EINEN LICHTEN OBERKOPF ODER HAARANSATZ ABDECKEN. SIE KÖNNEN ABER AUCH ALS ERGÄNZUNG ZUM EIGENHAAR GETRAGEN WERDEN, UM IHM MEHR LÄNGE, FÜLLE UND VOLUMEN ODER AUCH EINE ANDERE HAARSTRUKTUR ZU GEBEN. IM HANDUMDREHEN LÄSST SICH SO EIN NEUER LOOK KREIEREN.

Die Topper werden meist mit ihren 6 sehr leichten Clipsen befestigt. Hierfür muss jedoch ausreichend Eigenhaar vorhanden sein. Alternativ können die Clipse am Ansatz und an den Tempeln entfernt werden. Unter den Clipsen befindet sich eine PU-Klebefläche, welche als Klebestelle mit doppel-seitigem Spezialklebeband direkt auf der Kopfhaut befestigt werden kann.



SEITE
PAGE

14
TOPPER
PAGE SF



Die Längen fließen ins eigene Haar mit ein. Ein Scheitel kann dank der Monofilament Montur am Oberkopf an beliebiger Stelle gesetzt werden. Einen sehr natürlichen Haaransatz simuliert die Super-Front, welche das Haar wie natürlich gewachsen erscheinen lässt.



SEITE
PAGE

16
TOPPER
WAVE SF

HAIR PIECES SYNTHETIC
TOPPER (HALF-WIGS)



THE BELLE MADAME TOPPERS ARE HALF-WIGS THAT COVER A THINNING TOP OF THE HEAD OR HAIRLINE. THEY CAN ALSO BE WORN AS AN ADDITION TO OWN HAIR TO GIVE IT MORE LENGTH, FULLNESS AND VOLUME OR EVEN A DIFFERENT HAIR TEXTURE. A NEW LOOK CAN BE CREATED IN THE TWINKLING OF AN EYE.

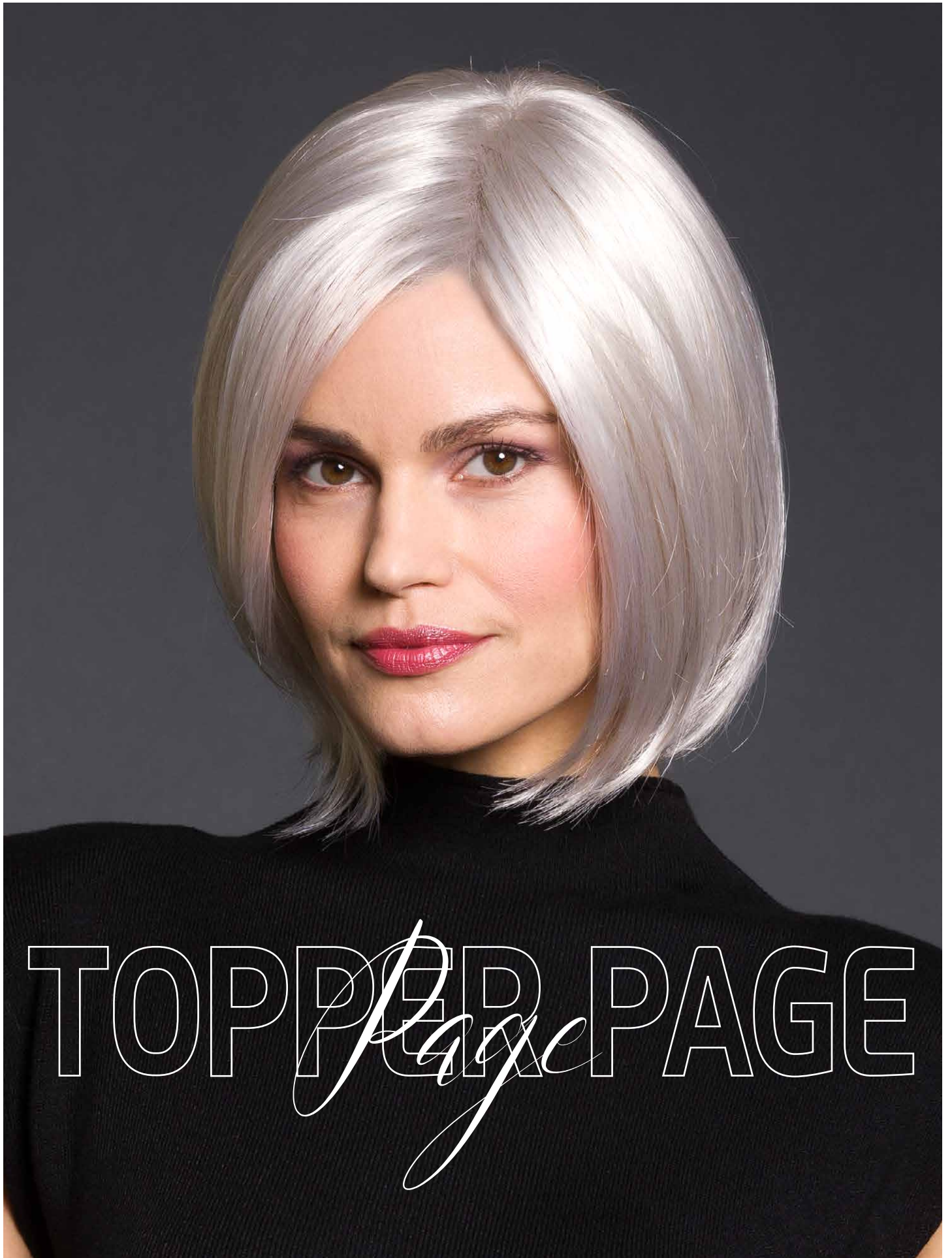
The toppers are usually attached with their 6 very light clips. However, there must be sufficient own hair for this. Alternatively, the clips can be removed at front and temples. Underneath the clips is a PU adhesive surface, which can be bonded directly to the scalp with special double-sided adhesive tape.

The lengths flow into the own hair. A parting can be made anywhere on the top of the head thanks to the monofilament base. A very natural hairline is simulated by the Super-Front, which makes the hair look like it has grown naturally.



SEITE
PAGE

18
TOPPER
STRAIGHT SF



TOPPER PAGE SF 60-56-51



TOPPER PAGE SF

●●●●○◀ SUPER-FRONT

GRÖSSE / SIZE 23 x 21,5 cm

HAARLÄNGE / HAIR LENGTH 25 cm

Halbperücke: Mono-Top + Tressen
mit 6 Clipsen und SUPER-FRONT.

Half-wig: Mono-Top + wefts
with 6 clips and SUPER-FRONT.

BROWN COLOURS

Espresso (2),
Dark-Mocca (4/6-4),
Mocca (6/10/30),
Cold-Chocolate (5/8/14),
Chocolate-Mix (8/10/27/20)

BLOND COLOURS

Caramel-Root (12/27/20+Root8),
Honey-Mix (14/20/25R),
Vanilla-Root (14/26+Root14),
Cool-Danish-Blond-Root (20/22H+Root14),
Champagne-Root (22H/22+Root12),
Nordic-Ash-Blond (22/24R-16+Root14),
Swedish-Blond-Root (25R/22H+Root16)

RED COLOURS

Rusty-Red (31/33)

GREY COLOURS

Salt&Pepper (44/51/60),
56/53-39,
60-56-51,
101/14-14



TOPPER PAGE SF Swedish-Blond-Root



TOPPER WAVE SF Salt & Pepper



TOPPER WAVE SF

●●●●○◀ SUPER-FRONT

GRÖSSE / SIZE 23 x 21,5 cm

HAARLÄNGE / HAIR LENGTH 30 cm

Halbperücke: Mono-Top + Tressen
mit 6 Clipsen und SUPER-FRONT.

Half-wig: Mono-Top + wefts
with 6 clips and SUPER-FRONT.

BROWN COLOURS

Espresso (2),
Dark-Mocca (4/6-4),
Mocca-Brown (6/8/27R),
Cold-Chocolate (5/8/14),
Chocolate-Mix (8/10/27/20)

BLOND COLOURS

Caramel-Root (12/27/20+Root8),
Honey-Mix (14/20/25R),
Vanilla-Root (14/26+Root14),
Cool-Danish-Blond-Root (20/22H+Root14),
Champagne-Root (22H/22+Root12),
Nordic-Ash-Blond (22/24R-16+Root14),
Swedish-Blond-Root (25R/22H+Root16)

RED COLOURS

Rusty-Red (31/33)

GREY COLOURS

Salt & Pepper (44/51/60),
Blond-Grey-Root (17/101+Root18),
Platinum-Blond-Grey-Root (101/20+Root10)



TOPPER WAVE SF
Vanilla-Root





TOPPER STRAIGHT SF *Platinum-Blond-Grey-Root*



TOPPER STRAIGHT SF

●●●●○◀ SUPER-FRONT

GRÖSSE / SIZE 21,5 cm / 23 x 21,5 cm
HAARLÄNGE / HAIR LENGTH 35 cm

Halbperücke: Mono-Top + Tressen
mit 6 Clipsen und SUPER-FRONT.

Half-wig: Mono-Top + wefts
with 6 clips and SUPER-FRONT.

BROWN COLOURS

Espresso (2),
Dark-Mocca (4/6-4),
Mocca (6/10/30),
Chocolate (8/12/30),
Chocolate-Mix (8/10/27/20)

BLOND COLOURS

Caramel-Root (12/27/20+Root8),
Honey-Mix (14/20/25R),
Vanilla-Root (14/26+Root14),
Danish-Blond-Root (20R/22H+Root14),
Champagne-Root (22H/22+Root12),
Nordic-Ash-Blond (22/24R-16+Root14),
Swedish-Blond-Root (25R/22H+Root16)

RED COLOURS

Rusty-Red (31/33)

GREY COLOURS

Salt&Pepper (44/51/60),
Blond-Grey-Root (17/101+Root18),
Platinum-Blond-Grey-Root (101/20+Root10)



TOPPER STRAIGHT SF Mocca



Belle  Madame[®]
Natural Hair Line

ANASTASIA EXTRA LONG RH Mocca-Mix

ECHTHAAR-PERÜCKEN
HUMAN HAIR WIGS

SEITE
PAGE

22

VALENTINA RH

Valentina



CREATIVE STYLING

SEITE
PAGE

24

ANASTASIA EXTRA LONG RH

Anastasia



SEITE
PAGE

26

NIZZA EXTRA LARGE RH

Nizza



HAARTEIL ECHTHAAR
HAIR PIECE HUMAN HAIR



VALENTINA

VALENTINA RH Mocca-Mix

VALENTINA RH

●●●●●● < S/M (53-55cm)
SUPER-FRONT

HAARLÄNGE / HAIR LENGTH 35 cm
HAARDICHTE / HAIR VOLUME 115%
leicht-mittel / light-medium

BROWN COLOURS

Espresso (2),
Dark-Mocca (4),
Mocca-Mix (6/10-6),
Chocolate (8/12/30)

BLOND COLOURS

Caramel-Root (12/27/22H+Root10),
Honey-Mix (12A/25R/28),
Light-Blond-Mix (15/20/23+Root11),
Champagne-Root (20R/23+Root10),
Swedish-Blond-Root (23A/26+Root16)*

RED COLOURS

Dark-Auburn-Mix (33/30),
Ruby-Mix (33/32B/135/29)



360°



VALENTINA RH
Mocca-Mix

CREATIVE STYLING



VALENTINA RH
Caramel-Root

VALENTINA RH Mocca-Mix

* Enthält 5% hitzbeständiges Synthetikkaar.
Contains 5% heat-resistant synthetic hair.



ANASTASIA
Anastasia
EXTRA LONG

ANASTASIA EXTRA LONG RH Mocca-Mix

ANASTASIA EXTRA LONG RH

●●●●●● < S (52-54cm)

SUPER-FRONT

HAARLÄNGE / HAIR LENGTH 45 - 50 cm

HAARDICHTE / HAIR VOLUME 100%

leicht / light

BROWN COLOURS

Espresso (2),

Dark-Mocca (4),

Mocca-Mix (6/10-6),

Chocolate (8/12/30)

BLOND COLOURS

Chocolate/Cream-Root (10/27/20R+Root8),

Honey-Mix (12A/25R/28),

Light-Blond-Mix (15/20/23+Root11),

Champagne-Root (20R/23+Root10),

Swedish-Blond-Root (23A/26+Root16)*

RED COLOURS

Dark-Auburn-Mix (33/30)

360°



ANASTASIA EXTRA LONG RH
Mocca-Mix



ANASTASIA EXTRA LONG RH Champagne-Root

* Enthält 5% hitzbeständiges Synthetikkaar.
Contains 5% heat-resistant synthetic hair.



NIZZA EXTRA LARGE RH



NIZZA EXTRA LARGE RH

HUMAN HAIR

GRÖSSE / SIZE 20 x 15 cm
HAARLÄNGE / HAIR LENGTH 35 cm

Fein-Mittel-Mono-Scheitel
mit 4 Clipsen und Film-Ansatz.

Fine-Welded-Mono-Parting
with 4 clips and Lace-Front.

BROWN COLOURS

Espresso (2),
Dark-Mocca-Mix (4/8),
Mocca-Mix (6/10-6),
Chocolate (8/12/30),
Chocolate-Mix (8/10/27/20)

BLOND COLOURS

Medium-Ash-Blond (10/12),
Chocolate/Cream-Root (10/27/20R+Root8),
Honey-Mix (12A/25R/28),
Vanilla-Root (14/26+Root14),
Light-Blond-Mix (15/20/23+Root11),
Champagne-Root (20R/23+Root10),
Swedish-Blond-Root (23A/26+Root16)*

RED COLOURS

Brown-Red-Mix (6/30),
Dark-Auburn-Mix (33/30)

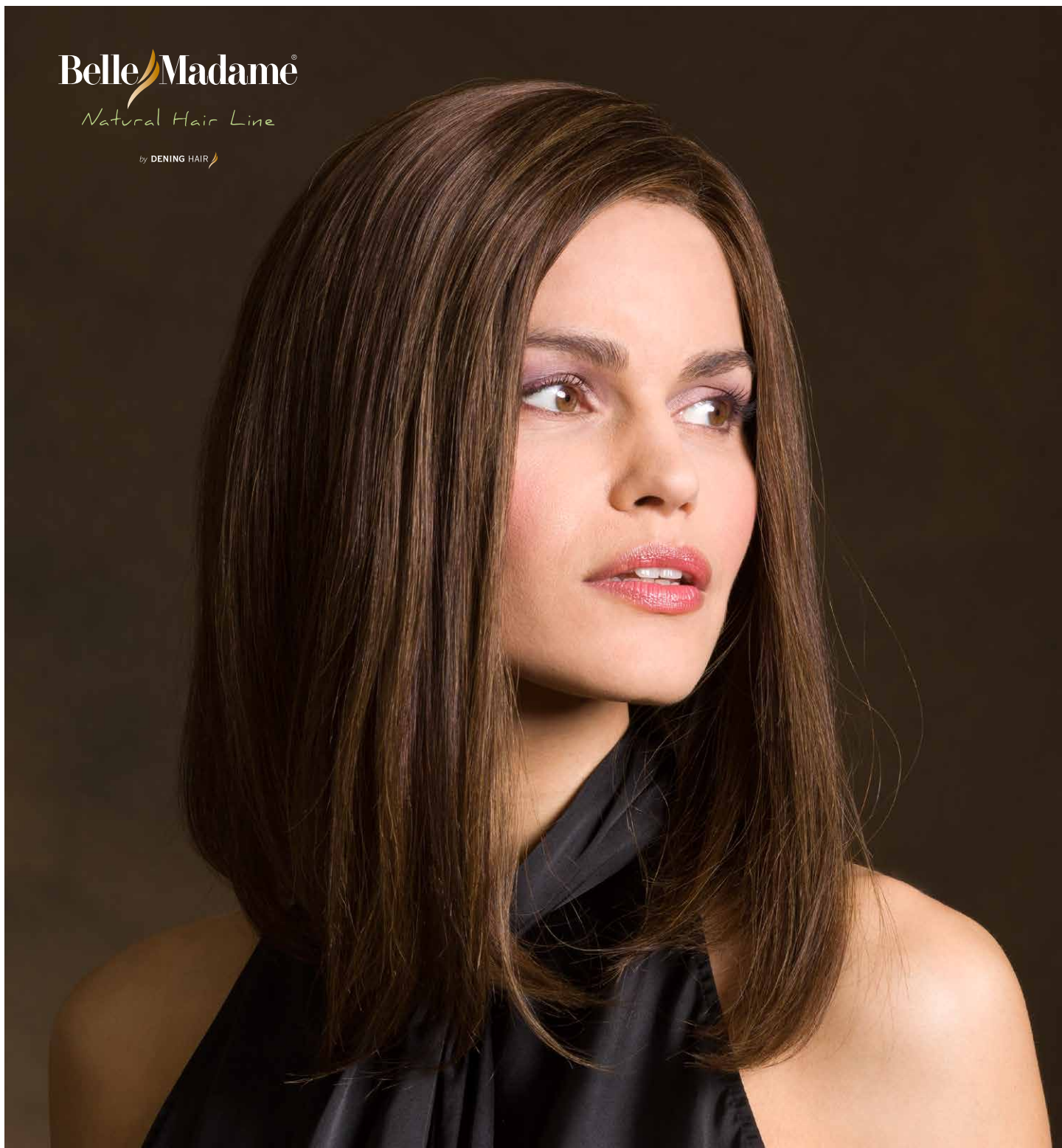


NIZZA EXTRA LARGE RH Mocca-Mix

* Enthält 5% hitzbeständiges Synthetikhaar.
Contains 5% heat-resistant synthetic hair.

BelleMadame®
Natural Hair Line

by DENING HAIR



VALENTINA RH Mocca-Mix Seite 22 / Page 22