

ADIMPEX S.r.l.

Via Adriatica n. 17/C
60022 Castelfidardo (AN) - Italy

071.721091

info@adimpex.it

www.adimpex.it

1,27x1,27mm pitch PCB connectors

Our company

Electronic components since 1978

Adimpex s.r.l. was born in 1978 as an electronic components dealer with regional work area.

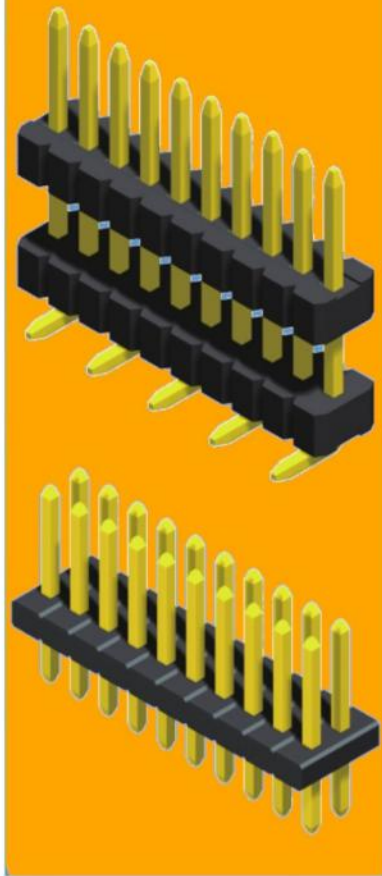
To face the growing demand, Adimpex drastically increased its product range, quickly covering the whole national territory with a wide network of well experienced sales agents.

The plant area consists of over 4000 m², most of which used for goods storage. Today more than 20.000 different kind of products are stored in our warehouse.

Adimpex grants a special attention to the quality of service, having a wide range of products available in stock and working in full support of customers.

Being at the same time innovative and flexible, yet experienced and solid, Adimpex is the perfect choice both for customers and suppliers, looking for a stable and successful commercial partnership.

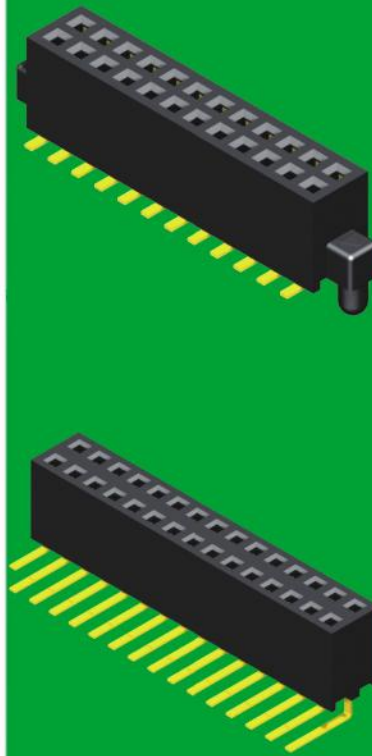




**Male Pin
Header.**

**Pitch:
1,27x1,27mm**

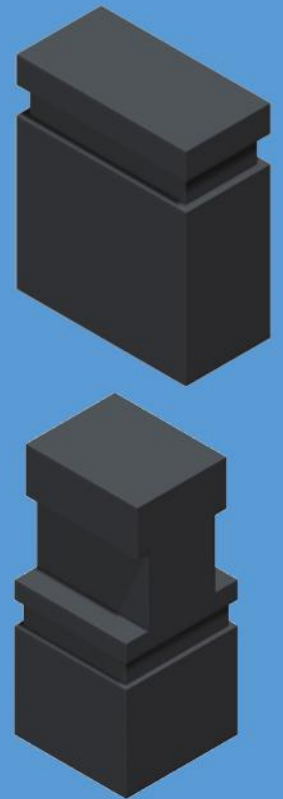
PAG. 6



**Female Pin
Header.**

**Pitch:
1,27x1,27mm**

PAG. 10

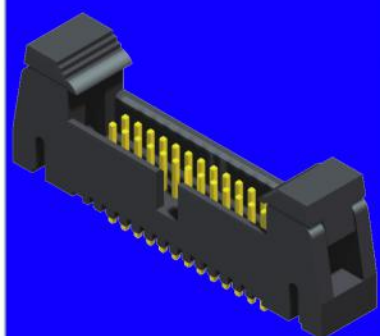
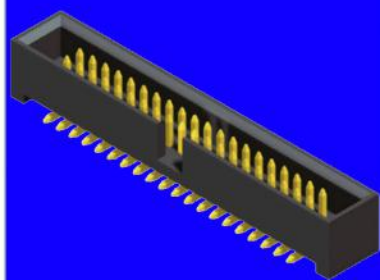


Minijumpers

PAG. 15

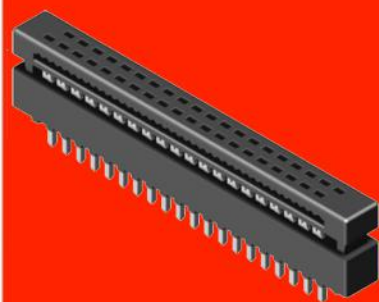
INDICE DEI CONTENUTI





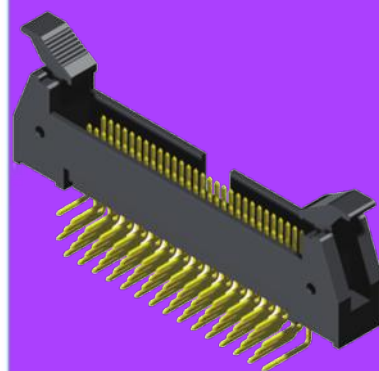
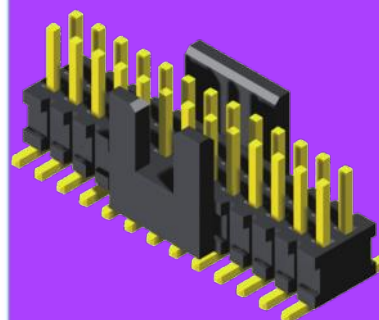
**Male IDC
Connectors
Pitch:
1,27x1,27mm**

PAG. 16



**DIP PLUG
Connectors
Pitch:
1,27x1,27mm**

PAG. 18



**Other series
available
under request**

PAG. 19

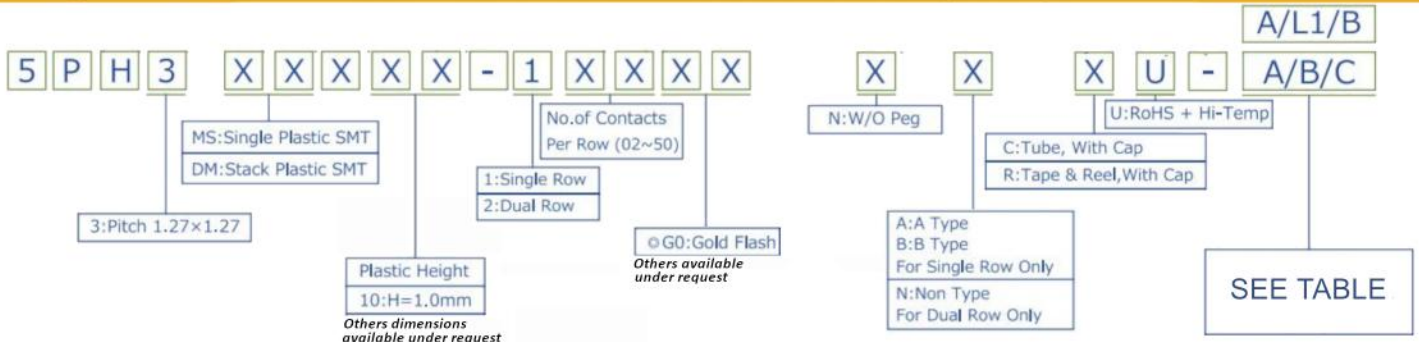
DTI / CONTENT INDEX



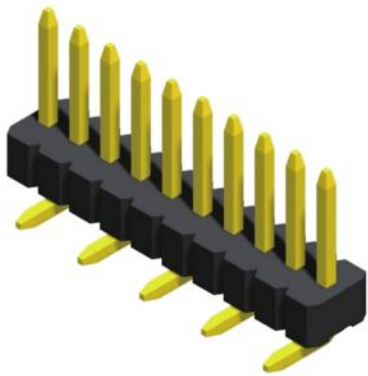
1,27x1,27mm pitch PCB male Pin Headers

FEATURES:

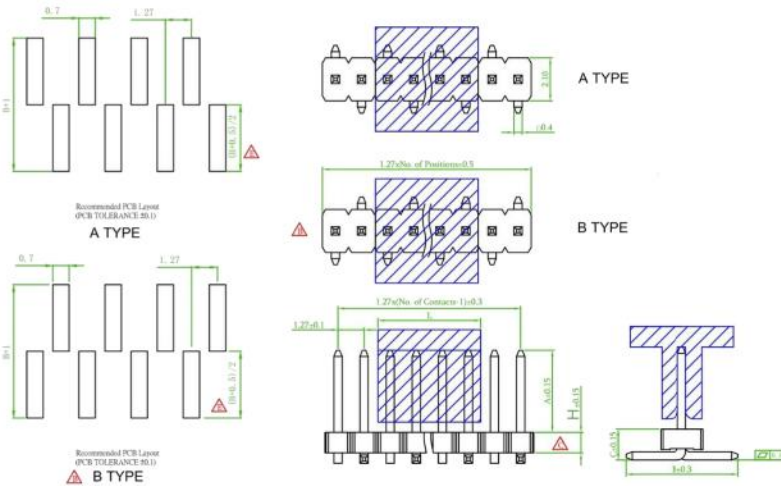
- Current rate: 1 A
- Insulation resistance: 1000 MΩ Min.
- Contact resistance: 20 MΩ Max.
- Dielectric voltage: 500V AC for 1 minute
- Operating temperature: -40°C ÷ +105°C



+ SMD, male, single row, straight

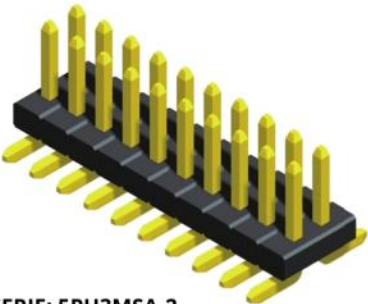


SERIE: 5PH3MSA-1

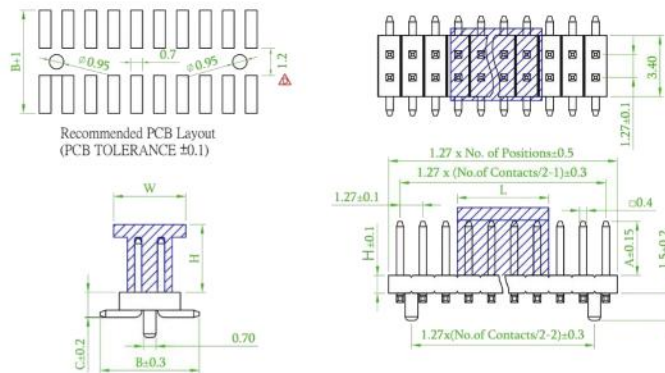


DIMENSIONS	
A	B
4mm	5mm

+ SMD, male, double row, straight

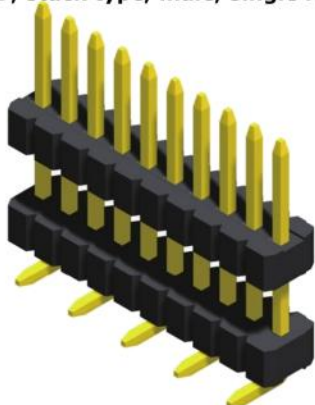


SERIE: 5PH3MSA-2

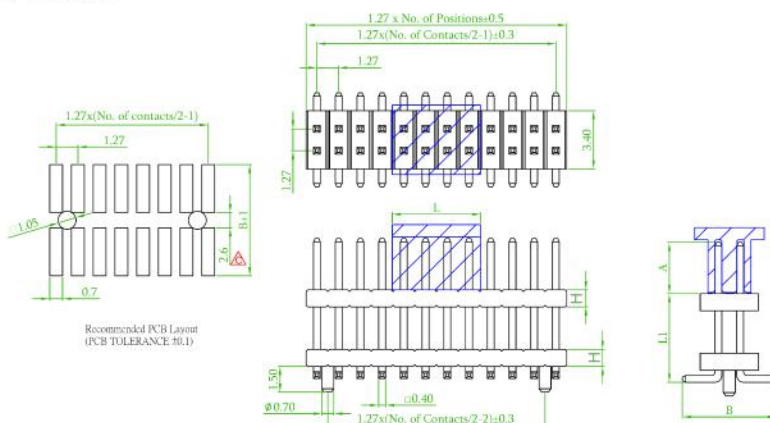


DIMENSIONS	
A	B
4mm	5,5mm

+ SMD, stack type, male, single row, straight



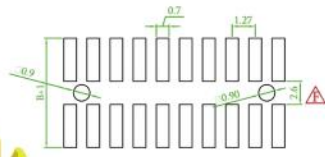
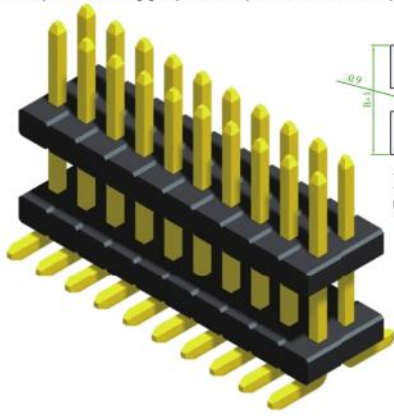
SERIE: 5PH3DMA-1



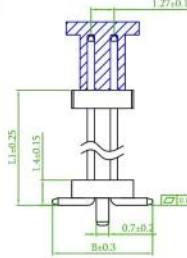
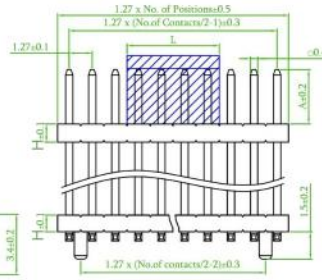
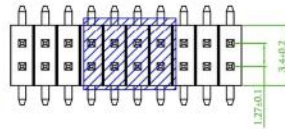
DIMENSIONS		
A	L1	B
4mm	4mm	5mm
	5mm	
	6mm	
	8mm	
	10mm	

Others dimensions available under request

+ SMD, stack type, male, double row, straight



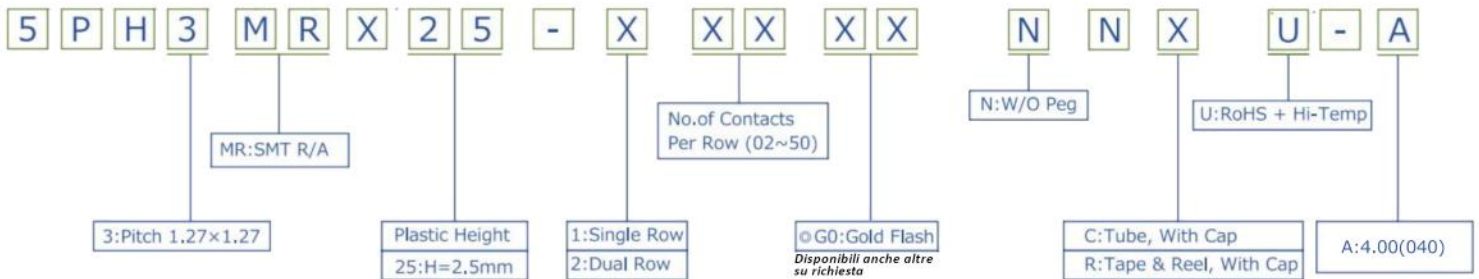
Recommended PCB Layout
(PCB TOLERANCE ± 0.1)



DIMENSIONS		
A	L1	B
4mm	4mm	5,5mm
	5mm	
	6mm	
	8mm	
	10mm	

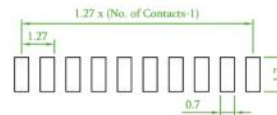
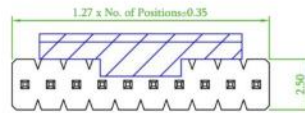
Others dimensions available under request

SERIE: 5PH3DMA-2

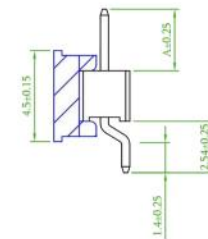
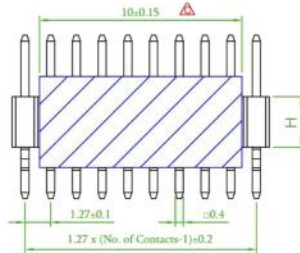


⊙: Standard Recommend
Tube package is not available for under 1*5 & 2*5 pin counts

+ SMD, male, single row, right angle

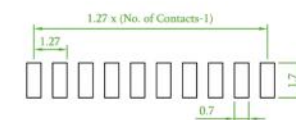
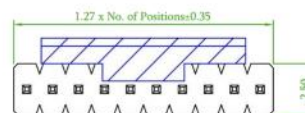
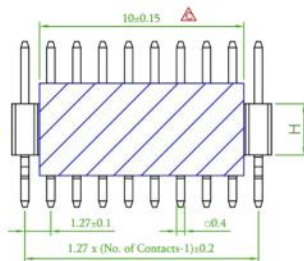
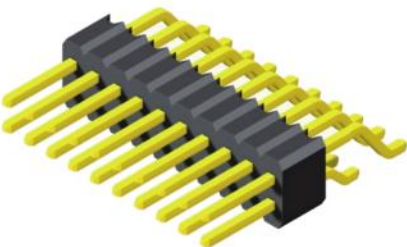


Recommended PCB Layout
(PCB TOLERANCE ± 0.1)

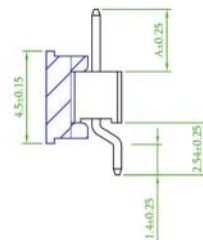


SERIE: 5PH3MRA-1

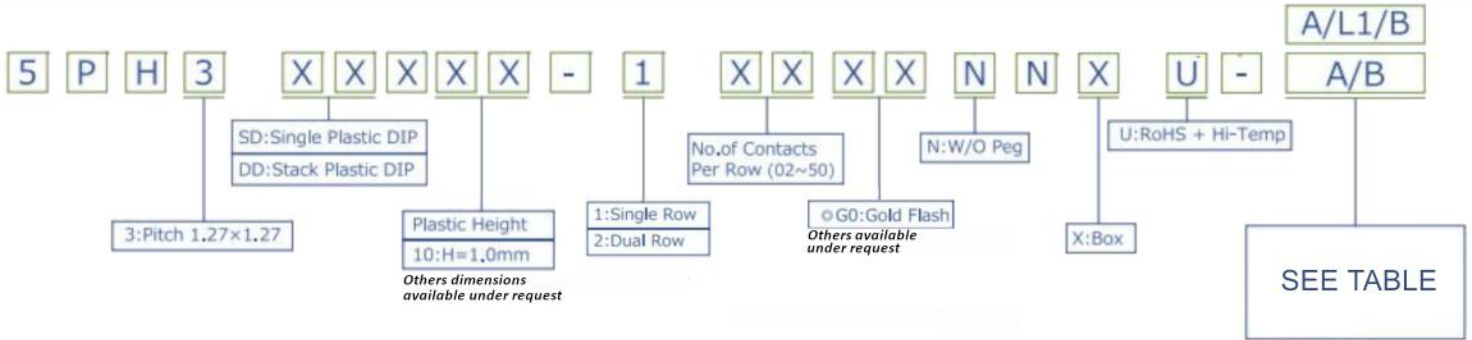
+ SMD, male, double row, right angle



Recommended PCB Layout
(PCB TOLERANCE ± 0.1)

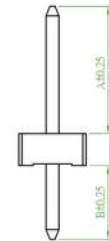
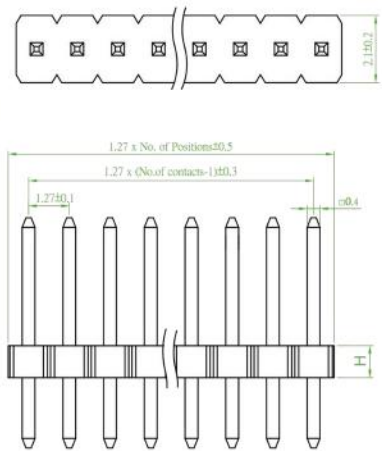
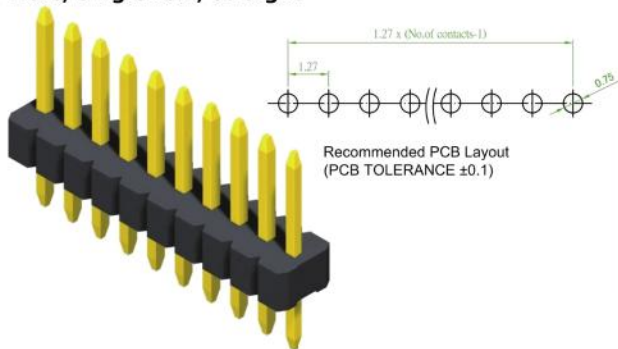


SERIE: 5PH3MRA-2



⊙: Standard Recommend
Tube package is not available for under 1*5 & 2*5 pin counts

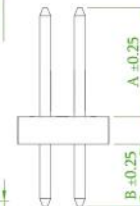
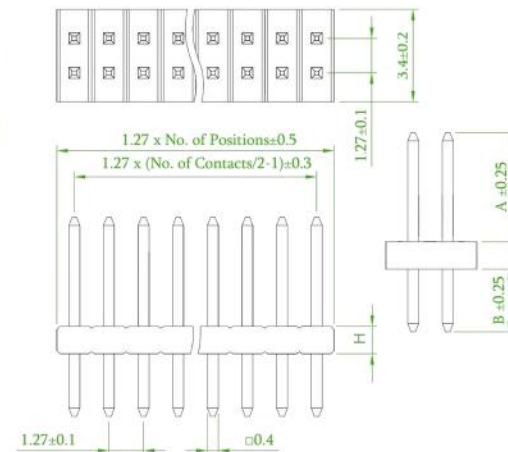
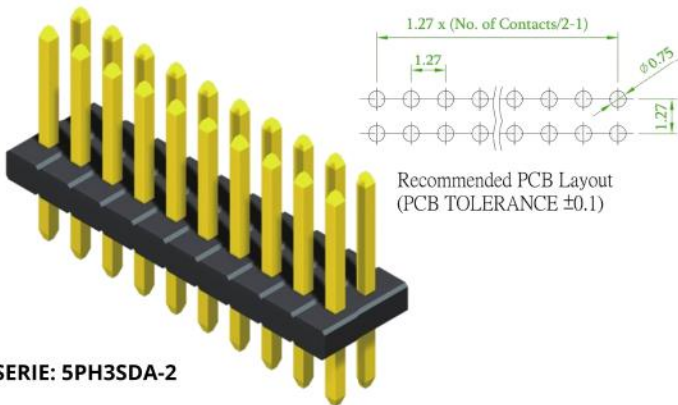
+ PTH, male, single row, straight



DIMENSIONS	
A	B
4mm	2,3mm

SERIE: 5PH3SDA-1

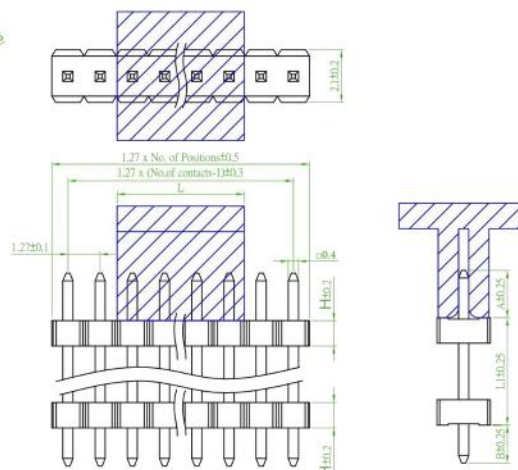
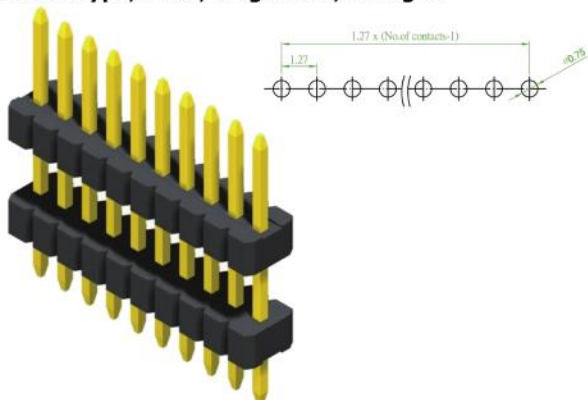
+ PTH, male, double row, straight



DIMENSIONS	
A	B
4mm	2,3mm

SERIE: 5PH3SDA-2

+ PTH, stack type, male, single row, straight

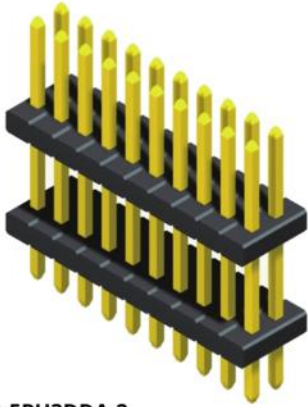


DIMENSIONS		
A	L1	B
4mm	4mm	2.3mm
	5mm	
	6mm	
	8mm	
	10mm	

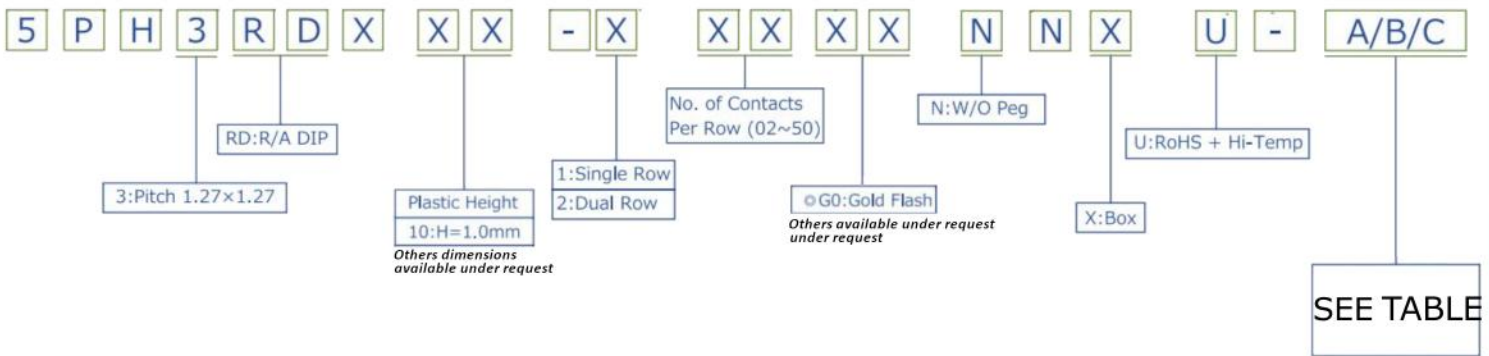
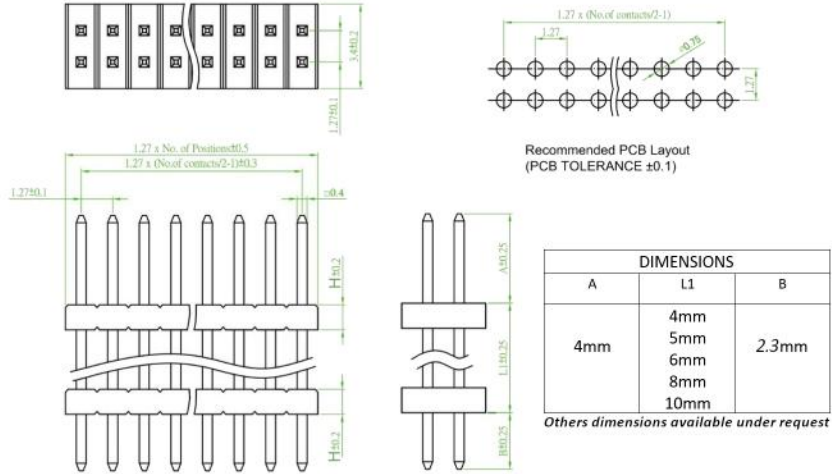
Others dimensions available under request

SERIE: 5PH3DDA-1

+ PTH, stack type, male, single row, straight

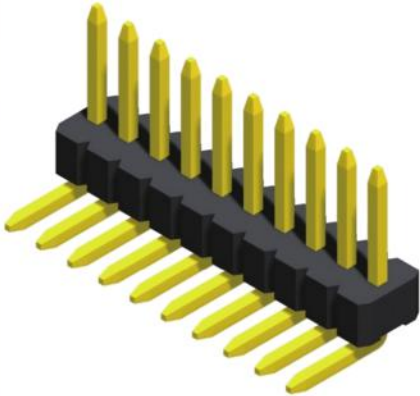


SERIE: 5PH3DDA-2

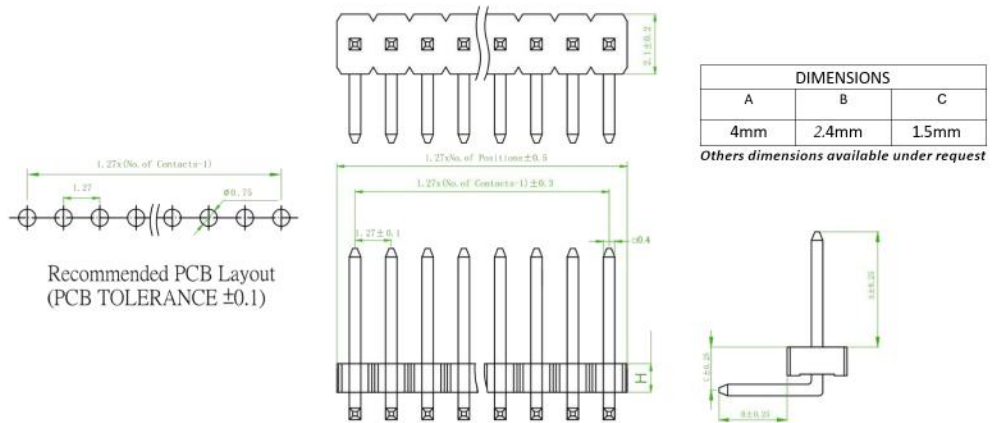


\odot : Standard Recommend
 Tube package is not available for under 1*5 & 2*5 pin counts

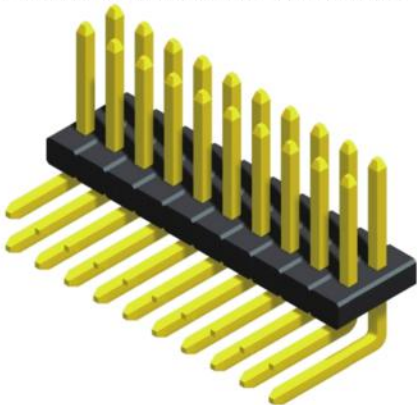
+ PTH, male, single row, right angle



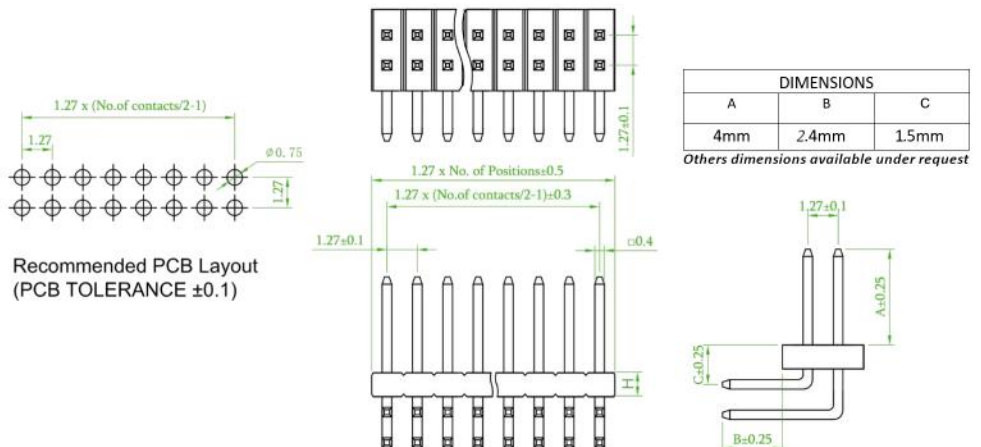
SERIE: 5PH3RDA-1



+ PTH, male, double row, right angle



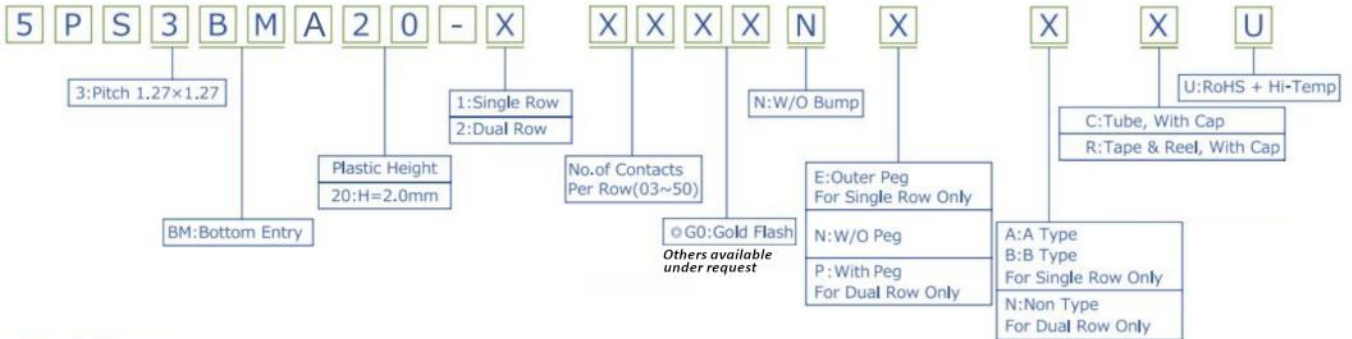
SERIE: 5PH3RDA-2



1.27x1.27mm pitch PCB Pin Headers

FEATURES:

- Current rate: 1 A
- Insulation resistance: 1000 MΩ Min.
- Contact resistance: 20 MΩ Max.
- Dielectric voltage: 500V AC for 1 minute
- Operating temperature: -40°C ÷ +105°C

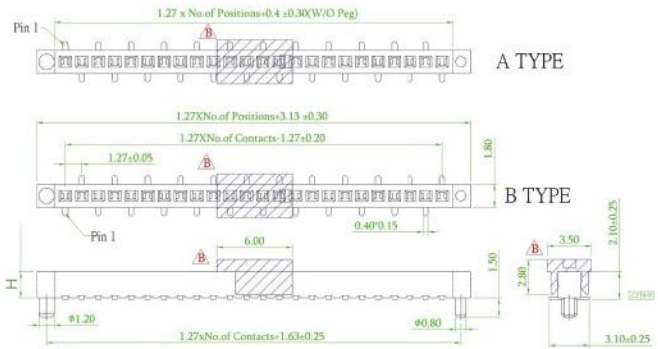
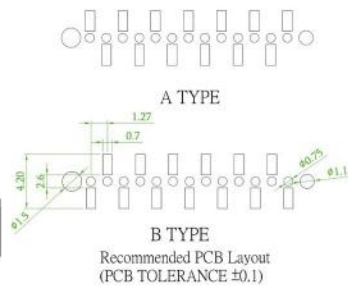


⊙: Standard Recommend
 Tube package is not available for under 1*5 & 2*5 pin counts

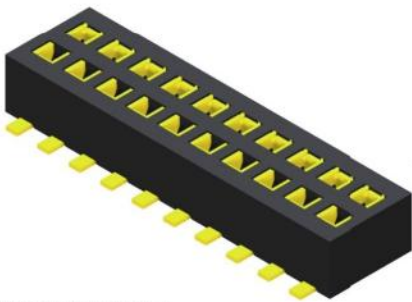
+SMD, female, single row, straight, BOTTOM ENTRY



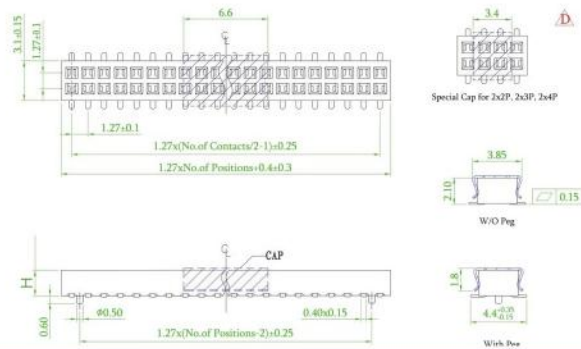
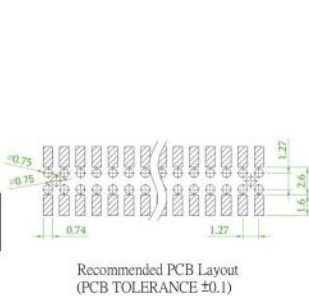
SERIE: 5PS3BMA-1



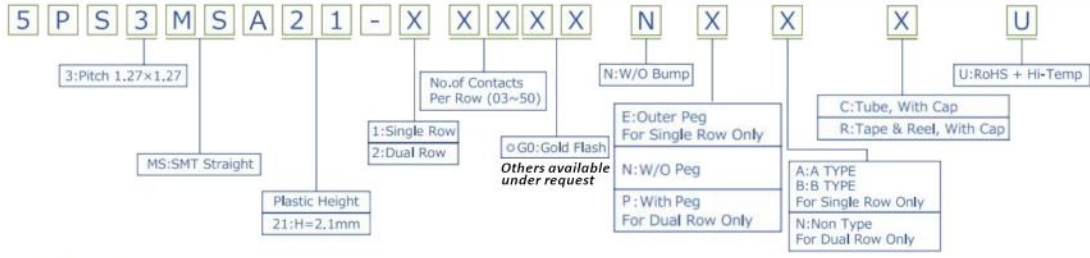
+SMD, female, double row, straight, BOTTOM ENTRY



SERIE: 5PS3BMA-2

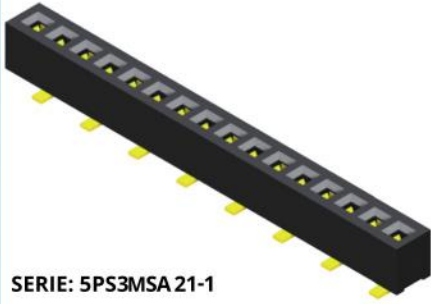


NOTE/NOTES

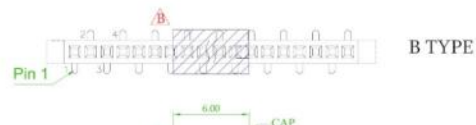
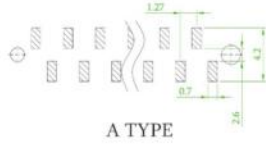


Standard Recommend
Tube package is not available for under 1*5 & 2*5 pin counts

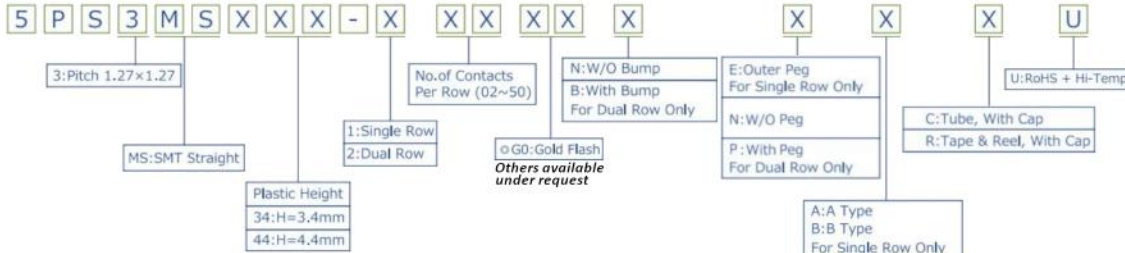
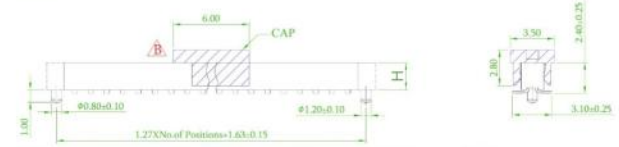
+SMD, female, single row, straight



SERIE: 5PS3MSA21-1

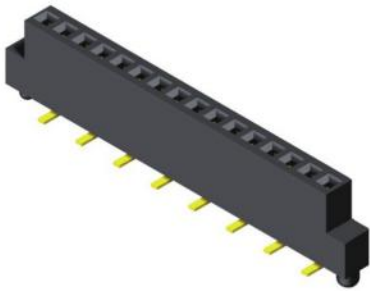


Recommended PCB Layout
(PCB TOLERANCE ±0.1)

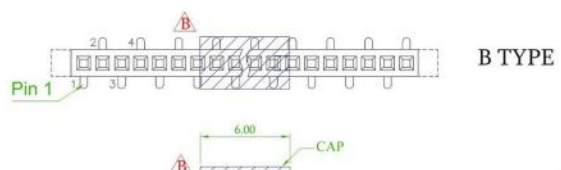
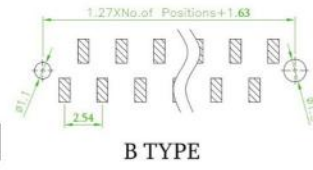
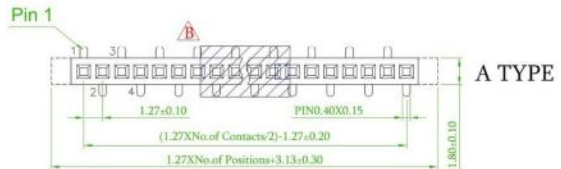
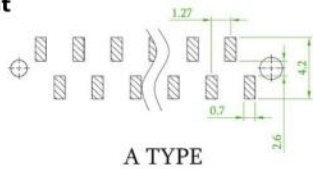


⊙: Standard Recommend
Tube package is not available for under 1*5 & 2*5 pin counts

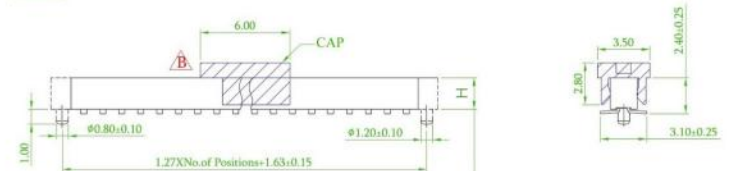
+SMD, female, single row, straight



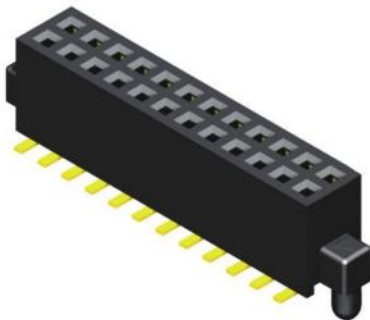
SERIE: 5PS3MSA-1



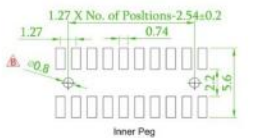
Recommended PCB Layout
(PCB TOLERANCE ±0.1)



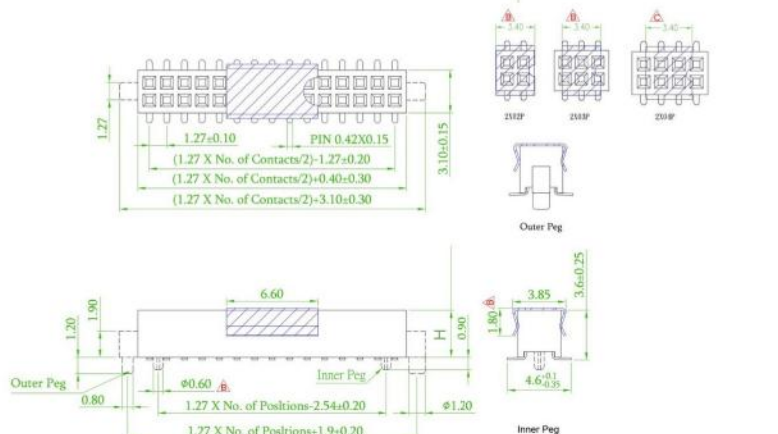
+SMD, female, double row, straight

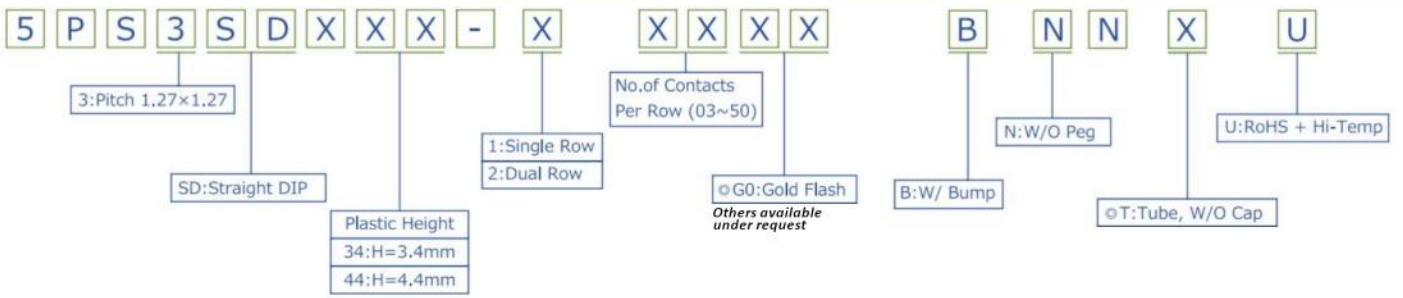


SERIE: 5PS3MSA-2



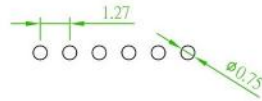
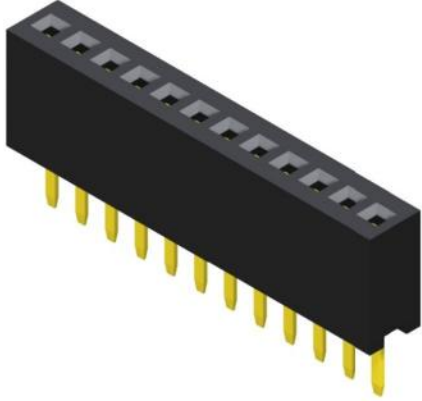
Recommended PCB Layout
(PCB TOLERANCE ±0.1)



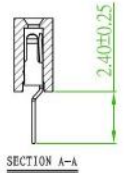
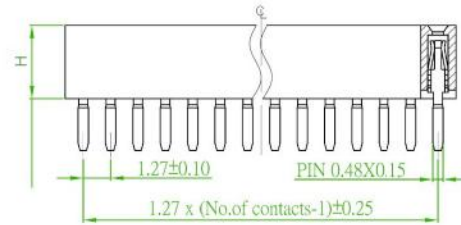
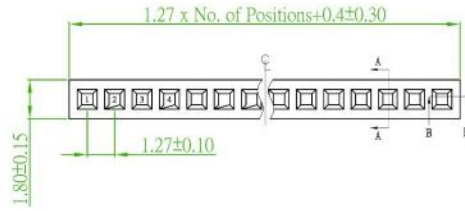


⊙: Standard Recommend
 Tube package is not available for under 1*5 & 2*5 pin counts

+PTH, female, single row, straight

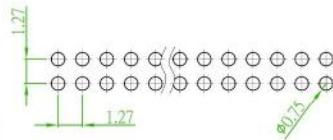
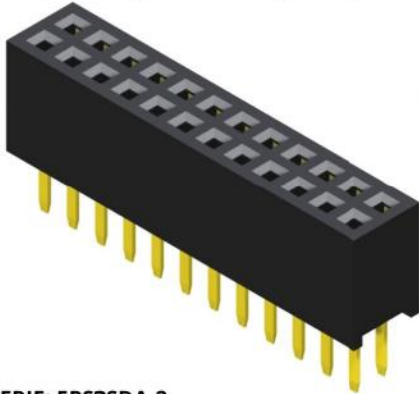


Recommended PCB Layout
 (PCB TOLERANCE ±0.1)

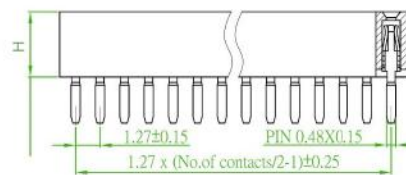
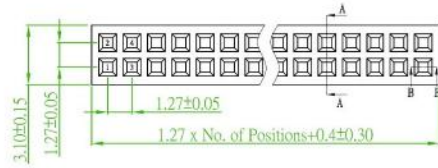


SERIE: 5PS3SDA-1

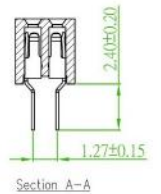
+PTH, female, double row, straight



Recommended PCB Layout
 (PCB TOLERANCE ±0.1)



Section B-B



SERIE: 5PS3SDA-2

NOTE/NOTES

.....

.....

.....

.....

.....

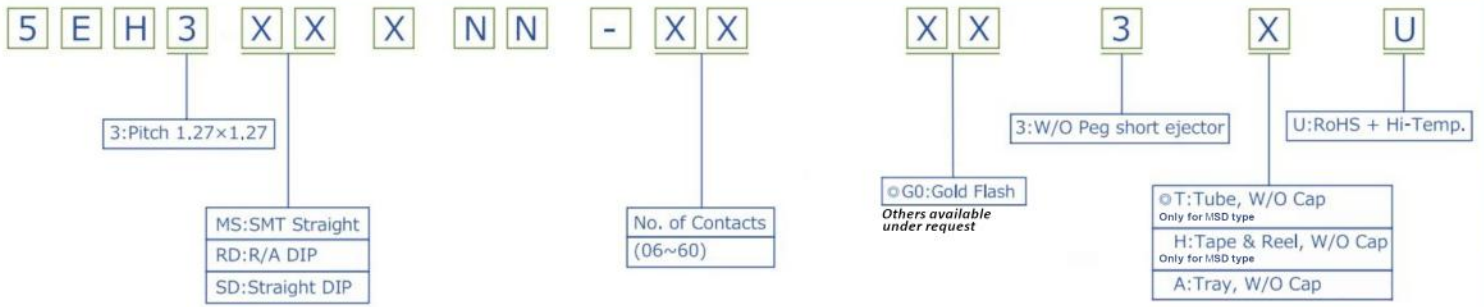
.....

.....

.....

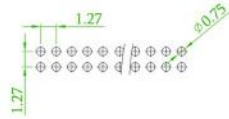
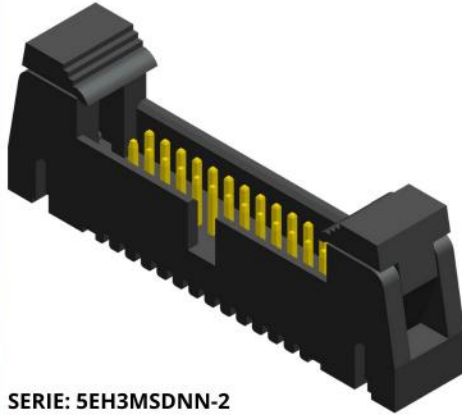
.....

.....



Standard Recommend
Tube package is not available for under 1*5 & 2*5 pin counts

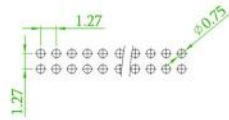
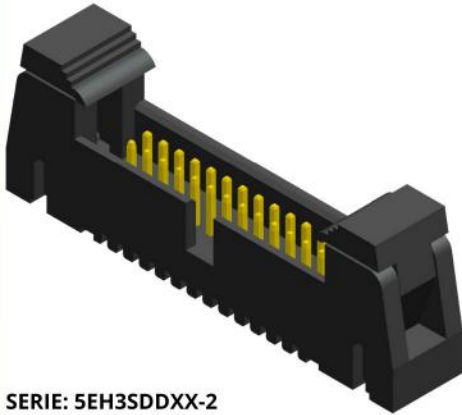
+ SMD, male, double row, straight



Recommended PCB Layout
(PCB TOLERANCE ±0.1)

SERIE: 5EH3MSDNN-2

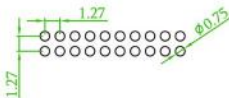
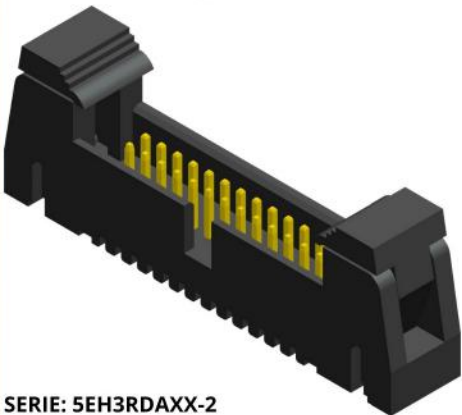
+ PTH, male, double row, straight



Recommended PCB Layout
(PCB TOLERANCE ±0.1)

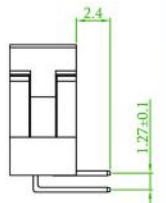
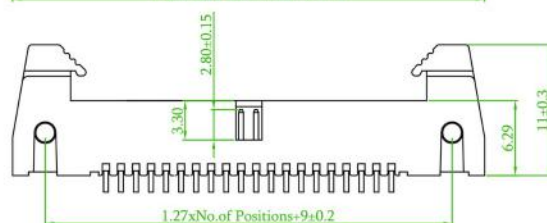
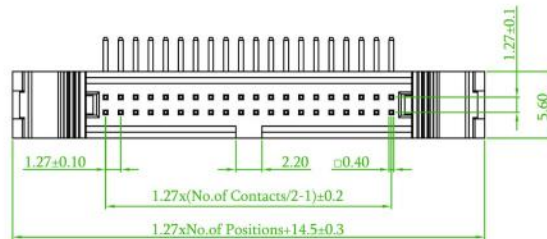
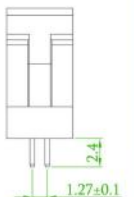
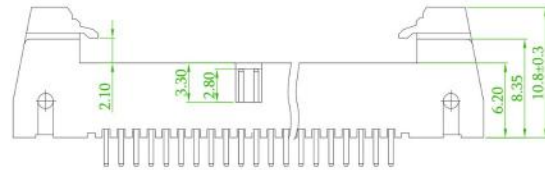
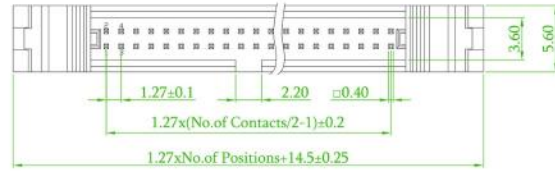
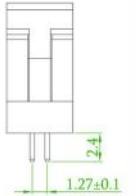
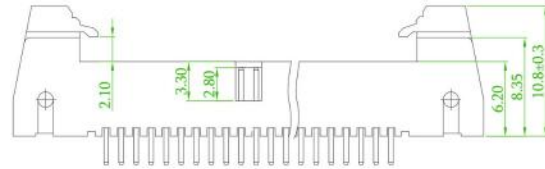
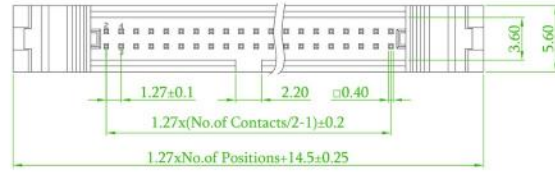
SERIE: 5EH3SDDXX-2

+ PTH, male, double row, right angle



Recommended PCB Layout
(PCB TOLERANCE ±0.1)

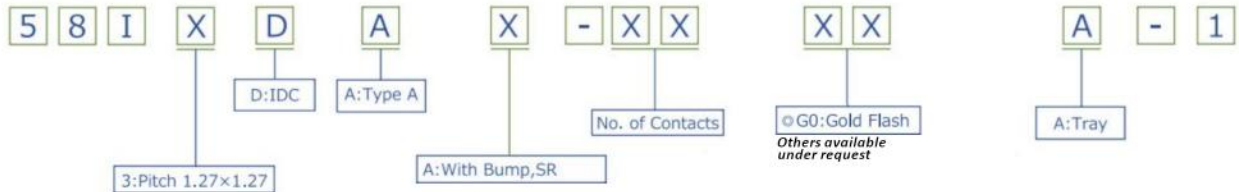
SERIE: 5EH3RDAXX-2



DIP PLUG Connectors, Pitch: 1.27x1.27mm

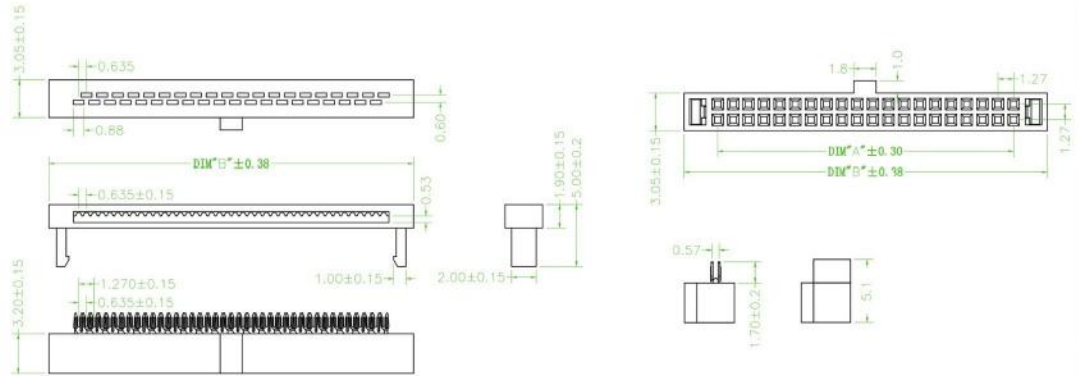
FEATURES:

- Current rate: 1 A
- Insulation resistance: 1000 MΩ Min.
- Contact resistance: 20 MΩ Max.
- Dielectric voltage: 500V AC for 1 minute
- Operating temperature: -40°C ÷ +105°C

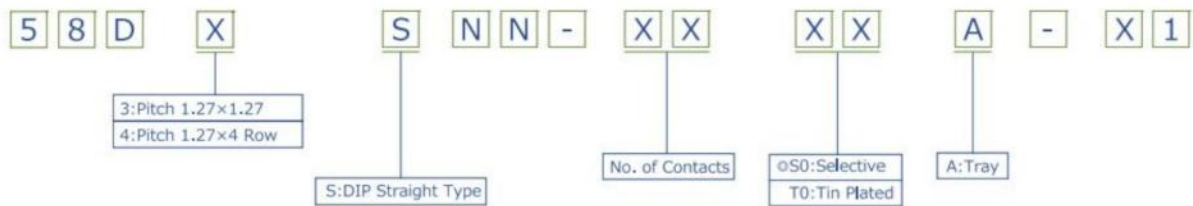


◉: Standard Recommended

+PTH, female, double row, straight

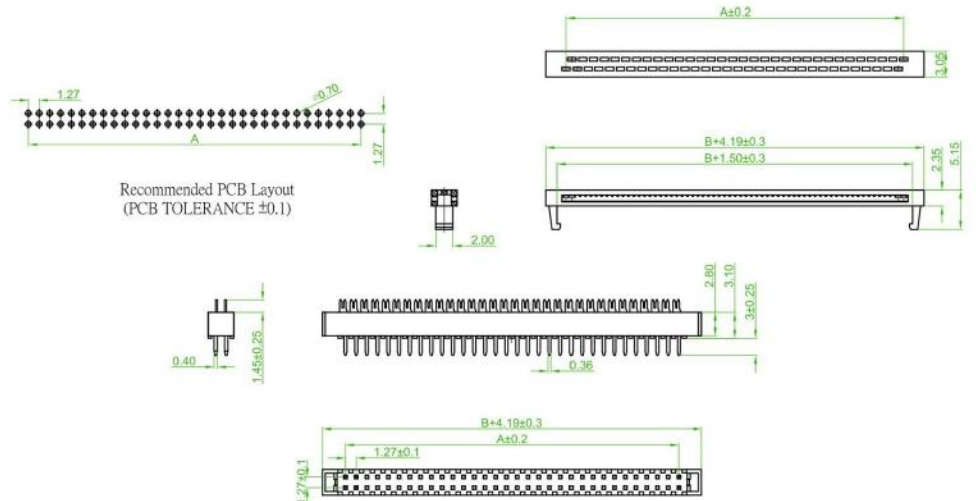
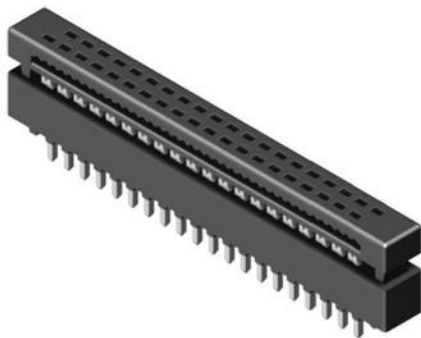


SERIE: 58I3DAB-XX



◉: Standard Recommended

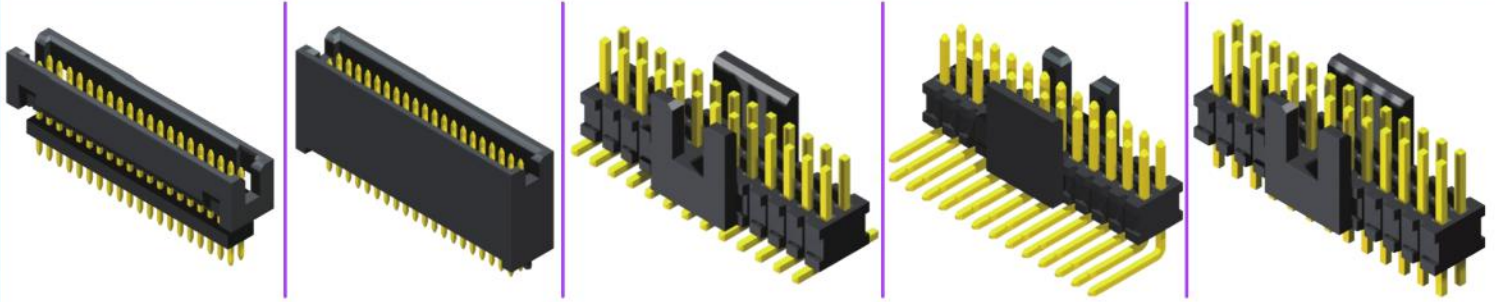
+PTH, female, double row, straight



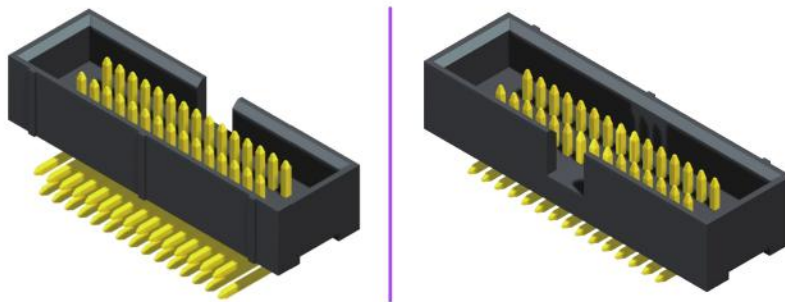
SERIE: 58D3SNN-XX

Other series available under request :

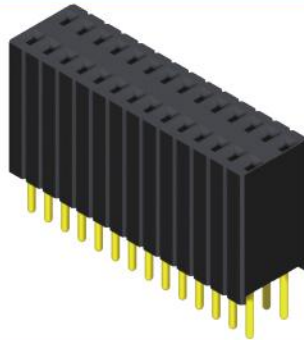
Box Header, pitch: 1.27x1.27mm



Box Header, pitch: 1.27x2.54mm



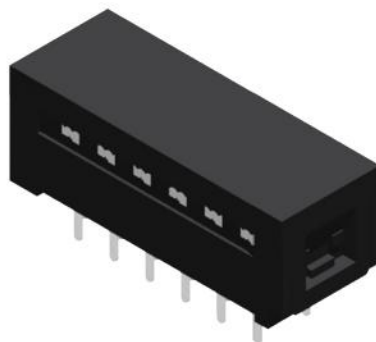
Female Header, pitch: 1.27x2.54mm



Ejector Header, pitch: 1.27x2.54mm



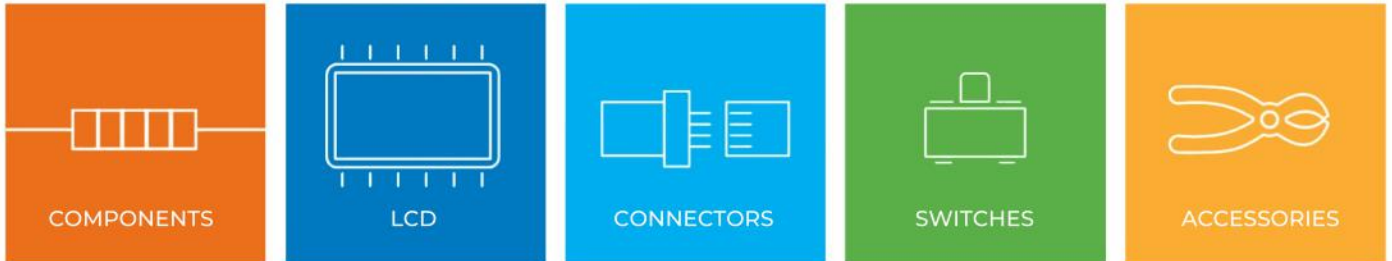
DIP PLUG, pitch: 1.27mm



NOTE/NOTES

A series of horizontal dashed lines for writing notes.

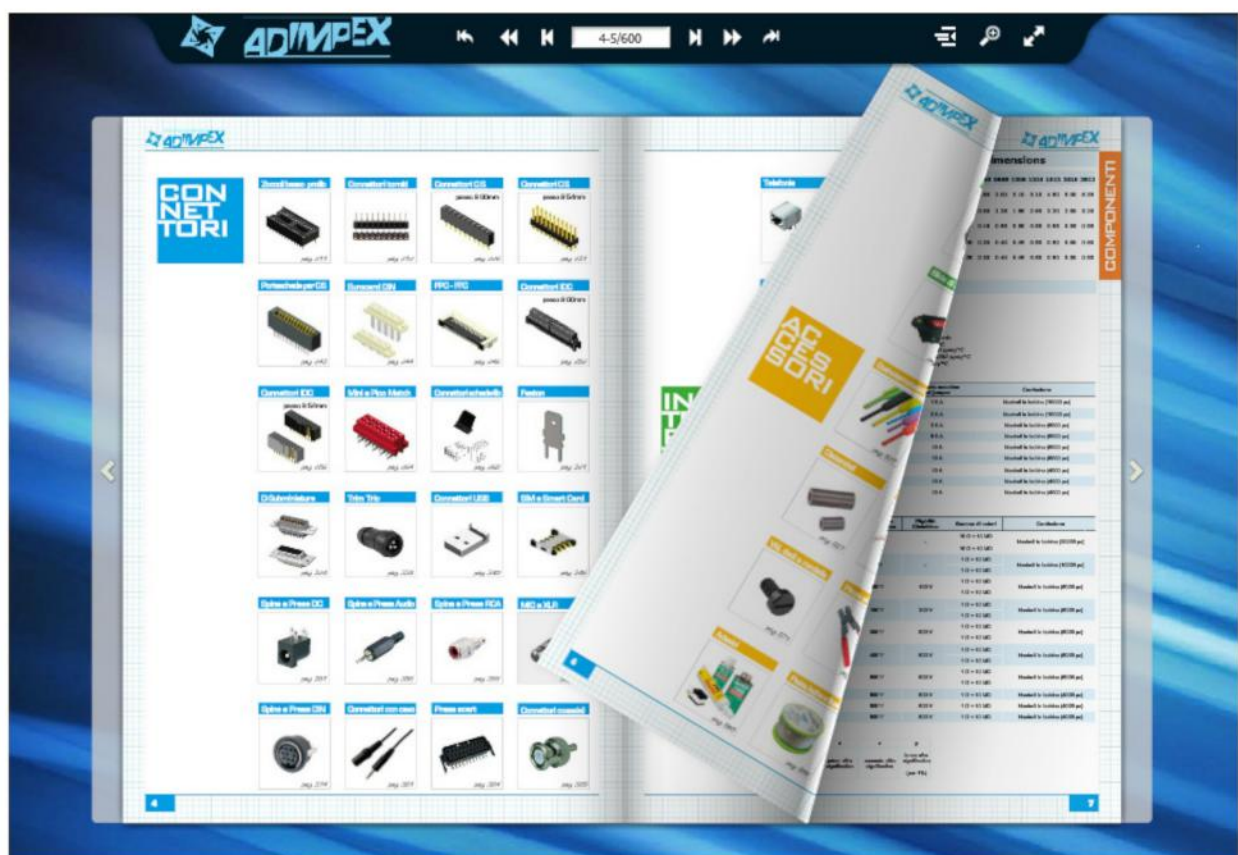
WE, EVEN ARE:



VISIT OUR WEBSITE

WWW.ADIMPEX.IT

TO CONSULT OUR GENERAL CATALOGUE 8th EDITION



WHERE WE ARE

Our offices are in *via Adriatica 17/C, 60022 Castelfidardo (AN), Italy*



**Collaboriamo con i
migliori brand di
settore.**

Siamo distributori ufficiali di realtà leader nella produzione di componenti elettronici a livello locale e internazionale.



Connectors Connect the World
Quality Connect You & Me.

