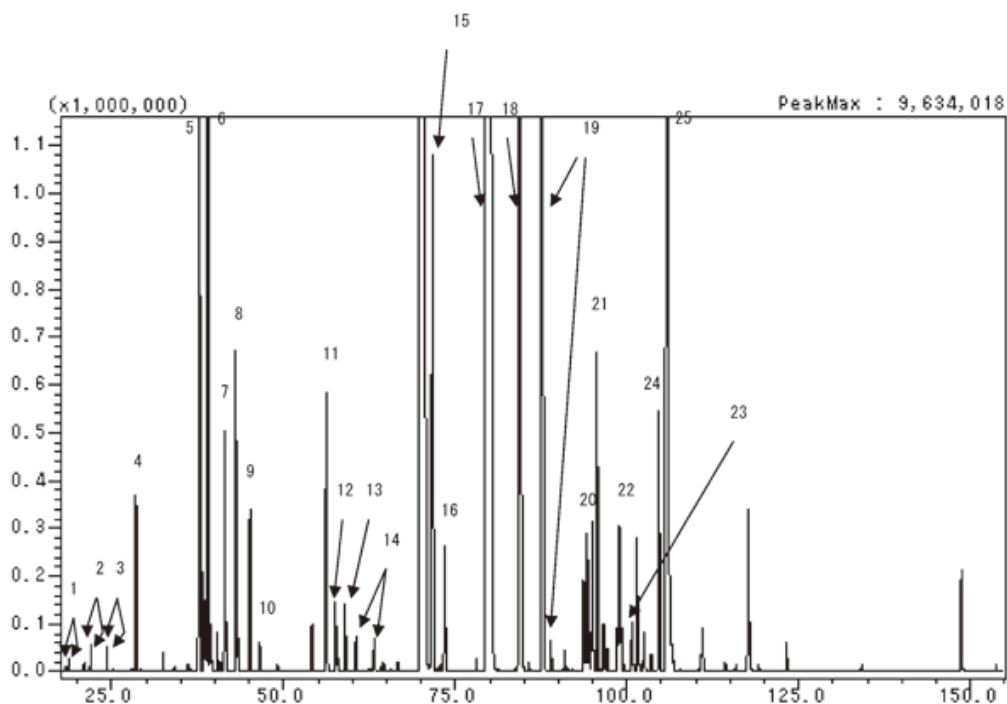


Lavender

Data No. GA069-0000



System : GC/FID
 Column : InertCap CHIRAMIX
 0.25mmI.D.×30m df=0.25µm
 Column Temp. : 50°C (3min) → 0.7°C/min → 180°C (40min)
 Detection : FID
 Sample : Lavender oil

Solutes :

1. α -Thujene
2. α -Pinene
3. Camphere
4. β -Pinene
5. β -Ocimene
6. β -Ocimene
7. 1,8-Cineolel
8. 3-Octanon
9. Hexyl acetate
10. Terpinolene
11. 1-Octen-3-yl acetate
12. 3-Octanol
13. 1-Octen-3-ol
14. (trans/cis)-Linalool oxid
15. (+/-)-Linalool
16. Hexyl butyrate
17. Linalyl acetate
18. Geranyl acetate
19. (+/-)-Terpinen-4-ol
20. (+/-)-Borneol
21. (+/-)- α -Terpineol
22. α -Santalene
23. α -Bergamotene
24. Neryl acetate
25. Caryophyllene