

# Super Trade Deals

Supporting you with the best brands for over 45 years



- » CCTV
- » Alarms
- » Intercoms
- » Lighting
- » Electrical
- » Solar
- » Power



Don't settle for underpowered cameras on-site

## 12VDC 4G Professional AI Security Cameras

- Add professional AI cameras anywhere with 12VDC power
- Add AI auto tracking PTZs, siren & strobe warning lights
- Add PTZ dome or 180° camera, or BYO 12VDC camera
- Customised for plug and play, monitor on phone/tablet/PC
- CCTV grade microSD card for days of footage storage
- Industrial 4G router with Telstra SIM or BYO SIM card
- Includes 12VDC 5A PSU, 10m lead, pole/wall mount kits

**VSIPKIT-P4G (4MP PTZ Dome Camera)**

**VSIPKIT-1804G (8MP 180° Dome Camera)**

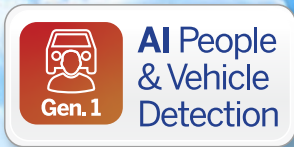


## Available from your local wholesaler

Ask your local stockist for VIP Vision, ENSA, Watchguard, AVOL, Securview and our other great brands. Wholesale customers only. Product range and availability may be subject to change without notice, only while stocks last. Release 526.

# Ultimate AI CCTV value

## Professional security camera packages



### Watchguard LA Series 6MP AI CCTV Packages

#### LA Series AI CCTV Kits with 4 Cams

- 1 x Watchguard 4 or 8 channel PoE NVRs
- 4 x AI human/vehicle 6.0MP detection turrets
- Network cable pullbox/looms sold separately

**4 Channel Kit**

**NVRKIT-LA460-4C  
(4CH, 4CAMS)**

**8 Channel Kit**

**NVRKIT-LA860-4C  
(8CH, 4CAMS)**

#### 6.0MP LA-Series AI Turret Camera

- AI human/vehicle detection via tripwire & intrusion rules, or smart motion detection
- Stream 6.0MP@20fps (3072 x 2048)
- 2.8mm lens (105°), 30m infrared
- Starlight, true WDR 120dB
- Optional junction box & wall mount

**Add Cams or Bracket**

**VSIPL-6DIRG-I  
(6MP, Wide Angle)**  
**VSBKTB204W (wall mount)**  
**VSBKTA139 (back box)**





# NVRs for every job size

## Network Video Recorders up to 64CH



### Compact AI Series 4 - 16 Channel NVRs

- Record beyond Ultra HD up to 16.0MP (4920 x 3264)
- AI human/vehicle motion detection by NVR up to 4 channels
- AI human/vehicle tripwire/intrusion by NVR up to 2 channels
- AI face recognition and AI face database up to 1 channel
- Supports ANPR and people counting cameras
- Decodes 4CH@4K/25fps, up to 256Mbps network bandwidth
- Up to 2 x SATA ports for up to 20TB HDD storage

- NVR4COM-I (4CH, 4 PoE, 1 HDD)**
- NVR8COM-I (8CH, 8 PoE, 1 HDD)**
- NVR16COM-I (16CH, 16 PoE, 2 HDD)**



### Pro AI Series 8 - 64 Channel NVRs

- Record beyond Ultra HD up to 32.0MP (4920 x 3264)
- AI human/vehicle motion detection by NVR up to 8 channels
- AI human/vehicle tripwire/intrusion by NVR up to 4 channels
- AI face recognition & AI face database up to 2 channels
- Supports ANPR, fisheye dewarp\*, people counting cameras
- Decodes up to 8CH@4K/25fps, up to 384Mbps bandwidth
- Up to 8 x SATA (16TB/bay), ePoE, alarm I/O, HDMI/VGA, eSATA
- \*Some features differ for NVR8PRO-I, see datasheet for detail

- NVR8PRO-I (8CH, 2 HDD, PoE)**
- NVR16PRO16P-I3 (16CH, 4 HDD, PoE)**
- NVR32PRO16P-I3 (32CH, 4 HDD, 16 PoE)**
- NVR32PRO-I3 (32CH, 4 HDD)**
- NVR64PRO-I3 (64CH, 8 HDD)**



## Surveillance grade storage

Add up to 20TB surveillance grade HDD storage for reliability in professional security installations





# AI CCTV + Security Lighting

## Professional Series IP cameras



**4.0**  
MEGAPIXEL

**6.0**  
MEGAPIXEL

**4K**  
ULTRA HD



### VIP Vision Gen. 3 Pro AI Series Cameras

#### Combined Infrared & White LED Spotlights

- Available in 3 resolutions: 4.0MP, 6.0MP and 8.0MP/4K models
- Fixed lens or motorised varifocal lens bullet/dome/turrets
- Discreet infrared at night; AI person/vehicle detection turns on white LED spotlights to deter intruders & capture colour footage
- AcuPick search finds person/vehicle subjects across all cameras
- IP67 rated and professional metal chassis across range

Models available in 4MP, 6MP or 8MP

- VSIPP- 4 / 6 / 8 BIRG-I3 (Fixed Lens Bullets)
- VSIPP- 4 / 6 / 8 DIRD-I3 (Fixed Lens Domes)
- VSIPP- 4 / 6 / 8 DIRG-I3 (Fixed Lens Turrets)
- VSIPP- 4 / 6 / 8 BIRMG-I3 (VF Lens Bullets)
- VSIPP- 4 / 6 / 8 DIRMD-I3 (VF Lens Domes)
- VSIPP- 4 / 6 / 8 DIRMG-I3 (VF Lens Turrets)

### VIP Vision AI Active Deterrence Cameras

#### Deter Intruders with Siren, Red/Blue Strobe

- Available in standard wide angle or 180° panoramic lens models
- Siren & red/blue LED light & customisable speaker message
- Customisable siren tones or voice messages & two way talk
- Trigger alerts for AI functions, including people and vehicles
- IP67 rated and professional metal chassis across range



**6.0**  
MEGAPIXEL

**4K**  
ULTRA HD



#### Wide Angle Turret Domes

- VSIPP-6DG-ID4 (6.0MP)
- VSIPP-8DG-ID4 (8.0MP)
- 8.0MP available in Black

#### 180° Panoramic Cameras

- VSIPP-8BD-ID3 (Bullet)
- VSIPP-8DD-ID3 (Turret)
- Models available in Black



# Control and Capture

## Specialty Series IP cameras

### VIP Vision MultiVision Panoramic + PTZ

#### Combo PTZ/Panoramic Dome Camera

- Capture entire scenes with panoramic and zoom on detail with PTZ
- Cameras work in tandem to detect and track people and vehicles
- 4.0MP 25x zoom PTZ; 8.0MP (2 x 4.0MP) panoramic overview
- Deterrence features blue/red strobe, siren and white spotlight
- Requires 2 channels when recording to a network video recorder
- IP67 metal chassis and PoE+ input power; incl. right angle bracket

**VSIPPTZ-4P8X (incl. wall mount bracket)**



AI Auto Tracking



AI People & Vehicle Detection



### VIP Vision AI Auto Tracking PTZs

#### Available in 2MP, 4MP and 4K/8MP

- 25x and 32x optical zoom, endless 360° panning, -15°~90° tilt
- AI people & vehicle detection (tripwire and intrusion rules)
- Search playback by person and vehicle detection events
- AI PTZ auto tracking detects and tracks people & vehicles
- Stream up to 8.0MP at 25fps (4.0MP@25fps, 2.0MP@50fps)
- Incl. bracket for wall mount; ceiling drop mount sold separately

**VSIPPTZ-2IRP-I2**  
(2.0MP, 25x Zoom)

**VSIPPTZ-4IRP-I2**  
(4.0MP, 32x Zoom)

**VSIPPTZ-8IRP-I2**  
(8.0MP, 25x Zoom)



AI Auto Tracking



AI People & Vehicle Detection



#### 4MP Compact AI PTZ

- Small size Ø168 x 171mm
- 25x lossless optical zoom
- 4.0MP, 5~125mm zoom lens
- 100m maximum distance
- AI people & vehicle detection (motion; tripwire/intrusion)
- IP67 & IK10 vandal resistant



**VSIPPTZ-4IRC-I**  
(4.0MP, 25x Zoom)



#### 4MP Number Plate Recognition AI Bullets

- Standard & long range models
- Allow/blocklist database for gate control and auto-entry
- Daily plate logs & email report
- IP67 rated metal chassis

**VSIPNP-4BIRM-I3**  
(Standard Lens)

**VSIPNP-4BIRM-I3-Z**  
(Zoom Lens)

# Quick to Deploy Security

## Watchguard wireless alarm systems



### Watchguard D1 Series 4G / WiFi Alarm System

- Supports up to 150 wireless peripherals (6 sirens, 64 keyfobs)
- WiFi (2.4GHz) and 4G connectivity for app control & alerts
- 433MHz, code hopping, AES128 encrypted wireless tx
- Utilise app to arm/disarm, monitor & check battery status
- Calls and/or SMS up to 5 phone numbers on alarms
- Built-in lithium battery up to 12hrs standby uptime
- Wide range of additional accessories sold separately  
\*SIM card sold separately

**ALMKIT-D1 (Alarm hub, reed switch, PIR, & keyfob)**



### Wireless Accessories for Watchguard D1 Series 4G/WiFi Alarm System

- Remote Control Keyfob (-RC), Panic Button (-PNB), Smoke Alarm (-SMK), Door & Window Sensor (-RSW)
- Outdoor Strobe & Siren (-SRX), PIR Detector (-PIR), Wireless Control Keypad (-KPD), Indoor Siren (-SIR)

ALM-D1-RC ALM-D1-PNB ALM-D1-SMK ALM-D1-RSW ALM-D1-SRX ALM-D1-PIR ALM-D1-KPD ALM-D1-SIR

# For Homes & Apartments

## Residential & commercial IP intercoms



### Residential Complete PoE IP Intercom Kits



#### J Series 1.0MP/HD Intercom Kit

- Includes door station, indoor monitor & PoE switch
- 1MP intercom door station, 7" black indoor monitor (white optional) and 4-port 100M PoE switch
- Unlock via NFC card; view & unlock via app

**INTIPRKITJ2 (Door station, monitor & PoE switch)**

#### G Series 2.0MP/Full HD Intercom Kit

- Includes door station, indoor monitor & PoE switch
- 2MP intercom door station, 7" white indoor monitor (black optional) and 4-port 100M PoE switch
- Flush or surface mount box; view & unlock via app

**INTIPRKITG-P (Door station, monitor & PoE switch)**

*Compatible  
with above  
monitors*



#### Keypad Intercom Door Stations

- Add keycode unlock or keycode room dialling
- 2.0MP door stations, for apartments (calls individual dwellings) & homes (calls all monitors in group)
- Choose flush or surface mount box (sold separately)

**INTIPRDSD2 (Home) INTIPADSD2 (Apartment)**



#### A Series 4-Wire Analogue Intercom Kit

- Upgrade intercoms using pre-existing 4-wire cabling.
- 1.3MP surface-mount analogue door station and 7" touchscreen analogue indoor monitor
- No remote viewing or smartphone compatibility

**INTKIT-A1 (Door station and monitor)**

# Deliver a Great Installation

## VIP Vision data cabinets & networking



### SECCAB Vertical Wall Mount Security Cabinet

- Lockable wall mounted storage for neat installations
- Fit up to 24" monitor, with 50/75/100 VESA mounts\*
- Capacity: 2RU, 240~480mm width, 465mm depth
- Integrated 4 x outlet powerboard & 2 x cabinet locks, 2x fans
- Cable management knockouts from all cabinet sides



SECCAB (Monitor and NVR sold separately)



### Compact 10" and 19" Data Cabinets

- 10" in 250mm depth, in 6RU and 9RU
- 19" in 300mm depth, in 4RU and 6RU
- Lockable, tempered glass, ships assembled
- Cabinets available up to 42RU size for all jobs
- Shelves and other accessories available



RMC-B6U250W (10" 6U)    RMC-B4U300W (19" 4U)  
 RMC-B9U250W (10" 9U)    RMC-B6U300W (19" 6U)



### Fast Hi-PoE Switches

Uplink: 100M (SWA4), 1000M (SWA8G)  
 30W per port & 1 x HiPoE port 60W

VSPOE-SWA4F (4 port)  
 VSPOE-SWA8G (8 port)



Gigabit  
PoE

### Gigabit Hi-PoE Switch

8 x 1000M gigabit PoE ports  
 30W per port & 1 x HiPoE port

VSPOE-SWB8G (8 port)

DIN rail  
mount



### Fast Hi-PoE Switches

1000M uplink port & SFP uplink ports  
 30W per port & 1 x HiPoE port 60W

VSPOE-SW4H (4 port)  
 VSPOE-SW8H (8 port)

**FLASHVIEW™**

# 4K Ultra HD Performance

## Professional displays & accessories



### Professional Flashview Displays & Accessories

#### CCTV Grade Monitors

- Available in 22", 24" and 27"
- Made for 24/7 CCTV operation
- 22" & 24" 1080p (1920 x 1080)
- 27" 4K / UHD (3840 x 2160)

**LCDFL22G2 (22" 1080p)**

**LCDFL24G2 (24" 1080p)**

**LCDFL27U (27" 4K)**

#### HDMI Extenders + KVM

- Extend HDMI over CAT5e/6 data cable
- Supports 1080p or 4K Ultra HD
- Transmit up to 50m or 100m (-XK)
- Extends keyboard video mouse (-XK)

**HDMI-XK (4K Extender & KVM)**

**HDMI-EXT50M (1080p Extender)**

#### HDMI Splitters

- Splits single HDMI to 2 displays
- 4K resolution support
- Incl 5VDC PSU

**HDMI-SPL2P3 (HDMI Splitter)**

## Transmit 4K HDMI up to 50m

### Highest quality fibre optic HDMI cables from Flashview



#### 4K HDMI Cables

- Available in 1m, 2m, 5m, 10m, 20m

**HDMI-C Series (Copper)**

**HDMI-F Series (Fibre Optic)**



#### Easy-Run 4K Fibre HDMI

- Detachable connector for easy wall runs
- Available in 10m, 20m, 30m, 50m

**HDMI-FC Series (Fibre Optic)**



#### Low Profile Display Brackets

- Wide range to suit monitors from 22" - 70"
- Fits to standard VESA mounts of displays

**LCDBKT-A Series (Wall & Ceiling)**

# High Power LED Lighting

## Professional flood lighting for projects



### ENSA™

#### LFL-B2 Series Pro LED Flood Lights

- Superb 150lm/W luminous efficacy, >70 CRI
- Built with high performance Lumiled LEDs
- Wide 120° beam angle, circular light distribution
- 5000K cool white colour temperature
- Outstanding 50,000hrs rated LED lifespan
- Aluminium & toughened glass construction
- IP65 weather rated, 5 year warranty

**LFL-B80-C2**  
(80W, 5000K)

**LFL-B100-C2**  
(100W, 5000K)

**LFL-B150-C2**  
(150W, 5000K)

**LFL-B200-C2**  
(200W, 5000K)



### ENSA™

#### LFL-G2 Series: High Power LED Floods

- Superb 160lm/W luminous efficacy, >80 CRI
- Available in 240W, 360W, 480W, 720W & 960W
- 180° adjustable U-bracket to direct luminaires
- Incredible 100,000hrs rated LED lifespan
- 5000K cool white colour temperature
- Wide 60°x100° beam angle models (30° optional)
- IP67 weather rated; ideal for sporting grounds

**LFL-G240-C2**  
(240W, 38,400lm)

**LFL-G360-C2**  
(360W, 57,600lm)

**LFL-G480-C2**  
(480W, 81,600lm)

**LFL-G720-C2**  
(720W, 115,200lm)

**LFL-G960-C2**  
(960W, 153,600lm)



### ENSA™

#### LFL-F Series High Power LED Floods

- Available in 480W, 720W and 960W models
- Lumileds LEDs exceptional light output (+165lm/W)
- 60° beam angle, >80 CRI, 6500K cool white, IP66
- Customise lighting for large areas perfectly with 360° rotate & 140° tilt individually adjustable LED modules
- Ask us about lighting simulation & project assistance

**LFL-F480-C**  
(480W, 79,200lm)

**LFL-F720-C**  
(720W, 118,800lm)

**LFL-F960-C**  
(960W, 158,400lm)

# Superb Efficiency Floods

## Residential floods & sensor lighting



ENSA™

### LFL-B2 Series Pro LED Flood Lights

- Superb 150lm/W luminous efficacy, >70 CRI
- Built with high performance Lumiled LEDs
- Wide 120° beam angle, circular light distribution
- 3000K/5000K warm/cool white colour temp.
- Outstanding 50,000hrs rated LED lifespan
- Aluminium & toughened glass construction
- IP65 weather rated, 5 year warranty

20W

LFL-B20-W2 (3000K)

LFL-B20-C2 (5000K)

30W

LFL-B30-W2 (3000K)

LFL-B30-C2 (5000K)

50W

LFL-B50-W2 (3000K)

LFL-B50-C2 (5000K)



ENSA™

### LFL-C3 Series LED Sensor Flood Lights

- 140lm/W luminous efficacy, >80 CRI
- Effective light distribution with 120° beam angle
- Adjustable PIR detection up to 8m with a 140° arc
- Adjustable on-time delay (5s ~ 5min)
- 5000K cool white, 50,000hrs rated LED lifespan
- 240° adjustable U-bracket & PIR bracket for flexibility
- IP66 weather rated, 3 year warranty

LFL-C20-CS3  
(20W, 2400lm)

LFL-C30-CS3  
(30W, 3600lm)

LFL-C50-CS3  
(50W, 6000lm)

AVOL™

### H Series LED Flood Lighting

- Available in 50W, 100W, 150W and 200W
- 80lm/W light output, 120° wide beam angle
- 6000K cool white colour temperature
- Pre-terminated AC plug, adjustable U-bracket
- Long lifespan LED Lighting: 35,000 hours
- Integrated LED driver for streamlined installation
- Sensor Flood (-CS): 12m arc PIR motion sensor, in 50W

LFL-H50-C  
(50W, 4000lm)

LFL-H100-C  
(100W, 8000lm)

LFL-H150-C  
(150W, 12000lm)

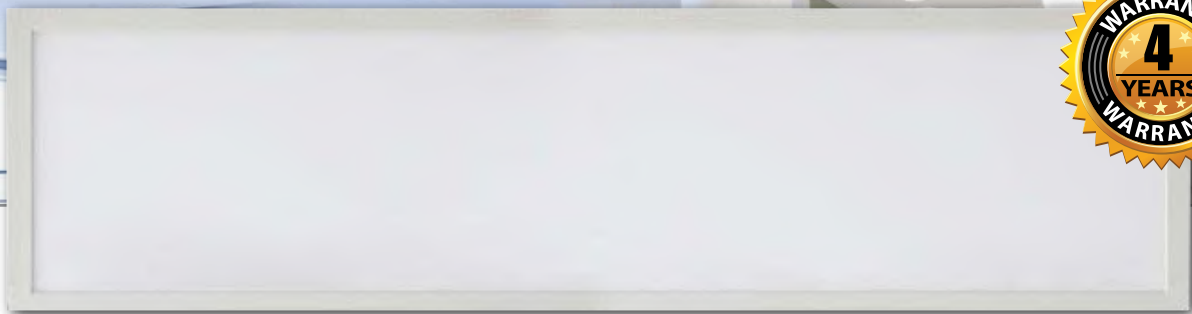
LFL-H200-C  
(200W, 16000lm)

LFL-H50-CS  
(50W, Sensor)



# Commercial LED Lighting

## LED panel lighting & street lighting



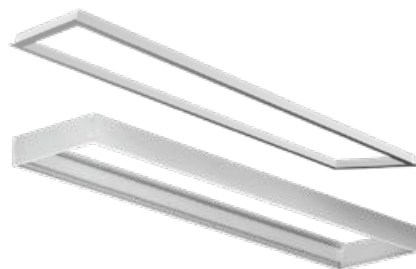
### ENSA™

#### LPL-C Series: LED Panel Lights

- 40W, 4800lm (120lm/W), 110° beam angle
- 5000K cool white colour temperature
- Frosted diffuser, 3 different mounting options
- UGR <22, 300 x 1200mm hole cut size

**LPL-C40-C**  
(40W, 4800lm)

**Mounting Kits**  
**LPL-C-S (Surface)**  
**LPL-C-R (Recessed)**  
**LPL-C-H (Hanging)**



### ENSA™

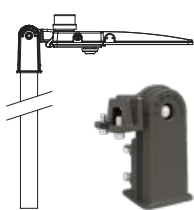
#### LSL-B Series: LED Area/Street Lights

- Built in photocell models for dusk/dawn switching
- Available in 150W and 200W models
- Versatile mounting with 5 adjustable light brackets
- Slip fit, fixed/adjust pole, trunnion & yoke wall mounts
- 135lm/W, 5000K cool white, >70 CRI, 50,000hrs lifespan
- 155 x 85° beam angle, 1~10V / PWM dimmable
- IP66/IK08 weather/vandal rated, 20KV surge protection

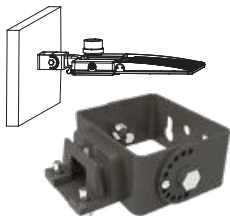


**LSL-B150-CP**  
(150W, 20,250lm)

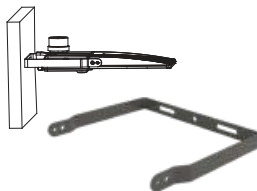
**LSL-B200-CP**  
(200W, 27,000lm)



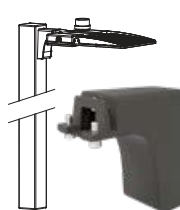
**LSL-BKTS**  
(Slip Fitter)



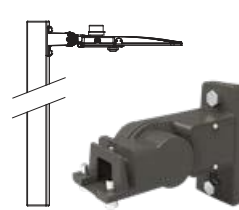
**LSL-BKTT**  
(Trunnion)



**LSL-BKTY100 (150W)**  
**LSL-BKTY200 (200W)**  
(U-Wall Mount)



**LSL-BKTP**  
(Fixed Pole)



**LSL-BKTA**  
(Adjust. Pole)

# Warehouse LED Lighting

## Food grade & general purpose high bays

ENSA™

### LHB-G Series: Adjustable LED High Bays

- **MULTI Power:** 80W, 120W or 150W power adjustable
- **MULTI Beam:** 60°, 90° or 110° beam angle adjustable
- **MULTI CCT:** Warm, natural or cool white adjustable
- High efficiency lighting 170lm/W with 5 year warranty
- Add retrofit motion sensor, configurable via Bluetooth

**LHB-G150-A**  
(150W, Adjustable Temp)



ENSA™

### LHB-F Series: Food Grade LED High Bays

- Available in 100W, 150W & 200W
- High 135lm/W luminous efficacy
- IP69K for pressure cleaning in food prep facilities
- In 4000K & 5700K natural or cool white,
- 120° beam angle wide light distribution
- NSF, ETL, DLC, SAA, IPART, VEET certifications
- No glass, smooth non toxic surface and easy to clean

**LHB-F100-C/N**  
(100W, Cool/Natural White)

**LHB-F150-C/N**  
(150W, Cool/Natural White)

**LHB-F200-C/N**  
(200W, Cool/Natural White)



 AVOL™

### LHB-E Series: LED High Bays

- Available in 100W and 150W
- Efficient 100lm/W light output
- 90° circular beam angle
- >80 colour rendering index
- 35,000hrs rated LED lifespan
- 6000K cool white colour temp.
- IP65 rated; integral driver design
- Pre-terminated 3-pin AC plug, mounting eyelet

**LHB-E100-C**  
(100W, Cool White)

**LHB-E150-C**  
(150W, Cool White)



# Intelligent LED Lighting

## Sensor battens, oyster lights & switches



### ENSA™

#### LOL-A Series: 16W LED Oyster Lights

- In standard, sensor & sensor+battery backup
- 1200lm, 120° beam angle, 30,000hrs lifespan
- 3000K warm (-W) or 5000K cool (-C) colour temp.
- Frosted diffuser, IP66 & IK10 weather/vandal rated
- Sensor: Adjustable on-time delay / standby modes
- Battery: 3.7V 1500mAh NiMH >5hr uptime at 1.2W

**LOL-A16-W/C (Standard)**

**LOL-A16-WS2/CS2 (Sensor Light)**

**LOL-A16-WSE/CSE (Sensor & Battery)**

### ENSA™

#### IP65 LED Sensor Batten Lights

- 2ft/4ft models, microwave sensor, set on-time duration
- **S2/SE Series:** Adjustable 2 stage dim (100% -> Dim -> Off), +80lm/W, 120° beam angle, 35,000hrs LED lifespan, IP65
- **SE Series:** 2hrs up-time backup battery, AS2293.3
- **S Series:** On/off mode only (100% -> Off), +75lm/W, 140° beam angle, 50,000 LED lifespan, IP65 rated

**S2 - Sensor,  
SE - Sensor/  
Battery**

**LEDBT18WS2 (2ft, 18W)**

**LEDBT36WS2 (4ft, 36W)**

**LEDBT18WSE (2ft, 18W)**

**LEDBT36WSE (4ft, 36W)**

**S - Sensor  
Batten**

**LEDBT18WS**

**(2ft, 18W)**

**LEDBT36WS**

**(4ft, 36W)**

### ENSA™

#### Intelligent Motion Sensor & Dusk/Dawn Switches



- |                 |                 |                 |                 |               |                 |              |                  |              |
|-----------------|-----------------|-----------------|-----------------|---------------|-----------------|--------------|------------------|--------------|
| • 12m 180°      | • 4m x 20m      | • Ø6m 360°      | • Ø20m 360°     | • Ø8m 360°    | • Ø16m 360°     | • 15m 180°   | • 2 ~ 100 Lux    | • 5 ~ 50 Lux |
| • Wall mount    | • Corridors     | • Recessed      | • Ceiling mount | • Concealed   | • Ceiling mount | • Wall mount | • DIN rail/probe | • Wall clip  |
| • PIR detection | • PIR detection | • PIR detection | • PIR detection | • Microwave   | • Microwave     | • Microwave  | • Dusk/dawn      | • Dusk/dawn  |
| • IP65 rated    | • IP20 rated    | • IP20 rated    | • IP65 rated    | • Indoor only | • IP20 rated    | • IP65 rated | • IP65 rated     | • IP65 rated |

**ENSA-PS1**

**ENSA-PS2**

**ENSA-PS3**

**ENSA-PS4**

**ENSA-MS1**

**ENSA-MS2**

**ENSA-MS6**

**ENSA-LC3**

**ENSA-LC1W**

# Complete AVOL Electrical Conduit, switchgear, ducting & electrical



## Professional AVOL Electrical Range

- HD/MD/Solar HD rigid conduit & accessories
- HD/MD/Solar HD corrugated conduit & accessories
- Industrial switchgear, sockets, plugs & inlets
- Outdoor rated GPOs and isolation switches
- Light switches, GPOs, grid plates & accessories
- Electrical switchboards, enclosures & jiffy boxes
- Electrical, HDMI, data, USB and video mechanisms

**Refer to your price guide for model list**



## Air Conditioning & Accessories

### Inverter WiFi R32 Air Conditioner Systems

- Manufacturer 6-year parts and labour warranty
- Full inverter air con systems with indoor & outdoor unit
- Up to 7.1kW cooling & heating; air flow up to 375L/sec
- Control via WiFi for iOS/Android (local IR remote incl.)
- 6 Year manufacturer air conditioner warranty
- 100mm ducting, 2m lengths & accessories
- Adjustable outdoor unit wall mounts
- 20m pre-insulated pair coil, 3 gauges

**Refer to your price guide for model list**



ENSA™

VIP  
VISION

AVOL

# Solar and Battery Systems

## Lighting, CCTV cameras & energy storage



Configure  
with Included  
Remote

ENSA™

### SSL-B Series: Solar Powered Lighting & Battery Systems

- Pre-configured & ready to install
- Adjustable LED lighting modules (180lm/W)
- Large capacity lithium batteries (LifePO4); 320Wh(-B30), 500Wh(-B50), 1200Wh(-B60)
- High conversion rate monocrystalline panels

SSL-B30MC (80W panel, 30W light)

SSL-B50MC (120W panel, 50W light)

SSL-B60MC (180W panel, 60W light)

VIP  
VISION

### Hinged Poles and Pole Bases

- 4m or 6m in height
- Heavy duty octagonal hinged poles; optional concrete pole bases
- \*Made to order

SLR-POL4-2 (4m height)

SLR-POL6-2 (6m height)

SLR-POLCONC (Base)

VIP  
VISION

### SLR-B Series: 4G/WiFi Solar Surveillance & LED Lighting

- 120W & 180W Solar + AI Surveillance
- Fully configured & ready to install
- Remote view via 4G or 5GHz wireless
- Surveillance grade microSD included
- Brackets and mounts included
- 500Wh or 1200Wh high capacity batteries

SLR-B120-4G/4W (120W Panel, 4G/WiFi)

SLR-B180-4G/4W (180W Panel, 4G/WiFi)

## Residential battery storage up to 20kWh

Ask about AVOL™ solar power and energy storage systems

AVOL™

### AVOL Genius Scalable Battery Storage

#### 5kWh - 20kWh On/Off-grid Battery System

- 5kW Hybrid Inverter with LFP Battery
- Expand up to 20kWh battery storage
- Retrofit to existing solar power system
- Connect up to 4 battery modules
- Mobile app - access anytime, anywhere
- Peak load shifting
- Battery priority
- Easy set-up and install
- AC/DC surge protection
- IP65 weather rated

AVOL-GENIUS5 (5kWh)

AVOL-GENIUS15 (15kWh)

AVOL-GENIUS10 (10kWh)

AVOL-GENIUS20 (20kWh)



Ask your local stockist for VIP Vision, ENSA, Watchguard, AVOL, Securview and our other great brands. Wholesale customers only. Product range and availability may be subject to change without notice, only while stocks last. Release 526.