

BIOLASE
LEADER IN DENTAL LASERS™

UNICORN DenMart [®]
Behind The Best Indian Dentists



DENTAL LASER
Step into the World of
Laser Dentistry





*epic*X

Power & Versatility
All in one Solution

Surgery, Whitening and Pain Relief All at Your Fingertips

Gummy Smile Reduction

Laser Orthodontics

Laser-Assisted Hygiene

Herpetic Lesion Therapy.

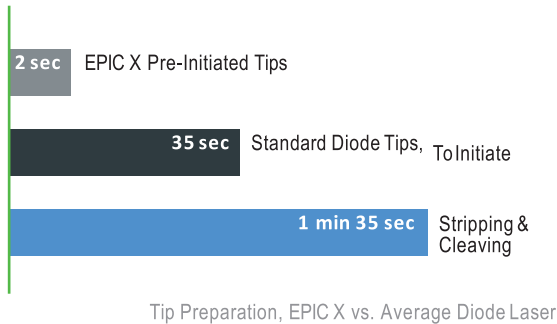
TMJ and Pain Relief

Teeth Whitening!



- ④ Faster treatment and healing
- ④ Exceptional value and ROI
- ④ Clinical versatility for complete patient care
- ④ Portable for easy transport
- ④ Easy to use
- ④ Comfort Pulse™ modes for the ultimate in patient comfort

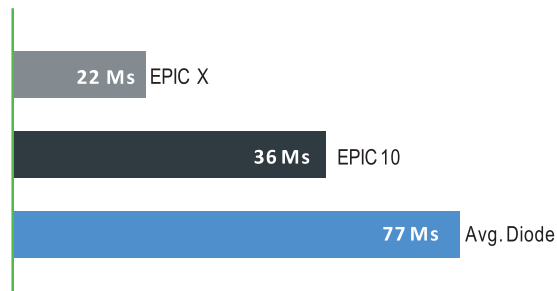
Maximum Performance, Minimum Chair Time



A BIOLASE Exclusive

Quick Surgery Prep

- ④ Exclusive pre-initiated tips guarantee a perfectly prepared tip
- ④ Predictable tissue ablation
- ④ Dramatically less time to prepare tips than standard diode tips



Designed to Maximize Efficiency

- ④ Easy touch-screen interface and pre-sets to shorten your learning curve
- ④ Most common and productive procedures already programmed
- ④ Totally wireless laser for easy portability between operatories

EPIC X offers the fastest in-office whitening procedure available, with dramatic shade change in 20 minutes of chairtime.



Pre-Initiated & Uninitiated Disposable Tips

Model	Color	Tip Length	Function
E2	Yellow	14 mm	Endo
E3	Blue	4 mm	Perio
E3	Blue	7 mm	Perio
E3	Blue	9 mm	Perio
E4	White	4 mm	Surgical
E4	White	7 mm	Surgical
E4	White	9 mm	Surgical

A BIOLASE Exclusive

Get to Treatment Faster

Choose from standard diode laser tips or our exclusive preinitiated tips to begin laser therapy faster than ever.



Whitening Contour Handpiece

Create BrightSmiles

EPIC X offers the fastest in-office whitening procedure available, with dramatic shade change in 20 minutes of chairtime.

Pain Therapy Handpiece

Provide Pain Relief

EPICX is cleared for temporary relief of minor pain, including pain associated with TMJ dysfunction and other oral maxillofacial pain.

Better Clinical Outcomes with EPIC X

Use your smart phone or tablet to scan the QR Codes next to each procedure and watch EPIC X in action.



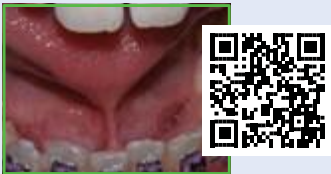
Laser Pocket Therapy



Gingival Troughing



Aphthous Ulcers



Frenectomy



Gingivectomy



Exposure of Unerupted Teeth



Excision for Biopsy



Soft-Tissue Crown Lengthening
Visit biolase.com for additional clinical videos

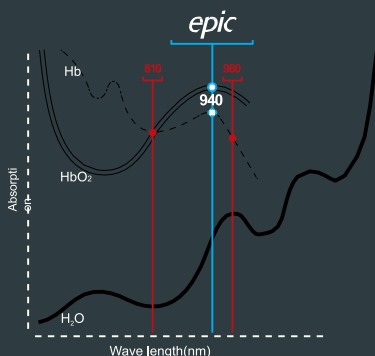


Implant Recovery

Global Leadership in Dental Laser Solutions

Fast Absorption in Target Tissue

Developed exclusively for dentistry by BIOLASE
Better absorbed by hemoglobin and oxyhemoglobin than other wavelengths (see graph below)
Cuts efficiently at lower power and with less heat



EPIC X Technical Specs

- Laser Classification: IV
- Wavelength: 940 ± 10nm
- Max Output Power: 10W
- Pulse Repetition Rate: 20KHz
- Power Modes: Continuous Wave (CW)
- ComfortPulse 0: 10µsec ON / 40µsec OFF
- ComfortPulse 1: 100µsec ON / 200µsec OFF
- ComfortPulse 2: 1msec ON / 1msec OFF
- Pulsed: 20 msec ON / 20 msec OFF
- Aiming Beam: Laser Diode, max 1mW, 635nm
- Fiber Cable Length: 6.8ft (2.0m)
- Dimensions: 4.4in x 5.7in x 6.5in
(11.2cm x 14.5cm x 16.5cm)
- Weight: 2.5lb(1kg)

Georgii, Petrov, Alexander Doronin, Harry T. Whelan, Igor Meglinski, Vladislav V. Yakovlev, "Human tissue color as viewed in high dynamic range optical spectral transmission measurements," Biomed. Opt. Express 3, 2154-2161 (2012); <http://www.opticsinfobase.org/boe/abstract.cfm?uri=boe-3-9-2124>



WaterLase*iPlus*™

REPAIR™

PERIODONTITIS PROTOCOL

Effectively manage your periodontal and peri-implantitis patients with the REPAIR protocols and WaterLase iPlus!

REPAIR PERIO™ and REPAIR IMPLANT™ were developed to provide clinicians a scientifically advanced treatment options to assist in the management of periodontitis and peri-implantitis patients. Utilizing the WaterLase iPlus and patented Radial Firing Perio Tip™, REPAIR provides a safe, effective laser treatment protocol that patients accept.

REPAIR PERIO Benefits:

- ◆ Patient-preferred, minimally invasive, periodontal laser protocol
- ◆ Treat site specific or full mouth cases for greater flexibility in treatment planning
- ◆ Capable of gentle removal of subgingival calculus
- ◆ Supported by clinical evidence and scientific research
- ◆ Promotes cementum-mediated periodontal ligament new-attachment to the root surface in the absence of long junctional epithelium

Case #1 – courtesy of Dr. Bret Dyer



“REPAIR is the effective protocol for managing periodontitis for it reverses the inflammatory process. The natural partner for REPAIR is the iPlus due to its ability to create a positive healing environment for soft- and hard-tissue including bone and tooth surface.”

— Dr. Samuel Low, Gainesville, FL



REPAIR™ PERIODONTITIS PROTOCOL

REPAIR IMPLANT Benefits:

- ✦ Patient-preferred, minimally invasive, peri-implantitis laser protocol
- ✦ Easy access to implant surface
- ✦ Closed flap protocol can be used to manage early peri-implantitis
- ✦ Treat site-specific or full-mouth therapy for flexibility in treatment planning
- ✦ Supported by clinical evidence and scientific research
- ✦ Laser photoacoustic properties effectively debride the implant surface³

Case #2 – courtesy of Dr. Rana Al-Falaki



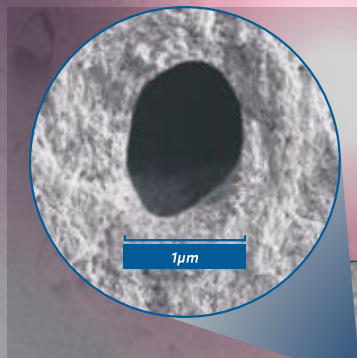
“The WaterLase iPlus is an integral part of every procedure I do. The results we achieve are outstanding, with so much less stress, so much more fun and so much more comfort for patients.”

— Dr. Rana Al-Falaki, London, UK

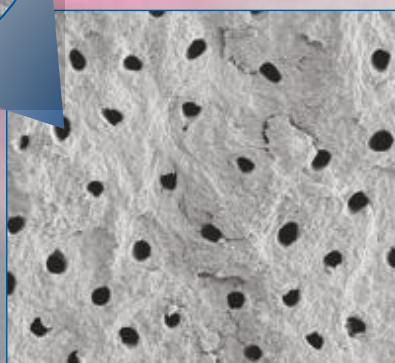
Innovative Endodontics

Simple, efficient and effective root canal therapy. Minimally invasive technique conserves remaining tooth structures for increased stability in restorations.

- ✦ 99.7% Reduction in bacterial counts in the root canal approaches sterilization⁴
- ✦ Bacteria CFUs 2.86x lower than the most effective NaOCl solution⁵
- ✦ Reduces risk of reinfection⁶
- ✦ Effective on most resistant bacteria – e.faecalis⁴
- ✦ Only 2-3 minutes for disinfection vs. 20-30 minutes with NaOCl⁵



Canal wall after instrumentation – only dentinal tubules covered and blocked by smear layer



Canal wall after EndoLase RFT with clean, open tubules

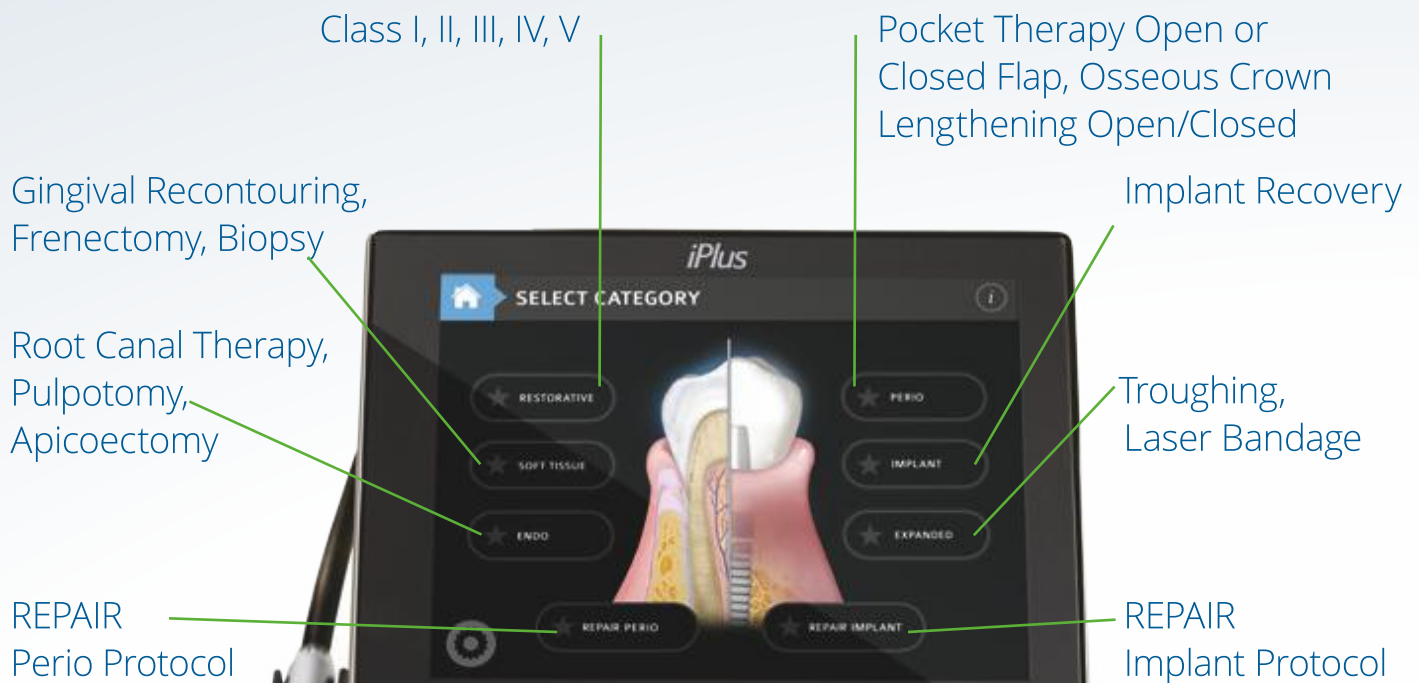


*“WaterLase may be the missing link that enables us to **kill bacteria deep within the dentinal tubules**. In our practice, we no longer aim to “entomb” bacteria but rather to eliminate bacteria.”*
— Dr. Justin Kolnick, White Plains, NY

Intuitive Graphic User Interface

WaterLase iPlus has more clearances and indications than any other dental laser. As your clinical skills grow, the number and type of procedures you will perform grows with you.

- ✦ Increase productivity and add incremental revenue with 56 pre-set procedures for select and go treatment
- ✦ Expand your practice capabilities with the **NEW** REPAIR Perio and REPAIR Implant Apps to assist in the management of periodontitis and peri-implantitis
- ✦ Take control of tissue with adjustable settings as needed



Flexibility You Deserve

The WaterLase iPlus has the lightest, most flexible trunk fiber ever. Titanium fiber cable and an extremely small diameter give the iPlus handpiece virtually zero resistance in your hand to help eliminate fatigue so you can easily access any treatment site. Words don't really describe it — you have to try for yourself.

- ✦ Redesigned optics efficiently deliver precise laser energy to cut enamel, dentin, bone for increased precision and less destruction
- ✦ Optimized to provide more uptime with a replaceable, disposable shield for better dependability
- ✦ Decrease your treatment fatigue with the most flexible, tension free delivery system available
- ✦ Improved clinical access and comfort with the SureFire™ exclusive contra-angle handpiece, navigate subgingivally with ease

SureFire™

YSGG Delivery System



Access You Need

The WaterLase iPlus features the only illuminated contra-angle handpiece on any dental laser. BIOLASE's patented contra-angle design allows you to easily and precisely move the laser tip around the treatment site, giving you access to those difficult to reach posterior cases, while the illumination of the handpiece provides the visibility you need.

The iPlus handpiece is also the smallest handpiece, an important consideration for pediatric patients and working in the back of the mouth.



The WaterLase iPlus features the only illuminated contra-angle handpiece on any dental laser. BIOLASE's patented contra-angle design allows you to easily and precisely move the laser tip

around the treatment site, while the handpiece's illumination provides the best visibility.

— Dr. Glenn van As, Vancouver, BC



The WaterLase contra-angle handpiece is the sleekest and most ergonomic of any dental laser.

Clinical Indications

Soft-Tissue (Including Pulpal Tissue)*

Incision, excision, vaporization, ablation and coagulation of oral soft-tissues, including:

- ✦ Excisional and incisional biopsies
- ✦ Exposure of unerupted teeth
- ✦ Fibroma removal
- ✦ Flap preparation – incision of soft-tissue to prepare a flap and expose the bone
- ✦ Flap preparation – incision of soft-tissue to prepare a flap and expose unerupted teeth (hard and soft-tissue impactions)
- ✦ Frenectomy and frenotomy
- ✦ Gingival troughing for crown impressions
- ✦ Gingivectomy
- ✦ Gingivoplasty
- ✦ Gingival incision and excision
- ✦ Hemostasis
- ✦ Implant recovery
- ✦ Incision and drainage of abscesses
- ✦ Laser soft-tissue curettage of the post-extraction tooth sockets and the periapical area during apical surgery
- ✦ Leukoplakia
- ✦ Operculectomy
- ✦ Oral papillectomies
- ✦ Pulpotomy
- ✦ Pulp extirpation
- ✦ Pulpotomy as an adjunct to root canal therapy
- ✦ Root canal debridement and cleaning
- ✦ Reduction of gingival hypertrophy
- ✦ Soft-tissue crown lengthening
- ✦ Treatment of canker sores, herpetic and aphthous ulcers of the oral mucosa
- ✦ Vestibuloplasty

Hard-Tissue

General Indications*

- ✦ Class I, II, III, IV and V cavity preparation
- ✦ Caries removal
- ✦ Hard-tissue surface roughening or etching
- ✦ Enameloplasty, excavation of pits and fissures for placement of sealants

Laser Periodontal Procedures

- ✦ REPAIR Protocol: WaterLase Er,Cr:YSGG assisted new attachment procedure (cementum-mediated periodontal ligament new attachment to the root surface in the absence of long junctional epithelium)
- ✦ Removal of subgingival calculi in periodontal pockets with periodontitis by closed or open curettage
- ✦ Removal of highly inflamed edematous tissue affected by bacteria penetration of the pocket lining and junctional epithelium
- ✦ Full thickness flap
- ✦ Partial thickness flap
- ✦ Split thickness flap
- ✦ Laser soft-tissue curettage
- ✦ Laser removal of diseased, infected, inflamed and necrosed soft-tissue within the periodontal pocket
- ✦ Removal of granulation tissue from bony defects
- ✦ Sulcular debridement (removal of diseased, infected, inflamed or necrosed soft-tissue in the periodontal pocket to improve clinical indices including gingival index, gingival bleeding index, probe depth, attachment loss and tooth mobility)

- ✦ Osteoplasty and osseous recontouring (removal of bone to correct osseous defects and create physiologic osseous contours)
- ✦ Ostectomy (resection of bone to restore bony architecture, resection of bone for grafting, etc.)
- ✦ Osseous crown lengthening

Endodontic Surgery (Amputation)

- ✦ Flap preparation – incision of soft-tissue to prepare a flap and expose the bone
- ✦ Cutting bone to prepare a window access to the apex (apices) of the root(s)
- ✦ Apicoectomy – amputation of the root end
- ✦ Root end preparation for retrofill amalgam or composite
- ✦ Removal of pathological tissues (i.e. cysts, neoplasm or abscess) and hyperplastic tissues (i.e., granulation tissue) from around the apex

Root Canal Hard-Tissue

- ✦ Tooth preparation to obtain access to root canal
- ✦ Root canal preparation including enlargement
- ✦ Root canal debridement and cleaning
- ✦ Laser root canal disinfection after endodontic instrumentation

Bone/Surgical

- ✦ Cutting, shaving, contouring and resection of oral osseous tissues (bone)
- ✦ Osteotomy

Technical Specifications

Dimensions

Unit (W x L x H):	11.0 x 18.9 x 35.5 in (27.9 x 48.0 x 85.1 cm)
With Fiber (W x L x H):	11.0 x 18.9 x 53.3 in (27.9 x 48.0 x 135.4 cm)
Weight:	75 lb (34 kg)

Electrical

Class I Medical Electrical (ME) Equipment	
Operating voltage:	100 VAC ± 10% / 230 VAC ± 10%
Frequency:	50 / 60 Hz
Current rating:	5.0 A / 8 A
Main control:	Circuit breaker
On / Off control:	Keyswitch
Remote interruption:	Remote interlock connector

Water Spray

Water type:	Distilled, De-ionized, or Sterile
External air source:	80 – 120 psi. (5.5 - 8.2 bar)
Water:	0 – 100%
Air:	0 – 100%
Interaction zone:	0.5 – 5.0 mm from handpiece tip to target

Optical

Laser classification:	IV (4)
Medium:	Er,Cr:YSGG (Erbium, Chromium: Yttrium, Scandium, Gallium, Garnet)
Wavelength:	2.78 μm (2780 nm)
Frequency:	5 – 100 Hz
Average power:	0.1 – 10.0 W
Power accuracy:	± 20%
Pulse energy:	0 – 600 mJ
Pulse duration "H" mode:	60 μs
Pulse duration "S" mode:	700 μs
Handpiece head angles:	70° contra-angle
Gold HP Tip diameter range:	200 – 1200 μm
Turbo Tip focal diameter range:	500 – 1100 μm
Output divergence:	≥ 8° per side
Mode:	Multimode
Aiming beam:	635 nm (red) laser, 1 mW max (safety classification 1)
Water level sensor beam:	635 nm laser, 1 mW max (safety classification 1)
Nominal Ocular Hazard Distance (NOHD):	5 cm
Maximum Permissible Exposure (MPE):	3.5 x 10 ⁵ W/m ²



WaterLase *iPlus™



WHERE TRUST COMES FIRST



**Warranty Ke Saath Bhi
Warranty Ke Baad Bhi**

For any Sales & Support

 9821184441, 8448398852

 sales@unicorndenmart.com

Customer Care

Register Your Complaint with A Missed Call: **7065-558-558**

 011-45551250, 51, 55  97170-12081, 95994 -48518

 care@unicorndenmart.com | care1@unicorndenmart.com

Connect With



Unicorn DenMart



Corporate Office: 3 Local Shopping Centre, MOR Land, Near J Block DDA Market,
New Rajender Nagar, New Delhi □ 110060

    /unicorndenmart.com

* Accessories shown may not be a part of standard equipment. Specifications are subject to change without notice.

Ver 05/2026