

MAP INCLUDED

NORTH CAROLINA
*Great Smoky
Mountains*
TRAVEL GUIDE



WHERE WESTERN NORTH CAROLINA
GETS WILD...NATURALLY

ADVENTURE *Naturally*

YOUR OFFICIAL ADVENTURE ACTIVITIES GUIDE TO THE NORTH CAROLINA GREAT SMOKY MOUNTAINS

YOUR PERSONAL HANDBOOK INCLUDES:

- ★ FRONT: Activity Lists (pages: 4-25)
- ★ SECOND HALF: Specific Areas (pages: 26 to 107)
- ★ BACK: Fold-Out Map of the region

YOU'RE ALWAYS WELCOME IN OUR BACKYARD TO EXPERIENCE:

- ★ ADVENTURE
- ★ BEAUTY
- ★ SOUTHERN HOSPITALITY

Every effort has been made to ensure the accuracy of the information in this publication. Please contact mici@visitsmokies.org with any additions or corrections.

The back fold-out map is for general informational purposes only and not to scale.

Reproduction in any part without permission of Smoky Mountain Host is prohibited.

Smoky Mountain Host
Of North Carolina
Visitor Information Center
4437 Georgia Road
Franklin, NC 28734
828-369-9606 • www.visitsmokies.org



COVER PHOTOS BY:
PRO.16 PRODUCTIONS

THE MOUNTAINS ARE TIMELESS, your adventures are endless



From majestic mountain landscapes, scenic hiking trails, and spectacular train excursions to the pristine waters of Fontana Lake and the Nantahala River, experience the outdoors in Bryson City.



828-488-7857 | ExploreBrysonCity.com | [@brysoncity](https://www.instagram.com/brysoncity)
Located in far Western North Carolina one hour west of Asheville and three hours north of Atlanta.

ENJOY THE JOURNEY. *Naturally.*

Blueways	4-5
#VisitSmokies	6-7
Campgrounds & Recreation Areas	8-9
Hiking, Biking & Horseback Riding Trails	10
Kids Adventures	11
Must-Do Adventures	12-13
National Parks & National Forests	14-15
Outdoor Experiences	16-19
Scenic Byways	20-21
Chasing Waterfalls	22-25

WESTERN NC REGION

Bryson City	26-38
Cherokee	38-47
Fontana, Robbinsville & Lake Santeetlah	48-55
Franklin & Nantahala	56-71
Hayesville & Brasstown	72-75
Highlands, Cashiers, Glenville, Sapphire & Scaly Mountain	76-79
Murphy & Andrews	80-85
Sylva, Dillsboro, Balsam & Cullowhee	86-95
Waynesville, Maggie Valley & Canton	96-103
Dillard & Clayton, Georgia	104-106
Nearby Neighbors	107

Published by
Smoky Mountain Host




Proud to be part of
the Blue Ridge National
Heritage Area





Smoky Mountain Visitor Center is
operated in partnership with the North
Carolina Department of Transportation



Wayah Bald
By contest winner:
David McKenzie

 @visitsmokies

 @visitsmokies

 @visitsmokies

 @visitsmokies



Tag your adventure **#VisitSmokies**
828-369-9606 | VisitSmokies.org

SHARE YOUR
GREAT SMOKY MOUNTAINS
NORTH CAROLINA ADVENTURE
#VISITSMOKIES

**SUNSETS ARE BETTER IN
NORTH CAROLINA'S
MOUNTAINS**

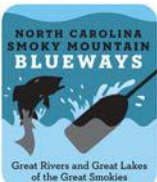


ncdot.gov/scenic

**ARCHEOLOGY · CULTURE · HISTORY
NATURE · RECREATION · SCENIC BEAUTY
ALL PART OF A NC BYWAY OUTING**

#NCSCENICBYWAYS · #NCDOT

Fontana Lake
By contest winner:
Edward Campbell



NORTH CAROLINA
SMOKY MOUNTAIN BLUEWAYS
167 MILES OF WATERWAYS

SPLASH IN THE *Blueways*



The Only National Water Trail in North Carolina: The Great Rivers & The Great Lakes of The Great Smokies. This trail is one of 33 in the National Water Trails System. It is located in the Little Tennessee Watershed, containing portions of the five major rivers:

Cheoah River **Little Tennessee River**
Nantahala River **Oconaluftee River**
Tuckasegee River

To learn more about the North Carolina Smoky Mountain Blueways, visit nrtdatabase.org/trailDetail



Grab a copy of the Blueways map from the Smoky Mountain Host Visitor Center, 4437 Georgia Road, Franklin, NC 828-369-9606 or online at smokymountainblueways.com.



Cheoah River

Located near Robbinsville.

Unique Features: Exciting Rapids—
Class IV & V (during release days)

One of the most physically demanding
rivers in the world!



Fontana Lake

Offers best smallmouth bass fishing.

Enjoy: Boating, Floating & Kayaking.

Hikers enjoy views from observation
tower on Kuwohi.



Lake Glenville

Only 8 miles from Cashiers.

26 miles of shoreline.

Highest elevation lake east of
the Mississippi.

Known to avid fisherman for
smallmouth Bass.





Little Tennessee River

River & Watershed comprise one of the richest archaeological areas in the SE of U.S.

River drains portions of 3 national forests: Chattahoochee, Cherokee & Nantahala.



Nantahala Lake

Only place to find Kokanee Salmon in the Southeast.

Sits above Nantahala Gorge.

Known for scenic beauty, crystal-clear waters, excellent fishing.



Nantahala River

Offers family-friendly rapids & kayaking.

America's most popular 8 miles of rapids—Class II & III.

One the top 100 Trout streams in U.S.



Oconaluftee River

Considered sacred waters by the Cherokee.

Popular for: Canoeing, Tubing & Wading, Fishing.

River drops 2,000 feet over 10 miles

Famous for Rainbow, Brook & Brown Trout.

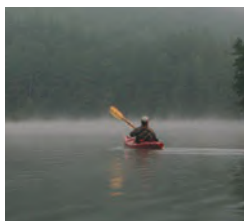


Santeetlah Lake

8 miles from Appalachian Trail.

50 primitive campsites & 200 miles of trails—Cheoah District.

Variety of fishing: Bass, Crappie, Walleye, Bream & Trout.



Tuckasegee River

Known as the "Tuck".

Popular for Floating, Fishing, Tubing, Canoeing, Rafting, Kayaking & Fly Fishing.





#VISITSMOKIES

WESTERN NC REGION

Most of the Highest-Elevation Mountains in the U.S.
smokymountains.com/park/blog

SEE UNIQUE VIEWS

From The Great Smoky Mountains Railroad • gsmr.com

THE NANTAHALA OUTDOOR CENTER

Best Outfitters on Earth per National Geographic Adventure Magazine • noc.com

GET LUCKY

Harrah's Cherokee Casino & Resort, Cherokee and/or Harrah's Cherokee Valley River Casino & Hotel, Murphy • caesars.com

ABSORB CULTURE

Cherokee showcases History of Tribe, Living Re-enactments of Village Life & Authentic Cherokee artwork • cherokeesmokies.com





NANTAHALA & PISGAH NATIONAL FORESTS

Two of the most visited National Forests in the U.S. • fs.usda.gov

PRISTINE WATERWAYS

Best Trout fishing in the world
discoverjackson.com/outdoors/fishing

RICH APPALACHIAN HERITAGE

See craftsmanship found in handcrafted furniture, pottery, quilts and music • blueridgeheritage.com

BLUEGRASS

Enjoy great local music and traditional clogging
blueridgemusicnc.com

WATER. WATER. WATER

Swimming, waterfalls, rafting, kayaking, canoeing, paddleboarding, tubing, fishing and blueways • visitsmokies.org

DRIVE AWAY YOUR TROUBLES

Blue Ridge Parkway, Cherohala Skyway, and NC Scenic Byways
ncdot.gov/scenic



CAMPGROUNDS AND

NANTAHALA NATIONAL FOREST

			Camping	Picnic Area	Restrooms	Trailer Space	Trailer Dump Station	Showers
1	Balsam Lake	Open April-Oct		•				
2	Bob Allison Campground	Open year-round		•	•			
3	Cable Cove	Open April-Oct	•	•	•	•		
4	Cheoah Point	Open April-Oct	•	•	•	•		
5	Cherokee Lake	Open year-round		•	•			
6	Cliffside Lake	Open May-Oct	•	•	•			
7	Ferebee Memorial	Open year-round		•				
8	Fires Creek	Open year-round		•	•			
9	Horse Cove*	Open year-round	•		•	•		
10	Hurricane Primitive	Open April 16-Dec 31	•			•		
11	Jackrabbit Mountain	Open May-Sept	•	•	•	•	•	•
12	Joyce Kilmer	Open year-round		•	•			
13	Nantahala Gorge	Open year-round		•				
14	Rattler Ford***	Open mid-Apr-mid Oct						•
15	Snowbird	Open year-round		•	•			
16	Standing Indian	Open April-Nov	•	•	•	•	•	•
17	Sunburst	Open May-Nov	•	•		•		
18	Tsali	Open April-Oct	•	•		•		•
19	Van Hook Glade	Open May-Oct	•		•	•		
20	Wayah Bald	Open April 16-Dec 31		•	•			
21	Whiteside Mountain	Open year-round						
22	Whitewater Falls	Open year-round			•			

GREAT SMOKY MOUNTAINS NATIONAL PARK

1	Balsam Mountain*	Open year-round	•	•	•	•		
2	Cades Cove**	Open year-round	•	•	•	•		
3	Cataloochee	Open April-Oct	•	•	•	•		
4	Deep Creek	Open May-Oct	•	•	•	•		
5	Elkmont*	Open year-round	•	•	•	•		
6	Smokemont**	Open year-round	•	•	•	•		

ALL NUMBERS LISTED CORRESPOND WITH FOLD-OUT MAP

*In winter no water or fee **Weather permitting
 ***For reservations: 877-444-6777 or visit recreation.gov

RECREATION AREAS

NANTAHALA NATIONAL FOREST		Drinking Water	Handicap Accessible	Hiking Trail	Horse Trail	Bike Trail	Swimming	Boat Ramp	Canoe/Rafting	Fishing	Scenic Views	Ampitheater	Information	Fee Required
1	Balsam Lake		•	•						•				
2	Bob Allison	•		•										
3	Cable Cove	•						•		•				•
4	Cheoah Point	•		•				•		•				•
5	Cherokee Lake	•	•							•				
6	Cliffside Lake	•		•			•			•				•
7	Ferebee Memorial								•	•				
8	Fires Creek				•					•				
9	Horse Cove*	•								•				•
10	Hurricane Primitive			•	•					•				
11	Jackrabbit Mountain	•		•			•	•		•		•		•
12	Joyce Kilmer	•		•									•	
13	Nantahala Gorge								•	•	•			
14	Rattler Ford***	•		•						•				
15	Snowbird									•				
16	Standing Indian	•		•						•				•
17	Sunburst	•												•
18	Tsali	•		•	•	•		•		•				•
19	Van Hook Glade	•												•
20	Wayah Bald			•							•			
21	Whiteside Mountain			•							•			
22	Whitewater Falls			•							•			

GREAT SMOKY MOUNTAINS NATIONAL PARK

1	Balsam Mountain*	•		•							•			•
2	Cades Cove**	•	•	•	•					•	•		•	
3	Cataloochee	•		•							•			•
4	Deep Creek	•		•	•					•				•
5	Elkmont*	•	•	•						•	•		•	•
6	Smokemont**	•	•	•	•					•	•		•	•

ALL NUMBERS LISTED CORRESPOND WITH FOLD-OUT MAP

Call the ranger station (828-524-4410) if you have additional questions about facilities and activities.

HIKING, BIKING AND HORSEBACK RIDING TRAILS

TRAIL NAME	Miles	Easy	Moderate	Difficult	Bike Trail	Horse Trail	Fishing	Handicap Accessible
Appalachian Trail to Charlie's Bunion	4		•	•				
Appalachian Trail to Wesser Bald	2		•					
Bartram Trail	37.7	•						
Benton Mackaye Trail	300	•	•	•				
Big Indian Horse Trail	8		•			•	•	
Big Snowbird Trail	12.7			•			•	
Fire Mountain Trails	10.5			•	•			
Fires Creek Area Trails	.3-5.4	•	•	•		•	•	
Fontana Village Trails	20	•	•	•	•			
Jackrabbit Mountain	14	•	•		•			
Jackrabbit Mountain Trail	2.5	•					•	
Joyce Kilmer Memorial Trail	2	•					•	
Mallonee Trail	5	•					•	•
Maple Springs Observation Point	800	•						•
Mountains-to-Sea Trail	108			•	•	•		
Panthertown Valley	30		•		•			
Santeetlah Bike Trails	15	•	•		•			
Santeetlah Lake Trail	15			•	•			
Tsali Recreation Area	15		•		•	•		
Western Carolina University Trail	6.6		•		•			
Whiteside Mountain Trail	2	•						
Yellow Mountain Trail	6.4			•				



NATURAL WAYS TO *Play*

TUBING

Smoky Mountain River Adventures & Smoky Mountain Tubing,
Sylva & Cherokee

Deep Creek Tubing,
Bryson City

MINI GOLF

Fontana Village Resort,
Pool & mini golf.
Fontana Dam

GEM MINING

Andy's Trout Farm, Cherokee Ruby Mine, Deep Creek Gem Mine, Gold City Gem Mine, Jackson Hole Trading Post & Gem Mine, Kayaking & Gem Mining, Rose Creek Gem Mine, Sheffield Gem Mine,
Franklin, Highlands, Bryson City

RAILROAD

Great Smoky Mountains Railroad,
Bryson City, Andrews

TROUT FISHING

Andy's Trout Farm, Andrews Valley Rail Tours and Highlands Outpost,
Franklin & Highlands

BISON VIEWING

Buffalo Creek Vacations,
Clyde

WINTER ACTIVITIES

Highlands Outpost
Summer & Winter tubing, ice skating.
Highlands

ARCADE/BOWLING

Harrah's Cherokee & Valley River Casino Resorts (Ultra Star Multi-tainment Center)
Arcade & bowling.
Cherokee & Murphy

Fontana Village Resort,
Arcade & bowling.
Fontana Dam

WHITewater RAFTING

Nantahala Outdoor Center, Carolina Outfitters, Rolling Thunder, Wildwater and Brookside, Endless River Adventure, plus more
Bryson City. Ages 7+.

ZIPLINING

Nantahala Outdoor Center, Wildwater and Highlands Aerial Park,
Bryson City & Highlands



Natural Adventures **IN THE NORTH CAROLINA GREAT SMOKIES**

TAKE A TRIP ON THE GREAT SMOKY MOUNTAINS RAILROAD

Departing from historic Bryson City, this scenic excursion railroad has a variety of trips and packages for any kind of adventure. Take in the fresh air while riding on open-air gondola car trips, or enjoy a gourmet meal in a first-class dining car during the food-friendly trips. • gsmr.com

BOOK AN ADVENTURE WITH NANTAHALA OUTDOOR CENTER

Named "One of the Best Outfitters on Earth" by National Geographic Adventure, Nantahala Outdoor Center offers a range of adventures to get your family enjoying the outdoors. Choose from family-friendly outdoor adventures including Nantahala River whitewater rafting, a new Mountaintop Zip Line Tour in the Nantahala Gorge and a family-friendly Zip Line Adventure Park. • noc.com

FEEL THE INFLUENCE OF CHEROKEE

Located in the heart of Western North Carolina, Cherokee is a culture, a people and a sovereign nation. Take a mud-splattering romp through the nearby Great Smoky Mountains, while hearing the creation legend in the Museum of the Cherokee Indian, or watch the profound outdoor drama "Unto These Hills." See how the Cherokee lived two and a half centuries ago at the Oconaluftee Indian Village, an authentic working village with dwellings, residents and artisans right out of the 1760s. Plan. Play. Visit. And discover at visitcherokeenc.com



COUNT YOUR LUCK AT HARRAH'S CHEROKEE CASINO AND RESORT

A casino, luxury hotel with fine dining options, world-renowned spa and event center, Harrah's Cherokee Casino and Resort offers a luxurious experience within the North Carolina Smoky Mountains. The new Harrah's Cherokee Valley River Casino & Hotel in Murphy offers many of the same amazing amenities with over 60,000 square feet of gaming. Book your stay at caesars.com/harrahs-chokeee

JOHN C. CAMPBELL FOLK SCHOOL

The John C. Campbell Folk School in Brasstown, North Carolina, is a cornerstone of Appalachian culture. Founded in 1925, the school celebrates **100 years in 2026**, marking a century of preserving traditional mountain crafts and community learning.

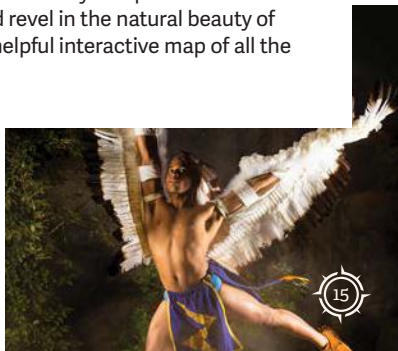
Set on a scenic campus, the Folk School offers hands-on classes in pottery, weaving, blacksmithing, woodworking, music, and more. Visitors can explore the **log cabin museum**, which highlights the school's history and the region's rich craft traditions.

Through craft classes, festivals, and daily campus activities, the Folk School continues to honor and share the living heritage of Appalachia. folkschool.org

UNWIND AT BREWERIES AND WINERIES

The explosion of craft breweries is happening all over the Smokies! Craft breweries are now operating in Andrews, Bryson City, Cashiers, Cherokee, Franklin, Hayesville, Highlands, Murphy, Sylva and Waynesville, with more opening all the time. Travelers could spend days exploring each small town's unique breweries and never visit the same place twice.

While you wind your way through the mountains, take some time to explore the scenic beauty and taste the fruits of our vineyards. Western North Carolina's wineries and vineyards provide the perfect setting to imbibe, relax and revel in the natural beauty of this region. Visit ncwine.org for a helpful interactive map of all the wineries in the region.





EXPLORE

National Parks & National Forests

BLUE RIDGE PARKWAY

The most visited unit of the National Park System, the Blue Ridge Parkway is known for its stunning views, abundant hiking trails, picnic areas, campsites and informational exhibits. Named “America’s Favorite Drive,” the Parkway offers 469 miles connecting the Great Smoky Mountains National Park in NC to the Shenandoah National Park in VA and is definitely worth the trip. Experience the world’s most diverse display of flora and fauna. blueridgeparkway.org

GREAT SMOKY MOUNTAINS NATIONAL PARK

Straddling NC and TN, the Great Smoky Mountains National Park encompasses over half-a-million acres, making it the largest national park in the East. It has more species of plants, animals and insects than anywhere else in the world, rivaling even the rainforests. Hike on one of the more than 900 miles of trails in the park. Locals agree that the NC side of the park is considered more pristine and tranquil and is less heavily used than the TN side. nps.gov



THE FOLKWAYS OF APPALACHIA

Just off of U.S. Highway 441 through Great Smoky Mountains National Park sits Mingus Mill, a historic gristmill built in 1886 and a living piece of Smoky Mountain history. Visitors can purchase corn meal and other mill-related items while seeing how a real mill works. Just a half mile down the road at the Oconaluftee Visitor Center, you’ll find The Mountain Farm Museum. *Mingus Creek Trail, Cherokee, NC*



NANTAHALA NATIONAL FOREST

Nantahala National Forest is the largest of the four national forests in North Carolina, covering just over half-a-million acres. There are more than 27,000 acres of designated wilderness found in its hills, including Ellicott Rock, Joyce Kilmer-Slickrock and the Southern Nantahala Wilderness.

The Nantahala National Forest is renowned for whitewater rafting, mountain biking, camping and hiking. World-renowned trails including The Appalachian Trail, Bartram's Trail and the Mountains-To-Sea Trail all meander through the forest. fs.usda.gov

PISGAH NATIONAL FOREST

The Pisgah National Forest began as a part of George Vanderbilt's private estate. The area west of Vanderbilt's Asheville Biltmore Estate was sold to the federal government after his death in 1914 and became the first tracts of the now half-million-acre Pisgah National Forest. Today, Pisgah is home to the Shining Rock Wilderness Area, Max Patch, the Harmon Den Bear Preserve, The Cradle of Forestry and Sliding Rock. • fs.usda.gov





MAKE NATURAL *Family Memories*

FISHING

Nationally recognized for native and stocked trout, fishermen are happy to explore the many lakes, creeks and rivers that run through the area. Cherokee is a former site of the U.S. National Fly Fishing Championships and offers some of the best fishing in the U.S. You'll fall in love with the beautiful freestone streams stocked with trout that flow through Qualla Boundary. Jackson County has a fly-fishing trail that is sure to amaze, considering it was the first of its kind in the country. If that isn't enough, now Swain County has one too and Bryson City is home to the Fly Fishing Museum Of the Southern Appalachians!

Nonresident and resident fishing permits and licenses can be purchased online. Special tribal fishing permits can be acquired to fish on the Qualla Boundary of the Eastern Band of Cherokee Indians at fishcherookee.com. State fishing licenses can be acquired at ncwildlife.org/licensing.

GEM MINING

Many gem mines in the region offer a wonderful experience as adults and children sift through locally mined soil to try and uncover valuable stones. Deep Creek Tubing/Campground, Bryson City; Sheffield Gem Mine, Franklin; Gold City Gem Mines, Franklin; Jackson Hole Gem Mines, Highlands; Mason's Ruby and Sapphire Mine, Franklin; Rose Creek Mine, Franklin; and Andy's Trout Farm, Otto all offer an unforgettable experience.

GOLFING

Gentle slopes and woods-rimmed fairways beckon pros and amateurs alike to indulge in a relaxing, scenic game at Sequoyah National Golf Club, NC and Sky Valley Country Club, GA.

HORSEBACK RIDING

Whether it's an all-day ride with a picnic or a shorter excursion, children and adults of all ages will enjoy a guided horseback-riding trip through the mountains. To book a trip, check out one of the many operating stables in the Smokies, including Arrowmont Stables & Cabins, Cataloochee Ranch and Smokemont Stables.

MOTORCYCLING

For a winding trip through the mountains, take a tour on The Dragon, which is considered **"THE DESTINATION"** for thousands of motorcycle and sports car fans throughout the spring, summer and fall. Along your way, stop by Deals Gap Motorcycle Resort for a bite to eat, shop or a place to stay.

MOUNTAIN BIKING AND HIKING TRAILS

Whether you want short or long, difficult or easy, trees or waterways, there are mountain biking and hiking trails for every adventure, and then more trails on top of that.

RAFTING AND KAYAKING

The North Carolina Great Smokies are known for whitewater rafting. Named "One of the Best Outfitters on Earth" by National Geographic Adventure, Nantahala Outdoor Center offers a wide array of adventures for everyone in your group. If you're looking for tamer, family-friendly river experiences, the Tuckasegee River and the Little Tennessee River are perfect places to get children out on the water. There are plenty of companies that book trips on these rivers, including Smoky Mountain River Adventures in Whittier and Primitive Outback Kayaking & Gem Mining in Otto. For more exciting rafting experiences, check out Brookside, Carolina Outfitters, Rolling Thunder and Wildwater.

SNOW TUBING

Downhill tubing in the North Carolina Smokies offer breathtaking mountain views. Celebrate the outdoors and have more fun than ever this winter by snow tubing and ice skating at Highlands Outpost. The town of Highlands has an ice skating rink at Kelsey-Hutchinson Park.

WATER TUBING AND PADDLEBOARDING

One of summer's sweetest pleasures in the North Carolina Smokies is floating along the cool mountain waters. No tube? No worries. All four rivers have companies to outfit you with a tube. Some more popular spots are Deep Creek Tubing in Bryson City; Smoky Mountain Tubing on the Oconaluftee River in Cherokee; Smoky Mountain Adventures in Whittier; on the Tuckasegee River and Primitive Outback on the Little Tennessee River south of Franklin in Otto. If standing is more your thing, try the increasingly popular paddleboarding.

ZIP LINING

If you've taken the time to see the forest from the trails, perhaps it's time to get a bird's-eye view. Three popular spots are the Nantahala Outdoor Center in Bryson City; Wildwater Nantahala Gorge Adventure Center in Wesser and the Highlands Aerial Park at Scaly Mountain.



NATURAL *Outdoor Experiences*

THE COWEE MOUND

In 2007, the Eastern Band of Cherokee Indians purchased 70 acres along the Little Tennessee River that included the historic Cowee Mound and Village Site, thought to date from approximately 600 A.D. The transaction was made possible with assistance from Mainspring (then the Land Trust for the Little Tennessee) and the N.C. Clean Water Management Trust Fund. There is a conservation easement on the property that permanently protects its conservation values and prevents commercial and residential development.

The council house of the Cherokee town of Cowee was located on this mound in the 18th century, when the town of Cowee served as the principal diplomatic and commercial center of the mountain Cherokee. Cowee is considered one of the most significant archaeological sites of the Mississippian period in North Carolina, where the presence of agriculture on the bottomlands dates back at least 3,000 years.

Located in Cowee Historical District on Highway 28, Franklin, NC.



THE NIKWASI MOUND

In 2026, the sacred Nikwasi Mound in Franklin, North Carolina, was officially returned to the Eastern Band of Cherokee Indians, marking a historic moment for the region. The mound, also known as Noquisiyi, is more than 1,000 years old and was once the center of a Cherokee mother town along the Little Tennessee River. For nearly 200 years, the land was held by private owners and the town of Franklin before efforts began to restore it to Cherokee stewardship.

After years of collaboration between the Eastern Band of Cherokee Indians, the Town of Franklin, and the Nikwasi Initiative, the deed was formally transferred in early 2026. The return represents a powerful act of cultural recognition and restoration, bringing an important spiritual site back to the people whose ancestors built and protected it.

Today, Nikwasi Mound remains a visible reminder of Cherokee history and resilience, ensuring that this sacred place will be preserved and cared for by the Cherokee people for generations to come.

Located on Main Street in downtown Franklin, NC.



TRAVEL ALONG *Scenic Byways*

Follow the byways, and you will see some of the most breathtaking scenery in the North Carolina Great Smokies. Designated specifically to give visitors and residents a chance to experience a bit of North Carolina history, geography and culture, they also raise awareness for the protection and preservation of area treasures. For more information, visit ncdot.gov/scenic to guide your tour along the region's Scenic Byways.

1 CHEROHALA SKYWAY

Esquire magazine said, "It's like driving through a car commercial." Connecting the Cherokee National Forest to the Nantahala National Forest, this clean, smooth highway encourages you to open up your sports car or pause your RV for a sandwich and the beautiful sights. And the skyway vs. byway bit? Once you drive it, you'll understand.

20 miles • 45 minutes • Graham County

2 FOREST HERITAGE SCENIC BYWAY

Take off on U.S. 276 North from Brevard on the Forest Heritage Scenic Byway to see the Cradle of Forestry, the Pink Beds and Shining Rock Wilderness.

65 miles • 2 hours

Haywood, Transylvania and Jackson Counties

3 INDIAN LAKES SCENIC BYWAY

Where NC 28 meets U.S. 129 near the Tennessee border, fans of crystalline lakes (especially those featuring Indian names) will find their calling. Just leave what's known as "The Dragon" and discover the first landmark, Fontana Dam. From there, you'll have a hard time watching the road as you pass the likes of Fontana Village and Stecoah on the way to the byway's meandering end.

57 miles • 1.5 hours

Swain, Graham and Cherokee Counties



4 NANTAHALA BYWAY

The Cherokee used “Nantahala” to mean “Land of the Noonday Sun.” Why noonday? Well, likely for the steep walls that frame the Nantahala Gorge from the morning sun, an impressive site you’ll tour as part of this swirling byway. Nearby, the Nantahala River has become legendary for its whitewater. Just depart from Marble, head east and don’t stop until you pass Wesser.

43 miles • 1.5 hours

Cherokee, Graham, Jackson and Swain Counties

5 SMOKY MOUNTAIN SCENIC BYWAY

Travel through the Great Smoky Mountains National Park, renowned for its diverse plant and animal life. A trip along this road puts you in close proximity to some of North Carolina’s most captivating wildlife, and gives a glimpse of the Southern Appalachian pioneer culture that once dominated the region. Just hop off the Blue Ridge Parkway onto U.S. 441 near the Qualla Boundary of the Cherokee Indian Reservation and head north into Tennessee.

16.5 miles • 35 minutes • Swain County

6 WATERFALL BYWAY

Strangely powerful or eerily tranquil, waterfalls do have a way of casting a spell. If you happen to be a fan, this is your byway. Winding 98 miles and featuring more than 200 distinct waterfalls, it begins at U.S. 64’s intersection with NC 215. Where it ends is likely somewhere far deeper within you.

98 miles • 3.5 hours

Clay, Jackson, Macon and Transylvania Counties

7 WHITEWATER WAY

Quick: You have three guesses as to what you’ll encounter on this scenic byway. The aptly named Whitewater Way is named for Whitewater Falls, which is the highest waterfall east of the Rockies. Take NC 281 and hike the many trails leading to spectacular rushing water. Bathroom breaks are a must.

9 miles • 20 minutes

Transylvania and Jackson Counties

Chasing Waterfalls

	WATERFALLS	TOWN	COUNTY
1	Big Laurel Falls & Mooney Falls	Otto	Macon
2	Bridal Veil Falls	Highlands	Macon
3	Bust-Yer-Butt Falls	Highlands	Macon
4	Carlton Falls	Sapphire	Jackson
5	Chasteen Creek Falls	Cherokee	Swain
6	Courthouse Falls	Balsam Grove	Transylvania
7	Cullasaja Falls	Franklin	Macon
8	Dry Falls	Highlands	Macon
9	Frolictown Falls	Sapphire	Jackson
10	Glen Falls	Highlands	Macon
11	Gina Falls	Sylva	Jackson
12	Granny Burrell Falls	Sapphire	Jackson
13	Greenland Creek Falls	Sapphire	Jackson
14	High Falls	Glenville	Jackson
15	Indian Creek Falls	Bryson City	Swain
16	Jawbone Falls	Glenville	Jackson
17	Juney Whank Falls	Bryson City	Swain
18	Leatherwood Falls @ Fires Creek	Hayesville	Clay
19	Looking Glass Falls	Brevard	Transylvania
20	Mingo Falls	Cherokee	Qualla Boundary

WATERFALL NUMBERS CORRESPONDS WITH FOLD-OUT MAP

DESCRIPTION

Easy 0.5-mile trail, 30-foot cascading falls, tumbles into pool.

Visible from U.S. 64, waterfall drops 45 feet, can walk behind.

Popular swimming hole, can jump off a boulder.

In Panthertown Valley, variety of photo ops.

Great stop for campers staying at Smokemont Campground.

Hike 1/2 mile, pool at base is deep, water is clear & cold.

250 foot falls, cascades viewable from road, safest approach on Franklin side.

Also known as Upper Cullasaja Falls, 65-foot fall, NW of Highlands.

15-foot waterfall, vertical drop, great stop on Great Wall Trail.

One-mile trail hike is steep & rough but consist of three 60 foot falls each.

In Pinnacle Park, near urban area, 35-foot upper drop with cascades below.

Kid-friendly-sliding, swimming, sunbathing @ beach, large pool.

Steep cascade drops on boulder ledges, cascades into deep pool.

Also known as Cullowhee Falls, has two-section free fall over cliff.

Easy 1.6 mile round trip hike allows you to enjoy two beautiful waterfalls.

Small island downstream & a pool, picturesque spot.

Divided in upper & lower, both viewed from footbridge, 90 foot drop.

75-foot falls visible from picnic area. Paved trail, great for kids!

Roadside gorgeous views, just off Blue Ridge Pkwy, near Brevard.

120 foot high, tallest in the southern Appalachians.



	WATERFALLS	TOWN	COUNTY
21	Moses Creek Falls	Cullowhee	Jackson
22	Mouse Creek Falls	Waynesville	Haywood
23	North Shoal Creek Falls	Murphy	Cherokee
24	Rainbow Falls	Brevard	Transylvania
25	Rock Slab Falls	Cherokee	Swain
26	Rough Butt Creek Falls	Cullowhee	Jackson
27	Rufus Morgan Falls	Franklin	Macon
28	Sassafras Falls	Robbinsville	Graham
29	Secret Falls	Highlands	Macon
30	Schoolhouse Falls	Sapphire	Jackson
31	Silver Run Falls	Cashiers	Jackson
32	Sliding Rock	Brevard	Transylvania
33	Soco Falls	Maggie Valley	Jackson
34	Tom Branch Falls	Bryson City	Swain
35	Toxaway Falls	Brevard	Transylvania
36	Whitewater Falls	Cashiers	Jackson
37	Yellow Creek Falls	Robbinsville	Graham

WATERFALL NUMBERS CORRESPONDS WITH FOLD-OUT MAP

DESCRIPTION

Calling all daredevils: 100-foot, a bit difficult to see, steep.

Tiered water cascades, swimming, popular & beautiful.

Stunning 30-foot tall, cascades over rock layers, offers tranquility.

Exceptionally beautiful, 150 ft. enormous falls-near Gorges St. Park.

Gentle waterfall, sparkling bands of quartz.

30-foot waterfall falls, small pool and rocks coated in moss.

West of Franklin-65 foot falls, 1 mi. hike, family friendly.

This is an interior trail with a noted fishing spot.
Moderate to Strenuous.

50-foot Hidden Oasis, (known: Big Shoals Falls) cascades
into serene pool.

Best in Summer, 18-foot falls of Panthertown Valley,
a mix of cascades.

200 yard trail, 25-foot falls, observation points.

Near Brevard, sliders ride water 60-foot flat, 8 ft. pool.

5-minute trail, double waterfall-edge of Cherokee Indian Reservation.

Wide path, 80-foot falls, many benches to admire the falls.

150-foot falls, seen by car, U.S. 64 E. near Rosman.

Highest falls E. of Rockies, falling 811 feet-Nantahala Nat'l Forest.

Gorgeous falls-Nantahala Nat'l Forest, easy trail, swimming hole.

ncwaterfalls.info
visitsmokies.org/waterfalls

Experience BRYSON CITY

42 MILES ← FROM FRANKLIN

31 MILES → TO FONTANA



10 MILES TO CHEROKEE, QUALLA BOUNDARY

GATEWAY TO GREAT SMOKY MOUNTAIN NATIONAL PARK AND PART OF APPALACHIAN TRAIL

3 VIBRANT RECREATION AREAS IN BRYSON CITY:

- ★ **DEEP CREEK** – Known for Camping, Hiking, Mountain Biking, Picnicking, Tubing & Waterfall: Tom Branch Falls
- ★ **THE NANTAHALA GORGE** – World-Class Whitewater Destination
- ★ **TSALI RECREATION** – One of the Finest Mountain Biking Trail Systems in the country.

HIDDEN GEMS AND POPULAR ATTRACTIONS:

- ★ **THE ROAD TO NOWHERE** – Find out the story behind “The Road to Nowhere.” explorebrysoncity.com
- ★ **TUBING ON DEEP CREEK** – Family Fun for the entire day! Experience the thrill of riding an Inner Tube down the rapids in the GSM National Park. Tubing Season: **Memorial Day Weekend through Labor Day.**

GREATSMOKIES.COM ★ EXPLOREBRYSONCITY.COM

AGRITOURISM

Darnell Farms

Family Fun farmer's market, 80 acres, riverside camping, events. 8am-7pm, Sun 9am-6pm
2300 Governors Island Road
Bryson City, NC 28789
828-488-2376
Darnellfarms.com

Swain County Farmer's Market

Organic produce, plants, honey, jams as well as an array of local crafts. 9am to 2pm on Fridays from May through October.
117 Island St.
Bryson City, NC 28713
828-488-7857
facebook.com/
swaincountyfarmersmarket

BLUEWAYS

The Nantahala River

A popular spot offering river rafting and kayaking through family-friendly rapids. It features eight miles of Class II rapids before splashing through the exciting Class III whitewater of Nantahala Falls.



CULTURAL MUSEUMS

Smoky Mountain Train Museum

Catch the spirit of model railroading. Museum ranked in top ten in the United States. GSMR-owned and operated.
100 Greenlee St.
Bryson City, NC 28713
828-488-5200 • 866-872-4681
gsmr.com/smoky-mountain-trains-museum

**Appalachian Rivers Aquarium**

Appalachian Rivers Aquarium is a small, native species aquarium on the banks of the Tuckaseegee River in downtown Bryson City.
117 Island St.
Bryson City, NC 28713
828-488-7857
explorebrysoncity.com

Fly Fishing Museum of the Southern Appalachians

Exhibits/videos of legendary "Stream Blazers," evolution of rods/reels, knots, fly-tying, gear, gamefish, history.
117 Island St.
Bryson City, NC 28713
828-488-7857
flyfishingmuseum.org

Swain County Heritage Museum

Photos, exhibits, video about life of early settlers in small mountain communities. Children's activity area.
2 Everett St.
Bryson City, NC 28713
828-488-7857 • 800-867-9246
swainheritagemuseum.com

DINING

Big Wesser

Riverside casual dining with live music at the Appalachian Trail and Nantahala River. Seasonal, pets welcome.
13077 Hwy 19 W
Bryson City, NC 28713
828-488-7174 • noc.com

**River's End Restaurant**

An iconic riverside restaurant known for delicious food and stunning Nantahala River views from every seat.
13077 Hwy 19 W
Bryson City, NC 28713
828-488-7172 • noc.com

**Jack the Dipper Ice Cream**

Home of the Warm Waffle Cone. Inside Heavenly Fudge Shop
225 C Everett St
Bryson City, NC 28713
828-488-4447
jackthedipper.com

Fryemont Inn

Full country breakfast, four-course dinners. Prime rib, lamb & trout, full bar, fine wines.
245 Fryemont St.
Bryson City, NC 28713
828-488-2159 • 800-845-4879
fryemontinn.com



DINING

Pop-N-Jacks Gourmet Popcorn

If you haven't tried Pop-N-Jacks gourmet popcorn, you don't know Jack.

225-B Everett St.

Bryson City, NC 28713

828-620-3931

pop-n-jacks.com

3 Little Bears Retreat

An intimate destination wedding venue in the Smokies, featuring long-range mountain views, private property buyouts, and thoughtfully curated guest experiences.

147 Nuwati Way

Bryson City, NC 28713

828-538-0306

3littlebearsretreat.com



GEM MINES & SHOPS

Nantahala River Gem Mining

Family gemstone mining adventures near Nantahala River and Bryson City. Find rubies, emeralds, sapphires.

12 Country Rd

Bryson City, NC 28713

828-736-0785

carolinaoutfitters.com

LODGING

NOC Bryson City Cabins & Bungalows

Cozy mountainside cabins, full amenities, steps from rafting, hiking trails, and riverside dining. Pet-friendly.

13077 Hwy 19 W

Bryson City, NC 28713

828-785-5018 • 800-232-7238

noc.com



Rest * Relax * Rejuvenate

On the
National Register
of Historic Places

OVERLOOKING THE GREAT SMOKY
MOUNTAINS NATIONAL PARK

Historic Main Lodge, Cabin, Cottage Suites, Balcony Suites, Pool, Fireside Bar, Country Breakfast & Four Course Dinner Included.

*“Over 100 Years of
Good Times and Great Food!”*

FRYEMONT INN



“A MOUNTAIN TRADITION OF GOOD TIMES & GREAT FOOD”



FryemontInn.com 828-488-2159 • 245 Fryemont St | Bryson City, NC



Every Season Brings
New Reasons to Smile

DARNELL FARMS IS A WORKING, FAMILY-OWNED FARM OFFERING FRESH FLAVORS, HANDS-ON EXPERIENCES, AND SEASONAL TRADITIONS YEAR-ROUND.



Don't miss out on our renowned Dreamwhip Soft Serve, featuring delightful seasonal flavors!



EXPERIENCE HIGHLIGHTS

From our fields to your family — welcome to the farm.

U-PICK EXPERIENCES THROUGHOUT THE YEAR
SEASONAL FESTIVALS & HAYRIDES FOR ALL AGES
FARM STORE FEATURING LOCAL FAVORITES
RIVERFRONT SEATING WITH MOUNTAIN VIEWS
FIELD TRIPS & GROUP EVENTS

Come experience the farm where memories are made.



Real Family Fun on a Real Family Farm
2300 Governors Island Rd. Bryson City, NC
WWW.DARNELLFARMS.COM
(828) 488-2376



SCAN BELOW TO BOOK NOW!
USE CODE: VISITSMOKIES FOR 10% OFF

📞 828-488-4630

🌐 www.stonewoodcabins.com

📧 info@stonewoodcabins.com



LODGING

3 Little Bears Retreat

An all-inclusive adventure eco-retreat bordering the Great Smoky Mountains National Park, where culture, nature, and immersive mountain experiences come together. 147 Nuwati Way
Bryson City, NC 28713
828-538-0306
3littlebearsretreat.com



Long View Resort

Long View Resort in Bryson City offers a Nordic-themed retreat with stunning Appalachian views and personalized concierge services. Enjoy a perfect mountain escape. 101 Longview Pass
Bryson City, NC 28713
828-273-7537
longviewresort.com

Riverbend Lodging

Clean, riverfront rooms are available in this small, family owned motel! Our location is less than 1 mile from Bryson City's Main St. & train depot. 470 Highway 19 S
Bryson City, NC 28713
828-488-9476
riverbendlodging.com

Hemlock Inn

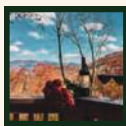
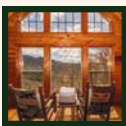
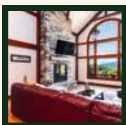
Hemlock Inn is best known for three things: genuine hospitality, an unbeatable mountain view, and the mealtime experience. Come, disconnect with us. 911 Galbraith Creek Rd
Bryson City, NC 28713
828-488-2885
hemlockinn.com

Sky Ridge Yurts

Ready to break out of the regular cabin routine? Come experience Sky Ridge. 200 Sky Ridge Drive
Bryson City, NC 28713
704-701-5696
skyridgeyurts.com

Stonewood Cabins

Luxury vacation home rental agency with properties outside of Bryson City, including Watershed Resort. 33 Island Street
Bryson City, NC 28713
828-222-0802
Stonewoodcabins.com



*Browse our
90+ cabins
& plan your
Great Escape!*

📞 828-488-4630

✉ rentals@gscrcnc.com

🌐 greatsmokyscabinrentals.com

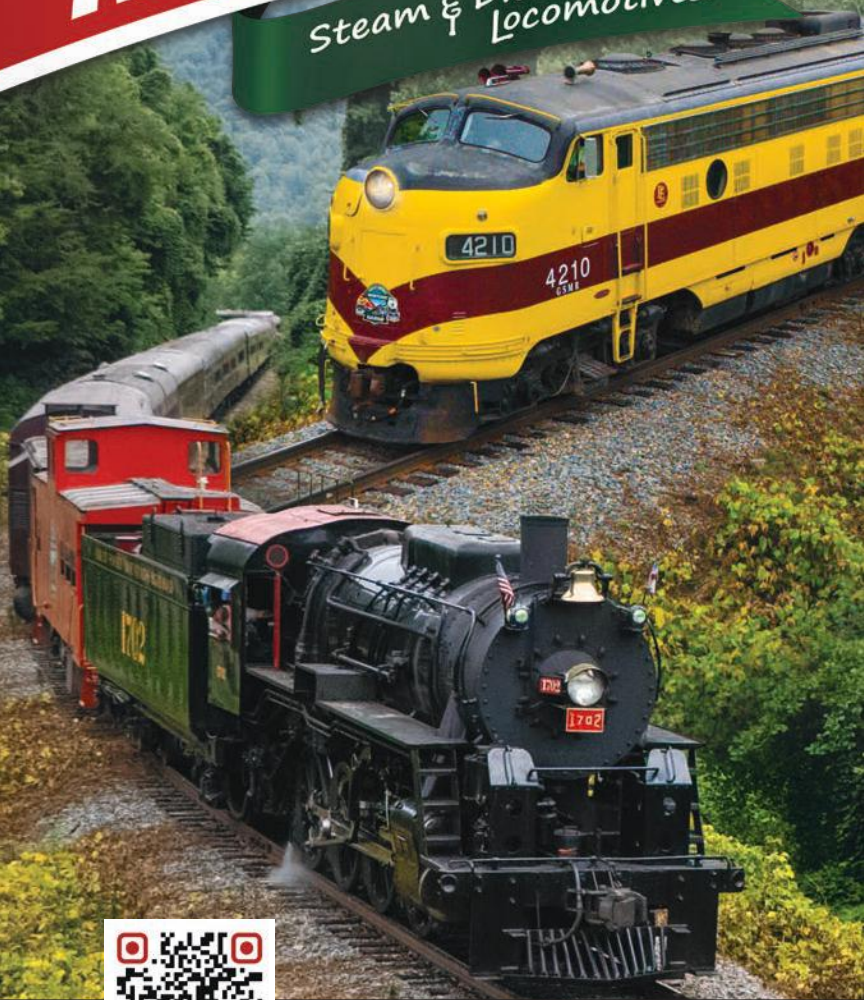
Use Code
VISITSMOKIES
For 10% Off



Scenic
Excursions!

ALL ABOARD!

Steam & Diesel
Locomotives!



Scan, call or book online
800-872-4681 • GSMR.com

Special Events • Steam and Diesel Options
Fun for all ages • Adventure packages
The POLAR EXPRESS™ Train Ride

Located nearby
45 Mitchell Street • Bryson City, NC



3 LITTLE BEARS RETREAT

Venture into the Back of Beyond of the Smoky Mountains



A Luxury Safari-Styled Lodge Experience in the Smokies

- All-inclusive mountain hikes and other adventures
- Safari Wildlife tracking by classic Land Rover
- Award-winning Chef Farm-to-table Appalachian dining
- Restorative Spa & Wellness
- Lodging, guides, dining & experiences included



Call for Weddings & Buyouts
Bryson City, NC
828-538-0306
3littlebearsretreat.com

LODGING

Lakeview at Fontana

Soul-nurturing spaces where guests can disconnect from devices and reconnect to nature is the mission for Lakeview at Fontana. Widely known for our picturesque Treetop Soaking Cabanas that are designed for pure relaxation.

171 Lakeview Lodge Drive
Bryson City, NC 28713
800-742-6492
Lakeviewatfontana.com

Fryemont Inn

Historic inn on national register. Breakfast and dinner included, restaurant, bar, swimming pool, fireplace, suites.
245 Fryemont St.
Bryson City, NC 28713
828-488-2159 • 800-845-4879
fryemontinn.com



Sleep Inn

One mile from Great Smoky Mountains Railroad. Minutes from Cherokee Indian Reservation, and Harrah's Cherokee Casino.
500 Veterans Blvd.
Bryson City, NC 28713
828-488-0326
sleepinbrysoncitync.com

Nantahala Cabins, Inc.

Your getaway in Bryson City near the Nantahala River. Cabin rentals & adventure planning. Hot tubs, fireplaces, picnic areas with firepits. Pet-friendly. Family-owned. Enjoy 10% off your getaway w/ Promo Code: VisitSmokies
580 Nantahala Cabins Ln.
Bryson City, NC 28713
828-488-1622
nantahalacabins.com



McKinley Edwards Inn

Charming historical inn with stunning views of the Smoky Mountains, clean, comfortable rooms, delicious breakfast.
208 Arlington Ave.
Bryson City, NC 28713
828-488-9626
mckinleyedwardsinn.com

NOC

NANTAHALA OUTDOOR CENTER

SOUTHEAST'S PREMIER ADVENTURE RESORT

Explore 500 acres of adventure, shopping, dining, & lodging in Bryson City.



ADVENTURE | LODGING | DINING | noc.com

LODGING

Calhoun House Inn & Suites

Affordable, 4 and 5-room luxury suites, private baths, private entrances, A/C, king beds, full kitchens, WiFi, HBO.
110 Bryson Ave.
Bryson City, NC 28713
828-788-0505
ed@calhounhouse.com
calhounhouse.com



Great Smokys Cabin Rentals

We have vacation cabins for everyone, hot tubs, game rooms, spectacular views, pets welcome.
1181 Main St.
Bryson City, NC 28713
828-488-4630 • 800-655-9771
gscrnc.com



Two Rivers Lodge

American Family Owned & Operated motel, cabins, kitchenettes, porches, pool, riverside, park, bonfire, pavilion, grills, fishing.
5280 Ela Rd.
Bryson City, NC 28713
828-488-2284
tworiverslodgenc.com

CAMPGROUND

Brookside Campground & Rafting

Whitewater rafting available from campground. Creekside sites, country store.
764 U.S. Hwy 19
Nantahala, NC 28781
828-321-5209 • 800-848-7238
brooksiderafting@gmail.com
brooksiderafting.com

OUTDOOR ACTIVITY

Great Smoky Mountains Railroad

Join us on board the Great Smoky Mountains Railroad for a fantastic journey!
45 Mitchell St.
Bryson City, NC 28713
828-586-8811 • 800-872-4681
gsmr.com



NOC Outdoor Adventure

Riverfront adventure resort with rafting, ziplining, 100+ outdoor experiences, lodging, and dining.
13077 Hwy 19 W
Bryson City, NC 28713
800-232-7238 • noc.com



Fly Fishing the Smokies

Premier guide service offering all-inclusive guided fly fishing adventures in the beautiful Smoky Mountains.
157 Everett St
Bryson City, NC 28713
828-421-6378
flyfishingthesmokies.net/
bryson-city

Tuckasegee Fly Shop

A Bryson City favorite offering quality gear, expert advice, and mountain-water insight for unforgettable Smokies fly fishing.
3 Depot St
Bryson City, NC 28713
828-488-3333
tuckflyshop.com





Homemade Jams



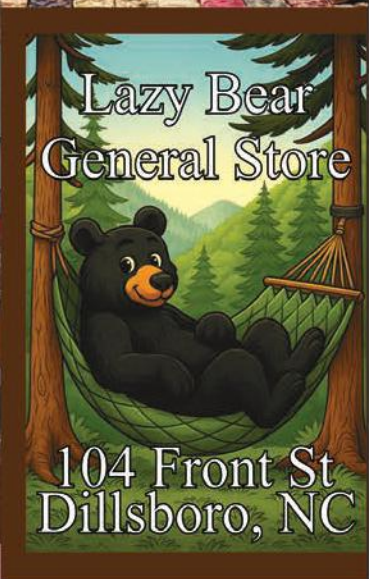
Locally Roasted Coffees



Local Soaps



Souvenir Shirts



Lazy Bear General Store

104 Front St
Dillsboro, NC

OUTDOOR ACTIVITY

Indian Creek Falls

An easy one-mile hike from Deep Creek Campground in the Great Smoky Mountains National Park brings you to this gorgeous 60-foot waterfall.

nps.gov/grsm/planyourvisit/indian-creek-toms-branch-falls.htm



Appalachian Trail to Charlie's Bunion

4 miles, moderate/difficult Trailhead: Newfound Gap parking area. This four-mile stretch offers spectacular views of the Smokies. appalachiantrail.org



Nantahala Byway

The Nantahala Byway runs from Whittier to Murphy via the Nantahala Gorge. 43 miles • 1.5 hours. Travels through Swain, Jackson, Graham and Cherokee counties.



Deep Creek

Fishing, waterfalls, hiking and horse trails, tubing, picnicking, and campground open May-October.



JEEP EXCURSION

Wildwater Nantahala Gorge Adventure Center

Fully guided Jeep tours on the Nantahala and Big Pigeon Rivers. 10345 Hwy 19 W Bryson City, NC 28713 866-319-8870 wildwaterrafting.com



RAFTING/KAYAKING

Nantahala Outdoor Center

Family-friendly rafting & paddling school for all skill levels—named Good Morning America's "#1 Vacation with a Splash!" 13077 Hwy 19 W Bryson City, NC 28713 800-232-7238 noc.com



Carolina Outfitters Whitewater Rafting

Call us for Nantahala & Ocoee River Family Whitewater Rafting Adventures, Vacation Rental Houses, Gemstone Mining, Zip Lining, Horseback Riding & Smoky Mountain Train Tours. 715 U.S. Hwy 19 Topton, NC 28781 828-488-6348 • 828-488-6345 carolinaoutfitters.com

Brookside Campground & Rafting

Whitewater rafting available from campground. Creekside sites, country store. 764 U.S. Hwy 19 Nantahala, NC 28781 828-321-5209 • 800-848-7238 brooksiderafting@gmail.com brooksiderafting.com

Rolling Thunder River Company

The preferred rafting company for over 40 years. Family-friendly trips daily during season. Book online. 10160 Hwy 19 W Bryson City, NC 28713 800-408-7238 rollingthunderriverco.com

RAFTING/KAYAKING

Wildwater Nantahala Gorge Adventure Center



Fully guided, guide assisted, and rental trips on Nantahala, Ocoee, Big Pigeon, and Chattooga Rivers.
10345 Hwy 19 W
Bryson City, NC 28713
866-319-8870
wildwaterrafting.com

ZIPLINING

Nantahala Outdoor Center



NC's premier zipline destination with a mountaintop mega zip, ropes courses, and family-friendly adventures.
13077 Hwy 19 W
Bryson City, NC 28713
800-232-7238 • noc.com

Wildwater Nantahala Gorge Adventure Center



With 5 full length zipline courses across GA, SC, TN, and NC, plus 2 popular Kid Zips for the youngest flyers. Wildwater has you covered.
10345 Hwy 19 W
Bryson City, NC 28713
866-319-8870
wildwaterrafting.com

REAL ESTATE

Good Life Real Estate

Your Boutique Mountain Firm Mountain and Lake, Luxury Log/Modern Homes. Vacation Rental/Second Home Investments. Land, New Construction.
162 Everett St.
Bryson City, NC 28713
828-318-8811
goodliferealestateco.com

SHOPPING

NOC Outfitter's Store



An outdoor gear hub with paddlesports essentials, apparel, footwear, and local goods for hikers and explorers.
13077 Hwy 19 W
Bryson City, NC 28713
828-488-7230 • noc.com

Wesser General Store



One-stop shop for snacks, sundries, souvenirs, beer, and wine.
13077 Hwy 19 W
Bryson City, NC 28713
828-488-7226 • noc.com

Pop-N-Jacks Gourmet Popcorn

If you haven't tried Pop-N-Jacks gourmet popcorn, you don't know Jack.
225-B Everett St.
Bryson City, NC 28713
828-620-3931
pop-n-jacks.com

Uncle Bunky's T-Shirt Shop

T-Shirts make memories! Caps, bags, stuffed animals, novelties
150 Everett Street
Bryson City 28713
828-788-1550
facebook.com/Uncle-Bunkys-T-Shirt-Shop

Heavenly Fudge Depot

Fudge, chocolate, truffles, candy, coffee, drinks.
225 C Everett Street
Bryson City, NC 28713
828-488-4447
fudgedepot.com

VISITOR INFORMATION



Swain County Chamber of Commerce

Greatsmokies.com

Swain County Visitor Center



Visitor information, maps, brochures, travel guides, Heritage Museum, National Park Gift Shop, public restrooms, and lodging information.
2 Everett St.
Bryson City, NC 28713
828-488-7857

Swain County Tourism Development Authority



Visitor information, maps, brochures, travel guide, lodging information.
828-488-7857
ExploreBrysonCity.com



Experience CHEROKEE

33 MILES ← FROM WAYNESVILLE

16 MILES → TO SYLVA



37 MILES FROM FRANKLIN, NC

HOME OF THE EASTERN BAND OF CHEROKEE
INDIANS

CHEROKEE HOSTS AN ARRAY OF YEARLY
FESTIVALS AND EVENTS STEEPED IN ART,
CULTURE AND DEEP HISTORY OF THE TRIBE

HIDDEN GEMS AND POPULAR ATTRACTIONS:

- ★ **FIRE MOUNTAIN TRAILS** – Multi-use trail system made for mountain biking, hiking or running, 10.5 miles.
- ★ **OCONALUFTEE ISLANDS PARK** – Great place for a picnic, grilling and wading. Excellent walking trail.

VISITCHEROKEENC.COM

BLUEWAYS

Oconaluftee River

Oconaluftee, considered sacred waters by the Cherokee, is a beautiful freestone river that drops 2,000 feet over 10 miles. Wading, tubing and canoeing are all popular activities found on the river. It's most famous for its abundant and healthy rainbow, brook and brown trout. In fact, it holds the North Carolina Record Brown Trout, weighing in at 15.9 pounds. smokymountainblueways.com



CASINO

Harrah's Cherokee Casino and Resort



150,000 square foot gaming floor, 10+ dining options, shopping, hotel, pool, spa, 3,000-seat Events Center, WSOP Poker Room and more!
777 Casino Dr.
Cherokee, NC 28719
828-497-7777 • 877-811-0777
caesars.com/harrahs-chokeee

CULTURAL/MUSEUM

Museum of the Cherokee People

Artifacts from a culture nearly lost—waiting to be discovered.
589 Tsali Blvd.
Cherokee, NC 28719
828-497-3481 • motpc.org



Oconaluftee Indian Village Living Museum

Living history museum documenting 18th-century Indian village.
218 Drama Rd.
Cherokee, NC 28719
800-438-1601
visitchokeeeenc.com



Great Smokys Cannabis Company

Great Smoky Cannabis Company is North Carolina's only legal adult-use dispensary, offering a safe and elevated cannabis experience. (21+)
91 Bingo Loop Rd
Cherokee, NC 28719
828-508-5758
greatsmokycannabisco.com



Mountain Farm Museum

Collection of historical log buildings and artifacts.
150 U.S. 441 North
Oconaluftee Visitor Center
Cherokee, NC 28719
828-497-1904 • nps.gov/grsm



DINING

Harrah's Cherokee Casino and Resort



SOCO Smokehouse

Indulge in your favorite classics like brisket, ribs, and pulled pork. Swing by and taste the difference slow-smoked goodness makes.
Harrah's Cherokee Casino and Resort



Gordon Ramsay Food Market

Choose from a variety market style concepts featuring pizza, burgers, sushi, fish and chips, street tacos and more.
Harrah's Cherokee Casino and Resort



Ruth's Chris Steak House

USDA Prime steaks served in Ruth's Chris' signature style—sizzling hot on a 500-degree plate.
Harrah's Cherokee Casino and Resort



Guy Fieri's Cherokee Kitchen + Bar, Soco Smokehouse, The Coop at Soco Smokehouse, Noodle Bar, G/R Truffles Pub, Starbucks

Harrah's Cherokee Casino and Resort



Selu Garden Café

Southern style all-you-can-eat buffet, stacked sandwiches and more with tables overlooking Soco Creek.



UltraStar Sports Bar & Grill

Wings, build-your-own pizza, juicy burgers, hearty salads, and plenty more.



DINING

Heavenly Fudge Depot

"Heavenly Fudge" legend began in 1976. Free to taste of fudge, chocolates & coffee. Hand-dipped chocolates. Novelty candies & more.
27 Big Cove Rd.
Cherokee, NC 28719
828-497-7367

FAMILY ATTRACTION

Oconaluftee Indian Village

Walk among the living culture of the Cherokee, circa 1750.
218 Drama Rd.
Cherokee, NC 28719
828-497-2111 • 866-554-4557
cherokeeadventure.com



Mountainside Theatre

Home to Unto These Hills, a historic outdoor drama that runs in the summer. In the spring and fall, it is host to Alice in Wonderland and Dracula.
688 Drama Rd.
Cherokee, NC 28719
828-497-2111
cherokeehistorical.com

Ultra Star Multi-Tainment Center

Harrah's Cherokee, hottest new arcade games, Strikes Lounge, boutique bowling, billiards, packages, events, parties.
777 Casino Dr.
Cherokee, NC 28719
828-497-8818
ultrastarn.com



FISHING/HIKING GUIDES

EBCI Fisheries & Wildlife Management

We invite you to fish in our ancestral homelands. Waters are cold, fishing is great.
1840 Painttown Rd.
Cherokee, NC 28719
828-788-3013
fishcherokee.com



Rivers Edge Outfitters

Fishing gear, clothing, guide trips, rods, reels, bait, flies, classes, permits, flyfishing.
61 Big Cove Rd.
Cherokee, NC 28719
828-497-9300
wncfishing.com

GOLF COURSE

Sequoyah National Golf

18 Hole Robert Trent Jones II Design - Renovated 2020.
45 minutes west of Asheville, heart of Great Smoky Mountains. Open to the public. Book your tee times @ sequoyahnational.com
79 Cahons Rd.
Whittier, NC 28789
828-497-3000



LODGING

Fairfield Inn and Suites

Located in the Casino District. Across the street from Harrah's Casino on Hwy 19. Amenities: Hot Breakfast Buffet included with room, Renovated Exercise Facility, New Patio furniture and outdoor grills.
568 Paint Town Rd.
Cherokee, NC 28719
828-497-0400 • 800-228-2800
marriott.com/avlck



Cherokee Inn

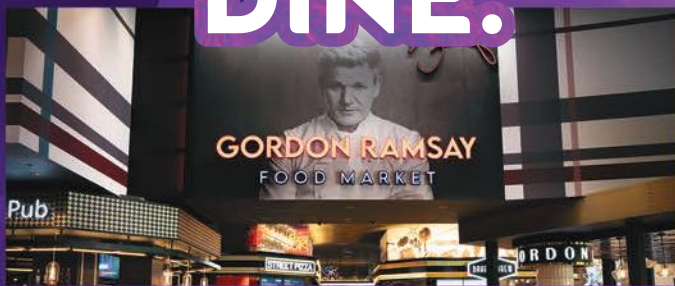
Newly remodeled. Close to Harrah's Casino. Open year-round. Refrigerators, microwaves in every room.
185 Tsalagi Rd./Hwy 19
Cherokee, NC 28719
828-497-3115 • 800-426-7866
cherokee.hamptoninn.com

CAMPGROUND

Fort Wilderness RV Park

Pull-thru's, bathhouses, DirectTV, cabins, basketball, shade, paved, horseshoes, peaceful, pool, playground, security, gameroom, Wifi, pavilion.
284 Ft. Wilderness Rd.
Cherokee, NC 28789
828-497-9331
fortwilderness.net

DINE.



PLAY.



STAY.



Harrah's[®] CHEROKEE CASINO RESORT

Subject to change or cancellation. Must be 21 or older to enter casino floor and to gamble, and must present a valid state or federal photo ID upon request. Know When To Stop Before You Start @ Gambling Problem? Call 1-800-522-4700. An Enterprise of the Eastern Band of Cherokee Indians. ©2025, Caesars License Company, LLC.

LODGING

Smokemont

Open year-round weather permitting. Camping, picnic, restrooms, trailer space, drinking water, handicap-accessible, hiking trail, horse trail, fishing, scenic views, information, fee required.

recreation.gov/camping/campgrounds/232486



Entrance to the Blue Ridge Parkway and Great Smoky Mountains National Park

Open year-round weather permitting.



OUTDOOR ACTIVITY

Bonfire

Spend an evening by a roaring bonfire among Cherokee storytellers and dancers as they tell tales and dance traditional dances of days gone by.

visitchokeenc.com/events/detail/Cherokee-bonfire



Mingo Falls

This 200-foot scenic waterfall is a five-minute walk from the Mingo Falls Campground on the Cherokee Indian Reservation. nps.gov/grsm/planyourvisit/mingo-falls.htm



Soco Falls

Just north of Cherokee, this waterfall runs down the slope of Soco Bald.

facebook.com/SocoFalls



Immerse Yourself in Authentic Cherokee Culture

Oconaluftee
Indian Village
guided tours & live
demos April 21 - Oct 31
Self-guided tours
March 4 - April 4

Unto These Hills
outdoor drama
May 30 - August 22

Free admission for
children 5 & under
Group discounts
available

Book now at
CherokeeHistorical.org

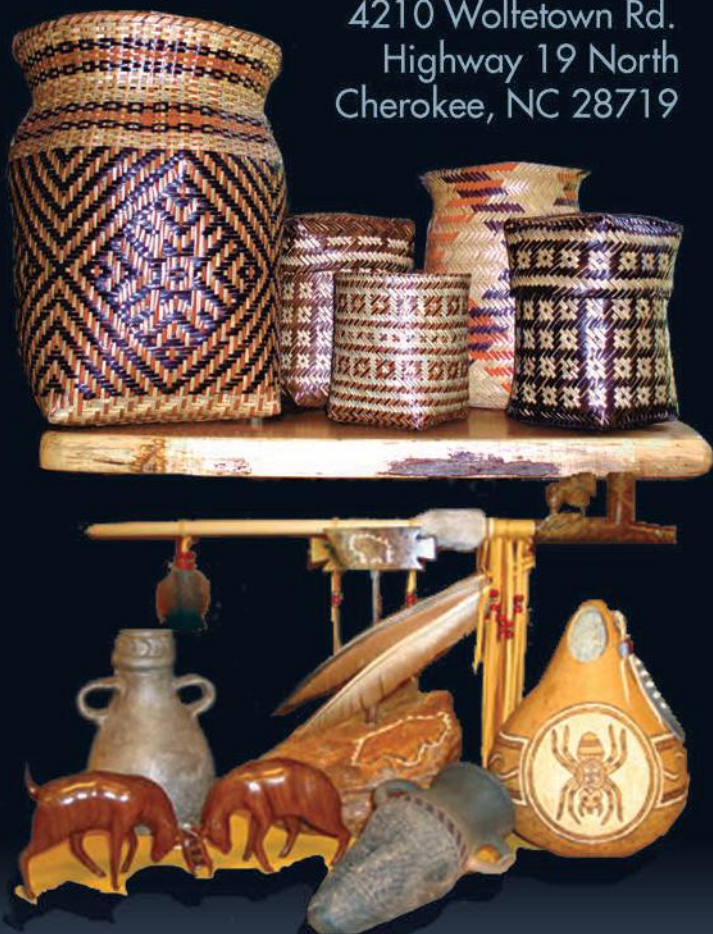


Authentic Indian Art

BEARMEAT'S INDIAN DEN



Open Year Round 7 Days A Week
4210 Wolfetown Rd.
Highway 19 North
Cherokee, NC 28719



bearmeats-indian-den.com

828-497-4052 bearmeatsindianden@gmail.com

HORSEBACK RIDING

Smokemont Riding Stables

Authorized NPS Concessioner offering guided horseback riding within the Great Smoky Mountain National Park.
135 Smokemont Riding Stables Rd. (off Hwy 441)
Cherokee, NC 28719
828-497-2373
smokemontridingstable.com

SHOPPING

Qualla Arts and Crafts Mutual

Shop over 3,000 authentic baskets, jewelry, carvings and more made by Cherokee Indian co-op members.
645 Tsalii Blvd.
Cherokee, NC 28719
828-497-3103
quallaartsandcrafts.com



Qualla Arts
AND CRAFTS MUTUAL, INC.

Bearmeat's Indian Den

Founded to present only the best in local arts and crafts, created in the homes of our local people of Cherokee. Summer and fall; several weekends of "hands-on" demonstrations. Open year-round.
4210 Wolfetown Rd
Cherokee, NC 28719
828-497-4052
bearmeats-indian-den.com

Traditional Hands Native American Jewelry & Art Gallery

Gallery & Jewelry shop featuring master silversmith General B Grant & other native artists from several tribes.
970 Tsalagi Rd
U.S. 19/U.S. 441 (Bus)
Cherokee, NC 28719
828-554-5884
traditionalhands.com



DISPENSARY

Great Smoky Cannabis Company

Great Smoky Cannabis Company is North Carolina's only legal adult-use dispensary, offering a safe and elevated cannabis experience. (21+)
91 Bingo Loop Rd
Cherokee, NC 28719
828-508-5758
greatsmokycannabisco.com



VISITOR INFORMATION

EBCI Fisheries & Wildlife Management

We invite you to fish in our ancestral homelands. Waters are cold, fishing is great.
1840 Painttown Rd.
Cherokee, NC 28719
828-788-3013
fishcherokee.com



Cherokee Welcome Center

Come experience 11,000 years of soul-stirring Cherokee history, culture, art, legend, tradition and events.
498 Tsalii Blvd.
Cherokee, NC 28719
800-438-1601
visitcherokeenc.com



Soco Falls



**WHERE LEGALITY
MEETS QUALITY**

**WORLD'S LARGEST
DISPENSARY**

**91 BINGO LOOP RD
CHEROKEE, NC**

THIS IS A CANNABIS PRODUCT FOR
ADULT USE ONLY (21+)
KEEP OUT THE REACH OF CHILDREN

FIND YOURSELF. FIND YOUR SPIRIT.

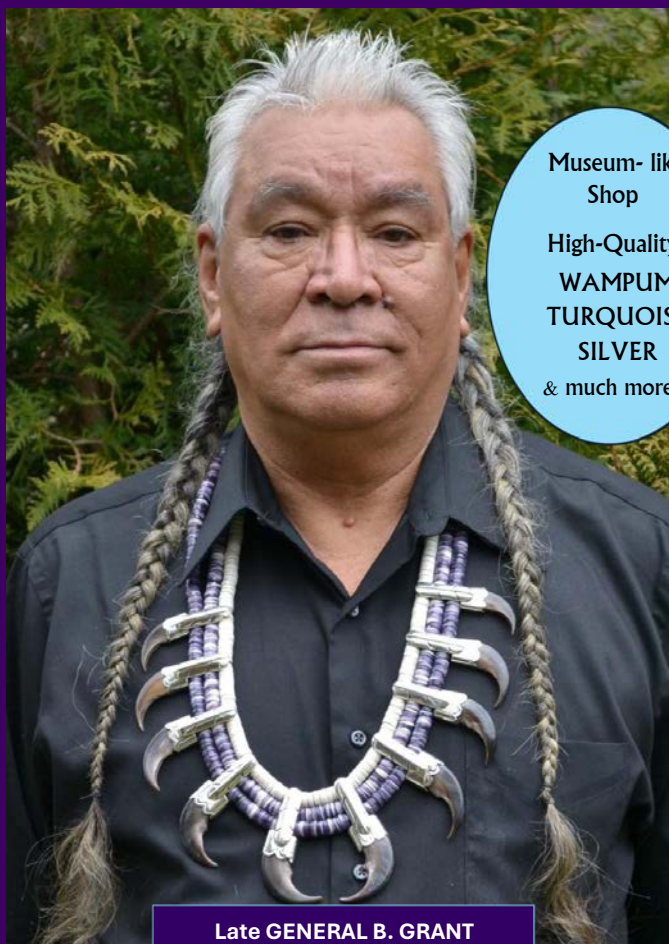
In Cherokee, NC, every adventure brings you closer to what moves you—from casting into pristine trout streams to discovering idyllic waterfalls. Whether it's hiking, tubing, fishing, or golfing, bring your family and leave no trace of your old self. Plan your trip today at VisitCherokeeNC.com

VISIT
Cherokee
NC



TRADITIONAL HANDS

Native American Jewelry & Art



Museum- like
Shop

High-Quality
WAMPUM
TURQUOISE
SILVER
& much more

Late GENERAL B. GRANT
CHEROKEE MASTER-SILVERSMITH

OPEN DAILY
MAR-OCT 10am-6pm
NOV-FEB 11am-5pm

970 TSALAGI ROAD
CHEROKEE, NC 28719
Phone (828) 554.5884



www.TraditionalHands.com



Wir sprechen Deutsch. Besuchen Sie uns!



Experience FONTANA DAM, ROBBINSVILLE & LAKE SANTEETLAH

31 MILES ← FROM BRYSON CITY

56 MILES → TO MURPHY



46 MILES FROM FRANKLIN, NC

ENTRANCE TO SPECTACULAR CHEROHALA
SKYWAY, A NATIONAL AND STATE SCENIC BYWAY

3 VIBRANT COMMUNITIES:

- ★ **FONTANA DAM** – Fontana Dam is ranked among the most beautiful dams in the world & the highest concrete dam east of the Rockies. Beautiful views at visitor center.
- ★ **ROBBINSVILLE** – Quaint town with friendly atmosphere & outdoor adventure abound.
- ★ **LAKE SANTEETLAH** – A water wonderland of camping, boating and hiking

HIDDEN GEMS AND POPULAR ATTRACTIONS:

- ★ **THE DRAGON** – America's #1 spot for sport car and motorcycle enthusiasts. 11-miles with 318 curves. tailofthedragon.com
- ★ **CHEROHALA SKYWAY** – This scenic 43-mile road stretches from the mountains of Robbinsville into Tennessee backcountry. cherohala.com
- ★ **JOYCE KILMER MEMORIAL FOREST** – Impressive 3800-acre wilderness. 5410 Joyce Kilmer Rd. fs.usda.gov

GRAHAMCOUNTYTRAVEL.COM
TOWNOFROBBINSVILLE.COM
DEALSGAP.COM

AGRITOURISM

Graham County Farmer's Market

Local farmers and crafters. Free. Saturdays July–October, 8am–12noon. Parking lot of Graham County Library. 80 Knight St. Robbinsville 828-479-8796

ARTS/CRAFTS

Stecoah Valley Cultural Arts Center

Gallery, historic auditorium, arts, crafts, and culinary classes, festivals, summer concerts. 121 School House Rd. Robbinsville, NC 28771 828-479-3364 stecoahvalleycenter.com

BLUEWAYS

The Cheoah River

The Cheoah River, 20 miles long, is located in the extreme southwestern corner of North Carolina, near Robbinsville. Unique in its features, the Cheoah is one of the most physically demanding rivers in the world and the perfect challenge for the most adventurous paddlers. smokymountainblueways.com



Lake Santeetlah

The lake hosts a variety of fish including smallmouth bass, largemouth bass, walleye, crappie, bream, and lake trout. There are more than fifty primitive campsites scattered around the lake that include a picnic table and fire ring. smokymountainblueways.com



Junaluska Memorial

Displays dedicated to preserving Cherokee Indian history and culture. 1 Junaluska Dr. Robbinsville, NC 28771 828-479-4727

TVA Fontana Dam Museum & Visitor's Center

1942, highest dam east of Rockies. The AT crosses over dam with showers, hikers call it the Fontana Hilton. 1001 Fontana Dam Rd. Fontana Dam, NC 28733 828-498-2234 tva.com

Dining

Dam Coffee House

Full-service coffee house offering ALL of the coffee drinks and pastries you love! Open seasonally. 300 Woods Rd. Fontana Dam, NC 28733 828-498-2211 fontanavillage.com



Fontana Village Ice Cream Parlor

Enjoy Mayfield Dairy Farms' finest ice cream with fresh baked waffle cones and cookies. 180 Welch Road Fontana Dam, NC 28733 828-498-2148 fontanavillage.com



Hazel's Restaurant & Lounge

Elegant, relaxing atmosphere. Our award-winning Chef prepares the freshest local vegetables and meats, baked goods, and desserts plated to perfection. 300 Woods Rd. Fontana Dam, NC 28733 828-498-2115 fontanavillage.com



Quill's Canteen

Driving the "Dragon" or in the area, stop by for the best burgers and coldest beer! Indoor or outdoor seating on our huge patio, delicious casual food, and friendly service! Open seasonally. 300 Woods Rd. Fontana Dam, NC 28733 828-498-2211 fontanavillage.com



Rediscover

FONTANA VILLAGE
Resort & Marina

*Start a
New Tradition!*

100+ CABINS
80 LODGE ROOMS
WATERFRONT CAMPGROUND

Restaurants - Bars - Coffee House -
General Store - Ice Cream Parlor -
Gift Shops - Pool - Lazy River - Mini Golf -
Disc Golf - Arcade - Pickleball - Tennis -
Full Service Marina - Boat Rentals -
Holiday Events & More!

FontanaVillage.com

180 Welch Road | Fontana Dam, North Carolina

Fontana Village Pool Bar and Shop

Pool bar featuring cold beer, slushy drinks, snacks, hamburgers, hot dogs, pizza and wings! Also, shop for fun pool items in our poolside shop! Open seasonally.

180 Welch Road
Fontana Dam, NC 28733
828-498-2148
fontanavillage.com

**Rivers Edge Treehouse Resort**

Six luxury treehouses, riverfront, covered parking, king beds, Wi-Fi, refrigerators, TV, grills and firepits.

195 Old U.S. 129
Robbinsville, NC 28771
828-735-2228
riversedgetreehouses.com

Snowbird Mountain Lodge

4633 Santeetlah Rd
Robbinsville, NC 28771
828-479-3433
snowbirdlodge.com

Tapoco Tavern

Riverside dining, full outdoor bar, trout, pizza, burgers, wings, steaks, salads, groups welcomed, and covered parking.

14981 Tapoco Rd.
Robbinsville, NC 28771
828-498-2800
tapoco.com

**OUTDOOR ACTIVITY****Fontana Marina Excursions & Boat Rentals**

Rental choices include pontoon boats, canoes, kayaks, and paddle boards. Pontoon Boat Shuttle Services are available for hikers and trout fishermen wanting to explore Eagle Creek, Hazel Creek, or any of the North Shore of the Fontana Lake. Get out on the Southern Boundary of the Great Smoky Mountain National Park with easy access to the mountains or just a short trip back to luxury of the Fontana Village Resort. Pick-up and drop-off services are available.
828-498-2129

LODGING**Fontana Village Resort & Marina**

Renovated lodge, cabins, campground, shopping, restaurants, bars, entertainment, disc golf, miniature golf, arcade, pool, lazy river, tennis, pickleball, marina, & more! Pets are welcome.

300 Woods Rd.
Fontana Dam, NC 28733
828-498-2211 • 800-849-2258
fontanavillage.com

**Historic****Tapoco Lodge**

Where adventure and sanctuary meet, historical ambiance with modern conveniences, tavern, lodging, 11 hiking trails, Cheoah River releases, and more.

14981 Tapoco Rd.
Robbinsville, NC 28771
828-498-2800
tapocolodge.com

Cherohala Skyway

Connecting the Cherokee National Forest to the Nantahala National Forest, this clean, smooth highway encourages you to open up your sports car or pause your RV for a sandwich and the beautiful sights. 20 miles • 45 minutes
ncdot.gov/travel/scenic

**Deals Gap Motorcycle Resort**

Store, grill, motel, Wifi, gas station, merchandise, local information, fire pit, March–November.

17548 Tapoco Rd.
Robbinsville, NC 28771
800-889-5550
dealsgap.com

**The Benton MacKaye Trail**

The trail is approximately 300 miles in length and starts 0.2 miles down the Appalachian Trail from Springer Mountain, GA traveling north through TN and NC. The "BMT" features many scenic views of surrounding mountains, water falls, streams and wildlife. For more information visit bmta.org and Facebook.



It's Festival Season

ON THE SECRET SIDE OF THE SMOKIES

MAY

SMOKY MOUNTAIN SPRINGFEST

MAY - AUG

DANCING ON THE SQUARE

MAY

FADING VOICES

JUN

FLAME AZALEA FESTIVAL

JUN - AUG

AN APPALACHIAN EVENING

JUL

HERITAGE FESTIVAL

OCT

STECOAH HARVEST FESTIVAL



GRAHAMCOUNTYTRAVEL.COM



scan me



OUTDOOR ACTIVITY

Fontana Lake Cruises

Discover Fontana Lake by CraigCat. Enjoy scenic views, hidden coves, and personalized adventures on crystal-clear mountain waters.

608-393-2324

fontanalakecruises.com

Nantahala Byway

The steep walls that frame the Nantahala Gorge are an impressive site you'll tour as part of this swirling byway. Nearby, the Nantahala River has become legendary for its whitewater. Just depart from Marble, head east and don't stop until you pass Wesser.

43 miles • 1.5 hours

Travels through Cherokee, Graham, Jackson & Swain counties.

ncdot.gov/travel/scenic

Snowbird (Nantahala National Forest)

Open year-round
Picnic, restrooms, fishing.



Cheoah Point (Nantahala National Forest)

Open April-October.
Camping, picnic, restroom, trailer space, drinking water, hiking trail, boat ramp, fishing, fee required.



Horse Cove (Nantahala National Forest)

Open year-round
In winter no water or fee. Camping, restrooms, trailer space, drinking water, fishing, fee required.



Cheoah & Calderwood Lakes

Each 7+ miles, boating, flat-water kayaking & canoeing. Harrison Ford jumped off Cheoah Dam in the movie *The Fugitive*.



Joyce Kilmer (Nantahala National Forest)

Open year-round.
Picnic, restroom, drinking water, hiking trail, information.



Cable Cove (Nantahala National Forest)

Open April-October. Camping, picnic, restrooms, trailer space, drinking water, boat ramp, fishing, fee required.



Sassafras Falls

Follow a 3.5-mile trail to multiple wide, steep falls about 45 feet high.

Big Snowbird Trail

12.7 miles, difficult, fishing
Trailhead: Big Snowbird Road. The first four miles are recommended for day hikes.

Tsali (Nantahala National Forest)

Open April-October.
Off NC 28 past Bryson City, or if coming from Robbinsville NC 143 until you reach NC 28, go east. Entrance on north side of NC 28, well-marked. Camping, picnic, trailer space, showers, drinking water, hiking trail, horse trail, bike trail, boat ramp, fishing, fee required.



Rattler Ford Group Campground (Nantahala National Forest)

Open mid-April-mid-October. Showers, hiking trail, fishing, reservations required. Four campsite areas that accommodate around 25 persons each for tent camping. ReserveUSA.com or 877-444-6777.



Yellow Creek Falls

Travel U.S. 129 North from Robbinsville. Go two miles past the Yellow Creek Road intersection and the parking area and trailhead/sign will be on the right. Walk 0.33 mile to falls.

OUTDOOR ACTIVITY

Joyce Kilmer Memorial Trail

2 miles, easy
Trailhead: Joyce Kilmer Memorial Forest parking lot. Joyce Kilmer Forest, the last remnant of virgin forest in the Southern Appalachians, offers a spectacular two-mile loop trail.

Maple Springs Observation Point

800 feet, easy, handicap-accessible
Trailhead: Maple Springs Observation Area. Maple Springs offers an unparalleled view of the Smokies, especially during the fall color season.

Waterfall on Tellico River

A 0.5-mile trail to two large cascading waterfalls, separated by a short run, with an overall height of about 45 feet.

Fontana Village & Tapoco Lodge Trails

The individual trails vary widely in their width, steepness, and technical difficulty. Describing one distinct route here is impossible because this network of trails crisscrosses all around the properties, totaling 27 & 31 miles respectively.

Fontana Lake

Offers best smallmouth bass fishing. Enjoy boating, floating, and kayaking. Hikers can enjoy views of the lake from Clingmans Dome.
smokymountainblueways.com



SHOPPING

Fontana General Store And Check-in

The Fontana General Store carries all the essentials for travel and leisure. From grocery items to snacks, hiker supplies and souvenirs and gifts.

180 Welch Road
Fontana Dam, NC 28733
828-498-2148
fontanavillage.com



Dam Garage Gas Station & Gift Shop

Located on HWY 28, the Pitstop is equipped to handle all your travel adventures. Fuel up your vehicle and grab your road warrior souvenir at the stop!
428 Fontana Road
Fontana Dam, NC 28733
828-498-2140
fontanavillage.com



Graham County



**Fontana Dam
Overlook Gift Shop**

Visit the world-famous Fontana Dam and stop by the Overlook Gift Shop and Visitor Center! Learn the history of Fontana Dam and shop for unique souvenirs, snacks, and more!
Fontana Dam, NC 28733
fontanavillage.com



Tail of the Dragon

Motorcycle & sport car information for Tail of the Dragon, Cherohala Skyway, Moonshiner 28, Devils Triangle and more.
17555 Tapoco Rd.
Robbinsville, NC 28771
828-479-8400 • 800-768-7129
tailofthedragon.com

VISITOR INFORMATION

**Graham County
Travel & Tourism**

Remote landscapes and outdoor adventure await. Stop by for maps and brochures to play or extend your stay!
474 Rodney Orr Bypass
Robbinsville, NC 28771
828-479-3790 • 800-470-3790
grahamcountytravel.com

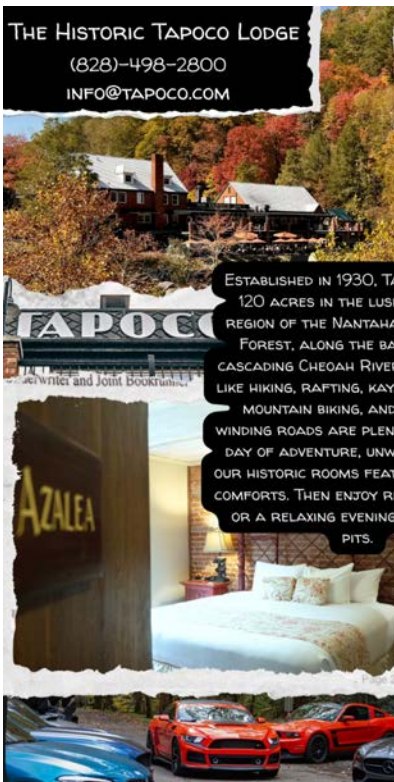


**Town of Lake Santeetlah
Travel Development Authority**

Adventure awaits within remote mountain forests bordering the Great Smoky Mountains. Lakefront vacation rental homes.
16 Marina Dr.
Lake Santeetlah, NC 28771
828-479-8190
discoversanteetlah.com
townoflakesanteetlah.com

THE HISTORIC TAPOCO LODGE

(828)-498-2800
INFO@TAPOCO.COM



ESTABLISHED IN 1930, TAPOCO SITS ON 120 ACRES IN THE LUSH MOUNTAIN REGION OF THE NANTAHALA NATIONAL FOREST, ALONG THE BANKS OF THE CASCADING CHEOAH RIVER. ADVENTURES LIKE HIKING, RAFTING, KAYAKING, FISHING, MOUNTAIN BIKING, AND EXPLORING WINDING ROADS ARE PLENTIFUL. AFTER A DAY OF ADVENTURE, UNWIND IN ONE OF OUR HISTORIC ROOMS FEATURING MODERN COMFORTS. THEN ENJOY RIVERSIDE DINING OR A RELAXING EVENING BY THE FIRE PITS.



www.TAPOCO.COM

Experience FRANKLIN & NANTAHALA

24 MILES ← FROM HIGHLANDS

50 MILES → TO BRYSON CITY



ONLY 2.5 HOURS FROM ATLANTA, GEORGIA

GEM CAPITAL OF THE MOUNTAINS!

2 VIBRANT COMMUNITIES:

- ★ **FRANKLIN** – Franklin area is rich in gems & minerals and is known locally as the “Gem Capital of the World”.
- ★ **NANTAHALA** – Located west of Wayah Gap. Nantahala is a Cherokee word which means “Land of the Noonday Sun”.

HIDDEN GEMS AND POPULAR ATTRACTIONS:

- ★ **WAYAH BALD LOOKOUT TOWER** – Great views of Appalachian Mountains in GA, TN, SC and NC.
- ★ **BARTRAM TRAIL** – Wallace Branch to William’s Pulpit-4.1 mile trail located near Franklin & offers many activity options. Best used March-October. alltrails.com
- ★ **NANTAHALA NATIONAL FOREST** – The largest of four forests in NC comprised of over half a million acres with 600 miles of hiking trails, peaks 5,500 feet.
- ★ **SCOTTISH TARTANS MUSEUM** – Only Scottish Tartans Museum in the United States. Gift shop & Museum. scottishtartans.org

EXPLORINGWNC.COM
EXPERIENCEFRANKLINNC.COM

AGRITOURISM**Franklin Tailgate Market**

Variety of only homegrown products such as cheese, plants, eggs, trout, honey and more. The Franklin Farmers Tailgate Market was established in 2001 by a group of organic growers. Saturdays from 8:00am - 12:00pm.

226 E Palmer St.
Franklin, NC 28734
[facebook.com/
FranklinNCFarmersMarket](https://www.facebook.com/FranklinNCFarmersMarket)

AIRPORT**Macon County Airport**

State-of-the-art airport terminal facility, business development center.


1241 Airport Rd.
Franklin, NC 28734
828-524-5529
maconcountyairport.com

ANTIQUES/THRIFT**Nestfeathers Antiques**

Visit a quaint old building with three floors of wonderful antiques and wonderful prices.
153 E Palmer St.
Franklin, NC 28734
828-349-5476
nestfeathersnc.com

Whistle Stop Depot

Antique mall and specialty shops including furniture, country accessories, clothing, jewelry, crafts and food.
145 River Rd.
Franklin, NC 28734
828-349-1600
whistlestopmall.com



Wesser Bald
Photo by Eric Haggart Imagery

ARTS/CRAFTS

Uptown Gallery

Original art by area artists. Classes and workshops available. Call for art association membership benefits.

30 E Main St.
Franklin, NC 28734
828-349-4607
franklinuptowngallery.com

BLUEWAYS

The Little Tennessee River

The Little Tennessee and its immediate watershed comprise one of the richest archaeological areas in the southeastern U.S. The river offers canoeing, fishing and floating.



Nantahala Lake

Nantahala Lake sits above the Nantahala Gorge and is known for its scenic beauty and crystal-clear waters. The lake offers recreational opportunities that include fishing, swimming, boating, skiing and many other activities.



smokymountainblueways.com

BREWERY/WINERY

Lazy Hiker Brewing Company

Come get lazy, enjoy craft beer in our taproom, family-friendly, cans/growlers, to-go, food truck on-site.

188 W Main St.
Franklin, NC 28734
828-349-BEER (2337)
lazyhikerbrewing.com



Slanted Window Tasting Station

Unique tasting experience featuring local wines, bourbons and craft beers paired with an excellent curated menu.

587 Harrison Ave, Franklin, NC
828-276-9463
slantedwindow.com



SenAmore Vineyard & Farms, LLC

SenAmore Vineyard and Winery, home of Slanted Window Wines, is located in Tellico. We produce excellent Bordeaux style wines from this ancient region.

4388 Tellico Road
Franklin, NC 28734
828-276-9463
slantedwindow.com



CULTURE/MUSEUM

Cowee School Arts & Heritage Center

Music, crafts, heritage, history, traditional food, pottery, mountain, families, weaving, concerts, clogging, arts, festival, bluegrass.

51 Cowee School Drive
Franklin, NC 28734
828-369-4080
coweeschool.org

Cowee Viewsite and Trails

With 16 acres and 1,600 feet of Little Tennessee River frontage, this preserve has the only ADA-accessible trail in Macon County.

57860 Bryson City Road
Franklin, NC 28734
828-349-1945
coweeschool.org

Macon County Historical Museum

Local history and genealogy. Special rotating collections. Gift shop. Genealogical research free to members.

36 W Main St.
Franklin, NC 28734
828-524-9758
maconnchistorical.com

Scottish Tartans Museum

Come discover your heritage at the only Scottish Tartans Museum located outside Scotland. Quality Highland attire & Scottish gifts. NO PETS.

86 E Main St.
Franklin, NC 28734
828-524-7472
scottishtartans@gmail.com
scottishtartansgiftshop.com
scottishtartansmuseum.org

The Rickman Store

The Rickman Store is a historic site, open every Saturday from May through December from 10:00 a.m. to 4:00 p.m. Music jam sessions start at noon.
 259 Cowee Creek Rd,
 Franklin, NC 28734
 FB@Friends of the Rickman Store

Taste of Scotland and Celtic Festival

Enjoy Everything Scottish: food, clans, parades, pipe bands, music, highland games, children's activities, storytelling and souvenirs. Call or Check Website.
 Franklin, NC 28734
 828-421-7302
 tasteofscotlandfest.org

DINING

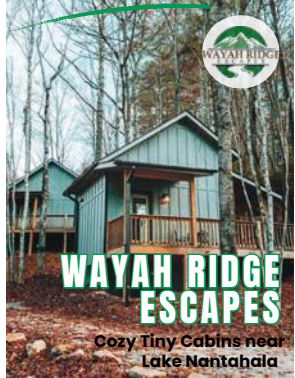
Jack the Dipper

Home of the Warm Waffle Cone. Check online for a new location!
 Jackthedipper.com

Asian King Buffet Sushi Bar & Chinese Cuisine

Chinese buffet featuring over 40 items plus sushi.
 109 Commons Dr.
 Franklin, NC 28734
 828-349-9800
 asianking1.com

Escape to Nature's Embrace



22 Wayah Rd. S.
 Topton, NC, 28781

828.307.0515



www.wayahridgeescapes.com

Scottish Tartans Museum and Heritage Center

- A Must See - America's Only Scottish Tartans Museum!
- Cradled in the Stunning Nantahala National Forest
- Devoted Team of Scottish Culture Ambassadors
- Impressive Scots Heritage Resource Center
- Hundreds of Unique Historical Exhibits
- Bountiful Gift and Apparel Shop

86 E. Main St. • Franklin, NC
 (828) 524-7472 • scottishtartansmuseum.org

DINING

Fat Buddies Ribs and BBQ of Franklin

Family-Style BBQ, Baby Back Ribs, Smoked Pork, Smoked Beef, Smoked Chicken, Hand-Cut Steaks.

311 Westgate Plaza
Franklin, NC 28734
828-349-4743
fatbuddiesribsandbbq.com

Gazebo Creekside Cafe

Gazebo Creekside Cafe is where the locals eat. Enjoy outdoor dining.

44 Heritage Hollow
Franklin, NC 28734
828-524-8783
gazebocreeksidecafe.com

Gracious Plates on Main

Eat, drink, & discover amazing food! Experience where great food meets great service!

A farm-to-fork experience, enjoy quality food grown locally!
46 E Main Street
Franklin, North Carolina 28734
828-369-2690
graciousplatesonmain.com

Lazy Hiker Brewing Company

Come get lazy, enjoy craft beer in our taproom, family-friendly, cans/growlers, to-go, food truck on-site.

188 W Main St.
Franklin, NC 28734
828-349-BEER (2337)
lazyhikerbrewing.com



Riverwalk Grille

Enjoy delicious steaks, savory ribs, fresh seafood, and a variety of appetizers. Try out our craft beer, wine and signature cocktails at our full bar.

57 Highlands Rd
Franklin, North Carolina 28734
828-332-4455
riverwalkgrille.com

Siam Thai Cuisine

Come enjoy our authentic, Bangkok style Thai cuisine, and our friendly staff.

8507 Georgia Rd.
Otto, NC 28763
828-369-9324

Sakura Japanese Restaurant

Japanese, Sushi, Asian, vegetarian, vegan, seafood, sashimi, fresh, hibachi, allergy-friendly, draft beer, wine, sake, teriyaki, kid-friendly.

319 Carolina Mtn Dr.
Franklin, NC 28734
828-349-8917
sakurafranklinnc.com

Slanted Window Tasting Station

Unique tasting experience featuring local wines, bourbons and craft beers paired with an excellent curated menu.

587 Harrison Ave,
Franklin NC, 28734
828-276-9463
slantedwindow.com



Smokestack Cafe

A cozy spot in Franklin, NC that offers smoky delights and great times. Breakfast, lunch, and dinner on weekdays and breakfast and lunch on weekends. Catering services for any budget 7 days a week.

61 S. Patton Ave
Franklin, NC 28734
828-369-0001
Smokestack-cafe.com

Sunset Restaurant

Great homestyle cooking with family atmosphere, homemade pies, daily specials and sides.

Dine in, curbside, carryout, catering.

498 Harrison Ave.
Franklin, NC 28734
828-524-4842
facebook.com/sunsetrestaurantnc

FAMILY ATTRACTION

Little Tennessee River Greenway

Offers nearly a 5 mile walk, bike, or run on a paved trail. Friends of the Greenway, a non-profit organization provides support and enhancements. The Greenway Visitor Center/ FROG Quarters.
573 E Main St.
Franklin, NC 28734
828-369-8488
littletennessee.org

**Andy's Trout Farm**

Fishing, gem mining, hiking, cabins, family fun, waterfalls, weddings, RVs, wildflowers. Church groups, family reunions.
116 Andy's Trout Farm Rd.
Otto, NC 28763
706-746-2550
andystroutfarm.com

Little Tennessee River Greenway

4.5 mi, mostly paved trail. A support organization, Friends of the Greenway is located near the trail offering information, drinks, gifts and free wifi.
573 E Main St.
Franklin, NC 28734
828-369-8488
littletennessee.org

The Factory

Over 100+ arcade games, go-carts, bumper cars, laser tag, trampoline park, mini-golf and more!
1024 Georgia Rd
Franklin, North Carolina 28734
828-349-8888 • (866) 482-2386
franklinfun.com

**Tiny Life Homes**

Tour our tiny homes and cabins to see how you can live large, while living tiny.
4075 Georgia Rd.
Franklin, NC 28734
828-634-0077
sales@tinylife.com
tinylife.com



SLANTED WINDOW

TASTING STATION

LOCAL WINES • FOOD • FULL BAR

YOUR LOCAL VINEYARD TO GLASS EXPERIENCE!

587 HARRISON AVE
FRANKLIN, NC 28734
828-276-WINE

SLANTEDWINDOW.COM

GEM MINES & GALLERIES

Artisan Jewelers Gemstone and Mineral Gallery

Artisans
Gem & Mineral Gallery
Custom Stone Cutting

30 years experience in stone cutting & jewelry making from rough to refined gems/minerals.
3348 Georgia Rd.
Franklin, NC 28734
828-524-9193
artisanjewelrync.com

Cherokee Ruby Mine

Dig like the old timers. Located in the heart of the Cowee Valley, the Cherokee Mine is the only unsalted gem mine in Franklin, NC.
41 Cherokee Mine Rd.
Franklin, NC 28734
828-349-2941
cherokeerubymine.com
Cherokeerubymine@gmail.com

GEM MINES & GALLERIES

Gold City Gem Mine

Gem mining. Gold panning. Gem cutting. Jewelry shop. Snacks and refreshments. Gifts. Souvenirs. Antiques.

9410 Sylva Rd, Hwy 441
Franklin, NC 28734
828-369-3905

Find Us On Facebook:
goldcitygemmine
totalgems.com
goldcity1993@gmail.com



Rose Creek Mine

Good clean dirty fun! All equipment provided. Family friendly, picnic area, closed Sundays.

240 Terrace Ridge Dr.
Franklin, NC 28734
828-349-3774
rosecreekmine.com

Sheffield Gem Mine

A True Authentic Ruby Mine!
You'll be mining NATIVE dirt with the potential to find NATIVE RUBIES/SAPPHIRES. Already dug buckets, come see us and pick out your LUCKY bucket!!!

385 Sheffield Farms Rd.
Franklin, NC 28734
828-369-8383
sheffieldmine.com



Ruby City
Gems & Minerals

NC's largest and finest gem and mineral store. Gemstone cutting and mounting. Free museum.
130 E Main St.
Franklin, NC 28734
800-821-7829
rubycity.com

CELEBRATING 68 YEARS IN BUSINESS!

Ruby City
GEMS & MINERALS

FINE JEWELRY • EST 1958

BEST JEWELRY STORE & MUSEUM 2023!

Gemstones - Rough & Rare Specimens • Lapidary Equipment & Supplies • Take-home Gem Bags
Fossils & Meteorites • Himalayan Salt • Essential Oils • Teas & Herbs

MACON COUNTY'S BEST JEWELRY STORE

130 East Main Street, Franklin NC • 828.524.3967 • gems@rubycity.com • www.rubycity.com

GENERAL SERVICE

Stewart Communications

Stewart Communications is a one-stop-shop for all your marketing needs. Our team of experienced professionals can help your business succeed.
 98 Hyatt Road
 Franklin, NC 28734
 828-783-7266
 stewartcomm.com

WELLNESS

St. John's Cartoogechaye Episcopal Church

A vibrant church family balancing worship, study, fellowship and service.
 542 St. John's Church Rd.
 Franklin, NC 28734
 828-524-6370
 stjohncartoogechaye.com

LODGING

Andy's Trout Farm

Fishing, gem mining, hiking, cabins, family fun, waterfalls, weddings, RVs, wildflowers. Church groups, family reunions.
 116 Andy's Trout Farm Rd.
 Otto, NC 28763
 706-746-2550
 andystroutfarm.com

A Sapphire Inn

Downtown Franklin, walk to Restaurants, Shops, and Breweries. We are Pet-Friendly. Also have special rates for: hikers, bikers, miners, military veterans, seniors, workers and groups.
 761 E Main St. Franklin, NC
 828-524-4406
 sapphireinnfranklin.com

ATbnb

ATbnb is a charming house situated on a peaceful 11-acre property with a small creek. Located between Franklin and Bryson City, NC.
 191 Bowers Mountain Rd
 Franklin, NC 28734
 404-234-1622 • Atbnb.com

Big Bear Cabin Rentals

Log cabins in wooded settings with Wi-Fi and W/D. Perfect base location and open year-round.
 3590 Georgia Rd.
 Franklin, NC 28734
 828-349-0099 • 866-349-0099
 bigbearfranklin.com

Colonial Inn Franklin

30 rooms, mountain views, microwave, refrigerator, TV, coffee in lobby and Wi-Fi. Limited Pet rooms with terms and conditions.
 3157 Georgia Rd.
 Franklin, NC 28734
 828-524-6600
 colonialinnfranklin.com

Quality Inn

Quality Inn in Franklin, NC offers comfortable accommodations with free WiFi, hot breakfast, and an indoor pool. Enjoy a relaxing stay in the Smokies.
 313 Cunningham Rd
 Franklin, NC 28734
 choicehotels.com/north-carolina/franklin/comfort-inn-hotels/nc373
 828-369-9200

Stay Out Yonder

2 Bedroom Bungalow conveniently located in town! Dogs Welcome! Book on Airbnb.com.
 121 Hillcrest Ave.
 Franklin, NC 28734
 828-369-6007
 airbnb.com/h/stayoutyonder

Wayah Ridge Escapes

Peaceful mountain getaway near Lake Nantahala, featuring four modern tiny cabins designed for relaxation, connection, and access to nearby adventure.
 22 Wayah Ridge Drive
 Topton, NC 28781
 828-307-0515
 wayahridgeescapes.com

LODGING

CAMPGROUND

Andy's Trout Farm

Fishing, gem mining, hiking, cabins, family fun, waterfalls, weddings, RVs, wildflowers. Church groups, family reunions.
116 Andy's Trout Farm Rd.
Otto, NC 28763
706-746-2550
andystroutfarm.com

Cowee Campground

We offer six full-hookup RV sites, including one pull-thru, cornhole, a treehouse, & other fun amenities. Primitive tent sites are available in shaded woods, featuring a gorgeous rustic setting, glamping-style bathhouse. Short walk to Sheffield Gem Mine.
360 Sheffield Farms Rd
Franklin, NC 28734
828-371-8471
sheffieldmine.com/lodging



Cullasaja River RV Park

Located on the Cullasaja River, we offer river front sites, FHU, free wifi, big rig friendly, dog park, propane, laundry, and a relaxin' good time!
6269 Highlands Rd.
Franklin, NC 28734
828-524-2559
campnc.com



Mi Mountain Campground

Full hookups, tent sites, rustic cabins, firepits, playground, pets allowed.
151 Mi Mountain Rd.
Franklin, NC 28734
828-524-6155
mimountaincampground.com

Old Corundum Millsite Campground

Located on Cullasaja River off Hwy 64E, 5 miles from Franklin. 85 sites, full hook-ups.
80-33 Nickajack Rd.
Franklin, NC 28734
828-524-4663
ocmcampground.com

Pines RV Park and Cabins

30/50 AMP. Open year-round. Tenters to 45-Foot RVs. Cabins. Beautiful, quiet mountain setting.
4724 Murphy Rd.
Franklin, NC 28734
828-524-4490
thepinesrvpark.com

Rose Creek Campground & Cabins

Secluded, flat and shaded campsites located in serene valley surrounded by beautiful mountains and landscape.
140 Terrace Ridge Dr.
Franklin, NC 28734
252-286-2008
rosecreekcamping.com



Highlands Riverbend RV Resort and Cabins

RV Resort and Cabins in Franklin, NC with 18 waterfront sites on the Cullasaja River & Ellijay Creek, events, kayak rentals, clubhouse, and more.
4450 Highlands Rd
Franklin, NC 28734
828-524-7846
highlandsrverbend.com

Whistle Stop Depot

Beautiful mountain views, Wi-Fi, power, water, sewer. Call or email.
145 River Rd.
Franklin, NC 28734
828-349-1600
whistlestopmall.com

OUTDOOR ACTIVITY

Fish Tales Outfitters & Guide Service

We offer guided fly fishing and bass trips throughout the beautiful mountains of Western North Carolina. We have a fully stocked fly and tackle shop.
29 E Main St, Franklin, NC
828-421-0732
fishtaleswnc.com

Cowee View Interpretive Site

Across the river from Cowee Mound, the viewing platform, interpretive kiosk, native landscape and walking trail help tell the story of Cowee. NC-28/Bryson City Road, 7.5 miles north of Franklin 828-524-2711
mainspringconserves.org

Little Tennessee River Greenway

Offers nearly a 5 mile walk, bike, or run on a paved trail. Friends of the Greenway, a non-profit organization provides support and enhancements. The Greenway Visitor Center / FROG Quarters 573 E Main St. Franklin, NC 28734
littletennessee.org • Facebook: Friends of the Greenway, Inc.

**Gibson Bottoms**

Gibson Bottoms is a ~65 conserved acres preserve that includes forest trails and 1,000 feet of Little Tennessee River Rain Ridge Road Franklin, NC 28734 828-524-2711
mainspringconserves.org

Pickin' on the Square Saturday Nights

Late May–Mid October. FREE! Bring your family, bring your friends, bring a chair.
townoffranklinnc.com/pickin-on-the-square.html

Wayah Bald (Nantahala National Forest)

Open April 16–December 31. 70-year-old stone fire tower, where AT & Bartram Trails cross, picnic, restrooms, hiking trail, scenic views.

**Nantahala Gorge (Nantahala National Forest)**

Open year-round. Picnic, canoe/rafting, fishing, scenic views.

**Queen Branch**

With 16 acres and 1,600 feet of Little Tennessee River frontage, this preserve has the only ADA-accessible trail in Macon County. Franklin, NC 28734 828-524-2711
mainspringconserves.org

Standing Indian (Nantahala National Forest)

Open April–November. Camping, picnic, restrooms, trailer space, showers, drinking water, hiking trail, fishing, fee required.



APPALACHIAN GROWERS

USDA Certified Organic Hemp Products
Straight from Our Farm in Franklin, NC
www.appalachiangrowers.com • 828-226-3257
info@appalachiangrowers.com

OUTDOOR ACTIVITY

Tessentee Bottomland Preserve

A 110-acre preserve with extensive hiking trails, access to Tessentee Creek and an old farmstead. Stop #53 on the NC Birding Trail.

2249 Hickory Knoll Road,
Franklin, NC 28734

828-524-2711

Mainspringconserves.org

Big Laurel Falls and Mooney Falls

An easy 0.5-mile trail brings you to this 30-foot cascading waterfall.



Hurricane Primitive (Nantahala National Forest)

Open April 16–
December 31.

Camping, trailer space, hiking trails, horse trail, fishing.



QUILTING

A Stitch In Time

Baby Lock, Bernina, & Brother authorized dealer & service center.

23 Macon Center Dr.

Franklin, NC 28734

828-524-3300

info.astitchintimenc@gmail.com

REAL ESTATE

Sanctuary Village

Build the home of your dreams in a timeless, walkable village just five blocks from historic Main Street, Franklin NC.

49 Village Circle East

Franklin, North Carolina 28734

828-203-2285

SanctuaryVillage.com



Tiny Life Homes

Tour our tiny homes and cabins to see how you can live large, while living tiny.

4075 Georgia Rd.

Franklin, NC 28734

828-634-0077

sales@tinylife.com

tinylife.com



RE/MAX Elite Realty

Let us help you find your dream home in the mountains!

Outstanding Agents,
Outstanding Results!

1296 E Main St.

Franklin, NC 28734

828-349-4600 • 866-981-4600

propertyinfranklin.com

SHOPPING

Appalachian Growers

USDA organic
hemp farm

providing quality products: Full spectrum oil, lotion and salve.

250 Depot St. #2204

Franklin, NC 28734

828-226-3257

appalachiangrowers.com



Bryants Antique Mall

Antique mall with 3 floors and over 20,000 square feet of great finds and collectibles. Open 7 days a week. Located in historic Downtown Franklin, NC

71 East Main Street

Franklin, NC 28734

828-524-0280

bryantsantiquemall.com

Trail Mix

A curated selection of nature inspired gifts for all ages with a large selection of unique western NC and US artists-and quirky gifts for the giggles!

31 East Main Street

Franklin, NC 28734

828-421-9686

trailmixnc.com

Friends of the Macon County Public Library

Large, non-profit, used bookstore offering popular and rare books for readers of all ages, CDs, DVDs, audio books, puzzles & more.

115 Highlands Rd.

Franklin, NC 28734

828-349-6256

friendsofthelibrarymaconnc.org

Limberlost Pottery Studio and Gallery

We are an art gallery with an attached pottery studio for our three resident ceramic artists. We also have work by artists working in other mediums.

415 NE Main Street
Franklin, North Carolina 28734
828-526-6119
[facebook.com/limberlostgallery](https://www.facebook.com/limberlostgallery)
[instagram.com/limberlostgallery](https://www.instagram.com/limberlostgallery)

Mossy Rock WNC

Home decor, accessories, spa products with urban look, feel, perfect for you and your home!
37 E. Main Street
Franklin, NC 28734
828-369-1612
[facebook.com/MossyRockNC](https://www.facebook.com/MossyRockNC)

Yonder

Locally Sourced Organic Groceries, Cider, Meade + Wine, Events + Live Music.
151 Hillcrest Ave.
Franklin, NC 28734
828-421-0561
yondernc@gmail.com
eatrealfoodinc.com



NC's largest and finest gem and mineral store. Gemstone cutting and mounting. Free museum.
130 E Main St. Franklin, NC 28734
800-821-7829 • rubycity.com

THEATER



Smoky Mountain Center for the Performing Arts

1500-seat state-of-the-art facility, presents the finest live entertainment to our area.
1028 Georgia Rd.
Franklin, NC 28734
828-524-1598 • 866-273-4615
smokymountainarts.com

WELLNESS

Appalachian Growers

USDA organic hemp farm providing quality products: Full spectrum oil, lotion and salve.
250 Depot St. #2204
Franklin, NC 28734
828-226-3257
appalachiangrowers.com



Yoga Den

Yoga Den in Franklin, NC offers a variety of yoga classes for all levels, a boutique with premium yoga gear, and a cozy cafe with smoothies and espresso drinks. Enjoy a holistic wellness experience.
135 Highlands Rd
Franklin, NC 28734
828-482-9001
yogadenncc.com

Photo by Eric Haggart Imagery

VISITOR INFORMATION

Franklin Chamber of Commerce

Waterfalls, arts, family, hiking, gems, getaway, information, mines, trails, visitors, adventure, shopping, antiques, outdoors, historic.
98 Hyatt Rd.
Franklin, NC 28734
828-524-3161
visitfranklinnc.com



Franklin/Nantahala Tourism Development Committee

Promoting tourism in Franklin and Nantahala.
Franklin, NC 28734
828-524-3161
ExploringWNC.com



Franklin Tourism Development Authority

Promoting tourism in Franklin and Nantahala.
Franklin, NC 28734
828-524-3161
ExperienceFranklinNC.com



Smoky Mountain Host Visitor Center

Discover activities, events, history, and natural beauty the region has to offer. Gift shop, coffee and snacks. Free Wi-Fi; opens 9:00am to 5:00pm daily; closed Thanksgiving and Christmas Day.
4437 Georgia Rd.
Franklin, NC 28734
828-369-9606
visitsmokies.org



Welcome to One of WNC's Largest Antique Malls

BRYANT'S ANTIQUE MALL

In Historic Downtown Franklin

"Specializing in the Antique & Truly Unique!"

- Local Honey & Preserves
- Home Décor
- Furniture
- Toys
- Comics
- Trains
- Sports Memorabilia
- Tools & MUCH MORE!

3 Levels Of Antiques & Collectibles Over 20,000sf

Something for everyone, whether personal design, that special gift, or just for FUN!

828.524.0280
otto48122@gmail.com

71 East Main Street
Franklin, NC 28734

THE HEART OF YOUR SMOKIES ADVENTURE



[EXPERIENCEFRANKLINNC.COM](https://www.ExperienceFranklinNC.com)



FRANKLIN

NORTH CAROLINA

Elevate Your Adventures



HIKING GEM MINING WATERFALLS KAYAKING
SCENIC DRIVES CRAFT BREWERIES REST & RELAXATION

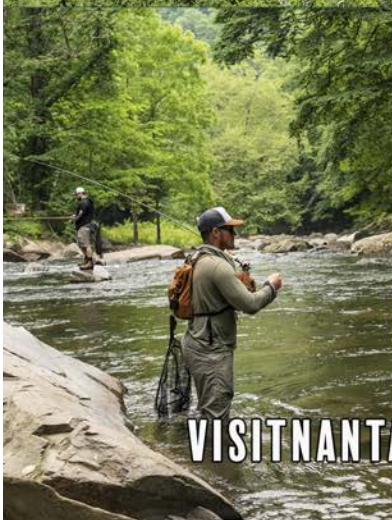
VISITFRANKLINNC.COM

NANTAHALA

NORTH CAROLINA

Land of the Noon Day Sun

HIKING FLY FISHING RAFTING KAYAKING
SCENIC DRIVES WATERFALLS REST & RELAXATION



VISITNANTAHALANC.COM

Experience HAYESVILLE & BRASSTOWN

15 MILES ← FROM MURPHY

133 MILES → TO ATLANTA



35 MILES FROM FRANKLIN, NC

REFERRED TO AS: "THE SECRET JEWEL OF WESTERN NC"

2 VIBRANT COMMUNITIES:

- ★ **HAYESVILLE** – Packed with boating, hiking, mountain biking and fishing spots. Lake Chatuge is a water haven. See a Pumpkin fly at the Pumpkin Chunkin Festival claychambernc.com
- ★ **BRASSTOWN** – Scenic Area. John C. Campbell Folk School offers a variety of classes, 800-365-5724 • folkschool.org

HIDDEN GEMS AND POPULAR ATTRACTIONS:

- ★ **THE COPPER DOOR** – Named one of the best restaurants in the country. thecopperdoor.com
- ★ **JACKRABBIT BIKING TRAIL** – Approximately 15 miles of very flowy loops for all skill levels.
- ★ **CHATUGE DAM & RECREATION AREA** – Hike and see the Dam. Picnic area, playground, easy walk or run. Facilities available. 1407 Chatuge Dam Rd., Hayesville.

CLAYCHAMBERNC.COM

ARTS/CRAFTS

John C. Campbell Folk School

Since 1925. Offering courses in craft, music and dance. On-campus housing. Visitors welcome. 1 Folk School Rd. Brasstown, NC 28902 828-837-2775 • 800-365-5724 folkschool.org



CULTURAL/MUSEUM

Clay County Historical & Arts Museum

Dedicated to preserving local history & culture at the Historical Jail. We are open Memorial Day Weekend through Labor Day Weekend. We will be open Tuesday-Saturday from 10am-4pm. During September & October, we will be open on Fridays & Saturdays only. 21 Davis Loop Hayesville, NC 28904 828.389.6814 clayhistoryarts.org

Historic Hayesville

Historic Hayesville Centennial Exhibit featuring downtown businesses, history & events. 116 Sanderson St. Hayesville, NC 28904 828-389-1862 historichayesvilleinc.com

DINING

The Firefly Café

The Firefly Café serves handmade European-inspired pastries and small-batch roasted coffee, with breakfast and lunch debuting in 2026. 78 Sanderson Street Hayesville, NC 28904 818-448-4438 • thefireflycafe.com

The Copper Door

Fine dining featuring aged steaks, fresh seafood, full bar, award-winning wine list; Reservations Recommended. 2 Sullivan St. Hayesville, NC 28904 828-389-8460 • thecopperdoor.com

EVENT/WEDDING

Clay County Courthouse/ Beal Center

Restored 1888 courthouse in the square, perfect venue for weddings, family gatherings, celebrations of life. 246 Main St. Hayesville, NC 28904 828-415-1623 • bealcenter.org

LODGING

Deerfield Inn

All rooms overlook beautiful Lake Chatuge. Amenities include mini-fridge, microwave, Wi-Fi, satellite TV, Non-smoking. Pets welcome. 40 Chatuge Ln. Hayesville, NC 28904 828-389-8272 • deerfield-inn.com

GOOD TO BE **TOGETHER** AT THE FOLK SCHOOL



For 100 years, the Folk School has transformed lives and brought people together in a nurturing environment for experiences in learning and community life that spark self-discovery.



800 Classes | 50 Subjects
Weeklong & Weekends

FOLKSCHOOL.ORG/SMOKYMTN

LODGING

Hinton Rural Life Center

Retreat. Reflect. Renew.
Hinton Center accommodations venue helps fund healthy, effective communities of faith. Pets welcome.
2330 Hinton Center Rd.
Hayesville, NC 28904
828-389-8336 • 866-389-8336
hintoncenter.org

The Enchanted Forest

Each cabin is uniquely designed. Alice's White Bunny Cottage, the Red Queen's Cottage, Snow White's Cottage, the Candy Cabin, or the Sugar Shack, Double Decker Bus, RV Sites and more.
9594 Tusquittee Rd
Hayesville, NC 28904
828-644-3911
magicalmountainresorts.com

CAMPGROUND

Sundowner RV Village

RV, NC mountains, camping, Georgia, Lake Chatuge, park models, year-round, spacious, shady sites, adults.
42 Sundowner Circle
Hayesville, NC 28904
828-389-3241
joyce@sundownerrvillage.net
sundownerrvillage.net

SHOPPING

Tiger's Store & Chinquapins Soda Bar

General store & 1940's soda bar with clothing for men & women, accessories, gifts, books, souvenirs and more! 5 generations, 150 years in operation!
42 Herbert Street
Hayesville, NC 28904
828-389-6531
FB @/TigersandChinquapins

The Lavender Crow Apothecary & Tea Shoppe

Discover tranquility in Hayesville, NC. Enjoy holistic organic teas, herbal remedies, and unique handcrafted gifts.
768 Oak Forest Rd
Hayesville, North Carolina
facebook.com/lavender-crowapothecary
706-889-0674

Lazy Llama

Restoring unwanted furniture into better-than-new modern designs. Shop unique crafts and gifts.
100 Sanderson St
Hayesville, NC 28904
facebook.com/lazylamahome
(561) 445-5221

Papaw's Harvest

Papaw's Harvest is a family-owned beekeeping business in North Carolina, specializing in pure, locally sourced honey.
Shop Online:
papawsharvest.square.site

OUTDOOR ACTIVITIES

The Hayesville Bike Shop

Full-service bike shop in Hayesville offering sales, repairs, rentals, and trail-ready gear for every kind of rider.
74 Sanderson Street
Hayesville, NC 28904
828-371-0623
thehayesvillebikeshop.com

Waterfall Byway

Winding 98 miles and featuring more than 200 distinct waterfalls, it begins at U.S. 64's intersection with NC 215. 98 miles • 3.5 hours
Travels through Clay, Jackson, Macon and Transylvania counties.
ncdot.gov/travel/scenic



Jackrabbit Mountain Trail

15 miles, easy, fishing, hiking, biking. Trailhead: Jackrabbit Recreation Area. Trail offers an excellent view of Lake Chatuge and provides lake fishing access as well. At Lake Chatuge get on NC 175, turn onto Jackrabbit Road, signed parking area on left.

Nantahala National Forest

Open year-round picnic, restrooms, drinking water, hiking trail.



Lake Chatuge

Lake Chatuge's abundance of scenic coves along its 133 mile shoreline are great for fishing, swimming, boating, camping and other water sports.

Fires Creek Area Trails

0.3–5.4 miles, easy/moderate/difficult, fishing, hiking, biking, horse trails. Trailhead: Fires Creek Recreation Area. Offers a number of excellent trails, including a designated horseback trail and horse camp. Cover Loop is an easy 0.3-mile trail that is handicap-accessible. Other popular foot trails include Leatherwood Loop Trail (0.7 mile), Leatherwood Branch Access (3.5 miles) and Cover Trail, which follows Fires Creek for approximately five miles.

Leatherwood Falls

25' falls visible from picnic area.



Quanassee Path

Two-mile Cherokee History Trail, downtown, depicting culture of Cherokee people at five historical sites.

DISPENSARY

Bauer Brand

Bauer Brand Cannabis specializes in the production and sale of culturally correct cannabis products.
 43 Main St. Hayesville, NC
 828-371-0752
 bauerbrandcannabis.com

THEATER

Peacock Performing Arts Center

Events, children's plays, dance, concerts, shows, entertainment.
 301 Church St. Hayesville
 828-389-2787
 thepeacocknc.org

VISITOR INFORMATION

Clay County Chamber of Commerce

Chamber of Commerce and visitors center for information.
 96 Sanderson St.
 Hayesville, NC 28904
 828-389-3704
 claychambernc.com

Clay County Communities Revitalization Association

Visit historic courthouse, music sculpture, Cherokee homestead. Hike/Bike 15-mile Jackrabbit Trails & Quanassee Path.
 PO Box 1533 Hayesville
 828-389-6531 • cccra-nc.org



Photo by James Kiegel

Experience HIGHLANDS, CASHIERS, SAPPHIRE & SCALY MOUNTAIN

37 MILES ← FROM SYLVA
19 MILES → TO FRANKLIN



ONLY 2.5 HOURS FROM ATLANTA, GEORGIA

5 VIBRANT COMMUNITIES:

- ★ **CASHIERS** – Offers gorgeous scenery and waterfalls.
- ★ **GLENVILLE** – Popular lakeside vacation community, Lake Glenville.
- ★ **HIGHLANDS** – Quaint town surrounded by Nantahala National Forest and situated at an elevation of 4,118 feet.
- ★ **SAPPHIRE** – Known for resorts, hiking, forests, stunning waterfalls. 8 miles from Cashiers.
- ★ **SCALY MOUNTAIN** – Winter and summer tubing, ice skating, gem mining, trout fishing, hiking trails. 6 miles from Highlands.

HIDDEN GEMS AND POPULAR ATTRACTIONS:

- ★ In the heart of Great Smoky Mountains, these communities offer fine dining, antique shops, golf courses, boutiques, art galleries and breweries.
- ★ **THE SHADOW OF THE BEAR** – Witness this natural phenomenon from February–March and in November.
- ★ **LAKE GLENVILLE** – Public beach access, swimming, boating.

HIGHLANDSCHAMBER.ORG
CASHIERSAREACHAMBER.COM

BLUEWAYS

Lake Glenville

Lake Glenville is a reservoir located 8 miles from Cashiers, North Carolina. It's a tourist destination for kayakers, canoers, water skiers and pleasure-boat enthusiasts who found a cool retreat in the Southeast's otherwise boiling summers



CULTURAL/MUSEUM

Highlands Museum & Historical Village

A village composed of several restored buildings, with historical exhibits in the museum.

524 N 4th St.

Highlands, NC 28741

828-787-1050

highlandshistory.com

Cashiers Historical Society

Exhibiting the largest known collection of handcrafted "plain-style" furniture, on-site walking trails, historic schoolhouse, pavilion with restrooms, picnic tables, Civil War Trail.

1940 NC 107 S

Cashiers, NC 28717

828-743-7710

cashiershistoricalsociety.org

DINING

Blue Hound Barbecue

BBQ crafted from locally sourced meats, produce and wood. Everything is made from scratch and with love!

7420 Dillard Rd

Scaly Mountain, NC 28775

706-800-8020

bluehoundbarbecue.com



GEM MINES & SHOPS

Jackson Hole Trading Post

Cleanest mine around. Help for inexperienced. On Waterfall drive between Franklin and Highlands. Handicap-accessible. Pets welcome. Open May 1–Dec. 1.

9770 Highlands Rd. Hwy 64 E

Highlands, NC 28741

828-524-5850

jacksonholegemmine.com

LODGING

Hotel Cashiers

A pet friendly boutique inn and wine bar located in the center of Cashiers.

7 Slab Town Rd. Cashiers

828-743-7706

hotelcashiers.com

OUTDOOR ACTIVITY

Highlands Outpost

Snow tubing, ice skating, summer tubing, gem mine, trout fishing, gift shop, café, family-friendly.

7420 Dillard Rd.

Scaly Mountain, NC 28775

828-526-3737

highlandsoutpost.com

**Highlands Aerial Park**

Ziplines! Located at an elevation of 3,620 feet, high atop High Holly Mountain.

9625 Dillard Rd.

Scaly Mountain, NC 28775

828-526-8773 • 855-947-6344

highlandsaerialpark.com

**Lake Glenville Scenic Waterfall Cruises**

Chasing Waterfalls aboard the Biggest Boat, on the Highest Lake in the Oldest Mountains

2799 Pine Creek Rd

Cullowhee, NC 28723

828-526-6300

WorldClassWaterfalls.com

OUTDOOR ACTIVITY

Waterfall Byway

Strangely powerful or eerily tranquil, waterfalls do have a way of casting a spell. If you happen to be a fan, this is your byway. Winding 98 miles and featuring more than 200 distinct waterfalls, it begins at U.S. 64's intersection with NC 215. 98 miles • 3.5 hours



Whiteside Mountain (Nantahala National Forest)

Open year-round. Hiking trails, scenic views.



Bridal Veil Falls

Visible from U.S. 64, this beautiful waterfall drops 120 feet.



Cullasaja Falls

Visible from U.S. 64, this 250-foot waterfall is accessible by a 0.5-mile steep trail.

Dry Falls

3.5 miles west of Highlands, a paved walkway takes you to and through the 75-foot falls

Whitewater Falls

Open year-round Restrooms, hiking trails, scenic views. At 411 feet, this is the highest waterfall in the eastern U.S. From U.S. 64 to Sapphire, turn onto NC 281. Entrance is in about 8 miles.

Panther Valley

Nearly 30 miles of trails branches off from the area's old main roads, 21 of which are open to bikes.

Whiteside Mountain Trail

2 miles, easy Trailhead: Whiteside Mountain parking area. The loop trail features a view of the highest vertical drop in the eastern U.S. at 750 feet.



THEATER

Mountain Theatre Company

Mountain Theatre Company is Western North Carolina's premier professional theatre, producing Broadway-caliber productions from June - December.

507 Chestnut Street
Highlands, NC 28741
828-526-2695
mountaintheatre.com

VISITOR INFORMATION

Cashiers Area Chamber of Commerce

Visit for area information, maps, event calendars, dining, shopping, recreation guides and more.

202 Hwy U.S. 64 W
Cashiers, NC 28717
828-743-5191
cashiersareachamber.com

Highlands Chamber of Commerce & Visitor Center

Conveniently located on Hwy 64 to help visitors plan their stay! (Free parking behind building)
108 Main St.
Highlands, NC 28741
828-526-2112
highlandschamber.org

ANNUAL EVENT

Highlands Motoring Festival

Highlands, NC: Annual automobile related event spanning four days, showcasing collectible and concours caliber cars. 501 c (3)
highlandsmotoringfestival.com

ZIPLINES!



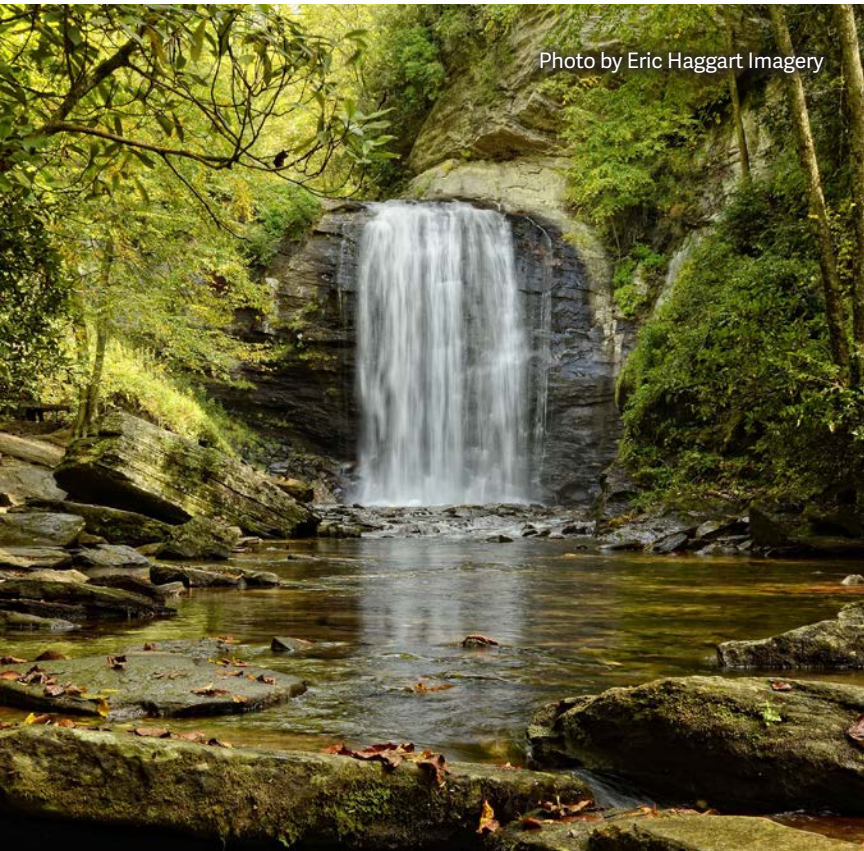
Highlands
AERIAL PARK

highlandsaerialpark.com

9625 Dillard Road Scaly Mountain, NC 28775

828.743.8245

Photo by Eric Haggart Imagery



Experience **MURPHY & ANDREWS**

55 MILES ← FROM FONTANA

15 MILES → TO HAYESVILLE



45 MILES FROM FRANKLIN, NC

FIND YOUR ADVENTURE OR TAKE IN THE
BREATHTAKING MOUNTAIN VIEWS

2 VIBRANT COMMUNITIES:

- ★ **MURPHY** – Situated at the confluence of the Hiwassee & Valley rivers. Filled with mountains, lakes, rivers and streams providing breathtaking views.
- ★ **ANDREWS** – Marvel at the beautiful Andrews Valley. Unlimited outdoor activities. Some structures are listed on the National Historical Register.

HIDDEN GEMS AND POPULAR ATTRACTIONS:

- ★ **FIELDS OF THE WOOD** – Celebrate Christian heritage and see the Ten Commandments built on a mountain. Picnic area. Free admission.
- ★ **HANGING DOG RECREATION AREA** – Five minutes from Murphy, great destination for scenic drive or a day outing. Offers year-round access to Hiwassee Lake. Boating, fishing and picnicing.
- ★ **HERITAGE PARK DISC GOLF COURSE** – The park offers public 18-hole disc golf course, jogging, walking and open space. 155 Wilson St. Andrews, NC

VISITCCNC.COM
 VISITANDREWSNC.COM
 CHEROKEECOUNTYCHAMBER.COM

AGRITOURISM

Visit NC Farms

Find area agritourism, including fresh local food, activities, farmer's markets, trails, and local shopping. Contact Cherokee County Chamber of Commerce at 828-837-2242 or info@cherokeecountychamber.com for more information.

The Murphy Farmer's Market

100% locally sourced crafts & produce. Find over 40 vendors featuring fresh veggies, fruits, livestock, plants, jams, jellies, goats milk, cheese, meats, chicken, baked goods, and honey. Downtown Murphy at the L & N Depot. 9:00 am–1:00 pm. April–Oct.
4 Railroad St. Murphy, NC
828-644-8677

ARTS/CRAFTS

John C. Campbell Folk School

Since 1925. Offering courses in craft, music and dance.

On-campus housing. Visitors welcome.
1 Folk School Rd.
Brasstown, NC 28902
828-837-2775 • 800-365-5724
folkschool.org



Olive's Porch

A Folk School experience in downtown Murphy featuring classroom space, a retail shop showcasing the work of Appalachian artists, and a studio space dedicated to the Artists in Residence program.
27 Peachtree St. Murphy, NC
828-837-1885 • olivesporch.org



Cherokee County Arts Council

The CCAC offers monthly gallery exhibits and original art for sale in the Open Studios, as well as musical performances and other regular events!
33 Valley River Avenue
Murphy, NC 28906
828-233-5624
cherokeeartsCouncil.org

BREWERY/WINERY

Buck Bald Brewing

Award-winning craft brews, cocktails, wine & NA options in a family-friendly Taproom and pet-friendly patio in downtown Murphy, NC.
110 Valley River Ave,
Murphy, NC 28906
770-316-9971
buckbaldbrewing.com

FernCrest Winery

Handcrafted wines, wine tastings, wine by bottle or glass; local cheeses, meats, nuts, and jams; local art, wine merchandise, custom baskets.
1060 Main St. Andrews, NC
828-321-1600
ferncrestwinery.com

Hoppy Trout Brewing Company

Microbrewery, handmade Sicilian brick-oven pizza, appetizers, salads.
911 Main St. Andrews, NC
828-835-2111
hoppytroutbrewing.com

Valley River Vineyards

A small family owned vineyard and developed in 1997. The vineyard offers North America grapes and Vinifera grapes. Camping, wildlife watching & walking trails.
4689 Martins Creek Rd.
Murphy, NC 28906
828-516-9772
valleyrivervineyardsnc@gmail.com
valleyrivervineyards.com



Andrews Trail Tour

CASINO

Harrah's Cherokee Valley River Casino & Hotel



75,000+ square feet gaming floor, hotel, dining, spa, indoor pool, bowling, arcade, WSOP Poker Room and more!
777 Casino Pkwy
Murphy, NC 28906
828-422-7777
caesars.com/harrahs-
cherokee-valley-river

CULTURAL/MUSEUM

Andrews Art Museum

Exhibits featuring local and regional artists. Corner of Chestnut and Third streets.
125 Chestnut St.
Andrews, NC 28901
828-361-2781 • vcahs.com

Cherokee County Historical Museum

Artifacts and exhibits showcasing local history, Trail of Tears Interpretations Center.
87 Peachtree St.
Murphy, NC 28906
828.837.6792
cherokeecounty-nc.gov/183/
historicalmuseum

DINING

Harrah's Cherokee Valley River Casino & Hotel



Food market.
777 Casino Pkwy
Murphy, NC 28906
Nathan's Famous
Panda Express
Earl of Sandwich
Starbucks
Moe's Southwest Grill
Brew Brothers
Ramsay's Kitchen by
Gordon Ramsay

Hanging Dog General Store & Cafe

Hanging Dog General Store & Cafe has been serving the community for over 75 years, a local gathering place we provide good food and even better times.
2345 Hanging Dog Rd,
Murphy, North Carolina 28906
828-837-3707
facebook.com/
hangingdoggeneralstore

Morning Fog Coffee and Eats

Cozy coffee and eats in a restored 1920 farmhouse, crafted with passion by a family who turned their dream into Andrews' favorite gathering spot.
1219 Main Street
Andrews, NC 28901
828-346-7822
morningfogcoffee.com

EVENT/WEDDING

Hawkesdene



Luxury private mountain estate on 70 acres for groups. Destination weddings, family reunions, retreats, 41 bedrooms.
381 Phillips Creek Rd.
Andrews, NC 28901
828-321-6027 • 800-447-9549
hawkesdene.com

McGuires Millrace Farm

Wedding & Elopement Venue. Special Events, Celebrations, Galas. Seating for up to 200. Lodging: 6 rooms/30 people.
600 Hendrix Rd.
Murphy, NC 28906
828-837-0015
mcguiresmillracefarm.com

FAMILY ATTRACTION

Andrews Valley Rail Tours

Andrews Valley Rail Tours offers RailBike rides and Speeder Cart Tours in Andrews, NC. Enjoy the beauty of the valley from a different perspective.
345 Locust St.
Andrews, NC 28901
828-557-4021
andrewsvalleyrailtours.com

Ultra Star Multi-Tainment Center



Harrah's Cherokee Valley River, hottest new arcade games, Strikes Lounge, boutique bowling, billiards, packages, events, parties.
777 Casino Pkwy
Murphy, NC 28906
828-422-5306 • ultrastarnc.com

LODGING

Quality Inn

The Quality Inn in Andrews is located in the foothills of the Great Smoky Mountains and is minutes away from Harrah's Cherokee Valley River Casino. The hotel offers free hot breakfast and is close to nearby attractions.

138 Upper Valley River Ln.
Andrews, NC 28901
828-321-2176

choicehotels.com/north-carolina/andrews/quality-inn-hotels

CAMPGROUND

The Holler

The Holler is a hostel and vacation rental welcome to all. We are ADA accessible, as well as dog friendly, so no need to leave Fido at home.

4021 Pisgah Rd
Andrews, NC 28901
(720) 301-4130
thehollerhostel.com



Persimmon Creek RV Park

Tagged as the "prettiest RV park in Western North Carolina", Our tristate location is ideal for day trips. Our pond & creekside sites make it fun!

200 Sunny Point Rd. Murphy, NC

828-644-5800
persimmoncreekrvpark.com



OUTDOOR ACTIVITY

The Benton MacKaye Trail

Approximately 300 miles in length and starts 0.2 miles down the Appalachian Trail from Springer Mountain, GA traveling north through TN and NC. Features many scenic views of surrounding mountains, waterfalls, streams and wildlife. For more information visit bmta.org and Facebook.

Welch Farm River Access

This 57-acre property along the Valley River is conserved and open to the public for fishing, walking, wildlife viewing, or as a boat access. A portion is leased to local farmers and a portion is left wild for the numerous bird species you will encounter. Located off Hwy 74 between Andrews and Murphy, and designated by a brown DOT sign. mainspringconserves.org

Mountains-to-Sea Road Bike Route

Murphy is the start of this on-road 736-mile multi-use bicycle route. The route crosses the entire state, from west to east, through the mid-section of North Carolina. Routes are detailed in the list of maps provided by the North Carolina Department of Transportation. Maps can be ordered at no cost. ncdot.gov/bikeped



TransAmerica Trail

transamtrail.com

Piney Knob Bike Trails

Wonderful 13.5-miles of trails for hikers and cyclists alike. When on Hwy 74, heading toward Murphy, take a right at the Casino intersection onto Regal Rd. Travel about .5 miles until you reach Piney Knob Rd on the right. This is a narrow gravel road about 3 miles long to get to the parking area of the trails.

pineyknobtrails.com

Murphy River Walk and Canoe Trail

Beautiful greenway with 2+ miles of walking trails. The trail follows the Valley River and the Hiwassee Rivers. Whether you take the trail on foot or put in for an easy paddle along the canoe trails, you'll enjoy the ecology and cultural heritage along the way.

OUTDOOR ACTIVITY

Cherokee Lake Trail (Nantahala National Forest)

Open year-round. Picnic, restrooms, drinking water, handicap-accessible, fishing.



REAL ESTATE

Carolina Mountain Homes

Experienced real estate since 1978. Great customer service, marketing and negotiating. Licensed in North Carolina and Georgia. 5530 W U.S. 64 Hwy. Murphy, NC 28906 828-837-7322 carolinamtnhome.com



WELLNESS

Graciela Laurent Photography

WNC's Only Boudoir Photography & Soulful Wellness Retreat Destination – Luxury Portraits + Reiki, Therapeutic Forest Bathing, Cacao Ceremonies & More! 849 Connahetta Street Murphy, North Carolina 28906 828-998-3988 gracielalaurent.com

VISITOR INFORMATION



Murphy Visitor Center and Andrews Rest Area

Tourism information center with locations in Murphy, NC and Andrews, NC.

20 Tennessee St. Murphy
50 Cover Ave. Andrews
828-557-0602 • visitccnc.com

Andrews Chamber & Welcome Center

Historic Downtown, RailBike Tours, Rafting, Biking, Hiking, Fishing, Shops, Restaurants, Wineries, Breweries, Festivals, Wagon Train.

955 Main St. Andrews
828-321-3584
visitandrewsnc.com

Cherokee County Chamber of Commerce and Welcome Center

On Hwy 64. Visit for resources in our area! Parking for cars and RVs. Pets welcome.

805 U.S. Hwy 64 W
Murphy, NC 28906
828-837-2242
CherokeeCountyChamber.com



NC Rest Area

Travel Information available Cherokee County at Andrews US Hwy 19/129

Carolina Mountain Homes

Real Estate since 1978

828-837-7322

www.CarolinaMtnHome.com

PEACEFUL,
Easy FEELING.

Visit Cherokee County

www.visitccnc.com



Cherokee County, NC

TOURISM DEVELOPMENT AUTHORITY

Experience SYLVA, DILLSBORO, BALSAM & CULLOWHEE

16 MILES ← FROM CHEROKEE

38 MILES → TO HIGHLANDS



21 MILES FROM FRANKLIN, NC

THESE TOWNS ARE SURROUNDED BY NANTHALA NATIONAL FOREST

4 VIBRANT COMMUNITIES:

- ★ **BALSAM** – Includes the highest point along the Blue Ridge Parkway in Jackson County.
- ★ **CULLOWHEE** – Home of Western Carolina University which offers robust performing arts scene!
- ★ **DILLSBORO** – Nestled along the Tuckasegee River, it's famous for pottery shops, and special events: ColorFest, WNC Pottery Festival & December Lights & Luminaries.
- ★ **SYLVA** – Sylva's Main Street frames the most photographed Courthouse in NC.

HIDDEN GEMS AND POPULAR ATTRACTIONS:

- ★ **ALE TRAIL** – The famous Ale Trail's main hub is downtown Sylva with 10 craft breweries. Field Guide: [DiscoverJacksonNC.com/AleTrail](https://www.discoverjacksonnc.com/AleTrail)
- ★ **HIKE PINNACLE PARK** – See panoramic views of Sylva, streams & waterfalls. Strenuous Terrain.
- ★ **TROUT CAPITAL OF NORTH CAROLINA** – Selfie time on Mill Street across from White Moon Coffee
- ★ **THE AMERICAN MUSEUM OF THE HOUSE CAT** – Private collection. 828-476-9376 [wnccatmuseum.org](https://www.wnccatmuseum.org)
- ★ **MOUNTAIN HERITAGE CENTER** – A regional resource for education, research and history. Located at Western North Carolina.

DISCOVERJACKSONNC.COM
DILLSBORONC.ORG
MOUNTAINLOVERS.COM

AGRITOURISM

Highland Hills Farm

Farm visits, events, photo sessions, field trips, & more are available by appointment only—join us for an unforgettable & educational farm experience.

128 Browning Rd Sylva,
Sylva, NC 28779
highlandhillsfarmllc.com
828-307-2276

Jackson County Farmer's Market

Farmer's market offering locally grown and crafted products. April–October: Wednesdays 3:30–6:30 at Innovation Station, Dillsboro. Saturdays 9–Noon at Bridge Park, Sylva. November–March, Saturdays at Bridge Park, Sylva.

110 Railroad Ave
Sylva, NC 28779
828-393-5236
facebook.com/
TheJacksonCountyFarmersMarket

ARTS/CRAFTS

Dogwood Crafters

50 years providing traditional and contemporary arts and crafts within our 11 rooms.

90 Webster St.
Dillsboro, NC 28725
828-586-2248
dogwoodcrafters.com

BLUEWAYS

Tuckasegee River

The Tuckasegee is a popular river for tubing, floating, canoeing, rafting and kayaking.
smokymountainblueways.com



CULTURAL/MUSEUM

American Museum of the House Cat

Experience a multi-media collection of feline antiques sure to delight, entertain, and educate the cat enthusiast.

5063 US 441 Hwy S
Sylva, NC 28779
828-476-9376
wnccatmuseum.org

**Mountain Heritage Center**

Extensive displays of Western North Carolina and Southern Appalachian history.

Western Carolina University
Second Floor Hunter Library
176 Central Dr. #240
Cullowhee, NC 28723
Call to confirm hours
828-227-7129
wcu.edu/engage/mountain-heritage-center/about-us/index.aspx

DINING

Jack the Dipper Ice Cream

Home of the Warm Waffle Cone.
280 Asheville Hwy Ste 4
Sylva, NC 28779
828-586-9441

Balsam Falls Brewing Co

Balsam Falls is known for their creative beer flavors and styles, cider variety, upscale pub offerings, and big personalities.
506 W Main St
Sylva, NC 28779
828-631-1987
balsamfallsbrewing.com

Blue Ridge Bootleg

Enjoy fresh, ethical coffee, live music, and a cozy, rustic ambiance in Sylva, NC. Perfect for relaxing or catching up with friends.

582 W Main St Sylva
828-307-2016
blueridgebootleg.com

Creekside Oyster House and Grill

Craving delicious seafood? Enjoy creekside dining, with fresh oysters and seafood, also steaks, chicken, sandwiches and burgers and more, full bar and weekly specials.

219 West Main Street
Sylva, NC 28779
Creeksideoysterhouse.com

Lulu's On Main

Award winning dining, featuring specials including steaks, seafood, chicken and vegetarian favorites, scrumptious homemade desserts. Covered outdoor seating.

678 W Main St. Sylva, NC 28779
828-586-8989 • lulusonmain.com

BREWERY/WINERY

Innovation Brewing

Taproom with house-made craft beers & guest taps including hard cider & wine! Food truck & pizza shop on-site.

414 W. Main St. Sylva, NC 28779
innovation-brewing.com
828-586-5918

Innovation Station

An Innovation Brewing taproom & event space. Craft beer, hard cider, wine, & more on tap! Rotating food trucks.

40 Depot Street
Dillsboro, NC 28779
Innovation-brewing.com
828-226-0262

Rivers & Rails Tavern

RNR Tavern serves craft brews and comfort fare with mountain views and river vibes in the heart of Dillsboro.

2 Dills Street
Dillsboro, NC 28725
828-354-0480
nrntavern.com

EVENT/WEDDING

The Applegate

Riverside venue for small weddings, events, and parties, with 4 prep rooms, flexible space, and a central location.

Call to learn more.
828-506-3463

High Country Travel & Catering

High Country Travel and Catering is your go-to source for hassle-free event transportation and exceptional catering in Western North Carolina.

1558 West Main St
Sylva, NC 28779
(828) 506-3463



american museum of the house cat
OPEN SEVEN DAYS A WEEK

Hours of Operation
Mon. - Sat. 10:00 - 5:00
Sun. 12:00 - 5:00

5063 US Hwy 441-South
Sylva, NC 28779
828-476-9376

IN SUPPORT OF
OF
CATMAN2 
ADOPT  DONATE  VOLUNTEER



WNCATMUSEUM.ORG
A PROUD MEMBER OF MUSEUMS FOR ALL

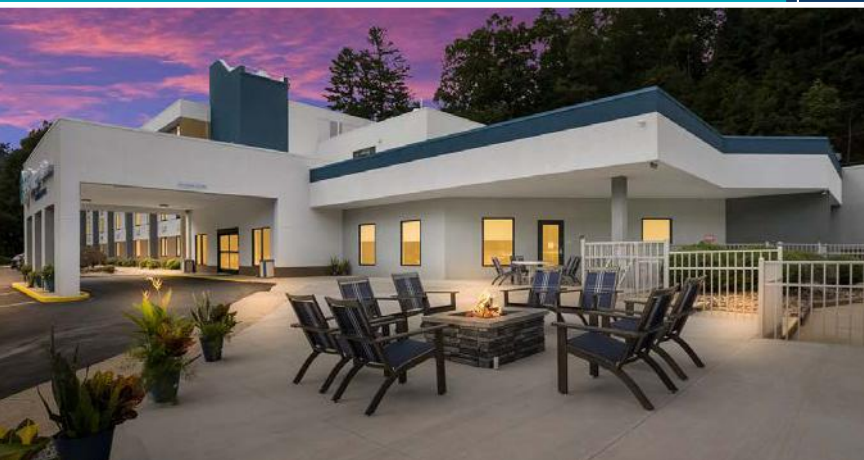


clarion
pointe[®]
BY CHOICE HOTELS

828.586.3315
2807 Hwy 74-East
Sylva, NC 28779

stay on pointe.™

At Clarion Pointe[®], we provide elevated essentials in just the right places for a sharper, more connected stay. Enjoy upscale accommodations with contemporary design touches, on-demand connectivity, modern fitness essentials, flexible meeting space, and curated food and beverage options. Rewind by the fire pit or take a dip in our seasonal outdoor pool. Being the closest hotel to the entrance of the Blue Ridge Parkway means you'll have easy access to outdoor adventure!



EVENT/WEDDING

Baxley's Chocolates

We offer premium, traditional handmade chocolates, brittles, fudge, and small batch ice cream and gelato. Crafting sweet memories is our business!

546 W Main St. Sylva, NC

828-631-3379

baxleyschocolates.com



FAMILY ATTRACTION

American Museum of the House Cat

Experience a multi-media collection of feline antiques sure to delight, entertain, and educate the cat enthusiast.

5063 US 441 Hwy S Sylva, NC

828-476-9376

wnccatmuseum.org



LODGING

Best Western Plus River Escape Inn & Suites

Immerse yourself in scenic beauty, unwind in modern comfort, and create unforgettable memories along the river's edge. Your perfect escape awaits!

248 WBI Dr.

Dillsboro, NC 28725

828-586-6060 • 800-780-7234

bwriverescape.com

Holiday Inn Express & Suites Sylva-Western Carolina Area

Newly renovated rooms for a fresh experience with unmatched hospitality. Indoor pool & hot tub. Full, hot breakfast bar with signature cinnamon rolls.

26 Rufus Robinson Rd.

Sylva, NC 28779

828-631-1111 • 800-HOLIDAY

hixsylva.com

Clarion Pointe Sylva Near Cherokee Area

Elevate your stay with upscale accommodations while you enjoy a delicious breakfast as well as the outdoor pool & fire pit. Closest hotel to the Blue Ridge Parkway.

2807 Hwy 74 E

Sylva, NC 28779

828-586-3315

choicehotels.com/nc237

Comfort Inn

Close to the beautiful

Smoky Mountains,

Western Carolina

University, Balsam

Mountain Preserve, Nantahala

Forest, Cherokee, hiking, and

fishing.

1235 E Main St.

Sylva, NC 28779

828-477-4950 • 800-300-8800

choicehotels.com/nc732



Outland Chalet & Suites

Outland Great Smoky Mountain is a Private 22 acre retreat & wedding venue offering Luxury Spa Suites, a 7 bedroom private residence. On-site trails with amazing views, pond and firepit.

285 Lone Oak Dr

Whitter, NC 28789

828-586-0251 • Stayoutland.com

CAMPGROUND

Moonshine Creek Campground

Cool and secluded on mountain stream five minutes from Blue Ridge Parkway, RV, tent, cabins. Pets welcome.

2486 Dark Ridge Rd.

Sylva, NC 28779

828-586-6666

moonshinecreek.com

OUTDOOR ACTIVITY

Tuckasegee Fly Shop

Sylva's trusted fly shop with expert guidance, top gear, and insider tips for exploring the Tuckasegee and Smoky Mountain waters.

530 W. Main Street

Sylva, NC 28779

828-488-3333

tuckflyshop.com

Appalachian Mural Trail

Appalachian historical murals within driving distance of the Blue Ridge Parkway. Map has parkway milemarker directions. 828-293-2239 • muraltrail.com

OUTDOOR EVENTS**Concerts on the Creek**

Free and open to the public. Donations encouraged. Bring a chair or blanket and enjoy the shows. No alcohol, smoking or coolers. Dogs must be on a leash. Food and Music. Concerts are located at the Bridge Park gazebo in Sylva every Friday from 7-9 p.m., Memorial Day through Labor Day. Check website for current details. 828-586-2155 mountainlovers.com/on-the-creek

RAFTING/KAYAKING**Smoky Mountain River Adventures**

Join the Adventure! White Water Rafting... Fun for the whole family. 5036 U.S. Hwy 74 Whittier, NC 28789 smokymountainriveradventures.com 828-586-5285

REAL ESTATE**Western Carolina Properties – Dillsboro**

Real estate in Sylva, Cullowhee, Bryson City, Franklin, Webster, and throughout WNC Mountains. 78 Front St. Dillsboro, NC 28725 828-586-3442 • searchwnc.com

SHOPPING**Baxley's Chocolates**

We offer premium, traditional handmade chocolates, brittles, fudge, and small batch ice cream and gelato. Crafting sweet memories is our business! 546 W Main St. Sylva, NC 28779 828-631-3379 baxleyschocolates.com

**Lazy Bear General Store**

Gifts, souvenirs, gourmet specialties, sample tastings, dressings, jams, sauces, local roasted coffee, home accents. 104 Front St. Dillsboro, NC 28725 828-356-6198 thelazybeargeneralstore.com

The Mountain Laurel Shop

Mountain Laurel Shop offers unique gifts, nostalgic candies, and local handcrafted items. 556 West Main Street Sylva, NC 28779 828-631-3047 mountainlaurelgiftshop.com

THEATER**WCU John W. Bardo Fine & Performing Arts Center**

Western Carolina University 828-227-3591 wcu.edu/bardo-arts-center

GENERAL SERVICES**BalsamWest FiberNET**

Your local WNC broadband provider delivering secure, reliable fiber connectivity to support businesses, communities, and regional growth. 35 Bonnie Ln Sylva, NC 28779 828-339-2900 • balsamwest.net



546 West Main St.
Sylva, NC 28779
(828) 631-3379

BaxleysChocolates.com

BAXLEY'S
Chocolates

Handmade Small Batch Chocolates

Crafting Sweet Memories

Open Monday-Saturday



Best Western PLUS[®]

248 WBI Drive, Dillsboro, NC 28725

828.586.6060

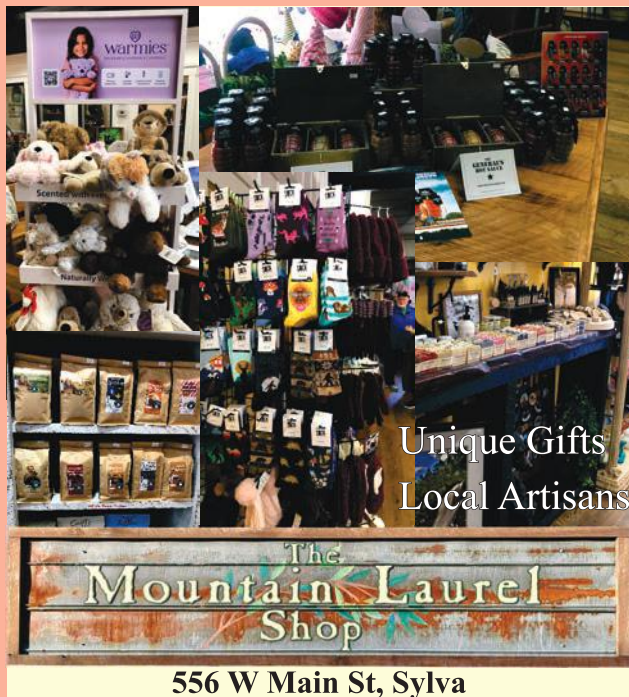
bwriverscape.com



AN **IHG**® HOTEL

26 Rufus Robinson Road
Sylva, NC 28779
828.631.1111

**JUST
RENOVATED
2024!**



Unique Gifts
Local Artisans

GENERAL SERVICES

828 Custom Printing

Professional screen printing, embroidery & promo products with the reliable service your brand deserves.

919 Haywood Road
Sylva, NC 28779 • 828-586-1828
sales@828customprinting.com
828customprinting.com

EVENTS

Comicon Corp. Of America

Comic-Cons, festivals, conferences. "Matman says tell your friends!"

843-340-1778
WNCcomicon.com
dr.john.stamey@gmail.com

VISITOR INFORMATION

Jackson County Chamber & Visitor Center



NC Trout Capital! Stop by for a free fly-fishing map, dining guide, waterfall map.
773 W Main St. Sylva, NC 28779
828-586-2155 • 800-962-1911
mountainlovers.com

Jackson County TDA

From epic hiking and the WNC Fly Fishing Trail, to unique breweries, it's your escape.

discoverjacksonnc.com



Town of Dillsboro

Rediscover the quaint mountain village of Dillsboro, NC! Eat, Shop, Stay, Play in Dillsboro.

42 Front St.
Dillsboro, NC 28725
828-586-1439
dillsboronc.info

Dillsboro Merchants Association

Visit charming Dillsboro, SHOP, DINE, RAFT, STAY.

PO Box 634
Dillsboro, NC 28725
828-631-0900
Dillsboronc.org



MOMENTS ARE MADE AT THE PEAK.

Lose yourself in the stunning landscapes of the Great Smoky Mountains. Settle into the peaceful serenity of mountain towns, national forests, and hidden waterfalls. No matter where you go, peak moments have a way of finding you in Jackson County. [DISCOVERJACKSONNC.COM](https://www.discoverjacksonnc.com)

CASHIERS ✦ CHEROKEE
DILLSBORO ✦ SYLVA

Experience WAYNESVILLE, MAGGIE VALLEY & CANTON

31 MILES ← FROM ASHEVILLE

26 MILES → TO CHEROKEE



37 MILES FROM FRANKLIN, NC

APPALACHIAN EXPERIENCE FILLED WITH OUTDOOR
ADVENTURE AND FAMILY ACTIVITIES!

3 VIBRANT COMMUNITIES:

- ★ **WAYNESVILLE** – Picturesque community that embodies the Culture and Heritage of Western NC.
- ★ **MAGGIE VALLEY** – Nestled in Nature's Glory!
- ★ **CANTON** – National Register of Historic Places.

HIDDEN GEMS AND POPULAR ATTRACTIONS:

- ★ **BLUE RIDGE PARKWAY** – Reaches its highest elevation in Haywood County, blueridgeparkway.org
- ★ **CATALOOCHEE SKI AREA** – Enjoy seasonal skiing and snow tubing in Maggie Valley.
- ★ **CATALOOCHEE VALLEY** – Famous for its elk population and elk sightseeing tours.
- ★ **GREAT SMOKY MOUNTAINS NATIONAL PARK** – Encompasses over one-half million acres. nps.gov/grsm
- ★ **LAKE LOGAN** – 260 acres of land situated in a pristine valley near the Blue Ridge Parkway.
- ★ **PIGEON RIVER** – Flows from North Carolina to east Tennessee.

VISITHAYWOOD.COM
HAYWOODCHAMBER.COM
MAGGIEVALLEY.ORG

AGRITOURISM

**Boyd Mountain
Christmas Tree Farm**

Choose-n-Cut Fraser
Firs, paved parking,
restrooms, gift items in
hospitality tent. Dogs on leash
welcomed. Mid November thru
first week in December. Located
at Boyd Mountain Log Cabins
445 Boyd Farm Rd.
Waynesville, NC 28785
828-926-1575 • 828-926-8888
boydmountain.com

**Buffalo Creek
Vacations**

Come see our
American bison. Interact with
mini-donkeys, goats, mini-
horses and llamas. Call for
reservations.
Clyde, NC 28721
828-550-0960
buffalocreekvacationsNC.com

**Haywood's Historic
Farmer's Market**

Fresh local produce, seafood,
baked goods, goat cheese,
herbal products, meat, eggs,
plants, flowers, preserves,
honey and heritage crafts. Live
music. Saturdays, 9am-12pm,
April-December. Rain or shine.
250 Pigeon Street (in the
parking lot of the Hart Theater).
Waynesville, NC 28785
waynesvillefarmersmarket.com

Waynesville Tailgate Market

Fruits, vegetables, black
walnuts, organic food and
other homemade products.
Wednesday & Saturday,
8-noon; Mid-May to end
of October.

171 Legion Drive at the
American Legion in Waynesville
behind Bogart's restaurant.
828-456-1830
visitsmokies.com/attractions/
waynesville-tailgate-market

BREWERY/WINERY

**The Scotsman
Public House**

Craft drinks, hearty
pub fare, and Scottish-
inspired charm come together
at this beloved Waynesville
hangout for locals and visitors.
37 Church St
Waynesville, NC 28786
828-246-6292
scotsmanpublic.com

**B&C Winery**

Small boutique winery with a
large variety of wine available.
2427 Soco Rd.
Maggie Valley, NC 28751
828-550-3610
bcwinerync.com

YOUR ADVENTURE AWAITS AT
CATALOOCHEE RANCH

Join us for a spectacular meal, luxurious
accommodations, authentic Ranch adventures,
and to experience our genuine hospitality.



(828) 926-1401 | CATALOOCHEE RANCH.COM

CULTURAL/MUSEUM

Canton Area Historical Museum

Displays focusing on the cultural history of Canton and Haywood County.
36 Park St.

Canton, NC 28716

828-646-3412

blueridgeheritage.com/destinations/canton-area-historical-museum

Museum of North Carolina Handicrafts at the Shelton House

Featuring unique works from some of the state's most acclaimed artisans.

49 Shelton St.

Waynesville, NC 28786

828-452-1551

sheltonhouse.org

Wheels Through Time Museum

The museum is home to the world's premier collection of rare and vintage American motorcycles. Open April - November.

62 Vintage Ln.

Maggie Valley, NC 28751

828-926-6266

info@wheelsthroughtime.com
wheelsthroughtime.com

DINING

The Scotsman Public House

Elevated pub fare, crafted cocktails, world beers, and Scottish charm make The Scotsman a favorite for locals and guests.

37 Church St

Waynesville, NC 28786

828-246-6292

scotsmanpublic.com



Jack the Dipper Ice Cream

Home of the Warm Waffle Cone.

76 Waynesville Plaza

Waynesville, NC 28786

828-246-9766 • jackthedipper.com

Crown & Thistle Tea Room

Cozy tea room that serves over 40 loose-leaf teas where you can enjoy a classic Afternoon Tea or walk-in lunch options.

62 Overbrook Street, Suite C

Waynesville, NC 28786

828-246-0616

crownandthistletearoom.com

BOYD MOUNTAIN

Log Cabins & Christmas Tree Farm



Waynesville/Maggie Valley, NC

828.926.1575

BOYDMOUNTAIN.COM

Cataloochee Ranch

Ranch cuisine re-imagined. Weekday Lunch, Weekend Brunch, and Nightly Dinner. Reservations required.

119 Ranch Drive

Maggie Valley, NC 28751

828-926-1401

CataloocheeRanch.com



Fat Buddies Ribs and BBQ of Waynesville

Family-style BBQ, baby back ribs, smoked pork, smoked beef, smoked chicken, hand-cut steaks.

193 Waynesville Plaza

Waynesville, NC 28786

828-456-6368

fatbuddiesribsandbbq.com

Here, A Picture Is Worth 2,000 Words.



VISIT
HAYWOOD
WESTERN NC MOUNTAINS

From mountain-top selfies to golden-hour group shots, Haywood County, NC, brings the backdrop. You bring the energy.

[VisitHaywood.com](https://www.VisitHaywood.com)

LODGING

The Valley Inn

Clean, comfy, pet-friendly rooms in central Maggie Valley—just minutes from the Blue Ridge Parkway and perfect for a relaxed mountain stay.
236 Soco Rd
Maggie Valley, NC 28751
828-926-1240
valleyinnmaggie.com

Andon-Reid Inn

Top 25 USA B&B, centrally located, seven elegant en-suite rooms, delicious complimentary breakfast, mountain views.
92 Daisy Ave.
Waynesville, NC 28786
828-452-3089 • 800-293-6190
andonreidinn.com



Boyd Mountain Log Cabins

Nine historic log cabins on 150 acres with fishing, hiking and a Christmas tree farm.
445 Boyd Farm Rd.
Waynesville, NC 28785
828-926-1575
boydmountain.com



Best Western Smoky Mountain Inn

Gateway to the Smokies, breathtaking mountain views, closest hotel to the Blue Ridge Parkway.
130 Shiloh Trail
Hwy 74, Exit 98
Waynesville, NC 28786
828-456-4402
Bestwestern.com/waynesville



Buffalo Creek Vacations

Where the buffalo roam and we welcome guests to stay in cabins or a caboose. Call or check our website.
Clyde, NC 28721
828-550-0960
buffalocreekvacationsnc.com



Cataloochee Ranch

A destination vacation spot offering mountain top lodging, dining, horseback riding, and hiking.
119 Ranch Drive
Maggie Valley, NC 28751
828-926-1401
CataloocheeRanch.com



Country Cabins

Authentic log cabins in mountain setting. Fireplaces, hot tubs, rocking chairs, covered porches, open year-round. Pets welcome.
171 Bradley St.
Maggie Valley, NC 28751
828-926-0612 • 888-222-4611
countrycabinsmv.com



Lake Junaluska

A beloved retreat center in the Western North Carolina mountains. Recharge and renew at Lake Junaluska. Come for a personal getaway or family vacation.
759 N Lakeshore Drive
Lake Junaluska, NC 28745
828-452-2881
lakejunaluska.com

Oak Park Inn

Downtown with old-fashioned, friendly service, enjoy walk to shops, boutiques, restaurants, pubs, movie, library, churches. 37 bedroom inn on Main Street.
196 S Main St.
Waynesville, NC 28786
828-456-5328
oakparkinn-waynesville.com

Premier Vacation Rentals

Providing quality vacation homes in the Smoky Mountains of North Carolina and Eastern Tennessee.
2787 Soco Rd.
Maggie Valley, NC 28751
828-926-6025
melissa@PVRNC.com
premiermaggierentals.com

The Swag

Romantic, hiking hideaway at 5,000 ft. elevation bordering Great Smoky Mountains N.P. Open February through December. Reservations required.
2300 Swag Rd.
Waynesville, NC 28785
828-926-0430 • TheSwag.com

SHOPPING**The Axe Tavern**

The Axe Tavern, where adventure meets aim! Step into a D&D-inspired world of axe throwing, fun and fantasy in the heart of Maggie Valley!
2773 Soco rd
Maggie Valley, NC 28751
828-944-0384
axetavernbrews.com

OUTDOOR ACTIVITY**Buffalo Creek Vacations**

Visit our Bison Ranch with advanced reservations. See bison, llamas, donkeys, goats, and mini-horse rides available. Ask about feeding animals. Call or check our website.
Clyde, NC 28721
828-550-0960
Buffalocreekvacationsnc.com

Cataloochee Ranch

Find your Cataloochee moment with our range of inspired High Country experiences: horseback riding, adventure course, archery, UTV tours, hiking, and more!
119 Ranch Drive
Maggie Valley, NC 28751
828-926-1401
CataloocheeRanch.com

**Scenic Tours and Adventures**

Gather your friends and family for an incredible UTV, Elk adventure in the wilderness of The Great Smoky Mountains. Head up the mountain to explore 25+ miles of dirt and gravel trails that soar above a mile high.
2961 Soco Road
Maggie Valley, NC 28751
828-944-0208
Scenictoursandadventures.com

**Soco Crafts & Tower**

Come see the best view in the Smokies from our 9-story observation tower! Open April–November since 1947.
6638 Soco Rd.
Maggie Valley, NC 28751
828-926-2807
sococrafts@outlook.com

Tuckaseegee Fly Shop

Waynesville's go-to fly shop offering expert guidance, quality gear, and local knowledge for unforgettable Smoky Mountain fishing.
44 Depot St
Waynesville, NC 28786
828-488-3333
tuckflyshop.com

Sunburst (Pisgah National Forest)

Open May 1 - October
Camping, picnic, restrooms, trailer space, water, fee required.

**Sunburst Falls**

A beautiful roadside waterfall that flows under a 1930's era stone bridge. 37 miles from Asheville, south of Canton along NC Hwy. 215. Located 7.4 miles south of Lake Logan.
Hwy. 215
Canton, NC 28716

Cataloochee

Camping, fishing, historical structures, horse camp, self-guiding auto tour, wildlife-watching. 39 miles from Cherokee, 65 miles from Gatlinburg, and 21 miles from Waynesville.
nps.gov/grsm/planyourvisit/cataloochee.html

Mouse Creek Falls

Big Creek Trail follows an old railroad grade. At 1.4 miles the trail passes Midnight Hole Falls, a deep picturesque pool a 6' falls. At 2.1 miles a left leads to a bench where hikers can rest and view Mouse Creek falls. The falls are 45' in height.
nps.gov/grsm/planyourvisit/mouse-creek-falls.html

OUTDOOR ACTIVITY

Mountains-to-Sea Trail

This trail is North Carolina's state hiking trail. Stretches 1175 miles from the Great Smoky Mountains to the Outer Banks, stopping at many of our state's most beautiful places along the way.

mountainstotheseatrail.org

SHOPPING

Cabbage Rose

Cabbage Rose is your destination store in Beautiful Maggie Valley. 10,000 sq feet of "Nothing You Need but Want" 3388 Soco Rd Maggie Valley, NC 28751 828-926-3079 cabbagerose.com

Mast General Store

Mercantile packed with traditional fashions, comfortable footwear, hiking gear, hundreds of candies, & country gourmet foods. Pets welcome.

63 N Main St. Waynesville, NC 828-452-2101 mastgeneralstore.com



Pinnacle Farms

Pinnacle Farms is a breath-taking cut flower farm. We offer you-pick flowers, custom arrangements, DIY flower buckets, and more! Open April–October.

2900 Old Balsam Road Waynesville, NC 28786 pinnaclefarmsnc@gmail.com pinnaclefarmsnc.com

Waynesville Soda Jerks

We make high quality & unique craft sodas made from the finest Southern Appalachian grown ingredients. Gift shop open Tuesday–Saturday from 9–5. 35 Bridges St. Waynesville, NC 828-278-8589

Waynesvillesodajerks.com

Maggie Mountaineer Crafts

Wonderful homemade fudge. Handmade soaps, high quality, T-shirts, and sweatshirts. Come see us for experience. The whole family will love.

2394 Soco Road Maggie Valley, NC 828-926-3129 Maggiemountaineercrafts.com

WELLNESS

Sundarah Wellness

Advanced massage therapy, skin care, ayurveda and private yoga services offered in Maggie Valley. Visit us online or call to book!

461 Moody Farm Rd Maggie Valley, NC 828-944-0288 sundarahwellness.com

VISITOR INFORMATION

Town of Maggie Valley

Maggie Valley Festival Grounds hosts diverse choice of festivals, shows & fairs such as Plott Fest.

3987 Soco Rd. Maggie Valley, NC 828-926-0866

Haywood Chamber of Commerce

Leadership, advocacy, development, innovation, entrepreneurship magic, mountain living, vacationing, hospitality, adventure. Pristine waterfalls, panoramic vistas.

370 North Main St. Suite 305 Waynesville, NC 28786 828-456-3021 haywoodchamber.com

Haywood County Tourism Development Authority



We invite you to experience our local brews, shopping, galleries, horseback riding, hiking.

91 N Lakeshore Dr Suite 2 Lake Junaluska, NC 28745 828-944-0761 visithaywood.com

Maggie Valley Chamber of Commerce

A perfect spot to reflect, renew and rediscover what vacations used to be.

3933 Soco Rd. Maggie Valley, NC 828-926-1686 • 800-624-4431 maggievalley.org

YOUR DESTINATION FOR

Sweet Memories



MAST GENERAL STORE[®]
— SINCE 1883 —

63 N. Main St. • Downtown Waynesville • (828) 452-2101

MASTGENERALSTORE.COM • [f](#) [i](#) [e](#) [x](#) [j](#)

Experience **DILLARD & CLAYTON, GEORGIA**

107 MILES  FROM ATLANTA

40 MILES  TO DILLSBORO



22 MILES FROM FRANKLIN, NC

A FAVORITE STOP FOR A VARIETY OF OUTDOOR
RECREATIONAL OPPORTUNITIES

2 VIBRANT COMMUNITIES:

- ★ **DILLARD** – Dillard, Georgia is a tiny mountain crossroads with antique shops, walkable storefronts, roadside farm stands, country cafés, and scenic Blue Ridge views.
 - ★ **CLAYTON** – Classically beautiful mountain enclave and old rail town with a main street lined with unique shops, galleries, dining and lodging.
-

HIDDEN GEMS IN RABUN COUNTY:

- ★ **BLACK ROCK MOUNTAIN STATE PARK**
- ★ **TALLULAH FALLS**
- ★ **FLY FISHING** – Shady Creek Expeditions
- ★ **FARM TO TABLE CAPITOL OF GA**
- ★ **BLUEHOUND BBQ** – Bluehound BBQ's Kyle Bryner awarded Master of 'Cue on Food Network's "BBQ Brawl" Season 6

DILLARDGEORGIA.COM
CITYOFCLAYTON.GOV
RABUNCHAMBER.COM

FAMILY ATTRACTION

Hillside Orchard Farms, Inc.

Family, fried pies, fritters, locally made jams, pickles, relish, ciders, Seasonal corn maze, hayrides, gem mine, barnyard, train, field trips.

18 Sorghum Mill Dr.
Lakemont, GA 30552
706-782-2776
hillsideorchard.com

CULTURAL/MUSEUMS

Satolah Creek Farm Studios

An artist-run farm with cottage or cabin lodging, pottery and woodworking studios, and workshops for overnight guests.
2220 Highway 28
Clayton, GA 30525
706-989-9669
SatolahCreekFarm.com/things-to-do

**Foxfire Museum & Heritage Center**

Explore our Appalachian Village with over 20 captivating log structures, some over 200 years old. Bring the kids to play in our miniature cabins and try walking on stilts. Hike through history and see the real Appalachia!
98 Foxfire Ln.
Mountain City, GA 30562
706-746-5828
foxfire.org

Foxfire
Village Museum & Mercantile

98 Foxfire Lane, Mountain City, GA
Next to Black Rock Mountain State Park
30 minutes south of Franklin

DINING

Blue Hound Barbecue

BBQ crafted from locally sourced meats, produce and wood. Everything is made from scratch and with love!
6712 Highway 441 N
Dillard, GA 30537
Bluehoundbarbecue.com
706-800-8020

**Sunday Diner**

Welcome to Sunday Diner, nestled in the NE Georgia mountains in the small town of Clayton. When you dine at Sunday Diner, we want you to feel like you're a guest in our home.
36 Stave Mill St.
Clayton, GA 30525
706-212-0412
Sundaydinerclayton.com

GOLF COURSE

Sky Valley Country Club

Championship Golf Course open to the public daily year-round with competitive golf rates. Off of Georgia Highway 246, 20 miles from Franklin, NC.
568 Sky Valley Way #1
Sky Valley, GA 30537
706-746-5302
skyvalleycountryclub.com



LODGING

Mountain Aire Cottages, Inn & Glamping

Beautiful and affordable 1 or 2 bedroom Cottages, or individual Motel Rooms, The Stekoa Yurt w/ hot tub & The Tallulah Tipi w/ fire pit. Strictly non-smoking. 2 EV Charging Stations. 12-minute walk to downtown Clayton.

18 Motel Dr. Clayton, GA
706-782-9568
mtnaire12@gmail.com
mountainairecottages.com

Satolah Creek Farm Lodging

Beautiful farm with friendly donkeys, horses and Highland cows, plus fishing and pottery lessons. Luxury cottages and cabins.

2220 Highway 28
Clayton, GA 30525
706-989-9669
SatolahCreekFarm.com/
farm-stays



REAL ESTATE

Sugar Mill Creek at Lake Burton

Sugar Mill Creek at Lake Burton is a private, gated, resort-style community, with 52 park model tiny home sites over the 12 acre property.

4960 Laurel Lodge Rd
Clarkesville, GA 30523
706-920-6309
sugarmillcreek.com



OUTDOOR ACTIVITY

Shady Creek Expeditions

Main Street, Downtown Clayton, GA - Fly Fishing Guide Service & Outfitter, Lifestyle Apparel for Men & Women, Knives & Axes
56 North Main St
Clayton, GA 30525
678-986-5167
shadycreekexpeditions.com

Rolling Thunder River Company

Join the ONE MILLION, and counting, who have experienced the most unforgettable river trips possible. Three river choices, endless memories!

20 Hughes Street
McCaysville, Georgia 30555
rollingthunderriverco.com
(800) 408-7238

WEDDINGS/EVENTS

Satolah Creek Farm Weddings

Dreamy farm weddings with friendly donkeys and Highland cows, beautiful indoor and outdoor venues, on-site guest lodging.
2220 Highway 28
Clayton, GA 30525
706-989-9669
SatolahCreekFarm.com



VISITOR INFORMATION

Rabun County Chamber of Commerce & Welcome Center

706-782-4812
rabunchamber.com



Foxfire Museum & Heritage Center

Nearby Neighbors



NORTH CAROLINA

GENERAL SERVICE

Audubon Marketing

Think of us as your digital compass, guiding your brand to new heights with smart strategy and a creative touch. Ready to make your mark? Audubon's here to lead the way. audubondigitalmarketing.com

Clearway Autism Services

Regional: Clearway Autism Services provides in-home and community-based ABA therapy for children across the Smoky Mountains of Western North Carolina. clearwayautism.com

Duke Energy

Electric utility. To start or stop service, report an outage, or resolve a billing issue, call 800-777-9898. For more information, see duke-energy.com

LODGING

Shoji Spa and Lodge

Accommodations, 26 massage therapists, private outdoor soaking tubs, sauna, minutes to Asheville. Unforgettable mountainside experience. 96 Avondale Heights Rd. Asheville, NC 28803 828-299-0999 Shojiretreats.com

OUTDOOR ACTIVITY

SELF-GUIDED TOUR



Blue Ridge Music Trails

Your guide to traditional music of the North Carolina mountains and foothills. Find concerts, jams, event listings and more at blueridgemusicnc.com

Blue Ridge Craft Trails

Travel the Blue Ridge Craft Trails in NC's mountains and foothills to visit artists in their studios, shop galleries with local artwork, and discover scenic beauty along the way blueridgecrafttrails.com



Appalachian Mural Trail

Tour outdoor historical murals, see outstanding artwork by local artists near the Blue Ridge Parkway. 828-293-2239 • muraltrail.com

VISITOR INFORMATION

Blue Ridge National Heritage Area

Discover the natural and cultural treasures of the NC mountains and foothills. Get inspired and plan your trip at blueridgeheritage.com



Blue Ridge Parkway Association

Print and digital resources for your Parkway journey. Lodging, maps, attractions and more. 828-670-1924 blueridgeparkway.org



DIRECTORY

BRYSON CITY



AGRITOURISM

Darnell Farms	27
Swain County Farmer's Market	27

BLUEWAYS

The Nantahala River	27
---------------------	----

CULTURAL MUSEUMS

Smoky Mountain Train Museum	27
Appalachian Rivers Aquarium	27
Fly Fishing Museum of the Southern Appalachians	27
Swain County Heritage Museum	27

DINING

Big Wesser	27
River's End Restaurant	27
Jack the Dipper Ice Cream	27
Fryemont Inn	27
Pop-N-Jacks Gourmet Popcorn	28
3 Little Bears Retreat	28

GEM MINES & SHOPS

Nantahala River Gem Mining	28
----------------------------	----

LODGING

NOC Bryson City Cabins & Bungalows	28
3 Little Bears Retreat	30
Long View Resort	30
Riverbend Lodging	30
Hemlock Inn	30
Sky Ridge Yurts	30
Stonewood Cabins	30
Lakeview at Fontana	30
Fryemont Inn	33
McKinley Edwards Inn	33
Sleep Inn	33
Nantahala Cabins, Inc.	33
Calhoun House Inn & Suites	34
Great Smokys Cabin Rentals	34
Two Rivers Lodge	34

CAMPGROUND

Brookside Campground & Rafting	34
--------------------------------	----

OUTDOOR ACTIVITY

Great Smoky Mountains Railroad	34
NOC Outdoor Adventure	34
Fly Fishing the Smokies	34
Tuckaseegee Fly Shop	34
Indian Creek Falls	36
Appalachian Trail to Charlie's Bunion	36
Nantahala Byway	36
Deep Creek	36

DIRECTORY

JEEP EXCURSION

Wildwater Nantahala Gorge Adventure Center 36

RAFTING / KAYAKING

Nantahala Outdoor Center 36

Carolina Outfitters Whitewater Rafting 36

Brookside Campground & Rafting 36

Rolling Thunder River Company 36

Wildwater Nantahala Gorge Adventure Center 37

ZIPLINING

Nantahala Outdoor Center 37

Wildwater Nantahala Gorge Adventure Center 37

REAL ESTATE

Good Life Real Estate 37

SHOPPING

NOC Outfitter's Store 37

Wesser General Store 37

Pop-N-Jacks Gourmet Popcorn 37

Uncle Bunky's T-Shirt Shop 37

Heavenly Fudge Depot 37

VISITOR INFORMATION

Swain County Chamber of Commerce 37

Swain County Visitor Center 37

Swain County Tourism Development Authority 37

CHEROKEE



BLUEWAYS

Oconaluftee River 39

CASINO

Harrah's Cherokee Casino and Resort 39

CULTURAL/MUSEUM

Museum of the Cherokee People 39

Oconaluftee Indian Village Living Museum 39

Great Smokys Cannabis Company 39

Mountain Farm Museum 39

DINING

Harrah's Cherokee Casino and Resort 39

SOCO Smokehouse, Gordon Ramsay Food Market,

Ruth's Chris Steak House, Guy Fieri's Cherokee Kitchen + Bar,

Soco Smokehouse, The Coop at Soco Smokehouse, Noodle

Bar, G/R Truffles Pub, Starbucks, Selu Garden Café,

UltraStar Sports Bar & Grill

Heavenly Fudge Depot 40

FAMILY ATTRACTION

Oconaluftee Indian Village	40
Mountainside Theatre	40
Ultra Star Multi-Tainment Center	40

FISHING/HIKING GUIDES

EBCI Fisheries & Wildlife Management	40
Rivers Edge Outfitters	40

GOLF COURSE

Sequoyah National Golf	40
------------------------	----

LODGING

Fairfield Inn and Suites	40
Cherokee Inn	40

CAMPGROUND

Fort Wilderness RV Park	40
Smokemont	42
Entrance to the Blue Ridge Parkway and GSM National Park	42

OUTDOOR ACTIVITY

Bonfire	42
Mingo Falls	42
Soco Falls	42

HORSEBACK RIDING

Smokemont Riding Stables	44
--------------------------	----

SHOPPING

Qualla Arts and Crafts Mutual	44
Bearmeat's Indian Den	44
Traditional Hands Native American Jewelry & Art Gallery	44

DISPENSARY

Great Smoky Cannabis Company	44
------------------------------	----

VISITOR INFORMATION

EBCI Fisheries & Wildlife Management	44
Cherokee Welcome Center	44

FONTANA DAM, ROBBINSVILLE, & LAKE SANTEETLAH

**AGRITOURISM**

Graham County Farmer's Market	49
-------------------------------	----

ARTS/CRAFTS

Stecoah Valley Cultural Arts Center	49
-------------------------------------	----

BLUEWAYS

The Cheoah River	49
Lake Santeetlah	49
Junaluska Memorial	49
TVA Fontana Dam Museum & Visitor's Center	49

DINING

Dam Coffee House	49
------------------	----

Fontana Village Ice Cream Parlor	49
Hazel's Restaurant & Lounge	49
Quill's Canteen	49
Fontana Village Pool Bar and Shop	51
Tapoco Tavern	51

LODGING

Fontana Village Resort & Marina	51
Historic Tapoco Lodge	51
Deals Gap Motorcycle Resort	51
Rivers Edge Treehouse Resort	51
Snowbird Mountain Lodge	51

OUTDOOR ACTIVITY

Fontana Marina Excursions & Boat Rentals	51
Cherohala Skyway	51
The Benton MacKaye Trail	51
Fontana Lake Cruises	53
Nantahala Byway	53
Snowbird (Nantahala National Forest)	53
Cheoah Point (Nantahala National Forest)	53
Horse Cove (Nantahala National Forest)	53
Cheoah & Calderwood Lakes	53
Joyce Kilmer (Nantahala National Forest)	53
Cable Cove (Nantahala National Forest)	53
Sassafras Falls	53
Big Snowbird Trail	53
Tsali (Nantahala National Forest)	53
Rattler Ford Group Campground (Nantahala National Forest)	53
Yellow Creek Falls	53
Joyce Kilmer Memorial Trail	54
Maple Springs Observation Point	54
Waterfall on Tellico River	54
Fontana Village & Tapoco Lodge Trails	54
Fontana Lake	54

SHOPPING

Fontana General Store And Check-in	54
Dam Garage Gas Station & Gift Shop	54
Fontana Dam Overlook Gift Shop	55

VISITOR INFORMATION

Graham County Travel & Tourism	55
Tail of the Dragon	55
Town of Lake Santeetlah Travel Development Authority	55

FRANKLIN & NANTAHALA



AGRITOURISM

Franklin Tailgate Market	57
--------------------------	----

AIRPORT

Macon County Airport	57
----------------------	----

ANTIQUES/THRIFT

Nestfeathers Antiques	57
Whistle Stop Depot	57

ARTS/CRAFTS	
Uptown Gallery	58
BLUEWAYS	
The Little Tennessee River	58
Nantahala Lake	58
BREWERY/WINERY	
Lazy Hiker Brewing Company	58
Slanted Window Tasting Station	58
SenAmore Vineyard & Farms, LLC	58
CULTURE/MUSEUM	
Cowee School Arts & Heritage Center	58
Cowee Viewsite and Trails	58
Macon County Historical Museum	58
Scottish Tartans Museum	58
The Rickman Store	59
Taste of Scotland and Celtic Festival	59
DINING	
Jack the Dipper	59
Asian King Buffet Sushi Bar & Chinese Cuisine	59
Fat Buddies Ribs and BBQ of Franklin	60
Gazebo Creekside Cafe	60
Gracious Plates on Main	60
Lazy Hiker Brewing Company	60
Riverwalk Grille	60
Siam Thai Cuisine	60
Sakura Japanese Restaurant	60
Slanted Window Tasting Station	60
Smokestack Cafe	60
Sunset Restaurant	60
FAMILY ATTRACTION	
Little Tennessee River Greenway	61
Andy's Trout Farm	61
Little Tennessee River Greenway	61
The Factory	61
Tiny Life Homes	61
GEM MINES & GALLERIES	
Artisan Jewelers Gemstone and Mineral Gallery	61
Cherokee Ruby Mine	61
Gold City Gem Mine	62
Ruby City	62
Rose Creek Mine	62
Sheffield Gem Mine	62
GENERAL SERVICE	
Stewart Communications	63
WELLNESS	
St. John's Cartoogechaye Episcopal Church	63
LODGING	
Andy's Trout Farm	63
A Sapphire Inn	63
ATbnb	63
Big Bear Cabin Rentals	63
Colonial Inn Franklin	63
Quality Inn	63
Stay Out Yonder	63

Wayah Ridge Escapes	63
CAMPGROUND	
Andy's Trout Farm	64
Cowee Campground	64
Cullasaja River RV Park	64
Mi Mountain Campground	64
Old Corundum Millsite Campground	64
Pines RV Park and Cabins	64
Rose Creek Campground & Cabins	64
Highlands Riverbend RV Resort and Cabins	64
Whistle Stop Depot	64
OUTDOOR ACTIVITY	
Fish Tales Outfitters & Guide Service	64
Primitive Outback Kayaking & Gem Mining	64
Cowee View Interpretive Site	65
Little Tennessee River Greenway	65
Gibson Bottoms	65
Pickin' on the Square Saturday Nights	65
Wayah Bald (Nantahala National Forest)	65
Nantahala Gorge (Nantahala National Forest)	65
Queen Branch	65
Standing Indian (Nantahala National Forest)	65
Tessentee Bottomland Preserve	66
Big Laurel Falls and Mooney Falls	66
Hurricane Primitive (Nantahala National Forest)	66
QUILTING	
A Stitch In Time	66
REAL ESTATE	
Sanctuary Village	66
Tiny Life Homes	66
RE/MAX Elite Realty	66
SHOPPING	
Appalachian Growers	66
Bryants Antique Mall	66
Trail Mix	66
Friends of the Macon County Public Library	66
Limberlost Pottery Studio and Gallery	67
Mossy Rock WNC	67
Yonder	67
Ruby City	67
THEATER	
Smoky Mountain Center for the Performing Arts	67
WELLNESS	
Appalachian Growers	67
Yoga Den	67
VISITOR INFORMATION	
Franklin Chamber of Commerce	68
Franklin/Nantahala Tourism Development Committee	68
Franklin Tourism Development Authority	68
Smoky Mountain Host Visitor Center	68

HAYESVILLE & BRASSTOWN



ARTS/CRAFTS

John C. Campbell Folk School 73

CULTURAL/MUSEUM

Clay County Historical & Arts Museum 73

Historic Hayesville 73

DINING

The Firefly Café 73

The Copper Door 73

EVENT/WEDDING

Clay County Courthouse / Beal Center 73

LODGING

Deerfield Inn 73

Hinton Rural Life Center 74

The Enchanted Forest 74

CAMPGROUND

Sundowner RV Village 74

SHOPPING

Tiger's Store & Chinquapins Soda Bar 74

The Lavender Crow Apothecary & Tea Shoppe 74

Lazy Llama 74

Papaw's Harvest 74

OUTDOOR ACTIVITIES

The Hayesville Bike Shop 74

Waterfall Byway 74

Jackrabbit Mountain Trail 74

Nantahala National Forest 74

Lake Chatuge 74

Fires Creek Area Trails 75

Leatherwood Falls 75

Quannassee Path 75

DISPENSARY

Bauer Brand Cannabis 75

THEATER

Peacock Performing Arts Center 75

VISITOR INFORMATION

Clay County Chamber of Commerce 75

Clay County Communities Revitalization Association 75

HIGHLANDS, CASHIERS, GLENVILLE, SAPPHIRE & SCALY MOUNTAIN



BLUEWAYS

Lake Glenville 77

CULTURAL/MUSEUM

Highlands Museum & Historical Village 77

Cashiers Historical Society 77

DINING

Blue Hound Barbecue 77

GEM MINES & SHOPS

Jackson Hole Trading Post 77

LODGING

Hotel Cashiers	77
----------------	----

OUTDOOR ACTIVITY

Highlands Outpost	77
Highlands Aerial Park	77
Lake Glenville Scenic Waterfall Cruises	77
Waterfall Byway	78
Whiteside Mountain (Nantahala National Forest)	78
Bridal Veil Falls	78
Cullasaja Falls	78
Dry Falls	78
Whitewater Falls	78
Panthertown Valley	78
Whiteside Mountain Trail	78

THEATER

Mountain Theatre Company	78
--------------------------	----

VISITOR INFORMATION

Cashiers Area Chamber of Commerce	78
Highlands Chamber of Commerce & Visitor Center	78

ANNUAL EVENT

Highlands Motoring Festival	78
-----------------------------	----

MURPHY & ANDREWS**AGRITOURISM**

Visit NC Farms	81
The Murphy Farmer's Market	81

ARTS/CRAFTS

John C. Campbell Folk School	81
Olive's Porch	81
Cherokee County Arts Council	81

BREWERY/WINERY

Buck Bald Brewing	81
FernCrest Winery	81
Hoppy Trout Brewing Company	81
Valley River Vineyards	81

CASINO

Harrah's Cherokee Valley River Casino & Hotel	82
---	----

CULTURAL/MUSEUM

Andrews Art Museum	82
Cherokee County Historical Museum	82

DINING

Harrah's Cherokee Valley River Casino & Hotel	82
Hanging Dog General Store & Cafe	82
Morning Fog Coffee and Eats	82

EVENT/WEDDING

Hawkesdene	82
McGuires Millrace Farm	82

FAMILY ATTRACTION

Andrews Valley Rail Tours	82
Ultra Star Multi-Tainment Center	82

LODGING

Quality Inn 83

CAMPGROUND

The Holler 83

Persimmon Creek RV Park 83

OUTDOOR ACTIVITY

The Benton MacKaye Trail 83

Welch Farm River Access 83

Mountains-to-Sea Road Bike Route 83

TransAmerica Trail 83

Piney Knob Bike Trails 83

Murphy River Walk and Canoe Trail 83

Cherokee Lake Trail (Nantahala National Forest) 84

REAL ESTATE

Carolina Mountain Homes 84

WELLNESS

Graciela Laurent Photography 84

VISITOR INFORMATION

Murphy Visitor Center and Andrews Rest Area 84

Andrews Chamber & Welcome Center 84

Cherokee County Chamber of Commerce and Welcome Center 84

NC Rest Area 84

SYLVA, DILLSBORO, BALSAM & CULLOWHEE**AGRITOURISM**

Highland Hills Farm 87

Jackson County Farmer's Market 87

ARTS/CRAFTS

Dogwood Crafters 87

BLUEWAYS

Tuckasegee River 87

CULTURAL/MUSEUM

American Museum of the House Cat 87

Mountain Heritage Center 87

DINING

Jack the Dipper Ice Cream 87

Balsam Falls Brewing Co 87

Blue Ridge Bootleg 87

Creekside Oyster House and Grill 87

Lulu's on Main 87

BREWERY/WINERY

Innovation Brewing 88

Innovation Station 88

Rivers & Rails Tavern 88

EVENT/WEDDING

The Applegate 88

High Country Travel & Catering 88

Baxley's Chocolates 90

FAMILY ATTRACTION

American Museum of the House Cat 90

LODGING

Best Western Plus River Escape Inn & Suites	90
Holiday Inn Express & Suites Sylva-Western Carolina Area	90
Clarion Pointe Sylva Near Cherokee Area	90
Comfort Inn	90
Outland Chalet & Suites	90

CAMPGROUND

Moonshine Creek Campground	90
----------------------------	----

OUTDOOR ACTIVITY

Tuckasegee Fly Shop	90
Appalachian Mural Trail	91

OUTDOOR EVENTS

Concerts on the Creek	91
-----------------------	----

RAFTING/KAYAKING

Smoky Mountain River Adventures	91
---------------------------------	----

REAL ESTATE

Western Carolina Properties – Dillsboro	91
---	----

SHOPPING

Baxley's Chocolates	91
Lazy Bear General Store	91
The Mountain Laurel Shop	91

THEATER

WCU John W. Bardo Fine & Performing Arts Center	91
---	----

GENERAL SERVICES

BalsamWest FiberNET	91
828 Custom Printing	94

EVENTS

Comicon Corp. Of America	94
--------------------------	----

VISITOR INFORMATION

Jackson County Chamber & Visitor Center	94
Jackson County TDA	94
Town of Dillsboro	94
Dillsboro Merchants Association	94

WAYNESVILLE, MAGGIE VALLEY & CANTON



AGRITOURISM

Boyd Mountain Christmas Tree Farm	97
Buffalo Creek Vacations	97
Haywood's Historic Farmer's Market	97
Waynesville Tailgate Market	97

BREWERY/WINERY

The Scotsman Public House	97
B&C Winery	97

CULTURAL/MUSEUM

Canton Area Historical Museum	98
Museum of North Carolina Handicrafts at the Shelton House	98
Wheels Through Time Museum	98

DINING

The Scotsman Public House	98
Jack the Dipper Ice Cream	98
Crown & Thistle Tea Room	98
Cataloochee Ranch	98

Fat Buddies Ribs and BBQ of Waynesville	98
LODGING	
The Valley Inn	100
Andon-Reid Inn	100
Boyd Mountain Log Cabins	100
Best Western Smoky Mountain Inn	100
Buffalo Creek Vacations	100
Cataloochee Ranch	100
Country Cabins	100
Lake Junaluska	100
Oak Park Inn	100
Premier Vacation Rentals	100
The Swag	101
SHOPPING	
The Axe Tavern	101
OUTDOOR ACTIVITY	
Buffalo Creek Vacations	101
Cataloochee Ranch	101
Scenic Tours and Adventures	101
Soco Crafts & Tower	101
Tuckaseegee Fly Shop	101
Sunburst (Pisgah National Forest)	101
Sunburst Falls	101
Cataloochee	101
Mouse Creek Falls	101
Mountains-to-Sea Trail	102
SHOPPING	
Cabbage Rose	102
Mast General Store	102
Pinnacle Farms	102
Waynesville Soda Jerks	102
Maggie Mountaineer Crafts	102
WELLNESS	
Sundarah Wellness	102
VISITOR INFORMATION	
Town of Maggie Valley	102
Haywood Chamber of Commerce	102
Haywood County Tourism Development Authority	102
Maggie Valley Chamber of Commerce	102

RABUN COUNTY, GA



FAMILY ATTRACTION	
Hillside Orchard Farms, Inc.	105
CULTURAL/MUSEUMS	
Satolah Creek Farm Studios	105
Foxfire Museum & Heritage Center	105
DINING	
Blue Hound Barbecue	105
Sunday Diner	105
GOLF COURSE	
Sky Valley Country Club	105
LODGING	
Mountain Aire Cottages, Inn & Glamping	106

Satolah Creek Farm Lodging	106
REAL ESTATE	
Sugar Mill Creek at Lake Burton	106
OUTDOOR ACTIVITY	
Shady Creek Expeditions	106
Rolling Thunder River Company	106
WEDDINGS/EVENTS	
Satolah Creek Farm Weddings	106
VISITOR INFORMATION	
Rabun County Chamber of Commerce & Welcome Center	106

NEARBY NEIGHBORS



GENERAL SERVICE	
Audubon Marketing	107
Clearway Autism Services	107
Duke Energy	107
LODGING	
Shoji Spa and Lodge	107
OUTDOOR ACTIVITY	
Blue Ridge Music Trails	107
Blue Ridge Craft Trails	107
Appalachian Mural Trail	107
VISITOR INFORMATION	
Blue Ridge National Heritage Area	107
Blue Ridge Parkway Association	107

Photo by Eric Haggart Imagery










PLAN YOUR GREAT SMOKY MOUNTAINS OF NORTH CAROLINA ESCAPE

Brochures | Gifts & Souvenirs | Beautiful Grounds & Facility | NC DOT | Friendly Staff | Tips on Staying, Playing, Dining | Coffee & Snacks | Free Wi-Fi

4437 Georgia Rd, Franklin, NC 28734
828.369.9606 | VisitSmokies.org

EXPLORE THE *Great*

-  Nantahala National Forest Recreational Areas
-  Great Smoky Mountains National Park Recreational Areas
-  Waterfalls
-  Blueways
-  NC Scenic Byway



Great Smoky Mountains of North Carolina



22

CHASING
WATERFALLS



26

BRYSON CITY
Swain County



38

CHEROKEE
Qualla Boundary



48

FONTANA DAM,
ROBBINSVILLE, AND
LAKE SANTEETLAH
Graham County



56

FRANKLIN AND
NANTAHALA
Macon County



72

HAYESVILLE AND
BRASSTOWN
Clay County



76

HIGHLANDS, CASHIERS,
GLENVILLE, SAPPHIRE
AND SCALY MOUNTAIN
Jackson County



80

MURPHY AND
ANDREWS
Cherokee County



86

SYLVA, DILLSBORO,
BALSAM AND
CULLOWHEE
Jackson County



96

WAYNESVILLE, MAGGIE
VALLEY AND CANTON
Haywood County



104

DILLARD AND CLAYTON
Rabun County



107

NEARBY
NEIGHBORS







4437 Georgia Road • Franklin, NC 28734

828-369-9606 • VisitSmokies.org