

WICKED Aging

2025 YEAR IN REVIEW

At Spectrum Generations, we work strategically to serve a community where adults with disabilities and older adults are valued, engaged, and living with dignity. It is our honor to do this work. We are pleased to share the following achievements for FY25. (Services were delivered between 10/1/24 – 9/30/25)

Impact Across Maine

Spectrum Generations supported **over 10,000 people**—our friends, family members, and neighbors throughout central and Midcoast Maine. Our programs and services have an immediate, positive impact on the lives of these community members, and we are proud to support them to age gracefully in the communities of their choice.

Nutrition Services

An impressive **321,305 Meals on Wheels** meals were prepared and delivered to **2,069 people**. These nutritionally balanced meals, expertly created by our chefs, are delivered by incredible teams of generous, committed volunteers.

AniMeals Program

Our AniMeals program began over a decade ago when we learned that some Meals on Wheels recipients did not have enough money to feed their pets and shared home delivered meals with their furry companions. **373 companion animals** received **19,471 baggies** of pet food as part of their owners' regular Meals on Wheels deliveries. Pet food donations and monetary gifts are accepted as part of this program.

Social Dining and Nutrition Education

1,790 people attended social dining at our Cohen Community Center (Hallowell) and Muskie Community Center (Waterville) and **35,869 meals** were prepared and served. Both thriving community centers have been undergoing updates this year, including the Muskie Center's Atlas Room (read more about this inside). In addition, people also received nutrition counseling and education services. **1,131 people** received **8,965 USDA Supplemental Food Boxes** distributed through our community centers to further combat food insecurity.

Volunteer Contributions

We love our volunteers. . . Nutrition program volunteers are critical to our success and service delivery! In FY 25, **304 volunteers** contributed **33,220 hours** including **246 volunteers** that supported our nutrition programs in a variety of ways, including, cleaning, serving food, kitchen support, & packing and delivering meals. The monetary value of these services, if they were paid, is **\$1,014,880!** In addition, **volunteers** taught classes, worked at reception desks in our centers, served on the Board of Directors or the Advisory Council, helped with fundraising events, worked with our Aging & Disability Resource

Center team providing community health services and other important volunteer roles.

We could not do our work without you!

Caregiver Support and Access Services

We provided **227 people and their families** with caregiver support services such as respite, education, training, and counseling. Our Spectrum Generations staff are trained and value the importance of educating caregivers in what can be a difficult role, in addition to the importance of self-care.

4,279 people utilized our access services, which include case management, information and assistance, outreach, and public education.

Home and Community Services

Bridges Home & Community Services (BHCS) provided **94,080 hours** of invaluable personal support, including assistance with daily tasks, gentle guidance, transportation, bed-bound care, and overnight support.

BHCS also delivered **44,360 hours** of specialized programming through two distinct service areas. **Adult Day Care Services**, a longstanding program, supported adults living with memory-related diagnoses through structured, engaging care at our community

- 1 Agency Summary for FY2025
- 2 Letter from the CEO
- 3 Emergency Nutrition Assistance Program
- 4 Annual Report
- 5 FY2025 Donors
- 8 Meet Caregiver John Newby
- 9 The Atlas Room Launch
- 10 Chore & Ramping Up Repairs
- 11 Ice Fishing Derby 2026

centers. Community Support Services assisted individuals with intellectual and/or developmental disabilities in building independence and achieving personal goals at our community centers, in the broader community, and in participants' homes.

In addition, BHCS provided **11,310 hours** of targeted case management services for adults with intellectual disabilities. Through this work, case managers partnered closely with individuals and families to coordinate care, connect them with essential resources, and support overall well-being. In total, **331 individuals** were supported through these case management services.

Healthy Living for ME

HL4ME offered **113 workshops** which included **87 in-person** and **26 remote** classes in addition to **35 mailed-home** "toolkits." Through the network, a total of **1,722 people** participated in classes such as, *A Matter of Balance*, *EnhanceFitness*, *Living Well for Better Health*, *Tai Chi for Health and Balance*, and many other opportunities to support positive health outcomes.

A Message of Thanks

Thank you for your trust in Spectrum Generations to provide the community care you need!



OUR MISSION:
to promote and advance the well-being and independence of older and disabled adults, with the support of their care partners, to live in their community of choice.

BOARD OF DIRECTORS FY25

Officers

- Karen Foxwell, Chair
- Rick Ness, Vice Chair
- Diane Morrison, Secretary
- Terry Reddy, Advisory Council Chair

Members

- Linda Ball
- Peter Bedard
- Allen Cairns
- Anne Conners
- Pam Frace
- Carey Paradis

COMMUNITY CENTERS:

Cohen Community Center

22 Town Farm Road
Hallowell

Muskie Community Center

38 Gold Street
Waterville

Waldo Community Center

18 Merriam Road
Belfast

AGING AND DISABILITY RESOURCE CENTER:

Midcoast Regional Center

(co-located with People Plus)
35 Union Street
Brunswick



Letter from the CEO

Holding the Line — Together

Across Maine, we are living through a moment of careful balance. Demand for services that help older and disabled adults remain healthy, housed, nourished, and connected continues to rise—while public resources remain constrained. This reality shaped much of the conversation this legislative session, including the future of statewide funding for Maine’s Area Agencies on Aging.

Many of you have followed our work to advance LD 814, the Older Mainers Act—a long-term effort to modernize and stabilize funding for the community-based services older adults and caregivers rely on every day. While the bill itself passed, full funding was not included in the Governor’s budget and was not advanced through the traditional appropriations process. Instead, the Appropriations and Financial Affairs Committee once again chose a familiar path: providing \$3 million in one-time funding, pending final legislative approval (at the time of this newsletter – early April), to maintain the status quo.

There is good news in this outcome.

There will be no immediate cuts to long-standing services like Meals on Wheels. Emerging programs—such as Ramping Up Repairs, which helps older adults make critical home modifications, and Respite for ME, which supports family caregivers, will continue, even if still in their early, fragile stages. These programs matter deeply to the people they serve, and continuity matters.

At the same time, we want to be clear and honest with our community: this is not a total win. Without the full \$9.75 million envisioned under the Older Mainers Act, waitlists will remain for Meals on Wheels, case management, and caregiver services. Needs will continue to outpace available resources. For many Mainers, help will still

come later than it should—or possibly, not at all.

In fiscally constrained times, this may be a purposeful compromise. But for the older adults, caregivers, and families navigating aging and disability every day, it is a reminder that the work is far from finished.

What has not changed is Spectrum Generations’ commitment to you.

We remain steady in service delivery. We continue to look critically at how we operate—seeking efficiencies, strengthening partnerships, and adapting programs to meet people where they are. And we will keep showing up: in homes, in communities, and at the State House, advocating for systems that honor dignity, independence, and choice.

This is also a moment where community generosity matters more than ever. Philanthropic support helps us fill gaps that public funding does not—and your voices help decisionmakers understand what is at stake. Whether through giving, volunteering, or advocacy, you are part of what makes these services possible today.

We will be back next year, reintroducing the Older Mainers Act and continuing the push for full, permanent funding that reflects Maine’s demographic reality and our shared values. With the community beside us, we believe we can move from holding the line to building a stronger future—for all of us as we age.

Thank you for standing with Spectrum Generations. We are here, and we will keep at it.

With gratitude,

GERARD QUEALLY
President & CEO
Spectrum Generations

STEPPING UP!

Emergency Nutrition Assistance Program



Last November, Governor Janet Mills allocated \$1.25 million to Maine’s Area Agencies on Aging, Good Shepherd Food Bank, and other anti-hunger initiatives across Maine during the Federal government shutdown that disrupted the distribution of Supplemental Nutrition Assistance Program (SNAP) benefits. This effort was undertaken in partnership with the John T. Gorman Foundation.

As Central Maine’s Area Agency on Aging, Spectrum Generations received \$149,077 to provide meals to eligible SNAP recipients. Eligibility requirements stipulated that meal recipients be currently enrolled in SNAP, be 60 or older (91% of the people served), or 18 and above with a disability (9% of the people served).

With this funding, **Spectrum Generations delivered 12,429 emergency meals over a three-month period to 460 people through various distribution methods and collaborative partnerships.**

This included serving 67% of people living alone and 93% of people living in locations considered to be rural; while 8% struggle with six or more Activities of Daily Living (ADLs) such as bathing, dressing and navigating their homes; another 8% of the people served struggle with eight or more Instrumental Activities of Daily Living (IADLS) to include preparing their own meals, managing medications, personal financial management and their

personal shopping needs, etc. In addition, 23 of the people served were American Veterans.

Three percent of the people served were previously on the Meals on Wheels waitlist. However, with the exhaustion of these funds, these individuals will remain on the Meals on Wheels’ waitlist, along with over 300 others, until the program acquires additional money to serve them.

“We appreciate the funding and are proud that Spectrum Generations with its partners, were able to quickly and efficiently produce these 12,429 emergency meals in such a short amount of time! It is a commendable effort from our team, and I am very proud of how well they worked together on this project,” said Tyra Parker, Vice President of Aging and Disability Services.

Lindsay MacDonald, Vice President of Community Engagement, added, “More funding is critically needed to ensure all older and disabled adults – not only those receiving SNAP benefits- can access healthy, nutritious food. An incredible barrier is obtaining and maintaining the necessary funding levels to match the growing demand for Meals on Wheels.”

Currently Spectrum Generations has over 300 people waiting to receive meals. If you would like to help the Meals on Wheels program, visit:

www.SpectrumGenerations.org

and please advocate for this need to your state representatives. ■

Volunteer of the Year

SCOTT “SCOTTY” VANDERVEER



Scotty Vanderveer is a dedicated volunteer who contributes his time each week at the Muskie Community Center. Volunteering every day except Wednesdays, Scotty typically serves 6-8 hours per day.

His commitment and work ethic is so strong that many congregate diners assumed he is a staff member.

Working in the kitchen as a dishwasher, and also assisting with the Meals on Wheels program packing meals, Scotty is a shining example of volunteerism — someone who truly loves what he does and values the people he works alongside.

He arrives at the Center with the support of his guardians or by using the Kennebec Valley Community Action Program van service. This year marks Scotty’s 30-year anniversary of volunteering with us, making

him the longest-serving volunteer in the agency’s history.

In addition to his service, Scotty is also a Meals on Wheels recipient, as he does not drive and is homebound. Having a support system that helps him get to and from “work” provides him with meaningful social interaction and an opportunity to stay engaged with his community.

Thank you Scotty, for all that you do! ■



A Message from Sharon Cleveland, Chief Financial Officer

“Every action, every service provided, and every dollar creates ripples that move our mission forward.”

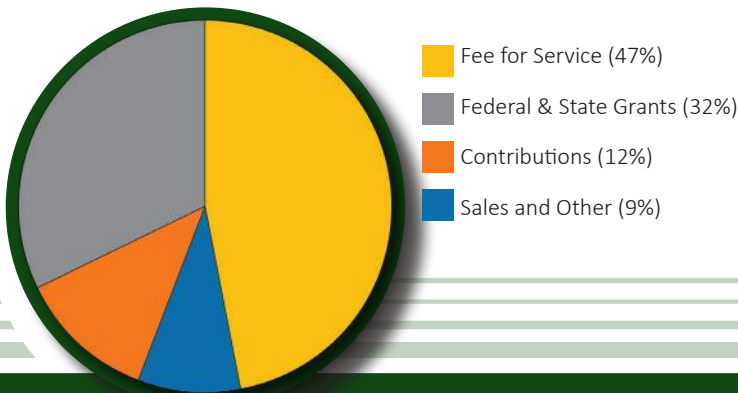
Spectrum Generations’ success is built on connection. Each act of service delivered, each hour volunteered, and each decision made creates a ripple — strengthening our organization and extending outward into the communities we serve. No single effort stands alone; it truly takes all of us working together to advance our mission.

Without the generous donations and financial support we receive from individuals, partners, and businesses throughout the year, we would be unable to meet the growing need of the individuals we serve. Additionally, our dedicated volunteers recorded over 33,000

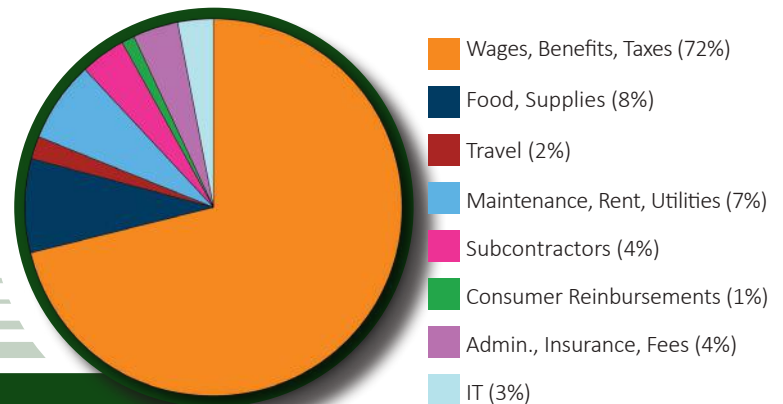
hours of service valued at \$1,014,880, an expense we would have otherwise needed to allocate to service delivery. What an amazing reflection of our connected and caring community. Our financial results represent more than dollars and percentages — they reflect people, purpose, and collective impact. By recognizing how individual actions connect to broader outcomes, we reinforce our ability to respond to change, support one another, and serve our communities with dignity and care.

SHARON L. CLEVELAND
Chief Financial Officer & Treasurer,
Board of Directors,
Vice President of Administration

FY25 FUNDING SOURCES



FY25 EXPENSES



Lindsay MacDonald, V.P. of Community Engagement



I want to personally extend my heartfelt gratitude for your generous support, whether through private gifts, contributions from the many municipalities we serve, special events, annual appeals, United Way campaigns, bequests, memorial donations, or foundation grants. These critical development funds are truly essential, making up 12% of our total income in FY25 and helping us sustain agency services. Your commitment empowers our operations team to deliver vital services and programs to our community. Thank you for your unwavering partnership and belief in our mission. It means the world to me as Vice President of Community Engagement, and in fact, we could not do this important work without YOU!

Thank You **FY2025** Donors!

October 1, 2024 - September 30, 2025

LEGACY MEMBERS **\$10,000 +**

Hannaford*
Heart of Maine United Way
John T. Gorman Foundation
Karen Foxwell
Lewis J. Sheaffer Community Foundation
Maine Credit Union League, Campaign for Ending Hunger
Maine Health Access Foundation (MeHAF)
Roger and Carmen Bedard
United Way of Kennebec Valley
United Way of Mid Coast Maine
Winslow Community Cupboard Food Pantry*

ADVOCATES **\$5,000 - \$9,999**

Anonymous
Central Maine Power Company - Augusta
FEMA
Maine Community Foundation
Maine State Credit Union

LEADERS **\$1,000 - \$4,999**

Allen Cairns*
Anonymous
Bangor Savings Bank
Bangor Savings Bank*
Belton New England
Bracy Memorial Trust Fund
Bryce Knowlton Edwards*
Camden Hills Partners, LLC
Central Maine Motors, Inc.*
Charlie's Motor Mall
Connected Credit Union
Damariscotta-Newcastle Rotary Club

David Derosby
David Libby*
Diana McKenzie
Doug and Rita Sukeforth
Elizabeth A. Grimard*
Gardiner Federal Credit Union
Gerard and Caroline Queally
Greater Augusta AARP Chapter 511
Gregory and Dorothy Piper*
Hamlin's Marine
Hammond Lumber Co.*
HUB International New England, LLC
James and Alison Nichols
Joan Stansfield
John and Cynthia Thompson
John and Pamela Blamey
Karen E. Haney*
Karen Foxwell*
Karen Wiswell
Kramer's Inc.*
Kristie E. Dodge
Linden and Heather Frederick*
Lorraine Aube
LPL Financial
Maine Forest Yurts*
Mainely Handrails*
Mary Merrill
Monmouth Masonic Lodge 110
Morgan Stanley Gift Fund
Nancy & Debbie L. Dodge Revocable Trust
Norman Pomerleau
North Country Rivers, Inc.*
NRF Distributors
Richard Thompson*
Riley Insurance
Robin B. Glassman*

Sandra Arbour
Stantec Consulting Services, Inc
Sukeforth Charitable Foundation
TRICORP Federal Credit Union
Waterville Food Bank*
Waterville Masonic Lodge #33
Wendy A. Shaw*
Wild Oats Bakery & Cafe*
William J. Vaughan Jr.*

SUSTAINERS **\$500 - \$999**

Anonymous*
Anne M. Putnam*
Carey Paradis
Central Maine Motors, Inc.
Christine Lajoie-Cameron*
Damariscotta-Newcastle Lions Club
Donna Drake
Elizabeth Martin
Gary Goodrich
Hammond Lumber Co.
Hampton Inn Waterville*
Hannaford: Fight Hunger Bag Program
Herbert Everett
Huhtamaki*
Jacqueline M. Stedman
Janet Maliga*
Jim Kilbride*
John E. Morris*
Josephine M. Andreassen
Kennebec Behavioral Health
Kennebec Savings Bank
Kenneth Rossignol*
Lawrence Duquette
Magnolia Tall Pines
Mainely Trusses- Hancock Lumber*
Michael C. Shannon

Michael Montgomery*
Nale Law Office, LLC
Performance Foodservice-Northcenter
People Plus
Peter Snell
Renee Adams
Richard Higgins Sr.
Rotary Club of Augusta
Sam Whiting
Sidney Farr
Silver Street Tavern*
Stanley's Septic Tank Service and Construction Company
Tony Noonan
Waterfront Concerts*

SUPPORTERS **\$0 - \$499**

201 Tire Battery & Service*
Advance 1 Cleaning Services, Inc.
Adele Gasset
Alan Claude Gallery*
Al and Florence Bergeron
Allen Cairns
Andre R. Drolet
Andrew Cohen
Andrew Dunbar
Anonymous
Anne Conners and Austin Donaghy
Anne E. Burrill
Arnold G. Thibodeau
Atlantic Federal Credit Union
Augusta Emblem Club #233
Austin Bedsaul
Barbara Buzzell
Bartley and Katherine Calder
Beckett Furybash
Berry & Berry Floral*
Best Life Nutrition*
Betsy E. Mace
Betsy L. Burpee

Bill Vanghan*
 Bradley Varney
 Brenda Goodrich
 Brian and Celeste Perkins
 Bryce Knowlton Edwards
 C. Hennessey
 C.O. Beck & Sons
 Carl and Sylvia Swanson
 Carol A. Demo
 Cathy Pierce
 Cecil Burnham
 Cecile Vigue
 Cecile Vigue*
 Charles Nielsen*
 Charlotte Cole*
 Cheryl Dubois
 Cheryl Dubois*
 Chester, Jr. and Deena Day
 Choral Maxwell
 Chris Brown
 Chris Stanley*
 Clarence and Bethany Struck
 Clyde and Catherine Williams
 Colburn Shoe Store*
 Conrad and Nancy Schilke
 Constance Beckim
 Constance Chase-Wells
 Cushnoc Senior Citizens Club
 Cynthia and Leon Harkleroad
 Dale Michaud*
 Dan Doyon
 Daniel Davis
 Daniel Doiron
 Daniel Michaud
 Daniel and Kathleen Petersen
 Darlene T. Graves
 Darling's
 David and Donna Crockett
 David W. Billheimer
 Dawn M. Castner
 Debra Jenney*
 Delbert and H. Jenelle Matheson
 Dennis Stedford
 Derek Furbush
 Diane Keefer
 Diane Morrison
 Dominique B. Douin
 Donald G. Gilbert
 Donald Smith
 Donald and Barbara Russell
 Donald and Louise Marchildon
 Donna Brann Lind
 Donna Watson
 Dorothy Chapman
 Duane H. Ferrante
 Eben Lovejoy*
 Eleanor Everson
 Elizabeth-Ellen and John Clark
 Elizabeth J. Poulin
 Elizabeth Manning
 Emily K. Willett
 Ellen Currier
 Erik Le
 Erline R. Dube
 Evelyn Smith
 Fish Tails Pet Emporium*
 Florence Dasrath
 Florence K. Carter
 Frank Ford
 Fred Letourneau
 Front Street Shipyard
 Frontstream SPV LLC
 Friendly Ties Quilt Group*
 G & E Roofing Company, Inc.
 Garet Bottger
 Gary and Judy Hurtubise
 Gary and Rosie Bensen
 Gary Winchenbach
 Generators of Maine, INC.
 George and Suzanne Beyea
 Gerald Castonguay*
 Geri Herbster*
 GFWC Semper Fidelis Club
 Glenice Skelton and Hank Aho
 Governor's Restaurant & Bakery*
 Gregory A. Kellner
 Gregory A. Kellner*
 Harry Bonish
 Harry Bonish*
 Harry S Grindall*
 Helen Gallagher
 Helen Parnell
 Helen Parnell*
 Herbert and Lee Brock
 Holy Cannoli*
 Horace J. Fortier Jr.
 Isaac Sparks
 IV Hydralounge*
 J. Alfred Letourneau
 Jacob Freudberg
 James McManus
 James P. Nickles
 James and Cecilia Cumming
 James and Geraldine Gurney
 James and Jill Labbe
 James and Judith Marine
 Janet A Molboski
 Janet Babb
 Janet Babb*
 Jean A. Bryant
 Jean B. Cole
 Jeanne L. Codere
 Jed and Francina Davis
 Jenn Brown
 Jennifer Bickford
 Jennifer King
 Jim and Susan Moorhead
 Jo Nickerson
 Jo-Anne Moore
 Joan Breton
 Joan Cwierniewicz
 Joan Gosselin
 John H. Willey
 John Parkin Jr.
 John W Benoit
 John and Barbara Allan
 John and Judith Bauman
 John and Marsha Potter
 Jonathan S. Hartill
 Josee Cloutier
 Josée L. Shelley
 Joseph C. Laun
 Joseph R. Query
 Josephine Wood
 Joyce Decker
 Joyce L. Morse
 Joyce M. Joseph
 Joyce M. Joseph*
 Joyce Smith
 Judy Craig
 Jules Cloutier and Susan Thompson-Cloutier
 Kaila Gutierrez*
 Karen C. Marsh
 Karen L. Hoffman
 Karen Marsh
 Karen Noyes-Moody
 Karen Noyes-Moody*
 Karen Wiswell*
 Kathleen Stowers
 Katie Carlson*
 Katie Magoun
 Kayla Collins
 Keith L. Lumbert
 Kennebec Valley Federal Credit Union
 Kent M. Long
 Kevin Joseph*
 Kevin P. Joseph
 Kevin P. Joseph*
 Kieran Kammerer*
 Korner Store
 Korner Store*
 Kristine Arntsen
 L.L. Bean*
 Lalonnie Rines
 Larry E. Ogden
 Larry and Rachel Wentworth
 Laura Stubbs
 Lauralee Poutree
 Laurence Holmes
 Lauretta and James Grady
 Leon Wiswell
 Lincoln County Theater*
 Lincoln Elementary School
 Linda Achorn
 Linda B. Stevens
 Linda Roderick*
 Lindsay MacDonald
 Linnea K. Johnson



Lionel and Virginia Howard	Monkitree*	Robin L. Turek	The UPS Store
Lisa Joseph*	Muriel Blanchette	Rochelle Roelofs	The University of Michigan
Lisa's Legit Burritos*	Nancy Bell	Rolande Colfer	Thomas and Gloria Bedard
Lois Doran	Nancy Horkavy	Rollande Giguere	Thomas and Jackie Manning
Lois Gilbert	Nale Law Office, LLC*	Ronald E. Morgan	Tina Varney
Lolita Day*	Nathalie C Haggan	Roy R. Bischoff	Tracey L. Horton
Lorraine Quirion	Nicholas Derosé	Rudi Smith	Tracey L. Horton*
Lori Drew*	Norma Julia	Russell Stickle	Tree Spirits of Maine*
Stanley and Hattie Luce	Norma Piper	Ruth Chick	Trevor McKenney
Lynda Quinn	Norman and Diane Bailey	Sandra Corcoran	United Way of Kennebec Valley*
Marcel G. Larue	Norman and Trudy Hart	Sandra Corcoran*	Universalist-Unitarian Church
Margaret McGuire	Northeast Laboratory Services	Sandra and Larry MacDonald	Vignettes of Maine*
Margaret Pratt	Oliver & Friends Bookshop*	Sara Lozefski	Victoria Bedard
Margaret Smith	Otto's on the River	Sara Lozefski*	Vivian A. Morissette
Marilyn M. Hall	Otto's on the River*	Selah Tea Cafe	Vivian M. Flamm
Mary Katherine Baker	Pam Hess	Selene's Fly Shop*	Wallace Rose
Mary L. Dunlap	Patricia Reno	Shauna Stuber*	Walter and Barbara McCarty
Mary Lou Vigue	Patricia Rusk	Sharon Cleveland	Walter and Barbara Zaccadelli
Mary Patterson	Patricia Vashon	Sharon Lee	Wander Pizza Co.*
Mary and Chris Kaminsky	Paul Emerson	Shaw's Supermarket*	Warren and Marlene Spaulding
Matthew Hunt	Paul Jacques	Sheila Rodrigue	Waterville Creates*
Matthew and Jessica Simonds	Paul Lachance	Sheri Meucci	Waterville Family Practice
Maurice Philippon	Paul and Daria Forman	Shirley Littlefield*	Waterville Stamp Club
Maurice and Patricia Pelletier	Peggy Oben	Sidney and Julie Dupont	Wellman E. Cromwell
Maurice and Shirley Ladd	Performance Foodservice-Northcenter*	Skillins Greenhouses*	Wilfred H. Baxter
McNally Busing, LLC	Peter Cook	Sonia M. St. Pierre	William R. Stokes
Mearl Salley*	Peter Larkin	Sprague & Curtis Real Estate	William and Elizabeth Burgess
Melanie Davis	Peter Leon Doyon	Standard Waterproofing Inc.	William and Frances Weatherbie
Melissa Mercier	Pike Industries, Inc.	Stephen C. Garde	Wrapped Up Coffee House & Kitchen*
Melysa Cassidy	Pink Crow Collective*	Stephen C. Garde*	Zimba Company Inc.
Michael Cosgrove	Priscilla Costello	Susan Carlson	
Michael G. Byron	Priscilla Costello	Susan LaPlante-Dube*	
Michael S. Johnson*	Quality Electric Inc.	Susan Porter	
Michael Stowe	Ray and Dianne Smith	Susan Ross	
Michael and Mary Stevens	Raymond West	Sydney and Deborah Sewall	
Michelle Roberts	Rebecca Vallerand*	Sylvia Bilodeau	
Midcoast Kayak*	Remedy Salon & Spa*	Tammy Harrington	
Midcoast Unitarian Universalists	Richard A. Pottle	Tammy and Marc Zwolinski	
Mike Diaz	Richard and Betty Harvey	Tarsha Rewa	
Mike Guarino	Richard Thomspson*	Terence and Moira McCabe	
Mike and Shirley Johnson	Rick Ness	Terrance Preble	
Monkey C Monkey Do*	Rita Oellers	Terrance Thomas	
Monique Mitchell	Robert Bernier	The 99 Restaurant*	
	Robin Glassmen*	The Strand Theatre*	
	Robin King		

** Indicates in-kind donors*



When Love Becomes Care

A Husband's Promise Through Alzheimer's

"It's humbling. You have to be willing to accept where you are, and be able to reach out when necessary..."

-John Newby

John Newby has worn many hats—husband, father, doctor, chef, writer, photographer. Today, the role that defines his life most is caregiver to his wife, Venus.

Originally from Michigan, John met Venus in college. They moved to the Brunswick area in 2012 for John's work and later settled in Harpswell after their youngest child graduated high school. By 2018, John began noticing changes in Venus. She was forgetting familiar things and getting lost while driving.

After extensive testing, Venus was diagnosed with early-onset Alzheimer's at just 53.

Early on, John made a decision he would care for her at home. "When you care for someone, you adapt," he said. "It's something you just do." He sees caregiving as a test of commitment. "When I married her, we became one. When she hurts, I hurt."

Venus had worked as a social worker and was deeply creative. She loved

art, painting, and working with her hands, even selling handmade soaps in Freeport stores and volunteering as a docent at the Bowdoin Museum.

Today, her world is much smaller. She sleeps much of the day and speaks very little. Some days she recognizes John; other days she does not.

John now provides round-the-clock care—bathing, feeding, and tending to her daily needs. Conversation has faded, but music still reaches her. "She'll tap her foot or mouth the words," he said. That connection is still there.

Alzheimer's affects women disproportionately, yet John notes that caregiving can be especially isolating for men. "Men struggle to ask for help," he said. He encourages others to seek support and accept it. "It's humbling. You have to be willing to accept where you are, and be able to reach out when necessary — and be open to receiving help." It is hard John says, because there are not nearly enough resources

for individuals going through Alzheimer's.

The disease has also taken a financial toll, exhausting much of their retirement savings. John supplements income through online work and writing — something he is grateful for. His book, *Brownies and Coffee* (browniesandcoffee.com), began as research into alternative treatments and explores a link between caffeine and reduced dementia risk—findings later echoed by a study published in *The Journal of the American Medical Association* (February 2026) John explained.

He expressed his appreciation for the services provided by Spectrum Generations and currently joined the agency's Advisory Council.

Alzheimer's, John says, has "changed our whole world." Caregiving has taught him resilience, humility, and self-discovery. "You learn a lot about yourself," he said. "And you learn the importance of reaching out—and letting others help." ■

SPECTRUM GENERATIONS FAMILY CAREGIVER SERVICES

Caring for a loved one is meaningful, but it can also be overwhelming. Through Family Caregiver Services at Spectrum Generations, you don't have to navigate it alone. Whether you're just beginning your caregiving journey or managing complex, long-term needs, our team is here to help you find balance between the person you care for, your family, and your own well-being. We offer evidence-

based classes (Dealing with Dementia), support groups, and respite options that help you build personalized long-term care plans and connect you with trusted local resources. With compassionate experts by your side, you can feel more confident, prepared, and supported every step of the way. For more information on Family Caregiver Services, call (800) 639-1553 or email:

FCGRespite@spectrumgenerations.org.

Home Repairs, Chores, and Hope

Small Repairs Yield Life-Changing Impact

Two programs from Spectrum Generations help older and disabled adults stay independent by providing home repairs and everyday or seasonal chore assistance that supports aging in place.

“Ramping Up Repairs” (RUR) was launched last fall using a one-time allocation of \$100,000, while the “Chore” program was bolstered with \$40,000 from \$767,813 in state discretionary funding under LD 814, The Older Mainers Act. While 85% of these funds supported existing services such as Meals on Wheels and Outreach, Ramping Up Repairs and Chore address urgent home repair needs across our service area.

Typical RUR projects include building or repairing ramps, replacing or adjusting internal or external doors to aid with heat retention or security, adding bathroom grab bars, installing non-slip tub strips, replacing dim lighting fixtures, and installing motion-sensor lights. Chore helps with yard work, snow removal, lawn mowing, and house cleaning.

According to Community Services Manager David Cornforth, RUR is currently focusing on projects in the Sagadahoc County area and utilizing a volunteer workforce.

“Working with community partners has been invaluable in meeting peoples’ needs in our service area,” David said. “We truly couldn’t make this happen without them.”

Feedback from the people we have served

“This would be amazing!” Patricia said. “You don’t understand how this just makes my day. I never thought that just sitting down with you today (David) was going to go like this. Thank you, thank you!”

Patricia, who is in her late seventies, is visually impaired, homebound, and lives alone on a fixed income in her Brunswick home. She was assessed and qualified for the RUR program which installed grab bars and a basement handrail for her safety. Additional support covering the cost of plowing, shoveling, salting, and sanding was included through the Chore program, which helped her save money on these expenses.

On February 4, Patricia’s case manager emailed David, noting that our services brought tears of joy to her eyes and greatly improved her outlook.



A Somerset County Success Story

When Laureanne first heard about the RUR Program after reading about it in the Spectrum Generations newsletter, she was very excited. David Cornforth visited her Somerset County home and confirmed immediate repairs were needed.

Although not all repairs identified were completed, Cornforth said two doors and a section of her deck were repaired. Additionally, her roof was in bad shape and there was noticeable water damage in her kitchen. Cornforth was able to connect her to a partner agency who agreed she needed a full roof replacement and completed the job within a week.

She is extremely happy with the results of her repairs and with the entire process and said she would recommend the program “100-percent” to anyone needing repairs. “For me, this program is the best in the world. They installed beautiful new doors that let in the light,” she said. “When they fixed my deck, that was another blessing.”

Collaboration and Community Investment help preserve a home

A long-term resident—an elder woman living alone with significant mental health challenges—was facing a lease violation due to unsafe apartment conditions. What began as clutter had escalated into hoarding, putting her safety and tenancy at risk. As her anxiety grew and her health declined, she stopped opening mail, attending appointments, and preparing meals. Eviction became a real possibility.

The resident service coordinator reconnected the resident to essential services. With support from Spectrum Generations’ Community Services Specialist, her MaineCare coverage was restored, allowing her to reestablish primary and mental health care. This access became the foundation for recovery.

Spectrum Generations also addressed her immediate food insecurity through emergency meals, Meals on Wheels, and an on-site congregate meal program—helping her regain



Continued on the next page.



strength and stability. Most critically, Spectrum Generations provided emergency assistance through the Chore program, making it possible to hire a commercial cleaning service. The apartment was restored to safety standards, the lease violation resolved, and eviction prevented.

Because of coordinated support, compassion, and community investment, this resident remains safely housed— connected to services, managing her health, and living in a clean, safe home.

Emergency Repairs Keep a Kennebec County Resident at Home

We recently received an urgent call from a municipality in Kennebec County wondering if we could help one of their residents from a distressing situation.

The resident had just returned home from a seven-day hospital stay only to discover his house had no heat and the water pipes were frozen. The toilet was also cracked and there was no running water. According to the town official, the house was in a state of disrepair because the resident did not have the means to pay for services needed.

Additionally, the resident was battling several ailments, including throat cancer, which caused another barrier, as he difficulty communicating effectively.

The town had limited funds and could not shoulder the costs of paying for a hotel while a plan was solidified. They were also hoping the resident would not have to stay in a shelter through this ordeal.

Working with Spectrum Generations' RUR program, a heating, ventilation and air conditioning (HVAC) partner was secured and a plan was launched. That same day, HVAC professionals were assessing the project to determine the best course of action so the resident would not become homeless.

This quick resolution was able to keep the resident in his home over the weekend and avoid potential hospitalization, or use of town funds for a hotel. This fix was all made possible by the discretionary funds given to Spectrum Generations in the FY26 budget.

To date, RUR has completed 27 projects totaling \$89,674 dollars, while Chore has helped 11 people. To continue these programs, new funding sources or further state support will be necessary.

If you would like to help, visit www.SpectrumGenerations.org. ■

Atlas Room

Spectrum Generations and Maine Pine Catering have teamed up to bring an exciting new gathering space to the Muskie Community Center in Waterville.



Welcome to The Atlas Room — where journeys begin and stories unfold.

Tucked in the heart of Waterville, this intimate gathering space blends the charm of a modern lounge with the spirit of global exploration. Sip from a curated selection of craft beers and wines, savor elevated pub fare, and settle in for conversation, connection, or quiet escape. Gather for game night, catch the latest match, or enjoy the many activities offered. The Atlas Room invites you to unwind where comfort meets craft—tastefully off the map. ■



Poppy (pictured at right,)

caught the first fish of the day at the **Gene & Lucille Letourneau Ice Fishing Derby** on February 15 — and it was her very first time ice fishing! Even more special, her father had given her a fishing pole for Christmas. What an unforgettable memory to make together!

Poppy went on to win third place in the white perch category with a fish weighing in at 14 ounces!



Fish Tales, Snow Dragons, & Reptiles —

What could be more fun?



28TH ANNUAL
Gene & Lucille Letourneau
ICE FISHING
Derby

Thank you to everyone who came out to support our fundraiser. In all, we raised \$19,000 to support our programs and services!

Thank you to all the local businesses that donated items for the silent auction!

Thank you to our celebrity guests **Waterville Creates (snow painting), Mr. Drew & His Animals Too!**, and children's book author **Tiffany Ricci!**

Thank you to our major sponsors:

The Fisherman's Special:
Connected Credit Union

The Big Catch:
Waterville Masonic Lodge
Sukeforth Family Foundation
Central Maine Motors Auto Group
Central Maine Power

Thank you to our major prize sponsor,
Elder Law Offices of John and Mark Nale.



Waterville
Masonic
Lodge

Dukeforth Family
Foundation

CENTRAL MAINE
MOTORS AUTO GROUP



CENTRAL MAINE
POWER
An AVANGRID Company

ELDER LAW OFFICES OF
JOHN & MARK NALE
Experience Integrity Compassion



Spectrum Generations
One Weston Court
Suite 109
Augusta, ME 04330
SpectrumGenerations.org



14th ANNUAL
Celebrity *Chef* Challenge
Monday, Oct. 5 • 5 p.m. • Augusta Civic Center

Save the Date!



To purchase tickets or for sponsorship information, scan QR code.