



FABRIC

LAZZONI

MODERN FURNITURE & INTERIORS

Fabrics, a stunning part of Lazzoni material range, add a unique appearance to our products.

LAZZONI

MODERN FURNITURE & INTERIORS

FIBERS

Knowing the fabrics starts
with knowing the fiber.

Fiber is any type of natural or artificial material with a certain length, thinness and resistance, which is soft and suitable for wrapping, warping and bending.

FIBER ABBREVIATIONS

- ACRYLIC PC / PAN / ACR
- LINEN LIN / LI
- COTTON CO
- POLYESTER PES / PL
- POLIURETHANE PU
- VISCOSE VI / CV
- WOOL WO



ACRYLIC

PC / PAN / ACR

Acrylic Fabric has characteristics very similar to wool. It is also very similar to cotton, i.e. cotton fabric. When you touch or look to a product made of acrylic fabric, it gives you the feeling of being made of wool or cotton.

▲ ADVANTAGES

It is a fabric type that does not attract dust.

It is resistant to sunlight.

It gives a natural and warm feeling similar to wool.

▼ DISADVANTAGES

It does not absorb sweat and humidity well.

📌 OUR FABRICS CONTAINING ACRYLIC

Lino - %84

Grid - %85

Soho - %69

Arte - %20



LINEN

LIN / LI

Linen fabric has a characteristic appearance and touch. When you touch or look to a product made of linen fabric, it gives you a tough and non-elastic feeling.



ADVANTAGES

It has a smooth and hairless structure.

It allows the body to breath and stay cool thanks to its coarse pored structure.

It is durable, does not attract dust and does not loose.



DISADVANTAGES

It has low elasticity.



OUR FABRICS CONTAINING LINEN

Arte - %2

Troy - %15

Papul - %15



COTTON

CO

Cotton, which is a natural fiber, can both be renewed and biologically decompose. When you touch or look to a product made of cotton fabric, it gives you a soft and comfortable feeling.



ADVANTAGES

It is an organically health type of fiber.

It is comfortable and soft.

It absorbs moisture and sweat well



DISADVANTAGES

It may have fading due to sunlight.

It may have pilling.



OUR FABRICS CONTAINING COTTON

Marche Geo - %60

Tessuto - %20

Troy - %15

Arte - %25

Bromo - %35

Megza - %75

Boucle - % 25

Berlin - %60

Papul - %30

Soho - %20

Shantay - %10

Inge - %60

Kai - %10



POLYESTER

PES / PL

Polyester, which is a synthetic fiber, should not be preferred for hot places. When you touch or look to a product made of polyester fabric, it gives you a slippy and light feeling.

▲ ADVANTAGES

It is easy to care and it can be cleaned easily.

It is long lasting and durable.

You do not see any fading on the fabric color due to washing / cleaning, etc.

▼ DISADVANTAGES

It does not absorb sweat and humidity well.

Pilling problem is common.

📌 OUR FABRICS CONTAINING POLYEST

Kai - %80

Megza - %25

Inge - %40

Soho - %11

Bromo - %55

Shantay - %75

Arte - %24

Lino - %16

Geo - %100

Troy - %30

Grid - %15

Tessuto - %80

Basilica - %100

Bangle - %100

Life - %100

Samt - %100

Lalika - %20

Papul - %12



VISCOSE

VI / CV /VIS

Viscose, a natural fiber, ensures that fabric colors are viewed as vivid and bright. When you touch or look to a product made of viscose fabric, it gives you an elegant and comfortable feeling.

▲ ADVANTAGES

It is an organically health type of fiber.

It is a soft and comfortable fabric.

It absorbs moisture and sweat well.

▼ DISADVANTAGES

Viscose, which can stretch, should be cleaned with warm or cold water.

📌 OUR FABRICS CONTAINING VISCOSE

Lalika - %80

Marche Geo - %40

Berlin - %40

Papul - %20

Troy - %10

Arte - %15

Shantay - %15

Bromo - %10



WOOL

WO

Wool, a natural fiber, is a healthy fabric type that can be used in all seasons. When you touch or look to a product made of wool fabric, it gives you a soft and full feeling.

▲ ADVANTAGES

It is an organically health type of fiber.

It is durable and long lasting.

It is soft and full.

It absorbs moisture and sweat well.

▼ DISADVANTAGES

Its cleaning requires more care and attention.

It becomes felted when exposed to excess temperature, moisture and pressure.

Sunlight and chemical cleaners can damage the wool fabric.

🏷️ OUR FABRICS CONTAINING WOOL

Arte - %14



LEATHER

Artificial Leather

Artificial or synthetic leather is usually used as an alternative to genuine leather. In contrary to genuine leather, artificial leather is not made of natural skin of animals and it is a human-made material, made of unnatural polyurethane (PU) or polyvinyl chloride (PVC). It looks more proper, smooth and regular and it feels cold when it is touched.



ADVANTAGES

It is much easier to clean and maintain, compared to genuine leather.

Artificial leather does not keep moisture and therefore it is resistant to stains.



DISADVANTAGES

Artificial leather is soft, but it gives a plastic feeling when it is touched.

It does not breathe and it may give discomfort and stick to the skin when it is used for longer times.



OUR ARTIFICIAL LEATHER FABRIC

Novus - PU /PVC /PES



LEATHER

Genuine Leather

It is made of processed and tanned animal skins. Genuine leather has a chic, high quality and comfortable appearance.

▲ ADVANTAGES

It is durable, high quality and long lasting.

It protects from bad weather conditions and it is waterproof thanks to high moisture adsorbing feature.

It does not cause sweating thanks to its air permeability (breathing) feature.

Problems, such as quick tearing and wearing are not encountered.

▼ DISADVANTAGES

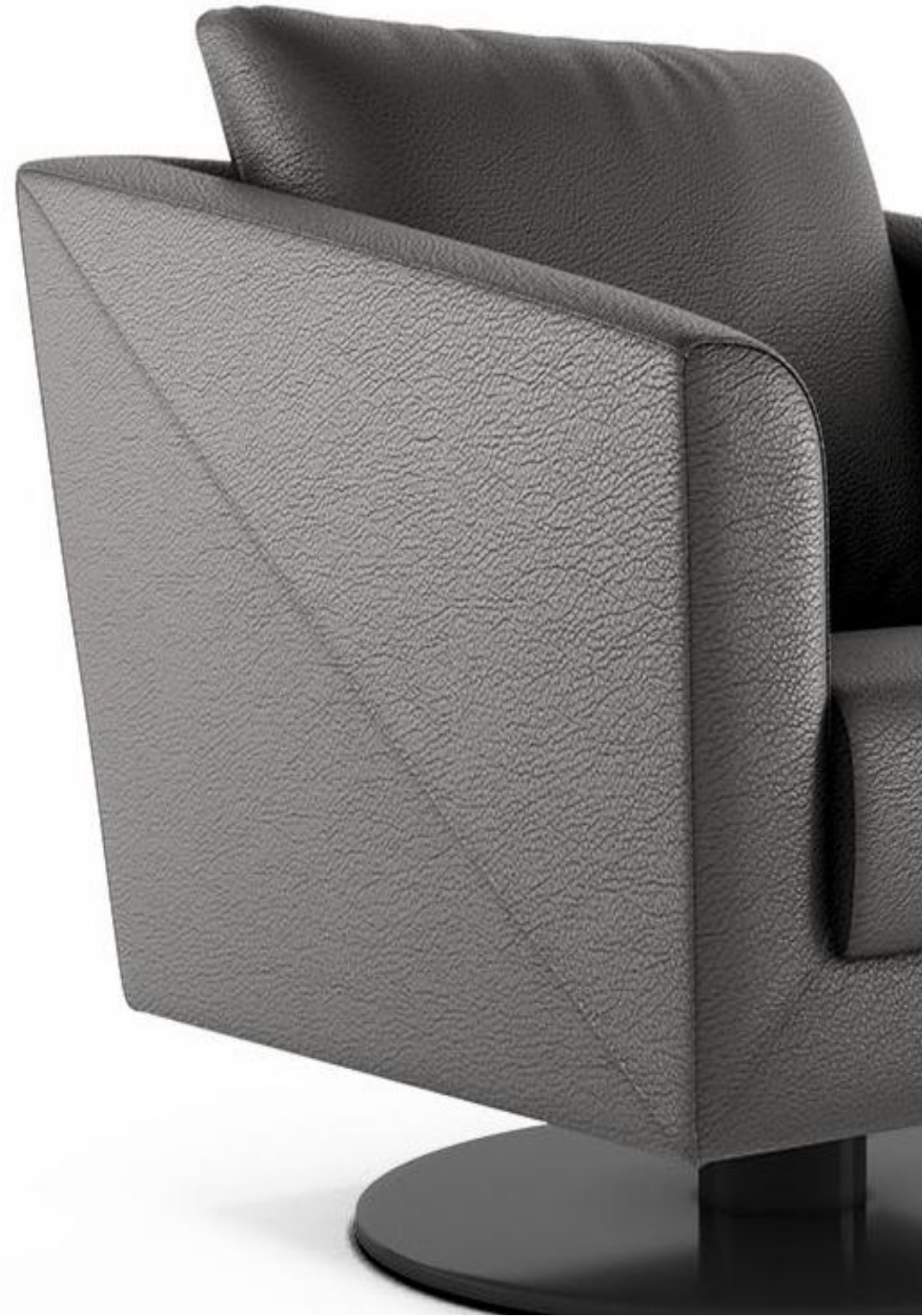
Its cleaning requires more care and attention.

It fades and loses its color when it is exposed to sunlight for a long period.

It may stink.

🏷️ OUR GENUINE LEATHER FABRICS

Linea - Calf Leather
Maldiva - Calf Leather
Toscana - Calf Leather



FIBERS

Why Do We Mix Fibers?



TO INCREASE FABRIC QUALITY

We can increase utilization properties, such as friction durability, resistance to stress and wrinkle resistance.



TO CHANGE APPEARANCE

Chemical fibers are used when it is requested to change the appearance and add vividness to the brightness and color of natural fibers.



TO IMPROVE MAINTAINABILITY

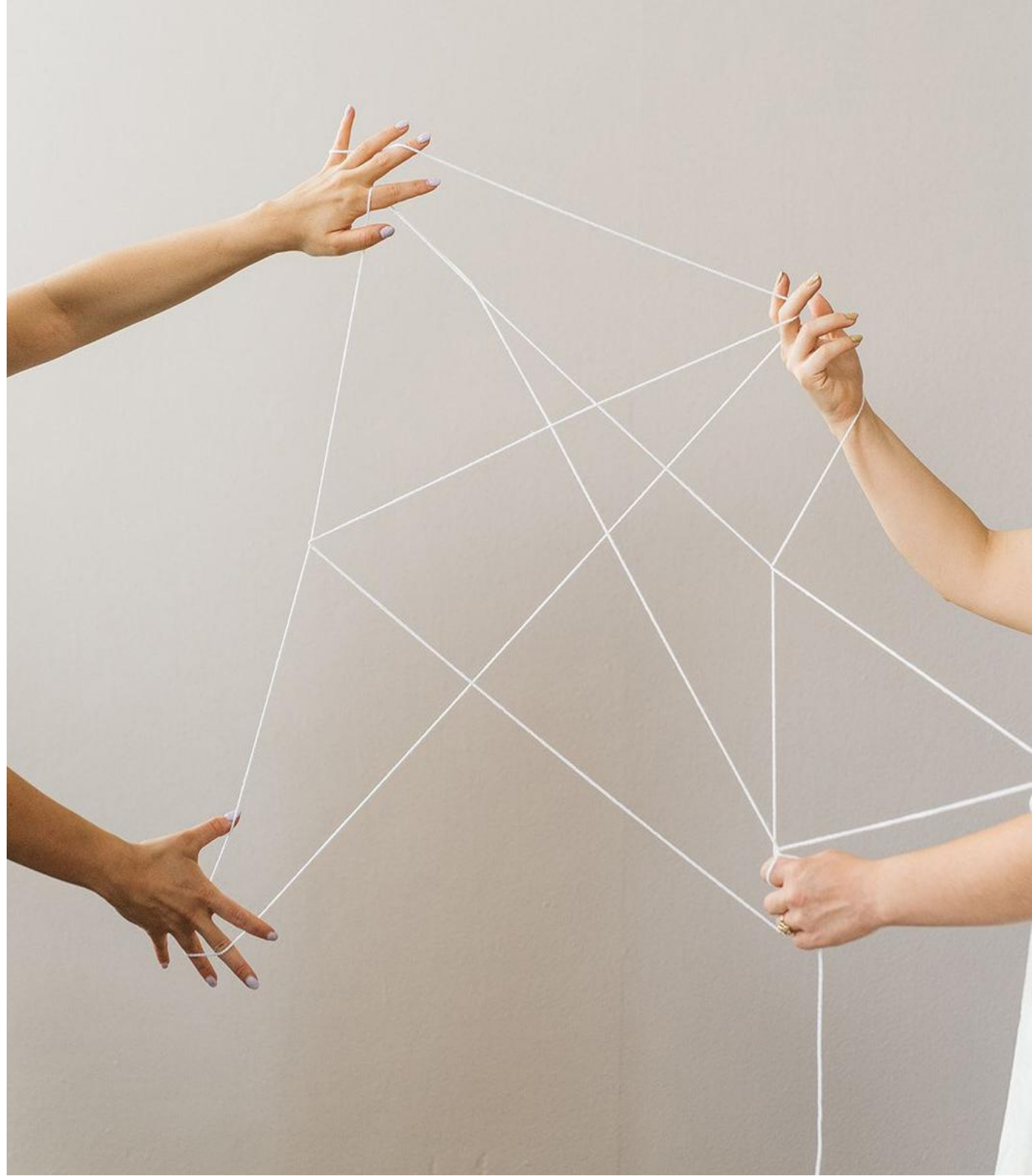
Using different types of fiber would facilitate the maintenance.

Washability, drying and ironing features can be included to maintainability



TO DECREASE COSTS

Production of natural fibers is more difficult and costly than chemical fibers. While work force and time is needed for natural fibers, chemical fibers are produced easily by chemical synthesis and they are low cost.





MARTINDALE (Abrasion Value)

Martindale value means the resistance of fabric against other materials during repeating friction with those materials.

10.000

It is recommended to use for decorative purposes (e.g. accent and pillow), therefore it is not recommended for general use.

10.000 - 20.000

It is recommended to use the fabric on furnitures that will be used occasionally.

25.000 - 30.000

It is recommended to use the fabric on main furnitures that will be used daily and continuously.

30.000 üstü

The fabric is suitable both for commercial and heavy use.





WEIGHT (Weight)

Fabric weight is measured as the weight of 1 m² fabric in terms of gram. Fabric weight is considered as the thickness or density of fabric in daily life.

Factors Affecting Fabric Weight

fabric density
number and type of yarns being used
weave type used in fabric
finishing operations

Fabric Loosing

Loosing feature of fabrics, which is highly considered by consumers, is also directly related with the fabric weight. Low fabric weight increases loosing feature of fabric.

Air Permeability

Low fabric weight changes the stand of fabric and increases air permeability.

Fabric Thickness

Low fabric weight means less fabric thickness whereas high fabric weight means high fabric thickness.



FABRIC IN DESIGNING INTERIOR

MORE THAN COLOR AND PATTERN

Fabric that are selected when designing a venue must be matched with the correct product and user.

Being aware of technical specifications of fabrics in addition to your color and pattern preferences would not only enhance your design, but also gives a unique experience to the user.

Fabric - User Analysis

3 main questions and side questions will greatly help you when selecting your fabric. We would be capable to offer the right product and right fabric to the right user thanks to the analyses, based on fabric content (fiber details) and fabric technical specifications (martindale and weight value).



WHO

Analyse the User

Is the user living alone? Does he have any pet? Does he have any kid? Is he looking for an aesthetic product? Is he looking for a functional and long lasting product?



WHERE

Analyse the Venue

Is it indoor? Is it outdoor? Is the venue being exposed to environmental factors, such as sun, rain or wind?



HOW

Analyse the Venue's Function

Who is/are using the venue? Why is the venue being used? What is the frequency of use of the venue? Which one of resting, dining, hosting guests, etc. habits are exercised by the user in the venue?



FABRIC - SPECIFICATIONS

SERIES	FABRIC CONTENT	WEIGHT	MARTINDALE	PROMINENT FEATURE
ARTE	25% CO 20 % ACR 15 % VIS 24% PES 14% WO 2% LIN	678 gr m2 ±%2	20.000	It is comfortable and soft. It absorbs moisture and sweat well. It may have fading due to sunlight. It may have pilling.
BANGLE	%100 PES	310 gr m2 ±%2	10.000	It is easy to care and it can be cleaned easily. It is long lasting and durable. You do not see any fading on the fabric color due to washing / cleaning, etc. It does not absorb sweat and humidity well. Pilling problem is common.
BASILICA	%100 PES	585 gr m2 ±%2	10.000	It is easy to care and it can be cleaned easily. It is long lasting and durable. You do not see any fading on the fabric color due to washing / cleaning, etc. It does not absorb sweat and humidity well. Pilling problem is common.
BERLIN	%60 CO % 40 VIS	407 gr m2 ±%2	10.000	It is comfortable and soft. It absorbs moisture and sweat well. It may have fading due to sunlight. It may have pilling.
BOUCLE	%75 ACR %25 CO	690 gr m2 ±%2	40.000	It is a fabric type that does not attract dust. It is resistant to sunlight. It gives a natural and warm feeling similar to wool. It does not absorb sweat and humidity well.
BROMO	%55 PES %35CO %10VIS	504 gr m2 ±%2	25.000	It is easy to care and it can be cleaned easily. It is long lasting and durable. You do not see any fading on the fabric color due to washing / cleaning, etc. It does not absorb sweat and humidity well. Pilling problem is common.
GEO	%100 PES	455 gr m2 ±%2	10.000	It is easy to care and it can be cleaned easily. It is long lasting and durable. You do not see any fading on the fabric color due to washing / cleaning, etc. It does not absorb sweat and humidity well. Pilling problem is common.
GRID	%15 PES %85 ACR	686 gr m2 ±%2	20.000	It is a fabric type that does not attract dust. It is resistant to sunlight. It gives a natural and warm feeling similar to wool. It does not absorb sweat and humidity well.
INGE	%60 CO %40PES	415 gr m2 ±%2	15.000	It is comfortable and soft. It absorbs moisture and sweat well. It may have fading due to sunlight. It may have pilling.
KAI	%20 CO %80PES	320 gr m2 ±%2	30.000	It is easy to care and it can be cleaned easily. It is long lasting and durable. You do not see any fading on the fabric color due to washing / cleaning, etc. It does not absorb sweat and humidity well. Pilling problem is common.

FABRIC - SPECIFICATIONS

LALIKA	%20 PES %80 VIS	507 gr m2 ±%2	10.000	It is an organically health type of fiber. It is a soft and comfortable fabric. It absorbs moisture and sweat well. Viscose, which can stretch, should be cleaned with warm or cold water.
LARIX	%20 PES %52 ACR %28 CO	970 gr m2 ±%2	50.000	It is a fabric type that does not attract dust. It is resistant to sunlight. It gives a natural and warm feeling similar to wool. It does not absorb sweat and humidity well.
LIFE	%100PES	340 gr m2 ±%2	35.000	It is easy to care and it can be cleaned easily. It is long lasting and durable. You do not see any fading on the fabric color due to washing / cleaning, etc. It does not absorb sweat and humidity well. Pilling problem is common.
LINEA	BOVINE OF EUROPEAN ORIGIN, LIGHTLY BUFFED NATURAL GRAIN Thickness mm 0.9 - 1.1 hide average size 4.8-5.0 sqm			It is durable, high quality and long lasting. It protects from bad weather conditions and it is waterproof thanks to high moisture adsorbing feature. It does not cause sweating thanks to its air permeability (breathing) feature. Problems, such as quick tearing and wearing are not encountered. Its cleaning requires more care and attention. It fades and loses its color when it is exposed to sunlight for a long period. It may stink.
LINO	%16 PES %84 ACR	686 gr m2 ±%2	20.000	It is a fabric type that does not attract dust. It is resistant to sunlight. It gives a natural and warm feeling similar to wool. It does not absorb sweat and humidity well.
LOOP	58% ACR 17% CO 25% PL	615 gr m2 ±%2	40.000	It is a fabric type that does not attract dust. It is resistant to sunlight. It gives a natural and warm feeling similar to wool. It does not absorb sweat and humidity well.
MALDIVE	BOVINE OF EUROPEAN ORIGIN CORRECTED AND EMBOSSED FOR ENHANCED LARGER GRAIN APPEARANCE Thickness mm 1.3 - 1.5 hide average size 3.0-3.5.0 sqm			It is durable, high quality and long lasting. It protects from bad weather conditions and it is waterproof thanks to high moisture adsorbing feature. It does not cause sweating thanks to its air permeability (breathing) feature. Problems, such as quick tearing and wearing are not encountered. Its cleaning requires more care and attention. It fades and loses its color when it is exposed to sunlight for a long period. It may stink.
MARCHE GEO	%60 CO %40 VIS	405 gr m2 ±%2	10.000	It is comfortable and soft. It absorbs moisture and sweat well. It may have fading due to sunlight. It may have pilling.
MEGZA	%75 CO %25 PES	530 gr m2 ±%2	25.000	It is comfortable and soft. It absorbs moisture and sweat well. It may have fading due to sunlight. It may have pilling.

FABRIC - SPECIFICATIONS

NOVUS	PU-PVC-PES	630 gr m2 ±%2	100.000	It is much easier to clean and maintain, compared to genuine leather. Artificial leather does not keep moisture and therefore it is resistant to stains. Artificial leather is soft, but it gives a plastic feeling when it is touched. It does not breathe and it may give discomfort and stick to the skin when it is used for longer times.
SAMT	%100PES	325 gr m2 ±%2	35.000	It is easy to care and it can be cleaned easily. It is long lasting and durable. You do not see any fading on the fabric color due to washing / cleaning, etc. It does not absorb sweat and humidity well. Pilling problem is common.
SHANTAY	%75PES %15VIS %10CO	300 gr m2 ±%2	20.000	It is easy to care and it can be cleaned easily. It is long lasting and durable. You do not see any fading on the fabric color due to washing / cleaning, etc. It does not absorb sweat and humidity well. Pilling problem is common.
SOHO	69% ACR 11% PES 20% CO	700 gr m2 ±%2	50.000	It is a fabric type that does not attract dust. It is resistant to sunlight. It gives a natural and warm feeling similar to wool. It does not absorb sweat and humidity well.
TESSUTO	%20 CO %80 PES	385 gr m2 ±%2	40.000	It is easy to care and it can be cleaned easily. It is long lasting and durable. You do not see any fading on the fabric color due to washing / cleaning, etc. It does not absorb sweat and humidity well. Pilling problem is common.
TOSCANA	BOVINE OF EUROPEAN ORIGIN CORRECTED AND EMBOSSED FOR ENHANCED LARGER GRAIN APPEARANCE Thickness mm 1.3 - 1.5 hide average size 3.0-3.5.0 sqm			It is durable, high quality and long lasting. It protects from bad weather conditions and it is waterproof thanks to high moisture adsorbing feature. It does not cause sweating thanks to its air permeability (breathing) feature. Problems, such as quick tearing and wearing are not encountered. Its cleaning requires more care and attention. It fades and loses its color when it is exposed to sunlight for a long period. It may stink.
TROY	%15 COT %15 LIN %10 VIS %30 ACR %30 PES	641 gr m2 ±%2	20.000	It has a smooth and hairless structure. It allows the body to breath and stay cool thanks to its coarse pored structure. It is durable, does not attract dust and does not loose. It has low elasticity.
TURF	%100PES	330 gr m2 ±%2	65.000	It is easy to care and it can be cleaned easily. It is long lasting and durable. You do not see any fading on the fabric color due to washing / cleaning, etc. It does not absorb sweat and humidity well. Pilling problem is common.

FABRIC - SPECIFICATIONS

<i>OUTDOOR SERIES</i>				
ALPS	%100 OLEFIN	280 gr m2 ±%2	70.000	Resistant to staining and mildew It has water repellent feature Resistant to chlorine etc. Factors Resistant to sunlight, abrasion. It is suitable for use for many years.
FUJI	%100 OLEFIN	370 gr m2 ±%2	25.000	Resistant to staining and mildew It has water repellent feature Resistant to chlorine etc. Factors Resistant to sunlight, abrasion. It is suitable for use for many years.
EVEREST	%100 OLEFIN	500 gr m2 ±%2	30.000	Resistant to staining and mildew It has water repellent feature Resistant to chlorine etc. Factors Resistant to sunlight, abrasion. It is suitable for use for many years.
OLYMPOS	%100 OLEFIN	280 gr m2 ±%2	70.000	Resistant to staining and mildew It has water repellent feature Resistant to chlorine etc. Factors Resistant to sunlight, abrasion. It is suitable for use for many years.

FABRIC

MAINTENANCE RECOMMENDATIONS

There might be problems of haul off and color change in the fabric that is washed in washing machine. Strong local tensions may cause tearing on the upholstery and rip off stitches in all upholstered products.

■
Strong and bleaching chemical cleaners, such as bleaches and paint remover detergents must never be used in cleaning sitting groups and sofas. Machines and equipment that may damage the product, such as carpet washing machine and bristle brushes must not be used.

■
Products covered with fabric and leather, such as sofas and couches, must be kept away from heat sources, such as stoves or radiators, and direct sunlight to prevent any damage or fading of the upholstery.

■
Piles may lean towards a direction and waving that looks like color difference may occur on pile fabrics due to use. This is not related with the fabric's quality, but a natural result of the fabric's structure. Pile fabrics must be cleaned towards the direction of piles during SIMPLE CLEANING.

■
There may be wrinkles, bloating and color differences on the surface of leather, which are not considered as faults, and they increase the value of leather in time due to its natural structure.

■
It is normal to have fesi (3 - 5 pieces) goose downs on the fabric surface due to its structure when using goose down sofas and couches normally.



LAZZONI

MODERN FURNITURE & INTERIORS