

Dreamer

A residence by Robert Stone



A modern, single-story house with large glass windows and a circular opening is illuminated at night. A long, narrow swimming pool in the foreground reflects the house and the sky. Two white lounge chairs are positioned on the pool deck. The surrounding landscape is landscaped with palm trees and low-lying plants, some of which are lit with warm, yellow lights. The sky is dark blue.

COACH
KELLEY

**HOME
BY SIMON.**

kw COACHELLA VALLEY
KELLERWILLIAMS

HOME BY SIMON.



Curator's note

Most architecture gives you answers. A rare few ask you a better question.

Robert Stone has spent three decades asking better questions. The Dreamer Estate is his most articulate inquiry yet.

For years, Stone's work was a subject of cultural fascination - avant-garde, provocative, and validated by the arbiters of fashion and art. With Dreamer, his vision synthesizes. The tension that makes his work compelling becomes, for the first time, profoundly livable.

This is not a house that recedes into the landscape. It is a house that engages in a dialogue with it.

A space that challenges, comforts, and ultimately, changes how you see.

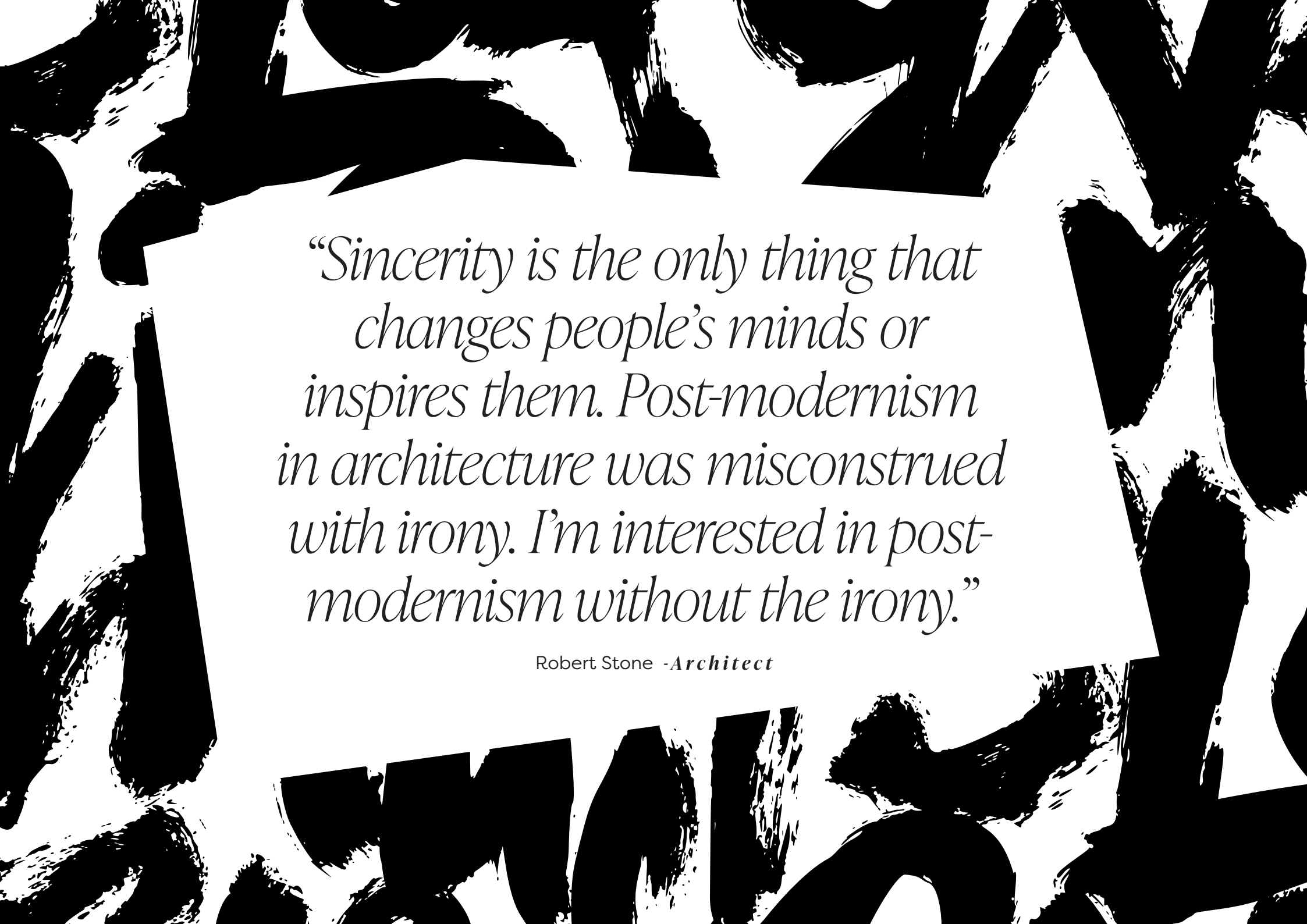
This is not a brochure. It is an invitation to understand the intent behind the form. An introduction to a work of cultural significance at the precise moment it becomes available to the collector.

A handwritten signature in black ink, reading "Simon Court". The signature is fluid and cursive, with the first name "Simon" and last name "Court" clearly legible.

Simon Court

Founder/Principal Curator

Home By Simon



“Sincerity is the only thing that changes people’s minds or inspires them. Post-modernism in architecture was misconstrued with irony. I’m interested in post-modernism without the irony.”

Robert Stone -*Architect*

The Vision

Robert Stone's worldview was shaped by punk. Not anarchy, but initiative. A belief in making things yourself and a sincere search for what feels real, applied to the built environment.

Over thirty years, his work has evolved from provocation to resolution. The early projects were sharp, critical experiments. With **Dreamer**, Stone enters a new phase. This is the work of an architect fully in command of his vision, where bold ideas are matched by clarity and craft.



38850 *Kelley Lane*

Rancho Mirage, California 92270



Before **Dreamer**, Stone designed **Acido Dorado** and **Rosa Muerta**, two radical desert homes that blurred the line between architecture and art. They became unlikely cultural icons, attracting the attention of **Saint Laurent**, **Vogue**, and **Beyoncé**. What began as bold experiments evolved into cinematic backdrops for some of the most influential voices in fashion and culture.

Dreamer is the next chapter. It is the first fully realized residence, not a prototype but a complete home. Here, the ideas introduced in those earlier works are refined and made fully livable.

This time, the vision can be yours.



*“The roof sits on the dirt like a
dropped lowrider.”*





California

Chicano

Futurism

A grounded piece of sculpture that reshapes the idea of shelter. Four shades of metallic glaze on traditional pottery tile create a surface that shimmers in the light, futuristic yet unmistakably handmade. It feels both rooted and otherworldly. You live beneath a reimagined piece of the California sky.





Breeze



BLOCKS

MISSION

MISSION

MISSION

MISSION

MISSION

.....
“Each block placed in the wall is a decision made by a person... It’s a human touch on a machine-made object.”



These walls are compositions. They filter light and desert views into an ever-changing pattern of shadow and texture. To live with them is to witness a daily performance of light. A constant, subtle reminder of the human hand at work in a machine-made world.



“The mirrored ceiling panels are not all perfectly set... When you walk around, everything moves, and the reflections jump. It feels like what California architecture should be.”

The Great Room

Pulling the Mountains Inside

Here, the boundary between inside and out dissolves. The mirrored ceilings pull the San Jacinto Mountains into the living space. This is not a room with a view; it is a room that consumes the view, making the landscape a permanent guest.



4,029 sqft





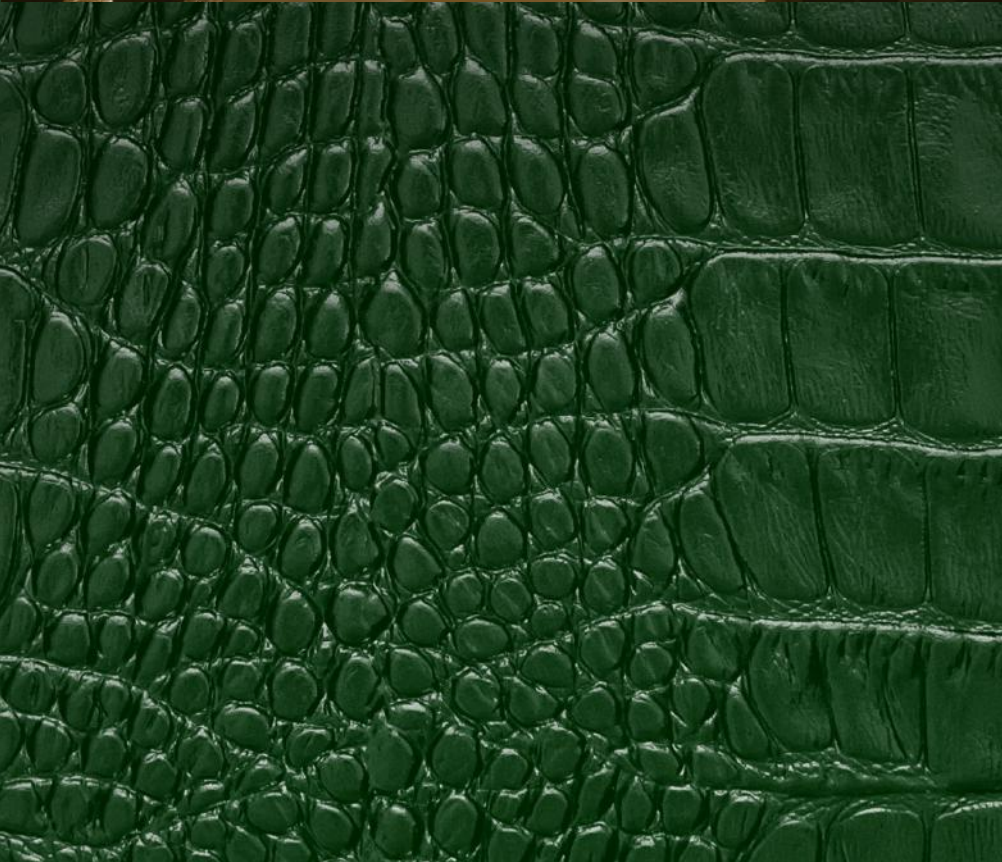
3.83 acres





The Kitchen

“One of the turning points for me was ‘90s Miu Miu. Miuccia Prada has a way of using materials and shapes that went far beyond architecture’s abstract purity.”



This kitchen rejects the safety of conventional luxury. It transforms a functional space into a bespoke art installation. The silver crocodile-embossed leather cabinetry is a tactile, provocative choice that turns the daily ritual of cooking into a form of performance.

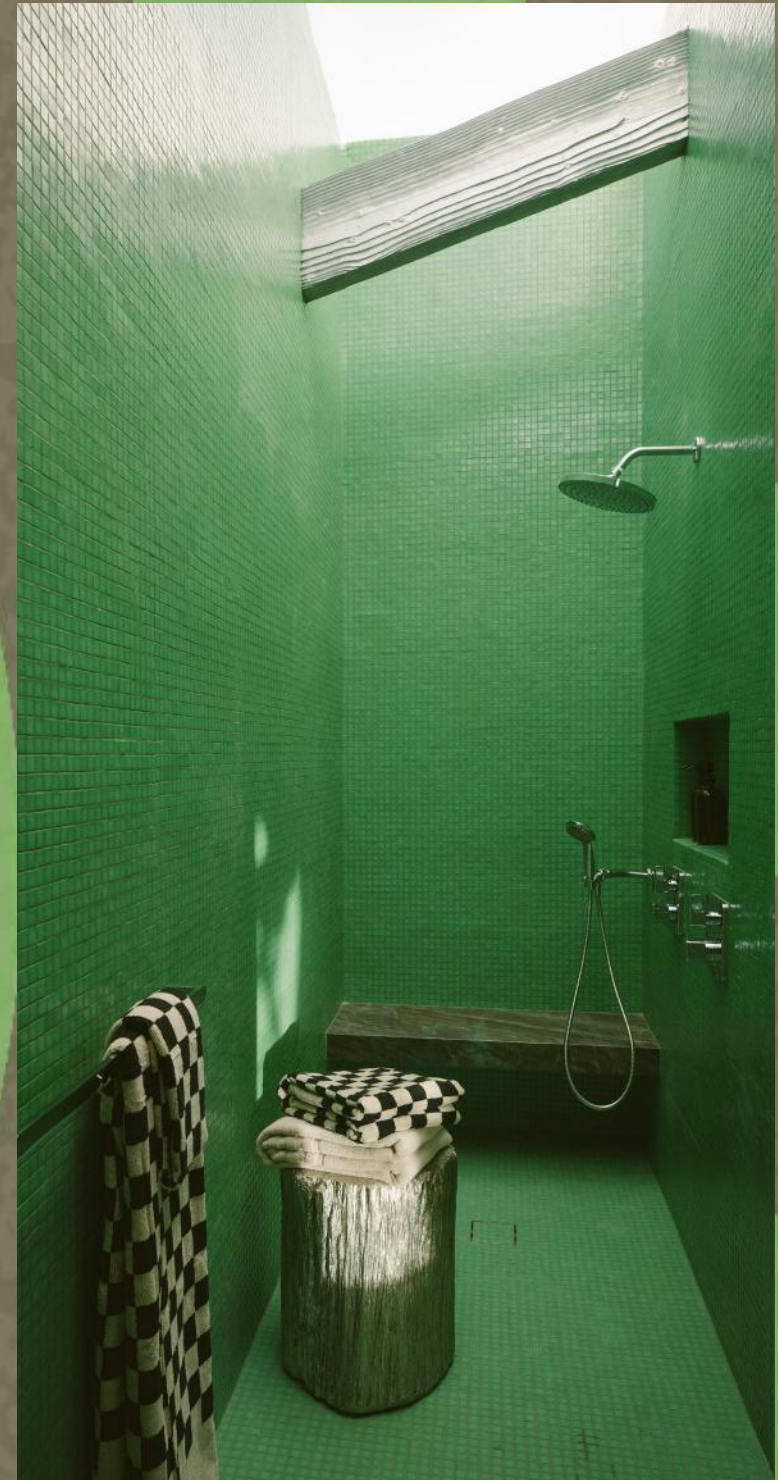
Primary Suite



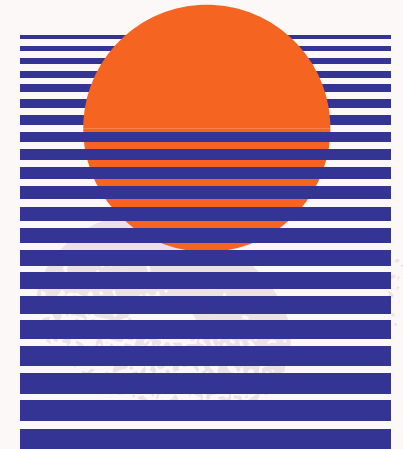
The primary suite is a retreat defined by a single, bold gesture: a wall of Kelly green tile. An unexpected shock of color in the desert palette. A moment of pure, unapologetic beauty that separates sleep from ritual.



“Perfection is boring. The things that stay with you, that feel alive, are always the ones that have some kind of tension.”

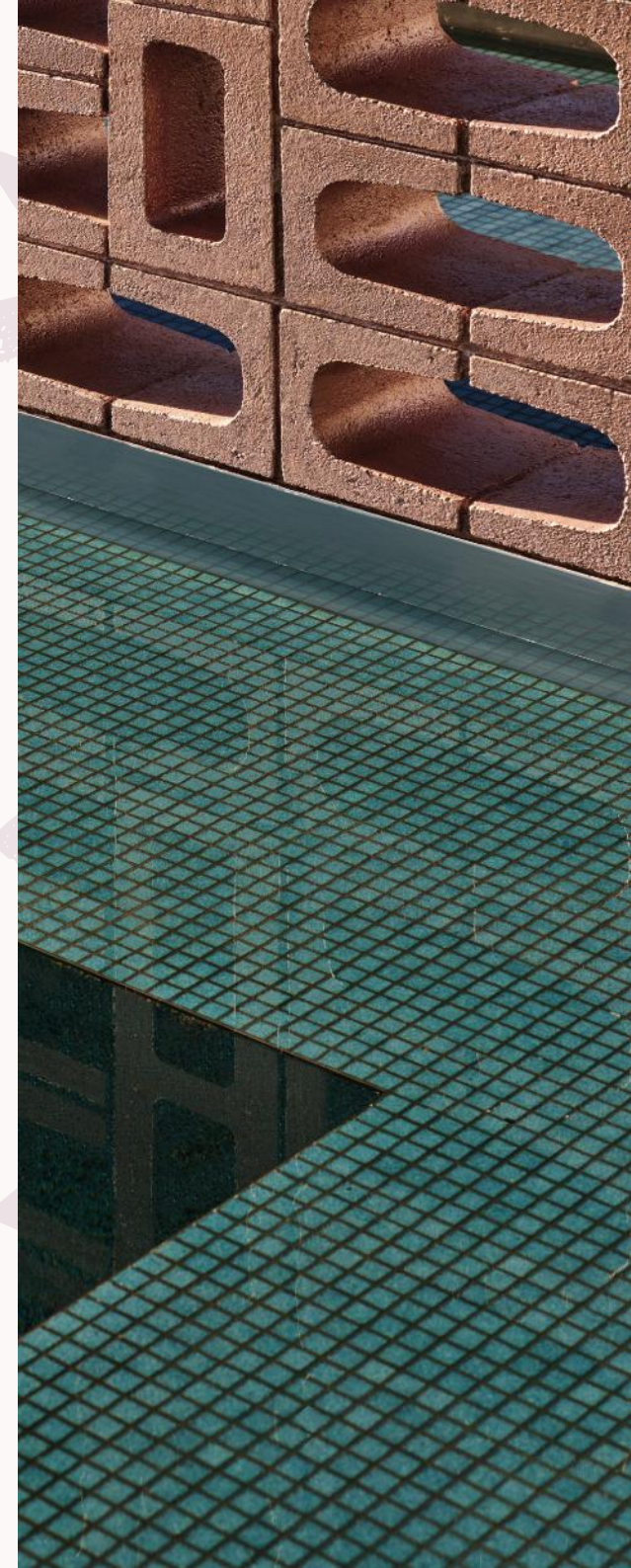


Pool & *Grounds*



“I’m not looking for harmony. I’m looking for interesting tension and complexity.”

The half-Olympic-length pool is the reflective spine of the estate. A line of water that organizes the nearly four acres of private landscape, mirroring the sky and anchoring the home in its environment. The grounds offer the profound luxury of silence. A canvas for future vision.



"I'm building small houses... they can be strange, they can be mysterious, and they can feel like they are yours alone."



Lil' Dreamer

is not a guest house. It is an independent residence.



With its own **entrance, kitchen, and living space**, it is designed to evolve with your life. It can be a recording studio for a musician in residence. An artist's retreat for focused work. Private quarters for extended family. It also supports large gatherings, allowing you to host two hundred guests while the main house remains your sanctuary.

The architecture does not dictate function. It provides the flexibility for whatever comes next.



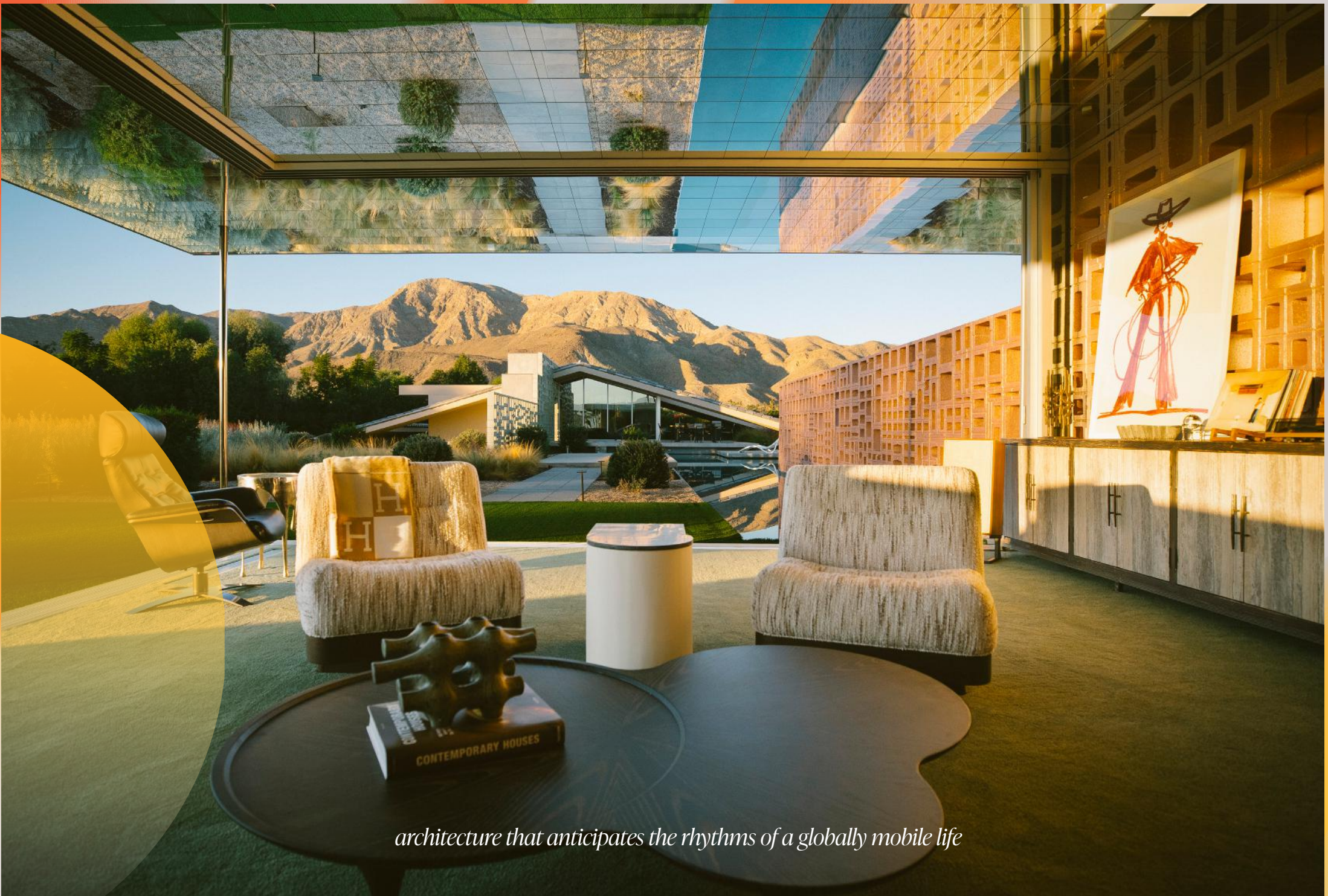
*Designed
for*

LIGHT

This estate was not placed in the desert. It was aligned with it.

The home's orientation follows the path of the sun, warmer in winter and cooler in summer. A deliberate decision that makes seasonal living something you actually feel.

The infrastructure is just as considered. A valet setup and service entrance allow for seamless entertaining at scale. The dual-structure design keeps the main residence private, while Lil' Dreamer supports the rhythm of hosting.



architecture that anticipates the rhythms of a globally mobile life

The Emerging **Enclave**

Great architecture often arrives ahead of its time and asks the world to catch up.

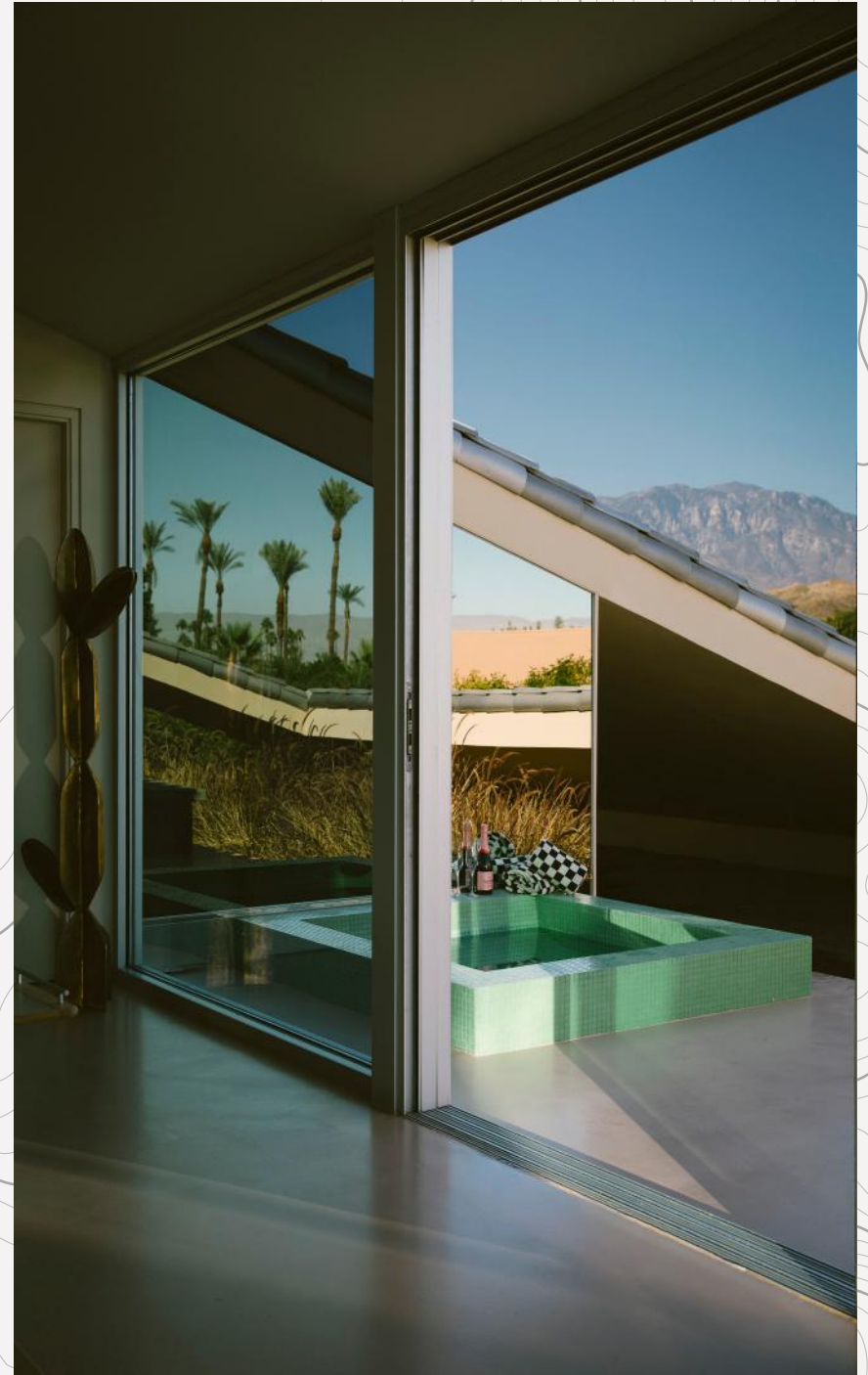
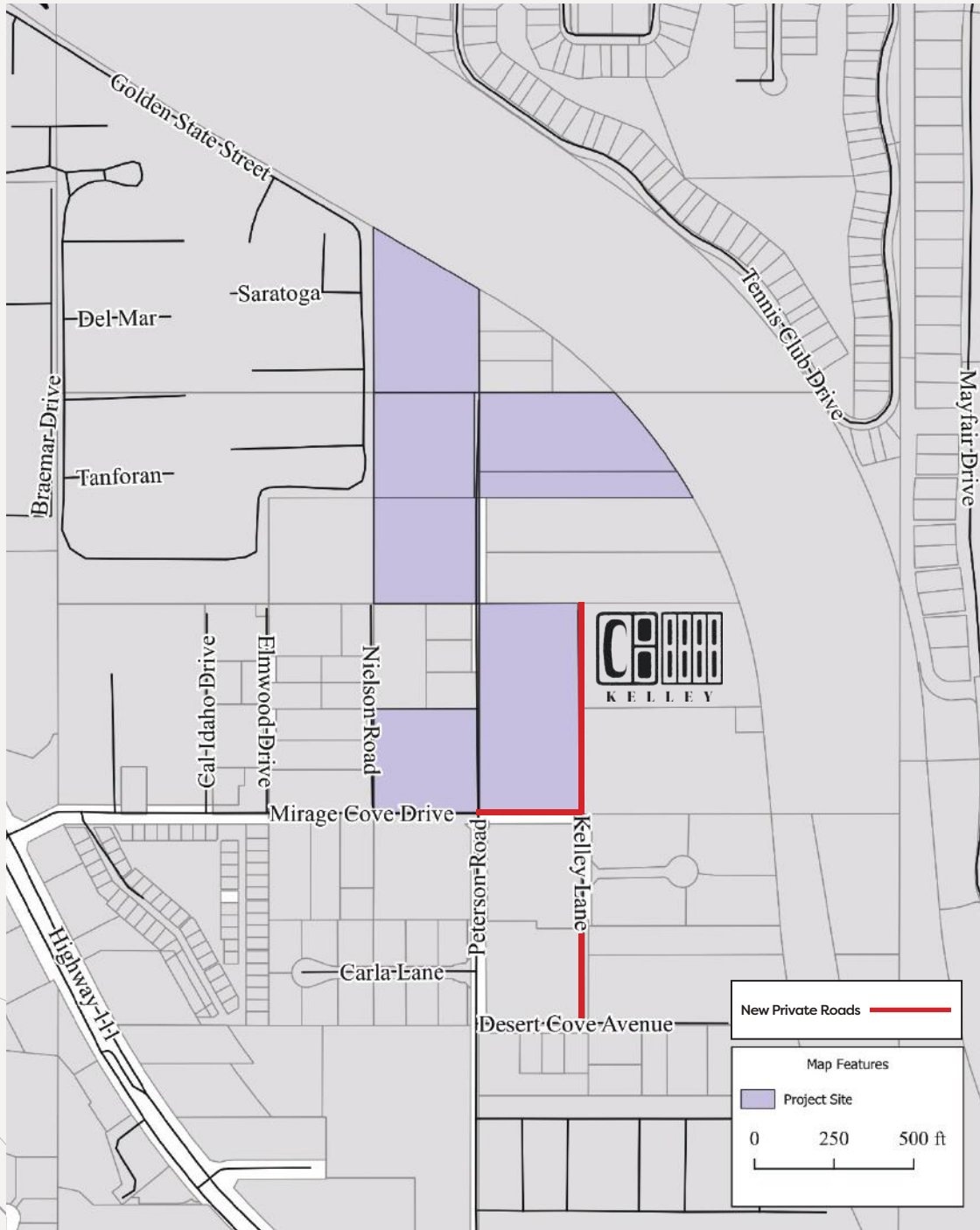
The purple shown on the map is a private enclave of sixteen architectural homes now being developed on the **former grounds of Frank Sinatra's ranch**. The once unpaved roads are being improved and paved, and the area is planned as a private, potentially gated community.

The **Dreamer Estate sits on 3.83 acres**, more than triple the largest lot in the new development.

The buyer steps into a completed work just as its surroundings begin to evolve, benefiting from a multi-million dollar infrastructure transformation without enduring the years of construction.

This is not speculation. It is the natural progression of the area.





A Cultural **RECORD**

Before the Dreamer Estate was completed, **Robert Stone's work was already part of the cultural conversation.** His properties have been validated not by the real estate market, but by the arbiters of art, fashion, and design.

Vogue Italia - Roberto Cavalli campaign, photographed by Steven Klein

Saint Laurent - Campaign featuring Travis Scott

Wallpaper* - Top 25 Houses of 2025

Architectural Digest

Elle Decor

Robb Report

Mansion Global

Palm Springs Life

AIA Top Honor Award (2013) - Acido Dorado and Rosa Muerta

Palm Springs Life Fashion Edition - March 2026

Palm Desert Food & Wine Festival Celebrity Chef Reception - March 2026



Architect *Robert Stone*

The background features a white architectural floor plan on a red field. A diagonal line from the top-left to the bottom-right divides the image. To the left of this line, there are three horizontal bands: a cyan semi-circle, a black semi-circle, an orange band, and a blue triangle. The text 'The ORCHESTRATION' is centered horizontally, with 'The' in a white serif font and 'ORCHESTRATION' in a large, bold, white sans-serif font.

The
ORCHESTRATION

Most properties are sold. A rare few are **orchestrated**.

Home by Simon exists to close the Sovereignty Gap - the space between possessing a property and inhabiting a life. We close it through three integrated divisions:

Concepts

Orchestrating everything required to create a sense of home.

Realty

Finding and positioning architectural properties. The Dreamer Estate is one expression of this philosophy.

Family Offices

Strategic orchestration for globally mobile families.

Every engagement is governed by our proprietary A-DVF Framework and our methodology: **Aspire. Design. Dwell.**

Location: 38850 Kelley Lane, Rancho Mirage, California

Architect: Robert Stone

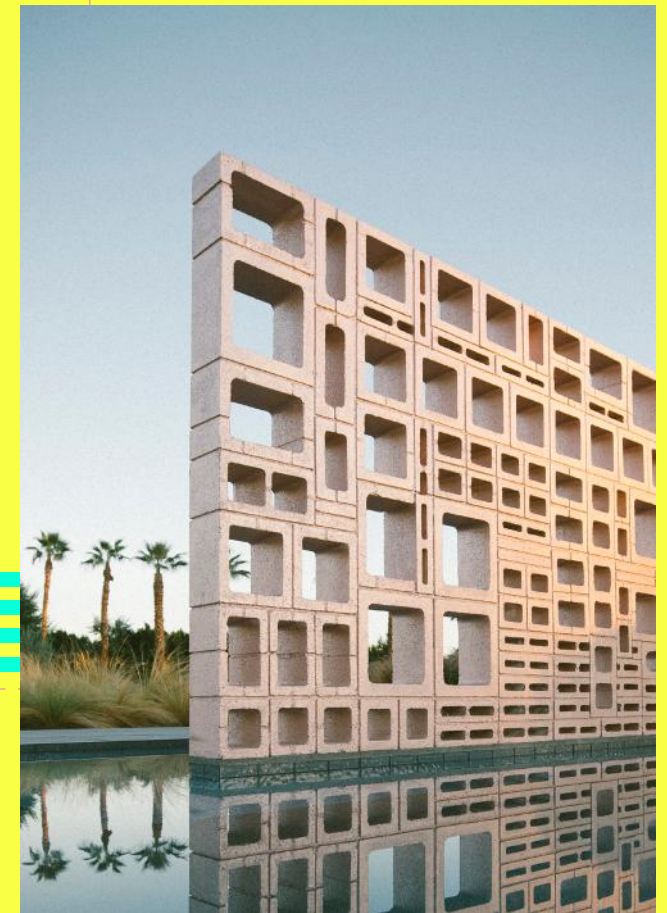
Year Completed: 2024

Lot Size: 3.83 Acres

Structures: Dreamer (Main) and Lil' Dreamer (Guest)

Total Living Area: 4,029 sqft

Total Bedrooms/Bathrooms: 5 Bedrooms, 4.5 Bathrooms





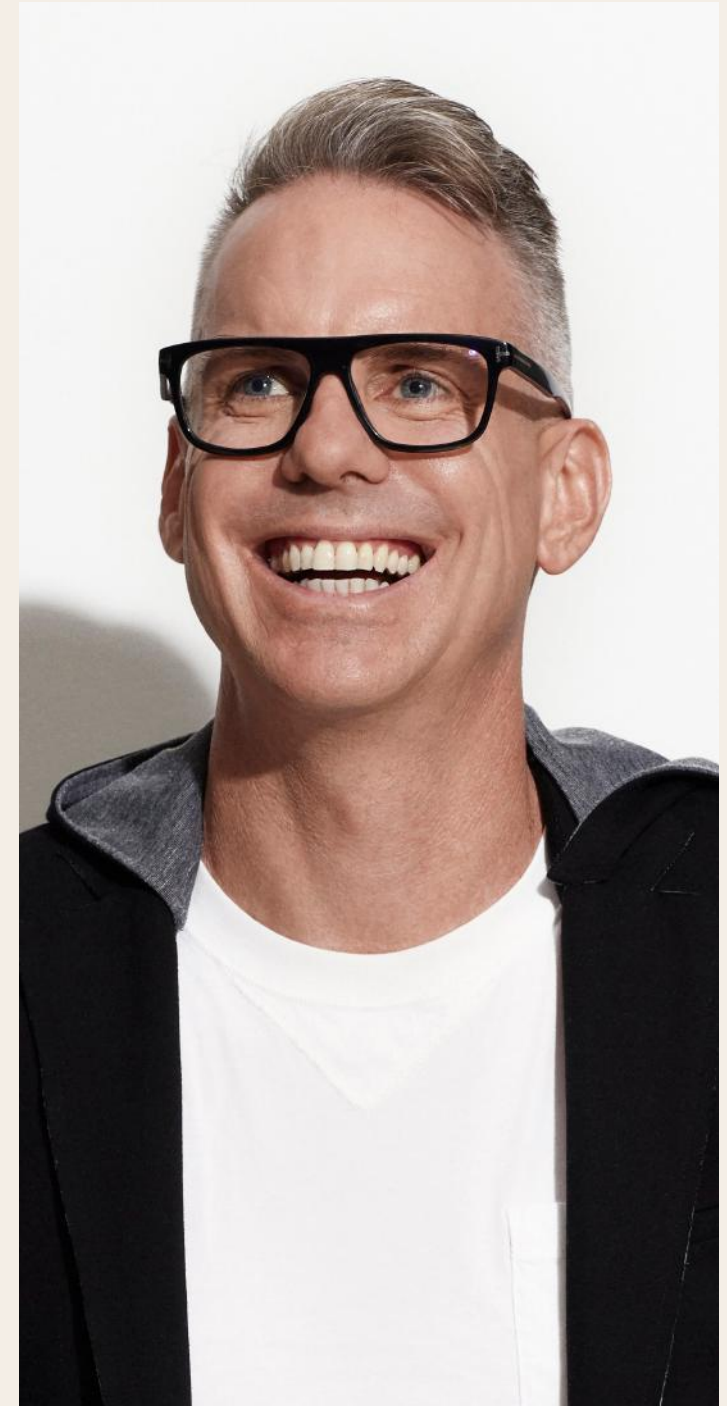
The Acquisition

To acquire a work by an artist like Robert Stone is to recognize a pattern before the market does.

His earlier works are now cultural landmarks. His name is already being mentioned in the same breath as the modernist masters who defined California architecture.

The cultural indicators are all present.

The opportunity to acquire the Dreamer Estate - the synthesis of his thirty-year journey - exists now. It is an opportunity for the collector who understands that the most significant assets are not just owned, but understood.



To begin the conversation, please contact:

Simon Court

Founder / Principal Curator
Home by Simon

DRE #02254734

simon@homebysimon.co
+1 (424) 333.8606

homebysimon.co



kw COACHELLA VALLEY
KELLERWILLIAMS.





Simon Court is the founder and principal of Home by Simon. Home by Simon: Realty offers real estate brokerage services exclusively through his license (DRE #02254734) with KW Coachella Valley. Home by Simon: Concepts provides lifestyle and design orchestration services. Home by Simon: Family Offices provides strategic orchestration for globally mobile families. Concepts and Family Offices are separate businesses and are not affiliated with, nor endorsed by, KW Coachella Valley. Each Keller Williams office is independently owned and operated. KW Coachella Valley.

Copyright © 2026 Home By Simon.

All rights reserved. No part of this book may be reproduced, distributed, or transmitted in any form or by any means, including photocopying, recording, or other electronic or mechanical methods, without the prior written permission of the publisher, except in the case of brief quotations embodied in critical reviews and certain noncommercial uses permitted by copyright law.

Creative Direction: Long Tran

Photography: Yong W Kim, Lance Gerber

Architect: Robert Stone

Staging: Interior Illusions

**HOME
BY SIMON.**

kw COACHELLA VALLEY
KELLERWILLIAMS

Each Keller Williams office is independently owned and operated.



CK
KELLEY



HOME BY SIMON.