



LIVE AN **ACTIVE** URBAN LIFE

Achieve varying life goals at Victoria Sports Tower, the Philippines' first indoor sports-themed residential development. Enjoy seamless accessibility and mobility with its strategic location along EDSA, Metro Manila's biggest thoroughfare and the GMA Kamuning MRT Station.

 **READY FOR
OCCUPANCY**



Artist's Perspective

TABLE OF CONTENTS

1 - 2

Project Profile

15 - 16

Basketball Court

3 - 4

Typical unit - Floor Plan

17 - 18

Swimming Pool

5 - 6

Typical Unit - Photos

19 - 20

Fitness Gym

7 - 8

Combined Unit - Floor Plan

21 - 22

Table Tennis

9 - 10

Combined Unit - Photos

23 - 24

Tennis

11 - 12

Residential Floor Plan

25 - 26

Bowling

13 - 14

Victoria Sports Club

27 - 28

MMA

29 - 30

Boxing

43 - 44

Deluxe Queen

31 - 32

Billiards

45 - 46

Standard Queen

33 - 34

Club Lounge UG

47 - 48

Map

35 - 36

Grand Ballroom 10F

37 - 38

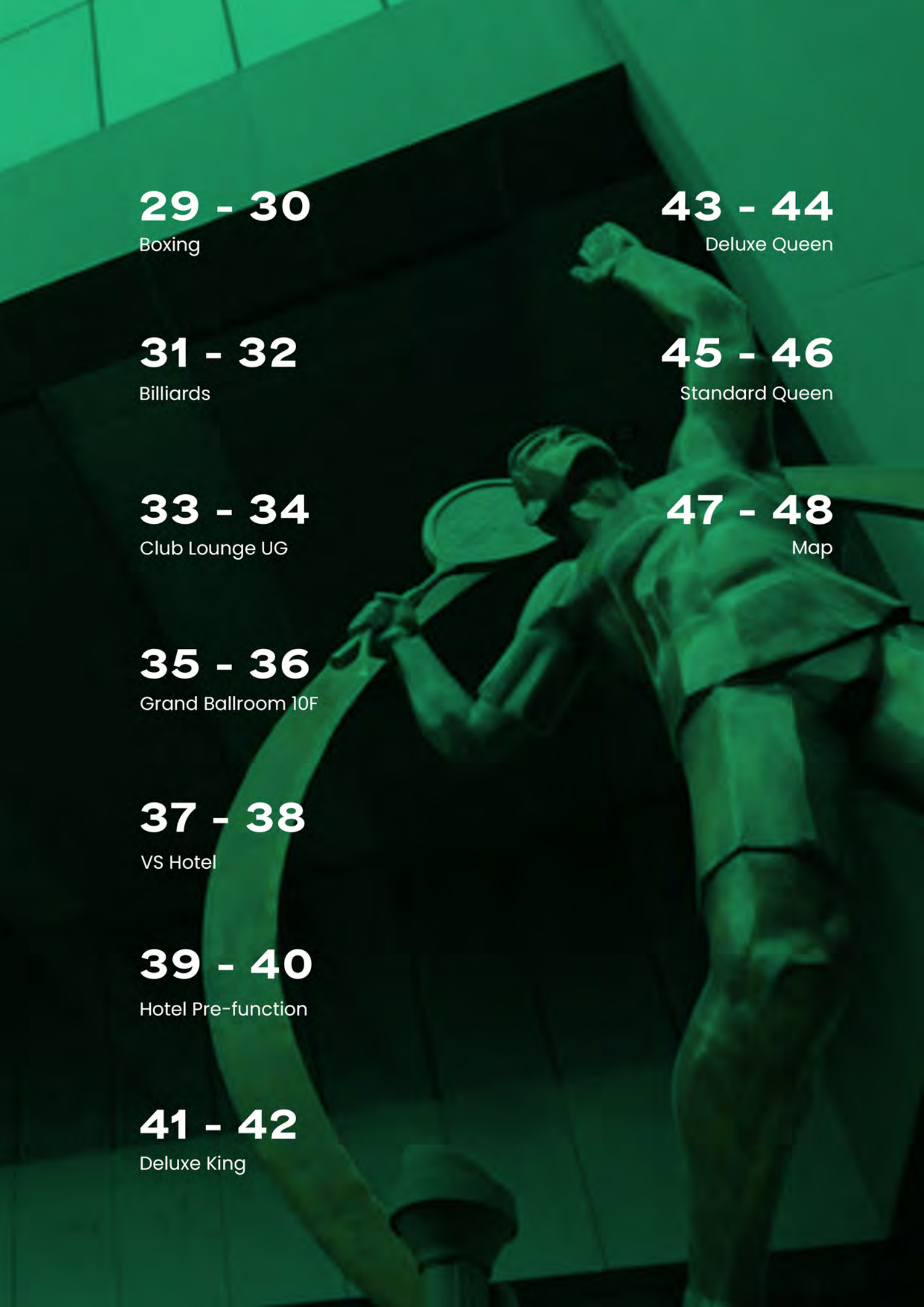
VS Hotel

39 - 40

Hotel Pre-function

41 - 42

Deluxe King



ABOUT THE PROJECT

Achieve varying life goals at Victoria Sports Tower, the Philippines' first indoor sports-themed residential development. Enjoy seamless accessibility and mobility with its strategic location along EDSA, Metro Manila's biggest thoroughfare and near the GMA Kamuning MRT Station.

Whether you're aiming to break a sweat or simply enjoy an active day with family and friends, Victoria Sports Tower Station 2 offers something for everyone. With a playful atmosphere and a commitment to health and wellness, it's more than just a sports facility—it's a place to connect, compete, and have a blast!

Become a part of the community where fun meets fitness, and let the games begin!

₱4.5M to ₱7.1M Approximately

Artist's perspective

Floor Level
Lowest basement level to roof deck level



61 LEVELS

Number of Towers



2

Number of
Residential Levels



36

PROJECT PROFILE

Project name:
Victoria Sports Tower Station 2

Project location:
Edsa, Quezon City

Stage:
RFO

Project type:
Vertical

Building type:
Mixed-use commercial and residential

6 Number of
Elevators

3 Commercial
Levels

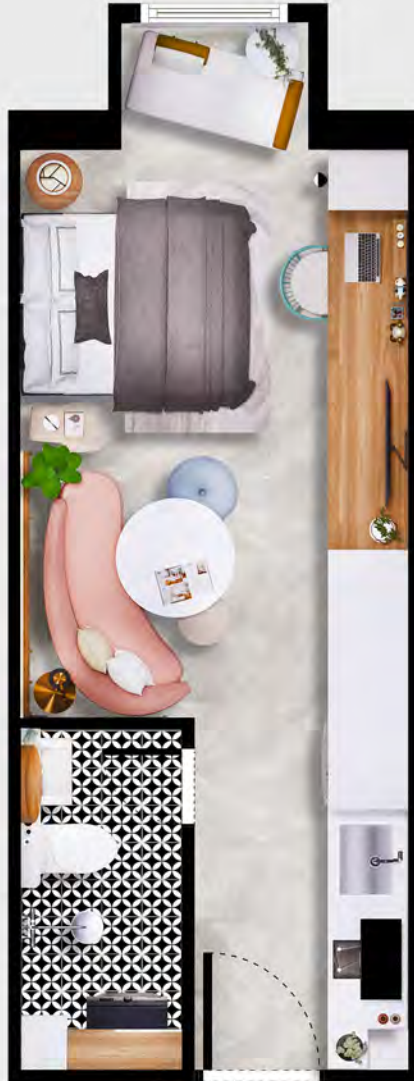
4 Number of
Parking Levels

3,828 Total Number of
Residential Units



Floor levels at basement :	5 (LG, Basement 1 To Basement 4)17
Floor levels at podium :	10
Commercial levels :	3
Residential levels :	33 + Penthouse
Parking levels at basement :	5 (LG, Basement 1 To Basement 4)

Mlqu Parking :	15
Commercial Parking :	490
Residential Parking :	525
Area Of Commercial Space (Sqm) :	COMM'L + SPORTS + HOTEL = 27,197.43
Area Of Residential Space (Sqm) :	93,628.85



Artist's perspective

TYPICAL UNIT

With a unit tailored for sports enthusiasts, you can truly live life in motion. Your home will be your sanctuary and your training ground – a perfect blend for the sporty spirit! Embrace the playful side of living in a dynamic space made just for you.



23.09
SQM

APPROXIMATELY



Artist's perspective



Artist's perspective



Artist's perspective



Artist's perspective

COMBINED UNIT



Transform your sporting experience with our triple combined unit for sports, designed to bring together the best of fitness and fun.



46.18
SQM

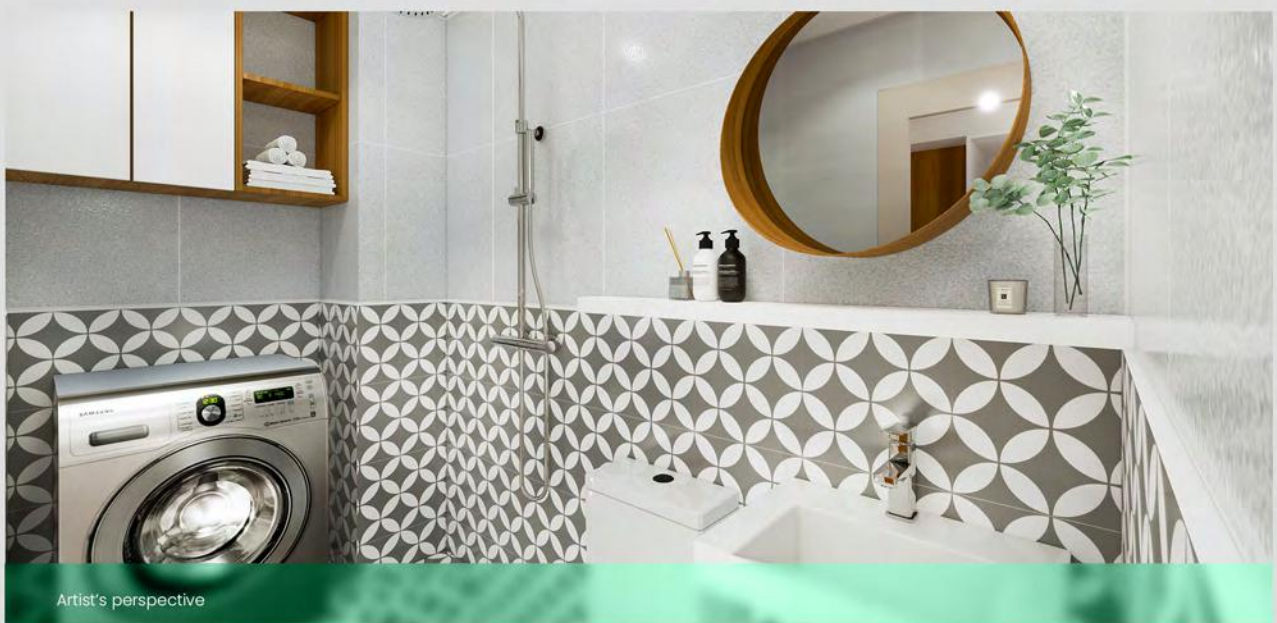
APPROXIMATELY



Artist's perspective



Artist's perspective



Artist's perspective

RESIDENTIAL FLOOR PLAN

LEGEND

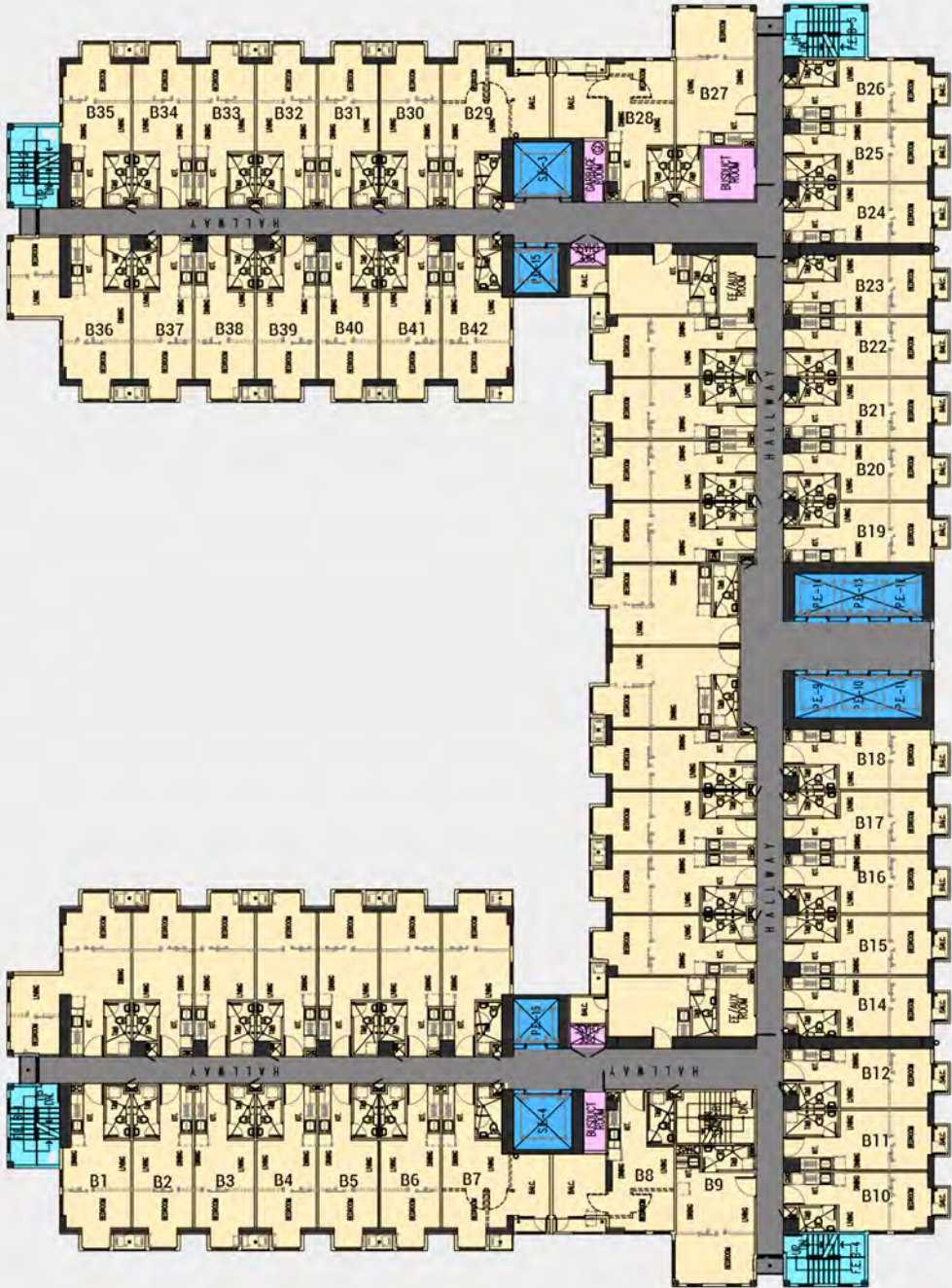
- Typical Units

Elevators

Fire Exits

Utilities

TOWER B
SAMAR AVENUE



FACING TIMOG AVENUE

12h - 45th

Floor Plan

FACING QUEZON AVENUE



TOWER A
FACING EDSA



VICTORIA SPORTS CLUB

MEMBERSHIP

YOUR FITNESS AND WELLNESS JOURNEY BEGINS HERE

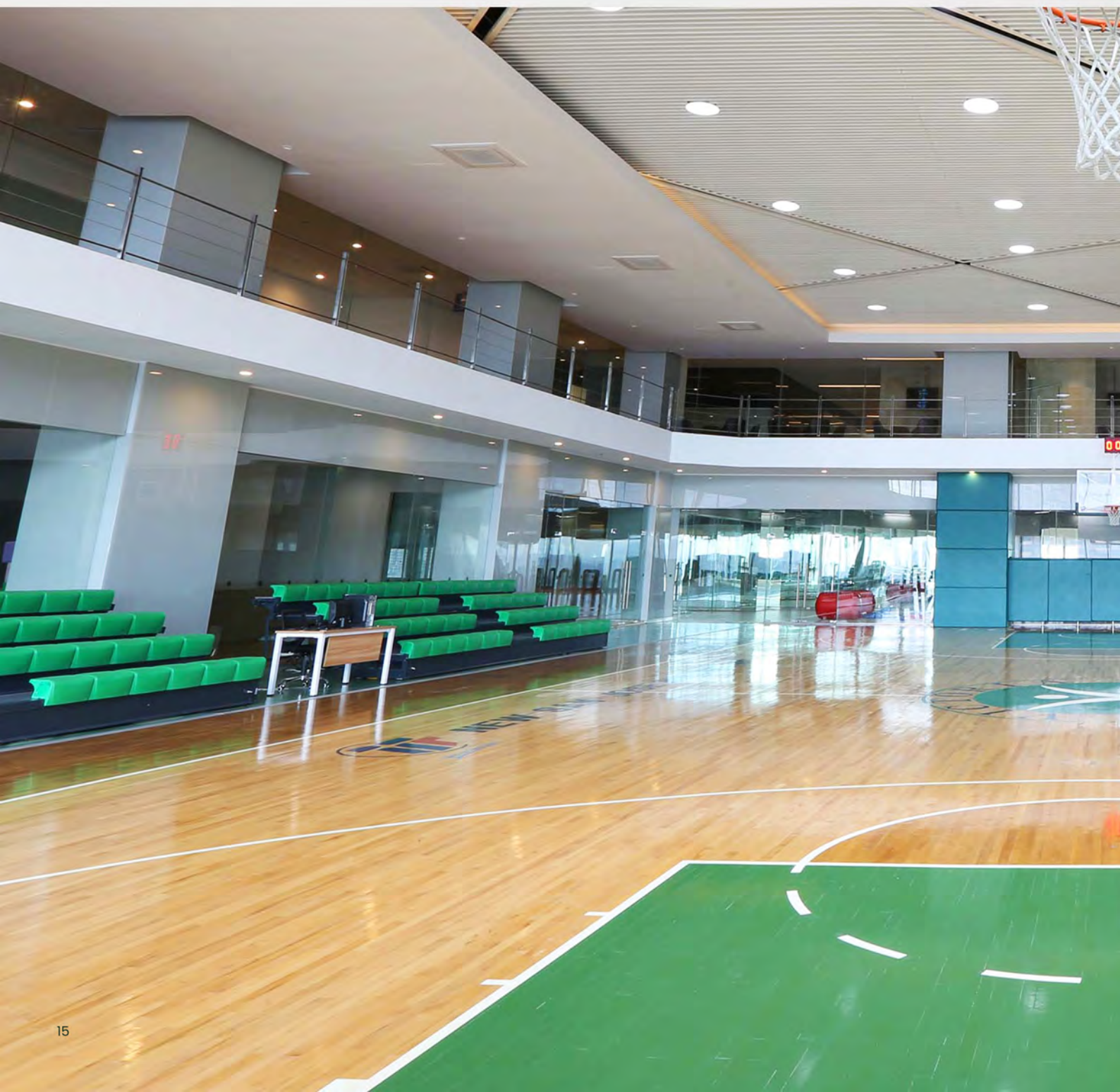
Our space offers you access to a multitude of sports facilities and state-of-the-art fitness equipment to cater to your active lifestyle. Whether you want to spend a night bonding with your family, relax in our water spa pools, play a game of tennis or join studio classes, we've got you covered.



VICTORIA SPORTS CLUB

BASKETBALL COURT

Actual Photo



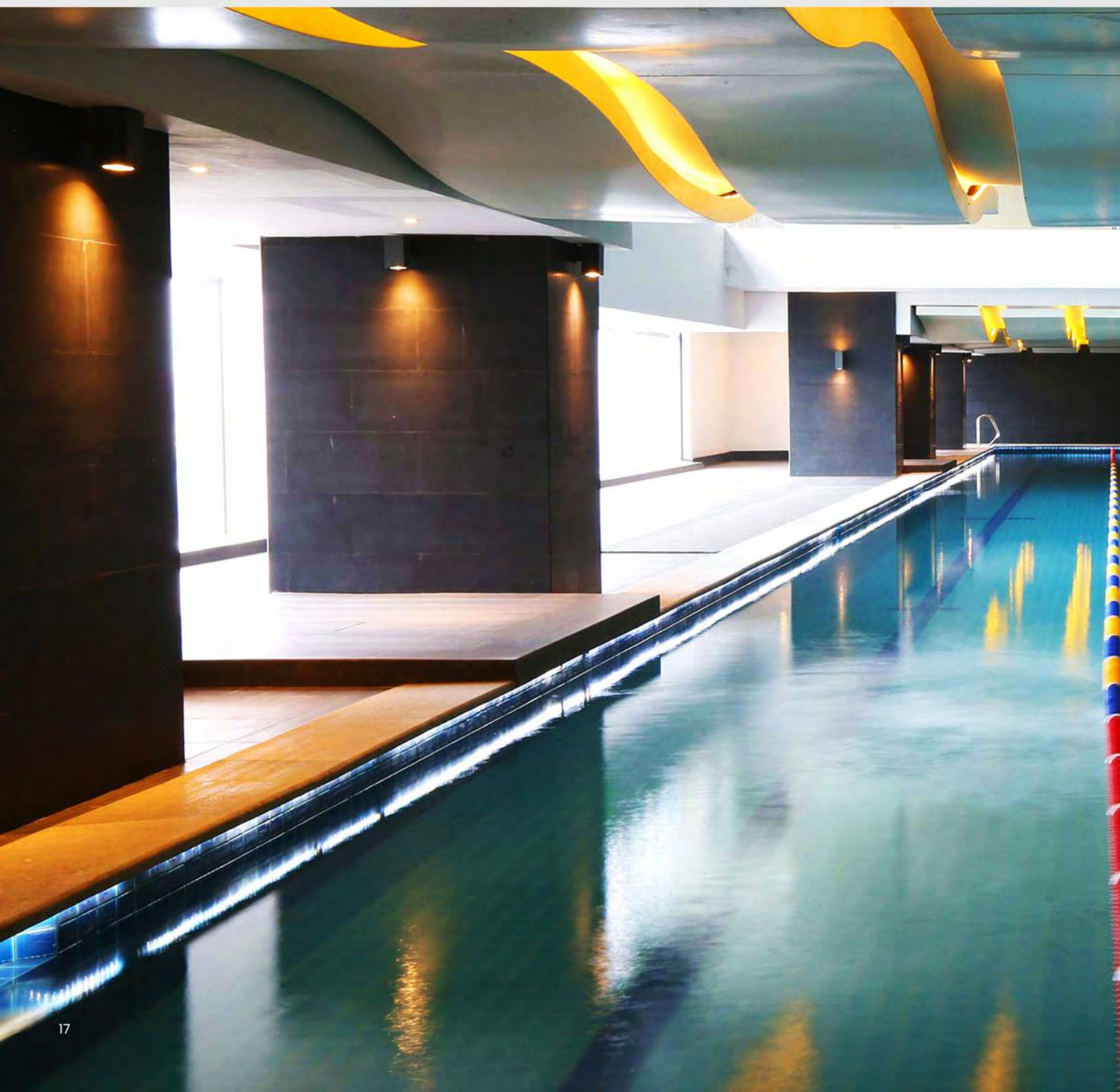




VICTORIA SPORTS CLUB

SWIMMING POOL

Actual Photo





MEMBERSHIP





VICTORIA SPORTS CLUB

FITNESS GYM

Actual Photo





MEMBERSHIP





VICTORIA SPORTS CLUB

TABLE TENNIS

Actual Photo





MEMBERSHIP





VICTORIA SPORTS CLUB

TENNIS

Actual Photo





MEMBERSHIP

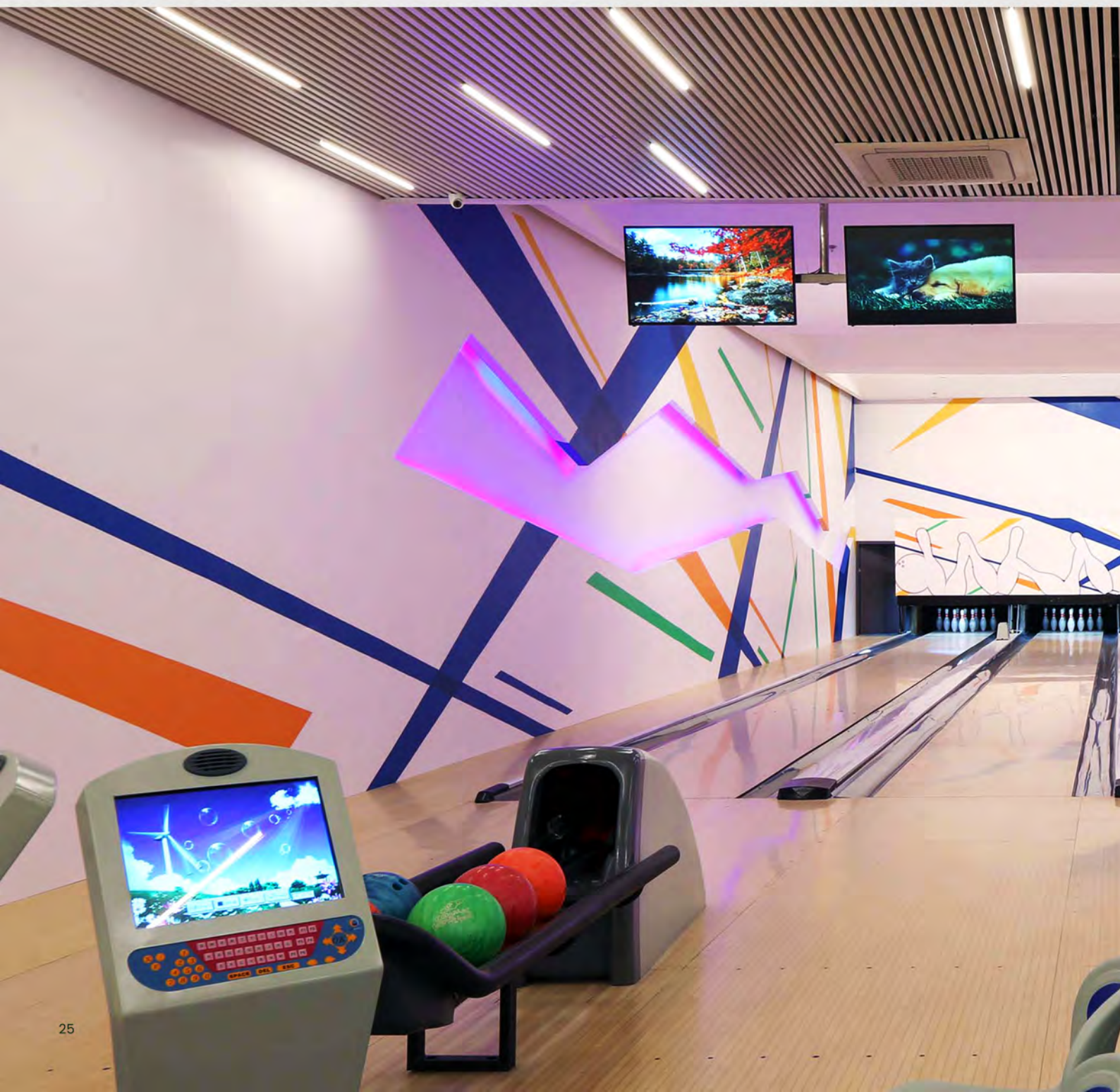




VICTORIA SPORTS CLUB

BOWLING

Actual Photo







VICTORIA SPORTS CLUB

MMA

Actual Photo





MEMBERSHIP





VICTORIA SPORTS CLUB

BOXING

Actual Photo





MEMBERSHIP





VICTORIA SPORTS CLUB

BILLIARDS

Actual Photo





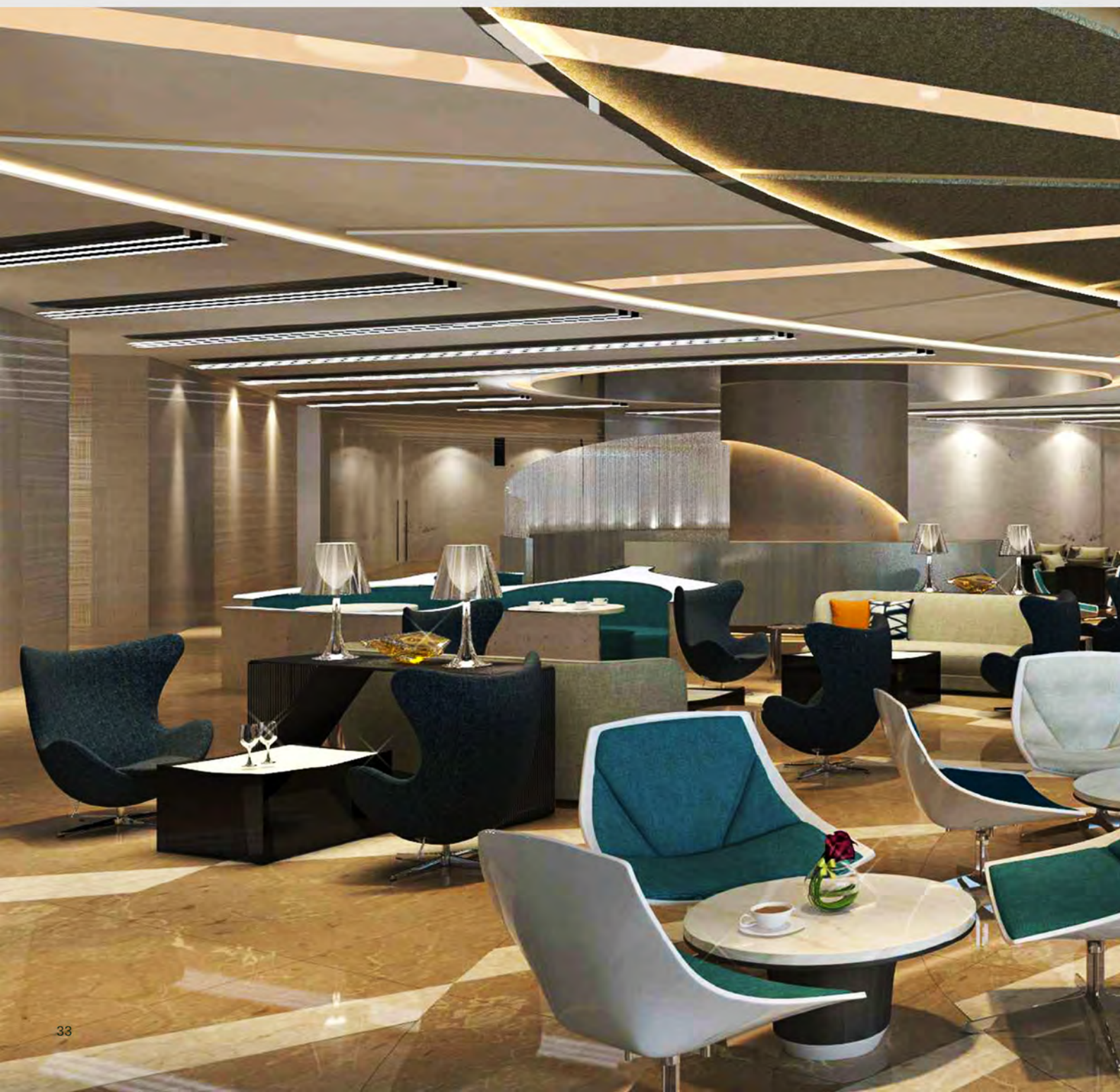


VICTORIA SPORTS CLUB

CLUB LOUNGE UG

Throw your biggest party of VS Hotel's Club lounge and party like no other. Its modern interiors compliment the classy and chill vibe of the spot located at the Upper Ground Floor of Victoria Sports Tower 2.

Artist Illustration





MEMBERSHIP





VICTORIA SPORTS CLUB

GRAND BALLROOM 10F

Enjoy the breathtaking view from the 10th floor of the VS Tower with a sophisticated venue and a complete event set-up of your choice.

Artist Illustration





MEMBERSHIP





VS HOTEL
CONVENTION CENTER

WORK, PLAY, AND STAY IN ONE

Welcome to a world where work, play, and relaxation seamlessly blend into one unforgettable experience! At New San Jose Builders, we believe that your hotel stay shouldn't be just a pit stop—it should be a mini-adventure. Imagine this: you roll out of bed in a plush hotel room with views that dance in the morning light, ready to tackle your workday.

Our work amenities are designed with you in mind—a cozy co-working space that's more fun than the office, super-fast Wi-Fi that knows no limits, and comfy nooks that inspire creativity. But wait, there's more! Just beyond your desk, there's a trove of entertainment waiting for you.

Actual Photo





Actual Photo



PRE-FUNCTION AREA

Reception/Check-In: Guests can register, check-in, or pick up name tags before the main event begins.

Waiting Area: Provides a space for guests to gather, socialize, or wait before doors open.

Cocktail Hour/Networking: Often used for informal mingling, drinks, or hors d'oeuvres before a formal event.

Exhibit/Display Space: Can host sponsor booths, product displays, promotional tables, or informational materials.

Overflow Space: Useful if the main room is at capacity or if guests arrive early.



VS HOTEL
CONVENTION CENTER

Artist Illustration





Artist Illustration





Artist's perspective

DELUXE KING

Whether you're here for a romantic getaway, a business trip, or just to treat yourself, the Deluxe King room is your private sanctuary. Come and experience the ultimate blend of comfort and style!



VS HOTEL
CONVENTION CENTER





Artist's perspective

DELUXE QUEEN

Welcome to your serene getaway in our Deluxe Queen Hotel Room, where comfort meets style in the most delightful way! Step inside and be embraced by a soothing ambiance, complemented by plush, elegant furnishings.



VS HOTEL
CONVENTION CENTER



Artist's perspective



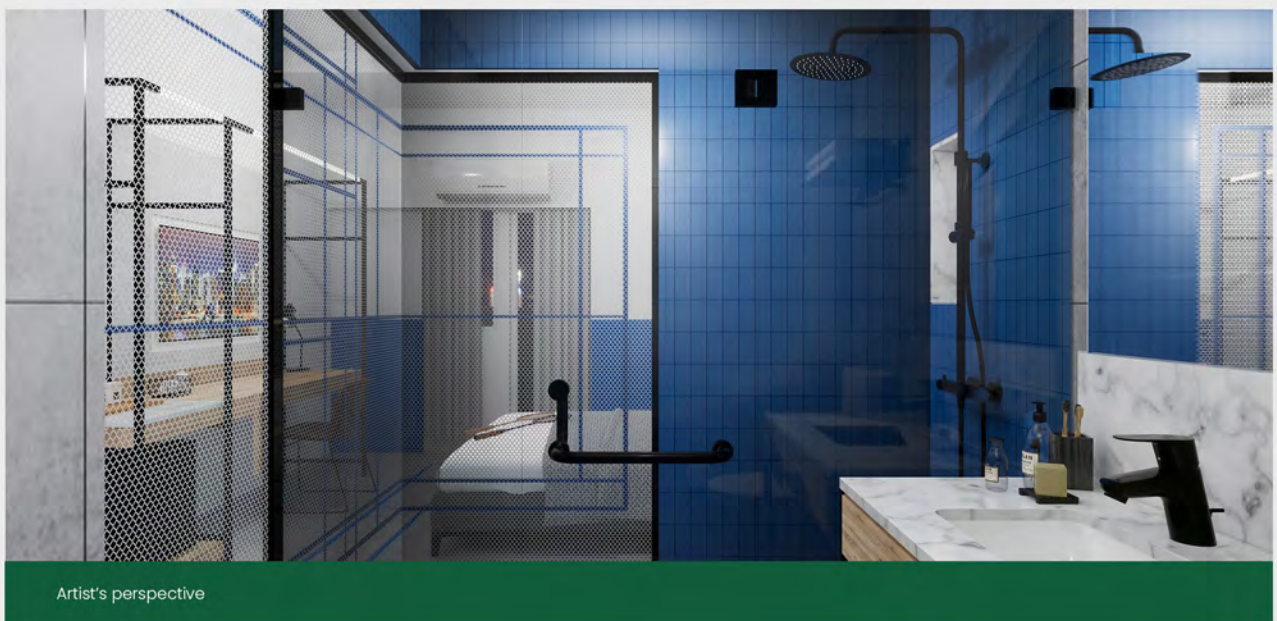
Artist's perspective

STANDARD QUEEN

Step into a space filled with warm tones and playful accents that set just the right mood for relaxation. Each room is equipped with modern amenities including a flat-screen TV, complimentary Wi-Fi, and a mini-fridge to keep your snacks cool and your drinks cold!



VS HOTEL
CONVENTION CENTER



LOCATION MAP

Achieve varying life goals at Victoria Sports Tower, the Philippines' first indoor sports-themed residential development. Enjoy seamless accessibility and mobility with its strategic location along EDSA, Metro Manila's biggest thoroughfare and the GMA Kamuning MRT Station.

NEARBY ESTABLISHMENTS



SCHOOLS

1	St. Paul College	3.4 km
2	University of the Philippines - Diliman	5 km
3	Ateneo De Manila University	5 km
4	Miriam College	5 km



MALLS

5	SM NORTH EDSA	3 Km
6	Trinoma	2.8 Km
7	Gateway Mall	2.4 Km



GOVERNMENT OFFICES

8	SSS	2 km
9	GSIS	3 km
10	Quezon City Hall	2.5 km
11	Land Transportation Office	2 km
12	Pag-Ibig EDSA	900m



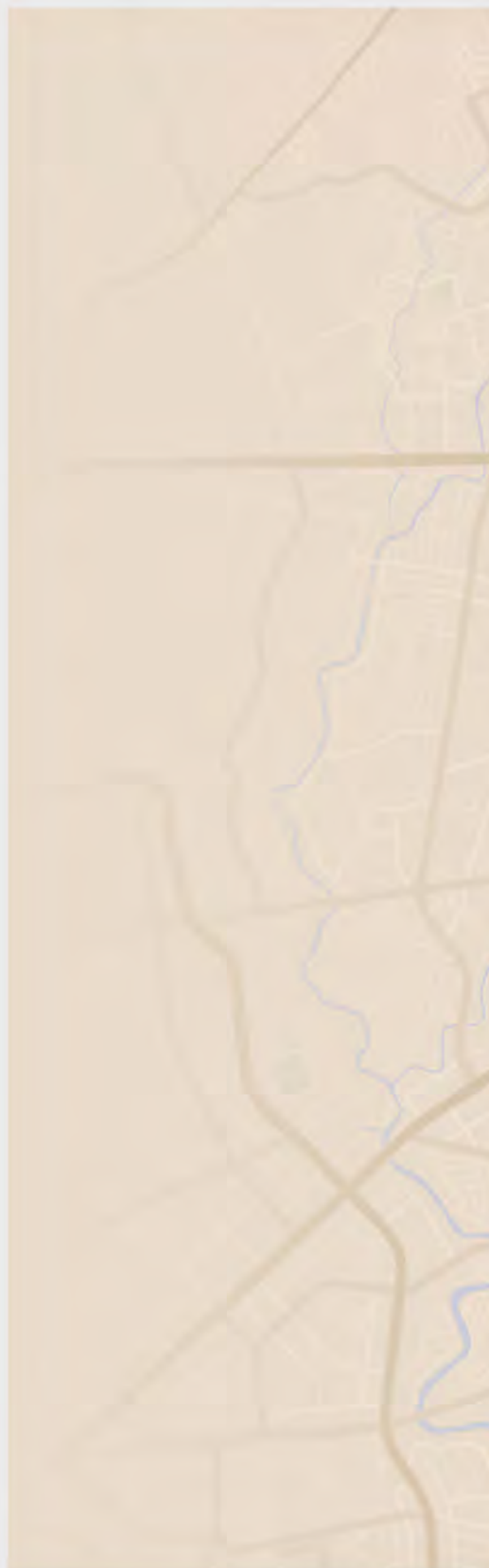
TV STATIONS:

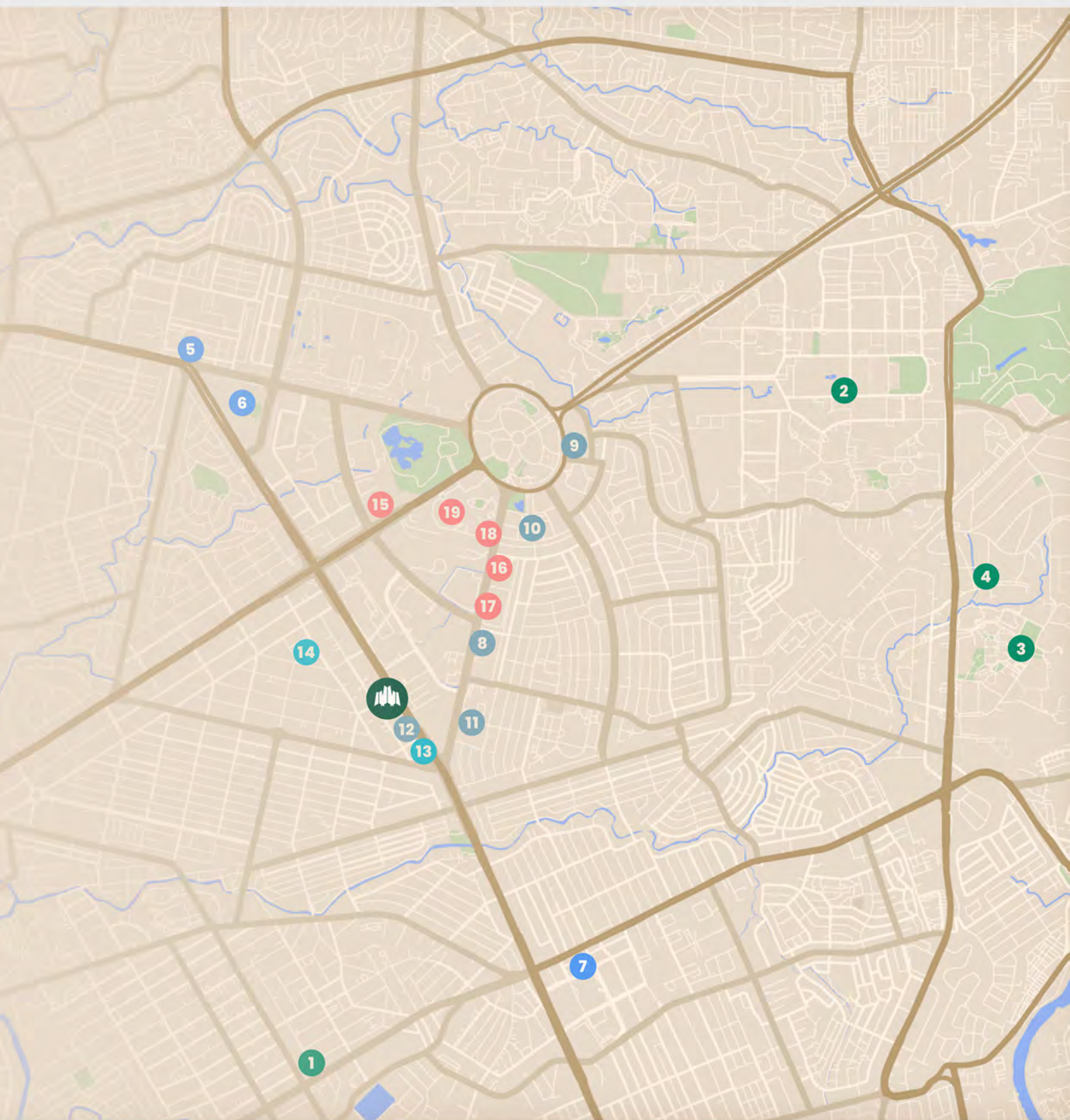
13	GMA 7	800 m
14	ABS-CBN	1 km



HOSPITALS:

15	Philippine Childrens Medical Center	2 km
16	Philippine Heart Center	2 km
17	East Avenue Medical Center	2 km
18	National Kidney and Transplant Institute	2 km
19	Lung Center of the Philippines	2 km





A PROJECT OF:



New San Jose Builders, Inc.



GET IN TOUCH

info@nsjbi.com.ph

We will help you make your dream a reality

OFFICE

Victoria Towers, Panay Avenue
corner Timog Avenue
Quezon City, 1128 Metro Manila

HELP

(02) 8442 7777
+63 917 800 2206

FOLLOW US

[newsan joseofficial](#)
[newsan josebuildersofficial](#)
[newsan josebuildersofficial](#)

WEBSITE:

www.nsjbi.com



DEVELOPER:

New San Jose Builders, Inc.

DHSUD NCR

AA-2025/01-4786

OWNER:

Diamond Land Resources, Inc.

DHSUD LS No.

029973

DATE COMPLETED:

December 31, 2018

