

# 2026 PORTAGE LA PRAIRIE *City Guide*

JANUARY  
TO JUNE



Photo credit: Al Foster Southern Chiefs Organization

**Prairie Unity Pow Wow**

**City Hall Accessibility Project  
Now Complete**

**McKay Avenue Park Project**

**Portage**  **la Prairie**  
*City of Possibilities*

# TABLE OF Contents

## MESSAGES

- 3 Message from Mayor Sharilyn Knox

## FEATURES

- 7 Pre-Authorized Payment Options for Taxes & Utilities  
8-11 Prairie Unity Pow Wow  
22-23 McKay Avenue Park Project  
26-27 City Hall Accessibility Project Now Complete

## CITY NEWS AND MORE

- 4 City Facility Hours  
5 City Council List  
6 Taxes and Utility Rates  
12-13 Snow Clearing: What to Know  
14-15 City Shines Bright with New Lighting  
16-19 Garbage and Recycling  
20-21 Down the Drain  
24-25 Update on the City's Traffic By-law  
28 Portage Regional Recreation Authority (PRRA)  
29 Portage la Prairie Regional Landfill  
30 Fort la Reine Museum  
31-32 Strategic Plan: Top 5 Initiatives  
33 Portage Regional Economic Development (PRED)  
34 Portage la Prairie Regional Library  
35 Koko Platz Recreation Club Now Completed  
36 Events Around Town

## ON THE COVER

Cover image credit: Al Foster, Southern Chiefs Organization



Published for the  
**CITY OF PORTAGE LA PRAIRIE**  
97 Saskatchewan Avenue E.  
Portage la Prairie, MB R1N 0L8  
204-239-8309

[www.city-plap.com](http://www.city-plap.com)  
Facebook: [www.facebook.com/cityplap/](https://www.facebook.com/cityplap/)  
Twitter: [x.com/CityofPortage](https://twitter.com/CityofPortage)  
Instagram: [www.instagram.com/cityofportagelaprairie](https://www.instagram.com/cityofportagelaprairie)

Published by  
**DEL COMMUNICATIONS INC.**  
Suite 300, 6 Roslyn Road, Winnipeg, MB R3L 0G5  
204-254-6418  
[www.delcommunications.com](http://www.delcommunications.com)

President and CEO  
**DAVID LANGSTAFF**  
[david@delcommunications.com](mailto:david@delcommunications.com)

Editor  
**LISA KOPOCHINSKI**  
431-277-6261  
[Lisakop@sbcglobal.net](mailto:Lisakop@sbcglobal.net)  
[www.LisaKCommunications.net](http://www.LisaKCommunications.net)

Director of Sales & Marketing  
**DAYNA OULION**  
[dayna@delcommunications.com](mailto:dayna@delcommunications.com)

Production services provided by:  
**Raven Creative Design**

Layout & Design  
**KIM LACEY**

©DEL Communications Inc. – All rights reserved.  
Contents may not be reproduced by any means,  
in whole or in part, without the prior written  
permission of the publisher.

Publications mail agreement #40934510  
Return undeliverable address to:  
DEL Communications Inc.  
Suite 300, 6 Roslyn Road, Winnipeg, MB R3L 0G5

While every effort has been made to ensure the  
accuracy of the information contained herein and  
the reliability of the source, the publisher in no way  
guarantees nor warrants the information and is not  
responsible for errors, omissions or statements made  
by advertisers. Opinions and recommendations made  
by contributors or advertisers are not necessarily those  
of the publisher, its directors, officers or employees.

PRINTED IN CANADA 01/2026





## MESSAGE FROM Mayor Sharilyn Knox

Dear Residents of Portage la Prairie,

As we enter a new year, I've been thinking a lot about how the words we use shape the way we see ourselves and our community. Just like people, cities have a kind of "self-talk."

Every time we speak about our community, we add to that inner voice. If we only focus on what's wrong, we start to see those flaws everywhere. It's a bit like looking in a mirror and only noticing what we don't like.

Over time, that reflection can start to feel like the whole truth, even when it's not. But when we choose to notice the good, to speak about what's strong and what's improving, that reflection changes. We begin to see the beauty, the resilience, and the potential that's been there all along.

Portage la Prairie is no different. We have challenges. Yes, every community does. But we also have incredible momentum, caring people, and an energy that comes from believing in ourselves and in each other. When we shift our focus from criticism to collaboration, from what's missing to what's possible, we build the kind of positive environment that allows real change to happen.

I often hear from people who have lived here their whole lives and feel frustrated with what they think hasn't changed or has changed too much. I understand that feeling; it comes from caring deeply. But I also believe that if we want Portage to thrive, we must start by speaking about it with the same kind of encouragement we would give a child who's learning something new. You wouldn't tell a child they'll never get it right. You'd cheer them on, notice their progress, and help them grow. Our community deserves that same patience and pride.

There's so much to celebrate in Portage la Prairie. New families and businesses are choosing our city because

they see its potential. We're expanding recreation opportunities, strengthening partnerships, and improving infrastructure. The opening of our new Regional Health Centre marks an exciting step forward in community well-being. And we continue to honour our diversity, creating spaces that welcome everyone to connect, learn, and belong. These are the signs of a thriving community, one that's growing with purpose and optimism.

**"We have challenges.  
Yes, every community does.  
But we also have incredible momentum."**

But positivity isn't about pretending everything is perfect. It's about recognizing that our words have power. It's about choosing to see the good so that we have the energy and optimism to tackle the rest. When we speak with hope, others start to listen differently. When we celebrate what's working, we inspire more people to get involved in making things even better.

As we step into this new year, let's be mindful of the story we're telling about our city. Let's be proud of where we live, encourage one another, and keep finding ways to make Portage la Prairie a place that reflects the best in all of us.

So, here's my challenge to you. The next time someone asks how things are in Portage, answer with pride. Share something positive, a local success, a kind neighbour, a moment that made you smile. Together, let's start a ripple of optimism that reminds us all how much there is to love about this place we call home.

**—Mayor Sharilyn Knox**

# CITY FACILITY HOURS

City Hall is open to the public Monday through Friday from 9:00 a.m. to 4:30 p.m., excluding statutory holidays. Visitors should enter and exit through the east front doors.

The Operations Department is open to the public Monday to Friday between 8:30 a.m. and 4:30 p.m., with a lunch closure from 12:00 to 1:00 p.m. It is recommended to call ahead at (204) 239-8346.

The Fire Department is always accessible in the event of an emergency. For general inquiries, please contact them by phone at (204) 239-8340 or by email at [firehall@city-plap.com](mailto:firehall@city-plap.com). Their office hours for non-emergency matters are Monday to Friday, 8:30 a.m. to 4:30 p.m. They are closed for lunch from 12:00 to 1:00 p.m.

For all other inquiries, call the general line at (204) 239-8309 or visit the City's website.

## CONTACT INFORMATION

[www.city-plap.com](http://www.city-plap.com)

Facebook: [www.facebook.com/cityplap/](https://www.facebook.com/cityplap/)

Twitter: [x.com/cityofportage](https://twitter.com/cityofportage)

Instagram:

[www.instagram.com/cityofportageprairie.com](https://www.instagram.com/cityofportageprairie.com)

### CITY HALL

97 Saskatchewan Avenue East

Portage la Prairie, MB R1N 0L8

T: 204-239-8309 • F: 204-239-1532

Monday to Friday: 9:00 a.m. - 4:30 p.m.

After-hours emergency: 204-239-8340

Email: [info@city-plap.com](mailto:info@city-plap.com)

Operations Department: 204-239-8346

Water On/Off & Invoices: 204-239-8370

Property Tax Clerk: 204-239-8308

Animal Control/Bylaw Enforcement:  
204-239-8326

Planning District: 204-239-8345

RCMP: 204-857-4445

EMERGENCY: 9-1-1

## UPCOMING 2026 OFFICE CLOSURES

January 1 - New Year's Eve Day

February 16 - Louis Riel Day

April 3 - Good Friday

April 6 - Easter Monday

May 18 - Victoria Day

July 1 - Canada Day

August 3 - Terry Fox Day

September 7 - Labour Day

September 30 - National Day for  
Truth and Reconciliation

October 12 - Thanksgiving Day

November 11 - Remembrance Day

December 25 - Christmas Day

December 28 - In Lieu of Boxing Day

### YOUTH MEMBER OF COUNCIL

City Council sees value in having a Youth Member of Council in order to build interest and knowledge of municipal government in today's youth. Youth members are selected at the beginning of each school year and remain until the last meeting of Council in the following August.



The Youth Member of Council for the 2025-2026 term is Efeomo Odeh.

For more information on the Youth Member of Council position, contact the Manager of Administration at (204) 239-8337 or [info@city-plap.com](mailto:info@city-plap.com).

### 2026 SCHEDULE OF COUNCIL MEETINGS

Monday, January 12, 2026  
Monday, January 26, 2026  
Monday, February 9, 2026  
Monday, February 23, 2026  
Tuesday, March 10, 2026  
Monday, March 23, 2026  
Monday, April 13, 2026  
Monday, April 27, 2026  
Monday, May 11, 2026  
Monday, May 25, 2026  
Monday, June 8, 2026

Monday, June 22, 2026  
Monday, July 13, 2026  
Monday, August 10, 2026  
Tuesday, September 8, 2026  
(Labour Day)  
Monday, September 28, 2026  
Tuesday, October 13, 2026  
(Thanksgiving)  
Monday, October 26, 2026  
Monday, November 9, 2026  
Monday, December 14, 2026

Council and Committee meetings are held at City Hall Council Chambers unless advertised otherwise and are open to the public.

Meetings can also be live-streamed or watched after the fact on the City of Portage la Prairie YouTube channel. Meetings are scheduled for 6:00pm unless posted otherwise.

Council meetings can also be watched on cable television. Check your channel guide for the Rogers community channel.

The morning after each meeting, Mayor Sharilyn Knox provides a video recap of the Council meeting, which can be viewed on the City's Facebook page, and a member of Council provides a summary of the meeting on the local radio stations.

### DELEGATIONS TO COUNCIL

Persons wishing to present information to or make a request to City Council may do so by appearing as a delegation. To register as a delegation, please fill out the registration form and submit it no later than the Wednesday prior to Council to the Manager of Administration.

Delegation registration forms can be submitted online, in person at City Hall or via email to [info@city-plap.com](mailto:info@city-plap.com).

Link: <https://forms.city-plap.com/Register-as-a-Delegation>

### INVITATIONS TO COUNCIL

Each year, the Mayor and members of City Council attend many special events, ceremonies, and celebrations throughout the City.

If you would like to invite the Mayor or Council to an event, please submit using the online request form.

Link: <https://forms.city-plap.com/Invitation-to-Council>

# CITY COUNCIL



**MAYOR SHARILYN KNOX** [sknox@city-plap.com](mailto:sknox@city-plap.com)

*"As we step into a new year and the final year of this term, my focus is clear: finish strong, stay grounded in our goals, and continue building a city where people feel safe, supported, and proud to call Portage home. Every decision we make this year must move us closer to a community that thrives, today and for the generations coming after us."*

**Chairperson:** Portage Regional Recreation Authority. **Member:** Finance, Legislative & Property Committee, City Planning & Economic Development Committee, Public Safety Committee, Waterworks Committee, Transportation Committee, Community Services Committee. **Representative:** Budget Committee, City Manager's Evaluation, Emergency Control Group, Tax Sharing Committee, Queen Elizabeth Scholarship Committee, RCMP Community Consultative Committee.



**COUNCILLOR COLIN DOYLE** [cdoyle@city-plap.com](mailto:cdoyle@city-plap.com)

*"What I love about public safety is that it is a topic that is always top of mind, so I always get to have engaging conversations with our community."*

**Chairperson:** Public Safety Committee. **Second:** Community Services Committee. **Director:** Portage Regional Recreation Authority, Portage Regional Economic Development, Regional Landfill Authority. **Representative:** Budget Committee, City Manager's Evaluation, Emergency Control Group, Tax Sharing Committee, RCMP Community Consultative Committee.



**COUNCILLOR RYAN ESPEY** [respey@city-plap.com](mailto:respey@city-plap.com)

*"I believe that the Community Services Committee plays a vital role in enhancing the well-being and quality of life for residents through its initiatives and support systems."*

**Chairperson:** Community Services Committee. **Second:** Transportation Committee. **Director:** Portage la Prairie Planning District Board, Portage Regional Landfill Authority. **Representative:** Budget Committee, City Manager's Evaluation, Emergency Control Group, Board of Revision, Tax Sharing Committee.



**COUNCILLOR JOE MASI** [jmasi@city-plap.com](mailto:jmasi@city-plap.com)

*"I enjoy being Chair of Finance because it provides me with a great overall insight into the financial health and issues facing the City of Portage la Prairie."*

**Chairperson:** Finance, Legislative & Property Committee, Portage Regional Healthcare Foundation. **Second:** Public Safety Committee. **Director:** Portage la Prairie Planning District, Regional Library Board. **Representative:** Budget Committee, City Manager's Evaluation, Emergency Control Group, Tax Sharing Committee, Chamber of Commerce, Community Economic Development Initiative.



**COUNCILLOR PRESTON MEIER** [pmeier@city-plap.com](mailto:pmeier@city-plap.com)

*"I enjoy doing my part in making economic development a primary focus for our city, in order to create a diverse, inclusive, welcoming community with opportunities for all."*

**Chairperson:** City Planning & Economic Development Committee, Board of Revision. **Second:** Finance, Legislative & Property Committee. **Director:** Portage Regional Economic Development. **Representative:** Budget Committee, City Manager's Evaluation, Emergency Control Group, Tax Sharing Committee, Suta Kachicha.



**COUNCILLOR FARON NICHOLLS** [fnicholls@city-plap.com](mailto:fnicholls@city-plap.com)

*"Waterworks provides our city/area with residential and industrial water, and also water pollution control services. I am very proud to serve and support our committed staff within my portfolio."*

**Chairperson:** Waterworks Committee. **Second:** City Planning & Economic Development Committee. **Director:** Portage Regional Recreation Authority, Portage Regional Economic Development. **Representative:** Budget Committee, City Manager's Evaluation, Emergency Control Group, Tax Sharing Committee, Heartland Community Futures, Fort la Reine Museum.



**COUNCILLOR TERRIE PORTER** [tporter@city-plap.com](mailto:tporter@city-plap.com)

*"My favourite part of being the Chair of Transportation is that when a plan comes together, I see firsthand all the different components simultaneously working together to create a community that will reap the benefits and foster community pride for years to come."*

**Chairperson:** Transportation Committee. **Second:** Waterworks Committee. **Director:** Portage la Prairie Planning District Board, Portage Regional Landfill Authority. **Representative:** Budget Committee, City Manager's Evaluation, Emergency Control Group, Board of Revision, Tax Sharing Committee.

# Taxes and utility rates



## 2026 PROPERTY TAXES

2026 Property Tax Statements will be mailed out in June. If you do not receive a copy of your Property Tax Statement, please contact us at (204) 239-8308. Taxes are due by 4:30 pm on July 31, 2026.

## HOW TO PAY TAX OR UTILITY BILLS

To avoid waiting in line, we offer a variety of payment options.

Please note electronic payments take 3 to 5 days to process. To avoid penalty, allow sufficient time for your payment to be received by the City on or before the due date. Penalties will be applied to current year taxes beginning on August 1, 2026, at a rate of 1.25% per month.

- **Online Banking:** set up through your financial institution, allow 3 to 5 days to process.
- **Telpay:** [www.telpay.ca](http://www.telpay.ca)
- **Mail:** cheque or money order made payable to City of Portage la Prairie, 97 Saskatchewan Avenue East, Portage la Prairie, MB, R1N 0L8. Cheques and money orders must be received at City Hall by 4:30 p.m. on the due date.
- **Post-Dated Cheque:** cheque must be dated and received at City Hall by 4:30 p.m. on the due date.
- **After Hours:** a night deposit box is located on the east front door of City Hall.
- **E-Transfer:** send to [payments@city-plap.com](mailto:payments@city-plap.com). Include the roll number in the message field.
- **Credit Card:** online only through Pay Simply at [www.paysimply.ca](http://www.paysimply.ca). Fees of 2.5% apply, allow 3 to 5 days to process.
- **In Person:** at City Hall Monday to Friday between 9:00 a.m. and 4:30 p.m.

- **TIPP:** Properties set up on the preauthorized payment program will continue to have payments withdrawn monthly as scheduled.
- **Prepayment:** Taxes may be prepaid up to 90% of the previous year's net tax levy. Payments made prior to June 30, 2026 may be eligible for a discount.

## TAX INSTALLMENT PAYMENT PLAN - T.I.P.P.

Pay your property taxes in 12 easy monthly installments on the 15th of each month beginning January 15th, 2026.

You can join TIPP if:

- Your tax account is not in arrears.
- You have chequing privileges at a financial institution (bank, trust company, treasury branch or credit union).
- Your taxes are not presently paid through a mortgage company (P.I.T.).
- Your application is received prior to December 15, 2025 or the application is received prior to June 30, 2026 with an initial payment of the missed installments paid at the time of application.

Complete the TIPP application found on the City's Website, visit City Hall, or call (204) 239-8308 for more information.

## ALARM PERMITS

Alarm permits are required for alarm systems installed in any residential or commercial building. There is no charge for this permit. Contact City Hall at 204-239-8309 or [officeclerk@city-plap.com](mailto:officeclerk@city-plap.com) for more information. If you currently have a permit, please ensure that all information is current by calling City Hall at (204) 239-8309.



# Pre-Authorized Payment Options for Taxes & Utilities

The City of Portage la Prairie offers three convenient payment programs to help you stay on track with your utility and property tax bills. There are no added fees from the City, you will still receive your regular bill, and you may cancel or update at any time with 30 days' notice.

**TO ENROLL:** Fill out an application, attach a void cheque, and submit it to City Hall. Your account must be in good standing with no recent NSF cheques. Application forms are available online or at City Hall.

## 1. UTILITY BILLS - PRE-AUTHORIZED PAYMENT PLAN

With this plan, your utility bill is automatically withdrawn from your bank account every quarter on the due date.

Questions? Call **204-239-8370**  
or email [utilityclerk@city-plap.com](mailto:utilityclerk@city-plap.com)

## 2. UTILITY BUDGET PLAN

With this plan, your utility costs are spread evenly over the year based on your previous usage. These accounts are reconciled annually, and payments amounts adjusted if needed.

Questions? Call **204-239-8370**  
or email [utilityclerk@city-plap.com](mailto:utilityclerk@city-plap.com)

## BUSINESS LICENSE

Anyone operating a business—whether ongoing, occasional, or one-time—must obtain a business license from the City of Portage la Prairie. However, businesses operating from a commercially taxed property within the city are exempt from this requirement.

For details, visit  
[www.city-plap.com](http://www.city-plap.com)  
or call 204-239-8310.



## 3. PROPERTY TAXES - TAX INSTALLMENT PAYMENT PLAN (TIPP)

This program lets you pay your annual property taxes through monthly automatic withdrawals.

Apply by **December 15** to start in January. You can also join later (up to June 30) with an initial payment for missed installments. Complete the TIPP application on the City Website at <https://forms.city-plap.com/Tax-Installment-Payment-Plan> or visit City Hall.

Questions? Call **204-239-8308**  
or email [taxclerk@city-plap.com](mailto:taxclerk@city-plap.com)

## PET LICENSES

City residents must register their pets each year. Pet licenses for 2026 are free if registered between January



1- March 31. Proof of a current rabies vaccination is required. After March 31, the cost to register a spayed/neutered dog or cat is \$25 and a non-spayed or intact dog or cat is \$60. All dogs and cats over the age of six months must have a pet license. The penalty for failing to obtain a valid pet license is \$100.

### Ways to register:

- In Person: At City Hall, 97 Saskatchewan Ave. E. between 9:00 am – 4:30 pm.
- Online: Complete the online pet license application form and upload a copy of your pet's current rabies vaccination papers.
- Drop Box: Print and complete the pet license application form from our website, include proof of vaccination, and drop it in the City Hall front-door drop box.
- Mail: Send all documents to City Hall, Attention: Pet Licensing, 97 Saskatchewan Ave. E., Portage la Prairie, Manitoba, R1N 0L8.

For more information, call (204) 239-8310 or email [financeclerk@city-plap.com](mailto:financeclerk@city-plap.com).



Grand Entry

Photo credit: Al Foster, Southern Chiefs Organization

# Prairie Unity Pow Wow - Celebrating Culture, Community, and Collaboration

Portage la Prairie shone in a truly special way in December.

The Prairie Unity Pow Wow was more than just a weekend event. It was a celebration of connection, culture, and community, a moment where Indigenous and non-Indigenous communities joined hearts and hands. From the first beat of the drum to the final song, the Pow Wow showcased what can happen when relationships are nurtured with care, respect, and good intention.

Held at Stride Place from December

19th to 21st, the Prairie Unity Pow Wow welcomed dancers, drum groups, vendors, elders, youth, families, and visitors from across Manitoba, Saskatchewan, Alberta, Ontario, British Columbia, and all over the United States.

## THE STORY OF PRAIRIE UNITY

Collaboration for the event began when the City of Portage la Prairie, Long Plain First Nation, and Dakota Plains Wahpeton Nation entered a partnership through the Community Economic Development

Initiative (CEDI), which is geared toward strengthening community connections and supporting sustainable economic development. When the CEDI committee considered possible projects to collaborate on, a Pow Wow was an obvious choice to all three parties involved. The committee's vision was clear: to bring people together through culture, learning, and respect. From the start, the goal was to host an event that welcomed everyone while honoring Indigenous teachings, ceremonies,





Grand Entry

and traditions. For some, it was a first pow wow experience; for others, it continued lifelong traditions. Either way, Prairie Unity reminded everyone that culture has the power to unite, educate, and inspire.

### **CULTURAL IMPORTANCE AND MEANING**

Pow Wows are much more than performances, they are ceremonies, celebrations, and moments of healing. The Grand Entries, competitive categories, show-stopping specials, drums, regalia, and protocols, all carry deep meaning. Visitors received clear guidance to participate respectfully, whether standing for honour songs, understanding etiquette, or learning

about the significance of each dance. Every step, beat, and movement contributed to the richness of the experience.

### **ECONOMIC IMPACT FOR PORTAGE LA PRAIRIE**

Alongside its cultural significance, the Pow Wow provided an economic boost for Portage la Prairie and the surrounding region.

Hundreds of attendees joined the weekend's festivities, including dancers, drum groups, vendors, and visitors from near and far. Local hotels, restaurants, retailers, and gas stations saw increased activity, while local vendors and artisans benefited from direct sales and exposure. Prairie Unity demonstrated

how cultural events can strengthen community pride while supporting local businesses and the regional economy. The event truly "put the unity in community."

Mayor Knox notes that the event has laid the groundwork for future collaboration. "The possibilities are endless for us because we are creating the ability to move forward in a good way with our partners. We know it's important for future generations in our community. The Prairie Unity Pow wow has started that."

### **GRATITUDE FOR OUR SPONSORS**

The Prairie Unity Pow Wow was made possible thanks to the



generosity of many local corporate sponsors, regional organizations, and community partners. Their belief in the power of culture, connection, and community helped make the event accessible, welcoming, and impactful. The planning committee is deeply grateful for their contributions to making the event a success.

## MEDIA ATTENTION AND COMMUNITY PRIDE

The Pow Wow received coverage from local, regional, and provincial

media, highlighting its spirit of unity, cultural significance, and the way it brought the community together. This attention showcased Portage la Prairie as a city that values culture, welcomes visitors, and celebrates meaningful collaboration.

## STAYING CONNECTED

Prairie Unity continues to live on through shared stories, photos, and community connections. See our social media for glimpses of the Pow Wow magic, and updates on possible future events:

- Facebook: [@PrairieUnityPowWow](#)
- Instagram: [@PrairieUnityPowWow](#)
- TikTok: [@prairieunitypowwow](#)

## MOVING FORWARD, TOGETHER

The Prairie Unity Pow Wow left a lasting impact on Portage la Prairie. It showed what is possible when communities and neighbours work together with respect, openness, and shared purpose. Unity is not a one-time event; it is a continuous journey. Together, we move forward - stronger, connected, and united.



Photo credit: Folkedge Photography



Grand Entry



The Planning Committee (from left to right) includes Sara Longclaws, Long Plain First Nation; Ryan Espey, Dakota Plains Wahpeton Nation; Terry Francis, Long Plain First Nation; Eve O'Leary, Portage Regional Economic Development; Hannah Enns, CEDI; Diane Van Aert, City of Portage la Prairie; Ashley Ozunko, Dakota Plains Wahpeton Nation; Ralph Francis, Long Plain First Nation; Callie McArthur, Portage Regional Economic Development; Nicole Chychota, City of Portage la Prairie; and Derek Meeches, Long Plain First Nation. Missing from the photo is Joan Smoke, Dakota Plains Wahpeton Nation





Golden Age

Photo Credit: Gayle Loewen



Tiny Tots

Photo Credit: Gayle Loewen



Photo credit: Folkedge Photography



Youth

Photo Credit: Gayle Loewen



Head Man Maurice Meeches and Head Woman Sophia Smoke

Photo Credit: Al Foster, Southern Chiefs Organization



# SNOW CLEARING: WHAT TO KNOW



When we get a significant snowfall event our first priority is always to clean the main roads that provide access to our hospitals, schools, and essential services. Once those are clear we will move on to secondary and residential areas the day prior to garbage collection.

## ROUTINE SNOW CLEARING

Routine snow clearing takes place the day prior to garbage collection when snow accumulation has met set standards.

By-law No. 25-8784 states: “From November 1 to April 30 of each year, parking on streets shall be limited for routine snow clearing. During this period, no person shall park a vehicle on any portion of a street on the business day prior to residential garbage collection for that street until such time as the employees or contractors acting on behalf of the municipality have completed snow clearing for the said street.”

Parking in violation of the By-law is subject to a fine. City crews work as fast as possible

## SNOW CLEARING

“From November 1 to April 30, vehicles cannot be parked on any part of the street on the business day before your residential garbage collection day. This replaces the previous rule that restricted parking the day after garbage pickup.

This change gives snow-clearing crews the space they need to clear streets before waste bins line the curb. If there is no accumulation, streets will not be cleared, and normal parking routines can continue.”

to remove snow from the streets, but parked cars can get in our way. If we have to tow some vehicles to make winter driving safe for everyone, we will, but we would rather not. So please, to avoid having your car towed, do not park on the street during snow-clearing operations.

## DRIVEWAY SNOW CLEARING

Snow being blown, shoveled, or pushed onto city streets is not permitted. All residents should adhere to City of Portage la Prairie Traffic By-Law No. 25-8784 which states: “It shall be an offence for any person to remove from any private property, public property, street, boulevard or sidewalk any snow or ice and deposit same on any street, boulevard, parking lot, public place, or sidewalk in such a manner that could negatively impact drainage, or create a hazardous condition for either vehicular or pedestrian traffic, or otherwise impede the snow removal efforts of the City or Manitoba Infrastructure and Transportation.”

## SIDEWALK SNOW CLEARING

### Reminder to Business Owner/Operators

By-Law No. 25-8784 states: “Before 10:00 a.m. each day, following every fall of snow, hail or rain which shall have frozen on the sidewalk, or after a fall of snow or ice off any building, cause the same to be removed entirely off the sidewalk fronting or abutting the premises and in the event the ice or snow shall be so frozen that removal would damage the sidewalks,



**PRIORITY STREETS FOR SNOW CLEARING**

NOTE:  
The following City facilities are also considered priority:

- Water Treatment Plant
- Water Pollution Control Facility
- Fire Hall / RCMP
- Centennial Arena

**As well, your vehicle could be towed to the nearest cleared street.**

## BETTER DRIVING FOR ALL

**We want to react to snowfall and clear the streets quickly. With the streets clear, roads will be less congested, and drivers will be able to reach their destination easily and safely. By listening for messages and watching for the signs, you'll be ensuring trouble-free, easy winter driving for everyone.**

**For more information about snow clearing,  
please call the Operations Department  
at (204) 239-8346.**

Portage la Prairie City Guide • January-June 2026 13

# City Shines Bright with New Lighting

Portage la Prairie is glowing brighter than ever this season, thanks to new lighting installations across the city. These enhancements not only bring festive cheer but also improve safety and create a welcoming atmosphere year-round.

## CITY HALL ILLUMINATED

We're thrilled to announce the addition of new permanent architectural lighting at City Hall, a beautiful addition that will shine all year long. This project was designed to highlight the building's historic beauty while allowing for seasonal color changes. These lights will help us recognize special events, celebrate community moments, and bring a little extra shimmer and glow to our historic building and downtown.

Eight fixtures now illuminate the east side, two brighten the north entrance, and four additional lights accent the building's peaks. The sconce covers were carefully chosen to match the antique bronze of the windows, while the peak fixtures blend seamlessly with the limestone exterior. This thoughtful approach ensures the lighting enhances the building without detracting from its architecture.



The lights will typically shine white but will change colors to celebrate seasons, local events, and awareness campaigns. Coordinated with the causeway lighting, City Hall now stands as a centerpiece of downtown illumination.

## HOLIDAY AVENUE PARTNERSHIP

The City also partnered with the Holiday Avenue Project to extend festive lighting to other key areas. At Vopni Park, lights were added to trees along the east and west sides, completing the park's tree-scape and enhancing both beauty and safety. Prairie Fusion Arts & Entertainment and the Portage la Prairie Regional Library now feature illuminated trees, bringing warmth and visibility to this busy corner. Along Royal Road, eleven shooting star decorations have been installed on hydro poles, creating a consistent and inviting streetscape that complements surrounding areas.

The Holiday Avenue Project spearheaded the concept and purchased the lights, while the City handled installation and will maintain them year-round. Beyond their festive appeal, these lights serve a dual purpose, beautification and public safety, bringing light and life to our community after dark.

We invite residents and visitors alike to take a stroll and experience these beautiful displays. Whether you're admiring the elegant glow of City Hall or the sparkling stars along Royal Road, these lights are here to brighten our city and celebrate the spirit of community all year long.





# Too Much Garbage? Curbside Recycle!

The City of Portage la Prairie occasionally hears from residents that their garbage cart doesn't hold all their waste. In most cases, these households aren't using curbside recycling, a service that can greatly reduce what goes into the garbage cart.

Much of your household packaging waste is recyclable through the City's curbside program, far beyond just pop cans and water bottles! Recyclables are collected bi-weekly from single and multi-family dwellings on your regular garbage day.

Recycling is voluntary but strongly encouraged. All recyclable material must be placed in a designated recycling bin, with a maximum of four boxes permitted per single-family dwelling.

When recyclables go in bins instead of garbage bags, there's usually enough space for true waste to fit in the City-issued cart with the lid closed.

Portage & District Recycling provides one regular-sized blue recycling bin free of charge to each household. Residents can also use blue or clear bags for recycling and place them at the curb. Recycling helps conserve natural resources, reduce landfill waste, and minimize pollution by limiting the need for new materials, key steps toward a sustainable future for generations to come.

To learn more about what is accepted in curbside recycling, visit the Portage & District Recycling website at <https://www.recycleallyoucan.ca/what-can-i-recycle/>

## What is accepted in curbside recycling?



**Newspaper**  
(flyers, envelopes, take-out food bags)



**Egg cartons** (not Styrofoam)



**Telephone Books, Magazine and Catalogues**  
(including glossy paper)



**Office Paper**  
(bond paper, envelopes, kraft paper, etc.)



**Shredded Office Paper**  
(place in clear/blue bags)



**Paper Gift Bags/Non shiny wrapping paper**



**Boxboard**  
(cereal boxes, laundry detergent boxes, toy boxes, shoe boxes, etc.)



**Clean Corrugated Cardboard**



**Aluminum Cans** (pop cans, beer cans, etc.)



**Steel (Tin) Cans** (soup cans, bean cans, tuna cans, etc. - no need to remove labels)



**Glass Jar and Bottles**  
(liquor bottles and glass jars - Please remove all lids)



**Gable top beverage cartons**  
(Milk, milk products, juice cartons & Kool-Aid Jammers)



**Tetra Pak Containers**  
(Beverage containers)



**Coffee Cups & Lids**  
(Tim Horton's/McDonald's)



**Car Seats**  
(cloth & seat belts need to be taken off)



**PET #1 Plastic** (soft drink bottles, some food and personal care product containers)



**HDPE #2 Plastic containers** (milk jugs, Tylenol, Advil, vitamin bottles, some food and personal care products)



**LDPE #4 Plastic** (containers and lids from margarine, yogurt and other food products)



**PP #5 Plastic** (Margarine, yogurt, clean coffee pods, plastic cutlery, prescription pill bottles and other food products)



**#7 Plastic containers** (Ketchup, syrup, margarine containers, straws, etc.)

# GARBAGE & RECYCLING COLLECTION

In 2025, the City of Portage la Prairie introduced a new automated curbside garbage collection service. Each eligible household received a 360-litre black cart at no cost. Garbage is collected weekly, while recycling is picked up every two weeks on alternating weeks. Collection takes place on the front street year-round, and carts should be placed out before 7:00 a.m. on your scheduled day.

To ensure smooth pickup, place your cart with the wheels against the curb without blocking the roadway or bike lanes, and leave at least one metre of space around it. Keep carts clear of vehicles, poles, and fences, and make sure the lid is completely closed - overflowing carts will not be collected.

For schedules, reminders, and service alerts, download the free MWM Environmental app or visit [MWMEnviro.ca](http://MWMEnviro.ca) and enter your address.

## BULKY WASTE COLLECTION

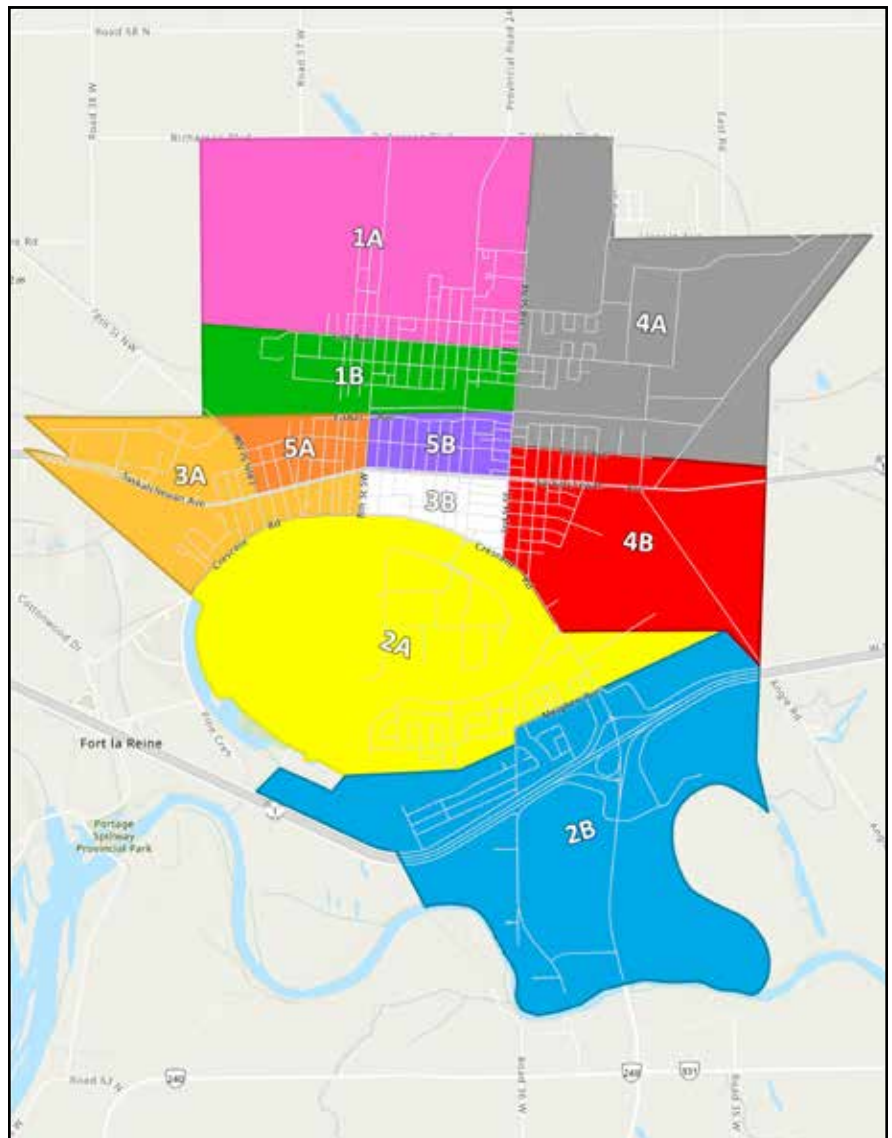
Bulky waste is collected four times a year during designated weeks on your regular collection day. Items must weigh less than 100 pounds; heavier items must be disposed of privately. The 2026 pickup dates are April 20–24, July 13–17, September 21–25, and December 28–January 4.

## RECYCLING & YARD WASTE

Recycling is collected curbside on a bi-weekly basis for single and multi-family dwellings. All recyclables must be placed in a recycling box,

with a maximum of four boxes per household. Yard, garden, and kitchen vegetable waste (excluding tree trimmings) can be dropped off at the compost site at 4th Ave. N.W. and 15th St. N.W. Please empty bags and containers before disposal. Free curbside yard waste collection occurs each spring and fall, with dates advertised in advance.

Tree trimmings can be taken to the Tree Disposal Site behind the Water Pollution Control Facility, east of River Road (PR 240) and south of the by-pass. The site is open daily from 9:00 a.m. to 9:00 p.m. Christmas trees may be placed on the boulevard for pickup between January 2 and 23, 2026.







## Area 1A to 5A

### Solid Waste and Recyclables Collection Schedule - 2026

Solid Waste & Recyclables will be collected on the days blocked on the calendar.

Please have refuse out for collection prior to 7:00 a.m. on the days marked, but no earlier than 8:00 p.m. the day prior.

For inquiries please contact the Operations Dept at 204-239-8346 or email [operations@city-plap.com](mailto:operations@city-plap.com)



**DAY 1**  
**DAY 2**  
**DAY 3**



**DAY 4**  
**DAY 5**

**R - SOLID WASTE/RECYCLABLES  
COLLECTION DAY**

**H - HOLIDAY**

JANUARY						
S	M	T	W	T	F	S
				H	R	3
4	R	R	7	8	9	10
11	12	13	R	R	R	17
18	R	R	21	22	23	24
25	26	27	R	R	R	31

FEBRUARY						
S	M	T	W	T	F	S
1	R	R	4	5	6	7
8	9	10	R	R	R	14
15	H	R	R	19	20	21
22	23	24	25	R	R	28

MARCH						
S	M	T	W	T	F	S
1	R	R	R	5	6	7
8	9	10	11	R	R	14
15	R	R	R	19	20	21
22	23	24	25	R	R	28
29	R	R				

APRIL						
S	M	T	W	T	F	S
			R	2	H	4
5	H	7	8	9	10	11
12	R	R	R	R	R	18
19	20	21	22	23	24	25
26	R	R	R	R		

MAY						
S	M	T	W	T	F	S
					R	2
3	4	5	6	7	8	9
10	R	R	R	R	R	16
17	H	19	20	21	22	23
24	25	R	R	R	R	30
31						

JUNE						
S	M	T	W	T	F	S
	R	2	3	4	5	6
7	8	R	R	R	R	13
14	R	16	17	18	19	20
21	22	R	R	R	R	27
28	R	30				

JULY						
S	M	T	W	T	F	S
			H	2	3	4
5	6	7	R	R	R	11
12	R	R	15	16	17	18
19	20	21	R	R	R	25
26	R	R	29	30	31	

AUGUST						
S	M	T	W	T	F	S
						1
2	H	4	5	R	R	8
9	R	R	R	13	14	15
16	17	18	19	R	R	22
23	R	R	R	27	28	29
30	31					

SEPTEMBER						
S	M	T	W	T	F	S
		1	2	R	R	5
6	H	R	R	R	11	12
13	14	15	16	17	R	19
20	R	R	R	R	25	26
27	28	29	H			

OCTOBER						
S	M	T	W	T	F	S
				1	2	3
4	R	R	R	R	R	10
11	H	13	14	15	16	17
18	19	R	R	R	R	24
25	R	27	28	29	30	31

NOVEMBER						
S	M	T	W	T	F	S
1	2	R	R	R	R	7
8	R	10	H	12	13	14
15	16	17	R	R	R	21
22	R	R	25	26	27	28
29	30					

DECEMBER						
S	M	T	W	T	F	S
		1	R	R	R	5
6	R	R	9	10	11	12
13	14	15	R	R	R	19
20	R	R	23	24	H	26
27	H	29	30	31		



## Area 1B to 5B

### Solid Waste and Recyclables Collection Schedule - 2026

Solid Waste & Recyclables will be collected on the days blocked on the calendar.

Please have refuse out for collection prior to 7:00 a.m. on the days marked, but no earlier than 8:00 p.m. the day prior.

For inquiries please contact the Operations Dept at 204-239-8346 or email [operations@city-plap.com](mailto:operations@city-plap.com)

GREEN  
BLUE  
WHITE

DAY 1  
DAY 2  
DAY 3

RED  
PURPLE

DAY 4  
DAY 5

R - SOLID WASTE/RECYCLABLES  
COLLECTION DAY

H - HOLIDAY

JANUARY						
S	M	T	W	T	F	S
				H	2	3
4	5	6	R	R	R	10
11	R	R	14	15	16	17
18	19	20	R	R	R	24
25	R	R	28	29	30	31

FEBRUARY						
S	M	T	W	T	F	S
1	2	3	R	R	R	7
8	R	R	11	12	13	14
15	H	17	18	R	R	21
22	R	R	R	26	27	28

MARCH						
S	M	T	W	T	F	S
1	2	3	4	R	R	7
8	R	R	R	12	13	14
15	16	17	18	R	R	21
22	R	R	R	26	27	28
29	30	31				

APRIL						
S	M	T	W	T	F	S
			1	R	H	4
5	H	R	R	R	R	11
12	13	14	15	16	17	18
19	R	R	R	R	R	25
26	27	28	29	30		

MAY						
S	M	T	W	T	F	S
					1	2
3	R	R	R	R	R	9
10	11	12	13	14	15	16
17	H	R	R	R	R	23
24	R	26	27	28	29	30
31						

JUNE						
S	M	T	W	T	F	S
	1	R	R	R	R	6
7	R	9	10	11	12	13
14	15	R	R	R	R	20
21	R	23	24	25	26	27
28	29	R				

JULY						
S	M	T	W	T	F	S
			H	R	R	4
5	R	R	8	9	10	11
12	13	14	R	R	R	18
19	R	R	22	23	24	25
26	27	28	R	R	R	

AUGUST						
S	M	T	W	T	F	S
						1
2	H	R	R	6	7	8
9	10	11	12	R	R	15
16	R	R	R	20	21	22
23	24	25	26	R	R	29
30	R					

SEPTEMBER						
S	M	T	W	T	F	S
		R	R	3	4	5
6	H	8	9	10	R	12
13	R	R	R	R	18	19
20	21	22	23	24	R	26
27	R	R	H			

OCTOBER						
S	M	T	W	T	F	S
				R	R	3
4	5	6	7	8	9	10
11	H	R	R	R	R	17
18	R	20	21	22	23	24
25	26	R	R	R	R	31

NOVEMBER						
S	M	T	W	T	F	S
1	R	3	4	5	6	7
8	9	R	H	R	R	14
15	R	R	18	19	20	21
22	23	24	R	R	R	28
29	R					

DECEMBER						
S	M	T	W	T	F	S
		R	2	3	4	5
6	7	8	R	R	R	12
13	R	R	16	17	18	19
20	21	22	R	R	H	26
27	H	R	R	R		

# DOWN THE DRAIN

Protecting Pipes from Everyday Waste

## The Unflushables

Every flush matters. When we send the wrong things down the toilet, we risk damaging our plumbing, polluting our environment, and driving up maintenance costs. This guide is here to help you understand what should and shouldn't be flushed, so we can all do our part to protect our pipes and waterways.

Flushing disposable wipes can cause serious and costly problems for our sewer system and your home. Even if they say they're "flushable", wipes go in the garbage.

### How wipes damage the sewer system

Unlike toilet paper, disposable wipes - even ones labeled "flushable" - don't break down quickly in our sewer system. They can bind with other materials to clog sewers, damage equipment at pump stations, and contribute to sewer overflows into residences and the environment. Put wipes in the garbage, not the toilet.



Wipes, garbage and debris caught on screens at a lift station - this is all material that should not be flushed.



Wipes plugging up a pump at a lift station

### Items that are safe to flush

Pee, poo, and toilet paper are the only things that are safe to flush. Our toilets and sewer systems weren't designed to handle anything else.

### Items that aren't safe to flush

These are commonly flushed items that damage our equipment and clog our sewers. Here's the right way to dispose of them:

#### Dispose of in the garbage:



wipes



hair



floss



paper towel



condoms



tampons



Return medications to the pharmacy



## Fats, Oils and Grease

Pouring fats, oils and grease down the sink can cause serious plumbing problems. To dispose of these foods properly, make sure to scrape or wipe food residue into the garbage instead of rinsing it down the drain.

As these substances move through pipes and sewer systems, they harden and collect other debris, eventually causing blockages. This can result in clogged household pipes and sewer backups that can overflow into homes, businesses and the environment.

### What can't go down the drain

Most of us know bacon grease doesn't go down the drain, but did you know that there are lots of other foods that can clog pipes?



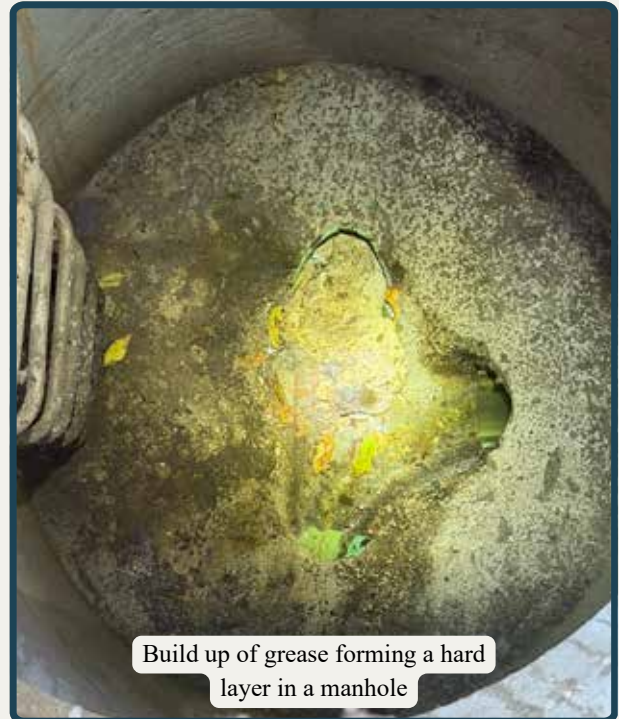
Fats - dairy products (like yogurt), margarine, shortening, gravy.



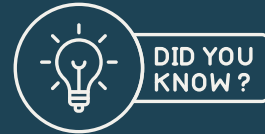
Oils - cooking oils (olive, coconut, canola, vegetable, peanut, etc), salad dressing, mayonnaise.



Grease - animal fat left over from cooking meats (bacon grease, pan drippings, etc).



Build up of grease forming a hard layer in a manhole



Fat, oil, and grease from cooking waste congeal with non-biodegradable items flushed down the drain, such as wipes and sanitary products, to create dense, sticky masses called fatbergs that block pipes and damage infrastructure.

- **Never pour grease down the drain**
- **Only flush the "Three p's"**
- **Dispose of all other waste properly**



**Running hot water and soap down the drain will help prevent clogs.**

**FALSE** - Fats, oils, and grease harden in pipes not just from cold. They undergo a chemical reaction that turns them into a concrete-like substance. Over time, this buildup blocks pipes. Even when mixed with soap, greasy residues still contribute to the reaction.

Content adapted from Metro Vancouver.  
For more information, visit [metrovanancouver.org](http://metrovanancouver.org).



# MCKAY AVENUE PARK PROJECT

## A formal grand opening of the park is being planned for spring of 2026

By Lisa Kopochinski

Construction began in mid-October on the renewed McKay Avenue Park project when the City of Portage la Prairie parks and cemetery team began to remove the old playground structure and excavated the new playground site.

Located just 100 feet away from the old playground equipment, the new site was chosen due to the flatter ground that should allow for better drainage.

The scope of this project included the replacement of the old playground structure and the installation of new

swings, benches, a feature play structure, a zoomerang, new playground border, and a fiber engineered wood chip base.

“This project began by attending an elementary school playground consultation that was hosted by grade school children at Yellowquill School,” recalls Paul Ziesmann, Superintendent of Public Works.

“A zipline or “zoomerang” was the number one play feature that was suggested by the children to be included in the project. So, we made sure to include it in the RFP.”





Once the excavation was complete, the playground contractor, Blue Imp, began installing the structure and completed the base and border work to the playground, with assistance from Lens Landscaping.

“This work began on November 10 and was completed on Saturday November 15,” says Ziesmann.

“Post completion, an issue with the zoomerang not functioning properly was noticed. A replacement part was needed. This was ordered by the contractor and replaced on November 27.”

Ziesmann says the total cost of this playground structure project was \$150,000, which was driven by a three-year

Council incentive to revitalize and improve our city parks and playgrounds.

“The internal city parks and cemetery team will be completing finishing landscaping, and the install of the gaga ball pit in spring of 2026.”

## **“The internal city parks and cemetery team will be completing finishing landscaping, and the install of the gaga ball pit in spring of 2026.”**

~ Paul Ziesmann,  
Superintendent of Public Works

The playground is now operational and in use by the public. However, due to the late season install, a formal grand opening of the park is being planned for spring of 2026.

“It is also important to note that some more minor features are being planned to install at the park in early 2026, which includes a Gaga Ball Pit and fresh landscaping.”



**Located just 100 feet away from the old playground equipment, the new site was chosen due to the flatter ground that should allow for better drainage.**



# KEEPING YOU INFORMED:

## Updates to the City's Traffic By-Law

The City of Portage la Prairie has recently updated its Traffic By-Law to make parking more convenient, improve snow clearing, and support local businesses. These changes are designed to keep our streets safe and accessible while giving residents more flexibility.

Here's what you need to know:

### BLOCK FACE PARKING RULES ELIMINATED

You no longer need to leave the entire block when your two-hour parking limit expires. Vehicles parked in time-limited street parking zones must still move when the free two-

hour limit ends, but you can now relocate to a different spot on the same block to reset your time.

### STREET PARKING RESTRICTIONS FOR SNOW CLEARING

From November 1 to April 30, vehicles cannot be parked on any part of the street on the business day before your residential garbage collection day. This replaces the previous rule that restricted parking the day after garbage pickup.

This change gives snow-clearing crews the space they need to clear streets before waste bins line the curb. What does this mean for



residents? Only move your vehicle when snow-clearing is required - not automatically every week. Once a grader has passed and snow removal



is complete, you can resume regular parking and place your bins out as usual. Snowfall amounts will determine how frequently the rules come into play. If there is no accumulation, streets will not be cleared, and normal parking routines can continue.

This adjustment keeps streets clear and services running efficiently during the winter months.

## NEW TIME-LIMITED PARKING ZONES

Time-limited street parking is currently in effect along Saskatchewan Avenue (4th St NW to 5th St E) and designated side streets. Additional zones will be introduced soon, offering free two-hour parking to improve traffic flow and access to businesses. The Saskatchewan Ave W extension does not include the entire west end, but focuses on business sections where turnover is needed. Two-hour

limits will also be implemented around Portage Collegiate Institute, following reports about all-day parking from students and visitors. Once weather permits, crews will install signage to mark the additional spaces. Watch for new signage in these areas:

- Saskatchewan Ave W (between 6th & 7th St W, and 11th to 20th St W)
- 3rd St SW (east side, between Saskatchewan Ave & Dufferin Ave)
- Dufferin Ave (south side, between 2nd & 4th St SW)
- 16th St SW (west side, between Saskatchewan Ave W & rear lane)

## CHANGES TO PUBLIC PARKING LOT ENFORCEMENT

The City's three public lots - Heritage Square West, Heritage Square East, and Howie/Duke - are now treated separately for enforcement. Here's what that means for you:

You get 3 hours free parking in any lot.

After 3 hours, you can move to a different lot, but you cannot return to the same lot for at least 2 hours unless you have a parking pass.

Time-limited parking is enforced Monday–Friday, 9:00 am–6:00 pm (holidays excluded). Evening and weekend parking remains free.

For a full complete list of updates, visit <https://www.city-plap.com/news/posts/traffic-by-law-updates-approved-by-council/>.

## WHY THESE CHANGES MATTER

These updates are part of our ongoing effort to make parking fair, efficient, and responsive to seasonal needs. By following the new rules, you'll help keep our streets clear, support local businesses, and make downtown parking easier for everyone.



**CHANGES TO PUBLIC PARKING LOT ENFORCEMENT**



# CITY HALL ACCESSIBILITY PROJECT NOW COMPLETE

By Lisa Kopochinski

Phase 2 of the impressive renovation of the historic City Hall building is now complete.

“The lift is now installed and is able to provide accessible access to the second-floor meeting rooms and Council Chambers as well as the second-floor washroom that was completed earlier this year,” said Director of Operations Jocelyn Lequier-Jobin.

“The lift has been appreciated especially by members of the public attending council meetings.”

The final project cost of the Phase 2 accessibility work was \$566,688. Local builder Ellwood McRorie was the general contractor.

## THREE ENTRANCES

City Hall has three entrances, all of which have at least eight steps to the main level. The City of Portage la Prairie received a grant of \$100,000 towards this project from the Enabling Accessibility Fund, which went towards Phase 2 of this project.

“A side entrance with a ramp on the west side of the building has been reworked, in addition to push door operators being installed.”

The flooring has been completed throughout the building, and new lighting and ceiling tiles have been installed. Additionally, fresh painting has also been completed.

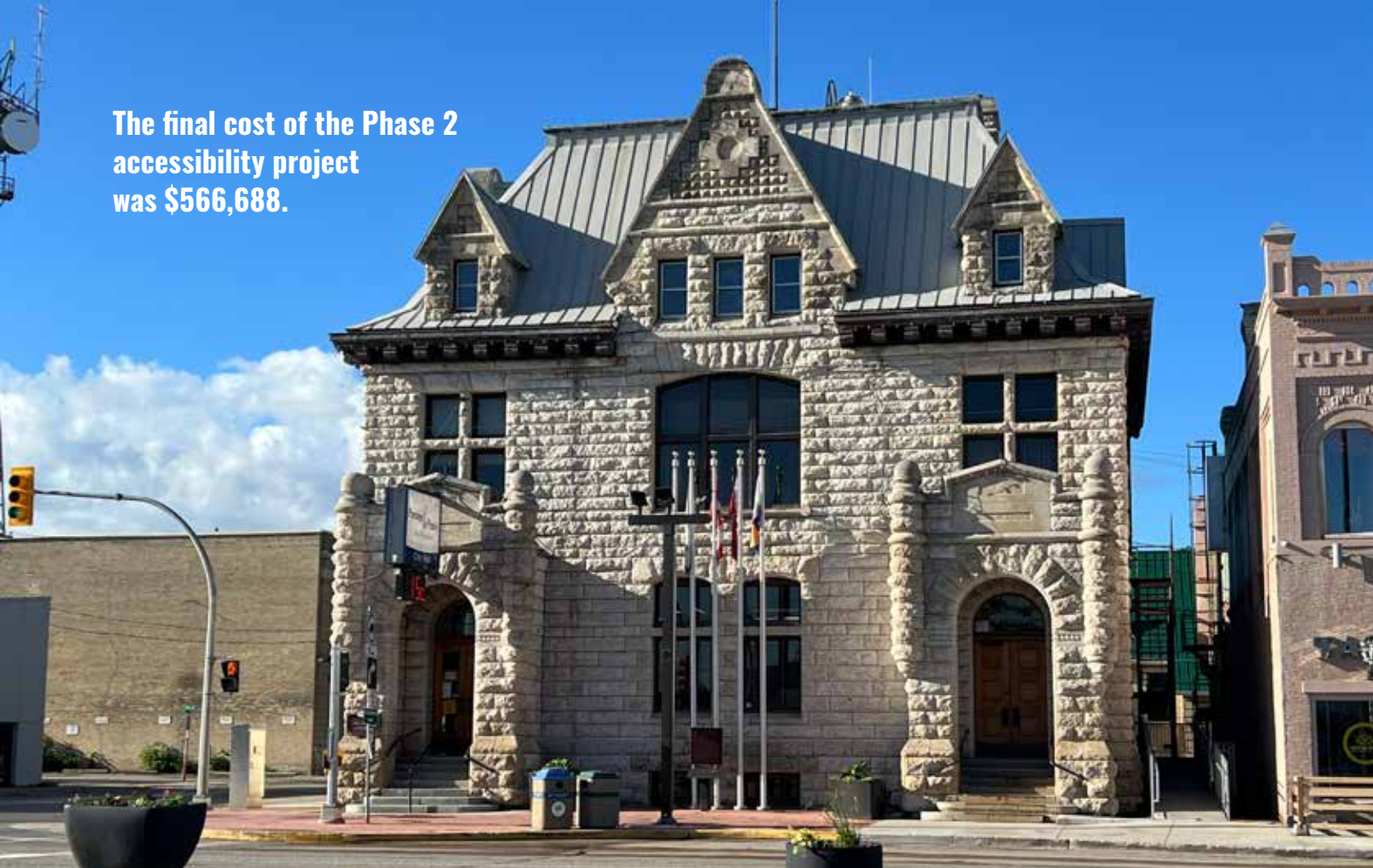
For more information about the many services offered, visit [www.city-plap.com](http://www.city-plap.com).



Main floor lift entrance



The final cost of the Phase 2 accessibility project was \$566,688.



## CITY OF PORTAGE LA PRAIRIE CONTACTS

### CITY HALL MAILING ADDRESS

97 Saskatchewan Ave. E.,  
Portage la Prairie, MB R1N 0L8  
[info@city-plap.com](mailto:info@city-plap.com)

### MAYOR

[sknox@city-plap.com](mailto:sknox@city-plap.com) | (204) 239-8333

### CITY MANAGER

[nchychota@city-plap.com](mailto:nchychota@city-plap.com) | (204) 239-8336

### MANAGER OF ADMINISTRATION

[dvanaert@city-plap.com](mailto:dvanaert@city-plap.com) | (204) 239-8337

### DIRECTOR OF CORPORATE SERVICES

[jsandney@city-plap.com](mailto:jsandney@city-plap.com) | (204) 239-8305

### MANAGER OF FINANCE

[nmcculloch@city-plap.com](mailto:nmcculloch@city-plap.com) | (204) 239-8355

### HUMAN RESOURCES

[hr@city-plap.com](mailto:hr@city-plap.com) | (204) 239-8338

### PARKING TICKETS

[officeclerk@city-plap.com](mailto:officeclerk@city-plap.com) | (204) 239-8310

### ANIMAL CONTROL / BY-LAW ENFORCEMENT

[bylaw@city-plap.com](mailto:bylaw@city-plap.com) | (204) 239-8326

### ACCOUNTS PAYABLE

[accountspayable@city-plap.com](mailto:accountspayable@city-plap.com) | (204) 239-8357

### ACCOUNTS RECEIVABLE

[ar@city-plap.com](mailto:ar@city-plap.com) | (204) 239-8311

### TAXES

[taxclerk@city-plap.com](mailto:taxclerk@city-plap.com) | (204) 239-8308

### UTILITIES

[utilityclerk@city-plap.com](mailto:utilityclerk@city-plap.com) | (204) 239-8370

### LICENSES

(ALARM, BUSINESS, LIVERY, MOBILE HOME, PET)  
[officeclerk@city-plap.com](mailto:officeclerk@city-plap.com) | (204) 239-8310

### FIRE HALL (GENERAL)

[firehall@city-plap.com](mailto:firehall@city-plap.com) | (204) 239-8340

### OPERATIONS (GENERAL)

[operations@city-plap.com](mailto:operations@city-plap.com) | (204) 239-8346

The City of Portage la Prairie offers a variety of e-services and online payment options to ensure uninterrupted access to services.

For more information visit our website at  
[www.city-plap.com](http://www.city-plap.com).



# PRRA Portage Regional Recreation Authority



FB: @StridePlace

IG: @stride\_place

StridePlace.ca



204-857-7772 info@prra.ca

245 Royal Road South Portage la Prairie, MB on the Island

## 2026 REGISTRATION DATES

SPRING LESSONS	MARCH 18th 2026
PRRA DAY CAMPS	APRIL 15th 2026
DELTA CAMPGROUND	MAY 1st 2026
SUMMER LESSONS	JUNE 10th 2026

## SHINDLEMAN POOL PARTIES

- \* Admission for up to 16 people \$150
- \* Use of the Shindlemans Pool during Public Swim
- \* Use of the Century 21 Pool Party Room for 2 hours

## SHINDLEMAN POOL RENTALS

- \* Hourly private pool rental \* up to 65 people
- \$145/hr for local users \$208/hr for visiting users

GREAT FOR BIRTHDAY PARTIES OR SPECIAL OCCASIONS

*Join our Vision!*  
**Dynamic Multi Media  
Score Clock Project**

- ★ Exciting new benefits for everyone using or advertising in the arena!

- ★ Anyone can get involved Check out StridePlace.ca for all the information.



When a community comes together, visions come to life!

**SPLASH ISLAND WATERPARK:** Opening Day Saturday June 6, 2026

**CANADA DAY CELEBRATIONS:** Wednesday July 1, 2026 - Live Entertainment and Fireworks at dusk

*Start the Year Off Right!*

## PRRA MEMBERSHIPS FOR ALL AGES!

PRRA offers three different types of memberships

*Love the Water?*

**AQUATIC**  
Access to the Shindlemans Aquatic Centre & Splash Island Waterpark

*Enjoy Walking?*

**WALKING TRACK**  
Access to the Homestead CO-OP Walking Track

*Want it All?*

**ACTIVE**  
Access to both pools, Viteria Fitness Centre & Homestead CO-OP Walking Track

Contact the PRRA to find the right membership for you

FACILITY - PROGRAM	BASIC INFORMATION
REGULAR ICE RENTALS	* Youth \$138/hour * Adult \$181/hour * September - May
PRRA DAY CAMPS	* 5 - 12 year olds * Weekly themes * All summer long (9 weeks)
PUBLIC SKATING	* Public, Family, Senior and Tiny Tot varied Sticks n' Pucks * October - May
ROTARY REPUBLIC PARK	* Seasonal athletic park * May - Oct * Soccer, Baseball, Football / Rugby.
COMMUNITY GARDENS	* Individual gardening plots at Republic Park * May - October
DELTA CAMPGROUND	* Seasonal campground * May - Oct * Seasonal and daily camping
SPLASH ISLAND	* Seasonal outdoor waterpark on Island Park * June - September

\* Schedules can change without notice, always check online

# Portage la Prairie Regional Landfill

Portage Regional Landfill

26095 PR#227

Telephone: 204-871-4549

Landfill Contact: Jamie Lilley

Email: [jlilley@city-plap.com](mailto:jlilley@city-plap.com)

Residents may deliver waste to the Portage la Prairie Regional Landfill site located 12 km north of the City on PR 240 and 15 km east on PR 227.

Effective January 1, 2025, the Landfill began a \$250 penalty for all untarped loads. Tipping Fees of \$65 per metric tonne apply to all City residents.

The Landfill has a minimum charge of \$10 which applies to loads of 200 kgs or less. A \$10 per metric tonne provincial Waste Reduction and Recycling Support Levy has been applied to waste deposited in the landfill.

The Landfill will no longer charge for freon-containing appliances.

## BEFORE YOU LEAVE HOME...

- Review your City of Portage la Prairie Waste Reduction Guide to see which products can be kept out of the Landfill. Hazardous waste (e.g., oil, flammable products, and any type of chemical) is not accepted at this site. However, Portage & District Recycling operates a Household Hazardous Waste Depot and will accept these items. Please do not place hazardous materials out for curbside collection.
- Sort loads by material type.
- The Landfill recycles metals, freon-containing appliances, tires, mattresses, and box springs.
- Remove all fluids from gas-powered equipment.
- Remove all batteries from waste. Batteries should be disposed of at Portage and District Recycling or an authorized retailer.

## DID YOU KNOW?

- Haulers from outside the region often comment that the Portage la Prairie Regional Landfill is one of, if not the best kept, landfills in Manitoba.
- When damaged, Lithium-Ion Batteries can instantly catch fire and explode, injuring workers and destroying equipment and facilities.



Leachate Holding Pond and Clay Burrow Pit

- Customers must make their own arrangements to unload heavy materials.
- Secure open loads with a tarp and straps or rope. The Landfill will be enforcing a \$250 penalty for all untarped loads.
- The Landfill accepts cash, Debit, Visa, and Mastercard.

## HOURS OF OPERATION

- April 1 to October 31: Monday to Saturday, 8:30 am to 6:00 pm. The last loads of waste will be accepted at 5:30 p.m. After that time, the landfill gates will be closed to allow customers already inside to finish disposing of their waste and exit. Staff will be available to open the gates for exiting vehicles.
- November 1 to March 31: Monday to Saturday, 8:30 am to 4:30 pm
- Closed Sundays and all Statutory Holidays

## ADDITIONAL INFORMATION

There is no scavenging, trespassing, or hunting allowed on the Landfill site.

Your cooperation in helping to keep the customers and staff of the Landfill safe is appreciated.

The Portage la Prairie Regional Landfill Authority operates the development as a Class 1 Waste Disposal Ground pursuant to regulations under the Environment Act, Manitoba Regulation 37/2016 and Environment Act Licence No. 3278.

## MEMBERS OF THE BOARD

Terrie Porter (Chair), Doug McAuley (Vice-Chair), Ryan Espey, Colin Doyle, Arnold Verwey, and Garth Asham.





## FORT LA REINE MUSEUM HAS SOMETHING FOR EVERYONE!

From special events to hands-on education, there's always something happening at the museum.

Discover the stories, the people, and the heritage that shaped our region — all in one unforgettable visit.

Open to the public from May to September, we invite you to explore over 20 historic buildings and step back into the world of early pioneers.



## OPEN SEASONALLY MAY - SEPTEMBER

Book your birthday party at the museum, grab some friends for a charming tea party, or join us for one of our special events.

Explore the grounds on a scavenger hunt, host your wedding in a beautiful historic setting, or plan a photo shoot with our picturesque backdrops.

So much to experience — all in one unforgettable place!



## Preserving Prairie Culture

[www.fortlareinemuseum.com](http://www.fortlareinemuseum.com)  
2652 Saskatchewan Ave East  
Portage la Prairie, MB  
204-857-3259

In November 2023, we proudly unveiled our Strategic Direction to the public, emphasizing our commitment to five key initiatives: Quality of Life, Community Safety and Well-being, Economic Opportunity, Inclusive and Informed Community, and Showcasing our Community.

Since then, we have been diligently working on the tasks outlined within each of these strategic initiatives. This infographic provides an update on our achievements to date, showcasing the progress we have made and the positive impact on our community.



## QUALITY OF LIFE

We will continue to connect and build upon the strategic investments of the past that have created a community of excellent cultural and recreational activities while ensuring we provide opportunities to grow and enhance housing in the community.

### **What we have achieved so far:**

- Continuing to work on the development of the former Agassiz Youth Centre land. Plans are on track for road construction to be complete by fall of 2026.
- The third annual Developer Day was held, showcasing Portage la Prairie's potential to commercial and residential developers and encouraging investment.
- Koko Platz Recreation Club re-construction is complete, including the new rink and landscaping.
- The Garrioch Creek trail project is on track to be completed this winter.
- As part of the City's 3-year plan for development in City parks and green spaces, Simplot Central Park pathways were installed and will be paved in the spring, and the washroom should be complete this winter. 79 trees and shrubs were installed as well, supplied through CN Eco-Connection/From the Ground Up funding.
- McKay Park structure upgrades were completed, and a Gaga ball pit will be added in the spring.
- Council approved the purchase of two weed harvesters in 2026, as part of the Crescent Lake Water Management and Aquatic Invasive Species Plan.



## COMMUNITY SAFETY AND WELL-BEING

We recognize that it takes an entire community working together to improve the safety and well-being of all residents. This Council is committed to working in collaboration with our partners to continue to improve and support the well-being of our citizens. Community safety is ultimately about helping communities to be and feel safe.

### **What we have achieved so far:**

- The Community Safety department has been functioning with the extended hours of 7:00 am to 10:30 pm with additional officers hired in the summer, and a second vehicle purchased.
- The Community Safety and Well-Being Plan data has been analyzed, and the plan will be released to the public this winter.





## SHOWCASING OUR COMMUNITY

We believe that community beautification and tourism-focused investments contribute to civic pride for a more livable community. Our goal is to share our story about the quality of life we enjoy here in Portage la Prairie.

### ***What we have achieved so far:***

- The exterior lighting project for City Hall is complete.
- Assisted the Holiday Avenue Project seasonal displays on Saskatchewan Avenue as well as new tree lighting in the Library and Glesby Centre area.
- The Accommodation Tax By-Law was passed. Once Provincial approval is received, this will facilitate more capacity for funding tourism initiatives.



## ECONOMIC OPPORTUNITY

We will build upon our accessible and diverse transportation infrastructure, ample quality water and soil, existing innovative industries and labour pool, and exceptional quality of life amenities to grow our region's economy and population in a sound and sustainable, but robust manner.

### ***What we have achieved so far:***

- Making steady progress on the detailed design for the Water Treatment Plant expansion, which is on track for construction to start in 2026.
- Continuing to incentivize and encourage investment in our downtown corridor and former Portage Mall property.



## INCLUSIVE AND INFORMED COMMUNITY

We cherish how diversity brings appreciation, understanding and energy to our region, but we also value how the friendships, bonds, and partnerships we build as we learn from each other help us find new solutions and identify new opportunities that we could not find or achieve alone. We forge renewed strength as we walk this path together.

### ***What we have achieved so far:***

- Continued CEDI (First Nation-Municipal Community Economic Development Initiative) meetings with Long Plain First Nation and Dakota Plain Wahpeton Nation to develop a regional economic action plan, resulting in a joint pow wow being held at Stride Place in December of 2025.



# THE PORTAGE ADVANTAGE



Portage Regional Economic Development

We're a not-for-profit agency **driving economic growth** for the City and RM of Portage la Prairie. Since 2013, we've built a strong foundation that attracts new investment, strengthens existing businesses, and **champions regional collaboration**. Our goal is to maintain and enhance an environment where success is not only possible- but expected.

**It's all part of the Portage Advantage-**  
a proven edge for businesses  
ready to grow.



CONNECT WITH PRED - **UNLOCK YOUR ADVANTAGE TODAY!**



[www.investinportage.ca](http://www.investinportage.ca)



[eoleary@investinportage.ca](mailto:eoleary@investinportage.ca)



## PORTAGE LA PRAIRIE

**There's nowhere quite like the Region of Portage la Prairie.**

From lakeside views to one-of-a-kind shops, vibrant arts, and unforgettable events, we're proud to be a place that's as unique as the people who live here.

Thank you for being part of what makes this Region so special. Keep exploring, keep celebrating, and keep sharing the best of what we do have — right here at home.

*Discover your Island on the Prairies.*



[www.discoverportagelaprairie.ca](http://www.discoverportagelaprairie.ca)







# Portage la Prairie Regional Library

40 B Royal Road N., Portage la Prairie R1N 1V1  
Ph: 204-857-4271



## Welcome!

Community members of all ages attend activities, enjoy unique events, access the internet, work on our public computers, and borrow books!

All of our programs and events are open to the public and free of charge!

Have you visited your library lately?

### WINTER / SPRING 2026

Family Literacy Week: **January 25 to February 1**  
 Story Time with Mayor Knox: **January 28**  
 Valentines for Seniors: **February 2 to 13**  
 Easter Egg Hunt: **April 4**  
 Mother's Day Card Kits: **May 28 to April 8**  
 Father's Day Card Kits: **June 8 to 19**  
 48th Summer Book Sale: **July to August**  
 TD Summer Reading Club: **June to August**

## LIBRARY HOURS

Tuesday 10 am to 5 pm  
 Wednesday 10 am to 8 pm  
 Thursday 10 am to 8 pm  
 Friday 10 am to 7 pm  
 Saturday 10 am to 4 pm

Closed Sundays, Mondays and  
 Statutory Holidays

**NEW  
 PROGRAMS:  
 S.T.E.A.M.  
 & Tabletop  
 Games!**

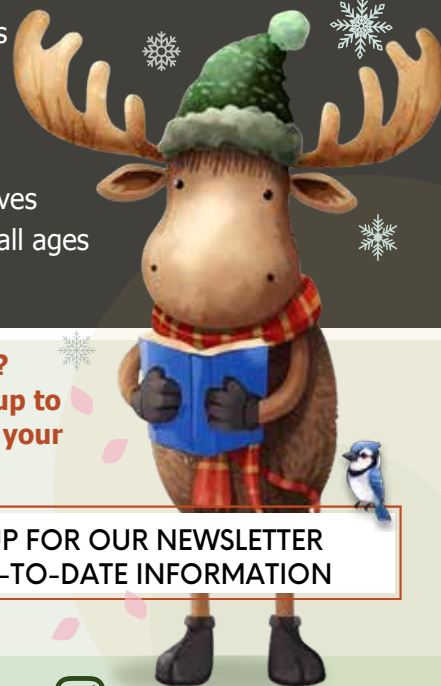


## Services

- Books, magazines, audiobooks, DVDs, blood pressure monitors, radon screeners, air quality monitors & board games
- Databases: Libby, EBSCOhost, CBC Corner & Ancestry.ca
- Resources for Patrons with Print Disabilities: Victor Readers, Envoy Connect, CELA & NNELS
- Free Wi-Fi access & public computers
- Photocopying & Printing (starting at 25¢)
- Local history archives
- Free Activities for all ages
- Exam proctoring

**Did you know?**  
 You can take up to  
 50 items with your  
 library card?

**SIGN UP FOR OUR NEWSLETTER  
 FOR UP-TO-DATE INFORMATION**



[www.portagelibrary.com](http://www.portagelibrary.com)



[portagelaprairielibrary](https://www.facebook.com/portagelaprairielibrary)



[@portagelaprairielibrary](https://www.instagram.com/portagelaprairielibrary)



# Koko Platz Recreation Club Now Completed

By Lisa Kopochinski

Now complete, the reconstruction of the Koko Platz Recreation Club—including the new rink and landscaping—is open and welcoming visitors and residents to enjoy its impressive new facilities.

After a major reconstruction project totaling just over \$2 million dollars, the club now features a modernized hall, a brand-new outdoor rink and landscaped grounds. The building renovation came in at \$920,000, while the rink accounted for \$1,085,000. General contractor on this impressive project is Ellwood McRorie, delivering a space that balances modern functionality and neighborhood charm.

“One of the major challenges,” says Jocelyn Lequier-Jobin, Director of Operations for the City of Portage la Prairie, “was getting proper slopes for drainage on a flat low site. There were so many different trades, so coordinating schedules was a challenge.”

“The rink has been handed back to the volunteer board to run it,” says Lequier-Jobin. “We want to remind everyone that the Rec Club is open to all residents of Portage to

enjoy the rink and other amenities.”

Membership options include \$75 for families and \$25 for individuals, offering unlimited skating and 20 percent off hall rentals. Drop-in skating is available for \$5 per person. Regular hours are weeknights 5:00 p.m. to 9:00 p.m. and weekends 10:00 a.m. to 2:00 p.m., and 5:00 p.m. to 9:00 p.m (subject to change). A small canteen will be available during operating hours.

When the ice is out, the outdoor space transforms into a hub for basketball, pickleball, ball hockey, and more. Equipment is provided on a first-come, first-served basis, so please be respectful of others and the facilities.

The club is always looking for volunteers! If you’d like to help, email [kokoplatzrecclub@gmail.com](mailto:kokoplatzrecclub@gmail.com). For hall rentals or more information, visit <https://www.kokoplatzrecclub.com/rental-information>.

Come out, connect with your neighbors, and enjoy everything the revitalized Koko Platz Recreation Club has to offer!



# EVENTS *Around town*



Mayor Knox with Councillors Preston Meier, Ryan Espey, Colin Doyle, and Terrie Porter at the Southern Chiefs Organization Binasi Economic Forum.



Councillor Joe Masi was honoured to deliver greetings at the 4th Annual Diwali Celebration in Portage la Prairie.



City Council kept the December meeting festive in their annual Ugly Christmas Sweaters. Business as usual, just a little brighter!



The 3rd Annual Developers Day showcased opportunities in Portage la Prairie, drawing developers from across Manitoba. Hosted by the City of Portage la Prairie with partners PRED, the RM of Portage la Prairie, and Southport Aerospace Centre.



Mayor Knox, Councillors Faron Nicholls, Terrie Porter, Joe Masi, and Colin Doyle, together with City Manager Nicole Chychota, attending the Association of Manitoba Municipalities Fall Convention.



Councillor Joe Masi and Councillor Terrie Porter were pleased to take part in the inaugural Southern Manitoba Best Buddies Friendship Walk in Portage la Prairie, an event dedicated to fostering friendship and inclusion for individuals with intellectual and developmental disabilities.