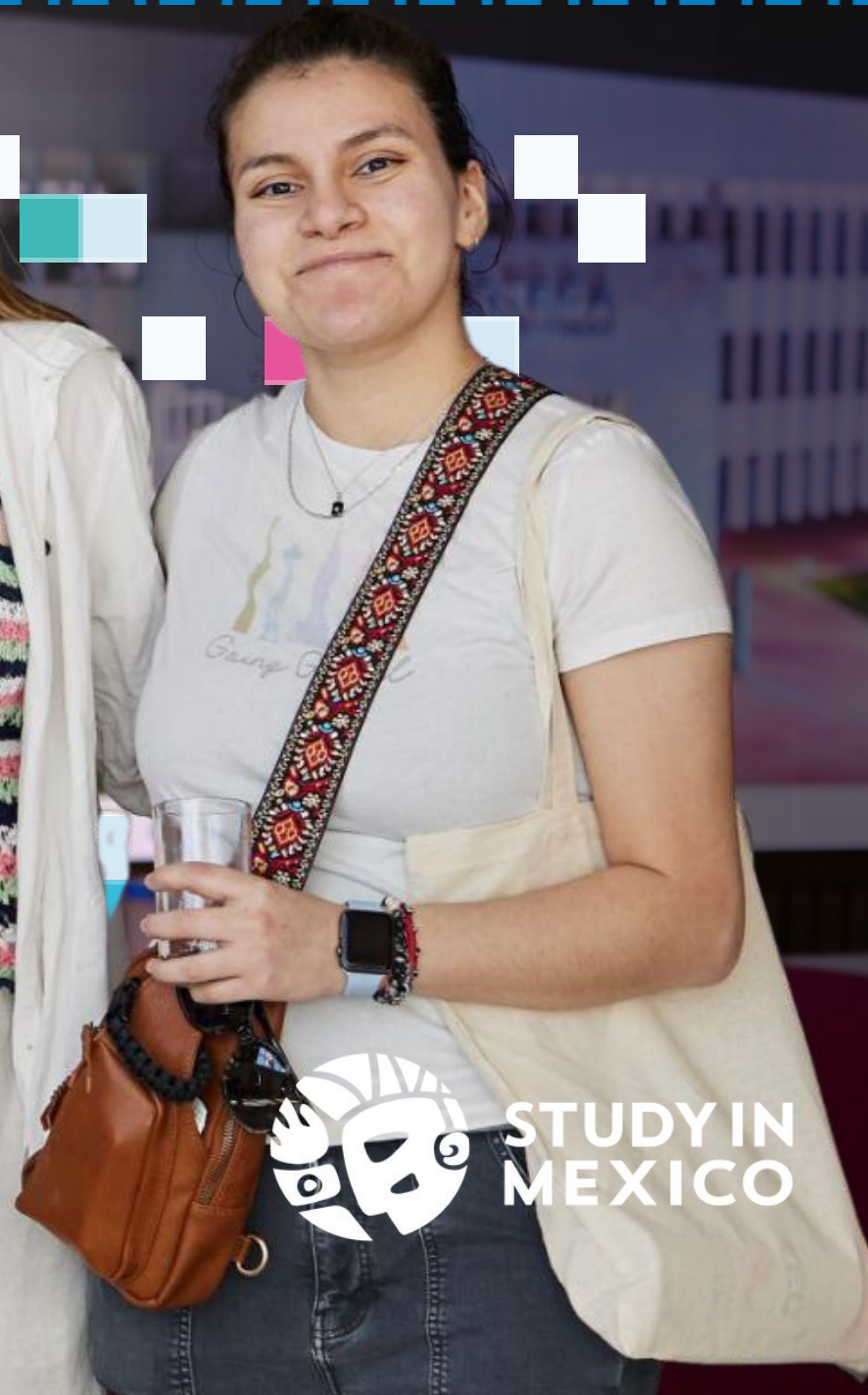


Tec de Monterrey

Find your campus
across Mexico



STUDY IN
MEXICO

Mexico is a
country of vibrant
culture and
beautiful diversity.

From ancient
traditions to
modern cities, it
offers unique
experiences in
history, cuisine,
and landscapes.

It is the perfect
place to learn,
travel, and
immerse yourself
in a new culture.



Discover the Magic of Mexico

Some of the wonders you can experience here



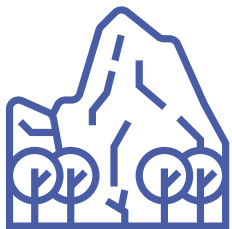
35 UNESCO World Heritage Sites

From ancient cities like Teotihuacán to charming colonial towns and natural reserves.



World-class cuisine

Tacos, tamales, and mole are just a glimpse of the flavors recognized as UNESCO Intangible Heritage.



Landscapes full of contrast

From turquoise beaches and lush jungles to vast deserts and snow capped volcanoes.



Warm and welcoming culture

Traditions such as Día de Muertos, mariachi, and folkloric dances make Mexico unique.



Lively culture and festivities



Archaeological sites



Magic Towns



Biodiversity



Rich cuisine

From North to South
Tec de Monterrey is
present in every
region of Mexico,
with 25 campuses
all around the
country.

Six of them are our
international
campuses where
you can study at.



OUR CAMPUSES

Where to find our international campuses



CAMPUS

Puebla

PUEBLA



CAMPUS

Santa Fe

MEXICO CITY



CAMPUS

Ciudad de México

MEXICO CITY



CAMPUS

Guadalajara

GUADALAJARA



CAMPUS

Monterrey

MONTERREY



CAMPUS

Querétaro

QUERETARO



PUEBLA



A city of history and flavor.

Puebla is known for its colonial architecture, colorful talavera pottery, and rich culinary tradition.

It is a UNESCO World Heritage Site and offers the perfect mix of culture, history, and modern student life.





Where to go

Puebla's Historic Center, Great Pyramid of Cholula & Church of Our Lady of Remedies, and Biblioteca Palafoxiana (one of the oldest libraries in the Americas)



What to eat

Mole poblano (Puebla's signature dish), chiles en nogada, cemitas poblanas, and sweet treats: camotes, and tortitas de Santa Clara



Tec Campuses

Located in the Angelópolis area, one of the city's most modern and dynamic districts, just 20 minutes from downtown.



The weather

Average: 17° C
Max 28° C Min 6° C



Accommodation

Residence Halls
Host Family Program
Independent Housing



Cholula de Rivadavia



Campus Puebla



Historic Center



Star of Puebla



Mole Poblano



MEXICO CITY

One of the most cosmopolitan cities in the world.

Mexico City offers a vibrant intercultural experience, with museums for every interest, a lively nightlife, diverse cuisine, and a perfect blend of tradition and modernity.

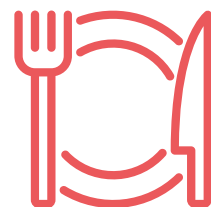


Angel de la Independencia



Where to go

Teotihuacan Archeological Site, Bellas Artes Museum, Chapultepec Forest & Castle, Xochimilco, and Anthropology Museum.



What to eat

All types of tacos: Tacos al pastor, tacos de suadero, papas del carrito, huaraches, sopes and tlacoyos.



Tec Campuses

- **Campus Ciudad de México:** Located in the south of the city, close to cultural landmarks and modern urban life.
- **Campus Santa Fe:** Located in the west of the city, in the modern district of Santa Fe.



The weather

Average: 17° C
Max 30° C Min 0° C



Accommodation

Host Family Program
Independent Housing



Bellas Artes Museum



Campus Ciudad de México



Campus Santa Fe



Chapultepec Castle



Xochimilco

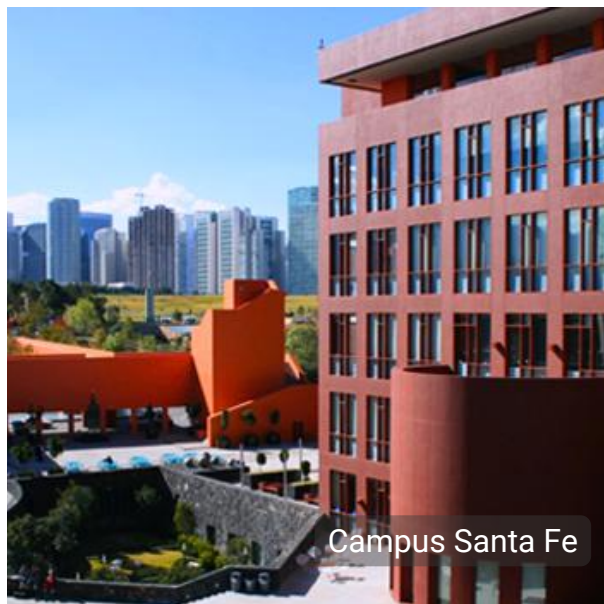


Tacos al pastor



About Santa Fe District

At Mexico City



Campus Santa Fe

Santa Fe is **Mexico City's modern business and residential district**, combining corporate towers, upscale shopping, and vibrant green spaces. Home to **Centro Santa Fe**, Latin America's largest mall, and the beautiful **Parque La Mexicana** a green oasis with lakes, trails, bike pats, and open air cafés.

With offices, luxury residential complexes, and cultural amenities all within reach, Santa Fe offers both convenience and lifestyle in an urban setting.

All you need in one district.



La Mexicana Park



Business hub



Green oasis



Plenty of shopping



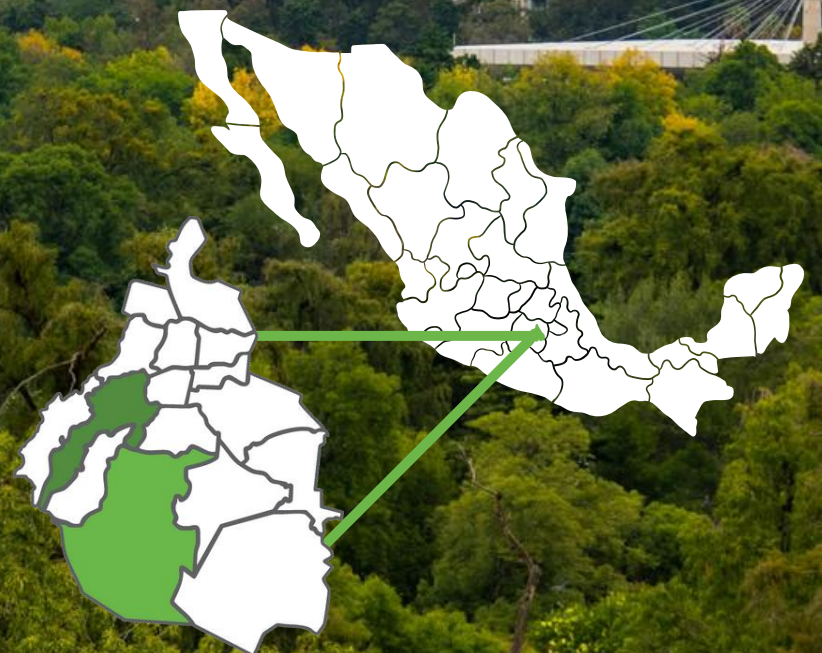
Vibrant student life



Santa Fe Business District

**Two campuses,
one unforgettable city.**

Whether in the south at
Campus Ciudad de México
or the west at
Campus Santa Fe,
Mexico City invites you to
learn, connect, and grow in
a worldclass academic
and cultural hub.



Chapultepec Park

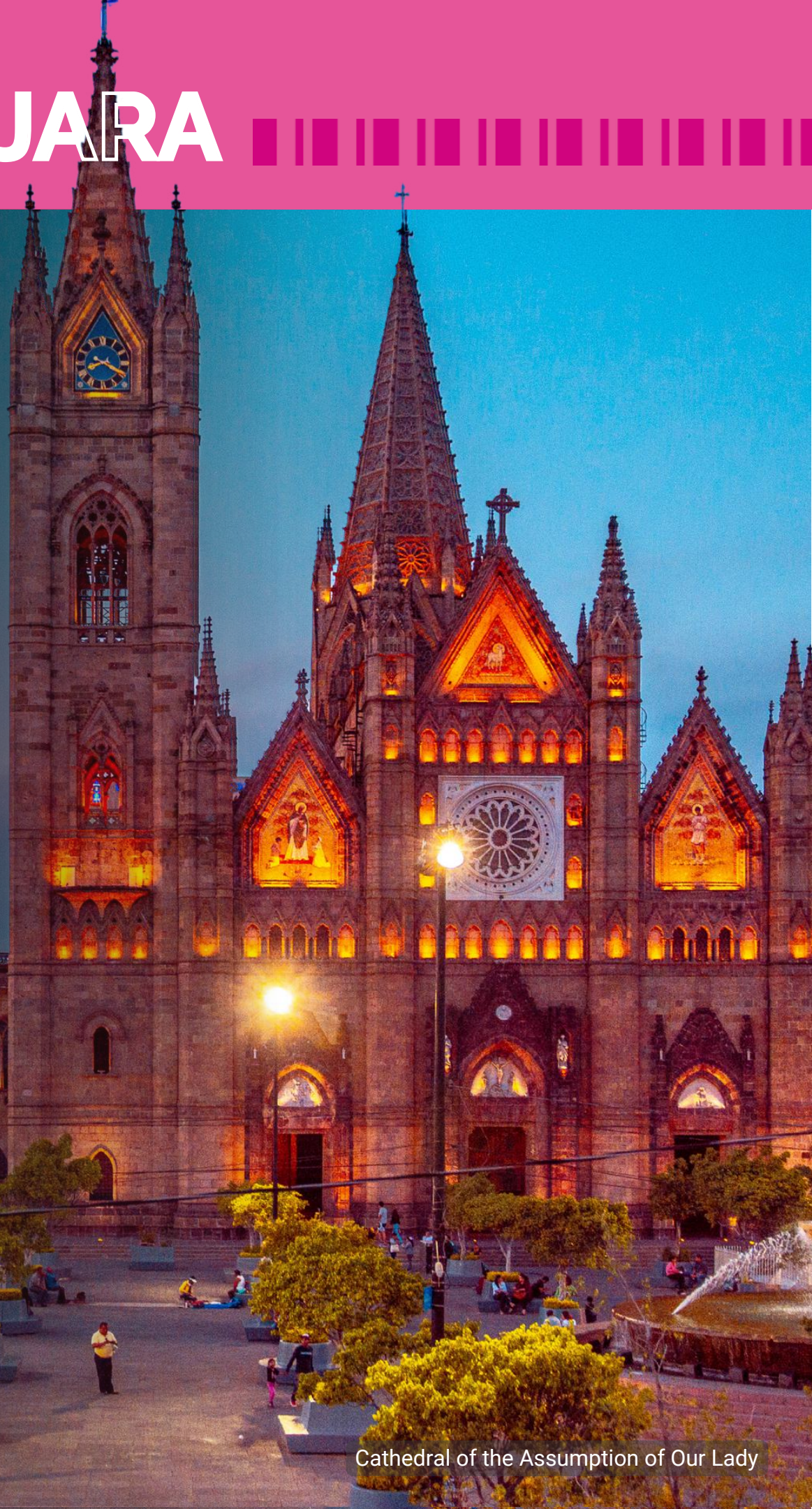


GUADALAJARA



Guadalajara is known as the birthplace of mariachi music and tequila, symbols of Mexico's rich cultural heritage.

At the same time, it is one of Mexico's fastest-growing technology hubs, often called the "Silicon Valley of Latin America," blending creativity, modern industry, and vibrant traditions.



Cathedral of the Assumption of Our Lady



Where to go

Historic Downtown, Cabañas Museum, Mercado libertad (also known as San Juan de Dios Downtown), Tlaquepaque, Tequila Town and Lake Chapala.



Tec Campus

Located in Zapopan, west of the metropolitan area, with easy access to both the historic center and modern districts.



What to eat

Torta ahogada, birria, pozole tapatío, carne en su jugo (Mexican Beef Stew), and jericallas (traditional custard dessert).



The weather

Average: 20° C
Max 32° C Min 10° C



Accommodation

Residence Halls
Host Family Program
Independent Housing



Tlaquepaque



Campus Guadalajara



Plaza de Armas



Tequila, Jalisco



Torta ahogada



MONTERREY

Monterrey is a vibrant city in northern Mexico where modern urban life meets stunning natural landscapes.

Surrounded by iconic mountains like the Cerro de la Silla and Chipinque, the city offers a unique blend of skyscrapers, business hubs, and outdoor adventures.





Where to go

Villa de Santiago, Cola de Caballo, Barrio Antiguo, City Center, 3 Museos, Marco Museum, Parque Fundidora, Chipinque, La Huasteca, San Pedro Garza García (richest city in Latin America) y La Milarca Museum.



Tec Campus

Located just 15 minutes from downtown, in a vibrant student district known as Distrito Tec, surrounded by cafés, and student life.



What to eat

Carne asada, every Sunday friends and families gather to socialize and eat it. "Dulce de leche" is a must. Don't forget to try the typical Chilaquiles at Tec.



The weather

Average: 24° C
Max 38° C Min 8° C



Accommodation

Residence Halls
Host Family Program
Independent Housing



San Pedro Garza García



Campus Monterrey



Chipinque



Barrio Antiguo



Carne Asada

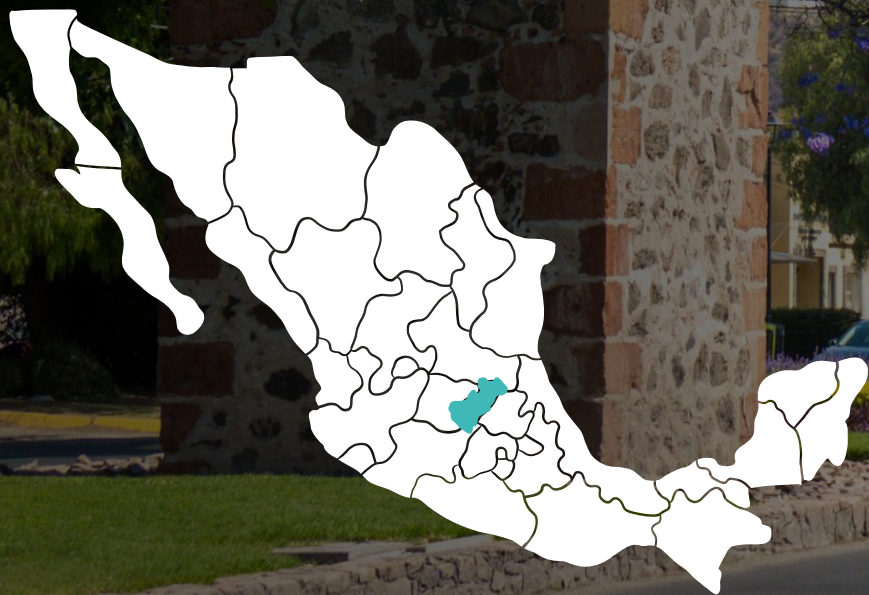


QUERETARO



A colonial gem with modern growth. Queretaro is known for its beautifully preserved historic center, filled with colonial architecture and vibrant plazas.

At the same time, it has become one of Mexico's fastest-growing cities, recognized for its innovation, aerospace industry, and high quality of life.





Where to go

Colonial Downtown, Peña de Bernal, Tequisquiapan, Sierra Gorda Biosphere Reserve, and the Art, Cheese and Wine Route.



What to eat

Enchiladas queretanas, gorditas de maíz quebrado, atole de teja, and local artisan cheeses and wines.



Tec Campus

Located just 10 minutes from downtown, in a safe and vibrant area surrounded by cafés and student life.



The weather

Average: 18° C
Max 30° C Min 6° C

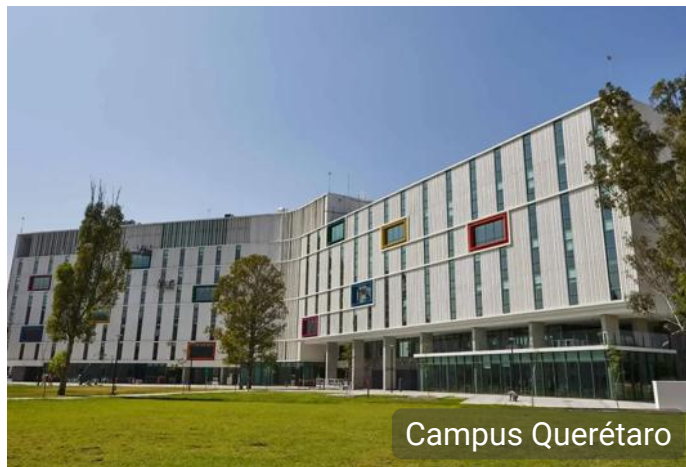


Accommodation

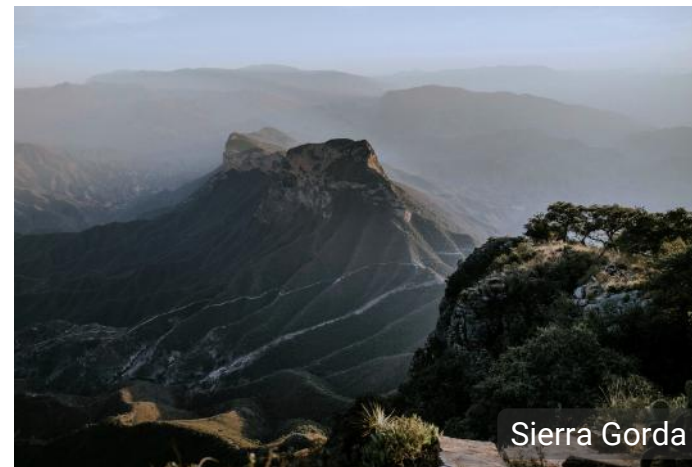
Residence Halls
Host Family Program
Independent Housing



Tequisquiapan



Campus Querétaro



Sierra Gorda



Bernal



Enchiladas queretanas

All our campuses are designed to foster the perfect environment to encourage intensive academic activity, research, and recreation.





Campus Services and Facilities

Available at all our international campuses



Advisory exclusive for international students



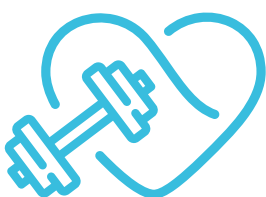
Housing advisory



Library and study areas



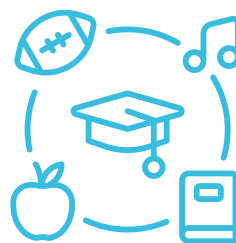
Emergency medical services



Gym and outdoor facilities



Cafeterias and fast-food outlets



All kinds of extracurricular activities



Internal security

Choosing a Campus



Key Tips

Selecting the right campus for your exchange can shape your entire experience.

Here are some key tips to help you make the best decision:



Review the course catalog

Make sure the courses and programs you need will be available at the campus you choose.

 [Preliminary Course Catalog](#)



Match the city to your lifestyle and interests

Whether you enjoy vibrant city life, cultural attractions, nature, each city has its own personality.



Check available housing options

Consider your housing preferences and which campuses offers options that best suit your needs.



Consider cost of living

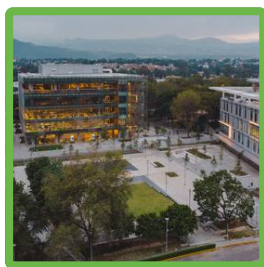
The cost of living may have a small variation from city to city. We recommend to check the difference with this [Cost of Living Calculator](#).



Still have questions? Let us help you!

Each international campus has a dedicated team ready to support you. Whether you're curious about housing, academic offerings, or city life, you can contact us.

Campus Ciudad de México



Mariela Muñoz

mariela.munoz@tec.mx

Campus Guadalajara



María Alonso

maria.alonsoji@tec.mx

Campus Monterrey



Carolyna Alcántara

carolyna@tec.mx

Campus Puebla



Charlene Poiré

charlene@tec.mx

Campus Querétaro



Daniela Espinosa

d.espinosag@tec.mx

Campus Santa Fe



Montse Niño

montserrat.nino@tec.mx

See you soon in Mexico!



Contact information



studyinmexico.tec.mx



studyinmexico@itesm.mx