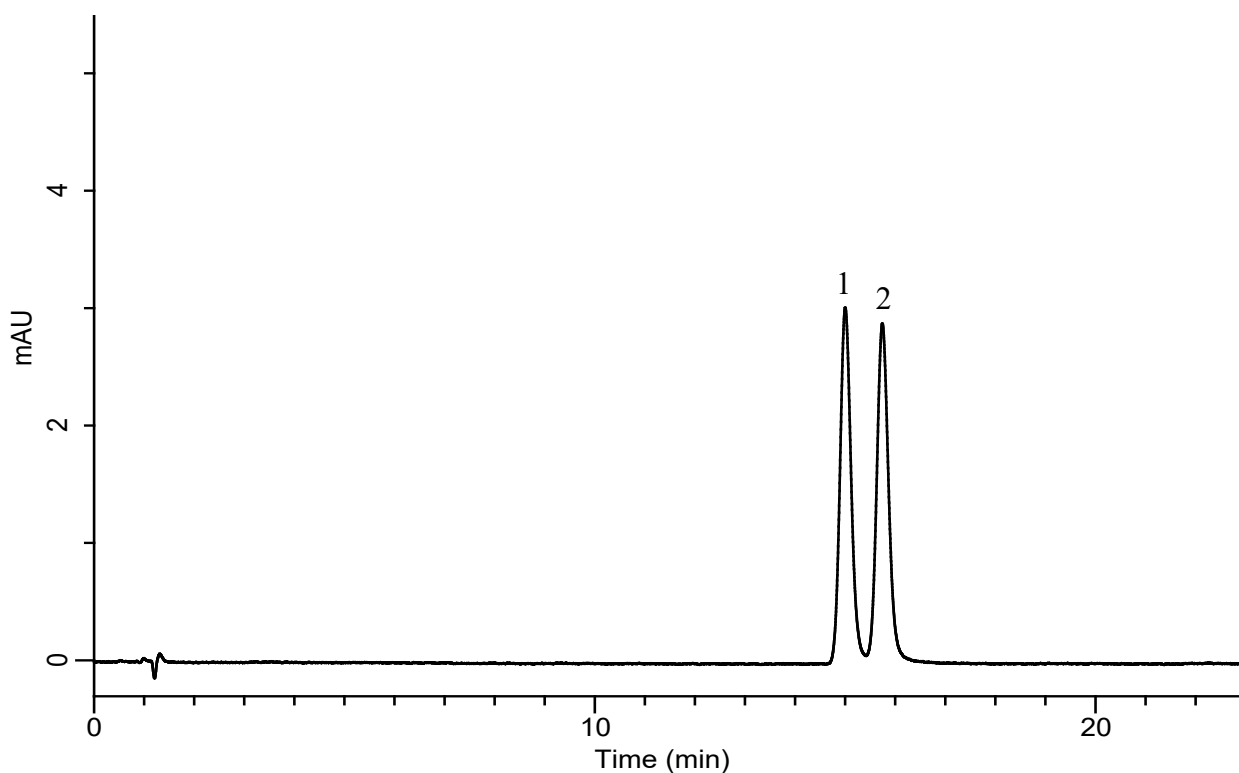


InertSearch™ for LC

Inertsil™ Applications

Analysis of Toluene and Toluene d8

Data No. LB694-0696



Conditions

System : Primaide HPLC system
Column : InertCore Plus C18 (2.6 μ m, 150 x 4.6 mm I.D.)
Column Cat. No. : 5020-17522
Eluent : A) CH₃CN
 : B) H₂O
 : A/B = 35/65, v/v
Flow rate : 1.0 mL/min
Col. Temp. : 40 °C
Detection : UV 254 nm
Injection Vol. : 5 μ L
Sample : Standard

Analyte:

1. Toluene-d8 100 mg/L
2. Toluene 100 mg/L